

the Bulletin Board

VOLUME 17, NUMBER 35

Published by the BNL Personnel Office

MAY 26, 1964

BERA FILM SERIES THE HOUSE I LIVE IN

Thurs., May 28 — Lecture Hall — 8:30 p.m.

"The House I Live In" is a drama which traces the lives of a number of families over a period of twenty years, beginning in the early 1930's, when they move into a new apartment house in one of Moscow's outlying districts. One family is dominated by a stern mother (Valentina Telegina); next door live a geologist and his lovely wife who, to her grief, betrays him; and there is a stalwart lad who is attracted to a pretty would-be actress. The war affects all of them deeply, and the house loses many of its inhabitants. The film closes with three moving sequences of homecomings from the front. Winner of a major award at the Brussels Film Festival, the motion picture's remarkably sensitive scenario was written by an eighteen-year-old, Peter Zharov.

"Some very real people, Russian people, enter and leave 'The House I Live In' as World War II thunders in the background. This is the sum and substance of a quiet, thoughtful, and moving drama that . . . pivots in the power of simple suggestion . . . It is certainly a major surprise, if not achievement . . . Mr. Zharov may not have participated in the war that brought his country to its knees, but he knows human beings. And with a fine cast, an alert photographer, and two astute directors, the agonies of wartime family life, not necessarily Russian, are conveyed with feeling and occasional power . . . Next to the characterizations, the most interesting aspect of the drama is the cryptic understanding behind the camera . . . Miss Telegina, as an aging distraught mother, is splendid. But the others are almost as effective, especially Yascha Zolnikov and Vladimir Zemlyankin as the two sons, and Eva Myshkova as the conscience-stricken wife."

—NEW YORK TIMES

SUMMER BOWLING

Eight teams have entered the Mixed Doubles Bowling League and are all set to begin their fourteen-week competition at 6:30 p.m. on Tuesday, June 2, at the Port Jeff Bowl.

A meeting of team captains is being held this week to elect a secretary and representative and to review the League regulations.

MEMORIAL DAY HOLIDAY

Friday, May 29, 1964, will be observed as the Laboratory's Memorial Day holiday. Payday for all employees will be Thursday, May 28. Weekly paychecks will be distributed at the Bank during the regularly scheduled payday hours: 9:45 a.m. — 12:00 noon and 12:30 p.m. — 4:00 p.m.

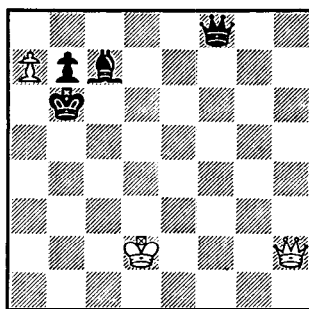
The on-site Bank will be open on Friday, May 29, between the hours of 10:00 a.m. to 3:00 p.m. only.

U.S. POST OFFICE

The United States Post Office on site will be open on Friday, May 29, from 8:15 a.m. until 2:00 p.m.

CHESS PROBLEM

In this week's problem, Black is a bishop up on his opponent, but White could force a draw. Can you? Answer elsewhere in the BULLETIN BOARD.



GYM CLOSED NEXT WEEK

The Gymnasium facilities will be used for the Biology Conference the week of June 1. All physical activities will be cancelled during this week.

INSTRUMENTATION DISPLAY

Beckman Instruments will display various items of their manufacture, including spectrophotometers, electrophoresis apparatus, and pH meters, in the East Room of the Cafeteria on Tuesday, June 2, between the hours of 1:00 and 5:00 p.m. Everyone is invited.

BROOKHAVEN PEACE SEMINAR JUNE 4, 1964

A Brookhaven Peace Seminar, co-sponsored by the Brookhaven Chapter of the Federation of American Scientists, will be held on Thursday, June 4, at 8:30 p.m. in the Old South Haven Church, Brookhaven. Dr. Naomi Shohnu will speak on the topic "Hiroshima Today: The After Effects of THE BOMB."

A nuclear physicist, Dr. Shohnu is currently a Professor of Physics at Hiroshima Women's College and a member of the Atomic Bomb Casualty Research Group. This Group is an association of medical doctors and scientists who have issued several reports on physical and medical effects of the bomb. Dr. Shohnu, who is touring the U.S. under the auspices of the World Peace Study Mission, will speak of his experiences at Hiroshima and discuss possible ways of banishing war.

TIAA — CREF

Participants in the Laboratory Retirement Plan may elect to have all premiums applied to TIAA, the fixed annuity, or may elect to have a percentage of premiums applied to TIAA and the remainder (up to 50%) to CREF, the variable annuity.

These percentages may be changed once a year, effective July 1. All participants who wish to change current percentages must make application at the Personnel Office **prior to June 1, 1964.**

EXERCISE GROUP

The Exercise Group will not meet this week, but sessions will resume again as usual the week of June 1.

SOFTBALL FIELDS

The softball fields on Brookhaven Avenue, Princeton Avenue, and Upton Road are to be used **only** for scheduled league games, scheduled practices, or scheduled department games. **No activity is scheduled prior to 5:00 p.m.,** and the fields are not to be used before this time.

The field reservation schedule is at the Recreation Office, 3 Center Street.

AROUND THE BASE PADS

by: Bob Carciello

Medical could have used a doctor when they met up with the Blue Jays last week: The birds posted a decisive victory over the Medics, 16-0. Tom Prach (2) and Phil Stohr contributed three homers for the Jays and Carl Canterra allowed only four Medics a base hit. In other Brookhaven League action, Electronics posted their second victory by downing Metallurgy, 12-5. Dirty Sox won their first game of the season by defeating Cosmotron, 6-5.

In the Laboratory League, Kludge continued to set the pace by notching two more marks in the win column. They trimmed the Odd Balls 12-8, and handed the Mets their fourth straight loss, 14-6. Kludge is now 4-0 on the season. They've beaten all other teams in the League except the Potsareebies and are not scheduled to play until June 2. The Potsareebies and Bankers engaged in a thriller, with the Pots coming out on top, 5-4. With two out in the bottom of the sixth and trailing 4-2, George Woodson doubled down the left field line. Woodson scored on an error, and Bruce Leahy ripped a double to right center to drive in the tying run. John Sucher followed with a single, scoring Leahy and what proved to be winning run.

Over in the National League, the cellar door is closing tighter and tighter as the Chamber Chaps dropped their third decision in as many games played. This time it was the Old Timers posting a 13-6 decision. The Phoubars rallied in the bottom of the seventh with eight runs to take away an almost sure victory from the Bubble Boys - the final score: 15-14. Pappy's Poopers continued their winning by downing the Upton Downers, 19-11.

BRIDGE NOTICE

There will be a duplicate bridge tournament at the Recreation Hall on Thursday, June 4, at 8:00 p.m. sharp. Admission is \$.75 per person and everyone is invited.

For further information, call Joel Malament, Ext. 2936.

The winners of the last game were:

1. MALAMENT & SKOUGAARD (67% game)
2. COCKRILL & TUNNEY (64% game)
3. THE ROTHBARTS (52½% game)

SKIN DIVERS' CLUB

A meeting of the Skin Divers' Club will be held on Thursday, May 28, at 12:00 noon in the Recreation Hall to discuss plans for the club dive on Friday, May 29. Please attend or have your representative attend.

PERSONNEL SERVICES

Recreation Office — 3 Center Street
Daily 9:00 a.m. — 1:00 p.m.



UNITED STATES FLAGS

Because of many requests, the sale of U.S. flags has been renewed. Through a special group purchase, we have available for sale a 3' by 5' flag with color-fast stars and stripes on a 6' by ¾" bright aluminum two-piece pole with halyard, eagle ornament and a metal holder. List price is \$6.50; our price, \$3.95.

METS TICKETS

Seats are still available for the following dates: June 2, Houston; June 10, Chicago; June 21, Philadelphia; June 23, Pittsburgh; July 9 and 10, St. Louis; July 12, Cincinnati; July 29, Los Angeles; July 31, and August 2, Houston. We also have some dates still open during the remainder of August and September.

DISCOUNT TICKETS

Tickets are now available for "Around the World in 80 Days," playing at the Jones Beach Marine Theater. These tickets are good for all performances of the 1964 season **except** Saturdays: June 28 to September 6. Prices with discount are: \$4.00 and \$3.20.

SWIMMING POOL

The Pool will remain on its present schedule (Tuesday, Wednesday, Thursday, and Friday, 5:00 p.m. - 10:00 p.m.) until June 19. On June 22 it will open on its full time summer schedule: Monday through Friday, 2:30 p.m. - 9:30 p.m. Season tickets will not be sold in advance for the summer schedule. However, they will be available for purchase at the Pool on or after June 22. Season prices will be announced in the near future.

SOLUTION TO CHESS

- | | |
|-------------------|-----------|
| 1. P-R8 (N) Check | 1. QxN |
| 2. Q-B2 Check | 2. K-R3 |
| 3. Q-B6 Check | 3. B-N3 |
| 4. Q-B1 Check | 4. K-N2 |
| 5. Q-R1 Check | 5. K-N1 |
| 6. Q-R8 Check | etc. etc. |

BOWLING PARTY PICTURES

Since everyone's asking for them, orders for copies of the pictures taken at the Bowling Awards Presentation Evening will be accepted at the Recreation Office until June 12. Cost per print is five cents.

BNL VISITORS

A group of radiologists from Queens General Hospital toured the Laboratory on May 26, and Brooklyn College graduate students in Chemistry will visit the site on May 28.

The Visiting Committee of the Biology Department meets at Brookhaven on May 27 and 28.

CAFETERIA SPECIAL

Thursday, May 28

Small Juice
Celery & Olives
Tossed Salad
Roast Turkey
Two Vegetables
Cream Pie
Beverage
\$.99

CLASSIFIED ADS

FOR SALE

1957 CHEVY - 210 4-door wagon, r&h plus auto. Many new parts incl. 4 new tubeless nylon tires & Sears cylinder head. Asking \$450. E. Potter, Ext. 2456 or TU 8-1179 after 7.

1955 CADILLAC - 2-tone green, excel. cond. \$400. J. Costanzo, Ext. 548 or AT 9-0876.

1958 JAGUAR XK150 - Hardtop coupe, new rugs, engine just overhauled. \$1500 firm. 878-0071 after 6.

1949 FORD - Convertible club coupe. A real gem. Original 60,000 mi. Engine, top & unused upholstery. Will make California without difficulty. All shop manuals, handbooks, bill of sale go with car. This is an enthusiast's car. Best offer over \$450 takes it. F. Kaiser, Ext. 2278.

1963 TRIUMPH SPITFIRE - Conv., tonneau cover, r&h, 13,000 miles, orig. owner. Must sell, leaving Lab. \$1,800. Phyllis, Ext. 2575 or GR 5-0650 after 5:30.

1963 OLDSMOBILE - Conv., r&h, power steering and brakes, low mileage, perfect cond. \$2,700. L. Mingino, Ext. 2296.

1955 OLDSMOBILE - Convertible, fully powered. Clean, reliable transportation. \$275 or best offer. AT 6-9260.

1954 FORD - 2-door sedan. Good, reliable transportation. \$75 or best offer. AT 6-9260.

1959 SUNBEAM - Convertible, new top, good shape. \$550 firm. LT 9-1342.

1957 FORD - Excel. shape, one owner. \$295. Ext. 2457 or 878-0074.

1961 BUICK - Convertible, fully powered. White with red interior. Very good cond. \$1800 or best offer. M. Keller, Ext. 2654.

1958 PLYMOUTH - 4-door, power brakes, recent valve & ring job, new trans. \$450. Chas., Ext. 2811.

1953 CADILLAC - Full power, new carburetor, plugs, and points just installed and body repainted. Fairly clean interior. Orig. slip covers still on. This week special only \$190. Ray, Ext. 2196 after 5:00 p.m. or 878-1975 before.

1954 CORVETTE - Good mech. shape, tires. Needs top & paint. Ext. 2254 or SH 4-3120.

1940 FORD PICKUP TRUCK - With 1953 Mercury engine, new clutch, rebuilt transmission, good tires, new battery, good cond. Asking \$300. HR 3-1658.

1963 AUSTIN HEALEY SPRITE - Mark II, black with red interior, w/w tires, just had 10,000 mile inspection. In good cond. \$1,350 firm. Ext. 2504 or AT 9-0243.

1957 DODGE - V-8, auto. hard top, 5 good tires & 2 snow tires, P.S., low mi. \$450. P. Lieberman, Ext. 7732.

1953 PLYMOUTH - 4-door sedan, new tires, brakes, battery. Good transportation. Best offer over \$50. V. Mann, Ext. 2221.

1957 FORD ENGINE - 6 cyl., auto trans. Good cond. \$75. R. Meyer, Ext. 481 or LT 9-5757.

1953 CHEVROLET - Great vintage year for rugged automobiles. 4-door sedan, mechanically & electrically in excel. shape. Body shows effects of age. Reliable transportation. \$125. V. Cohen, GR 5-4038 evenings.

1961 MERCURY - Meteor, 8 cyl., auto., r&h, 2 door. \$1,200. Jake, Ext. 2211.

1958 NASH - Metropolitan, hardtop coupe, new seat covers, good paint, new battery & valve job. \$200. 878-0071 after 6.

1963 CHEVY II - Sedan, excel. cond., 1 year mfg's guarantee still in effect. \$1,575. Ext. 624.

1957 OLDSMOBILE - Holiday coupe, very good cond. Fully powered. \$375 firm. SH 4-2821.

1953 AUSTIN HEALEY - With 265 Corvette engine. Perfect installation, firewall not cut. New blue paint. 3 speed Corvette transmission. \$1,500. 878-0071 after 6.

1957 MERCURY - Late model, power brakes & steering. Good motor & body with 4 new tires. \$350. AN 5-7492 after 6.

1963 CORVAIR - Monza convertible, r&h, 4-speed transmission, excel. cond. Best offer over \$1800. HR 3-4782 or SH 4-3073.

1962 OLDSMOBILE - Blue convertible, full power, 4 new tires. Ext. 557 or GR 5-4312 after 5:30.

SAILBOAT - Bulls-eye fibreglass 16 foot keel sailboat with dacron mainsail, jib and jenny. Excellent condition. \$1,475 firm. Ext. 2876.

17' SLOOP - Hull & deck fibreglassed. Excel. cond. Ext. 2369 or GR 5-8073 after 6.

14' SAILBOAT - Good cond., ready for the water. B. McKenna, Ext. 571 Tues. or Thurs. or WA 9-6047 after 6.

SUPER SAILFISH - Excel. racing record. \$250. Ext. 393.

SAILBOAT - Snipe, good cond., cotton sails. \$200. AT 6-8945.

8' MAHOGANY PRAM - Just refinished. \$50. Ext. 482.

10' PLYWOOD YACHT - With oars & 3½ hp Evinrude. All seams fibreglassed. New trim paint. \$75. Frank, Ext. 2152 or WA 9-6004.

17' PICNIC - In parts. Fiberglass hull, deck, etc. Ready to assemble. Bob, Ext. 2485.

23' HUNTER - C. Raymond Hunt design fiberglass cruiser. Prototype of many winners of Miami-Nassau power boat race. 40 knots

with 225 hp V-8 Gray. Sleeps 2. The ultimate in inlet runners. Ext. 2513.

14' RUNABOUT - Century, fibreglassed to spray rails & ready for water. 900 lb. capacity tilt-bed trailer. 12 hp motor with 6 gal. tank. \$425. 50 lb. mushroom mooring anchor with galv. chain & float. \$20. B. Lundgren, Ext. 7782.

SNIPER - Hull & sails in good cond. \$175. T. Honnett, Ext. 566.

CABIN CRUISER - 28 foot 1962 Pembroke. Used 1 season, completely equipped. 185 hp Chrysler engine. Will sacrifice for quick sale. S. Pollis, Ext. 2677 or GR 5-0916 after 5:30.

HOUSE - Cape Cod on heavily wooded ¼ acre in Park Hills section of Selden. Storms & screens throughout, full cellar, 2 bedrooms downstairs, 2 bedrooms partially completed upstairs, living room, dining room, & eat-in kitchen. SE 2-2476.

HOUSE - Patchogue, 2 bedroom Cape Cod, dining room, garage, full basement, oil hot water heat. Corner property, nice neighborhood, near schools & stores. Low taxes. \$11,300. AT 9-0371.

HOUSE - Most desirable location in most desirable section of Huntington. 9 rooms on beautiful wooded acre close to harbor, marina, beaches. 4 bedrooms, 3 baths, 2-car garage, 23' living room, paneled dining rm., eat-in kitchen, lg. family room, laundry. A steal priced in the low 30's. HA 7-5733.

HOUSE - Smithtown area, 7 room ranch, 3 bedrooms, Hollywood swimming pool (20' x 40') concrete. House is air conditioned, with 2½ car garage attached, aluminum storms & screens, wall-to-wall carpeting, appliances, and many extras. Covered patio with brick barbecue. Situated on beautifully landscaped ¾ acre. Priced in mid \$20's. AN 5-0913 after 6.

PROPERTY - Heavily wooded building lot, ¾ acre at Tides on the Sound, Rocky Point. Custom homes only in this area. On cul-de-sac. Road paved with curb. Utilities at curb. 5-minute walk to private beach. Mike, Ext. 2718 or 2830.

HOUSE - Solid brick ranch, 4 rooms & bath in Shirley near Mastic Beach Village. Oil steam heat, 100x100. Asking \$14,500. EM 3-6048 or EM 3-6673.

HOUSE - Riverhead, Riverleigh Avenue. 3 bedrooms, storms & screens, oil hot air heat. 1½ baths, 2 car garage. PA 7-3249 after 6.

PROPERTY - Cleared with scattered oak trees. 100x150 on Matthews Drive, Speonk. South of Montauk, paved road and all utilities. In nice residential area. \$1200. Will discuss terms. O. Brown, 288-6238 weekends.

AUDIO AMPLIFIER - Fisher Model CA 40. 25 watt. Excel. cond. Ext. 2876.

REFRIGERATING MACHINE - GE type WR 90X7 compressor & freon unit. Never used, in original crate. Best offer over \$20. F. Mo, Ext. 2684.

BILGE PUMP - 6 volt "Water Puppy." Like new. \$12. Set of 5 "Craftsman" wood turning chisels. Used but in good cond. \$4. B. Bornstein, Ext. 2228.

POOL TABLE - 7' with ¾" bed. Set of 2¼" balls, cues, chalk, tips, & wall rack. Excel. cond. \$225. EM 3-6562.

18" REEL MOWER - With grass catcher, man-powered. R. Skelton, Ext. 2950.

SNOWFENCE - 50' in 3 sections with steel stakes & gate. \$7.50. Ext. 2101.

ROTARY LAWN MOWER - Craftsman 20" self drive. Good cond. \$20. R. Meyer, Ext. 481 or LT 9-5757.

POOL - Doughboy, 10'x30". Good cond. \$10. Hank, Ext. 601.

CAMERA - Argus C-3, 35 mm, with carrying case & flashbulb attachment. \$25. M. Willigan, Ext. 462.

MISCELLANEOUS - Commanche & Cheyenne AC supply, mike, speaker, cables, manuals. Antenna required. \$150. LYSCO500 CW transmitter, \$45. AF67 transmitter & manual, \$70. PMR7 Receiver & manual, \$60. ART13 transmitter & manual, \$50. Super 12 converter & manual, \$30. BC312 with NL and AC supply. \$50. PA 7-5614.

BABY CARRIAGE - In very good cond. Wheels can be removed & upper part may be used as car bed. \$30. Jake, Ext. 2211.

PORTABLE PLAYPEN-CRIB - Can be folded. Incl. mattress. Very good cond. \$10. Jake, Ext. 2211.

HOUSE TRAILER - 10'x55' Colonial furnished throughout. 1963 model, small expanded living room, on 80x100 plot off Summit Blvd., Westhampton. All set up and ready to move in. Will help secure mortgage. \$7,500. O. Brown, 288-6238 weekends.

TRAILER - 4x8 flatbed trailer, new tires and spare. Hitch incl. Tow bar extends for a boat. \$40. O. Brown, 288-6238 weekends.

MISCELLANEOUS - Model "A" engine, \$45, compl. with truck clutch. Evinrude 35 hp elec., 1958, never used, \$170. 6 door refrigerator, \$75. With compressor, \$150. MacDonald, Ext. 2814.

BASIC AMPLIFIERS - 25 watt monaural heath-kits (W5-M). 2 each, one completely wired and almost new. Other in kit form with parts mounted on chassis. D. Miller, Ext. 686.

RANGE - GE twin oven, \$50. Coldspot refrigerator (old but in good shape), \$10. AT 6-1227.

PAIR OF ORCHESTRA TICKETS - Row B, Mat., Sat., June 6, for Costigan's play "Baby Want a Kiss" (Paul Newman, Joanne Woodward). \$5.40 each. Ext. 2924 or AT 6-0428.

BABY FURNITURE - Infant seat, Allwin carriage, baby tenda, walker & playpen. All in excel. cond. Best offer. Ext. 361 or AN 5-7465 after 6.

STEREO TUNER - Harmon Kardon FM multiplex F500X stereo tuner with enclosure. Cost 1 year ago \$182.95. Price now \$100. Also miscellaneous precision tools - calipers, micrometers, etc. Half of list price. Sears wet grinder, no motor. \$10. J. Ferrer, Ext. 2687 or 878-0792.

HOUSE TRAILER - 21' Travelo. Sleeps 4 or 5. Refrigerator, sink, stove, cabinets, oil burner. Gas or electric. Incl. new trailer hitch. Good cond. \$850. GR 5-0699 or GR 5-1779.

STEREO CABINET - 6' long, walnut, in contemporary motif. \$100. 2 contemporary type living room chairs complete with slipcovers. \$50. each. D. Sisson, Ext. 2558.

REFRIGERATOR - \$10. AT 6-9260.

GERMAN SHEPHERD PUPPIES - Healthy, sound temperaments. From my obedience-trained dam and champion Raps vom Piastendamm. 3 females & beautiful black-tan male. Priced from \$75 (according to quality). P. Warner, Ext. 425 days or RA 8-0273 evenings.

TRAINS - "O", "027" gauge. 2 train sets with controls, track, accessories, incl. automatic and manual switch tracks. \$25. Don, Ext. 2735.

RACING CAR SET - Aurora 500, HO scale, 4 cars, lap counter, railing, plenty of track, power pack and controls. Like new. Cost \$30, sell for \$20. Don, Ext. 2735.

AUTOMATIC WASHER - Westinghouse, new in 1960. Needs a new tub & gaskets but otherwise in good cond. \$10 takes this gem. R. Dumont, Ext. 347.

WRENCH SET - Craftsman open end wrench set, 1/4" through 1". All in excel. cond. \$6.50. Bobbie, Ext. 2179.

MISCELLANEOUS - Hallicrafter SX71 receiver, 5 bands to 56 MC, crystal filter, BFO; band spreads, ham bands NBFM position. \$100. Triplet 310 miniature VOM 20,000 ohms per volt, with leather case & leads. \$25. 20' steel tower, triangular, bolted construction. \$15. Heavy duty regulated power supply, 6.3 AC, 5.0 AC, 250 volts DC. \$15. 2 meter 2 nu-vistor cascode pre-amp. \$7. Crossman CO2 pellet rifle, 10 shot. \$20. W. Fedrich, Ext. 548 or SH 4-3926.

WANTED

CANOE - In reasonably good cond. F. Barnes, Ext. 488.

TELESCOPE - In good cond. HR 3-0178 after 6.

HOMES - For 4 kittens. 3 males: 1 black with white bib & paws (George Harrison), six-toed gray tiger (Ringo Starr), six-toed black (Paul McCartney). 1 female: gray tiger with white bib & paws. R. Bornstein, HR 3-1813 between 4 & 8.

SAFE - Reasonably priced. Will arrange for removal. C. Ferraro, Ext. 591.

UTILITY TRAILER - Good cond. Reasonable. Ext. 2816 or GR 5-7372 after 6.

BOAT MODELS - Any donations of old boat models gladly received. J. Victoria, Ext. 493.
2 TWIN HOLLYWOOD BEDS - Also automatic washer & dryer in good cond. Ext. 7705.

LIVE-IN HELPER - Member of BNL summer visiting staff seeks live-in (apartment area) helper. Must have driver's license for shopping, etc. Prepare meals for father & 6 year old son. Light housework, full day & night off if desired, plus occasional evenings. College girl or middle-aged woman. \$50 per week, room & board. J. Victoria, Ext. 493.

ENCYCLOPEDIA - Britannica, Americana, or World Book. Fairly recent, 5 years old or so. About \$50. C. Cantera, Ext. 2376.

CAR - Wanted for June and July. Prefer to hire. Write Dr. E. Leader, Bldg. 50A, Room 3115, Lawrence Radiation Laboratory, Berkeley, California. 94720.

HOUSE - Wanted to rent. 4 bedrooms, unfurnished. For scientist visiting Sept. 1964 to Sept. 1965. Ext. 2853 or AT 6-0798.

FOR RENT

HOUSE - Unfurnished, 6 rooms, detached 2-car garage, heat & water included. Screened porch, large maintained lawn. In Patchogue near schools & shopping. \$125 per month. Available around July 1. GR 5-5290.

BEACH HOUSE - In Deep Creek on Fire Island. GR 5-7275 after 5:30.

BOAT TRAILER - Can accommodate boat up to & including 20'. Reasonable rates. GR 5-7275 after 5:30.

APARTMENT - Attractive, completely furnished 2 1/2 room apartment: living room, bedroom, kitchenette, bath, private entrance, lovely quiet residential area, Oregon Ave., Medford. Available July 1 (Prefer all-year-round tenant) \$115 per month, all utilities incl. GR 5-5052.

HOUSE - In North Patchogue, convenient to schools and shopping. Completely furnished, 3 bedrooms, kitchen, dinette, living room, fireplace, and 2 full baths. Large back yard, garage, washing machine, dryer. Available Aug. 16, 1964 to June 30, 1965. GR 5-4038 after 6.

APARTMENT - Unfurnished in Center Moriches. 3 rooms & bath. \$90 per month, utilities included. 878-1944.

ROOM - Plus share of utilities, kitchen, etc. 281-7560 evenings.

HOUSE - 3 small rooms, unfurnished. \$55 includes electricity. YA 4-3946.

CARPOOLS

WANTED - To join or form carpool from Mt. Sinai area. B. Bornstein, Ext. 2228.