

# the Bulletin Board

VOLUME 17, NUMBER 46

Published by the BNL Personnel Office

AUGUST 18, 1964

## BERA FILM SERIES

J.M. Synge's

### THE PLAYBOY OF THE WESTERN WORLD



Thursday, Aug. 20, 8:30 p.m., Lecture Hall

That the premiere of "The Playboy of the Western World" was a tempestuous occasion at Dublin's Abbey Theatre in 1907 can only be the source of mild astonishment a half century later. For who, outside of the Irish, could take umbrage at Synge's masterpiece or fail to be enthralled by the enormous joie de vivre of his characters and the soaring lyricism of his language.

"Playboy" is the tale of Christy Mahon, and an ever-widening circle of admiring Irish lassies attracted by his tale of whacking his "da" to death with a spade. He wins the heart of Peggie Mike (Siobhan McKenna), but everything is lost when the elder Mahon shows up. At the end, as father and son recede into the distance, a grieving Peggie says, "I've lost him surely, I've lost the only playboy of the western world."

(continued on page 3)

## DECEASED

The Laboratory has learned of the death of Retired Fire Chief Walter F. Schmelz on Aug. 13, 1964. Chief Schmelz was employed by the Laboratory in 1947 and served as Chief of the Laboratory Fire Department from 1949 to 1962.

Mr. Charles E. Porter, Jr., employed in the Nuclear Engineering Department as a physicist since August, 1960, also passed away on August 14, 1964.

## DEADLINE NEAR FOR BOWLING TEAMS

League bowling is one of the most popular forms of recreation among BNL employees. Last year 53 teams took part, representing 10% of the Laboratory staff.

Leagues bowl once a week. There is usually no conflict with other social activities since games start at 6:00 p.m. There will be leagues on both the north and south shores with a choice of three or more nights of the week. The cost is \$3.50 per bowler plus the actual cost of games bowled. No dues, and no charge for missed games. You don't even need to own a bowling ball.

Scoring is on a handicap basis. Tyros are as welcome as pro-average bowlers.

Enter as early as you can. Earliest entries have priority in choice of leagues. If you can't seem to get enough bowlers together (five minimum for men, four for ladies), call the Recreation Office and get your name on the list with other potential team members.

Entry blanks are available at the Recreation Office.

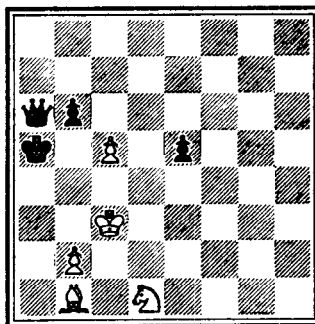
**August 26 is the deadline !**

## BNL VISITORS

The Graduate Physics Society from the University of Toronto will take a tour of the Laboratory on August 19.

## CHESS PROBLEM

In this week's problem, Black has a queen for a knight and a bishop, plus a passed pawn, but it is White's move and win. Solution elsewhere in the BULLETIN BOARD.



## POOL DAY

This coming Tuesday, August 25, we've scheduled our annual Splash Party for all children who have participated in our swimming instruction program and our on-site residents play session.

The doors will be open from 11 a.m. to 2 p.m., and no admission will be charged. Since the children will be skipping lunch, we'd advise a light snack before leaving home.

The theme of the program is "fun" with novelty games and races designed so that everyone can compete, and there will be prizes galore so that no one will go home empty handed.

## MR. AND MRS. BOWLING LEAGUE

Due to the interest shown in the formation of a Mr. and Mrs. Bowling League at BNL, a league organizational meeting will be held at noon on Friday, August 21, in the Recreation Office, 3 Center Street. All interested bowlers are welcome. If you are unable to attend, contact L. Baker, Ext. 591, beforehand.

## FISHING FILMS

Over 130 enthusiasts turned out at the Recreation Building last Thursday to enjoy a two-hour program of exciting films and liquid refreshments provided by the Rheingold Company.

The program was so well received that plans are already underway to make this an annual event. Orchids go to John McCafferty, our fishing committee chairman, for his efforts in making this a successful evening's entertainment.

## BRIDGE NOTICE

For those who have 299 master points and aspire to be Life Masters (300 necessary), Thursday night, August 20, is a wonderful opportunity. That evening at 8:00 p.m. there will be a duplicate bridge tournament in the Recreation Hall. An entire master point will be awarded to the winners if five tables compete.

Admission is \$.75 per person. For further information, call either Joel Malament, Ext. 2936, or Sandy Wagner, Ext. 618. (Everyone is welcome. Employment at the Laboratory or 299 master points is not a requirement.)

**AROUND THE BASE PADS**

by Bob Carciello

**FINAL STANDINGS OF THE CLUBS****Brookhaven League**

TEAM	WON	LOST	PCT.
Blue Jays	12	3	.800
Medical	9	6	.600
Metallurgy	9	6	.600
Dirty Sox	7	8	.467
Cosmotron	6	9	.400
Electronics	2	13	.133

**National League**

Upton Downers	13	2	.867
Pappy's Poopers	10	3	.769
Old Timers	9	4	.692
Chamber Chaps	4	10	.286
Bubble Boys	4	11	.267
Phoubars	2	12	.143

**Laboratory League**

Kludge	13	3	.812
Potsareebies	11	5	.688
Odd Balls	9	7	.562
Mets	5	11	.313
Bankers	2	14	.125

**ALL STAR GAME ON WEDNESDAY, AUGUST 26****Free Refreshments for all League Participants**

After a long, hard season the new champions have emerged from the crop of slop-ball players. The Blue Jays wrapped up the season by defeating Dirty Sox 15-11, thereby winning the Brookhaven League for the third straight year. The Upton Downers won their first pennant in their career, finishing with a 13-2 record. Down in the Laboratory League, Kludge had to battle to the finish but made it. In a double header with the Potsareebies it was a do or die for Kludge after the Pots crushed them 10-2 in the opener. Kludge bounced back in the night cap to win the game 19-13 and the pennant.

Managers, Paul Kelly of the Blue Jays, Tony Godi of the Upton Downers, and John Alston of Kludge, will have the honor of managing the all star teams of their respective leagues. The annual classic will take place August 26 on field No. 2. It will be a nine inning game with each league playing against the others for three innings. The winner will be the league which scores the most runs. Last year the Nationals won over Laboratory and Brookhaven all stars in that order. It proves that all the good players are not in one league. So, the action will be there, coupled with fun and refreshments for all those who want to come down to witness the abilities of the all stars.

**LONDERGAN DEFEATS AUSKERN**

Last Thursday before an interested crowd of spectators, Tim Londergan defeated veteran tennis campaigner Al Auskern in the finals of the Men's Singles Championship as he took both sets by the tune of 6-2.

The first set saw Tim dash off to a quick 4-0 lead before Al could settle down. Al then took the fifth and seventh games, but Tim's hustling play gave him the eighth game and set 6-2.

It looked like the second set, however, might be a little different; but the sixth game was the decider. Here, with the score in games 3-2 Londergan, it ap-

peared that Auskern might catch Tim; but with the score at deuce several times, Londergan finally gained the advantage and point to take the game. Tim then went on to take the next two games by his fine shots and faultless play and become singles champion. Congratulations are extended to the new champion and runner-up for their hard play throughout the tournament and in the finals.

Trophies were presented to the finalists on behalf of B.E.R.A.; and special thanks are extended to our volunteer judges, Al Prodell, Larry Passel, and George Collins, for their excellent officiating.

**Arrivals and Departures****WELCOME TO BNL**

AUI	
Charles Samberg	Ext. 2117
BIOLOGY	
Emory T. Adams, Jr.	386
FISCAL	
Gertrude Gaetjens	2588
PHYSICS	
Myron Danzig	
Frederick J. Hamilton	
PLANT MAINTENANCE	
Richard H. Redden	639

**RECENT DEPARTURES**

APPLIED MATHEMATICS	
Lourdes Zavitsas	
CHEMISTRY	
Kohji Shimaoka	
NUCLEAR ENGINEERING	
Crandall J. Sanna	
PHYSICS	
Karen A. Roeser	

**POOL SPECIAL**

Last Friday's "pool special," our annual Inner Tube Derby, featured an exciting race between David Parsons and Pat Kelly. Parsons was the winner by the narrowest of margins.

This Friday's "pool special" will be a Button Hunt.

**3:00 p.m.****All Children Welcome****UPTON RIFLE AND PISTOL CLUB**

Attention Pistol Shooters! There will be a pistol match Thursday, August 20, at 5:30 on site. The match is open to any caliber.

**SOLUTION TO CHESS**

- |               |  |
|---------------|--|
| 1. P-N4 check | 1. K-R5  |
| 2. N-N2 check | 2. K-R6  |
| 3. N-B4 check | 3. K-R5  |
| 4. B-B2 check | 4. K-N4  |
| 5. N-Q6 check | 5. K-B3  |
| 6. P-N5 check | 6. QxP. Now if White's knight would capture the queen and the king takes the knight, followed by KxP, Black would draw, so |
| 7. B-K4 check | 7. KxP   |
| 8. N-N7 mate. |  |

**CASTING CALL!**

Tryouts will be held at 7:30 p.m. in the theatre on August 24, 25, and 27 and September 8 and 10 to select a cast for "Separate Tables."

**The Playboy of the Western World - cont'd**

Thanks to the motion picture camera, the stirring performances of Siobhan McKenna and the Abbey Theatre players have been captured for all times, surrounded by the spectacular landscapes of County Mayo photographed in Eastman-color.

"... The play is one of the classics of the modern theater. To hear it in the high brogue that marked its first performance at the Abbey Theatre, and to watch it with the emphasis of McKenna's exquisite cheekbones and Raymond's long sad jaw is a joy absolute and unbounded."

— NEWSWEEK

"At last, someone has had the good sense to make a ripe and rousing film of Synge's great comedy! Classic piece of strong, sarcastic humor, bubbling and bursting with wonderful folk-imagination and force of character. Every lover of Irish theatre should see this handsome color film."

— NEW YORK TIMES

"A world masterpiece... what language, what eloquence."

— WINSTON, NEW YORK POST

"What Miss McKenna and her associate Irish prove is that 'The Playboy' is close to the funniest farce-comedy ever written in so-called English. And, correlative in a west county setting. Mayo to be exact. Synge's fable finds the eerie beauty of landscape that must have influenced its writing, but which has always been missing in the play on the stage."

— THE EVENING STAR, Washington

**CAFETERIA SPECIAL**

**THURSDAY, AUGUST 20**

Cucumbers with Sour Cream  
Veal Parmigiana with Spaghetti  
Celery and Olives  
Rice Pudding  
Beverage  
**\$ .99**

**CLASSIFIED ADS****FOR SALE**

**MOTOR VEHICLES** - 11 located in Security parking lot, available for public sale. Inspection permitted from Aug. 24 to 28 between 9 & 4. Bid opening will be held Aug. 31 at 2:30 p.m. This will be a Spot Bid Sale conducted by General Services Administration. For information, Ext. 2509.

**1952 CHEVROLET** - Carry-all. 6 beach tires & rims. 4 speed trans. Partially completed bunks, new paint job. 4x6x12 box on top. Needs engine work. J. Capute, Ext. 2407 or AT 9-2134 after 4.

**1961 RAMBLER** - Classic sedan, perfect cond., excel. tires, auto. trans. Best offer. JU 8-0047.

**1963 OLDSMOBILE** - F85 Cutlass convertible, auto. trans., ps, bucket seats, r/h, 18000 miles, showroom cond. \$2,275. J. Jack, Ext. 7779 or AT 6-9260 evenings.

**1957 PLYMOUTH** - 2 door sedan, auto. trans., 6 cyl., running cond., new tires. \$150. Jake, Ext. 2211.

**1960 MERCURY** - 2 door, black sedan, white top, r/h, w/w's, 8 cyl., std. trans., must sell. \$750. Ext. 2473.

**1954 OLDSMOBILE** - Engine rebuilt spring of 1963, new trans. Body has cancer. \$175. Capute, Ext. 2407 or AT 9-2134 after 4.

**1962 FORD** - Galaxie 500, 4 door hardtop, auto. trans., ps, excel. cond. \$1,495. Ext. 2800 or 2967.

**1960 FIAT 1200** - Owner leaving country. Beautiful cond., orig. 20,000 miles. 30 mpg, best offer over \$550. A. Ghatak, Ext. 665.

**1957 RAMBLER** - Cross Country station wagon, auto. trans., r/h, reclining seats, excel. cond., new tires. \$500. YA 4-3522.

**1964 CHEVROLET** - Impala, V8, std. trans., overdrive, extras, 5,000 miles. \$2,250. W. Dabberdt, Ext. 456.

**1960 COVAIR** - Mint cond., black, 4 door, auto. trans. \$900. Ext. 2743.

**1955 OLDSMOBILE** - Starfire 98 convertible, super-duper engine, ps/pb, power windows & seats, w/w's. For those who think young. \$225. M. Stern, Ext. 2827 or AT 6-0041 after 6:30.

**1955 WILLY'S** - Station Wagon, 6 cyl., 4 wheel drive. Excel. mech. cond. \$600. B. Johnson, Ext. 2410 or 2411 or LT 9-7894 after 5.

**1959 PLYMOUTH** - 2 door sedan, 6 cyl., std. trans. Good transportation. Make offer. J. Frizzola, Ext. 458.

**1963 CHEVY II** - Excel. cond., 6 cyl., std. trans., r/h, 4 new tires. \$1,400. J. Fontana, Ext. 624 or SH 4-2821.

**1960 FALCON** - Deluxe 4 door, auto. trans., r/h, padded dash & visors, excel. tires, vinyl seat covers. \$725. E. Grist, Ext. 383 or WA 9-4915 after 6:30.

**1957 T-BIRD** - 2 tops & tonneau. Good cond. \$1,000. E. Raka, Ext. 310.

**1957 MERCURY** - Late model, pb/ps, excel. body with rebuilt engine & 4 new tires. \$300. AN 5-7492 after 6.

**1958 FORD** - Fairlane, 4 door sedan, T-Bird engine, auto. trans., r/h, w/w's. D. Oakley, Ext. 2158.

**1958 BUICK** - Hardtop, 4 door, auto. trans., V8, ps/pb. P. Lieberman, Ext. 7732.

**1958 BUICK** - 4 door hardtop. 5 new w/w's, ps/pb, auto. trans., r/h. \$650. Ext. 7111.

**1964 CHEVROLET** - Super Sport, white with red interior, ps/pb, r/h, w/w's. Asking \$2,950. MA 9-4929 after 6.

**1962 MGA** - Roadster, wire wheels, r/h, abarth exhaust, hard top. \$1,675. Ext. 2871.

**1957 PLYMOUTH** - Station wagon, auto. trans., ps/pb, good tires, new brakes. Car in exceptionally good cond. \$475 firm. Ext. 367.

**14' SAILBOAT** - Good cond., soon to lose home (owner leaving Lab). Can be adopted by one who makes best offer over \$200. B. McKenna, Ext. 571 or WA 9-6047.

**17½' BOAT** - Grady-White, 75 hp Johnson, Holsclaw trailer, all 1964. Many accessories. Must sell. Best offer. SH 4-5678 after 5:30.

**26' CABIN CRUISER** - Chris-Craft, 1955, 105 hp Chris-Craft engine overhauled 1964. Sleeps 4, formica galley, pressure water, head, dinette, ample storage, 2 pilot seats, 2 elec. wipers, navy top, curtains, cockpit cover, extras, asking \$2,400. Ext. 2158 or JU 1-2997.

**OUTBOARD MOTOR** - Small only 16 lbs., 1962 model, used only 2 hours. Ext. 423.

**14½' RUNABOUT** - Thompson, fiberglassed bottom, all hardware, recently painted, ready for use. Also Mastercraft trailer. Both good cond. Asking \$245. R. Meyer, Ext. 481 or LT 9-5757.

**29' SKIFF** - Clipper, 185 hp Interceptor power, low engine hours, sleeps 4 in comfort, compl. with all stainless galley, stove, stand-up head, ship to shore, depth finder, stern fish well, game fishing chair, lines, life jackets, full canvas, etc. Boat in the water, better than brand new cond. Priced for quick sale at \$4,975. Ext. 591 or LT 9-5755 after 6.

**20' CRUISER** - Trojan, 60 hp Gray inboard, full canvas, head & galley, sleeps 2, in water. \$1,300. AT 9-1228 after 6.

**20' CHRIS CRAFT** - Twin 95's, sleeps 4, stand up head, loaded with extras, must sell this week. Best offer over \$3,000. GR 5-4627.

**18' CATAMARAN** - Glen L. Witt design, twin 40 hp Evinrudes, elec. starters, tachometers, speedometer, navy top, built-in gas tanks, fully Coast Guard equipped, new 12 volt battery, 2 extra propellers. Holsclaw trailer with hydraulic brakes, spare tire & wheel. Only \$2,000. E. Thompson, Ext. 2714 or AT 6-8734.

**HOUSE** - 3 bedroom ranch on 120x100 plot in East Patchogue. Full wall antique brick fireplace in living room. All electric kitchen with eat-in dinette, full basement, storms & screens, oil hot water heat, attached garage. \$17,000. GR 5-7595.

**HOUSE** - Hi-ranch in Bellport Village, near schools. 2 years old, 3 bedrooms, lg family room, 2-car garage, built-in range, oven, dishwasher, w/w carpeting, drapes, patio, beautiful corner lot, fully landscaped, sacrifice, \$20,000. AT 6-0764.

**HOUSE** - In Brookhaven, new 7 room ranch, 3 bedrooms, 2 baths, den, dining room, full cellar, hot water heat, attached 2-car garage. \$18,900. AT 6-1204.

**HOUSE** - Modern 3 bedroom ranch with garage, completely equipped kitchen, screened porch, game room, fireplace. Wooded lot 120x300 near water front on Beaver Dam Road in Brookhaven. AT 6-1155.

**SHOT GUN** - 12 gauge, 5-shot, semi-automatic Browning. \$90. Call Dave, Ext. 2191 or AT 6-0674.

**REFRIGERATOR** - Norge, large, 8 years old. \$25. Ext. 2196.

**BOOKSHELF & CABINET UNIT** - 1 cabinet, 2 book shelf units, total height 7½', total width 3' & 2½'. Can use as 1 or 3 units. \$20. Allen, Ext. 2249 or 7100.

**TV SET** - 21" Magnavox console blond wood, \$55. M. Rothbart, Ext. 2718.

**REFRIGERATOR & FREEZER** - 10.3 cu.ft., clean & in working order. Ext. 425 after 4.

MISCELLANEOUS - Frigidaire deluxe refrigerator, very good cond., avail. Aug. 27, \$65. Photographic equipment, Federal enlarger, old but in good cond., Kodak Safelight for table or wall, Vignetter, trays, etc., \$25. Baby's feeding table, \$3. Clothing, Jr. size 5-7, excel. cond. AT 6-9451.

POODLES - AKC, miniatures & toys, 7 weeks old, reasonable. W. Johnson, Ext. 482.

MISCELLANEOUS - Porch set, 7 pcs., \$35. End table, \$5. Coffee table, \$15. Liv. rm. chair, \$35. Comb. telephone table & chair, \$3. Reversible porch rug, 9x12, \$10. Mangler, Westinghouse, \$50. Green sculptured rug, 9x12, \$12. Dining room set, \$150. R. Aichroth, JU 1-5786 after 6.

DEER RIFLE - Model #35 Marlin with Weaver scope & case. Like new. A. Beckwith, Ext. 2349.

PORTABLE FAN - 2 12" fans mounted in a metal case with thermostat & 3 speed controls. \$20. Jake, Ext. 2211.

GERMAN SHEPHERD - AKC, 8 weeks old, female, beautiful markings, temperament. Black & silver. \$60. JU 8-6767.

CLIMBING BOOTS - Padded, made in Italy. Size 12 C-D. Like new. \$10. A. Wolf, Ext. 7732.

POODLES - AKC registered, toy, 7 weeks old. \$85. A. Russo, SE 2-3338.

RANGE - Chambers, with deep well and grid- dle, white with chrome top. Excel. cond. inside & out. \$100. Fred, Ext. 2413.

BED - Single with a foam rubber mattress, inner spring mattress, & heavy duty metal frame. 3 months old. \$55. M. Gundzik, Ext. 7689.

GARAGE DOOR OPENER - Radio control. 2 transmitters for cars (220 megacycle k2 kc modulation), receiver for garage. Reasonable. Harbottle, Ext. 2267.

STEREO SET - Westinghouse, 9 mos. old, like new. \$75. Ext. 2803 or 7718 after 6.

CAMERA - Leica 3C camera with special Sonnar 50mm F:1.5 lens, Elmar 50mm F:3.5 lens, Beeooy close-focus copying adaptors & Sekonic L-38 exposure meter. Recently overhauled, flash sync installed, excel. cond. with instruction books. \$100. LT 9-1342.

ELECTRIC RANGE - Full size General Motors with 3 top burners plus deep well, \$20. Also bunk or twin beds, \$30, and high chair, \$3. Ext. 2882.

STROLLER - Gendron Canadian made, 1 yr. old. Ball-bearing wheels, fringed surray top, package basket, reclining seat & foot rest. Navy blue & white. \$12. R. Dietz, Ext. 623.

21" TV - Magnavox console, \$55. M. Rothbart, Ext. 2718 or 2830.

HOT WATER HEATER - Elec., 30 gallon capacity, white porcelain cabinet. Used only 2 years. \$25. GR 5-4585.

CAMERA - 8mm movie camera, Bauer, 88D, 3 F1.9 lenses on push button turret with indiv. viewers, semi-automatic light meter coupling. Excel. cond. with case, 3 haze filters & 3 filters for indoor color film. Orig. \$350. Will sell for \$130. Ext. 7794 or AT 9-0931 evenings.

CAMERA - Polaroid land Model 80, compl. with flash & leather carrying case. Excel. cond. \$44. R. Dietz, Ext. 623.

CAMERA - Rolleicord, good cond., excel. lens (3.5), reasonable. W. Dabberdt, Ext. 456.

MISCELLANEOUS - Playpen, crib & mattress, iron, record player (Webcore). \$5 each. S. Kalbitzer, Ext. 7640 or 2309 or 281-5048.

UPRIGHT PIANO - \$90. R. Segnan, Ext. 2503 or SH 4-2681.

HOT WATER HEATER - 30 gal., gas, glass lined, used 2 months. Cost \$70. Will sell for \$30. 281-9504.

MAGAZINES FOR SLIDE PROJECTORS - Air-equip: Holds 36 2x2 slides. Seldom used and in excel. cond. Magazines orig. \$1.39; now selling at bargain price, \$.75 each. Fred, Ext. 2226.

WIRE WHEEL - 560/15 with tube & tire, \$20. Also 8" Delmonico TV, \$55; bowling ball & bag; classical, jazz, & modern records. L. Barlow, Ext. 2871.

BICYCLE - 8 speed cross country racing bike. Equipped with 2 new tires. Imported from Italy. Best offer. Bill, AT 6-8524.

#### CARPPOOLS

RIDE - Wanted from Oakdale. C. Wiesner, Ext. 2105.

DRIVER - Would like to join or start carpool from Eagle Estates, Medford. H. Geist, Ext. 2382.

DRIVERS - 2 or 3 to join existing carpool from Babylon, Lindenhurst, W. Islip area. G. Meinken or B. Crockett, Ext. 2200.

DRIVER - For existing carpool, Sayville area. J. Smolski, Ext. 7782.

#### FOR RENT

HOUSE - Furnished, available from Sept. 15 to Jan. 31. 3 bedrooms, study, living room, dining area, kitchen, 1½ bathrooms. In Bellport Village, walking distance to schools. \$175. AT 6-8849.

RANCH - Modern, 2 bedrooms, study. Very complete. On Beaver Dam Road in Brookhaven. AT 6-1155.

RANCH - 3 bedrooms in Centereach, unfurnished, available immediately. JU 8-0433.

HOUSE - On 2½ acres in Middle Island. 3 bedrooms, relaxed atmosphere. 3½ miles from Lab. \$125 per month. B. Stehnack, Ext. 7111 or YA 4-6732.

HOUSE - In East Patchogue. Unfurnished, 4 bedrooms, kitchen, living room with fireplace & w/w carpeting, 2 compl. baths, washer, dryer, refrigerator, stove, lawnmower, full basement. On approx. 1 acre. \$140 per month with lease. Available Sept. 15. AT 6-9747.

HOUSE - 3 bedrooms, living room, dining room, kitchen, 2 bathrooms. Available Sept. Ext. 2253 or HR 3-2864.

APARTMENT - Furnished in Selden. SE 2-4147 after 5.

RANCH - On Lake Panamoka. Available from Sept. 1 to June 30. 7 rooms, compl. furnished, with garage. Year-round home with all improvements. \$100 per month. Kueper, WA 9-4148.

APARTMENT - 3 rooms, furnished, with bath & all utilities. Suitable 1 or 2. 2 private entrances with private porch. In North Patchogue. Mrs. Hildreth, GR 5-2564 after 6 or all day Sunday.

HOUSE - South Country Shores, East Patchogue. Living room, 3 bedrooms, & kitchen in beautiful private community. Near all shopping and in CDS #4. Property 100x200. \$135 per month. Ext. 2912 or GR 5-7217 after 5:30.

#### WANTED

RIDERS - 1 or 2 from BNL to San Francisco to share driving and/or costs. Leaving Sept. 8-10. Will also consider anyone wishing to go at least as far as Denver or points West. A. Wolf, Ext. 7732.

OPPORTUNITY TO WATER SKI - Equipment-less enthusiasts seek opportunity to water ski. P. Lieberman, Ext. 7732.

FURNISHED HOUSE - With 2 bedrooms. Near shopping. To rent beginning Oct. 1964. H. Ruderman, Ext. 7614.

HOME - 1 male and 1 female, red kittens. 5 weeks old. Alvino, Ext. 2478 or JU 1-1853.

ROOMMATE - To share apartment in Wading River 10 miles from Lab. 4 lg. rooms. Your \$42.50 monthly rent includes all utilities except electricity. Tony, Ext. 7134.

HOME - Have several pair of pure white hybrid fantail doves that are looking for homes. No cost - just want them to have a good place to reside. They make wonderful pets. Please call Lloyd, Ext. 2196 or HR 3-2523 after 6:30 p.m.

LABRADOR RETRIEVER PUPPY - Sex and papers unimportant. Fred, Ext. 2413.

CAR - To rent for about a month. N. Dombey, Ext. 7696.

HOME - For 3 kittens, 2 females, 1 male. 273-5841.

CAMPING EQUIPMENT - Umbrella tent, sleeping bags, air mattresses, Coleman lantern, camp stove, etc. D. Ophir, Ext. 2954.

ROOMMATE - To share apartment in Wading River, 10 miles from Lab. 4 large rooms. Your \$42.50 monthly rent includes all utilities except elec. Tony, Ext. 7134.

APARTMENT - 3 or 4 rooms, unfurnished. Bellport area. Ext. 367.

CLOCK RADIO & STEAM IRON - In good condition for student leaving for college in Sept. Call AT 6-8524.

#### LOST

PIPE KNIFE - Chrome plated. Also pamphlet for rotisserie operation. Both missing in vicinity of Medical Bldg. J. Elmore, Ext. 2924.

WALLET - Man's brown zippered. If found, please call A. Kehlenbeck, Ext. 2389 or mail to Bldg. 452.

#### FOUND

SUN GLASSES - Man's, gold rimmed. Found in Bank.

KEYS - Volkswagen car keys. Found in Bank.

KEY - Single key. Found in Bank.

SUN GLASSES - Ladies. Found in Bank.

PIPE - Man's. Found in Bank.

CAMERA FILTER - Found in Medical parking lot.

MONEY PURSE - Blue with check stubs. Found at AGS.

WATCH - Man's. Found in Computer Center.

Personnel Services - 3 Center Street