

the Bulletin Board

VOLUME 17, NUMBER 49

Published by the BNL Personnel Office

SEPTEMBER 15, 1964

BERA FILM SERIES THE MUSIC ROOM

Satyajit Ray



Thurs., Sept. 17 - 8:30 p.m. - Lecture Hall

Again Satyajit Ray examines a vanishing way of life, this time in the personage of a samindar (landowner), passionately addicted to sumptuous festivals and musical soirees. However, the same addiction on the part of his ancestors has left him with a palace but very little wealth. When the time comes to hold the "Sacred Thread" ceremony for his adolescent son, he is without funds, but sponsors a splendid affair at the expense of his wife's jewels. Later, when his wife and son are killed in a storm, he shuts his music room and retires into a hermit-like existence.

Four years of self-imposed solitude pass and then, upon hearing of an elaborate musical festival by a neighbor, his overwhelming passion returns. He reopens the music room, and scraping together his last remaining funds, schedules a soiree featuring a famous dancer. His pride is restored, but the deed tragically results in his death.

"Above all, Director Ray is a teller of tales, a Bengali Balzac who envisions personal tragedy as a part of the human comedy, who can see the universal in the unique. He has created in the samindar a character both peculiarly Indian and profoundly human, a man who would not face the truth and therefore had to face the consequences. As actor Chabi Biswas portrays him, the samindar is a seething complex of contradictions: arrogant yet sensitive, pig-headed as well as lion-hearted. He is a fool but there is something magnificent in his folly, and even at his most fatuous there sits upon him the ennobling dignity of doom."

—TIME

MR. & MRS. BOWLING LEAGUE

A Mr. and Mrs. Bowling League, composed of 10 teams of employees and their spouses, has been formed. In line with the past practice of using colors to name BNL bowling leagues, this new league has been dubbed the "Black and Blue League." Len Baker will be league secretary and Gene Collins league representative.

Competition starts at 6:30 p.m. this coming Sunday, September 20, at the Patchogue Bowling Center, 138 West Avenue, Patchogue.

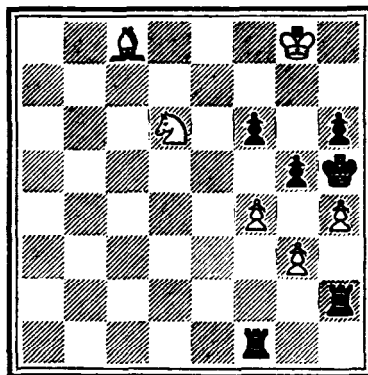
THEATER GROUP MEETING

The Theater Group will meet on Wednesday, September 16, at 8:30 p.m. in the Recreation Hall.

The program will include discussion of our forthcoming production, "Separate Tables." All those interested in making a name for themselves in the production end of "show business" are invited to attend this meeting. Don't miss your big chance.

CHESS PROBLEM

In this week's problem, Black is far ahead in pieces, but is all tied up. It is White's move and win. Solution elsewhere in the BULLETIN BOARD.



PICNIC PICTURES

Copies of the photos taken on July 25 at Operation Get-Together may be obtained at the Recreation Office at 5¢ per print. The photographs may be seen on the bulletin board in the Gym. Orders accompanied by payment, will be accepted until September 18.

THIRTY-NINTH BROOKHAVEN LECTURE

By: SIMON FREED
Chemistry Department

Title:

Chemical-Biochemical Signal and Noise
Lecture Hall - Wed., Sept. 23rd - 8:00 p.m.

A buffet supper (\$2.75) will be served at the Brookhaven Center before the lecture, beginning at 6:00 p.m. Reservations should be made at least one day in advance by calling Ext. 2302 before 5:00 p.m. or Ext. 2453 in the evenings.

PERSONNEL SERVICES

Recreation Office — 3 Center Street
Daily 9:00 a.m. — 1:00 p.m.

METS TICKETS Seats are still available for September 22, St. Louis, and September 25, Cincinnati.

MICROMET (Chemical crystals designed to aid in the prevention of rusty water) is still available for purchase by employees at a substantial savings.

Arrivals and Departures

WELCOME TO BNL

APPLIED MATHEMATICS	
James K. Thurber	Ext. 2938
BIOLOGY	
Marshall G. Elzinga	2351
Barbara J. Swisher	2240
Robert H. Whittaker	2543
CENTRAL SHOPS	
William T. Day	566
CHEMISTRY	
Robert A. Esterlund	625
MEDICAL	
Mary M. Affeldt	7133
Yvonne M. Beard	301
Panayotis G. Kaysoyannis	2866
Nina B. Pluss	301-85
Paul N. Reilly	7133
Karin Scheibe	2896
NUCLEAR ENGINEERING	
Meyer Garber	2851
Ivan Kuser	2228
George C. Lindauer	2526
PERSONNEL	
Magnolia T. Colquhoun	
PHYSICS	
Kathleen M. Derrick	7627
George R. Kalbfleisch	7657
Jagadish Sharma	7607

(Continued on page two)

Arrivals & Departures-Continued**PLANT MAINTENANCE**

Bernard Jefferson

RECENT DEPARTURES**APPLIED MATHEMATICS**

Reine M. Reelee

BIOLOGY

Frederick H. Bormann

Francesco Bresciani

Gerard M. Courtin

Grace M. Donnelly

Elmer B. Hadley

CHEMISTRY

Israel Dostrovsky

Srinivasan Raman

Freddie H. Watson, Jr.

DIRECTOR'S OFFICE

Susan M. Boudreau

INSTRUMENTATION & HEALTH PHYSICS

David O. Clark

Robert H. McKenna

Veljko Radeka

MEDICAL

Barbara E. Ehrhardt

Joyce H. Sims

NUCLEAR ENGINEERING

Ajoy K. Ghatak

PHYSICS

William N. Cottingham

Kasuke Takahashi

Russell Willoughby

Tsu Yao

REACTOR

James S. Robinson

DECEASED

Mr. Frederick Ralph Becherer, employed in the Biology Department since June of 1962, passed away on September 2, 1964.

CAFETERIA SPECIAL**Thursday, September 17**

Small Juice
Tossed Salad
Celery & Olives
Roast Turkey with Dressing
Candied Sweet Potatoes
Green Beans
Rice Pudding
Beverage
\$.99

CLASSIFIED ADS**FOR SALE**

1960 PEUGEOT 403 - Heater, sun roof, reclining seats, very good cond, 29 mpg. Urgent. Owner leaving. \$425. AN 5-4925.

1958 RENAULT DAUPHINE - Sun roof, seat belts, radio. Asking \$100. Ext. 2924 or AT 6-0428.

1957 FORD - Hard top, excel. mech. cond., good dependable transportation. A real buy at \$250. GR 5-3803 after 6.

SUMMER MIXED BOWLING LEAGUE

The final night of the summer season proved to be as exciting as any world series. First place was not determined until the tenth frame of the third game, with the Allegazetsateers losing by only 5 pins. Pat Towey waited all season for the last night and sweeps to bowl her high game and high series.



High Average
High Series Scratch
High Series Gross
High Game Scratch
High Game Gross
Most Improved
High Team Gross
666 Club Awards



Mob..... 60
Allegazetsateers..... 59
Krazy Kats..... 54
Cracker Jacks..... 49
Fearsome Four..... 47
4 Trans..... 45
Why Nots..... 43
3 Y's + 1..... 35

MEN

Lew Jacobson..... 173
Len Baker..... 583
Mike O'Brien..... 691
— — —
Mike O'Brien..... +22
Cracker Jacks..... 2432
Bill Lebitski..... 670
Walter Lambeck..... 670
Len Baker..... 667
Mike O'Brien..... 691
Mike Rothbart..... 670
Lew Jacobson..... 694

Ladies

Carol Baker..... 145
Annette Woodbury..... 508
Pat Towey..... 666
Wilma Flannery..... 195
— — —
Betty Svoboda..... +18
Pat Towey..... 666

1962 VOLKSWAGEN MICROBUS - 40,000 miles, new engine 6000 miles ago. 2 brand-new tires, new battery, \$1,300. Dave, Ext. 2716.

1964 VOLKSWAGEN - 1500 S station wagon. Just arrived from Europe. Volkswagen guarantee still in effect. J. Weiss, Ext. 2472.

1959 PLYMOUTH - Station wagon, auto. trans., ps, r/h, trailer hitch. Best offer over \$350. Ext. 2189.

1961 CHEVROLET - Impala convertible, r/h, auto. trans., V8, full power. Sacrifice, must be seen. Friday, Saturday, or Sunday call AT 6-9199 or AT 6-0177.

1958 BUICK - Special. 4 door hardtop, V8, ps/pb. P. Lieberman, Ext. 7732.

1960 FIAT 1200 - Owner leaving country. Excel. cond. \$550. A. Ghatak, Ext. 665.

1959 VOLKSWAGEN MICROBUS - Factory rebuilt engine installed April 1964. 4 new tires. Special gas heater. \$450. R. McNeill, Ext. 2556.

1959 FORD - Fairlane 2 door sedan, engine almost new, mechanically excel. Auto. trans. Leaving country, low price for quick sale. \$350. Thompson, Ext. 7608, 7716 after 6.

1961 VOLKSWAGEN - Very low mileage, only \$975. Ext. 423.

1961 MERCURY - Monterey, auto. trans., 4 dr. sedan. Black with red interior. Very clean car. Any reasonable offer. AT 6-9260 evenings.

1960 RENAULT - Caravelle, Black convertible with removable hard top. Perfect cond. \$1,100. SH 4-9505.

1962 KARMANN GHIA - Convertible, red with black top, 4 new tires, r/h, orig. owner going abroad. Ext. 632 or AT 9-3755.

1957 MERCURY - 4 door, auto. trans. \$250. Ext. 2432.

1953 BUICK - Roadmaster Riviera sedan. ps/pb, r/h, etc. Motor recently rebuilt, new brakes. Best reasonable offer. LT 9-2884.

1960 PONTIAC - Catalina convertible, silver gray with maroon and white interior. Auto. trans., ps, all new brakes. Very good cond. Ext. 2808.

1960 FALCON - 2 door sedan, r/h, 4 brand new w/w tires, good cond. \$550. D. Meany, Ext. 2410 or GR 5-2354.

1961 FORD FALCON - Excel. cond, clean, new tires, new exhaust system, owner needs money for a trip home. Sehgal, Ext. 2741.

1957 FORD - Station wagon, 2 door, r/h, auto. trans., V8, good transportation. \$295. W. Goebel, Ext. 322 or HR 2-1289.

1962 VOLKSWAGEN - Black, r/h, w/w's, good cond. \$1,200. M. Flom, Ext. 2741.

1958 CHEVROLET - Station wagon, 2 tone blue, manual shift, good tires, good cond. \$350. C. Clark, Ext. 2309.

1957 CHEVROLET - All white convertible V8, std. trans., leather top. 37,000 miles on 1959 engine. \$450. R. Slade, Ext. 667, or LT 9-1341 after 5:45.

1962 CHEVROLET CORVAIR - 95 rampside pickup truck, heater, 2 new tires, new brakes, battery, 20,000 orig. mi. Ideal for loading heavy items on side ramp. R. Kerzner, MO 5-8137.

1964 CHEVROLET - Impala Super Sport, white with red interior, bucket seats ps/pb, r/h, w/w's, asking \$2,750. J. Kreh, Ext. 2278 or MA 9-4929 after 6.

1963 YAMAHA - (The aristocrat of Japanese motorcycles). 125 cc., 1900 miles, better than 100 mpg. Like new. End of summer price: \$300. Palmedo, Ext. 439.

27' CHRIS CRAFT - 1952, super cruiser motor 145 hp completely rebuilt. New inside layout. Double planked bottom, sleeps 4, enclosed head, fiberglass icebox, stainless sink, bottle gas stove, Ext. 7677 or 7684 or AT 6-0691.

16' BOAT - Dargel, molded plywood, 30 hp electric Johnson, navy top, etc. \$400. Frank, Ext. 451.

10' ROWBOAT - Plywood, fiberglassed seams, oars & locks. Frank, Ext. 2152 or WA 9-6004.

25' SKIFF - 1960 hardtop, 177 hp Chrysler, 2 bunks, head. Tom, Ext. 2474.

24' SEA SKIFF - Chris Craft, 1963. Fully equipped, sleeps 2. 210 hp V8 Chris Craft engine. 55 hours on engine. Immaculate cond. Asking \$5,000. SE 2-3296 after 6.

17' RUNABOUT - Crosby 1960. Fiberglass, 40 hp Johnson electric, 1962. Cox trailer, used six times. \$850. W. Johnson, Ext. 482.

29' TRUNK CABIN SKIFF - 1961, powered by 185 hp Interceptor V8, low engine hours. Sleeps 4. Full stainless galley, dinette, full head, curtains, etc. Extras incl. ship to shore, depth sounder, built in fish wells, game fishing chair, full cockpit canvas. Boat in water, in better shape than new. \$4,600. Ext. 591 or LT 9-5755.

14' SLOOP - Still plenty of good sailing weather for this light, fast sloop. New jib this season. \$300 firm. Also U.S. Navy 7 man life raft in good cond., \$25. Winchester Model 92 converted to .357 mag. in good cond., \$65. P. Hichborn, Ext. 698.

19'8" OUTBOARD - 1959 Barbour, 1961 Johnson 75 hp outboard, elec. start, navy top, full storm cover, lights, compass & anchor plus 1962 Hale & Hardy trailer. \$1,650. GR 5-2407 after 5.

21' CABIN CRUISER - Owens. Galley, head, sleeps 3 on foam rubber, 66 hp Flagship in-board engine, navy top, anchor & line, etc. In water \$1,300. Ext. 2488, AT 6-0294 after 6.

HOUSE - 3 bedroom split-level in Smithtown. Fully landscaped, near schools, all household appliances incl. \$19,000. Ext. 455.

HOUSE - 4 room ranch in Mastic on 120x100' lot with oil hot water heat, ¾ basement. \$10,000. 281-7072.

HOUSE - Small, perfect for retirement home. One bedroom, bath, sun porch, storms & screens, garage, fenced plot 60x100. Mastic Beach near water. \$6,800. M. Perrier, Ext. 639 or 878-1719.

HOUSE - 3 bedroom "L" shaped ranch in Centereach, corner plot, walking distance from schools, 1 mile from shopping center, 16 miles from Lab. Assume mortgage & \$450. Sisson, Ext. 7677.

HOUSE - 4 bedroom ranch in Mastic with 2 baths, living room, dining room, enclosed porch, util. room, full cellar, garage, washer, dryer, refr. & stove, alum. storms & screens throughout. 10 min. from Lab. Excel. cond. \$17,500. Ext. 574 or 281-9411 after 5.

HOUSE - 4 bedroom Cape Cod on 75x125 landscaped lot in Sayville. Garage, patio, blinds, w/w carpeting, alum. storms & screens, stove & washer. Adjoining lot available if more land wanted. \$15,000. LT 9-3003.

HOUSE - ¾ acre, Suassa Park area, Port Jefferson. 3 bedroom ranch, living room with fireplace, dining room, kitchen, 2 full baths, 2 car garage, mid twenties. Owner leaving Lab. HR 3-3822.

STROLLER - Gendron Canadian made, 1 yr. old. Fringed surrey top, package basket, reclining seat & foot rest. Navy blue & white. Only \$10. R. Dietz, Ext. 623.

ELECTRIC MOTORS - Two, ½ hp and ½ hp. Also modern birdcage. Ext. 7677, 7684, or AT 6-0691.

STEEL SHED - 6 weeks old, 6'x6'x6½' high assembled. \$60. Sisson, Ext. 7677.

SHOTGUN - 12 gauge Stevens pump in very good cond. \$40. F. German, Ext. 2151.

DINING ROOM SET - Cordovan, table 36x72" open. 6' credenza with 8 lg. drawers, sliding glass door top. Chairs, table pads. \$200. Kay, Ext. 322 or AT 6-8957 after 5:30.

FREEZER - United model 180U. G. Munoz, Ext. 7637 or SE 2-6647.

ENGINE - 361 Chrysler "B" engine, bellhousing & stick transmission, plus chrome goodies. \$200. EM 3-6121 after 6.

MISCELLANEOUS - Caloril oil burner, RA-117A stack control, vent upper limit control, old time bathroom set - 3 units, John Wood glass lined gas hot water heater. Best offer. G. Kiriokos, Ext. 422 or SE 2-3623.

CAMERA - Polaroid Land Model 80, complete with flash & leather carrying case. Excel. cond. Originally \$110. Best offer over \$35. R. Dietz, Ext. 623.

MILITARY MACAW - Red & green, about 2 yrs. old. Tame but untrained. Regularly \$250 to \$500. Asking \$180. Sisson, Ext. 7677.

CONCERT GUITAR - Hopf, good cond., with carrying case. Reasonable. K. Snemyr, JU 4-8452.

RACING CAR SET - Aurora 500, 4 cars, track, railing and controls. Cond. almost like new. Orig. cost \$30. Sell for \$20. D. Engelberg, Ext. 2735.

MISCELLANEOUS - Playpen, \$8. Crib & Mattress, \$15. High chair, \$6. Exacta camera VIIA and light meter, \$75. Baby carriage (car bed), \$15. Cooler (new), \$9. Unfinished mahogany folding door 30"x80" (unused, in box), \$35. Colliers encyclopedia, \$25. AT 9-2146.

HAM STATION & TEST EQUIPMENT - Complete SSB-AM-CW, Heath HX-10 less than year old, SWR meter, Matchbox, dummy antenna, receiver GPR-90, GSB-1 SSB slicer in very good cond., Vobro bug, all cables & manuals. Heath RF sig gen., capacitor checker-Inductance Bridge, and all spare parts, tubes, etc. All incl. \$675. P. Warner, Ext. 425 from 4 to 12 or RA 8-0273 days.

MISCELLANEOUS - Furniture, washer, dryer, TV, piano, 1962 Volkswagen (sun roof, radio). Ext. 2727 or 281-6090.

SOLUTION TO CHESS PROBLEM

- | | |
|--------------------------------|-----------------------------|
| 1. N-K8 | 1. K-N3. The threat was |
| 2. N-K7 check | 2. K-N3 |
| 3. B-B5 mate, or if | 1. P-B4 |
| 2. BxP followed by | |
| 3. N-K7 mate. So | |
| 2. P-R5 check | 2. RxP |
| 3. P-B5 | 3. RxP |
| 4. P-N4 intending to mate with | |
| 5. BxR | |
| 5. B-B5 check | 4. R-B4 |
| 6. N-N7 a good move | 5. RxB |
| 7. PxR is mate. | 6. Either Rook can move for |

RECORD PLAYER - Garrard, new stylus, \$20. Ext. 301-45.

GO-CART - Yardman with 2½ hp Briggs & Stratton engine, \$50. Ext. 2536.

MISCELLANEOUS - Luggage, 2 pcs., \$7 & \$15. Rug 5x7, biege wool, \$8. Rug 8x10 American oriental, \$45. Mahogany end tables (pair), \$8. Walnut cocktail table, \$20. Walnut piecrust table, \$20. Lamps & shades, \$7. Ext. 2912.

MONORAL HI-FI - Set consists of Garrard 4 speed turntable, Heathkit preamp, Accrosound amplifier, Bogan AM/FM tuner & electrovoice dual speaker in mahogany stained cabinet. Easily adapted to stereo by addition of a preamp channel & amplifier. Best offer over \$200. M. Hilgemeier, Ext. 2531.

WINDOW - Basement type, projects in. Steel 18½"x33½" used. Glazed, screen & storm sash. Ext. 2325.

15' TRAVEL TRAILER - 1963 Serro Scotty, gas refrigerator, 3 burner gas range with oven, gas floor furnace, elec. brakes, gas & electric lights, head with hold up tank, spare wheel & tire. Excel. cond. F. Gillespie, Ext. 2389 or AT 6-0589 after 6.

FURNITURE - 24" Philco TV, blonde oak console, \$75. 46" mahogany breakfront with built-in desk, \$35. 29" mahogany corner lamp table, \$15. Twin fireside upholstered chairs, \$15 each. Mahogany console table, \$10. All in good cond. GR 5-1232.

CRIB - White provincial and carriage. Excel. cond. \$60. HR 3-1813.

21" TV - Magnavox console, \$55. M. Rothbart, Ext. 2718 or 2830.

DUAL MUFFLER SYSTEM - For Corvair. Glas-pac mufflers & header pipes, never used. \$20. Don, Ext. 2516.

RADIO-PHONO CONSOLE - Imported Braun modern design. Complete with all electronics. Real bargain, \$30. Ext. 2943 or AN 5-4925.

STEREO - Portable Voice-of-Music, separate speakers, never used. List \$70, price \$50. HR 2-0982.

TOY POODLES - AKC registration, Russo, Ext. 639.

RANGE - G.E. 2 oven, in excel. cond. \$35. AT 6-1227.

TRUMPET - Conn Constellation "B". Has large bell & trigger slide on third valve. For owner who appreciates good tone. \$125. Ext. 2527 or 751-0226.

HOT AIR FURNACE - Gravity fed, oil fired, all controls & burner, 5 ducts. Excel. running cond. D. Franck, Ext. 2458.

16" TV - Westinghouse, \$25. C. Clark, Ext. 2309.

301 CHEVROLET ENGINE - Price \$250. R. Ostrum, Ext. 2304 or 281-7665.

ADDING MACHINE - Burroughs, Hand operated-up to 99,999.99. Excell. cond. \$35. Call Lloyd Ext. 2196

FM TUNER - Lafayette 650. New. \$25. Ext. 2943 or AN 5-4925.

FURNITURE - Four matched mahogany leather top tables, excel. cond., \$80. Also painted furniture: combined bookcase, headboard, desk, nighttable, chair. All in good cond. \$30. GR 5-8658.

CAMERA - 8mm movie camera, Bauer, 88D, 3 Fl.9 lenses on push button turret with indiv. viewers, semi-automatic light meter coupling. Excel. cond. with case, 3 haze filters & 3 filters for indoor color film. Orig. \$350. Will sell for \$130. Ext. 7794 or AT 9-0931 evenings.

WANTED

BABYSITTER - Woman with own transportation for a permanent job of caring for two children in my home in Brookhaven area. 8:00 to 5:30. M. Williamson, Ext. 2812.

PLAY PEN - Small & collapsible. K. Fuchel, Ext. 2446.

BLENDER - Waring (or other make) in good cond. Reasonable. Hull, Ext. 595 or 7141, or SH 4-5969.

GUITAR - Steel stringed "folk" guitar at moderate price. C. Hull, Ext. 7141 or Page.

WHEELS - Two for 1961 Comet, Size 60013. Ext. 2531.

RIDE - Want to form or join carpool to Hofstra University Tuesday/Thursday 6:15 class. M. Hilgemeier, Ext. 2531.

TRACK - Used HO gauge track, switches, & accessories. D. Engelberg, Ext. 2735.

HOUSE - Unfurnished or partly furnished 3 (or possibly 2) bedroom house in Bellport, Brookhaven, or East Patchogue areas. S. James, Ext. 7795 or 2803.

CARPOOLS

RIDE - Wanted from Oakdale. C. Wiesner, Ext. 2105.

DRIVER - Wanted to complete existing carpool from Babylon area. B. Crockett or G. Meinken, Ext. 2200.

DRIVERS - 2 wanted for existing carpool from Port Jefferson Station area. D. Schroeder, Ext. 2357.

DRIVER - Wanted to join existing carpool from Valley Stream, New Bridge Road area, Southern State Parkway. A. Marino, Ext. 2573.

DRIVER - Wanted to complete existing carpool from Queens via Long Island Expressway. N. Reiss, Ext. 2569.

DRIVERS - 2 to complete existing carpool from Patchogue. Bob, Ext. 2265.

DRIVER - Wishes to form or join carpool from Wading River. P. Parker, Ext. 7743.

FOR RENT

APARTMENT - Unfurnished, in Setauket. 2 bedrooms, bath, kitchen, living room, private entrance. \$125 per month incl. utilities. 941-4186.

HOUSE - In E. Patchogue. 6 rooms, 3 bedrms, 1 story, big kitchen, 100'x150' in South Country Shores. \$145 per month. GR 5-7217.

HOUSE - In Miller Place. Completely furnished, 2 bedrooms, large garden, near private beach, lease for 6 months or more. Ext. 2894 or SH 4-5850 after 5.

APARTMENT - Unfurnished 5 rooms & bath with garage. \$110 per month incl. heat. YA 4-6152 after 5.

HOUSE - Small in Rocky Point. 2 bedrooms. 2 year lease. Private community & beach. \$85 per month plus utilities. Dunning. SE 2-8221.

LOST

GOLD CHARM BRACELET - No idea where. C. Balling, Ext. 694.