

the Bulletin Board

VOLUME 17, NUMBER 51

Published by the BNL Personnel Office

SEPTEMBER 29, 1964

BERA FILM SERIES

ECLIPSE



Thursday, Oct. 1 - Lecture Hall - 8:30 p.m.

"Eclipse" is the third part of what Antonioni has proclaimed a trilogy and, like its predecessors ("L'Avventura" and "La Notte"), it deals with the subject of love and man's inability to communicate. More than its predecessors, it has met with a divided audience, and the interpretations of the film are almost as numerous as the critics. Yet there is little doubt it illustrates an even more advanced command of rhythm and texture by its director.

Briefly, the story concerns a girl (Monica Vitti) who suddenly runs out on her lover of four years (Francisco Rabal). After some anguish she meets another man (Alain Delon) with whom she has little in common, yet they are drawn to each other and fall in love. That's about all there is to the story and, indeed, the play is not the thing. Style, timing, composition and a myriad of intangibles combine to create a mood and tell the sensitive and elusive story Antonioni himself wants to communicate.

The final seven minutes have aroused even greater controversy: they form a montage sequence in which the principal characters do not appear - almost a film in itself - using a series of shots of people and inanimate objects that are associated with what has gone before.

"Antonioni is so selective and sensitive with his use of the camera, so deft in catching intonations of emotional flux and flow in the graphic relations of individuals to the vividly passing scene, that what might be slow and tedious as a cinematic style actually turns out quite fascinating in his skillful command of it."

— Bosley Crowther, New York Times
(continued on page 3)

ARTHUR MURRAY DANCE CLASS

Demonstration and class organization will be held on Wednesday, October 14, at 8:30 p.m. in the Recreation Building.

Two instructors from the Arthur Murray Studio will be on hand to acquaint you with the latest dance steps, to answer your dancing questions and to sign you up for a ten-week course of instruction. So, if you'd like to learn how to dance, this is the time.

The fee for the course will be \$15 per person. Lessons will be held each Wednesday, 8:30 p.m., at the Recreation Building (Apartment Area). Each session will last at least one hour.

Bring your wife, husband, boy or girl friend, or come alone and partners will be arranged.

If the size of the class warrants, it will be split up into two sessions beginning at 7:30 p.m. and 9:00 p.m.

CAFETERIA SPECIAL

Thursday, October 1

LOBSTER
French Fries
Cole Slaw
Celery & Olives
Cream Pie
Beverage
\$1.75

YOUR DANCE

It's about that time again! The questions are being asked - Who's presenting the next B.E.R.A. dance? Why don't we have one in November? What do you have to do to present a dance?

As you know, to have a dance we must have a committee. We've found over the past few years that committees are at their best when their members are from the same group or department. Committees who are now on B.E.R.A.'s "Dance Honor Roll" include: The Bubble Chamber, Supply and Materiel, Medical, Instrumentation, and the Physics Design Group.

Presenting a dance is not as difficult as you might imagine. The budget is already allocated, and the necessary equipment and facilities are available. The chief committee concern is setting up and decorating the Gymnasium.

If your group would like to be next or you'd like a few more details, call George Sabine, Recreation Office, Ext. 391.

BROOKHAVEN CENTER HOURS

From October 3 through May, the Brookhaven Center will be open from 5:00 p.m. until midnight, Sunday through Friday. It will be closed on Saturdays.

The Center serves dinner until 10:00 p.m. Sandwiches and beverages are available until 11:30 p.m. Charges incurred at the Center in the evening are to be paid at the time they are made.

FREE TRANSPORTATION TO PATCHOGUE

By calling Ext. 585 on Mondays or Thursdays, on-site residents may request transportation to Patchogue for shopping on Tuesdays or Fridays. The car will depart from the school bus shelter in the Apartment Area at 9:00 a.m. and will leave Patchogue at noon for the return trip.

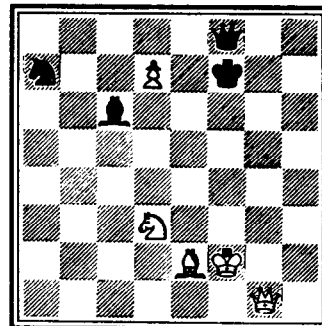
The summer bus schedule to Patchogue and Smith Point Beach is of course no longer in effect.

COOKING EXCHANGE GROUP

The first meeting of the Cooking Exchange Group will be held on Wednesday, October 7, from 3 to 5 p.m. in the Recreation Building. All who are interested, on and off site, will be most welcome. Demonstrations will be given by our old reliables, Ragnhild Ostman, "Djavulens Oga" (Devil's Eye), and Joy Johnson, Special California Salad. Baby sitting services will be available at \$.50 per mother. For further information, contact Joy Johnson at SH 4-5378, or Norma Chernick, GR 5-0167.

CHESS PROBLEM

This week's problem, composed by A.S. Seletsky, took first prize in 1933. It is White's move and win, with an excellent illustration of a smothered mate.



RIFLE & PISTOL CLUB

Rifleman, get your shooting irons ready! The Rifle Club fall tournament starts next Sunday, October 4. Matches will be held on Sunday afternoons beginning at 1:30 p.m. on the North Tract Range. Any calibre rifle may be used. The course will be forty shots, slow fire, at one hundred yards. Come promptly at 1:30 to zero in your rifles, because the competition begins at 2:00 p.m.

Non-members are also invited to join the gun club and participate in the tournament in order to get ready for the hunting season. For information, call John Jacobs, Ext. 2958.

Don't forget the club meeting on Thursday, October 1, at 8:00 p.m. in the Apartment Area Recreation Hall. Final plans for the outdoor tournament will be discussed.

Arrivals and Departures

WELCOME TO BNL

| | |
|---------------------|----------|
| BIOLOGY | |
| Mary E. Kirtley | Ext. 373 |
| NUCLEAR ENGINEERING | |
| Peter D. Adams | 2217 |
| Peter W. Kendall | 2217 |
| PHYSICS | |
| Edward D. Platner | 2836 |
| REACTOR | |
| Karl F. Filman | 2257 |

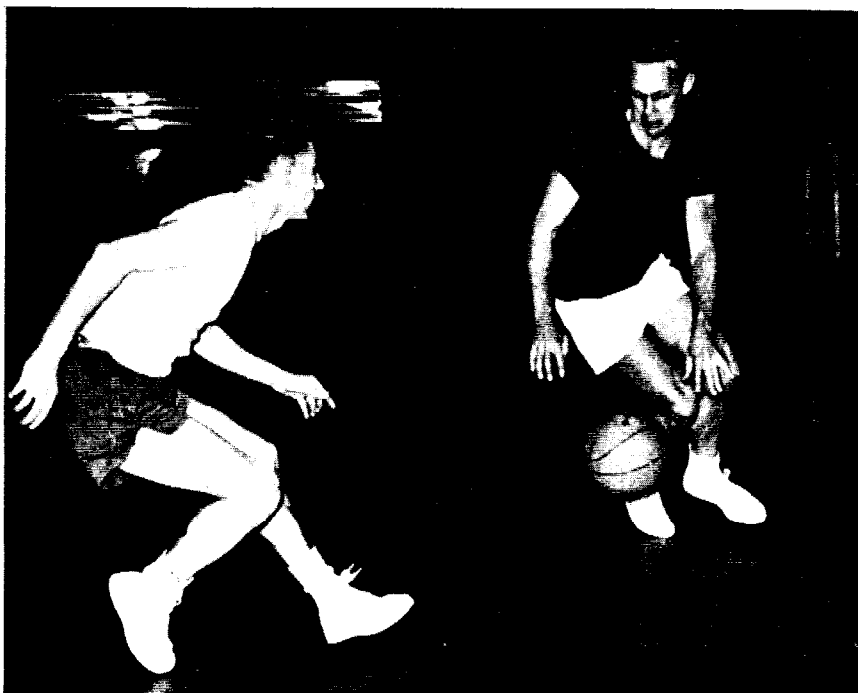
RECENT DEPARTURES

| | |
|--------------------------|--|
| APPLIED MATHEMATICS | |
| Esther S. Daw | |
| COSMOTRON | |
| William T. Chu | |
| MECHANICAL ENGINEERING | |
| Joseph M. O'Donnell, Jr. | |
| PERSONNEL | |
| Helen L. Bianchi | |
| PHYSICS | |
| Colin D. Clark | |
| PLANT MAINTENANCE | |
| Mary Ann Roberts | |
| Gertrude A. Rosato | |
| Walter L. Zielenski, Jr. | |
| REACTOR | |
| Edward J. Loeser | |

SOLUTION TO CHESS PROBLEM

- | | |
|--|---------------|
| 1. Q-N5 | 1. K-K3 Check |
| If Black had played BxP, N-B4 followed by B-R5 Check wins. | |
| 2. K-N1 | 2. KxP |
| 3. N-B5 Check | 3. K-B1 |
| King to Queen three is also possible, but 4. Q-N3 Check, K-Q4; 5. B-B4 Check; KxB; and 6. Q-N3 Check wins the Queen... | |
| 4. B-R6 Check | 4. K-N1 |
| 5. Q-N3 Check | 5. K-R1 |
| 6. B-N7 Check | 6. BxB |
| 7. N-Q7 | 7. Q-Q1 |
| 8. Q-N8 Check | 8. QxQ |
| 9. N-N6 Mate | |

SLO-BREAK BASKETBALL



It's time for your department to think about entering a team in the B.N.L. basketball leagues, now being formed. Plans are to start the season in early November.

Entry blanks are now available at the Recreation Office, 3 Center Street. Entries must be accompanied by the team entry fee of \$30 and submitted by October 23. Entry fees will be adjusted at a later date depending on the number of participating teams. Don't wait and be disappointed - all it takes is seven men to enter a team. Last season, nine teams competed in a fifteen-week season with games at 7:00 p.m. and 8:15 p.m. on Tuesday and Thursday evenings. This season we're hoping for at least ten entries. With the additional team, the possibility exists of separating teams into strong and "less-strong" leagues so that the competition will be evened out. Announcements of captains' meetings will be made shortly.

For additional information call the Recreation Office, Ext. 391, or the League chairman, George Latham, Ext. 363.

If your department is not planning a team, call the Recreation Office and your name will be put in a players' pool and distributed to the team captains.

PERSONNEL SERVICES

Recreation Office — 3 Center Street
Daily 9:00 a.m. — 1:00 p.m.

MICROMET - A limited quantity of crystals and a few feeders are still available for purchase.

EXERCISE BOOKS - Now's the time! R.C.A.F. Exercise Manuals - \$1. President's Council "Adult Physical Fitness" pamphlets - \$.35.

FOLK DANCING

The Brookhaven Folk Dancing Group will resume its winter schedule of folk dancing on Monday, October 5. Folk dancing programs will be held regularly on the **first** and **third** Mondays of each month from 8:00 to 11:00 p.m. in the Recreation Hall. Interested individuals with all levels of experience are invited to participate.

KEYEYS WIN MIXED DOUBLES CROWN

It's official now - all our 1964 tennis competition is finally completed. The action in our mixed doubles event was delayed by mutual agreement so that the Keyeys could enjoy their European trip. Upon their return they took on past champions Walt Merkle and Helen Connell on Thursday, September 17.

The winners took the first set by the close margin of 9-7. The second set of this ill-fated competition was deadlocked at 6-6 when darkness forced another postponement.

The third portion of our tennis serial took place last Tuesday in spite of "Gladys." The Keyeys lost the first two games and second set 6-8 but managed to rally in the deciding set (7-5) to take B.E.R.A.'s 1964 championship trophies.

ECLIPSE - continued

"The final sequence is masterful. With a few stark strokes Antonioni puts a diffuse and apparently senseless picture in a frame, in a black border of mortality that instantly reveals its perspective and its significance as a spiritual admonition . . . What's more, the frame reveals the picture as an extraordinary effort of style, as a definitive treatment of the themes Antonioni developed in "L'Avventura" and "La Notte."

— TIME

"The closing sequence . . . has been called by some the ultimate bankruptcy of Antonioni's style. By others it has been seen as his statement that man must come to terms with his new environment before he can love . . . To me it is simply a sounding-board against which the story, now ended, resonates for a while, as a pedal may hold the closing notes of a piano piece. The drama, as such, is finished but Antonioni doesn't want the film to finish yet, he wants us to linger in the specifics of the film's world and to let the story echo. It is quite simple and quite daring, and it is not a trick."

— Stanley Kauffmann,
THE NEW REPUBLIC

SEPARATE TABLES

The B.N.L. Theater Group is just getting under way with its fall production, "Separate Tables," by Terence Rattigan. This play is well remembered from its critically acclaimed Broadway run in 1955-56. The 1958 film version won an Academy Award for Wendy Hiller as the lonely innkeeper and both an Oscar and the New York Film Critic's Award for David Niven as the retired Major with a shady past.

Rehearsals for the present production have already begun. Of course, there are still many positions to be filled on the production staff. If you have the time and would like some excellent recreation, contact the show's producer, Mary Kinsley, Ext. 2821, for any or all of these assignments.

We are aiming for production on November 19, 20, and 21. Remember to keep these dates open and plan on attending one of the performances. You will be rewarded with a stimulating and worthwhile theater experience.

WATCH FOR

Swimming Pool Reopening - Mid-Oct.

B.E.R.A. Dance - Nov. (maybe)

Juilliard Quartet - Nov. 17

"Separate Tables" - Nov. 19, 20, 21

LOST

SAFETY GLASSES - P. Townsend, Ext. 2309.

CLASSIFIED ADS**FOR SALE**

1962 MGA - MKII Roadster, black w/red interior, disc wheels. Clean, 32,000 miles, one owner, extras. \$1500, call Ext. 2332.

1956 CHRYSLER - Windsor 4 door, pb/ps, r/h, best offer over \$400. J. Hallock, Ext. 2480 or 878-0222 after 6.

1957 FORD - Fairlane 500, T-Bird engine, auto. trans. r/h, brakes relined, new muffler, tail pipe, fuel pump. Very good cond. \$300. Available Oct. 12. Ostman, Ext. 7733.

1955 PONTIAC - Station wagon with radio, extra snow tires. Transportation for \$100. W. Love, Ext. 7647 or GR 5-8321.

1957 FORD - V8, 2 door hardtop, with auto. trans., r/h. Lou, Ext. 2326 or 878-0743.

1958 RENAULT DAUPHINE - Runs well & will serve faithfully as a second car. Sun roof, radio, seat belts, good tires & battery. Asking \$100. Ext. 2924 or AT 6-0428.

1961 CHEVROLET - Impala convertible, r/h, auto. trans., V8, full power. Sacrifice. Can be seen Fri., Sat., Sun. AT 6-9199 or AT 6-0177.

1956 CADILLAC - 4 dr., series 62, very good overall cond., rebuilt trans., new tires, battery, fuel pump & ignition wires, recent tune-up & front end alignment. \$500. C. Hamill, Ext. 2390 or AN 5-3934.

1957 FORD - Good for rear parts. \$8. Russo, Ext. 639 or SE 2-3338.

1958 JAGUAR - Coupe. 878-0071 after 6.

1960 CORVAIR - 700 coupe, new brakes & shocks. Radio & gas heater. \$850. G. Schluntz, Ext. 2314.

1963 VOLKSWAGEN - Blue, w/w's & white leather seats. Showroom cond. Sacrifice. G. Mansfield, Ext. 2857 or 281-7394.

1951 CHEVROLET PICK-UP - ½ ton, good running cond. \$200. AT 6-8712 after 5.

1963 OLDSMOBILE F-85 - Cutlass, white with red interior, ps, w/w's, V8, auto. trans., r/h, like new. Must sell, \$2,100. GR 5-7217.

1957 FORD - Hard top, excel. mech. cond., good dependable transportation. A real buy at \$250. GR 5-3803 after 6.

1958 OLDSMOBILE - "98" 2 door hardtop, white with black top, exceptionally clean, auto. trans., full power. \$695. Ext. 2708 or YA 4-3581 after 5.

1954 CHEVROLET - \$103. AT 6-8712 after 5.

1960 WILLYS - Station wagon, 4 wheel drive, r/h. 820 tires. GR 5-2043.

1957 RAMBLER - 6 cyl., std. trans., overdrive, good cond. New tires, fuel pump, clean interior. Owner leaving for Europe. Available Oct. 13. \$275. J. Yoccoz, Ext. 2837 or 532 (after 5:30) (between Oct. 4 and Oct. 13).

1957 RAMBLER - Station wagon, 4 door, 6 cyl., auto. trans., r/h, good rubber, excel. cond. \$375. YA 4-3522.

1953 BUICK - Roadmaster. FREE - with purchase of rebuilt motor for \$100 (or better offer). Drive it away, keep driving for years. No charge for r/h, power controls, etc. Ext. 2325.

1953 FORD - Customline, 4 door sedan, 8 cyl., std. trans., flat top engine acclaimed by mechanics as the BEST engine Ford ever made, r/h, excel. mech. cond. Best offer over \$75. Available beginning of Nov. M. Danzig, Ext. 7662.

1958 PLYMOUTH - 4 door, power steering, new trans., excel. cond. \$400. C. Bartlett, Ext. 2811.

1958 CHEVROLET - Station wagon, 6 cyl., std. trans., good tires, good cond. 2 tone blue. \$325. P. Townsend, Ext. 2309.

1956 CHEVROLET - R/h, rebuilt engine, body good, auto trans. \$200. GR 5-2043.

1957 CHEVROLET - V8, 4 door, runs well, body clean. \$250 firm. Ext. 7793 days or evenings, before Friday.

1957 FORD - Country sedan, station wagon, new tires, front end adjusted & all wheels balanced. New tail pipe & lifetime muffler. Runs well. Priced for quick sale. A. Rosenka, Ext. 445 or YA 4-3553.

8' DINGHY - With oars, \$40. Also 100 lb. mushroom anchor, \$35. Ext. 2210.

20' CRUISER - Trojan, 60 hp Gray inboard, full canvas, head & galley, sleeps 2, in water. AT 9-1228 after 6.

38' NOVA SCOTIA - Fully equipped. \$1,500. AT 9-1003.

27' BOAT - Scott McBrady custom built. Needs work. Make offer under \$500. Best offer takes it. AT 9-1003 after 6.

22' SEA SKIFF - Verity, Lapstreak, shelter cabin, 109 Gray Marine engine, 4 whl. trailer incl., extras, \$695. Bob, Ext. 2201 or LT 9-2737.

SAILBOAT - Blue Jay, built in 1958, in water only 3 summers. Used very little, good racing record. Excel. cond. Fuller, Ext. 2363 or AT 6-0747 after 6.

ROWBOAT - Marine plywood construction. Fiberglassed. Ext. 423.

HOUSE - Beautiful 7 room house in Wading River with 2 baths, lovely park-like grounds, private road to park with stairs to beach (2 min. walk). House has submergible pump. \$20,000. E. Mignani, WA 9-4434.

HOUSE - High ranch in Bellport near schools. 2 years old, 3 bedrooms, lg. family room, 2 car garage, built-in range, oven, dish wash., w/w carpeting, drapes, patio, beautiful corner plot, fully landscaped. Sacrifice. \$20,000. AT 6-0764.

HOUSE - Small, attractive house in East Setauket. 3 bedrooms, 1 bath, lg. kitchen, lg. living room with fireplace, expansion attic, excel. location. Principals only, firm price \$18,700. Phone for appointment, Ext. 2208 or 941-4257 evenings.

HOUSE - 5 year old split level. 4 bedrooms, garage, 1 ½ baths, storms & screens, w/w carpet. \$13,800. HR 3-0288.

HOUSE - ½ acre, Suassa Park area, Port Jefferson. 3 bedroom ranch, living room with fireplace, dining room, kitchen, 2 full baths, 2 car garage, mid twenties. Owner leaving Lab. HR 3-3822.

EXAKTA VXIIA - With Biotar 1.2 lens and Schneider 3.5/135 telephoto lens. Case incl., excel. cond. Best offer over \$190. F. Barnes, Ext. 488.

TIRE - Mounted, 820x15, one. \$5. Ext. 622.

MOTOR - Small outboard. Ext. 423.

FURNACE - Chrysler air-temp forced warm air furnace, high-boy style, compl. with burner & all controls, 80,000 BTU's. Big enough for 5-room house. \$150. Watson, WA 9-4413 after 6.

FURNITURE - Early American. 1 compl. bedroom, 2 bunk bed, 1 crib, 1 living room, 1 dinette with 4 chairs, 1 folding bed, 1 desk, 2 night tables. All in good cond. Only 1½ years old. Ext. 2893 or SE 2-3021.

DIAMOND RINGS - 0.5 carat perfect marquise diamond with matching band set with 2 baguette diamonds. Alex, Ext. 2877.

REFRIGERATOR - G.E., good cond. \$15. Hank, Ext. 601.

OAK TABLES - 5 blonde modern solid oak tables, 3 end, 1 lamp, 1 coffee, plate glass tops, excel. cond. All, \$50. YA 4-3906.

BEDROOM - 10 pieces (make 2) excel. cond. Double bed with Englander mattress & box spring, dresser with mirror, chest, vanity with bench & mirror, 2 nite tables, and chair. Orig. cost \$1,000. \$200. M. Alvarez, Ext. 388.

MISCELLANEOUS - Winchester Model 12 shotgun, 12 gauge, modified choke, 28" barrel. List \$108, \$65 firm. Surf rod, 11½" Super-Cutter, Luxor reel with 15 lb. mono test line, \$45 firm. Pickett 5" slide rule & case, \$7. Starrett 6" vernier caliper & case, \$25. B&S 1" mic (.0001), \$10. B&S jewelled indicator & case, \$18 firm. All in excel. cond. J. Ferrer, Ext. 7687 or 878-0792.

DINING ROOM FURNITURE - Table, 6 chairs, 3 additional pieces. \$50. Ext. 2716.

TIRE - New 560x12 w/w, \$15. A. Minardi, Ext. 2708 or YA 4-3581 evenings.

ROTO BROIL - Fleetwood 500, \$35. C. Smol, Ext. 422 or 2152.

USED GOLF BALLS, - Good cond., \$1 per doz. J. Dobesh, Ext. 7782.

RUSTIC FENCE - Twenty 8' sections, two 10' sections. \$2 each. No posts. GR 5-7372 after 6 p.m.

MISCELLANEOUS - China, glasses, pots & pans, other kitchen utilities, \$20. Bathroom

scale, \$5. Iron & ironing board, \$7. Available immediately. 1962 Motorola TV, portable with stand, \$100. Available Oct. 12. Ostman, Ext. 7733 or SH 4-5542.

POODLE - 1 female miniature, black & white. \$45. Russo, Ext. 639 or SE 2-3338.

BABY CARRIAGE - In very good cond., wheels can be removed and upper part used as car bed. Ext. 7726.

VACUUM CLEANER - Hoover Constellation with attachments. Good cond., \$10. AT 9-0436.

COMPLETE MOVIE OUTFIT - 8 mm Kodak camera, 8 mm Regal K-109 Keystone projector fully equipped with viewer, splicer, and a 30"x40" tripod Screenmaster screen. \$100. Used approximately 2 hours. D. Glover, Ext. 2495 or 878-0408 evenings.

RADIO & HI-FI EQUIPMENT - G.E. clock radio, new, \$15. HFT-90 Eico FM tuner, \$30. ST-40 Eico stereo amplifier, like new, \$80. (regularly \$129.95). Archie, Ext. 2351.

MISCELLANEOUS FURNITURE - Pine desk, \$20; blond occasional table, \$3; mahogany step table, \$7; heavy wrought iron TV table, on casters, \$5; card table & 4 chairs, \$7; metal folding picnic table, \$5. Archie, Ext. 2351.

FM TUNER - With separate self-powered multiplex adaptor, \$35. Also Eico model 360 TV-FM sweep generator, \$10. R. Hildenbrand, Ext. 7777.

BABY CARRIAGE - \$5. Also beach umbrella, \$5. Ext. 532.

CAMERA - Polaroid Model 150 complete with wink light and auto. shutter, like new. \$50. Jerry, Ext. 2709.

REFRIGERATOR - G.E., 8 cu. ft., about 10 yrs. old, in excel. cond. A. Mahlmann. Ext. 2800.

FOR RENT

APARTMENT - In Patchogue, 3 rooms & bath. Unfurnished. GR 5-2084.

APARTMENT - In East Patchogue, 1 bedroom, bathroom, living room, kitchen. Furnished. Private entrance. Avail. Oct. 15. \$100 per month with utilities. AT 6-9524 after 5:30.

HOUSE - 268 Durkee Lane, East Patchogue. 25 min. from Lab. 3 bedrooms, compact living room, lg. kitchen. \$135 per month. GR 5-7217 bet. 8 a.m. & 10 p.m.

COTTAGE - In Shoreham Village. Completely furnished. Living room, 3 bedrooms, dining room, kitchen with utilities, bathroom. Few minutes walk to beach. \$130 per mo. 1 year (or longer) lease. Oil heat. Available Oct. 13. Ostman, Ext. 7733 or SH 4-5542.

HOUSE - Fully furnished, 2-3 bedrooms, living room, dining room, kitchen, bath, big sun porch, garage, garden, fully insulated, 12 min. from Lab. Lease 6 months or more. Chanana, Ext. 2894 or 2971 or 281-3294 evenings.

HOUSE - In Miller Place. Completely furnished, 2 bedrooms, big garden, near private beach, \$110 per month. Lease for 6 months or more. Ext. 2894 or SH 4-5850 after 5.

CARPOOLS

DRIVERS - 2 wanted for existing carpool from Port Jefferson Station area. D. Schroeder, Ext. 2357.

DRIVER(S) - Sought by reliable 3-man carpool from Queens-Nassau border via L.I. Expressway. K. Fuchel, Ext. 2446.

WANTED

PAIR OF CLAM TONGS - And/or "jerk" rake in usable cond. AT 6-1268 6 to 7 p.m.

SKIS & SKI BOOTS - For girl age 7. Also used 30" elec. range in good cond. E. Collins, Ext. 2812.

TRADE - \$125 Royal custom portable typewriter for your Royal Standard with elite type. J. Hallock, Ext. 2480 or 878-0222 after 6 p.m.

14' ROWBOAT - Aluminum hulled. Or runabout. In good cond. Ext. 347 or 878-1659 after 6.

HOUSE - Unfurnished or partly furnished 3 (or possibly 2) bedroom house in Bellport, Brookhaven, or East Patchogue areas. S. James. SH 4-5656.