

the Bulletin Board

VOLUME 17, NUMBER 52

Published by the BNL Personnel Office

OCTOBER 6, 1964

TO THE STAFF:

This year the President of the United States has proclaimed the week of October 4-10 as Fire Prevention Week. The theme of this year's Fire Prevention Week activity at BNL is "Know How to Report a Fire."

We are indeed fortunate here at the Laboratory to have a fine professional Fire Group to protect us 24 hours a day. However, for these firemen to protect our lives and property properly, they must be told about a fire just as soon as possible. It is the responsibility of each of us not only to prevent fires, but also to know how to report a fire quickly and efficiently.

During this week, you will hear much about how to report a fire. As you listen and read, remember one important point: Many fires start small - large losses occur from these fires because of slow or poor reporting of the fires to the responsible fire fighters.

M. GOLDBABER,
Director

TO THE STAFF:

We have had a very good fire record at Brookhaven during the past year. There have been no injuries resulting from fire, and only one fire occurred in which the damage was over \$50.00.

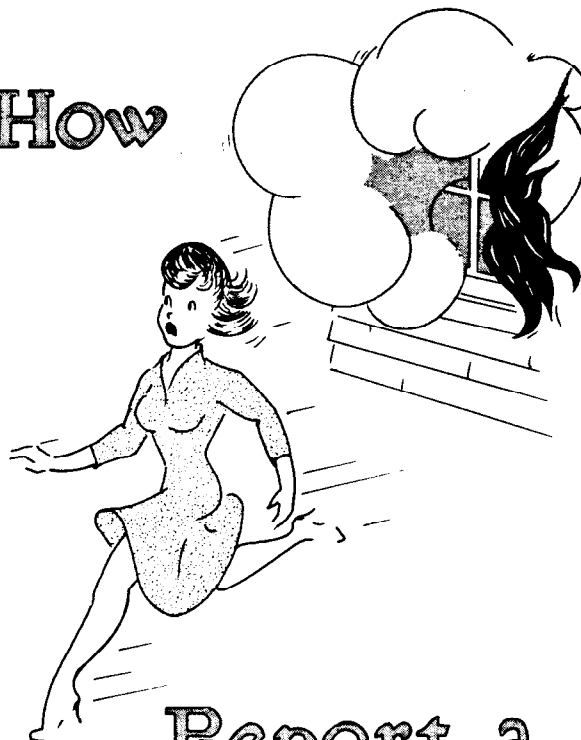
For a laboratory of our size, these are unusually fine statistics. But we mustn't let them lull us into a state of complacency. A fire can strike at any time and we must be constantly on our guard to prevent it.

We have had several minor property damage fires this year. In most, quick action by BNL employees in calling our Fire Group (ed. note: plus quick, efficient work by our firefighters) has limited the damage. In a few cases, however, there have been indications that reporting of the fire was delayed by lack of knowledge of how to report it - and only through luck was the damage kept low. For this reason, I join Fire Marshal Wisnofski in urging each of you to learn the fastest way of reporting a fire (manual pull box or telephone Ext. 313). Be sure to visit the Fire Prevention Week display in the Cafeteria and try pulling a manual box on the special board.

THOMAS NEWHAM,
Fire Chief

CALL THE FIRE DEPARTMENT!

Know How To



Report a Fire

FIRE PREVENTION WEEK - OCTOBER 4-10

But how? If you asked this question when reading the title of this article, then you'd better find out - FAST. It will be too late when you discover a fire. According to National Fire Protection Association figures, many lives are lost and many millions of dollars of property damaged because someone took too long in reporting a fire to his Fire Department.

Just how do you report a fire? At BNL, the most efficient method is to pull a manual fire alarm box. These boxes are painted red and are labeled with operating instructions. With some, you simply pull down the handle (the glass rod breaks easily). Others require opening the box and pulling an inside lever that sends the alarm. There are a few boxes where you must break a glass window, open the door, and then pull a lever. Once you have pulled a manual box, be sure someone meets the Fire Group when they arrive to tell them exactly where the fire is located and what is burning.

If your building is one of the few still not equipped with manual alarm boxes, then you must report a fire by telephone. The BNL emergency fire extension is 313. Memorize it! When reporting a fire by telephone, give the exact location (building number and location in the building) and your name. Then see that the Fire Group is met. If you are off site, dial the operator and give her the exact location (address and fire district) of the fire, the nature of the fire, and your name. Give the firemen any further information when they arrive.

Take a few minutes right now to locate the manual fire alarm box nearest you and/or to memorize the proper telephone reporting method. Also make sure your family knows how to report a fire at home. These actions today may save your life, your place of employment or your home.

ANNUAL VISITORS' DAYS

BNL's fifteenth annual Visitors' Day is scheduled for Saturday, October 24. In addition to this program, the Laboratory is holding its seventh annual College Visitors' Day on Friday, October 30. The following day, Saturday, October 31, will be the eleventh High School Visitors' Day, which will be open to tenth, eleventh and twelfth grade students interested in science.

On these three days, Brookhaven will provide tours of several of its major research facilities. Special exhibits and demonstrations will be devoted to various aspects of research in the life and physical sciences, and in engineering.

ARTHUR MURRAY DANCE CLASS

Demonstration and class organization will be held on Wednesday, October 14, at 8:30 p.m. in the Recreation Building.

Two instructors from the Arthur Murray Studio will be on hand to acquaint you with the latest dance steps, to answer your dancing questions and to sign you up for a ten-week course of instruction. So, if you'd like to learn how to dance, this is the time.

The fee for the course will be \$15 per person. Lessons will be held each Wednesday, 8:30 p.m., at the Recreation Building (Apartment Area). Each session will last at least one hour.

Bring your wife, husband, boy or girl friend, or come alone and partners will be arranged.

If the size of the class warrants, it will be split up into two sessions beginning at 7:30 p.m. and 9:00 p.m.

FREE TRANSPORTATION TO PATCHOGUE

By calling Ext. 585 on Mondays or Thursdays, on-site residents may request transportation to Patchogue for shopping on Tuesdays or Fridays. The car will depart from the school bus shelter in the Apartment Area at 9:00 a.m. and will leave Patchogue at noon for the return trip.

The summer bus schedule to Patchogue and Smith Point Beach is of course no longer in effect.

OUTING CLUB

There will be a meeting of the Outing Club on Thursday, October 8, at 8:00 p.m. in the Recreation Hall. Ralph Fairchild will give a slide-illustrated account of his recent hikes through Mt. McKinley and Olympic National Parks. A trip to Mt. Katahdin will also be discussed. Call J. Powell, Ext. 7789, for details.

SIXTH ANNUAL PEGRAM LECTURESHIP

The Laboratory's Pegrarn Lectureship Committee has announced that this year's George B. Pegrarn Lecturer will be Barbara Ward, the distinguished economist, philosopher, writer and lecturer.

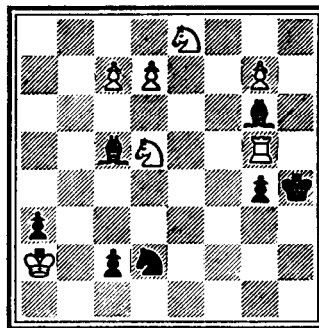
Miss Ward's lecture series is entitled "World Affairs: A Sense of Direction" and will be given as follows:

"The Balance of Power" Fri., Nov. 6
 "The Balance of Wealth" Mon., Nov. 9
 "The Balance of Ideology" Wed., Nov. 11

All lectures will be given in the Brookhaven Laboratory Theatre at 8:30 p.m. Requests for tickets, on the proper form, should be mailed as soon as possible to the Lectureship Committee.

CHESS PROBLEM

Master Korolikhov shows us a mate in this week's problem, using not less than five knights simultaneously. White to move and win. Solution elsewhere in the BULLETIN BOARD.



UPTON RIFLE TEAM

Getting off to a running start in the 1965 L.I. Industrial League season, the underdog BNL rifle team defeated the super Grumman Gopher "A" team by a score of 727 to 719. The match was a see-saw affair until the third relay, when BNL took the lead by seven points. Somewhat startled, the Gophers threw their finest shooters into the last relay in an attempt to stem the tide. To their dismay, BNL countered with Pete Fallon who, with his unusual style of shooting, guaranteed the outcome of the match. Scoring for Brookhaven were Roy Domish with a 186, Al Lukas 182, E.J. Hart 181, and Tony Finocchio 178.

IMPORTANT REMINDER!

Something interesting's cooking for

NOVEMBER 5, 1964

Watch the BULLETIN BOARD

FORTIETH BROOKHAVEN LECTURE

By: VANCE L. SAILOR

Physics Department

Title:

"Oriented Nuclei"

Lecture Hall — Wed., Oct. 14 — 8:00 p.m.

A buffet supper (\$2.75) will be served at the Brookhaven Center before the lecture, beginning at 6:00 p.m. Reservations should be made at least one day in advance by calling Ext. 2302 before 5:00 p.m. or Ext. 2453 in the evening.

Refreshments will be available in the Exhibit Hall following the lecture.

Arrivals and Departures

WELCOME TO BNL

AGS	
George W. Wheeler	Ext. 2989
BIOLOGY	
Shizuko Yagi	7170
INSTRUMENTATION & HEALTH PHYSICS	
Branko Soucek	2373
MEDICAL	
James Z. Ginos	2895
PLANT MAINTENANCE	
Harry R. Dowling	2120
PURCHASING	
John J. Lavin	2701

RECENT DEPARTURES

AGS	
Robert C. Williams	
CHEMISTRY	
Andreas A. Zavitsas	
NUCLEAR ENGINEERING	
Christopher G. Agritellis	
PHYSICS	
John A. Becker	

BERA DANCE

The date has been set! It's Friday, November 6. The Personnel Division has stepped forward and volunteered its twenty to present our next Lab-wide dance on behalf of BERA. The committee will be meeting this week to make plans and an announcement of the theme and band will be made soon.

CARELESS SMOKING

Careless smoking is a top cause of home fires, National Fire Protection Association records show.

A deadly combination is the still-burning butt lodged in an upholstered chair or sofa, smoldering and filling the house with lethal smoke and gases.

Use your ash trays, and use only ash trays that safely "fence in" your discarded smokes.

OUR NEW BOWLER

Recently a newly-formed BNL bowling team listed among its members a new recruit who had not bowled before. After his first night of competition, a sympathetic team-mate sent him a book entitled, "How to Improve Your Bowling."

This was his reply:

"Deer Jo:

Thank yew for sinding me the buk on bowling. As you no, i don't rite too gud, and i reed evin worse, so i reely don't no wot the buk sez.

And from the low skore i got the other nite, yew no my eyesite is terrible, so i don't do me no gud to look at the picktures.

i no yew shud not make excuzes, but i told the kaptain of our team that i had not bowllid in many yeers. i kind of forgot the game becus i thought the ob-jeck was to throw the bawl down the woodin platform and hav it pop into the gulley jest befor it hit them woodin sticks. As you know, the ferst 2 bawls i threw did this and wen i went back to the bench, i noticed the fellers were smilin at me so i figgered i had done reel gud. Now that i no a little mor about the game, i gess they was reely laffin at me.

I also found i had a defecktive bawl becus i discovered it had 3 holes in it. i figgered it must have got left outside and sum woodpekkers got into it. Wen i looked at my wurthy opponint to see what his bawl looked like, i reelized that we wer bawlling against a bunch of cripples becus wen he held the bawl up i cud see he had only 2 fingers and haf a thum - guess he must hav lost the other fingers in the war or maybe an akcident. It was haf an hour befor i reelized that all the bawls had 3 hols in them and that you are suppozed to stick yur fingers in the hols. i had truble for awile cuz once i get my fingers on to something i find it hard to let go.

Also, you no i like baseball - i am a reel Metz fan tho i no you like thos other fellers. Wel, when i herd someone yell "its a strike" i decided rite then that i wud be very careful and not get a strike cuz if i got 3 strikes, the fellers on the team wud not let me play any more. You kan imagine that i felt pretty gud too being i didn't get a strike until the thurd game - and then it was an akcident being my finger slipped and the bawl went straight down the plat-form and knocked every stick down. Boy, wuz my face red.

Wel, it sure wuz fun the other nite and i hope to do better next time. Jest hope i don't strike out - ha, ha."

VOLLEYBALL LEAGUE

Entry blanks for departments wishing to enter teams in volleyball league competition are now available at the Recreation Office, 3 Center Street. The season is slated to begin November 17, so round up your crew and join the fun. Games last season were played in the Gym immediately after 5:00 p.m. on Tuesday and Thursday evenings. Eight able bodies are required to field a club. Each team will be scheduled to play one match a week for a period of about fifteen weeks. Entries (accompanied by the team entry fee \$5) must be submitted by November 5.



For additional information, call the League Chairman, G. Levine, Ext. 600, or the Recreation Office, Ext. 391.

If you'd like to play but your department does not have a team, call the office and your name will be put in a player's pool for distribution to team captains.

BASKETBALL

Entry blanks for our Slo-Break Leagues are at the Recreation Office. Deadline for entries is October 23 - the season starts early in November. For additional information, call Ext. 391.

CAFETERIA SPECIAL

Thursday, October 8

Small Juice
Celery and Olives
Tossed Salad
Veal Cutlet and Spaghetti
Tapioca
Beverage
\$.99

RIFLE & PISTOL CLUB

October 4 was the first Sunday of the 1964 Fall Tournament. Matches will be held every Sunday at 2:00 p.m. sharp, for seven weeks, ending November 15. Come at 1:30 if you want to zero your rifle.

The best four scores out of seven will be used. There is still time to get into the competition and win a fine trophy. There will be several divisions, so even the beginner has a chance for a trophy.

For more information, call Robert Rasmussen, Ext. 2397, or John Jacobs, Ext. 2958.

PERSONNEL SERVICES

Recreation Office — 3 Center Street
Daily 9:00 a.m. — 1:00 p.m.

Discount Tickets — Discount coupons are now available for "Never Too Late," playing at the Playhouse Theatre in New York City. These coupons are good through October 24.

SOLUTION TO CHESS

A look at the diagram shows that Black is threatening mate with P-B8 (knight) 2 K-R1 2 knight on queen 7 to knight 6 mate so . . .

- | | |
|-----------------------------|---------|
| 1. R-R5 check | 1. KxR |
| 2. N-B4 check | 2. K-R3 |
| 3. P-N8 (knight) check | 3. K-R2 |
| 4. N (on N8) - B6 check | 4. K-R3 |
| 5. NxP check | 5. K-R2 |
| 6. N (on K8) - B6 check | 6. K-N2 |
| 7. N-K6 check | 7. K-B2 |
| 8. P-Q8 (knight) check | 8. K-K2 |
| 9. P-B8 (knight) check mate | |

FOLK SING

There is a folk sing every Wednesday night at 8:00 p.m. in the Recreation Hall. Songs and singers from all lands are welcome.

CLASSIFIED ADS

FOR SALE

1957 FORD - Fairlane 500, T-Bird engine, auto. trans., r/h, brakes relined, new muffler, tail pipe, fuel pump. Very good cond. Any reasonable offer accepted. Ostman, Ext. 7733.

1962 VOLKSWAGEN - Black sedan, r/h, w/w's, good cond., \$1,150. M. Flom, Ext. 2741.

1963 OLDSMOBILE - Cutlass F-85, white with red interior, ps, auto. trans., w/w's, r/h, bucket seats, 9000 mi. Excel. cond., best offer, must sell, taking possession of new car. GR 5-7217.

1950 CHEVROLET - Very reliable, good tires, owner leaving country. C. Zupancic, Ext. 2292.

1961 DAIMLER - SP250 convertible roadster, low mileage, V8 engine, roll-up windows, fiberglass body, jump seat, 4-wheel disc brakes. Asking \$1,500. Ext. 415.

1963 VOLKSWAGEN - Blue, w/w's & white leather seats. Showroom cond. Sacrifice. G. Mansfield, Ext. 2857 or 281-7394.

1959 VOLKSWAGON - Convertible, \$825. MacDonald, Ext. 2814.

1959 FORD - Galaxie convertible, new w/w tires, top perfect cond., T-Bird engine, excel. cond., r/h. Sacrifice, \$650. J. Whaley, HR 3-3569.

1949 PLYMOUTH - R/h, excel. cond. Must be seen. \$150. AT 6-9199 or AT 6-0177.

1958 STUDEBAKER - Scotsman, 2 door, r/h, 2 yr. old engine, new tires (tubeless w/w), trans., clutch, generator, battery. Upholstery 1 yr. old. Body in good cond. \$300. E. Tonna, Ext. 2886.

1953 PLYMOUTH - Std. trans., 4 door sedan, new paint & tires, very good running cond. \$150. H. Stemm, Ext. 567 or HR 2-0553 evenings.

1960 FALCON - Deluxe 4 door, r/h, auto. trans., new tires, padded dash & visors. Eleanor, Ext. 383.

1954 CHRYSLER - Windsor, r/h, auto. trans., pb, good tires, excel. cond. \$175. AN 5-5769.

1960 OLDSMOBILE - "Super 88," 4 dr. hardtop, auto. trans., r/h, full power, extras, excel. cond. \$1,400. Ext. 2408 or EM 3-9513 after 6.

1961 VOLKSWAGEN - Black with red interior. Very good cond. \$1,050. Mike, Ext. 613.

1962 VOLKSWAGEN - Black sedan, \$1,095. M. Caunter, Ext. 2389.

1955 METROPOLITAN - Good running cond. K. Gray, Ext. 406 or 281-3361 after 5.

1959 FIAT - 500. Good cond. \$139. 878-1482.

1963 CHEVROLET - Impala sport coupe, auto. trans., ps, r/h, seat belts, padded dash, 6 cyl. 12,000 orig miles. A black beauty. \$2,175. J. Dispart, Ext. 2389, 12-12:30. 281-8943 after 5:15.

1961 PLYMOUTH - 9 passenger wagon (Chrysler chassis), V8 engine, auto. trans., r/h, back-up lights, vacuumatic door locks, new w/w's, orig. owner, 37,700 miles. \$1,450. F. Horn, Ext. 2383, 2752, or LT 9-2759 after 6.

1961 CHEVROLET - Impala convertible, r/h, auto. trans., V8, full power. Can be seen Fri., Sat., Sun. Sacrifice. AT 6-9199 or AT 6-0177.

1963 VOLKSWAGEN - White, sun roof, excel. cond. \$1,350. U. Zahn, Ext. 625.

1953 FORD - Customline, 4 door sedan, 8 cyl., std. trans., flat top engine acclaimed by mechanics as the BEST engine Ford ever made, r/h, excel. mech. cond. Best offer over \$75. Available beginning of Nov. M. Danzig, Ext. 7662.

1958 BUICK - Special, 4 door hardtop, V8, ps/pb. P. Lieberman, Ext. 7732.

1958 VOLKSWAGEN SEDAN - Radio, exceptionally good cond., clean, 50,000 miles. Black with red leather upholstery. \$625. E. Rogers, Ext. 2554.

1954 OLDSMOBILE - Holiday coupe. All power. \$100. Becht, Ext. 671.

1957 CADILLAC - 4 door sedan, deVille. Full power (win. & seat), very clean. \$650 firm. D. Bauer, Ext. 2509.

1960 CORVAIR - Black, 4 door, r/h, \$650. K. Raab, Ext. 2578.

1963 VOLKSWAGEN - \$1,400. AT 6-0630 after 6.

1957 MERCURY - 4 door, auto. trans. \$250. Ext. 2432.

1958 CITROEN - 4 door, std. trans., new tires, lots of new parts, new points, mechanically excel., suspension system needs work, \$250. Ext. 622.

1964 VOLKSWAGEN MICROBUS - Model 241 deluxe with radio, undercoat, all windows open, side mirrors, 10 mos. old. Very good cond., VW service book, warranty in effect. \$1,950. RA 8-0273 evenings except weekends.

1955 TROJAN - Trailer & cradle incl. 70 hp Gray Marine, 2 bunks, head, lines, cushions, etc. H. Downs, Ext. 2410.

18' OUTBOARD - Cedar planked, 35 hp Johnson motor. AT 6-0779.

18' SEA SKIFF - 1960 custom built with 1959 Mercury 60 hp in very good cond. Must sacrifice. AT 6-9161 after 6.

17' RUNABOUT - Fiberglass 1960 Crosby, 1962 40 hp elec. Johnson, Cox trailer. \$795. Ext. 482.

18' OUTBOARD CRUISER - Fiberglass, 75 hp Johnson elec., 1961. Navy top & covers, 2 bunks, head, fully equipped. \$1,500. Ext. 2735 or PA 7-1199.

SAILBOAT - Blue Jay, built in 1958, in water only 3 summers. Used very little, good racing record. Excel. cond. Fuller, Ext. 2363 or AT 6-0747 after 6.

16' SAILBOAT - Snipe, good cond. \$250. Bowman, Ext. 2410 or 281-5226 after 6.

18' CATAMARAN - Glen L. Witt design, twin 40 hp Evinrudes, elec. starters, tachometers, speedometer, navy top, built-in gas tanks, fully Coast Guard equipped, new 12 volt battery, 2 extra propellers. Holsclaw trailer with hydraulic brakes, spare tire & wheel. Must sell immediately. E. Thompson, Ext. 2714 or AT 6-8734.

SKI LODGE - And acreage. 57 acres in Massachusetts, 3 miles from Vermont and New Hampshire. Pine woods, stone fireplace, stream, 300 ft. frontage on Rt. 64. Photos avail. \$4,000. B. deVeer, Ext. 2229 lunchtime.

HOUSE - 4 years old, 3 bedroom ranch on the North Shore. Fully landscaped, many extras, private beach rights, 7 miles from Lab. \$21,000. SH 4-3185 between 4:30 & 7.

DIVING EQUIPMENT - Dacor living lung, 1 tank, double diaphragm, 2 stage regulator, lg. duck flippers, Squal face mask, 5 yrs. old, needs cleaning. \$65. Also Ice King insulated suit size 42/44, never worn, \$10. Sunbeam elec. juicer, \$4. Ext. 7143 or 281-8390 after 6.

HAM TRANSMITTER - Heath HX-10, SSB, AM, CW, in excel. cond. With Shure 440SL mike, Vibroflex "Bug," manual. \$350. RA 8-0273 evenings except weekends.

MOTOR CYCLE - Harley Davidson, excel. running cond. 1942 (large cycle). Asking \$250. P. Foster, Ext. 2152.

SINGLE BED - Mahogany cordovan, inner spring mattress, foam rubber mattress. \$35. J. Dispart, Ext. 2389, 12-12:30. 281-8943 after 5.

CRIBS - Pair of matched cribs, compl., spice oak finish, very good cond. \$75 for both. McCracken, Ext. 432.

MISCELLANEOUS - China, glasses, pots & pans, other kitchen utilities. Bathroom scale, 1962 Motorola TV, portable with stand. Any reasonable offers accepted. Ostman, Ext. 7733 or SH 4-5542.

WANTED

BABYSITTER - To care for child of working mother in my home in Center Moriches. 8:30 to 5:30. V. May, Ext. 2449 or 878-2106 after 4.

FRENCH TEACHER - Woman to teach intermediate to advanced French to four children, aged 6 to 11. Mrs. J. Archambeau, 878-0963.

USED GOOSE DECOYS - Wood or plastic, field or water. Bill, Ext. 7642.

HOMES - For mongrel 6-week old puppies. Choice of ten, males & females. Bob, Ext. 2351 or GR 5-4330.

OUTBOARD - Small, used, for dinghy. McCracken, Ext. 432.

HOUSE - Unfurnished or partly furnished 3 (or possibly 2) bedroom house in Bellport, Brookhaven, or East Patchogue areas. S. James. SH 4-5656.

FOR RENT

HOUSE - 4 years old, 3 bedroom ranch, convenient to stores, schools & worship; private beach; occupancy at your convenience. \$150 per month. SH 4-3185 between 4:30 & 7.

COTTAGE - In Shoreham Village. Completely furnished. Living room, 3 bedrooms, dining room, kitchen with utilities, bathroom. Few minutes walk to beach. \$130 per mo. 1 year (or longer) lease. Oil heat. Available Oct. 13. Ostman, Ext. 7733 or Sh 4-5542.

HOUSE - 268 Durkee Lane, East Patchogue. 25 min. from Lab. 3 bedrooms, compact living room, lg. kitchen. \$135 per month. GR 5-7217 between 8:00 a.m. and 10:00 p.m.

HOUSE - Fully furnished, 2-3 bedrooms, living room, dining room, kitchen, bath, big sun porch, garage, garden, fully insulated, 12 min. from Lab. Lease 6 months or more. Chanana, Ext. 2894 or 2971 or 281-3294 evenings.

HOUSE - Cape Cod, 2 bedrooms, completely furnished. All modern appliances, incl. TV & wash. machine. 15 min. from Lab. R. Slavinski, Ext. 2849.

CARPOOLS

PASSENGER - Wanted for established carpool, Sayville area. Must be punctual. C. Cantera, Ext. 2376.

DRIVER - Would like to form or join carpool from North Brentwood area. Tom, Ext. 2261.

FOUND

KEY - Found in Building 510.

PENCIL - Scripto, found in Building 510.

Recreation Office - 3 Center Street