

the Bulletin Board

VOLUME 18, NUMBER 1

Published by the BNL Personnel Office

OCTOBER 13, 1964

INTERNATIONAL HARVEST MOON BALL

It's time for a wing ding, and that's just what the Personnel Division has in mind for the BERA-sponsored **International Harvest Moon Ball**. On Friday, November 6, at 9:30 p.m., Wayne Foster's orchestra featuring the ever-popular Herman Stenzler, will set the gymnasium humming with your old and new favorites. Everything will be kept semi-formal, mix and beer will be sold at cost, and plenty of chips and pretzels will be on the house.

Tickets bought at the door will be available at the reduced price of \$1.50 each for employee/escort and only \$2.00 each for guests. All tickets will be sold at the door.

CONCERT SCHEDULE

- 11-17-64 JUILLIARD QUARTET
- 12-10-64 NEW YORK CHAMBER SOLOISTS
- 1-26-65 MIECZYSLAW HORSZOWSKI
- 2-23-65 THE FESTIVAL WINDS
- 3-25-65 THE RENAISSANCE QUARTET

Admission Prices

Series adult	\$10.00
Series child under 18	5.00
Single admission employee	3.00
Single admission child under 18	1.50
Guest	3.50

Series tickets will be available from your department ticket seller in the near future or may be purchased at the door.

FORTIETH BROOKHAVEN LECTURE

By: VANCE L. SAILOR

Physics Department

Title:

"Oriented Nuclei"

Lecture Hall — Wed., Oct. 14 — 8:00 p.m.

A buffet supper (\$2.75) will be served at the Brookhaven Center before the lecture, beginning at 6:00 p.m. Reservations should be made at least one day in advance by calling Ext. 2302 before 5:00 p.m. or Ext. 2453 in the evening.

Refreshments will be available in the Exhibit Hall following the lecture.

BNL STAFF MEMBERS CONTRIBUTE SCIENTIFIC LITERATURE TO FOREIGN COUNTRIES

About one year ago, an appeal was made in the BULLETIN BOARD for technical books and journals no longer needed by the owners. The response has been most gratifying, and several large shipments have already been made to the Engineers and Scientists Committee of the People-to-People Program. This organization of volunteer workers takes care of distributing the material to universities and libraries in developing countries. In all cases, literature is sent selectively only to those institutions that have expressed a specific desire for material in certain fields.

The accompanying photographs show actual material donated by Brookhaven staff members, in use at the Middle East Technical University Library in Ankara, Turkey.



Those wishing to continue the good work already begun at the Laboratory are invited to donate suitable technical material. Please contact Dennis Puleston, Ext. 2329, or John Binnington, Ext. 2294.



NOVEMBER 5, 1964

Details in next week's
BULLETIN BOARD !!

BERA FILM SERIES

THE GOOD SOLDIER SCHWEIK



Thurs., Oct. 15 — 8:30 p.m. — Lecture Hall

Joseph Schweik is a fumbling, bumbling character who was brought into the world by the pen of Jaroslav Hasek after World War I in the satirical Czech novel "The Adventures of the Good Soldier Schweik." Schweik is a dealer in stray dogs, making them saleable by the addition of make-up and a pedigree. He isn't dishonest — it's just that people like pedigreed dogs. When war breaks out, Schweik makes the error of saying what he thinks. This trait promptly lands him in the Army's psychiatric ward where he is subjected to a hilarious set of tests. The outcome, in Schweik's words, is that he is made a "certified idiot."

And so it goes as Schweik's misadventures provide infinite incidents to laugh at, and to think about. The film is a satire on war, but not a biting satire, for war is only a background for novelist Hasek's commentaries on the ironies of life. Actor Heinz Ruhmann, introduced to American audiences in the recent re-make of "Captain from Kopenick," is perfect for the role. He is small, a touch on the plump side, with a mobile face and a gift for pantomime and comic expression that rank him among the finer comedy artists.

"Ruhmann is one of the world's great comedians, and it is doubly effective here because he looks like the Schweik of the Lada cartoons which are as integral a part of Hasek's satirical novel as the Tenniel illustrations are of Alice in Wonderland. The result is fantastic... It is Candide, older fatter, more rumpled, but as stupid and happy as ever, in a stupid but miserable world... It is Ruhmann's show. He is a Teutonic W.C. Fields, totally absurd and totally wonderful, ripping apart the Austrian bureaucracy and military high command." —NEWSWEEK

IMPORTANT REMINDER! !

Something interesting's cooking for
NOVEMBER 5, 1964

SEPARATE TABLES'
WHO'S WHO

Anna Marie Czarnecki

Anna Marie is making her stage debut in this BNL production as Anne Shankland, the sophisticated model coasting between husbands. Type-casting? Not on your life! She has been working in the Purchasing Division for three years, and is the happily-married mother of a ten-year-old daughter. Look for her, on stage, November 19, 20, and 21.

CAFETERIA SPECIAL

Thursday, October 15

Small Juice
Celery and Olives
Tossed Salad
Baked Chicken Breast Almondine
Mexican Rice
Green Peas
Strawberry Shortcake
Beverage
\$.99

Arrivals and Departures

WELCOME TO BNL

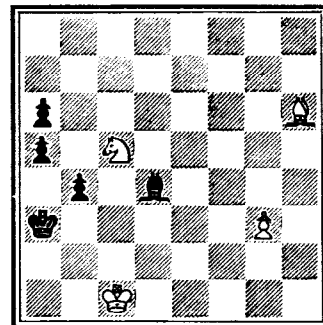
CHEMISTRY	
Edwin Hamilton	Ext.
MEDICAL	
John C. Heinrichs	301-37
Edith P. Smith	7134
PHOTOGRAPHY & GRAPHIC ARTS	
Karl H. Grodewald	2461
PHYSICS	
Mark Sakitt	
PLANT MAINTENANCE	
Gerald Dennen	2120

RECENT DEPARTURES

INSTRUMENTATION & HEALTH PHYSICS
Donald E. McClure
MEDICAL
Yvonne M. Beard
Sheldon Brandes

CHESS PROBLEM

G. Sachodakin shows us a unique ending in this week's problem. White is to play and win. It is known that a knight alone cannot mate, but look at the final picture here. Solution elsewhere in the BULLETIN BOARD.



VOLLEYBALL FILMS

Two training films of the U.S. Volleyball Association will be shown at 5:15 p.m. on Thursday, October 22, at the Recreation Hall in the Apartment Area. Total running time is thirty minutes. Plans for the coming season will also be discussed.

PERSONNEL SERVICES

Recreation Office — 3 Center Street
Daily 9:00 a.m. — 1:00 p.m.

New York Rangers — Discount exchange coupons are now available for the games being played at Madison Square Garden on October 21 and 28, December 9 and 16, and January 6.

New York Rovers — Discount exchange coupons are now available for all games being played at Madison Square Garden.

New York Knickerbockers — Discount exchange coupons are now available for basketball games at Madison Square Garden on October 17, 24, and 30, November 14, 21, and 24, December 1, 12, and 27.

Micromet — A limited quantity of crystals and a few feeders are still available for purchase.

COOKING EXCHANGE GROUP

The second meeting of the Cooking Exchange Group will be held on Wednesday, October 21, from 3 to 5 p.m. in the Recreation Building, BNL Apartment Area. All who are interested, on and off site, will be most welcome. For further information, contact Joy Johnson at SHoreham 4-5378 or Norma Chernick, GRover 5-0167.

LEARN TO SWIM

Classes are now being organized to teach you to swim, or if you're struggling along, to swim a little better.

Adult classes are offered to employees and their wives or husbands. Lessons will be held at the pool on Wednesday evenings at 6:00 p.m., beginning November 4. Each session will be one hour long, once a week, for a period of seven weeks. The fee for the entire course will be \$4.00 per person. Please register as soon as possible. Registration fee must accompany your application. Send or bring to G. Sabine, 3 Center. (Make checks payable to BERA.)

Children's classes will be organized for Friday evenings from 6:30 to 7:30 p.m. starting November 6, if enough children are registered in advance. Children must be at least four feet tall. The registration fee, procedures, etc. will be the same as for the adult class.

Registration deadline is October 28 for both classes (or before if maximum is reached).

FISHING CONTEST

This is it, gentlemen! The months of October and November mark your last chance to enter the BNL Fishing Contest. Every two-month period has seen some remarkable fish - both fresh and salt water - entered, and these last two months have all the earmarks of being even better. From Fire Island Inlet to Montauk, the surf is producing bass and some blues. And the Sound, from all reports, has loads of blackfish, with bass also making their appearance. Cod fishing, too, should pick up from here on in. So don't stow that rod away for the winter - the big one may still come your way! Our winners for the August-September period were Richard Nedosik with a 5 lb. 12 oz. largemouth bass, and Edward Skrezek with a 3 lb. 4 oz. weakfish for the average fish award.

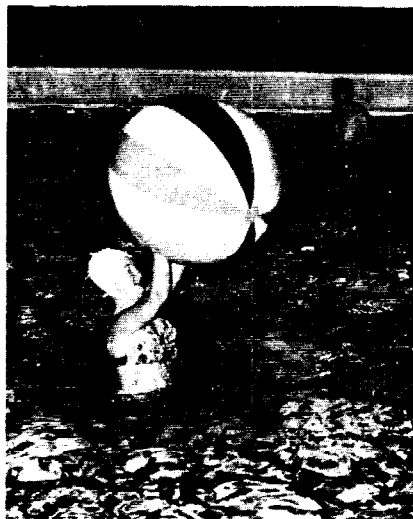
Further prizes will be awarded in the near future, so keep your entries coming in and make your last ones the best.

SOLUTION TO CHESS

- | | |
|--|---------|
| 1. N-K6 | 1. B-B7 |
| 2. K-N1, White must prevent K-R7 ... | 2. BxP |
| 3. N-B5 | 3. P-N6 |
| Threatening ... B-B1 mate | |
| 4. B-B8 a good move, now the threat is N-K4 check, K-R5, N-B3 mate | 4. B-K8 |
| 5. N-Q3 check | 5. B-N5 |
| 6. BxB check | 6. PxB |
| 7. N-N2 | 7. P-R4 |
| 8. K-R1 | 8. P-R5 |
| 9. N-B4 mate. | |

FREE SWIM ON TUESDAY, OCTOBER 20

Come on out and see what you'll be missing if you don't plan on using the pool this year! Be our guest. Bring the family and take a dip on the house during the first night the pool is open on its fall-winter schedule:



Tuesday—Wednesday—Thursday—Friday
5:00 p.m. — 10:00 p.m.

SEASON TICKETS
(October - June)

Employee \$ 5.00
Family 10.00

DAILY TICKETS

Employee or family member \$.35
Guest60

LEAGUE DEADLINES

Entry blanks are at the Recreation Office for both the volleyball and basketball competitions which are slated to start November 17.

Basketball

Deadline October 23.

Volleyball

Deadline November 5.

If you would like to play but your department doesn't have a team, call the Recreation Office, Ext. 391, and your name will be put in a players' pool for distribution to team captains.

FREE TRANSPORTATION TO PATCHOGUE

By calling Ext. 585 on Mondays or Thursdays, on-site residents may request transportation to Patchogue for shopping on Tuesdays or Fridays. The car will depart from the school bus shelter in the Apartment Area at 9:00 a.m. and will leave Patchogue at noon for the return trip.

GYM CLOSED

Due to Visitors' Day and the BERA dance on November 6, the Gym will be closed for all physical activities thru November 10. Watch the BULLETIN BOARD for the fall schedule announcement.

CLASSIFIED ADS**FOR SALE**

1961 FALCON - Std. trans., Tudor, very clean, excel. mech. cond., front tires less than 3,000 mi., snow tires on rear, spare less than 10,000 mi. Best offer. E. Collins, Ext. 2812.

1959 FORD - Galaxie, convertible, T-Bird engine, new w/w tires, top perfect cond., excel. running cond., r/h, Sacrifice, \$650. J. Whaley, HR 3-3569.

1959 VW KARMANN GHIA - Convertible in good cond., white with red interior, top 1 yr. old, r/h, seat belts, good tires. Best offer over \$800. V. Diebel, Ext. 2322 or AT 6-3970 after 6:00 p.m.

1961 CHEVROLET - Impala convertible, fawn, V8, power glide, r/h, new tires, excel. cond. Must sell, \$1,250 firm. Ext. 2302 before 7:30.

1958 BUICK - Convertible, ps, r/h, good top, new back window, 2 new tires, mech. excel. \$400. Ext. 622.

1957 FORD - Station wagon, NYS inspected and approved, new tires, front end adjusted and all wheels balanced, new tail pipe and lifetime muffler. Good dependable transportation. Priced for quick sale at \$250. A. Rosenka, Ext. 445 or YA 4-3553.

1954 CHEVROLET - 2 door, 16 mpg, new gear box, excel. cond. \$100. E. Patchogue. 475-1844.

1962 VOLKSWAGEN - Sedan, green, excel. cond., asking \$1,200. M. Renn, Ext. 330.

1957 MERCURY - 2 door, red sedan with white top. Std. trans., good tires. Mike, Ext. 7734.

1957 FORD - Station wagon, V8, auto. trans., r/h, padded dash, inspected. \$350. YA 4-3522.

1957 RAMBLER - Station wagon, 4 door, 6 cyl., auto. trans., r/h, reclining seats, good rubber. Low mileage, new brakes, inspected. \$375. YA 4-3522.

1952 PONTIAC - 2 door coupe, r/h, auto. trans., extra rim, snow tires, good upholstery, excel. second car. \$75. W. Lundgren, Ext. 686 or JU 8-4925.

1960 FORD PICK-UP - 1/2 ton, 6 cyl., excel. cond., dual traction rear, r/h, trailer hitch, good tires, red. \$950. See it at the Cosmotron parking lot or call HR 3-1866.

1954 OLDSMOBILE - 88. Good tires, body fair, good running cond. \$60. A. Wirszyala, Ext. 587 or 281-6173.

1957 MERCURY - Convertible. Best offer over \$100 takes it. H. Houtsager, Ext. 7677 or 7684 or AT 6-0691.

1958 PLYMOUTH - 4 door, power brakes, new trans., excel. cond. \$400. Charles, Ext. 2811.

1961 VOLKSWAGEN - Blue, mint cond., 4 new tires, 2 new snow tires, fully equipped with gas, oil, temp., and ammeter gauges, seat belts, radio. \$1,100. J. Langfeldt, Ext. 2552 or AT 6-1331 after 6.

1964 BUICK SPECIAL - 2 door, V6, std. trans., r/h, back-up lights, 17,000 miles. Asking \$1,800. F. Dimino, Ext. 2410 or HR 3-5304 after 6.

1954 FORD PICK-UP - 1/2 ton, V8, new main seals front & rear, points & plugs & rear tires. Heavy duty springs, body diamond steel lined. Asking \$400 or best offer. F. Dimino, Ext. 2410 or HR 3-5304 after 6.

1957 MERCURY - 4 door, auto. trans. \$250. Ext. 2432.

1961 FORD - Fairlane, white sedan, 2 door, owner leaving Nov. 8. \$780. R. Perret, Ext. 407.

1957 FORD - Station wagon, black & white, r/h, with V8 engine in fine cond. Good car for side jobs. Body needs work. Asking \$300. M. Renn, Ext. 330.

1961 MERCURY - Monterey, auto. trans., 24,000 miles, new tires, excel. cond. Get rid of those compact blues. \$950. AT 6-9260.

1963 OLDSMOBILE - F-85 convertible, auto. trans., ps, 4 new tires, 21,000 miles. Show room cond. Any offer over \$1,999.99. AT 6-9260.

1958 VOLKSWAGEN - Immaculate cond., black with red leather upholstery. Low mileage. \$595. firm. E. Rogers, Ext. 2554.

1958 BUICK - Special, 4 door hard top, V8, ps & pb. P. Lieberman, Ext. 7732.

1961 PLYMOUTH - 9 passenger wagon (Chrysler chassis), V8 engine, auto. trans., r/h, back-up lights, vacuumatic door locks, new w/w's orig. owner, 37,700 miles. \$1,450. F. Horn, Ext. 2383, 2752, or LT 9-2759 after 6.

1957 FORD - Hard top, excel. mech. cond., good dependable transportation. A real buy at \$250. GR 5-3803 after 6.

1953 FORD - Customline, 4 door sedan, 8 cyl., std. trans., flat top engine acclaimed by mechanics at the BEST engine Ford ever made, r/h, excel. mech. cond. Best offer over \$75. Available beginning of Nov. M. Danzig, Ext. 7662.

1961 CHEVROLET - Impala convertible, r/h, auto. trans., V8, full power. Can be seen Fri., Sat., Sun. Sacrifice. AT 6-9199 or AT 6-0177.

1957 PLYMOUTH - Station wagon, auto. trans., ps/pb, good tires, new brakes. Car in exceptionally good cond. \$300. firm. Ext. 367.

1949 PLYMOUTH - R/h, excel. cond. Must be seen. \$150. AT 6-9199 or AT 6-0177.

1960 OLDSMOBILE - "Super 88," 4 dr. hard-top, auto. trans., r/h, full power, extras, excel. cond. \$1,400. Ext. 2408 or EM 3-9513 after 6.

16' RUNABOUT - Dargel, molded plywood, 35 hp elec. Johnson, navy top, etc. \$375. Frank, Ext. 451.

OUTBOARD - 15 hp elec. start 1956 Evinrude, 6 gal. remote tank, F.N.R. shift. \$50. H. Stratton, Ext. 2406 or AN 6-2822 after 6.

20' SAILBOAT - Narrasketuck, \$300. 286-8644 evenings.

22' SEA SKIFF - Verity, Lapstrake, shelter cabin, 109 hp Gray Marine engine, 4 wheel trailer incl. \$695. Ext. 2201 or LT 9-2737.

8' HYDROPLANE - MiniMax, racing wheel & cables. Just re fiberglassed last season. \$45. Herb, 878-2827 after 4.

18' OUTBOARD - Fiberglass, 75 hp Johnson elec. 1961. Navy top & covers, 2 bunks, head, fully equipped. Ext. 2735 or PA 7-1199.

SHOT GUN - Remington pump 12 ga., 4 chokes, 2 plugs, & case. Excel. duck gun. AT 6-8975 after 6.

WINDOW SCREENS - Tension type, for double hung windows. Fifteen available in assorted sizes, \$2 each. Ext. 2515.

21" TV - Floor model, excel. cabinet, good working cond. \$45. H. Sauter, Ext. 7637 or SE 2-8710.

BOOKS - 20 volumes Book of Knowledge, 1963 ed., 2 volumes Funk & Wagnalls standard dictionary, 1963 ed. Also Min/Max II teaching machine (self tutoring) mod. English punctuation with steno speed courses incl. GR 5-4198.

GO KART ENGINE - 5.2 hp Clinton. Used 5 hours. Top cond. Gas tank incl. \$30. Alvarez, Ext. 388 or AT 6-8645 after 5.

BEDROOM SUITE - 10 pieces (make 2). Quality mahogany furniture in excel. cond. Double bed with Englander mattress & box spring, dresser with mirror, lg. chest, vanity with bench & mirror, 2 night tables, & chair. \$1000 orig. All for \$200. Alvarez, Ext. 388 or AT 6-8645 after 5.

RACING CAR SET - Aurora 500. HO scale. Orig. cost \$28. Sell for \$17. Good cond. Don, Ext. 2735.

FURNITURE - Bedroom, living room, bunk beds, Early American. Folding bed, dinette, 2 night tables, very good cond. SE 2-3021.

REFRIGERATOR - G.E., good cond. \$15. Hank, Ext. 601.

TRANSMITTER - Viking Adventurer 50 watt CW ham transmitter (Xtal or VFO required). Used only 20 hours. Orig. \$70, asking \$50. N. Whitney, Ext. 7756.

BABY CARRIAGE - \$5. Also beach umbrella, \$5. Ext. 532.

SNOW TIRES - Size 7.50-14. Orig. price \$57. Used only 1 1/2 winters, now \$28 firm. N. Nakanishi, Ext. 2723.

ELECTRIC RANGE - General Motors, full size oven, 4 top burners with deep well, excel. cond. \$20. Ext. 2882.

BABY CARRIAGE - Storkline, almost new, \$9. Also bassinet, \$2; feeding chair, \$3. A. Fleitman, Ext. 344.

DINETTE SET - All light oak formica table top and legs, incl. chair legs. 4 chairs, curved back & upholstered with fine vinyl coverings. Must be seen. Best offer. Warren, Ext. 445 or HR 3-2820 after 6.

CAMERA - Canonet, Canon lens SE 45 mm F1.9, elec. eye, auto. & manual, leather carrying case, lens hood, used 2 mos. \$75. N. Oji, Ext. 2849.

SPEAKERS - 2 Utah 8" speakers with 21" reflex cabinets, excel. cond. George, Ext. 2156.

BEAGLE PUPS - AKC registered, 7 weeks old. MacTitmus, Ext. 439 or 281-9559 after 5:30.

PIANO - Lester spinet with bench, full keyboard, and damp chaser. Like new. SE 2-3919 or Ext. 2131.

WANTED

RELIABLE WOMAN - To care for child and light housekeeping weekdays in Bellport. AT 6-0778 after 6.

\$950 - In exchange for 1962 Volkswagen black sedan. Must sell. M. Caunter, Ext. 2159.

ENGLISH BABY CARRIAGE - To be used in the play "Separate Tables" presented by the Theater Group in Nov. Anyone having information about borrowing or renting this item call R. Streab, Ext. 2878.

BOSTON BULL TERRIER - Puppy. H. Woelfel, Ext. 7686 or 7677.

CHAIR - Office swivel chair with arms. Cheap. Ext. 2917 or SH 4-5969.

MAN'S ENGLISH BIKE - Used. Ext. 2102.

ARC WELDER - Ext. 597.

OLD MOTOR SCOOTER WHEELS - Or whole motor scooter. Ext. 353.

USED PIANO - Also used musical instruments. H. Genia, Ext. 2407.

TRADE - Mother of two small boys wishing an occasional day off looks for another in a similar situation willing to leave her small children on an exchange basis. Ideal arrangement for visiting the city. SH 4-5532.

MOUSE CATCHER - Young. B. Kohler, Ext. 2102.

FOR RENT

APARTMENT - Unfurnished, 5 rooms & bath, garage, located approx. 10 min. from Lab. \$110 per month rent incl. heat. YA 4-6152 after 5.

HOUSE - 3 bedroom duplex. \$100 per month, utilities not incl. If children in family, prefer school age. SH 4-3857.

APARTMENT - In East Patchogue, 3 rooms & bath. Furnished. AT 6-9524 after 5:30.

APARTMENT - In Patchogue, 3 rooms & bath, unfurnished. GR 5-2084.

HOUSE - Cape Cod with garage, 4 rooms & bath, fully furnished incl. TV, hide-a-bed couch, almost new 2-door 14 cu. ft. refrigerator. W/w carpeting in living room. Hot air heat. \$110 per month. 281-7813.

APARTMENT - Unfurnished, 4 large rooms on S. Country Road, E. Patchogue. \$110 per mo., heat incl. 1 yr. lease. Ext. 2583 or 751-2216.

CARPPOOLS

DRIVER - Would like to join carpool from Stony Brook area. H. Blum, Ext. 7602.

CARPPOOL - Interested in new members from North Bayshore & Brentwood area. Rich, Ext. 2374.

LOST

PURSE - Small brown cowhide purse. Lost somewhere between Cafeteria and Medical Building. B. Brezisky, Ext. 7141.

FOUND

GLASSES - Sun, dark frames, found near tennis courts.

Recreation Office — 3 Center Street