

the Bulletin Board

VOLUME 18, NUMBER 2

Published by the BNL Personnel Office

OCTOBER 20, 1964

NOTICE FROM PAYROLL

Friday, October 30, is the scheduled pay day for weekly and monthly employees. However, in order to facilitate the cashing of payroll checks at the on-site Peoples National Bank, the weekly employees' checks will be distributed at the Bank on Thursday, October 29 and the monthly employees' checks will be distributed on Friday, October 30.

The Bank hours will be:
Thursday, Oct. 29
9:45 a.m. to 12:00 noon
12:30 p.m. to 4:00 p.m.
Friday, Oct. 30
10:00 a.m. to 3:00 p.m.

SIXTH ANNUAL BERA ART EXHIBIT TO OPEN SOON

The BERA Art Committee announces that arrangements have been completed for the Sixth Annual Art Exhibit, to open on Wednesday evening, November 4. The show will consist of paintings and sculptures by a number of twentieth century artists, on loan from the Bertha Schaefer Gallery of New York City. Miss Schaefer has graciously consented to attend the opening, and will be pleased to discuss informally the various works of art on exhibit. It is hoped that some of the artists represented will also accept the invitation to attend the opening.

A further announcement on the Art Exhibit, giving the names of the artists and other details, will appear in next week's BULLETIN BOARD.

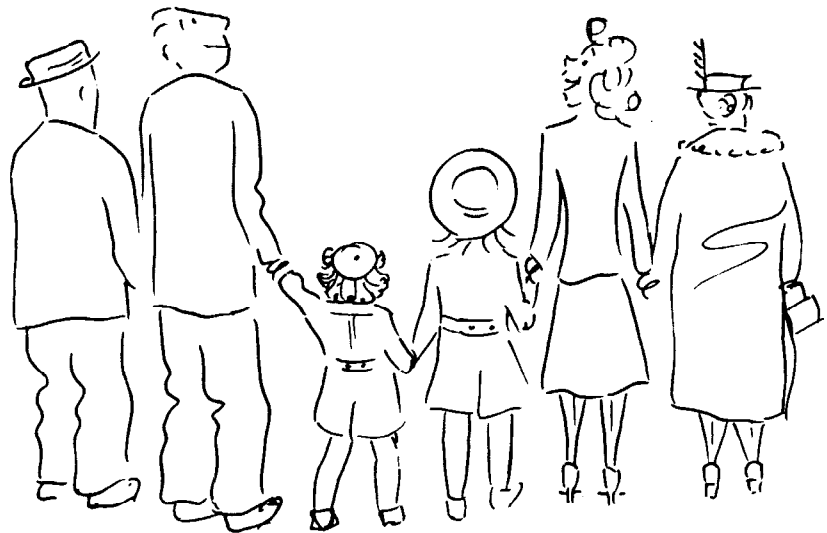
HAVE YOU HEARD?

It's dance time! On Friday, November 6, beginning at 9:30 p.m. the Wayne Foster orchestra featuring Herman Stenzler will strike a chord and BERA's **International Harvest Moon Ball** will be underway. Don't miss the boat; make your plans now to be among those who will be enjoying the evening. Tickets will be sold only on the night of the dance.

There will be plenty of fun for all at the low price of \$1.50 each for employee and escort and \$2 each for your neighbors.

For the hungry, there will be free chips and pretzels, and of course mix and beer will be sold at cost. See you there!

OPEN HOUSE FOR BNL EMPLOYEES AND THEIR FAMILIES TO BE HELD NOVEMBER 5



On behalf of the Laboratory, the BULLETIN BOARD extends a cordial invitation to all employees and their families to participate in an Open House on Thursday, November 5, between the hours of 3:00 and 7:00 p.m.

Because Brookhaven and its work are of interest and importance to so many living in this vicinity, it annually plays host at a series of Visitors' Days. These programs, however, are designed for the general public and do not give BNL employees and their families the leisurely and comprehensive visit to the site that they might like. With this in mind, Open House will differ from Visitors' Days, in that it will be exclusively for employees and family members and will allow them to see the ordinary work-day aspect of many Laboratory locations that are closed when the general public visits. The aim of the November 5 program will be to permit our personnel to show members of their immediate families their own places of work, as well as other spots of interest, on an informal schedule of their own choosing. Of course, common sense dictates that certain locations must be restricted even during Open House because of potential dangers to children and others unfamiliar with the area.

Efforts will be made to schedule work so that employees may personally show their families around the site. In the case of employees having essential duties, supervisors will arrange such employees' work schedule to the extent that they are consistent with minimum work interruption and maximum safety standards. Employees not participating in Open House will, of course, be expected to complete their normal work routine as assigned. There will be no loss in pay for employees excused by their supervisors to participate in Open House. Time cards will be marked as on a regular work day, with the time spent on Open House considered as assigned duty.

Next week's BULLETIN BOARD will announce further details concerning the Open House schedule. In the meantime, be sure to make a date with your family to visit the Laboratory on Thursday afternoon, November 5.

SEPARATE TABLES' WHO'S WHO



Anne Lautzenheiser — Sybil

Anne brings a wealth of theatrical experience to her role in this production. From Boston, she is a graduate of the University of Massachusetts and has been working in the Chemistry Department for the past year. After doing chorus work on "Once Upon a Mattress" at Sayville's Musical Workshop, she formally debuted in "A Thurber Carnival" at BNL. Anne also sings with the North Shore Choral Society and is an active member of the BNL Outing Club. How, you may ask, can such an outgoing gal portray a lonely, mother-dominated spinster? We forgot to mention: she's talented too!

LEARN TO SWIM

Classes are now being organized to teach you to swim, or if you're struggling along, to swim a little better.

Adult classes are offered to employees and their wives or husbands. Lessons will be held at the pool on Wednesday evenings at 6:00 p.m., beginning November 4. Each session will be one hour long, once a week, for a period of seven weeks. The fee for the entire course will be \$4.00 per person. Please register as soon as possible. Registration fee must accompany your application. Send or bring to G. Sabine, 3 Center. (Make checks payable to BERA.)

Children's classes will be organized for Friday evenings from 6:30 to 7:30 p.m. starting November 6, if enough children are registered in advance. Children must be at least four feet tall. The registration fee, procedures, etc. will be the same as for the adult class.

Registration deadline is October 28 for both classes (or before if maximum is reached).

HALLOWEEN MIXER

Several members of the Medical Department have gotten together and planned an informal Halloween Get-Together. They extend an invite to any guests who'd like to join them - old-timers, newcomers, couples, singles. Come in costume if you're in the mood - most will be wearing jeans and shirts. Bring your own liquid refreshment and mixer; ice and pretzels will be provided. For details, see your department secretary. The time is Friday evening, October 30, in the Recreation Building beginning at 8:30 p.m.

CAFETERIA SPECIAL

Thursday, October 22

- Small Juice
- Celery and Olives
- Cole Slaw
- Steamboat Roast
- French Fries
- Green Peas
- Chocolate Cream Pie
- Beverage

\$.99

NOTE! There will be no Cafeteria Special next Thursday. Beginning October 29, the Special will be served every other week. Watch the BULLETIN BOARD for further announcements.

Arrivals and Departures

WELCOME TO BNL

BIOLOGY		
Dorothy M. Flint	Ext.	367
David M. Glick		386
Bill Greenberg		359
PHYSICS		
Ronald J. DeCastro		
Carroll A. Quarles, Jr.		2836
Margaret E. Roche		2326
Rafael Yaari		2505

RECENT DEPARTURES

CENTRAL SHOPS	
Josef W. Melitz	
CHEMISTRY	
Lars B. Ostman	
PHYSICS	
Jean Yoccoz	

POOL SCHEDULE

Tuesday—Wednesday—Thursday—Friday
5:00 p.m. — 10:00 p.m.

SEASON TICKETS
(October - June)

Employee	\$ 5.00
Family	10.00

DAILY TICKETS

Employee or family member	\$.35
Guest60

ROOM FOR MORE!

Yes, there's still time for you to join the Arthur Murray dance classes which are being held on Wednesday evenings in the Recreation Building at 8:30 p.m.

No, you don't need a partner. Come alone if you like, and partners will be paired by the instructors. Wives, husbands, girl and boy friends are welcome.

Oh yes, the fee is \$15 for the 10-week course. Register at the Recreation Building this Wednesday or next.

GYM CLOSED

Due to Visitors' Day and the BERA dance on November 6, the Gym will be closed for all physical activities thru November 10. See this week's BULLETIN BOARD for the fall schedule announcement.

SINGING SEASON STARTS SOON

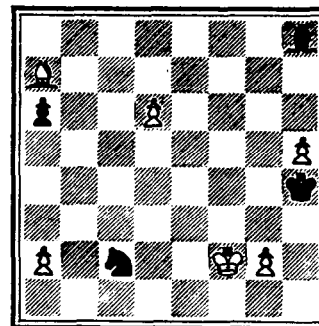
The Brookhaven Mixed Chorus will begin its season on October 28 at 5:30 p.m. by the grand piano in the Brookhaven Center. New singers in all parts are welcome. Our repertoire ranges from Palestrina to Victor Herbert, and the main requirement is an enthusiastic enjoyment of group singing. Call Lois Jones, Ext. 2200, or Dick Miller, Ext. 686, if you have questions. If not, we'll see you at the Center on Wednesday, the 28th.

VOLLEYBALL FILMS

Two training films of the U.S. Volleyball Association will be shown at 5:15 p.m. on Thursday, October 22, at the Recreation Hall in the Apartment Area. Total running time is thirty minutes. Plans for the coming season will also be discussed.

CHESS PROBLEM

In this week's problem, White (S.M. Birnov) has three pawns for a knight, but is it enough to win? Solution elsewhere in the BULLETIN BOARD.



GYMNASIUM OPENS NOVEMBER 10

From Tuesday, November 10, through April, the Gymnasium will be open until 9:30 p.m. on Monday through Friday evenings. Equipment is available for badminton, volleyball, basketball, table tennis, exercising, etc.

SCHEDULE

Monday

5:00 - 9:30 p.m. Tennis (by reservation); Table Tennis; Exercising

Tuesday

5:00 - 6:45 p.m. *Volleyball League; Fencing Club; Judo Club; General Activities

6:45 - 9:30 p.m. *Basketball League (2 games 7:00 & 8:10 p.m.); Table Tennis

Wednesday

5:00 - 7:00 p.m. Archery Club

7:00 - 9:30 p.m. General Activities

Thursday

5:00 - 6:45 p.m. *Volleyball League; Judo Club; General Activities

6:45 - 9:30 p.m. *Basketball League (2 games 7:00 & 8:10 p.m.); Table Tennis

Friday

5:00 - 9:30 p.m. Tennis (by reservation); Table Tennis; Exercising

*Exact game times may be adjusted depending on the leagues' final structures.

CAMERA CLUB

An organizational meeting for the coming season will be held by the Camera Club at 8:15 p.m. on Thursday, October 29, at the Recreation Building.

CLASSIFIED ADS

FOR SALE

1961 FALCON - Std. trans., Tudor, very clean, excel. mech. cond., front tires less than 3,000 mi., snow tires on rear, spare less than 10,000 mi. Best offer. E. Collins, Ext. 2812.

1961 VOLKSWAGEN - Sedan in excel. cond., r/h, seat belts. \$1,050. Mike, Ext. 613.

1962 VOLVO 122S - B-18 engine, 4 door, blue, \$1,400 firm. PY 9-5325.

1963 VOLKSWAGEN - Blue, w/w, white leather interior, excel. cond. \$1,425 firm. 281-7394.

1963 CHEVROLET - Impala Sport Coupe, auto. trans., r/h, ps, seat belts, padded dash, 6 cyl., 13,000 orig. miles. A black beauty, \$2,075. J. Disparti, Ext. 2389 12-12:30. 281-8943 after 5:15.

1952 FORD PICK-UP - 6 cyl., \$130. D. Mistler, GR 5-7615 after 5.

1958 OLDSMOBILE "98" - 2 door hardtop, white with black top, exceptionally clean, auto. trans., full power features. \$675. Ext. 2708 or YA 4-3581 after 5.

1956 PONTIAC - Station wagon, ps/pb, new motor, new brakes. Good cond. \$250. 751-0023 after 6.

1958 BUICK - Convertible, 5 good tires, good top, new back window, ps, r/h, mechanically excel., rides well. \$400. D. Schweitzer, Ext. 622.

1958 CITROEN - 4 door, std. trans., new tires, new paint, lots of new parts, 25 mpg. \$250. Ext. 622.

1956 FORD - Auto. trans., 4 new tires, excel. cond. \$250. Ext. 2874.

1955 OLDSMOBILE "88" - 4 door, hardtop, ps/pb, recent valve job, must drive to appreciate. Owner leaving, \$150. Archie, Ext. 2351 or WA 9-4106.

1956 FORD - Victoria, body in good cond., tires fair and engine fair. Best offer over \$115. J. Bullard, Ext. 7798.

1955 METROPOLITAN - Std. trans., r/h, good running cond., economical & inspected. Makes excel. 2nd car. \$100. K. Gray, 281-3361.

1957 PLYMOUTH - Station wagon, 6 cyl., std. trans., 5000 mi. on rebuilt engine. Very good. Bob, Ext. 2536.

1953 DODGE - 2-tone green & gray, flu-drive, 6 cyl., good running cond. \$75. SE 2-6426.

1956 BUICK - Hardtop, new tires, new water & fuel pump & muffler. Needs paint. Good transportation. \$80. G. Spatzier, Ext. 2410.

1963 VOLKSWAGEN - Sunroof, immaculate, extras, \$1,350 firm. Also 1958 Buick hardtop, 4 door, V8, ps/pb. \$325. P. Lieberman, Ext. 7732.

1952 PONTIAC - 2 door coupe, r&h, auto. trans., extra rim, snow tires, good upholstery, excel. second car. \$75. W. Lundgren, Ext. 686 or JU 8-4925.

1960 OLDSMOBILE - "Super 88," 4 dr. hardtop, auto. trans., r/h, full power, extras, excel. cond. Ext. 2408 or EM 3-9513 after 6.

1953 FORD - Customline, 4 door sedan, 8 cyl., std. trans., flat top engine acclaimed by mechanics as the BEST engine Ford ever made, r/h, excel. mech. cond. Best offer over \$75. Available beginning of Nov. M. Danzig, Ext. 7662.

1964 BUICK SPECIAL - 2 door, V6, std. trans., r/h, back-up lights, 17,000 miles. Asking \$1,800. F. Dimino, Ext. 2410 or HR 3-5304 after 6.

1954 FORD PICK-UP - ½ ton, V8, new main seals front & rear, points & plugs & rear tires. Heavy duty springs, body diamond steel lined. Asking \$400 or best offer. F. Dimino, Ext. 2410 or HR 3-5304 after 6.

1964 VOLKSWAGEN - Deluxe sedan, green, radio, defroster, w/w, shoulder safety belts, 2500 miles, full warranty. \$1,500. PA 7-2223.

1959 PLYMOUTH - 2 door, std. trans., 6 cyl., orig. owner, new battery, muffler, tires. \$275. Ext. 458.

1957 FORD - Station wagon, NYS inspected and approved, new tires, front end adjusted and all wheels balanced, new tail pipe and lifetime muffler. Good dependable transportation. Priced for quick sale at \$250. A. Rosenka, Ext. 445 or YA 4-3553.

1960 VALIANT - Station wagon, 4 door, 9 pass. ps/pb, r/h, 35,000 miles. \$775. John, Ext. 7692.

1954 PLYMOUTH - r/h, clean, reliable transportation. \$95. Ext. 600 or JU 8-4564.

1959 VAUXHALL - Gray with red leather interior, r/h, w/w's, economical. \$300. Pumo, JU 5-8140 after 6.

1958 CADILLAC - Sedan DeVille, 4 door, hardtop, all power, excel. rubber. \$695. Jake, Ext. 2211.

1958 FORD - 6 cyl., 2 door sedan, r/h, new clutch, new shocks, burns no oil, winterized. Inspected. Asking \$400. G. Guydish, Ext. 639 or PA 7-1267 after 6.

HOUSE - High ranch in Bellport near schools, 2 years old, 3 bedrooms, lg. family room, 2 car garage, built-in range, oven, dish washer, w/w carpeting, drapes, patio, beautiful corner plot, fully landscaped. Sacrifice, \$19,000. AT 6-0764.

HOUSE - 2 story Dutch Colonial in Brookhaven on 1 acre wooded corner lot. 2 car garage. \$21,000. Ext. 7677 or 7684 or AT 6-0691.

CAPE COD - 4 bedrooms, 1½ baths, w/w carpet, alum. storms & screens, finished basement, 1½ car garage, screened porch, dish washer, refrigerator & 12 cu. ft. chest freezer. Fenced 75x125 plot. Lake Ronkonkoma. \$15,000. JU 8-6879.

HOUSE - 5 year old split level, 4 bedrooms, garage, 1½ baths, storms & screens, w/w carpet. \$13,800. HR 3-0288.

FURNITURE - Antique Victorian loveseat, excel. cond., \$75. Antique cherry dropleaf table, \$75. 4 pine cornices, \$5 each. J. Whaley, HR 3-3569.

2 SNOW TIRES - And wheels 7.50x14 used one season. \$30. J. Radocy, Ext. 2800.

RECEIVING TUBES - 800 radio & television receiving tubes in orig. boxes. Popular numbers. Entire lot, \$300. A. Campo, Ext. 2351 or SH 4-5046.

HI-FI SPEAKER SYSTEM - Corner cabinet with 12" Capehart woofer & University tweeter, crossover, & balance control. Light mahogany stained plywood. Flat back (open), can also be used along flat wall. \$40. D. Christman, Ext. 7731.

POODLE PUPS - Miniature, AKC registered; silver, black, champagne. Health guaranteed. 281-8786.

PUG - Pedigree, AKC reg., 5 mos. old, apricot color, C. Dunn, Ext. 2389 or MY 4-4694.

TIRES - 2 first-line Firestone Nylonaire tires with rims, 670x15. Used 4 mos. \$20. P. Lieberman, Ext. 7732.

WATCH - Chronomaster by Croton Nivcda Grenchen in new cond. Full stainless steel case. Water proof. Shock resistant. Has 9 functions. \$50. Zellner, Ext. 577.

AIR CONDITIONER - Sears, 1 yr. old, 8500 BTU. \$100. H. Houtsager, Ext. 7677, 7684, or AT 6-0691.

FINISHING SANDER - Vibrator type, McGraw-Edison mfg., used 3 times. \$5. Ogden, Ext. 2532 or 325-0585 evenings.

RADIO TRANSMITTER - C.B. complete base & mobile, includes poly-comm. SR "23" & Pierce Simpson companion transceivers compl. with 115 V & 12 V P.S. mtg. brackets & power cables. Also incl. 20' base station whip with radials, 96" fiberglass mobile ant. with spring & bumper mount, also all ant. cables, connectors, & base ant. mount. \$450. or best offer. F. Dimino, Ext. 2410 or HR 3-5304 after 6.

25' SKIFF - 1960, shelter cabin, 2 bunks, head, 177 hp Chrysler V8. \$2,450. Ext. 2474.

OUTBOARD - 15 hp elec. start 1956 Evinrude, 6 gal. remote tank, F.N.R. shift. \$50. H. Stratton, Ext. 2406 or AN 6-2822 after 6.

20' SAILBOAT - Narrasketuck, \$300. 286-8644 evenings.

FUEL PUMP - Buick, \$1. Also generator, \$5. Both in very clean cond. Also push button radio from 1953 Buick, \$4. Ext. 622.

PIANO - Lester spinet with bench. Full keyboard & damp chaser. Like new. Ext. 2131 or SE 2-3919.

ACCORDION - 120 bass full key board, 7 treble shifts. F. Mahnken, Ext. 362 or FO 8-0113 after 6.

MOTOR CYCLE - 1942 Harley Davidson, excel. running cond. (lg. cycle). Asking \$250. P. Foster, Ext. 2152.

TIRE - New 560x12 w/w. \$15. Ext. 2708 or YA 4-3581 after 5.

BABY CARRIAGE - Bilt Rite. Good cond., \$10. D. Schweitzer, Ext. 622.

TIRE - Snow, 760x15, on Buick wheel. \$3. Ext. 622.

BABY CARRIAGE - Imported English Pedigree Coach. Almost new. Wheels may be removed and carriage used as car bed. Orig. \$120. Yours for \$35. Belfiore, Ext. 7782 or SE 2-3957.

CAMERA - Polaroid Mod. 95 like new. \$35. M. Marcus, Ext. 2480.

FLOOR WAXER - Professional, heavy duty, 12" dia. base. Buffer brush, 3 rolls ± 3 steel wool, paste wax incl. Orig. \$150. All for \$65. Belfiore, Ext. 7782 or SE 2-3957.

CAMERA - Leica 3C with special Sonnar 50 mm F:1.5 lens, Elmar 50 mm F:3.5 lens, Bessony close-focus copying adaptors and Sekonic L-38 exposure meter. Recently professionally overhauled & flash-sync installed. Excel. cond. & compl. with instruction books. \$100. LT 9-1342.

STEREO SPEAKER SYSTEMS - Each has 15" woofer mounted in sand-loaded bass reflex enclosure, 8" mid-range & 3" tweeter both in infinite baffle. X overs: hand wound, air gap coils, oil capacitors, T pads, no electrolytics. WE 8-3567 after 4 Mon. - Fri.

BICYCLE - Girls size 20. Pink & white with chrome and rust fenders, balloon tires. \$8. Also, Coldspot refrigerator, 12 cu. ft., single door with lg. freezing compartment. 12 yrs. old but in good cond. & clean. Also football equipment, size 12, incl. helmet, shoulder pads, pants, & socks. AT 6-8807.

MATTRESS & COIL SPRING - Full size, very good cond. \$25. HR 3-9527.

BEAGLE PUPS - AKC registered, 9 weeks old. The perfect pet as they are as much at home in the living room as in the woods. Mac-Titus, Ext. 439 or 281-9559.

SKI RACKS - (hold 4 pairs) for VW sedan or convertible. \$6 for both or \$3 each. P. Lieberman, Ext. 7732.

BAND SAW - Power King with stand, motor, and spare blades, very good cond., \$75. Also Craftsman Jig saw with stand, motor, and blades. Very good cond., \$35. Both for \$100. Bob, Ext. 2315.

HI-FI EQUIPMENT - Amplifier and FM tuner, mono. Knight KM-20 18 watt amplifier, \$25. Lafayette LT 80B FM tuner, \$25. Good cond. Ext. 2735.

EXHAUST FAN - ¼ hp, 18" blade, with frame, louvers, & BX cable, cost \$85 6 years ago. Asking \$8.50. Also Roto-Broil rotisserie, hardly used, asking \$5. Whitey, Ext. 7791.

SNOW TIRES - 670x15, mounted on Studebaker rims, \$20. Ext. 639 or LT 9-0435 after 5:30.

GAS STOVE - 36" Hardwick, \$25. M. McKeown, Ext. 480 or AT 6-1169.

BABY CARRIAGE - Wheels may be taken off and upper part used as car bed. Ext. 7726.

FURNITURE - Bedroom, living room, bunk beds, Early American. Folding bed, dinette, 2 night tables, very good cond. SE 2-3021.

FOR RENT

BOAT TRAILER - Can handle up to 20' boats. Ext. 2304 or GR 5-7275 after 6.

APARTMENT - Furnished, with all utilities incl. In Selden 10½ miles from Lab. SE 2-4147 after 5.

APARTMENT - 2½ room modern apartment, unfurnished. Heat & hot water incl. in \$85 per month rent. Heather Drive, Remsenburg. Ready for occupancy. GR 5-7046 after 5:30.

HOUSE - 3 bedroom duplex, \$100 per month not incl. utilities. If children in family, prefer school age. Sound Beach on North Shore. SH 4-3857.

WANTED

HOME - For 2 kittens, calico and strawberry blond. Tuthill, Ext. 2521 or HR 3-5585.

MODEL TRAIN SET - Used. "027" gauge. J. Godel, Ext. 593.

GIUITAR - In good cond. Harbottle, Ext. 2267.

HOME - For kittens. WA 9-6063 evenings.

CARPOOLS

DRIVERS - Wanted for existing carpool from Port Jefferson area. 1 or 2. R. Butera, Ext. 370 or P. Klotz, Ext. 7778.

RIDE - Wanted from South Country Road, Brookhaven. V. Neill, Ext. 325.

DRIVERS - Interested in new members for existing carpool or joining established carpool from Queens-Nassau area via Long Island Expressway. S. Biemer, Ext. 2800.

SOLUTION TO CHESS

Black and White play a good end game, but White got the final thrust and win.

- | | |
|-----------------|-------------------------------|
| 1. P-Q7 | 1. B-B3 |
| 2. P-R6 | 2. N-N5. This |
| | move is to get to B3 to watch |
| | that queen's pawn, while the |
| | bishop stops the rook's pawn. |
| 3. P-Q8 (queen) | 3. BxQ |
| 4. B-Q4 | 4. N-Q6 check |
| 5. K-B3 | 5. N-B5 |
| 6. KxN | 6. B-N4 check |
| 7. K-B5 | 7. BxP |
| 8. B-B2 check | 8. K-R4 |
| 9. P-N4 mate | |