

the Bulletin Board

VOLUME 18, NUMBER 2

Published by the BNL Personnel Office

OCTOBER 27, 1964

ELECTION DAY WORKING HOURS

The normal working hours for the Laboratory on Election Day, Tuesday, November 3, 1964, will be from 8:30 a.m. to 3:00 p.m. However, employees working this schedule will be paid for the regular day. Supervisors of employees in positions which require full 8 hours' service will schedule two hours in addition to the regular shift schedule but will not require the two additional hours to be worked.

Time cards for employees working the normal Election Day schedule will show 1500 as their time out. All time cards will show time actually worked and "E" will be entered in the Remarks column. Consequently, the two hours of time off for voting purposes will be at straight time pay for all employees.

NOTICE FROM PAYROLL

Friday, October 30, is the scheduled pay day for weekly and monthly employees. However, in order to facilitate the cashing of payroll checks at the on-site Peoples National Bank, the weekly employees' checks will be distributed at the Bank on Thursday, October 29 and the monthly employees' checks will be distributed on Friday, October 30.

The Bank hours will be:

Thursday, Oct. 29

9:45 a.m. to 12:00 noon

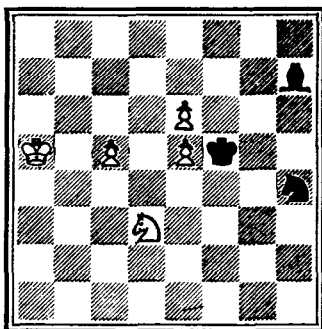
12:30 p.m. to 4:00 p.m.

Friday, Oct. 30

10:00 a.m. to 3:00 p.m.

CHESS PROBLEM

In this week's problem, White has to queen a pawn in order to win. Black can stop the pawns and then is in for a big surprise. White to move and win. Solution elsewhere in THE BULLETIN BOARD.



SIXTH ANNUAL BERA ART EXHIBIT OPENS WEDNESDAY, NOVEMBER 4



"Staircase," by Morris Kantor

Works of art by fifteen twentieth century artists, on loan from the Bertha Schaefer Gallery of New York City, will make up the sixth annual BERA art show, which opens in the Exhibit Hall on Wednesday evening, November 4. For this show, the BERA Art Committee has attempted to include works from a wide variety of trends in art.

Among the well-known artists to be represented are Richard Baringer, William Clutz, Balcomb Greene, Marsden Hartley, Morris Kantor, and John Von Wicht. The young Japanese Aiko Miyawaki will show two works in oil and marble dust on panel. Another artist, Sue Fuller, is represented by geometric compositions in string. The works of four sculptors included in the exhibit will also span a wide spectrum of artistic thought.

A buffet supper at which Miss Schaefer will be present will be served at the Brookhaven Center at 6 p.m. on the opening night. Those wishing to attend should make their own arrangements.

At the opening, Miss Schaefer will discuss informally the various works of art on exhibit. It is hoped that some of the artists will also accept the invitation to attend the opening.

The Art Exhibit will be open on weekdays through Wednesday, November 11, with hours from 11 a.m. to 5 p.m. On the days of the three Pegram Lectures, Friday, November 6, Monday, November 9, and Wednesday, November 11, it will also be open during the evenings, from 7:30 to 8:30 and for an additional hour following the end of each lecture.

NOTES ON OPEN HOUSE

As announced in last week's BULLETIN BOARD, an Open House for all BNL employees and their families is planned for Thursday, November 5, between the hours of 3:00 p.m. and 7:00 p.m.

Because the aim of Open House is for employees and their families to relax and see as much of the Laboratory as they like and when they like, the do's and don't's for the afternoon will be kept at a minimum. The information you'll need in order to plan your program is given below.

To date, the list of major research facilities that will be open for visitors is as follows:

Graphite Reactor (701)	Reactor Physics (135)
Parts of the Cosmotron (902)	Critical Assembly Facility (525-26)
Metallurgy Building (480)	Instrumentation & Health Physics Laboratories (535)
Hot Laboratory (801)	Calibration Laboratory (348)
High Intensity Radiation Devel. Lab. (528)	Meteorology Laboratory (51)
Nuclear Engineering Buildings (197 & 815)	Parts of the Medical Research Center (490)
AGS East Experimental Building (912)	Cyclotron & Van de Graaff (901)
Biology Building (463)	
Physics Building (510)	

Many areas that are not named above will also be open, so that most employees will be able to show members of their families their own places of work. (Please note, however, that the High Flux Beam Reactor and the Computer Center **cannot** be visited during Open House.) Personnel will be on duty in each of the locations to answer questions and direct visitors. Of course, employees themselves are asked to exercise caution and restraint, especially when accompanied by their children. Please keep them close at hand and far away from tempting buttons, controls or gadgets that shouldn't be touched. All "no smoking" signs should be carefully observed.

Maps and additional Open House guidance will be available at a special information desk in the Brookhaven Center. The Center will be open from 3:00 p.m. on, with plenty of room for relaxing and enjoying the refreshments on sale there - and don't forget that the Center serves dinner at nominal prices from 5:00 p.m. on.

For the foot-weary and celluloid-minded, films will be shown continuously from 3:00 p.m. at the Lecture Hall on Brookhaven Avenue.

Enough notes for now! Have a look at next week's newspaper to check on any new Open House developments, and plan to be on hand November 5.

SWIM CLASSES TO START WEDNESDAY, NOVEMBER 4

Adults - Wednesday, November 4
Children - Friday, November 6

DIVERS' CLUB TO HOLD OPEN HOUSE AT POOL

On Monday night, November 2nd, at 8 p.m., the Brookhaven Divers' Club will hold an open house at the BNL pool. The occasion is to open the 1964-65 winter season of the Club. All present Club members, as well as employees and their families interested in Club membership, are invited to attend. The pool will be open for members' and guests' use with diving equipment. Persons interested in observing this thrilling sport first-hand should have an enjoyable evening. At the present time the Club is soliciting new members, and experienced divers will be on hand to answer questions.

Remember the date, Monday, November 2nd, at 8 p.m., BNL pool. No charge for pool use.

FOLK SING

There is a weekly folk sing each Wednesday evening at 8:00 p.m. in the Recreation Hall. Bring your banjo, guitar, or voice for a night of folk songs from all over the world.

Arrivals and Departures

WELCOME TO BNL

APPLIED MATHEMATICS	
Ilse H. Perlman	Ext. 2444
BIOLOGY	
Bill Greenberg	359
Mary H. Hines	441
CHEMISTRY	
John S. Butterworth	625
C. Brian Cragg	2828
Priscilla G. Garland	
PHYSICS	
LAZER RESNICK	7656

RECENT DEPARTURES

MEDICAL	
Norma R. Podlaski	
NUCLEAR ENGINEERING	
Edward E. Kiefer	

BERA FILM SERIES

Due to Visitors' Days and Open House, the next BERA Film Series presentation has been postponed until Thursday, November 12.

The film schedule for the coming weeks will be published in next week's BULLETIN BOARD.

SEPARATE TABLES

On Thursday evening, November 19, at 8:30 p.m., the curtain will rise on the next BNL Theatre Group's production, "Separate Tables." For several weeks the cast and crew have been in earnest rehearsal. There are still a few weeks to go. Those of you who have seen any of the rehearsals, or remember the Broadway and film versions, already know the excitement and excellence of the play. Those of you who haven't are in for an intense and interesting evening.

This year, ticket sales are beginning early so be sure to purchase yours as soon as possible. Remember those dates: November 19, 20, and 21. Below is a list of department ticket sellers.

Directors Office	E. Murgatroyd
AGS	M. Semerjian
Applied Math.	J. Friedman
Biology	E. Hodges
Chemistry	A. Lautzenheiser - E. Sayre
Cosmotron	B. Keck
Hot Lab	M. Kinsley
Inst. & Health Phys.	G. Mansfield
Medical	M. Follenius - R. Korsos
Nuclear Eng.	L. Duvall - G. Jones
Personnel	B. Kohler
Physics	P. Fairhurst - P. Towey
Reactor	J. Kreitzberg
Recreation Office	M. Walters

OPAQUE PROJECTOR MISSING FROM
CENTER. ANYONE LOCATING IT
CALL HENRY BOOMER EXT. 2453.

RIFLE & PISTOL CLUB

The Bellock Instrument Company was defeated in a wild match which saw the BNL rifle team romp off with a 672 to 727 victory. Fine performances by John Jacobs and A. Finocchio with scores of 178 and 182 out of 200, backed up by A. Lukas' 183 and R. Domish's 184, left no doubt as to the outcome of the match. The team now has a record of three wins and no losses in the Long Island Industrial League. The next match will be held at the Merchant Marine Academy at Kings Point on October 29. Anyone interested in competitive shooting should contact P. Colombo at Ext. 624.

The monthly club meeting will be held at the Recreation Hall on November 5 at 8 p.m.

SEPARATE TABLES' WHO'S WHO



Trevor Bacon — John Malcolm

Trevor comes to Brookhaven from England and has been with the Nuclear Interactions group of the Physics Department for two years. As John Malcolm, the hard-drinking, hard-living columnist, Trevor will be making his first stage appearance. But don't let this fool you. His interpretation of the role is perfect... right down to the accent. See him November 19, 20, 21.

COOKING EXCHANGE GROUP

The third meeting of the Cooking Exchange Group will be held on Wednesday, November 4, from 3 to 5 p.m. in the Recreation Building, BNL Apartment Area. Demonstrations will be given by Margarita Sastre (pecan pie), Nimmo Sharma (Indian vegetable dish), Aldona Sehgal (beef curry and honey cake), and Martina Kuscer (Slavic potica or election day cake). All who are interested, on or off site, will be most welcome. For further information, contact Joy Johnson at SH 4-5378 or Norma Chernick, GR 5-0168.

HALLOWEEN MIXER

Several members of the Medical Department have gotten together and planned an informal Halloween Get-Together. They extend an invite to any guests who'd like to join them — old-timers, newcomers, couples, singles. Come in costume if you're in the mood — most will be wearing jeans and shirts. Bring your own liquid refreshment and mixer; ice and pretzels will be provided. For details, see your department secretary. The time is Friday evening, October 30, in the Recreation Building beginning at 8:30 p.m.

MIXED DOUBLES BOWLING TOURNAMENT

Saturday, November 14 — 3:30 p.m. — Port Jeff Bowl

Applications for the mixed doubles bowling tournament must be in by 3 p.m. on Friday, November 6.

All new bowlers are welcome — you need not be a league bowler to enter the tournament. Hurry with your entries, for only 64 teams can be accommodated. Here are the rules:

1. A team shall consist of two bowlers, one male and one female. At least one member of the team must be a BNL employee (per BERA definition).
2. The tournament shall consist of three games per bowler, bowled across six lanes.
3. Handicap (per bowler per game) shall be arrived at by using the standard BNL bowling rule which is 80% of the difference between the bowler's average and 200.
 - a. Bowlers in BNL leagues last winter season use final BNL average.
 - b. Bowlers in BNL leagues for the first time this season use BNL average as of 10/26/64. Bowlers must have bowled at least twelve games to use this average.
 - c. Bowlers not in BNL leagues this season or last, but who bowl in other leagues this season, use highest current sanctioned average as of 10/26/64. 1964 BNL final summer league averages will be accepted if none of the above rules apply. Bowlers must have bowled at least twelve games to use this average.
 - d. All others use score of first game for first game average; use scores of first two games divided by 2 for second game average; use scores of first three games divided by 3 for third game average.
 - e. Maximum handicap allowed per game for men is 70 pins; there is no maximum handicap for ladies.
4. Prizes will be based on scores plus handicaps, and awards will be given to 1st, 2nd, and 3rd place teams plus ladies' and men's individual high gross game.

Awards will consist of **Baskets** and **Bottles** of **Holiday** cheer.

The above prizes are guaranteed for the minimum number of tournament entries (30). Additional prizes will be awarded based on the number of entries in excess of 30, e.g., fourth and fifth place teams, second place ladies' and men's individual games. No ABC or WIBC prizes!

5. Team entry fee, including cost of bowling is \$5.00. Entry blank and fee must be presented at the Recreation Office not later than 3 p.m. on Friday, November 6. No entries will be accepted after the first 64 have been received. The fee is non-refundable; only in the event that the minimum number of entries is not reached will the fee be refunded and the tournament called off. Teams not present and ready to bowl at the start of the tournament will forfeit the team fee.
6. The rules of the American Bowling Congress are adopted for this tournament except as otherwise stated herein.
7. Decisions of the tournament committee will be final.
8. Matchmaker Service: Fred Hohmann, Ext. 2117, or G. Fales, Ext. 2164.

ENTRY APPLICATION

Submit to
Recreation Office

Must be accompanied by
\$5.00 non-refundable fee

1. Lady Bowler (name).....BNL Employee (yes) (no)

*Average is.....in.....League at.....Lanes

2. Man Bowler (name).....BNL Employee (yes) (no)

*Average is.....in.....League at.....Lanes

Received Recreation Office.....

— **Deadline 3:00 p.m. - November 6** —

*See Rule 3 above to determine average.

GYM CLOSED

Due to Visitors' Day and the BERA dance on November 6, the Gym will be closed for all physical activities thru November 10.

SOLUTION TO CHESS

- | | |
|-----------------------|---------|
| 1. P-K7 | 1. B-N3 |
| 2. P-B6 | 2. K-K3 |
| 3. P-B7 | 3. K-Q2 |
| 4. K-N6 | 4. N-B4 |
| 5. P-K8 (queen) check | 5. BxQ |
| 6. K-N7 | 6. N-K2 |
| 7. N-B5 mate | |

CLASSIFIED ADS**FOR SALE**

1959 VW KARMANN GHIA - Convertible in good cond. with red interior. Top 1 yr. old, r/h, seat belts, good tires. \$800. AT 6-3970 after 4:45.

1956 OLDSMOBILE - '88" Four good tires, brakes relined this month, good running cond. \$200. D. Hoare, Ext. 386 or YA 4-3848.

1957 MERCURY - 2 dr., red sedan with white top. Std. trans., good tires, mech. excel. Mike, Ext. 7734.

1957 MERCURY - \$100. H. Houtsager, Ext. 7677 or AT 6-0691.

1954 PLYMOUTH - Belvedere, faithful friend supplanted by station wagon, std. trans., r/h; rings, clutch, generator, regulator all replaced. \$100 or offer. Ext. 7652.

1953 BUICK - Roadmaster. Good cond., rebuilt motor, new brakes. \$150. Ext. 2325 or LT 9-2884.

1955 PONTIAC - V8, ps, r/h, excel. cond. \$200. R. Slavinski, Ext. 2849.

1958 JAGUAR - Sedan, \$700. Miss Pappas, SH 4-9742 after 6.

1963 SUNBEAM - Alpine convertible, wire wheels, 13,500 miles. \$1,675. Ext. 590 or GR 5-2306 after 5:30.

1961 FORD - Fairlane, white sedan, 2 doors, 6 cyl. Owner leaving Nov. 8. \$780. Perret, Ext. 407 or 281-5667 after 5.

1963 CHEVROLET - Impala Sport Coupe. Auto. trans., r/h, ps, padded dash, seat belts, 6 cyl., 13,500 mi., a black beauty. Last chance to buy at the low price of \$1,995. J. Disparti, Ext. 2389 12 to 12:30 or 281-2389 after 5.

1961 BORGWARD - Station wagon, \$750. JU 8-3551 after 6.

1961 TRIUMPH - Herald sedan, blue, 28,000 mi., snow tires, excel. cond. \$650. GE 7-8633.

1961 RAMBLER - American, blue 2 door sedan, auto. trans., r/h, just winterized. Excel. cond. Asking \$600. Available 4 to 5 weeks after GM strike over. A. Woodbury, Ext. 2551.

BEAGLE PUPS - AKC registered, good bloodlines, many champions in pedigree. Reasonably priced. Mac, Ext. 439 or 281-9559 after 5:30.

STEREO RECORD PLAYER - Magnavox, perfect cond. Would make wonderful Christmas gift. \$110. M. Keller, Ext. 7654.

RIFLE SHELLS - 32 cal. 170 grain. Remington, Peters, & Winchester. List \$4 per box. Sell for \$3 per box or 7 boxes for \$20. Tim, Ext. 403 or 2331.

ERCOUPE 415C - All metal, new paint, 290 hrs. SMOH, full panel, VHF transceiver, Narco VHT-1 OMNI. Equipped for night flight. AT 9-0822.

TWO TIRES - New 800x15 tubeless, mounted on 1955 Cadillac with power brakes, steering, windows & front seat plus r/h & defroster. Bring your license plates & \$75 & drive it home. J. Ryan, Ext. 451.

SNOW TIRES - 2 Nytex tubeless custom cushion type w/w 4-ply tires, 750x14. Used 7 months. \$10. 878-2019.

SERVICE STATION EQUIPMENT - Incl. elec. cash register, adding machine, hydraulic floor (axle) jack, auto. gasoline pump nozzles and much more. Must sell. cheap. G. Johnson, Ext. 7112 or 878-1095.

BEDROOM FURNITURE - 10 pieces. Double bed with Englander mattress & box springs, chest, dresser, vanity, 2 night tables, 2 mirrors. Top grade mahogany. Excel. cond. \$200. M. Alvarez, Ext. 288 or AT 6-8645.

FREEZER - 1964 Marquette, commercial freezer for home use. 16 cu. ft. 85016 chest. Excel. cond., 7 mos. old. Must sell. Orig. price \$600, best offer over \$250. AT 9-0844.

SPEAKER SYSTEM - 12" Capehart woofer & University tweeter in light mahogany stained plywood cabinet. Can be used in corner or along wall. With crossover & balance control. \$40. D. Christman, Ext. 7731.

FUEL PUMP - \$1. Also generator, \$4, carburetor, \$3. All from 1953 Buick in very clean cond. Ext. 622.

STEREO SPEAKER SYSTEMS - Each has 15" woofer mounted in sand-loaded bass reflex enclosure, 8" mid-range & 3" tweeter both in infinite baffle. X overs: hand wound, air gap coils, oil capacitors, T pads, no electrolytics. WE 8-3567 after 4 Mon. - Fri.

AIR CONDITIONER - Sears, 1 yr. old, 8500 BTU. \$100. H. Houtsager, Ext. 7677, 7684, or AT 6-0691.

SKI RACK - Volkswagen. Holds 2 pairs. \$3. P. Lieberman, Ext. 7732.

FOR RENT

HOUSE - One year old in N. Patchogue. 6 room ranch with tiled bath, 3 bedrooms, full basement, attached garage, oil hot water heat, 100x256 plot. Nice area. \$160 per mo. J. Stoffel, Ext. 7678 or AT 9-3648 after 6.

APARTMENT - Furnished, 3 rooms in East Patchogue. AT 6-9524 after 6.

HOUSE - Charming, completely furnished home overlooking Shinnecock Bay. 1½ baths, hot water heat, all elec. kitchen, 2 car garage, 30 min. from Lab. Ext. 2596 or LT 9-1614.

ROOM - Lg. furnished room and bath with private entrance. Light cooking. 1 or 2 women. Centereach. JU 8-7665 or JU 8-9473.

APARTMENT - 3 rooms & bath in Riverhead. Furnished, hi-fi, TV, all utilities incl. \$125. per month. PA 7-1322 after 6:30.

APARTMENT - Furnished. Also furnished rooms. 203 Bay Avenue, Patchogue. GR 5-1371.

APARTMENT - In Patchogue, 3 rooms & bath. Unfurnished. GR 5-2084.

HOUSE - 3 bedroom duplex. \$100 per month. Utilities not incl. If children in family, prefer school age. Sound Beach, N. Shore. SH 4-3857.

APARTMENT - 5 rooms & bath, private entrance, 1 car garage, approx. 10 min. from Lab. \$110 per month incl. heat. YA 4-6152 after 5.

ORCHESTRA - Wayne Foster's orchestra featuring Herman Stenzler will be available Friday, November 6, from 9:30 p.m. on. \$1.50 each insures you a good buy.

WANTED

HOUSE - Wish to buy 3 bedroom house within 30 minutes of Lab. Good residential area desired. GR 5-8426.

7 TO 10' HYDROPLANE - Preferably with controls and steering. AT 6-1326 after 6:15.

GIRL - Needed once a week to clean apartment. Ext. 519.

HOUSE - Unfurnished or partly furnished 3 or possibly 2 bedroom house to rent in Bellport, Brookhaven or East Patchogue. S. James, Ext. 7795 or 2803.

RELIABLE WOMAN - To care for 2 children, weekday mornings 8:30 to 12:30. BNL apartment area. Ext. 7725.

PUMPKINS - Any size or shape. To be used in decorating for International Harvest Moon Ball on Nov. 6. E. Collins, Ext. 2812.

DANCERS - To enjoy the International Harvest Moon Dance.

CAR POOLS

RIDE - Wanted from S. Country Road, Brookhaven. V. Neill, Ext. 325.

RIDE - Wanted from corner of Hawkins Ave. and Portion Rd., Lake Ronkonkoma. Mrs. Phillips, Ext. 301-14.

RIDER - Wishes to join carpool from Blue Point. M. Keller, Ext. 7654.

DRIVERS - Wanted for carpool from Stony Brook and East Setauket area. B. Wilber, Ext. 2409.

JOIN - The caravan to BERA's International Harvest Moon Dance on Friday, Nov. 6. See you there!

CAST YOUR  **WITHOUT FAIL**