

the Bulletin Board

VOLUME 18, NUMBER 4

Published by the BNL Personnel Office

NOVEMBER 10, 1964

FORTY-FIRST BROOKHAVEN LECTURE



By: DONALD D. VAN SLYKE
Medical Department

Title:
Gases of the Blood

Lecture Hall — Wed., Nov. 18 — 8:00 p.m.

The metabolism of body cells requires a source of oxygen gas and a means of eliminating the carbon dioxide that is produced. In higher organisms, this exchange of gases between tissues and the outside atmosphere requires an intermediary transport through the blood. The way in which the blood carries out this function that is essential for life has been elucidated by many eminent scientists, beginning with Lavoisier's work in the late eighteenth century.

Dr. Van Slyke's laboratory has made pre-eminent contributions to this field in recent decades, and the standard apparatus for blood-gas work is known by his name. The latter portions of this work have been carried on at Brookhaven's Medical Department, whose establishment is due in large measure to Dr. Van Slyke. Hence it is particularly appropriate that in the forty-first Brookhaven Lecture, Dr Van Slyke will review the historical background of present knowledge of blood gases, including some of the latest applications to physiology and therapeutic medicine.

A buffet supper (\$2.75) will be served at the Brookhaven Center before the lecture, beginning at 6:00 p.m. Reservations should be made at least one day in advance by calling Ext. 2302 before 5:00 p.m. or Ext. 2453 in the evenings.

AUI ANNUAL MEETING

The annual meeting of the Board of Trustees of Associated Universities, Inc. was held at the National Radio Astronomy Observatory, Green Bank, West Virginia, on October 16, 1964. At the meeting the following actions were taken on matters which are of general interest:

The following were re-elected members of the Board of Trustees, to serve until the annual meeting in October 1967:

RICHARD H. CHAMBERLAIN.....University of Pennsylvania
PETER T. DEMOS.....Massachusetts Institute of Technology
VAL L. FITCH.....Princeton University
LEO GOLDBERG.....At-large
ALLYN W. KIMBALL.....The Johns Hopkins University
C. HAMILTON SANFORD.....Yale University
LAROY B. THOMPSON.....University of Rochester

The following were elected Annual Trustees, to serve until the annual meeting to be held in October 1965:

FRED T. HADDOCK — WILLIAM D. McELROY — THEODORE P. WRIGHT

The following officers were re-elected to serve until the annual meeting to be held in October 1965:

Treasurer.....JAMES S. ALEXANDER
Assistant Treasurer.....JOSEPH F. LORD
Controller.....LEWIS R. BURCHILL
Secretary.....CHARLES F. DUNBAR
Assistant Secretary.....N. PETER RATHVON, JR.

Dr. Carl F. Floe, of Massachusetts Institute of Technology, was elected Chairman of the Board of Trustees, to serve until the annual meeting to be held in October 1965.

The following persons were elected members of the Executive Committee, to serve until the annual meeting to be held in October 1965:

ERNST W. CASPARI.....University of Rochester
CARL C. CHAMBERS.....University of Pennsylvania
CARL F. FLOE.....Massachusetts Institute of Technology
LEO GOLDBERG.....At-large
RALPH S. HALFORD.....Columbia
ERNEST F. JOHNSON.....Princeton
ALLYN W. KIMBALL.....The Johns Hopkins University
FRANKLIN A. LONG.....Cornell
C. HAMILTON SANFORD.....Yale University
WILLIAM H. SWEET.....Harvard University

On December 1, 1964, Mr. Theodore P. Wright will assume the Presidency, for a term to end at the annual meeting in October 1965. Mr. Edward Reynolds will remain President until Mr. Wright takes office. The latter, formerly Vice President for Research at Cornell University and President of Cornell Aeronautical Laboratory, was a member of the Board of Trustees from July 1948 through October 1961, and so has the advantage of being thoroughly conversant with Brookhaven National Laboratory and the National Radio Astronomy Observatory. The Chairman of the Board and the President are ex officio members of the Executive Committee. A complete list of the trustees and officers will be made available after Mr. Wright takes office at the beginning of next month.

BERA CONCERT SERIES

THE JUILLIARD STRING QUARTET

Tuesday, November 17 — 8:30 p.m. — The Brookhaven Center

SEPARATE TABLES' WHO'S WHO



Judy Herschman — Jean Tanner

Consider the dark-eyed Jean Tanner.. a Bohemian, a book-burner, a saccharin-sweet mother. Now consider the darkly attractive Judy Herschman. . . a wife (to Arthur Herschman at Physical Review), a mother (of two — one old, one new), a comedienne ("Thurber Carnival"), a tragedienne ("House of Bernarda Alba"), and a really great gal (writer's opinion). Now what happens when Judy becomes Jean? Fireworks! . . . Bring goggles!.....November 19, 20, 21.

A MESSAGE FOR THE LABORATORY

Brookhaven has received a telegram, dated October 24, 1964, which reads as follows:

"I commend the Brookhaven National Laboratory on its 15th annual Visitors' Day for all you have done to make the benefits of atomic energy available to mankind. You offer dedicated leadership to our scientific community. The beneficial use of atomic energy is the great challenge and hope of our age. My best hopes for a successful and informative day.

Kenneth B. Keating
United States Senator"

MIXED DOUBLES BOWLING TOURNAMENT

3:30 p.m. — Port Jeff Bowl — Sat., Nov. 14

Enough entries in the BERA mixed doubles bowling tournament have been received to guarantee numerous prizes consisting of baskets and bottles of holiday cheer.

Don't be late! Register at the desk when you arrive. The tourney begins at 3:30 p.m. **sharp**. Please come early.

NOTE: There will be no practice bowling on tournament lanes after 3 p.m.

SEPARATE TABLES' WHO'S WHO

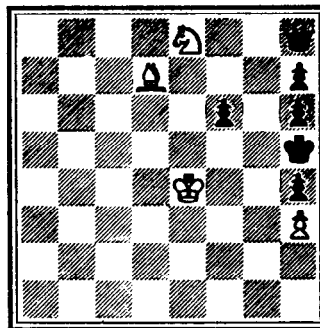


Jerry Friedman — Charles Stratton

Jerry is one of those rare persons who combines talent and ambition and carries them both off par excellence. He has been with the Applied Math group for four years and has recently made his stage debut in "A Thurber Carnival" at BNL. Jerry is also a published musician — you know, the rhythm and blues kind — and has composed a wealth of beautiful songs for anyone who'll listen. His portrayal of Charles Stratton captures the gamut of characterization perfectly: from eccentric young pre-med student to determined defender of truth. Only Jerry could do it so well. See him November 19, 20, 21.

CHESS PROBLEM

In this week's problem, it is knight plus bishop against queen, but notice the innocent-looking white pawn in the diagram and keep an eye on it. White to move and win. Solution elsewhere in the BULLETIN BOARD.



ERRATA

Rumor has reached us that Pat Towey does exist. We are hesitant to believe this and challenge her to appear on stage at the Theatre on November 19, 20, and 21. Those interested in unravelling this hoax, be there at 8:30 p.m. sharp.

SEPARATE TABLES' WHO'S WHO



Judith Levine — Lady Matheson

This is Judith's first appearance with BNL's theatre group. Prior to this, she has been a member of the Henry Street Players and has appeared in such shows as "Oklahoma," "The King and I," and "The Mikado." She has adapted and directed a production of "Dial M for Murder" for summer camps. Obviously, this girl is no beginner. As Lady Matheson, she has been nick-named Minnie Mouse by the cast. Why? Well, you see . . . there's this old biddy in the play who is a tower of indecision and finally, when the great showdown occurs, she . . . well . . . see her and find out. A fine talent. November 19, 20, and 21.

HAPPY HARVEST MOONERS

Over four hundred gathered at the Gymnasium last Friday night for the BERA dance and went home smiling after a lively and enjoyable evening. There were twist, limbo, and waltz contests to highlight the festivities in the gaily-decorated and well-disguised Gymnasium, as well as door prizes which offered a basket of international goodies and tickets to "Separate Tables."

The musical entertainment provided by Joey Ames, pinch-hitting for the bed-ridden Herman Stenzler, had them dancing and applauding all evening. Joey, who was scheduled to appear at the St. Moritz in the city, won the crowd after his first set.

The attendees and BERA have a round of applause for the Personnel Division which presented the dance, its Chairman Monroe Petty, its Associate Chairman Gene Collins, its M.C. Joseph Washburne, and all its members who helped make the dance the success it was.

LIGHTHOUSE FOR THE BLIND EXHIBIT AND SALE

The Lighthouse Industries of the New York Association for the Blind will again this year hold an exhibit and sale at the Laboratory. The sale is scheduled for Tuesday and Wednesday, November 17 and 18, between the hours of 10:00 a.m. and 4:00 p.m. in the Exhibit Hall.

Orders for toys, household items, gifts, etc., will be taken without deposit during the exhibit, with delivery promised approximately two weeks after. The proceeds from these purchases are used to further the important work of the Lighthouse in training blind workers and promoting public understanding of the causes of blindness.

FOLK DANCING NEXT WEEK

Don't forget! There's folk dancing next Monday, November 16, from 8:00 to 11:00 p.m. at the Recreation Hall. Everyone interested - no matter whether you're a beginner or a seasoned folk dancer - is welcome to participate.

PERSONNEL SERVICES

Recreation Office - 3 Center Street
Daily 9:00 a.m. - 1:00 p.m.

Rental Library

A new selection of books has arrived for your reading pleasure. Among them are:

Buddwing	E. HUNTER
Convention	F. KNEBEL & C. BAILEY
First Papers	L. HOBSON
Herzog	S. BELLOW
The Man	I. WALLACE
The Night in Lisbon	E. REMARQUE
The Rector of Justin	L. AUCHINCLOSS
The Big Man	H. TAYLOR
The Commissioner	R. DOUGHERTY
The Dangerous Islands	A. BRIDGE
The Whistling Zone	H. KUBLY
Tomorrow's Miracle	F. SLAUGHTER

Stocked Sale Items

Among items stocked for sale are: Royal Canadian Air Force Exercise Plan books, Adult Physical Fitness pamphlets, batteries, film, flashbulbs, film processing service, flashlights, T.V. tubes (tube tester available), athletic socks, tennis balls, and badminton birds.

SOLUTION TO CHESS

- | | |
|---------------|---|
| 1. K-B5 | 1. Q-B1. This move is a must. Q-N1 would lead to NxP check. |
| 2. N-N7 check | 2. QxN |
| 3. B-K8 check | 3. Q-N3 check |
| 4. BxQ check | 4. PxB check |
| 5. KxP | 5. P-N4 |
| 6. K-B5 | 6. P-N5 |
| 7. PxP mate | |

1964-65 BERA CONCERT SERIES

The concert series this year will start on Tuesday, November 17, with a performance by the Juilliard Quartet. (Their program will include Schubert's "Death and the Maiden.")

Subsequent performances will be by the New York Chamber Soloists on December 10, Mieczyslaw Horszowski on January 26, the Festival Winds on February 23, and the Renaissance Quartet on March 25.

There are also other indications that it will be particularly advantageous to have a series ticket this year.

Concert series tickets may be purchased from the following persons: M. Perlman, Chemistry; E. Courant, AGS; D. Alburger and S. Yamamoto, Physics; R. Straub, Medical; A. Aronson, R. Wiswall, J. Stehn, and M. Hillman, Nuclear Engineering; M. Wolfsberg, Biology; E. Gottesfeld, Applied Mathematics; M. Walters, Recreation Office; and V. Sayre, Director's Office.

Admission prices are as follows: Series Adult, \$10.00; Series Child (under 18 years), \$5.00; Single Admission Employee, \$3.00; Single Admission Child, \$1.50; Guest, \$3.50.

Arrivals and Departures

WELCOME TO BNL

AGS	
John M. Nicolellis	Ext. 311
David S. Robertson	2992
CHEMISTRY	
Elizabeth Haynes	330
Sandra Lee	611
Ross McPherson	625
Elizabeth G. Moorhead	614
INSTRUMENTATION & HEALTH PHYSICS	
Charles J. Abbene	
MEDICAL	
John A. Lenhard	301
NUCLEAR ENGINEERING	
Lowell Yemin	624
PLANT MAINTENANCE	
Charles J. Schmitz	2120
Joseph J. Zeneski	2120

BERA FILM SERIES

Nov. 12	The French Game (comedy)
Dec. 3	Hand in the Trap (Torre Nilsson)
	17 Odd Obsession (Japanese)
Jan. 7	No Exit (Sartre)
	21 Purple Noon (Rene Clement) Bonus Night
Feb. 4	The Third Lover (Claude Chabrol)
	18 The Connection (Shirley Clarke)
Mar. 4	Knife in the Water (Polish)
	18 The Given Word (Brazil)
Apr. 1	The Suitor (Pierre Etaux)
	15 Raisin in the Sun (Sidney Poitier)

CAMERA CLUB

A meeting scheduled for 8:15 p.m. Thursday, November 19, at the Recreation Building will feature the showing of color slides, good or bad, furnished by those attending the meeting. For additional information, call J. Speirs on Ext. 7784.

FIFTEEN YEARS AGO

The Laboratory's total staff had increased to 1400 (it is now 3200). Included among our new arrivals were Dr. and Mrs. Maurice Goldhaber, Edward Dexter, Richard Wiswall, Joseph Lucas, Walter Freese, and Norman Still.

Construction activities reached a peak when, in addition to completion of the reactor, there were under construction simultaneously the laboratory wings for the reactor, the hot laboratory, the office wing of the cosmotron, the new building for the cyclotron and electrostatic accelerator, the new biology building and the wing for the high pressure cloud chamber.

The New York Yankees under the direction of Casey Stengel beat the Brooklyn Dodgers four games to one in the World Series, while the Philadelphia Eagles were the National Football League Champions for the third time in four years.

BERA ART SHOW WELL RECEIVED

The Sixth annual BERA Art Exhibit, featuring works on loan from the Bertha Schaefer Gallery in New York, has drawn warm praise from a record number of visitors.

The last opportunity to see the show at the Exhibit Hall will be during the hour before and the hour after the final Pogram Lecture on Wednesday, November 11.

CLASSIFIED ADS

FOR RENT

HOUSE - 3 bedroom duplex on North Shore. \$100 per month, utilities not included. Sound Beach, 20 min. from Lab. SH 4-3857.

APARTMENT - Cozy furnished 3½ rm. apartment. Private entrance, newly decorated, 2 blocks from village. GR 5-9287.

APARTMENT - 6 beautiful rooms, walk to village. In Patchogue. GR 5-4362.

FOR SALE

1961 VOLKSWAGEN - Leather interior, low mileage, roof rack, excel. cond. Ext. 423 or AT 6-0626 after 6.

1963 PONTIAC - Grand Prix, fully powered, auto. trans., r/h, showroom cond. \$2,400 or best offer. AT 6-9260.

1961 MERCURY - Monterey, auto. trans., r/h, excel. cond. \$925 or best offer. AT 6-9260.

1957 DESOTO - 2 door hardtop, auto. trans., ps, new tires (4), Body fair, good mech. cond. \$250. Ext. 2800 or GR 5-8658.

1957 MOTOR CYCLE - Zundap (German), 250 cc, new coil, condenser, and points, set up for trail riding and scrambling. \$100 or best offer. Ext. 2330.

1952 MG TD - Classic, removable hard top, rebuilt engine, excel. running cond., good body, 28,000 miles on engine. AT 6-0651 after 5.

1959 FORD - Retractable hardtop, T-Bird engine, r/h, w/w's, \$850 firm. GR 5-9024.

1950 CHEVROLET - Good transportation, r/h, \$75. GR 5-9024.

1957 FORD - Station wagon, 4 door, r/h, 8 cyl., auto. trans. Good rubber, new snow tires. Inspected. \$350. YA 4-3522.

1957 RAMBLER - Station wagon, 4 door reclining seats, r/h, 6 cyl., auto. trans., new brakes, new tires, inspected. \$375. YA 4-3522.

1955 OLDSMOBILE - 4 door Holiday. Good running cond. \$100. GR 5-5290.

1953 STUDEBAKER PICK-UP TRUCK - 1/2 ton, \$115. JU 8-5833.

1957 BUICK - Estate wagon, gray, 4 door, r/h, pb/ps, very good cond., can be seen at the Cabinet Shop or call 325-0567.

1956 OLDSMOBILE - "88," 4 good tires, brakes relined this month. In good running cond. \$200. D. Hoare, Ext. 386 or YA 4-3848.

1937 FORD - Stock car with 292 engine, needs work. \$125. Also go kart, 3 1/2 hp motor, \$25. Ext. 2304 or 281-7665.

1956 CHEVROLET - 4 door sedan, auto. trans., needs shocks; otherwise excel. cond. 751-2069 mornings before 10.

1952 PONTIAC - 2 door coupe, r/h, auto. trans., extra rim, snow tires, good upholstery. Excel. second car. \$75. W. Lundgren, Ext. 686 or JU 8-4925.

1964 VOLKSWAGEN - Deluxe sedan, green radio, defroster, w/w, shoulder safety belts, 2500 miles, full warranty. \$1,500. PA 7-2223.

1964 BUICK SPECIAL - 2 door, V6, std. trans., r/h, back-up lights, 17,000 miles. Asking \$1,800. F. Dimino, Ext. 2410 or HR 3-5304 after 6.

1954 FORD PICK-UP - 1/2 ton, V8, new main seals front & rear, points & plugs & rear tires. Heavy duty springs, body diamond steel lined. Asking \$400 or best offer. F. Dimino, Ext. 2410 or HR 3-5304 after 6.

1963 CHEVROLET - Impala Super Sport Sport Coupe. White with black interiors, padded dash, bucket seats, seat belts, 4 speed std. trans. floor console, 340 hp, 409 engine with positraction. \$2200. H. McNeill, Ext. 2556 or JU 5-7988 after 6.

22' SEA SKIFF - Verity, Lapstrake, shelter cabin, 109 hp Gray Marine engine, 4 wheel trailer incl. \$695. Ext. 2201 or LT 9-2737.

OUTBOARD MOTOR - 7 1/2 hp long shaft, Mont. Ward. Running cond. First \$15 takes it. Walt, Ext. 2457.

27' CABIN CRUISER - Chris Craft, sleeps 5. \$2,800 or willing to trade for smaller boat with trailer. H. Houtsager. Ext. 7677 or AT 6-0691.

21' SLOOP - Chesapeake Bay. Stainless steel rigging, anchor, 150' lines. May be seen anytime at S. Country Shores Marina. In water. Will store for winter. \$400. B. McKee, Ext. 7112.

RANCH - 3 bedrooms on 95x100 fully landscaped plot in Bellport. Storms & screens on sides & rear, jalousie windows in front, w/w carpet in living room & foyer. Venetian blinds throughout. City water & gas, 18x10 breeze-way. \$11,000. AT 6-9112 after 6.

HOUSE - 7 rooms, 3 bedrooms, storms and screens, 22x20 patio with fireplace, fruit trees, quiet location, 1 acre plot. \$10,000. 878-1468 after 6.

BOWLING BALL - Brunswick mineralite with Mexican leather bag. \$25. Donnelly, Ext. 2254 or SH 4-3630.

MODEL MOTORING CAR SET - HO scale, transformer, 2 speed controls, 3 cars, straight & curve track, 2 switches, cross road, 4'x8' table. \$35. Ext. 2330.

GAS STOVE - 36", good cond. \$20. M. McKeown, Ext. 480 or AT 6-1169.

FRAGRANT HERBS & SCENTED GERANIUMS - Rooted cuttings. Some rare, some ordinary, some culinary. All will grow to be attractive plants. Supply limited, so will also take orders for spring cuttings. T. Van Dervoort, Ext. 2884.

MOVIE CAMERA - 8 mm. Canon: Cine canonet 8 with zoom lens, elec. eye (auto. and manual), power filming system, single reflex viewfinder & battery checker. Has trigger grip and wrist strap and leather carrying case. Used 3 mos. \$95. Oji, Ext. 2849.

MISCELLANEOUS - Volkswagen snow tires mounted on VW wheels, Austrian Semperit, 640x15 used 4 mos. Good cond. Cost \$72, price, \$35. Language course, basic German, 40 lessons on 4 33 rpm records with text books in new cond., \$5. Auto gauges, oil pressure 0-80 lbs. & ammeter 30-0-30 amps, \$5 for both. Tube Tester, Sencore "Mighty Mite" 2 yrs. old with new set up manual, checks all tubes. \$45. P. Warner, Ext. 425 or RA 8-0273 evenings.

RIDING LAWN MOWER - Sears, 1 year old. \$100. H. Houtsager, Ext. 7677 or AT 6-0691.

MISCELLANEOUS - McIntosh 30 watt power amplifier & monophonic preamplifier. Thorens TD-124 turntable with Grado stereo arm & Stanton 481 stereo cartridge, never used. Also .001 stylus. Ext. 2991.

21" TV - Console. \$35. J. Humbert, Ext. 2152 or AT 9-0829.

FUR COAT - Lady's full length brown beaver, size 12. \$250. Also ski boots, double, ladies size 8B used 3 times, excel. cond. Vacuum cleaner, Electrolux with attachments. Old but in good cond. \$10. GR 5-3845.

RADIO TRANSMITTER - C.B. complete base & mobile, includes poly-comm. SR "23" & Pierce Simpson companion transceivers compl. with 115 V & 12 V P.S. mtg. brackets and power cables. Also incl. 20' base station whip with radials, 96" fiberglass mobile ant. with spring & bumper mount, also all ant. cables, connectors, and base ant. mount. \$450. or best offer. F. Dimino, Ext. 2410 or HR 3-5304 after 6.

DIVING FLIPPERS - 1 pair. P. Lieberman, Ext. 7732.

ACCORDION - 40 bass Hohner instrument in beautiful cond. \$40. YA 4-3848.

ELECTRIC DRILL - 1/4" Shopmate. Has geared chuck, sanding arbor, grindstone and bench stand. Sev. years old but in good cond. Best offer over \$5 received within 1 week. S. Ogden, Ext. 2532 or 325-0585 nights.

HOUSE - 8 years old in Brookhaven. 5 bedrooms, 2 full baths, attached 2 car garage, enclosed porch, excel. heating & wiring, 165x125' plot, good area. \$21,000. C. Daley, Ext. 2748 or AT 6-1307.

HOUSE - For sale or rent. 6 rooms, bath, re-decorated, double garage, near schools and stores. Patchogue area. GR 5-8426.

LOT - 1 acre, 140' front on West Bartlett Rd., Middle Island. Large trees. A. Muscarella, Ext. 7677.

HOUSE MOVING SALE - Thurs. & Fri., Nov. 12 & 13 from 4 to 8 p.m. at 454 Auburn Ave., Shirley. 2 blocks west off Wm. Floyd Pkwy. at Yaphank-Manorville Rd. Shop tools, 16 mm movie projector, photo enlarger, 36" circular wall mirror, portable sewing machine, old long carriage typewriter, med. size skin diving suit & fins, books, old short wave radio, & many other items. T. Becherer, 281-5852.

BOY'S BICYCLE - 26", Columbia Newsboy model. New, still in carton. Metallic blue. W. Noe, Ext. 2407.

ICE SKATES - Riedel, size 3, strong ankle support, like new. Cost \$24, asking \$15. Also chrome kitchen table with grey marbelized formica top, 1 leaf, 2 matching chairs, excel. cond., \$20. Also Swedish modern commode chair, dark brown finish, aqua upholstery, never used. Cost \$42, asking \$35. AT 6-0932 after 6.

FOR RENT

HOUSE - East Patchogue, 3 bedrooms, compact living room, lg. kitchen. \$135 per mo. GR 5-9771.

APARTMENT - 3 1/2 rooms, furnished, garage & utilities incl., private entrance, adults only. \$125 per mo. Convenient, central location. GR 5-2193 before 9 a.m.

HOUSE - Charming, completely furnished home overlooking Shinnecock Bay. 1 1/2 baths, hot water heat, all electric kitchen, 2 car garage, 30 min. from Lab. Ext. 2596 or LT 9-1614.

APARTMENT - 3 1/2 room apartment to sublet. Large rooms & balcony, Lakeland Garden Apartments, Sayville. Al, Ext. 2419.

CARPOOLS

RIDE - Wanted. Would like to join carpool from Holbrook area. E. Smith, Ext. 7134.

RIDER - Wishes to join Carpool from Blue Point area. M. Keller, Ext. 7654.