

the Bulletin Board

VOLUME 18, NUMBER 20

Published by the BNL Personnel Office

MARCH 10, 1965

NEXT BERA CONCERT MARCH 25

The next program in the BERA Concert Series will be given by the Renaissance Quartet on Thursday, March 25, at 8:30 p.m. in the Brookhaven Center.

The program is entitled, "An Evening of Renaissance Music." It will include English part music, music for instruments from Germany and Spain, French songs for tenor and lute, Spanish lute solos, and music from Shakespeare's plays.

The artists are Joseph Iadone, lutenist; Barbara Mueser, viola da gamba; Morris Newman, recorders and Robert White, tenor.

Admission: Adults, \$3.00; Children (under 18 years old) \$1.50; and Non-employee Guests, \$3.50.

THEATRE GROUP

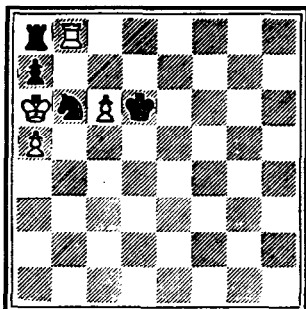
The Theatre Group will hold its next meeting on Tuesday, March 16, at 8:30 p.m. The place is the home of Ruth and Harold Schwarz: the second house west of Bellhaven Road on the north side of South Country Road between Brookhaven and Bellport (it's really not as complicated as it sounds!).

CAMERA CLUB

A local contest for picking club entries in black and white prints and color slides for the North Shore Hospital Photo contest will be held Thursday, March 11, at 8:30 p.m. at the Recreation Building.

CHESS PROBLEM

This week's problem has a pleasingly odd solution. The diagram shows a graceful setting, but how does White proceed if 1. RxR, NxR, or if PxN, RxR? Solution elsewhere in the BULLETIN BOARD.



B.E.R.A. SPECIAL CONCERT

presenting

PEARL BAILEY

Saturday, April 3, 1965

The Brookhaven Theater

8:00 p.m.



Arrangements have been completed for the personal appearance of Miss Pearl Bailey, stage, motion picture, TV, radio and recording star, at the BNL Theater on Saturday evening, April 3, 1965, at 8:00 p.m. Miss Bailey will be accompanied by Mr. Louis Belson, her husband and bandleader, and a company of musicians.

This Special Event will be subsidized by B.E.R.A. funds. Until March 26, ticket sales will therefore be limited to employees and their immediate families on a first-come, first-served basis. Tickets, at \$3.00 per person, will go on sale at the Recreation and Personnel Offices, on Thursday, March 11. After Friday, March 26, any tickets still available will be sold to guests of employees at \$4.00 each.

A sell-out is anticipated. No standing room tickets will be sold. So remember to get yours early.

B.E.R.A. Board members and members of B.E.R.A. activities are pitching in to make Miss Bailey's appearance THE EVENT of the year.

RIFLE AND PISTOL CLUB

The BNL Rifle and Pistol Club broke a tie for the hotly-contested L.I. Industrial League leadership by defeating the Grumman "A" team, 715-696, and then trouncing Bellock Instrument with a 743 - BNL's highest score in two seasons of shooting. Brookhaven now holds first place with a record of 12 wins and 1 loss. IBM is second with 11 and 1, and Sperry is third in line with 12 wins and 2 losses.

Steadfast George Barton was the only team member to withstand the marathon pace by placing a scoring performance in both matches. Pete Colombo's golden shooting ensemble finally paid off when he fired the season's highest individual score against Grumman - a 190 out of 200. Not to be outdone, Roy Domish followed through in the next match with a 194 - the new record.

Because of the late mailing of membership applications, the period for renewals has been extended to March 31. Get your dues in the mail today!

PERSONNEL SERVICES

Recreation Office - 3 Center Street
Daily 9:00 a.m. - 1:00 p.m.

CIRCUS

Discount coupons for the Ringling Bros. Barnum & Bailey Circus at Madison Square Garden are now available. The coupons are good for the evening performances of April 6, 7, 8, 13, 14, 15, 27, 28, 29, May 4, 5, and 6. Prices with discount are \$4.25, \$3.50, and \$2.90.

METS TICKETS

Some choice dates are still open, so make your reservations now to avoid being disappointed.

ATTENTION SPORTS CAR BUFFS!

Interested in forming a Sports Car Club at BNL? If enough are interested, let's get together for a meeting and discuss it. Sports car owners and interested non-owners are asked to call the Recreation Office, Ext. 391, or Dick Jones at Ext. 591 to leave your name and department. Depending on the number of folks interested, the first meeting will be announced in a forthcoming issue of the BULLETIN BOARD. Let's hear from you!

SOLUTION TO CHESS

- | | |
|--|---|
| 1. P-B7 (threatening RxR, NxR, and P-B8 queen) | 1. KxP to get rid of the dangerous pawn |
| 2. PxN check | 2. KxR |
| 3. P-N7 a good move | 3. K-B2 |
| 4. PxR (queen) and wins | |

SCOTCH DOUBLES TOURNAMENT RESULTS

On Saturday, March 6, one hundred twenty-eight bowlers competed in the annual Scotch Doubles Tournament, and the winners were as follows:

Gross Series Score:

PLACE	TEAM	SCORE
1st	A. Harrigan & R. Frasca	846
2nd	G. & E. Fales	832
3rd	J. & B. Svoboda	825

High Gross Game Score:

1st	A. & G. Kuzmack	258
2nd	D. & B. Pollock	242
3rd	T. & F. Bugala	240

The participation award went to S. Chunyk and A. Macaulay.

A round of applause goes to Emory Egler, our Tournament Chairman, who did such a fine job of organizing the event.

TABLE TENNIS TOURNAMENT

The playing schedule for the Table Tennis Tournament will be posted in the Gymnasium on March 10, as will the tournament regulations. Competition will officially begin the week of March 15.

Arrivals and Departures

WELCOME TO BNL

AGS	William E. Anderson	Ext. 2410
BIOLOGY	Matthew H. Hogan	2151
CENTRAL SHOPS	Eugen Johe	577
CHEMISTRY	Heinrich E. Hunziker	2427
NUCLEAR ENGINEERING	Suresh C. Srivastava	7753
PHYSICS	Clarence E. Barrett	

SPECIAL DEMONSTRATION

Zissen Technical Associates will give a demonstration of the single axis stage and interferometer using laser source on Friday, March 19. The demonstration will be held in Room 234 of the Physics Building, 20 Pennsylvania, between 1:30 and 3:00 p.m.

SPECIAL NOTICE

If you have any questions or comments regarding the Cafeteria, please contact one of the members of BNL's Cafeteria Committee.

The members of the committee are J. Washburne, Ext. 395; E. Hunter, Ext. 2795; and G. Harbottle, Ext. 2267.

BNL CAFETERIA MENU WEEK OF MARCH 15

MONDAY

Chicken Gumbo Soup.....	.15
Braised Beef Steak, Onion Gravy.....	.65
Corned Beef Hash, Egg.....	.75
Cheese Omelette.....	.50
Hot Roast Beef Sandwich, Fr. Fr.....	.75
Buttered Broccoli Cuts.....	.10
Whipped Potatoes.....	.10
Buttered Lima Beans.....	.10
Fruit Salad Bowl - Cottage Cheese.....	.60
Tuna Fish Platter.....	.75

TUESDAY

Cream of Mushroom Soup.....	.15
Boneless Loin of Pork, Barbecue Sauce..	.65
Chicken Pot Pie.....	.65
Grilled Chopped Sirloin au Jus.....	.65
Hot Pastrami Sandwich, Fr. Fr.....	.75
Whipped Potatoes.....	.10
Buttered Peas.....	.10
Mashed Yellow Squash.....	.10
Egg Salad, Stuffed Tomato.....	.60
Sliced Cold Ham - Potato Salad.....	.75

WEDNESDAY

Cream of Tomato Soup.....	.15
Corned Beef & Cabbage.....	.70
Irish Lamb Stew.....	.65
Barbecued Pork Roll, Fr. Fr.....	.75
Whipped Potatoes.....	.10
Buttered Spinach.....	.10
Wax Beans in Bacon Sauce.....	.10
Banana Split Platter.....	.60
Turkey Salad Bowl.....	.75

THURSDAY

Split Pea Soup.....	.15
Steamed Frankfurters & Baked Beans....	.65
Tri-Fruit Platter.....	.60
Cold Meat and Cheese Platter.....	.75

Luncheon Special

- Juice
- Steamboat Roast
- Mashed Potatoes
- Green Peas
- Assorted Relish Dish
- Jello
- Mints & Nuts
- Beverage
- \$.99**

FRIDAY

Coney Island Clam Chowder.....	.15
Fried Fillet of Flounder - Lemon.....	.65
Beef Burgundy over Noodles.....	.70
French Fried Scallops, Tartar Sauce.....	.65
Stuffed Cabbage Roll, Tomato Sauce....	.65
Fish Sticks on Roll, Fr. Fr.....	.75
Whipped Potatoes.....	.10
Peas and Mushrooms.....	.10
Buttered Beets.....	.10
Western Salad Plate.....	.75
Cottage Cheese, Chive Stuffed Tomato..	.60

The manager reserves the right to change the menu without prior notice.

POOL OPEN

Tuesdays thru Fridays
5:00 p.m. - 10:00 p.m.

FOLK DANCING

There will be folk dancing on next Monday evening, March 15, at 8:00 p.m. in the Recreation Hall. The welcome mat will be out for everyone, no matter what his folk dancing experience.

CLASSIFIED ADS

FOR SALE

1957 VOLKSWAGEN - Sedan with sunroof & comb. short wave and broadcast band Phillips radio. Needs generator. \$300. C. Pozgay, Ext. 2488 or SH 4-5875.

1963 PONTIAC - Grand Prix, auto. trans., fully powered, r/h, 22,000 miles, showroom cond. Many extras. Will take \$2100 or nearest reasonable offer. AT 6-9260.

1960 OLDSMOBILE - Super 88, auto. trans., full power, r/h, excel. cond. inside & out. \$995 or best offer. AT 6-9260.

1962 CADILLAC - El Dorado convertible, very good cond., r/h, low mileage, gold-green. W. Creller, Ext. 2869.

HUDSON JET - Classic with 75,000 orig. miles. Good rubber, r/h, inspected, used every day. First offer of \$150 takes it. J. Hallock, Ext. 2480 or 878-0222 after 6.

1958 BUICK - Century convertible, auto. trans., ps, r/h, power top, 5 good tires, mechanically excel., 15 mpg on regular gas. \$250. D. Schweitzer, Ext. 622.

1962 CHEVY II - 300, 4 door sedan, r/h, std. trans. L. Rogers, Ext. 2859.

1958 CHEVROLET - 4 door sedan, V8, ps, r/h, auto. trans., 6 tires, good running cond. \$350. Sal, Ext. 2209 or 924-5097 after 6.

1962 SIMCA - 4 door sedan, low mileage, clean. \$695. HR 3-4871 after 6.

1964 OPEL - Station wagon, excel. cond. 281-7394.

1955 CHEVROLET - V8, std. trans. \$100. Mike, Ext. 2412 or AT 9-0562.

1957 RAMBLER - Std. trans., r/h, 4 good tires (2 snow), good running cond., \$175. Available April 1. Ext. 7142 or 534.

1963 VOLKSWAGEN - \$1200 immediate sale. 281-7394.

1960 CORVAIR - 700, 4 door, auto. trans., r/h, fold down rear seat, everything in excel. cond. Asking \$695. Ext. 362 or AT 6-9665 evenings.

1961 FALCON - 4 door, deluxe interior & trim, w/w tires incl. w/w snow tires. Brand new 3 year battery. Chesapeake blue. \$700 or best offer. R. Borrill, Ext. 2436 or 878-1286 after 6.

1961 FALCON - Deluxe station wagon, clean, auto. trans., light blue, 101 special engine, w/w tires, r/h, seat belts. E. Schwarz, Ext. 7692 or 273-7880.

1952 PONTIAC - 32,000 miles, N. Sereda, Ext. 2126 or 727-6387.

1960 CHEVROLET - Impala convertible, blue with new white top, r/h, ww's, 283 V8, auto. trans. \$1050. Bob, Ext. 2152 or HR 3-2753.

1961 CHEVROLET - Impala convertible, V8, ps, \$1150. Bill, Ext. 7756.

1961 RAMBLER - Classic, std. trans., r/h, reclining seats, seat belts, good cond. K. Fuchel, Ext. 2446.

1961 OLDSMOBILE - F-85, 4 door sedan, V8 engine, auto. trans., r/h, excel. cond., available late March. \$1000. J. Culkun, Ext. 2119.

1962 RAMBLER - American station wagon, std. trans., good cond., 2 new snow tires, avail. April 1. \$800. R. Schermer, Ext. 541 or SH 4-9877.

1963 VOLKSWAGEN - Sunroof, sedan, immaculate cond., many extras. Asking \$1300. Also 1958 Buick Special, 4 door hardtop, V8 auto. trans., ps/pb. \$325. P. Lieberman, Ext. 7732.

1961 STUDEBAKER - 2 door sedan, V8, limited slip diff., r/h. \$600. Bill, Ext. 359.

1956 MERCURY - Convertible, ww's, r/h, new snow tires. 589-9459 after 6 p.m.

1959 CHEVROLET - Good cond., best offer. Don, Ext. 657 or FO 8-1538.

1958 SIMCA - Station wagon, approx. 70,000 mi., needs some work. Best offer. Tony, Ext. 2430.

1957 CHEVROLET - Bel Air, 2 door, ps, r/h, new exhaust system. \$250. GR 5-8316 between 12 & 6.

1965 CHEVROLET - 1/2 ton pick-up, 4 wheel drive, lock-out hubs, 7' western snow plow, tractor lamps, 8' box, V8, 175 hp engine, five 900x15 snow tires, under 4000 mi. Fully guaranteed, orig. cost \$3,665. Sacrifice for \$2,600 firm. MO 5-8137.

16 FT. MAHOGANY CUSTOM BUILT BOAT - shelter cabin, 35 hp Johnson outboard with controls and steering. All necessary equipment included: life cushions, anchor, nylon lines, fire extinguisher, etc. \$550. firm. Must sell. Call Jeff, Ext. 571 or 878-0980 after 6.

20' SKIFF - 1963 Commodore with 1962 80 hp Mercury outboard. Asking \$1650. B. Williams, Ext. 2369 or PE 4-5381 after 6.

MARINE ENGINE - 145 hp Chris Craft with reverse gear, fresh water cooled. \$75. H. Houtsager, Ext. 7677 or AT 6-0691.

14' RUNABOUT - Cruiser, Inc. Lapstrake with 25 hp (Gale) Evinrude outboard, 6 life preservers, controls, oars, anchor, and trailer with winch & nylon line. All for \$350. R. Perry, Ext. 2749 or GR 5-1636 after 5:30.

14' BOAT - All fiberglass, 1964 Glasspar, windshield, steering, running lights. Brand new, never in water. \$575 firm. AT 6-0047.

16' RUNABOUT - Lyman in excel. cond., has windshield & navy top, running lights, 6 volt storage battery in copper lined box, 25 hp Evinrude very reliable & in good shape, 6 gal. Cruise-a-Day tank. Also many extras (anchor, bilge pump, braided vinyl mooring lines, etc.) \$350 takes all. Ext. 362 or AT 6-9665 evenings.

16' BOAT - Borum Corsair, 40 hp elec. start outboard with generator & battery, full canvas, cushions, pole holders, 3 6-gal. gas cans, spare prop, Holsclaw trailer. Many extras. \$875. B. Espensen, Ext. 2287 or SH 4-3403 evenings.

16' RUNABOUT - Dargel molded plywood, 30 hp elec. Johnson, navy top, cushions, built-in fish well. Very good cond. \$375. Frank, Ext. 451.

13' RUNABOUT - MFG fiberglass with windshield, steering wheel, control level, 40 hp Merc. with elec. starter, trailer with winch, anchor, paddle, life preservers. Bill, Ext. 2589 or 878-1912.

1958 CHRYSLER CROWN - Rebuilt engine M47. 125 hp, not used since rebuilding, hyd. trans., needs work or exchange. \$325. Also ship-to-shore radio & antenna. \$35. Ext. 2285.

PROPERTY - 110x225 wooded plot. Marina privileges and private beach in exclusive residential section of Hampton Bays located on Shinnecock Bay. \$6,500. B. Kohler Ext. 2102.

HOUSE - 9-room ranch in Mastic. 4 bedrooms, 2 baths, recreation room, cellar, garage, corner property. \$17,500. 281-9411 after 5.

HOUSE - Cape Cod, 4 bedrooms, full basement, oil hot water heat, corner lot in Brookhaven. AT 6-8626.

HOUSE - 3 bedrooms, double garage, corner property near schools and stores, Patchogue. GR 5-7372 after 5:30.

HOUSE - 3-bedroom ranch, full basement, outside attached tool storage room, landscaped, lots of trees. Walk to beach or creek. Developed community. \$15,000. W.T. Walsh, 878-2265 or Ext. 7782.

HOUSE - 6 room ranch, fireplace, w/w carpeting, 2-car garage, oil hot water heat, storms & screens, beautifully landscaped lot 150x100. Near Lake Ronkonkoma. JU8-7082.

HOUSE - Halbrook area. 3 bedrooms, 2 yr. old ranch. Garage, enclosed patio, fenced, storms & screens. On wooded 1/2 acre, dead end street, many extras. \$20,500 firm. JU 8-0047.

HOUSE - 4-bedroom Cape with large eat-in kitchen, over sized treed fenced-in plot, garage, finished basement. 80 foot walled black top driveway. \$19,990. Falango, Ext. 2389 or SU 5-7223.

HOUSE - Split level, 3 bedrooms, 1 1/2 baths, large eat-in kitchen, dining room & 23'x15' den all beautifully wood panelled. New w/w carpeting in living rm. & den. Storms and screens, attached garage, private well for lawn, etc. besides city water. Beautifully landscaped, cedar fenced. Near schools and shopping. 20 min. from Lab. \$18,500. Se 2-3957 or Ext. 7782.

HOUSE - In Brookhaven. 10 yrs. old. 8 rooms, 2 full baths, utility room, full basement, attached 2-car garage, screened porch, approx. 165'x125'. Taxes, \$500. Asking \$18,900. Ext. 2748 or AT 6-1307.

SCUBA TANK - Also regulator by Healthways, \$65. Very good cond. J. Paul, Ext. 2390 or GE 7-2053 after 6:30.

DAVENPORT - Modern, foam cushions, slip-cover worn. \$40. AT 6-0903.

TV SET - 19" Packard Bell table model with stand. \$25. All tubes new except picture tube. M. Flom, Ext. 2741.

FILE CABINET - 16 drawer Kardex file cabinet for 4x6 inch cards, 14x20x24 inches. G. Raynor, Ext. 454.

SHOP MANUALS - And dealer service sheets for Renault and Peugeot. Best offer. Dennis, Ext. 397.

GARAGE DOORS - 80" x96", 2 doors with hardware. Best offer. JU 8-7082.

MISCELLANEOUS - Durst 35 mm enlarger, VW roof rack, 17" portable TV. A. Johnson, Ext. 2543 or 286-9141.

TV SET - 15" Admiral with wheel stand, \$30. Also 3-speed small portable phonograph, new needles, \$15. P. Lieberman, Ext. 7732.

SHELTIE - AKC male, inoculated, excel. disposition, housebroken but prefers outdoor living, weatherproof. \$50 plus stud privileges. L. Joiner, Ext. 439.

AQUARIUM - Two 10 gal. tanks, 2 wrought iron stands, 2 heaters, 2 filter systems, pump, reflector, 2 breeder nets, vacuum cleaner, gravel, etc. Value over \$100; will sell for \$45. JU 8-5793.

HOUSE - 3 year old split level, 6 rooms, attached garage, 1½ baths, landscaped 100x110 property, chain link fenced yard, close to all conveniences, excel. cond., many extras. \$18,600. GR 5-8511.

HOUSE - 3 bedroom ranch 1 block from Sound in Wading River. 1½ years old, ½ acre, oil hot water baseboard heat, oversized garage, lg. finished entry foyer, storms & screens, washing machine, refrigerator. WA 9-6004 or JU 8-1774.

HOUSE - 9-room ranch in Mastic, 4 bedrooms, 2 baths, rec. room, enclosed porch, cellar, garage, corner property. \$17,500. 281-9411 after 5.

HOUSE - 5 room ranch, oil hot water heat, storms & screens, in Stony Brook. \$16,500. Ext. 481 or 751-1253.

HOUSE - In East Patchogue, 3 bedrooms, living room with fireplace, adjoining dining area, playroom, den with bookshelves, large eat-in kitchen, pantry, double garage, 2½ baths, wooded 175x200 plot with hedge, oil baseboard heat, 350 feet from bay. AT 9-2146 after 6.

HOUSE - 6-room custom built ranch with fireplace, 2-car garage, w/w carpeting, oil hot water heat, storms & screens, beautifully landscaped lot 150x100. \$18,800. Near Lake Ronkonkoma. JU 8-7082.

PROPERTY - Waterfront property in Cape Coral, Florida. 80x125 on a deep, wide canal. Roebuck, Ext. 560.

HOUSE - 6-room house in Medford. 4 rooms & bath downstairs & 2 rooms & bath & 2 attic rooms upstairs. GR 5-2268.

FURNITURE - Turquoise hide-a-bed couch, \$70. Blond chest of drawers, \$6. 2 double bed springs, \$5 each. Turquoise & white table lamps, 2 for \$5. Double bed mattress, \$5. Gray & white chrome set with 6 chairs, \$55. End tables, 2 for \$5. Gas lawn mower, 24" rotary blade, \$20. Zenith 21" TV, good operating cond., \$15. Kenmore elec. dryer, \$60. Boy's 24" bike, needs new tube, \$5. R. Heiner, Ext. 384 or AT 6-8626.

RADIAL SAW - 10" Craftsman "Accra Arm" with \$50 worth of accessories, all for \$170. Ext. 644.

SANDER - 12" disc, delta, tilting table, mitre gauge, steel stand. \$70. C. Porter, Ext. 618.

HI-FI SPEAKER SYSTEMS - 2 Electro-Voice "Regina 200" slimline speaker systems, each with 10" woofer and 5" tweeter in walnut enclosure. Lafayette price \$86.50 each. Sell for \$65 each (will not sell separately). New cond. Ext. 2927 or 473-7316.

MISCELLANEOUS - Westinghouse deluxe washing machine, about 8 years old but in great shape, \$40. Rotisserie, \$15. Professional malt machine, \$10. Dresser mirror, 24"x16", \$3. GR 5-0624.

C.B. RADIOS - Two. \$40 for both. AT 6-8712 from 6 to 8.

LIVING ROOM SET - 3 pcs. consisting of 2 chairs & convertible sofa and bed. All with slip covers. \$90. Also Frigidaire deluxe 10.3 cu. ft. refrigerator-freezer, \$40. GR 5-8211 after 5:30.

14" RIM - For Ford. \$4. F. Rumph, Ext. 2221.

BABY CRIB - Storkline, & matching wardrobe, \$40. Also two 650x13 snow tires, used 5000 miles. \$10 both. Bob, Ext. 2152 or HR 3-2753.

STEREO AMPLIFIER - Lafayette 40 watt, in new cond. \$40. H. Houtsager, Ext. 7677 or AT 6-0691.

REFRIGERATOR - 2 door Hotpoint, \$40. Also grey formica kitchen set, 6 chairs, \$40. GR 5-7999 after 5.

FOR RENT

HOUSE - 4 bedrooms, furnished, in Setauket. Available March 15 - Sept. 15. S. Pickard, Ext. 7601 or 751-0297 evenings.

APARTMENT - Furnished, 3 rooms, utilities, 8 miles to Lab. In Shirley near Smithpoint bridge. K. Tarantino, Ext. 574 or 281-7367.

APARTMENT - Furnished or unfurnished, 1 bedroom, combination dining, living room, modern kitchen. SH 4-8916 after 7.

HOUSE - In Mastic Beach, 10 min. from Lab. 3 bedrooms. R. Burton, Ext. 2852.

FURNISHED ROOM - Very reasonable, liberal concessions, bath, pleasant residential section in Sayville. Male tenant only. LT 9-3146.

HOUSE - 3 bedrooms, garage, refrigerator & washer, 5 min. from Lab in Middle Island. \$125 per month. Ext. 382.

APARTMENT - In East Patchogue. Large 3-room furnished apartment with storage room. 2 family house, private entrance. \$105 per month incl. utilities. AT 6-9524 after 6.

CARPOOLS

DRIVER - Wishes to join carpool from Dogwood Drive, Overhill Road, Wading River. C. Phillips, Ext. 2234 or 929-4472.

DRIVER - Safe, careful, courteous to fill "Bay Shore Express" carpool. Applicants must have a keen sense of humor and a strong heart. Owners of small cars & students need not apply. Call Fearless Flop, Ext. 672 or Cannonball Brown, Ext. 610.

DRIVER - Wanted to complete carpool from North Ocean Avenue & Shaber Road, Patchogue. W. Rasmussen, Ext. 2410.

DRIVER - To complete existing carpool which originates near Exit 24, Southern State Pkwy. Ideal for Merrick, Bellmore, East Meadow areas. L. Livingston, Ext. 2881 or C. Ruege, Ext. 451.

DRIVER - Wanted to complete punctual five-man carpool from Shirley area. L. Shotkin, Ext. 665.

DRIVERS - Opening for two in carpool from E. Northport, Elwood, Commack area. F. Paffrath, Ext. 2287.

SECOND REQUEST - For 2 drivers. Meet at public parking area, West side of Wantagh Ave., Wantagh, 2 blocks South of Southern State Parkway. A. Laurine, Ext. 448.

DRIVERS - Needed for carpool in the vicinity of Bayport. H. Pfister, Ext. 674.

DRIVER - Rider to add to existing carpool leaving New Hyde Park. S. Roe, Ext. 2700.

DRIVER - Wanted for established carpool from West Babylon area. M. Grant, Ext. 2497.

DRIVERS - Needed for existing carpool. Bay Shore, Brentwood area. Roebuck or Hebrance, Ext. 560.

WANTED

HOUSE - Unfurnished or partly furnished 3 bedroom house to rent in Bellport, Brookhaven, or E. Patchogue. S. James. Ext. 7795 or 2803.

PLAY PEN - Collapsible. Marguerite, Ext. 439.

HIGHCHAIR - Must be padded and moderately priced. Would prefer one which breaks down into a table. C. Hull, Ext. 2907 or 2916.

TELE LENS - For a Pentax 105 mm through 500 mm. Would prefer Takumar but not a must. 878-0071 after 6.

CHEVROLET ENGINE - Late model, 283 or 327. Dennis, Ext. 397.

TRAILER - For 3 weeks, June - September. Guidoni, Ext. 2230.

HOUSE - 1 or 2 bedrooms, permanent, full basement, garage, Patchogue or vicinity, working couple. Gottfried, Ext. 426 or GR 5-2027.

CLASSICAL GUITAR - In good cond. Chow, Ext. 2165.

CEMENT MIXER - 4½ cu. ft. B. Espensen. Ext. 2287.

SIGMA XI MEMBERS - All Brookhaven members are invited to affiliate with the Stony Brook Club. Any inquiries should be directed to Theodore D. Goldfarb, Secretary, Stony Brook Sigma Xi Club, State University of New York at Stony Brook.

PLAYPEN - In good cond. A. Ache, AT 6-9322.

EARPHONES - 1 set suitable for use with simple crystal radio set. Also baseball catchers glove for novice Little Leaguer. Ext. 2161.

GARDEN EQUIPMENT - and lawnmower. Mrs. Kao, HR 3-4417.

PORTABLE BABY CRIB - Decent cond. B. Talsma, Ext. 2852 or 2842.

BABY'S PORT-A-CRIB - Used but in good cond. F. Tuzza, Ext. 7772.

METRANOME - Used. Ext. 2812.

LOST

BATH TOWEL - White Martex, lost at swimming pool Wed. evening, 2/10/65. J. Kelley, Ext. 2432.

CAR COAT - Olive tweed lost Friday, 2/19, from Cafeteria coat rack. Just like yours only it's mine. C. Zuroff, Ext. 2585 or 2487.

FOUND

GLOVE - Man's tan wool & leather. Found in Recreation Office.

SHOE - Lady's black.

Personnel Services - 3 Center Street