

# the Bulletin Board

VOLUME 18, NUMBER 24

Published by the BNL Personnel Office

April 7, 1965

## ARBORETUM TOUR FOR STAFF WIVES

On behalf of the State University of New York at Stony Brook, Mrs. Karl D. Hartzell extends a cordial invitation to wives of BNL staff members to tour the gardens and greenhouses of Planting Fields Arboretum, S.U.N.Y. at Oyster Bay, on Tuesday, April 27. These gardens are famous for their beauty and rare plants. The tour should prove stimulating and interesting but only 125 individuals can be accommodated. Buses will leave the Brookhaven Center promptly at 9:30 a.m. If you would like to participate in this trip, please send one dollar for bus fare, along with your name, address and telephone, to Mrs. Joan Webster, Administration Building. Requests will be accommodated as they are received. If you have questions, call Ext. 493.

Please bring your own sandwiches for lunch. Dessert and coffee will be served by our hostess.

## NURSERY SCHOOL PROPOSAL

The proposal which developed at the March 22 meeting of those interested in the starting of an on-site nursery school has been submitted to the proper Laboratory advisers and is under consideration. Further news will be published as it develops.

## COMING SOON

—New York Drama Critics' Award—  
**LORRAINE HANSBERRY'S**

## "RAISIN IN THE SUN"

Sidney      Claudia      Diana  
Poitier      McNeil      Sands

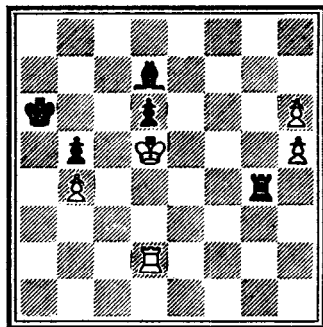
April 15 - BERA Film Series - April 15

## SPRING OUTDOOR RIFLE TOURNAMENT

Beautiful weather made the first match of the spring rifle tournament an enjoyable occasion. The top shooters of the day, with scores ranging from 139 to 150 out of a possible 200, were German, Alexander, Jacobs, and Domish. A good time was had by all and new participants are welcome to join the Club and enter the tournament. Matches are held on Sunday afternoons at the North Tract Range.

## CHESS PROBLEM

In this week's problem, White is behind in material but has two passed pawns. It is White's move and win. Solution elsewhere in this week's BULLETIN BOARD.



## TABLE TENNIS TOURNAMENT

The annual BNL table tennis tournament, which started on March 13, is now entering its final stages.

In doubles competition, the team of Dave Cox and Joe Smith has stormed its way into the finals by defeating Garrett-Rodgers 21-18, 21-10 in the quarter-finals and then eliminating the team of Kevy-Fuchel in the semi-finals, 21-6, 17-21, 21-16, 21-13. In the second bracket, a finalist is yet to be determined: the winner of the Heller-Rabinowitz vs. Foley-Hien match will be playing Cox and Smith for the **doubles championship on Tuesday, April 20 at 12:15 p.m. in the Gymnasium**. All interested spectators are welcome and some volunteers will be needed to assist with the scoring and officiating.

In singles competition, last year's champion Dave Cox has defeated K. Fuchel and S. Feldberg to reach the semi-finals, where his opponent will depend upon the outcome of the A. Kevy vs. S. Garrett match. In the second bracket, S. Heller and J. Smith have emerged as semi-finalists. Heller defeated K. Foley in the first round and G. Rabinowitz in the quarter finals. Meanwhile, in the same bracket, J. Smith disposed of R. Nawrocki and M. Deegan in successive order. The date for the **singles championship** has been set for **Thursday, April 15, at 12:15 p.m.** All spectators (and helpers) are welcome to be on hand for what should be a very interesting championship match.

## AN OPERA? YES AND NO

"Why are you doing an opera?"

At the risk of losing (or gaining) an audience, we must now reveal the stark, naked truth: **THE THREEPENNY OPERA** is and is not an opera. Let's say that again, even we're confused. "3PO" is not a classic opera of the Aida variety. It is, however, an opera in the sense that it deals, in song, with the classic themes of love, hate, lust, corruption and revenge - everything in fact (to quote *Irma la Douce*) that makes life liveable!

To understand even further, let's assume that you are sitting in the BNL Theater on April 30, May 1, 7, or 8 at 8:30 p.m. There is a complete blackout. A single spotlight focuses on the bedraggled figure of a streetsinger. He announces: "You are about to see an opera written for beggars. Since it was conceived with a splendor only a beggar can imagine, and since it had to be so cheap even a beggar could afford it, it is called **THE THREEPENNY OPERA**." Here is the definitive answer. "3PO" is an opera in its classical themes, told in terms of a modern musical comedy for a modern-day audience.

Audiences all over the world have cheered "3PO's" music and laughed uproariously at its tale of the amorous adventures of London's most lovable rogue. Everyone can at least whistle the rasping refrains of the streetsingers' ballad of Mack the Knife.

Come to see this production on April 30, May 1, 7, or 8. The BNL Theater Group guarantees you an enjoyable and long-remembered evening at Brookhaven's first musical play.

## BASKETBALL LEAGUE

The Old Timers became the second half winners in the basketball league by defeating the Dirty Sox, 35-23. Carl Klamut had 9 points for the winners, while Mike Zguris toted up 12 for the losers. The game was a preview of the championship match as these same two teams meet to determine the league winner. The championship game will be played this Thursday, April 8, at 7:15 p.m. Everyone is invited to attend. Free beer will be available. **COME ON DOWN!**

**PEARL BAILEY****AND BAND****MAKE BIG BANG AT BNL**

The walls and rafters of the BNL Theater were literally shaken for two hours last Saturday night as Pearl Bailey and her company of fifteen musicians performed for a full house of appreciative employees and their families. For Miss Bailey and her audience, it was love at first applause. With ballads, blues, and burlesque, with comic patter and bits of incisive philosophy, she responded with the full range of her talents.

She displayed her well-known versatility in many ways: from "Please Don't Talk About Me When I'm Gone," accompanied by a lone slap-bass, through "Birth of the Blues" in the one and only Pearl Bailey style, to "Bill Bailey" belted with brassy bounce. Her audience held all the way.

She took her listeners back through the years to her first performance as an amateur in Philadelphia with a soulful "Poor Butterfly," took them with her through a hilarious re-creation of

her later cabaret performances, and brought them back to the present with one of the show tunes from the *The Roar of the Greasepaint*. A highlight of the evening was a fifteen-minute impromptu performance in the aisles that left her musicians stranded and looking on in helpless wonder until they, too, relaxed and enjoyed the performance along with the audience. At another point, she regretted in song and patter, along with appreciative old timers, not being able to do some of the things they used to do "Thirty Five Years Ago."

And who will ever forget her curtain speech, after a standing ovation from her audience, to which she added, without music, a personalized, paraphrased version of "True Love?"

Miss Bailey goes from her success at BNL to a guest appearance on the Jack Paar Show this Friday night, followed later in the month by an engagement at the Americana Hotel in New York City.

**CAFETERIA MENU****WEEK OF APRIL 12****MONDAY**

Cream of Mushroom Soup.....	.15
Baked Chicken Breast Supreme.....	.65
Southern Beef Hash.....	.50
Seafood Newburg over Rice.....	.75
Grilled Steer Liver, Bacon Strips.....	.65
Whipped Potatoes.....	.10
Buttered Mixed Vegetables.....	.10
Buttered Brussels Sprouts.....	.10
Steamed Rice.....	.10
Cottage Cheese, Apricot, Grapefruit....	.60
Chef's Tuna-fish Salad Bowl.....	.75

**TUESDAY**

Vegetable Soup.....	.15
Fried Fillet of Flounder, Tartar Sauce....	.65
Italian Spaghetti, Meat Balls.....	.65
Pepper Steak on Roll, Fr. Fr. ....	.75
Whipped Potatoes.....	.10
Green Beans.....	.10
Mexicorn.....	.10
Pineapple Boat Salad.....	.60
Western Salad.....	.75

**WEDNESDAY**

Potato Chowder.....	.15
Irish Stew.....	.65
Deviled Crab Cakes.....	.65
Hot Roast Beef Sandwich, Fr. Fr. ....	.75
Whipped Potatoes.....	.10
Buttered Carrots.....	.10
Red Cabbage.....	.10
Sliced Turkey Platter.....	.75
Vegetable Luncheon Platter.....	.60

**THURSDAY**

Beef Consomme.....	.15
Frankfurters & Baked Beans.....	.65
Fruit Salad w/Cottage Cheese.....	.60
Ham Salad Bowl.....	.75

**LUNCHEON SPECIAL**

Juice
Steamboat Roast
Mashed Potatoes
Green Peas
Assorted Relish Dish
Jello
Mints & Nuts
Beverage
<b>.99</b>

**FRIDAY**

Manhattan Clam Chowder.....	.15
Broiled Halibut Steak.....	.65
Beef Paprika, Dumplings.....	.65
Frankfurters & Baked Beans.....	.65
Omelet with Mushrooms.....	.50
Fish Sticks on Roll, Fr. Fr. ....	.75
Whipped Potatoes.....	.10
Buttered Lima Beans.....	.10
Celery and Tomatoes.....	.10
Baked Beans.....	.10
Mandarin Orange, Turkey Salad.....	.60
Seafood Platter.....	.75

The manager reserves the right to change the menu without prior notice.

**VOLLEY BALL**

On Tuesday, April 13, beginning at 5:00 p.m., the volleyball leagues will terminate the 1964-65 season with championship play, awards, beer and refreshments. All league participants are welcome.

The second half standings are as follows:

Associated League	W	L
Chemistry	16	2
Cosmotron	11	4
Medical	11	4
Blue Jays	6	12
Instrumentation	1	17

University League	W	L
Bubble Chamber	16	2
Volapers	8	7
Physics I	7	8
Chamber Chaps	3	12
Physics II	3	12

**PERSONNEL SERVICES**

**Recreation Office — 3 Center Street**  
Daily 9:00 a.m. — 1:00 p.m.

**DISCOUNT TICKETS**

Discount coupons, good through April 21, are available for "Ben Franklin In Paris" starring Robert Preston, now playing at the Lunt-Fontanne Theatre in New York.

*Arrivals and Departures***WELCOME TO BNL**

AGS	
George F. Martin, Jr.	Ext. 2410
Joseph Matsko	2152
Todd H. Whitaker	2410
APPLIED MATHEMATICS	
Mary Ann Austen	2589
Elizabeth C. Distel	2589
CHEMISTRY	
Bonnie W. Hulse	609
INSTRUMENTATION & HEALTH PHYSICS	
Barry Kreiling	2871
PHYSICS	
John F. Frasher	

**RECENT DEPARTURES**

INSTRUMENTATION & HEALTH PHYSICS	
James M. McGovern	
MEDICAL	
Ann S. Jupp	
NUCLEAR ENGINEERING	
Govindasharma Srikantiah	
REACTOR	
Gail Aloï	

**DECEASED**

**Caroline Tiffany** passed away March 26, 1965. She had been employed in the Health Physics Division since August 1, 1949.

**JUDO CLUB**

**Black belt Don Baker, of the Biology Department, in action at the Gymnasium.**

BNL's Judo Club has been training in the Gymnasium for almost a year now. The practice has become more intense since the purchase of a large judo mat. The Club has about twenty members, including a black belt and three green belts.

Regular meetings are held in the gym on Tuesdays and Thursdays from 5:15 to 6:30 p.m. If you'd like to join in (no previous experience necessary), drop by at a training session.

**SOLUTION TO CHESS**

- |  |            |
|--|------------|
| 1. P-R7  | R-N4 Check |
| 2. KxP   | RxP        |
| 3. K-B7  | B-K3       |
| 4. K-N8  | B-Q4       |
| 5. RxB !!  | RxR!!      |
| 6. P-R8 (Rook) Now White threatens R-R6 mate, so R-Q3                                |            |
| 7. K-B7 !! and wins, because Black cannot stop Mate by R-R8 and still save the Rook. |            |

**GOLF CLUB**

Attention all members! Your newsletter explained our first "Anyone Can Win" tournament. Remember, there's no entry fee, so let's all get out and enter. Use your score card which is stamped by BNL and play at any time between April 17 and May 2. The 18 holes must consist of two different 9 hole courses, but all 18 do not have to be played the same day. Send your scorecard to Jerry Weiss after you've played. Good luck!

**NASSAU-SUFFOLK****BRIDGE CHAMPIONSHIP**

For the second straight year, a team paced by two Lab employees, Les Lawrence (Applied Mathematics) and Sandy Wagner (Instrumentation) has defeated the best teams from Nassau, Suffolk and Queens in the annual Nassau-Suffolk Bridge Association's Knockout Team-of-Four Championship. The strong combination of Dick Hinkle (captain) and Life Master Madeleine Maurer were the other two team members.

It took five months and five rounds of play to cut the original twenty-eight team down to one undefeated team. In the final match, against a highly powerful team, the victors breezed to a 94 international match point (imp) victory. Bill Maurer, fifth member of the team and still unable to break into the lineup during the match, commented, "The bidding of Lawrence and Wagner is extraordinary. They never miss a slam, even those that are highly distributional. Their light opening bids and the Wagner Two Diamond bid consistently get them into the bidding early and out again when they don't belong. In two years of knockout play, they have taken only one big set. Dick Hinkle and my wife Madeleine are a really solid pair, giving nothing away. All in all, it makes for a tough team."

Each member of the winning team will receive a trophy and about a dozen master points, a commodity dear to the hearts of bridge players.

**CLASSIFIED ADS****FOR SALE**

1960 OPEL - Good running cond., new snow tires, low mileage, immediate sale. \$200. H. Einfeldt, Ext. 7600 or 281-3634 after 6.

1959 FORD - Station wagon, 4 door, brown, 6 cyl., excel. mech. cond. with 4 very good tires. \$550. J. Van't Hof, Ext. 315 or AT 6-8278.

1964 FORD - Galaxie 500 XL convertible, ps, black with white top, 300 hp, 4 speed trans., bucket seats, AM-FM radio, new car warranty, excel. cond. M. Sheehan, Ext. 7772.

1957 THUNDERBIRD - 2 tops, r/h, ww's, auto. trans., good cond. Dick, AT 6-8230.

1963 PONTIAC - Tempest Le Mans, auto. trans., bucket seats, 6 tires & wheels, r/h, excel. cond. \$1,385. Lou, Ext. 440.

1964 MONZA - 2 dr. sport coupe. White, 110 hp eng., 4 speed trans., r/h, ww tires. 2 ww snow tires on separate rims used only one winter. Excellent cond. 1½ yrs. warranty left. \$1,875. B. Allen, Ext. 2334.

1954 PLYMOUTH - Good second car with snow tires and radio. \$75. H. Houtsager, Ext. 7677 or AT 6-0691.

1963 VOLKSWAGEN - 1200, white, sunroof, excel. cond. Best offer over \$1100. Ext. 7138.

1958 FORD - V8, 4 door, std. trans., r/h, 4 almost new tires, excel. running cond. \$300. Danby, Ext. 2471 or WA 9-4530 after 7.

1962 CHEVROLET - Impala convertible, white with white top & aqua interior. Std. trans., r/h, ww's, 283 V8, power steering, padded dash, seat belts. Top in good cond. Must sell, make reasonable offer. Ext. 2384 or GR 5-4992.

1955 WILLYS - Station wagon, 2 wheel dr., 6 cylinder, F head engine. \$300. H. Jewett, Ext. 2389 or 878-2126.

1958 CHEVROLET - Impala, auto. trans. V8. Beautiful cond. \$600. Dan, JU 8-4955 after 5 p.m.

1963 FORD - Truck ¾ ton pick-up. Holly green. Excellent cond. \$1,395. M. Kinney, Ext. 316 or YA 4-3783.

1962 SIMCA - 4 dr. sedan. Just tuned and balanced. Best offer. HR 3-4871 after 6 p.m.

1963 VOLKSWAGEN - Blue, white interior, ww tires, r/h. 22,000 miles. \$1,175. firm. Gail, Ext. 2857.

1959 STUDEBAKER - Lark, std. shift, r/h, very good cond. \$300. firm. A. Kevey, Ext. 2516.

1962 JAGUAR XKE - Roadster, 16,000 miles, excellent cond., one owner, Tenn. registration. Ext. 2171.

1964 SUNBEAM ALPINE - Series IV. H. Buchanan, Ext. 7121.

1961 VOLKSWAGEN - Blue convertible, good cond. \$975. Dick, Ext. 2307 or AT 6-0293.

1961 FORD - Econoline camper, fully equipped with ice box, bed, toilet. Ext. 427 or AT 6-0323.

1965 KARMANN GHIA - Fully equipped. SH 4-9724.

1957 FORD - ½ ton Ranchero pick-up. New tires, brakes, transmission. Best offer. J. Scott, Ext. 574 or GR 5-0192.

1956 RAMBLER - 4 door sedan, auto. trans., r/h, 5 good tires, good mech. cond. \$150. Ext. 7683 or GR 5-9009.

1956 JAGUAR XF 140 - Convertible coupe. Ww tires, r/h. Excellent cond. Ext. 624.

14' RUNABOUT - Cruiser Inc. Lapstrake with 24 hp (Gale) Evinrude outboard, 6 life preservers, controls, oars, anchor, & trailer with winch & nylon line. R. Perry, Ext. 2749 or GR 5-1636.

29' SKIFF - Clipper Craft trunk cabin, 185 hp Interceptor V8, 1.5-1 reduction, sleeps 5 in comfort. Lg. convertible dinette, full height lavatory, complete stainless galley. Extras incl. ship-to-shore, depth sounder, compass, elec. bilge pump, windshield wipers, stern fishwells, 110 VAC power connections, curtains, screens, full canvas, many other extras. Boat in water, ready to go. Ext. 591 or LT 9-5755 after 6.

MISCELLANEOUS - Heathkit 5" scope, \$50. Heathkit sweep generator, \$45. Speed graphic camera 3¼x4¼, \$60. Lafayette KT320 general coverage receiver, \$50. D. Bowman, Ext. 7773 or 281-5226 after 7.

DOUBLE BED METAL SPRINGS - \$5. Also double bed mattress, \$5. AT 6-8626.

SCUBA TANK - Also regulator & weight belt by Healthways, \$65. Very good cond. J. Paul, Ext. 2390 after 4 p.m. or 475-5196.

13' RUNABOUT - MFG fiberglass with windshield, steering wheel, manual control lever, 40 hp Merc, with elec. starter, trailer with winch, anchor, life preservers, paddle, gas tank, & battery. \$625. Bill, Ext. 2591.

HOUSE - For sale or rent in Smithtown. 8 room split level, 3 bedrooms, 1½ baths, all appliances, storms, screens, near school and shopping. Immediate occupancy, \$18,000. Ext. 455.

HOUSE - 4 bedroom Cape Cod, full basement, oil hot water heat, corner lot in Brookhaven. AT 6-8626.

HOUSE - 3 bedroom ranch, full basement, attached tool storage shed, landscaped, tree filled lot, walk to beach or creek, developed community, low taxes. Stop in & take a look. \$15,000. W. Walsh, Ext. 7782 or 878-2265.

HOUSE - 6-room, 2-story house in Medford. 4 rooms & bath downstairs, 2 bedrooms & bath upstairs. Living room with big fireplace, adjoining dining room, oil hot water heat, 2 car garage, attached screened porch, and full basement. 128x213. GR 5-2268.

HOUSE - In Port Jefferson Village. 2½ story Victorian, extensively modernized, within walking distance of schools & stores. 14 rooms, 4 or 5 bedrooms, 2 baths, 3 lavatories. Completely new kitchen with built-in appliances, screened porch & attic with full head room. Efficient oil fired, 2 zone hot water heat, detached garage. Lot ¾ acre, landscaped. Ext. 2989 or HR 3-7657.

BAR - 6 ft. long. \$35. Nick, SE 2-6114 after 6.

PIANO - Kranich & Bach console, about 5 years old. Cherry finish, in excel. mech. cond. List price \$1100, asking \$600. AT 6-0932.

CLOTHES DRYER - Montgomery Ward "Signature." Suitable for small house or summer cottage. 110-220 volts, 1 year old, like new. Asking \$30. E. Potter, Ext. 2456 or 286-9705 after 7.

AQUA LUNG - Voit with 5 min. safety, snug pack, single stage regulator (Explorer II), fins & snorkel. Ron, Ext. 2285.

SLOT RACING TRACK - 3 lanes, 40 ft. per lap chi-cane, banked curve 6'x9'. \$40 or best offer. SH 4-5743.

PREAMPLIFIER & AMPLIFIER - Hi-fi McIntosh monophonic. TD-124 turntable with Grado stereo arm & Stanton 481 stereo cartridge with .001 stylus & never used .007 stereo stylus. Model 6KHL speaker. All equal to new. Make offer. Owner leaving. Ext. 2991.

PAINT - 5 gals. Sears paint, shingle & shake, charcoal grey. \$3 each. Ext. 2102.

WORKSHOP MANUALS - For Peugeot 404, Renault Gordini, Renault R-8, Renault Dauphine, Renault Caravelle, Renault Micro Bus, Renault auto. trans., and Nash Metro. Also many dealer service sheets. 878-0071 after 6.

MISCELLANEOUS - Surf rods, reels, tackle equipment, and handyman's tools. GR 5-9257 after 2.

MISCELLANEOUS - Bunk beds in excel. cond. Kitchen set in excel. cond. 30 gal. elec. hot water heater. Make offer. Lou, Ext. 2326.

POODLES - AKC registered, 6 weeks old, beautiful apricots, champion background. YA 4-3502.

TIRE - One, tubeless nylon, 800-15, almost new, mounted on Cadillac wheel. J. Ryan, Ext. 451.

SHOP SERVICE MANUAL - Manufacturer's for 1964 Dodge cars, covers all models. Never used. \$3. K. Weiss, Ext. 411.

MODEL AIRPLANE SUPPLIES ENGINES - McCoy "35," Johnson "35," Fox "15," (2) "049." Partially built planes: Skylark, Sabre Stunt, Super Ring Master, Spitfire, plus assorted gas tanks, wheels, belcranks, props, etc. U-Reely control, whole package, \$35. J. Grosso, Ext. 7642 or MO 9-4357 evenings.

TRAILER - In good cond. Best offer over \$100. J. Mitchell, Ext. 2416 or MO 6-6156.

BABY'S STROLLER & CAR SEAT - In perfect cond. Stein, Ext. 534.

TIRES - W/w, tubeless, 4 ply. Size 560x13. Used one month. R. Nicholas. Ext. 2869.

LAWN MOWER - Sears 21" self-propelled reel type. 2 years old. Excel. cond. \$40. F. Barnes, Ext. 488 or 2494.

MISCELLANEOUS - RCA vacuum tube voltmeter, \$25. Precision model 920 tube checker with volt ohm meter, \$35. 500 watt modulation XFMR, \$5. Crystals 21.4 mc, 8475 kc, 7250 kc, 7175 kc, 3590 kc. \$1 each. Mobile feed through capacitor, .1 at 600 volt, 20 amp, \$1. Bill, Ext. 2314.

ELECTRIC RANGE - 36" G.E. automatic air-liner, J-367. Used very little. Ext. 2127 or LT 9-3217.

MISCELLANEOUS - Rotator - TR4-cornell dubilier \$22. Rotary beam antenna-TA33 jr-moseley, \$35. Coax-RG8U-100 ft roll, brand new, \$10. Windmill tower, 10'x10' base-50' high - platforms at 20' and 45' levels. Ideal for ham rotary beam. You dismantle it. \$70. C. Porter, Ext. 618.

STAMP COLLECTION - Whole or separate sets mint and used, 25% less than current price. 281-9020 after 6 p.m. weekdays, all day Sat. and Sun.

SKI BOOTS - Italian handmade black ladies battenhofers. Size 5-5½, double boot, excellent cond. Good for male or female child, or small adult female foot. Boot press included. \$20. G. Lellouche, Ext. 2566 or HR 3-3229.

MISCELLANEOUS - SX 28 halicrafter all band rec. \$50. 75 Watt xmitter 80 thru 6 meters, \$20. RCA vacuum tube voltmeter, \$25. Precision model 920 tube checker with volt ohm meter, \$35. Bill, Ext. 2314.

CAMERA - Rollei flex 2.8E with meter and case. Outfit also includes Rolleiinar No. 2, sunshade & Heiland reflex bracket, \$130. firm. Doug, Ext. 2229 between 12 & 12:30 p.m. or HR 3-1842 after 6 p.m.

D.C. AMPERE GAUGE - — 60 to +60. Excellent cond., \$2. R. Graesser, Ext. 606.

MODEL RADIO CONTROL EQUIPMENT - 10 channel transmitter (orbit tube type) with power supply and 3 each 10 channel receivers (2 kraft, one bramco). \$60. 6 kraft transistor servo amplifiers, wired and ready to install, \$25. 2 O.S. 49 R.C. motors, one brand new, \$20. P. Buhl, Ext. 354.

## CLASSIFIED ADS SUPPLEMENT

## For Sale

RANCH - In Shirley. Good buy. 3 bedrooms, kitchen, dinette, living room, bath, garage. Lot 75x120. Will sell at cost. \$14,000. 281-8050.

HOUSE - 6 room custom ranch with brick front. 3 bedrooms, porch, patio, fireplace, w/w carpeting, double garage, beautifully landscaped 150x100, quiet neighborhood. Must see to appreciate. \$18,800. JU 8-7082.

HOUSE - Split level, 3 bedrooms, 1½ baths, beautifully wood-paneled interior, new w/w carpeting in living room & den, attached garage, storms & screens, private well besides city water. Fully landscaped & cedar fenced. Near shopping & schools, 20 min. from Lab. Asking \$17,900. Belfiore, Ext. 7782 or SE 2-3957.

HOUSE - In Wading River, 1 block from Sound. 3 bedroom ranch 1½ years old on ½ acre wooded plot, oil hot water baseboard heat, oversized garage, finished entry foyer, storms & screens, washing machine and refrigerator. JU 8-1774.

HOUSE - 3 bedroom Cape Cod with family room, dining room, living room with fireplace, eat-in kitchen, garage, aluminum siding, chain link fence. 1 mile from Sayville & L.I.R.R. Taxes, \$550; price, \$17,000. Lot 69x170. LT 9-3256 after 5.

HOUSE - 2 bedroom ranch, 7 years old, in Mastic Beach. Full basement, storm windows (aluminum), lot 50x125, hot water heat. \$11,500. 281-7665.

HOUSE - In Ronkonkoma. 7 rooms, 1½ baths, finished recreation room, ½ acre fenced property. Storms & screens, blacktop driveway & patio. JU 8-7133.

HOUSE - 5 bedroom colonial cape with lg. family room with built-ins, beamed living room with fireplace, 2 baths, near everything. Located on Cedar Street, Stony Brook. House empty, must sell. Asking \$25,000. Ext. 571 or AT 6-0341.

HOUSE - 6 room modern ranch in Mastic Beach, 9 miles from Lab. 3 bedrooms, 1 with built-in double bunks. Paneled living room, w/w carpet, full bathroom, elec. kitchen with wall oven, oil heat, many extras, fenced backyard with fruit trees. Low taxes, can take over low per cent mortgage. \$11,500. 281-5130.

ORGAN - Magnus electronic chord organ, 3 months old. HR 3-1356 after 5.

CAMERA - Polaroid Model 160, new cond., \$50. Also Hoover rug cleaner, excel. cond. \$10. Sandufsky, Ext. 2709.

LAWN MOWER - 24" rotary riding lawn mower, 3 hp Gemco with forward & reverse. Used for 3 seasons, in very good cond. Asking \$75. Also 18" snow blower, Sears Craftsman, 3 hp, self propelled, used only 8 times. Sells for \$169, asking \$60. John, Ext. 2149.

TYPEWRITER - Underwood/Olivetti with carrying case. Very good cond., hardly used. Cost \$120, asking \$75. Ext. 558 or AT 6-0929 after 6.

8' DINGHY - With bronze oar locks & oars, \$35. Also 100 lb. mushroom anchor, \$35. Ext. 2210.

1960 BOAT - Motor, & trailer, Pembroke. All accessories incl. GR 5-1815.

14' BOAT - Keller Kraft, 1963, with trailer, 40 hp Johnson, boat cover, anchor, cushions, life preservers, gas tank. M. Walker, Ext. 2121.

BOAT PROPELLERS - 1 pr. Federal Equapoise 14" dia. x 12" pitch for 1½" shaft. Good cond. \$35. Ext. 2381.

16' SLOOP - SS class, gaff-rigged, cotton main & jib, anchor, cushions. \$350. Ext. 367.

11' DINGHY - Fiberglass construction with navigation lights and marine compass. \$55 for quick sale. Ron, Ext. 610.

OUTBOARD - 5 hp Johnson. \$25. F. Rumph, Ext. 2221.

14' SAILBOAT - Fiberglass with trailer, outboard, dacron sails, & many extras. R. Bergoffen, Ext. 7677 or YA 4-5158.

12' RUNABOUT - Custom built, 4½' beam, fast & sturdy. No reasonable offer refused. G. Warner, Ext. 2474 or 941-3927.

17' RUNABOUT - 1962 Penn Yan deluxe. 1962 elec. start 40 hp Evinrude outboard. Battery 1 yr. old, full canvas, compass, cushions, anchor, lights, control panel, 2 gas cans. \$900. Eager Beaver Sale: Above with paint, varnish, etc. for do-it-yourself spring outfitting, \$800. Peter, Ext. 577 or GR 5-0831 after 6:30.

SKI BOAT - 18 hp Johnson, ideal for teenager. Ext. 639 or 878-1915 after 5.

16' BOAT - Custom built mahogany, 35 hp Johnson motor with controls, life cushions, nylon lines, anchor, & all accessories. Sacrifice: \$450 takes all. Jeff, Ext. 571 or 878-0980 after 6.

20' SKIFF - 1963 Commodore with 1962 80 hp Mercury outboard. Asking \$1650. B. Williams, Ext. 2369 or PE 4-5381 after 6.

18' RUNABOUT - 1962 Eltro plywood hull, 40 hp Mercury with single lever controls & 2 Cruise-a-Day tanks. Running lights, 8 preservers, anchor, bilge pump, compass, navy top (new 1964), boat hook & boarding ladder. \$895 firm. L. Rogers, Ext. 2859 or GR 5-5488.

OUTBOARD MOTOR - 1964 75 hp elec. starting Evinrude. Short shaft. \$750 complete. Guarantee still in effect. B. Tuthill, Ext. 2308 or PA 7-3106.

21' SAILBOAT - Sloop, cabin, lg. cockpit. Reasonable. Ext. 2101.

1960 LINCOLN - Continental Mark V, air cond., 4 door, excel. cond. 878-1197 or 878-1388.

MISCELLANEOUS - Heavy, water proof tarp, nearly new, 9'4"x12'6", \$8. 4 bulb fluorescent light fixture complete with 4 48" bulbs, starters & switch, \$10. Work bench, 12'x24", 2 lg. drawers, 2 duplex outlets, 24" high full length tool rack attached to rear of bench. Very good cond. C. Porter, Ext. 618.

CAMERA - Leica 3-C, speeds 1 to 1/1000 sec., with special collectors item Zeiss Sonnar 50 mm. F:1.5 lens; Elmar 50 mm. F:3.5 lens; Bessony close-focus copying adaptors; and Sekonic L-38 exposure meter. Recently overhauled & internal flash sync installed. Complete with instruction books. \$100 firm. LT 9-1342.

KITCHEN TABLE - Chrome with gray marblized formica top. Extra leaf, two matching chairs. Excellent cond. \$20. AT 6-0932.

CAMERAS - Movie outfit, Revere turret lens 8 mm movie camera, new argus 500 showmaster movie projector, flood lamps, tripod, light meter, and movie screen, all for the unreasonably low price of \$79.99. 35mm Argus Match-Matic camera & Argus slide projector, will give illuminated slide sorter at no extra cost. \$55. Jeff, Ext. 571 or 878-0980 after 6 p.m.

LAWNMOWER - Toro riding mower, reel type, forward and reverse, excellent cond. Ext. 482.

LOCUST POSTS - Reasonable. S. Jungreis, Ext. 301-45.

DINING ROOM SET - Danish modern, expandable table, four chairs, buffet-china cabinet. Half price. Ext. 7133.

STEREO - Motorola, Danish modern console. Half price. Ext. 476.

ATTENTION ANTIQUE GUN COLLECTORS - E. Remington 1858 new model army. Very good to excellent cond. GR 5-5066 anytime.

REFRIGERATOR - Cold Spot, 8 cu. ft. and General Electric automatic washing machine both in good condition. \$100. for both. PA 7-1278 after 5 p.m.

WHEELS - 14" Ford wheel, \$3. & 15" Plymouth wheel. \$2. F. Rumph, Ext. 2221.

MISCELLANEOUS - Baby crib, bassinet, playpen, canvas carrycot/buggy, high chair. Exakta Varex 35mm single lens reflex with Zeiss Tessar 5m f/2.8 lens \$99. Heathkit oscilloscope with demodulation probe, \$25. Ext. 7657 or YA 4-6943.

MAGNAVOX RECORD CONSOLE - Stereophonic hifidelity, excellent cond. \$150. Honeytoned solid rock maple colonial desk and night table. Good cond. \$65. HR 3-2523.

MICROPHONE - Electrovoice model 623. This dynamic microphone will really improve the capacity of your home tape recorder. \$25. P. Lieberman, Ext. 7732.

CRIB & MATTRESS - Blond. \$20. J. Uher, 929-4472.

ENCYCLOPEDIA BRITANNICA - 1957 edition, 24 volumes, bookcase. \$225. Yearbooks, 1958-1964, 7 volumes, \$40. 878-2110.

ROTISSERIE - Electric, used only a few times, like new, \$20. Woelfel, Ext. 7686 or JU 8-7082.

CB RADIO - \$30. 281-7665.

JET PUMP - ¾ hp Westinghouse motor, pressure switch & gauge, 2" casing adaptor, 75' of 2" and 1" pipe. Used about 3 years. \$60. JU 8-4707.

TIRES - Kenyon snow king, 800x14, black, nylon, T/L, used 4 months, half price. Cohn, Ext. 2891.

LAWN MOWER - 24" Jacobsen "Estate" with riding seat. Engine needs work, mechanics delight, \$25. Ext. 2100.

#### WANTED

LIFE RAFT - Two man, the kind that inflates, please. JU 5-8322.

OUTBOARD MOTOR - 25 to 40 hp outboard motor, 1961 Johnson or Evinrude, in good shape. Walter, Ext. 580.

STEAMER TRUNK - Mrs. Joshi, Ext. 2479 or 2833 after 5:30.

L.I. FORUM - 16 copies from 1938 to 1962 to complete a collection. Have extra copies, 1947 to 1964 to swap. J. Austin, Ext. 668.

LARGE ROUND TABLE - Walnut or mahogany preferred. Chairs optional. Pat, Ext. 7691 or PA 7-3523 after 5:30.

BABY PLAY PEN - Net type. Woelfel, Ext. 7686 or JU 8-7082.

STRING PLAYERS - An uncommon opportunity to play the Verdi Requiem in concert on May 22 with the North Shore Choral Society. First & second violins, violas, & 1 or 2 cellos. This is a demanding score so do not apply unless you are a good player. E. Snow, HR 3-3041.

HOUSE - To rent, 3 bedrooms, preferably furnished. Ext. 2948.

PUNCHING BAG - And platform, and other muscle building gym equipment suitable for 10-year-old son and enthusiastic father. R. Graeser, Ext. 606.

BOARDER - Male or female. Moriches area, pleasant surroundings. Ext. 639 or 878-1915 after 5.

WATERFRONT PROPERTY - Port Jefferson through Wading River, with or without house. SH 4-2992 after 5:30.

MUSHROOM ANCHOR - 100 lbs. Ext. 2165.

¾ TON TRUCK - 250 Model Ford, rear end 4.56 (41-9) ratio. AT 6-1270 after 5.

TYPIST - For sociology thesis, preferably using an elec. typewriter. L. McMahon, 281-7494.

RIDERS - To upstate New York via Thruway to Buffalo for weekend of April 18. J. DiCarlo, Ext. 424 or 7167.

HOUSE - Unfurnished or partly furnished 3 bedroom house to rent in Bellport, Brookhaven, or East Patchogue. S. James, Ext. 7795 or 2803.

HOUSE - To rent in Patchogue. Unfurnished, all year, 2 bedrooms, basement, garage. Gottfried, Ext. 7684 or GR 5-2027.

#### FOR RENT

FURNISHED APARTMENT - 4 rooms in East Patchogue. \$105 per month incl. utilities. AT 6-9524 after 6.

APARTMENT - 4 rooms, furnished or unfurnished, all utilities, year round. SH 4-9724.

APARTMENT - New efficiency apartment with wood paneling, furnished, private entrance, utilities. 5 min. from Lab. 281-8044.

APARTMENT - Nice 4 room apartment, unfurnished. All utilities except bottled gas for cooking. Lake Ronkonkoma area. Available May 1. Ext. 371 or JU 8-8834.

BOAT TRAILER - Ext. 2304 or GR 5-7275 after 6.

#### CARPOOLS

DRIVER - Wishes to join carpool from near Exit 39, Northern State Pkwy (Manetto Hui Rd.) or will take rider(s) to Lab in own car. P. Herling, Ext. 2881.

DRIVER - Wanted for established carpool in vicinity of Bayport-Blue Point. Marion, Ext. 462.

DRIVER - Full size suburban owner wishes to join or form punctual carpool from Lindenhurst area. Paul, Ext. 566 or TU 4-8574.

DRIVERS - Wanted for carpool from Shaber Rd., North Patchogue area. D. Oakley, Ext. 2158.

#### FOUND

GLOVE - Man's brown leather, found A.G.S.

GLOVES - Lady's black cloth, found in Medical.

CONN. LICENSE PLATES - 397-992 & 780-803.

GLASSES - In case, found in Cafeteria.

TOBACCO POUCH - Black.

GLOVES - Black wool.

GLOVE - Man's brown leather.

GLOVE - Lady's red leather.

GLASS CASE - Blue.

GLOVE - Lady's black leather.

**Personnel Services - 3 Center Street**