

# the Bulletin Board

VOLUME 18, NUMBER 37

Published by the BNL Personnel Office

JULY 14, 1965

## DR. HIRS APPOINTED CHAIRMAN OF BIOLOGY DEPARTMENT AT BNL



Dr. Christophe Henri Werner Hirs has been appointed Chairman of the Biology Department at Brookhaven National Laboratory. The appointment, announced by Dr. Maurice Goldhaber, the Laboratory's Director, became effective July 1 for a five-year term. Dr. Hirs succeeds Dr. Howard J. Curtis, who will continue his research as a Senior Scientist in the Biology Department.

Dr. Hirs was born April 25, 1923, in Berne, Switzerland. He became a U.S. citizen in September, 1952. He received his B.Sc. in Chemistry from Manchester University in England in 1944 and his Ph.D. in Biochemistry from Columbia University in 1949. From 1949 to 1956 he was an Assistant Professor of Biochemistry and from 1956 to 1958 an Associate Professor at the Rockefeller Institute.

Dr. Hirs joined the staff of BNL in 1958 as an Associate Biochemist in the Biology Department. His research is mostly concerned with the structure and function of proteins.

Dr. Hirs is a member of the American Chemical Society, the American Association of Biological Chemists, and Sigma Xi.

Dr. and Mrs. Hirs reside in Old Field, Setauket.

## BASTILLE DAY DANCE

Tonight's the night! Bermudas and berets are the attire for the evening at the Bastille Day Dance which will be held in the Recreation Building (Apartment Area) tonight beginning at 9:00. More dances are planned if the turnout is good and if we can find something to celebrate.

Music in keeping with the ultra-casual atmosphere will be provided by Chappy and His Chaps. Beer and soda will be available for purchase, and those desiring stronger potions may bring their own. Admission is 75¢; dates are not necessary. Free Peabody and Frug lessons until midnight. See you there!

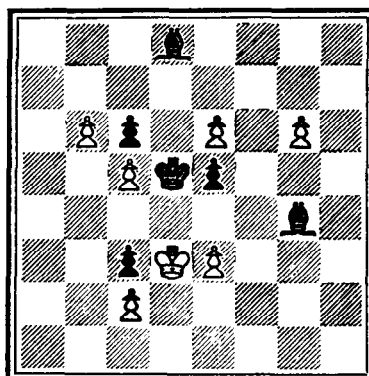
## TEN YEAR SERVICE PIN AWARDS

During the month of June, the Laboratory awarded pins and certificates to six employees in recognition of their completion of ten years of service at BNL. The employees are as follows:

James Costanzo.....	Reactor
Donald J. David.....	Physics
Ralph Giallorenzo.....	Mech. Eng.
Gertrude Neuhooff.....	Nuc. Eng.
Mildred Pavelec.....	Medical
Alexander Selan.....	Plant Maintenance

## CHESS PROBLEM

In this week's problem, it is White's move and win. Study the diagram to see if you can pick out the most important pawn. Ten to one you guess wrong. White has three passed pawns, but Black has two bishops. P-QN7 does not win because after 1. B-B2; 2. P-K7, B-B4 check....followed by Black's BxP, the pawns are stopped. Solution elsewhere in the BULLETIN BOARD.



## BERA FILM SERIES

### DOUBLE FEATURE

Thurs., July 15 — Lecture Hall — 8:30 p.m.

### ONLY TWO CAN PLAY



When both parties are willing, who is the seducer and who the seduced? Peter Sellers, who has demonstrated a tremendous versatility in a broad spectrum of roles ranging from outrageous slapstick to high tragedy, contributes an answer—of a happy sort!—in "Only Two Can Play." With Mai Zetterling as his avaricious associate in amorous adventure, Sellers not only proves that sex is necessary but he also demonstrates it can be fun.

"Only Two Can Play" is the story of a frustrated husband whose eyes widen and whose pulse quickens at the mere sight of a girl. Of special interest is the hectic insanity of Sellers' nocturnal efforts at love. "Only Two Can Play" is based on the Kingsley Amis novel, "That Uncertain Feeling." The screenplay was written by knowledgeable Bryan Forbes and the film is a Frank Launder-Sidney Gilliat production, with lovely Virginia Maskell also starred as Sellers' equally frustrated wife.

"A side-splitter!... The brightest quips of modern times... Peter Sellers' performance puts all recent seventh-year scratchers in the shade."

—NEW YORK TIMES

## THE GOLDEN COACH

Anna Magnani, in her first English-speaking role, plays Camilla, the richly temperamental star of an Italian com-

(Cont'd on Page 2)

## DR. H.W. SIEGELMAN TO JOIN STAFF OF BIOLOGY DEPARTMENT

Dr. Harold W. Siegelman, formerly with the Crop Research Division of the U.S. Department of Agriculture, has joined the BNL staff as a Plant Biochemist in the Biology Department.

Dr. Siegelman's principal work has been in the area of the identification of plant substances that control the growth and development of plants. His discovery with Butler and Hendricks of phytochrome was a milestone in plant physiology. The work he will undertake at Brookhaven will be along the same lines; thus, he will form an effective link between the molecular biology group on the one hand and the plant physiology and plant cytogenic groups on the other.

Dr. Siegelman received his M.S. degree in 1947 and his Ph.D. in 1951, both from the University of California in Los Angeles. He is married and has a daughter aged 16 and a son aged 11.

## ELECTION OF DALU OFFICERS

A special meeting for the election of officers will take place on Thursday, July 29. The meeting will be held between the hours of 1:00 p.m. and 8:00 p.m. in the Knights of Columbus Hall, Railroad Avenue, Patchogue.

The offices to be filled are President, Vice President, and Recording Secretary. Nominees are as follows:

### President

George Meyer  
Jim Ryan

### Vice President

Charles Geonie  
Paul Kelly

### Recording Secretary

L. Sealy  
Walter Spiers

Members are urged to attend the meeting and cast their ballots.

## Directly Affiliated Local Union No. 24426 AFL-CIO

## GOLF ELECTION TO BE HELD

Len Baker, acting President of the BERA Golf Association, has appointed a committee to nominate candidates for officers for the coming year.

The committee consists of A. Carstens (chairman), I. Singer, A. Christoffersen, and J. Van Norman.

Golf Association members should direct their suggestions for nominees to this committee during the remainder of the week.

## Bera Film Series - (Continued)



**The Golden Coach**

media dell'arte troupe which comes to a Spanish province in South America in the eighteenth century.

Jean Renoir, writing of the story of "The Golden Coach," which he directed and helped to adapt for the screen from Prosper Merimee's story, said: "I wanted it to reflect (Magnani's) well-known emotional power, while revealing for the first time to American audiences the Magnani of the music halls with her lusty talent for song and dance, buffoonery and mimicry, laughter, and pathos."

As the commedia dell'arte player, Magnani is courted by three suitors---the actor Felipe, the bullfighter, and the Viceroy. When the Viceroy gives Camilla the golden coach which is the symbol of his glory and power, there is a scandal in the colony and his position is threatened. The Viceroy surrenders to the demands of his council. Despising him for his weakness, Camilla rides off in the coach. In the end, the impasse is resolved when she rejects all three suitors, donates the coach to the Bishop to transport Holy Sacrament, and returns to her true love, the stage.

"A stunningly colorful show....Its beauty is amazing." —NEW YORK TIMES

"Magnani is different from anything we have seen her do....she emerges an expert comedienne and an engaging singer and dancer. She is flamboyant, naughty, sweet, reserved, and in Technicolor, beautiful."

—NEW YORK DAILY NEWS

"Magnani is superb... Every detail of the production sweeps the audience into a wave of pleasure."

—NEW YORK WORLD-TELEGRAM & SUN

"Directing as clever, tight and smooth as any Renoir has ever done....The settings, costumes, and paraphernalia are very handsome, and the Technicolor photography of Claude Renoir is even better than in "The River." Vivaldi's music fits "The Golden Coach" like a glove." —FILMS IN REVIEW

## Arrivals and Departures

### WELCOME TO BNL

#### ACCELERATOR

Christopher Agritellis  
David M. Jastrzebski  
Hugh F. Montgomery

#### APPLIED MATHEMATICS

Kenneth J. Brightman

#### BIOLOGY

Susan Abraham  
Harold W. Siegelman

#### INFORMATION

James R. Edrys

#### MECHANICAL ENGINEERING

David B. Blackmur

#### MEDICAL

Amanda L. Harrison  
Herbert Savel

#### NUCLEAR ENGINEERING

Michael J. Attardo

#### PHYSICS

Jack A. Cockrill  
Frances E. Enright  
Leigh E. Jackson

#### PLANT MAINTENANCE

Arthur J. Gannon  
Anthony Kaczmarczyk  
John S. Read  
Ernest L. Winberg, Jr

### RECENT DEPARTURES

#### ACCELERATOR

Anthony J. Longano

#### APPLIED MATHEMATICS

Evelyn Gottesfeld

#### BIOLOGY

Frances G. Roskosky

#### NUCLEAR ENGINEERING

Elmer M. Tory

#### PHYSICS

Helen M. Einfeldt  
William J. Fickinger  
Virginia A. Mead  
Gottfried S. Szongott

#### PLANT MAINTENANCE

Charles J. Schmitz

#### PURCHASING

Phil V. Capozzi

### DECEASED

**Alexander Quarltiere** who had worked in Plant Maintenance since 1947 passed away on July 5.

## NURSERY SCHOOL TEACHERS NEEDED

The nursery school which will start at the Lab this fall is seeking experienced teachers. Anyone who wishes to have further information and obtain application forms should write to Mrs. Moon, in care of the Medical Department, or telephone Ext. 2785.

what's on 

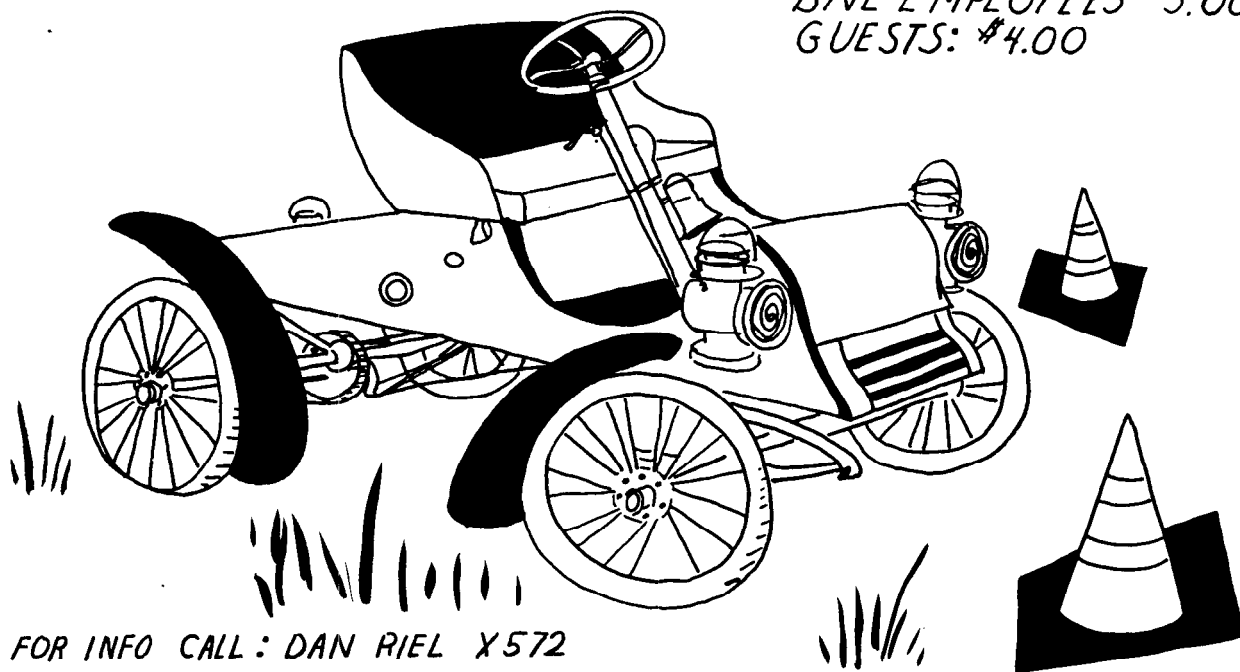
# GYMKHANA

**SUNDAY JULY 18, 1965**  
**WARE-HOUSE AREA 10 AM.**

## REQUIRED:

METAL TO METAL SEAT BELTS  
MUFFLERS

CLUB MEMBERS \$2.00  
BNL EMPLOYEES \$3.00  
GUESTS: \$4.00



FOR INFO CALL : DAN RIEL X572

## PERSONNEL SERVICES

Recreation Office — 3 Center Street

Daily 9:00 a.m. to 1:00 p.m.

## Rental Library

A new selection of books has arrived for your reading pleasure. Among them are:

**Assassination** - Abro  
**The Ambassador** - West  
**Boys and Girls Together** - Goldman  
**Dorothy and Red** - Sheean  
**Julian** - Vidal  
**The Looking Glass War** - Carre  
**Last Exit to Brooklyn** - Selby, Jr.  
**P.S. Wilkinson** - Bryan

## SOLUTION TO CHESS

- |                 |   |
|-----------------|---|
| 1. P-K7         | 1. BxP  |
| 2. P-QN7        | 2. P-K5 check   |
| 3. KxP          | 3. B-B3 check   |
| 4. K-N4         | 4. B-K4   |
| 5. P-N7         | 5. B-K3. Now the pawns are stopped, but White has a surprise. |
| 6. P-B4 is mate |   |

## CAFETERIA MENU

JULY 14 - 16

### WEDNESDAY

Vegetable Soup.....	.15
Roast Leg of Lamb - Mint Gravy.....	.65
Beef Croquettes - Brown Gravy.....	.65
Chili Con Carne.....	.60
<b>Sand. Special:</b> Roast Beef, Cheddar Cheese, Marinated Cucumber.....	.65
<b>Hot Sand.:</b> Cheeseburger, Lettuce & Tomato, Potato Salad.....	.50
Whipped Potatoes.....	.10
Parslied New Potatoes.....	.10
Buttered Peas & Onions.....	.10
Whole Kernel Corn.....	.10
Melon Fruit Salad - Finger Sandwiches.....	.75
Roast Beef Platter.....	.75
Fresh Fruit Aspic.....	.60
Pickled Beets, Onion Slice.....	.15

### THURSDAY

Scotch Barley Soup.....	.15
<b>Luncheon Special</b>	
Steamboat Roast	
Mashed Potatoes	
Carrot Coins	
Spiced Applesauce	Relishes
Bread & Butter	
Pudding or Jello	
Beverage	
<b>\$ .99</b>	
Honey Glazed Ham Slice.....	.65

Buttered Broccoli.....	.10
French Fries.....	.10
<b>Sand. Special:</b> Canadian Bacon on Toast, Pickles & Cole Slaw.....	.65
Turkey Salad Mandarin Orange Bowl.....	.75
Tomato Stuffed, Cottage Cheese.....	.75
Cantaloupe Ring, Blueberries.....	.60
Bremen Beans.....	.15

### FRIDAY

Cream of Tomato Soup.....	.15
Broiled Halibut Steak.....	.65
Beef Burgundy on Rice.....	.70
Baked Lasagne.....	.65
Breaded Scallops, Fishstick Platter, Tartar Sauce.....	.65
<b>Sand. Special:</b> Cream Cheese, Lox on a Bagel, Lettuce & Tomato Salad..	.65
<b>Hot Sand.:</b> Grilled Cheese & Tomato, French Fries & Cole Slaw.....	.55
Whipped Potatoes.....	.10
Cottage Fried Potatoes.....	.10
Buttered Lima Beans.....	.10
Zucchini Squash and Tomatoes.....	.10
Eggs Marinated Vegetable Platter.....	.75
Shrimp Louie Salad Plate.....	.75
Banana and Orange Salad.....	.60
Marinated Broccoli.....	.15

— Special Dessert Today —

!!Long Island Strawberry Shortcake!!  
Aunt Rose's Hot Baking Powder Biscuits  
Fresh Long Island Strawberries  
All the Whipped Cream You Want!  
In a Soup Bowl

.35

## TENNIS TOURNAMENT BEGINS

The draw has been completed, and the schedule posted in the Gymnasium for our 1965 tennis competition which will get underway this week. The contests feature 29 entrants in the men's singles, 13 in the men's doubles, and 8 in the mixed doubles. Unfortunately, a lack of entries has cancelled the ladies' singles.

Contestants are requested to familiarize themselves with the posted tournament regulations and to report results to the Recreation Office as soon as possible.

Trophies will be awarded to the winners of the men's doubles and mixed doubles. First and second place awards will be presented in the men's singles.

Preliminary matches are to be played by mutual time and court arrangements during the scheduled week. The finals will be scheduled and announced by the Recreation Office. Balls and volunteer officials will be provided for the finals only.

**Tournament Courtesy** - It is requested that players using our courts conclude their match as soon as possible and relinquish their court if tournament competitors are waiting to complete a scheduled match.

**Charles F. Dunbar, Jr. to Present  
Lecture on Iran  
July 28 at 3:30 p.m.  
Lecture Hall**

## AROUND THE BASE PADS

by Bob Carciello

### SECOND ROUND STANDINGS:

#### Laboratory League

	W	L	Pct.
Potsareebies	8	2	.800
Phoubars	8	2	.800
Odd Balls	6	4	.600
Deadwoods	4	5	.440
Mets	2	8	.200
Mixups	1	8	.111

#### National League

Braves	9	1	.900
Old Timers	8	2	.800
Floorwalkers	5	4	.560
Tritons	4	5	.440
Bubble Boys	2	8	.200
Backbones	1	9	.100

#### Brookhaven League

Blue Jays	9	1	.900
Cosmotron	6	4	.600
Metallurgy	6	4	.600
Dirty Sox	4	6	.400

Atom Rays	3	7	.300
Medical	2	8	.200

### RESULTS FOR THE PAST THREE WEEKS:

**Laboratory League:** Potsareebies 11 - Odd Balls 6; Potsareebies 22 - Mets 18; Phoubars 7 - Potsareebies 5; Phoubars 5 - Mixups 4; Phoubars 18 - Deadwoods 17; Mets 15 - Mixups 13; Mets 7 - Odd Balls 0 (forefeit); Odd Balls 12 - Deadwoods 8.

**National League:** Old Timers 14 - Backbones 5; Old Timers 6 - Bubble Boys 2; Old Timers 20 - Tritons 9; Braves 10 - Floorwalkers 9; Braves 7 - Tritons 6; Braves 23 - Bubble Boys 10; Backbones 11 - Floorwalkers 10; Bubble Boys 18 - Backbones 13.

**Brookhaven League:** Blue Jays 13 - Cosmotron 8; Blue Jays 5 - Metallurgy 4; Blue Jays 9 - Dirty Sox 8; Cosmotron 13 - Medical 12; Cosmotron 19 - Atom Rays 11; Atom Rays 22 - Medical 13; Atom Rays 12 - Dirty Sox 11; Dirty Sox 10 - Metallurgy 7; Medical 19 - Metallurgy 12.

## SALE OF MOTOR VEHICLES

Four motor vehicles, located at the Security parking lot, will be available for public sale. Inspection will be permitted from July 19 through July 23 between the hours of 9 a.m. and 4 p.m. Bid opening will be held on July 27, 1965.

This sale will be a spot bid sale conducted by the General Services Administration. For further information, call Jo Jackson, Extension 2509.

## CLASSIFIED ADS

### FOR SALE

1960 FORD FALCON - Delux, two door, white, R&H, automatic, A-1 condition, original owner, \$395. Call HR 3-0043 after 6:00 p.m.

16' CATAMARAN - With trailer, ready to go. \$600. F. Langdon, Ext. 402.

21' SKIFF - Made in Finland in 1959. Twin power, cushions, compass, & canvas. Only \$975. Ext. 423 or AT 6-0626.

21' SAILBOAT - Pennant class, sleeps 2, head, dacron sails, good cond. \$1,150. AT 6-9467 evenings.

21' BOAT - 1958 Revel Craft, hardtop, 50 hp Johnson elec. start, bunks, head, all extras. Now in water. Excellent cond. \$1200. WA 9-4893.

RUNABOUT - 1959 Thompson with Evinrude Lark 35 hp elec. starter, mooring cover, controls & windshield. On trailer. \$800 firm. P. Foster, Ext. 2152 or 727-4697 after 6.

12' BOAT - Nice fishing boat, front deck, 2 seats, just painted, \$35. Also 8' speedster, blunt bow, fin, no controls, \$15. Also 10 hp Scott just overhauled, runs perfectly, \$43.95. Jimmy, 878-2197.

18' SEA SKIFF - Custom built with 50 hp Evinrude motor. In very good cond., already in water. Sacrifice. AT 6-9161 after 6.

18' SPEEDBOAT - 1959 Chris Craft inboard, 125 hp Chrysler engine, completely equipped with trailer, immaculate. Must see. \$1900. D. Stewart, AT 6-0840.

26' SEA SKIFF - 1957 Silverton, lapstrake, mahogany planked over oak ribs, excel. cond. Chrysler 125 hp with 1.5-1 reduction gear. Accessories include search light, horn, aqua clear feeder, bilge pump, transom ladder, & radio ground plate. Rod holders, compass, deck cover. 941-4904 after 10 a.m.

19' SKIFF - Custom, with 35 hp Johnson outboard eng., excel. fishing boat, good cond., reasonably priced. A. Wirszyka, Ext. 587 or 281-6173.

24' BOAT - Bay boat with cabin & head. In the water, ready to go. \$250. L. Decker, Ext. 2541 or AT 6-0128.

### FOR RENT

ROOMS - Two bedrooms with or without private living room & kitchen privileges in Pat-chogue. GR 5-1371.

HOUSE - In Quogue, 25 min. from Lab. 3 bedrooms, all new kitchen, heating, plumbing & electrical appliances, w/w carpets throughout. Walk to school & shopping. Beautiful beaches & boating. \$130/mo. unfurnished; \$150/mo. furnished. T. Walsh, Ext. 7686.

### CARPOOLS

DRIVER - Wishes to join or form carpool from Plainview, Hicksville, Syosset area. P. Herling, Ext. 2881.

DRIVERS - Two wanted to complete carpool from Babylon, N. Babylon, W. Babylon area. G. Meinken, Ext. 2200.

DRIVER - Wishes to join existing carpool or start new one from Massapequa, Amityville area. H. Rosenthal, Ext. 481.

DRIVER - Wishes to join existing carpool or start new one from Westhampton Beach, Remsenburg area. J. Baum, Ext. 590.

DRIVER - To complete 5-man carpool from Smithtown. Call J. Smith, Ext. 578.

RIDER - Wanted from Bellport or E. Patch. to Lab. E. Potter, Ext. 2456 or 286-9705 after 7 p.m.

RIDER - Seeks ride from Manhattan Mon. a.m. and/or Fri. aft. to Manhattan. Summer student will share expenses. Ext. 671.

DRIVER - To join existing carpool from Bellport. Contact B. Collins, Ext. 565 or AT 6-0893 after 5:30 p.m.

### FOUND

KEYS - 2 on ring, found on Bell Ave.

GLASSES - Sun, black frames, found in Library.

WALLET - Black leather, found in Bank.

KEYS - 2, found in Bank.

SLIPPERS - Childs, found on Tennis Court.

GLASS CASE - Found in Physics Dept.

RAIN HAT - Womans, found in Physics Dept.

GRAPH PAPERS - Found outside Physics Dept.

TIE - Found in Locker room.