

the Bulletin Board

VOLUME 18, NUMBER 48

Published by the BNL Public Information Office

OCTOBER 6, 1965

BNL SHORT SUBJECTS

Theatre Group Meets

There will be a meeting of the Theatre Group on Tuesday, October 12, 8:30 p.m. in the Theatre. A reading from Jack Richardson's "Gallows Humor", will be presented.

Labmobile Demonstration, October 12

On October 12, 1965 from 8:30 a.m. to 5 p.m., the Loctite Corp. will be on site with their Labmobile to demonstrate their products and answer any questions pertaining to same. All laboratory personnel are invited to attend.

Ski Club Meets

Because of the enthusiasm concerning the Ski Club, the first meeting will be held early to get things rolling. The time is Monday, October 11th, at 5:00 p.m., in the Recreation Building. Places to ski, election of officers, and the possibility of instruction for beginners will be discussed. All those interested in learning to ski and doing some serious skiing this winter, come to this meeting.

Rifle and Pistol Club to Set Plans

Plans for the Fall Outdoor Tournament will be discussed at the regular monthly meeting on Thursday, October 7 at 8:00 p.m. in the Recreation Building. Everyone interested in participating in the Tournament should come to the meeting so that definite decisions can be arrived at regarding the course of fire. Practice sessions have been held by the pistol and rifle teams in preparation for the coming season and new members are desired.

Folk Dance Group's First Program

The Folk Dance Group will hold the first of its fall series of programs on Monday, October 11th. We provide the music and instruction; you provide the enthusiasm. All are welcome, from beginners to experts. The dances are held at the Recreation Hall, starting at 8 p.m. The group will meet again on Monday, October 18th, and thereafter on the first and third Monday of each month.

Gymnasium Closed for Month

Due to the preparations for "Visitors' Days" the gymnasium will be closed for all physical activities beginning October 8 and will remain closed through November 8.

GLENNAN TAKES UP AUI REINS



T. Keith Glennan (right), new president of Associated Universities, Inc., stands with Dr. Maurice Goldhaber in AUI's New York offices. Glennan comes to AUI from Case Institute of Technology, in Chicago, where he was president for the past 18 years.

Glennan has a notable background in the administration of research agencies. During World War II he was Director of the Navy's Underwater Sound Laboratory in New London, Conn. From 1950 to 1952 he was a member of the Atomic Energy Commission, and he was the first administrator of the National Aeronautics and Space Administration, his tenure lasting from 1958 to 1961.

In the picture below, Dr. Goldhaber talks with outgoing AUI president, Theodore P. Wright. Wright is chairman of the Executive Committee of Cornell Aeronautical Laboratory and a former vice-president for research of the university.





NOBEL LAUREATE Sir John Cockcroft (left) listens to Robert Powell, head of the Reactor Division, (center) explain the workings of the HFBR. Clarke Williams, BNL's Deputy Director, tunes in on the briefing. In 1932, at Cambridge's Cavendish Laboratory, John Douglas Cockcroft and Ernest Walton assembled the world's first proton accelerator. Using this device they produced the first successful productions of protons with sufficient energy to cause nuclear transformation. This event was the first case of nuclear disintegration brought about by strictly artificial means.

Sir John and Ernest Walton shared the 1951 Nobel Prize for Physics for their work in the transmutation of atomic nuclei with artificially accelerated atomic particles.

At the AGS a Cockcroft-Walton generator, named after its two inventors, is used to provide the first burst of energy to start the protons on their 150,000 mile journey to the target. The first kick is provided by an electrical potential of 750,000 volts, more than 6800 times that of a household electrical outlet.

BNL Bowling News

After the third week of bowling, news has finally emerged from the folds of the keglers.

In the ladies' Pink League, Flo Weiss again seems to be emerging as one of the league's more promising bowlers this season, coming in with an average of 195 last week. Pat Cooper, also of the Pinks, bowled a gross series of 654 — surprising for a gal with a 114 average. The Bloopers hold first place in the ladies' Rose League by a mere

two points. There is a three-way tie for second.

With the men's division — the No Names and the Ah Sos are in a dead heat for the Red League's first place with 14 wins each. J. Allinger, of the Ah Sos, rolled a 221 scratch game and a 584 scratch series last week — the league's highs so far.

The Green League saw a wide variety of scores this past week — A. White bowled high game with a 200. H. Noehren rolled the league's low game for the season with a 105.

CAFETERIA MENU

THURSDAY (Oct. 7)

Entrees

| | |
|--|-----|
| Baked Ham - Glazed Pineapple Ring.... | .65 |
| Beef Stew - Garden Vegetables..... | .65 |
| Breaded Veal Steak - Tomato Sauce..... | .65 |

Hot Sandwich

| | |
|--|-----|
| Hot Pastrami on Rye, Potato Salad, Pickle..... | .65 |
|--|-----|

Special Sandwich

| | |
|---|-----|
| Liverwurst, Tomato, Thin Sliced Onion on Pump., Potato Salad, Pickle..... | .60 |
|---|-----|

FRIDAY (Oct. 8)

Entrees

| | |
|---|-----|
| Broiled Halibut - Lemon Butter Sauce.... | .65 |
| Hot Roast Beef Sand., Brown Gravy - French Fries..... | .75 |
| Tuna Noodle Cassarole..... | .55 |
| Franks & Beans..... | .55 |

Hot Sandwich

| | |
|---|-----|
| Grilled Tuna & Cheese, French Fries, Cole Slaw..... | .65 |
|---|-----|

Special Sandwich

| | |
|--|-----|
| Cheese Hoagie, Celery, Olives, Pickles, Peppers..... | .50 |
|--|-----|

MONDAY (Oct. 11)

Entrees

| | |
|--------------------------------------|-----|
| Creole Franks over Steamed Rice..... | .55 |
| Chicken Pot Pie..... | .65 |
| Salisbury Steak - Country Style..... | .65 |

Hot Sandwich

| | |
|---|-----|
| Knockwurst & Sauerkraut on a Steak Roll, Apple Rings..... | .55 |
|---|-----|

Special Sandwich

| | |
|--|-----|
| Roast Beef on a Roll, Cole Slaw, Pickles | .65 |
|--|-----|

TUESDAY (Oct. 12)

Entrees

| | |
|-----------------------------------|-----|
| Roast Turkey - Sage Dressing..... | .65 |
| Lamb Stew, Vegetables..... | .65 |
| Chili Con Carne - Crackers..... | .55 |

Hot Sandwich

| | |
|--|-----|
| Grilled Ham and Cheese, French Fries, Cole Slaw..... | .65 |
|--|-----|

Special Sandwich

| | |
|---|-----|
| Italian Hoagie, Celery, Olives, Pickles, Peppers..... | .60 |
|---|-----|

WEDNESDAY (Oct. 13)

Entrees

| | |
|--------------------------------------|-----|
| Fried Chicken - Cranberry Sauce..... | .65 |
| Shrimp Creole - Rice..... | .65 |
| Baked Pork Chops - Dressing..... | .65 |

Hot Sandwich

| | |
|--|-----|
| Cheeseburger, Potato Chips, Tomato, Lettuce..... | .50 |
|--|-----|

Special Sandwich

| | |
|---|-----|
| Baked Ham on a Hero Roll, Sliced Beets, Sweet Pickle..... | .65 |
|---|-----|

SOLUTION TO CHESS PROBLEM

- | | |
|----------------------|------------------------------------|
| 1. R - N1 check | |
| 2. K - R1 | 2. B - R6 |
| 3. R - B2 | 3. B x R etc. or |
| 3. R - Q1 | 3. B - N7 check and Mate next |

NOBEL LAUREATE, C.N. YANG, GIVES BROOKHAVEN LECTURE

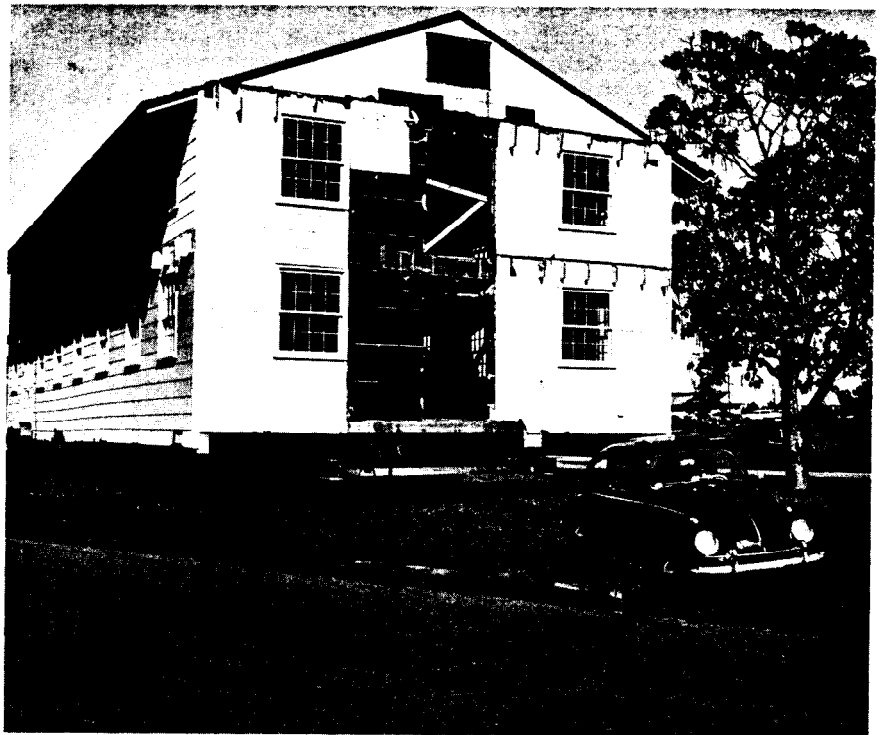
C.N. Yang, Nobel Laureate from the Institute of Advanced Studies will present the 50th in the Brookhaven Lecture Series. Dr. Yang, who with T.D. Lee, received his Nobel Prize in 1957 for his investigations of Parity Laws and their implications for elementary particles, will present a lecture entitled "Symmetry Principles in Physics."

The lecture will be given on Wednesday, October 13, at 8 p.m. in the Lecture Hall. A buffet supper (\$3.00) will be served at the Brookhaven Center before the lecture, beginning at 6:00 p.m. Reservations should be made at least one day in advance by calling Ext. 2302 before 5:00 p.m. or Ext. 2453 in the evening. Refreshments will be available in the Research Staff Lobby following the lecture.



Nobel Laureate C.N. Yang

**WATCH FOR CLASSIFIED
AD SUPPLEMENT**



WHAT TIME DOES THE NEXT DORM LEAVE FOR BROOKHAVEN? — Lew Harson, an architect from Plant Maintenance lends a hand to tow one of the old men's dorms from Columbia Street. The three dorms with accommodations more suited to a Spartan hoplite than a scientist, will be moved to a site behind the women's residence and arranged into a modern, up-to-date, men's residence. Harson designed the new residence so that the three existing buildings could be attached in a "Y" shape, with kitchen and lavatory facilities at the center.

SPORTS CAR CLUB RALLY

The Brookhaven Laboratory Auto Sport and Touring Club will conduct their first rally of the year Saturday evening, October 9, 1965, rain or shine. The "First Night Out" rally is open to members, and BNL employees, their family or guests.

Registration will commence at 7:00 p.m. in the cafeteria parking lot here on site. First car off at 7:45 p.m. The course will take about 2 hrs to run. Bring a flashlight and **any car**. No special equipment allowed. No previous experience necessary. Trophies will be awarded immediately after the event for first, second, third and last place driver and navigator.

Registration fee: BLAST members \$2.00, all others \$3.00.

Non-club members may have \$1 of their fee applied to membership in the club if application is made within two weeks after the event.

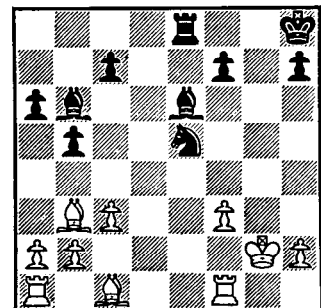
For information call Stan Anderson at Ext. 2254.

Recreation Building Schedule

The building has resumed its normal hours of operation: Evenings, Monday through Thursday, 5 p.m. to 11 p.m.

CHESS PROBLEM

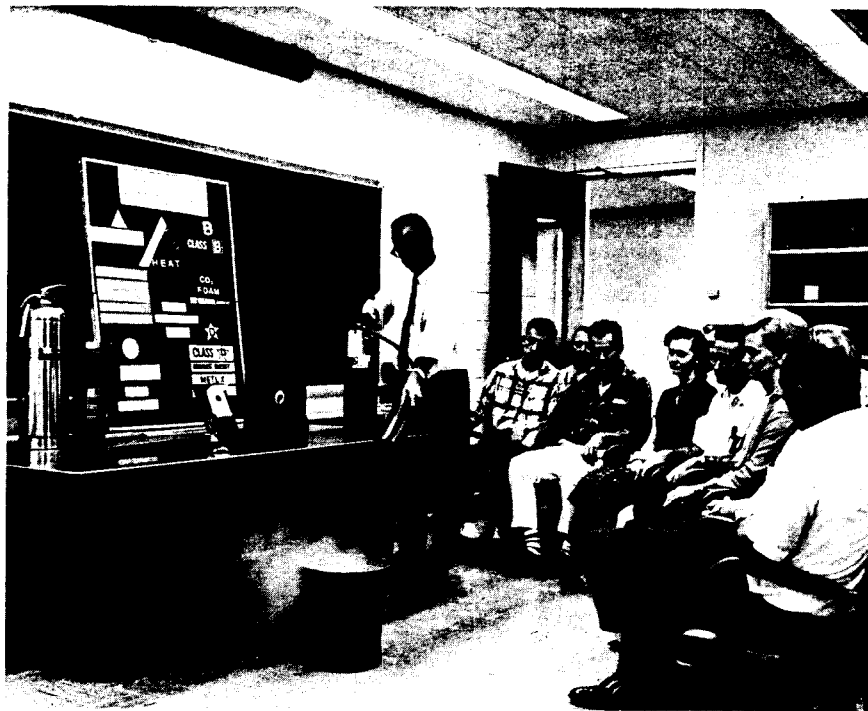
This is a properly controlled bit of feu de joie, which can be run off with no real danger to the exhibitor. If you manage the works correctly, White will find them far from safe. It is probable that you can put him completely on the run. HOW??



Swimming Pool Reopens October 19

The pool which is now undergoing repairs will reopen the week of October 19. Watch next week's BULLETIN BOARD Announcement of times and schedules.

FIRE EXTINGUISHERS KEY NATIONAL FIRE PREVENTION WEEK



Fire Extinguisher Class, given by Dick Jones of the Safety Office, is taught how to use one of the several models of fire extinguishers found at BNL. The one being used puts out fires by means of carbon dioxide gas. Classes will be given to groups of individuals upon request to the Departmental Safety Officer.



Ed Yost (left) weighs a carbon dioxide fire extinguisher to determine whether the unit needs to be recharged. Walter Ceberek recharges a dry chemical extinguisher. Each of the 1742 extinguishers on site is checked about four times a year.

The Laboratory has grown to the point where many items which people take for granted now require a complex system of support. Typical of these are the Laboratory's first-aid fire extinguishers; 1742 portable extinguishers add up to approximately one for every two persons on site. Should a fire occur, the extinguishers must be of the right kind, in the right place and ready to go.

Brookhaven's fire extinguishers are the direct responsibility of the Fire Marshal, Bill Wisnofski. Their placement, their periodic inspection, and their records are part of his everyday problems. In addition to this work load, he must schedule the extinguisher maintenance, which is performed by the Fire Group, must collaborate with the fire protection engineer in setting standards, making selections and approving placement locations, and must supervise the training in the use of fire extinguishers which is given to personnel throughout the site.

The frequency of extinguisher inspection varies with the hazard class of the building in which they are located, averaging about four times a year each. These inspections are performed by firemen loaned to the Fire Marshal's office for this purpose. This task alone represents approximately 2800 man-hours of time each year.

Recent inspections of Laboratory buildings and laboratories have disclosed the use of fire extinguishers on unreported fires. If a laboratory fire extinguisher is used on any fire, large or small, that extinguisher must be replaced. Unserviceable units give a false sense of security and can expose the next user to possible injury and may be ineffectual in controlling the spread of fire.

All employees can be members of the "Lab Fire Prevention Team." Your help is urgently needed. It is urged that you acquaint yourself beforehand with the location of the extinguishers nearest your working area; see that it is not obstructed and is readily available at all times. Locate and familiarize yourself with the nearest fire alarm box and how to actuate it.

If you are working with materials of unusual characteristics, a request to the Safety Services Office, Ext. 591, will provide information concerning the purchase of the proper type of extinguisher.

You are urged to visit the Fire Prevention Week display in the Cafeteria.

the Bulletin Board

CLASSIFIED ADS SUPPLEMENT

FOR SALE

1961 FORD - Galaxie, 4 dr., 6 cyl., stand. trans., well cared for, excel. cond. all around. \$650 (\$100 over trade-in value). M. Declimente, Ext. 2430.

1954 CHEVROLET - 6 cyl., good rubber, new battery, very good running engine, reverse gear needs work. \$85. R. Loper, Ext. 2485.

1956 PLYMOUTH - Belvedere convertible, r/h, ps, excel. cond., tires like new. Don't miss this one. Only \$225. YA 4-3522.

1963 COMET - 2-dr. sedan, light blue, very good cond. \$950. Ext. 2596.

1956 FORD - Fairlane, excel. cond. recently overhauled, inspected, new tires & battery, auto. trans., radio & heater. \$175, firm. AT 6-1192.

1963 CHEVROLET - Belair, stand. trans., 6 cyl., r/h, w/w, 31,000 mi., excel. cond. \$1175. Also, 1963 Chevrolet Belair, 283, auto. trans., ps, r/h, w/w, 28,000 mi., excel. cond. \$1485. S. Wagner, Ext. 618.

1954 CHEVROLET - Belaire, 4 dr., 6 cyl., std. trans., inspected, good mechanical cond., 2 extra wheels. \$100. AT 6-8831 after 6:30.

1957 CHEVROLET - Impala, r/h, good running cond., useful for commuting back and forth to work. \$275. Ext. 402 or 7606.

HONDA 50 - Like new at 1000 mi., still has warranty. \$200. WE 1-6151.

1958 CHEVROLET - 2-dr. sedan, stand. trans., good running cond. \$175. C. Thaper, Ext. 2242 or 2255.

1960 METROPOLITAN - Black w/white convertible top, well shod, new brake linings and shocks, 30 mpg. \$250. Ext. 2795.

1962 PLYMOUTH - Station wagon, 4 dr., 6 pass., auto. trans., r/h, V8, 4 new tires and shocks. AEC gray. Excel. cond., roomy and comfortable. \$1250. Ext. 2795.

1958 CHEVROLET - Station wagon, auto. trans., very clean. Ext. 423.

1950 CHEVROLET - Carryall, beach equipped, two 11.00x15 tires, tubes, and wide rim. 281-7665.

1960 RAMBLER - American, 4-dr. sedan, a good second car. Engine in excel. cond., body & paint job (black) in good shape. \$200. C. Tucker, Ext. 575.

1959 DKW - Good cond., best offer. George, Ext. 2243.

1956 FORD - Station wagon, stand. trans., r/h, good cond. throughout. \$125, firm. Gene, Ext. 2554 or SH 4-3945.

1964 PLYMOUTH - Belvedere, 2 dr., hardtop, auto. trans., ps, 318 V8 engine, dark turquoise. \$1695. AT 9-3838.

1959 DE SOTO - Ps, pb, auto. trans., clean & good cond., reasonable. Ext. 301-45.

1955 BUICK - Super Sedan, green & white, auto. trans., ps, pb. \$75. F. Enright, Ext. 574 after 4 p.m. or JU 8-7145.

1959 KARMANN GHIA - Black coupe, 52,000 mi., good cond. Ext. 7602 or HR 3-4391.

MOTOR SCOOTER - 74 cc., runs well. \$85. Ext. 2536.

1963 PORCHE - Super, W.H. Casswell, Ext. 7677 or HR 3-9223.

1963 TEMPEST - LeMans, convertible, white body and interior, ps, bucket seats, console, radio and heater. \$1350. Ext. 2103 or 379.

1963 CHEVROLET - Impala, 4-dr. sedan, white w/red interior, 283-V8 engine, ps, auto. trans., custom & convenience acces., radio & heater, seat belts. \$1700, firm. Ext. 2528.

1960 TR3 ROADSTER - Excel. cond., wire wheels with Michelin-X tires, overdrive in 2nd, 3rd, & 4th gears, excel. top & side curtains, luggage rack, radio & heater. \$1050, firm. B. Fox, Ext. 2528.

1962 SIMCA - Red, 4-dr. sedan, needs tune-up but otherwise very good cond., dependable transportation. \$600. AT 6-8234.

1961 MOTOR SCOOTER - Sears Allstate, 100 mpg, 45 mph, spare parts at Sears, good cond. \$75, firm. Ron, Ext. 2430.

1960 FALCON - 6 cyl., stand. trans., motor just overhauled, like new. \$450. E. Holz, Ext. 7798 or YA 4-3062 after 5.

1939 MODEL A - 4-dr. sedan, equipped with oversize wheels and tires. Original equipment & wheels available. \$325. Ext. 2513.

1958 CHEVROLET - Sedan, white, economical 6 cyl. engine, stand. trans., radio & heater. \$250. M. Caunter, Ext. 2159 or 751-0926 evenings after 6.

1962 COMET - 2-dr. sedan, r/h, 6 cyl., std. trans. \$600. I. Meyer, Ext. 2222 or WA 9-4326.

24' BOAT - Chris Craft Express Cruiser, 140 hp Chrysler engine. Sleeps 4, galley, stainless steel shaft, head, bottled gas and stove. Excel. cond. 878-0743 after 5:30.

18' SAILBOAT - Cape Cod, dacron sails, nylon spinnaker, excel. cond. \$600. GR 5-0711.

17' BOAT - Century Speed Boat, 100 hp Ford engine converted for marine use - must be installed. Also 4-wheel trailer. Must see to believe. \$250. Ext. 2315 or JA 2-4865.

8' PRAM - \$40. AT 6-0384.

14' SAILBOAT - New rigging and dacron sails, Bluejay class, w/trailer. Also, 4-wheel drive jeep, 1948. Both for \$600. WA 9-4291 after 7.

18' BOAT - 1959 Thompson, navy top, fully equipped, 1962 Evinrude 75 hp Selectric shift with hydraulic lift. Excel. cond. \$895 or best offer. Ext. 561 or 878-2405.

19' SAILBOAT - Narrasketuck. Hull needs work, sails are good, price is low. If you fix it up now, you can start next season early. E. Courant, Ext. 374 or HR 2-0510.

MISCELLANEOUS - Norge refrigerator, 12 cu. ft. w/freezer compartment, \$30. 4 Jet Welbilt bottled gas range, 20" apartment size, \$20. P. Kelly, Ext. 2382 or GR 5-3516.

PIANO - Knabe, painted white, 3 keys need repair. \$45. Andy, Ext. 2516.

BEDROOM SET - Solid oak, excel. cond., including double bed, new box springs, mattress, 2 chests of drawers, night stand & large mirror. \$125. AT 6-1062.

CHIHUAHUA PUPS - \$30. Castro, Ext. 7181.

BLOWER - 1000 CFM. \$3. Castro, Ext. 7181.

COAT - Little girl's winter coat, hat & leggings, emerald green, satin lining, wool interlining, like new, size 2. \$18. AT 9-1883.

PUPPIES - 5 puppies for adoption; 3 beige colored, 2 brown & black with white spottings. Frank, Ext. 7125 or SE 2-8216.

AIRPLANE - 1946 Ercoupe, 415 C, 75 hp, Continental Superhomer VHT-3 12 chan., metal prop., new glass, upholstery, floor boards, paint, clean. Licensed to July 1966. PA 7-5129, evenings, or Ext. 485.

TIRE - New, 590/600-15, Goodyear Safety All-weather, tubeless, 4-ply nylon. \$10. Geo., Ext. 644.

CAMPING EQUIPMENT - Sleeping bags, air mattresses and two-man tent. Used only once, priced for quick sale. Ext. 2795.

MOTOR - Robinson-Myers, 1 hp, 115/230 V, like new. \$40. 878-9679.

MERCURY ENGINE - 1951, out of car, good shape. \$25. Ext. 2315 or JA 2-4865.

ELECTRONIC ORGAN - Shober, 50 tube, Console model (kit), 122 keys, 17 voices, not completed electronically, all schematics, all components mounted, 3½ yrs. old. Best offer. B. Howard, Ext. 2314.

MISCELLANEOUS - E-Z-Y Adjust portable, electric sewing machine, 3 yrs. old, \$20. 12 V, push button, 2 level signal seek car radio from 1956 Thunderbird, best offer. Infant bureau, one side 5 drawers, other side closet with slide-out hanger, \$15. L. Lawrence, Ext. 2354 or HR 2-0721.

ANTIQUITY ARMS - Matched pair of French military bayonets with scabbards, 21" blade, proof marked and serialized. Engraved on blade as follows: "Paris-Oudry, 1879." Excel. cond. \$10. GR 5-5066.

VENETIAN BLINDS - Aluminum slats, like new; (3) 67" wide, (4) 34½" wide, (5) 30½" wide, (2) 22¾" wide. Asking \$7 each for 67" and \$2.50 each for others. Color, white. E. Bailey, Ext. 420 or GR 5-7733.

AKC GERMAN SHEPHERD - 3 mo. old female. Bloodline, excel. for breeding, all shots. JU 8-6767.

C-B RADIO - Globe 100, tuner, No. 254 microphone. \$40. 281-7665.

WASHING MACHINE - Automatic, Norge, 12 lb. capacity, excel. working cond. \$59. Jake, Ext. 2211.

BABY ITEMS - Dresser & lamp in excel. cond. & baby tenda. Sell separately or both. Jake, Ext. 2211.

AIRPLANE - 1946 Ercoupe, 415 C, 75 hp Continental Superhomer VHT-3, 12 chan.; metal prop, new glass, upholstery, floor boards, paint. Clean. PA 7-5129 evenings or Ext. 485.

SKIS - Kneissl White Stars. Used 1 season. Excel. cond., 215 cm., perfect for 6' skier. Bindings are Marker, Simplex toe and Marker turnable heel with long thongs. \$100. L. Corliss, Ext. 2482 or HR 2-1585 after 6.

MISCELLANEOUS - Kenmore washing machine, automatic; Kenmore automatic dryer. Both very good cond. Refrigerator, Norge - old but works well. Bedroom furniture. \$200 buys all. Knudsen, Ext. 2885.

GERMAN SHEPHERD - Female, black and silver, A.K.C., all shots, 3 months old. \$65. F. Volny, Ext. 2382 or JU 8-6767.

ROOF RACK - Engineered for Volvo station wagons but will mount on any compact station wagon. Delux model all chrome and stainless steel, fully rubber padded. Brand new. Original cost \$79.95. Will accept \$50, including full installation. Ext. 673 or 751-1415 after 6.

CLOCK - 24-hour Pennwood Numechron clock, 115 V, 60 cycle, AC. Ideal for ham station. \$5. Whitney, Ext. 7756.

PLAYER GRAND PIANO - Electric, needs repair, can be seen, great challenge for an electronics tinkerer! Ext. 2903.

1959 CHEVY MOTOR - 283 cu. in., completely rebuilt, rings, valves, bearings and cam rods. Ext. 561 or 878-2405.

DOUBLE BED - Walnut finish, box spring, mattress and headboard. Excel. cond. Best offer. Andy, Ext. 2516.

RIFLE - J.C. Higgins, 22 cal., semi-automatic. \$30. J. Paul, Ext. 2390 between 2 p.m. and 10 p.m.

MISCELLANEOUS - Refrigerator, GE, 12 cu. ft. works perfectly. 21" Westinghouse TV, remote control. \$50 each or both for \$90 (bargain). P. Palmedo, Ext. 2741.

TWO RUGS - Nylon, beige, 15x16 and 9x15, 2 yrs. old. \$100 buys both. Ext. 360.

MISCELLANEOUS - Briefcase, tan cowhide, used once. Originally \$18. \$12. Airline luggage case, 3 suiter, excel. cond. \$12. Airguide Barometer, \$5. F. Kaiser, Ext. 673 or 751-1415 evenings after 6.

ARCHERY EQUIPMENT - 33 lb. recurve bow, quiver, glove, arm guard, 20 assorted arrows. Asking \$25. R. Meyer, Ext. 2428 or LT 9-5757.

WASHING MACHINE - 2 yr.-old Norge wringer washer and washtubs, \$40. Ext. 2148 or AT 6-9047.

"KAKEJIKU" - A pair of hanging pictures of original Japanese art. Silk screen on the frame of 72" long and 18" wide, with wood case. Best offer above \$100. Ext. 7648 or AT 6-9191.

MISCELLANEOUS - Table model food slicer, \$5. Portable AM radio, 8 transistors, with carrying case and earphone, \$5. Sand box, 39"x39", with canvas roof, \$6. Ext. 7648 or AT 6-9191.

HOUSE - In top residential area of Sayville. Custom built, 4 yr.-old Cape Farmhouse w/5 bedrms., living rm., dining rm., kitchen, 2 full baths, 2-zone hot water oil heat. Finished basement includes paneled recreation rm., mud rm., & shop. Beautifully landscaped, 1/2 acre treed plot. Many extras. Walk to schools, shops. Assessed in excess of \$30,000. Must sacrifice for \$28,900. Ext. 2955 or LT 9-4360.

HOUSE - 1 1/2 story Cape Cod, 4 bedrms., attached garage, full cellar. On rolling wooded, fully fenced 1/4 acre. Reduced for quick sale, \$18,000. 732-7476.

HOUSE - Cape Cod, in Centereach. 4 bedrm., full dormer, oil heat, storms & screens, fenced yard. \$13,800. JU 8-9189.

HOUSE - Split level, 3 bedrms., 1 1/2 baths, large eat-in kitchen and 23x15 family rm., both paneled in imported luan. New w/w carpeting in living rm. and family rm., aluminum storms and screens, bath enclosure, attached garage, private well for lawn, etc., in addition to city water. Beautifully landscaped, cedar fenced plot 112'x87'. Near shopping and schools. Low taxes, 13 mi. from Lab. \$16,890. Belfiore, Ext. 7782 or SE 2-3957.

HOUSE - Brookhaven Village, Beaverdam Road near Old Stump Road. Six rm. ranch, circular driveway, large screened porch, full kitchen, 2 fireplaces, game rm. Lot 120x300. One block to waterfront, 2 air conditioners. Contact Pittsburgh owner; Zimmerman, 1216 Cochran Rd., Pittsburgh 16, Pa. Price \$27,500.

WANTED

WOMAN - For housework, 2-3 days a week, Smithtown. S. Cohn, Ext. 2891.

CLEANING WOMAN - Reliable and trustworthy, one day a week. E. Patchogue. GR 5-8658 after 6.

GUITAR - Second hand, good cond. T. Morris, Ext. 7739 or SH 4-5096.

CHAIN OR RECIPROCATING SAW - Gas powered, in good cond. Ext. 2191.

GERMAN LESSONS - Competent individual to give German lessons to interested beginner. J. Wasson, Ext. 453.

CAR RADIO - 6 volt D.C., all transistor car radio. Steve, Ext. 7756 or AN 6-6198 after 6.

TRADE - One-year-old, 14 cu. ft., RCA Whirlpool refrigerator for 16 cu. ft. upright deep freeze in same cond. Sisson, Ext. 7677 or HR 3-4319.

HOME - For friendly, 14-months old, house-trained male cat. Owner leaving country. Ext. 2324.

ROOMMATE - Starting November 1st to share completely furnished 4-rm. apartment in Wading River, 10 min. from Lab. \$42.50 includes all utilities except electricity. George Kirsch, Ext. 2416 or WA 9-4702.

INSTRUCTOR - Someone interested in teaching Spanish wife of a visiting scientist English, in return for Spanish lessons. Ext. 2955 or 7708 after 6.

HEDGE CLIPPER - Heavy duty, electric hedge clipper with blade at least 2' long. Ext. 7635 or 286-9450.

CARPOOLS

DRIVER - Would like to join existing carpool or share trip to Brookhaven from Lindenhurst area. Bob Lorelli, Ext. 2428.

DRIVERS - To form new carpool or join existing carpool to Brooklyn southshore via Belt Parkway. S. Senator, Ext. 7195.

DRIVER - Wanted to share trip to Brookhaven from So. Syosset area. Flexible arrangements can be made. M. Tainter, Ext. 2728.

RIDE WANTED - From Bohemia to BNL. Anyone going through this area on Sunrise Highway can help me. S. Smith, Ext. 7676.

RIDE NEEDED - From Munsell Road, East Patchogue to Medical Bldg. one or two days weekly. Willing to drive in small carpool, if necessary. Mac, Ext. 2914 or AT 6-3749 after 5:30.

DRIVER - Wanted to complete existing carpool from Babylon area. G. Meinken, Ext. 2200.

PAYING RIDER - From Dogwood Road, Mastic Beach. D. Kimlin, Ext. 2365.

FOR RENT

FURNISHED HOUSE - Bellport, 2 bedrm., oil heat, available October 15. For appointment call AT 6-0904 after 5:30.