

# BULLETIN BOARD

Volume 20, Number 32

Published by the BNL Public Information Office

August 4, 1966

## Tennis Tourney Approaches Peak

At this writing, the tennis tournament entrants have narrowed the field to semifinal rounds. The mixed double champions will be decided, today, August 4th, at 5:15 p.m. Finalists Andy and Marta Kevey, by defeating P. Palmedo and M. Stangby, 2-6, 6-0, 6-4, will play the survivors of the W. Merkle, H. Connell - L. Passell, J. Johnson match.

**In the men's doubles**, a major upset occurred as unseeded A. Carstens and S. Feldberg knocked off second-seeded S. Bookless and J. Brandon with a 4-6, 6-3, 6-4 victory.

The remaining pairings in the semifinals will pit Auskern and Merkle against Nishihara and Tsai; with the upset-sparked Carstens and teammate Feldberg meeting a tough Kevey-Elmore combo.

**The men's singles** are progressing as forecast; all seeded players have survived. A more detailed report will follow in a coming issue.

The final chapters will be written on the next three successive Thursdays.

*Wanted:* Volunteers from participants to officiate final matches. Please contact Walt La Prairie at the Recreation Office, Ext. 391.

—Walter La Prairie

## BLAST Rally Will Finish In Beach Party

Plan now to attend a special rally on Saturday evening, August 20, sponsored by the Brookhaven Laboratory Auto Sports and Touring Club.

It's special because the rally will end with a cookout on a nearby beach.

**You supply the franks**, a blanket, bathing suit, guitar and anything else required. We will provide malt refreshment, soda and the charcoal for barbecuing.

We start at the Cafeteria. Registration is at 6 p.m. Any type of car can enter. Only two occupants to a car are permitted.

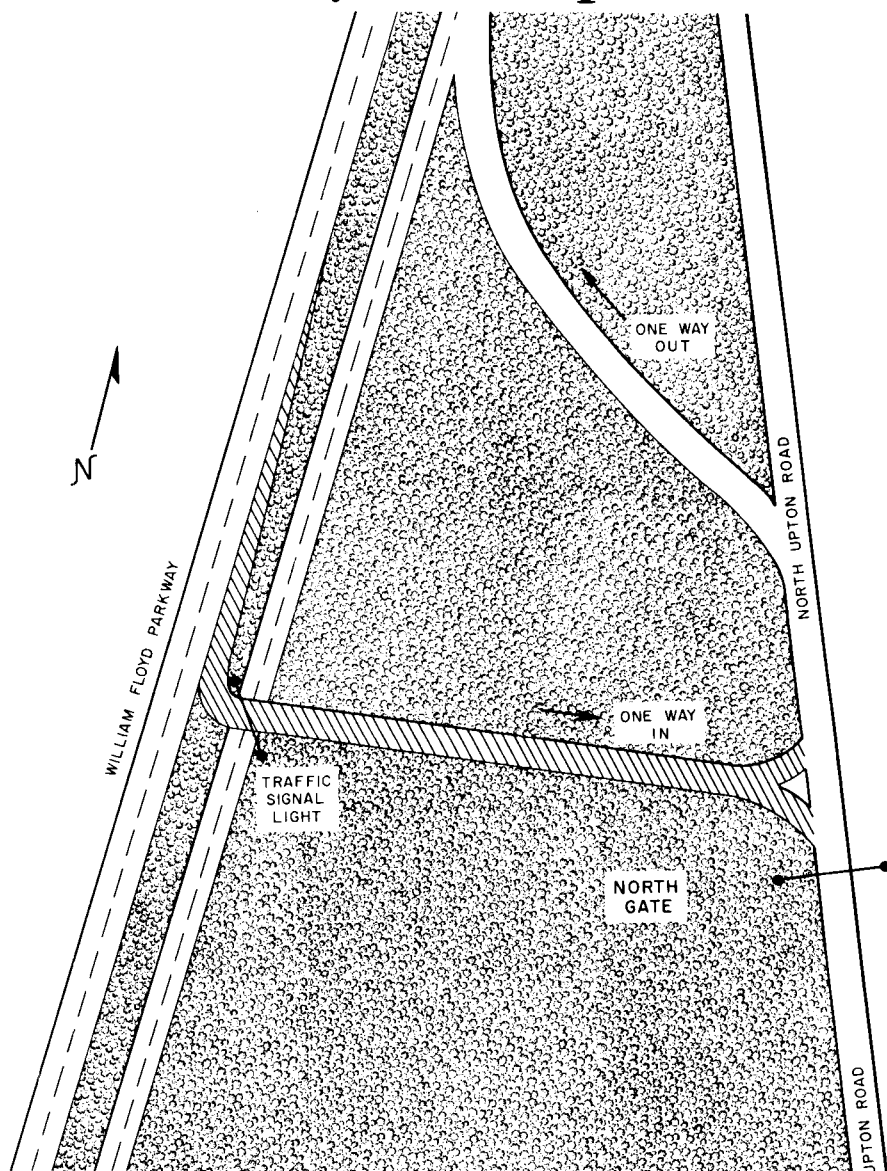
**No special equipment** will be allowed except a slide rule, rally tables, and a stopwatch. A flashlight is a must.

Entry fees, per car: BLAST members, \$3; Lab employees, \$4; guests, \$5. Trophies for the first, second, third, and last will be awarded on the beach at the conclusion of the rally. For further information call Herb, Ext. 686, or Stan, Ext. 2254.

## Concert Cancelled

Due to illness, the concert by Catherine Plasil, scheduled for August 9th, has been cancelled.

## North Entry Gate Open Monday



A new North Entry Gate, located a few hundred feet south of the North Exit Gate, will be available for morning and evening use by employees, commencing next Monday, August 8th.

This new entry gate will be open for use from 7:30 to 9:30 each regular working day (Monday through Friday). It will provide ready access to the Laboratory for those employees using William Floyd Parkway from the North. A traffic-actuated signal light has been installed at the intersection to insure safety. Northbound traffic on William Floyd Parkway may not turn right to enter via the North Entry Gate.

The North Exit Gate will also be open for use by employees leaving the Laboratory Site during the same hours, as well as during the period from 4 p.m. to 6:30 p.m. each regular working day.

Suggestions concerning the use of this North Entry Gate may be made to W. Barnes, Ext. 2392.

## L.I. Leisure Time Booklet Offered by Recreation Office

Newcomers and visitors, who may not be aware of the pleasures of summer living on Long Island, are offered a free booklet by the Recreation Office that will introduce them to some available activities.

Published by the Long Island Association of Commerce and Industry, the 63-page booklet gives directions to state parks; lists marinas and restaurants; catalogues the major stakes races at Roosevelt Raceway; and provides tidbits of diverse information.

These books may be picked up at the Recreation Office, 3 Center Street.

## Driver Improvement Course 7-2975-66



This Driver Improvement Course, being conducted by BNL's Traffic Commissioner William Barnes, was devised by the National Safety Council to improve the road habits of experienced drivers. Chris Imhoff, who heads up the program for the National Safety Council, reports that 99% of those taking the course say that their driving has improved. Supervisors who would like to have their employees take the course are advised to contact Commissioner Barnes. Photo by Bob Walton

## BERA Film Series

Thursday, August 11, at 8:30 p.m.  
Lecture Hall

### Lonely Are The Brave

This film starring Kirk Douglas and Walter Matthau isn't the type of western Hollywood usually produces. In fact, this low-budget drama of a wandering cowboy isn't really a "western" at all.

The lead character, Kirk Douglas, does not believe in the restrictions, rules, and laws of modern society. He is a loner, a drifter who takes life as it comes; who enjoys its freedom and its beauty.

Walter Matthau portrays the local sheriff, who, like it or not, represents society, a society of fences, highways, automobiles and laws.

The pitting of these two against each other isn't really the importance of the film. What they represent is.

Filmed entirely in New Mexico with a screenplay by Dalton Trumbo, "Lonely Are the Brave" is a highly sophisticated film that every moviegoer should see.

This unpretentious film was released in 1961. Most reviewers passed it by, and it was not widely seen. The film is now receiving screenings around the country and is becoming an "American Masterpiece."

### Short: I Wonder Why

This short photographic essay is a hymn to life and love representing the thoughts of a young girl who "wonders why some people don't like me." It was the first prize winner at Cannes in 1966.

—Peter B. Good

## Cafeteria Menu

### Week Ending August 12

Monday, August 8	
Baked Ham/Raisin Sauce	.65
*Southern Fried Chicken	.65
Beef Stew/Noodles	.65
Tuesday, August 9	
Lamb Curry/Rice	.65
*Salisbury Steak/Gravy	.65
Mushroom Omelette	.50
Wednesday, August 10	
*Roast Beef/Pan Gravy	.65
Stuffed Peppers/Tomato Sauce	.65
Swordfish Steak/Butter Sauce	.65
Thursday, August 11	
*Roast Turkey/Dressing	.65
Irish Stew/Vegetables	.65
Spanish Rice	.50
Friday, August 12	
Salmon Steak/Lemon Slice	.65
Veal Patty/Brown Gravy	.65
Corn Beef Hash	.55
Welsh Rarebit/Toast Points	.50

### Touch Football

Entry Deadline - August 12

## Tickets Available Personnel Services

Recreation Office - 3 Center Street

**Discount Tickets** - Tickets may be purchased at a 20 percent discount. Schedules and prices are posted in the Recreation Office. All orders must be placed in person and accompanied by a check or a money order made payable to the theatre at least two days in advance.

*Bellport Gateway Playhouse*

August 2-14 - "South Pacific";  
August 16-28 - "Oliver."

*Westbury Music Fair*

August 9-14 - John Raitt in "A Joyful Noise"; August 16-22 - Howard Keel in "Carousel"; August 22-28 - Liberace in "Mr. Showmanship"; August 30 - September 4 - Lisa Minelli in "The Pajama Game."

**Discount Coupons** - Mail in yourself and save up to 30 percent.

*Jones Beach Marine Theatre*

Through August 31 - Louis Armstrong in "Mardi Gras."

*Madison Square Garden*

August 31-September 18 - "Holiday on Ice of 1967."

*Mineola Theatre*

August 8-27 - Menasha Skulnik in "The Zulu and the Zayda."

*Music Festival at Forest Hills Stadium*

August 6 - The Mamas and the Papas, and Simon and Garfunkel; August 13 - Herb Albert and The Tijuana Brass; August 20 - The Supremes with the Temptations and Steve Wonder.

**Student Exchange Coupons** - For the Metropolitan Opera Summer Concerts being held at Lewisohn Stadium, CCNY. Take to the theatre the day of the performance. Coupon plus \$1 is good for one reserved field seat or coupon plus \$.50 is good for one unreserved center bleacher seat.

August 2 - *Gershwin Night* . . .

August 3 - *Viennese Night* . . . August

5 - *Lucia Di Lammermoor* . . . August

6 - *Ballet Night* . . . August 9 - *Cav*

*and Pag* . . . August 10 - *Rodgers and*

*Hammerstein Night* . . . August 12 -

*Madame Butterfly* . . . August 13 -

*Renata Tebaldi* . . . August 27 - *Ray*

*Charles and his Orchestra with "The Raellets."*

## Second Power Reactor Asked for Indian Point

Consolidated Edison Company has asked the AEC for a permit to construct a second nuclear power plant at Indian Point, in Buchanan, New York. Con Ed with Westinghouse Electric Corporation wants to build a second pressurized-water reactor adjacent to the existent Indian Point Station Unit No. 1.

The new power reactor would have a net electrical output of approximately 873,000 kilowatts.

## Arrivals & Departures

### Arrivals

Wilson, Charles R.	Accelerator
Elman, Mary D.	Accelerator
Lo Destro, Vincent	Accelerator
Horwitz, Richard S.	Applied Math.
Stegeman, William J.	Biology
Romeo, Michael J.	Central Shops
Winter, Frank R.	Central Shops
Kadow, Thomas E.	Inst. & H.P.
Tuggey, James K.	Inst. & H.P.
Butler, Michael A.	Inst. & H.P.
Stapel, Frederick E.	Mech. Eng.
Aggus, John R.	Mech. Eng.
Ierardi, Rosario M.	Mech. Eng.
Dibble, Betty	Medical
Mead, Michele A.	Medical
Bennetsen, Birgit H.	Medical
Dalton, Veronica C.	Medical
Addy, Sherry A.	Nucl. Eng.
Gilbert, Theodore W., Jr.	Nucl. Eng.
Larson, James D.	Physics
Dickerson, Earle O.	Plant Maint.
Baillargeon, Roland J., Jr.	Plant Maint.
Mulderig, Ronald A.	Supp. & Mat.

### Departures

Anderson, Roger A.	Accelerator
Stoeffel, Janet T.	Applied Math.
Graham, Benjamin F.	Biology
Rossmann, Richard J.	Chemistry
Pancer, Guyon	Nucl. Eng.
Enright, Frances E.	Physics
Kovach, Frances M.	Physics
Carhart, Richard A.	Physics
Igo, George J.	Physics
Hayes, Lee	Plant Maint.
Klimczak, Donald M.	Plant Maint.
Weiss, Florence	Purchasing

## Mets Tickets Available

Ticket reservations are being accepted for BERA's box seats at Shea Stadium for September and October.

### September

- 4th, Sunday - Philadelphia
- 5th, Monday - Cincinnati, OH.
- 6th, Tuesday - Cincinnati, N.
- 9th, Friday - Atlanta, N.
- 10th, Saturday - Atlanta, N.
- 11th, Sunday - Atlanta
- 27th, Tuesday - Chicago, N.
- 30th, Friday - Houston, N.

### October

- 1st, Saturday - Houston, N.
- 2nd, Sunday - Houston

### Bridge Group

The Hospitality Committee Bridge Group will meet again on Tuesday, August 9, in the Exhibit Hall, 26 Brookhaven Avenue, (hopefully, a more or less permanent home), from 8 to 11:30 p.m. or so. Everyone welcome.

Newcomers, please don't hesitate to join and meet some of the women interested in making you at home.

### Attention Divers

The August meeting of the "Brookhaven Diver's Club" will be held on Monday night, August 8, at 8 p.m. in the club room at the Recreation Center in the Apartment Area. Plans for the next club dive will be discussed.

## Treasure Hunt Sparks Children's Program

On Friday, July 29, the on-site Children's Recreation Program held their annual Treasure Hunt. Among dozens of costumed Captain Bluebeards and Madame La Fites, the long forgotten treasure of pieces of eight (candy, of course) was dug up from the depths of the area surrounding the Recreation Building.

The Red pirate crew, led by Captain Nur Akcasu, diagnosed the treasure map quickly and started the treasure excavation long before the Black pirate crew, led by Captain Jane Teree, arrived on the scene.



## PUTT-N-PAR

Bogey Olé

The first round pairings were completed August 1; the results will appear next week.

Three flights were established with four pairs in each flight. The results of these matches should prove very interesting. The Committee is working on details for the next after-work golf tournament and get-together. This is set tentatively for Thursday, August 18th.

The Committee is also working on Hole-in-One Insurance, and the Club was notified by the Edwin W. Lane Company of Chicago that anyone making an ace will automatically be entered in their annual awards contest held sometime in September. Also, a hole-in-one rates an engraved card for the wallet.

Mention Hole-in-One and it had to happen. Al Semm, a BGA member, dropped an ace in on the 17th at Heatherwood Golf Course in Port Jefferson Station. Congratulations Al.

Every week more handicaps are being established by BGA members. Our final tournament in September, The Fall Classic Tournament, should have quite a turnout. Watch this column for further information.

The next After-Work tournament is set tentatively for August 18th. Tee off time will start at 4:30 p.m. The Oak Tree and Dogwood nines will be used. There will also be a putting and hole-in-one contest. Beer, potato chips and pretzels will be served to all participants, courtesy of the club management. Other refreshments will be available.

## Movie Tonight

Thursday, August 4, at 8:30 p.m. in the Lecture Hall. BERA Film Series presents "Ballad of a Soldier" and two shorts: "Experiments in Perception" and "Stone Sonata."

BNL NEG # 7-6-15-9

The optician, who issues safety glasses, will be on vacation Monday, August 15th, Thursday, August 18th and Monday, August 22nd - all regular issue days.

No glasses will be issued during this period except that in an emergency, planos or coverall goggles may be obtained from the Stock Clerk in T-100.

**Classified Advertisements**

**Autos, Auto Supplies**

64 CHEVROLET CUSTOM - 2 dr, zero miles on bored & stroked 409 engine, 4-speed Hurst, Pontiac rear. J. Klonaris, 281-5480.

54 JEEP WAGON - 4-wheel drive, special w/hubs, new battery, good cond. \$550. Leon, GR5-8237.

65 CHEVROLET - Corva r Monza convertible, dark blue, r/h, w/w, excel cond. \$1695. 281-3353 after 6.

ACCESSORIES - Nearly new 650-13 whiteside wall tire; Corvaair rim; 60 Corvaair service manual; new fan belt & generator pulley. Ext. 2308.

60 HUMBER SUPER SNIPE ESTATE WAGON - Auto trans, ps, disc brakes, excel cond. Cost \$5200. \$1000. AT9-1235.

59 IMPERIAL - Sky blue, full power, well taken care of, good running auto. \$550. Bob D., Ext. 2380, 2384.

60 VOLKSWAGEN - 70,000 mi in good running cond, needs paint retouching. \$500. P. Reilly, Ext. 7175.

62 VOLKSWAGEN - Micro bus, de luxe model, very good cond. Low miles. \$1150. Charlie, Ext. 2221, AT6-9543.

58 CHEVROLET - Biscayne 6, auto trans, good running cond, body worn. Best over \$150. L. Mingino, Ext. 2296.

65 CHEVROLET - Impala. 2 dr, hardtop, 8 cyl, auto trans, air cond, extras, excel cond. Danzig, Ext. 7662, 7683.

57 FORD FAIRLANE - V3, auto trans, r/h, ps, dual exhaust, body poor, runs well. \$175. Bruce, Ext. 481.

65 PLYMOUTH - Convertible, Fury III, 2 new tires, brake job, must sell, make offer. Ext. 481, 281-9123.

65 VOLKSWAGEN - Fully equipped. \$100 cash & take over payments, \$58/mo for 2 yrs. Pat, Ext. 358.

64 VOLKSWAGEN - Sedan, very good cond, all extras. Chanana, Ext. 2894, 2971, 510.

58 MG - Convertible, runs well, reasonable. Sisson, HR3-4933.

60 FORD FAIRLANE 500 - 6 cyl, r/h, Tudor sedan, 4 new XSS w/w tires, auto trans. \$425. K. Harty, HR3-6916 before 2 p.m.

66 SUZUKI - 80 cc, leaving for college, must sell. \$300. A. Silverstein, Ext. 2912.

MAINTENANCE MANUAL - Vauxhall Series 2, brand new, orig price \$4.50. \$3. Bob, Ext. 2315.

65 VOLKSWAGEN - Blue, excel cond, owner leaving the country. B. Krebs, Ext. 2240, AT6-3545 after 6.

TIRES - 2 almost new 6.70x15 snowtires; 4 used 5.50x15 Firestone. Best offer. D. Harmer, Ext. 7198, 281-8681.

64 SPRITE - Black, r/h, tonneau cover, luggage rack, side mirrors, excel cond, clean body. \$1050. S. Andrus, Ext. 7287.

FOLDING MOTOR SCOOTER - Centaur, American made, unfolds to 60", rides 2, used one season, excel for campers. \$175. HR2-0339.

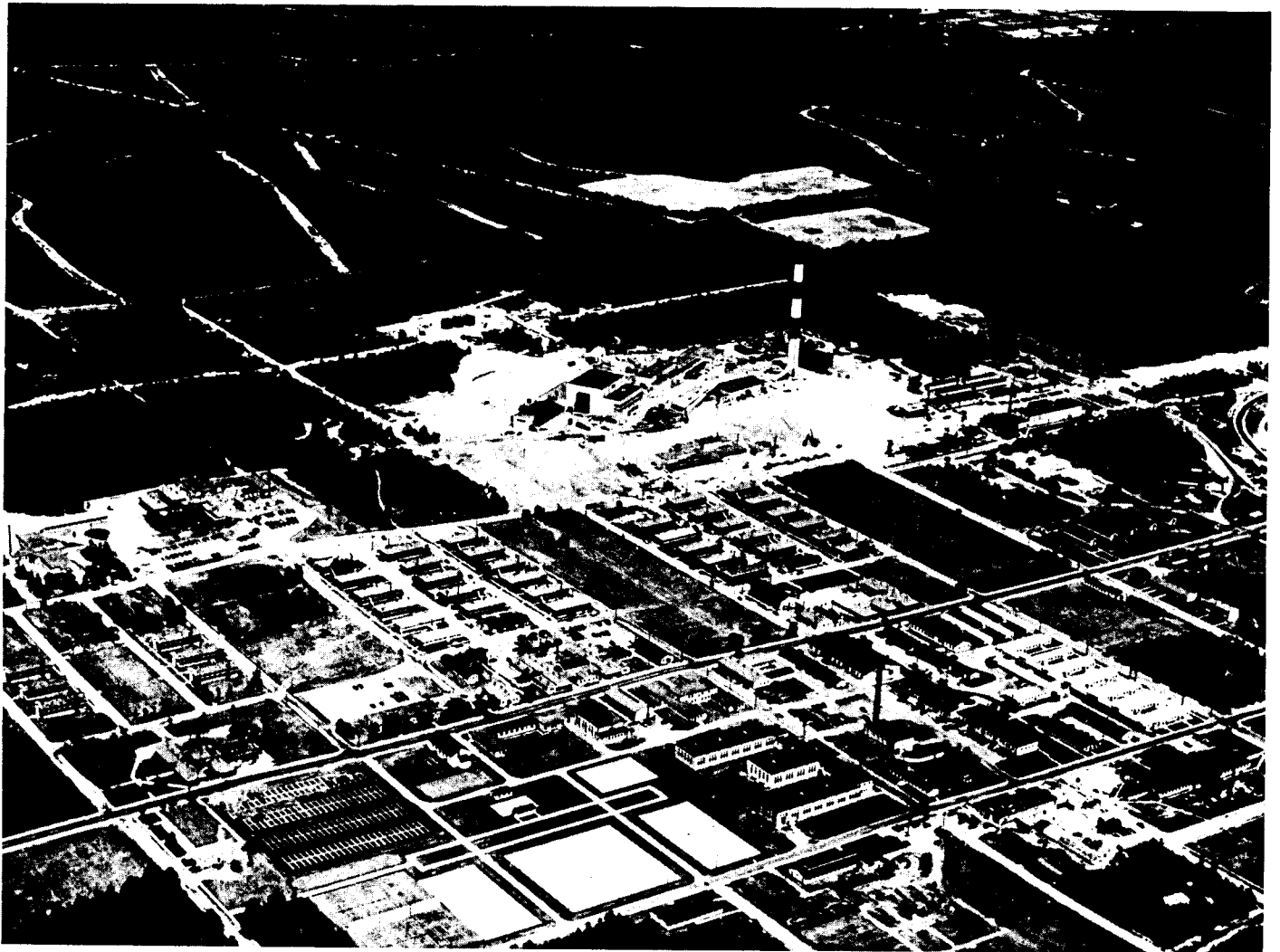
64 VOLKSWAGEN - White w/red int, 4 new tires, excel cond. \$1050. AT6-3317.

57 FORD - Station wagon, 4 dr, 9 pass, good cond. \$225. D. Papa, Ext. 2304, 281-3616.

62 CADILLAC - Excel cond, 29,000 mi, 4 dr. \$2300. D. Papa, Ext. 2304, 281-3616.

65 VOLKSWAGEN - 14,000 mi, excel cond, bahama green/leatherette int. \$ 295. H. McTeague, Ext. 7462.

64 DODGE DART - Good cond, 6 cyl, std trans, r/h, w/w. \$900. P. Mansfield, Ext. 2136.



BNL 1949 (above) - Seventeen years ago, the Lab had the unmistakable look of an army camp except for the raw earth around the almost-completed Brookhaven Graphite Research Reactor. This picture and the one below nearly match - the striped stack is in roughly the same position in each - about 1 o'clock from center.

BNL 1966 (below) - The HFBR dome helps to locate the stack. Several new buildings have been added in the past 17 years and the regimented look of an army camp has been replaced by a less-formal university look. Problem: Find three barracks that are in both pictures. Photos courtesy of Photography and Graphic Arts



BNL NEG # 6-193-66

## Autos, Auto Supplies

(continued from page 3)

53 JEEP WAGON - 4-wheel drive, excel cond, recent clutch & power, ideal for beach or trail. R. Young, Ext. 591.

63 STING RAY - Red convertible, 340, 4 speed, posi, 2 tops, excel cond. \$2700. YA4-3082.

61 RAMELER WAGON - Classic de luxe auto, r/h, avail Sept 5. \$295. L. Green, Ext. 2546, HR3-2764.

65 VOLKSWAGEN - Red w/sunroof, radio. \$1400. J. DiCola, Ext. 7166, 273-4341.

65 HONDA - 50 cc, 600 mi, red/white. \$175. J. DiCola, Ext. 7166.

55 CHEVROLET - 4 dr station wagon, good running cond. \$50. H. Johnson, Ext. 2882.

63 CHEVROLET II - 4 dr, auto trans, r/h, avail Aug 23. \$975. Berman, Ext. 7212, 289-3097.

64 CHEVROLET BISCAYNE - 6 cyl, std, w/extra snowtires, excel. \$1250. Ext. 2309.

8' TRUCK CAMPER BODY - Complete w/gas, electricity, heat, water, sleeps 5, inter, jacks. C. Hedberg, Ext. 7677, 288-3138.

57 VOLVO - Good mechanical cond, many new parts, needs body work. \$75. C. Hamill, Ext. 7400, AN5-3934.

58 CITROEN - Motor excel, body good, hydraulic system overhauled, needs brakes. \$85. P. Lieberman, Ext. 7266, AT9-5643.

## Boats, Marine Supplies

BLUE JAY - Good shape, good price. LT9-1342.

AUXILIARY SLOOP - 4 yrs old, double ender, center-board, diesel, 6 berths, 29, 9½, 2½. Danzig, Ext. 7662, 76E3, 289-0165.

18' SEA SKIFF - 56 Lyman, 65 hp Gray engine, navy top, head, excel cond. \$1800. Trigg, Ext. 2341, AT6-1262.

30' CABIN CRUISER - Custom-built in 40, fiber glass, sleeps 5, elec head, ice box. \$1600. Dick, Ext. 7111, JU5-8179

58 FLYING FINN - 16½', all cushions, life jackets, anchor, 1 paddle, running lights, battery. \$300. Ext. 586, GR5-7372 after 5.

SUN ELEC TACHOMETER - 0-4000 RPM, 8 cyl, 6V. \$10. Ext. 7272.

19' SPORT RUNABOUT - 61 Chevrolet V8 hydro trans, fresh water cooled, bilge pump, full canvas. \$1400. Rcn, Ext. 600, AT9-1003.

15' RUNABOUT - Wood, windshield, elec lights, horn, pol shed deck; also tilt trainer & 25 hp Johnson. Only \$250. Ext. 7118.

20' CHRISTIAN SEA SKIFF - Inboard, lapstrake, s/s radio, head, new top, 9 yrs old, in water. \$1100. R. Ostrom, 281-7665.

14' CRUISERS INC - 16 hp motor, remote controls, navy top life preservers, Little Dude trailer, very good cond. GR5-2409 after 5.

## Miscellaneous

MOVIE EDITOR & SPLICER - 8mm, built-in viewer, new. \$14. E. Schwarz, Ext. 7692.

HEARING AID - Zenith Crusader, never used, originally \$170. Complete w/pearl necklace if worn by a lady. \$40. H. Rosenthal, Ext. 481.

BB GUN - Crossman Model V-350, hardwood stock, slide-in barrel, good cond. \$5. J. Shreeve, AT6-8807 after 5.

MISCELLANEOUS - English "Marmet" Pram, beautiful cond, \$40; sturdy infant car seat, \$4; 61 Coldspot refrigerator, 12 cu ft, \$50. Frisken, GR5-1084.

MISCELLANEOUS - 3 modern formica tables, 1 coffee & 2 end, \$30; 2 oriental pictures in frames & 2 shadow boxes, \$10. Charlie, Ext. 2221.

SHOPSMITH - Multipurpose power tool, 12 yrs old, excel cond, many attachments, instruction book. \$75. Goldberg, Ext. 2449, HR3-2281.

CHESAPEAKE BAY RETRIEVER PUPS - Championship bloodlines, field trail & bench, AKC registered. H. Richardson, AT6-8550.

GERMAN SHEPHERD PUPPIES - Black & silver, AKC. JU8-6767.

CARRIAGE - Car bed, good size & cond. Beller, Ext. 2515.

WASHING MACHINE - Hoover, semi-automatic, 1½ yrs old, ideal for small family or single persons. \$75. AT6-8733.

MISCELLANEOUS - Transit, like new; also miscellaneous men's clothes, some new, neck 15½. S. Janater, GR5-4729.

RUGS - All wool, 27" wide, 3 runners 7' long & one 10' long, 3 mos old. Roe, 286-2280.

STORM WINDOWS & SCREENS - Wood, all sizes, good cond, your choice. \$1 ea. W. Hamilton, Ext. 2484.

WASHING MACHINE - Westinghouse, front loader, 3 yrs old, good cond. \$50. Ext. 7248.

CAMERA - Exa II 35mm SLR plus CdS meter & fan-fold flash. Reduced to \$45 for complete outfit. Ext. 591.

HAND GUNS - S&W K-38, large grips. Colt match target woodsman, custom target grips, 22 cal. NRA, good cond. P. Buhl, Ext. 354.

WINDOW SCREENS - Aluminum (7) 36x51, (3) 32x51, (4) 24x39 w/brackets. Reasonable. Bob, Ext. 2315, AT9-0357.

BABY ITEMS - Wearever coachette w/mattress, storm shield, storage cover, \$35; bassinet, car bed, cradle combination w/mattress. \$5. Giller, JU7-4515.

TELEVISION - 19" table model w/stand, very good. \$50. Giller, JU7-4515.

TYPEWRITER - Olivetti Lettera 22 model, 8 lbs, rarely used. \$30. Ext. 7238.

CHASSIS SHOP MANUAL - 65 Pontiac, new. \$5. K. Weiss, Ext. 411.

MISCELLANEOUS - Baby stroller, \$6; bunk, trundle bed set. Complete \$60. 286-9747.

MISCELLANEOUS - Mature 21" TV & stand, \$35; lightweight baby carriage; child's clothes chest, white; upholstered furniture needing work. AT6-1023.

HAIR DRYER - Needs cap, General Electric. \$5. Ext. 7238.

MISCELLANEOUS - Encyclopedia Britannica Jr, 65, still boxed; ladies ski boots, Austrian, size 6-6½, never used. AT6-0414.

APPLIANCES - Hotpoint dishwasher, 3 yrs old; Frigidaire de luxe washer, excel cond. Moved, must sell. AT6-0414.

LIVING RM FURNITURE - Sectional sofa, 2 chairs, all upholstered, 1 bench. S. Krasner, Ext. 2309.

MISCELLANEOUS - Sears Craftsman 10' radial arm saw w/2 blades, like new, \$140; elec sewing machine in console, \$7.50. 286-9747.

MISCELLANEOUS - Quart Mason jars, \$1/dozen; reel-type lawn mower, \$15; 12x12 toddler pen, \$8. D. Glick, Ext. 386, 281-8952.

DYNA MONOPHONIC PREAMP - 2 mono amplifiers, 15 & 20 watts. \$25 & \$30 respectively. Can power preamp, guaranteed. P. Lieberman, Ext. 7266, AT9-5643.

BOY'S BICYCLES - Schwinn, 20' & 16' w/stabilizers, good cond. \$20 & \$8. Berman, Ext. 7212, 289-3097.

PORTABLE TV - 19" Philco, on stand, 10 mo old, like new. \$95. Berman, Ext. 7212, 289-3097.

NEW GORHAM SILVERWARE - Melrose pattern, 2 or 4 place settings 20% off list. P. Lieberman, Ext. 7266, AT9-5643.

SNOW TIRES - 7.75x14, tubeless, very good cond, used one season. Both for \$18. Al, Ext. 2309.

FURNITURE - Kitchen table, 4 chairs, \$30; double bed, 2 chests, mirror, chair. \$75. Townsend, Ext. 2309.

ACOUSTIC RESEARCH SPEAKERS - Model 2AX, used, \$85; Model 4, new \$42.50; both walnut. P. Lieberman, Ext. 7266, AT9-5643.

MISCELLANEOUS - 4' steel wardrobe, 2 shelves, mirror, \$30. Townsend, Ext. 2309.

SADDLE HORSES - 286-3647 after 8 p.m. & weekends.

AMPLIFYING SYSTEM - Harmon-Kardon Citation II 120 watt stereo amplifier; Scott stereo preamp. Cost \$400. \$200 guaranteed. P. Lieberman, Ext. 7266.

CAMERA - Ansco 120, f 4.5, 1/300 sec, built-in rangefinder, flash, case plus filters & close-up lenses. Mel, Ext. 2817.

FREE LOVE - In exchange for home. 9 wk old affectionate, black & tan, trained kitten needs family. Anderson, 286-9484.

REFRIGERATOR - Coldspot 200 w/freezer, copper-tone, right hand door, 2 yrs old, \$640 new. Asking \$400. Bob, Ext. 2428.

COLLECTOR'S ITEM - Seth Thomas chime mantle glass-encased clock, late 19th Century, need repairing. \$50. 286-8018 after 6.

RECORD PLAYER - 4 speed. \$9. Berman, Ext. 7212, 289-3097.

SURFBOARD - Must sell, no dings & in very good shape. \$60. B. Petersen, Ext. 2376, 286-1366.

CONTEMPORARY BEDRM SET - Full-side bed w/mattress & box spring; matching chest. \$60. Ext. 7186.

DIVER'S SPECIAL - Healthways wet suit, nylon lined; 2 Voit spear guns; weight guns; weight belt; fins; 2 snorkels. \$55. SE2-4661.

MISCELLANEOUS - Mattress & box spring, \$10; auto washer, Sears best, \$25; infant chair, \$2. Fleitman, Ext. 344, AN5-7726.

SWIMMING POOL - 3x12, needs new liner. \$5. Ext. 2536.

**Houses**  
MILLER PLACE - 3 bedrm ranch, 2 car garage, s/s, oil h/w heat, 2 yrs old, 1 block from school, beach rights. HR3-7460 after 6.

NORTH PATCHOGUE - 4 bedrms, 2 baths, rec rm, 1½ garage, large corner lot, must see. Paul, Ext. 2222, GR5-4394.

BAYPORT - 3 bedrm Cape, oil h/w heat, s/s, appliances, full basement, landscaped, good location. \$13,990. Becker, Ext. 383, HR2-0832.

SHOREHAM - 3 bedrm split level, large rec rm paneled, den, 1½ bath, garage, s/s, fenced lot 75x125. \$14,500. K. Conkling, Ext. 2892.

SHIRLEY - 6 rms, oil heat, appliances, full basement, 100x100, landscaped, 10 min from Lab. \$15,000. Villacara, Ext. 7248, 289-0124.

SOUTH COUNTRY SHORES - Long low brick ranch, 1½-tile bath, 2-car garage, 3-zone heat, 3 bedrms, 75x36. GR5-4729 after 6.

PATCHOGUE - 80x159, 2-3 bedrms & den, living rm, dinette, kitchen, bath, 2 appliances, oil h/w heat, garage, full basement. \$16,000. 475-8485.

MASTIC - 3 bedrm ranch, 1½ garage, 200x228. \$600 cash; assume 5¼% GI mortgage. 281-6632.

**For Rent**  
APARTMENT - Bellport Village, first floor, 4 rms (1 bedrm), jalousied porch & attached garage. \$125/mo w/utilities. Avail Sept 1. E. Webster, AT6-8850.

APARTMENT - Furnished, ideal for 2 people. \$105 w/utilities. AT6-9524.

FLAT - 4 rms (2 upstairs bedrms), sleeping porch, full bath, off-street parking, 15 min to Lab. AT6-3724, GR5-1704, evenings.

HOUSE - Shirley, beautifully furnished, 2 bedrm, balcony style, carpeted throughout. Avail Sept. Lease. Dan, Ext. 613, 281-3383, 281-8910.

APARTMENT - Shirley, private, attractive, furnished, near shopping, 5 min from Lab. Adults. 281-8044.

APARTMENT - 20 min from Lab, 3 large rms, avail mid-Sept. \$110 inc all utilities. B. Carciello, Ext. 2200, AT9-2159.

HOUSE - Port Jefferson (Harbor Hills), furn 4 bedrms/unfurn 3 bedrms, playrm, beach, avail Sept 66 to 68. Ext. 2546, HR3-2764.

APARTMENT - Yaphank, 5½ rms, unfurnished, garage, basement, 1 yr lease, \$135 inc utilities. Avail Oct 1. E. Grist, Ext. 383, YA4-5064 after 6.

APARTMENT - Large 4 rm, close to central Patchogue, avail Sept. \$125/mo, inc heat. Ext. 2309, GR5-4866.

**Wanted**  
UNFURNISHED APARTMENT - Business couple, vicinity Patchogue, by Sept 1. Reasonable rental. Ext. 586, GR5-7372 after 5:30.

BABYSITTING JOB - Ridge resident (local), ideal for families living on Lab site. Day/evening. G. Betz, Ext. 2389, YA4-3236.

APARTMENT - Unfurnished, vicinity of Smithtown, 3 rms. Early occupancy. Ext. 7248.

ROOMMATES - 2 female, for modern Smith Point house, 3 bedrms, waterfrontage, furnished. \$150/mo w/o utilities. B. Norman, Ext. 2498.

SEAMSTRESS (or equivalent) - To hem dresses at non-professional rate. Ext. 524.

AUXILIARY POLICEMAN - Brookhaven Township, out of Patchogue, 5th precinct, 21 yrs min, w or w/o pistol permit. E. Speiss, Ext. 7460, AT9-1780.

BICYCLE SEAT - For small child. Dan, Ext. 613, 281-3383.

TENT HEATER - Heat pal or equivalent. Bob, Ext. 691.

CALIFORNIA ANYONE - Save \$ by driving our auto across country on or about Aug 21. Ext. 665, AT6-1023.

LAWN FURNITURE - Outside Redwood & outside lawn umbrella. Bob, Ext. 2428.

BABYSITTER - Part time, Aug for 3 yr old girl, on site. Mrs. E. Hatch, Ext. 7714.

COINS - Collector wishes to purchase all U.S. coins which are collectable (old, silver dollars). J. Giordano, Ext. 2324, 543-6683 after 6.

CAMPING EQUIPMENT - Coleman lantern & a burner gas stove. J. Newton, Ext. 2895.

DEHUMIDIFIER - In good operating cond. H. Sauter, Ext. 7272.

**Carpools**  
JOIN OR ORGANIZE - From Westbury, summer only. Dave, Ext. 7661.

PAYING RIDER - From Bayview Garden Apartments, 234 River Avenue, Patchogue. Helen, Ext. 479.

WISH TO JOIN - From Patchogue area. V. Manzella, Ext. 2287.

DRIVER - For established carpool from East Islip vicinity. Ext. 2536.

DRIVER - Babylon, Bay Shore, Lindenhurst area, to complete 4-driver carpool. P. Mansfield, Ext. 2136.

## Classified Ad Policy:

The use of the classified section of *The Bulletin Board* is a privilege accorded to individuals employed at the Laboratory, to retired employees, and, in some cases, to the families of recently deceased employees. The following rules apply to all three classes of users (hereafter referred to as employees).

1. All items for sale or rent must be the property of an employee.
2. No want ads will be accepted for property associated with a full or part-time business. This includes merchandise, automobiles, real estate, etc., acquired for purposes of resale.

3. Ads must be typed or printed on the form provided in 20 words or less, and must be received by 12:00 noon on Friday for inclusion in the next week's newspaper. Only ads submitted on this form will be accepted. Additional copies of the form are available in *The Bulletin Board* office. If there is no Lab Extension where the person may be reached, a home phone may be substituted. *Ads which do not conform to the above standards will be discarded.*
4. Ads are run on a space-available, first-come-first-served basis; ads not carried because of space reasons will be held for inclusion in the next issue.
5. Ads are run only once; if you wish to repeat an ad it must be resubmitted.

<input type="checkbox"/> For Sale: Autos & Auto Supplies	<input type="checkbox"/> Carpools	Check <input checked="" type="checkbox"/> the heading (1 only) applying to your ad
<input type="checkbox"/> For Sale: Boats & Marine Supplies	<input type="checkbox"/> For Rent	
<input type="checkbox"/> For Sale: Houses	<input type="checkbox"/> Wanted	Print or type your listing in the space below in 20 words or less.
<input type="checkbox"/> For Sale: Miscellaneous	<input type="checkbox"/> Lost Found	

(Name & Phone No. To Call)

Your Name: ..... (Print) ..... Lab Phone Ext: .....

Lab Address: ..... (Print) ..... Signature .....

send to: BULLETIN BOARD, 40 Brookhaven Avenue