

BULLETIN BOARD

Volume 21, Number 18

Published by the BNL Public Relations Office

May 11, 1967



Left: Samuel Goudsmit, editor of *Physical Review*, and right: John Maddox, editor of *Nature*.

Science and Scientists Under Scrutiny by Editor of *Nature*

According to John Maddox, Editor of *Nature*, "The research effort in the United States is so great in comparison to other nations that any reduction in the ratio of pure to applied science still leaves the pure science effort the greatest in the world."

"In England we were sold the bill of goods that if you have lots of science you will be prosperous. Then we were told that if you have lots of technology you will become prosperous, but apparently, the balance between the two has little to do with prosperity."

Maddox is here in the United States for a visit — just to see what is going on, and to renew old acquaintances. At Brookhaven (the only national laboratory he visited) Samuel Goudsmit, Editor of the *Physical Review*, was his host. When Maddox was science-writer-in-residence at Rockefeller University, he and Goudsmit developed a lasting friendship.

Before coming to Brookhaven, Maddox spent several days in Washington visiting government agencies and the National Science Foundation. He met with many officials and scientists with whom he had never had personal contact before.

After leaving Brookhaven, Maddox left for the Boston area to visit MIT and Harvard, and then on to see Expo '67 in Montreal before returning home.

As Maddox has not yet finished his first year as editor of *Nature*, he is still described as the "new editor." Since he started last July, many changes have been made in this most influential science journal. Without much fan-fare, the entire referee procedure has been speeded up and now a paper is generally printed within one month of its receipt. A great believer in brevity, Maddox insists that non-essential phrases be deleted from contributions with or without the permission of the author.

"We insist that scientists write for us in English, rather than in some special language known only to themselves or to a

few of their laboratory colleagues," Maddox said. "Translation into clear and simple prose very often cuts 1,000 unintelligible words down to 100 meaningful ones." (Editor's note: Amen.)

Nature is not a specialty journal. It covers the whole spectrum of scientific endeavor. The four assistant editors are a geophysicist, a botanist, a metallurgist, and a physiologist. The panel of 2,000 reviewers includes over 200 who are available for telephone consultation.

Maddox has been crusading for more exacting and creative editing of established science journals as an alternative to the growing systems of preprint and pre-preprint publication that carry no criteria of excellence.

Before coming to *Nature*, Maddox was Science Editor of the *Manchester Guardian*, Science writer for the *Washington Post*, Professor of Astronomy at the University of Manchester, and author of several books. He met his wife, a Massachusetts newspaper girl, at an Atoms-for-Peace Conference, and they live with their three children in a house in Roehampton, near London.

Suffolk Museum Shows Patterns in Science

Photographs taken during the daily routine at laboratories and research centers form the major part of the exhibit at Suffolk Museum titled "Patterns in Science."

This "art by coincidence" consists of models, materials and photographs collected from many places including BNL. Dr. Robert Conard, a member of the committee has arranged for color photographs to be included of such subjects as crystal patterns and cell structure.

Other exhibits include material loaned by General Electric, Gyrodyne, Clark University, Sperry, Western Electric, Fairchild, Kodak, Grumman and the State University at Stony Brook. The exhibit will be open at the museum in Stony Brook from 10 a.m. to 5 p.m. every day until July 30.

Johnny Carson Gets Lab Help For Show

When Johnny Carson, of NBC Tonight Show fame, is stuck for an accurate answer to a scientific question, he calls BNL.

On Monday night Carson showed viewers an unusual toy that is on sale in Paris shops. Two glass cylinders filled with liquid have an hour-glass suspended in each. One hour-glass is at the top of a cylinder, and the other is at the bottom. When the cylinders are inverted, the top hour-glass goes to the bottom, and the bottom hour-glass goes to the top when the sands of each run out.

Carson said on the air that he did not understand how the toy worked, and as soon as the show ended, he began to get calls and telegrams of explanation. As none of the explanations seemed to agree, Carson had one of his staff call BNL for the right answer.

After much research by the Public Relations Office and the Information Office, the answer was found in a back issue of *Scientific American*.

When the Carson show was called to give the answer to them, they had already called *Scientific American*, but that magazine was not able to find any reference to the toy. So . . . Brookhaven told Carson, who told *Scientific American*, where to look for the answer, and then to save time, Brookhaven read the answer to the Carson staff.

The answer, as found in the September 1966 issue is rather complicated, but involves both friction and weight of the contained hour-glasses. One hour-glass is slightly heavier than the water it displaces and normally is at the bottom of the tube. The other hour-glass is lighter, and is normally at the top of the tube. Both hour-glasses are held in position when the sand is in the upper half by friction with the sides of the enclosing cylinder.

Hopefully, this will satisfy Carson's viewers, and allow for peaceful sleep without visions of floating hour-glasses to disturb their slumber.

Parking Restricted at Rear of Cafeteria

Recently many unauthorized people have been using the small parking lot to the rear of the cafeteria, according to William Barnes, Security. This area is meant only for the servicing of the cafeteria: pick-up and delivery, cafeteria employees, the coffee wagon, and maintenance of the building. Recent congestion in this area has not only hampered normal cafeteria operations, but also caused damage to three private vehicles. After parking in this area one must enter the building through the rear door and pass through the kitchen, an area which is not designed or equipped to handle this kind of traffic.

The area surrounding this rear lot is occupied by the personnel and equipment of the contractors constructing the new cafeteria and lecture hall complex.

All cafeteria customers are reminded to avoid this area completely and to utilize the main parking lot across Brookhaven Avenue. This lot is adequate in size and convenience and has been specifically designated for this purpose.

Two Appointments Received by Cowan

Dr. Frederick P. Cowan, Head, Health Physics Division, has been elected to membership in the National Council of Radiation Protection and Measurements (NCRP) and also appointed by the Federal Aviation Agency to the newly created 11-man committee to advise on radiation problems of high-altitude flight in supersonic transports.

The NCRP traces its history back to 1929, with the formation of the "Advisory Committee on X-ray and Radium Protection." In 1964, its work in establishing standards in radiation protection was recognized by the United States when Congress established the present Council as a non-profit, federally chartered corporation.

Members of the Council voluntarily contribute their services and represent the most knowledgeable thinking in the field of radiation protection standards. Nationally, the NCRP provides scientifically based recommendations for radiation control in industry, medicine, public health and government, and internationally it provides the foundation for U.S. efforts in cooperative programs of radiation protection and measurements.

Dr. Cowan joined BNL in 1947, the same year the Laboratory was born. Since coming to BNL, his research has centered on bioassay techniques, fallout studies, accelerator health physics dosimetry, and reactor safety.



Cowan is a member of the International Commission on Radiation Units and chairman of its Task Group on Neutron Instrumentation; member and former president of the Health Physics Society; former chairman of the American Board of Health Physics; member of the NCRP subcommittee on heavy particles; and member of the AEC Advisory Panel on Accelerator Safety.

Also on the NCRP Council from BNL is Associate Director, Dr. Victor P. Bond, who, along with Cowan, also was appointed by the FAA to the new high altitude flight radiation panel.

Chem. Bldg. Finalist For Lab of the Year

The new Chemistry Building at BNL was chosen one of the finalists in a competition for "Laboratory of the Year."

The contest, sponsored by *Industrial Research*, was judged by members of the magazine's staff, and a committee of prominent architects. The winner was the Bell Telephone Laboratory in Holmdel, New Jersey, designed by Eero Saarinen, architect.

The Brookhaven Chemistry Building was cited as one of the outstanding finalists in the competition.

Iranian Tribe Starts Trek



Members of Iranian migratory tribe pack camels before leaving to search for new grazing land. Charles F. Dunbar, Jr., who gave an illustrated lecture on his experiences with the tribe, joined the migration for one week last year.

International Postal Rates to Increase

An increase in international surface and airmail rates went into effect Monday, May 1, Postmaster Steve Garrett announced recently.

The new international rates, he said, will not apply to mailings for members of the Armed Forces overseas. Domestic postage rates are applicable to mail addressed through APO's and FPO's.

The rate increase for both surface and airmail - averaging 13% - are needed to help offset a deficit of about \$16 million in international mail operations.

Specific information on the new international rates can be obtained from the service window at the post office.

Some of the increases are: airmail letter to Central America and Caribbean area from 13¢ a half ounce to 15¢; airmail to Europe and Mediterranean Africa from 15¢ a half ounce to 20¢; most letters going by surface transportation to all nations (excluding Canada and Mexico) increased from 11¢ to 13¢; and, international post cards raised from 7¢ to 8¢.

Rental Cars Now Available On Site

Three rental cars are now available from the Mobil gas station on site. The cars may be rented by the day, or for longer periods at rates that are quite reasonable.

The Mobil station, operated by Paul Lindsey, is open until 6 p.m. every day except Sunday. A Comet sedan rents for \$7.00 per day plus ten cents per mile. The current taxi rate for a trip to Patchogue is \$6.00 each way, so a car rented for the 36-mile round trip for \$10.60 will allow for a savings of \$1.40.

Rental fees may be covered by a Mobil credit card, American Express or Diners Club. The cars are supplied by Lyons Car Leasing of Riverhead and Coram, who also operate from MacArthur Airport.

Further details on the plan can be had by calling the Mobil station at Ext. 2247.

Sick Leave Pay To Be Computed Automatically

Starting June 1, sick leave pay will be automatically excluded from Federal and State income tax withholdings. An employee will no longer have to specifically request this information from the Payroll section.

Before qualifying for this exclusion, an employee must be on sick leave for thirty consecutive days. The waiting period applies even though the employee was hospitalized or injured. For calendar 1967, the amount of excludable sick pay will appear on the W-2 forms in the space provided.

Brubeck Concert Draws Fans of Progressive Jazz

More than 700 people attended the BERA special event last Saturday in the BNL Theatre, when Dave Brubeck led his quartet in an evening of progressive jazz.

Brubeck arrived on site at about 6 p.m. for a rehearsal with the rest of the quartet before the show started. In the theatre waiting for him were Ed Sayre, John Butterworth and Larry Jones who were setting up lights, and Jack Craig and Jim Pontieri who put the sound system in operation.

A Baldwin concert grand piano had been rented for the occasion, and George Sabine was waiting for the piano tuner to come and check that no damage had been done during the move and set-up. John Binnington greeted Brubeck and his son Mike when they arrived at the theatre, and made sure that all arrangements had been made to Brubeck's satisfaction.

While Brubeck was waiting for the rest of the group to arrive, he told of some of the other concerts he had had during the past few months. He recalled a concert in the Redstone Arsenal where tickets sold for \$20 each. At another concert in Bavaria he was escorted by armed guards, and played to an audience that was also armed in this ceramics factory.

"I always get lost when I come to Long Island" said Brubeck. "I just can't get used to going east from New York. It seems that you should be able to go only North and South from the city. Whenever I go to Boston from Connecticut, I want to go North, but I find I have to go East."

Brubeck and the rest of the Quartet moved to New York a few years ago after headquarters of the group was moved from California. The other members did not seem to have as much trouble finding the Lab as did their leader.

The program opened with a short introduction by Alf Christoffersen of BERA, and immediately went into the business at hand with *Tangerine*. Playing without a break for almost an hour, the group did a wonderful job with each member doing a solo during each number. At the end of the second half of the program, Paul Desmond played his own solo on the Sax to end a full evening of progressive jazz.

Apportionment Can Change in May For TIAA-CREF

Each year, during the month of May, participants in the Laboratory Retirement Plan may elect to change the apportionment of premiums paid to TIAA and CREF.

Those who have previously applied all premiums to TIAA, the fixed annuity, may have up to 75 percent of future premiums applied to CREF, the variable annuity. Participants may also reduce or terminate premiums being applied to CREF and increase their TIAA premiums accordingly.

All participants who wish to change current percentages must make application at the Personnel Office prior to June 1. Changes will be effective July 1.

Alberger Presents Paper

Dr. David E. Alberger will give a colloquium at Indiana University in Bloomington, Indiana, on Wednesday, May 10. His subject will be: Gamma Ray Spectroscopy in Van de Graaff Research. Dr. Alberger is a member of the Physics Department.

Our Man in Ankara

Ankara, May 2, 1967 — Things are beginning to settle down a little now that we have everything fairly well organized, but all of us are kept quite busy as there is a great deal of interest in all aspects of the exhibit, and groups are coming in from as far away as Istanbul, which involves an overnight trip on a somewhat rickety train.

Both the gamma facility and the reactor have a very full schedule of experiments, and this means that I get these groups into the TIC for information and technical film showings, as well as the regular stream of scientists, educators, businessmen, and government officials who are seeking information.

In the public portion of the exhibit, they have been averaging 5,000 visitors per day, which is just about as many as can be handled comfortably. Unfortunately, some smart huckster has established himself near the entrance with a stall where he sells sunflower seeds, which the public appears to enjoy chewing the way Americans chew popcorn and gum.

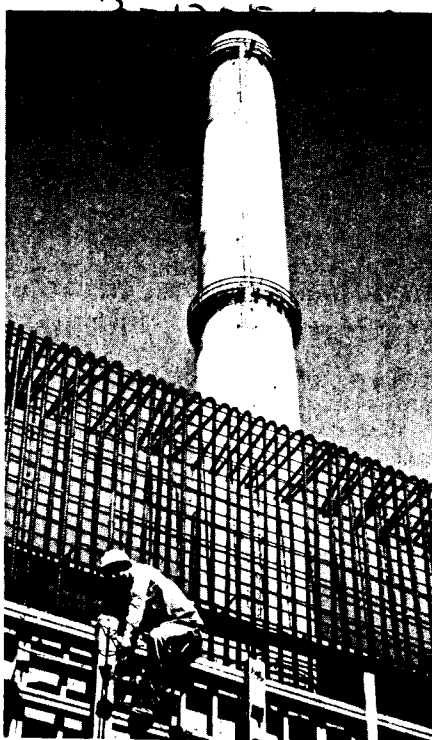
But in this case each seed has to be opened and the hulls spat out on the floor, so every morning the carpets all through the exhibit are practically hidden by the remains. Other than that, the people are well behaved and orderly, and being Moslems, there is practically no drunkenness.

As for the night life, I have little to report. Aside from several fairly official functions, I have not visited any really hot spots or dens of iniquity. After working from about 8:15 a.m. to 9:00 p.m. even an oriental belly dancer loses some of her allure. But I must admit that the young women here are quite beautiful, with huge dark eyes and coal black hair . . .

May 3, 1967 — I will be grateful if you will dispel some of the ideas people at BNL may have formed on my life in Ankara. At the end of my first week here, I have not yet been entrained by the gyrating torso of a single belly dancer; nor have I wandered through narrow camel-crowded bazaars, redolent of musk and spices, haggling for priceless oriental rugs and brassware.

In fact, almost my only impressions of the city so far have been gained during

Wall Almost Finished



A workman is shown fastening reinforcing rods on a form for the last section of the north wall of the \$12 million tandem Van de Graaff being built on Cornell Ave. east of the Cyclotron.

my ten-minute walks between the hotel and exhibit building, and I confess I find Ankara a rather drab town, with little of the glamor one expects to find in the Middle East.

Since I have been quite occupied so far, working from 8:15 a.m. to 9:00 p.m., I have had no problem in avoiding the fleshpots. There have been a few more or less official affairs, and these have all been held in a resplendently modern bistro of the Hilton variety; they were quite decorous, without a revolving navel in sight.

Now that I have cleared my moral record, I must turn to the Exhibit. It is located in a small but pleasant park in the center of town. The setting is most attractive, as the apple, peach, and other flowering trees are now in full bloom, and the Turks have planted artistic flower beds all around our building.

The Exhibit structure itself is strikingly unique; known familiarly as "the double bubble" or "the Maidenform," it is constructed of twin shells of vinyl-coated nylon, zippered together and separated by four feet of compressed air, which maintains the shape of the entire structure. Beyond the arched entrance, with its air-locked revolving doors, are two domed rotundas connected by a slender "waist." Blowers hold the air inside the building very slightly above atmospheric pressure. We don't think about the very faint possibility of the complete failure of the entire air pressure system and the collapse of the structure on the heads of its occupants - it hasn't happened yet and is most unlikely to do so . . .

—Dennis Puleston

Nursery School Meeting

An information meeting on the plans for next year's Nursery School will be held on Wednesday, May 17th at 8:30 p.m. in the Recreation Building. All parents interested in sending their children to the school next year are invited to attend. Inspection of the school rooms and equipment is invited at the meeting.

Travel Fact Book at Library

New Horizons World Guide, Pan American's travel facts about 119 countries, is a new acquisition in the main library.

Information includes arts, ballet, banks, calendar of holidays, cigarettes and tobacco, climate, clubs, common courtesies and local customs. Communications, currency, customs regulations and documents required for U.S. citizens, drug stores, fauna, flora, food and entertainment. Hotels, medical facilities, shops and stores, sports, tipping, tourist taxes, what to buy and where to go.

Johnson Lectures in England

R. A. Johnson of the Physics Department, Solid State Group presented an invited paper entitled "Calculations for the Properties of Point Defects in Metals" at a conference at the University of Reading on "Point Defects in Metals."

He also spent 5 days at AERE, Harwell and 3 days at the University of Sheffield, England, during which time he gave a number of lectures and seminars.

Arrivals & Departures

Arrivals

Carmen M. Benkovitz.....	Applied Math.
Peter J. Clarke.....	Accelerator
George Kircher.....	Staff Services
Ludwina M. Lambert.....	Medical

Bowlers Are Honored At Annual Award Fete

The BNL Bowling Awards Night will be held again this year at the K of C Hall in Patchogue. On Saturday night, May 13, the affair will start with an "Early Bird" drawing for a prize at 8:15 p.m.

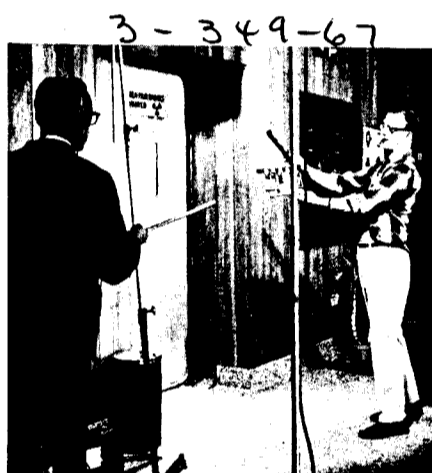
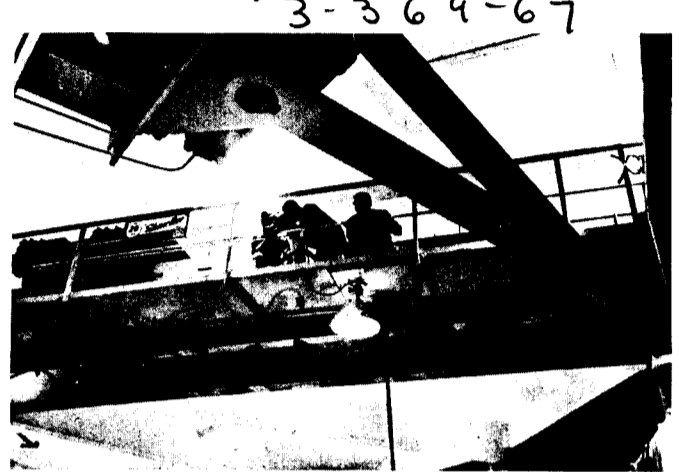
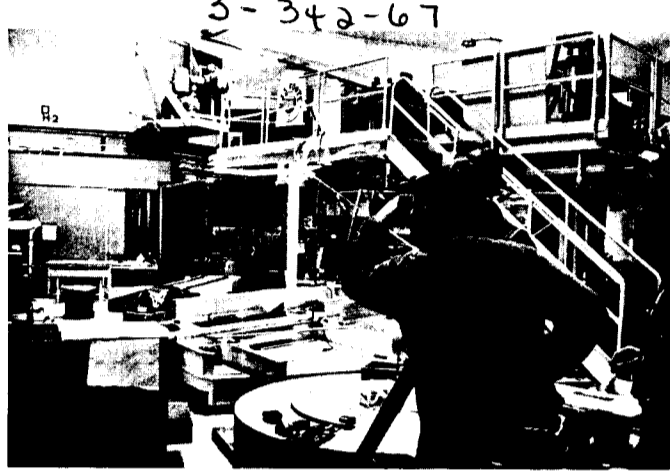
A five piece dance band will play from 9 to 2, and a buffet will be available starting at about 11:30 p.m. Table refreshments will be available as usual, chips and pretzels as well as beer and soda.

Awards will be made by Dr. R.C. Anderson, Joseph Washburne, and Bob Fuchs, BERA president. Emery Egler, outgoing president of the bowling league, will act as MC. BERA has invited all the bowlers and their escorts to attend this party, but so far return of tickets has been slow. A floor plan is on display at the Recreation Office to help in choosing a good table location.

Incoming president Fred Hohmann is still processing questionnaires, and would like to receive as many as possible before the May 15 deadline.

Teams are now forming for the Summer Mixed Bowling League. Application forms are available at the Recreation Office. The deadline date for entry is May 29, as the season will start the week of June 5. This summer league is all handicap play, and the entry fee per team is \$8.00. Pat Towey on Ext. 602 will help those who wish to form a team.

Nuclear Power, Current and Future on 21st Century



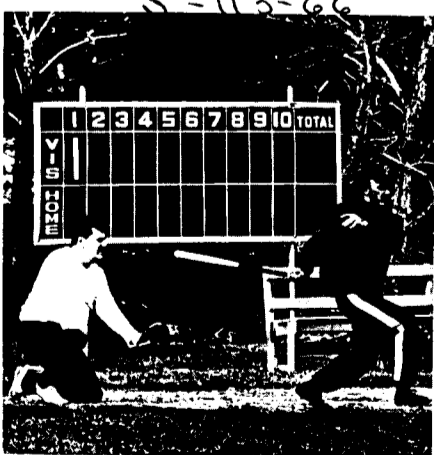
Photos by Walton

Around the Base Pads

by Bob Carciello

Rain washed out the Brookhaven League opening date, but fair skies prevailed for the National and Laboratory league opening games.

The Bubble Boys got off to a good start by rallying with seven runs in the bottom of the seventh to nip the Deadwoods, 15-14. A. Kreisberg got his first hit of the season in the bottom of the ninth to drive home the winning run in a 6-5 decision for the Floorwalkers over the Make Ups. A good team effort by the Phoubars helped upset last years' runner-ups of the National league, Dirty Sox, by a score of 7-5.



Runs scored in the Laboratory league were much higher than in the National league. The three winning teams combined to score a total of 83 runs. Two new teams, Biology and Applied Math met with Biology winning the contest, 9-3. The Mets met our third new team and proceeded to crush the Converts, 34-6. Between cries of "bring back Charlie Daley," Auggie Jurgens belted two homeruns and Neal Carciello, Bob Wilson, and Bill Crockett each contributed a four bagger to pace the Potsareebies attack to an overwhelming victory over the Charlie Brown Stars, 42-1.

Theatre Group Meets To Choose New Plays

The next regular meeting of the BERA Theatre Group will be held on Wednesday, May 17, at 8:30 p.m. in the Theatre. The main program for the evening will consist of a report on The Roar of the Greasepaint... and the selection of the next plays.

The Advisory Committee has selected the following slate for consideration at the meeting:

- Any Wednesday
- Born Yesterday
- The Boys From Syracuse
- The Diary of Anne Frank
- Philadelphia, Here I Come
- Who's Afraid of Virginia Woolf

Following the presentations and discussion, voting will take place for the next two productions - Fall 1967 and Spring 1968. As usual, additional play nominations will be accepted from the floor.

Free Buffet for BGA Members

The Golf Association is having its first after-work 9 hole tournament on Tuesday, May 16. After the tournament there will be a Get-Together and Membership meeting for all Golf Association Members. The Get-Together will start about 7:30 p.m. at the Lake View Inn, Yaphank. Bring your membership card for a free buffet ticket.

All tournament entrants are requested to call Charlie Flood, Ext. 2871 for tee off time assignments. Let's have a big turnout for the entire evening.

Yankee Seats Fabulous!

That was the comment employees made about BERA Box Seats after visiting Yankee Stadium last week. The seats are excellently located, four behind First Base and four just to the left of Home Plate. You would almost have to join the team to do much better. Don't wait - pick your game now. Complete schedules as well as the tickets can be obtained at the Recreation Office daily from 9:00 a.m. to 1:00 p.m.

Fish Tales

by John Tagliavia

Nobody will ever convince Tony Kaczmarczyk that the "eel" isn't the best lure to take large striped bass. However, Tony does concede that when bottom fishing, blood worms and whole squid take their toll. There are other productive lures such as the Hopkins (next to the smallest size), the "swim-along" jointed surface plug, and the "pal-o-mine" surface lure fished at the end of a 6 to 8 pound test line. The success of several of these lures may be attributed to the fact that they closely resemble the sand eel, which is found in great numbers on the North Shore.

According to "Captain Cooch" when the temperature of the water reaches 65.5°, bluefish feed in a frenzy. So if you see somebody wading up to his armpits armed only with a thermometer, don't call the "wagon," he may be a conscientious BERA member gathering statistical information as to the approach of the "avant-garde." All of which brings us to our second prediction. Bluefish will first be caught in great quantity averaging 4 and 7 pounds on the west side of Gardiners Island. This premature run will start approximately (±4 days) May 15th, and will last for a period of about twelve days. A boat is a necessity. The fish are taken by trolling or casting.

Frank Langdon, and Bill Kiselyak took flounders up to four pounds at Napeague over the weekend. Dick Albert clobbered the bass on the South Shore, five of which were legal.

Let us know if we've helped you catch your limit, and remember "watch the birds."

Softball Fields . . .

The softball fields are to be used only for scheduled activity after 5:00 p.m.

A reservation schedule is maintained at the Recreation Office, 3 Center Street, Ext. 391. Reservations are now being accepted for league practice games, as well as group or department games.

The 21st Century, with Walter Cronkite, which is telecast nationally over the CBS network at 6:00 p.m. on Sunday, May 14, will be devoted to the peaceful uses of nuclear energy.

The segment to be aired this Sunday will emphasize nuclear power - its current development and its future. The program will feature an interview with Chairman Glenn Seaborg of the AEC, and will include sequences filmed at Argonne, Oak Ridge, the NRTS, and other AEC facilities, as well as shots made at the HFBR in Brookhaven National Laboratory.

The CBS crew that filmed parts of the program here early in March, consisted of a producer-director, cameraman, assistant cameraman, sound man, and several electricians.

Drivers Test Coming

The 1967 National Drivers Test will be shown on CBS-TV Tuesday, May 23, at 10:00 p.m. This will be the third of what has become a highly rated annual presentation. The 1967 show is an entirely new production, covering such subjects as trailers and motorcycles, hazardous driving conditions, new road signs and symbols, and what happens to occupants of an auto in a collision.

In 1965, 42% of the special test group flunked the test, and in 1966 this figure rose to 43%. What will happen this year is anybody's guess, and if you would like to test yourself and match your score against the test group, you will find test forms printed in next week's *Bulletin Board*.

Safety Item Issue Times

Safety shoes and glasses will be issued from the Protective Equipment Room at the I & HP building on the following schedule:

Shoes - Monday afternoon and Thursday morning.

Glasses - Monday morning and Thursday afternoon.

Classified Advertisements

Autos and Auto Supplies

66 SAAB - All dealer serviced, new snows, driving lamps, deluxe radio, perfect 2nd car, safe transportation. M. Dorin, Ext. 2888.

66 YAMAHA - 50 cc auto trans, 750 mi, blue. \$175. D. Schweitzer, Ext. 622.

65 IMPALA SUPER SPORT - Red, 4 speed, 25,000 mi, serviced monthly by GM, r/h, snows on wheels. Asking \$1800. David or Toni Marlowe, AT9-5747.

58 CHEVROLET - 4 dr sedan, 6 cyl, std trans, good dependable transportation. \$100. J. Gabusi, 273-2391.

60 SUNBEAM ALPINE - Recent complete overhaul incl new tires. \$600. P. Rogers, Ext. 7336, 286-9431.

60 FALCON - 6 cyl, 2 dr sedan, std, w/w, black/white, 20 mpg, clean, dependable, but less than mint cond. \$150. "Honest Art," Ext. 7478, JU8-7145.

59 DODGE CORONET - 2 dr hardtop, std shift, good cond, new tires, 75,000 mi. \$150 or best offer. Ext. 441.

57 FORD - 4 dr sedan, auto trans, runs very well. \$150. Ext. 7289, 281-3008 after 6.

64 HONDA - 250 cc, new tire, plugs & battery. \$325. HA3-7097 after 6 p.m.

61 VOLKSWAGEN - Sedan, good cond, priced to sell. Ext. 2189.

2 TIRES - Sears 7.75x14, 4 ply, 19 mo guarantee left, 1 mounted on rim incl. Asking \$15 for all. H. Pfister, Ext. 2428.

63 CHEVROLET BELAIRE - 2 dr sedan, std shift, 6 cyl, good cond. O. Medeck, EM3-6439.

TRAILER HITCH - For Plymouth. \$10. H. Pfister, Ext. 2428, HR2-1409.

62 PONTIAC CATALINA - Auto trans, ps/pb/pw, 44,000 orig mi, excel cond. Ext. 539.

63 PONTIAC TEMPEST - Excel cond, Michelin-X tires, r/h. \$750. R. Britton, Ext. 7239, 941-3609.

66 FIAT ROADSTER - Conv. red w/black interior, r/h, 5 forward speeds, bucket seats, 13,000 mi, excel cond. Judy, Ext. 2513.

65 YAMAHA MOTORCYCLE - 125 cc, loads of extras. \$375. W. Powell, Ext. 567, 732-5216 after 5:30.

63 KARMANN GHIA - Black, new w/w tires, 43,000 mi, excel cond. \$1145. Ext. 341.

64 THUNDERBIRD LANDAU - New Goodyear HP tires on mag rims, green w/white interior, vinyl roof. \$2700. GR5-1063.

XK 140 JAGUAR ROADSTER - 4 new Michelin-X, new top, sound cond. Asking \$850. R. Hellens, Ext. 439.

54 CHEVROLET BEACH BUGGY - Carry all, motor & front end recently overhauled. W. Hulse, 878-1915.

63 FORD GALAXIE - 8,000 mi on '66 390" engine, 4 speed, mag wheels, new brakes, mufflers, bearings, many extras, excel cond. J. Halpin, 472-0455.

66 HONDA - 66 cc, black, excel cond, 4,000 mi, 200 mpg, bought last May. 289-3190.

Boats & Marine Supplies

18' LYMAN SKIFF - Very good cond, many extras. Reasonable. 281-6788.

JOHNSON 40 HP ELECTRIC - Orig owner, good cond. \$200. Bill, Ext. 2580.

NAVY TOP - Windows & windshields w/mahogany frames from 24' Luhrs, recent conversion to hard top. All for \$35. 941-4467 after 6 p.m.

16' AMESBURY LAPSTRAKE SEASKIFF - 10 hp Johnson outboard motor. John, Ext. 2376.

21' FLYING FINN - Coast Guard approved, 1965 90 hp Evinrude, full canvas cover, w/side curtains. Ext. 7745.

14' FIBERGLASS BOAT - 40 hp Mercury & controls, speedometer & compass. \$250. YA4-3409.

22' TROJAN CRUISER - Inboard, sleeps 2, enclosed head, s.s. galley, many extras. \$1200 takes it over. W. Kalinowski, Ext. 2457.

17' THOROBRED - 1963, 40 hp, trailer, remote control, custom seat cushions, navy top, excel cond, all equipped. \$1175. 269-4174.

19 1/2' PENBO - Cabin sleeps 2, head, navy top, 50 hp elec, extras, ready to go, must sell. \$950 or best offer. D. Kazmark, Ext. 2459, AT9-0265.

15' LAPSTRAKE RUNABOUT - Custom cabin. \$100. Ext. 2466.

11' ROWBOAT - 7 1/2 hp Evinrude, trailer, must sell. I. Lipton, Ext. 464.

14' TROJAN RUNABOUT - 35 hp Evinrude elec, Mastercraft trailer, must sell. I. Lipton, Ext. 464.

22' CHRIS CRAFT - Hard top, double planked, engine recently reconditioned. \$1200. AT6-8476.

18' SHELTER CABIN OUTBOARD - Hull fiberglassed, 40 hp Evinrude. \$375. George, Ext. 7756.

18' ARGO - 35 hp elec, remotes, windshield, extras. \$400. Mac, Ext. 2154, GR5-5222.

30' CABIN CRUISER - Hehre & Auer, 115 hp Chrysler marine, sleeps 5, shower, galley, must sell. \$995. Dick, Ext. 7111, JU5-3719.

Miscellaneous

GUITAR & AMPLIFIER - W/single pickup, in very good cond. \$65. G. Woodson, Ext. 2580.

FEDERAL ENLARGER - Model 296, case, spare lamp, masks for 35mm to 2 1/4x3 1/4 negs, very good cond. \$25. E. Elliott, Ext. 2416, 7196.

PLAID STAMPS - About 11 bks. \$25, or \$2.40 each. Windy, Ext. 2218.

DRAFTING TABLE - Solid mahogany, 30"x38", \$25; ping pong table, \$10. F. Bay, Ext. 445.

BRIDLE - Complete with Never Rust bits, cavesson set, reins, fine grade buff stock leather, excel cond. \$17.50. B. Lomonosoff, Ext. 2488.

LABRADOR RETRIEVER PUPS - Purebred, 3 females still avail. A. Beckwith, Ext. 2349.

CONVERTIBLE STROLLER-CARRIAGE - \$15; carriage seat, \$2; combination car bed & car seat, \$5; bumpers for small crib, \$2. 878-2492.

BASSINET MATTRESS - Cosco baby seat; Playtex nursing kit, yellow kitchen table & chairs; ladies rink roller skates, size 8, w/case. 878-2492.

FREEZER - United, 500 lb cap, upright. Cost over \$800, will sell \$250. 929-4472.

AWNING - 19'x8' pipe framework support for canvas awning. Ext. 7684.

COCKTAIL TABLE - Tile & walnut, excel cond, modern. \$50. Ext. 7684.

MEN'S 26" BICYCLES - Rudge, very good, \$25; men's 26" Royce Union, 4 speed racer, excel, \$30. Steve, YA4-6139 after 6 p.m.

MISCELLANEOUS TEST & SERVICE GEAR - Some radio parts, working TV. J. Hallock, Ext. 2480.

SADDLE - All purpose, English made, average size, will fit most horses, excel cond, incl felt pad, girth & stirrups. \$100. B. Lomonosoff, Ext. 2488.

2 TV's - 1 portable, 17"; 1 maple console, 23"; both needing repair. Yours for \$12. GR5-6579.

TRANSMITTER - 110 W Home Brew PH/CW, 40-80-160 M coils, w/p.s., use as is or for parts. \$12. Ext. 638.

LIONEL TRAIN SET - Fig. 8 track, 5 cars, engine, excel cond. \$10. J. Foxwell, YA4-3567.

CRAFTSMAN JIG SAW - 18", 12"x12" table tilts 45". \$25. SE2-4661.

PEKINGESE - AKC female, 1 yr old, excel personality, good w/children, owner relocating. 744-5164.

CAMERA - Voigtlander Vitessa 35 mm, case, sunshade, F 2.8 lens. Asking \$25. Walt, Ext. 7215.

CRIB, MATTRESS, CHEST OF DRAWERS - Very good cond. J. Sadofsky, Ext. 2709.

MAGAZINE MOVIE CAMERA - Revere 8 mm, case, filter, excel cond. \$18. J. Sadofsky, Ext. 2709.

BLACK BUNNY RABBITS - 10 wks old & 6 wks old. \$1.50 each. Walt, Ext. 2457, AT6-0246.

GIRL'S 20" BIKE - Asking \$10 for Schwinn and \$8 for Royce Union. H. Pfister, Ext. 2428, HR2-1409.

20 GAL AQUARIUM - Piston pump, reflector, stand, setup & fish. \$15. I. Lipton, Ext. 464.

20" WINDOW FAN EXHAUST - Sears. Lipton, Ext. 464.

COLDSPOT REFRIGERATOR-FREEZER - \$50; GE 4 speed delux hair dryer & case. \$10. Dick, GR5-6452.

OLD FURNITURE (ANTIQUES?) - Mirrored hutch, bed w/mattress & spring, record cabinet. 585-4202.

BEAGLE PUPPIES - AKC registered, 6 wks old. Mac, Ext. 466.

LIKE NEW - GE stereo hi fi am-fm radio, \$125; RCA Vista 21" color TV, console; moving. \$300. Dick, GR5-6452.

9x15 TENT - Double sideroom, aluminum exterior frame, has sewn-in floor, \$30; Coleman 2 burner stove, \$5. Ext. 2880.

SCOPE - "Pic" 4X, good for high powered pellet rifle or 22 cal rifle, Japan. \$3.50. R. Hill, Ext. 2463.

DRAW DRAPE ROD - Triple window, w/insert, for panel curtains, new cond. \$6. Dick, GR5-6452.

SCOTTS 24" LAWN SPREADER - Like new, used twice. \$12. Ext. 2410, 2411.

SHRUBBERY - Hicksi, yew, spreading yew, rhododendron, junipers, etc. Ext. 2380.

64 SHASTA TRAVEL TRAILER - 12 1/2', sleeps 5, stove w/oven, ice box & sink. Asking \$950. GR5-4988.

KITCHEN STEP STOOL - \$5; crib w/mattress, \$5. Matko, Ext. 613.

CAR TOP CARRIER - For VW 1200 sedan, cond like new, \$15. 941-4467 after 6 p.m.

SONAR "E" - Full set of xtals, 6 mos old. \$145. Ext. 7677.

B-FLAT CLARINET - Ebonite, very good cond. \$50 or best offer. D. Buteau, AT6-9262.

75x280 WOODED PLOT - On hill in Continental village in Putnam Valley, NY, city water, private lake & country club. \$2500. Morris, Ext. 2879.

POLAROID SWINGER - Like new, \$10; Shetland scrubber & waxer, \$10; Bissel carpet sweeper, \$3; 50 piece Melmac dinnerware, \$12. Ext. 7143, 281-8390 after 6 p.m.

SX 99 - W/QF-1 & manuals, \$70; AF68A & PMR8 w/1070 power supply pptt mike, cable & manuals. \$139.95. Ext. 638.

GONSET SUPER SIX - W/12 volt, \$15; VF-1 w/power supply, \$15; 2 6-amp fil, trans 6.3 volt CT, \$3 each. Ext. 638.

ELECTRONIC FLASH - Ultrablitz, Ni Cad, mint cond. Originally \$99.95, asking \$30. Marcia, Ext. 2743.

HOTPOINT REFRIGERATOR - 12.5 cu ft, good cond, \$35; single bed flat spring (2), new cond, \$3 each. Ext. 2165.

WESTINGHOUSE WASHING MACHINE - Good cond, asking \$50. R. Panvini, Ext. 7661, AT6-3713.

CAR TOP LUGGAGE CARRIER - Canvas enclosed, zippered & water tight. B. Walton, Ext. 2181.

Houses

MILLER PLACE - 5 bedrm cape, 2 baths, fireplace, oil heat, redecorated, new mortgage, many extras, bicycle to beach. \$21,000. C. Zuroff, 473-7292.

MEDFORD STATION - E. Robinson Ave., 7 rm Colonial ranch, equipped laundry rm, low taxes, many extras, 9 mi to Lab. \$18,500. GR5-8426.

PORT JEFFERSON - Harbor Hills, 2 story Colonial, 3 bedrms, 2 1/2 baths, beach rights, 1/2 acre. \$26,000 net. HR3-8051.

CENTEREACH-SELDEN - 3 yrs old, 9 rm hi-ranch, 4 bedrms, 1 1/2 baths, family rm to patio, garage, s/s, carpeting. \$16,500. 732-6562.

SOUTHAVEN - 2 bedrms, 2 1/2 baths, brick & alum siding, approx 1 acre landscaped, 2 car garage, full basement, sprinkling system in flower garden, fruit trees. \$33,000. 281-8708 evenings.

YAPHANK - 2 story Colonial, 5 rms, 1 1/2 baths, full basement, upstairs unfinished, 1/2 acre, landscaped lot, extras. YA4-6880.

SMITHTOWN - Hi-ranch, 3 bedrms, liv rm, din rm, lg panelled kitchen, double garage, s/s, landscaped, fenced, appliances. AN5-6483.

OKDALE - Attractive 9 rm cape-ranch, redwood panelled liv rm & den, fireplace, convenient to shopping, trans, school. LT9-5741.

For Rent

3 BEDRM HOUSE - Shirley, unfurnished, 4 yrs old, lg kitchen, garage, basement, very clean. \$130/mo. Ext. 552, 281-3066.

FURNISHED RM - In modern house, priv bath, quiet, 10 min drive to Lab, 66 Broadway, Shirley. 281-5068.

MOTHER/DAUGHTER HOUSE - Shirley, excel cond, immediate occupancy. YA4-6092.

2 BEDRM APT - Spacious, remodeled, upstairs, located in heart of Bellport Village, liv rm, kitchen, bath. GR5-0028, AT6-8220.

Wanted

TYPIST - To do term paper for grad student, due end of May. V. Brown, AT6-9257 after 6 pm.

PIANO STUDENTS - Beginners or advanced. Ext. 2929, YA4-8680.

BABYSITTER - My home, 8-3, own transportation, St. James. Betty, Ext. 2375.

5 KING KORN STAMP BOOKS - For 5 Plaid Stamp Books. Alice, Ext. 2375.

2-DRAWER FILE CABINET - Any reasonable cond, low price. L. Joiner, Ext. 2741.

MUSICIANS - To join new group, Bellport-Patchogue area. Ext. 2971, 286-1378 evenings.

RIDING TYPE LAWN TRACTOR - Or mower. P. Rogers, Ext. 7336, 286-9431.

BOY'S 20" BIKE - Preferably Schwinn, in good cond. Ext. 7603.

SUMMER EMPLOYMENT - For grad student, industrial mgt, July thru Sept, work needed to cover college costs. GR5-8658.

PERSONS MAKING CHAMBER MUSIC - For violinist & flutist. Ext. 7715.

PET BOARDING - Any size, shape or form. Experienced animal handler. Call Ron Breuning AAS, BSA. Ridge. 924-8681.

POSITION FOR WOMAN - To care for child (children), in my home weekdays, Miller Place. 744-8318.

LADIES - To play ladies' softball. D. Skokna, Ext. 309.

DOG OWNERS - Wishing to train their dogs in basic obedience & behavior training. P. Warner, Ext. 2402.

TO RENT - 2 bedrm house or apartment, unfurnished, w/garage, near Lab, occupancy June, 1 yr lease. Ext. 359.

LUGGAGE RACK - To fit on Corvette. Ext. 359.

OLD FASHIONED BEDRM SET - Dark wood, in good cond. 732-3419 after 6 pm.

Carpools

DRIVER - For established carpool, East Islip vicinity. Bill, Ext. 2580.

DRIVER - To join carpool from Bellport area, not necessarily Mon-Fri. Rod, Ext. 7262.

WOULD LIKE TO JOIN OR FORM - Carpool from Port Jefferson (Harbor Hills) area. R. Drucker, Ext. 2185.

DRIVER - For carpool from Bellport, 8:30-5 pm shift. B. Kropp, Ext. 2459.

DRIVER - To join existing carpool from Patchogue. B. Benedict, Ext. 353.

DRIVER - To join carpool from Stony Brook or Setauket. R. Lingg, Ext. 481, 751-1253.

Lost & Found

LOST - On BNL grounds, 5/2/67, white, std size, female poodle, wearing red collar w/some metal studs missing, children heartbroken. Ext. 2412.

Classified Ad Policy:

- The Bulletin Board's classified section may be used only by active and retired Laboratory employees.
- All items for sale or rent must be the advertiser's property.
- Persons listing houses, apartments, or rooms for sale or rent, do so with the understanding that these must be available without regard to race, creed, color, or national origin.
- Ads associated with a full- or part-time business cannot be accepted.
- Ads should be restricted to 20 words or less and typed or

printed on the form provided. (Additional copies of the form are available at the Bulletin Board office.) Twelve noon on Friday is the deadline for inclusion in the following week's issue.

6. Ads are run on a space-available basis; those not carried because of space restrictions will be held for inclusion in the next issue.

7. Ads are run only once and must be resubmitted if they are to be repeated.

- For Sale: Auto & Auto Supplies
 For Sale: Boats & Marine Supplies
 For Sale: Miscellaneous

- For Sale: Houses
 For Rent
 Wanted

Carpools

Check the heading applying to your ad. Print or type your ad in 20 words or less.

(Name & Phone No. To Call)

If this ad concerns housing for sale or rent, such housing is available without regard to race, creed, color, or national origin.

Employee's Signature _____ Life No. _____ Ext. _____

Send to: BULLETIN BOARD, 40 Brookhaven Avenue