

BULLETIN BOARD

Volume 21, Number 37

Published by the BNL Public Relations Office

September 21, 1967

9-276-67

Two Cross Section Info Groups Merge

The Cross Section Evaluation Center and the Sigma Center have been combined to form the new National Neutron Cross Section Center, a divisional unit of the Nuclear Engineering Department. Dr. Sol Pearlstein has been named Acting Director of this new Division.

The functions of the new Center are to develop a highly computerized system for the storage and retrieval of cross section information and to advance new methods of cross section analysis. Both of the component sections of the new Center had been operating within the Reactor Physics Division, headed by Jack Chernick and Herbert Kouts.

The work of the Sigma Center was transferred to the NED from the Physics Department in 1960 after the death of Donald J. Hughes. The companion group for Cross Section Evaluation was formed about that same time. The work of Sigma Center is most clearly identified by the cross section compendiums BNL 325 and BNL 400. Murrey Goldberg will continue to be responsible for the scientific aspects of the compilation activities of the new Center.

Numerous Journal articles, BNL reports and Newsletters have come from the CSEC. It also maintains the Evaluated Nuclear Data File, coordinates the inter-laboratory Cross Section Working Group, and provides guidance and facilities for the AEC Industrial Participation Program.

An advisory committee comprised of senior scientists representing a wide spectrum of cross section users will be appointed to aid the NNCSC in the development of its program. The new Center and Advisory Committee form a unit with increased capacity to meet the varied and expanding needs of the cross section community.

Wm. Floyd Parkway To Open Next Week

The *Bulletin Board* learned today that William Floyd Parkway will be opened to traffic either on Friday, September 22 or Monday, September 25, if installation of end rail sections of the guard rails is completed.

John Lenaerts, of the NY State Department of Public Works told the *Bulletin Board* that an inspection of the job revealed that sufficient progress had been made to predict the above dates. He pointed out that however, "If we have a real bad break in the weather, things could be held up."

As a result of a story in last week's *Bulletin Board*, officials from the State sent an inspection team to the job, and arranged for a meeting with Lizza Bros., the contractor, to iron out the difficulties in completing the job. A new sub-contractor was hired for the guard rail and delineator work, and signs and road lines were installed during the past two weeks.

Approximately 100 people have signed petitions calling for the opening of the Parkway, and many people have expressed their willingness to work towards this end.

Words of Wisdom:

"All people smile in the same language."



Dr. George C. Cotzias is shown with a patient who has been treated with DOPA for relief of Parkinsonism. The ability to knit again is a good indication of the progress of this patient after treatment. Photo by Walton

Two BNL Doctors Report Progress In Treating Parkinson's Disease

Parkinson's disease is an extremely disabling ailment, and is characterized by symptoms such as "freezing" as well as involuntary acceleration while walking, rigidity, poor posture, tremor, excess saliva, and excess secretion of tears, all of which tend to indicate a disorder of the motor system of the brain. To date there is no known cure for Parkinsonism, but according to a report from the Medical Research Center here at BNL, there is hope for at least a controlled treatment.

Encouraging progress was reported today by Dr. George C. Cotzias and Dr. Paul S. Papavasiliou in a paper "Therapeutic Studies of Parkinsonian Patients: Long

Term Effects of D-L and L Dopa," presented Tuesday at the Second International Congress of Neuro Genetics and Neuro Ophthalmology held in Montreal, Canada, from September 18 through the 22nd.

Parkinsonian patients exhibit a deficiency of dark pigment (melanin) and biogenic amines in the nerve center of the brain. Early work at Brookhaven used neutron activation analysis, which established a chain of research that led Cotzias and his group to the use of Dopa in an effort to correct the melanin deficiency. Dopa is a biologically active form of dihy-

(Continued on page 2)

Marine Center Asked For Caribbean Area

Associated Universities, Inc., the organization which manages Brookhaven National Laboratory and the National Radio Astronomy Observatory, has transmitted to the National Science Foundation a plan for establishing and operating a national Tropical Marine Science Center on the island of Puerto Rico.

The proposed Caribbean Marine Science Center would be located on the southwest coast of the island, at Belvedere, on land promised by the Commonwealth of Puerto Rico. It would include a superlatively equipped research laboratory, a visiting center for scientists and students from institutions in Latin America and throughout the world, and extensive facilities and technical capability for carrying out modern experimental science directly within the near-shore marine environments. One-half of its staff of 80 scientists would be on-leave appointees from other institutions. Several hundred guest scientists and students would be expected to visit the Center during the year for field courses and individual research projects in tropical marine science.

The AUI plan resulted from a one-year study, funded by the National Science Foundation, to assess the need of the scientific community for a possible inter-institutional, nationally-funded facility for research and education in Tropical Marine Science, and to develop plans for such a facility, if required. The work was carried out by the AUI staff with the guidance and advice of a Steering Committee chaired by Dr. John Ryther of Woods Hole Oceanographic Institution.

Dr. Clarke Williams, formerly Deputy Director of BNL, was a consultant to the Site Study Committee for the Center. When he visited the site of the proposed center, he was favorably impressed by the physical aspects of Belvedere. "This is a very pleasant part of Puerto Rico," he said. "If people were going to work there, they would easily adjust to the language difference."

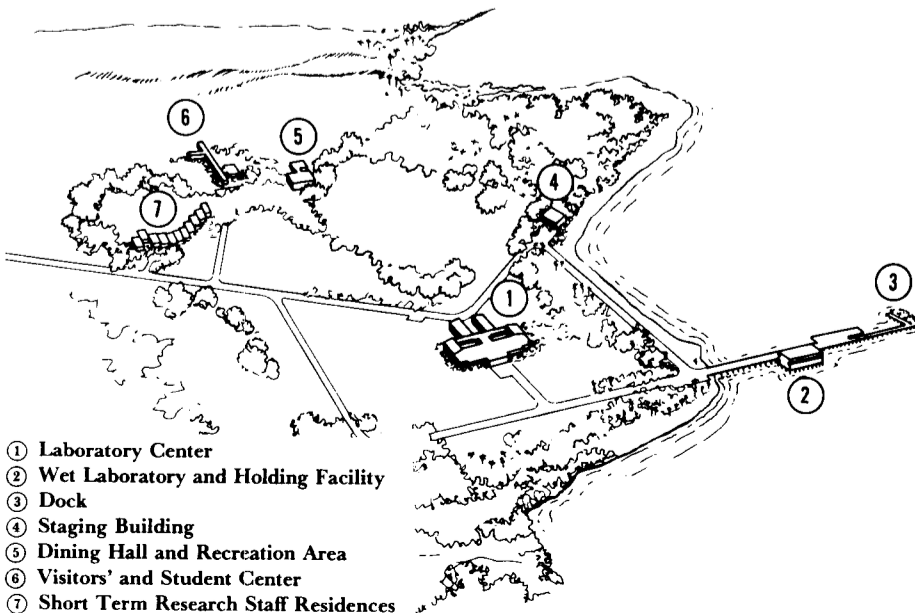
"Government agencies seem anxious to cooperate, and the Mayaguez Center of the University of Puerto Rico is quite close. Several BNL staff members have spent some time at the Nuclear Centers at both Mayaguez and at San Juan, and found the experience quite delightful."

The National Science Foundation's reaction to the AUI plan, as well as its own assessment of the needs for such a development at the present time, is not expected for several months.

AUI has offered to act as the prime contractor for designing and constructing the Tropical Marine Science Center and to operate it as a national facility under policies similar to those which now apply at the Brookhaven and National Radio

(Continued on page 2)

Proposed Tropical Marine Science Center Belvedere, P.R.



Borzi To Head S & M Division

Dr. William J. Catacosinos, Assistant Director for Business Management and Business Administration, announced today that Phillip L. Borzi has been promoted to the position of Manager of Supply & Materiel Division effective Sept. 1, 1967 by Dr. George H. Vineyard, Deputy Director.

After 4 years at Upton with the Army, Borzi worked on the Manhattan Project, joining BNL in 1947 as a Storekeeper. In 1953 he became Foreman, Assistant Supervisor in 1955, Supervisor in 1956, and Assistant Manager of the Division in 1961.

Phil lives at 65 Case Avenue, Patchogue with his wife Marie Roberta, two daughters and twin sons.

Borzi replaces Frank Walsh who left the Laboratory to accept a position at Weston.

Marine Center (Continued)

Astronomy facilities. The estimated cost for constructing and equipping the Center, in 1967 dollars, is \$10.5 million. Its annual operating costs, when staffed and fully used by visitors, are expected to run \$3.3 million. The Commonwealth of Puerto Rico has offered to make available, with necessary improvements and at no cost, valuable seaside land for the Center.

In presenting the planning document to the National Science Foundation, Dr. T. Keith Glennan, President of AUI, urged that the Caribbean Marine Science Center be given high priority as a new scientific venture for the United States. "Human intrusions are rapidly eliminating most of the natural environments of the earth," said Glennan, "and this prospect is nowhere more disastrous than along the tropical shores where the population pressures are greatest. The understanding necessary to manage and exploit this potentially rich zone of natural resources is largely missing. It seems urgent that a scientific effort must be implemented before the original marine ecological systems of the tropics disappear through human mismanagements and pollution."

Two Doctors (Continued)

droxyphenylalanine, an amino acid and a precursor of melanin.

The report covered the response of 12 Parkinsonian patients at the Medical Center to treatment periods of from three to sixteen months prior to August 1, 1967. All showed definite signs of amelioration of their Parkinsonian symptoms. Five began their treatment with D-L Dopa prior to receiving only L-Dopa, and the other seven were treated only with L-Dopa throughout. The initials D and L designate the rotational direction of chemical activity of a chemical compound when viewed with polarized light. Clockwise rotation is designated by D and counter-clockwise by L. In the case of Dopa, the prefix also denotes the natural isomer.

During the first two weeks following a patient's admission, all medication used by the patient prior to admission was systematically withdrawn. During the next two to three weeks, the patient received a placebo, during which time his or her basal state was documented. This was followed by the administration of the D-L Dopa to the five patients, and subsequently the L-Dopa to all patients. Treatment was interrupted periodically by substituting placebo to evaluate the effect of the Dopa. The daily dosage for each patient remained constant, including the placebo periods, at an optimum dose of L-Dopa for each patient. The optimum dose was the daily amount required to sustain improvement without inducing distressing side effects.

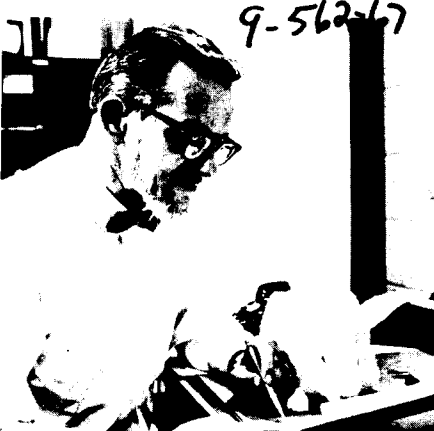
In the clinical administration of L-Dopa, improvements were noted in each case. Patients who had marked symptoms of tremor, rigidity, and loss of power of voluntary movement, showed tremendous improvement after administration of the drug. Those with problems in walking, and excessive salivation were also markedly improved.

Dr. Cotzias stressed that the report was a preliminary one, the total number of patients was small, and as already noted, the patients' regimen was periodically interrupted. Hence, the experimental studies to date do not show whether or not L-Dopa can be administered with both impunity and success over the course of years. L-Dopa appears sufficiently effective to warrant further investigations, but with rigorous safeguards to protect the patients' health.

Health Physicists Meet in N.Y. 9-652-67



Bunnies at the Playboy Club show the way to the symposium during meeting of the New York Health Societies. Photo by Humphrey



Andrew Hull, President-Elect of the Greater New York Chapter of the Health Physics Society is shown with one of the BNL bunnies. Photo by Rosen

Bunnies All Ears For Health Physicists

Yesterday the bunnies at the Playboy Club in New York competed with the bunnies from BNL for the attention of the members of the Greater New York Health Physics Society.

Andrew Hull, president-elect of the society, and program chairman for this year, announced that the Third Annual Symposium of the New York Health Societies was held this year at the Playboy Club on Wednesday, September 20.

This joint symposium was an all-day session that started at 10 a.m. with opening remarks by Robert Van Wyck, President, and included four papers presented before the lunch-time break. After luncheon with Dr. K.Z. Morgan, Director of Health Physics at Oak Ridge, as speaker, the first meeting ended at 3 p.m.

As the program noted, attendees remained at the club for "ogling" and "other ancillaries" until the evening session started at 5:30 p.m., at the regular meeting place at the New York University Medical Center. Charles Flood, also of BNL, and treasurer of the society, said that about 100 people attended both morning and evening sessions.

Patients at the Laboratory's Medical Center are admitted only after referral by their physicians and the degree to which the patient's ailment coincides with the research programs in the Medical Center.

Arrivals & Departures

Arrivals

Robert B. Bell.....	Physics
William R. Busch.....	Accelerator
Theodore A. Daniels.....	Applied Math.
Stephen J. Dinora, Jr.....	Mech. Eng.
John W. Dolan.....	Applied Math.
Paul E. Einfeldt.....	Accelerator
Mildred Fink.....	Fiscal
Michael F. Hobdell.....	Nuclear Eng.
Burleigh James.....	Nuclear Eng.
Bernard Jefferson.....	Instr. & H.P.
Kazuo Kemmochi.....	Instr. & H.P.
Richard E. Machnowski.....	Physics
Walter J. Mason.....	Staff Services
Joseph Niegocki.....	Accelerator
William C. Venegas, Jr.....	Accelerator
Carol A. Wawrzusin.....	Applied Math.
William G. Wilhelm.....	Physics

Departures

Mary P. Caruso.....	Physics
Donna V. Fitzgerald.....	Director's Office
Roger S. Jones.....	Physics
Johann Oesterreicher.....	Chemistry
Robert L. Pease.....	Accelerator
Huei-Ying Yao.....	Chemistry

Service Awards - August 1967
Twenty Year

Pallas, Frederick.....	Mech. Eng.
Green, George K.....	Accelerator
Saletros, Albert.....	Fiscal
Tuttle, William A.....	Physics
Amaro, James.....	Nuclear Eng.
Mann, John D.....	Physics
Lehn, Robert.....	Shops
Strickland, Gerald.....	Nuclear Eng.
Buckles, Walter C.....	Supp. & Mate.
Blewett, John P.....	Accelerator
Allen, Robert J.....	Plant Maint.
Dillingham, Robert W.....	I & H.P.
Maloney, Helen Z.....	Mech. Eng.

Ten Year

Brockner, Margaret E.....	Medical
Casey, Leo J.....	Graphic Arts
Edwards, Paul G.....	I & H.P.
Giehler, Joseph G.....	Physics
Kuzmack, George.....	Accelerator
Nuara, Viola.....	I & H.P.
Ripperger, Wesley.....	Mech. Eng.
Thornhill, Frank J.....	Accelerator

Ode to a Bucket . . .



Meet Carl Thien of the Bulletin Board Reporting an oddity, part of nature's discord. Through the bucket this tree did grow, A reminder today of a long time ago.

Perhaps an irate soldier while on KP,
Slammed this soup bucket over the tree.
Maybe it held potatoes or Long Island duck,
Whatever the case, over the tree it stuck.
A rusty bucket on a lone scrub pine,
They might be even surplus from a nursery rhyme.
But because they chose the AGS injector path,
Their doom is sealed in the bulldozer's wrath,
They soon will depart this life on earth,
And their heritage to us will be a dearth
Of trees that grow through a rusted tub.
In benediction then, amen and rub-a-dub dub.

Here and There

Dolores del Castillo

The Symposium on Microelectronic Applications will be held on Sept. 21-22, at the Garden City Hotel. This symposium is sponsored by the Long Island Section of the IEEE and the Aerospace and Electronics Systems Group of the IEEE.

Frederick P. Cowan, Head of the Health Physics Division, will attend the annual meeting of the International Commission on Radiation Units and Measurements to be held in Madrid, Spain, Sept. 25-30.

James J. Kelly (DO) addressed the Rocky Point Lions Club on Sept. 19 and showed the Club the film Brookhaven Spectrum.

Brian Montague, CERN, will be at the Laboratory on Sept. 25-27.

The International Conference on Solid State Physics Research With Accelerators will be held at the Laboratory Sept. 25-28. There will be representatives from Canada, Denmark, England, France, Germany, Holland, Sweden, Belgium and Yugoslavia.

R.C. Anderson (Scientific Personnel Office) is attending a meeting of AEC laboratory consortia and contract personnel at the Idaho Nuclear Corporation in Idaho Falls.

Arnold Sparrow (Biology) attended a Symposium on Gravity and The Organism held in Tuxedo Park on Sept. 17-21.

Harold Siegelman (Biology) attended a National Science Foundation Panel Meeting in Denver, Sept. 18 and 19, and then went on to UCLA where he conferred with members of the staff on studies of biopigment in plants. He will be in La Jolla on the 21st and 22nd where he will give a seminar on these studies.

William Fleischer (PM) attended the Drexel Institute of Technology for courses in Water Treatment And Technology.

Stephen Biemer and Alfred Mahlmann (PM) will attend the IEEE-IGA in Pittsburgh, Oct. 3-5.

Nicholas P. Samios (Physics) will attend the Heidelberg Conference on Elementary Particles, Sept. 20-27.

Bernard Manowitz (NED) will present a paper to the Joint British Nuclear Engineering Society and British Nuclear Symposium being held in England, Sept. 25-30.

BERA Opera Tickets Go On Sale Monday

BERA has purchased, through the Metropolitan Opera Guild, a limited amount of subscription tickets, for certain performances of the Metropolitan Opera at Lincoln Center for the 1967-1968 season.

Eight seats located in the Family Circle Section and priced at \$2.50 each have been purchased and are now on sale to our employees for eighteen performances of the Opera. This arrangement makes it possible to have tickets on hand for direct sale to our employees.

Obviously, we have a limited supply which will be sold on a first-come, first-served basis. In order to enable as many employees as possible to secure tickets the following procedures will be observed. Please make your reservations early.

Ticket Practices

The Recreation Office will be open for ticket sales and information daily from 9:00 a.m. to 1:00 p.m.

Tickets are intended for employee and members of his immediate family. It is understood a single employee might wish to purchase an additional ticket for his or her escort.

Employees may purchase two tickets.

Tickets will not be returnable or acceptable for refund at the Recreation Office.

Football Notes

by Jack Brennan

The Batmen beat AGS 30-24 in a protest game. An AGS touchdown tying the score with twenty seconds to go was ruled void, bringing on the AGS protest. Phil Stohr of the Batmen had three TD's; John Aloji of the Batmen and Tom Lee of AGS had two TD's each. Jumping out to an 18-0 lead, the Old Timers held off the Slow Pokes 30-18. Murray Gottfried scored three TD's and played strong safety when the Slow Pokes were throwing the bomb late in the game. The Chamber Chaps broke into the win column, beating the Kickers 24-12.

	W	L
Old Timers	3	0
Batmen	3	0
Slow Pokes	1	1
Panthers	1	1
Chamber Chaps	1	2
Kickers	0	2
AGS	0	3

Hospitality News

A Hospitality Committee "Coffee" meeting will be held on Monday, September 25, in the Recreation Building in the Apartment Area. Refreshments will be served. Time: 10:30 to 12:00 noon.

BERA Film Series

Thurs., Sept. 28 - 8 p.m. - Lecture Hall
The Troublemaker

A funny tale of a mid-westerner who comes to Greenwich Village to open a coffee shop. His entanglements with the law, the hippies, the artists, and a variety of ladies are hilariously portrayed.

Short: The Day Manolete Died

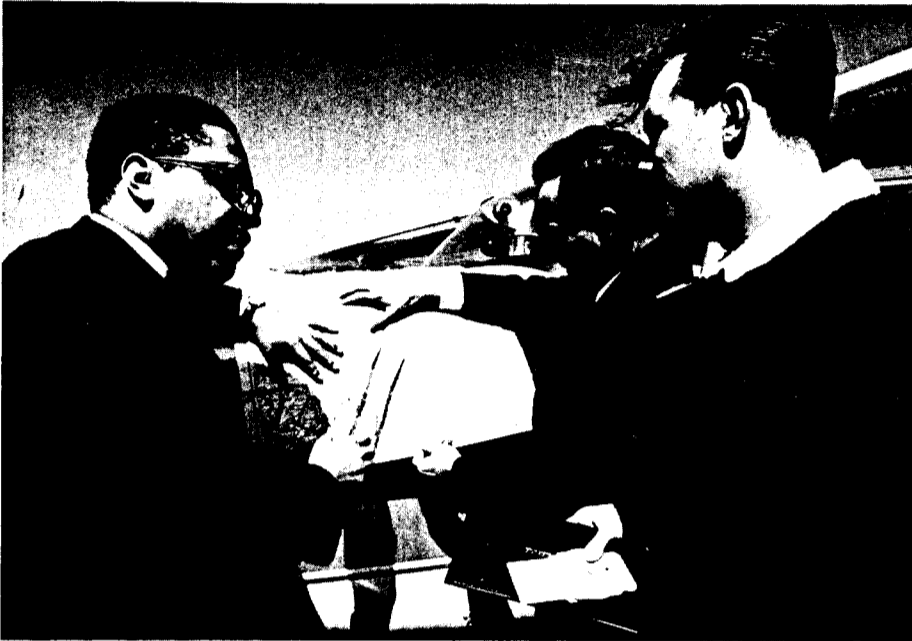
Movie Tonight!

Galia

A French drama of a pretty girl who has an affair with a man in order to punish him for betraying his wife. Of course things take an unexpected turn. Not a heavy story, but worthy viewing.

Short: Harlem Wednesday

Aviators Plan for Action



At Brookhaven Town Airport, members of the BNL Aviation Club plan for a flight. L to R are: Bob Medina, Plant Engineering and Planning; Robert Loper, Accelerator; and Richard Coligny, Accelerator.

Aviation Club . . .

On Thursday, September 28th at 8:00 p.m. in the Recreation Hall, the BNL Aviation Club will hold a meeting for the specific purpose of inviting all prospective members to attend. There will be a detailed discussion of our purpose and goals with an emphasis on the flight school.

Since organization of the club on March 10th, considerable progress has been made. Lectures from guest speakers have covered a number of varied fields of the aviation industry including such topics as air traffic control and aerial photography. A small library has been established that is geared for those people who wish to obtain their private, commercial, or instrument pilots licenses.

If you are the type of person who likes that little extra bit of excitement come to the meeting on September 28th.

Sports Car Club Rally



This Saturday night, Sept. 23, 1967, the Sports Car Club Rally will get underway at the Oakdale Lanes Parking Lot on the Montauk Highway, Oakdale. Registration will be at 7:00 p.m., and the start will be at 7:45 p.m. The registration fee for Club members is \$3.00, for non-members \$4.00. Trophies will be awarded at the finish of the rally.

Experience is not required, but a navigator and flashlight are. Any car is eligible. For further information, call Stan Anderson on Ext. 2411-12-13.

9-257-67



Ronnie Evans and Stan Anderson, both members of BLAST prepare to team up for Rally.

BNL "Urchin" Becomes D.C. "Hostess"

Elaine Friedman, who recently achieved Lab-wide prominence as that urchin from "Tim-Buck-Three" in *Roar of the Grease-paint*, has been cast as that hopeless hostess Billie Dawn in *Born Yesterday*.

We tried to reach Mrs. Friedman for a comment, but were told that she was in seclusion somewhere in the Swiss Alps. Her mild-mannered husband who was baby-sitting at the time expressed only slight surprise.

As you know, this role of Billie Dawn, the dumb, wise-cracking concubine of wheeler-dealer Harry Brock, sky-rocketed Judy Holiday to fame. Observers have already noted that similarities between Miss Dawn and Mrs. Friedman must have demanded this inevitable casting.



The principal male roles will be performed by Charlie Zavesky as Harry Brock (foul, foul, foul) and Graham Campbell as Paul Verrall, Billie's instructor-in-couth who disguises love for education. George Counadis will make his debut as Eddie, Brock's henchman; and in a bit of surprise casting, Bill Getman, a professional artist and actor from East Setuaket, will portray Devery, the spineless lawyer who is crushed by Brock.

Announced production dates are Nov. 10, 11, 17, and 18, although no clues have been received as to when Mrs. Friedman will return. Rumors still persist that she will follow her period of seclusion with an extensive tour of slum areas in Manchuria. Some gal! We love you, Elaine. Please come home!!

Fish Tales



by John Tagliavia

George Lilja's heart skipped a beat last week when he spotted what he thought to be the Intrepid's mast on the horizon. But alas, it turned out to be the Giant's 16 foot surf stick propped upright in the rod holder of his aluminum wave buster. Listed among the other upright figures in the boat were Nick Parrinello and the incomparable Cooch. They caught a total of three blues, the largest going 10 pounds. Next time you're in the vicinity of Buoy 9 or 11, and you see these amiable three, pull up alongside and say hello. Their cordiality will overwhelm you, especially if they're sitting in a school of breaking bass.

Dick Albert, fishing aboard a friend's boat, assisted in the taking of eight blues. The largest of which was 21 pounds. They trolled the fish in deep water three miles east of Shinnecock Inlet without the benefit of 'seeing-eye birds'. Dick said the blues were moving west in a big hurry. Looks like the end of another year. Bass have been spotty for the 'wood-chuckers'. The bait fishermen however have been operating with a fair degree of success. More signs of a diminishing season.

There have been reports of bass at the 'Fort', which is an island used for bombing practice and lies due north of Gardiners Island. The fish are 'schoolies' and range from three to five pounds. Larger fish have started to show at "Shagwong" and "Pollock Rip" which is located due north of the extreme tip of Montauk. Fish Shagwong at dusk with black surgical tubing for the tackle busters. If you're a bait fisherman, try live tinker mackerel or eels on a five foot leader bumped along the bottom on an outgoing tide.

Lone Shark Exposed . . .



Picture shows Richard Ferdinand and Anthony Bono of the Bubble Chamber Group, who made a surprise catch 200 feet off Crane Neck on Long Island Sound. The Dusky shark landed by Bobo weighed 160 pounds, and was 7'2" long. They were fishing for stripers at night when the shark hit the ell rig bait. It took over an hour to land the monster, and several more hours to recover from the shock of their catch.

Camping Club

There will be a meeting of the BNL Family Camping Club on September 21st at 8:00 p.m. in the Recreation Hall. All members are urged to attend. Any one wishing to join the club is cordially invited to this meeting.

Classified Advertisements

Autos & Auto Supplies

- 65 FALCON FUTURA STATION WAGON - Fully equipped, low mileage. \$1250. Helen, Ext. 2114, 924-6666 after 6 p.m.
- 59 RAMBLER - 4 dr, 6 cyl OHV engine, auto trans, recent motor overhaul, needs inspection & licensing. Buhl, Ext. 354.
- 3 TIRES - 8.20x15 blackwalls. \$25 for all. J. Simecek, Ext. 584, GR5-5150 after 6 p.m.
- 53 CHEVROLET BELAIRE - Engine & auto trans good, rear end poor, good radio, fair tires. \$75. G. Skarka, Ext. 476.
- 58 CHEVROLET - 2 dr, good cond, reliable trans. P. Ettari, Ext. 2407, 273-6436.
- 64 VOLKSWAGEN BUS - P. Ettari, Ext. 2407, 273-6436.
- 58 METROPOLITAN - Mechanically good, body rusted, good source for spare parts. Make offer. 744-5242.
- 1941 LINCOLN ZEPHYR V-12 LIMOUSINE - Body & mechanics excel, new breaks, 9 new tires, orig upholstery. Ira, HR2-0215 after 7 p.m.
- 2 FIRESTONE BLACKWALL SNOW TIRES - 6.50x13, less than 2000 mi. \$10 ea. Doris, Ext. 2180.
- 64 CORVAIR MONZA - 4 dr hard top, auto trans, new tires, good cond. \$800. Ext. 7267, can see car 9/19/67, AT9-5854.
- 62 OLDSMOBILE 88 - Ps/pb, r/h, air cond, 50,000 mi, excel cond, lt blue. \$795. Ext. 7618, AT6-1358.
- 66 NSU PRINZ "1000" SEDAN - 1 owner, like new, honest 32 mpg on regular gas, fast, dependable. \$1295. Bill, Ext. 2393, 724-3035.
- 63 CORVETTE STING RAY - Conv, 2 roofs, excel cond. \$2100. Ext. 445, YA4-3082 after 5 p.m.
- 60 LARK STATION WAGON - Excel mechanically, 53,000 orig mi, new tires & exhaust system. \$250. 751-1415 after 6 p.m.
- BENTLEY - \$4000. Windschauer, Ext. 2218.
- 66 HONDA SUPER-HAWK - Excel cond. \$550. R. Ehler, Ext. 7400, 277-3199 after 6 p.m.
- 64 FORD GALAXIE - 8 cyl, 4 dr sedan, ps, auto trans, radio, etc., low mileage, less than bk value. \$1200. Ext. 663, LT9-0644.
- 65 PLYMOUTH FURY - Conv, tan, 8 cyl, r/h, new w/w tires, auto trans, excel cond. \$1795. M. Smith, Ext. 603.
- HARD-TOP FOR TRIUMPH-TR4 - White fiberglass w/cloth lining & wrap-around rear window, excel cond. S. Spark, Ext. 2442.
- 61 VOLKSWAGEN BUG - Good cond, radio. \$500. R. Sollanek, Ext. 7111.
- 55 CHEVROLET - 283 Corvette engine, Mallory ignition, 3 speed Hurst trans, just primed. B. Dee, Ext. 2258, 2380.
- 64 HONDA - W/'66 engine, less than 600 mi on new engine, excel cond. \$250. B. Conway, AT6-3576.
- 4 BBL CARBURETOR & MANIFOLD - For Chevrolet 283. \$10. R. McClusky, 878-0153 days, Ext. 2539 nites.
- 66 HONDA - Black 65cc, excel cond. \$150. Melvin, 289-3190.

53 CHEVROLET - 2 dr, very good cond, rebuilt '58 Chevy installed, new front end, brakes, battery. J. Capute, Ext. 2407, AT9-2134.

Boats & Marine Supplies

- 30' CABIN BOAT - Newly rebuilt 115 hp Chrysler Crown, stable, sturdy, excel for family or work, 2 bunks, head. \$1495. Ext. 379.
- 18' COMMODORE SEA SKIFF - W/75 hp Evinrude, navy top, side curtains, mooring cover, skis, many extras. \$800. Bill, Ext. 2580.
- 26' DODGE CABIN CRUISER - 105 Nordberg FWC, 4 berths, galley, enclosed head, fully equipped. \$2500. Reilly, Ext. 434.
- CRUISING CATBOAT "SECRET" - 22½x10½x3'. M. Fleming, AT6-0992.

Miscellaneous

- SHRUBS - Rhododendron, full 18" red, white, lavender; Blue Viridis, 3'; Mugho pine, 12", round, full. Brownie, Ext. 2380.
- ATTENTION HIKING BOY SCOUTS - #547 Yucca Pack w/rack. \$11 value for \$6. G. Lilja, Ext. 657.
- 1954 FRIGIDAIRE REFRIGERATOR - 10 cu ft. \$25. MO9-9202.
- GE 36" ELEC STOVE - Stainless steel top, very good cond. \$30. Mildred, Ext. 7752.
- GUILD GUITAR - W/carrying case, excel cond & tune, steel strings, hollow body, model A-50. \$150. G. Baker, AT6-1218.
- AUTOMOTIVE - Spinner wrench, compression tester, timing lite. \$8 the lot. John, Ext. 2218.
- GAS STOVE - Clean, \$25; aluminum storm door, 28", \$20; maple bed, complete, \$20; bathroom sink w/faucet, \$5. S. Modesda, AN5-2889 after 6 p.m.
- ENFIELD #4 - Cal 303 British, Williams rear sight, excel. \$25. J. Kinney, 924-3783 after 5 p.m.
- BEDRM SET - 3 pieces, white, 2 yrs old, excel cond, used as spare rm furniture. \$100. Ext. 2287, 878-2702.
- ALUMINUM STORM/SCREEN WINDOWS - Self storing, 30x56, 28x54, 26x44. \$4 each. Ext. 2492.
- EXP' '67 TICKETS - 7 day youth passport. \$6. AT6-8517.
- 2 BOY'S 26" BICYCLES - \$10 and \$7. I. Lewis, Ext. 2936.
- HOT POINT ELEC DRIER - 8 yrs old, good working order, white. Yours for only \$25. R. Young, Ext. 591.
- DELMONICO 19" COLOR TV - Used only 8 mos. Best offer over \$225. J. Raynor, Ext. 7692, 878-1721.
- MOVIE CAMERA - 8 mm Revere, magazine, universal lens, fast & slow motions, single frame exposure, excel cond. Make offer. Ext. 379.
- WESTINGHOUSE ELEC STOVE & OVEN - Reasonable offer. A. Kreisberg, Ext. 2411.
- KITCHEN SINK - Dble bowl, dble drain w/base cabinet to fit, good cond. \$10. JU5-8322.
- COUCH - Lg, 6' between arms, dk green, good cond, always had slipcover. L. Suydam, AT6-1295.
- DISSTON POWER MOWER - Professional type, self powered, 6 hp Briggs & Stratton, recently overhauled, works well. Asking \$35. AT9-1339 after 6 p.m.
- BEAGLE - Male, 4 mos old, father & mother champion hunters. \$20. Ext. 445.
- TRUMPET - Getzen, purchased spring '67, used only 2 or 3 times, absolutely in brand new cond. \$85. Bill, Ext. 2393, 724-3035.

- 5' BATH TUB - LH drain, white. \$25 or will trade for good cond female bike. JU5-8322.
- FRIGIDAIRE REFRIGERATOR - Used, good cond. \$40. 325-9511 after 6 p.m.
- AM-FM-SW RADIO - Telefunken, table model, excel sound. \$35. 744-2480.
- WASHING MACHINE - Kenmore, 8 yrs old, needs some work, motor in excel cond. Best offer. 744-5431.
- GOING OUT OF BUSINESS - Playpen, \$5; portacrib, \$10; car bed, \$6; baby pullman, \$3. Olness, AT6-0414.
- TV - \$20; oval rug (9'x6'), \$15; crib w/mattress, \$10; wood playpen, \$4; slide projector, \$5; baby carriage car bed, \$3; garden chair, \$2; ski rack, \$3; steam iron, \$3. 281-7494.
- PLAYER PIANO - Can be put in shape with reasonable effort. AT6-0414.
- WASHING MACHINE - 7 yrs old. \$20. AT6-0414.
- UMBRELLA TENT - Excel cond, sleeps 5. \$40. Kahane, SH4-6636.
- 2 METER HAM STATION - Heath "Tower" transceiver, dual stacked halos, power supply and all cables. \$50. Buhl, Ext. 354.
- CAMPING TRAILER - '67 Cox Campshire, sleeps 6, incl table & screen door, used 3 wks, new cond. \$650. Buhl, Ext. 354.
- ODDS & ENDS - Mailbox, garden chairs, diaper pail, hassock, playpen, throw pillows, grass seed, aquarium, much more. 744-2480.
- HOT AIR FURNANCE - New, 10 yr warranty, will heat 4 sm rms. \$200. 751-1415 after 6 p.m.
- DANISH MODERN SOFA - 72"x30", never used. \$45. 751-1415 after 6 p.m.
- PIANO - Upright, beautiful tone & action, \$200; baby carriage, conv to car bed, \$10. 281-3729.
- CHORD ORGAN - Orcoa Electronic, 40 chords, 7 instruments, excel cond. \$250. R. Loper, Ext. 2845.
- SEWING MACHINE - Antique treadle type. \$15. Walt, Ext. 2152.
- SATION WAGON LUGGAGE CARRIER - Removable, size 63x43x6. Mrs. B. Naumann, 924-6458 after 6 p.m.
- ELEC HOT WATER HEATER - 30 gal. \$15. Ext. 567.
- BABY CRIB - Good cond. \$20. Ext. 2515.
- GERMAN SHEPHERD PUPPIES - AKC registered, beautifully marked, mild mannered. \$85 & up. 473-6171.
- CHILD CARE - Conscientious & reasonable, secluded area away from main hwy's. S. Lambeck, 924-4872.
- ½ ACRE WOODED CORNER PLOT - Approx 150' x150', triple A residential area, near beautiful Mattituck inlet. 281-9411 after 4:30 p.m.
- TOWER - 54' tubular tipover, w/tripod & guys. \$75. Ron, Ext. 2969.
- HAND CARVED MAHOG BUFFET - Lion-head pulls. Ext. 2881, 744-8473.
- MIMEOGRAPH MACHINE - Old but usable. \$10. Sue, 751-3551.
- FREEZER - 10 cu ft Hotpoint, mint cond, \$75; GE Roto-Broil, 1500w, 13"x20"x12", perfect, asking \$20. J. Hare, Ext. 691.
- WALKIE-TALKIES - ¼ mi range, very good cond. \$15. J. Dobesh, Ext. 2430.
- THE VISIBLE MAN - Science assembly kit, for study of anatomy, in box, never used. \$3. J. Dobesh, Ext. 2430.
- THINK-A-TRON - Electronic question & answer computer educational game for ages 9-13, comes w/300 questions, excel cond. \$4. J. Dobesh, Ext. 2430.
- GO-KART - 3½ hp Clinton En, 50 mph, custom candy apple green paint, 3½" slicks, only 104 days till Xmas. \$100. Ext. 2245 after 4 p.m.
- GAS CLOTHES DRYER - Sears Kenmore, like new, used less than 1 yr. Cost \$210, sell for \$125. M. Goldberg, Ext. 7674.
- POLLENEX DEEP HEAT MASSAGER - Dual selector controls for massage & heat, used twice. Retailled at \$35, yours for only \$25. H. Lobe, Ext. 2969.

- BROOKHAVEN - 8 rms, 1½ baths, colonial on bulk-headed lot, priv dock in rear, fine view of Bay in front, double garage, play area. \$33,000. AT6-0322.
- PT JEFF STATION - 4 bedrm high ranch on ½ wooded acre, liv rm, din rm, panelled kitchen & den, 20' dining deck, laundry rm, dble garage, 2 baths, s/s, w/w carpet. \$20,500. HR3-9180.
- ### For Rent
- 10x12 HIGH WALL TENT - Sleeps 6 comfortably. 273-6436.
- 3 RM COTTAGE - Furnished/unfurnished. \$85/mo. Ext. 2492.
- 5 RM HOUSE - 2 bedrms, 10 min from Lab, West Middle Island, newly decorated. B. Maiascia, 732-7939.
- FURNISHED HOUSE - 2 bedrms, w/garage, E. Patchogue, nice area. \$115/mo. Iwai, Ext. 2885, AT6-9767.
- 4 BEDRM RANCH - Shoreham, playrm, 2 baths, fireplace, sun deck, 2 car garage, air cond, wooded ½ acre, beach rights. 744-2480.
- 3½ RM APT - Pt Jeff Station, priv entrance & back patio, walk to shopping & train, swimming pool avail. \$136/mo incl heat & gas. Cammarano, Ext. 691, HR3-7142.
- BUNGALOW - Util, fully furnished, Blue Point, avail immediately. \$125. L. Kopp, EM3-6174.
- ### Wanted
- WOMAN - To care for 2 school age children, 2:30-5:30 pm, daily, my home, Bayport. HR2-1735 after 6 p.m.
- ROOMMATE - To share apt in Rocky Pt. \$65/mo. Ext. 595.
- SILVER DOLLARS - Liberty & Franklin ½ dollars, I will pay 33½% over face value. O. Belfiore, Ext. 7294.
- CLAM LOVERS - ½ price sale, 2 rakes, 3-pc aluminum handles, \$30 ea; tongs, 14' wood handles, \$20. Ext. 379.
- 2 SNOW TIRES - 6.50x13, reasonable. Torre, Ext. 423, 281-5708, after 6 p.m.
- 1 OR 2 SNOW TIRES - 800-8.20x15. Tramm, Ext. 7791.
- WHOEVER BORROWED DUMBELLS & WEIGHTS - From the gym, please return as soon as possible. Ext. 2934.
- TIRE - 7.50 or 7.75x14, must have good tread, prefer whitewall. R. Slade, Ext. 667, 589-0247.
- HOMES - For 2 salt & pepper kittens. George, Ext. 644.
- OSCILLOSCOPE - Ext. 2461.
- RADIO TOWER - For antenna farm. Ext. 638.
- BLACK & DECKER - Or Porter-Cable 4x8" reciprocating sander. Sherman, Ext. 2341.
- SINGLE BUNK SIZE MATTRESS - And/or springs. Mike, Ext. 2811.
- RUMMAGE - Clothing, bks, kitchen gear, etc, for Oct 7 Planned Parenthood Rummage Sale. Rau, Ext. 452, AT6-0451.
- HOMES - For 2 female kittens, 1 white w/spot, 1 tiger, 10 wks old, avail immediately. Paul, Ext. 2330, 878-1486.
- USED SPINET OR UPRIGHT PIANO - In good cond, to be moved after 10/1. \$100 maximum. Bon, Ext. 2766.
- "HE" BEAGLE FOR "SHE" BEAGLE - Objects honorable & matrimonial, must have papers. W. Dominy, Ext. 2528, AT6-1092.
- TANK - To hold water, approx 60"x72"x60", open 1 side. G. Fales, Ext. 2359.
- COMPANION - Female, to share house in Bellport. Ext. 2294.
- ### Carpools
- 2 DRIVERS FROM MILLER PLACE AREA - Wish to join or form larger carpool, Jacobs, Ext. 2955.
- DRIVER - To form 2-member informal carpool, vic. Circuit Rd Bellport, Jim, Ext. 7693.
- DRIVER - To complete 4-member carpool from South Bellport. Lomonosoff, Ext. 2488.
- PAYING RIDER - Wishes ride 3 days/wk, Tues, Thurs, Fri, Smithtown Blvd, Nesconset. Bob, Ext. 2167, 585-4973.
- PAYING RIDER - From N. Selden, Terryville area or corner Rt 112 & Old Town Rd, Coram. Ron, Ext. 2380.
- RIDE - From vicinity Taylor Ave, E. Patchogue. B. James, Ext. 2719, AT6-1246.
- FORM FLEXIBLE CARPOOL - Brentwood North. G. Rakowsky Ext. 7463.

Classified Ad Policy:

1. The Bulletin Board's classified section may be used only by active and retired Laboratory employees.
2. All items for sale or rent must be the advertiser's property.
3. Persons listing houses, apartments, or rooms for sale or rent, do so with the understanding that these must be available without regard to race, creed, color, or national origin.
4. Ads associated with a full- or part-time business cannot be accepted.
5. Ads should be restricted to 20 words or less and typed or

- printed on the form provided. (Additional copies of the form are available at the Bulletin Board office.) Twelve noon on Friday is the deadline for inclusion in the following week's issue.
6. Ads are run on a space-available basis; those not carried because of space restrictions will be held for inclusion in the next issue.
7. Ads are run only once and must be resubmitted if they are to be repeated.

- | | | |
|--|---|--|
| <input type="checkbox"/> For Sale: Auto & Auto Supplies | <input type="checkbox"/> For Sale: Houses | <input type="checkbox"/> Carpools |
| <input type="checkbox"/> For Sale: Boats & Marine Supplies | <input type="checkbox"/> For Rent | <input type="checkbox"/> Check <input type="checkbox"/> the heading applying to your ad. |
| <input type="checkbox"/> For Sale: Miscellaneous | <input type="checkbox"/> Wanted | Print or type your ad in 20 words or less. |

(Name & Phone No. To Call)

If this ad concerns housing for sale or rent, such housing is available without regard to race, creed, color, or national origin.

Employee's Signature..... Life No. Ext.

Send to: BULLETIN BOARD, 43 Brookhaven Avenue