

BULLETIN BOARD

Volume 21, Number 49

Published by the BNL Public Relations Office

December 14, 1967

Cavid Erginsoy Dies in Turkey

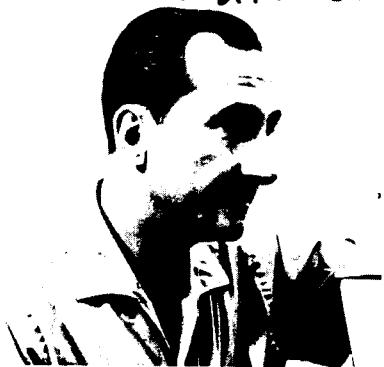
Dr. Cavid Erginsoy, member of the Solid State Group of the Physics Department, died of a heart attack in Ankara, Turkey, on December 7. He was on leave from BNL to the Middle East Technical University in Ankara as Professor of Physics.

Transcending land and sea boundaries of nations and continents, Erginsoy was of the new breed of men whose home is the world. Born in Ankara in 1924, he was graduated from the University of London in 1946 with the degree of Bachelor of Science in Engineering, and received his doctorate in Physics from the same institution. Serving with the Turkish Army from 1952 to 1954, he was later Vice Chairman of the Turkish AEC Scientific Advisory Committee and was in charge of their Research Reactor Project. Following this, he became Associate Professor at the Middle East Technical University. In 1958 he joined the staff of the International Atomic Energy Agency in Vienna in the Division of Reactors, and remained with the Agency until 1962.

In July of 1962, Dr. Erginsoy came to Brookhaven, first as a visitor, then later becoming a Staff member, receiving his tenure appointment as Physicist in 1966.

In connection with the BNL Lecture Series, in April of 1965 he delivered a lecture entitled "Passage of Charged Particles Through Crystal Lattices." In April of this year, he introduced Sir Isaiah Berlin, an AUI Distinguished Lecturer, and was moderator of the question-answer period following Dr. Berlin's address.

Working primarily in solid state theory and radiation effects, he was lately associated with scientists of Bell Telephone Laboratories and Rutgers University, working with them on the influence of lattice structure on the motion of charged particles in crystals.



8-290-67

He was a member of the organizing committee for the September 1967 International Conference on Solid State Physics in Research with Accelerators held at BNL and sponsored by the USAEC. In October of 1967, Erginsoy was awarded the Turkish Science Prize for "contributions to solid-state physics, and, in particular to the interaction of radiation and energetic particles with crystals."

Dr. Erginsoy, formerly of Bellport, is survived by his wife and two children who were in Ankara with him when he died.

A man of science, erudite, cultured, a bel esprit, Dr. Erginsoy will be missed by the Laboratory, the scientific community, and by all who knew him.

Nassau Planners View Lab Facilities



Members of the Nassau County Planning Commission toured several of the BNL research facilities last week after a luncheon in the Brookhaven Center. The group was shown the color film *Brookhaven Spectrum*, and then taken to the HFBR where they are shown above looking at fuel element shipping casks. Also visited were the AGS and the Ecology Division of the Biology Department. Photo by Humphrey

AEC Cites Three BNL Cost Reduction Items

Three cost reduction actions taken by Brookhaven have been mentioned in a recent issue of the AEC publication *Cost Reduction Abstracts*. The booklet circulates notes on effective actions by AEC contractors in hopes of stimulating additional ideas and techniques of cutting costs.

Rudolph Hoder of the Physics Department describes a simplified positioning and adjusting mechanism for wire spark chamber particle detectors. This new design has reduced the cost by two thirds.

In the Hot Laboratory Division, Louis Stang reports using plastic instead of glass shipping containers for ion exchange resins. The new container will effect a saving of \$3.10 per unit.

Donald MacCornack of Plant Engineering and Planning describes a fast acting blast valve to protect filters in a fresh air supply system from a sudden increase in pressure. The unit can be assembled from commercially available valves, switches, magnets and relays at a considerable saving of cost.

The booklet quotes President Johnson from a July 1967 speech when he said "... you cannot cut costs in the budget office if you don't begin at the workbench."

HP Society Taps Two BNL Staffers

Andrew Hull, President of the Greater New York Chapter of the Health Physics Society announced last Wednesday that Charles Flood of BNL has been re-elected Treasurer of the organization for 1968.

Hull, who was president-elect and program chairman last year, took office as president at the December 6 meeting of the group. Both Hull and Flood are members of the Instrumentation and Health Physics Department at BNL.

Naval Group Cited

The Naval Reserve Research Company 3-9 has been chosen to compete in the National Competition for the "Excellence Award." The Unit, under the command of Commander Leonard A. Baker, Jr., USNR-R for the past year, was cited as the best Research Unit in the Third Naval District. The Unit performance at the Annual Military Inspection, as well as its performance during the year in areas such as recruiting, retention, drill programming, and general administration, were the bases for the selection.

The Unit is currently under the command of Capt. V.P. Bond, MC, USNR-R.

George Maxey Joins Faculty at St. Johns

On January 2, 1968, George W. Maxey will leave the Laboratory to assume the post of Assistant Dean of the Junior College of St. John's University in Jamaica, New York. In this capacity, Mr. Maxey will assist with the curriculum, program planning and scheduling, and student counseling. He will assume teaching duties in Business Administration at a later date.

Maxey came to Brookhaven in 1954 from the University of Illinois, College of Commerce and Business Administration, where he held the rank of Assistant Professor. While at Illinois, his work included coordinating educational programs between the business community within the state and the college.

Staff Assistant for the past six years at BNL, he has been part-time lecturer in Management and was Major Advisor to the students majoring in Business Administration at Adelphi College in Oakdale.

Mr. and Mrs. Maxey live in Bayport with their daughter Melanie who is a nurse at St. John's Hospital in Smithtown.

Neutrino Pictures Deep Subject For Staff Cameraman

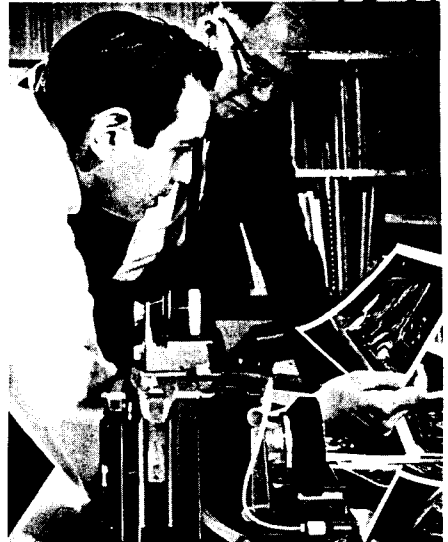
Lead, South Dakota is one of the more remote locations for an experiment conducted by BNL. To get to Lead, the experimenter must take a plane to Denver, an airshuttle to Rapid City, and a car to Deadwood, before finally arriving at Lead.

Mort Rosen, one of BNL's staff photographers, was recently given an assignment from the Chemistry Department to photograph the Solar Neutrino experiment at the Homestake mine in Lead. Rosen, with Gerhart Friedlander and Morris Perlman of the Chemistry Department made the journey to Lead, and joined Ray Davis and John Galvin, who were already at the experiment site.

After a nights rest, the team arose at 6 a.m., and by 7 a.m. was at the mine entrance ready to ride the Yates Shaft cage down to the 4,850 foot level.

"This is no ordinary elevator," said Rosen, "It travels at about 36 mph, and is sort of noisy. The hoist is water-lubricated, and the cage gets a bit damp." The 4,850 foot shaft station is just about sea level, and air conditioning is necessary to cool the chambers enough to allow comfortable working conditions.

The photographic assignment that Rosen had to complete was for color and black and white pictures of the entire experiment showing tanks and instrumentation. Because of the poor lighting, Rosen chose to use flood lights instead of flash to keep bulb changing to a minimum. Most of the pictures were taken on 4"x5" film with a Linhoff Technika camera, using normal and wide angle lenses. Flood lights were set up on stands, and foil was used for reflectors where needed. 12-233-67



Photographer Mort Rosen shows prints to Ray Davis after returning from South Dakota.

"One nice thing about shooting in a mine" Rosen said, "is the ability to convert to a darkroom by simply turning off the lights. Nothing is blacker than a room 4,800 feet from the nearest sunlight." The

(continued on Page 2)

Henry Grahn To Become Physics Administrator

On January 1, 1968, Henry C. Grahn will become Administrative Officer for the Physics Department. He will be responsible for the budget planning for the department as well as technical personnel and administrative procedures. He will be the general administrative liaison between the department and other areas of the Laboratory.

Edwin T. Bailey will continue as Administrative Assistant for Purchasing, and Frederick Van Dervoort will continue as Administrative Assistant for General Services.

Underground Neutrino Trap Photographed



Ray Davis, at bottom of ladder talks to John Galvin who is on the cat-walk a top of the 100,000-gallon tank of the Neutrino experiment.



Morris Perlman (left) Gerhart Friedlander (center) and Ray Davis, Jr. (right) in control room at Neutrino experiment.



Ray Davis fills dewar in mine shaft.

(continued from page 1)

solar neutrino experiment is located deep down in the gold mine in order to shield out cosmic rays and allow neutrinos to pass through a 100,000 gallon tank of tetrachloroethylene where they may be captured by an atom of chlorine-37.

At regular intervals Raymond Davis, Jr., and others from the Chemistry Department travel to the mine to collect samples from the filter on the underground tank and return them to BNL for analysis.

The BNL team which enters the mine each morning generally stays down until evening, and showers before leaving the mine at 7 p.m. While the experimental area used by BNL is relatively clean, the rest of the mine is quite dirty and coveralls are a "must" for each workday. For people who get squeamish riding the elevators at the Empire State building (1,250 feet) the hoist at Homestake should be avoided. The BNL experiment is not at the lowest level, as other shafts at the mine go down as deep as 6,800 feet, definitely no place for a sufferer from claustrophobia.

Back on the surface, the scientists and technicians from BNL gather in the Gold Run Inn for coffee before dinner. Other guests in the hotel restaurant are generally miners, lumbermen and cowboys.

The town of Lead (which incidentally is pronounced Leed) is on the side of a hill below the entrances to the Homestake Mine. There are still many wooden sidewalks raised up from the ground to allow access to the buildings during the heavy winter snow storms.

While at Lead, the BNL team has little time for sight-seeing, but has managed to see some of the workings in the gold mining operation. Pieces of Fool's Gold may be seen in the rock walls of the passageways, but very little metallic gold is evident. The proportions are roughly one ounce of gold recovered from each ton of ore processed.

After four days of picture taking, Rosen completed his photographic assignment and returned to BNL to process the film that he had exposed. Photographic assignments at BNL have been completed high in the air, on remote Pacific Islands, and deep down in mines as well as in the routine manner here on site at Upton, Long Island.



Morris Perlman in pump room. Chain-link fencing bolted to walls and ceilings prevents rock fragments from falling.

Confucius Say: Chinese Food More Than Water Chestnuts

How long has it been since you've eaten an authentic multi-course Chinese meal; one complete from appetizer to sweet. Have you ever tried a well-chosen selection of main courses of contrasting, balanced flavors and textures cooked by an authentic Chinese culinary artist? If you're thinking of the last time that you opened a can or thawed a package of frozen Chinese food, there is something definitely lacking in your gourmet education. Instead of the normal Chow Mein, Chop Suey, or Fried Rice (which incidentally, is not Chinese), you can get an authentic and delectable Chinese cuisine, prepared in your own home by Dr. Martin J. Lee, of the BNL Accelerator Department.

Cooking has been Dr. Lee's favorite pastime since childhood. His cooking ability has been certified by his Boy Scout troop and his college fraternity house. Dr. Lee, who can be reached on Ext. 2251, will supply all the ingredients (including fresh meat) and the cooking utensils. All you have to supply is a hearty appetite, and \$7.50 per person. It takes Dr. Lee and his wife about a day to prepare for cooking the ten or eleven course meal. The actual cooking time is about an hour and a half for each course. Dr. Lee uses no recipes, but relies on his memory to duplicate flavors that he has enjoyed.

Dr. Lee, who was born in Canton, China, developed his culinary ability through watching his mother prepare the family meals. After coming to the United States in 1952, his family settled in Stockton, California, where he attended Stockton Junior College. He received his BA degree from the University of California at Berkeley. Dr. Lee went on to earn his Masters degree at New York University. He worked for five years at the Stanford Linear Accelerator Center (SLAC) and while at Stanford, received his PhD. Dr. Lee has been at the Lab for three months and in order to meet people has recently decided to share his cooking ability with anyone who appreciates Chinese food as it was meant to be served.

After all what have you got to lose except a few shelves full of Chun King?

BULLETIN BOARD

Published Weekly for the Employees of
Brookhaven National Laboratory

CARL R. THIEN, *Editor*
DOLORES DEL CASTILLO, *Editorial Assistant*
CLAIRE LAMBERTI, *Copy Preparation*
40 Brookhaven Ave. Upton, N.Y. 11973
Telephone 516 924-6262 Ext. 7238

NORBERT J. DERNBACH
Public Relations Officer

Here and There

Dolores del Castillo

On December 5, 1967, the U.S. Patent Office issued three patents to the USAEC for inventions made at BNL. U.S. Patent 3,356,254 for Glove Port for Dry Box which was invented by Walter W. Becker of the Nuclear Engineering Department. Ronald Withnell of the Chemistry Department was the inventor of U.S. Patent 2,356,530 for Radiometric Film. William B. Sampson and Richard B. Britton of the Accelerator Department and P. Gerald Kruger, Consultant, were the inventors of Quadrupole Magnet for which U.S. Patent 3,356,976 was granted.

Robert J. Spinrad (I&HP) lectured at Williams College on December 5. The title of his lecture was "On-Line Computers in Research."

George B. Collins (Physics) lectured at the University of Notre Dame yesterday. The title of his lecture was "What Happens When a Proton Hits a Proton."

Alan Morton of Business Week is at the Laboratory today on a general tour.

George M. Woodwell (Biology) recently participated in a Civil Defense Short Course at the University of Chicago, Illinois.

Harold H. Smith (Biology) recently conferred with reference to genetics research with Drs. A. Lang and J. Scandalios at MSU/AEC Plant Research Laboratories in East Lansing, Michigan, and Dr. M. Zelle at Argonne National Laboratory.

L.P. Hatch, John Pontieri and George Weth (all of NED) recently spent several days at the East Coast Engineering Research and Development Test Station of the Office of Saline Water in Wrightsville Beach, North Carolina. The tests conducted on a fluidized heat exchanger, in cooperation with Baldwin-Lima-Hamilton who is under contract to the OSW, were the result of several years of experimentation here at the Laboratory.

John Bland and David Ellman (ADP) attended the 25th Guide International Conference of Data Processing Equipment Users held in Los Angeles, December 5-8.

One-Two-Three

One-Two-Three . . .

There have been requests to have an Exercise Class for the wives of BNL employees. If there is enough interest in such a project, it is planned to have 8 one-hour classes to be taught by Mrs. Edward der Mateosian. Classes would be held on Thursdays from 10 to 11 a.m. in the gymnasium, the first class to be held on January 18. A fee of \$10 would be charged, payable at the first session.

Interested wives please call Mrs. Adelaide Flatau (744-9436) or Mrs. Roberta Zucker (281-6504). Please specify if babysitting services will be needed.

Glass Process In Production Run 12-182-67



Technician Joseph Fedelem (left) and Engineer Ed Tuthill of the Nuclear Engineering Department examine a slug of phosphate glass similar to the radioactive one produced at Batelle-Northwest using the BNL developed waste disposal process. Photo by Rosen

Wastes (continued from page 1)

materials, and then checked for engineering feasibility. After the "cold" runs were completed, the plants were then reassembled and "hot" runs were made. Less than two weeks ago BNL's process was tested with high level wastes, and Engineer Tuthill and Technician Fedelem went to Battelle to observe the results.

Approximately 400,000 curies of mixed fission products in 350 gallons of liquid were converted to 30 gallons of monolithic glass. This glass was cast into a mild steel pot 12 inches in diameter by eight feet long. The glass slug thus produced represented ten-year old waste from reprocessing reactor fuel which produced nearly 500 million kilowatt hours of electricity.

The phosphate glass process shows promise of commercial acceptance because of its simplicity and economy. It is an all-liquid system until the final product, and requires inexpensive mild steel for final containment. It is proposed that the glass slugs will be stored in un-used mines for the hundreds of years necessary to dissipate the radioactivity of the contained wastes.

At Battelle, each of the processes will be evaluated and offered for commercial use. Here at BNL, the process will be worked on to improve and refine techniques as well as to develop methods of disposal of advanced types of wastes that are now accumulating.

Revised Safety Manual

A revision of the BNL Safety Manual has recently been distributed. All present holders of the manual should have received a copy of the new revision.

Holders of the manual who have not received the revised material are asked to contact the Safety Services Office on Ext. 591.

Hospitality News

Because of the Christmas holidays, there will be no Coffee Meeting this month.

The next regularly scheduled Meeting will be held on Monday, January 29, 1968, from 10 a.m. till noon.

Do you ever suffer from mid-winter slump? The after the holidays let-down? Many people do, and one of the main reasons for the feeling is that the average person does not get enough exercise in winter.

If there is enough interest, it is planned to have a Ladies Exercise Class for the wives of BNL employees. The 8 one-hour sessions would be geared to muscle toning rather than slenderizing. Mrs. Edward der Mateosian would be class master, and the classes would be held on Thursdays from 10 to 11 a.m., beginning January 18, 1968.

Please call Mrs. Adelaide Flatau (744-9436) or Mrs. Roberta Zucker (281-6504) if you are interested. Be sure to mention if you will need babysitting services.

Recreation Facilities

The Recreation Office will be closed all day on Friday, December 22, and remain closed through Monday, January 1. It will reopen on January 2, 1968 for the conduct of normal business.

The Recreation Building, Swimming Pool and Gymnasium will remain open as per their normal schedules throughout the month of December, with the following exceptions:

- Swimming Pool - Closed - December 22 & 26
- Recreation Building - Closed - December 25, 26, 27, 28

Theater Group To Sponsor Junior Acting Workshop

A Junior Workshop is scheduled to begin after the first of the year if there is sufficient interest. A series of fifteen weekly sessions will be conducted by Mrs. Bonnie Hughes in Mime, Voice and Acting Techniques.

Mrs. Hughes, wife of Garrett Hughes, AGS, has a degree in Theater from Michigan State, with advanced study at the University of Michigan. She has taught theater arts to children for four years. The fee for the course is \$15.00. The workshop will consist of two groups: ages 10-14 and ages 15-18. Enrollment is limited to children of Lab employees, with a maximum of 15 in each age group. Registration is on a first-come basis. Applications may be obtained at the Recreation Office. For further information, call J. Friedman, Ext. 2548.

It Was Go All The Way

The BLAST Rally held last Saturday evening, was run over some of the more interesting roads in Suffolk County, ending up at the Sportsman's Rest.

Rudy and Joan Becht, from Bay Shore, won with an amazingly low score of 1 point, meaning that they arrived at the finish only one second off the prescribed time. They were driving in their Volkswagen "bug."

Second place went to Frank and Ronnie Evans, in a Corvair, with third place going to Pat Neilson, driver, and Virginia Giorano, navigator, in a Chevy II.

Dead last trophy went to Jim Mallins, with Kathy Auther doing the navigating in a Chevy Chevelle.

At the finish there were lots of second guesses, but everyone agreed that the rally was a huge success.

Softball Committee

Recruits Members

Employees interested in becoming a member of the Softball Committee, are asked to contact Chairman Mike Zguris, Ext. 311.

Mike says, "Here's your chance to do something for the league for a change, instead of just complaining when things aren't done your way. Call me and we'll put you and your ideas to work."

Bank Hours

The Peoples National Bank on site will be open on December 22 from 8 a.m. until 12:30 p.m.

Gymnasium Schedule

Fall - Winter - Spring 1967-68

The following scheduled activities have first priority for use of the Gymnasium. Individuals wishing to play badminton, table tennis, lift weights, shoot baskets, etc., may do so whenever General Activities are scheduled or at other times when space is available and their activity does not interfere with the League and Club Programs.

- Monday
 - 5:00-7:00 p.m. Volleyball League (Men's)
 - 7:00-9:30 p.m. General Activities
- Tuesday
 - 5:00-7:00 p.m. Volleyball League (Men's); Judo Club
 - 7:00-9:30 p.m. General Activities
- Wednesday
 - 5:00-7:00 p.m. Archery Club
 - 7:00-9:30 p.m. General Activities
- Thursday
 - 5:00-6:15 p.m. Judo Club
 - 5:15-9:30 p.m. Basketball League (4 games: 5:30, 6:40, 7:50, 9:00)
- Friday
 - 5:00-9:30 p.m. Tennis (by posted self-service reservation)

Volleyball

by John T. Sears

The league has swung into action with a full complement of 8 teams. After three weeks, some key matches have already been held. Last year's champs added personnel and split into two teams. The Atom Spikers II then took three games from Atom Spikers I 21-8, 21-11, 21-13, in the first match of the season. Last year's runner-ups then defeated Atom Spikers I, 21-12, 21-17, 21-17, last week to remain undefeated through nine games. In other action last week, Atom Spikers II remained undefeated and tied for first with three victories over Bubble Boys II, 21-9, 21-18, 21-19. The Spikers and Atom Spikers II do not meet in a possible show-down clash until the last match of the first half of the season. Bubble Boys I defeated the Barbaryons 21-8, 21-19, and 21-9. After early reverses, the Net Losses are coming along with three victories over the Backbones, 21-13, 21-15, 21-6.

Standings:	W	L
Atom Spikers II	9	0
Spikers	9	0
Net Losses	5	4
Bubble Boys I	5	4
Atom Spikers I	3	6
Bubble Boys II	2	7
Barbaryons	2	7
Backbones	1	8

Basketball

by George Latham

In last week's games the Knacks downed A M D 38-35 behind Gary Skarka's 15 point effort. Les Lawrence had 19 for A M D. Mike Zguris had a hot night scoring 17 points to lead the Rat Pack past the Old Timers 39-20. George Leverock had 13 points for the Old Timers. Biology edged the Dirty Sox 33-32 as Nick Combatti scored 20 points. Ed Gill had 11 for the Dirty Sox. With Dave Menago hitting for 15 points, the Highballs took the Stratums 48-35. Juan Figuera had 18 points for the losers.

The next league action is Thursday night, January 4th - come out and see your team in action.

The standings:	W	L
Associated League	2	0
Knacks	2	0
Rat Pack	1	0
A M D	1	1
Physics	0	1
Old Timers	0	2
Universities League	2	0
Biology	2	0
Highballs	2	0
Dirty Sox	0	2
Medical	0	1
Stratums	0	1

USNR Research Co. 3-9 Brookhaven National Laboratory Upton, New York YA 4-6262, Ext. 2860

Drill Schedule

For Quarter Ending 31 March 1968

- 17 January
 - Nuclear Power for Space
 - David Schweller, AEC
- 14 February
 - Current Biosatellite Experiments
 - Arnold Sparrow, BNL
- 21 February
 - Puerto Rico Nuclear Center
 - R.C. Anderson, BNL
- 13 March
 - Calculation of Decompression Schedules for Deep Sea Dives
 - Capt. J.S. Robertson, BNL
- 20 March
 - Radiological Assistance Program
 - Speaker to be Announced

Classified Advertisements

Autos & Auto Supplies

AMERICAN & IMPORTED CAR PARTS - Large assortment, Champion Spark Plugs, fan belts, Pole Thermometer. 50% off list price. D. Greenberg, Ext. 2744.

68 STATION WAGON - Chevrolet Impala, 9 psgr, r/h, safety belts, luggage top rack, 1000 mi. \$3500. 281-5062, 281-7765 evenings.

45 DODGE POWER WAGON - 1 ton Pick-up, 8' plow, 4 wheel drive, good cond. \$450. Gary, Ext. 2744, 732-3135.

2 AUTO RIMS - 13", w/4 bolt holes, white. Mike, Ext. 7174, Ext. 2420.

2 RACING SLICKS - 8.50x14. \$40. B. Edwards, after 5 p.m. at the hospital.

66 RAMBLER - American 220, 4 dr sedan, r/h, auto trans. Larry, Ext. 2441.

2 SNOW TIRES - Like new, 700x13. \$15 for the 2. Mildred, Ext. 7752.

5 WHEELS - 14", from 63 Ford, w/wo tubeless valve stems & baldies. R. Bergoffen, Ext. 7677.

RADIO - Transistorized, push button, from 63 Ford, in perfect working order, w/wo antenna. R. Bergoffen, Ext. 7677.

ASSORTED BODY PARTS - Spare doors, fenders, etc, from 63 Ford Station Wagon. R. Bergoffen, Ext. 7677.

65 VW MICROBUS - Sunliner Deluxe, A-1 cond. \$1450. Charlie, Ext. 7333, EM3-2042 after 6 p.m.

59 RAMBLER - Station Wagon, good running cond. \$100. 878-1719.

63 FORD - 6 cyl eng, low mi, burns no oil, w/wo clutch & 3 spd stick trans. R. Bergoffen, Ext. 7677.

61 FALCON - Station Wagon, needs rear end repair. \$50. Ext. 2948.

58 CHEVROLET - Station Wagon, 6 cyl, auto trans, runs good. \$65. Matko, Ext. 613.

HARD-TOP FOR TRIUMPH TR4 - White, fiberglass, w/ cloth lining & wrap-around rear window, excel cond. S. Spark, Ext. 2442.

63 CADILLAC - Convertible, green w/leather interior, cruise control, tilt steering, excel all around. \$1695. AT6-9260 evenings.

63 KARMANN GHIA 1500cc - 55,000 mi, radio, motor & body in good cond. \$650. A. Watts, Ext. 2846, SH4-5926.

2 SNOW TIRES - Whitewall, 6.00x13. \$10. Fred, Ext. 2380.

62 RAMBLER - 2 dr, 6 cyl, std trans, new battery, motor in excel cond. very reliable transportation. One price - \$225. Russo, Ext. 7609, 744-8332 after 7:30 p.m.

66 NSU "1000" GERMAN SEDAN - Red, like new, low mileage, orig owner, 32 mpg. \$1095. Ext. 2393, 724-3035.

64 VW - Square back, green, 37,000 mil, excel cond. \$995. M. Hansen, Ext. 2389.

61 VALIANT - Plymouth, excel cond, 5 new tires, auto trans, r/h, Sacrifice, \$325. Mary, Ext. 7426, 286-8620.

63 PONTIAC - Convertible, blue w/white top, ps/pb, r/h, new tires, carefully maintained, one owner. Al, Ext. 2152, 475-0549.

SEATS, RADIO & HUB CAPS - For 64 VW Bus. P. Ettari, Ext. 2407, 273-6436.

57 FORD - Good transportation for short trips. Reasonable or unreasonable offers considered. Ext. 2716.

64 VW - 36,000 mi, excel cond, blue, extras. \$850. John, Ext. 7478.

2 TIRES - 6.50x13, black wall, nylon, 2 ply. \$15. GR5-7654.

63 CHEVROLET IMPALA - 9 psgr Station Wagon, immaculate cond, 41,000 mi. Lou, Ext. 2126.

49 JEEP - 4 w/d, rebuilt 53 eng, 8 mo old. \$500. Jerry, Ext. 2117 after 4 p.m., 475-5196 days.

67 VW - R/h, seat belts, w/snow tires. Nick, 281-7765 evenings.

64 PONTIAC GTO - Hardtop, 4 spd, new tires, excel cond. GR5-5894.

61 RAMBLER - 4 dr, std trans, good 2nd car. \$150 firm. B. Schermer, Ext. 541.

Boats & Marine Supplies

OUTBOARD MOTOR GAS TANK - 7 gal, pressurized, like new. New \$30, will sell for \$15. Ext. 7335, GR5-1997.

HANNON SURFBOARD - New, 10'6", used once, red foam stringer. Paid \$189, will sell for \$140 firm. 567-1009.

SURFBOARD - 9'6", good cond, only used few times, no dings. AT6-0269.

FIBERGLASS SAILBOAT - "Sunfish", never used, still in shipping carton, the ideal Christmas gift. L. Decker, Ext. 2431.

21' FINLANDER SKIFF - W/shelter cabin, 65 hp universal, Monel gas tank, head, full canvass, wintercanvass, compass & many more extras. \$1500. Ext. 7166.

56 CELEBRITY 20' SAILBOAT - Keel, deck & hull fiberglassed, sails, mooring, etc. \$500. P. Bodlaender, Ext. 386.

55 CHRIS CRAFT 30' - Twin 150 Interceptor, fb, df, ss, sleeps 4. \$3500. LT9-5649 after 6 p.m.

Miscellaneous

KASTLE METAL SKIS - Giant Slalom, 220cm, Look-Nevada safety bindings. \$45. Wolf, Ext. 2282.

ICE SKATES - Boys, sizes 7&8, like new, used once. \$6/pr. A. Marino, Ext. 2573.

KITTENS - 1 calico female, 1 all beige male, just right for Christmas. Tony, Ext. 2733, 826-5542.

MAGNAVOX HOME ENTERTAINMENT CENTER - 4 yrs old, 21" TV, stereo & AM/FM radio, Early American cabinet, excel cond. \$149. B. Hambley, EM3-6150.

PARKWAY SHORTY WETSUIT - Men's size SM, used once, like new. Asking \$20. Ext. 542, AT6-3650 after 5 p.m.

STEREO TURNTABLE - 3 spd, manual operation. Reasonable. P. Ettari, Ext. 2407, 273-6436.

2 GERMAN SHEPHERD PUPPIES - Males, 6 wks old, lovely Christmas gift. Yours for the asking. Scotty, 732-4031.

DARE DEVIL TRIK TRAK - 11 pieces of Trak for 4 Triks, slightly used. \$10. Ronnie, Ext. 2198.

CANNON PERCALE - Unopened package, wide King size sheets, 108"x120", long fitted bottom for 78"x80". \$12. Ext. 7148.

TAPE RECORDER - Webcor-Stereophonic, excel cond. Orig \$260, sacrifice \$100. Ext. 2840.

ADMIRAL CLOCK RADIO - In perfect cond. \$10. Mildred, Ext. 7752.

B B GUN - Daisy, good cond. \$10. Gordon, Ext. 2416.

GIRLS BIKE - 24", w/basket, fairly good cond. \$5. McRickard, Ext. 2165.

DOUBLE BED - Foam mattress, box spring, frame on wheels, wrought iron headboard. Mike, Ext. 7174, Ext. 2420.

HO TRAINS - Track, switches, new power pack, loco, some cars. Ray, Ext. 2962.

MEN'S FIGURE SKATES - 2 pr, sizes 9 & 11; 1 pr women's figure ice skates, size 8. Bob, Ext. 2588.

CORNER LOT - Wading River, 1.3 acres, atop hill, treed. Asking \$7000. Ext. 2981, 289-5851.

GAS STOVE - 4 burner, 30", natural gas. \$30. 878-1719.

PLAYER PIANO MUSIC ROLLS - For all Player Pianos, old & new, over 2500 to choose from. P. Sparrow, Ext. 2478, 727-4859.

BED BOARD - 30"x59", for twin bed. \$3. 929-6261.

SINGER CONSOLE - \$30; Singer Buttonholder w/all sizes of templates in reg & keyhole. \$7.50. 929-6261.

HOOVER UPRIGHT VACUUM - Cleaner w/builtin light. \$7.50. 929-6261.

35MM CAMERA PRAKTICA - F2.9 lens, single lens reflex, 1/2 - 1/500 shutter, case & flash gun. \$30. McRickard, Ext. 2165.

IRON - Steam & dry, GE. \$5. Matko, Ext. 613.

ORIGINAL OIL PAINTINGS - Imported from Italy, ideal Christmas present for those you love. Wholesale prices from \$5 - \$100. R. Foukal, Ext. 481, 281-6372.

PRE-SCHOOL CHILD CARE - By day or week. PA7-0283.

HEATHKIT STEREO UNIT - Preamp A141A; FM tuner, AJ12; 80 watt amp, AA121; turntable, RP3; GE-VR11 diamond; \$40 each or \$140 total. Ralph, Ext. 7193.

TYPEWRITER - Royal Portable, old but in excel cond. \$20. Ext. 354.

BOWLING BALL - Men's 16 lb, bag, shoes, excel cond. \$20. Susan, Ext. 2180.

HI-FI - Dynakit amplifier, 60 watts, Heathkit re-amp. M. Tainiter, Ext. 2728.

2 MOVIE CAMERAS - 8mm; Keystone K-32 Olympic w/case, \$15; Kodak III A8 Zoom Electric Eye, \$35. Kahane, SH4-6636.

BRONZEWARE - From Thailand, rare, beautiful & usually expensive, 48 pieces (8 place settings) + 6 serving pieces. \$50. Ext. 2393, 724-3035.

2 HIGH RISER FOLDING BEDS - 33x79, clean, good cond. \$30 each. Ext. 2318.

GRAND PIANO - Sohmer, 6'3", very good finish, action recently adjusted. \$400. Ext. 7235.

AQUARIUM - 30 gal, show tank, full reflector, piston pump, 75 watt heater & stand. \$45. EM3-6888 after 5 p.m.

FRENCH POODLES - Miniatures, AKC, 5 wks old, silver, males. Pat, Ext. 358.

BABY CARRIAGE - Atlas Coachette, navy w/accessories & mattress, perfect cond. Paid \$85 will sell for \$50. Lou, Ext. 2126.

TV - 24" Magnavox, A-1 shape. \$50. 751-0923 after 5:30 or all day Sat.

KNIESSEL "COMBI" SKIS - W/bindings, used but in good cond, 205-cm, Meergans/toe & Dovre/heel release bindings. Borg, Ext. 2924.

40" KENMORE GAS RANGE - A-1 cond, glass door bake oven, broiler oven, storage drawer. GR5-0124 after 6 p.m.

COMPLETE HEATING SYSTEM - Steam boiler, burner & controls, 9 radiators, piping, oil tank, have changed to electric heat. \$550. GR5-0124 after 6 p.m.

DAN LURIE BARBELL SET - 110 lb, very good cond, \$10; Banjo, 5 string Stradolin, very good cond, \$40. Margaret, Ext. 7422.

ENGLISH POINTER PUPPY - AKC, 7 mo old, shots, champion bloodlines, wonderful w/children. \$100. GR5-7654.

2 BOYS BICYCLES - 20" Sears Roebuck brand, good cond. \$15 each. GR5-7654.

HEARING AID - New cond, shirt pocket type, foreign make. \$15. Ext. 2594.

FREE - "SNOOPY" look-alike, even answers to that name, housebroken, loves people! Ext. 2808.

TIRED OF CHOP SUEY? - Treat your taste buds to an authentic gourmet Chinese dinner prepared in your own home by expert chef. 475-0647.

PHONOGRAPH W/CABINET - Good cond. \$20. Matko, Ext. 613.

WASHER - Wards Signature, 16 lb, 6 cycle, 2 spd, variable water level, bleach dispenser, used 1 yr, copper tone. \$180. B. Kinsey, Ext. 7688, 286-0407.

Houses

BROOKHAVEN VILLAGE - 6 rm ranch, 15 min from Lab, 2 full baths, 3 bedrms, full cellar, fireplace, 125' front wooded lot. \$22,000. Jim, AT6-0024 after 6 p.m.

EAST SETAUKET - Split Level, 7 rms, 3 bedrms, 1 1/2 baths, family rm, utility rm, basement, garage, s/s, fully landscaped, 1/2 acre wooded lot. \$19,800. Walter, 473-2673.

BLUE POINT - The only avail waterfront property, high & dry house on 141'x118' corner plot, walking distance to stores, beach & church, inspection invited. P. Ettari, Ext. 2407, 273-6436.

PORT JEFFERSON VILLAGE - 4 bedrm Colonial, on .4 wooded acre, desirable, low tax area, many extras. \$26,990. HR3-8958.

BROOKHAVEN VILLAGE - 4 bedrm ranch, liv rm, din rm, porch, 1 1/2 baths, 2 car garage, 1 1/2 acres fully landscaped, 150' frontage. \$31,000. AT6-1358.

For Rent

EAST MORICHES - 3 bedrm house, living rm, fireplace, dining rm, electric kitchen, garage. \$150/mo. Nancy, Ext. 2114.

Wanted

NEED A BABYSITTER? - I will do it during the day or a night occasionally, a mother of a 20 mo old child. GR5-1510.

GIRLFRIEND - For 2 yr old AKC reg male Basset Hound. Fee to be arranged. Ext. 7148.

COINS - All collectible US coins wanted, no amount too small or large. J. Giordano, Ext. 3224, 928-1272 after 6 p.m.

SKI BOOTS - Size 8. P. McCabe, AT9-0983.

AR2a SPEAKER - Walnut, Kasha, Ext. 2948.

SHOP MANUAL - For 60 Corvaire & 61 Corvaire supplement. Ext. 7782.

LYMAN "LUBRISIZER" BULLET - Sizing press for ardent ammunition reloader, have own dies. Ext. 354.

SKIERS - To share driving & expense for trips to Vermont ski areas all season. Al, Ext. 344.

ROOMMATE - To share clean, well-kept house in Mastic, 10 min to Lab. Ken, Ext. 2442; Al, Ext. 2726.

GOOD HOME - For little white pup, answers to "Snoopy" & looks just like him, housebroken & loved. Ext. 2808.

SURFBOARD - Need not be in perfect cond, suitable for 16 yr old. Under \$50. J. Baranosky, Ext. 668.

GRANDFATHER CLOCK - & roll top desk. P. Vosganian, Ext. 2430.

SHOP MANUAL - For Volvo 122S, ca 66. Rakowsky, Ext. 7463.

Carpools

4 MAN CARPOOL - Needs 2 drivers to compl from Wantagh area. N. Schumburg, Ext. 2579.

EAST ISLIP - 1 or 2 additional drivers wanted for current 3 man carpool. S. Aronson, Ext. 2711.

PAYING RIDER - Needs ride from Lake Grove area (Windmill Farms), 2 days a wk. J. Elias, Ext. 2886.

NEED TRANSPORTATION - To & from Wading River on 4 p.m. till midnight shift. Paying rider. Ext. 2245.

PAYING RIDER - Needs ride from E. Northport area 3 days per week temporarily. Rich, Ext. 2735.

HARBOR HILLS, PORT JEFFERSON - Need 1 driver front Harbor Hills area to compl a pick-up on-time 5 man carpool. P. Klotz, Ext. 7778.

BRENTWOOD - North or Hauppauge, via L.I. Expressway, flexibility desired. Rakowsky, Ext. 7463.

Swimming Pool Schedule

Season: October '67 - June '68

Tuesday, Wednesday, Thursday,
Friday 5:15 p.m. - 10:00 p.m.

Daily Admission

Employee or Family Member	\$.35
Guest	.60

Season Tickets - Oct. 25 to Mid-June
(On Sale at the Pool Office)

Employee or Family Member	\$ 5.00
Family ticket	10.00

Bathing caps, ear plugs, nose clips, combs, and towels are available for purchase.

Classified Ad Policy:

1. The Bulletin Board's classified section may be used only by active and retired Laboratory employees.
2. All items for sale or rent must be the advertiser's property.
3. Persons listing houses, apartments, or rooms for sale or rent, do so with the understanding that these must be available without regard to race, creed, color, or national origin.
4. Ads associated with a full- or part-time business cannot be accepted.
5. Ads should be restricted to 20 words or less and typed or

printed on the form provided. (Additional copies of the form are available at the Bulletin Board office.) Twelve noon on Friday is the deadline for inclusion in the following week's issue.

6. Ads are run on a space-available basis; those not carried because of space restrictions will be held for inclusion in the next issue.

7. Ads are run only once and must be resubmitted if they are to be repeated.

- | | | |
|--|---|--|
| <input type="checkbox"/> For Sale: Auto & Auto Supplies | <input type="checkbox"/> For Sale: Houses | <input type="checkbox"/> Carpools |
| <input type="checkbox"/> For Sale: Boats & Marine Supplies | <input type="checkbox"/> For Rent | Check <input checked="" type="checkbox"/> the heading applying to your ad. |
| <input type="checkbox"/> For Sale: Miscellaneous | <input type="checkbox"/> Wanted | Print or type your ad in 20 words or less. |

If this ad concerns housing for sale or rent, such housing is available without regard to race, creed, color, or national origin.

Employee's Signature _____ Life No. _____ Ext. _____

Send to: BULLETIN BOARD, 40 Brookhaven Avenue