

BULLETIN BOARD

Volume 22, Number 38

Published by the BNL Public Relations Office

September 19, 1968

Fifth Cross Section Group Meeting First In New BNL Building

The first meeting to be held in the new Lecture Hall-Cafeteria is the fifth meeting of the Cross Section Evaluation Working Group, which is coordinated by the National Neutron Cross Section Center.

Both the Working Group and the National Center, are chaired by Dr. Sol Pearlstein of the Nuclear Engineering Department. Dr. Pearlstein was named Acting Director of the National Neutron Cross Section Center in September of 1967 when the organization was formed. In August of 1968, he was named Director, and continues to serve as Chairman of the Cross Section Evaluation Working Group.

The Working Group meets every six months to evaluate experimentally-developed cross section data collected during the period between meetings.

Evaluation and publication of the cross section data is useful in the design of nuclear reactors of all types. The collected data is as useful to the reactor designer as a table of decimal equivalents is valuable to a machinist, or a handbook is to an engineer. Accurate knowledge of the cross sections greatly reduces the cost of experimental designs.

The cost of design work on the 61 power reactors presently planned for the next ten years in the United States is greatly influenced by this evaluated data. Cross sections are the measure of the probability or the lack of it of a neutron interacting with a particular nucleus. The tremendous task of gathering and evaluating all of the cross section information available would be extremely expensive for any one private industry to assume. Government compilation and distribution makes the information available to all interested parties, regardless of size.

The Working Group Meeting that concluded yesterday, was attended by over 50 scientists from the United States and Canada, and was devoted to bringing up to date the latest information gathered throughout the year. Meetings were held in the conference rooms adjacent to the Cafeteria, and ran from 9 a.m. to 5 p.m. Dr. Pearlstein was enthusiastic in his comments about the new facility. "Meeting in an air-conditioned room did much to expedite the concluding of our agenda. It was also very convenient to be so near to the cafeteria during our lunch break".

On Monday evening, the group was entertained at the Brookhaven Center for a formal dinner party, after a full day of reports and subcommittee meetings. Tuesday was devoted to special topics and workshop sessions. Wednesday, the last day of the meeting, was devoted to subcommittee reports and future objectives.

Cotzias Lecture Postponed

The lecture by Dr. George C. Cotzias (Medical) scheduled for September 25 has been postponed.

The next regularly scheduled Lecture will be on October 23, with George Collins (Physics) as Lecturer. His topic will be "The Short Distance Frontier."

On November 13 Harold W. Siegelman (Biology) will be the BNL Lecturer and his topic will be "The Bio-Pigments of Plants."

Dr. Cotzias will lecture on "Parkinson's Disease; Relationship to Minors, Metals, and Madness" on December 4.

Cooking Exchange Meeting

The first meeting of the Cooking Exchange will take place on Thursday, September 26. As in the past, the meeting will be at the Apartment Area Recreation Building from 3 to 5 p.m. The first week's theme will be "Tastes from Foreign Lands."

A charge of 50¢ per adult will be collected to pay for the cooking demonstration as well as the babysitters available for the children.

Classes Start At Brookhaven Campus



Waiting outside the Personnel Office for a guide to take them to their quarters are (left to right) Annie Ruth Cornelius, Casandra Jackson and Joe Wathaw. Photos by Humphrey



Annie Cornelius and Casandra Jackson discuss their shortage of casual clothes while unpacking.

Stony Brook Announces Free University Lectures

The State University of New York at Stony Brook has announced a series of University Lectures that will be offered free of charge to the public for the 1968-1969 academic year.

The lectures, delivered for the most part on weekday evenings, will be offered on a non-credit basis and without formal registration.

According to information included in a recently-mailed brochure, University Lectures are based on the idea that the great issues facing contemporary America have their roots deep in the traditions of eastern and western thought. Believing that greater understanding of these traditions will increase comprehension of today's problems and make it possible for an informed citizenry to examine more closely

the conflicts of the twentieth century, Stony Brook has initiated this new series of lectures.

The series will start at 7 p.m. on Thursday, September 19 with Professor Alfred Kazin in the Chemistry Lecture Hall. Professor Kazin's course, "The Great Tradition" will concentrate on Western literary roots going as far back as Homer, Sophocles, Plato, Aristotle and others.

On Mondays in the Physics Lecture Hall Professor Louis Simpson will lecture on Literature of the Twentieth Century. Other lecturers include Leonard Eisenbud, Bently Glass, Thomas Altizer, Herbert Weisinger, and John Thompson.

Further information may be obtained from the Admissions Office of the University.

Cross Section Group Meeting



Joyce Wasson, NED, checks meeting agenda for the Cross Section Evaluation Working Group with Chairman Sol Pearlstein (center) and Henry Honeck, Savannah River Laboratory.

Photo by Rosen

BNL Semester Now Underway

With the arrival of six students and one professor, the Fall Term of the Brookhaven Semester has started. This new project for BNL has been in the planning stages for the past two years, but was not funded and "given the green light" until early July. Isaac Cole, Personnel, has been working closely with Dr. Amos Kennedy of Grambling College and Dr. R.C. Anderson, BNL Office of Scientific Personnel, to assemble the student body.

The six students who are now at BNL came from Tougaloo College in Mississippi; Grambling College in Louisiana; Prairie View A & M and Texas College in Texas. A faculty member from Texas College, Professor William Fingal, will be at BNL for the academic year.

Professor Fingal and the three men students will live in Cavendish House, and the three women students will live in Curie House.

Program Starts Next Week

After a general orientation has been completed this week, a formal program for the students will start with regular class sessions instructed by BNL staff members. Organic Chemistry will be taught by Robert Hoyte of Chemistry. Molecular Biology will be taught by Sanford Lacks of



Students and advisors confer during an orientation session.

Biology. Atomic and Nuclear Physics will be taught by Walter Kane and Samuel Goudsmit of Physics. Statistics will be taught by E. Boyd Osgood of Physics, and Differential Equations by Martin Rosenblum of Instrumentation and Health Physics.

Students will devote morning hours to lab work under the guidance of a research advisor, and will have formal class work three afternoons a week. Two afternoons a week will be left free of class commitments to allow for attendance at conferences and seminars.

Edmond L. Baker of Grambling will be advised by John Cusack of HIRDL, Casandra Jackson of Tougaloo by Sol Pearlstein of NED, Joe Wathaw of Texas by Sanford Lacks of Biology, Arthur Lattany of Prairie View by Robert Hoyte of Chemistry. Gloria Kennedy of Grambling will be advised by Thomas Kitchens of Physics, and Annie Cornelius of Tougaloo by Robert Chrien of Physics.

Professor Fingal will work with Dr. Horton Johnson of Medical.

Staff Enthusiastic

Ike Cole, unofficial "Dean" of the Brookhaven Semester, points out that "Staff enthusiasm has been tremendous. Even though we had to have a crash program to get things started, the instructors have gone all out to make it a workable success." That the BNL staff has done its homework is demonstrated by the amount and variety of texts already procured for the classes which will start next week.

Annie Ruth Cornelius, a senior who is majoring in Math at Tougaloo, arrived at BNL Sunday night with Casandra Jackson. After the spartan three-in-a-room dorms at Tougaloo, she was impressed by the room she has in Curie House. "Now that I am here," she said, "I am sure that I brought all the wrong clothes. I brought too many dress-up things, and not enough casual clothes."

Housekeeping Chores

On Monday night, Cole took the two girls to Whites Department Store, to buy some food for storing in the residence kitchen. The three girls will attempt to do most of their cooking in the residence, and will be able to share some of the cooking chores. This past summer Annie was in a summer program at Brown University, so she is no stranger to northern ways. She was a bit surprised, however, at her first view of BNL. "I expected to see a smaller place, more like a college campus. I thought there would be a town right at the Lab,"

(continued on page 2)

Students Arrive For Brookhaven Semester

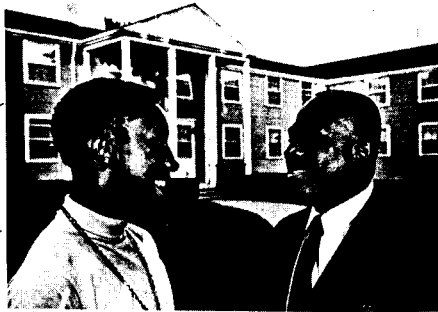


The first contact with BNL for the Brookhaven Semester students was at the Personnel Office with Isaac Cole.

Brookhaven Semester (continued)

she said, "but with a department store right at hand where anything can be bought, I guess we will get along."

Annie lives in Bolton, Mississippi, about 25 miles from Tougaloo College. She has one brother, a year younger than she who is a senior at Jackson State College. During her junior year at Tougaloo, Annie managed to maintain a 4.0 average with three math courses, psychology, and some minor courses.



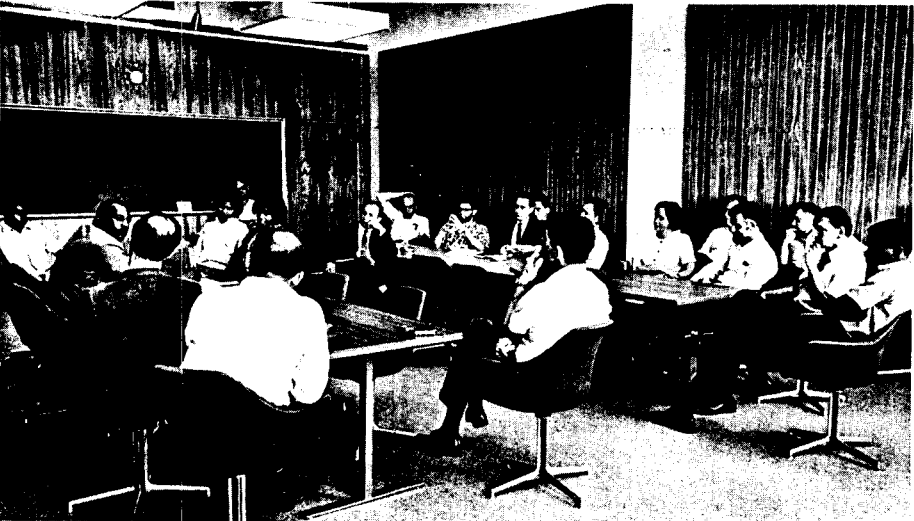
Joe Wathaw (left) and Professor William Fingal talk outside their quarters at Cavendish House.

After graduation from Tougaloo, Annie would like to take her masters degree at Pratt in Brooklyn, Brown University or at University of California. She plans to work in computer sciences or data processing.

The Steering Committee for the Brookhaven Semester consists of Mark Sakitt, Physics; John Cusack, NED; Bob Marr, Applied Math; Sanford Lacks, Biology; and Robert Thomas, Chemistry.



Advisor Jack Cusack talks with Arthur Lattany.



Steering Committee, Instructors and Research Advisors meet with the new students in the Chemistry Conference Room.

Center Schedule Changes

Commencing on Friday, September 27, and continuing until further notice, the Brookhaven Center will be on the following schedule for evening service.

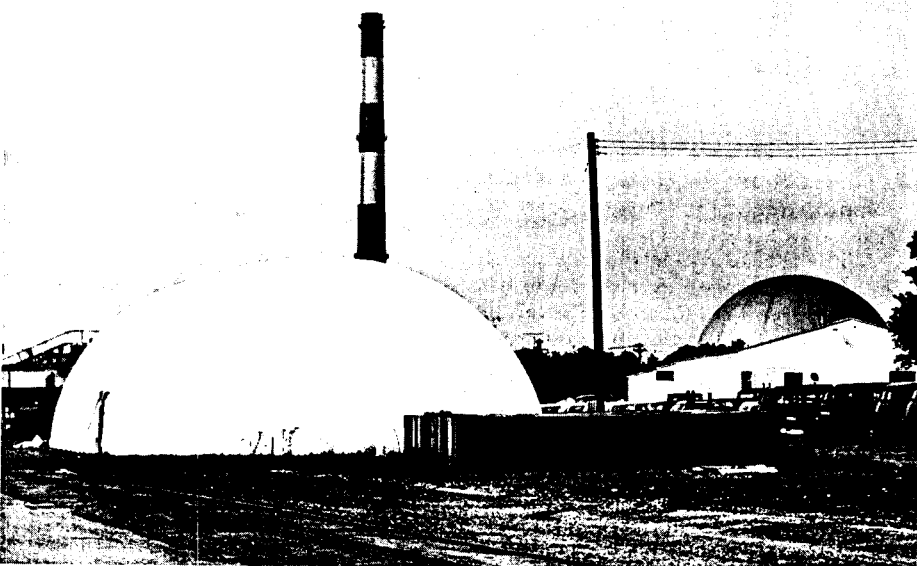
Sunday through Thursday, the Center will be open from 5 p.m. until midnight.

Dinner will be served until 8 p.m. The Tap Room will serve a light menu until 11:30 p.m.

Service will be limited to sandwiches and beverages in the Tap Room on Friday. Saturday the Center will be closed.

Cloth Bubble Protects AGS Steel

9-154-68



The Air Warehouse is made of 22-ounce nylon coated on both sides with vinyl. It is inflated with a three hp blower that runs continuously. Two of these buildings were purchased to protect steel from rusting while waiting for use in the AGS modification. The cost of this building and another similar unit is less than the cost of repainting and rust-proofing the stored steel.

Here and There

Dolores del Castillo

Larry Van Steenberg (Accelerator) has returned to the Laboratory after spending nearly a year at the National Accelerator Laboratory. During this period he led the design effort of the 10 BeV booster synchrotron injector for the 200 BeV accelerator.

George M. Woodwell (Biology) has accepted an invitation to serve as a Congressional Advisor to the Committee on Environmental Quality.

William S. Hillman (Biology) has been elected to the Editorial Board of Plant Physiology for a second term.

Joachim Fischer, R.L. Chase, and V. Radeka (all of I & HP) presented papers at the International Symposium on Nuclear Electronics held in Versailles, France, September 10-13. Messrs. Chase and Radeka also served as rapporteurs.

Alden D Hinckley (Biology) recently presented a paper on "Chemical and radiation sterilization in pest control" at the 13th International Congress of Entomology, held in Moscow, August 2-9.

Willie Higinbotham (NED) has recently returned from Germany where he visited at the Karlsruhe Nuclear Research Institute to observe a safeguards experiment being conducted at a fuel processing plant.

Leon Green (NED) has just returned to the Laboratory after an absence of two years during which time he was with the IAEA in Vienna. He served with the Agency as Senior Officer with the Economic Section of the Nuclear Power and Reactor Division. Participating in many international reactor economics meetings, he also was involved in giving assistance to developing countries interested in entering the nuclear power field.

Dr. Setsuro Kinbara of the Tokai Research Establishment will visit the Laboratory on September 27 for discussions on nuclear electronics and instrumentation.

Jean Pierre L. Boulanger of Saclay will visit the Laboratory, October 1-4, for scanning and measurement discussions.

Service Awards — Sept. 1968

Twenty Year

- Allen, Augustine O.....Chemistry
- Anderson, R. Christian.....Directors
- Bubb, Kenneth.....I. & H.P.
- Hamlyn, Roger U.....S. & M.
- Katcoff, Seymour.....Chemistry
- Manger, Albert.....Central Shops
- Miles, Francis T.....Nuc. Engr.
- Smith, Lyle W.....Accelerator
- Sperry, Edward D. III.....Mech. Engr.

Ten Year

- Biittner, Audrey D.....Physics
- Eisold, Mildred M.....Accelerator
- Flatau, Carl R.....Mech. Engr.
- Green, Frances M.....Medical
- Hansen, Walter G.....Medical
- Harty, Lorraine E.....Staff Svcs.
- Kaiser, Frederick A.....Physics
- Kanuga, Rosemary.....Medical
- Miles, James R.....P.E.P.
- Meyn, Kenneth K.....Tech. Photo.
- Reilly, Raymond F.....P.E.P.
- Schmaeler, Max A.....Medical
- Sullivan, John M.....Accelerator
- Van Dervoort, Teresa I.....Information
- Wagner, Jean I.....Nuc. Engr.
- Williamsen, Mia D.....Medical

BULLETIN BOARD

Published Weekly for the Employees of Brookhaven National Laboratory

CARL R. THIEN, Editor
DOLORES DEL CASTILLO, Editorial Assistant
CLAIRE LAMBERTI, Copy Preparation
40 Brookhaven Ave. Upton, N.Y. 11973
Telephone 516 924-6262 Ext. 7238

NORBERT J. DERNBACH
Public Relations Officer

Letters To The Editor

Dear Sir:

*Thanks for old memories,
Of lunches eaten in pleasure,
When we had more leisure.
Thank you so much.*

*Thanks for old memories,
Of fully eaten lunches,
Not just tiny munches.
Thanks very much.*

*Thanks for new memories,
Of half-eaten steaks,
Heartburn that aches.
Thank you so-o much.*

*Thanks for the cafeteria,
And lunches we'll never see
Because time doth so quickly flee.
Thanx oh-hh so much.*

*Thanks to the people who over abuse lunchtime use.
Why should we lose it, if we don't misuse it?
Thank you verry much!*

Hope?!

Arrivals & Departures

Arrivals

- John E. DePillis.....Appl. Math.
- Geoffrey Davies.....Chemistry
- James W. Edmonds.....Chemistry
- Robert L. Eisner.....Physics
- Werner A. Franke.....Pl. Eng. & Plan.
- Bernard Gatty.....Chemistry
- Patricia L. Johnson.....Nuc. Eng.
- Anita E. Katusha.....Staff Serv.
- F. Michael Kiely.....Chemistry
- Mary Orłowski.....Medical
- Richard B. Schonberg.....Personnel

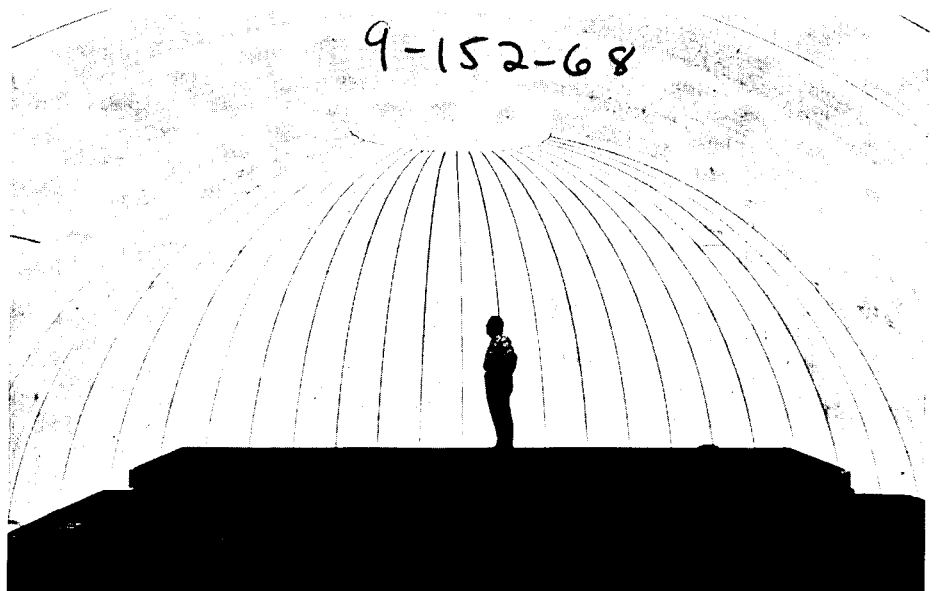
Departures

- William D. Allen.....Instr. & H.P.
- Michael A. Butler.....Instr. & H.P.
- Lai-Him Chan.....Physics
- Lui-Heung Chan.....Chemistry
- Richard N. Chapman.....Nuc. Eng.
- Eduardo de Rafael.....Physics
- Joseph S. Giordano, Jr.....Biology
- Robert P. Guardiano.....Accelerator
- Barbara S. Keck.....Accelerator
- John J. Kruk, Jr.....Pl. Eng. & Plan.
- Patricia A. Mucci.....Physics
- LeAnne Puglielli.....Biology
- Neal R. Roberts.....Reactor
- Richard C. Sautkulis.....Biology
- Lewis M. Schiffer.....Medical
- Haven C. Sweet.....Biology
- Karen E. Warner.....Personnel

Met Opera Tickets

As of noon on Monday there were still a limited number of opera tickets available. They include performances for Adriana Lecouvreur, Simon Boccanegra, Das Rheingold, La Sonnambula, Faust, Die Frau ohne Schatten, Ill Travatore, Peter Grimes, Die Meistersinger and Rigoletto.

9-152-68



Liaison Engineer Bob Stafford of the Accelerator Department stands on steel slabs stored in the inflatable building on Railroad Avenue. The 50 by 100 foot building is held up by air pressures of about one ounce per square inch. The structure will withstand winds of more than 60 miles per hour and can be inflated in about 15 minutes.

Photos by Humphrey

Dollars and Sense

Leon Meshel

Student Dependents by Frank Bloom

With September here again, many BNL employees' sons and daughters are returning to school. Those attending college often have had part-time employment (summer jobs, etc.) during the year to help defray the rising cost of higher education. In many cases their earnings exceed \$600 per year, and a question arises as to their dependent status on their parents' tax returns. The \$600 gross income test for eligibility as a dependent need not be met in the following situations: 1) a child under 19 years of age at the close of the calendar year; 2) a child who is a "full-time" student at an "educational institution". In these particular circumstances, the income tax law permits a "dual" exemption. One on the parents' return and one on the return the child himself must file.

The definition of "full-time" student generally means a student who, during 5 calendar months of the calendar year (about 1 semester), was pursuing a full-time course of education at an "educational institution". The 5 months need not be consecutive, but must be within 1 calendar year. School attendance exclusively at night does not qualify, but, attendance at night in conjunction with full-time studies is permissible.

The definition of an "educational institution" is a school maintaining a regular faculty, an established curriculum, and having a regularly organized student body in attendance.

It's amazing how many parents fail to file a tax return for the student in order to get a refund of the tax withheld. Many people confuse the legal requirement for filing a tax return (\$600 or more of gross earnings) with the practicality of getting a refund.

300 BeV Project Gets German Nod

The Federal Republic of Germany has indicated its willingness to participate in the building of a 300-BeV accelerator by the European Organization for Nuclear Research.

Germany's approval brings to five the number of countries that have expressed their willingness to participate in the project. Of the major powers, only Britain has given a negative decision. The approval of Germany, the largest contributor with a 23% share, is expected to lead to the approval of the remaining seven members.

The loss of Britain, the second largest contributor with a \$90 million share, was a blow to the project, and has caused a scaling down of the scope of the program.

CERN is presently operating the third largest accelerator, the 30-BeV machine at Meyrin. Brookhaven's 33 BeV AGS was the world's most powerful accelerator until Russia's 76 BeV machine was started up in October of 1967. The number one spot will again be held by the United States when the 200-BeV accelerator is completed in Weston, Illinois.

USNR Research Co. 3-9

Brookhaven National Laboratory

Upton, New York YA 4-6262, Ext. 2910
Drill Schedule

- For Quarter Ending December 31, 1968
- 9 October
- Poisonous and Venomous Marine Animals*
- Dr. Vincent R. Ligouri
- Osborn Laboratories of Marine Science
- 16 October
- Air Force Systems Command*
- Capt. Kristner, USAF
- Andrews Air Force Base
- 13 November
- Iron Deposits and Well-fouling Problems*
- John J. Hennessy
- Plant Engr. & Plan., BNL
- 20 November
- Applications of Lasers in Meteorology*
- Robert M. Brown
- I & HP, BNL
- 4 December
- Thermal Applications of Radioisotopes*
- Herbert Pennington
- N.Y. Office, AEC
- 11 December
- Health Physics Personnel Monitoring*
- Leigh Phillips
- I & HP, BNL

To See Or Not To See

The BERA Movie Committee is a service group which is interested in showing movies that a large number of potential viewers will attend and enjoy. We want to know what the preferences of Brookhaven employees are and would appreciate hearing from you.

Since winter is approaching and since, therefore, we will show only one or two movies each month, we wonder whether you would like to see an extended program consisting of a double feature or a main feature and shorts, where the total viewing time would be closer to 2½-3 hours rather than the present 2+ hours.

Or would you prefer a shorter program of just one main feature, or a short main feature and a short subject, as we are showing now?

Please send any correspondence to Vicki Levis, Bldg. 510A, or see one of the other committee members. Some of the members are Bill Vogel, ext. 2580; Howard Ogle, ext. 2845; John Binnington, ext. 2294; Norb Dernbach, ext. 435; Josh Kopp, ext. 7268; Barbara Michelson, ext. 2543; Dennis Puleston, ext. 2329; and Morris Strongson, ext. 2727. V.L.

BERA Movie Schedule

September 26	Shane
October 3	Ashes and Diamonds
October 10	The Horse's Mouth
October 17	Jules and Jim
October 24	Ninotchka
October 31	No Movie - Halloween
November 7	Yesterday, Today, & Tomorrow
November 14	No Movie
November 21	Casablanca

Watch the Bulletin Board for further information and details of all movies.

BERA Film Series

Thursday, Sept. 26 - 8:00 p.m. - Lecture Hall

Shane

Directed by George Stevens, *Shane* relates both sides of the conflict between the homesteaders and the cattle ranchers in Wyoming at the turn of the century. Alan Ladd portrays Shane, a roving gunfighter who is befriended by homesteader Joe Starrett (Van Heflin) and helps him in his time of need - when the cattle ranchers hire a gunman to kill a homesteader in the hopes of scaring the rest of the homesteaders off the cattle land. Starrett sets out to kill the hired gunman but is prevented from doing so by Shane, who himself kills the hired gunman and his boss. Then Shane moves on.

Shane is the first Western in which death is not treated so lightly; the burial scene is presented in detail. That the cattle ranchers are not portrayed as mean and villainous men deserves special mention, for they were not ever driven by spiteful motives to drive the homesteaders out of the cattle ranching area - their way of living was merely different.

Shane is suitable for both children and adults. V. Levis

Movie Tonight: Eve Wants to Sleep

Football Notes

by Jack Brennan

Throwing away at least four T.D.'s Applied Math still managed to eke out an overtime one point victory over AGS 27-26 to keep its slate untarnished. Old Timers scored so many times they couldn't keep count of who scored the T.D.'s as they beat Medical 57-25. M. Gottfried scored 3 T.D.'s as the Slow Pokes beat the Kickers 31-6. In a game played earlier in the week, Medical outlasted the Kickers 19-14 as J. Mar to had 3 T.D.'s

	Won	Lost
Applied Math	3	0
Old Timers	2	0
Slow Pokes	2	0
AGS	1	2
Medical	1	2
Mets	0	2
Kickers	0	3

Get Your Football Tickets

Jet football tickets, which were sold to employees in July, have been received and may be picked up at the Recreation Office between nine and one o'clock any day.

It All Happened Last Thursday Eve

In an effort to present an unbiased, unprejudiced report of the ADP-S&M Softball Game, the *Bulletin Board* has decided to give equal time to each side. It is realized that a precedent is being set by doing so, but it is felt that the risks involved are more than offset by the merits of presenting the whole story.

As Told By ADP

Well... the big ADP vs S&M Softball Game finally came about. Both divisions fielded excellent teams, and it was touch and go all the way up to the second inning.

Needless to say, ADP's prior warm up game proved an invaluable aid in an attempt to stem the onrushing force and drive of the S&M players. The fine coordination and skill of the ADP players nearly resulted in a couple of ambulance pickups, and at one point in the game, the right fielder was over in the adjacent ball field anticipating a Mike Guacci hit.



Administrative Data Processing Team

Both managers proved to be excellent additions to the teams with their consistent batting... all outs! In order not to cause any embarrassment, we won't mention the score, but the winners had a 'comfortable' lead of six times the opponents' score. Numerous aching bodies and sore arms concluded the game, and half the winning team had to leave to go to another night game, (which we hear they won also).

Everyone enjoyed themselves, and it turned out to be a fun evening with over 12 pounds of frankfurters being consumed. A good deal of experience was gained, and ADP ventured to say that they had established a sound and practicable base for future endeavors of this sort.

The 'True Facts' As Told By S&M

With determination in their eyes and illusions of grandeur in their minds, 'Kameika's Kinsmen' prepared to engage the power and strength of the feared 'Borzi's Bombers.'

Play started rather slowly and the game was very close going into the top of the third, (ADP-0, S&M-4. Outstanding pitching by Borzi and a flawless defense all but silenced the bats of the Kinsmen until an outstanding error by the left-fielder Guacci opened the door for four runs in the top of the third. The Bombers, under the expert guidance of their manager, J. Scharpeger, were reminded that their



Supply & Materiel Team

heritage and Divisional pride were in jeopardy of embarrassment. They began a relentless and unmerciful bombardment against the valiant but inept efforts of the Kinsmen. As the dust settled and Bombers stopped crossing the plate, the score after three - S&M-12, ADP-4.

With the taste of victory in their mouths, the Bombers rolled over the opposition with ease and confidence. Hits fell like drops of rain in a storm and runs crossed the plate like a pin-ball machine. The Final Score: S&M-36, ADP-6.

Outstanding players for the Bombers were: P. Borzi, T. Nelson, G. Dioguardo, G. Leverock, L. Musso, F. Altrui, R. Mulderig, R. DiLello, and M. Guacci. Out of respect to Mr. Kameika and his Kinsmen, their roster shall remain anonymous.

The *Bulletin Board* hopes this settles the matter of the Bombers and the Kinsmen for 1968, and wonders what wonders 1969 will bring.

Rifle and Pistol Club

Fall Large Bore Shoot - Medford Range, Sunday, September 29 and Sunday, October 5, at 1:00 p.m. Fee for use of the range is \$2.50 per day for non-residents of Brookhaven Town and \$3.00 per season for residents. Ammo is free. Call Frank German, ext. 7204, or Al Lukas, ext. 7769.

The club has entered a pistol team in the Long Island Industrial Rifle & Pistol League. Anyone interested in participating in the activity and holding a New York State pistol permit, please contact Paul Buhl, ext. 354, for details. Shooters are needed who will make an honest effort to attend as many matches as possible.

Round Robin Pistol Shoot

The Sixth Round Robin Pistol Shoot, held Saturday September 14, 1968, continued its tradition of success with 19 competitive marksmen arriving to match their talents. Following are the results of the shoot.

In the .38 cal. individual event, first place Class A went to P. Colsmann with a score of 292; Class B trophy was won by J. Barry with a 284; Class C went to J. Canton with a 273; F. Baumfalk with a 173 won the Class D trophy.

The .22 cal individual event found old reliable J. Mazzeo winning the first place Class A trophy with a fine score of 296; P. Colsmann captured the Class B award by scoring a 293; Class C went to P. Buhl with a 220.

In the .38 cal. two-man team event, P. Colsmann and M. Hughes teamed up to out shoot the other teams by scoring an impressive team total of 580; the Class B award was won by J. Mazzeo and J. Kruk with a team score of 566; M. McAllister and J. Canton teamed up to win the Class C trophy with a team score of 519.

So far this year the Round Robin has awarded 62 trophies. The committee urges all members to compete in our final shoot of the year slated for October 5 at 10:00 a.m.

Parlez-Vous Francais?

A French-speaking group has been formed, with plans to participate in the activities of "L'Alliance Francaise." The Call Josette Auerbach (286-3742) or Paulette Goodman (744-8449).

Swimming Pool Schedule

The swimming pool will be closed for maintenance repairs until mid-October.

Classified Advertisements

Autos & Auto Supplies

- 66 BENELLI - 125 cc, excel cond. \$200. Ext. 318.
- 66 VW CONV - Radio, 26,000 mi, excel cond. Carol, Ext. 7732.
- 65 AUSTIN HEALEY 3000 MK-3 - Late model w/all '66 components, orig, no dents, scratches or repaints, excel, extras. 475-5894.
- 65 (LOTOS) TURNER ROADSTER - Custom silver pearl/blk interior, rare collector's item, runs & looks excel. Asking \$2100. HR3-2821.
- 62 CHEVY IMPALA - 4 dr hdtp, 327 V8 eng, ps, pw, pw seats, good cond. Reasonable. 475-4286 after 5.
- 63 CORVAIR MONZA MOTOR - Good for rebuilt or parts. Make offer. John, Ext. 7233.
- 64 CADILLAC CONV - A-1 cond, fully equipped. Best offer. John, JU8-3669.
- 60 COMET - 4 dr sedan, white, auto trans, r/h, can be seen in north Police parking lot, 8 a.m.-4 p.m. \$125. SH4-2004 after 5.
- 67 MUSTANG - 2+2 V8, 3 spd, r/h, reverb, exterior pack, h.d. suspension, console, extras, excel. \$1950. W. Cahill, Ext. 2478.
- 2 SNOW TIRES - On Dodge rims, 7.0-6.50x13, used 2000 mi, excel cond. Orig cost \$44, asking \$30. John, Ext. 7233.
- 64 VALIANT CONV - Ext. 7481, 2432.
- 63 VW 1500 - Squareback, good cond. Asking \$600. P. Grand, Ext. 2481.
- 58 FORD STATION WAGON - 6 cyl, std trans, body so-so, tires 5000 mi. B. Walton, Ext. 2181.
- 60 MERCURY - V8, std trans, new tires, many extras, 50,000 orig mi. \$300. EM3-6121 after 6.
- 63 FORD COUNTRY SQUIRE WAGON - 9 psgr, ps/pb auto trans, 352 V8, roof rack, good cond. \$795. D. Vail, Ext. 2411, YA4-4058.
- 60 VALIANT - R/h, auto trans, recent valve job, good tires, good mechanically, body fair, owner leaving country. \$225. J. Figuera, 281-3430.
- 6 CYL CHEVY ENG - Fits '55, '56, '57 Chevy. \$50. 281-5289.

62 CORVAIR MONZA - 4 dr, green, leaving country 9/25, must sell, preferably 9/24 or 9/25. \$250. R. Welsh, Ext. 2919.

66 FAIRLANE 500 XL - B/s, ps/pb, 4 new tires, radio, reverb & 2 speakers, console, excel cond. Hodge, Ext. 574, JU8-7211.

64 FALCON WAGON - 6 cyl, r/h, excel cond throughout, orig owner, buying larger car. \$675. D. Crennell, Ext. 7324.

CUSTOM MADE CAMPER - On Ford Econoline, self contained, sleeps 4, ideal for hunting - camping, must be seen. Asking \$1700. HR3-2821 days, Ext. 7642 nights.

61 MERCEDES 180 - 4 dr, good cond. Make offer. Ext. 360, 878-1821 after 6.

67 OLDS F85 - 4 dr, ps/pb, auto trans, 12,000 mi, 2 snow tires on rims, excel cond. 475-9047.

64 CHEVY IMPALA SUPER SPORT - 283 V8, new powerglide by Lee Miles, 4 new tires, shocks, low mileage, stereo tape. \$1200. Frank, SH4-9033 after 6.

67 CAMARO - 427, 435 hp, headers, Hurst 4 spd, 4.88 rear, blue/blk vinyl top, never raced. \$3100. Nicky, AT6-8388.

65 VW - Red, sedan, excel cond, extras, must leave country. \$825. 281-7814.

64 FORD GALAXIE 500 - 2 dr htdp, 289 c.i., std trans, good tires, excel cond. \$800. Chuck, Ext. 388, 286-3764 after 6.

SNOW TIRES - 2 size 7.75x14 on Ford rims, Atlas w/w, used 5 mos. \$30. Chuck, Ext. 388, 286-3764 after 6.

64 DODGE DART - 2 dr, 6 cyl, std trans, a most economical car w/many extras, excel cond. \$675. Marcia, Ext. 2380.

65 VW - White, in excel cond, low mileage, must sell. K. Scheibe, Ext. 7456.

63 PONTIAC WAGON - 6 psgr, auto trans, 2 new tires, am/fm radio, pwr rear window, excel cond. 273-7816.

66 TEMPEST CUSTOM STATION WAGON - 326 cu in V8, 4 dr, r/h, ps/pb, luggage rack, new tires, immaculate. \$1800. Ext. 379.

66 DODGE MONACO 500 - 2 dr htdp, vinyl roof, full pwr, auto trans, bckt seats, console, other extras, low mileage, excel cond. 286-3829.

66 MERCURY COMET - Auto trans, 2 dr coupe, low mileage, good body & running cond. Inal, Ext. 2851.

60 DESOTO - Ps/pb, r/h, 4 new tires, new battery, very good cond. \$300. Ext. 7688.

64 SUNBEAM ALPINE - Hank, Ext. 7121.

426 RAMCHARGER MARK III - Competition eng, heads, crank, cam & valves, professionally reworked, well over 500 hp. AT6-9197 after 5.

64 RAMBLER CLASSIC - 4 dr sedan, auto trans, good running cond, ps. H. Montgomery, 472-0070.

53 DODGE - R/h, gyromatic trans. \$50. G. Campbell, AT6-3675.

MORRIS MINOR 1000 CONV - Nardi, Ext. 7243, AT9-3596.

63 FORD - 2 dr, V8, auto trans, ps, new gen, reg & muffler. \$425. Bob, Ext. 7319, 475-7470.

63 BUICK STATION WAGON - V8, auto trans, good rubber, very good cond. Asking \$750. 286-3506.

62 COMET - 2 dr, 6 cyl, std trans, reliable. \$200 or best offer. Bob, Ext. 2598.

JAGUAR XK-120 - Freshly rebuilt 3.8 eng, set for D Prod racing, can be converted to street machine, trailer incl. \$1300. Ext. 2315, 878-1738.

62 CHEVROLET PICKUP TRUCK - & camper, 6 ply tires, helper springs. \$1150. Ext. 2315, 878-1738.

63 RAMBLER AMERICAN STATION WAGON - 6 cyl, std trans, new clutch & muffler, excel buy at \$395. J. Simone, Ext. 406, 286-0906 after 6.

62 FORD RANCH WAGON - V8, auto trans, new tires, new battery, avail early Oct. \$500. Tippe, Ext. 2241, 281-7611.

HONDA - 50 cc, very good cond, 200 mpg, helmet, face shield. Best offer. J. Shreeve, 286-8807.

63 FORD FALCON - 2 dr, 6 cyl, auto trans, excel cond. Ext. 423.

55 BUICK SPECIAL - V8, new tires, new battery, in good running cond. \$100 firm. AT6-8718.

58 RAMBLER - In running cond, new brakes. \$75. Andy, Ext. 2516.

59 CHEVY BISCAYNE - 2 dr, auto trans, 6 cyl, new eng, trans, brakes, good tires, excel mech cond, body fair. \$200. T. Sweda, GR5-7227.

60 CHEVROLET STATION WAGON - Good tires, std trans, works well. \$150. D. Barge, Ext. 2510, SH4-2798.

61 TRIUMPH HERALD SEDAN - Radio, new battery, 4 w/w, snow tire, body clean. V. Levis, Ext. 2341.

Boats & Marine Supplies

14' PEN YAN RUNABOUT - Reasonable price. Torre, Ext. 423.

ALCORT SUNFISH - Excel cond, w/dolly. \$375. Kahane, Ext. 2810, 744-6636.

27' CHRIS CRAFT CRUISER - 185 hp eng, approx 150 hrs, s/s, fully equipped, excel cond. Asking \$3300. L. Emma, Ext. 642.

BLUE JAY SAILBOAT - Needs some paint & varnish. First \$350 takes. LT9-1342.

24' CHRIS CRAFT EXPRESS CRUISER - 130 hp, sleeps 2, head, sink, equipped. \$1200. Ext. 7373, MO1-6078.

18' CABIN CRUISER - 2 bunks, head, extras, 40 hp Johnson elec, mooring anchor incl. \$700. JU5-8322.

21' TYLERCRAFT FIBERGLASS SLOOP - Sleeps 4, sink, head, Genoa gear, working sails & Genoa, 5½ hp Johnson, extras. \$2600. J. Weiss, Ext. 2472.

20' CABIN CRUISER - 95 hp f/w cooled, used 2 seasons, extras. \$2500. Petruk, AT6-0124.

14' WOODEN ROWBOAT - & 10 hp Evinrude motor, good cond, free demonstration. \$150. GR5-4557 after 5.

14' SCOTCHCRAFT RUNABOUT - 1958 35 hp Evinrude, steering, controls, windshield, cushions, tank, lights, good cond. \$225. GR5-0002.

12' MFG RUNABOUT - 40 hp Evinrude, Cox trailer, many extras. \$600. AT6-8718.

Miscellaneous

PORTOR CABLE 8" ELEC HAND SAW - W/case & extra blades, very good cond. \$30. Watson, Ext. 2381.

2 FORMICA TOP END TABLES - 1 coffee table, 1 round picture window table, blond oak finish, excel cond. \$50. 289-1748.

RIDING LAWN MOWER - 24" rotary, simplicity "Wonder Boy", 4½ hp Clinton cast iron eng. \$60. C. Klamut, Ext. 549.

BILTRITE STROLLER - Full size, hood & windbreaker. \$13. N. Azzarito, Ext. 586, SE2-6114.

SEARS IRONER - Clothes holder attached. \$20. N. Azzarito, Ext. 586, SE2-6114.

ST. BERNARD - Male, 11 mos, AKC, all shots, housebroken, must sell, moving into apt. Bill, 878-2879.

SM PANASONIC TV - Almost new, beautiful picture, all transistor. Ann, Ext. 590, GR5-2306 after 5:30.

MARINE CONVERTER - Gonset 12V. \$15. Ext. 7166.

KENMORE PORTABLE DISHWASHER - Old but works. No reasonable offer refused. Ext. 2235.

ZENITH TV - Old, needs work, light wood cabinet in perfect cond. No reasonable offer refused. Ext. 2235.

STARTER GOLF CLUBS - 1,3 Woods; 4,5,7,9 Irons, w/putter & bag. \$15. Ext. 318.

BKLYN POLY EE751 TEXT - Classical Electrodynamics by Jackson. Cost \$11.50 asking \$5. J. Curtiss, Ext. 371.

BABY CARRIAGE - Biltrite, converts to car bed, blue & white, like new. E. Bihn, Ext. 7631.

STEREO TURNTABLE & SPEAKERS - Model 3000 Columbia-Garrard, built in amplifier, beautiful wood stained cabinets. \$115. Ext. 574, JU8-7211.

FM TRANSISTOR RADIO - Excel, \$50 or best offer; 2-20" Schwinn front wheels, \$10 ea or \$18 for both. Andrew, AT6-8835.

MAN'S SHOES - Size 7, lt brown, imported, all leather. \$10. Ext. 7720.

WOMAN'S OTTER COAT - Imported, size 12, used, in very good cond. Ext. 7720.

TRUMPET - Made in France, Good condition, plays well. With case \$45. Barnes, Ext. 2393.

GIUITAR - Harmony "Classical", excel cond. Less than one year old. Gut or nylon strings only, \$45. 878-1975.

RADIO - Philco am/fm, 3 short wave & 1 long wave band, 2 yrs old. \$40. Hodge, Ext. 574, JU8-7211.

WINTER'S COMING - Pile of split oak 8'x4' high. Best offer. 286-3829.

ACCORDION - 120 bass, Italian made w/case, excel cond. \$50. Ext. 457.

POLAROID 210 CAMERA - Flash attachment, carrying case, new cond, unused film. \$35. 924-4063 after 6.

ALUMINUM S/S DOOR - Fits 32½"x80" opening, left hinged, 2 screens, 2 glass inserts, all hardware. \$8. W. Dunnigan, Ext. 7677.

NATIONAL MONTEREY TENT - Almost new, 8'9" x8'9", nylon screened door & windows, steel stakes, center pole, HT 7' center, 5'6" walls. \$30. Mike, Ext. 7174.

LADIES BOWLING BALL - 16 lb, w/bag, \$10; child's car seat, \$5; rocking horse, needs minor repair, \$10; grille w/rostiteries & hood, \$8; 4' child's pool, \$2; Bb clarinet, \$10. Mike, Ext. 7174.

BABY CARRIAGE - Lt blue, "Built-Rite", excel cond, car bed free w/carriage. \$35. G. Lanzarotta, Ext. 2207.

TUBE & TRANSISTOR TESTER - EICO, dynamic conductance. Orig \$109, make offer. E. Bihn, Ext. 7631.

MARINE CONVERTER - For car or boat, Gonset model 3163, 12V. \$15. Ext. 7166.

HW HEATER - Rheems glass lined, LP-gas, 30 gal, new, still in crate. \$60. Torre, Ext. 423.

TRAILER - 4¾"x18' flat bed, used as boat trailer. Asking \$100. J. Weiss, Ext. 2472.

4' OXEN YOKE - Very good cond, 1 bow split but not broken. \$50. Bobbie, Ext. 2179.

SURFBOARD - 9'2" Gordon-Smith, custom model, skip fry, no dings, excel cond, used 3 times, plus car rack. \$90. B. Johnson, Ext. 573.

LAWN MOWER - Sears 18" reel, like new, next year's special this year. \$45. Petruk, Ext. 2142.

STAMP COLLECTION - 90% stamps are mint - N.H., in 4 Linder "hingeless albums", "plus new issues to date". Dick, Ext. 7343.

9'7" SURFBOARD - Well balanced, quick turning ability, good cond, used only 1 season. \$50. Ext. 7343.

ITALIAN PROVINCIAL DIN RM SET - Odd liv rm pieces; 8 piece white provincial bed rm set. 363-6532 after 6.

BABY CARRIAGE - Car seat; stove. Mrs. Kalbfleisch, 744-5741.

NORGE WASHING MACHINE - 2 spds, 2 cycles, 3 water temp, excel cond. \$45. Diamond, 473-2473.

OLYMPIA PORTABLE TYPEWRITER - German, excel cond. \$35. O'Neall, Ext. 7793.

DEWALT RADIAL ARM SAW - Good cond, \$50; White console sewing machine, \$50; cherrywood harvest table, formica top. \$50. 286-1373.

APT SIZE WASHING MACHINE - Sears "Best", used 1 yr, idle 1 yr. \$75. Lauber, 472-0690.

RCA WHIRLPOOL WASHING MACHINE - Good running cond, \$20; Crosley TV, 17", good working cond, \$20. J. Figuera, 281-3430.

TWIN BEDS - Spring box, spring mattress, very good cond. \$40 both. J. Figuera, 281-3430.

26" BOY'S BICYCLE - Med weight, all chrome, Sears Flight Liner, need tires & pedals. \$10. Artie, Ext. 434.

FM TUNER & SPEAKER - \$12. Ext. 7166.

RELAX-A-CIZOR - Battery operated transistor model. Claire, Ext. 2312.

WATER PUMP - Deep well Peerless Jet, ½ hp motor, excel cond. \$25 or will swap for shallow well pump same cond. Ext. 423.

CORNER LOT IN YAPHANK - Approx ¼ acre, wooded, 2½ mi from Lab. \$3500. R. Buteau, AT6-9262.

POODLES - AKC reg, blk miniature, 3 females, 8 wks old. \$75 ea. AT6-0004.

BLOND CRIB & MATTRESS - \$15; bird cage, stand & cover, \$5. J. Richter, Ext. 7196, 286-3739.

CRIB W/MATTRESS - \$5; slicer, \$3. Bob, Ext. 2389, 475-5863.

Houses

PATCHOGUE - 3 bedrm ranch, att garage, full basement, oversized dble detached garage, lg landscaped corner lot, many extras. W. Homer, Ext. 309, GR5-4597.

FLAT ROOF RANCH HOUSE - 3 bedrms, 8 mi from Lab. 878-1964.

CALVERTON - 10'x60' Expando, Kropf mobile home, property 200' from Lake. 727-0136 after 5:30.

BAY SHORE - Year round bungalow, property 75' x275'. \$7500. JU1-5786 after 6.

RIDGE - 3 bedrm ranch, eat-in kitchen, din rm, s/s, full basement. 924-6860.

SHIRLEY - 3 bedrms, 2 baths, lg rec rm, garage, breakfast bar, w/w carpet in liv rm, etc, must sell. Abate, Ext. 7504, 281-4528 eves.

BELLPORT - 6 rm ranch, 3 bedrms, fully landscaped, swimming pool, screened in greenhouse, 6' fence around backyard, 4 yrs old. \$23,900. AT6-9304.

SHOREHAM - 3 bedrm ranch, 2½ baths, fam rm w/fireplace, full basement, garage, wooded lot, beach rights, good mort. 744-2970.

E. PATCHOGUE - 2 bedrms, mahog panelled liv rm & din rm, mod kitchen, garage, ideal retirement home. \$12,500 or \$5,200 & take over mort. E. Hodges, Ext. 381, 583-5465 after 7.

SELDEN NORTH - 8 rm colonial, 2 yrs young, 4 bedrms, 1½ baths, basement, fully landscaped, fenced. \$19,500, take over 6% mort. Ext. 7684, 732-7649.

BELLPORT - 3 bedrm ranch, light airy rms, lg liv rm, modern eat-in kitchen, full basement, oversized att garage, lovely woodd ½ acre. \$17,800. AT6-8724.

PT JEFF STATION - 2 story, 3 bedrm home, lg kitchen, din & liv rm, w/separate 2 car garage & shop bldg, lg trees on property, lot 100x125. AT9-1748.

CENTEREACH - Colonial split, 7½ rms, 1½ baths. \$4000 takes over \$12,800 6% mort, payment \$142/mo. E. Alacca, Ext. 2192.

WADING RIVER - 2 bedrms, 1½ baths, din rm, liv rm, porch, separate rentable apt in house, nice garden, 2 acres lot. \$28,000. 929-6083 weekends only.

SHOREHAM - 3 yr old colonial, take over 5½% mort or FHA, 3 bedrms, 2½ baths, fam rm w/fireplace, 2 car garage, full basement, ¼ acre, extras, beach rights. Ext. 7174, 744-5458.

BLUE POINT - 2 bedrm colonial, waterfront, bulk-headed, lg plot, colonial pine finished, fireplace, 2 baths, w/w carpet, fire alarm system, lg garage, many extras. Ext. 2304.

PATCHOGUE - 2 bedrm ranch, att garage, 75x130 plot, full basement w/fireplace, h/w heat. \$16,400. 924-6172 after 5:30.

PATCHOGUE - 3 bedrms, close to Village, on 80x200 plot, low taxes, inexpensive to heat, lovely home in ideal location. B. Howe, Ext. 2124, GR5-7599.

SHOREHAM - 1 yr old colonial, 3 bedrms, din rm, rec rm, 1½ baths, full basement, ½ acre wooded, garage, beach rights, 6% mort, excel value. \$22,500. 744-8388.

For Rent

TREE HOUSE - Suitable for 1, 10 min to Lab, you decorate, beautiful. \$87.50. 334-1162 after 6.

2 BEDRM FURN APT - Garden, Moriches, avail 10/1. \$100/mo incl all util. 878-1104.

ROCKY POINT - Furn house, 3 bedrms, liv rm, dinette, kitchen, 1½ baths, 9/15/68-6/15/69. YA4-3082.

DELUX BAY VIEW APT - 2 bedrms, 1½ baths, convenient for shopping & school, take over 1 yr lease, avail 10/1/68. Ext. 2942, 475-0647.

2 BEDRM FURN HOUSE - Patchogue, convenient to all locations. GR5-7405.

HIGH WALL TENT - Try brisk fall weather camping for fun & health. 273-6436.

Wanted

HOME - Poodle-mix, small, blk female, housebroken, has all shots, young & playful. M. Barton, AT9-0886.

HOMES - For 3 male kittens, 5 wks old, 1 orange, 1 brown & white, 1 gray & white. 281-5289.

TYPING - Term papers, etc., to do at home. Claire, Ext. 2131, 281-9034 after 5:30.

DIMES, QUARTERS, HALF-DOLLARS - Dated 1964 or before, any quantity, any condition. Will pay 8% over face value. Belfiore, Ext. 7294.

HARDTOP - For 1967 Sunbeam Alpine. F. Bloom, Ext. 7483.

WOMAN TO DO IRONING IN OWN HOME - Cohn Ext. 2891.

HELP - Save us from the cat pound! 5 kittens, 2½ mos, part Persian, 2 blk, 2 gray, 1 tabby. J. Weeks, Ext. 346, 751-1149.

RIDE - To Chicago, Sept 23 or 24, share expenses. Chuck, Ext. 388, 286-3764 after 6.

14" WHEEL RIMS (2) - Must fit 1963 Rambler. Ext. 7465, AN5-6766.

ECONOMICAL CAR - In trade for 25 hp Mercury outboard motor & acces, excel cond. Value \$300. 286-3829.

VOLUNTEERS - For year-round Head Start program, Mastic Beach, mothers w/pre-schoolers welcome. Mrs. Chase, 878-2524.

SCUBA DIVING INSTRUCTION - & advice on underwater gear wanted by several amateurs. Lloyd, Ext. 388.

PARTIES INTERESTED - In Studying violin, viola, recorder (soprano, soprano, alto, tenor, base). G. Holm, Ext. 7203, 924-4261.

TUTORS - For Bellport Community Action Center, Tues & Thurs nights, beginning 9/24, all levels, all subjects. N. Stewart, SH4-6427.

BABYSITTER - For 4 yr old girl, attends BNL Nursery School Mon, Tues, Wed, 12-2 p.m., also 8:30-9 a.m. Ext. 464, 732-8202 after 3.

Carpools

CARPOOL WANTED - Deer Park vicinity. P. McHugh, Ext. 7164.

CARPOOL WANTED - Pt Jefferson. D. Diamond, Ext. 7411, 473-2473.

PAYING RIDER - Needs ride to & from Patchogue train station 8-5. A. Neber, Ext. 493.

PAYING RIDER - Needs ride MWF from Smithtown Blvd, Nesconset. Bob, Ext. 2167, 585-4973.

WOULD LIKE TO JOIN - Carpool from Pt. Jeff. Dick, Ext. 2108, 2305.

PAYING RIDER - Needs ride from N. Patchogue-Medford area. Naomi, Ext. 2919.

CARPOOL WANTED - 860 N. Ocean Ave., Patchogue will pay. T. Smutko, Ext. 322.

Lost & Found

FOUND - Fountain pen, Lewis Rd & Center St. 9/9. Lori, Ext. 7600.

Classified Ad Policy

Deadline is 12 noon Friday for publication the following Thursday.

- 1. The Bulletin Board's classified section may be used only by active and retired Laboratory employees.
- 2. All items for sale or rent must be the advertiser's property.
- 3. Persons listing houses, apartments, or rooms for sale or rent, do so with the understanding that these must be available without regard to race, creed, color, or national origin.
- 4. Ads for material acquired for resale in association with a full or part-time business cannot be accepted.
- 5. Ads should be restricted to 20 words or less and typed

- or printed on the form provided, and must bear the employees signature.
- 6. Ads not carried because of space restrictions will be held for publication in the next issue.
- 7. Ads are run only once and must be resubmitted if they are to be repeated.
- 8. Firearms offered for sale or trade may not be brought on site.

- For Sale: Auto & Auto Supplies
- For Sale: Boats & Marine Supplies
- For Sale: Miscellaneous

- For Sale: Houses
- For Rent
- Wanted

- Carpools
- Check the heading applying to your ad.
- Print or type your ad in 20 words or less.

(Name & Phone No. To Call)

If this ad concerns housing for sale or rent, such housing is available without regard to race, creed, color, or national origin.
Employee's Signature..... Life No..... Ext.....
Send to: BULLETIN BOARD, 40 Brookhaven Avenue