



Digging Out After The Storm



Bulldozer working at the corner of Brookhaven Avenue and Upton Road works amidst blowing snow early on Monday morning. Photo by Humphrey

81st BNL Lecture On Extrapolations

Dr. George A. Baker, Jr. of the Applied Mathematics Department will deliver the 81st BNL Lecture on Wednesday, February 19, in Berkner Hall at 8:30 p.m.

Dr. Baker will talk about representing some extrapolation problems mathematically and procedures to give accurate extrapolations. The title of his talk is "Accurate Long Range Extrapolations - Padé Approximants."

There are many kinds of extrapolation problems. For example, one may stare out of one's window at a half-heartedly plowed street and try to figure out not only whether one can make it in to work, but if the parking lot will have been cleared of snow after one arrives. The idea of an extrapolation problem is to try to give accurate information about something a distance away, from careful observations of it near at hand. The extrapolation problem can frequently be a difficult one. For example, consider detailed weather forecasting. We are all familiar with the fact that although the weather forecasts are often reasonably accurate, an unexpected storm of significant size can occasionally slip past the forecasters and produce a memorable forecasting failure. In weather forecasting, the weather at a future time is extrapolated from the presently observed weather. Another example of a time-dependent extrapolation problem comes from economics, sometimes called "the dismal science". Here the economist attempts to tell the future course of the economy. This sort of forecasting also affects us all. Should we save money for hard times to come, or should we spend our money before inflation makes it worthless?

Dr. Baker was born in Illinois in 1932. He graduated with honors from the California Institute of Technology in 1954. In 1956, he received his Ph.D. in Theoretical Physics from the University of California at Berkeley working under Professor R. Karplus. There then followed a year of Post Doctoral study at Columbia University as an NSF fellow. Dr. Baker then worked in the Theoretical Division of the Los Alamos Scientific Laboratory from 1957 to 1966. During this time, he spent a year visiting the University of California at La Jolla (1961-62) and a year as a Visiting Professor of Theoretical Physics at King's College, University of London (1964-65). Dr. Baker joined the staff of Brookhaven National Laboratory in 1966.

French Group Of BNL

The next meeting of the French Group will take place Wednesday, February 26, at 8:30 p.m. at the Cafeteria-Conference Center. The evening will feature a film program followed by discussion. Details will be announced in next week's Bulletin; please mark the date.

Medical Team Leaves For Marshallese Visit

A team of six scientists and technicians is leaving this week for a six-week visit to the Marshall Islands as part of a continuing study of people accidentally exposed to fallout during a 1954 Pacific atom bomb test.

The team, led by Dr. Robert Conard, will consist of Dr. John Bateman, who will do lens opacity tests; Dr. Charles Demoise, who will examine blood cultures; and technicians William Scott, Douglas Clareus and Michael Makar. They will be joined by Dr. W.W. Sutlow, a pediatrician from Anderson Hospital, Houston, Texas, Dr. Brown Dobyns, a thyroid surgeon from Cleveland General Hospital, and five medical people from the Trust Territories.

The interpreter for the group will be Ezra Riklon, a Marshallese who has worked with the team in the past.

The BNL team will take along with them about 24 boxes of medical supplies which will be used during their stay in the islands. First stop for Dr. Conard will be in Maui, Hawaiian Islands where he will examine two brothers, Harry and Elio Boaz, who are attending school there. After boarding an inter-island ship at Majuro, the party will go first to Rongelap, and then to Utrick, Kwajalein and Kili Islands. They will return to Brookhaven sometime near March 24.

HS Students Invited For Science Session

On Tuesday, February 18, Science Youth Day will be celebrated at BNL by a group of about 160 selected Suffolk County high school students. Science Youth Day is held each year in observance of Thomas Alva Edison's birthday, during which all major AEC laboratories participate in a program aimed at stimulating the interest of high school students in careers in science and engineering.

This year the students will be given an in-depth view of applied science. The program will begin at 11 a.m. in Berkner Hall with a welcoming address by Dr. Warren Winsche of the Department of Applied Science. After a general look at applied science by Bernard Manowitz, Radiation Division, Robert Powell, Reactor Division, will deliver a talk on nuclear reactor operations.

In the afternoon the students will visit research facilities including the BGRR, the Chemonuclear Loop, HIRDL, the Hot Lab, and the HFBR.

Classified Ad Deadline

Due to the holiday on Friday, Feb. 21, the deadline for classified ads next week will be Thursday, Feb. 20 at noon.

\$47.8 Million AGS Conversion Project Moves Into Final Construction Stage

After a year of intensive building and site work, the \$47.8 million project for conversion of the AGS is moving into the less spectacular final stages of equipping and finishing the many structures that have been built.

During the past year much progress has been made in construction of the building to house the new 200-MeV linac. The head house, linac tunnel and the connecting units make a complex approximately 700 feet long extending north-west from the AGS ring. The pre-injector building will eventually house two Cockcroft-Walton generators, the control room and service facilities for the linac in a 100x200 foot, three level building.

Attached to this building is a two story, 540 foot long equipment bay running parallel to the linac that will contain electronic equipment as well as service equipment for air and water cooling and a pump room and water cooling tower.

South of the equipment bay, under a shield of reinforced concrete and earth, is the 537 foot long Linac tunnel which will contain the beam line with its nine tanks, air-conditioning equipment and electrical and piping services.

Still to be built is the transport tunnel which will join the Linac tunnel to the AGS ring. This 190-foot structure will be built during a projected five month shutdown of the AGS.

Additional earth shielding has been placed on some sections of the accelerator ring, particularly in the area between the new linac and the south-west experimental area. Inside the ring, buildings to house

the new motor generator set and RF power supply are nearing completion.

The new motor generator set, scheduled for delivery in April, will be twice the size of the present set. Because of its location inside the ring, it will require shorter power cable runs. The RF building will house equipment that is presently in twelve locations inside the AGS ring. Also in this same general area, an addition to the West Target Area is being built.

For sheer bulk, the East Experimental Building takes first honors. 160 feet wide by 350 feet long, it covers an area large enough for a football field. Inside this building is a 40-ton travelling crane spanning the width of the 60 foot high building, used for shifting around experimental equipment and shielding blocks.

One of the first moves at the start of the construction phase for the project was to re-locate sections of Fifth Avenue north of the AGS. This was not the first time that the straight course of the road had to be modified. When the machine was first operated in 1960, Fifth Avenue ran a straight course from Railroad Avenue west to Brookhaven Avenue.

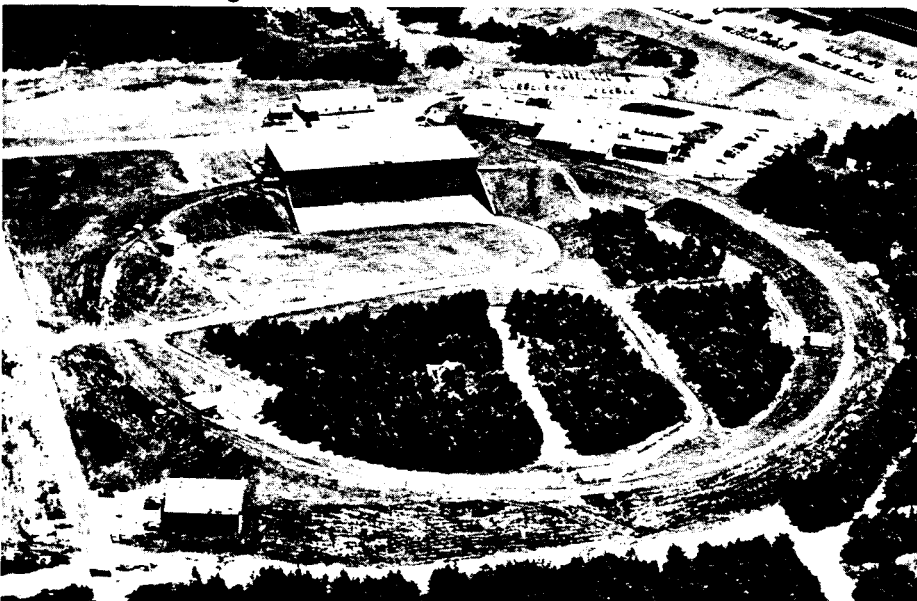
In 1962, when the 80-inch Bubble Chamber construction started, Fifth Ave. was given a jog so that it would run south of the Bubble Chamber buildings. At the start of the present conversion project, another jog was put in the road to the west of the Bubble Chamber to make room for the 200-MeV Linac, and at the same time, the stretch going east from the Bubble Chamber was moved north to make room for the East Experimental Building.

AGS Today



Modification work in progress at the AGS includes: 200 MeV Linac complex (lower right) with earth shielding covering the Linac tunnel to right of the Equipment Bay. Directly above can be seen a section of the AGS ring that has had additional earth shielding placed above it. Inside the ring are the Motor Generator Power Supply building and the RF Power Supply building. At left top is the new East Experimental Building, large enough to cover a football field. Fifth Avenue (from upper left to lower right) has been routed around newly constructed buildings.

AGS Ten Years Ago



This 1959 view of the AGS shows an uninterrupted Fifth Avenue to the left. The inside of the AGS ring is relatively clear except for access roads, and auxiliary buildings are limited in number.

Conference Opening Delayed By Weather

Opening of the IAEA Panel Meeting scheduled to start at BNL on Monday was delayed by Sunday's snowstorm.

The storm started with rain at 2 a.m. on Sunday, and changed to snow by 7 a.m. By 9:30 a.m. enough snow had fallen for a



Shovels are still used for the finer cleaning of doorways and entrances to buildings as is demonstrated by Joseph Murray of Plant E & P.

crew of men to be called in to start clearing roads. At 9 p.m., while snow continued to fall, another crew was called in to help, and drifts as high as 8 feet were plowed aside to keep roads open. During the storm gusty winds of up to 48 miles per hour kept blowing drifts onto the roads almost as soon as they were cleared.

During the height of the storm on Sunday, Steve Kelly, a driver for Staff Services, left the Lab for the Air Lines terminal in



Steve Kelly

New York City, to pick up participants in the IAEA Panel Meeting scheduled to start Monday morning. Kelly left the city on Monday morning at 8:30 a.m. with seven passengers, and arrived back at BNL at 6 p.m. Monday evening after battling the elements all day.

At several points during Kelly's trip, his passengers helped push the huge "stretch-out" through deep snow, and helped to convince police officials that it was necessary to get to the Lab.

Also on Monday, another driver, Edward O'Beirne, left BNL at 11 a.m. in another stretchout bound for the city to pick up more stranded passengers. He finally called in at 3 p.m. from Syosset after being forced to turn back because of clogged roads.

As of Tuesday afternoon, conference attendees were stranded in Montreal, Canada; Detroit, Washington, and a number of them in New York City. According to one conference official, "things are in such a state that we are now forced to rely on the Long Island Railroad." As of Tuesday afternoon, the 8 a.m. train to Patchogue had not yet arrived.



Snowdrifts at all corners on Lab streets made the going difficult on Monday morning.

A Geiger In The Tank

How do you measure the amount of fuel or propellant left in the tank of a space vehicle operating under zero gravity conditions?

Answer: Put a "Geiger" in your tank - along with a little radioactive krypton gas.

The AEC has developed such a fuel gauge which uses the radioactive isotope krypton-85 to give quick, accurate "Geiger Counter" or radiation meter readings. A small amount of the radioisotope in gaseous form is injected into the propellant tank void. As fuel is consumed, the void volume - known as ullage - increases, resulting in dilution of the krypton concentration. The krypton is monitored continuously by counting the beta-particle radiation. The lower the count, the lower the fuel supply.

The device, built for the AEC by the Power Systems Division of TRW Systems, Redondo Beach, California, weighs less than one pound and conforms to power and weight limitations of spacecraft. Preliminary tests made with a full-scale model of the Apollo Reaction Control System demonstrated that the remaining amount of fuel or propellant could be measured to better than one percent accuracy. The technique is now being evaluated for possible use by the National Aeronautics and Space Administration.

Mini Reactor Might Be Moon-Bound

A system which could provide power for manned orbiting laboratories, for spacecraft which will undertake research from vantage points high above the earth, and for bases on the moon from which astronauts can explore the lunar surface is operating in an AEC laboratory in Santa Susana, California. The core of this reactor is 2 feet high and 9 1/2 inches in diameter, and is capable of generating electrical power ranging from 20 to 75 kilowatts, depending on the power conversion equipment used.

The system was developed under the AEC's SNAP (Systems for Nuclear Atomic Power) Program by the North American Rockwell's Atomic International Division. It is producing 600 thermal kilowatts at 1300°F while being tested in an underground vacuum chamber.

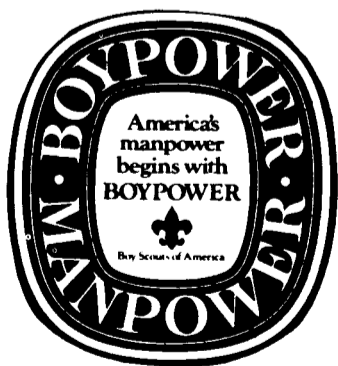
Heat is generated in the core by 211 cylindrical fuel elements containing highly enriched uranium mixed with zirconium hydroxide. A liquid mixture of sodium and potassium is pumped through the core to carry off the heat. Peak temperature is 1300°F.

Designated S8DR, it is the second experimental reactor in the SNAP-8 series. This series extends the SNAP-10A technology which produced the first nuclear space reactor to operate around the earth.

Boy Scouts Honored

This week the Boy Scouts of America are being honored on the 59th anniversary of the founding of this organization in America.

Scouting in Suffolk County has increased almost 15% during 1968, and is



expected to make even further gains during the coming year. Many members of the BNL staff are deeply involved in the scouting movement on all levels as Council and committee members, Cubmasters, Scoutmasters, merit badge counsellors or simply as adult helpers on the various programs.

An 8-year, long-range plan called "Boy-power '76" has been launched to broaden the membership base of the Scouts by making known the availability of the Scout program to all who can accept its commitment of service to God, Country and to other people.

Here and There

Dolores del Castillo

Maria Luisa Calderon, Fidelia De Bonilla, Yolanda Ruiz, Galo Martinez, Jorge Cea and Victor Cader, all from the Jose Simeon Cana Catholic University of El Salvador, visited at the Laboratory on February 6.

An iron meteorite fell on November 14, 1968, in Alandroal, Portugal. A sample was analyzed by **Raymond Stoenner** and **Sydney Thompson** (both of Chemistry) for Cl^{36} , Ar^{37} and Ar^{39} radioactivities. The meteorite was found to have a highly unusual metallic pattern. This crystal structure has been seen before in only one other iron meteorite. The Ar^{37}/Ar^{39} and Cl^{36}/Ar^{39} ratios were significantly different from those observed in other iron meteorites.

Raymond Davis (Chemistry) spoke on "The Search for Solar Neutrinos" at Argonne National Laboratory on January 10th, at the University of Pennsylvania on January 23rd, and at St. John's University on January 29th.

Norman Sutin (Chemistry) completed his visiting professor appointment at Columbia University and returned from leave of absence on January 20.

Earl Epstein (Chemistry) was a seminar speaker at Dartmouth College on January 23. His talk was entitled "The How, What and Why of Recent X-Ray Structural Determination of Several Transition-Metal Complexes."

Jerry Hudis (Chemistry) gave a seminar at Argonne National Laboratory entitled "On Line Isotope Separation Work at CERN."

William Gonzalez (Central Shops, currently assigned to the Physics Department) has undergone a second operation within two weeks and has received 22 units of blood. The blood must be replaced on a two-for-one basis. The Gonzalez family has only been able to replace 9 units thus far, which leaves a balance of 35 pints to be repaid.

If any employee in good health wishes to donate blood for Mr. Gonzalez, he or she may do so at the Brookhaven Memorial Hospital in Patchogue, the Mather Memorial Hospital in Port Jefferson, St. John's in Smithtown, or the Central Suffolk Hospital in Riverhead.

Service Awards - February

Twenty Year

Corliss, Lester M...... Chemistry
Fuka, Richard L...... Photography
Heus, Raymond J...... Apld Science
Stoenner, Raymond W...... Chemistry

Ten Year

Bacelli, Leonard S...... PEP
Brown, Donald P...... Mech. Eng.
Connelly, John..... PEP
Craven, Frank J...... PEP
Leavitt, John N...... Mech. Eng.
Mayo, Grant A...... PEP
Phoenix, Charles E...... PEP
Reams, Edward M...... PEP
Schuster, Robert..... I & HP
Smolski, Joseph P...... Mech. Eng.
Sparacino, Salvatore A...... Mech. Eng.
Vitols, Milda E...... Physics

Arrivals & Departures

Arrivals

Freddie O. Lawson..... Medical
Edward Staffire..... Accelerator

Departures

Muriel H. Corcoran..... Medical
Jerome J. Damitz..... Physics
William R. Huebsch..... Accelerator
Theresa Mataragas..... Fiscal
Lorraine E. Millings..... Physics

Coming Attractions

2/14 **BERA Dance**
(Gymnasium)
2/19 **Navy Lecture**
"Medical Electronics" - Howard Pate
(Brookhaven Center - 7:30 p.m.)
2/21 **Holiday**

BROOKHAVEN BULLETIN

Published Weekly for the Employees of Brookhaven National Laboratory

CARL R. THIEN, Editor
DOLORES DEL CASTILLO, Editorial Assistant
CLAIRE LAMBERTI, Copy Preparation
40 Brookhaven Ave. Upton, N.Y. 11973
Telephone 516 924-6262 Ext. 7238

NORBERT J. DERNBACH
Public Relations Officer

Letters To The Editor

Dear Sir:

I agree entirely with M.S. (Brookhaven Bulletin, 2/6/69). BNL needs a barber on site. And M.S.'s comments are so persuasive that no additional arguments are needed.

There are other services, however, that would be equally effective in improving (as M.S. so aptly put it) the "efficiency of the Laboratory personnel by making it more convenient in accomplishing their tasks." How about a branch of White's, or the Motor Vehicle Bureau; or a marine supply store? How about an open bar, a dentist, auto dealers? How about a radio and TV repair shop (oh - we have that already?), or a grocery, jewelry or shoe repair shop? How about a full-time psychiatrist? J.D.

Dear Sir:

I have just finished last week's letter and a cheer for M.S.

But why stop there? If you are going to allow haircuts during lab time - make them free. What kind of department forces their employees to go off site to have their hair cut? - poor dears. Maybe we could have a bus to take them to their favorite barber shop.

I personally would like a super market with free groceries to do my weekly shopping on lab time (of course).

Really, M.S., if you are getting your hair cut on lab time be thankful you are getting away with it. Don't be greedy - most of us work all day. Full Time Employee

Dear Sir:

In accord with M.S.'s splendid suggestion of offering a barber service on site, may I put forth a suggestion to increase rapport among Laboratory employees? I feel that after we have all been primed and pampered at BNL's expense, we should then be feted each week at a HAPPY HOUR from 2-3 p.m., thus enabling all employees to mix and mingle, at BNL's expense, of course! L.U.S.H., Chairman Laboratory Undercover Society for Happiness

Dear Sir:

After reading M.S.'s letter to the editor requesting an on-site barber shop, as an employee, I wish to express my opinion.

First, I was not aware of such a service of BNL which allows lab time to be used for personal business such as a "haircut." In my department, I'm informed to use various symbols on time cards designating reason and length of time taken off.

In that case, may I suggest if the plans of M.S. and others go through, perhaps we should add the symbols SH ("Shave & Haircut") for male and WS ("Wash & Set") for female employees.

Or maybe we'd better just stick to S for "Sick." K.K.

Dear Sir:

In reference to the letter in last week's Bulletin re a part time barber, it is examples such as this that make it increasingly difficult for a Lab employee to defend Brookhaven when outside acquaintances refer to the Lab as "a Country Club."

My impression has been that all facilities on site, for the recreation of employees and their guests, were strictly for use other than during business hours, and of course so called necessities such as haircuts should be taken care of on one's own time. Distance travelled and time spent for such being by no means a cause of concern to the Laboratory.

However, if Lab time is spent for this and it is being condoned, then by all means have a full time Barber-Beauty Salon, then we girls can have touch ups, permanents, manicures, etc. But please don't stop there, how about a laundry and dry cleaning machines, a car wash, and movie matinees. M.V.

Dear Sir:

I have always found your Letters to the Editor informative, sometimes controversial, sometimes amusing, but usually sincere. How?? could you possibly (except of course tongue in cheek) print a suggestion that personal toiletries be attended to on site and on Lab time. I'm all for occasional goofing off, but really you go too far.

Prime Goof-Off Artist N.I.G. Bldg 510

BERA Board Candidates



Eena-Mai Franz



Paul Kelly



Charles Kim



Leslie Lawrence



Emory Egler



Lynn Kalbach

BERA Board Election

An election will be held during the month of February to fill three positions on the Executive Board of the Brookhaven Employees' Recreation Association. On March 1, the terms of Robert Fuchs, Alf Christoffersen and Mary Kinsley will expire. The incumbent Board members include: John Binnington - Research Librarian, Information Division; Woodrow Hobson - Stores Clerk, Supply and Material; George Oldham - Rigger, Plant E&P. The following slate of candidates has been selected by the BERA Nominating Committee for election to the Board.

Emory Egler
 Engineer - Accelerator Department
 "Participation - Basketball, Bowling, Football, Softball.
 Offices - Bowling President and Vice-President; Softball and Bowling Team Captain."
Paul Kelly
 Sign Painter - Plant E&P
 "Participation - Softball, Theatre.
 Offices - Softball Executive Board; Softball Team Captain."
Charles W. Kim
 Scientist - Medical Department
 "Participation - Concerts
 Offices - Concert Group Chairman."

Leslie L. Lawrence
 Scientific Programming Analyst - Applied Math
 "Participation - Softball, Basketball, Golf.
 Offices - Basketball Treasurer; Golf Secretary; Basketball Team Captain."
Eena-Mai Franz
 Chemist - Chemistry Department
 "Participation - Theatre Group, Concerts, Tennis.
 Office - Theatre Group President."
Helen M. Kalbach
 Secretary - Biology Department
 "Participation - Bowling, Theatre Group, Social Activities.
 Office - Bowling Team Captain."

Bowling News

Irma Carl

Purple League
 It was a great night for the Phoubars; not only did they roll a new high team gross of 3107, but they also moved into a first place tie with S&M.
 Ten - count them - ten 500 series were bowled during the night. Dick Vogt 223-599, Marshall Bull 562, Jack Austin 201-538, Mike Iarocci 209-536, John Van Norman 205-527, Joe Scesny 520, Vinnie Felice 518, "Cookie" Spence 211-505, Arnold Benson 502, and Bill Brown 501.

Red League
 Sandbaggers in first, the Bar Flies one point behind them, and the Alphas right on the Bar Flies tail. Two more firsts in the 200 class - John Schuster 228 and Moose "Miloo" 202 - congratulations. Then of course we have G. Spira with 228, J. Jenny 223, E. Sundberg 214, E. Meier 205, A. Manger 202, and R. Larsen 202.

Green League
 Nugatories in first followed by Electrons, Fire Department, and the Reefers - one point separates each of them. McGonnigle rolled a 195/540, C. Tomesch 211/528 and F. Leon 200/524.

Pink League
 Alice Trubicz bowled well, but the Fiscal Assets lost 7 points despite her effort. Marge Stoeckel and Lillian Hillerud continued to push the Pinsplitters toward first place - move over Medigals!! The Fizzles are moving right along to the top with the Hopefuls trying to trip them up every step of the way. Everybody else is headed in the wrong direction! Betty Walczak came up with a high gross game of 253.

Classified Advertisements

Positions Available
 HEAVY EQUIPMENT MECHANIC OPER. (LEADMAN) (1) - Plant Engrg. & Planning.
 Application Deadline: February 18, 1969.
 Employees interested in applying for above positions should inform their Supervisor and file written request with Employment Office on or before deadline date.

Autos & Auto Supplies
 62 PONTIAC BONNEVILLE CONV - V8, auto trans, lt blue body & top, ps/pb, r/h, very clean. \$450. 281-5289, 12-5 p.m.
 63 FORD FAIRLANE - 6 cyl, auto trans, 4 dr, r/h, aqua & white, 53,000 mi, 1 owner. E. Bihn, Ext. 7631.
 65 CHEVROLET IMPALA WAGON - 1 owner, std trans, 6 cyl, excel cond, good tires, must sell. \$1050. Petruk, Ext. 2142, AT6-0124.
 2 CHROME FORD RIMS - 15", w/lg center hole. \$15. R. Gwathney, 589-8533.
 63 JEEP WAGONEER - Ps/pb, auto trans, 4/w drive, Warn hubs, 5 brand new snow tires. \$1400. Vic, 289-8928.
 63 JEEP WAGONEER - Std trans, 4/w drive, ps, very clean. Cliff, GR5-4903.

FORD HEAD - Recently rebuilt & milled for 272-292-312 eng. Asking \$70. Bill, Ext. 7236.
 FORD OFFY TRI-POWER - W/fuel block & progressive linkage, fits 272-292-312 eng. Asking \$60. Bill, Ext. 7236.
 426 RAMCHARGER MARK III COMPETITION ENG - Heads, crank, cam & valves, professionally reworked, over 500 hp. AT6-9197 after 5.
 60 CHEVROLET - 2 dr, good running cond, no problems. 281-6097.
 64 CORVETTE - 2 tops, mags, h.d. suspension, close ratio 4 spd, 365 hp, 4.11 posi rear, FM radio, tinted windows, Hurst shift, 66 louvers & hood. \$2300. AT6-9197.
 66 MUSTANG HDTP - V8, std shift, console. \$1200 firm. Ext. 488.
 57 CADILLAC - 4 dr hdtp, white, has everything, top cond. \$395. Frank, Ext. 481.
 64 CHEVROLET CARYALL - 292 6 cyl, 4 spd trans, h.d. shocks & springs, new brakes, new spare, new 70 amp battery, good rubber. \$800. Eichler, WA9-4876.
 62 CHEVROLET BELAIRE - 4 dr, std trans. Ext. 2816, GR5-7372.
 67 FORD LTD - 2 dr hdtp, 390 cu in, auto trans, snows/stud, sacrifice. \$2000. 585-5261 after 2:30 p.m.
 64 PONTIAC LE MANS - 2 dr, V8, navy blue/blk int, bckts w/seat belts, console stick shift, r/h, 53,000 mi, \$800. 281-4528 after 5:30.
 65 JETSTAR OLDSMOBILE - 2 dr hdtp, dk blue. \$900. 281-6261 after 5.

Camping Club Notice

Camping Club meeting will be held on Thursday, February 20, at 8:00 p.m. in the Recreation Building. Everyone is welcome.

"Gypsy" Call Board

Pianists, who can devote time on Monday, Wednesday or Thursday evenings, are needed to play for "Gypsy" rehearsals. Convenient schedules will be arranged. Interested pianists please call Mary Kinsley (X2821 or 2200).
 Production Committees are looking for workers. There is a place for you if you are interested in make-up, costumes, set construction, set decoration, or any other production work. Production workers please call Don Koenig (X2240) or Flo Counadis (281-6798 after 3 p.m.).

Slo-Break Basketball

by George Latham

The BNL Basketball League is taking a night off tonight so that you all can enjoy the Valentine Dance.
 In last week's action the Knacks continued undefeated by taking the Rat Pack 53-42. Ed Gill had 16 points for the Knacks while John Capute of the Pack lead all scorers with 17 points.
 Medical won by forfeit from Physics. AMD had a cold night shooting and lost to Biology 28-17. Bill Studier and Joe Arata had 10 and 9 points for Biology, while King had 8 points for AMD.
 The Highballs outscored the Stratums 42-25. Bob McGonigle couldn't miss in the first half and scored 13 points to lead the Highballs. Hoyt had 10 points for the Stratums.

Associated League			
	Won	Lost	
Knacks	2	0	
AMD	1	1	
Biology	1	1	
Rat Pack	0	1	
Old Timers	0	1	
Universities League			
Highballs	2	0	
Medical	1	1	
Stratums	1	1	
Physics	0	2	

Indoor Soccer

Anyone interested in playing indoor soccer on Monday evenings at 7 p.m. in the Gymnasium, please contact either D. Cox, Ext. 7602, or M.T. Hutchings, Ext. 7608.

Radio Club

The regular meeting of the Radio Club will be held on Thursday, February 13, at the Recreation Building at 2030 hours. Order of business will be the election of officers.

Gymnasium Is Closed

The Gymnasium is closed to prepare for the Valentine Dance on February 14. Scheduled activities will resume on Monday, February 17 at 5:00 p.m.

REMINDER

BERA VALENTINE DANCE

Tomorrow Night, February 14

at the
Gymnasium

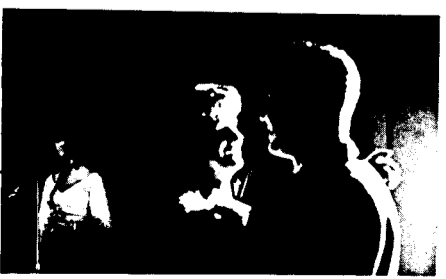
Buy Your Tickets At The Door

Admission:

Employee/Escort \$1.50

Guest 2.00

DANCING from 9 p.m. to 2 a.m.



USNR Research Co. 3-9
Brookhaven National Laboratory
 Upton, New York YA4-6262, Ext. 2910

Drill Schedule

For Quarter Ending March 31, 1969

19 February
 Medical Electronics
 Howard Pate
 Medical Department, BNL

12 March
 The Health Sciences Center, SUNY, Stony Brook
 Dr. E. D. Pellegrino
 The Health Sciences Center,
 SUNY, Stony Brook

19 March
 Comparisons of Contemporary Naval Medicine
 with World War II
 Capt. E.P. Cronkite
 Medical Department, BNL

Autos & Auto Supplies (continued)

62 CHEVROLET SS CONV - Red ps/pb, w/w, V8, auto trans, r/h, good cond. \$500. Fetten, Ext. 588.
 58 CHEVROLET - 6 cyl, auto trans, good running cond. \$100. 928-0927.
 WHEELS FOR VOLVO 122 OR 544 - \$6 takes both. M. Strongson, Ext. 2727, 2441.
 63 FALCON - Std trans, excel cond in & out, new battery, snow tires w/rims. \$300. AT6-8869 after 5.
 60 CHEVROLET CONV - Whole or parts, motor doesn't run, top almost new. 281-8044.
 60 VW BUG - Green, sunroof, new tires, brakes, battery, 36,000 orig mi, excel cond, radio. \$350. 475-8753 after 6.
 66 MERCURY COMET - 2 dr, auto trans, white/red int, very good running and body cond. Reasonable. Inal, Ext. 2851.
 63 FORD GA. AXIE 500 XL - R/h, ps/pb, rebuilt eng & auto trans, blue/blk vinyl top, excel cond. AT6-8468.
 65 CHEVROLET IMPALA - V8, auto trans, ps, 4 dr, 5 very good tires. \$1295. Hank, Ext. 601, LT9-7785.
 55 BUICK - Good running 2nd car, recent brake job. \$175. Schiller, Ext. 2741.
 61 CHEVROLET POWER GLIDE TRANS - \$15. R. Lehn, Ext. 483.
 56 OLDS - Good trans. \$50. John, Ext. 598.
 6.00x15 TIRE - Brand new, never used, Goodyear tubeless super cushion, for '61-'67 Rambler. \$10. Ext. 316, 585-8295
 63 VW BUG - Gordon, Ext. 2416.
 64 LE MANS - Grey/blk vinyl, 2 dr hdt, p/s, bckt seats, console, r/h. Excel cond. \$1000. Gladys, Ext. 476 or 475-5374 after 5:30.

Boats & Marine Supplies

21' BAY CITY EXPRESS CABIN CRUISER - 95 hp inbd, marine F.W. cooled, used 3 yrs, must sell. \$2100. Petruk, Ext. 2142, AT6-0124.
 "SONAR" DEPTH SOUNDER - Model D120, (0-120), (0-240) range. \$50. R. Hodor, Ext. 7630.

Miscellaneous

36" GAS COOKING RANGE - White, immaculate. \$20. Grosso, Ext. 7642. MO9-4357 after 6.
 ROD & REEL - Garcia-Mitchell, Reel no. 302, no. 2554 rod, 10'-2 pc, good cond. \$30. Gus, 744-5149.
 2 ACRES - 500' off Jericho Tpke on Wilson Blvd, Gordon Heights. \$6000. 732-3443.

FIREPLACE WOOD - 325-0567, 727-0271.
 ALBINO RATS - \$1. ea; gerbils, \$1.50 ea. F. Bay, Ext. 445.
 SKIS - 170 cm, Cubco step-in bindings, used 1 season, good cond. \$30. Ext. 2203, AT6-0517.
 HAVE \$90.10 IN SILVER COINS - Will sell for best offer over face. Bob, GR5-5542.
 TACHOMETER - Heathkit, electronic, 2 ranges, 0-4000 & 0-8000 rpm, manual & hookup leads incl. \$18. RA8-0273 after 6.
 2 PC KNIT SUIT - Green & white Bonnie & Clyde, size 9, worn once. Orig. \$65, asking \$30. S. John, Ext. 2380.
 DYNATONE RELAX-A-CISER - Portable, never used. Orig \$100, asking \$50. S. John, Ext. 2380.
 2 YR OLD FRIDGE - Excel cond. \$175. 281-5311.
 4x6 FLAT BED TRAILER - Needs lights put on. \$25. 281-5311.
 2 WAY ELEC INTERCOM SET - \$12; man's bowling ball & bag, blk & white, \$5. B. Shelter, Ext. 2266.
 WHITE BEDRM SET - Dble bed, dresser, chest of drws, night table, almost 1 yr old. Paid \$650, asking \$450. 281-4528 after 6.
 LIV RM SET - 4 pc sectional, blue w/some blk in the blue. \$190. 281-4528 eves.
 ROYAL PORTABLE TYPEWRITER - W/leather carrying case, space bar needs adjustment. \$25. 281-4528 after 5:45.
 FIREPLACE LOGS - Seasoned oak, 18" lengths, various thicknesses. 12/\$1; 25/\$1; 8/\$1. 924-3236.
 PONY - 12.2 h, 4 yrs old bay gelding, jump/hunt schooled, 100% sound, always in ribbons & championships, owner outgrown, sacrifice. Asking \$500. Ext. 2149, JU4-7050 after 6.
 ST. BERNARD PUPS - AKC, beautiful markings, whelped 1/28/69, males / females, taking reservations now. Ext. 418, 732-3443.
 ESCAPE FROM THE ORDINARY - Ultimate in fast-back, cruise at 130, learn what it's all about, introductory flying deal. Arnold, Ext. 7667, 2410.
 BOYS' ICE SKATES - Princeton Shops, child sizes 10 & 11, like new. Orig. \$29/pr, sell \$10/pr. F. Paffrath, Ext. 2287.
 GUITAR & AMP - 2 pickups, amp built in carrying case, accessories, foot switch, cord, flatwound strings, 2 inputs, trebbler. \$55. Charlie, Ext. 2221.
 RIEDALL ICE SKATES - W/guards, adult size 3, fine ankle support, used 1 season. 1/2 price at \$9. E. der Mateosian, Ext. 480.

PEERLESS DEEP WELL WATER PUMP - 1/2 hp, excel cond. Torre, Ext. 423.
 HOT WATER HEATER - 30 gal, LP gas, new, still in crate. Torre, Ext. 423.
 HEATHKIT - Amateur AT-1 C.W. transmitter. \$20. Torre, Ext. 423.
 ICE CRUSHER - Sears, manual, wall mount. \$2. D. Christman, Ext. 7731.
 HO TRAIN SET - 3 gear-driven locomotives, 17 cars, track, transformer, excel cond. Sacrifice, \$40. Ext. 7421, 744-5969 after 4.
 KAY HOLLOBODY ELEC GUITAR - 2 pickups, sep vol control. \$30. Ext. 7421, 744-5969 after 4.
 TRACKMASTER GO KART - Slicks, upholstery, live axle, new McMulloch eng. \$145. AT6-9197.
 BABY CARRIAGE - Pedigree, covered wagon style, navy blue, doubles as car bed. \$25. Ext. 7784.
 CANON FX 135 MM - W/interchangeable 1.8 lens, built-in light meter, speeds up to 1/1000 sec, hard case. \$150 new, asking \$110. John, 722-3743 after 6 p.m.
 1 SILVER WIG - Never used. Cost \$50, sell \$15. Ext. 393.
 POODLE PUPS - AKC reg, male & female, bring home a pup on Valentine's Day. Irene, JU1-6830.
 FREE - 5 wk old mixed terrier & poodle pups, blk w/white "boots," all male, just pick them up. 724-4376.
 MEN'S SKI BOOTS - Nordica Sestriere size 7 1/2 wide, used 2 seasons. \$15. 878-0123 after 6.
 IRISH SETTER PUPS - AKC reg, champion bloodlines, w/shots. Ext. 600, 929-4631.
 VOIGTLANDER CAMERA - 35mm, focar lenses, filters, lens hood, Kontur & Turnit viewfinders, flash unit, like new. Cost \$250, asking \$100. Lydia, Ext. 2928, 475-8962 after 5.
 GUITAR - Like new, \$25; Hammond organ, E111 series, self contained, \$1700. Ext. 2588.
 GUITAR - Folk, nylon strings, good cond. \$30. Rowley, Ext. 631.
 12'x12' TENT - Montgomery Ward's best, alum poles outside, 7' high, used 2 summers (total 4 wks). \$125 new, sell for \$65. Jack, Ext. 7509.
 TRAVEL IRON - \$3; sun lamp & goggles, \$9; Zenith AM table radio, \$10; Phillips 110-220 V teak turn table w/cover, \$25. S.N. Purohit, 744-8755.
 MECH ARTS DRAWING SET - & slide rule, \$5/both; set of 4 horse shoes, \$2; Polaroid Swinger w/case, \$8. Jim, Ext. 567.
 WESTINGHOUSE COOKER & FRYER - Very good cond, \$5; Sunbeam elec iron, \$2; bathroom scale, \$1; Hamilton Beach elec mixer w/juicer, \$2. Jim, Ext. 567.
 GO-KART - Professional type, ready to go. Asking \$75. Ext. 597, AT6-0436.
 SPEED GRAPHIC - 2 1/4x3 1/4, compl, extras, excel cond. Sadofsky, Ext. 2709.
 35MM TWIN LENS CONTAFLEX - A real collector's item, excel cond. Sadofsky, Ext. 2709.
 TAPPAN 30" ELEC STOVE - 4 burner, w/very lg oven & storage drawer, good cond. GR5-6916.
 MID GREEN ENGLISH BABY CARRIAGE - Excel cond, balance of 50,000 mi warranty remaining. 475-2833.

Houses

PT JEFF - 8 rms, 2 1/2 baths, fine neighborhood, near schools, churches & shopping, 2 car garage, old home w/mod facilities in excel cond which must be seen to appreciate. HR3-0016.
 BELLPORT VILLAGE - 3 bdrm ranch, lg liv rm, din rm, den, eat-in kitchen, basement, garage. AT6-3962 after 6 p.m.
 BELLPORT VILLAGE - 2 yr old spacious colonial near everything, 4 bedrms, 2 1/2 baths, fam rm, din rm, dble

garage, basement, deck, wooded, 0.8 acre. \$31,800. AT6-8724.
 BELLPORT - Maple Ave, 3 bedrm ranch, lg liv rm, eat-in kitchen, full basement, oversized garage, deep beautifully treed lot. Asking \$16,900. Ext. 572.
 SHOREHAM - 1 1/2 yr old, 7 rm ranch, 3 bedrms, din rm, fam rm, 2 baths, full basement, 1/2 acre, 6% mort. \$26,000. 744-3764.

For Rent

3 RM APT - W/bath, newly decorated, Moriches area, furn, heat & elec incl, single or couple only. \$105/mo. 878-0792, 878-1969.
 4 BEDRM UNFURN HOUSE - Shirley, 2 minutes from Smith Pt Bridge, baseboard heat, 3/4 fenced 100x125 plot. \$165/mo. JU8-5103.
 3 1/2 RM APT - Wading River, lg liv rm, priv entrance, at beach. Hill, 929-6132.

Wanted

GOLF CLUBS, BAG, CART - Ralph, Ext. 2814.
 VOLUNTEERS - W/some knowledge of theatre and/or choreography to work w/teenagers in Center Moriches Poverty Program. S. John, Ext. 2380.
 12-STRING FOLK GUITAR - Good cond. Higinbotham, AT6-3650.
 OUTBOARD MOTOR - 35-75 hp, fair to good cond, reasonable. Leroy, Ext. 560.
 BOAT - 16' & up, motor & trailer; also chain saw in good cond. John, 281-3778.
 TELEPHONE NUMBER - Of person in Rocky Point who answered ad for Go Kart. Chip, 744-2069.
 HOME - For 5 collie & Heinz 57 mixed puppies, will be small dogs. 281-5311.
 HDTP FOR '61 CORVETTE - 289-2411, 585-8395 after 6 p.m.
 TYPING - Term papers, etc., to do at home. Claire, Ext. 2131.
 PORTA CRIB - Boy's & girl's 26" bikes. J. Krikawa, Ext. 7509.
 GIRL'S 20" BICYCLE - 16" bicycle w/training wheels; good used TV. Ext. 501.
 TO RENT - 3 bedrm house, unfurn, Shirley-Mastic area, April occupancy, Ext. 7175.
 PIANO - Good cond, reasonable, Ext. 2121.
 OVERSEAS TRUNKS - Good cond. Singh, Ext. 524.
 ANYONE - Who wishes expert Income Tax Preparation at your convenience. 744-2821.
 '64 VW HANDBOOK - Bobbie, Ext. 2179.
 HOUSE TO RENT - 2 bedrms, for summer mos only. Ext. 7262.
 TAXPAYERS - Fed & State income taxes prepared in your home. GR5-8330.
 SM DIN RM SET - Preferably colonial, reasonable. 363-6121 after 6.
 TO RENT - 2 bedrm house or apt, 20 mi radius from Lab, Aug occupancy, furn preferred. J. Larrie, Ext. 2204.

Carpools

CARPPOOL - West Sayville area. Ext. 301.
 WOULD LIKE TO JOIN - Carpool from Pt Jeff Village. Dick, Ext. 2108, 2305.
 WOULD LIKE TO JOIN OR FORM - Carpool from Massapequa area, 3 blocks from So State Pkwy at Exit 30, VW. Ext. 2942.

Lost & Found

LOST - Gold charm bracelet, in area of Cafe or Bldg 535. R. Evans, Ext. 2198.

Classified Ad Policy

Deadline is 12 noon Friday for publication the following Thursday.

- The Brookhaven Bulletin classified section may be used only by active and retired laboratory employees.
- All items for sale or rent must be the advertiser's property.
- Persons listing houses, apartments, or rooms for sale or rent, do so with the understanding that these must be available without regard to race, creed, color, or national origin.
- Ads for material acquired for resale in association with a full or part-time business cannot be accepted.
- Ads should be restricted to 20 words or less and typed

- or printed on the form provided, and must bear the employees signature.
- Ads not carried because of space restrictions will be held for publication in the next issue.
- Ads are run only once and must be resubmitted if they are to be repeated.
- Firearms offered for sale or trade may not be brought on site.

<input type="checkbox"/> For Sale: Auto & Auto Supplies	<input type="checkbox"/> For Sale: Houses	<input type="checkbox"/> Carpools
<input type="checkbox"/> For Sale: Boats & Marine Supplies	<input type="checkbox"/> For Rent	Check <input checked="" type="checkbox"/> the heading applying to your ad.
<input type="checkbox"/> For Sale: Miscellaneous	<input type="checkbox"/> Wanted	Print or type your ad in 20 words or less.

(Name & Phone No. To Call)

If this ad concerns housing for sale or rent, such housing is available without regard to race, creed, color, or national origin.

Employee's Signature..... Life No..... Ext.....

Send to: Brookhaven Bulletin, 40 Brookhaven Avenue