



BROOKHAVEN BULLETIN

Published by the Brookhaven National Laboratory Public Relations Office



Volume 23, Number 8

February 20, 1969

Conference Center Lights Burn Late



Eleanor Dahl works late at night in the empty Brookhaven Conference Center to type up reports and papers that must be ready for the start of the morning session of the IAEA Panel on Neutron Data Compilation. —Humphrey

IAEA Meeting Ends After Fruitful Week

After a week of deliberation, successfully concluded in spite of weather-caused delays in arrival of participants, the IAEA Panel Meeting on Nuclear Data Compilation ended on Friday, February 14, at 4 p.m.

The meetings, originally scheduled to begin on Monday, February 10, did not begin until the afternoon of the 11th when a quorum could be assembled. By the time the last session was convened, only two of the original 34 invitees were unable to reach Brookhaven.

Fourteen papers were considered during the formal sessions by the panel which consisted of scientists from 12 countries, the European Nuclear Energy Agency and the IAEA. Representatives were present from the National Neutron Cross Section Center on Nuclear Data, Obinsk, USSR; the European Nuclear Energy Agency's Neutron Data Center, Saclay, France; and the IAEA Nuclear Data Unit, Vienna.

Radiation Seminar To Be Hosted By BNL

Radiation processing is being recognized as a growing part of the U.S. industrial life. A number of industrial concerns are already using large-scale high energy radiation devices to a limited extent. Several companies recently have been formed to provide radiation processing services to users with limited financial resources. There is a need for engineers and scientists trained in the use of radiation devices.

Accordingly, on March 3 and 4, under the auspices of the AEC, BNL will conduct a seminar on "Radiation Chemical Processing Research." The purpose of the seminar is to provide an opportunity for those versed in the field to share experiences with each other, and with those whose knowledge of radiation chemistry or radia-

tion chemistry or radia- Polytechnic Institute of Brooklyn. He is also Co-Director of the Engineering Concepts Curriculum Project, Chairman of the National Academy of Engineering Committee on Interplay of Engineering with Biology and Medicine, a member of the New York City Mayor's Science and Technology Advisory Committee, a member of the NSF Advisory Committee on Engineering, and the National Academy of Engineering. His talk will be entitled "Technology and General Education," and he plans to discuss some experiences and problems in attempting to introduce some technological literacy in the education of people who are not majoring in science and engineering.

French Group of BNL

The next meeting of the French Group will take place Wednesday, February 26, at 8:30 p.m. at the Cafeteria-Conference Center. One, or very probably both, of the following films will be shown: Les Pêcheurs de Terre-Neuve, and France à Gogo.

The films will be followed by discussion period. A donation of \$1.00 per person will be collected.

Mr. Marcel Blistène will return for his second talk on Monday, March 24. Please mark the date.

Suffolk Students Scrutinize Lab

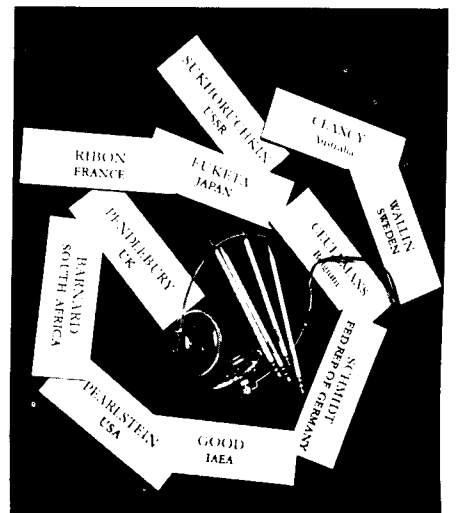
Over 100 students and teachers from 25 Suffolk County High Schools attended Science Youth Day at Brookhaven Lab on Tuesday.

The student event is held each year in observance of the anniversary of the birth of Thomas Alva Edison, who was born on February 11, 1847. During the annual celebration, selected students are given a close look at one phase of the Laboratory's work. This year, the program was oriented towards the Department of Applied Science.

On arrival at the Lab the students were greeted by Dr. Warren Winsche, Chairman of the Department of Applied Science, who introduced Bernard Manowitz and Robert Powell who gave presentations on nuclear engineering and reactor operations.

After having lunch in the cafeteria, the students took seven busses to visit various research facilities used by the Department of Applied Science. After the tours were completed, the program ended in the late afternoon.

Bus guides for the students were: Mary Conway, Evonne Hammond, Lynn Kalbach, Jean Petterson, Barbara Pinto, Frances Scesny and Becky Sutter.



Data center representatives and users jointly reviewed how they could meet the demands and needs of experimental and theoretical neutron physicists, evaluators and reactor physicists, as well as other existing and potential users of the compiled data.

Meeting Arrangements

During the course of the meetings, behind-the-scenes workers from BNL were constantly busy with arrangements necessary to keep the conference flowing smoothly. Papers were reproduced before the start of each session; subcommittee reports were written after the close of each session, and were typed and reproduced by secretaries working late hours in the Conference Center.

Wednesday night Eleanor Dahl worked until 3 a.m. and Joyce Wasson started at 5 a.m. to prepare material for the open-

(continued on Page 2)



Professor John G. Truxal, Polytechnic Institute of Brooklyn, speaker at BNL Radiation Seminar.

tion processing is limited, thus increasing awareness and interest in this new field.

The role of the electron accelerator in Radiation Chemical processing, the development of a radiation processing ethyl bromide, surface effects of radiation, radiation chemical reactor design, radiation chemical processing research on campus, and chemonuclear studies will be among the subjects discussed.

Invited speakers will include Professor John Truxal, Polytechnic Institute of Brooklyn; Dr. David Harmer, The Dow Chemical Company; Professor Joseph Silverman, University of Maryland; Dr. Edward P. Stahel, North Carolina State University; Dr. Bruce W. Wilkinson, Michigan State University; Dr. William Jester, Pennsylvania State University; and Dr. Nelson Marans, W. R. Grace and Company.

Dr. Truxal, the dinner speaker on the evening of March 3rd, is a Professor at



Participant in the IAEA Panel Meeting speaks during a regular session. Each speaker has a microphone and a headset to enable him to listen to remarks in either Russian or English. Two translators work in each

of the two booths at the rear of the conference room. Chairman of the panel is Dr. K. Parker, of the United Kingdom (at right with glasses.)

—Humphrey

International Neutron Data Meeting



Dan Schaeffer, Conference Officer



Sol Pearlstein, Conference Host



John Stehn, BNL Observer



Murrey Goldberg, BNL Participant



USSR participants and observers listen to Russian translation of the panel meeting proceedings.



Panel meeting Chairman Dr. K. Parker (right) and Scientific Secretary Dr. V. Konshin preside at all sessions.

(continued from page 1)

ing session the next day. During the sessions, travel arrangements had to be made or adjusted, and phone calls and committee reports had to be completed.

At the meeting, Daniel Schaeffer, acting as Conference Officer, kept a log of speakers and kept track of the agenda. All of the sessions were recorded on tape by Jack Craig and John Pontierri. Translations from English and Russian were managed by a crew of four interpreters assisted by Steve Amoretty who worked during the sessions as well as at the various social affairs in the evenings.

Visits to Homes

On Thursday night, all participants were invited to dinners in the homes of BNL staff members. Susan Pearlstein, wife of Dr. Sol Pearlstein, was host to a group of

twelve guests, including most of the Russians. She served a formal dinner in her Port Jefferson home, consisting of breast of chicken with rice and string beans, and pecan pie for dessert.

Jean Goldberg, wife of Murrey Goldberg, served a buffet for twelve guests from European countries, which consisted of shrimp jambalaya, cold chicken, corn bread, cucumber soup, and pumpkin and lemon meringue pie for dessert.

Jean Stehn, wife of John Stehn, also served a buffet to a dozen visitors from all parts of the globe. Scalloped potatoes, corn pudding, meat loaf and salad were topped off by two layer cakes, one chocolate and one white.

A small group had dinner with Garman and Naomi Harbottle in their home in Old Field.

On Friday, the last day of the meeting, a final report in draft form was presented to the participants. At 4 p.m. the translators' booths and electronics equipment was disassembled.

According to Dr. Sol Pearlstein, host to the meeting and Director of the National Neutron Cross Section Center, the conference was possible only because of the "small" people who turned out to be quite big: the drivers who went out of their way to bring people here in spite of the snow; the secretaries who worked all night to type and reproduce reports; the messengers who performed all manner of small tasks; and the Quick Copy people who reproduced all the material. And offsite, the wives who prepared dinners for the foreign visitors for an evening in a typical American home.



Dorthoy Schroeder and Joyce Wasson discuss travel arrangements for the panel members.



Dr. Lief Hjarne, formerly with BNL, now with the IAEA chats with the Scientific Secretary of the Panel, Dr. Valentin Konshin.



John Pontierri and Jack Craig adjust tape recording equipment.

Cooking Exchange Meeting

On Thursday, February 27, 1969 a meeting of the Cooking Exchange will be held in the Apartment Area Recreation Building from 3 to 5 p.m. "Breakfast in Various Parts of the World" will be the theme for cooking demonstrations.

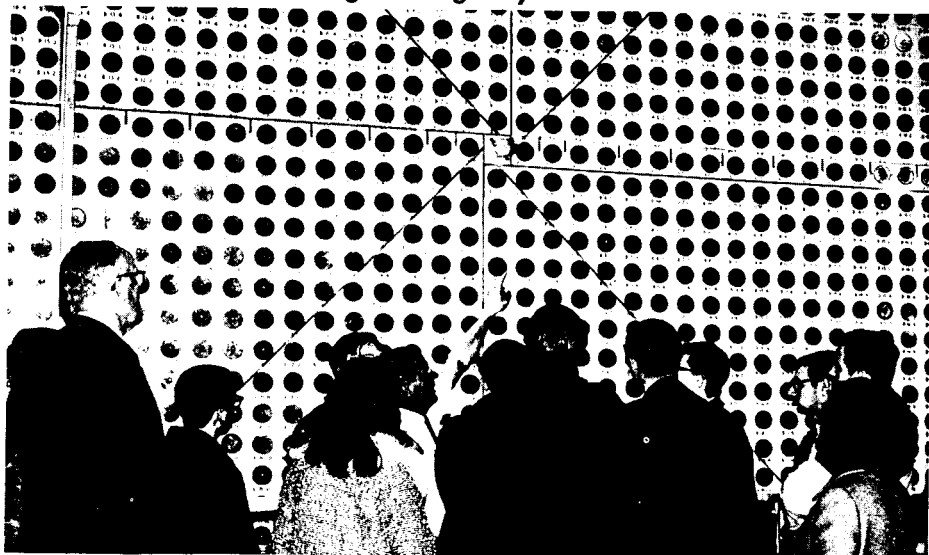
Each adult will be asked to contribute 50¢ to pay for the cooking demonstrations and the babysitters which are provided for children.

Hospitality News

The next regular Hospitality Committee coffee meeting will be held on Monday, February 24, from 10 a.m. until noon in apartment 6-C.

Don't miss this opportunity to make new acquaintances and visit with old friends. Bring the children - everyone is welcome.

Suffolk Students Have Engineering Day



A group of Suffolk County high school students view the loading face of the Brookhaven Graphite Research Reactor as part of the Science Youth Day tour. While in the Reactor building they also were shown the control panel for the Chemo Nuclear Loop experiment. —Rosen

BROOKHAVEN BULLETIN

Published Weekly for the Employees of Brookhaven National Laboratory

CARL R. THIEN, *Editor*
DOLORES DEL CASTILLO, *Editorial Assistant*
CLAIRE LAMBERTI, *Copy Preparation*
40 Brookhaven Ave. Upton, N.Y. 11973
Telephone 516 924-6262 Ext. 7238

NORBERT J. DERNBACH
Public Relations Officer

Letters To The Editor

Dear Sir:

My name is Howard Fales. I work in T-109. So much for that. (Note no initials.)

To M.S. on his barber shop I would like to say your letter was a masterpiece of "spooof." I am sure it will accomplish just what you wanted it to do.

All one had to do was read the original letter and think for just a heartbeat or two. "What is M.S. really trying to say?" If anyone had, the type of reaction that came last week may not have been the same. Either you would have congratulated him on a great piece of "spooof" or damned him for potentially ruining your good thing.

I would have rather done one of these things than to have taken it literally.

Howard

P.S. - Dear Boss:

I wrote this note on my lunch half hour.

Dear Sir:

What a resounding rebuttal by several of our full-time employees to the barber shop proposal. It is refreshing to have evidence that some of our staff are dedicated to a full day's performance for a full day's pay.

H.B.H.

P.S.: On the other hand, a case could be made for the fact that since our hair grows on company time, it should be cut on company time (?).

Dear Sir:

For the sake of justice and fair play, would you reprint my memo to BERA's Nominating Committee (memo was attached to ballot last week):

"I have voted for the two candidates Eena-Mai Franz and Lynn Kalbach. If these candidates are indeed eligible, then sex discrimination should not be part of this election. The proportion of men to women at BNL is certainly more than 2 to 1. Mathematically speaking, and in accordance with BERA's present policy we should have a lady's finger to represent the women for each man on the Board!"

B.M. Lomonosoff

Arrivals & Departures

Arrivals

William J. Cahill.....Applied Science
Richard M. Lambrecht.....Chemistry
Jacob A. Seyfert.....Accelerator

Departures

Vincent Abbruscato.....Mech. Eng.
David Ophir.....I & HP
Thomas S. Platt.....Biology
Stanley T. Ruke.....Security
Everett J. Rutan.....Accelerator
Alan G. Underbrink.....Biology

In Memoriam

Ernest Hart, an experimental welder with the Central Shops Division, died suddenly on Friday, February 14. He had been employed by BNL since March 1958. He is survived by his wife Mary and two daughters. He was buried at the Long Island National Cemetery, Pinelawn.

Mail Embargo Lifted

The Post Office embargo on foreign surface mail, which was imposed because of the Longshoreman's strike, has been lifted.

Foreign surface mail and packages that has been delayed because of the strike will all be delivered within the next two weeks, according to Steve Garrett, Upton Postmaster.

No Shoe Sales in March

The Laboratory's contract for supply of safety shoes expires on March 31, 1969. In accordance with Purchasing practices, a number of companies had an opportunity to bid on renewal of this contract and a different vendor is the apparent low bidder.

To avoid complicating the transition from one vendor to another, no orders will be accepted for "option" shoes during the period from March 1st through March 31st.

Engineer Retires



Everett J. Rutan, an engineer with the Accelerator Department since 1954, retired on Tuesday, February 18. Mr. Rutan, who lives with his wife in Southold, will leave today for a vacation in Florida. After returning to Southold in mid-April, the Rutans will spend some time visiting with their children and grandchildren. Rutan has worked on the design and construction of both the original AGS power system and the one for the AGS Conversion project. He has just returned from Germany where he consulted with the manufacturers of the new motor generator set.

IBEW General Meeting

The next general meeting of Local 2230 IBEW will be held on February 27, 1969 at 8 p.m. in the K of C Hall, Railroad Avenue, Patchogue. The agenda for the evening will consist of general business plus committee reports.

Holiday Schedule

The Brookhaven Center will be closed on February 21, 1969. The Snack Bar at the Cafeteria will be open from 9:00 a.m. until 2:00 p.m.
Vending machines in Building 912 provide eating facilities when the Cafeteria is closed. This service is for authorized personnel only.

BERA Film Series

February 27 at 8 p.m. at Berkner Hall
Bus Stop

The Spring Movie Series begins next Thursday, February 27, 1969, with *Bus Stop*. There will be three more commercial movies, one in March and two in April. The Film Study group will also show two special movies, one each in March and April which will be exclusively for subscription ticket holders. More information about subscription tickets and the new complete movie schedule for the spring will be printed in the next week's *Brookhaven Bulletin*.

Although the play was set in Grace's Diner, the movie version of *Bus Stop* takes place in Ohio "out West" hangouts; a ranch, a dance hall, and an exciting rodeo in Arizona. A hurlyburly cowpoke has come to the big city to bag a wife; his target is Marilyn Monroe. She is a "chantoosie" from the Ozarks who sings in the local cafe. Need we say more? This is a good "vintage" Marilyn Monroe movie.
V. Levis

Bowling News

Irma Carl

Purple League

The Phoubars took undisputed possession of first place as S&M lost a couple of close ones to the Twisters. High scores for the evening were Joe Rolfes with a 201-548, Joe Scesny 548, Emory Egler 201-528, Carl Cantera 518 and John Van Norman 210.

Red League

The Sparks have come up and latched on to first place, putting the Sandbaggers into second by one point. The Dimwits and Barflies are tied for third. S. Kiss rolled a 226, R. Larsen 218, K. Robins 215, N. Parrinello 212, W. Kollmer 210, E. Malcolm 209 (a first timer), and J. Ferrante 201.

Pink League

As predicted, and despite Ann Kirkpatrick's valiant effort, the Medigals moved over and relinquished first place to the Pinsplitters by a slim margin of three points. The Fizzles maintained third place by only one point with the "never say die" Fiscal Assets (Pat Fox 628 gross) and the Hopefuls breathing down their necks.

Let's break the monotony gals. Will someone - anyone - please roll a 200 game or a high scratch series!!

Soccer At The Gym

The gym has been scheduled on Monday evenings from 7:30 to 9 p.m. for our soccer enthusiasts. So far, one work-out has been held and approximately twenty employees have indicated their interest. If you would like to join the fun, stop by on Mondays.

Westbury Music Fair

The Recreation Office has just been notified of the Westbury Music Fair Program for the next five months. The Box Office will remain closed until April; however, you may order tickets now at the Recreation Office.

Program

- Sat. April 12 - Richie Havens
No discount prices
- Sat. April 19 - Canned Heat
No discount prices
- Sat. April 26 - James Brown
No discount prices
- Sun. April 27 - Iron Butterfly
No discount prices
- April 28-May 11 - "The Don Rickles Show." Discounts Monday, Tuesday, Wednesday, Thursday, and Sunday nights
- May 13-18 - "The Totie Fields Show:"
Discounts Tuesday, Wednesday, Thursday and Sunday nights
- May 20-25 - "The Jerry Vale Show" with Pat Cooper: Discounts Tuesday, Wednesday, Thursday and Sunday nights
- June 2-15 - "The Alan King Show" with Jose Greco: Discounts Monday, Tuesday and Sunday nights
- July 8-20 - "The Buddy Hackett Show:"
Discounts Tuesday, Wednesday and Thursday nights

Valentine Dance Was Another BERA Success

The BERA Valentine Dance Committee should take a well deserved bow for doing such a fantastic job last Friday night. The Committee consisted of Duke Worthington and Jim Ryan, Co-Chairmen, with Al Velasco, Paul Kennedy, John Nicoletti, Tom Nelson and George Leverock.

About 450 employees and guests were on hand to enjoy an evening filled with music, singing and fun.

The biggest attraction proved to be a Giant Valentine Heart that was opened five times during the evening, amid much shouting and the piercing sound of an automatic horn, by the lucky holders of keys that were distributed among all present. The first winner was Susan Lore, daughter of Charles Lore, who chose a Pinch bottle of 12-year old scotch. Following Susan were Lorraine Petro, wife of James Petro, who picked up a magnum of champagne; Gert Jenny, wife of John Jenny, took a beautiful Valentine floral arrangement; Diane Duncan, guest of Joseph O'Reilly, was the lucky winner of two choice seats to BERA's next Special Event; and Del Wenner, guest of Ralph Perry, who got a free pass to swim in the BNL Pool for a full year.

As you can see on the happy faces of the people in the pictures - a good time was had by all.

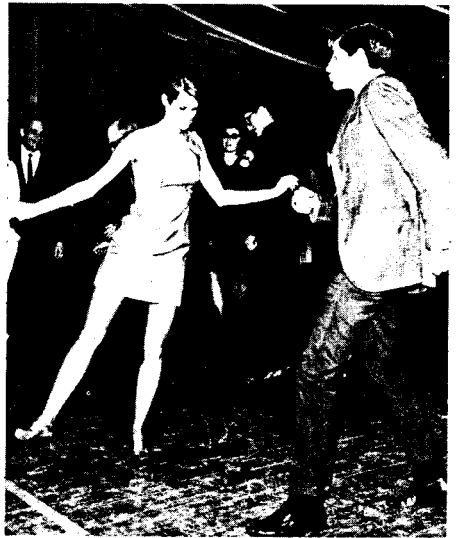
Hearts and Flowers At BERA Dance



Gert, wife of John Jenny, Accelerator, receives her prize of flowers from Co-Chairman of the dance committee, Duke Worthington.
—Torre



Margie Farrell dances as the Tony Forlano band plays.



Not all the dances were slow.



Elton Tank - or is it cupid?



Blanche Laskee gives out keys and prizes at the door.



Prize winner Susan Lore with her father Charles, of Central Shops.



Harriet Smith was in charge of the Valentine Prize Booth.

"Sea Gulliver" To Aid Commercial Fishermen

"Sea Gulliver" will travel to the bottom of the mouth of the Potomac River in a test study of lilliputian phytoplankton. The goal of the Sea Gulliver project is to take much of the guesswork out of commercial fishing.

Development of the device, a cylindrical instrument about eight inches in diameter and a foot long, is by Biospherics Research, Inc., of Washington, D.C., under contract from the AEC as part of an effort to introduce isotope technology to industry.

The Sea Gulliver project is based on use of radioisotope techniques to measure growth of phytoplankton - the microscopic sea plants that grow by using the sun's energy, carbon dioxide, and water.

Phytoplankton, the first link in the ocean's food chain, are eaten by successively larger organisms and ultimately sustain the total fish population. A measurement of the rate at which plankton reproduce will provide an estimate of the food available to fish and, hence, the size of the coming fish crop.

The instrument is being designed for automated unattended operation under the sea to trap small samples of sea water and plankton in transparent containers. Radioactive carbon will then be released into the sample and will be incorporated into the plankton during normal photosynthesis. After several hours of growth, the plankton will be removed by filter, and the incorporated radioactivity will be measured. The amount of plant growth which takes place can thus readily be calculated. The data obtained in the periodic tests will be stored in the instrument.

Should the concept prove successful, a network of Sea Gullivers strategically located in the oceans would inform commercial fisherman of the size, timing, and location of the major fish harvests. The instruments could be interrogated periodically by ships or satellites, and the data would be processed by computer.

Radioactive carbon techniques to determine primary productivity (the rate at which carbon is fixed by photosynthesis in the seas to start the food chain) have been used manually by research biologists for years. However, unless automated, the method is too costly and time-consuming to be practical in large bodies of water.

The new device will use design features developed for an instrument to seek life on Mars. This instrument, named "Gulliver," was designed under sponsorship of the National Aeronautics and Space Administration.

Classified Advertisements

Autos & Auto Supplies

62 PONTIAC BONNEVILLE CONV - V8, auto trans, lt blue body & top, ps/pb, r/h, very clean. \$450. 281-5289, 12-5 p.m.

62 FALCON STATION WAGON - 1 owner, 6 cyl, std trans. \$275. A. Panasci, Ext. 2349, 585-2908 evs.

56 FORD VICTORIA - "312" eng, good seats, tires, brakes, etc. Bill, Ext. 7236.

65 CHEVROLET IMPALA WAGON - 1 owner, std trans, 6 cyl, excel tires, good cond. \$1050. Petruk, Ext. 2142, AT6-0124.

2-15" CHEVY RIMS - \$5; misc parts, fuel pumps, lights, etc. for '55-'56 Ford. Bill, Ext. 7236.

66 MUSTANG - V8, console, std shift, excel cond. \$1300 firm. Frank, Ext. 7173.

64 PONTIAC LE MANS - V8, navy blue/blk int, console stick shift, bckts, seat belts, r/h, 53,000 mi, new mufflers, etc. \$650. 281-4528 after 6.

68 VW CAMPER - Excel cond, many extras, call for inspection, demonstration & price. R. Rakenius, 744-2797.

58 WILLYS JEEP - 4 w/d, snow plow, many extras, drafted, must sell. 929-4432 after 6.

64 CHEVROLET BISCAYNE STATION WAGON - 6 cyl, std trans, radio, very good tires, very good running cond. \$550. Ext. 612.

62 FALCON STATION WAGON - Rebuilt eng recently installed, runs well. \$200. Ed, Ext. 2251.

65 VW STATION WAGON - 50,000 mi. \$800. AN6-4245.

65 BARRACUDA - Needs body work. \$850. Monty, 231-6832 after 5.

68 SS 396 EL CAMINO - 4 spd, custom tarp on bed, perfect cond, 7 mos old, must sacrifice. E. Metzler, Ext. 2512.

60 CHEVROLET CONV - Top almost new, motor doesn't run, good for parts. 281-8044 after 4.

64 FORD STATION BUS - Camper's delight, needs eng. John, Ext. 7461.

62 CHEVROLET SS CONV - Auto trans, V8, ps/pb, r/h, w/w, reasonable. J. Fetten, Ext. 588.

64 KARMAN GHIA - Low mileage, excel cond. \$1200. Ext. 7173.

WHEELS FOR VOLVO 122 OR 544 - \$5 takes both. M. Strongson, Ext. 2727, 2441.

66 MERCURY COMET - 2 dr, auto trans, white/red int, very good running & body cond. Reasonable. Inal, Ext. 2851.

60 RAMBLER AMERICAN WAGON - Crushed fender & bumper, otherwise good running cond. \$50. Ext. 7684.

62 BUICK LE SABRE - V8, 2 dr htdp, ps/pb, excel cond. \$450. Wright, Ext. 7254, GR5-7589.

67 VW SQUAREBACK STATION WAGON - Blue, r/h, snows, a most unusual car. B. Schubert, Ext. 7517, JU4-8492.

66 VW - White, r/h, snow tires & wheels, 30,000 mi, good cond. B. Schubert, Ext. 7517, JU4-8492.

4 NEW TIRES - For beach or truck, recapped 8.20x15. Sacrifice, \$40. EM3-7038 after 5.

64 COMET - 2 dr sedan, std trans, very good cond, new battery, muffler, 2 snow tires, etc. \$600. G. Bengtsson, Ext. 7574.

1929 STUDEBAKER COUPE - Rumble seat (or mother-in-law seat), straight 8, wood spoke wheels, good cond, on road. \$800. R.W. Aichroth, JU1-5786.

Boats & Marine Supplies

21' BAY CITY EXPRESS CABIN CRUISER - 95 hp Marine inboard, f.w. cooled, used 3 yrs, like new, must sell. \$2100. Petruk, Ext. 2142, AT6-0124.

16' BOAT & MOTOR - '56 Johnson 30 hp, boat needs some work, motor needs a good tune up. \$75/both. Ext. 639, 325-1570 after 6.

MARINE TOILET - Sands "Winner," rebuilt but never used. \$30. Wes, Ext. 2340.

OUTBOARD MOTOR STAND - F. Chandler, Ext. 2231.

SPHERICAL COMPASS - Danforth white "Lodestar," mounting bracket, correctors & night light, new. \$25. Paul, Ext. 7247.

HYDROPLANE - Light plywood, fiberglassed, ready to go, up to 10 hp. \$30. Ext. 353, AT6-0436.

32' STEPHENSON JERSEY SKIFF - 1960, 210 hp Chrysler eng, boat & motor used 3 yrs, like new cond, needs inside finishing work. \$1600. AT6-0688.

Miscellaneous

VOIGTLANDER CAMERA - 35 mm, focar lenses, filters, lens hood, Kontur & Turnit viewfinder, flash unit, like new. Cost \$250, asking \$100. Lydia, Ext. 2928, 475-8962 after 5.

IRISH SETTER PUPS - AKC reg champion bloodlines, w/shots & wormed. Ext. 600, 929-4631.

DYNATONE RELAX-A-CISER - Portable, never used. Orig \$100, asking \$50. S. John, Ext. 2380.

AURORA MODEL MOTORING LAYOUT - HO scale, many extras, 6 race cars, 1 truck, orig packages. New last yr \$69, sell \$35. B. Lomonosoff, Ext. 7386.

PEERLESS DEEP WELL WATER PUMP - 1/2 hp, excel cond. Torre, Ext. 423.

HOT WATER HEATER - 30 gal, LP gas, new, still in crate. Torre, Ext. 423.

HEATHKIT - Amateur AT-1 C.W. transmitter. \$20. Torre, Ext. 423.

8" TABLE SAW - Craftsman, cast iron, w/stand & motor. \$30. Wes, Ext. 2340.

FIRE LOGS - For the man with king size fireplace, seasoned oak 2-2 1/2' long. 8/\$1.50. 924-3236.

2 PC KNIT SUIT - Green & white Bonnie & Clyde, size 9, worn once. Orig \$65, asking \$30. S. John, Ext. 2380.

SOLID WALNUT HEADBOARD - W/shelves, for king size bed, like new, best offer; tap dancing shoes, size 3, \$3. O'Connor, Ext. 2544, 286-9725.

SIMMONS HIDE-A-BED - 66" wide, best offer. I.A. Singer, Ext. 455.

PICNIC TABLE - W/attached benches; youth bed; crib; bedrm set; make offer. Nancy, 286-9009 evs.

7 PC BEDRM SET - W/mattress & box spring, suitable for young child up to 12 yrs, natural finish. \$50. H. Boomer, 727-3830 after 6.

ST BERNARD PUPS - AKC reg, whelped 1/28/69, 5 males, 2 females, taking reservations now. \$150. Ext. 418, 732-3443.

2 ACRES - 500' off Jericho Tpke on Wilson Blvd, Gordon Heights. \$6000. 732-3443.

AKC DOBERMAN PINSCHER PUPS - Storm & Ebonair breeding line. 744-9071.

GERMAN SHEPHERD (1/4-3/4 COLLIE?) PUPS - Both male (AKC) & female parents I own, whelped 2/11, 5 males, 6 females. Ext. 2984, 281-5771.

2 BLONDE MAHOG END TABLES - Glass tops, step tables, good cond. \$25/pr. 744-6885 after 6.

LG SMOKY TOPAZ RING - Appraised at \$50, sell for \$40. Louise, Ext. 2245.

JET WATER PUMP - Peerless 1/2 hp deep well, excel cond. Torre, Ext. 423.

LP GAS HOT WATER HEATER - New, still in crate, Rheems glass lined. Torre, Ext. 423.

DYNAMOTOR - PE 103 w/cables & switches, input 6/12 VDC 21/11 amps, output 500 VDC 160 MA. Make offer. Torre, Ext. 423.

MINIATURE POODLES - Blk, AKC reg, born Jan 2. \$75. Ginny, Ext. 2180, 732-5408 after 6.

FRIGIDAIRE REFRIG - GE washing machine; Caloric gas range w/oven; cheap; high bidder takes all. R. Rakenius, 744-2797.

POLAROID SWINGER & CASE - Perfect cond, hardly ever used. \$10. Ext. 7529.

ESCAPE FROM THE ORDINARY - Ultimate in fast-back, cruise at 130, learn what it's all about, introductory flying deal. Arnold, Ext. 7667, 2410.

TELESCOPE - 5.75 in, Schmide-Gassegrain reflector, ultra precision, clock drive, etc, similar to "Questar" but larger. \$575. AN5-5740.

AIRCRAFT ARC RECEIVERS - New, w/conversion instructions, 1 long wave, 1 broadcast band. \$5 ea. Ext. 597.

OLD TYPE RADIO TUBES - 851's, 307's, many others, incl tungar rectifiers, give-away prices. Ext. 597.

DISHWASHER - GE Mobile Maid portable, model SM200B. \$100. Ext. 7784.

AUSTRIAN SKI BOOTS - Size 6 1/2 women's Koflach boots, new last season. Bought for \$45, sell for \$25. Palevsky, AT6-1046.

ICE SKATES - Boy's size 3, excel cond. \$5. E.W. Anderson, Ext. 2835.

BAUMRITTER HEADBOARD - Rock Maple Gallery, twin size. \$25. 924-3469.

FERRARI ACCORDION - 120, must be seen, w/case. \$125. George L., Ext. 2586.

LADIES' SHOE BOOTS - Bl rubber, sm size 9, fur trimmed, \$2; baseball shoes, size 6, \$2; man's high rubber shoe boots, size 9, \$2; Devilbus vaporizer, \$5. Jim, Ext. 567.

CAMERA - Voigtlander folding compur shutter, 250 sec 4.5 lens, uses 120 film, \$5; elec heater, \$3; liv rm drum table. \$5. Jim, Ext. 567.

ASSORTED FISHING TACKLE - 1 salt water boat rod; 2 star drag reels; asst lures, sinkers, hooks, etc, lg tackle box for all, \$10; 5x7 tent, sewn floor, no poles, mosquito net, \$10. Jim, Ext. 567.

BUNK BEDS - Ladder, rail, no mattresses. \$35. GR5-0037.

CRAFTSMAN JIG SAW - Ext. 2816, GR5-7372.

WRITING DESK - W/drawers & chair, 1 yr old, new \$50, sell for \$25; tricycle, \$5. G. Bengtsson, Ext. 7574.

AMPLIFIER - 15 watt Lafayette mono, excel cond. \$10. Rau, Ext. 2424.

ASSTD SIZE 14 CLOTHES - Like new, some w/tags still on; blk spring dress coa, good cond; winter plaid car coat, good cond. Newlands, 732-2025.

ICE SKATES - Boy's, child sizes 10 & 11, Princeton shops. Orig \$29/pr, sell \$10/pr. F. Paffrath, Ext. 2287.

OAK FIREWOOD - Seasoned, guaranteed to burn, long or sm logs, delivered or pick up, reasonable. 732-9517.

Houses

VERMONT - Year-round vacation house, 2 bedrms, knotty pine liv rm, fireplace, swimming pool, 1/2 acre, near Killington ski area & several lakes. L. Emma, Ext. 642.

SHIRLEY - Tile bath, lg liv rm, modern eat-in kitchen, full basement, att garage, brick frontage, on 1/2 acre, near stores, also rent opt to buy. 281-5771.

SHIRLEY - 5 yr old split level, 4 bedrms, 2 baths, lg rec rm, garage, basement, w/w carpet in liv rm & bedrm, near all schools, beach & Lab. \$17,500. 281-4528 after 6.

MIDDLE ISLAND - 6 rm ranch, 3 bedrms, fireplace, 2 car garage, s/s, full basement, back fenced, h/w oil heat. \$18,000. Andy, HR3-3077 days, Ext. 7642 nights.

BELLPORT - Maple Ave, 3 bedrm ranch, lg liv rm, eat-in kitchen, full basement, oversized garage, deep beautifully treed lot. Asking \$16,900. Ext. 572.

BELLPORT VILLAGE - 2 yr old spacious colonial near everything, 4 bedrms, 2 1/2 baths, fam rm, din rm, dble garage, basement, deck, wooded, 0.8 acre. \$31,800. AT6-8724.

SOUTHAVEN - 3 bedrm split level, unfinished play rm, basement, garage, 1/2 acre. \$23,000. 286-3991.

For Rent

2 BEDRM UNFURN HOUSE - Holtsville, 10 mi from Lab, 3/4 fenced. \$150/mo incl heat. Bob, Ext. 7334, 289-2159.

UNFURN APT - Wading River, 3 1/2 rms, priv entrance, at beach, avail April 1. Hill, 929-6132.

Wanted

FREEZER - Sm, upright or chest, good working cond & very reasonable. Write interoffice, Fales, T-109.

HOME - 1 yr old tri-color collie, AKC, female, gentle & affectionate, not housebroken, good w/children. Nancy, Ext. 2114, 286-9009.

BABYSITTER - Holbrook area, my home. 585-4202.

MOTORCYCLE - 150cc, used but in good cond. Evelyn, Ext. 7339, 473-8168 after 5.

VOLUNTEERS - W/some knowledge of theatre and/or choreography to work w/teenagers in Center Moriches Poverty Program. S. John, Ext. 2380.

TUTORS - For children ages 6-18 in Center Moriches Poverty Program. S. John, Ext. 2380.

TYPING - Term papers, etc., to do at home. Claire, Ext. 2131.

TO RENT - 2 bedrm apt or house, 20 mi radius from Lab, occupancy Aug. J. Larrie, Ext. 2204.

BABYSITTING - E. Patchogue, Bellport, Brookhaven, weekends, week nights (early), reasonable, reliable. Andrea, 286-9639 after 4:30.

HOUSE TO RENT - 3-4 bedrms, furn, Brookhaven-Bellport area, to occupy in May. Mariscotti, Ext. 7289, 281-3008.

TAXPAYERS - Fed & State income taxes prepared in your home. GR5-8330.

BABY CARRIAGE - Rocking cradle & playpen; rocking chair; excel cond; inexpensive. Sheila, Ext. 7721.

ICE SKATES - Boy's size 5, in good or better cond. E.W. Anderson, Ext. 2835.

TO RENT - Studio or 3 rm apt, Commack area. Ext. 2720.

ELEC HEATER - Thermostat controlled, home use type. 732-9517.

OLD ELEC TRAINS - Any make, any cond, lg or sm, Lionel, Ives, American Flyer, etc, made before 1941. Andy, HR3-3077 days, Ext. 7642 nights.

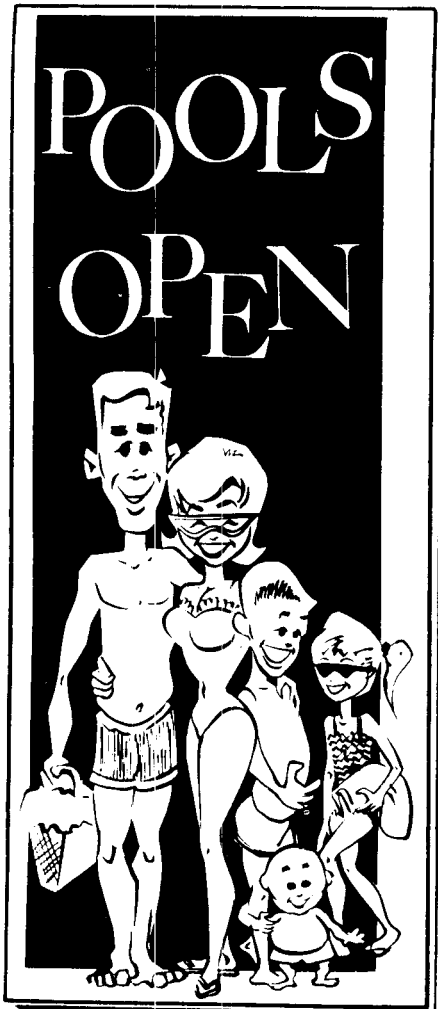
Lost & Found

LOST - Gold wedding ring, around AGS floor. Ext. 2419.

Carpools

DRIVER - For Bellport carpool. Bookless, Ext. 350.

INTERESTED IN JOINING OR FORMING - Carpool from Massapequa & vicinity, VW. Ext. 2942.



Swimming Pool Schedule

The new extended schedule of the Swimming Pool is now in effect.

Daily Monday through Friday

12:00 noon - 3:00 p.m.
5:00 p.m. - 9:30 p.m.

The Pool is closed on BNL holidays.

Classified Ad Policy

Deadline is 12 noon Friday for publication the following Thursday.

- The Brookhaven Bulletin classified section may be used only by active and retired Laboratory employees.
- All items for sale or rent must be the advertiser's property.
- Persons listing houses, apartments, or rooms for sale or rent, do so with the understanding that these must be available without regard to race, creed, color, or national origin.
- Ads for material acquired for resale in association with a full or part-time business cannot be accepted.
- Ads should be restricted to 20 words or less and typed

- or printed on the form provided, and must bear the employee's signature.
- Ads not carried because of space restrictions will be held for publication in the next issue.
- Ads are run only once and must be resubmitted if they are to be repeated.
- Firearms offered for sale or trade may not be brought on site.

- | | | |
|--|---|---|
| <input type="checkbox"/> For Sale: Auto & Auto Supplies | <input type="checkbox"/> For Sale: Houses | <input type="checkbox"/> Carpools |
| <input type="checkbox"/> For Sale: Boats & Marine Supplies | <input type="checkbox"/> For Rent | Check <input type="checkbox"/> the heading applying to your ad. |
| <input type="checkbox"/> For Sale: Miscellaneous | <input type="checkbox"/> Wanted | Print or type your ad in 20 words or less. |

If this ad concerns housing for sale or rent, such housing is available without regard to race, creed, color, or national origin.

Employee's Signature Life No. Ext.
Send to: Brookhaven Bulletin, 40 Brookhaven Avenue