



BROOKHAVEN BULLETIN

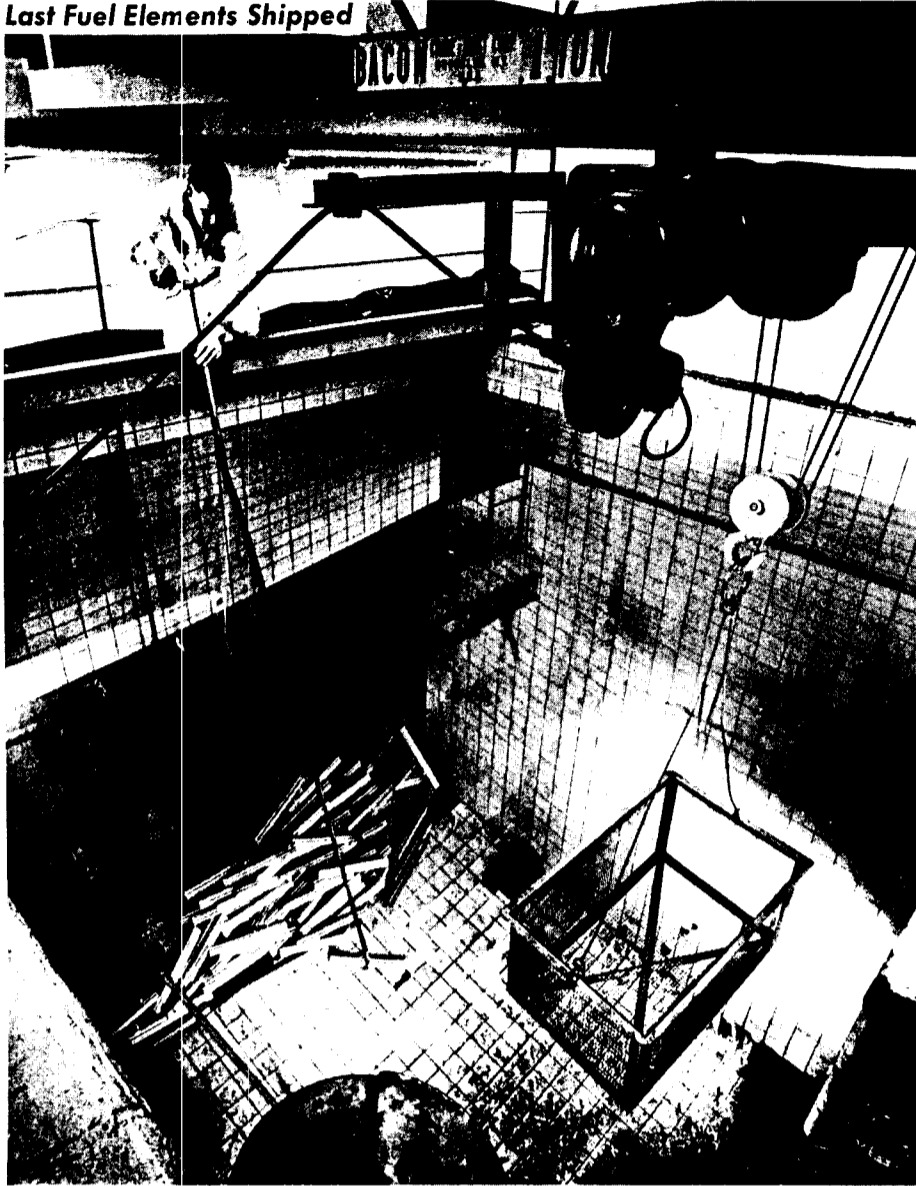
Published by the Brookhaven National Laboratory Public Relations Office



Volume 26 - Number 25

June 22, 1972

Last Fuel Elements Shipped



Reactor fuel elements under 20-feet of water in the canal beneath the graphite reactor. Fred Griswold uses remote-handling tools to place the elements into baskets before loading into shipping casks. Photos by Humphrey

Last Fuel Elements From First Reactor Leaving Lab Mon.

The last batch of fuel elements from the decommissioned Brookhaven Graphite Research Reactor will be shipped to the reprocessing plant at Savannah River next Monday, June 26.

Since decommissioning was authorized in May, 1970, the 4876 fuel elements have been removed from the reactor at regular intervals and shipped away for recovery of uranium metal.

Each cask contains 54 fuel elements and weighs approximately 18 tons. Two casks are carried on a special trailer truck which makes a weekly run from BNL to the Savannah River, South Carolina plant.

Loading of fuel elements for the first reactor designed for postwar research on atomic energy started almost 22 years ago on August 13, 1950. On August 22, nine days later, the reactor achieved criticality and operated essentially without trouble until it was put in a stand-by state on June 10, 1968.

Charles (Chuck) Osborne, who worked at and with the reactor since coming to BNL in November of 1946, has been in charge of the decommissioning.

Each of the serially-numbered fuel elements was removed from the "pile" in a set order, and stored in the water-filled canal until they were cool enough to be remotely placed into shipping casks.

While the element removal was in progress, experimental equipment was removed from the faces of the reactor, and openings were sealed or covered over with plastic.

Control rods have been sealed in the remaining graphite structure, and control room equipment has been disconnected and removed.

After the last element has been removed from the canal, the water will be emptied from it and the entire area will be cleaned and covered over.

"You can't help feeling very nostalgic while this work is underway," said Osborne, "I personally hope that the reactor can be declared a National Monument to memorialize all of the important research that has been accomplished during its twenty years of operation."

Environmental Seminar



Deputy Director George Vineyard is briefed on the goals of the State Subcommittee on Youth Education in Conservation by State Senator Bernard C. Smith, Chairman.

Environmental Seminar Here

"Father Island, Mother Bay," an ecological film about Long Island, began the environmental seminar held in Berkner Hall on Tuesday.

The seminar was one of 12 to be held throughout the state by the Temporary State Subcommittee on Youth Education in Conservation. The chairman is State Senator Bernard C. Smith, the first speaker at the seminar.

The subcommittee is a result of the State Environmental Education Plan, which saw the need for statewide education in environment for the general public and students.

The main reason for these statewide seminars is to find groups in each region to coordinate environmental education locally. Senator Smith said he is working under a federal grant and must report the results of these seminars to the legislature by March 13 of next year.

Educators, government officials, conservationists, industry representatives, and students all came together to discuss ways of getting total community involvement in environmental studies.

George Vineyard, Deputy Director of Brookhaven, told the group present of the many ecological research projects the Laboratory is conducting. Also attending the seminar was George Woodwell of the Biology Department, who is in charge of some of these projects.

Bloodmobile Here Next Week

On Thursday, June 29 and Friday, June 30, the gymnasium on Center Street will be crowded with hundreds of donors who have been scheduled to donate a pint of blood to BNL's Blood Program.

According to Alf Christoffersen, the program's coordinator, appointment cards have been mailed to all who have signed up previous to June 15th. Last minute appointments may still be made by calling either Christoffersen at Ext. 3322 or Monroe Petty at Ext. 2881.

All potential donors are reminded to eat regular meals before their appointments, but to avoid fatty foods.

Since the Blood Program went into operation last July, more than 350 pints have been withdrawn by employees or members of their families.

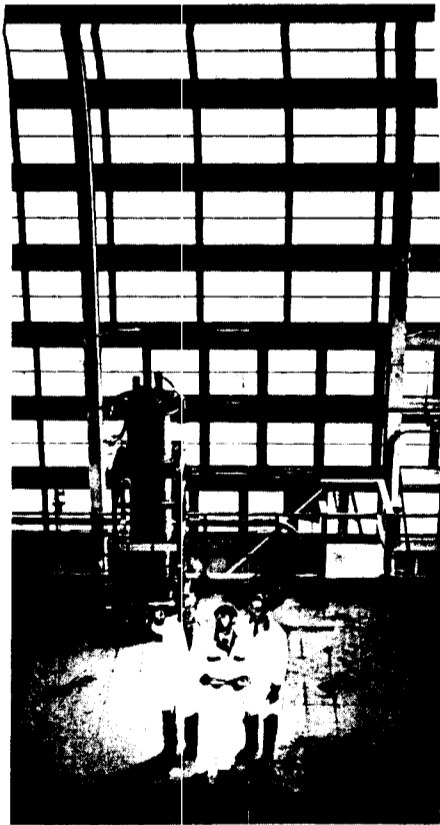
Appointments have been arranged to take donations at the rate of 30 pints every 15 minutes throughout the scheduled hours on both Thursday and Friday.

Union Negotiations

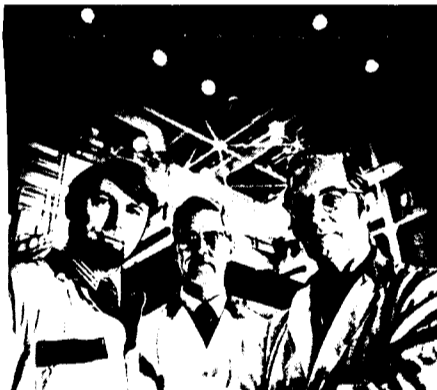
The Laboratory and the IBEW Union negotiating committees have been meeting since early May for the purpose of arriving at a labor agreement to replace the present one which expires June 30, 1972.

At the meeting on Thursday, June 15, the Union advised the Laboratory that they were requesting the assistance of the Federal Mediation and Conciliation Service.

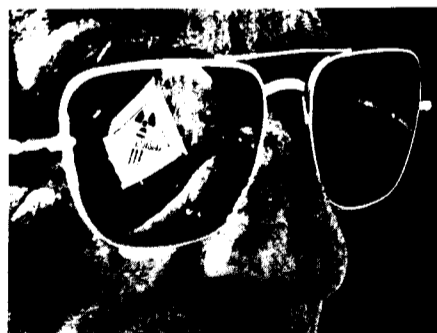
Commissioner Angelo Bottone of the FMCS has contacted both parties, and they met with him on Tuesday, June 20, at the Brookhaven Center.



Experimental floor of the reactor is emptied of equipment.



Mike Brooks, John Penney and Chuck Osborne watch as last fuel elements are loaded.



"Radioactive" sign is mirrored in glasses of driver as he prepares to drive away with load of fuel elements.



Loaded casks are placed on a special truck for shipment to the AEC's Savannah River Plant where uranium metal will be recovered and fission products will be removed.



Danny Oldham stands on top of reactor monitoring removal of fuel elements.

ISA Summer Study In Second Week

A series of discussions relevant to the physics of the ISA began the Isabelle Summer Study last week. Scientists from around the country and the world are here for three weeks to discuss the physics and machine design of a prospective intersecting storage accelerator (ISA) at the Lab.

Probably of most significance was the attention given to the idea of using the machine for weak interaction studies. S. Berman of SLAC discussed this in a talk Wednesday titled "Weak and Electromagnetic Interactions at Isabelle." The talk was referred to as "very useful" by J. Sandweiss. Sandweiss and N.P. Samios are in charge of strong interaction studies and weak interaction studies, respectively, at the Summer Study.

Discussions with scientists who have worked with the intersecting storage rings (ISR) at CERN in Switzerland was another highlight of the meetings. The basic concept of the ISR is similar to what is expected of the ISA here. The major difference is that particles will be accelerated in

ISA Summer Study



Harold Hahn (left) and Ralph Shutt, the organizers of the Isabelle Summer Study, discuss plans for the remaining two weeks of seminars.

the storage rings of the ISA while they are not accelerated in those of the ISR.

Next week the discussions will deal with the physics and machine design of the ISA.

BROOKHAVEN BULLETIN

Published Weekly for the Employees of
Brookhaven National Laboratory

CARL R. THIEN, Editor
CLAIRE LAMBERTI, Editorial Assistant

40 Brookhaven Ave. Upton, N.Y. 11973
Telephone 516 345-2345

NORBERT J. DERNBACH
Public Relations Officer

Special Event Turns A Profit

The Duke has come and gone, but his memory lingers on. The Ellington concert was received enthusiastically by the audience in both numbers attending, and in the standing ovation given to the performance.

The BERA Special Event Committee was heartened by the applause from 1486 hands clapping at the end of the two-hour concert. It had been previously announced that future special events would be dependent on support of the Ellington concert.

When the books were balanced it was found that the employees had indeed given the BERA Board the support it needed with a few dollars to spare.

The Committee will be holding its final meeting shortly and would like to have suggestions for the kind of special event to hold in the future. Would employees want concerts, dance ensembles, choral groups, vocalists, rock bands - even combinations are possible. Please send recommendations (with your name) to George Sabine in Personnel.

Remember the contest for past Special Events? The winner was Janice Berry of the Reactor Division in the HFBR.

Peppermint Lives On

Lovers of peppermint rejoice. The crisis that might have destroyed your beloved plant is over.

Verticillium, a fungus which causes destructive wilting in plants, was wreaking havoc with peppermint fields. The disease reached epidemic proportions.

Thanks to scientists in the Biology Department of Brookhaven National Laboratory the plants have been saved, as a result of 16 years of experimentation at the Lab. Over 100,000 peppermint roots were irradiated and tested in a verticillium-infested field between 1955 and 1959. In 1970 four healthy lineages of peppermint plants emerged.

It was reported that one of the four, Todd's Mitcham, had an odor and assay similar to the Black Mitcham commonly used.

The storm which arose from the fear of never again being able to have a Pep-O-Mint Lifesaver has now been calmed. Remember "the only fear is fear itself," so have another lifesaver.

Letters To The Editor

The following message was received by Blood Program Coordinator, Alf Christoffersen from one of BNL's retired employees now living in Florida. A copy of the reply follows.

Hi Chris!

Seeing your smiling face on the front page of the Bulletin reminded me I still have to sign up for membership in Mobile Home Owner's Association in order to get free blood. They won't take mine because it is rated "Tired Blood!"

C.D. Roselius

Dear Charlie:

Brookhaven National Laboratory belongs to an excellent blood program and, as a retiree, you, your spouse, and dependents are covered with an unlimited supply of free blood. Your only cost is the local processing fee. Should you need blood, simply contact the Personnel Services Office at the Lab, and a blood release form will be processed immediately. If there is an emergency, then tell the hospital that you are covered under BNL's affiliation with the Greater New York Blood Program, and let us process coverage after the fact. My only excuse for your not knowing about our plan is that we are only in our second year. Perhaps other retirees aren't aware either.

Alf P. Christoffersen

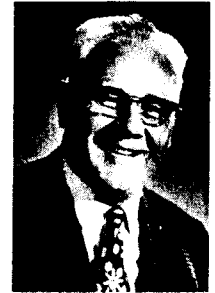
June Retirees



Edward M. Reams, an Electrician in Plant Engineering & Planning who has been with the Laboratory since 1959, will retire on June 30.



Thomas Papa, a Heavy Equipment Mechanic Operator in Plant Engineering & Planning, employed at Brookhaven since 1956, will retire at the end of this month.



Albert Manger, a Tool & Instrument Maker in Central Shops who has been at BNL since 1948, will retire on June 30.



Arnold H. Schroeder, a Technician in the Department of Applied Science who has worked at BNL since 1951, will retire on June 30.



Frederick Baumfalk, a Facilities Engineer in Plant Engineering & Planning who has been employed at BNL since 1957, will retire at the end of this month.

Hospitality News

The Hospitality Committee's next morning coffee will be on Tuesday, June 27, from 10 a.m. to noon, in the Recreation Building in the apartment area.

The Committee cordially invites you to join them in welcoming our summer visitors and hopes to see you there. Everyone is welcome - bring the children.

CREF Unit Values

1971			
January	\$41.37	February	\$41.57
March	43.14	April	45.23
May	43.81	June	43.58
July	41.24	August	44.01
September	43.85	October	41.84
November	42.38	December	46.21
1972			
January	\$48.27	February	\$50.49
March	51.36	April	51.80
		May	\$53.74

Holiday Food Service For On-Site Residents

The Tap Room at the Center will be open for normal beverage and snack service, Saturday, Sunday, Monday and Tuesday, July 1st through the 4th.

The Cafeteria Snack Bar Service will be available from 9 a.m. until 2 p.m. during the holidays and resume normal operations on Wednesday, July 5th.

The Vended Food Service in Building 912 will be in operation throughout the holidays.

Arrivals & Departures

Arrivals

Louis T. Bullock P.E.P.
Charlotte D. Long Fiscal
Peter N. Palamidis P.E.P.

Departures

Ronald L. Bell Photography



After giving a talk on weak interaction studies at Isabelle, Sam Berman (far right) of SLAC talks with (left to right) I. Muzinich of BNL and M. Strovink and S. Smith, both of Princeton University.

F.T. Miles To Head Engineering Division Of Applied Science

Dr. Frank T. Miles has assumed the duties of Head of the Engineering Division in the Department of Applied Science. He is taking over the work of Dr. Joseph Hendrie, who is on leave of absence while with the AEC in Washington.

Dr. Warren Winsche, Chairman of the Department of Applied Science, also announced that Dr. Kenneth C. Hoffman has been appointed Associate Head for Engineering Services and Systems Analysis.

Mr. Meyer Steinberg has been appointed Associated Head for Process Development in the Radiation Division, DAS. He will now be responsible for the coordination of the radiation engineering, radiation processing, concrete polymer and other process developments.

Dr. Philip Palmedo will join the office of the Chairman of the DAS as a Special Assistant for Energy Developments. Last year he became part of a study team formed by AUI to make proposals on energy assessment activities.

French Group Sponsors Feature Length Film

The French Group of BNL will sponsor the screening of "The Sleeping Car Murder" in Berkner Hall at 8 p.m. on June 26. The admission charge will be \$1.50.

This 1965 film, a suspense-filled murder mystery with many surprising plot twists, was directed by Costa Gavras, who later made "Z" and "The Confession." Featured in the film are Simone Signoret, Yves Montand, Jacques Perrin, and Jean-Louis Trintignant. Judith Crist put "The Sleeping Car Murder" on her list of the Ten Best of 1966, and Bosley Crowther (New York Times) wrote: "One of those French mystery films that makes you marvel at the flashy versatility of the detectives and the cinematographers of France....."

Summer Film Festival

Eight feature-length movies have been scheduled by BERA for showing on Friday evenings during the summer months. The films will be screened in Berkner Hall at 8:30 p.m. and admission prices will be \$1.00 for adults and 50¢ for those under 18. No season tickets will be sold.

The schedule is as follows:

July 7 - Zulu
July 14 - Petulia
July 21 - W.C. Fields Festival
July 28 - I Love You Alice B. Toklas
August 4 - Sweet Love, Bitter
(It Won't Rub Off, Baby)
August 11 - Night Of The Generals
August 18 - The Pit and The Pendulum
August 25 - Ship of Fools

IBEW Meets Tonight

Local 2230 IBEW will hold its regular monthly meeting tonight, Thursday, June 22, at 8 p.m. in the K of C Hall, Railroad Avenue, Patchogue. There will also be an afternoon meeting at 2 p.m. in the Union Office at 31 Oak Street, Patchogue for shift workers.

On the agenda will be regular business, a negotiations report and election results.

World of BNL

As reported last week, the World of BNL is broadcast over four stations instead of two. The subject this Sunday will be Youth Education in Conservation, with State Senator Bernard C. Smith as guest. He is Chairman of the Temporary Senate Subcommittee on Youth Education in Conservation, and chaired a seminar on that topic at BNL on Tuesday.

The times are as follows: at 8:15 a.m. over WBLI-FM (106.1), Patchogue; WRCM-FM (103.9), Riverhead; WHRF-AM (1570), Riverhead. At 11:15 p.m. over WGLI-AM (1290), Babylon.

Superconducting Power Line Being Developed At BNL

A project to design and ultimately build and install a half-mile of underground superconducting power transmission cable is getting underway at BNL. The single cable will be an integral part of the power supply system of the Laboratory and will be capable of handling its total power needs.

Such a system has many advantages for power transmission. For example, three 17-inch pipes, each carrying 3,000 MVA (megavolt amperes) in a superconducting cable, could supply the entire power needs of New York City. The superconducting cable currently envisaged by the Brookhaven scientists will weigh only two pounds per foot of length, compared to 16 pounds per foot for today's typical underground cable. On a weight for weight basis, a superconducting cable will carry 20 times more power than conventional cables of today.

The advantages of burying the cable underground include a tremendous improvement in the appearance of our visible environment, plus much greater reliability of service to home owners, industry, hospitals, etc., against storms and other disturbances.

The project is part of the National Science Foundation's program to support Research Applied to National Needs (RANN). Lab Director Maurice Goldhaber, in announcing the project, said that Brookhaven is receiving \$530,000 from the National Science Foundation for the first year of the project. It is expected that the completion of the demonstration cable will take at least six years, perhaps longer. The cost for a power company to buy and install an underground superconducting transmission cable system when it becomes commercially available is not known at this time. However, environmental, esthetic, and inherent problems of transmitting large amounts of power over long distances, particularly if huge energy producing centers are built, may force the eventual use of buried superconducting cables. Some areas of the country may need them as early as the 1980's.

According to Deputy Director George Vineyard, present-day cable technology permits use of underground cable only in very limited situations. Brookhaven scientists were asked a year ago by the National Science Foundation to conduct a study of new cable technology. The study concluded that most of the problems of placing standard transmission lines underground could be overcome with superconducting cables. The technological restrictions of standard lines on length of cable and heat loss to the soil are both eliminated, and there is no apparent limit to the amount of power that can be transmitted in this way.

Vineyard noted that superconduction is not without its own problems, but based on more than ten years of experience of Brookhaven National Laboratory in superconduction research, he did not foresee any problems that could not be overcome. He mentioned the successful development of superconducting devices under Atomic Energy Commission funding at Brookhaven, including the world's most powerful air core magnet which is installed in a 7-ft bubble chamber for high energy physics research. He also referred to a concept developed by Laboratory scientists to suspend mass transit vehicles capable of travelling 300 miles per hour with the use of superconducting magnets.

The superconducting power transmission cable will be cooled by helium to near absolute zero (459 degrees F below zero or minus 273 degrees Centigrade), which will flow through the pipes containing the cable. At that temperature, the cable material loses virtually all resistance to the flow of electrical energy. A refrigerator to cool and circulate the helium will have to be located every few miles along any completed transmission system.

Dr. Vineyard announced that the project will be headed by Eric Forsyth of the Accelerator Department.

Jet Tickets

At this writing 80% of the tickets have been sold. The Recreation Office still has a few tickets left. Call on extension 2873 for further information.

Summer Concert Series Starts Wednesday Eve

The Laurel Hill String Quartet will inaugurate the Summer Concert Series of the BERA Concert Committee. The concert will be presented on Wednesday, June 28, at 8:30 p.m. in Berkner Hall.

James A. de Tomasi, professor of chemistry at LIU's C.W. Post campus is the leader and founder of the Laurel Hill String Quartet. De Tomasi began violin studies at the age of 5 in Turin, Italy, and by the age of 10 had his first string quartet.

Dr. de Tomasi has had his own quartets in Italy, Germany, Switzerland, and the U.S. He is one of the founders and earliest members of the Huntington Symphony Orchestra and the Huntington Philharmonica. He is the founder and leader of the Laurel Hollow String Quartet.

Other members of the Quartet include Hiroko Nakahara (first violin); Louis Brown (second violin); and Adelaide Cassens (violin/cello). Wednesday's program will include works by Boccherini, Mozart, and Schubert.

Admission will be \$2.00 for adults, and on a trial basis, those under 18 will be admitted free. On July 6th, the Caen University Choir will appear, and on August 23 an all-Bach program will be presented.

Saturday Swimming In Summer Schedule

The swimming pool began its Summer Season on Monday, June 19. As a result of many requests arrangements have been made to add Saturday afternoons to the regular schedule - **On a Trial Basis.**

As you know, the income from admissions helps defray the pool's operating expenses and its schedule is dependent on your support. So if you like the Saturday idea let us know by your presence.

Season passes may be purchased at the Recreation Office (9:00 a.m. - 1:00 p.m.) or at the Pool Office during its open hours.

The following schedule of rates and times will be in effect for the Summer Season which begins on June 19th and continues through September 2nd.

Schedule	
Weekdays - Monday through Friday	12:00 noon - 1:30 p.m. Employees Only
	1:30 p.m. - 9:30 p.m.
Employees/Family/Visitors	
Saturdays - 12:00 noon - 5:00 p.m.	Employees/Family/Visitors
Rates	
Season Pass	
Employee or Family Member	\$10.00
Family (Same Household)	\$20.00
Daily Single Admission	
Employee or Family Member	50¢
Visitor	75¢

Gymnasium Closed

The gymnasium will be closed for all physical activities beginning Wednesday, June 28th at 1600 p.m. to prepare for the scheduled Bloodmobile Program on the 29th and 30th. It will reopen on Wednesday, July 5th at 1:00 p.m.

Girl Guides Honored



After being honored at a luncheon last Wednesday, BNL's "Girl Guides" who take touring groups around the Laboratory, posed for this picture in Berkner Hall. In front (left to right) are: Madeline Windsor, Georgia Irving, Jean Hamilton, Betsy Schumajda and Dolores Seay. Rear (left to right) are: Marguerite Stoekel, Carol Beckner, Linda Masem, Betty Pergan, Jacqueline Larrie, Frances Scesny, Kay Hunt, and Arden Neber.

25 Years of Service



Pictured above are members of the Plant Protection and Security Division who complete 25 years of service to the Laboratory in 1972. Front row, L-R: Police Captain William Stafford, Patrolman William Pollack, Patrolman Andrew Greener, Patrolman Frank Remiszewski. Center row: Mrs. Joan Simicek. Rear row, L-R: Firefighter James Farrell, Firefighter Alfred Teixeira, Firefighter Joseph Rhodes, Firefighter Stephen Takats, Firefighter Francis Painter, Police Chief Adam Paskiewicz.

Golf Tournament Tickets on Sale

The third annual American Cancer Society's (Suffolk Division) Pinter Tournament of Stars will be held this year at the all new Colonic Hill Country Club on July 3.

Come on out and see Joe Namath, Rick Barry, Whitey Ford, Rocky Graziano, Frank Gifford, Forest Brooks, Bob Tucker, Don Maynard, Cazzie Russel, Dave Debusschere, and other celebrities team up with golf pros Chi Chi Rodriguez, J.C. Snead, Jim Jamieson, Tommy Shaw, Hawk Harrelson, Jim Wright, and over 40 others to provide a great day of golf and help fight cancer with money for both research and patient care. It is the biggest tournament on Long Island all year.

Tickets are available at the BERA office in Personnel, and are priced at only \$8.00 each.

Record Hops Start Thursday - June 22

Once again the Recreation Office has scheduled record hops on Thursdays throughout the summer.

They will be held at the Recreation Building from 8:30 p.m. to 12:00 p.m. Admission is free! Refreshments (beer, soda) will be available for purchase. BERA has on hand a selection of 8 track tapes. If you'd like bring your own.

This is your affair - its success or demise is up to you. The music, hall, refreshments and dance floor are there. You're the ingredient necessary to complete the package. Come alone or bring your friend(s)! Dress comfortably.

Tennis Clinic

An enthusiastic response to last week's announcement brought out 36 registrants in the first two days. The maximum number was reached quickly thereafter, and registration has been closed.

The first session of the tennis clinic gets underway this **Saturday, June 24, at 10:00 a.m.** All registrants should report at that time to the number one tennis court where Peter Kortman and Tom Koetzle will introduce you to the other instructors and begin the 5-week clinic.

In case of rain on a scheduled Saturday, the session will be rescheduled for the next day, Sunday, at the same time. In case of doubt as to the weather, phone 345-3112.

Participants in the clinic are reminded to wear tennis shoes or sneakers on the courts. Clothing should be comfortable. Wear apparel that will not interfere with a free swing and which will allow you to run with a full stride. Traditional tennis whites are ideal, but not necessary.

Balls will be supplied, but you must bring a tennis racquet; only a few extra racquets will be available for use during the initial session.

Tennis Notice

All players should note that the courts will be out of service for general play and will be reserved for the use of the Tennis Clinic on **Saturday mornings from June 24 through July 22.**

Cafeteria Menu

Week Ending June 29, 1972

Friday, June 23	
Clam & Celery Bisque	
Fisherman's Cakes & French Fries	.95
Roast Leg of Lamb w/Mint Jelly & 1 Veg.	.95
Broiled Halibut w/Carleton Butter & 1 Veg.	.95
Monday, June 26	
Tomato Soup	
Roast Fresh Ham & 1 Veg.	.90
Chicken Patties w/Giblet Gravy, Currant Jelly & 1 Veg.	.90
Western Omelet w/French Fries	.80
Tuesday, June 27	
Vegetable Soup	
Grilled Ham, Sausage & Pineapple w/1 Veg.	.90
Creamed Chicken w/Mushrooms on Noodles	.90
Sauerbraten w/Potato Pancakes	.90
Wednesday, June 28	
Yankee Bean Soup	
Baked Beef Loaf w/Gravy & 1 Veg.	.85
Shrimp Chow Mein on Rice w/Crisp Noodles	.90
Polish Kielbasy w/Mashed Potatoes & Sauerkraut	.80
Thursday, June 29	
Beef Barley Broth	
Beef Hash w/Brown Gravy & 1 Veg.	.80
Baked Lasagna w/Meat Sauce & 1 Veg.	.90
Broiled Chicken Livers w/Bacon Strips & 1 Veg.	.85

Softball News

Jim Petro

Brookhaven League

Dirty Sox 11 - Metallurgy 7
Blue Jays 14 - S&M 2

The strong breeze generated by a swinging third strike in the 1st inning carried the Dirty Sox (1-3) to their first win of the season. Jim Curto led the Dirty Sox with a HR & triple. Metallurgy (1-3) had some great play at 3rd base. Blue Jays (3-1) combined defense with two big innings to down S&M (1-3). The Jays batted around in the 3rd and 6th innings scoring all their runs. Ed Meier has a HR and H. Marshall a bases loaded triple. "Doc" Carsten reported to have had a triple that was run out in slow motion. League leading Old Timers (4-0) had a bye.

University League

Saints 8 - Gotchas 7
Oh Kays 25 - Odd Couples 17

Audrey Blake's fine pitching led the Saints (2-2) to a close win over the Gotchas (1-3). Frank Short provided good defense in center field while Dick Lingg provided the offense. Gotchas rallied for 3 runs in the top of the 7th inning but came up short as Audrey Blake walked George Morgan with the tying and winning runs on base to get the 3rd out on the next girl batter. Oh Kays (3-1) avenged their only loss of the season by beating the Odd Couples (2-2). John Crump had a grand slam HR with Roland Green (HR) and Ruth Faine (Triple) helping the offense. Jeannie Hamilton and Ruby Burwell sparked the defense.

National League

Bio Meds 18 - Kumquats 6
Circuits 10 - Bubble Boys 5

Bio Meds (1-3) finally got some hitting for their first win of the season. The defense looks like it could use some tightening up now. Steve Eiseman homered and Bob Kowalski had 5 for 5 for the Kumquats (1-3). Circuits (3-1) got 4 hit pitching for 6 innings plus a triple from J. Schmidt to down the Bubble Boys (1-3). Good defense by F. Haibon plus some hitting by R. Machnowski helped in the win. League leading AMD (4-0) had the bye this week.

Laboratory League

EAO 28 - Converts 13
Six Pax 21 - Charlie Browns 7

EAO (4-1) scored 14 runs in the first inning and went on to rout the Converts (0-5). Six home runs were hit by EAO with E. Valli (2), H. Gassner (2), A. Kriesberg and Joe Klemish doing the damage. Six Pax (4-1) were led by B. Vignato (5 for 5 with 2 HR's) and Jack Baer (5 for 6) to overwhelm the Charlie Browns (2-3).

70 PLYMOUTH GTX - 4 spd console, 440-6 pack, 400 hp, posi rear, am/fm, p/disc brakes, 15,000 orig mi. \$2195. J. Pontieri, 475-9430.

J-78/8.85x14 NEW TIRE - Mobil Premier polyester cord w/w 4 ply. \$30. Ext. 4689, 289-1754.

72 HARLEY DAVIDSON RAPIDO - Like new. \$450. John, Ext. 3353.

½ TON FORD PICKUP - 69 eng, auto trans, good tires, new muff, brakes, kingpin, water pump, runs well. \$650. Saxon, Ext. 3435.

65 CORVAIR - 140 hp eng, running cond. \$75. 363-6940 eves.

PARTS FOR 71 CHEVY 307 - Intake manifold, \$30; exhaust manifolds, \$25; carb, \$15; water pump, \$10. Otto, Ext. 2350, 363-6439.

2-14" RIMS W/TIRES - 5 holes. \$7. O. Booker, Ext. 4808.

52 MG-TD - 475-6288.

2 SNOW TIRES - 6.50x13 Goodyear Vytacord, ¾ tread w/5 hole rims. \$40. Hirzel, Ext. 4277.

64 FORD COUNTRY SQUIRE - Auto trans, V8, ps/pb, good cond. \$275. Bob, Ext. 4490.

67 FORD RANCH WAGON - 390 hp V8, auto trans, 76,000 mi, new tires & batt, excel cond. Ext. 4329, 744-2269.

TIRES - 1-6.50x16, \$8; 1-7.60x15, \$6; 1-8.85x15 (snow), \$6.50; 1-8.20x15, \$6. Whitey, Ext. 2907.

69 AUTO VW BUG, Blue, excel cond in & out, charming personality, 55,000 mi. Asking \$1200. Robin, 286-8968.

TRAILER HITCH - Sears, for 67-70 Chevy, compl w/ 1 ½" ball. \$7. 286-3928.

67 PLYMOUTH VALIANT - Green, 2 dr, 6 cyl, std trans, 62,000 mi. Asking \$580. 473-3019.

4 FORD MUSTANG HUB CAPS - \$2 ea. Ext. 4028.

64 MGB - Green, wires, radio reliable but a bit tired. \$400 or best offer. Charlie, Ext. 3396.

VOLVO SHOP MANUAL - For older models. Cost \$30, make offer. Doris, Ext. 2441/2445.

71 SUZUKI MOTORCYCLE - 500 cc, 220 mi, excel cond. \$850. 475-4557.

65 V W - New tires, good cond, 59,000 mi. Asking \$495. Stan, Ext. 3284, 286-1062.

71 PINTO RUNABOUT - 8700 mi, air cond, 4 spd. \$1550. Stan, Ext. 3284, 286-1062.

66 ROVER 2000 - Runs & rides well, needs body work, best offer. Mike, Ext. 2016, or Ext. 3236 eves.

68 PLYMOUTH VALIANT - Green, 4 dr, 6 cyl, manual shift, r/h, good cond. \$700. Arnie, Ext. 2449.

TRANSISTOR IGNITION SYSTEM - \$10. F. Rumph, Ext. 4581.

64 PONTIAC GTO CONV - 4 spd, posi, r/h, maroon/blk top. \$400. Tim, 878-2197.

64 BUICK CONV - 64,000 mi, needs eng or possibly can be repaired, Wildcat model. \$75. 732-8818.

63 FORD GALAXIE - V8, auto trans, good running cond. Ext. 2320, 475-9083 after 6.

63 RAMBLER STATION WAGON - Auto trans, rec seats, very good cond, 66,000 mi. Drucker, Ext.3432, 473-1620.

59 V W BUG - 63 eng, nice inside, reliable, \$150; also 36 hp eng for parts, excel heads, good 6V gen. Johnson, 286-8353.

68 ROVER 2000 TC - 2 dr, factory air, AM-FM-SW-LW radio, new brakes, master cyl, very good cond. \$1350. Rick, Ext. 3979.

TRAILER HITCH - Class I, will fit 66-69 Comet, Fairlane station wagon. \$6. Ed, Ext. 2023, EM3-6940.

67 PONTIAC CATALINA - Auto trans, air cond, ps/pb. Ext. 3053, 286-0612.

Boats & Marine Supplies

27' CHRIS CRAFT SEASTRAKE - Excel cond, extras, fly bridge, free docking. \$4800. R. Meyer, Ext. 4615, LT9-5757.

28 HP EVINRUDE 1963 - Excel cond, \$225; clam rake, 18 tooth Butera, overboard handle & 24' handle, \$50. D. Tuttle, 878-2197.

17' SAILBOAT - Cheap, must sell, Ext. 4390.

5 HP MERC OUTBOARD - \$50. 744-0548 after 6.

BOATING/FISHING EQUIPMENT - 7 ½ lb Danforth anchor; fishing poles/reels for trolling; spare boat trailer-tire & wheel; misc equipment cheap. B. Streeter, 744-9832 weekends only.

10' FIBERGLASS SAILING, ROWING DINGHY - 3 ½' beam, sturdy, stable, excel cond, fine for children. \$200. Ext. 4643.

8' SAILING PRAM - Oars & anchor. \$90. 928-0466.

20' CLAM GARVEY 1968 - 85 hp Johnson elec, steering & controls, dog house, in water, will demonstrate. \$900. Otto, Ext. 2350, 363-6439 after 5.

1 PR RISERS - For 185 Flagship. \$100. Otto, Ext. 2350, 363-6439.

167" GLASSPAR CUTLASS TRI-HULL - 55 hp Chrysler elec start, 16' TeeNee, full canvas, compl access, like new. 473-8784 after 5.

70 CHRYSLER MARINE ENG - W/2:1 reduction, 215 hp, LH eng. \$350. John, Ext. 4666, 588-0619 after 6.

KAYAK - Paddle, new, 2-bladed, white & dk laminated wood, "Beaver." \$5. Ext. 3126.

22" CLAM RAKE - W/36' ext poles & kull box. \$45. John, Ext. 3353.

22' RESKY SKIFF - Wood hull, Gray eng, inboard. I. Steele, Ext. 3415.

Miscellaneous

ADMIRAL TV - Portable, old but works, w/stand. \$10. 744-0548 after 6.

UTILITY TRAILER - 1967 Allstate, 4'x5' box, all required lights, spare wheel tire, used 3 times. \$100. Frank, Ext. 4659.

CAMP STOVE - 2 burner Coleman, \$5; 2 folding camp cots, can be set up as bunk or sep, ideal for tent camping or spare beds, \$15/pr. Frank, Ext. 4659.

KYOWA MICROSCOPE - Model KHS-2, 4 objectives, 3 eyepieces, graduated coaxial stage, Koalite lamp, Abbe condenser, wood case, slides. \$175. Saxon, Ext. 3435.

NORWEGIAN ELKHOUND PUPPIES - AKC, champion sired, good w/children. Female \$135, male \$150. 744-6211 eves.

PANASONIC STEREO - Model RD 7673, incl am/fm receiver, turnable & speakers, excel cond. 289-5539.

DOG SKY KENNEL - Med, \$10; silver flute, Italy, \$60. Rolfe, Ext. 3986 days, Ext. 3017 nights.

ANTIQUA SEWING MACHINE - \$50. Izzy, Ext. 3620.

6' LONG BASE KITCHEN CABINETS - W/sink & faucet, also matching top cabinet. Best offer. R. Meyer, Ext. 4615, LT9-5757.

TRAVERSE ROD - W/glass curtain rod, triple width. \$4. 744-0548 after 6.

WEBCOR AM/FM PORTABLE RADIO - 110 v AC, 12v DC & C batteries. \$15. 744-0548 after 6.

MOD CEILING LIGHT FIXTURE - 3 balls, gold & white. \$20. Ext. 4156.

MELNOR TRAVELLING SPRINKLER - Used 1 season, auto shut off valve. \$18. Ext. 4156.

DBL BED - Maple finish, box spring & matt. \$15. 744-0548 after 6.

B^b CLARINET - Excel cond, 6 mos old. \$95. 281-5827.

DEHUMIDIFIER - Westinghouse, 20 pt cap, used 1 summer. \$60. 928-0466.

SIAMESE KITTENS - Males-1 blue, 1 seal, female blue, avail now. G. Irving, Ext. 2914.

OIL BURNER - .75-1.50 gph. \$20. Otto, Ext. 2350, 363-6439.

MASTERWORKS TAPE RECORDER - Monaural, 25 watts, external speaker & 2 tapes. \$65. D. Tuttle, 878-2197.

3 BRIDESMAID DRESSES - Worn once, empire style, sizes 7-9-15, pink, each pretty. Ext. 4046 after 5.

GUITAR - Gretsch elec hollow body, very old; Fender telecaster elec guitar, pre-Columbia model. Rich, Ext. 4145.

ANTIQUA GERMAN GRANDFATHER CLOCK - Excel cond. \$500/best offer. 475-5949.

MOD SOFA & MATCHING CHAIR - Almost new, still looks it! Green. Asking \$150. Sauter, 727-0204.

SIMMONS TWIN BED SET - Blk metal, will sell separately, or 1 or 2 twin beds in trade for colonial twin bed. Olsen, 286-0376.

DRAFTING TABLE - 36x24, \$5; whiteprint machine, 18" car. \$20; rollaway cot & matt. \$4. 475-9428.

3 ANTIQUA TRUNKS - \$20 ea; spinet desk & chair, \$50; rink roller skates, ladies 9, men's 8 ½, w/case, \$10 ea. 475-9428.

LAWN MOWER - Craftsman 4 cycle 2.25 hp, self propelled, 18" reel mower, good cond. \$25. Ed, Ext. 2023, EM3-6940.

TRICYCLE - \$3; counter top broiler, \$5. Barbara, 286-8633.

TV - Old GE console, works. \$10. 744-3744.

36" RIDE-ON MOWER - Good cond. 653-4571 after 5:30.

CLOTHING RACK - Steel, on wheels, expands up to 8', extra space for shoes, hats or whatever. \$10. Y. Flack, Ext. 3316/3318, 698-1362 after 6.

JAPANESE RED MAPLES - 18"-2' high, top quality, already potted & treated, just dig & plant. \$11.50 value selling for \$7 ea. Y. Flack, Ext. 3316/3318, 698-1362 after 6.

PORTABLE BAR - Like new, used once, storage space mirror back, take on picnics, trips or home use. \$25. Ext. 3316/3318, 398-1362 after 6.

ADMIRAL COLOR TV - Lg model, newly serviced, \$75; Philco TV, old but works, \$10. Ext. 4329.

BINOCULARS - 10x50 Omega w/leather case. \$17. Ext. 3126.

SINGER SEWING MACHINE - Portable, excel cond, w/zig-zag attachment. \$30. Ext. 4329.

WEDDING GOWN - Off white, ¾ sleeves, A-line, lace top w/peau de soie skirt & train, slip incl, size 10, excel cond. \$50. 727-2939.

BEAGLE PUPS - Female, 8 wks old. \$10 ea. 727-6541 after 5:30.

45" ROUND TEAK DIN TABLE - W/pads, opens to 83", 6 matching chairs. \$150. 286-2265.

FRIGIDAIRE REFRIG - 12 cu ft, old but in good cond, w/across the top freezer. \$25, you take it. Al, 273-5574 after 5:30.

STEREO TAPE DECK - Viking model 88RMQ, 4 track, built-in preamps, makes top quality tapes, perf cond. \$150. Walter, Ext. 2449.

AM SHORTWAVE TABLE RADIO - Lafayette HA-600, 5 bands from 0.15-30 MHz, bandspread, BFO, S-meter, perf cond. Cost \$100, price \$75. Walter, Ext. 2449.

TELEPHOTO LENS - 200 mm auto Vivitar F 3.5 for Nikon mount, perf cond. \$60. Walter, Ext. 2449.

SANDER - Sears Craftsman dual motion, 4 ½x11 pad size, hardly used. \$30. Frank, Ext. 4402.

MIRROR - 33"x46" w/4" pine frame. \$20. Ext. 3460, 929-4631.

9' SURFBOARD - \$20. 924-3967, 924-8486.

COMPL ORGAN MUSIC OF BACH - Unplayed, make offer. Mike, Ext. 2016, Ext. 3236 eves.

FLATWARE SERVICE FOR 12 - Sterling silver, simple design by Marthinsen of Norway. \$350. 286-2265.

8 TRACK STEREO TAPE DECK - New. \$30. W. Lundgren, Ext. 4280, 585-3794.

69 SILVER EAGLE 19' TRAVEL TRAILER - Good cond, sleeps 6, fully equipped. \$2400. 281-8081 after 6.

TROMBONE - Bundy, used 1 yr, good student horn. \$79. Wall, Ext. 4267.

Real Estate

Real Estate advertised for sale or rent is available without regard for the race, color, creed or national origin of the applicant.

For Sale

PT JEFF VILLAGE - Mint cond, 5 prs old, 2 story colonial, 4 bedrms, 2 ½ baths, paneled den w/ fireplace, eat-in kitchen, din rm, liv rm, low taxes, ¼ acre wooded lot. Priced low, \$40's. Ext. 4781, 928-1344.

CENTER MORICHES - 2 bedrm ranch w/carport, full bsmt, deeded beach rts. \$23,000. 929-4631.

E. ISLIP - L'ant elbow room, privacy? Spacious 6 rm ranch, alt garage, util rm, screened patio on 0.82 acre south of Montauk in prime area, fireplace, w/w, many extras. 581-7190 after 6.

CENTER MORICHES - ½ acre corner wooded plot, 1 block to beach & boat launching. W. Lundgren, Ext. 4280, 585-3794.

PATCHOGUE - 2 bedrm expandable cape, 70x120, low taxes, city water & gas, appliances & pool. Excel buy at \$24,990. 475-2557.

WADING RIVER - Lg 4 bedrm home overlooking Sound, 2 car garage, paneled liv & fam rms w/fireplace, 929-6132.

For Rent

FURN 4 BEDRM RANCH - Air cond, all appliances, fenced yard near SUNY. E. Friedland, 751-5139.

Wanted

FREEZER - In good working cond, reasonable. Laura, Ext. 3995.

JOB - 14 yr old girl wants job as babysitter-mother's helper for month of July, trans to Lab provided. Rustad, Ext. 2528, HR3-1727.

BOAT TRAILER - For 18' outboard, less than \$100 if possible. Les, Ext. 2944.

PHOTOGRAPHIC MAGAZINE - Back issues, published by Petersen Publishing Co., Calif. Rich, Ext. 4145.

SINGLE BED - In good shape, to be used by sm boy. 289-5253.

REAR SEAT - For 67 Ford wagon. O. Booker, Ext. 4808.

V W RIMS - 4 lugs, for Beetle, reasonable. Joyce, Ext. 2907.

TREE OR POLE CLIMBERS - For strapping on over boots. Ext. 4745.

HOME - For male Labrador, gentle. 732-5775 after 4.

UPRIGHT FREEZER - Reasonable. Rosalie, Ext. 2463.

811A TUBES! - Rolf, Ext. 4028.

APT/EFFICIENCY STILL NEEDED - Single girl, will share. Barbara, Ext. 2544, 928-1243.

HOMES - For 6 kittens, 6-8 wks, wide assortment of colors. Alina, Ext. 3619, 281-7547.

SUMMER POSITION AS MOTHER'S HELPER - Reliable high school girl, 17 yrs old, avail 6/26. Janet, 286-1290.

BACH, BYRD, BAEZ? - If one of these is your style & you play an instrument or sing, call 3400 & discover the summer music program.

Carpools

RIDE WANTED - Or will form carpool, near Sunrise, Oakdale. Frank, Ext. 2333.

Services

TREE REMOVAL & CHAIN SAW WORK - Also light hauling, free estimates. Ken, 289-8212 eves.

OAK FIREPLACE LOGS - Custom cut, split, delivered & stacked, well seasoned. Ken, 289-8212 eves.

CHARTER FISHING - Out of E. Hampton. John, Ext. 4666, 588-0619.

COUPLES OR GROUPS TO 6 - Evening cruises w/ licensed captain out of E. Hampton, dinner res avail. John, Ext. 4666, 588-0619.

CHEMICAL FOR CEISSPOOL - We guarantee for \$25 you will be as happy with results as with expensive pumping. 289-0565.

PLANNING A VACATION BY AIR OR SEA? - Call Lee, 472-0658 after 6.

YARD SALE - Moving must sell antiques, furn, bric-a-brac, unidentified, Sat 6/24, 10 a.m., Montauk Hwy, E. Moriches, 1st house E. of light. Jean, Ext. 3298.

Classified Advertisements

Employment Notices

The BROOKHAVEN BULLETIN each week will list job openings which have come to our attention and may be of interest to Lab employees. Each listing will be repeated (if still available) only once. For further information, please contact Employment Supervisor, Ext. 2879 or 2882.

COMPUTER OPERATOR - Shift Assignment. Applied Mathematics Department.

SCANNER I - Temporary. Physics Department.

Autos & Auto Supplies

DUNE BUGGY TIRES - Set of 4 w/15" V W rims, considerable tread remaining. 289-5539.

64 V W - Sunroof, good rubber, runs well, 85,000 mi. \$300. 744-1545.

Classified Ad Policy

Deadline is 12 noon Friday for publication the following week.

1. The Brookhaven Bulletin's classified section may be used only by active and retired Laboratory employees.

2. All items for sale or rent must be the advertiser's property.

3. Ads for material acquired for resale in association with a full or part-time business cannot be accepted.

4. Firearms offered for sale or trade may not be brought on site.

5. Ads not carried because of space restrictions will be held for publication in the next issue.

6. Ads are run only once and must be resubmitted if they are to be repeated.

7. Ads should be restricted to 20 words or less and typed or printed on the form provided, and must bear the employees signature.

For Sale: Auto & Auto Supplies
 For Sale: Boats & Marine Supplies
 For Sale: Miscellaneous

Wanted
 Carpools
 Lost & Found

Check the heading applying to your ad.
Print or type your ad in 20 words or less.

Ads concerning property for sale or rent cannot be accepted on this form. Special Real Estate Ad forms are available at the Office of the Brookhaven Bulletin, Room 112, 40 Brookhaven Avenue.

Employee's Signature: _____ Life No. _____ Ext. _____

Send to: Brookhaven Bulletin, 40 Brookhaven Avenue