



## Fourth International Magnet Technology Conference Next Week

A four-day Conference on Magnet Technology will begin next Tuesday in Berkner Hall. About 250 visitors are expected from the United States, Canada, Europe, Japan, and the Soviet Union. Subjects to be discussed will include the design and construction of conventional and superconducting magnets, computations of magnetic field patterns and measurement of magnetic fields.

This Conference will be the fourth in a series of which the first was held at Stanford, the second in Oxford, and the third in Hamburg. The present Conference was organized by the Accelerator Department under the direction of John P. Blewett and John J. Grisoli.

The Conference is being sponsored by Brookhaven National Laboratory, the Institute of Electrical and Electronic Engineers, the International Union of Pure and Applied Physics, and the U.S. Atomic Energy Commission.

## Chess Club Draws

An enthusiastic group of 23 chess players turned out for the first meeting of the BNL Chess Club last Thursday. The preliminary plans of the club were previewed, with those attending asked to consider ideas and prepare for the formal meeting set tentatively for September 21.

Tonight (Thursday) there will be an informal meeting at 5:30 in the Recreation Building in the Apartment Area. This will be a "get acquainted" and chess playing evening. Those who can, please bring chess sets. There will be many new and different opponents to play, or just drop by to see what the Chess Club is all about.

Instruction is available for beginners, so don't use that as an excuse. For further information, call G. Malcolm, Ext. 3298 or T. Jesaitis, Ext. 3297, or come to the Recreation Building at 5:30.

## New Food Service Hours

The Fall-Winter schedule for the Cafeteria and the Center will be effective Friday, September 22. After that date, the Cafeteria will close at 6:30 p.m. on normal working days, and the Center Club Tap Room will be closed on Saturdays.

The schedules are in the back cover of the BNL Telephone Directory for your convenience.

## Be An Expert Skipper In Free USPS Classes

Enroll now in the next U.S. Power Squadron class for more fun from safe boating.

Expert skippers in your area volunteer to teach you, free of charge, the boating skills you must possess for safety on the water.

This free course covers the following subjects in approximately 12 evening lectures at 2 hours each.

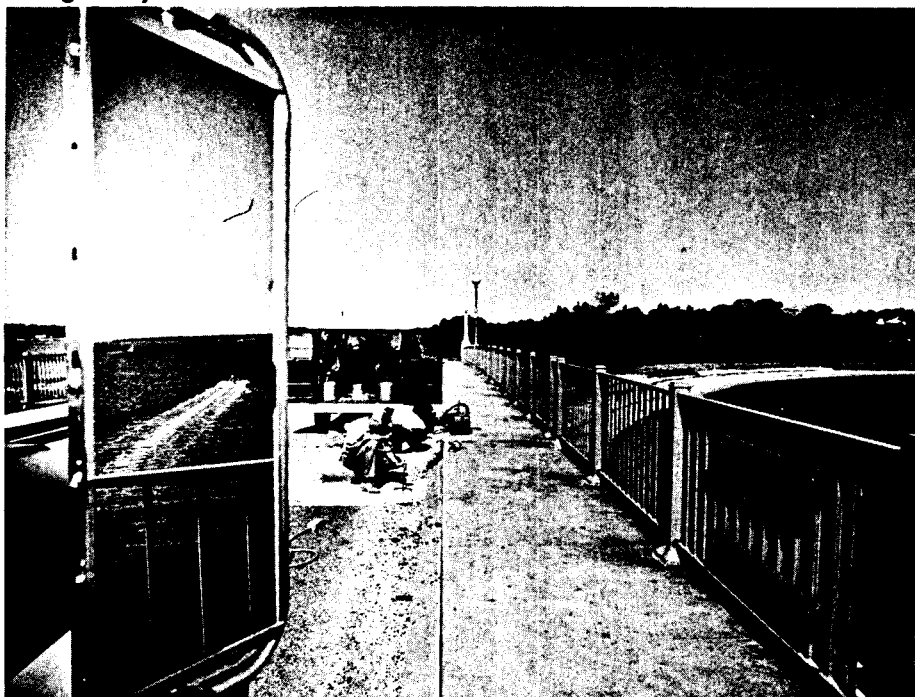
- Handling under Normal Conditions
- Handling under Adverse Conditions
- Seamanship and Common Emergencies
- Rules of the Road
- Aids to Navigation
- Compass and Chart Familiarization
- Running Lights and Equipment
- Boat Trailing
- Mariners Compass and Piloting

Squadrons holding classes within the environment of the Laboratory are the following:

**Patchogue Bay** - Mondays at 8:00 p.m., beginning September 11; Patchogue Middle School, Saxton Street, Patchogue.

**Oldfield Point** - Tuesdays at 8:00 p.m., beginning September 12; Newfield High School, Centereach. Wednesdays at 8:00 p.m., beginning September 13; Earl Vandemullen High School, Port Jefferson.

## Bridge Anyone?



These Brookhaven Lab employees are repairing the bridge between Sag Harbor and North Haven as part of an experiment being conducted by the Radiation Division of the Department of Applied Science. For more pictures see page 2.

## Sag Harbor Bridge Now Repaired With Concrete Polymer

Brookhaven employees who travelled out to Sag Harbor and on to North Haven this summer might have been surprised to see a Lab truck parked in the middle of the bridge.

A closer look would have revealed several members of the Department of Applied Science closely examining some large pot holes in the bridge decking.

The Lab truck and men were there at the invitation of highway officials to demonstrate repair techniques on the bridge roadway using concrete polymer materials.

A team headed by Larry Kukacka and including Tony Romano, Jules Varela, Joe Fedelem and Hank Ruge have completed a series of experiments in repairing the deteriorated bridge decking of the Sag Harbor-North Haven Bridge.

As an outgrowth of the Concrete Polymer Materials Development Program which has been underway for the past several years in the Radiation Division of the Department of Applied Science, a project has been instituted to repair deteriorated concrete by a monomer impregnation technique. The work is being supported by the Federal Highway Administration of the U.S. Department of Transportation.

It has been estimated that approximately 100,000 reinforced concrete bridges are in need of repair in the U.S., at an enormous cost. This deterioration is due to alternating freezing and thawing weather conditions which causes concrete to crack and deteriorate. Another cause is the use of salt solutions on highways to clear ice and snow. The chloride permeates the open cell structure and attacks the steel reinforcing bars. This action forms acid and the concrete then becomes rapidly attacked. The original concrete becomes a heap of rubble, and the bridge begins to lose strength and starts to sag. If deterioration is allowed to progress the bridge is finally condemned and a new bridge must be constructed.

The work on the concrete-polymer program has indicated that by impregnating the deteriorated concrete with a monomer and polymerizing the monomer, the deteriorated concrete can be reconstructed. With polymer acting as a binder, the strength and durability of the concrete can be restored and the lifetime of the bridge significantly increased.

Last September, a team consisting of Meyer Steinberg, Peter Colombo, and Gerry Farber performed some initial tests on a concrete bridge in Tonganoxi, Kansas on Interstate Highway 80, approximately 50 miles west of Kansas City.

First the 2" asphalt overlay was removed, and mixtures of polyester-styrene were "ponded" over the punky concrete. The liquid resin contained a catalyst and promoter and the polymer was allowed to cure or polymerize in place. Finally, an overlay of polymer concrete was trowelled over the repaired deteriorated concrete. In half an hour a roadworker was able to bounce a sledge hammer on the hardened polymerized road surface.

Initial experiments were carried out very crudely in a short period of time with the BNL crew mixing chemicals in paint cans and shot glasses, provided by the road crew. The logistics of delivery of chemicals was also an interesting scheduling problem while working on the bridge with trailer trucks whizzing by at 70 mph.

## Camera Club Meeting

The BNL Camera Club will hold the first meeting of the new season on Tuesday, September 19, in the Recreation Building at 8:00 p.m.

To begin the new year, we will present a Kodak program entitled "Adventures in Outdoor Color Slides." The program demonstrates techniques of outdoor color photography using examples by Kodak's best photographers, and includes helpful hints concerning technique and composition. Everybody is welcome.

## Ninth Semester Program Starts

Seven students from colleges in Texas, Oklahoma and Mississippi have arrived at Brookhaven to start a semester of research and study under the Brookhaven Semester Program.

The two girls and five boys who make up the current student body have gone through a week of orientation and assignment and started classes on Monday morning.

From Jarvis Christian College in Texas are: L.D. Dornell, Jr., a junior majoring in physics whose home town is Jackson, Tennessee; Alfred Toole, a math/physics major in his junior year, from Mound Bayou, Mississippi; and Allen Powell, also a junior with a math/physics major, from Port Arthur, Texas.

From Prairie View College, Texas, is Delano Naylor, a math major and a senior, from Waco, Texas.

Lionell Graham, a senior majoring in chemistry, comes from Tougaloo College, and lives in Moss Point, Mississippi.

From Langston College in Oklahoma are two senior math majors: Betty Shambra, of Oklahoma City, and Laverne Johnson of Spencer, Oklahoma.

Research advisors on the BNL staff include: Don MacKenzie, Sidney Heller, John Denes, Robert Marr, Tom Kitchens, Robert Chrien, and Elliot Auerbach.

Instructors for the formal classes will include: Kurt Fuchel (Problems and Statis-

## Advisory Committee Welcomes Suggestions

The Advisory Committee appointed by Dr. G.F. Tape to assist in the search for the new Director of BNL has begun its deliberations and is hard at work gathering suggestions and ideas from as broad a spectrum of interested people as possible. Views on the future course of the Laboratory and on the criteria for the choice of a Director as well as specific suggestions of candidates will be welcomed by any of the committee members. Names proposed for consideration should, if possible, be accompanied by brief biographical data.

The committee has no specific deadline to meet, but it plans to do its work as expeditiously as possible and to report back to Dr. Tape and the Board of Trustees within a matter of weeks rather than months.

The committee is chaired by Gerhart Friedlander. The other members are Harold Atkins, Geoffrey Hind, Bernard Manowitz, Vincent O'Leary, Nicholas Samios, Julius Spiro, Joseph Weneser, and William Willis.

tics); Gerald Lellouche (Linear Algebra); Glenn Price (Mechanics); and Mulki Bhat (Modern Physics).

The students will spend mornings in class work and afternoons in research for five days each week.

## Ninth Semester Starts



An informal reception for the students participating in the Ninth Brookhaven Semester was held at the Brookhaven Center on Friday, September 8. Seated at the table are semester students L.D. Dornell, Jr., Laverne Johnson, Betty Shambra and Delano Naylor. Standing rear are: Glenn Price, Office of Scientific Personnel; Assistant to the Director, Peter Chen; Semester students Lionell Graham and Alfred Toole; Renee Flack, Program Coordinator; Semester student Allen Powell; and Deputy Director George Vineyard.

**Bridge Repairs**



Gus Arnold, Jules Varela and Henry Ruge work together to put a concrete polymer overlay on a bridge pot hole.



While the monomer is mixing in the back of a BNL truck, DAS men prepare the road surface for the application of the patching material. Jim Klein, Tony Romano and Jack Fontana get ready to install the concrete polymer.

Photos by -  
Humphrey



Examining the effects of bridge deterioration are (l to r) Larry Kukacka, BNL Project Engineer; George J. Rotariu, Program Manager, Process Radiation Staff, Division of Isotopes Development, AEC; Meyer Steinberg, Assistant Head Radiation Division, DAS; and R.G. Pike, Bureau of Public Roads, Federal Highway Administration.



An hour after finishing the road patch it is hard enough to allow traffic.



Tony Romano discusses the polymer patch with Lou Adams, New York State bridge maintenance foreman.

**BROOKHAVEN BULLETIN**

Published Weekly for the Employees of  
Brookhaven National Laboratory

CARL R. THIEN, *Editor*  
CLAIRE LAMBERTI, *Editorial Assistant*

40 Brookhaven Ave. Upton, N.Y. 11973  
Telephone 516 345-2345

NORBERT J. DERNBACH  
*Public Relations Officer*

**Arrivals & Departures**

**Arrivals**

James L. Alberi .....	Instrumentation
Thomas V. Armentano .....	Biology
Syed N. Asad .....	Medical
Edward Beardsworth, Jr. ....	Physics
Allen Bennett .....	Biology
Peter D. Bond .....	Physics
Janet I. Buiniskis .....	App. Science
Marlene Y. Chen .....	Medical
Charles R. Clairborne .....	Medical
Michael J. Creutz .....	Physics
Geoffrey R. Golner .....	App. Math.
Barry M. Jacobson .....	Chemistry
Raj Kishore .....	Chemistry
Jorgen K. Kjems .....	Physics
Peter O. Mazur .....	Physics
Peter J. McNulty .....	Biology
Nabil A. Morcos .....	Chemistry
Kenneth K. Murata .....	Physics
Charles W. Parker .....	H.P.S.
Sonja Santos .....	App. Science
Edna D. Sceviour .....	Medical
Pu Shen .....	Physics
Robert H. Siemann .....	Physics
McHarrell Z. Thomas .....	Medical
Craig E. Thorn .....	Physics
Joyce L. Tichler .....	App. Science
James P. Vary .....	Physics
David E. Whitney .....	Biology
Shin-Nan Yang .....	Physics

**Departures**

Robert J. Bores .....	Biology
Betty R. Davis .....	Chemistry
Helen H. Farrell .....	D.A.S.
Peggy Ann Foy .....	Staff Svcs.
James McGrath .....	Plant Engrg.
Paul J. Nicklaus .....	Medical
Dirk Schwalm .....	Physics
Willem I. van Rij .....	Physics
William B. Yelon .....	Physics

**Service Awards — Sept.**

**25 YEAR**

Brown, Robert P. ....	Photog. & Graphic Arts
Bull, Marshall .....	Photog. & Graphic Arts
Caiolo, Louis .....	Plant Engineering
Chase, Robert .....	Instrumentation
Cox, George .....	Photog. & Graphic Arts
Folls, George .....	Systems & Data Processing
Fuchs, Robert .....	Reactor
German, Frank .....	Biology
Hastings, Julius .....	Chemistry
Herbert, Malcolm .....	Photog. & Graphic Arts
Maile, Harry .....	Photography & Graphic Arts
Moore, William .....	Accelerator
Scandizzo, John .....	Plant Engineering
Steele, Robert .....	Biology
Vogel, William .....	Applied Science
Winters, James .....	Plant Engineering

**10 YEAR**

Bastedo, Donald .....	Accelerator
Birtle, James .....	Systems & Data Processing
Blum, Louis .....	Mechanical Engineering
Craig, Paul .....	Physics
Erickson, Theodore .....	Physics
Evans, Mabel .....	Purchasing
Gardner, Robert .....	Health Physics & Safety
Garron, Jane .....	Director's Office
Heimroth, Frank .....	Accelerator
Hogue, Richard .....	Physics
Kalmar, Leonard .....	Accelerator
Kirkup, Sadie .....	Fiscal
LeSauce, Helen .....	Physics
Rasmussen, Robert .....	Plant Engineering
Rolfes, Joseph .....	Shops
Slavinski, Robert .....	Medical
Thompson, Keith .....	Biology

**Opera Tickets**

We still have tickets available for the following performances:

Sept. 21	Romeo Et Juliette
27	Romeo Et Juliette
Oct. 2	Un Ballo in Maschera
3	Lucia Di Lammermoor
5	La Traviata
9	Romeo Et Juliette
10	Lucia Di Lammermoor
11	La Traviata
16	La Boheme
17	La Sonnambula
19	Romeo Et Juliette

Please note: Tickets not sold two weeks prior to a performance may be purchased by those employees who already have four sets of tickets in their possession.

Employees who attend one performance may purchase an additional set of tickets. (You may have four sets of tickets in your possession at all times.)

**Selected Reading**

- Minerva 10, July 1972  
The profession of science and its powers. J. Ben-David. 362-83  
A useful institution of the republic of science. A. M. Weinberg. 439-40  
Temptations and risks of the scientific adviser. R.V. Jones. 441-51
- Sat. Rev. 55, September 2, 1972  
The prize. W.K. Stuckey. 33-9
- Science 177, September 1, 1972  
Nuclear safety (I): The roots of dissent. R. Gillette. 771-4+

## BERA Golf

The BERA golf season is rapidly drawing to a close. Playoffs are in progress between the division winners in both leagues. The regular season ended with some very exciting matches. When the smoke cleared in the teams league, Tony Baltz and Howard Gittleson had nosed out Les Lawrence and Rick Murgatroyd by ½ point out of a possible total of 234. Jim Conway and Al Wirszyła beat George Korhut and Joe Mayeski by a slim 7½ points. Charlie Flood and Dick Hildenbrand came in 13 points ahead of Jack Detweiler and John May, and Audrey Blake and Peter Chen ran away with their division.

In the individual league the first and second place finishers were close in all four divisions. George Korhut beat out Jim Conway in a hotly contested match that went to the last hole of the regular season. George Stark beat out Jim Petro. Les Lawrence finished with the best record in the league but Howard Gittleson stayed close behind, and Bob Feindt edged out Jack Detweiler.

The August tournament was the biggest of the year - 18 holes at the Suffolk County Course in West Sayville. George Korhut ran away with the honors winning low gross with a sizzling 77 and low net. Tom Iarocci who needed an electric golf cart to get around took second in both categories with a fine 80. Peter Chen and Jim Conway split the third place prizes. Tom Iarocci also slipped in to take closest to the pin honors. The longest drive was a real beauty by John Dioguardo, who just beat out Peter Chen as Peter was writing his name on the distance marker. John May was setting a torrid pace on the front nine but burned himself out by the 15th hole and had to retire to the clubhouse to get recharged. The 19th hole was well played by all hands.

September 21 has been set for the final tournament of the year. It will be played on the Sandpiper Course at Spring Lake. Let's finish the season with a full turnout. A spaghetti dinner and the presentation of awards is tentatively planned for September 28 in the BERA Recreation Hall. Final details will be announced by letter.

## Hospitality News

This month's morning coffee, sponsored by the Hospitality Committee, will be on Monday, September 25. It will be held in Apartment 1A from 10 a.m. to noon.

This will be an excellent opportunity to meet those who have just arrived. And remember--bring the children.

## Personnel Services At the Recreation Office Open Daily 9:00 a.m. to 1:00 p.m.

## Cafeteria Menu Week Ending September 21, 1972

<b>Friday, September 15</b>	
Fish Chowder	
Fried Fillets of Sole w/Tartar Sauce & French Fries	.95
Codfish Cakes & Spaghetti	.85
Baked Beef Loaf w/Gravy & 1 Veg.	.90
<b>Monday, September 18</b>	
Cream of Tomato Soup	
Breaded Pork Chop & 1 Veg.	.95
Beef Ravioli w/Parmesan Cheese & 1 Veg.	.90
Beef Livers w/Onions & 1 Veg.	.85
<b>Tuesday, September 19</b>	
French Onion Soup	
Salisbury Steak w/Brown Gravy & 1 Veg.	.90
Frankfurters Rolled in Bacon w/Baked Beans & Cole Slaw	.85
Sliced Turkey & Stuffing w/Cranberry Sauce, Giblet Gravy & Veg.	.90
<b>Wednesday, September 20</b>	
Vegetable Soup	
Chinese Pepper Steak on Rice	.90
Old Fashioned Chicken Pie w/Biscuit Crust	.95
Flounder Stuffed w/Crabmeat & 1 Veg.	.90
<b>Thursday, September 21</b>	
Turkey Noodle Soup	
Grilled Monte Cristo Sandwich	.85
Veal Patty w/Noodles Oregano	.85
Braised Beef a la Mode & 1 Veg.	.95

## Nassau Coliseum Tickets

"New York Nets" - Professional Basketball - A.B.A.

"Islanders" - Professional Hockey - N.H.L.  
BERA Tickets On Sale - September 25

As soon as our employees heard that the newly finished coliseum was going to be the home of the Nets and the Islanders, they started asking BERA to try to get them seats. In response to those many requests, we have purchased tickets for all of the home games. We are hoping the employee response is favorable so that we may continue the program in the future. Obviously if the sale is poor - the program will be dropped in '73. So buy your tickets early!

The Recreation Office door will be open 7:30 a.m. Monday, September 25 to start the sale. After the initial sale, the Recreation Office will be open for ticket sales and information daily from 9 a.m. to 1 p.m. only.

BERA has 4 seats for each of the home games located in Section No. 321 - Row A which are priced at \$6.50 each for the Nets and \$7.00 for the Islanders.

In an effort to make tickets available to as many interested employees as possible, the following sales procedure will be observed.

1. No orders will be taken before Monday, September 25 at 7:30 a.m.

2. **Nets** - Employees may purchase either two or four tickets. Tickets will not be sold to any one employee for more than two games in advance. An employee who has purchased tickets for two games in advance will be permitted to buy additional tickets only after he has attended at least one of his games. In other words, tickets will not be sold to anyone currently in possession of tickets for two unplayed games. (This restriction may be lifted if warranted by sales.) **Islanders** - Same as above.

3. An employee must appear in person to make purchases.

4. Checks should be made payable to BERA.

5. Tickets will not be returnable or acceptable for refunds or exchange at the Recreation Office. All sales are final.

## Mixed Bowling League

The BNL Mixed League will be bowling at Port Jefferson on Wednesdays at 6:30 p.m. We still have room available so if you want to bowl now is the time to join a congenial fun type of league. This is a great way to meet other people at BNL and to learn how to bowl. Contact Recreation, Ext. 2873 or Lew Jacobson, Ext. 2462.

## Athletic Equipment on Sale At Film Service Office

Arrangements have been made to make available for resale to employees certain items of athletic equipment at the Film Service Office in the Gymnasium.

The office is open Monday through Friday from 9:00 a.m. to 3:00 p.m. Items for sale include tennis balls, ping pong paddles, athletic sox, combination locks, badminton birds, playing cards, combs, softballs, bathing caps, nose clips, ear plugs, physical fitness booklets, BERA emblems, BERA T-shirts, BERA cookbooks, and How to Do It booklets on Archery, Badminton, Bowling, Fencing, Fishing, Judo, Life Saving, Skiing, Scuba Diving, Softball, Table Tennis and Volleyball.

For more information stop by or call Extension 3347.

## Selected Reading

- New Scientist 55, August 17, 1972**  
Programmer's gambit. D. Michie. 329-32.  
Scientific publishing and the law. D. Robb. 335-6
- Science 177, August 18, 1972**  
Willow Run Laboratories: Separating from the University of Virginia. J. Walsh. 594-6  
Physics in perspective: A new report. A.L. Hammond. 597-9
- Environmental law: A challenge to the legal profession.** Remarks by William O. Doub, Commissioner, U.S. Atomic Energy Commission, at the American Bar Association Convention, San Francisco, California, August 14, 1972. Press Release No. S-12-72, August 18, 1972

## World of BNL

The World of BNL is now broadcast Sundays over four stations instead of two. The times and stations are as follows: at 8:15 a.m. over WBLI-FM (106.1), Patchogue; WRCM-FM (103.9), Riverhead; WHRF-AM (1570), Riverhead; and at 11:15 p.m. over WGLI-AM (1290), Babylon.

## Cooking Exchange

The first Cooking Exchange will be held on Thursday, September 21, from 3 to 5 p.m. Babysitters are available. This session will be Chinese cooking.

## Film Service Office

Effective September 1st the Film Service pricing will give you a choice between Kodak and other Laboratories at a cheaper price and film will be sold cheaper than any place you can go. The Film Service Office will also supply the normal athletic equipment at reasonable prices.

## Classified Advertisements

### Placement Notices

Each week, the BROOKHAVEN BULLETIN lists personnel placement requisitions currently being processed. The purpose of these listings is, first, to give notice of all non-scientific staff positions being filled and, second, to give employees an opportunity to request consideration for themselves or others whom they wish to recommend to BNL. In filling vacancies, the Laboratory's objective is to give first consideration to present employees, as follows: employees within the immediate group having the vacancy, employees within the department or division, employees within the Laboratory as a whole. For further information regarding a placement notice, please contact Employment Supervisor, extension 2879 or 2882.

LAMP CLEANER (1) - Plant Engineering. Application deadline: September 22, 1972.

BIOMEDICAL TECHNICIANS (2) - Part-time. Collection and processing of pulmonary function data. Department of Applied Science.

TECHNICIAN IV - Tandem Van de Graaff operations. Eight hours per week. Physics Department.

TOWER LINEMAN (1) - Plant Engineering. Application deadline: September 21, 1972.

REFRIG. & AIR CONDITIONING ENGR. (1) - Plant Engineering. Application deadline: September 19, 1972.

### Autos & Auto Supplies

61 BUICK - 2 dr hdtip, auto trans, w/w, good transportation, good eng. 363-6597.

69 OLDS CUTLASS CONV - Air cond, new tires, many extras. \$2400. 473-2322.

TIRES - 2 ea 9.15x15, 1 ea 8.85x15 snow, 1 ea 8.45x15 snow, 1 ea 6.50x16 on rim. Whitey, Ext. 2907.

67 FAIRLANE STATION WAGON - 6 cyl, auto trans, r/h, excel cond. \$750. L. Richardson, 286-8071.

TIRE - Brand new 7.75x14, 4 ply nylon tire mounted on Chevy rim, never used. \$15. 732-5829.

65 CHEVELLE - 2 dr, 6 cyl, good running cond, auto trans. Terry, 289-5254.

64 VW SUNROOF - 70,000 mi. \$300. LoMonte, 929-4903 after 6.

71 TRIUMPH BONNEVILLE - 3200 mi, 650 cc, excel cond, 5 spd trans. \$1000 firm. Fred, Ext. 4145.

65 VW - Needs work. \$250. 286-0656 after 1 p.m.

WHEELS - 14" Chevy & Ford, \$5/pr, good cond; 12v gen, GM type, \$7. Bob, Ext. 4652, 289-0357.

70 MAVERICK - Factory air cond, auto trans, 6 cyl. \$1295. 473-6386 after 2:30.

72 YAMAHA 175 - 300 mi, mint. \$600 firm. 325-1543 after 6.

69 VW MODEL 311 FASTBACK - Excel cond, 41,000 mi, r/h, clock. Liu, Ext. 3394.

65 OLDS 98 - 4 dr sedan, ps/pb, p/seat, air cond. \$700. M. Czapak, Ext. 3284, 473-8962 eves.

TIRE - 6.45x14 b/w, never used. \$15. Doris, Ext. 2441/2445, 281-3423 Fri-Sat-Sun eves.

70 VW - Auto trans, good cond, 26,000 mi. \$1500. Bill, Ext. 2926.

67 VW - 2 dr, red/blk int, w/w, r/h, new batt & muff, reg shift, good cond. \$650. Roger, 588-8454.

70 FORD TORINO BROUGHAM - Lt blue 2 dr, auto trans, r/h, p/disc, new shocks & tires, A-1 cond. \$1995. Roger, 588-8454.

65 VW BUS - Top cond. \$750 or best offer. 928-1230.

69 MGB - Red, am/fm, wire wheels. \$100 & take over payments. JU8-4766.

68 GMC - ¾ ton custom camper pickup, 351 cu in V6, auto trans, ps/pb, new brakes, snows, very good cond. 878-0567.

VW WHEELS - \$2.50 ea. 581-0932 after 6.

## Informing the Disabled

Skills Unlimited, Inc., the non-profit vocational training center for the handicapped located in Oakdale, has announced plans to launch a "public awareness" campaign aimed at informing the disabled and their families of the many training opportunities available through private and public agencies.

Skills Unlimited, serving Nassau and Suffolk counties, offers training in automotive mechanics, clerical and office work, cafeteria and food services, grounds and maintenance, machine shop, electronics, simple assembly and homemaking. Programs are offered to any handicapped adult, sixteen years of age or older, with potential for competitive or sheltered employment.

For further information, write or call, Skills Unlimited, Inc., 405 Locust Avenue, Oakdale, N.Y., attention Mrs. Josephine F. Flouio, Public Awareness Campaign, (516) 567-3320.

67 PLYMOUTH - 4 dr sedan, ps/pb, good rubber, perf cond, appearance excel. \$750. G. Betz, Ext. 3284, 924-3236.

71 DODGE CHARGER - 2 dr hdtip, 318 V8, air cond, tinted glass, vinyl roof & int, ps, remote control mirror, rear speaker, very good running cond, must see to appreciate. Ext. 2898.

61 BUICK LESABRE - 4 dr, ps/pb, r/h, auto trans, good cond, runs well. \$180. Sue, Ext. 3675, 473-6570.

62 RAMBLER AMERICAN - Needs trans work, runs well, excel for parts. Richie, Ext. 4254.

61 CHEVY - Dependable transportation for work, leaving Lab. \$75. 281-4371 after 5:30.

66 FAIRLANE STATION WAGON - V8, auto trans, r/h, good cond. \$575. Ext. 3358.

61 FALCON - 4 dr, 20,000 mi on rebuilt eng, 2000 mi on tires, rusty needs clutch & gen work. \$100. P. Adams, Ext. 2544.

EXTRA 13" SNOW RIMS - For Falcon or Comet. Geo., Ext. 2043.

72 PINTO RUNABOUT - 4 spd stick shift, r/h, low mileage, like new cond. 281-4140.

68 MUSTANG - White, 6 cyl, manual, good cond, early Oct. J. Coggins, Ext. 3379, eves Ext. 3097.

66 CHEVELLE - Auto trans, very good cond. \$500. B. Babcock, Ext. 4046.

69 IMPALA - 4 dr sedan, turbo-automatic, posi, Reese hitch, 18' Cree travel trailer, self-contained, excel, package deal. 325-1961.

TIRES - 1-6.85x15, 1-6.50x13 snow, both have plenty of tread. Bob, 744-7170.

70 VW - Auto, rear defroster, am/fm. Asking \$1475. 473-2322.

65 TRIUMPH TR-4 - 3 yr old eng, good tires, best offer. Ken, Ext. 4580.

62 FORD FALCON - Auto trans, new brakes, 2 new rear tires, new shocks, just tuned up. \$200. 924-3170.

2 VW SNOW TIRES - 5.60x15, like new. \$10 ea. Ext. 3083.

69 MERCURY CYCLONE FASTBACK - Full pwr, air cond. Asking \$1800. T. O'Brien, Ext. 3305, 924-6596.

63 OLDS 85 CONV - Needs muff assembly & tuneup. \$150. George, Ext. 2534.

62 FORD FAIRLANE - Std shift, new batt, brakes, very good cond, moving - must sell. \$250 or best offer. 744-8928.

TIRES ON RIMS - For 65 VW, cheap. Ext. 3626.

2 BBL STROMBERG CARB - O. Booker, Ext. 4719.

70 FORD GALAZIE - Auto trans, V8, air cond, ps/pb, very good cond. Ext. 4149.

65 CHEVY BELAIR - V8, air cond, 4 new tires, 4 dr, excel cond, avail 9/27. \$550. Ext. 4379/3191.

SHOCKS - Full set Sears super duty shock absorbers for 65-70 Chevys. B. Espensen, Ext. 3992.

68 PLYMOUTH VALIANT - 4 dr, green, 6 cyl, manual shift, good cond. Arnie, Ext. 2449.

62 AMBASSADOR - Mech very good, rust on body but no leaks, off to college - need money. \$125. 473-2507.

### Boats & Marine Supplies

O'DAY "MARINER" - Excel cond, 5 hp Evinrude, fully equipped for cruising, many extras. \$2000. 288-2179.

18' CABIN CRUISER - Excel family boat, 85 hp, 1969 Evinrude elec, all access, slip 14B, Mt. Sinai Marina. \$895. Ext. 4758, 744-5018.

14' FIBERGLASS BOAT - 40 hp Johnson, trailer, 4 life cushions. \$650. Ext. 4529.

15½' THUNDERBIRD - Fiberglass tri-hull, 85 hp Evinrude elec-both 1969, pwr tilt, stainless steel prop, tach, speedometer & 4 gas tanks, full cover, 1970 Tee Nee trailer. \$2500. P. Valli, Ext. 2023.

18' CABIN - Elec start, compass, speedometer, sleeps 2, 35 hp Johnson, new steering cables. As is, \$350. Bernie, Ext. 4783.

16' SEA SKIFF - W/35 hp Evinrude, trailer, extras. \$250. 581-0932 after 6.

OUTBOARDS - 1965-18 hp Evinrude, \$150; 1958-50 hp Evinrude, \$175; control box for Mercury & control box for Evinrude elec shift. Ext. 4666, 475-8504.



## Classified Advertisements

### Boats & Marine Supplies

LARSON 17' RUNABOUT - Fiberglass, 50 hp Mercury, trailer, compl equipped, many extras. \$1600. 281-4140.

12' SAILBOAT - Lockley Sea Devil, new this yr. \$130. F. Rumph, Ext. 4581.

21' SHORE BIRD - Gaff rigged racing sloop, fiberglass over wood, 4 hp Evinrude (10 hrs), all hardware ready to sail. \$895. Red, Ext. 2930.

### Miscellaneous

ADD MOISTURE TO AIR - Lower fuel bill, Sears humidifier deluxe console, used 3 mos. \$70. HA7-8443.

REIKER SKI BOOTS - Woman's size 7, fleece-lined w/buckles, 2 yrs old, excel cond. \$40. Susan, Ext. 4046, 475-1727.

ELEC GUITAR - Univox Les Paul model w/case, 1 yr old. \$150. Dave, Ext. 3427.

2 SETS TWIN SIZE CANOPY - Coverlet & 36" cafe curtains, pink & white print; 1 boy's twin spread & 36" cafes, red/white/blue nautical print. 878-1465.

POLAROID AUTO COLOR CAMERA - Model No. 210 w/flash & case. \$25. H. Spiess, Ext. 4417.

WILDCAT TRACTOR - 8 hp Briggs & Stratton eng, 26" mower blade, 1 yr old. \$200. L. Richardson, 286-8071.

GIRL'S 20" BICYCLE - \$12. Woodwell, Ext. 3402.

FREE - In exchange for help putting up new fence: weathered wooden picket fence, needs some repair. Ext. 3655, 281-2002.

H/W HEATER - 55 gal Westinghouse elec, very reasonable. Ext. 7655, 281-2002.

PERSIAN LAMB COAT - Excel cond, size 18. Asking \$200. Dot, Ext. 3675, 286-8909.

ENGLISH BABY CARRIAGE - Excel cond, best offer; bike, \$10; hair dryer, \$5; iron, \$4; elec clock, \$3. Ext. 3071.

SAVE-A-GERBIL (OR TWO) - Our 5 cats are looking longingly at our gerbils, must sell. 50¢ ea but price negotiable. Mike, Ext. 4746.

SLIDE PROJECTOR - Revere automatic, 2x2 slides, pointer & timer, w/24 slide trays. \$35. Carl, Ext. 2347, 744-2069 after 6.

TORO SNOW BLOWER - Used twice, bought last Christmas, \$100. Ext. 4529.

POOL TABLE - 1" honeycomb. Cost \$225, price \$50. Ext. 4529.

24 PLASTIC BLK DUCK DECOYS - Over-sized. \$50. 286-9485.

PAINT SPRAYER - Sears mod No. 500, ½ hp oilless piston w/gun, used twice. \$65. Ext. 2940.

WEDDING DRESS - Detachable train, worn once, simple sophisticated design, size 9/10, cheap, best offer; Head skis, poles, boots, best offer. Ext. 7970.

FILE CABINET - 4 drawer, light wt metal. \$5. Ext. 4451, LT9-3269.

WASHING MACHINE - Semi-auto, apt size. \$18. K. Fuchel, Ext. 4116.

PLANT SALE - W/beautiful base or pot, due to moving; Yamaha console piano, 3½ yrs old, excel cond, due to moving, \$350. Ext. 3577/3600.

LEAVING - Din table set, fan, sofa bed, others. Ken, Ext. 4581, 289-6940.

TENT TRAILER - Wheel camper hdtip, sleeps 8, LP stove, heater, sink, ice box, 12v & 110 v lights, twin dinettes, elec brakes. \$900. R. Hildenbrand, Ext. 3274.

SM UPHOLSTERED CHAIR - Lg decorative cork wall panel, wall moun-ed shelves, folding clothes line. 286-1493 eves.

WESTINGHOUSE AM/FM RADIO - Solid state, very good cond, \$25; colonial sofa, \$45. H. Sinning, 281-3814.

8 TRACK STEREO TAPE DECK - \$30. W. Lundgren, Ext. 4278, 585-3794.

ENGLISH SETTER PUPS - 8 wks old, AKC reg, all shots, field bred. 289-8236.

MINI BIKE - \$65. 732-1913.

BABY FEEDING TABLE - Formica surface, excel cond. \$10. 924-5192.

TV - B&w RCA, 23" tube, floor model, about 10 yrs old, needs work, make offer. Anne, Ext. 3381, 286-3764 eves.

REFRIG/FREEZER - 2 dr Hotpoint. \$45. Ext. 3047.

BICYCLE - Boy's Rolfast hi-riser, banana seat, good cond. \$15. 286-8814.

BOY'S CLOTHING - Delicately used size 12 & 14 sport jackets w/slacks, shirts, ties, sweaters, winter jackets. 286-8814.

SLACKS - Danskin brown flared slacks, size 12, barely used, \$4; girl's fall & spring dress coat, "Philadelphia Girl," size 8, red/white/navy, worn twice, \$8. MacKenzie, Ext. 4490.

GIRL'S CLARET MAXI-COAT - Bottom zips off, size 10, good cond, after \$5 dry-cleaning, \$5; sm girl's blk leotard, size 4-6x, \$2. MacKenzie, Ext. 4490.

1970 COLEMAN POP-UP CAMPER - Sleeps 6, stove, sink, cooler & extras, excel cond. \$795. 728-2566.

1971 FORD F250 CAMPER SPECIAL - W/8' mobile traveler. 286-9832.

2 AIREQUIPT CIRCULAR SLIDE MAGAZINES - Holding 100 slides ea & 1 straight cartridge of 36 slides. \$3/all. Sue, Ext. 3675.

DIN RM CHANDELIER - Brass w/52 tear drop crystals & elec candle lights, perf cond. \$40. Sue, Ext. 3675.

MINI-POODLES - AKC reg, males & females, blk, 281-3992.

BABY FURN - 4 drawer chest, crib, matching set, antique white, good cond. Irwin, Ext. 4637/4592.

GUTTER ELBOWS - White alum, approx 30. 25¢ ea. 281-4140.

TABLES - 2 step, 1 coffee, w/glass tops, 3 pc set, \$15; beveled siding, approx 500 board ft, 1-3-0 dbl hung window, wood, never used. 281-4140.

CHEST - \$20; coffee table, \$5; braided rug, \$40; sofa, \$80; grill/roisserie; iron, ironing board. Lesley, Ext. 3412, 345-3097.

OLD BATHTUB - Footed cast iron, compl w/detachable legs & drain, no faucets. Fuller, Ext. 2923.

LAWN SWEEPER - Parker, new 26" brushes, Briggs & Stratton motor, all excel cond. \$75. E. Bihn, Ext. 3840.

JOINTER/PLANNER - Wallace pro model, ½ hp direct drive motor, handles 6" stock, spare blades, excel cond. \$95. E. Bihn, Ext. 3840.

SIBERIAN HUSKY - 4 mos old, beautiful female, healthy, papers, shots, access. \$250. Ext. 3435.

BLONDE WIG - Best offer. "Blondes have more fun." Ext. 2468, 473-0178 after 6.

FIREPLACE SCREEN - \$5. Bob, 744-7170.

FRIGIDAIRE REFRIG/FREEZER - Old but good working cond. \$40. H. Purohit, Ext. 2540, 744-8755 after 6.

MAGNAVOX B&W TV - \$35. H. Purohit, Ext. 2540, 744-8755 after 6.

MUST SELL-CHEAP-MOVING - Ital Prov din rm table & 6 chairs, liv rm set. 653-4618.

GERMAN SHORTHAIR POINTER - Needs a home! Solid liver, male, housebroken, 2½ yrs, good w/ children. \$25. 653-4618.

STORM DOOR - White alum cross buck, 37"x81" RH, used 1 yr. Orig cost \$50, sale \$25. John, 744-5867 eves.

BABY THINGS - Swing & walker. Bob, Ext. 4672, 929-4753.

GE WASHING MACHINE - Excel cond, 3 yrs old, due to moving. New \$270, asking \$125. Ext. 3577/3600.

FIREPLACE SET 5 pcs. \$20. 653-4618.

WOOD DOOR - Crossbuck w/glass & screen, 37"x81," used, good cond, \$15; hydrangeas, blue, French, growing in pots, \$1.50 ea; white pines, up to 4', \$1/ft. John, 744-5867 after 6.

WOOD CHESS SET - Like new, \$5, worth \$11. Charlie, Ext. 3395.

FREE PROMISE OF LOVE - Beautiful blk matched pair young cats, altered, shots, housebroken, lovable. Saxon, Ext. 3435.

ROCKING CHAIR - Walnut, good cond, reupholstering advisable. \$10. 286-3742.

CLARINET - Good cond. \$50. F. Thomsen, Ext. 4434.

POLAROID CAMERA - Model No. 800 bellow type, takes roll film, w/focus knob. \$75. J. Zahra, Ext. 4634/4667.

NAT'L GOLD CUP 38 - Mid range auto pistol w/1 box of wad cutters. \$165, terms can be made - must have permit. J. Zahra, Ext. 4634/4667.

ASSTD POTS & PANS - \$10/lot. 286-3742.

SILVER CERTIFICATES - National Geographic magazines, Lionel elec train set. O. Booker, Ext. 4719.

PORTABLE TRANS RADIO - 1 yr, \$5; elec window fan, \$8; Panasonic TV, 12", 1 yr old, \$50. Ext. 4379/3191.

SKIIS - Boots (10W) & poles, \$20; 6" reflector telescope, elec clock drive, slow motion control, 4 lenses, \$150. Red, Ext. 2930.

CHOPPER - 1971 Raleigh Classic, excel cond, 5 spd, orange. \$45. Chip, 744-2069.

SEARS PWR REEL MOWER - Scotts spreader, used twice; Castro multigrade XL motor oil, 1 doz qts & 4 gals; moving, must sell. 744-8928.

PAINT - 1 qt Woolsey Yacht Copper paint (anti-fouling) & 1 pt flat white. \$4. Coggins, Ext. 3379.

### Real Estate

Real Estate advertised for sale or rent is available without regard for the race, color, creed or national origin of the applicant.

### For Sale

BELLPORT - "L" shaped expansion ranch, 3-5 bedrms, 2-3 baths, fam rm, fireplace, full bsmt, 2 car garage, for sale by owner. \$41,500. 286-3358.

### For Rent

FURN RM - TV, some kitchen privileges. W. Lundgren, Ext. 4278, 585-3794.

FURN APT - Lovely new 2 bedrm furn apt, Holtsville, Sept-June, ideal for teachers. Ext. 4425, 732-2720.

### Wanted

ON-SITE BABYSITTER - To collect 3 yr old from Nursery School & care for her until 2 pm (Mon-Wed-Fri). Crennell, Ext. 2528.

HOME FOR A GOOD DOG - Golden Retriever, 3½ yrs old, good watch dog, good w/children. Charlie, Ext. 4452.

### Classified Ad Policy

#### Deadline is 12 noon Friday for publication the following week.

- The Brookhaven Bulletin's classified section may be used only by active and retired Laboratory employees.
- All items for sale or rent must be the advertiser's property.
- Ads for material acquired for resale in association with a full or part-time business cannot be accepted.
- Firearms offered for sale or trade may not be brought on site.

- Ads not carried because of space restrictions will be held for publication in the next issue.
- Ads are run only once and must be resubmitted if they are to be repeated.
- Ads should be restricted to 20 words or less and typed or printed on the form provided, and must bear the employees signature.

- For Sale: Auto & Auto Supplies  
 For Sale: Boats & Marine Supplies  
 For Sale: Miscellaneous

- Wanted Carpools  
 Lost & Found

Check  the heading applying to your ad. Print or type your ad in 20 words or less.

Ads concerning property for sale or rent cannot be accepted on this form. Special Real Estate Ad forms are available at the Office of the Brookhaven Bulletin, Room 112, 40 Brookhaven Avenue.

(Name & Phone No. To Call)

Employee's Signature ..... Life No. .... Ext. ....

Send to: Brookhaven Bulletin, 40 Brookhaven Avenue