



Lancaster Leaves For VLA Project

After 26 years of service with the AEC and Brookhaven National Laboratory, Jack Lancaster of the AGS has left to become Project Manager of the new radio telescope array to be constructed in New Mexico.

The \$76 million VLA (Very Large Array) Project was approved early last year, and would be owned by the National Science Foundation and operated as a national facility by Associated Universities, Inc.

According to David S. Heesch, Director of NRAO, Lancaster, in addition to his designation as Project Manager, will become Assistant Director, and will be responsible for all aspects of the VLA construction.

Jack Lancaster came to Brookhaven in 1946 as Chief of the Engineering and Construction Branch of the Brookhaven Area, AEC. He was responsible for the coordination and general administration of design and construction of BNL.

In 1954 he transferred to BNL and became administrative officer of the \$30 million Alternating Gradient Synchrotron Project.

From 1958, when most of the major construction work of the AGS was completed, he was involved in all of the large construction projects of the Lab. In 1965 he became Deputy Division Head of the Accelerator Department in charge of the \$48 million AGS Conversion Project.

Lancaster also served as consultant to the NSF and Cornell University for the upgrading work at the 1000-ft diameter Arecibo radio-telescope.

Mr. Lancaster has a degree in Civil Engineering from Worcester Polytechnic Institute. He is a licensed professional engineer in New York State and a member of the National Society of Professional Engineers and the New York State Society of Professional Engineers.

John May and Emory Egler have assumed the responsibility for all of the pending construction programs in the Accelerator Department. They will continue to supply the design, estimating and construction supervision work at the AGS.

AUI Scholarships

All employees who have not yet done so are urged to pick up an application for AUI Trustee Scholarships from the Office of Scientific Personnel, 40 Brookhaven Avenue. The deadline for submission of applications to Educational Testing Service, Princeton, N.J. is November 17.

World of BNL

The radio program, World of BNL, is broadcast every Sunday over two AM and two FM stations, as follows: at 8:15 a.m. over WBLI-FM (106.1), Patchogue; WRCM-FM (103.9), Riverhead; WHRF-AM (1570), Riverhead; and at 11:15 p.m. over WGLI-AM (1290), Babylon.

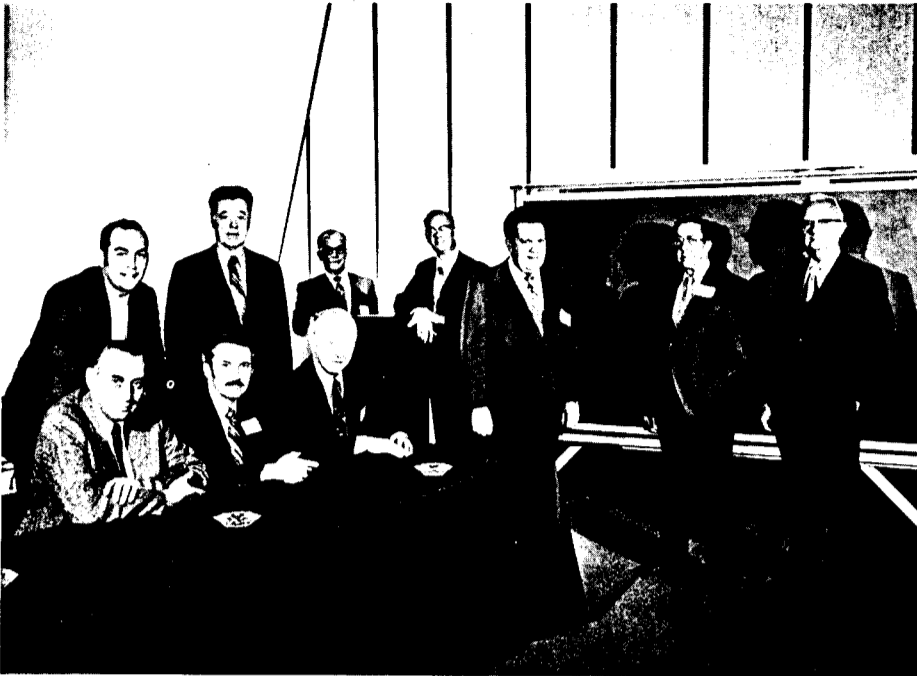
This week the guest will be Vance Sailor who will discuss Future Sources of Energy with host Norb Dernbach.

Snow Closing

As in past years, Lab employees are urged to listen for closing notices before starting for work on snowy days. Information on emergency closing due to inclement weather will be carried by the following radio stations:

Station	Area	AM	FM
WALK	Patchogue	1370	97.5
WBAB	Babylon	1440	102.3
WGLI	Babylon	1290	—
WGSM	Huntington	740	—
WHLI	Hempstead	1100	98.3
WHRF	Riverhead	1570	—
WLIX	Islip	540	—
WLNG	Sag Harbor	1600	—
WPAC	Patchogue	1580	—
WRIV	Riverhead	1390	—
WWRJ	Southampton	—	95.3
WBLI	Patchogue	—	106.1
WRCM	Riverhead	—	103.9

Operations Managers Meet



The Plant Engineering Division was host last week to a meeting of Plant Operations Managers from AEC installations throughout the country. Attending were: (Seated, left to right) Clifford M. Bacigalupi, Lawrence Livermore Laboratory; Donald G. Eagling, Lawrence Berkeley Laboratory; Harry E. Seagren, Oak Ridge National Laboratory. (Standing) Louis A. Harson, BNL; Edward E. Shelton, BNL; Leroy J. Lucas, Hanford Engineering Development Laboratory; Alfred Mahlmann, BNL; William F. Molloy, Argonne National Laboratory; Charles A. Reynolds, Los Alamos Scientific Laboratory; and Edgar J. Hunter, BNL.

United Fund Drive

Now is the time for you to help the organizations participating in the United Fund drive. Boy and Girl Scouts, hospitals, Red Cross, Salvation Army, and a host of other organizations that do not run separate fund drives.

These organizations need your help and financial assistance if they are to continue their services. Payroll deduction is an easy way to accomplish this, and your deduction is fully tax deductible.

So . . . if you want to help one deaf child, one blind man, one crippled woman . . . if you want to help someone who is bed-ridden or lonely, homeless or hungry, just one abandoned or destitute person — simply give to the United Fund. Your contribution will reach more than one of them. It will reach all of them through the United Fund. It will benefit young and old alike, the sick, the retarded, the handicapped, the desperate — people in need of aid.

Your dollars provide food and shelter, clothing, counseling, care, and guidance. Your dollars keep clinics and dispensaries open. They heal and relieve.

Your contribution means much to many people. The United Fund provides financial support for some 96 voluntary agencies and hospitals, organizations which provide vital services for the 2½ million residents of Long Island.

Chess Club

We're on our way! The tournament began last Thursday. Forms were provided for members to record their games and a master board posted to record total results. The tournament was increased to 30 participants. Please bring chess sets to the meetings, we seem to be in short supply at times. New members to the club are always welcomed. For information call George, Extension 3298, or Tom, Extension 3297.

IBEW Meets November 27

Because of the Thanksgiving holiday, local 2230 IBEW will hold its regular monthly meeting on Monday, November 27 at 8 p.m. in the K of C Hall, Railroad Avenue, Patchogue. There will also be an afternoon information meeting at 2 p.m. for shift workers at the Union Office, 31 Oak Street, Patchogue.

On the agenda will be regular business, committee reports and the President's report.

Cooking Exchange Meeting

There will be a traditional Thanksgiving Dinner on Thursday, November 16 at 3 p.m. at the Recreation Hall. Baby sitters will be provided.

Plant Operation Managers Meet

BNL's Plant Engineering Division hosted a Plant Operations Manager's Meeting on November 1 and 2 at Berkner Hall. Plant Managers from seven AEC Laboratories attended.

The purpose of the meeting was to discuss new developments and solutions to common problems in plant operations. The meeting was opened with a welcome by Associate Director V.R. O'Leary, followed by an introduction to BNL by Ed Shelton, Manager of Plant Engineering.

Methods of cost saving frequently entered the discussion. Other subjects included utility reliability, protection of property and utilization of manpower.

The meeting was arranged and moderated by Al Mahlmann of Plant Engineering.

Fifth BERA Art Exhibit To Open November 28

The time is coming for BNL artists to make plans to register their work for the BERA Members Show. The Art Committee has scheduled the evening of November 28 for the opening, and the Exhibition will be on view at the Exhibit Hall through December 8th.

Employees and members of their immediate families who live with them may exhibit; the number of works submitted is restricted to two per medium from each artist. Registration forms are available now at the BERA Recreation Office, 58 Brookhaven Avenue (ext. 2873). There will be an early deadline for submitting the forms, so a catalogue can be ready for the opening. So act quickly, select the works you wish to show immediately, and plan to attend the party on the 28th.

Apple Warm Winter

Apple Warm Winter is the title of a painting which has recently added its warmth and color to Berkner Hall. The painting was presented to the Laboratory in memory of Elsa Collins who until her death two years ago was a dominant force in the artistic activities at the Laboratory.

Apple Warm Winter is a large, colorful, abstract work by the American painter, Emily Mason. Emily Mason was trained at Bennington College and the Cooper Union and studied at the Academia di Belle Arti in Venice under a Fulbright Grant. Her studio is in New York City.

The painting hangs opposite the long reception desk used for conferences.

Radio Club Meeting

The next Radio Club Meeting will be held on Thursday, November 9, at 8 p.m. in the Recreation Building.

Special Thanks To Visitors' Days Staff

Dr. Maurice Goldhaber, Laboratory Director, wishes it were possible for him to personally thank each one of the hundreds of workers whose efforts contributed to the success of this year's Visitors' Days.

A statement to the *Brookhaven Bulletin* expresses these thoughts: "I wish to extend my personal thanks to all who gave so generously of their efforts this year, and who helped welcome the public to the Laboratory. It is by your enthusiastic response to the many questions of our visitors that we help to broaden their understanding of science and leave them with a better appreciation of the research we do, as well as the people who work here. Thank you, again, for joining in this successful venture."

According to Mrs. Sayre, in charge of Special Programs, "All of us working at the Reception Center were impressed with the cheerful, friendly, and helpful attitude of our exhibitors and traffic people. Whether it was locating a lost boy, a lost parent, or a car in the parking lot, the task was accomplished with enthusiasm, friendliness, and good humor. Some workers have told me that they have plans and suggestions for next year to improve the operation. It looks like we can look forward to an even more successful event next year!"

Free Test Offered For Diabetes

Free one-minute tests to detect diabetes will be given by the Suffolk chapter of the New York Diabetes Association in cooperation with the Suffolk County Health Department, Medical Society and the Kiwanis Clubs of Huntington during Diabetes Detection Week, November 12-18.

There are 1,600,000 undetected diabetic men, women and children in the United States today and each year, 325,000 Americans learn that they have diabetes. Dr. John Aloia, chairman of the chapter's advisory committee urges residents, regardless of age, to take the test.

It is recommended that individuals taking the one-minute test consume one of the following meals 90 minutes beforehand: Breakfast . . . eight ounces of orange juice, two slices of toast with jelly, coffee with sugar or eight ounces of chocolate milk; lunch . . . four ounces of orange juice, one sandwich, eight ounces of milk and one fresh fruit. After finishing the suggested meal, **nothing else is to be eaten.** No gum, candy, soda, etc.

Jenean Sollie, chapter chairman announced that the tests will be administered at A&S, Smith Haven Mall on Nov. 16, 17 and 18 from 10 a.m. to 10 p.m. . . . Southshore Mall (Bayshore) Nov. 16, 17 and 18 from 10 a.m. to 5 p.m.

Also, Southampton Hospital, Nov 13 thru 18 by appointment only, 283-2600 Ext. 245. Central Suffolk Hospital (Riverhead) Nov. 13 thru 17 by appointment only, 369-6016. Brookhaven Memorial Hospital (Patchogue) Nov. 12, appointment only, GR5-5000 Ext. 321.

And, Mather Hospital (Port Jefferson) Nov. 16 by appointment only HR3-1320, Ext. 315. Eastern Long Island Hospital (Greenport) Nov. 16 and 17, 10 a.m. to 3 p.m. Smithtown Hospital, Nov. 15 from noon to 4 p.m. (light breakfast only.)

Further information may be had by calling the chapter service, 724-0303.

BAFFA Symphony

The BAFFA Symphony Orchestra will present an All Beethoven Program on Sunday afternoon, November 19, 1972, at 3 p.m. in the Bellport High School Auditorium, Brookhaven Hamlet.

The program features Overture to Egmont, Symphony No. 6 in F Major Opus 68, and Concerto for Violin and Orchestra in D Major, Opus 61, with Edward Polidi as violin soloist.

Tickets at \$2.50 for adults and \$1.50 for students and senior citizens may be purchased at local box offices and at the door. For tickets please call David Alburger, Ext. 4554.

Visitors' Day



5000 interested visitors turned out Saturday to attend BNL's annual open house. Between high school students and the general public, a combined total of 8400 people came this year to learn about the facilities, research, and people of Brookhaven.



BROOKHAVEN BULLETIN

Published Weekly for the Employees of Brookhaven National Laboratory

CARL R. THIEN, Editor
CLAIRE LAMBERTI, Editorial Assistant

40 Brookhaven Ave. Upton, N.Y. 11973
Telephone 516 345-2345

NORBERT J. DERNBACH
Public Relations Officer

Cafeteria Menu

Week Ending November 16, 1972

Friday, November 10	
Fish Chowder	
Fried Filet of Sole w/Tartar Sauce & French Fries	.95
Codfish Cakes & Spaghetti	.85
Baked Beef Loaf w/Savory Gravy & 1 Veg.	.90
Monday, November 13	
Cream of Tomato Soup	
Breaded Pork Chops & 1 Veg.	.95
Beef Ravioli w/Parmesan Cheese & 1 Veg.	.90
Beef Livers w/Smothered Onions & 1 Veg.	.85
Tuesday, November 14	
French Onion Soup	
Salisbury Steak w/Brown Gravy & 1 Veg.	.90
Frankfurters Rolled in Bacon w/Baked Beans & Cole Slaw	.85
Creamed Chicken on Rice	.90
Wednesday, November 15	
Vegetable Soup	
Chinese Pepper Steak on Rice	.90
Flounder Stuffed w/Crabmeat, Tartar Sauce & 1 Veg.	.90

Special Thanksgiving Dinner

Roast Turkey with Dressing, Giblet Gravy & Cranberry Sauce	
Sweet Potatoes 1 Veg.	
Pie Small Beverage	
\$1.25 plus tax	

Thursday, November 16	
Turkey Noodle Soup	
Grilled Monte Cristo Sandwich & Pickled Beets	.85
Veal Patty w/Noodles Oregano	.85
Braised Beef a la Mode & 1 Veg.	.95

Soccer

Ken Batchelor

The Soccer program is making its customary move to the gymnasium on Friday evenings at 5:30 p.m. starting on November 10th. On that day, team rosters will be filled for the winter indoor competition which will commence on Friday, November 17th. All people interested in playing in the competition should either come along for practice on the 10th or contact one of the following people.

Ken Batchelor	Ext. 4592
John McCafferty	2005
Dave Cox	3818
Ralph Fairchild	3649

Pool Schedule

Weekdays	
12:00-1:30 p.m. - Employees only	
5:00-9:30 p.m. - Employees, Family, Visitors	
Sat.-Sun.	
1:00-6:00 p.m. - Employees, Family, Visitors	

ADMISSION FEES

Daily Tickets	
Employee or Family Members	50c
Visitors	75c
Season - October 16 - February 10	
Employee or Family Members	\$ 5.00
Family - (Immediate Family*)	\$10.00

*Members of employees family residing in his or her household.

Arrivals & Departures

Arrivals

Douglas M. Carlson	Biology
Carol A. Creutz	Chemistry

Departures

Roy D. Evans	Applied Math
--------------	--------------

In Memoriam

Edward F. Yost, who had been employed in the Security and Plant Protection Division since 6/18/62 as a firefighter, died on 11/2/72.

BERA Concert Series

The first concert of the 1972-73 season will be presented on Wednesday, November 15, by the Toulouse Chamber Orchestra. Three-time winner of Le Grand Prix du Disque in Paris, this ensemble is making its second United States appearance this season.

The orchestra was founded in 1953 to fulfill the need to decentralize the musical life of France away from Paris. Engagements in France and the rest of Europe were soon followed by tours to Mexico, South America, the Soviet Union, and, in 1969-70, North America.

"The precision of the thirteen strings players throughout the full dynamic range places them among the foremost ensembles in their category." (Washington, D.C., 1970).

"Their intelligent taste mirrors sensitivity and culture." (Karlsruhe, 1967).

The concert at BNL will be held on Wednesday, November 15, at 8:30 p.m. in Berkner Hall. It will include works for string ensemble by Handel, Rameau, Hindemith and Bartok.

Season tickets and individual admissions will be sold by the following individuals:

J. Stehn	197	
C. Auerbach	197	
M. Perlman	Chemistry	
M. Gaffga	Physics	
E. Popenoe	Medical	
G. Hind	Biology	
A. Aronson	Medical	
M. Hillman	801	
E. Courant	AGS	
E. Auerbach	901	

	Series	Single
	Tickets	Admission
	(5 Concerts)	
Adults	\$12.00	\$4.00
Students		
(under 25)	6.00	2.00
Senior Citizens		
(over 65)	6.00	2.00
Under 18	Free	Free

Bowling News

Grace Fales

Green League

Congratulations to R. Barberich with his 204/224/600 scratch series, for a Club Award. Other 200's were rolled by N. Combatti 256, C. Vogel 242, C. Tomesch 240, W. Kollmer 230, C. Spence 217, F. Abbatiello 216, J. Scesny 214, E. Sperry 212, K. Riker 211, R. Jones 206, and J. Cain 202.

Pink League

At long last, the ties throughout the team standings have been broken. The Pinsplitters have moved from third to first position, with a margin of two points. The Hopefuls slipped to second but are still within a challenging range. Games/series worthy of note were Beverly Nine 172, Carol Beckner 179, Marge Stoeckel 195/484 (high game for 10/31), Ruby Burwell 490, and Pat Oster 194/491 (high series for 10/31). Honorable mention this week to Irma Montanez, 642 gross series.

Black and Blue League

It has been said by various sages and learned men that bowling is a game of concentration and inches. They did not mean if you are bowling on 23/24, you should concentrate on an "inch" long shirt on 21/22. Fortunately for the Odd Couples, Pam Spencer was concentrating on 23/24 for a 168/434. Do they sell blinders for bowlers? Other highs for the night: Frank Costello 243/583, Allan Diebel 203/548, Joe Mayeski 201, Helen Caisey 178/170/510, and Kit D'Ambrosio 170.

Red League

Highs for 10/31: R. Wilson 255/210/645 scratch series, P. Klotz 224 for the Anachems, for the Phoubars J. Ferrante 200, J. Sucher 203, R. Adams 200 for the Old Timers, D. Lingg 214, C. Buzzeo 213 for the Lucky Strikes, for the Charlie Brown's J. Baranosky 204, and for the Neutrons J. Baer 210, W. Kristiansen 201 and R. Larsen 247.

Science Index

Many Research Library users have expressed an interest in the *Science Citation Index*. This title, covering the years 1965-1969, has been loaned by the publishers for three months.

Users will find the publication in the Reference Section of the library. Comments on its usefulness are solicited and should be left with Miss Marjorie Comstock in the Reference Section of the Research Library.



Director Bob Kinsey (left) talks to the cast during final rehearsals of *Forty Carats*, opening Friday in the BNL Theatre. L to R are: Paul Alley, Physics; Jeanne Simone, Physics; Manny Hillman, DAS; Mike

Losquadro, AMD; Heather Williams, husband Brig - Physics; Charles Zavesky, Physics; Wendy Jacobson, father is Lewis - PE; Grace Schiro, Physics; David Rahm, AGS; and Lyllis Adams, wife of Richard - HFBR.

"Forty Carats" Opens Tomorrow Night

For the last eight weeks the cast of "Forty Carats" has been rehearsing and is now in the final week of polishing this diamond of a comedy. With wit and witticisms the members of three generations try to find their place and partners in life. The play also manages to enter a sane and plausible plea for a single standard of judgement on age disparity in marriage. If it is acceptable for an older man to marry a young girl, then it ought to be equally acceptable for an older woman to marry a young man. Love is a game for all seasons.

The entertainment begins at 8:30 p.m. at the Brookhaven Theatre on Friday and Saturday November 10, 11 and 17, and 18. Tickets are available before each performance at the door and from the following people:

- Christine Saitta Physical Review
- Ruth Otterstedt Applied Math
- Helen Keeley AGS
- Mary Kinsley DAS
- Claire Hull Medical
- Marian Gaffga Physics
- Eena Mai Franz Chemistry
- Betty Pergan Recreation Office

Stony Brook Events

An extensive schedule of activities open to community residents will be presented at the State University of New York at Stony Brook throughout the week. Unless otherwise noted the events are offered free of charge.

Friday, November 10

The Committee on Cinematographic Arts will show "Sunday, Bloody Sunday" at 7 p.m., 9:30 p.m., and midnight in Room 100 of the Lecture Center. A limited number of tickets will be available at the Lecture Center before each show. The film will also be shown on Saturday, November 11, same times and place.

Saturday, November 11

The Stony Brook Union will present a Kiddee Matinee at 10:30 a.m. in the Union's Auditorium. Today's program consists of three films, "The Emperor's New Clothes," "Picture for Harold's Room," and a Mr. Magoo cartoon, "Sherlock Holmes." Admission is 50 cents.

The Student Activities Board presents the Steve Miller Band and Road in concert at the University's gymnasium with shows at 7:30 p.m. and 11 p.m. Tickets are \$4 and are available at the ticket office on the first floor of the Stony Brook Union.

Sunday, November 12

The George Gershwin Music Box in Roth quad presents "Jacques Brel is Alive, Well and Living in Paris" at 8 p.m. Tickets are free but reservations should be made in advance by calling 246-7118.

The International Art of Jazz presents a concert by the Richard Davis Quintet in the Stony Brook Union Ballroom from 4 to 7 p.m. Admission is \$3 for adults, \$2 for students.

Monday, November 13

The Student Activities Board presents an informal jazz concert with the Keith Jarrett Quartet from 8 p.m. until 11 p.m. in the Stony Brook Union Auditorium.

Tuesday, November 14

The George Gershwin Music Box in Roth Quad presents "Jacques Brel is Alive, Well and Living in Paris" at 8 p.m. Tickets are free but reservations should be made in advance by calling 246-7118.

The International Student Organization presents "Barravento," a film study of an impoverished black fishing village in Brazil, at 8 p.m. in the Stage XII Cafeteria.

Tuesday Flicks presents two Japanese films by Director Akira Kurosawa, "Ikiru" and "The Lower Depths" at 4 p.m. and again at 8 p.m. in the Stony Brook Union Auditorium.

Wednesday, November 15

The third in a series of five lectures on witchcraft, voodoo and magic will be held at 9 p.m. in Room 236 of the Stony Brook Union. Raymond Buckland, high priest of the New York Coven of Witches and director of the Buckland Museum of Witchcraft and Magic in Bay Shore, will speak.

Thursday, November 16

The Center for Continuing Education presents an Italian film, "The Gospel According to Saint Matthew," at 8:30 p.m. in Room 100 of the Lecture Center. The film, a story of Christ's life, was a prize winner at the Venice Festival.

BERA Participation Awards (Jackets - Sweaters)

Are issued upon presentation of 3 Participation Cards at the Gymnasium on alternate Wednesdays between the hours of 12 noon and 1:00 p.m.: November 15, 29; December 6, 20; January 3, 17.



"Think of your years like diamonds - Forty carats, not years!" says Billy Boylan, played by David Rahm. Ann Stanley, played by Heather Williams, looks cheered by the thought. —Photos by Humphrey



Ann Stanley (Heather Williams) is not so happy as she prepares to meet the family of Peter Latham (Mike Losquadro). Mother is played by Jeanne Simone, and father by Manny Hillman.

Nassau Coliseum Tickets

Islander Hockey Tickets

Nov. 21	California
28	Buffalo
Dec. 5	Los Angeles
16	Philadelphia
21	Vancouver
23	Minnesota

Net Basketball Tickets

Nov. 15	Carolina
17	San Diego
22	Virginia
29	Utah
Dec. 1	Carolina
3	Indiana
8	Virginia
10	Memphis
15	Kentucky
17	Virginia
22	Utah

Please Note: Tickets not sold two weeks prior to a game may be purchased by those employees who already have two sets of tickets in their possession.

Employees who attend one game may purchase an additional set of tickets. (You may have two sets of tickets in your possession at all times)

Gymnasium Schedule

November 7, 1972 through April 1973

Monday	5:00-7:00	Volleyball League (Mixed)
	7:00-9:30	General Activities
Tuesday	5:00-7:00	Judo Club
	5:00-9:30	General Activities
Wednesday	5:00-8:15	Volleyball League (Men) (2 matches - 5:30, 7:30)
	7:00-9:30	Volleyball Leagues & General Activities
Thursday	5:00-9:30	Basketball League (4 games - 5:30, 6:40, 7:50, & 9:00)
Friday	5:00-7:30	Soccer League
	7:30-9:30	Tennis (by posted self-service reservation)
Saturday	9 a.m.-12 noon	Tennis (Sign up at Police Headquarters)
	12 noon-9 p.m.	General Activities (Key at Police Headquarters)
Sunday	9 a.m.-12 noon	Tennis (Sign up at Police Headquarters)
	12 noon-9 p.m.	General Activities (Key at Police Headquarters)

Rifle Club Winners

The results of the 1972 National Industrial Recreation Association-National Rifle Association (NIRA-NRA) rifle and pistol match competition are on the record.

The BNL Rifle & Pistol Club distinguished itself in the annual national and regional competition, both in the team and individual efforts.

The following results are as published in the Official Bulletin of the National Rifle Association of America.

.22 caliber rifle, individual regional award winners (238 entries - top score 189). Region I - 2nd place, Roy Domish, 188.

.22 caliber individual national ranking by scores (top score 199). Roy Domish, 20th place, score 188; Anthony Finocchio, 42nd place, score 182; Alfred E. Lukas, 58th place, score 180; W. Sapp, 68th place, score 178; B. Sapp, 162nd place, score 126.

.22 caliber rifle team national award winners (42 entries - top score 765). BNL team #1, 5th place, score 742.

.22 caliber rifle team national ranking by scores (top score 765). BNL team #1, 5th place, score 742; BNL team #2, 21st place, score 672.

.22 caliber pistol, individual regional award winners (293 entries - top score 180). Region I - 6th place, Chas. Spinelli, 176.

.22 caliber pistol, individual national ranking by scores (top score 197). Chas. Spinelli 44th place, score 176; John J. Mazzeo, 93rd place, score 169; Paul Colsmann, 113th place, score 165; Paul A. Buhl, 122nd place, score 163; John L. Barry, Jr. 153rd place, score 156; John Nicoletti, 188th place, score 145; Anthony Muscarella, 189th place, score 145; Malcolm Johnson, 190th place, score 143; Dale A. Norden, 199th place, score 140; John Zahra, 202nd place, score 139.

.22 caliber pistol team regional award winners (57 entries - top score 701). Region I - BNL team #1, 2nd place, score 694.

.22 caliber pistol team national ranking by scores (top score 751) BNL team #1, 12th place, score 694.

Square Shooters



BERA Pistol Club members pose for a picture after a victorious season. Kneeling: (l to r) John Zahra, Paul Buhl, Captain Charles Spinelli, Bob Liegel, and Paul Colsmann. Standing: Judd Diener, John Mazzeo, John Nicoletti, Jack Barry, and Bob Barberich.

Classified Advertisements

Placement Notices

Each week, the BROOKHAVEN BULLETIN lists personnel placement requisitions currently being processed. The purpose of these listings is, first to give notice of all non-scientific staff positions being filled and, second, to give employees an opportunity to request consideration for themselves or others whom they wish to recommend to BNL. In filling vacancies, the Laboratory's objective is to give first consideration to present employees, as follows: employees within the immediate group having the vacancy, employees within the department or division, employees within the Laboratory as a whole.

For further information regarding a placement notice, please contact Employment Supervisor, extension 2879 or 2882.

CRYOGENICS ENGINEER - Mechanical Engineering Division.

TECHNICIAN - Waste & Reclamation. Health Physics & Safety Division.

PROGRAMMING ASSISTANT - Applied Mathematics Department.

SECRETARY - Term of six-months. Medical Department.

REGISTERED NURSE - Permanent evenings. Medical Department.

Auto & Auto Supplies

65 CHEVY IMPALA STATION WAGON - Auto trans, ps/pb, roof rack, good shape. \$550. Ext. 3120, 286-0626.

CHEVY VAN - Good running cond. \$250. 744-9686 after 5.

69 MGB - Red, am/fm, wire wheels, good cond, must sell for school. \$1400. JU8-4766.

USED SNOW TIRES - 7.35x14 Firestone w/studs, on wheels. \$10/pr. M. Comstock, Ext. 3487.

71 DATSUN PICKUP - Best offer over \$1650. D. Henze, Ext. 4216.

71 DODGE B300 VAN - 1970 Dodge 6 cyl wagon. 281-2160, 6-8 pm.

64 CHEVY STATION WAGON - Auto trans, ps, new tires, needs minor repairs. \$175. Kennedy, Ext. 3353.

69 VW SQUAREBACK - Good running cond, auto trans. 744-6445 after 6.

70 FORD GALAXIE - 351 V8, auto trans, ps/pb, air cond, very good cond. Ext. 4149.

2-6.95x14 TIRES & RIMS - For Chevy. \$15. W. Dunne, Ext. 4452, JU1-0619.

62 RAMBLER - A real classic, \$100; 69 VW radio & speaker, \$25. Gordon, Ext. 4613.

68 MGB GT - Overdrive, chrome wire wheels, excel cond. Ext. 3741, 286-8512.

EXTRA SNOW RIMS - 13" for Falcon or Comet. Geo. Ext. 2043.

2 SNOW TIRES - 9.00x15 on rims, used 1 winter. \$25. Kay, Ext. 2457.

SNOW TIRES W/WHEELS - 6.40x13, very slightly used. \$20/pr. M. Greene, Ext. 4484.

65 CHEVY STATION WAGON - 6 psgr, V8, ps/pb, 2 new tires, new muff, clean, reliable transp. \$400. Jim, Ext. 4215.

71 PINTO - Blue, 14,000 mi, excel cond. \$1400. 289-0524 after 6.

67 T-BIRD - Yellow/blk vinyl top, excel cond, avail for insp. \$1300. M. Guacci, Ext. 2976, 732-2309 eves.

68 ROAD RUNNER - 383, 4 spd, 325 hp, chrome wheels, wide cvals, good cond, must be seen. Asking \$1600. 281-8296 after 6.

64 LE SABRE - 4 dr, ps/pb, running cond. \$100. 363-6850.

TIRES - 2-8.45x15 snow, \$5 ea; 2-9.15x15, good cond, \$15/pr; 1-8.85x15, \$5. Ext. 2907.

65 CHEVY VAN - Paneled int, side window, good cond. \$300 firm. Ext. 2969, 286-0459 after 6.

2 FIRESTONE SNOW TIRES - 6.50x13 w/wheels, less than 2000 mi. \$20. F. Leon, Ext. 2350, 475-8187.

67 TRIUMPH TR4A-IRS - Red, conv, new Dunlop tires. \$750. Ted, Ext. 4126.

14" RIMS FOR GM CARS - Priced to sell. Ext. 4640.

39 FORD WOODY - Wood perf, compl & orig, needs completion. \$2000 or best offer. JU8-4766.

69 ROAD RUNNER - Blk on blk, 4 spd, 383, 4 spd, wide ovals, mcgs, air shocks, good cond. \$1700. Vic, 727-0054.

TIRE - 7.00x14 bw, excel cond. \$9. Anita, Ext. 2000.

TIRESE - 2 ea 9.15x16, very good, \$15; 2 ea 7.60x15 snows, \$5 ea; 1-8.45x15 snow, \$5; 1-7.75x14 snow re-cap, \$3. Whitey, Ext. 2907.

68 BUICK LE SABRE - 4 dr, ps/pb, air cond. \$1250. 732-8818.

65 PLYMOUTH VALIANT - 2 dr, good transp, needs minor work. \$75. David, Ext. 4331.

62 RAMBLER - A real classic, \$100; 1969 VW radio & speaker, \$25. Gordon, Ext. 4613.

68 DODGE PICKUP TRUCK - Red, excel cond. A. Francois, 363-6527.

70 TRIUMPH - 13,000 mi, excel cond, am/fm radio, sacrifice. Mrs. Blee, 431-7243.

NEW HUB CAPS - For 69 Chevy Caprice. 475-9493.

68 MGB GT - Overdrive, chrome wire wheels, excel cond. Ext. 3741, 286-8512.

HOTPOINT REFRIG. - Good cond. \$50. AN1-2961.

69 DART - 4 dr sedan, 6 cyl, auto trans, new tires, good cond. Bob, Ext. 4343, 732-9088.

69 FALCON WAGON - 6 cyl, std trans, orig owner leaving country. \$975. D. Crennell, Ext. 3886, 929-6337.

63 MORRIS MINI 850 - Runs well, new muff ordered, should arrive before my boat leaves Dec. Offers to K. Crennell, 929-6337 eves.

69 CHEVY IMPALA CONV - Ps/pb, air cond, really like new, must see to appreciate. Carsten, Ext. 3593.

62 OLDS STARFIRE - Pwr everything & list of necessary repairs. \$40. Hartmann, Ext. 4216, 363-7260.

BEACH BUGGY - Modified VW, best offer. Jeff, 744-2955.

70 VW BEETLE - Excel cond, lt blue, 51,000 mi, must be seen, good price. C. Sampaio, Ext. 3379.

67 OPEL STATION WAGON - Good cond, good tires, 4 spd, 35 mpg. \$375. Woody, Ext. 2290.

TIRE FOR VW - 5.60x15, 4 ply Atlas tubeless, never used. \$15. 924-6728.

66 OLDS CUTLASS - Air cond, ps/pb, bckts, good tires, very clean. \$675 firm. 732-7911.

SNOW TIRES - 2-7.35x15 ww, 4 ply nylon tubeless, like new, used 2 mo. Cost \$62, sell \$35. Richie, Ext. 4254.

70 FORD FAIRLANE "500" - 2 dr hdtp, air w/full pwr, excel cond. L. Toler, Ext. 4280, 727-1412.

71 VW SUPERBEETLE - Excel cond, all access, excel tires, low mi, must see to believe. \$1750; dealer asking \$1850. Dick, Ext. 4605.

SNOW TIRES - 2-G78-15 Firestone Town & Country, belted, mounted & balanced on Ford wheels, used 1 season. \$50. K. Li, Ext. 3828, 751-7250.

71 SUZUKI TS125R - Road & trail, very good. \$350. Al, Ext. 4163.

62 CHEVY NOVA CONV - New top & trans, tuneup, good cond, reasonable. 286-1390 after 5.

66 FORD GALAXIE 500 - V8, auto trans, ps, 7 wheels, 6 good tires incl 2 snows. Asking \$400. J. Weiss, Ext. 4537/4506.

71 HONDA SL-350 - Orange, very good cond, air horns, helmet. Russ, Ext. 3397, 924-4453.

61 CHEVY ENG - 6 cyl, approx 2000 mi since rebuild, on rolling demonstration rack, see it, hear it. \$75. Rino, Ext. 4641, 273-2958 eves.

68 VW - Good cond, 2 snows, 30 mpg. \$750. Doug, Ext. 4359.

61 FORD FALCON - As is, or for parts, good tires 6.50x13, good eng. P. Adams, Ext. 2544.

68 CHEVY CAPRICE STATION WAGON - V8, ps/pb, new exhaust system & brakes, 59,000 mi. \$1450. D. Miller, Ext. 2022.

2 TIRES - 6.85x15, used for short time on Volvo. \$10 ea. H. Susskind, Ext. 4465/4461.

15" RIMS FOR VW - Also used tire 5.60x15, good for spare. Ext. 3626.

1 OLDS RIM - Will take tires from 7.35x14 to 7.75x14. J. Zahra, Ext. 4634/4667.

72 HONDA - 750 cc, w/extras. Best offer over \$1200. 588-0154.

Boats & Marine Supplies

15 1/2" THUNDERBIRD - Fiberglass tri-hull, 85 hp Evinrude elec-both 1969, pwr tilt, ss prop, tach, speedometer & 4 gas tanks, full cover, 1970 Tee Nee trailer. P. Valli, Ext. 2023.

18 HP JOHNSON OUTBOARD 1969 - Excel running cond, rebuilt last fall. \$125. 475-1832 after 4.

18" TROJAN INBOARD RUNABOUT 1959 - 70 hp Graymarine eng. J. Opkins, Ext. 3434, HR2-1097.

Miscellaneous

COLT NAT'L GOLD CUP - 38 midrange w/1 clip, auto, w/1 box wadcutters. \$165. J. Zahra, Ext. 4634/4667.

ALUM DOORS - 36 1/4x80 1/4 right-hand, 2 sargens; jalousie w/2 keys, 30 1/4x80 1/2, left-hand. 744-5871.

GAS RANGE - 30", white, sm oven, w/storage space. \$25. 924-3431.

"BLOND" MOD COFFEE TABLE - \$2; Free - 2 pr boy's pant stretchers w/\$1 purchase of phono record holder. Ext. 3655, 281-2002.

.30 CAL M1-CARBINE - W/Weaver K4 scope mounted, 5 shot clip plus 70 rounds of hunting ammo, very good cond. \$135. Len, Ext. 4675.

1972 PROOF SETS - Beautiful, some frosted coins. \$6 ea. S. Takats, Ext. 2350, 585-8395.

ALUM STORM DOOR - 36 1/2x80 1/2. \$8. S. Takats, Ext. 2350, 585-8395.

CONTEMPORARY LIV RM SET - 96" couch, chair, 2 glass end tables & coffee table, best offer. Matt, 281-6614.

WELDER'S SPECIAL - Boat trailer w/good tires, springs, shocks, etc., frame is rusted. Les, Ext. 2944.

GOLF CLUBS - Hand Craft woods 1-3-4, \$45. 71 Titleist irons 2 thru pitching wedge, \$75. B. Vogt, Ext. 4241, JU4-5198 after 6.

ASSTD ELEC MOTORS - Storm sash, plumbing tools. M. Greene, Ext. 4484.

NEW GE ELEC BLANKET - Twin size, green. \$15. Betty, Ext. 3379.

WEDDING GOWN - Size 9, full length, cleaned & boxed. Was \$100 new, sale price \$25. 286-1189.

POOL TABLE - 5'x2'9" compl w/4 cue sticks, bridge, excel cond. \$40. Jake, Ext. 4532.

RIFLESCOPE - Sears/Weaver model K2.5-2.5X, post & crosshair w/dovetail mounts, never used. Leslie, Ext. 3392.

DEEP WELL ROD PUMP - 1/2 hp, excel cond. \$40. Tony K., Ext. 3499.

SPORTS JACKETS - Boy's 12-16, \$4-\$5; green cocktail dress, \$8. Susan, Ext. 3462.

BLK METAL CHEST DRAWERS - W/matching mirror, vanity & bench, reasonable. Olsen, 286-0376.

BROILER/ROTISSERIE - Black Angus, King size. A. Munsterman, 744-5871.

MAGNUS ORGAN - W/bench, plus bks. \$20. Whitey, Ext. 2907.

TV - 25" RCA b/w, quality mahog console cabinet, excel buyer's price. Ext. 4640.

DINETTE SET - Round table w/leaf & 4 chairs, wood grain finish, almost new. \$50. JU8-7211.

PANASONIC AM/FM RADIO - Excel cond, wood cabinet. \$20. Ext. 2000.

25' HOLIDAY RAMBLER TRAVEL TRAILER - Self-contained, fully equipped, excel cond. \$3000 firm. Ext. 2470, 475-2646.

HEATHKIT IGNITION ANALYZER SCOPE - Model 1020, excel cond, 1 yr old. \$75. Frenchie, HR2-1875.

US COINS - National Geographic magazines; for the collector-antique typewriter, needs some repair, \$10. O. Booker, Ext. 4719.

DBL BED - Bookcase headboard frame w/excel Englander foam matt/box spring set. Bob, Ext. 4343, 732-9088.

BABY CARRIAGE - Lg wgt, best offer. 744-2955.

AKC DACHSHUND MALE - 5 wks old. \$50. Bob, Ext. 4254, 298-4590.

JACOBSEN ESTATE REEL MOWER - \$100; contemporary bedrm set, \$50; misc furn, best offer. 744-5261.

TAPE RECORDER - Sony model TC-200, new \$220, sell for \$90; lt wgt chain saw, \$65. Ed, HR3-8716.

AFGHAN HOUNDS - Champion sired, show & pet quality. Ext. 2902, 289-4521 after 6.

DISCUS BREEDER - Selling out fish & tanks, 1-30 gal, 3-50 gal, w/access. Moose, Ext. 4533.

HEDSTROM STROLLER - Collapsible, reclining, w/canopy. \$10. Bill, Ext. 3066.

WIRE HAIRD PUPPIES - AKC reg, champion sired, reasonable, 7 wks old, reasonable. 286-0104.

SEWING MACHINE - Singer Touch & Sew, children's model, batt or elec, good cnd, \$10. Mrs. Petruk, 286-0124.

MEN'S SKIS - W/new step-in bindings, \$30; sm dog bed & matt, new, \$5; old violin made in Czechoslovakia, good cond, \$60; guitar w/case, \$15. Mrs. Petruk, 286-0124.

SAW - 2 man type, 5' long, \$5; Craftsman jig saw, 18" throat, heavy duty, \$20. Walt K., Ext. 4089.

COLONIAL SOFA - Good cond, w/slipcovers. \$65 or best offer. Janet, Ext. 3373.

8 TRACK PLAYER - Four Star stereo am/fm, plus record player, like new. \$100. 281-8882.

54" LOVE SEAT - Beautifully upholstered, new slipcover, \$100; Gov Winthrop desk, excel cond, \$85; port-a-crib w/matt, \$15. Jim, Ext. 3044.

8 TRACK STEREO TAPE DECK - W. Lundgren, Ext. 4278, 585-3794.

SKIS - Head 65 competition, 200 cm, Saloman step in bindings, good cond. \$60. Rau, Ext. 3830.

40" CALORIC GAS RANGE - Dbl oven; empire style sofa; wardrobe trunk; GE portable hair dryer; 15 prs antique ext wood shutters, asstd sizes. Borg, 286-0428.

COFFEE TABLE - 32" round, top needs refinishing, \$20; old table radio, am/fm, \$7.50; sm elec clock, \$2.50. Wingate, 444-2078.

LEAF VACUUM - 30" grass & pavement vacuum sweeper w/4 hp Briggs & Stratton motor, like new, only used twice. Cost \$175, sell \$100. Mildred, Ext. 4636, 941-9339.

SEE LONG ISLAND FROM THE AIR - Beautiful by day - spectacular at night. \$5/person, sightseeing flights. Doris, Ext. 2441; Lou, 281-3423.

SINK & TOILET BOWL - American Standard brand, good cond, white, \$20. 473-2523.

Real Estate

Real Estate advertised for sale or rent is available without regard for the race, color, creed or national origin of the applicant.

For Sale

BELLPORT VILLAGE - Split level on priv 75'x150' lot, 3 bedrms, 1 1/2 baths, liv, din area, fam rm, study, bsmt, garage & breezeway. \$29,000. Ext. 4390, 286-8849.

100'x100' CLEAN LOT - Bellport Village, hedged & cyclone fence, good neighborhood, close to everything. 286-0376.

For Rent

2 BEDRM GARDEN APT - Nice location in Pt Jeff, avail 13/15. J. Danburg, Ext. 3865, 928-2386.

STONY BROOK - Frame house, 4 bedrms, 3 1/2 baths, avail 1/73 thru 6/73. \$350 plus util-negotiable if fewer rms required. 246-5980.

GREENPORT - Unfurn apt, 2 bedrms, liv rm, din rm, full bath, kitchen (all lg rms), walk to village & school. \$185/mo plus util. W. Stars, Ext. 4278, 324-5692 eves.

SM APT FOR SINGLE PERSON - Use of dock & garage for compact car. Below \$100, less heat. Ext. 3400.

GARDEN APT - 3 1/2 rm, unfurn, spacious & attractive, avail 12/1. 732-9088.

Wanted

PIANO - Spinnet, good cond. 585-4616.

TELESCOPE - Spot-A-Scope Baush & Lomb or Bushnell fixed w/68, 60mm objective lens, any eyepiece. John, Ext. 2268.

MUSIC STAND - For young violinist. 286-8512.

HOT AIR FURNACE - Oil fired, 100,000 BTU or larger, reasonable. Neal, Ext. 3396.

MAN'S FULL-SIZE BICYCLE - Old-fashioned 1 spd type, preferably Schwinn, good cond, reasonable. Claire, Ext. 2346.

PRE-WWII LOCOMOTIVE ENCYCLOPEDIAS - Moose, Ext. 4533.

20" BICYCLE - Foley, Ext. 3943.

METRANOME - Elec, in good cond. L. Davis, Ext. 3952/4803.

SUITABLE HOME - By 3 yr female blk Labrador, spayed, good disposition, used to children. Andy, Ext. 4210, 744-3130.

POT BELLY STOVE - Sm. Leo, Ext. 4688.

WOMAN - Shoreham area, to care for boy & girl, 7 and 11 yrs, after school, your home or mine. 744-7338.

Carpools

DRIVER WANTED - To compl existing 4-man carpool from Nassau County. Elliot, Ext. 4457.

DRIVER WANTED - For carpool from Huntington. Irv, Ext. 4581; Frank, Ext. 3270.

Lost & Found

FOUND - Near tennis court, prescription (?) sun glasses in red leather case bound in blk lacing. Claim at receptionist's desk at Medical. Ext. 3655.

Services

WATER WELLS DRILLED - Tanks & pumps installed, NY State license. Jim, 286-0615 eves.

TREE REMOVAL - Trimming, chain saw work; estimates. 727-1617.

OAK CORD WOOD - \$50/cord delivered (stacked extra). 727-1617.

EXPERT AUTO REPAIRS - Tune up & winterize special, free pick up & delivery, reasonable rates, satisfaction guaranteed, call now for free estimate. 732-9384 after 6.

OAK FIREPLACE LOGS - Custom cut, split, delivered & stacked, well seasoned. Ken. 289-8212 eves.

TREE REMOVAL & CHAIN SAW WORK - Also light hauling, free estimates. Ken, 289-8212 eves.

CARPET INSTALLED - New or pick up & relay. C. Long, 928-3598 after 6.

CUSTOM TAILORING & ALTERATIONS - Men's & women's clothing. 286-3454 after 7.

PLANNING A VACATION BY AIR OR SEA? - Call Lee, 472-0658 after 6.

HATHA YOGA FOR WOMEN - Relaxation, breath & body control through Yoga postures, sm classes, day or eve. HR2-1397.

AIR CHARTER - Comfortable, well-equipped airplane avail for business or pleasure flights; instrument rated commercial pilot. Doris, Ext. 2441; Lou, 281-3423.

.....

.....

.....

.....

Classified Ad Policy