



AEC Division Head Visits



Dr. John M. Teem, (center) who will on January 1, become Director of the AEC's Physical Research Division, toured Brookhaven on Thursday, December 14. Accompanying Dr. Teem were (left to right) Dave Schweller, Chief of Operational Safety, AEC-Brookhaven; Harvey Wegner, Head, Tandem Van de Graaff operations; Teem; Associate Director for High Energy Physics, R.R. Rau; and Physics Department Chairman, Joseph Weneser.

AEC Names Three New Division Directors

Three new AEC Division Directors were appointed recently - two to head scientific programs, the third to head the Division of Personnel.

James L. Liverman of Oak Ridge, Tenn. took over the AEC's Division of Biomedical and Environmental Research on November 1. He succeeded John R. Totter, who had held the post since 1967. Totter is now Associate Director for Biomedical and Environmental Sciences at the Oak Ridge National Laboratory where he expects to return to research work, according to the AEC.

John M. Teem, a research and development director for Xerox Corp. at Stanford, Conn., will take over as Director of the Division of Physical Research on January 1, 1973.

Teem succeeds Paul W. McDaniel who retires after more than 30 years of Federal service. He has been director of the division since 1960.

As Director of the Division of Biomedical and Environmental Research, Liverman initially will be involved in studying the extent to which the AEC's biomedical program needs to be revamped. For the time being he is working out of the AEC's Oak Ridge Operations Office; he will move to Commission headquarters in Germantown, Md., in mid-1973.

Liverman joined the Oak Ridge National Laboratory (ORNL) staff in 1964. Since 1967 he has served as ORNL Associate Director for Biomedical and Environmental Sciences.

He received his bachelor degree in biology and chemistry from Texas A&M University in 1949 and his Ph.D. in plant physiology and bio-organic chemistry from California Institute of Technology in 1952.

The Physical Research Division, which will come under Teem's supervision in January, is responsible for basic research programs in the physical sciences at AEC national laboratories and at many universities and colleges. The division's budget for Fiscal Year 1973 is about \$350 million.

At Xerox, Teem assisted in long-range planning of research programs and in forecasting the economic and sociological environments for technological projects.

Teem's research has been in lasers and related optical systems fields, plasma, instrumentation, energy conversion and also propulsion techniques for spacecraft.

He received both bachelor and masters degrees in physics from Harvard and in 1954 received his Ph.D. in nuclear physics from that University.

George S. Maharay became Director of the AEC Division of Personnel on November 13. He succeeds Donald E. Bostock who is retiring after 38 years of Federal service.

Maharay has headed the personnel and training program at the Department of Transportation since 1967. In this position he directed a program involving 92,000 civilian and military personnel and acted as advisor to the Secretary of Transportation.

As AEC Director of Personnel he will be responsible for matters relating to personnel administration under the AEC's independent merit personnel system. He will also have responsibility for organization and management directives system; staffing analysis and controls, and administration of the personnel services budget.

Maharay received his bachelor degree from Oswego State Teachers College, Oswego, N.Y., in 1941 and his masters degree from New York University in 1949.

NAL Accelerator Reaches 400 BeV

The world's largest machine for scientific experiments, a \$250-million accelerator, has generated a proton beam with twice as much energy as the original design called for, the Atomic Energy Commission announced on December 14.

At 3:46 a.m., the beam of protons in the giant machine reached the level of 400 billion electron volts, with scientists predicting that it might go 100 billion higher.

The machine built at the National Accelerator Laboratory in Batavia, Ill., was designed to operate at 200 billion electron volts. The AEC reported that recent technical advances had allowed it to increase the power supply to the magnets that guide the stream of subatomic particles through the accelerator.

Although the machine had early troubles, about 25 experiments are now being carried out by scientists from all parts of the world.

AEC Chairman James R. Schlesinger said, in a statement on the accelerator experiments, that "scientists are striving to increase man's knowledge of the basic forces and ultimate composition of matter."

Medicare Reminder

Employees' spouses who are nearing or have reached age 65 are reminded to contact their nearest Social Security Office to enroll in Medicare if they have not already done so. The Laboratory's medical insurance coverage for such dependents is based on the assumption that they are eligible to collect benefits under Parts A and B of Medicare.

An individual's Medicare enrollment period is seven months long, extending from the third month prior to the month in which he reaches age 65 to the third month following the month of his 65th birthday.

The Laboratory's supplemental medical insurance plan is provided at no cost for each dependent spouse who is age 65 or over. Therefore, any employee whose spouse has recently attained age 65 should contact Personnel Services, extension 2877, so that a premium adjustment can be made.

Bank Hours

For the convenience of Laboratory employees, the Bankers Trust on-site facility will be open from 8:00 a.m. to 12:30 p.m. on Friday, December 22, 1972.

Weekly Calendar

As there are no seminars scheduled for the week of December 25-29, there will be no Weekly Calendar issued for that week.

Donors Still Needed

There will be a severe blood shortage in the Long Island area during the first weeks of January. Unfortunately, it is of crisis proportions.

The Greater New York Blood Program will bring a bloodmobile unit to the Laboratory on January 4, 1973, in order to meet the anticipated blood demand. This is not a regularly scheduled visit but the Lab will receive credit toward the quota for 1973.

Please let Alf Christoffersen know either by phone, Ext. 3322, or fill in the blank on the back of the *Bulletin*. Appointment times will be scheduled for January 4 as on regular Bloodmobile visits.

BERA Concert Group - Special Free Concert

The Concert Group is pleased to present a piano recital by Clara B. Freedman on Sunday evening, January 7.

Miss Freedman attended the State University of New York at Stony Brook and the Juilliard School of Music, where she studied piano with James Friskin, Martin Canin and Rosina Lhevinne, and chamber music with Louis Persinger and Paul Makanavitsky. Her teachers also include Jean Casadesus and Jerome Lowenthal. She has performed in Master Classes in the USA and abroad and has concertized in both solo and chamber music performances. In March 1973 Miss Freedman will be performing in several European cities as part of her European recital debut.

Miss Freedman's recital at BNL will include works by Haydn, Schumann and Aaron Copland and will end with Schubert's great posthumous B flat Sonata.

There will be no admission charge for this concert; BERA will appreciate donations to help defray expenses.

Date: Sunday, January 7, 1973
Time: 8:00 p.m. (note change from usual time!)
Place: Berkner Hall

Vacation Credit

The maximum number of vacation days that may be carried over from one calendar year to another is 36. Monthly exempt and nonexempt employees must take any vacation days in excess 36 by January 25, 1973.

IBEW To Meet December 28

Local 2230 IBEW will hold its regular monthly meeting on December 28 at 8 p.m. in the K of C Hall, Railroad Avenue, Patchogue. There will also be an afternoon meeting for shift workers at 2 p.m. in the Union Office at 31 Oak Stree, Patchogue.

On the agenda will be regular business, the President's Report, and information of special importance to local members.

Proposals Asked For Construction of VLA

Associated Universities, Inc. is requesting proposals for the first phase of construction of the Very Large Array (VLA) radio telescope to be built on the Plains of San Augustin, 50 miles west of Socorro, New Mexico.

AUI operates the National Radio Astronomy Observatory in Green Bank, West Virginia, and Brookhaven National Laboratory.

Requests for proposals were sent to qualified proposers about December 15, according to John H. Lancaster, VLA project manager. The successful proposer will be announced next summer.

Twenty seven of the 82-ft diameter antennas will be movable along three 13-mile arms of a Y-shaped layout of railroad tracks. The twenty-eighth will be used as a spare for use when other antennas are down for maintenance or repair. The cluster of 27 antennas will provide a radio telescope with an angular resolution equal to or better than that of the largest ground-based optical telescope.

The VLA is expected to make major contributions to the understanding of the laws of gravity, the nature of gases between galaxies and the origin and evolution of the universe.

AUI plans to open an office near the site next spring.

Special Check



Fiscal Officer Barney McAlary shows a smiling Marge Stoeckel the check she will be issued for sick leave credit for 1972. Weekly employees who qualify for the reimbursable sick leave credit will receive their checks on Thursday, December 28, and Non-exempt monthly will receive their checks on Friday, December 29 along with their regular payroll checks.

BNL Holidays

(for the balance of 1972)

Friday, Dec. 22.....Half-day Holiday
Monday, Dec. 25.....Christmas Holiday

*Mon., Jan. 1, 1973.....New Year Holiday

*(This is a 1973 holiday)



Alfred M. Bjork

Ruth M. Drew



Joseph Kenny

Sadie F. Kirkup



Helen Mottl

Joseph Mottl



Marion M. Still

Year-End Retirees

Alfred M. Bjork, Machine Maintenance Mechanic in Central Shops, who began work at BNL on November 18, 1963, will retire at the end of the month.

Ruth M. Drew, a Scientist in the Medical Department, who has been at Brookhaven since October 17, 1949, will retire on December 31.

Joseph Kenny, Veterinary Services Assistant in the Medical Department, who has been employed at the Lab since January 8, 1957, will retire at the end of the month.

Sadie F. Kirkup, Office Services Assistant in the Fiscal Division, who came to Brookhaven on September 4, 1962, will retire on December 31.

Helen Mottl, Research Services Assistant in the Medical Department, who began work at BNL on February 6, 1950, will retire at the end of the month.

Joseph Mottl, a Plumber in Plant Engineering, who began work at the Laboratory on June 10, 1947, will retire at the end of the month.

Marion M. Still, Telephone Supervisor in Staff Services, who has been at BNL since June 9, 1958, will retire December 31.

Arrivals & Departures

Arrivals

None

Departures

John A. Capute	Accelerator
Claudia C. Chornoma	Physics
Florence T. Dunne	Biology
Anita S. Graves	Physics
Joanne L. Horon	Physics
Betty Mazzarella	Physics
William W. Sapp, Jr.	Physics

BROOKHAVEN BULLETIN

Published Weekly for the Employees of Brookhaven National Laboratory

CARL R. THIEN, Editor

CLAIRE LAMBERTI, Editorial Assistant

40 Brookhaven Ave. Upton, N.Y. 11973
Telephone 516 924-6262 Ext. 7238

NOBERT J. DERNBACH
Public Relations Officer

Working At Harwell

by Sol Pearlstein

On June 26, 1972, Sol Pearlstein, head of the National Neutron Cross Section Center left with his family for a six-month appointment at Harwell, England. A recent letter from Sol describes Harwell and the living conditions encountered by the Pearlstein family. Dr. Pearlstein is expected to return to Brookhaven late in January.

Harwell is located the same distance from London as BNL is from New York City. There is local train service to London but also many one-stop trains which cover the distance in less than an hour.

The 5000 people working at Harwell and the 1000 at neighboring Rutherford Laboratory investigate a range of low and high energy physics, chemical, medical, biological, and environmental problems similar to those at BNL.

In recent years Walter Marshall, the director of Harwell, has moved the Lab's work toward mission oriented problems, and financial support is now received from industry as well as the government. Individual government and conglomerate groups meet regularly with the Harwell staff to help plan the research program. Industrial research has also brought about a return of some security procedures. These new measures have met with a mixed reaction from Harwell employees. Some work with enthusiasm for the new objectives while others long for the good old days.

Excellent services are provided by the supporting groups. The main computer is an IBM-370 with time-sharing terminals placed around the laboratory.

The main research library is organized well. All new scientists are subjected to an introduction tour which I initially found belittling but afterwards very helpful. Comprehensive library services are available which are described in an attractive pamphlet. Library services are also offered to supporting industry. Widely used material is either available in multiple copies or may be duplicated by a while-you-wait Xerox service. Xerox machines are common around the laboratory but their use is controlled by lock and key arrangements. The laboratory is well staffed with supporting personnel. This has been an important factor in what I could accomplish during a six month stay.

Most employees eat in the canteen, a self service cafeteria with a large selection of hot foods and an extensive cold smorgasbord. The food is good and the prices are reasonable. I can eat very well for 30 new pence (75 cents). The cafeteria is subsidized to the extent of the equipment used by the concessionaire.

The relationship between the scientific and industrial staff is not a casual one. The industrial staff works from 7:45 to 4:30 daily. The scientific staff starts at 8:30 but finishes at 5:10 Monday through Wednesday, 5:00 on Thursday, and 4:00 on Friday. Bus service at nominal cost is provided to the lab from all nearby towns and villages at starting and finishing times. Most of the buses are the double deck type famous in London. Many workers use their own cars. Harwell employees are British civil servants. Vacation benefits and the pension plan are similar to those at BNL. Medical treatment is provided through the National Health Service.

I live about six miles from the lab in Abingdon, a town with buildings dating from the 12th century. Tradition is taken seriously. We recently stood in the town square to witness an infrequent event. Upon the occasion of the twinning (a friendship pact) of Abingdon with Lucca, Italy, 3000 buns were thrown from the top of the town hall to the people below. This custom began at the coronation of George III in 1760. The area around Abingdon shows the effects of strict zoning policies as is evident in most of England. Industrial development is limited to certain areas or estates with vast farmland and greenery between villages. In Abingdon there are a few inconspicuous fish and chip places which stay open moderately late. The only other signs of "night life" are the pubs which have typical English names such as Ball and Thistle, or Lamb and Flag. There are no neon-lit drive-ins to light up the night. A concerted attempt is made to keep English life unchangeable.

There are excellent schools in the free education system with some pluses and minuses compared to local schools at home.

Physical training and music is not emphasized to the extent we are used to. Science is promoted early in concentrated forms. PTA's exist at the discretion of the headmaster and are often ineffective in influencing school programs. My three girls each attend a different school. Some schools require uniforms. If the school is located within a mile of your home, bus service cannot routinely be expected. This school system, which presently channels 14 year old students into grammar schools for those preparing for college, and secondary modern schools for those who are not, is being replaced by a system which groups all students of high school age into comprehensive schools.

On the road there is much to get used to. While England has "decimated" its coins and plans a conversion to the metric system, She swears never, never, never to change from driving on the left side of the road. I still find myself cursing the person in the car ahead for looking around and talking instead of paying attention to the driving until I realize it is the person on his right who is driving. As a pedestrian I check the road in the wrong order before crossing. Night driving is aided by "cats eyes" reflectors imbedded in the road between driving lanes. These reflectors are particularly useful on dark roads and give the driver the feeling he is on an airport landing strip.

These are just a few reactions after working in England. Many things could be said, and I have not necessarily said them in order of their importance. The United Kingdom is a great country and the people are highly civilized with a good sense of humor. They require a good sense of humor if they are to adjust to the changes brought about by the declining Empire and the entry into the common market. As I write this note there is a governmental reorganization freezing wages and prices in order to stem the rapidly escalating prices. I detect great patience and resiliency in the English people. I have certainly enjoyed my working and social relationships with them.

Selected Reading

Sci. Am. 227, December 1972
Prematurity and uniqueness in scientific discovery. G.S. Stent. 84-93

New Scientist 56, November 16, 1972
Science and the libel court. D. Robb. 403-5

Science 178, December 8, 1972
Los Alamos: 30 years after, life begins in earnest A.L. Hammond. 1075-8

Simulated Power Plant Hearings

The simulated hearings for the SIPCO application to build a nuclear generating plant were marked by pickets from one of the intervenor groups and lengthy discussions on procedural matters at the regular Monday night session in Berkner Hall.

The hearings, conducted as a part of the In-Service Institute for High School Science Teachers are designed to give an added dimension to the course title - The Forms and Uses of Energy.

At Monday's hearing, members of "Citizens for Stability" paraded in front of the hearing officers with signs protesting the makeup of the hearing Board. One sign read - The Commission-Environmental or Political? When the hearing was officially opened, the first act of Chairman William Schaub was to direct the pickets to remove the signs from the hearing room.

Citizens for Clean and Safe Power asked for documentation of several points in their petition regarding standards for radiation release, which SIPCO VP reluctantly agreed to furnish.



SIPCO Vice President Paul Stengel (back to camera) sits in witness box during formal session of the Special Regional Planning Commission in Berkner Hall. Seated at right are SIPCO staff and consultants. At left are members of the two intervening groups, Citizens for Clean and Safe Power, and Citizens for Stability. Hearing officers are seated opposite the witness box.

Letters To The Editor

Dear Sir:

There are many persons at BNL interested in knowing where to take newspapers, glass containers and aluminum for recycling. The students of Hauppauge High School have their reclamation center open again this year. They take bottles, newspapers, and aluminum. To reach the Reclamation Center, go to the corner of Route 111 and Townline Road (Robert Hall's store is on the corner). Go down Townline Road about 1/4 mile past the Junior High School to a large sign directing you to the Reclamation Center (it is a few houses past the Junior High). Turn right and go up to the gate leading to the back of the Junior High. The Center is just inside the gate. Hours are from 11:00 a.m. to 3:00 p.m. Saturdays and Sundays. There are students there to help you unload.

Mary Hall

Diners Please Note

The Cafeteria will close at 2:00 p.m. on Friday, December 22nd, and will be closed all day on Monday, December 25th and Monday, January 1st.

The Center will be closed on Sunday, December 24th, Monday December 25th, December 31st and Monday, January 1st.

Otherwise the normal schedules will prevail. The Vended Food Service in Building 912 is available to authorized personnel at all times, and will be the only source of food on Christmas Day and New Years Day.

World of BNL

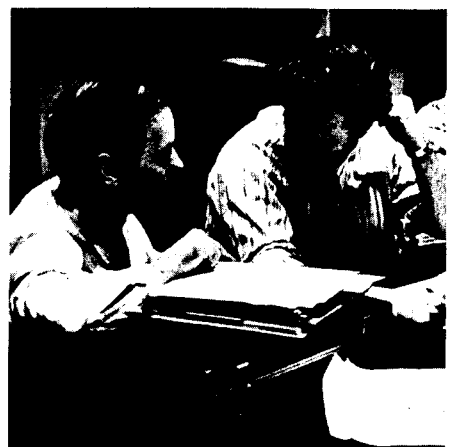
The radio program, World of BNL, is broadcast every Sunday over two AM and two FM stations, as follows: at 8:15 a.m. over WBLI-FM (106.1), Patchogue; WRCM-FM (103.9), Riverhead; WHRF-AM (1570), Riverhead; and 11:15 p.m. over WGLI-AM (1290), Babylon.

Due to scheduling difficulties, both Parts I and II of Myron Ledbetter's discussion of Electron Microscopes were broadcast last Sunday. On Sunday, December 24, Ronald Peierls will discuss Physics and Fundamental Particles (Part I) with host Norb Dernbach; Part II of this discussion will be on Sunday, December 31.

Today at 11:00 a.m., the World of BNL will be broadcast over WSHR-FM (91.9), Lake Ronkonkoma; the guest will be Bernard Manowitz discussing Atmospheric Diagnostics Research (Part II).

Carl Dippel, representing Citizens for Stability asked for and received additional time to file an amendment to that group's petition for intervention.

Hearing officers set the next public session for January 29, and warned the intervenors that all technical presentations must be prepared by that date.



SIPCO advisor Ken Hoffman studies a brief during a recess.

Bookmobile Schedule

January - June 1973

The Bookmobile, a service of The Suffolk Cooperative Library System, visits the Laboratory every two weeks. Starting with the New Year, the visits to the Laboratory will be on Friday afternoons from 1:45 to 2:15. Employees and on-site residents may borrow books, except those on reserve, for a four-week period. Reserved books may be kept for only two weeks.

The Bookmobile will stop at the corner of Technology and Brookhaven in the Applied Math parking lot on the following days:

January 12, 26	April 6, 20
February 9, 23	May 4, 18
March 9, 23	June 1, 15, 29

Recreation Facilities Holiday Schedule

Swimming Pool

Dec. 14 - 21 Normal Schedule
 Fri. Dec. 22 BNL 1/2 Holiday
 Open 12:00 noon - 9:30 p.m.
 Sat. Dec. 23 Open 1:00 p.m. - 6:00 p.m.
 Sun. Dec. 24 Closed
 Mon. Dec. 25 Closed
 Dec. 26 - 29 Normal Schedule
 Sat. Dec. 30 Open 1:00 p.m. - 6:00 p.m.
 Sun. Dec. 31 Closed
 Mon. Jan. 1 Closed

Recreation Building

Dec. 12 - 23 Reserved for Department Christmas Parties
 Dec. 24 - Jan. 1 Closed
Gymnasium
 Dec. 14 - 24 Normal Schedule
 Mon. Dec. 25 Closed
 Mon. Jan. 1 Closed
 Thurs. Jan. 4 8:30 a.m. - 5:00 p.m.
Bloodmobile Program
 (Cym closed)
 5:00 p.m. - 9:30 p.m.
 Basketball Program

Soccer

Ken Batchelor

Hofstra University 3 vs B.N.L. 2

On Saturday December 9th B.N.L. visited Hofstra University to play an exhibition game. Due to bad weather conditions before the game started the ground was very wet and a few of the B.N.L. team did not show up for the game. Consequently B.N.L. started with 10 players and one of these was borrowed from the Hofstra team. The game started with the borrowed player at full back and B.N.L. were soon one goal down due to poor defensive covering by players playing in unfamiliar positions. However, shortly after this reverse another B.N.L. defensive player arrived and the team was rearranged to move the borrowed player into the forward line. This move paid off almost immediately when a good forward movement by B.N.L. put the borrowed player in a good scoring position from which he made no mistake with a fine right foot shot. A few minutes later B.N.L. forced a corner from which they almost went further ahead but a fine save by the Hofstra goalkeeper prevented the score. Play moved rapidly from end to end with both goalkeepers making good saves. It was B.N.L. who went ahead however when Batchelor went through the middle only to see his shot parried by the goalkeeper out to the right wing. However, the ball was immediately returned to the center where it was hit home from close range.

Hofstra started the second half at a fast pace and before the B.N.L. defense had settled down the equalizing goal was in the net. As the half progressed the B.N.L. team began to feel the effects of the heavy ground and the younger and numerically longer Hofstra squad were applying continuous pressure. B.N.L. managed to hold out until with just 15 secs left to play a Hofstra half backtook a shot from outside the area which gave the B.N.L. goalkeeper no chance and won the game for his team.

After three weeks of indoor competition the strong Make-Ups team is firmly in the lead in the indoor Winter League. They have won all of their six games whereas the other three teams have won only 2 games each. Anyone wishing to sign up on any of the team rosters should either come along at 5:15 p.m. on Friday evenings or contact Ken Batchelor on Ext. 4592. There will be no games scheduled for Friday, December 22nd or 29th.

Slo-Break Basketball

In last week's basketball action Tandem defeated Biology 32 to 27. The Tandems started out burning the nets, as they scored 12 unanswered points early in the game to take a commanding lead. Bio made a game of it in the second half as Tom Jesaitis found the range with his hook shot and Lou Snead, after getting his second wind, began to grab vital rebounds. Jim Garrison played a smooth steady game for Tandem, constantly hitting the open man and keeping the team settled down when things were tight.

The Knacks defeated Medical 46 to 24 as the Medical team is finding the going very rough in the upper league thus far. The Knacks played their regular game of good team work, and good shooting to win. Dennis Nordstrum played his usual steady game as he led all scorers with 14 points. In the AMD stealer game, AMD found itself in a real contest as they just could not really get untracked, but managed to win anyway 30 to 22. AMDs' two top scorers Lawrence and Larson (the L&L boys) only scored 7 points between them. Bob McGonigle, trying to make a comeback, scored 6 points for the winners. The game was halted prematurely as two stealer players (no, Larry Johnson was not one of them) fouled out. Johnson and Tom Crew combined for 18 points as they kept the stealers close. In the last game of the night the Circuits beat Physics 30 to 23 to stay a game behind AMD. Schmidt let the circuit scoring with 12 points. Pete Stillman and Tony Baltz had 8 and 9 points respectively to lead a game Physics team.

Top 4 Scores

	Brookhaven	TP	Av	Games
1. James (Tandem)	36	12	3	3
2. Thomas (Med)	32	10.6	3	3
3. Jesaitis (Bio)	31	10.3	3	3
4. Nordstrum (Knacks)	29	9.6	3	3
National				
1 Schmidt (Circuits)	42	14	3	3
2. Johnson (Stealers)	36	12	3	3
3. Lawrence (AMD)	28	9.3	3	3
4. Larson (AMD)	24	8	3	3

Bowling News

Grace Fales

Green League

Congratulations to K. Riker for his 235/600 scratch/681 gross series, winning both his Club Awards and the Tournament's high gross series. R. Meier won the high scratch game award with 239. J. Scesny had another exceptional night with his 223/205/212/640 scratch series. Unfortunately, the Tournament did not award a prize for high scratch series, but if it's any consolation to him - "nice rollin', Joe." Other 200's were bowled by C. Bohnenblush 213, R. Jones 205, L. Jacobson 206, G. Speidell 214, D. Abeshouse 204, and R. Barberich 213.

Red League

Week of 12/5: S. Frei 210, N. Carter 212, R. Larsen 200, C. Buzzeo 223/617 series, and J. Weiss 206. Week of 12/12 E. Reams 201, P. Klutz 200, N. Carter 201, R. Nelson 203, W. Reams 201/212, G. McGovern 211, S. Frei 202, and F. Hillerud 212/245/611 scratch/716 gross series, winning both Tournament prizes for high scratch game and high gross series.

Pink League

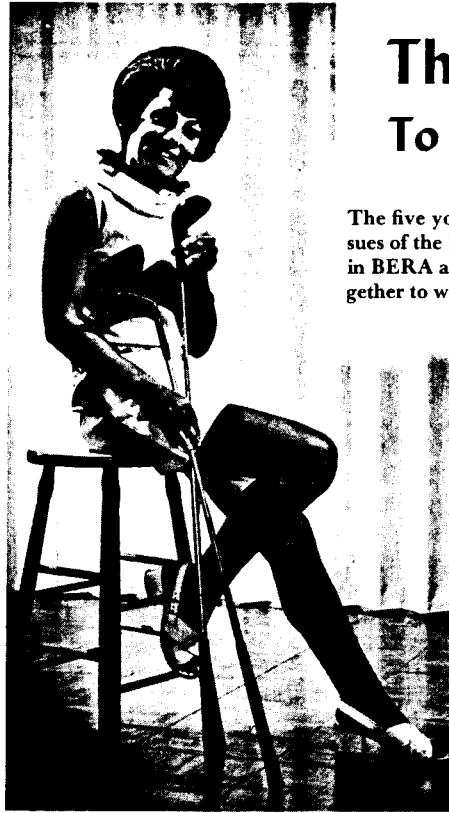
With everyone thinking of the holidays, only 2 gals concentrated on bowling for at least one good game; Ruby Burwell of the Alley Oops managed a 189 and Pat Oster of the Spares rolled a 193. The Special Event winners were: high gross series Irma Montanez 675, high scratch game Pat Oster 193. Irma is also the first gal in the Pink League to earn a BERA Award for gross series over 666 - hardy congratulations!!

Black & Blue League

On the special event the winners were Helen Caisey, 620 high gross series and Ralph Taylor, 232 high gross game. Highs for the night were: Ralph Taylor 201/508 (who won the Special Events Hi Gross Game with a nice 232), Helen Caisey 193, 170/524 (won the Special Events Hi Gross Series with a 620). Bill, remember 199 + 1 = 200 all the time.

The Season's Best To All Bulletin Readers

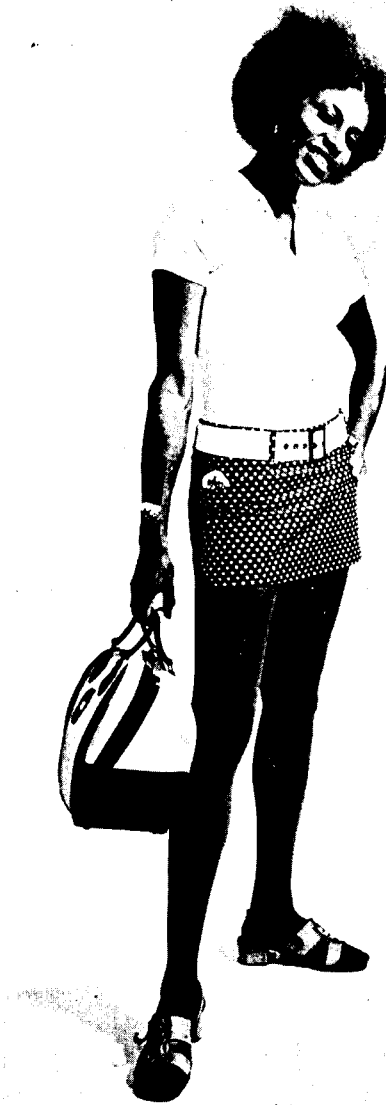
The five young ladies pictured here have appeared in past issues of the Bulletin to advertise the advantages of participating in BERA activities. They, and the staff of the Bulletin, join together to wish you the best of wishes for the holiday season.



Fran Demarco



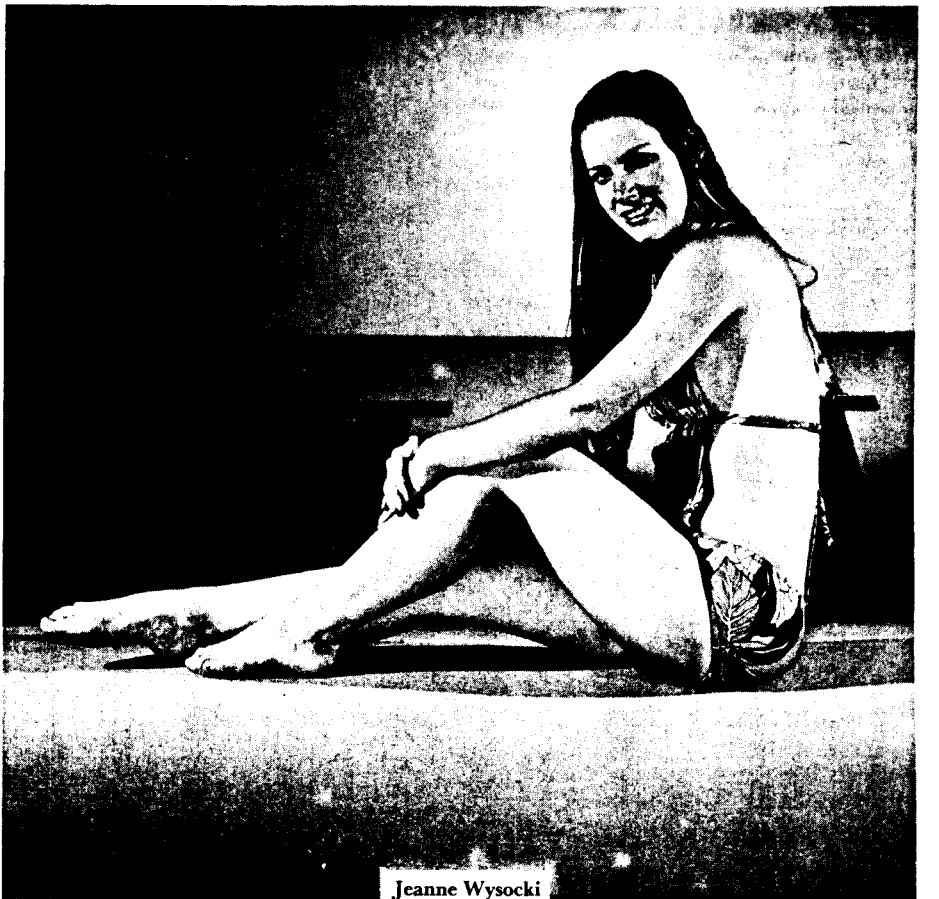
Barbara Bartolomy



Ruby Burwell



Margaret Schubert



Jeanne Wysocki

Ticket Services

The following tickets are available at the Recreation Office, 58 Brookhaven Avenue between the hours of 9:00 a.m. and 1:00 p.m.

Opera Tickets

We still have tickets available for the following performances:

Jan.	2	Otello
	3	Pique Dame
	4	Un Ballo In Maschera
	9	La Traviata
	11	La Fille De Regiment
	15	La Fille De Regiment
	18	Pique Dame
	22	La Fille De Regiment
	25	Macbeth
	30	Aida
	31	Macbeth
Feb.	1	La Boheme
	12	Norma
	15	Macbeth
	15	Salome
	20	Salome
	22	Rigoletto

Nassau Coliseum Tickets

Islander Hockey Tickets

Dec.	21	Vancouver
	23	Minnesota
Jan.	2	Atlanta
	9	Los Angeles
	16	Minnesota
	23	California
Feb.	1	Chicago
	3	Buffalo
	6	Toronto
	20	Pittsburgh
	24	Detroit
	27	Chicago

Net Basketball Tickets (\$6.50 seats for \$4.00)

Dec.	22	Utah
Jan.	3	Carolina
	5	San Diego
	10	Carolina
	12	Virginia
	17	Denver
	19	Memphis
	21	Dallas
	31	Virginia
Feb.	2	Dallas
	4	San Diego
	9	Indiana
	11	Memphis
	19	Dallas
	23	Carolina
	25	Indiana
	28	Memphis

Please Note: Ticket Sale unlimited, you may purchase any number of tickets for as many events as you wish.

Cafeteria Menu

Week Ending December 28, 1972

Friday, December 22	
New England Clam Chowder	.99
Riviera Broiled Stuffed Flounder	.95
Poached Filet of Sole w/1 Veg.	.85
Chili Con Carne on Rice	.85
Monday, December 25	
Cafeteria Closed - Happy Holidays	
Tuesday, December 26	
Vegetable Soup	
Manicotti w/Meat Sauce & 1 Veg.	.90
Short Ribs & 1 Veg.	.99
Pork Chow Mein on Rice w/Crisp Noodles	.95
Wednesday, December 27	
Turkey Noodle Soup	
Corned Beef & Cabbage w/Boiled Potato	.99
Spaghetti w/Italian Sausage & Peppers	.95
Grilled Chopped Beefsteak & 1 Veg.	.90
Thursday, December 28	
Onion Soup w/CROUTONS	
Veal Parmigiana w/1 Veg.	.95
Braised Chicken Leg & 1 Veg.	.90
Baked Stuffed Green Peppers & 1 Veg.	.90

Classified Advertisements

Placement Notices

Each week, the BROOKHAVEN BULLETIN lists personnel placement requisitions currently being processed. The purpose of these listings is, first to give notice of all non-scientific staff positions being filled and, second, to give employees an opportunity to request consideration for themselves or others whom they wish to recommend to BNL. In filling vacancies, the Laboratory's objective is to give first consideration to present employees, as follows: employees within the immediate group having the vacancy, employees within the department or division, employees within the Laboratory as a whole. For further information regarding a placement notice, please contact Employment Supervisor, extension 2879 or 2882.

TANDEM VAN de GRAAFF OPERATOR - Shift work, Physics Department.

Autos & Auto Supplies

57 WILLYS JEEP - 4 w/d. \$600. 475-5143.
62 CORVAIR - 2 dr, passed insp last mo, runs well, good tires, new muff. \$100. Ext. 3593.
69 CHEVY NOVA - V6, snows, excel cond. \$1350. 286-8696 after 5.

63 MERCURY COMET CONV - 6 cyl, std shift, good running cond. \$150. 281-5894 after 6.

ROVER 2000 TC - Red, factory air, very good cond; new brakes, master cylinder, manifold & exhaust; am/fm/sw radio optional. \$1290. Rick. Ext. 3979.

66 CORVAIR - Needs valve work, clean body, 2 new snows, 2 never used rebuilt carbs, auto trans, r/h. \$75. Rogers, Ext. 3164, 751-1557 after 7.

2 TIRES - Good cond, 6.85 x 15, previously used on Volvo. H. Susskind, Ext. 4465/4461.

70 CAMARO - V8, ps, p/disc brakes, auto trans, am/fm radio, new tires, vinyl roof, 38,000 mi. \$2200. 286-1423.

2-15" RIMS - 5 holes. Both/\$8. Bailey, Ext 3260.

FRONT BRAKE SHOES FOR VW - \$5; 6.40x13 tire, w/rim, free w/purchase of brake shoes. Tony, Ext. 3636.

FM CONVERTER - For auto 12v radio works well. \$25. P. Sparrow, Ext. 4680, 727-4859.

56 TEE BIRD - Excel shape & running cond. Asking \$3100. Tony, 581-0174 after 6.

EXTRA SNOW RIMS - 13" for Falcon or Comet. Geo., Ext. 2043.

14" WHEELS - Fit big Pontiacs & GM cars, \$6/pr; carb & manifold for 65 Rambler, \$7. Bob, Ext. 4652, 289-0357.

69 PONTIAC TEMPEST - 4 dr, auto trans, 6 cyl, moving, sacrifice. Elsie, LT9-1587 after 6.

66 FORD 1/2 TON PICKUP - Like new, 4 spd. \$925 or best offer. 288-9744 after 5:30 (except weekends).

HANDYMAN SPECIAL - 65 Chevelle, 40,000 mi, needs trans work & damage to left rear. \$100. Jim, Ext. 4652.

SNOW TIRES - L78-15 Firestone 4 ply w/w, studded, like new. \$25 ea or 2/\$40. Andy, Ext. 4210.

69 VOLVO 142S - 2 dr, auto trans, good cond, best offer. 246-6528.

65 CORVAIR - Runs. \$50 firm. 588-5833.

REGULAR DUTY TIRE CHAINS - 7.10x15, 6.70x16, light (sm truck); single chains, 7.10x15, \$2.49 ea. Ext. 2237.

64 PLYMOUTH BELVEDERE - 6 cyl, needs work, good body, best offer. Rolf, Ext. 4028.

70 PONTIAC GTO - Perf cond, full pwr, ac, many extras. H. Spiess, Ext. 4417, 475-1951.

67 FALCON - Excel cond, must see, 6 cyl, r/h, 4 dr, good tires, low mileage. \$800. Ext. 4530, 286-0716 eves.

62 GMC CARYALL - Runs well, good tires. \$225. 286-2415 after 6.

68 CORVAIR MONZA - Mint cond. 744-5261 after 6.
62 FORD FALCON - Std shift, 2 dr, running. \$50. R. Phillips, Ext. 3833.

71 KAWASAKI - 500 cc, 6000 mi, windshield, s-bags, s-bar, r-bar, dir, helmet. Asking \$850; extra bike/util trailer, \$75. Al, Ext. 4151.

60 VW - 168,000 orig mi, not beautiful but mech sound, good transp. Jean, Ext. 3298, 878-2172.

63 CHEVY PICKUP - 1 ton, V8, 9' body, 2 new hd tires, heater, body in good cond. \$525. Jim, Ext. 4215, 727-5134.

66 CHEVY BISCAYNE - 4 dr sedan, 6 cyl, good tires, new brakes, just inspected, good cheap transp. \$650. Ext. 3593.

66 FORD GALAXIE 500 - V8, auto trans, ps, 7 wheels, 6 good tires incl 2 snows, a fine Xmas gift. Asking \$375. J. Weiss, Ext. 4537/4506.

68 FORD BRONCO - 4 w/d, 289 V8, full cab, needs eng work, runs fine. \$1000. Bette, Ext 4105, 281-7763.

DISC BRAKE PAD SET - Raybestos (safety lock) No. PGP-D1, bought for 70 Ford LTD then sold car before using. \$17. Bernie, Ext. 4783.

Miscellaneous

8 TRACK STEREO TAPES - List avail, all tapes new. 2/\$5. C. Nielson, Ext. 4280.

UPRIGHT PIANO - Horace Waters, dk brown. \$200. J. Olson, 289-8629.

GIRL'S BICYCLE - Good cond, \$15; check writer, \$15; Jacobson 18" reel mower, \$50. 286-8346.

HAIR DRYER - \$10; Ladies' ice skates, size 7, \$3; elec broom, \$8. 286-8346.

SKI BOOT - Youth 6, \$5; ladies' ice skates, 5 & 7, \$5 ea; child's 3, \$2. 473-7739.

VANITY & CHAIR - \$10; jr guitar, \$10, excel cond. 473-7739.

BABY'S FOLDING DRESSING TABLE - Padded top, clothing bins, \$8; old brown wicker stroller-carriage, \$8. 727-1617.

POLAROID CAMERA - Model 95B, wink light attachment, very fine cond. \$25. B. Espensen, Ext. 3992.

CHILD'S SNOW SUIT - Size 6x. \$8. Jerry, Ext. 3334.

CHILD'S ICE SKATES - Blk, like new, size 4, \$5; used 20" boy's bike, banana seat, \$10. Jerry, Ext. 3334.

CANADIAN FLYER ICE SKATES - Hockey type, never used, size 5. New \$13.97, now \$10. B. Espensen, Ext. 3992.

8 TRACK STEREO TAPE DECK - \$15. W. Lundgren, Ext. 4278, 585-3794.

HO TRAINS - 3-Rivarossi engs, 22 cars-tyco & AMH, 3 automated switches, turntable, track, etc, new, very good. E. Pecan, Ext. 3397.

GERMAN SHEPHERD PUPS - AKC reg, bred for size, temp & markings, due end of mo. W. Hulak, Ext. 3353, 732-2248.

ICE SKATES - Woman's white, figure, size 8, 1 yr old, good cond. \$5. 286-8256.

BARTH ELEC GUITAR - W/amp, \$40; wet suit, size lg, \$55. Spencer, Ext. 2310, 286-9658.

6' LAWSON COUCH - Green, excel cond. G. Perry, 475-3468 after 6.

GREAT DANE PUPPIES - AKC, fawns, golden brindles, show stock, must be seen, will hold until Xmas. Ext. 3464.

SEWING MACHINE - Singer portable, old but in good cond, w/attach. \$25. P. Sparrow, Ext. 4680, 727-4859.

COMMERCIAL SEWING MACHINE - G8526401, good cond. \$75. Ext.2547, 281-5328.

GIVE A PLANTED TERRARIUM FOR XMAS - Scenes in fish tank or reg terrarium bowl, hours of enjoyment for the nature lover. Diane, 728-1728.

NEW GENTS' DIAMOND RINGS - Direct from manufacturer, below wholesale prices; will also set your diamonds in a new modern ring. R. Horwitz, Ext. 4134.

SKI PANTS - Boy's size 14, excel cond, \$5; ice skates, men's size 8, like new, \$6. T. Morris, Ext. 3968.

GIRL SCOUT UNIFORM - Permanent press, no belt, size 7-8. \$4. 744-5096.

POLAROID LAND CAMERA - \$20; girl's ice skates, size 3, \$1.50. 744-8087 after 6.

CORNET - Besson silver plated, very good cond. \$80. Bill, Ext. 2236, 283-3675.

ELEC LAWN MOWER - W/grass catcher, a great Xmas present. Ext. 3120.

PUPPIES - Sm mixed breed, 4 males, 2 females, free. E. Kaplan, 878-0797.

ICE SKATES - Girl's size 3 1/2, best quality, excel cond. Cost \$17 new, a steal for \$6 incl guards. Andy, Ext. 2424.

ALTO SAX - Excel cond. Cost \$245, sell \$150. Ted, Ext. 4661, LT9-2470.

BOY'S 10 SPD BIKE - Excel cond, extras. \$75. 281-6277.

ICE SKATES - Boy's size 11 & 13, bullet trap, new. \$25 289-2697.

BASS GUITAR - Univox, 2 pickups, immaculate cond w/case. \$55. 581-0932.

MEDITERRANEAN BEDRM SET - 6 pcs. Cost \$700, sell \$175. 878-2879.

CB SET - General Radiotelephone MC-6, extra crystals, electronic switching D-104 desk mike. \$80 firm. Ext. 3082.

WINCHESTER - Model 94 30-30, \$65; Savage 12 gauge dbl barrel shotgun, \$55. 878-2879.

R/C CAR - Kyosha McLaren scale Porsche super tigre .23 installed, ready for R/C gear, excel. \$30. 473-2806 after 5.

EMERSON 23" TV & STEREO - Am/fm multiplex stereo radio, walnut cabinet, perf cond. \$175. R. DiLello, Ext. 4549, JUB-1464.

BLK LABRADOR PUPPIES - AKC reg, ready to go by Xmas. 286-2295 after 6.

FREE - For adoption, short hair collie, papers, loves children. Ext. 4731.

USED DBL SINK - Free-you pick it up in Bellport. Don, Ext. 4648.

BEDRM SET - \$50. Bob, Ext. 4615.

19" RONSON DELUXE BROILER - Excel cond. Cost \$54, sell \$25. Ted, Ext. 4661, LT9-2470.

MOTORCYCLE HELMET - Stars & stripes, lg size. \$13. F. Rumph, Ext. 4581.

ICE SKATES - Boy's size 4 (figure), good cond. \$3. Charlie, Ext. 3499.

COMPL CW & AM AMATEUR RADIO STATION - Elmack 65w. Rolf, Ext. 4028.

SX99 REC - 550 KHS thru 30 Mhz. \$60. Rolf, Ext. 4028.

DREXEL DIN RM SET - 9 pcs, compl w/pads. Asking \$300. 473-4779.

PIANO - Powers spinet, excel cond, w/bench. Asking \$400. 475-2409.

WET SUIT - Used 1 season. \$25 firm. 475-7827 after 6.

STEEL WAGON - 28x13x3 1/2", 7" wheels. \$2. J. Olson, 289-8629.

ENLARGER - Durst M-300 w/Schneider Componar 50 mm lens, used twice, like new, disassembles-easy transport & set up. Dahl, 286-0379.

REMINGTON NOISELESS TYPEWRITER - \$15. Stan, Ext. 3284.

OIL TANK - 275 gal, good cond. \$25. 475-6509.

SAMOYED MALE PUP - Lovable, pedigree 8 mos, needs fenced yard & is very good w/children. Asking \$200. Marie, 286-3864 after 6.

FURN CLEARANCE - Marble top coffee table, end tables, gray valpak (\$15) lamps, metal kitchen base cabinet, kitchen china cabinet, glassware. R. Vogt, 286-0692.

BIGELOW ACRILAN CARPET - Moss green, fully padded, 63 yds, 2 yrs old, excel cond. \$425. 567-1613.

ANTIQUe SETTEE - Needs some work, best offer. 286-3742.

US & FOREIGN COINS - Old (78) phonograph records, old elec train set. O. Booker, Ext. 4719.

Real Estate
Real Estate advertised for sale or rent is available without regard for the race, color, creed or national origin of the applicant.

For Sale
MATTITUCK - Looking for all yr round home, in prime location near village? This 1 1/2 story cape cod w/3 bedrms, liv rm/fireplace, 2 1/2 baths, din rm, kitchen, util rm, 2 car gar, on corner 1/2 acre, just for you at \$60,000-Principals only. W. Stars, Ext. 4278, 324-5692 eves.

For Rent
STONY BROOK - Frame house, 4 bedrms, 3 1/2 baths, avail 1/72 thru 6/73. \$350 plus util - negotiable if fewer rms required. 246-5980.
SHIRLEY - Studio apt, furn, priv bath, util, gentleman, avail Jan. 281-8044.
FURN RM - TV, some kitchen privileges. W. Lundgren, Ext. 4278, 585-3794.

Wanted
SMALL LATHE - Don, Ext. 4648.
HOME FOR POODLE - 3 yrs old, spayed female, excel w/children. 289-0687.

2 RIMS - For E78-14 tires on Nova. Ext 3268.
USED STEREO EQUIPMENT - Reasonable. Bob, Ext. 4652, 289-0357.
SLIPCOVERS FOR SECTIONAL - Beige, orange, gold or green-solid print. 727-1617.
FOR LATE MODEL 283 (1967) - AB manifold & Roch 4GC carb, solid flywheels (2), oil pan. Jack, Ext. 3512.

Carpools
DRIVER - For carpool from Huntington. Irv, Ext 4581; Frank, Ext. 3270.
Services
TREE REMOVAL & CHAIN SAW WORK - Also light hauling, free estimates. Ken, 289-8212 eves.
OAK CORD WOOD - Delivered \$50/cord (stacked extra); tree service-removal, cutting, chain saw work, trimming, estimates. 727-1617.

OAK FIREPLACE LOGS - Custom cut, split, delivered & stacked, well seasoned. Ken, 289-8212 eves.
SKI MADONNA, STOWE & JAY - At lodge w/BNL friends in new chalet, home-like atmosphere, reasonable rates. LT9-0277 after 6.
RUSTY WATER? - Use time-tested micromet in your water system. 281-5050 after 6.

PLANNING A VACATION BY AIR OR SEA? - Call Lee, 472-0658 after 6.
HATHA YOGA FOR WOMEN - Relaxation, breath & body control through Yoga postures, sm classes, day or eve. HR2-1397.
UPTON NURSERY SCHOOL OPENING - For 3 yr old of lab employee, 2 or 3 days/wk. K. Lambrecht, 653-4195.

BABYSITTING - Will do babysitting in my home, Monday-Fri, experienced mother. 281-4345.
SEE THE NEW MINI SNOWMOBILES - Compl machine or kits. For info & literature call Hank, Ext. 3499, HR2-0553.
SEE CHRISTMAS LIGHTS FROM THE AIR - Just like Santa. \$5/person or ask about family rate. Doris, Ext. 2441; Lou, 281-3423.

EMERGENCY PHONE NUMBERS	
Medical	2222
Fire	3333
Police	4444

Classified Ad Policy

Deadline is 12 noon Friday for publication the following week.

- The Brookhaven Bulletin's classified section may be used only by active and retired Laboratory employees.
- All items for sale or rent must be the advertiser's property.
- Ads for material acquired for resale in association with a full or part-time business cannot be accepted.
- Firearms offered for sale or trade may not be brought on site.
- Ads not carried because of space restrictions will be held for publication in the next issue.
- Ads are run only once and must be resubmitted if they are to be repeated.
- Ads should be restricted to 20 words or less and typed or printed on the form provided, and must bear the employees signature.

For Sale: Auto & Auto Supplies Wanted
 For Sale: Boats & Marine Supplies Carpools
 For Sale: Miscellaneous Lost & Found

Check the heading applying to your ad. Print or type your ad in 20 words or less.

Ads concerning property for sale or rent cannot be accepted on this form. Special Real Estate Ad forms are available at the Office of the Brookhaven Bulletin, Room 112, 40 Brookhaven Avenue.

(Name & Phone No. To Call)

Employee's Signature Life No. Ext.

Send to: Brookhaven Bulletin, 40 Brookhaven Avenue