



BROOKHAVEN BULLETIN

Published by the Brookhaven National Laboratory Public Relations Office



Volume 28 - Number 2

January 11, 1974

Gloomy Outlook



Traffic entering the North Gate on Wednesday morning at 8:30 a.m. was only a small amount compared to normal usage. Slick roads and reduced visibility kept many employees from arriving at their usual time.

Transport Survey Forms, Maps Mailed

By now all employees should have received their transportation survey questionnaires in the interoffice mail.

Official survey maps have been distributed throughout the Laboratory to aid employees in determining their home grid numbers.

Representatives from Personnel will be available to each department during the period between January 14 and January 25 to assist employees in this and to collect the completed survey forms.

In addition, a transportation survey information booth will be manned at the cafeteria each day between the hours of noon and 1 p.m. to assist in any way possible.

The survey is being conducted for two reasons. First, to provide interested Laboratory employees with information that will assist them in the formation of carpools. Second, the survey information will provide the Laboratory with a grid-density report, which will be useful in planning mass transit service to the Laboratory in the event future fuel restrictions become more severe.

The completed survey forms will be forwarded to the General Services Administration (GSA) for computer processing. Although GSA is performing the same function for the Internal Revenue Service and many other government agencies, the information obtained from individual Laboratory employees will not be made available to any other institution.

Only those who specifically indicate on the form that they wish to participate in carpool matching will be included in that project. The names of employees who indicate they do not wish to join carpools will not be included on any of the matching reports. Employees who indicate their desire to be included in carpool matching are under no obligation to accept any of the computer-generated matches that will be distributed to them.

It is hoped that each employee will complete the questionnaire since the greater the number of employees who participate, the more valuable the grid-density report will be in negotiating bus service in the future, should that become desirable.

When the survey forms have been processed by GSA, individual sheets will be distributed to employees who have indicated their desire to be included in carpool matching. These sheets will contain the names of other employees so inclined who live in or near the same home grid.

Theatre Group Meeting

The BERA Theatre Group will have a meeting Thursday evening Jan. 17 at 8 p.m. in Room A of Berkner Hall.

Members will be reading scenes from plays being considered for a Spring production: William Alfred's "Hogan's Goat" and Tom Stoppard's "The Real Inspector Hound." All interested persons are invited to attend.

Concert Wednesday

The third concert of the 1973-74 season will be presented on Wednesday, January 16, by the Eastman Brass Quintet at 8:30 p.m. in Berkner Hall. This ensemble has given widely applauded concerts in the United States, Canada, and Latin America. Their recordings have achieved for them international acclaim through intonation, accuracy, and overall musicianship. The Eastman Brass Quintet is truly "the American brass sound in all its glory" (The Sunday Star, Washington, D.C.). Tickets are \$3.50 for adults, \$1.75 for senior citizens over 65 and students with I.D., and free for those under 18.

New In Personnel

On December 3, 1973, Willie T. Drinks joined the Personnel staff where he will assist Richard B. Schonberg in the administration of the Laboratory's salary and wage program.



Willie is a graduate of Hofstra University where he earned his BS in Economics and an MS in Business Administration. He is a Viet Nam veteran and comes to the Laboratory after two years as Executive Director of the Hempstead Economic Opportunity Council, Inc. Prior to that he was Assistant Director of the Inhalation Therapy Department of Peninsula General Hospital, and an Instructor of Economics at the Roosevelt Cooperative College.

Willie, his wife, Michele, and their young son Michael presently live in Hempstead, but are planning to move closer to the Laboratory as soon as possible.

FICA Change For 1974

As a result of recent legislation in Congress, Social Security (FICA) contributions are increased in 1974. In 1973, both employee and employer contributed 5.85% on the employee's first \$10,800 in annual wages for a maximum tax of \$631.80. In 1974, the tax rate will remain at 5.85% but the taxable earnings base will increase to \$13,200 for a maximum tax of \$772.20. This represents an increase in the maximum tax of \$140.40.

For those employees whose annual salaries are in excess of \$10,800 there will be a longer period of Social Security deductions from their paycheck in 1974 than there was in 1973. The impact of this change is reflected in the table below:

If your salary is:	Weekly	
	FICA	Annual Tax Increase
Less than \$207.69	No effect	
\$215.00	\$ 22.23	
\$225.00	\$ 52.65	
\$235.00	\$ 83.07	
\$245.00	\$113.49	
\$253.85	Maximum	\$140.40

If your salary is:	Monthly	
	FICA	Annual Tax Increase
Less than \$900.00	No effect	
\$ 925.00	\$ 17.55	
\$ 950.00	\$ 35.10	
\$1,000.00	\$ 70.00	
\$1,050.00	\$105.30	
\$1,100.00	Maximum	\$140.40

Energy Tip For Home

If a husband and wife, who keep the furnace thermostat at 68 degrees when at home, both will be away at work all day, what setting would produce maximum fuel savings?

About 60 degrees, estimate experts of the National Bureau of Standards on the basis of a well-insulated home, an outside reading of 30 degrees when they leave at 8 a.m. and 50 degrees when they return at 5 p.m. The saving would more than offset the extra fuel needed to reheat the house to 68 degrees after they come home.

IBEW TO Meet Jan. 24

Local 2230 IBEW will hold its regular monthly meeting on January 24, 1974, at 8 p.m. in the K of C hall, Railroad Avenue, Patchogue. There will also be an afternoon meeting at 2 p.m. for shift workers in the Union office at 31 Oak Street, Patchogue. On the agenda will be regular business, committee reports and the President's report.

Weather?

Terrible!

Snow. Followed by more snow. Rain, turning to sleet and ice, followed by stuck cars and more bad weather.

For the past week Brookhaven Lab and Suffolk County have joined the rest of the Eastern United States in trying to cope with the seemingly constant run of bad weather.

Last winter the total amount of snow that fell was less than three inches. This year with the winter season only beginning, we have already had more than a foot of the white stuff already, and promises of much more before this edition of the Bulletin is distributed.

While Laboratory roads were cleaned fairly early during Wednesday's storm, the county and town roads leading to the Lab were not very good at times when most employees were on their way to work.

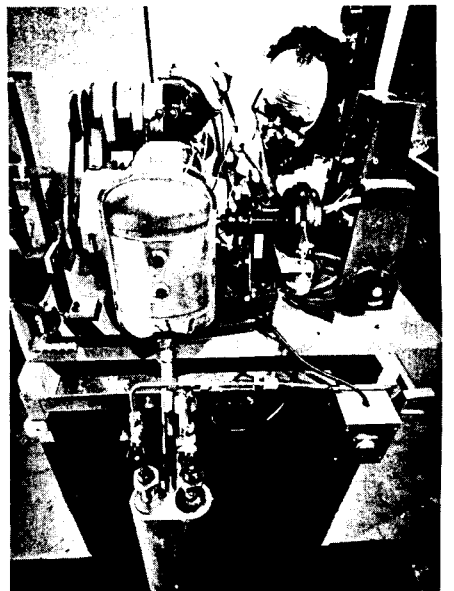
Several minor incidents occurred on site during the storm, but generally traffic kept moving and operations were almost normal except for the increase in absent employees who were unable to get to the Lab because of poor road conditions.

Forecasts are for more of the same over the weekend, so a full report on the series of storms will be made in the next issue of the Brookhaven Bulletin.

Italians Film The Wankel



Flavia Gregori of the RAI (Italian television) New York news bureau, interviews Richard Wiswall of DAS about his work with the Wankel engine. Miss Gregori and four members of the RAI film crew visited BNL on January 3.



Al Holtz of DAS gets the Wankel ready to be fired up for the Italian film crew.



Cameraman Cesare Fontana takes some close-up footage of the Wankel. The film was dubbed in Italian and shown on Italian TV on Jan. 5.

