



BROOKHAVEN BULLETIN

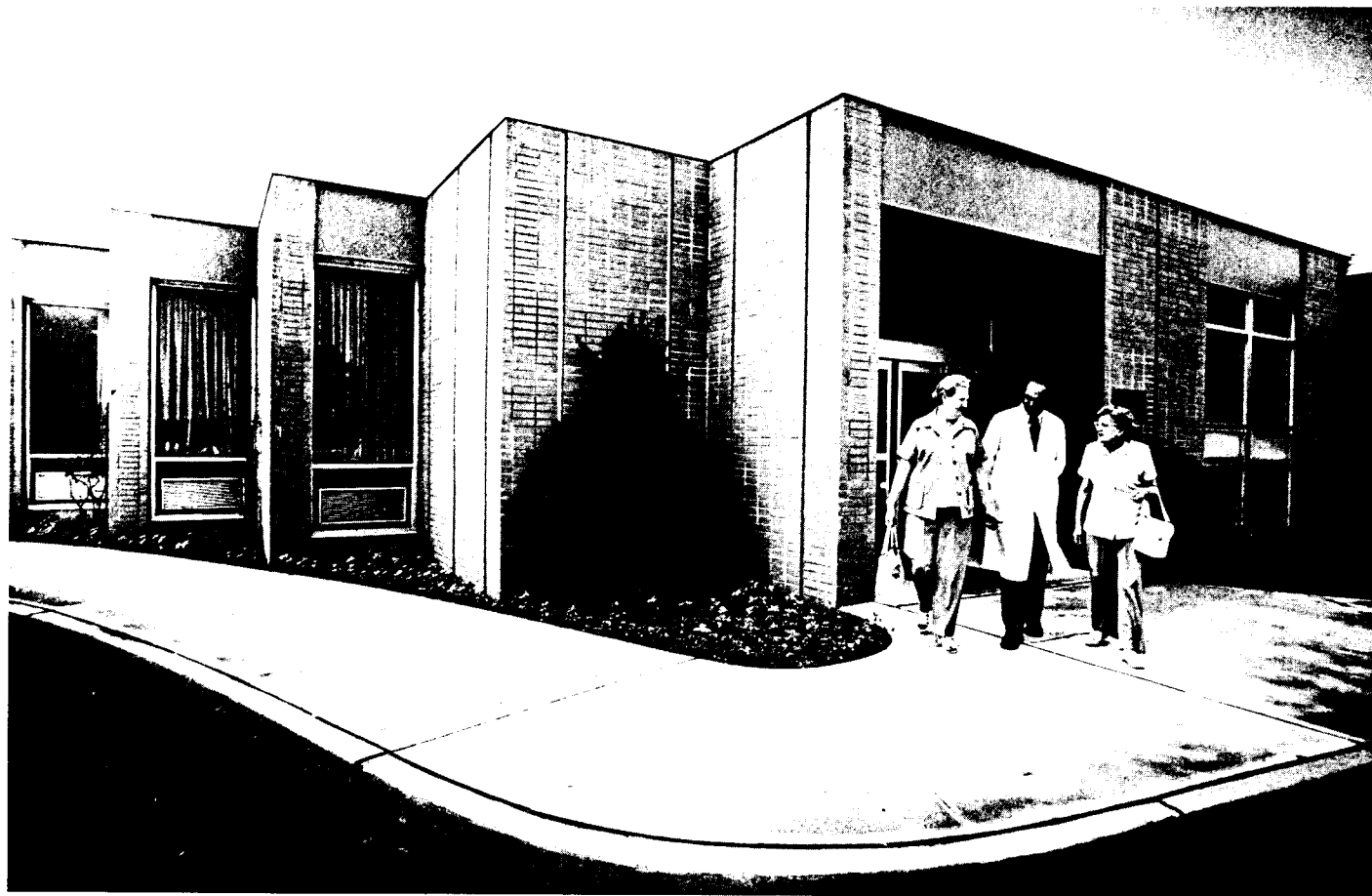
Published by the Brookhaven National Laboratory Public Relations Office



Volume 29 - Number 25

June 20, 1975

New Wing In Use



Dr. Italo Zanzi discusses treatment with two outpatients leaving the reception and examination wing of the Hospital of the Medical Research Center.

New Wing Opens To Patients At Medical

On June 2, research patients were seen for the first time in the recently completed wing of the Hospital of the Medical Research Center, adjoining the Industrial Medicine Clinic. The addition was built specifically as a reception and examination area for research patients.

The area is spacious and comfortable and provides research patients with more privacy than they had before. Hospital Administrator John Holder explained that many research patients are elderly and not ambulatory, tending to attract attention. "The new area gives them a sense of dignity," said Holder.

In the past, research patients coming to BNL on an outpatient basis for examination to be admitted to the Hospital, shared the waiting room in the Industrial Medicine Clinic with BNL employees. Although research patient visits are scheduled, most visits to the Industrial Medicine Clinic are not, with the exception of annual employee physicals. Therefore, there was no way of



Relatives wait while patient is admitted.

ideally controlling the congestion at the clinic each day.

This problem has now been alleviated by the new wing which has its own waiting room. There are also two examining rooms, an admission office and reception room, a



Jean Matkovich, outpatient receptionist, and Maureen Sacker, nurse, check medical records in the reception area.

storage room for records and equipment and an office area. It also has an outside entrance separate from the Industrial Clinic.

SUNY Proposes Use For Empty Beds

Officials of BNL and Stony Brook are discussing the "lease" of 22 empty beds in the Hospital of the Medical Research Center at BNL in an effort to aid the teaching and research program at the Health Sciences Center at Stony Brook, which will not have its projected 540-bed university hospital for a few years.

Two of the four pavilions in BNL's Hospital have been used only minimally for some time now, and would make an ideal place for the Stony Brook program to get its start. The proposed program would be funded through a \$1.8 million annual budget administered through the Health Sciences Center. Surgeons and professional staff would be supplied by the medical school, and nursing and supporting personnel would be supplied by BNL.

According to officials from Stony Brook, the medical program for the 22 beds most probably would include provision for a burn treatment center, a program for the repair of small body joints and a microvascular reconstruction division.

Brookhaven National Laboratory is presently one of the Health Science Center's clinical campuses. Approximately 20

MD's or PhD's from the BNL staff have appointments in the Health Sciences Center at Stony Brook, to instruct and train students in clinical research. This program will continue and will be materially augmented by the 22-bed hospital unit. The remaining 22 beds will continue to be operated by BNL for its own research programs, and many of the sophisticated diagnostic tools and laboratory facilities will be shared by both programs.

On Tuesday, officials from BNL and the University attended a joint meeting of the Long Island Health and Hospital Planning Council and the Nassau and Suffolk Counties Comprehensive Health Planning Council, seeking approval for the utilization of the 22 unused beds by Stony Brook.

It is hoped by SUNY and BNL officials that the facility can be in full operation before the end of the summer, or as soon as all necessary approvals and legalities are completed.

Reminder For Parents

This is a reminder that June 27 is the deadline date to register your child or children in the Children's Summer Program.

Applications are available at the BERA Sales & Services Office in the Cafeteria or at the Personnel Office.

Call Ext. 2873 for information.

CREF Unit Values

1974			
January	\$40.75	February	\$40.83
March	39.32	April	37.58
May	35.11	June	34.29
July	31.71	August	29.09
September	25.39	October	30.27
November	29.23	December	28.35
1975			
January	\$30.67	February	\$32.80
March	33.77	April	36.12
May	\$38.07		

Tennis Ladder

The tennis ladder is off to a good start for 1975. Through June 13, a total of eight matches had been played for the women's singles ladder, and 39 for men's singles.

The top five spots on each ladder are: women - 1. S. Iwai 2. C. Saitta 3. V. Emery 4. G. Williams 5. E.-M. Franz; men - 1. T. Koetzle 2. N. Bhagat 3. E. Platner 4. R. Casten 5. F. Martin.

Let's keep up those challenges. BERA participation cards will be awarded at the close of the season to all members who have played at least four matches. Members should also be reminded that those not playing for six consecutive weeks will be dropped from the ladder.

New Shingle In The Marshall Islands

There will be a new face in the Marshall Islands this summer when Dr. Konrad Kotrady replaces Dr. Knud Knudsen as BNL's resident physician and hangs his shingle on the residence door.

Dr. Kotrady officially joined the Medical Department staff last week. His main interests lie in the fields of public health care and epidemiology. He is looking forward to his work in the Marshall Islands, where he believes he will have the opportunity to pursue his interests.

Dr. Kotrady recently completed his second year of residency in family practice at the University of Utah Medical Center. He received his B.S. in chemistry from Yale University and attended medical school at the State University of New York at Buffalo where he received his M.D. degree.

For 20 years a medical team from BNL, headed by Dr. Robert Conard, has been making annual trips to the Marshall Islands to examine the Marshallese who were accidentally exposed to radioactive fallout during a Pacific bomb test in 1954. A resident physician was first established on the islands in 1972 to maintain continued surveillance and treatment. Dr. Knudsen was BNL's first "island doctor." He returned to the Lab last October after a little over two years in the Marshall Islands.

The process for selecting a replacement for Dr. Knudsen began almost a year and a half ago when an advertisement was placed in the New England Journal of Medicine and the Journal of the American Medical Association. Out of the many who applied for the position and personal interviews for those seriously considered, Dr. Kotrady was selected. "We think that Dr. Kotrady is well suited to the job he will be doing," commented Dr. Conard.

Last week, Dr. Knudsen flew out to the islands with Dr. Kotrady to orient the new physician to the work he will be doing. Dr. Knudsen will remain there for one month, taking Dr. Kotrady around to all the islands.

Dr. Kotrady will live in Kwajalein, a town of 3000 people, on the atoll of Kwajalein. Although his house will be there he will spend most of his time on Ebeye, a small island five miles from Kwajalein, and Majuro. Four times a year he will visit people on the outer islands of Rongelap, Utirik and Bikini.

His primary responsibility will be to keep a continuous check on the exposed people and to be certain that those with thyroid abnormalities continue their treatment. Due to the shortage of medical personnel on the islands, he will find himself spending almost 80 percent of his time administering general health care, said Dr. Conard.

Dr. Knudsen recalls the challenge of being a physician in the Marshall Islands because of the variety of health services he was required to perform. He found himself delivering babies, pulling teeth and treating cases of fish poisoning. But his greatest professional interest was in the high

(Continued on page 2)



Konrad Kotrady

They're Here Again

As of Monday, June 9, 64 new faces have appeared at Brookhaven National Laboratory. Establishing an unprecedented 24th year, the Summer Student Program is once again underway.

Of the approximate 600 applications received, 64 students from as far away as San Francisco State and as close to home as Stony Brook University, have arrived to begin a 15-week program as research assistants in the life and physical sciences.

Their first day at the Lab began with registration and the "infamous" safety lecture. On Wednesday, June 11, an informal reception was held in Berkner Hall for all participants, Drs. R.C. Anderson and Glenn Price were there to describe salient features of the BNL complex and answer questions. Several tours have been scheduled. On Monday, June 23, a tour of the Tandem Van de Graaff will be held by Harvey Wegner. The High Flux Beam Reactor will be visited on the following Monday, June 30, with Michael Brooks serving as guide. A tour of the Alternating Gradient Synchrotron on Monday past was hosted by Julie Spiro. The students are also encouraged to attend general and departmental seminars. Recreational activities are scheduled throughout the summer as well.

Selection of the students is based on their aptitude, a requirement of B average or better, their particular field of research and faculty recommendations. Preference is given to those who appear to be especially interested in research and teaching and whose choice of field coincides with research in progress at the Laboratory.

This summer there are eleven students assigned to the Accelerator Department, three to Applied Math, eleven to Applied Science, six to Biology, five to Chemistry, one to the Director's Office, six to Health Physics and Safety, one to Instrumentation, eleven to the Medical Department and eight to Physics.

Paul Newman, a student from Swarthmore College, who is assigned to the Physics Department, was introduced to the program six years ago when his sister came to work as a summer student in biology. Now, he is here too, working with professionals in his field. Paul was greatly impressed by the abundance and resources of equipment available, and is looking forward to a rewarding summer.

"The interaction between the experienced professionals at Brookhaven and the new fresh ideas of the students on the program, gives them both an added benefit of a mutually satisfying experience," comments Ann Mauro of the Academic Relations Office, who has followed the program through from applications to registration.

The program is supported by the Energy Research and Development Administration (ERDA).

Cafeteria Menu

Week Ending June 27, 1975

Monday, June 23

Corn Chowder
Beef Liver & 1 veg. 1.05
Scrambled Eggs, Sausage & fr. fr. 1.00

Tuesday, June 24

Beef Noodle Soup
Knockwurst & Sauerkraut 1.05
Sauerbraten & Potato Pancake 1.25

Wednesday, June 25

Cream of Potato Soup
Beef Chop Suey on Rice 1.00
Special

Davy Jones Fish Fry \$1.25 plus tax

Thursday, June 26

Chicken Vegetable Soup
Cheese Ravioli & 1 veg. 1.00
Roast Chicken w/ Stuffing & 1 veg. 1.05

Friday, June 27

Clam & Celery Soup
Spaghetti w/ Clam Sauce 1.00
London Broil & 1 veg. 1.25

Official & Special Events

Monday, June 23

NYU Student Tour

Wednesday, June 25

Chamber Music Concert - Berkner Hall - 8:30 p.m.

AUI Trustees Meeting (June 25-26)

Thursday, July 3

Floating Holiday

Friday, July 4

Holiday - Independence Day

New Wing Open



Dr. A. Vaswani chats with a patient in the reception area of the new wing of the Hospital of the Medical Research Center.

New Doctor (Continued)

incidence of diabetes among the Marshallese.

Approximately 25 percent of all adults there are diabetics. For the last several years, the BNL medical team has been conducting a diabetic survey, in cooperation with the Trust Territory Medical Services, to determine the cause of the prevalence of diabetes.

One of the greatest frustrations of living in the Marshall Islands, recalls Dr. Knudsen, was transportation between the atolls and around the atolls themselves. While he was there he had to depend upon the erratic schedules of the Trust Territory cargo ships. Not only were their comings and goings erratic but they were dirty and poorly maintained. Due to poor navigational equipment on board it was not uncommon to be lost at sea for a couple of days.

The transportation situation became increasingly difficult for both Dr. Knudsen and the whole medical survey program. Fortunately, the problem was solved when the U.S. Army furnished what was then the AEC with an overhauled landing craft utility (LCU) for use by the medical teams. It is named the *Liktanur* after a Marshallese folklore goddess of the sea. Although the LCU is much slower than the cargo ships, it is clean and has the advantage that it can be beached for easy access.

With the availability of the LCU, Dr. Kotrady will not be faced with the transportation problem which confronted Dr. Knudsen. In addition, there will be a fully equipped medical trailer on board the LCU, complete with doctor's office, x-ray machine, laboratory and a small medical library. When Dr. Knudsen was working in the islands, he had to carry all his medical supplies by hand aboard the cargo ships.

Dr. Knudsen was accompanied on all his trips by his wife, Liv, who is a registered nurse. Because of her training, she was of considerable help to him.

Back at the Lab, Dr. Knudsen has set out to computerize all the medical and radiological data collected in the Marshall Islands over the last 20 years by the BNL medical team. Once Dr. Kotrady's term in the islands comes to an end, in a year and a half, Dr. Knudsen will accompany the BNL medical team on its surveys, the next one being in March.

1700 Attend 21st ANS Annual Meet

More than 25 staff members and former staff members were listed on the program of the 21st Annual Meeting of the American Nuclear Society held in New Orleans from June 8 through 13. While most of the BNL delegation were presenting papers in the technical sessions, several scientists chaired sessions or were members of panels.

In addition to no-nonsense committee meetings and technical sessions, there were formal luncheons and dinners as well as informal tours of the French Quarter at the close of the nightly working sessions. The tourist crowd along Bourbon Street was occasionally treated to the sight of a nuclear scientist doing sociological research of an informal nature.

The American Nuclear Society met in the New Orleans Marriot for all business and technical sessions. The technical program, consisting of some 600 papers given in 96 sessions over five full day and one evening session, kept a lot of attendees away from the enticements of the outside world.

George Fischer, DAS, represented BNL at the Professional Placement Service Center, where he attempted to recruit engineers and scientists for nine openings in the Fast Reactor Safety program. Joe Hendrie and Powell Richards were session chairmen, as were a former staff member, Leonard Galanter. Herb Kouts, another former staff member, and John Papazoglou served as panelists. The balance of the BNL attendees either came to present papers, or were members of standing or special committees.

Included in the list of authors of papers presented at the technical sessions were: G.J. Dienes, A.K. Agrawal, W.A. Higginbotham, E.V. Weinstock, E. Beardsworth, J. Powell, Meyer Steinberg, Vi Duong Dang, H. Ludewig, J.L. Usher and Arthur J. Buslik.

Also O.W. Lazareth, P. Tichler, R. Benenati, J. Fillo, S. Majewski, T.V. Sheehan, R.D. Gazzer, M.S. Kazimi, F.J. Salzano, Wen-Shi Yu and J.S. Milan.

Selected Reading

Science 188, June 6, 1975

White House science adviser: You can go home again. R. Gillette. 995+

VITA: Appropriate technology for the Third World. 1000

Science support: Is high energy physics at home in ERDA? W.D. Metz. 1003

Sci. News 107, June 7, 1975

Super scientists of the media. R. J. Trotter. 370-2+

U.S. News World Rep. 18, June 9, 1975

Low scores in science tests - another problem for schools. 43

BROOKHAVEN BULLETIN

Published Weekly for the Employees of
Brookhaven National Laboratory

CARL R. THIEN, Editor
JEAN BURKE, Assistant Editor
CAROL GOLDSTEIN, Copy Preparation

40 Brookhaven Ave. Upton, N.Y. 11973
Telephone 516 345-2345

French Chamber Music Concert



A program of chamber works by Ravel, Fauré and Debussy will be presented in Berkner Hall on Wednesday, June 25, at 8:30 p.m. sponsored by the BERA Concert Committee and the French Group of BNL. Rehearsing are (left to right) Edith Perrow, violin; Donald Caldwell, viola; and Olga Zilboorg, cello. Catherine Speh, piano, is not shown. The program will honor the centenary of Ravel's birth. Admission will be \$2.00.

Bowling Champs



The Red League Champs, the overall BNL league winners, are (left to right): Skelly Frei, Ralph Nelson, Dick Adams, Walt Reams (captain) and Neal Carciello.



The Black 'N Blue League Champs are (left to right): Irv Montanez, Irma Montanez, Peg Taylor, Ralph Taylor (captain), Dot Pollack and Budd Pollack.



Elections were held for the next BERA bowling season. Pictured above are Frank Short, the new president; Marge Stoeckel, the outgoing president and Irving Montanez, the new vice-president.

Arrivals & Departures

Arrivals

Victor Quan App. Science
Allan L. Rosenthal Biology
Ridgway Scott App. Math.
Regina W. Tracy Director's Office

Departures

None

Bus Schedule Revised

Last week the *Brookhaven Bulletin* printed a time schedule for the buses from the Tide Transportation Corporation. That timetable has been revised. Buses will go north and south with departure from the Lab at 9:25 a.m., 10:42 a.m., 11:30 a.m. (to Smith-aven Mall), 2:29 p.m., 4:45 p.m. and 6:15 p.m.

Questions about the service can be answered best by the Tide Corporation at 281-6660 or 269-4939.

Diners Note

The Cafeteria will be open from 9 a.m. until 2 p.m. daily on Thursday, Friday, Saturday and Sunday, July 3rd through July 6th.

The Center Club will be closed on Thursday, Friday and Saturday, reopening at 5 p.m. on Sunday evening, July 6th.

The Vended Food Service in Building 912 will be in operation continuously.

REMEMBER
BNL BLOOD DRIVE
JUNE 26 - 27
HAVE YOU PLEDGED?



Pink League Champs are pictured (left to right): Grace Fales, Marge Stoeckel (captain), Renie Rasati, Beverly Nine and (not pictured) Rosalie Piccione.



The Green League Champs are (left to right): Bob Jones, Ed Meier, Charles Bohnenblusch, Bob Meier (captain), Ken Riker and Arthur Dick.

Softball

Dick Ruffing

Brookhaven League

The Blue Jays remained the only undefeated team in the Men's League as they defeated Metallurgy 10 to 1. George Oldham made his pitching debut a successful one having three strike outs, four assists and 2 for 3 at the bat. Nick Pisco had a 3 for 4 night, Herm Haller was 2 for 4 with 4 RBI's and Bob Meier 2 for 3 with 3 RBI's.

The Old Timers kept the race close with a 16 to 5 win over the Ravens. Jim Roesler and Neil had home runs, and Skelly Frei was 4 for 4 for the Old Timers.

National League

The Six Pax continued their winning streak by defeating the Circuits 15 to 6. Ed Meier was 4 for 4 and Lenny Kalmar 3 for 3 with a home run for the Pax.

The Hawks knocked the Dirty Sox from the unbeaten ranks as they scored 18 runs to two for the Dirty Sox.

No score was reported on the game between the Bubble Boys and Medical.

Laboratory League

Rained out.

University League

Ralph Helmy went 5 for 5 at the plate as the Diamonds defeated the RBI's 17 to 9.

Our Gang stayed close to the defending champs Oh Kays for three innings but the big factor of Ken Sutter and Leroy James coupled with the determined fielding of third baseman Helen Caisey and the swift running of rookie Rosemary Mack put the game out of reach with the Oh Kays winning 14 to 7.

Hospitality News

For the months of July, August and September the monthly coffees will be "Evening Get-Togethers."

The first get-together will be held Monday, July 7, from 8 to 10 p.m. in the Recreation Building in the Apartment Area.

Mrs. Bunny Schaefer will show us her outstanding button collection.

Please come, chat with your friends and neighbors, and meet newcomers.

Call For Bottles Is Off

The Department of Applied Science no longer needs those brown bottles you've been cleaning and dropping off in the dumpster at the corner of 6th Street and Brookhaven Avenue.

The supply they have is large enough for the new project, and many thanks to all those who helped with their vitreous contributions.

Classified
Advertisements

Placement Notices

Each week the Personnel Office lists personnel placement requisitions, currently being processed. The purpose of these listings is, first, to give notice of all non-scientific staff positions being filled and, second, to give employees an opportunity to request consideration for themselves through the Personnel Office. In filling vacancies, the Laboratory's objective is to give first consideration to present employees, as follows: employees within the immediate group having the vacancy, employees within the department or division, employees within the Laboratory as a whole.

For further information regarding a placement notice, or to request consideration for an available position, contact Supervisor, Personnel Placement & Development, extension 2874 or 2882.

129. TECHNICIAN - Temporary position. Department of Applied Science.

130. PHYSICS ASSOCIATE - Physics Department.

131. REACTOR SHIFT SUPERVISOR - Reactor Division.

132. DRIVER (LIGHT) - Temporary assignment. Supply & Materiel Division. Application deadline: June 27, 1975.

133. CUSTODIAN - Plant Engineering Division.

Autos & Auto Supplies

CAMPER - 73 Ford van, pop top, fully equip, ps/pb, under 20,000 mi. \$4975. 298-4315.

74 HONDA XL 175 - Street & trail, 75 mpg, 700 mi. 281-6325 after 5.

72 CAD - Sedan DeVille, full pwr, lo mi, new tires, gd cond, blue. 744-8949.

67 CAD - Coupe DeVille, full pwr, int gd. needs body work. 744-8949.

3 RADIAL TIRES - 1.65x15 Pirelli tubeless, ww, sev 1000 mi left ea tire. \$5 each. 732-5829.

69 FIAT 850 - Coupe, low mi, needs body work. 286-0880.

71 FORD GALAXIE - 4 dr V8, auto, ps/pb/ac, radio, new tires, ex cond, 62,000 mi. \$1500 firm. 345-2441, 286-0932.

68 BUICK RIVIERA - All pwr, ac, gd cond. \$1100. Murdock, Ext. 4291, 878-1441.

MAG CHROME WHEELS - 15" dish type, like new. \$115. Suzanne, Ext. 2441.

73 SUPER BEETLE - Blue, sunroof, am/fm, 35,000 mi. \$1900. Manny, Ext. 3532, 924-6937.

VW MOTOR PARTS - & bumper, make an offer. Dale Miller, Ext. 2022, 281-8579.

64 PLY VALIANT - Gd work car, 20 mpg +, less than 30,000 mi on eng. \$225. Ext. 4725, 473-8716.

69 PLY FURY III - 4 dr sedan, sm V8-318, auto, r&h, gd trans. \$1000. 878-2026 after 5.

66 PLY FURY - Sta wagon, gd cond. \$400. H. Barry, Ext. 3412, 878-2162 eves.

68 CORVETTE - Convert, 2 tops, new eng, clutch, brakes & tires, ex cond. \$3000. 581-0932.

47 PLY - 4 dr sedan, r&h, 6 cyl, 3 spd, 57,000 mi, used daily, old but reliable, will trade for import or sell. Make offer. 281-4475 after 8.

63 VW - 57 eng, runs, needs work & tlc, manuals & parts. \$95. Ext. 4257.

TRAILER HITCH - For 72-73 Merc Montego, \$20; girl's bike, hi riser. Dale Miller, Ext. 2022.

UNIROYAL - Guardian, ex cond, H78-15. \$25/pair. 473-2664.

63 PONTIAC - 68 lo mi eng, new exhaust & elec sys, clutch, heater, radiator, radials, int/ext ex, 17 mpg, best offer. Joan, 924-8595 after 5:30.

67 VW ENGINE - 52 hp, 12V, still running. \$65. Bill Sanchez, Ext. 3354.

73 DATSUN 610 - Air, auto, new radials am/fm, 21,000 mi. Asking \$2850. Tom, Ext. 3525.

72 HONDA - 350cc, ex cond, elec start. \$750. Howard, 878-2399.

RIMS - 2 chrome reverse, \$20/pair; 2 chrome key-stone mag, \$30/pair, all 14" Ford. Mike Tesla, Ext. 3284, between noon & 12:30.

Boats & Marine Supplies

21' FLEETWING - Mako type fg boat, teak trim, cntr cons, 2 fishing chairs, df, 115 hp Merc, tandem galvan trailer, much more. Ext. 3120, 286-0626.

19' DAY SAILOR - SS hull & fixed keel, ex cond w/ trailer. Ext. 3922.

H-15 SAILBOAT - Fiberglass, alum mast, dacr sails, 6' beam, stable & comfortable. \$1000. 473-5406 eves.

32' BALTZER - Twin 125 hp Chrys, less than 40 hrs on eng, camper back, incl summer dockage at Week's. 331-1718.

23' LUHRS - Ready to use, overhauled, new paint, inboard mar gray eng, oak lapstrake hull, new bilge pump, new starter. 589-0461, 589-5689.

16' TRI-HULL - 73 Merc eng 50 hp, 74 galv trailer, sell w/without trailer. \$1250. 588-5833.

67 WINNER - 23' cuddy cabin, 120 hp in/out, s/s, ex cond. \$3000. Murdock, Ext. 4291, 878-1441.

12' LONE STAR - Alum anchor, oars w/floatation chambers. \$100. Ext. 3499, 732-1913.

DEPTH INDICATOR - Heathkit digital, nvr used, new \$140, sell \$100. Bob, Ext. 4411.

16' WINDMILL - Racing dinghy, Queen of Bay winner 1970. 2 sail sets, floatation, trailer. \$850. Campbell, 286-3675.

Classified Advertisements

Boats & Marine Supplies

18' INBOARD - 4 cyl, \$50. Dale Miller, 281-8579.
27 1/2 55 HP BEARCAT - 4 cyl outboard, completely overhauled. \$550. Ext. 3332, 941-9034 eves.
OUTBOARD - 5 hp. \$50. 286-0497 after 6.
17' CLAM BOAT - Wooden, 40 hp Johnson, \$450. 929-6803.
14' MCKEE CRAFT - 68, 55 hp Johnson, well maintained, vg cond, in water. \$1200. 286-0271.
CLAM RAKE - 22 tooth sand & mud head, long & short handle. \$40. 286-0271.
14' SAILBOAT - Fiberglass, mainsail, 2 jibs, very stable, very dry, gd cond. \$600. 878-4214 eves.

Miscellaneous

GAS STOVE - White, refrig/freezer, white. Best offer. Ext. 2445.
 SLR OUTFIT - Minolta SR1b w/55 mm/f 1.8 & 100 mm/f 3.5, recent fact overhaul, cases & accessories \$289-1646 after 6.
 DINING RM TBL - Dbl ped, Sheriton, \$150; auto telecaller, new, \$35; 2 bookcases fruitwood, \$150; swimming pool pump, \$35. Paul, Ext. 3575, 744-6433 after 6.
 PACHYSANDRA - Flats of 25 plants. \$3.50. 929-4522.
 SHINGLES - 3 bundles self-sealing, black roof. \$5. Neal, Ext. 3396.
 AIR COND - Norge, 8000 btu/12 amp, used one summer. \$100. 286-0866 after 6.
 BICYCLE - Phillips 3 spd, racing handles, nvr used. \$75. 286-0866 after 6.
 ELECT STOVE - \$50; old trunks, porch furn, other oddsies; living rm furn. 878-4214 eves.
 DESK LAMP - Avocado, \$8; B&D port saw w/accessories. \$20. 744-5871.
 EANS - 3 prs, sz 32-31, \$3 ea. 744-5871.
 ABLES - 2 step; 1 cocktail; 2 lamps w/shades. 732-6266.
 GAS RANGE - Sears Classic 30, dbl oven, vg cond. \$50. 732-6993.
 HEATHKIT - Vectorscope/color gen mod 10-101. \$100. George, Ext. 3783, 732-6647.
 DISHWASHER - Gen elec, port, mobile maid, cutting board top. Mirta, Ext. 3102.
 MASS AMP - Acoustic 360, ex cond. \$575. 286-1454 after 6.
 TERE0 - 4 spd auto, Garrard changer, gd cond. Judy Davis, Ext. 4505.
 DIAMOND - Antique cut, unset, .13 carat. \$15. Frank, Ext. 4581.
 FRIG - 4 cu ft Domestic, propane, for trailer, includes roof vent, side & louvers. \$75. Ext. 4504.
 IGH CHAIR - Gd cond, best offer. 744-8356.
 ABY CARRIAGE - 1 yr old coach. \$75. 744-8356.
 ASSINET - Complete w/net & skirt, yellow. \$30. 744-8356.
 ABY BEDRM SET - Crib, 2 dressers, white, ex cond. Asking \$200. 744-8356.
 FRIG - Hotpoint 21 cu ft, 1 yr old, extra features. Corrairie, Ext. 2528.
 ISHWASHER - Kitchen Aid, imperial model, convert, white, 9 mon. \$250. 286-0259.
 NIMAL CLIPPER - Sm Oster. \$25. Goldman, Ext. 589.
 AMPS - 1 pr custom decorator, Venetian glass, etc, shades incl. \$45 each. 475-8658 after 7.
 APE PLAYER - Stereo 8 track, for auto, sm sz, w/speakers. \$35. Richie, Ext. 4254, 734-7342 after 6.
 ABY ITEMS - Jolly jumper, \$4; swing, \$4; crib, \$12; coach carriage, \$30; stroller, \$15; back baby carrier, \$2. L. Arnold, Ext. 2024, 281-2136.
 ELESCOPE - Monolux mod 4328, 15x30x45x60x60 mm w/stand. \$15. 475-8658 after 7.
 ONDA - Trail bike 70, 1971, 7800 mi, fully equip. \$1185, cost \$735. Porcario, 732-8818.
 M FISHTANK - Gd cond, free. Joan, 924-8595 after 7:30.
 SHTRAY - Bisque cherub standing, goes w/provinced urn, brand new, best offer. Kathy, Ext. 2496.
 BL SAW - Craftsman w/many blades, daddo knives attach, near new. \$250. Ext. 3922.
 RIB - W/mattress, Edison colonial, dbl dropside, stabilizing bars. \$30. 732-7607.
 ABY CARRIAGE - Perego, like new, converts to stroller. \$30. 732-7607.
 CARRIAGE - Bilrite coach w/mattress, blue. \$65. 732-7607.
 ISHWASHER - Gen elec, mobile maid, swyngomatic. Mirta, Ext. 3102.

BABY ITEMS - Carrier seat, gd cond, \$5; carrier, \$5. O. Booker, Ext. 4719.

RADIO - Upright solid state am/fm/pw, port, \$7; medicine cabinet, sz 14"x22"x4 1/4", brand new, \$7. O. Booker, Ext. 4719.

POOL FILTER - Filter flow mod 1000 on wheels, \$25; mod 400, 1/4 hp, \$17. Ext. 4240.

FLOOR POLISHER - Attaches to vacuum, new cond, \$45; beach umbrella, green & orange canvas, \$5. Ext. 4240.

FALL - Real hair, ex cond, 2-way wearing, ash blonde. Ext. 2528.

WASHING MACH - GE, 14 lb, top-loading, copper, gd cond. Asking \$95. 286-2779 after 6.

FREE PUPPY - Cute little puppy. Mrs. Viller, 475-2640.

66 AVALON - 17' Travel trailer, sleeps 6, self-contained, stove & refrig, clean. Asking \$1700. Frank, Ext. 4095.

RADIATORS - Cast iron, 23" high, 1-16 sections, 1-16 sections. \$20. Frank, Ext. 4095.

LAWN MOWER - Sears 3 hp w/catcher. \$40. 473-2664.

NUDE BEAUTIES - Stamps that is, various other world wide. 473-7042.

STAMP ALBUMS - Scott intl vols I, II, III, used, ex cond. Sacrifice, \$25. 473-7042.

LAWN MOWER - Ride on, 5 hp Sears Craftsman. \$85. 473-2664.

CLOTHES DRYER - RCA whirlpool, gd working cond, \$40; washer, GE basically sound but needs work, \$10; both \$45. Ext. 4723.

BEDRM SET - French prov; Fisher X100B 50 watt stereo amp. Bob, Ext. 4551, 289-2159.

2 GAS STOVES - 20" & 30"; Hotpoint elec dryer. Bob, Ext. 4551, 289-2159.

GOLF CLUBS - Complete Arnold Palmer set w/bag, \$75; Wilson staff 73 irons 2-sand wedge, \$90. B. Vogt, Ext. 4241.

IRON RAILING - Posts & fittings, \$25; Royal standard typewriter; mirror. Ext. 3148, 325-1961.

MOBILE HOME - 1/2 + acre, all util, rte 13, Delaware. Ext. 3148, 325-1961.

SPEAKERS - Interstate audio 4 way, 10" woofer, 5" mid-range, 3/8" tweeter, 2 1/2" wizzer, walnut cabinets, 8 ohms, sculptured grill. Sacrifice, \$70/pr. Paul, Ext. 4309, 475-4394 after 6.

UPRIGHT PIANO - Gd cond, nice tone, suitable for fam rm. \$125. Betty, Ext. 3605.

SURFBOARD - 9'10" Dextra custom, speed skeg, good for beg. \$55. Bolster, 363-7406.

RUG - Austrian loom tufted wool, 8 1/2 x 15 1/2, blue border, ex cond. L. Kopp, 289-0567.

MAJORETTE BOOTS - White, like new, sz 6. \$6. Gordon, Ext. 4613.

SM BIRD CAGE - \$5; lg bird cage \$8; covers also. Irene Merritt, 589-5126.

AIR PURIFIER - Portable, removes pollen & dust. \$25. 286-0497 after 6.

AIR PURIFIER - Port, removes pollen & dust. \$25. 286-0497 after 6.

LADDER - Alum extension, 25', \$40. 286-0497 after 6.

EXERCISE MACH - \$15; tri-cycle, \$10; crazy cars, \$5. Dale Miller, 281-8579.

REFRIGERATOR - 17 cu ft Gibson, \$20. 286-0497 after 6.

TV - Westinghouse b&w, it works. As is, \$10. 286-0497 after 6.

72 CAMPING TRAILER - Cox, sleeps 4 w/extras, excellent cond. \$800. 585-7662 anytime.

DESK - 3 drawer metal, \$75; 3M copier #107, \$125. Cathy, Ext. 2456, 732-6262 after 6.

REFRIG - Hotpoint 15 cu ft, gd cond. \$100. Carol, 744-7144.

HAND DRYER - Remington 600, hand styler, all attachments, ex cond. \$7. Pat, Ext. 3672.

ROLLER SKATES - Rink precision, sz 8 1/2, white, like new, carry case. \$18. Mike, Ext. 4613, 472-0552.

CAMP - Sperti ultra-violet & infra-red, floor mod, 110v, ac/dc, 750 watts. \$7. Mike, Ext. 4613, 472-0552.

LOCK NUT - 2-3" Starrett micrometer ratchet stop, \$24; 2 1/2" std, \$2.50; 3-4" micrometer ratchet stop, \$337. 286-8945.

MIRROR - Lg old oak, has shelf, orig fr old buffet. \$25. Firm. 727-1329.

TAPE RECORDER - Panasonic cassette, 6 months old. \$25. J. Olson, Ext. 3382.

FREEZER - Delmonico 5 1/2 cu ft chest, \$100; handtruck Craftsman 400 lb, \$20; 7 1/2" bladders saw 2 hp, \$20; movie floodlight, \$10; 1/4 hp motor/air comp gaster model 440. \$20. Ron, Ext. 4310.

Real Estate

Real Estate advertised for sale or rent is available without regard for the race, color, creed or national origin of the applicant.

For Sale

CALVERTON/RIVERHEAD - Sale/rent, new townhouse
3 bdr, 1 1/2 ba, air, all appl. Suzanne, Ext. 2441.

SHOREHAM - Beaut ranch, 5 min to Lab, 3 bdr
living rm w/fp, din rm, patio w/awn, full basement
1/2 acre, undergrd util, fence. \$33,000. 744-8356
after 5.

MEDFORD - Levitt, 5 bdr, 2 ba, liv, din, kit, 14x20
den w/fp, all appl, carpet, patio. \$35,900. Jack, Ext
4255, 289-6708.

LEVITT CONDO - 2 bdr duplex, 5 appl, ww carpet
2 ba, cent air, must sell, best offer. 924-8890 eves.

READY TO MOVE IN - 3 bdr ranch, gar, lg kit
wall oven, dishwasher, din rm, w/w carpet, full base-
ment, 100x100 lot, gd location, nr schools & stores
15 min to Lab. 281-8579.

RIVERHEAD - Mobile hm, 12x60 2 bdr, full appl
lg priv yd, shed, 3 car driveway, many extras. 369-
2136 after 5:30.

For Rent

VERMONT VACATION - 3 bedrm mobile hm, 10 ac, close to fishing, golf, tennis, avail weeks or week-ends. Bob, 473-8186.

FURN RM - Kitchen privileges. Ext. 3800, 585-3794.

BELLPORT VILLAGE - 1 fl apt of duplex, golf, tennis, dock, 2 bedrm, kit, gar, basement, lg yard, all util, avail July 1. \$300/mo, lease. 286-8850.

YAPHANK - To share 2 bedrm hse w/another gal, 5 mi from Lab. Franz, Ext. 4337, 924-5294 eves & week-ends.

Wanted

ACCOUNTANT - Part time work for school records consultations. Bill Sanchez, Ext. 3354.

TENOR SAX - Pat, Ext. 4255, 929-4942.

BABYSITTER - Part time, perm basis, 3 da/wk, my home, 8:30-5, 289-1646 after 6 p.m.

CAR RADIO - Am/fm & cb, Lee, Ext. 2939, 727-8052 after 5:30.

BABYSITTER - 4 day/wk, 8-5:30, 1 child, 6 yrs, Brookhaven Hamlet. Jane, Ext. 2441, 286-0065 after 6.

OUTBOARD MOTOR - 15 hp or less, reas. 924-8595 after 5:30.

ENGLISH TUTOR - For 13 & 11 yr Japanese boys. July-Aug. 345-3077.

BOX SPRINGS - Mattresses, twin & full beds, dressers, vg cond. Mirta, Ext. 3102.

ESTIMATES - For cement work. 924-4962, Roy Marlow.

COPY MACHINE - Women's service group, mimeo, duplicating mach, etc, gd cond, inexpen, free would be nice. Pat Towey, Ext. 3727.

FLUTE - Steve, Ext. 4008.

HSE/APT - Visiting prof, wife & 2 yg girls, 4-6 weeks, June-July. T. Ruth, Ext. 4345.

SM APT - Mature woman, walking distance to stores, refs. 981-8582.

N GAUGE TRAINS - Don, Ext. 2026.

CLIMBER - Or jungle jim, in gd cond. Don, Ext. 2026, 286-1396.

DOG HSE - For sm but growing dog. Campbell, 286-3675.

GROUP & BEAN - Labels. Send Bldg. T-89, F. Chandler.

RIDE - Bridgeport, Middletown, nearby Conn, Port Jeff ferry, leave Fri, return Sun, pref round trip, will share expenses. Sheila Feit, Ext. 3592.

BOAT TRAILER - For 14-16' boat. Ext. 3357, 929-4949.

KITCHEN CABINETS - White metal type. 281-8274.

TRAILER - For 12' boat, reas. 475-2946 after 5.

HOME - For 6 wk old female calico kitten. Ext. 3482.

Carpools

E. PATCHOGUE - New research assoc interested in farming or joining carpool, E. Patchogue -Montauk Hwy. Allan, 286-0259.

MILLER PLACE - Driver needed for 3 person carpool, we're friendly. Ext. 3609.

DRIVER - To complete 5-man on-time carpool from LIE exits 43-52 or further west. Pete, Ext. 3297.

BAYPORT/BLUE POINT - Driver wanted for existing carpool. Ext. 2977.

E. PATCHOGUE - Woman desperately needs transportation from E. Patchogue to BNL, pref w/woman. 286-2845.

CORAM - 112 area, join or form carpool. Stew Malloy, Ext. 3044.

Lost & Found

OST - In swimming pool, woman's navy blue jacket.
Kurt, Ext. 4116/4106.

Services

OR HIRE - Vintage cars avail for weddings, etc. 281-460.

ASST TIRES - Asst cond, 15" & 13", 475-0144 after 6.

TENNIS LESSONS - 4-6/group, cert, instruc, reasonable. Tom, Ext. 3525.

VACATION - Cottage avail Fri-Fri, \$120/family/week, a few weeks left. 281-8296 after 6.

NURSING STUDENT - Seeks employ as mother's helper in her htm, exp newborn-13 yrs, hrs open, fee req. Janet, 666-0886/587-6478.

ARD SALE - Sat June 21, 9:30 a.m. huge vol, we'll probably hv what you need. E. Main St. E. Moriches, th house.

CUSTOM CARPENTRY - Specializing in kit, bath, sun-
ecks, ex workmanship, free est. 654-1274 after 5.
WARD SALE - Sat June 21, 5 Pine Court, Riverhead,
ehold goods, 10-4.

AUTOMOTIVE AIR COND - Evacuated, charged, leak
 checked as needed, by appt. 744-3312 after 5:30.
 LOCK WORK - Boat & car keys by code, all lock
 work. Ext. 2957, 744-3312 after 5:30.

ARD SALE - Everything must go, Fri & Sat, June 20-21, 22 Warner Lane, Lake Ronkonkoma. St. Mary's church on corner.

ENGLISH IVY - Free, you all come dig. Phil Davis,
ext. 4311, 473-0495.

AVE TRUCK - Yards, cellars, garages cleaned, light
hauling, odd jobs done. 727-1329.

FREE SERVICE - Removal, topping, cabling, pruning,
seasoned oak cord wood, chain saw work. 727-1329.

UTO BODY - Repairs & repainting, call for free est.
 ob, 698-7647, 727-9669.

CONCRETE SPECIALISTS - Patios, walks, etc. Pat, 744-425.

ENCES - Chain link & wood, direct & save. Russ, 744-787.

W MECH - Dealer trained, lowest prices, guar work.
red, 924-3556, Pete, 281-0268.

DRUM LESSONS - From exp drummer w/cred & refs,
as. Bill Trigg, 286-1262 after 4.

PAINTING - Ext/int, 2 college seniors, 5 yrs exp, qual
work, many refs. 751-6431, 751-0907.

SUMMER PROGRAM - At Williams College, fine arts, tennis, Aug 3-10, instruc, priv rm, meals. For complete info call 883-5629.

SHERMAN - Do you want your catch deliciously smoked? 744-9411.

PLANTING A LAWN - Let me do the hard work, rotating, reasonable. 588-5833.

Classified Ad Policy

Deadline is 12 noon Monday for publication Friday of the same week.

1. The Brookhaven Bulletin's classified section may be used only by active and retired Laboratory employees.
2. All items for sale or rent must be the advertiser's property.
3. Ads for material acquired for resale in association with a full or part-time business cannot be accepted.
4. Firearms offered for sale or trade may not be brought on site.
5. Ads not carried because of space restrictions will be held for publication in the next issue.
6. Ads are run only once and must be resubmitted if they are to be repeated.
7. Ads should be restricted to 20 words or less and typed or printed on the form provided, and must bear the employees signature.

<input type="checkbox"/>	For Sale: Auto & Auto Supplies	<input type="checkbox"/>	Wanted	Check <input checked="" type="checkbox"/> the heading applying to your ad. Print or type your ad in 20 words or less.
<input type="checkbox"/>	For Sale: Boats & Marine Supplies	<input type="checkbox"/>	Carpools	
<input type="checkbox"/>	For Sale: Miscellaneous	<input type="checkbox"/>	Lost & Found	
		<input type="checkbox"/>	Services	

Ads concerning property for sale or rent cannot be accepted on this form. Special Real Estate Ad forms are available at the Office of the Brookhaven Bulletin, Room 111, 40 Brookhaven Avenue.

(Name & Phone No. To Call)

Employee's Signature..... Life No. Ext.
Send to: Brookhaven Bulletin, Building 460, 40 Brookhaven Avenue (Ext. 2345).