



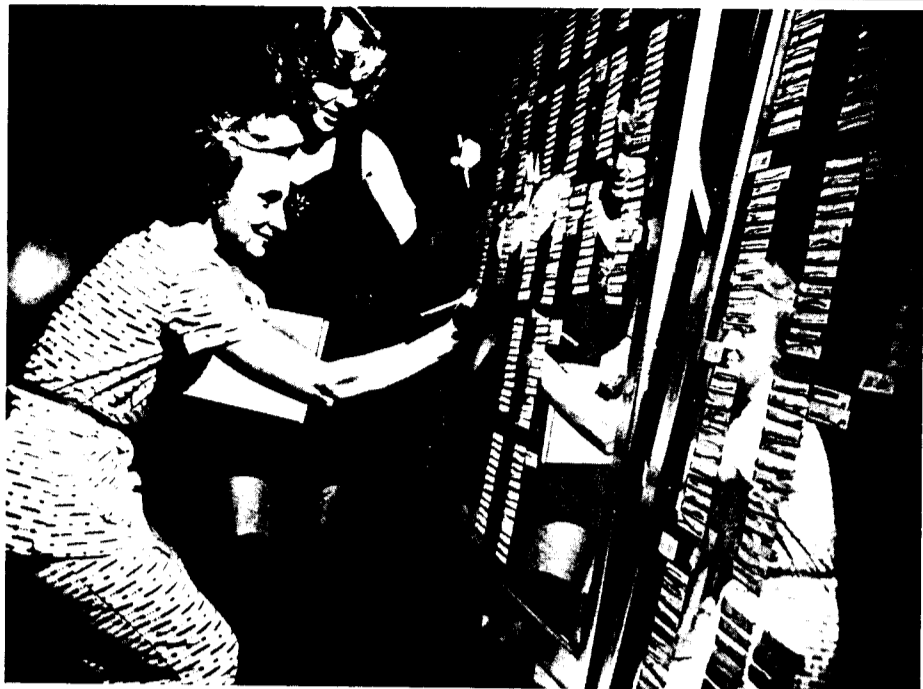
# BROOKHAVEN BULLETIN

Published by the Brookhaven National Laboratory Public Relations Office



Volume 29 - Number 27

July 11, 1975



Lucy Kinne (left), a member of the Hospitality Committee, gives Sharon Rosenhagen, assistant chairman of the BNL Blood Drive, a hand registering donors.

## Blood Drive - A Success

More blood was drawn during this year's visit by the Bloodmobile since the first blood drive in 1971.

On June 26 and 27, 742 persons gave a total of 93 gallons of life-giving blood. This compares to 724 donation last year and 810 in 1971, the first year of the BNL Blood Program.

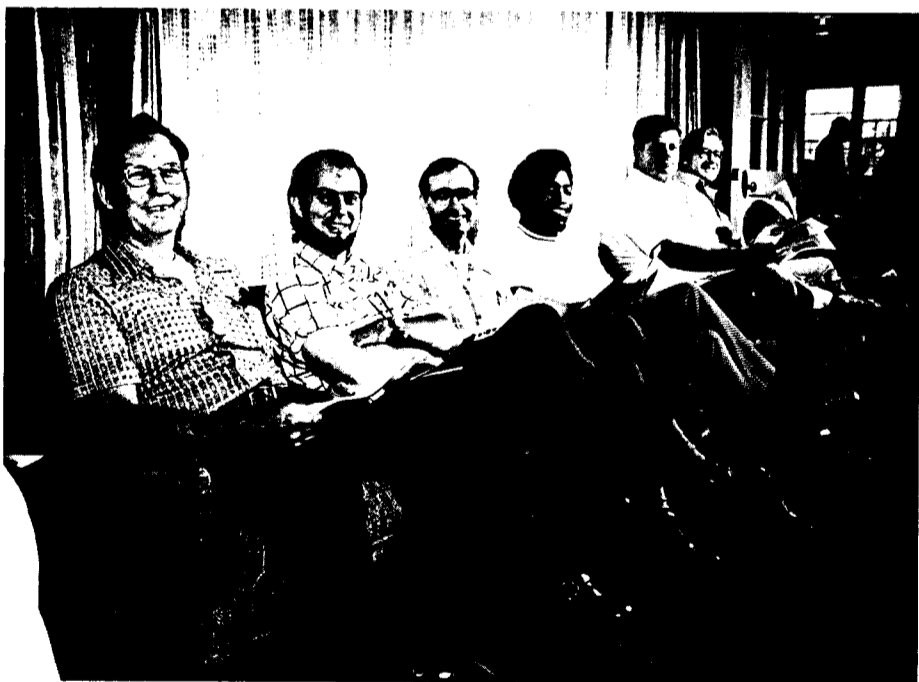
Once again, the Lab has met the quota required by the Greater New York Blood Program, assuring all BNL employees and their immediate families of an unlimited supply of blood when needed for one year. This also applies to employees who did not donate.

When requiring blood, employees should inform the hospital of the Lab's membership in the Greater New York Blood Program and then call the Personnel Office at the Lab for the necessary paperwork.

The success of this year's blood drive was due to its coordination by Gerry Kinne and Sharon Rosenhagen, the voluntary aid of the members of the Hospitality Committee and the efficient conversion of the Brookhaven Center into a donation center by Plant Engineering and Staff Services.



Al Prodehl, Accelerator, rests a little after donating a pint of blood.



Relaxed donors wait their turn to give blood.

## Velardi Paintings To Hang In Hecksher Exhibition

Two paintings by Esterina Velardi will be shown at the Hecksher Museum, Huntington, July 20 - August 31, in an exhibition entitled "Twenty Women Artists." Other recent Velardi showings on Long Island have been at Gallery North, the State University at Stony Brook and the Parrish Art Museum in Southampton. Ms. Velardi holds a degree from the Yale University of Art and Architecture and is married to William S. Hillman, Biology.

## Official & Special Events

- Monday, July 14  
ISABELLE Summer Study (July 14-25)
- Wednesday, July 16  
Navy Meeting
- Sunday, July 20  
Pulmonary Project Site Review (July 20-22)
- Tuesday, July 22  
Seaton Hall Tour
- Thursday, July 24  
ERDA Construction Team

## Winsche Becomes Energy Head Hendrie New DAS Chairman

On July 1, Warren Winsche left his position as Chairman of the Department of Applied Science to become BNL's first Associate Director for Energy. Succeeding him as DAS head, for a five-year term, is Joseph Hendrie, former head of the Engineering Division of DAS.

In his new role, Winsche will have overall responsibility for the Laboratory's research and development programs on energy systems and energy technologies, including reactor safety support programs for the Nuclear Regulatory Commission (NRC). Environmental and health-related aspects will remain the realm of Associate Director Victor Bond.

Winsche foresees his new office serving as an information-coordination center for energy research. He believes that there are many basic research efforts at the Lab that are indirectly related to energy, and the difficulty lies in learning about them and relating them to the applied research going on outside Brookhaven.

He wants to encourage individuals working in different areas on related research to work together. There is a lack of communication between researchers, he says, so people might be working on related research and not know about it. He hopes to bridge the gap in communication by keeping abreast of all energy related research at the Lab and other institutions.

Besides serving as a source of energy information within the Laboratory, Winsche would like to be a source that local outside interests could rely on. If state or local government officials or members of industry had questions regarding energy, he hopes that they would feel free to come to him. "Things are so complicated that sometimes it is difficult for people to know where to go for information or how to go about finding out," said Winsche.

Winsche's knowledge of the energy field is well grounded. While Chairman of DAS, a position he held for 13 years, he pursued active research interests in the order bed breeder reactor, the role of hydrogen in the future energy industry and the use of high rate chemical reactors in energy production systems. During his tenure as chairman a broad base of energy related programs were developed including energy systems analysis, energy storage development and fusion reactor technology, nuclear material safeguards, concrete polymer development, atmospheric sciences and coastal oceanography.

During this same period, there was a wide gradual evolution of many of the basic programs such as material development in superconductivity, various research areas in molecular sciences, such as porphyrin research, metal hydride systems and nucleation phenomena.

Winsche came to Brookhaven in 1946 when he headed the Pile Engineering Division and participated in the design of the Brookhaven Graphite Research Reactor and the Hot Laboratory. He left the Lab for ten years, starting in 1952, to become a Senior Research Supervisor and later a Research Manager at E.I. duPont de Nemours. During this period he was also involved in the design and operation of the chemical processes at the Savannah River Plant. Later, he was responsible for modification of these plants for new needs, including the large scale production of plutonium-238.

Joseph Hendrie, a Senior Physicist, is a likely successor as DAS Chairman. He has a strong and noted background in reactor technology, particularly the safety aspects.

Hendrie has made significant contributions in reactor engineering, in the development of research reactors, and in advancing the safety of large power reactors. His many contributions to reactor safety, particularly to the safety of large commercial power reactors, have been made principally through his membership on the Advisory Committee on Reactor Safeguards. He was on the Committee from 1966 through 1972, and served as its chairman in 1970.

Hendrie directed the design, construction and operation of BNL's High Flux Beam



Warren E. Winsche

Reactor (HFBR). His other accomplishments include investigations on the diffusion properties of thermal reactors and of the deleterious effects of plutonium buildup on the temperature coefficient of the graphite-uranium reactor.

In 1970, Hendrie was one of five recipients of the E.O. Lawrence Memorial Award. The five scientists were honored for meritorious contributions in the field of atomic energy. Hendrie received the award for his outstanding contributions to the physics and engineering of versatile research reactors and for his leadership in promoting the safety of large power reactors.

Hendrie began his professional career at the Radiation Laboratory at Columbia University in 1950. In 1955 he accepted a position at BNL as an Assistant Physicist.

In 1972 Hendrie was appointed Deputy Director for Technical Review in the then AEC's Directorate of Licensing. The licensing directorate performed all activities related to staff review and processing of applications for nuclear power plants and



Joseph M. Hendrie

other facilities' licenses, radioactive material licenses and the licensing of reactor operations.

Upon returning to BNL in 1974, Hendrie was cited by AEC Director of Regulation, L. Manning Muntzing, for his technical competency and sound judgement during a critical period of reorganizing within the AEC. In a letter addressed to Laboratory Director George Vineyard, Director Muntzing said of Hendrie, "Through his leadership as Deputy Director of Licensing for Technical Review, we have developed consistency and efficiencies in the most difficult area of regulation."

Prior to leaving BNL for his two-year appointment with Directorate of Licensing, Hendrie was the head of the Engineering Division of DAS.

# Monday Set For Isabelle Study

Over the weekend, physicists from all over the world will begin arriving at BNL for the start of the ISABELLE Summer Study on Monday. To date, 108 persons have registered to attend.

The last summer study was held in 1972, during which preliminary ideas for the design and physics of the machine were discussed and modified. This year's ISABELLE study will delve into more specific questions concerning the construction and use of the intersecting storage accelerator.

Since the 1972 conference several things have happened to shed a more optimistic light on the machine. In 1974 a subpanel of the High Energy Physics Advisory Committee, headed by Professor Victor Weisskopf, of MIT, recommended to the AEC that ISABELLE be built at Brookhaven. They also encouraged BNL to continue research and development work on ISABELLE with the hope that the machine would be funded for construction in the near future.

The subpanel, this time chaired by Professor Francis Low of MIT, met again last month. Although their report is not available yet, Professor Low notified Laboratory Director George Vineyard informally that they are recommending funding for ISABELLE in fiscal year 1977.

These two developments have created a surge of optimism in the high energy physics community. Representatives from nearly every high energy physics facility in the world will be joining together at the summer study to make certain that the design of ISABELLE and associated experimental facilities are as well thought out as possible.

The primary aim of the summer study is to give scientists who would propose experiments at ISABELLE the opportunity to influence its design. In this way the widest range of ideas will be available for consideration.

During this year's summer study the participants will also be addressing specific physics questions to determine how ISABELLE might help answer them.

The first two days of the two-week summer study will be spent reviewing the status of the machine design and the physics program associated with it. This part of the summer study will be open to the entire high energy physics community. The remaining time will be devoted to parallel working sessions of the participants, covering specific topics.

A banquet will be held on July 23, featuring Dr. Steven Weinberg, Professor of Physics at Harvard University, as the guest speaker.

Preparations for the ISABELLE Summer Study, underway for nearly a year, were the result of hard work by the Summer Study Organizing Committee. Members of the committee, headed by Aihud Pevsner of Johns Hopkins, are Larry Sulak, Harvard, and Harold Hahn and George Kalbfleisch of BNL.

## July Service Awards

### Twenty-Five Years

Herbert Susskind ..... Applied Science  
George W. Woodson ..... Applied Science

### Twenty Years

Albert Geiger ..... Central Shops  
Joseph H. Jones ..... Photo. & Graphic Arts

### Ten Years

Patrick J. Asendorf, Jr. .... Biology  
Henry Bednarz ..... Mech. Engineering  
Frank Chorzempa ..... Central Shops  
Robin R. Gianopoulos ..... Medical  
Arthur D. Harris ..... Accelerator  
Benedicto J. Scala ..... Fiscal  
Harold W. Siegelman ..... Biology  
A. Ric Villacara ..... Personnel

## BROOKHAVEN BULLETIN

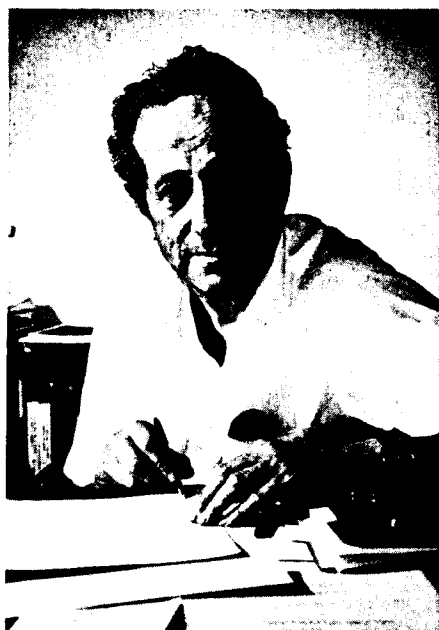
Published Weekly for the Employees of Brookhaven National Laboratory

CARL R. THIEN, Editor  
JEAN BURKE, Assistant Editor  
CAROL GOLDSTEIN, Copy Preparation

40 Brookhaven Ave. Upton, N.Y. 11973  
Telephone 516 345-2345



Ken Hoffman



Leonard Hamilton



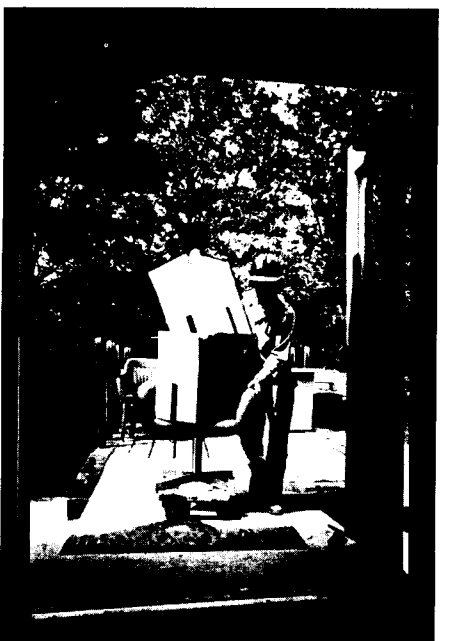
Philip Palmedo



Murrey Goldberg



Bill Marcuse



Charles Elbert, P.E., brings boxes into the newly renovated H-building.



Potted plants liven up a freshly painted window sill.



The long halls of the H-building are occupied once again.

## Hollow Halls Are Now Full

The halls of the H-building, vacant since 1969, are now bustling with activity again. The sounds in the halls are not those of noisy dormers, but the rat-tat-tat of busy typewriters, the whirr of electronic calculators and the muffled voices of conferences behind doors.

The H-building, located on Upton Road across from the women's residence, has been undergoing renovation since April. Working under an extremely tight schedule to have the building ready for occupancy by July 1, they were able to beat their deadline. By late June, the renovation of the building was sufficiently complete for habitation by members of the Engineering and Systems Division of DAS, headed by Ken Hoffman, and the Bio-Medical Assessment Group, a joint DAS-Medical Department enterprise headed by Dr. Leonard Hamilton.

The design and architectural work of the renovation project was done by Pete Mercier, and the construction was supervised by Arnold Benson, also of Plant Engineering.

The H-building was built in the 1940's when Camp Upton was a rehabilitation center. One half of the building was a women's dormitory and the other half was a men's. The two were divided from one another by a boiler room, making the center of the "H." When the Laboratory was formed on the Camp Upton site in 1947, the building continued to serve as a dormitory.

Today, the boiler room has been supplanted by a large conference and lecture area. The rest of the building has been divided into four wings, each occupied by a different group.

Four groups within the Energy and Systems Division of DAS, previously housed in the Cosmotron building, are now in the renovated H-building, formally known as Building 475. These are the Economic Analysis Group, headed by Bill Marcuse; the Energy Policy Analysis Group, headed by Phil Palmedo; the Energy Environmental Data Group, headed by Murrey Goldberg; and the Energy Technology Assessment Group, of which Ken Hoffman is the acting head. The Regional Studies Group, headed by Phil Palmedo, is also in the building.

## Upton Nursery School

Upton Nursery School is a cooperative learning center for three and four year olds, two or three days a week.

Applications are currently being taken for the 75-76 school year beginning in September. Class sizes are kept small and applications are accepted on a first come first serve basis.

For further information please call Linda Lynn 924-8329.

The second in a series of Off-Site articles will appear next week. It will explore Suffolk County's 1000 miles of shoreline.

## Cafeteria Menu

### Week Ending July 18, 1975

<b>Monday, July 14</b>	
Cream of Mushroom Soup	
Chicken a la King on Rice	1.10
Cheese Omelet & 1 Veg.	1.00
<b>Tuesday, July 15</b>	
French Onion Soup	
Chinese Pepper Steak on Rice	1.20
Stuffed Cabbage	1.20
<b>Wednesday, July 16</b>	
Split Pea Soup	
Breaded Flounder Filet & fr. fr.	1.10
<b>Special</b>	
Spaghetti w/Meat Sauce & Garlic Bread	
All you can eat	\$1.00 plus tax
<b>Thursday, July 17</b>	
Cream of Chicken Soup	
Macaroni & Chopped Beef	1.05
Veal Pattie Parmigiana & 1 Veg.	1.20
<b>Friday, July 18</b>	
Fish Chowder	
Broiled Filet & 1 Veg.	1.10
Beef Hash & 1 Veg.	1.10

## Selected Reading

- Nature, 225, June 19, 1975
- 300 years of Greenwich:
- The next 300 years. F.G. Smith. 581-3
- English astronomy before 1675. J.L. Russell. 583-7
- The Greenwich Observatory: origins and early development, 1675-1835. E.G. Forbes. 587-92
- Airy and after. A. J. Meadows. 592-6
- Greenwich Observatory in the twentieth century. A. Hunter. 596-9
- Sidelights on the Royal Observatory. P.S. Laurie. 599-602
- Astronomy three hundred years ago. O. Gingerich. 602-6
- Science 189, July 4, 1975
- Absence of U.S. energy leadership. P.H. Abelson. 11
- White House science advisor: House Committee mulls Ford bill. R. Gillette. 28-9
- Freedom of Information Act: Problems at the FDA. G. Bari Kolata. 32-3
- Ray fed up, quits State. 33

## PE Staff Changes

Named to replace Ed Hunter, who retired as Site Superintendent on June 30, is Herman Haller Jr., former General Supervisor, Roads and Grounds.

Haller, 35, was born in Queens and raised in New Jersey. When he was 12, his family moved to Bellport where Herm attended Bellport High. After graduation he joined the Navy and at the end of a 3½ year tour started work at Brookhaven. As he rose through the ranks to his present position, Herm attended classes at Suffolk Community College and State Agricultural College at Farmingdale. He has always had an interest in BERA activities, as well as an active interest in boating and fishing.

Roy Barone, 38, named to replace Haller as General Supervisor, Roads and Grounds, started work at BNL in 1967 as Masonry Foreman. He was born in Manhattan and raised in Queens, where he graduated from Newtown High School. After his family moved to Patchogue, he worked in the construction field until joining the Brookhaven staff in 1956. Since then he has been in various positions with Plant Engineering until he became Masonry Supervisor last year. Roy and his family live in East Patchogue.

Warren (Bud) Hulse, named to be Supervisor, Roads and Masonry, started work at Brookhaven in 1962, after a 12-year stint as a mason contractor. Bud was born and raised in Center Moriches where he attended grammar and high school. His main recreational interests lie in the outdoors, as an avid deer hunter and shark fisherman. He is a member of the Moriches Anglers and Vice Commodore of the Forge River Boat Club.

## Tennis Tournament News

The annual BNL Tennis Championships start tomorrow morning, weather permitting, at the Lab courts. All entrants should consult the draw sheets for their match schedules. The draw is posted at the court bulletin board, the gym (NE entrance), and the BERA sales office in Berkner Hall.

Tournament play is scheduled for Saturday and Sunday, morning and afternoon, and throughout the week immediately after. The finals are scheduled the week of July 21. All matches will be scheduled by the Tournament Committee, and the courts will be reserved for these matches.

Good luck to all, and pray for nice weather.

## Golf League

Twenty-seven golfers turned out on Tuesday evening, July 1, for a nine-hole tournament at the Spruce Course of Middle Island Country Club.

George Korhut had the low gross score of 40. Korhut tied for low net with George Kuzmack and Tony Baltz at 36. Ed O'Connell had the longest drive on the sixth hole, and Jesse Becker was closest to the pin on the par 3 number eight.

## Archers Triumph

BNL archers distinguished themselves the past few weeks. First we participated in a match with an accomplished shooter (45 bore from 500 yards) where three of us suffered defeat. However, the emphasis was on first place and that honor went to Joe Bauernfeind using an olympus compound bow. Joe achieved a score of 275 out of a possible 300, eleven points higher than Jim Gregory with the pistol. The scores of the "also rans" need not be mentioned.

The BNL contingent journeyed to Watkins Glen to engage archers from six mid-Atlantic states and the medal harvest was gratifying. Joe Bauernfeind corralled a gold for the "AA" Class. Bob Lundgren captured a bronze for a high flight in Class "A" and Lou Nicholosi received a bronze for another flight in Class "A."

The frosting was provided by David Schweizer who managed a gold in the youth division. If interested in Dave's exploit you may be able to pry details from his father "Don."

If a lack of success on the part of the writer is evident don't fret - I am saving it for the National in Vermont in two weeks. See you then!

—Carl Cantera



In the Exhibit Hall, after seeing "Brookhaven's Quest," are: (left to right) Calvin Lee, George Hardy, Sharon Gresham, Russell Scott, Brady Burton, Deborah Williams, Craig Scott and Henry Hooks.

## Preface Program Enters 2nd Year

Summer at Brookhaven has not only brought with it sunny skies and balmy weather, but a large and varied group of students, pursuing a wide range of scientific studies and research. Students come from universities all over the United States, from East Coast to West Coast. One group of students is participating in the Preface Program.

The Preface Program is made up of incoming freshman at Howard University in Washington, D.C. The program was designed to give college bound students the unique opportunity of getting a first-hand look and feel for where their years of study can lead them. The eight students, two women and six men, will all be majoring in a branch of engineering, either electrical, civil, chemical or mechanical. They have been assigned to AGS, Plant Engineering, Applied Math, DAS and Instrumentation.

These departments and many more were visited by the students during a three-day Lab tour. There was surprise and enthusiastic interest voiced by the students at the

breadth of the research being carried on here at the Lab, especially in the areas of ecology and medicine. The overwhelming response on their part was, "There is so much one could learn here. This should really be an interesting experience."

These guest research assistants arrived in the evening on Saturday, June 28, and were officially welcomed to BNL during a Monday morning "Meet the Students" coffee, by Renee Flack, Equal Opportunity Assistant, and their department supervisors. The students were given an overview of the Lab by "Brookhaven's Quest," a three-screen slide presentation. They were then given an extensive tour, followed by orientations by their advisors.

The Preface Program is jointly sponsored by ERDA and Howard University. This is its second year in operation at BNL, where it is coordinated by the Affirmative Action Office. The program will end August 8, allowing time for the students to return to Washington and prepare for their studies.

—G.G. Greenhouse

## Arrivals & Departures

### Arrivals

Mohammad S. Akhtar	Medical
Michael A. Bender	Medical
Louis W. Ducote	Chemistry
Frank M. Endres	Plant Engrg.
Asher Etkin	Accelerator
Otto H. Jacobi, III	Accelerator
Richard L. Klobuchar	Chemistry
Leo B. Levitt	App. Science
Henry Makowitz	App. Science
David C. Rorer	Reactor
Carl E. Schwarz	App. Science
Jon T. Scott	App. Science
Efrain Segarra	Medical
Deepinder P. Sidhu	Physics
Prantika Som	Medical
Richard T. Spragg	App. Math.
Margaret A. Thomas	App. Science

### Departures

Christine B. Lazarus	Medical
----------------------	---------

## Swimming Pool Schedule Effective Through August 31

<b>Monday - Friday</b>	
11:30 a.m. - 1:00 p.m.	Employees Only
1:00 p.m. - 2:30 p.m.	Children's Lessons
3:00 p.m. - 9:30 p.m.	Employees/Families/Guests*
<b>Saturday &amp; Sunday</b>	
1:00 p.m. - 6:00 p.m.	Employees/Families/Guests*
<b>Season Passes</b>	
\$10	Employee or Family Member
\$20	Family
<b>Daily Rates</b>	
50¢	Employee/Family Member
75¢	Guest
*Summer season will extend through September 30, 1975.	

\*Only one guest per adult member may be admitted to the swimming pool at any one time without prior arrangements. Adult BERA member may arrange to have more than one but not more than five guests at any one time by making arrangements with the Recreation Representative in the Personnel Office in advance.

## Indian Troupe Performs Tonight



This troupe of dancers and musicians from Calcutta, India, will be performing a satirical drama tonight at 8 p.m. in Berkner Hall. Tasher Desh (Land of Cards) takes place on an island where all actions are controlled by a fixed code of conduct. The characters are dressed as playing cards which symbolize the rigid society. Two shipwrecked youths bring knowledge of liberty which eventually destroys the old restrictive order and in the end all join in a song of emancipation. Tickets are \$3 for general admission and \$2 for students. They are available from the following people: Helen Keeley (AGS), Pat Towey (Physics), Gwen Bergin (DAS), Lynn Kalback (Biology), Jo Gazzola (Fiscal), Audrey Blake (Library), Jean Burke (Director's Office), Fran Caruso (Applied Math), Kathy Tuohy (Medical) and Ralph Weston (Chemistry).

## It's Here To Use

Brookhaven National Laboratory as we all know is not merely a place where you come to work eight hours a day, but a community offering a wide variety of services, facilities and recreational activities to its employees.

The Brookhaven Employees Recreation Park, located at Brookhaven and Fifth Avenues, features a field area for softball, football and soccer, an archery range, a camping area, picnic tables, grills and horseshoe and volleyball courts. Reservations for parties may be made at the Recreation Office, located in the Personnel Building.

During lunch or after work employees can use the gymnasium which offers exercise programs, basketball, volleyball, ping-pong, badminton, indoor tennis and soccer.

Six outdoor tennis courts are available for non-scheduled use except when tournaments are being held during the summer months.

One guest is permitted per adult BERA member for use of the recreation facilities. Special arrangements for up to five guests can be made at the Recreation Office.

There are many clubs and leagues on site. Among these are archery, camping, camera, radio (ham), french, judo, outing, chess, bowling, golf, and runners/cyclists. There are also art exhibits, concerts, a cooking exchange group and movies. For further information on these and other activities contact the Recreation Office, Ext. 2873.

There is a Research Library on Brookhaven Ave. which is open from 8:30 a.m. to 11 p.m., and for those who wish to stay longer, they may do so until 2 a.m. A Bookmobile, containing a collection of 2000 books, stops on the corner of Technology and Brookhaven in the Applied Math parking lot on alternate Fridays from 1:15-2:15 p.m. Books are loaned on a no-charge basis with a membership card obtained from the Suffolk County Cooperative Library at the Bookmobile. To find out the Bookmobile's next visit call the Recreation Office.

There is a bank at 2 S. Technology St. which is open from 10 a.m.-3 p.m. on Monday through Thursday, and 10 a.m. to 4 p.m. on Friday. The Cashier's Office, which is in the Fiscal Building at 37 Brookhaven Ave., will cash personal checks up to \$100 with proper identification. There is also a U.S. Post Office on Center St.

The cafeteria in Berkner Hall opens at 7:30 for breakfast and closes at 6:30 p.m. Hot lunch is served from 11:15-1:30 and hot dinner from 5-6:30 p.m. Beer is available after 5 p.m. On weekends and holidays hours are 9 a.m. to 2 p.m. There is also a Vended Food Service, which is open 24 hours a day, in the AGS building.

The Brookhaven Center is open to all for fun and relaxation, television and refreshments. Center Club summer hours are 5 p.m.-11:30 p.m. every evening. In the winter (October-May) the hours are 5 p.m.-11:30 p.m., Sunday to Friday.

Monday through Friday a Laboratory vehicle meets the 10:06 train at Patchogue. This train leaves Penn Station in NYC at 8:37 a.m. and Jamaica Station at 8:56 a.m. At 3:45 p.m. the bus leaves the Administration Building for the Yaphank Station to meet the 3:59 train. Prompt departure is necessary to meet the train, and riders should arrive at the Administration Building no later than 3:40 p.m. This train arrives at Jamaica at 5:47 p.m. and at Penn Station at 6:11 p.m. Please make reservations for the p.m. bus by calling Ext. 2345.

The Long Island Airport Limousine Service is available by calling 433-2277 Ext. 9. There are regular hourly and door-to-door service to Kennedy and LaGuardia.

The Citgo service station located on Rochester St. provides a car rental service. Their rental rates are: \$9 daily, 10¢ per mile, gas paid; \$55 weekly, 10¢ per mile, gas paid; \$220 monthly, 3¢ per mile, gas not paid. Six cars are available, and they must be picked up and returned to the station. Station hours are 8 a.m. to 5:45 p.m. on weekdays, 8 a.m. to 1 p.m. on Saturday. There is no service on Sunday.

The Brookhaven Bulletin provides a no-charge classified ad service to the BNL community. Ad forms are printed in each issue of the Bulletin or may be picked up in the Public Relations Office. The deadline for ads is Monday at noon.

The Public Relations Office located at 40 Brookhaven Ave. (Ext. 2345), provides information about the Lab for visitors and employees.

—Catherine Argyros

