



Henry Steele Commager

## Another Look At Higher Education

Henry Steele Commager, one of America's most eminent historians, will present the 17th AUI Distinguished Lecture entitled "The Idea of the University - Revisited" on Monday, November 3, at 8 p.m. in Berkner Hall.

Professor Commager will speak on the system of higher education in America which, he believes, has become less and less responsive to the needs of society. Historically, the American university emerged from special circumstances to meet the needs of a new and heterogeneous people and differed radically from its counterpart abroad. Neither the circumstances nor the needs are now the same, but the educational practices and malpractices persist. Is it not time, Dr. Commager asks, for a drastic reconsideration of higher education to enable it to serve the society of the present and the future as it served that of the 18th and 19th centuries?

Professor Commager is presently the John Woodruff Simpson Lecturer at Amherst College where he has taught for nearly 20 years. He also taught at New York University, Columbia, Cambridge, Oxford, Uppsala, London University and the University of Copenhagen.

A member of Phi Beta Kappa, he graduated from the University of Chicago in

1923, and received his master's and Ph.D. degrees there in 1924 and 1928. He holds honorary degrees from 34 colleges and universities worldwide.

A prolific writer, Dr. Commager has written or edited over 60 books. Concerned not only with documentary history from the age of discovery to the present, his writings and frequent public appearances have addressed questions of constitutional and intellectual history as well. In his concern for our freedoms, he has been likened to a 20th century Tom Paine.

Since 1966 he has been a member of the National Academy of Arts and Letters which awarded him its Gold Medal for History in 1972. During World War II and after he served on the War Department's Committee on the History of the War.

Since the first AUI Distinguished Lecture in 1966, the series has presented lecturers prominent in many fields. They have included such notables as Sir Isaiah Berlin, philosopher; Stewart Udall, Secretary of the Interior during the Kennedy and Johnson administrations; Adam Yarmolinsky, internationally known lawyer and government advisor; and Edwin Canham, Editor-in-Chief of the Christian Science Monitor.

The lectures are free and no tickets are necessary.

## Yugoslav Diplomat Visits Lab



Dr. Milan Bulajic, Yugoslav Consul-General in New York (center) is accompanied by Veljko Radeka, Head of the Instrumentation Division (left) and John Blewett, Special Assistant to the Director (right) on a visit to the Mark II magnet on October 20. Bulajic visited the Laboratory in connection with researches on his countryman, Nikola Tesla, the noted electrical inventor, for whom the new unit of magnetic force is named.

## Concert Series Premiere

The celebrated Austrian-born pianist Walter Klien will open the 1975-76 BERA concert season with a recital which will feature works by Mozart, Brahms and Beethoven.

The concert will be held in Berkner Hall at 8:30 p.m. on Thursday, October 30. Admission for adults is \$3.50; for students with identification, and persons over 65, \$1.75; and \$1.00 for persons under 18.

Adults may purchase tickets at or before the first concert in blocks of five or more at \$2.50 each, and the BERA Concert Committee urges eligible persons to take advantage of this substantial savings.

## Cronkite Honored At Hungarian University

Dr. Eugene Cronkite, Chairman of the Medical Department, was awarded the Semmelweis Medal in Budapest, Hungary, on September 29. The handsome bronze medal was presented to Dr. Cronkite in an unexpected ceremony, after he delivered a lecture at Semmelweis University during the course of a trip to Hungary.

Named after Dr. Ignaz P. Semmelweis, a 19th century Hungarian physician, the award was given to Dr. Cronkite for career accomplishments and in recognition of the training opportunities in medical research given to Europeans at the Laboratory.

## One Man's Reply To Nuclear Critic

As a private citizen and as a scientist working on energy systems and nuclear safety, Vance Sailor, a senior physicist in DAS, wrote to *Newsday* in response to an attack on nuclear power plants which appeared in that paper October 7.

Sailor's reply "Why Delay Nuclear Power?" was published in *Newsday* October 17, in response to an article "Should Long Island 'Go Nuclear'?" written by Ann Carl, research director of the Lloyd Harbor Study Group, Inc., which opposes the construction of nuclear reactors on Long Island.

Several years ago at the AEC Shoreham licensing hearings, Suffolk Scientists, a citizens group of scientists, engineers, doctors and other professionals, headed by Sailor, intervened in support of LILCO's application to build a nuclear power plant at Shoreham. The Lloyd Harbor group was in opposition. The go-ahead was eventually given for the Shoreham plant and the facility is expected to be in operation by late 1978.

Hearings on proposed additional plants at Jamesport are reconvening next week in Riverhead and are again being opposed by several citizen organizations which are being assisted by the Lloyd Harbor group. In an interview here, Sailor said the Suffolk Scientists cannot intervene now as petitions to do so had to be filed a year ago. At that time, "we didn't foresee that the Jamesport hearings would be a rerun of the Shoreham hearings," he said. "We thought the Shoreham case had settled the nuclear issue on Long Island."

Sailor's article was not a point by point rebuttal of the Carl article, but centered on the total energy situation, the choices for Long Island and the advantages and disadvantages of nuclear power.

"Carl's article gives the impression," said Sailor, "that the technical demonstration of nuclear power plants hasn't been carried out, that the problems haven't been worked on scientifically. This is just not correct. It's the demonstration of commercial viability that hasn't been achieved, in some areas."

"The man in the street will be acutely conscious of energy matters in the days ahead," said Sailor, "because of the extra money he's going to have to pay to heat his house, run his car, pay his electrical bill."

In his published article, he noted that Long Island is totally dependent on two fuels - domestic natural gas and imported petroleum products. Both face serious long term supply problems. On the Island, the largest source of energy is petroleum based-gasoline, diesel, No. 2 and residual fuel oils. Our electricity is entirely from oil, and almost all gasoline and fuel oil used here is foreign. Prices have been rising since 1973. With each price increase the competitive position of Long Island business and commerce declines and the cost of living for the Long Island resident moves up a notch.

At the same time that fuel is becoming scarce and expensive the population of east-

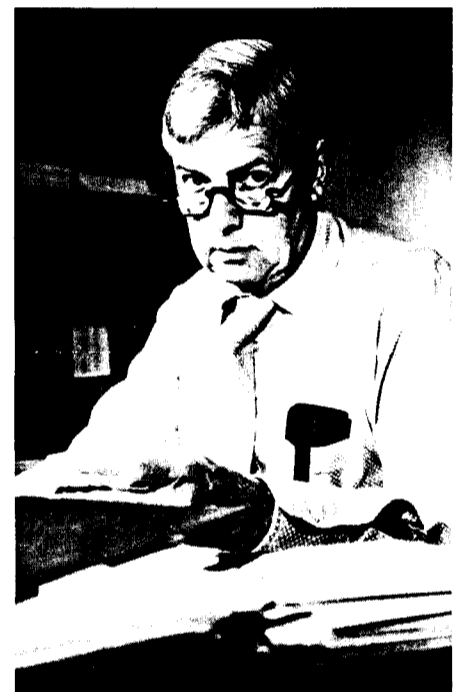
ern Long Island has been increasing rapidly.

Sailor sees only two technically and economically viable systems of energy available which have the potential for providing significant amounts of energy during the next two or three decades. These two systems are coal and nuclear.

Of the two, nuclear systems are in the best state of development and availability for near term use. Although coal was used on Long Island in large amounts, the supply and distribution system has completely disappeared and must be totally recreated. Because of increases in population densities, new methods of using coal must be found, otherwise air pollution would become intolerable.

The Carl article referred to an ERDA report No. 33. In an interview, Sailor said that "the article misinterpreted that report. It indicated, for instance, that ERDA 33 concluded that it would be better to turn to a coal cycle. This statement is just not made anywhere in the report."

Sailor likened the energy supply situation on Long Island to that in New England. New England began a transition to nuclear energy in the early 1960's and now about one-third of the electricity generated is from nuclear plants. Essentially no coal is used, and, except for the nuclear component, practically all energy comes from do-



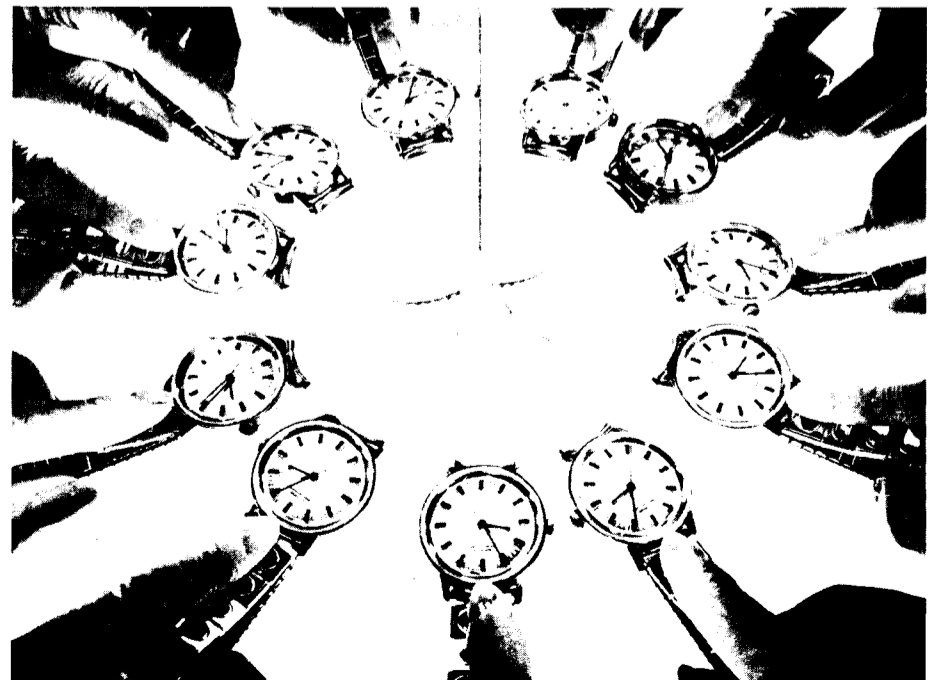
Vance L. Sailor

mestic gas and imported oil. During the first half of 1975, the average total cost of producing electricity in New England has been 12.7 mills/kwh for nuclear, compared with 34.2 for oil.

It is true, he said, that the cost of nuclear energy has been rising very rapidly in recent years, but the costs of other types of

(Continued on page 2)

## Gain An Hour On October 26



You'll have time on your hands, one hour more anyway, on Sunday, October 26, when we revert to Eastern Standard Time. Set your clocks back one hour before you go to bed Saturday night and snooze on. Photographer Mort Rosen has once again created a timely reminder.

## Solar Energy For Home

The Environmental Technology Seminar, Inc., a non-profit educational and professional society, will hold a Solar Energy Conference and Exhibit at Berkner Hall, November 1 and 2. Laboratory employees are invited to preview the exhibit on Friday, October 31.

The exhibits, free to the public, will be on display on Saturday, November 1, from 9:15 a.m. to 12 noon, and from 1:45 p.m. to 4 p.m. On Sunday, November 2, the exhibits may be viewed from 9 a.m. to 4 p.m.

The theme of the exhibit will be the range of solar energy possibilities from direct conversion to do-it-yourself systems. Of particular interest to the homeowner will be a display of a variety of residential hot water and heating and cooling systems, as well as information about a windmill manufactured on Long Island.

The conference will be held on Saturday, November 1, only and is open to all for a fee of \$10. The conference will be concerned with the possibilities and practicalities of solar energy and how it relates to the individual. Local, state and federal government officials, as well as a spokesman from Grumman Aerospace Corp., will address the conference and will later entertain questions from the audience.

Among the speakers planned are Congressmen Jerome A. Ambro and John W. Wydler, Jay Holmes, Project Manager of ERDA's Division of Solar Energy and David C. Moore, Program Manager of the Solar Heating and Cooling Demonstration program for HUD, the U.S. Housing and Urban Development Administration.

## One Man's Response (Cont'd)

power plants have also risen by corresponding amounts. Most of the cost of producing nuclear electricity lies in the amortization of the capital investment, whereas in the case of coal and oil systems, the fuel is a major cost factor. Latest projections indicate that two nuclear units rather than coal-fired units at Jamesport will save the people of Long Island more than \$5 billion between 1982 and 2000.

Although there is a surplus of uranium, Sailor pointed out that there is a problem in the adequacy of uranium production capacity. "Both uranium miners and utilities are reluctant to commit themselves economically for a long period to a fixed price when nobody knows what inflation is going to do," he said. ERDA is giving serious attention to methods of preventing these shortages of supply.

As to the risks involved, Sailor's article indicated that thus far the regulatory system, the responsibility of the U.S. Nuclear Regulatory Commission, has yielded an extraordinary record of safety - there have been no accidents that have affected the public. As an indication of confidence in the safety record, he pointed out that insurance companies have repeatedly increased their liability coverage of nuclear plants, while reducing premiums.

Asked what he thought about solar energy, Sailor felt that within the next ten years we would probably have a large number of homes and buildings that make partial use of solar energy. However, he thinks "the payoff for generating electricity by solar energy is a long way off because of the tremendous economic problems that large plants face."

Vance Sailor believes that scientists should participate as much as possible in public discussion of these issues. "After a scientific education," he said, "there are so many things in your background that you take for granted, for example, how to understand a graph, doing order of magnitude kind of calculations, that it's difficult when talking to the public to avoid snowing them under with the jargon." However, "the credibility of science with the public is at a low ebb," and he hopes that more and more scientists will make the effort to bridge the credibility gap.

## Stay Home!

This is not a subversive message, just a reminder that October 27, is a **HOLIDAY** - Veteran's Day. You may legally sleep until noon, rake leaves, or take off for a long weekend.

## Painting Exchange

The annual exchange of paintings in the Hospital of Brookhaven's Medical Department will take place on November 5, in the Occupational Therapy Room.

Due to a temporary cutback in the loan program, some changes are required for the 1975-76 season. Some paintings will be continued on loan, subject to approval by their owners and others will be returned as usual. Owners will be contacted by telephone in the near future. For further information, call Eleanor Dahl, 286-1592, Emily Czaja, 286-8448, or Veronica Brooks, 345-3684.

The Committee wishes to thank all who participated in this exchange and hopes to reestablish a full program next year. So please keep painting!

### Wanted!

Painters, sculptors, potters, jewelers, et al. Don't forget to register the articles you wish to include in the BERA Art Exhibit, opening November 11. Forms are available in the BERA Sales & Services Office in Berkner Hall and should be forwarded to the Chairman of the Art Committee, Ginnie Sayre, Bldg. 460, by October 31.

## New Dean At Stony Brook

Robert Nathans, formerly a senior physicist on the Brookhaven staff, has been appointed Dean of the new W. Averell Harriman College for Urban and Policy Sciences at SUNY, Stony Brook.

Nathans left Brookhaven in 1969 to assume a professorship at Stony Brook. Currently he is Director of the University's Urban and Policy Sciences Program. Since his departure from Brookhaven he has maintained ties with the Laboratory in his collaboration on various research projects in the Physics and Applied Science Departments.

Nathans said that "the kind of preparation the Harriman College will be offering is



Dean Robert Nathans

essential for dealing with the technically complex problems that face governments in the areas of energy, environment, transportation, criminal justice, health education and in the management of government itself. With this training, our graduates will be highly qualified for a wide range of policy-level jobs in government and industry."

The announcement of the new college was made at the Stony Brook Awards Dinner honoring Laboratory Director George Vineyard and former Governor Harriman on September 26.

## Cooking Exchange

Fish-y, fish-y in the sea  
What am I to do with thee?  
Come to the next meeting of the Cooking Exchange and find out. Whole, filleted, canned, fresh-water, salt-water - we'll prepare and taste them all.

Everyone is welcome to join us at the Recreation Building at 12:30 p.m. on Wednesday, October 29. As usual, we will charge 75¢ for demonstration materials and 25¢ per child for babysitting. — Judy Mills



Dorothy Theinert stands by one of her primary responsibilities in the Cashier's office - the safe.

## The Lady With The Money

A no-nonsense, fair-haired gal, named Dorothy Theinert, is currently enlivening the Cashier's "cage" in the Fiscal Division. She loves her job for the work itself and because "she gets to meet a lot of people." The Laboratory's first woman cashier, she is alert and has a strong sense of responsibility for the Laboratory's money.

Although this is her first full-time job, she is used to being flexible and meeting people. Most of her youth was spent in various areas of the United States and Europe. Her father's work required the family to be on the go a great deal of the time. She spent three years in Texas, three-and-a-half in North Carolina and six-month stints in other states of the U.S. In Europe Dorothy lived for three years in Turkey (she still remembers some Turkish), and shorter periods in Germany and Greece.

Her parents later established a small bookkeeping systems company and she helped to keep the books. Dorothy has two children and before coming to Brookhaven in 1974, spent her time at home.

The cashier is only allowed to cash shift worker checks and personal checks up to \$100. Anyone who presents another type of BNL check to Dorothy will be agreeably but firmly directed to the bank.

## Trip To New York City

Arrangements have been made for a LIRR trip to the city on Wednesday, December 10, for the special round-trip fare of \$2.45 per adult. A limited number of reserved first-mezzanine seats are available for the Radio City Music Hall's traditional Christmas Show and feature film, "The Sunshine Boys." Tickets, at a cost of \$4.50 each, are available on a first come, first-served basis. *Deadline for reserving a seat is Tuesday, October 28.* Show time is 6:30 p.m. Please note that children under age three will not be admitted. Call Ruth Dimmler, 751-6342, as soon as possible to reserve tickets.

Reservations may still be made for the November 5 railroad trip and optional tour of Lincoln Center. Call Ruth Dimmler, or Rosemary Jewett, 345-3089.

## Hospitality News

The next morning coffee will be held on Tuesday, November 4, from 9:30 to 11:30 a.m., at the Brookhaven Center. Free babysitting will be provided.

Ms. Ursula Rauth will show us how to make a bicentennial costume in the Dolly Madison fashion out of two single bedsheets!

## Cafeteria Menu

### Week Ending October 31, 1975

<b>Monday, October 27</b>	
Snack Bar Open 9 a.m. - 2 p.m.	
<b>Tuesday, October 28</b>	
Cream of Potato Soup	
Southern Fried Chicken & 1 veg.	1.10
Macaroni & Cheese & 1 veg.	1.00
<b>Wednesday, October 29</b>	
Onion Soup	
Tuna Noodle Casserole	1.10
<b>Standing Steam Ship Round</b>	
Baked Potato w/sour treat or Buttered Noodles	
String Beans Almondine or Glazed Carrots	
Slices of Hindquarter of Beef	
Small Juice or Soup	
Plain Jello or Ice Cream	
Small Beverage	\$2.00 plus tax
<b>Thursday, October 30</b>	
Chicken Noodle Soup	
Chili Dogs on Rice	1.00
Chop Steak & 1 veg.	1.05
<b>Friday, October 31</b>	
New England Clam Chowder	
Broiled Fillet & 1 veg.	1.10
Sirloin of Beef & 1 veg.	1.25

## Holiday Closes Center

The Tap Room in the Brookhaven Center will be closed on Sunday, October 26, because of the Veteran's Day holiday on October 27. Normal business will resume at 5 p.m. on October 27.

## Diners Note

The Cafeteria will be closed on Saturday and Sunday, November 8 and 9.

The Center Club will have a snack bar open from 9 a.m. to 2 p.m. on these days.

The Vending Food Service in Building 912 will be in operation continuously.

Normal business will resume at the Cafeteria on Monday, November 10.

## Arrivals & Departures

### Arrivals

Alan M. Bieber, Jr.	Applied Science
Alexander G. Draffan, Jr.	Biology
Walter Y. Kato	Applied Science
Marian E. LeFevre	Medical
William M. Massinger	Central Shops
George W. Radlhammer	Accelerator
William H. Sachs	Applied Science
Beth A. Schecher	Applied Science

### Departures

None

## Official & Special Events

### Wednesday, October 29

Neutrino Workshop - Physics (October 29-30)

### Thursday, October 30

Concert - Berkner Hall  
St. John's University Tour  
Long Island Bone & Metabolism Meeting - Berkner Hall

### Friday, October 31

U.S. Military Academy Officers Tour  
Solar Energy Exhibit - Berkner Hall

### Saturday, November 1

Solar Energy Conference & Exhibits  
Sunday, November 2  
Solar Energy Exhibits

### Monday, November 3

Navy Meeting  
AUI Distinguished Lecture - H.S. Com-mager - Berkner Hall  
ERDA Molecular Sciences Review (November 3-5)

### Tuesday, November 4

Election Day

### Thursday, November 6

Chemical & Physical Processes in Combustion Meeting - Berkner Hall (November 6-7)

## Postal Bulletin

Although it seems early to be thinking about Christmas mail, it is not too early to send surface mail to the Far East. Parcels should be sent immediately and greeting cards by October 25. Deadlines for both domestic and international mail are listed below.

### Domestic Mail

	Air	Surface
	Letters	Parcels
48 U.S. states	Dec. 15	Dec. 21
Alaska and Hawaii	Dec. 15	Dec. 20
	Nov. 30	

### International Mail

	Air	Surface
	Greeting	Parcels
	Cards	Parcels
Canada and Mexico	Dec. 19	Dec. 15
South & Central Amer.	Dec. 16	Dec. 11
Europe	Dec. 16	Dec. 11
Africa	Dec. 14	Dec. 9
Near East	Dec. 14	Dec. 9
Far East	Dec. 14	Dec. 9
	Greeting	Surface
	Cards	Parcels
Canada and Mexico	Dec. 8	Dec. 2
South & Central Amer.	Nov. 18	Nov. 11
Europe	Nov. 18	Nov. 11
Africa	Nov. 4	Nov. 1
Near East	Nov. 4	Nov. 1
Far East	Oct. 25	Oct. 15

**BROOKHAVEN BULLETIN**

Published Weekly for the Employees of Brookhaven National Laboratory

BERNICE PETERSEN, Editor

CAROL GOLDSTEIN, Copy Preparation

40 Brookhaven Ave. Upton, N.Y. 11973  
Telephone 516 345-2345

CARL R. THIEN, Public Relations Officer

**Letters To The Editor**

To the Editor:  
Perhaps you sang a lovely song,  
Or sat quietly in a chair;  
Perhaps you sent a funeral spray,  
If so, we saw it there.  
Perhaps you spoke the kindest words,  
That any friend could say;  
Perhaps you were not there at all,  
Just thought of us that day.  
Whatever you did to console our hearts,  
We thank you so much whatever the part.  
—The family of the late Philip Christian

**In Memoriam**

On Thursday, October 16, 1975, Roslyn Shapanka, a research associate in the Biology Department, died suddenly. Not only did Brookhaven Lab lose a dedicated researcher who loved her work, but more importantly, the community lost a champion of the disadvantaged and the oppressed.



Roslyn Shapanka

Despite the setbacks and the tragedies in her personal life, Roz remained a "dyed in the wool" optimist. Her interest in people and zest for life brightened the halls of the Biology Department for the past years and she will be sorely missed by all of us. The world has too few people like Roz Shapanka, and now tragically it has one less.

—Diana C. Bartelt  
Biology Dept.

**September CREF Values**

1974			
January	\$40.75	February	\$40.83
March	39.32	April	37.58
May	35.11	June	34.29
July	31.71	August	29.09
September	25.39	October	30.27
November	29.23	December	28.35
1975			
January	\$30.67	February	\$32.80
March	33.77	April	36.12
May	38.07	June	39.88
July	36.81	August	35.86
September		\$34.31	

**Ghostly Humor**

One of the most sophisticated ghost stories of them all, *Blithe Spirit* by that suave hobgoblin, Noel Coward, will be read by an especially selected cast at the Theater Group's next meeting, November 10, 1975, at the Exhibit Hall (Stage II). Please note the change of date. Under the direction of Denise and David Dew-Hughes, this reading will provide a Halloween treat that will be enjoyed by all. Curtain time at 8 p.m.

**Bowling News**

Cathy Van Noy

**Pink League**

The Swingers are leading the rest of the league with a seven point advantage. High games were bowled by Dot Morelli 175, B. Jellett 175, P. Oster 170 and N. Netusil 160.

**Red League**

Congratulation to J. Scesny for the first 600 scratch of the year to win his club award. C. Buzzeo also bowled well to win his 678 award. 200 games for the night were J. Scesny 216 and 213 (615 scratch), C. Buzzeo 216 (680 gross), F. Pachinger 209, K. Asselta 209, T. Prach 205, E. Meier 201, J. Petro 200 and J. Ferrero 200.

**Green League**

The Got-A-Hit-Ums just seem to be rolling along as they have extended the lead to twenty points over the Blue Jays who moved into second place. 200 games for the night were T. Iarocci 202, 202 and E. Malcolm 211.

**Black N Blue League**

After six weeks the Upton Downers are in first place with the Maybe's and the Odd Balls a scant three points in second. High games for the night were N. Carter 210, F. Bugala 208, J. Erickson 201, P. Lebitski 175, I. Ferrero 166, A. Bangel 160. High gross pots were won by Frank Bugala 244 and Pat Lebitski 227.

**Football Notes**

by Jack Brennan

The Slow Pokes put it all together and won the football playoffs by beating the League champs, Old Timers, 24-6. Tom Prach threw four T.D. passes to Flet Johnson (2), George Oldham and Ron Picinich. Ray Atkins had two interceptions and dropped a third. The Old Timers' touchdown was a Skelly Frei to Bob Garron pass play.

The semi-finals saw the Slow Pokes holding off Roga 25-18 after a 25-0 lead, and the Old Timers beating the Chickens 31-6.

**Nets Discount Tickets**

There are still some tickets left for the Nets-St. Louis basketball game scheduled for Friday night, October 31. Deadline date to pick yours up will be Tuesday, October 28, at 2:30 p.m.

Tickets are being sold at the BERA Sales & Services Office in the Cafeteria at a special discount price of \$3 for \$7 tickets.

The BERA Sales & Services Office is open between the hours of 7:30 a.m. to 2:30 p.m. each work day. The telephone extension is 3347.

**Preparing For Winter**

While you may be thinking of getting your warm clothes out of mothballs, it's also time to be getting your car in shape for the cold days ahead.

Laboratory vehicles are being prepared for the season snow tires, heaters, and antifreeze included.

The automotive maintenance shop requests that no water be added to cooling systems except in emergencies, and if such an emergency occurs, that they be notified so that antifreeze protection can be assured.

This is good advice for all car owners.

A recent newspaper report indicated that no shortage of antifreeze is expected this winter and that the price may be dropping, so there is no excuse not to take care of this promptly.

**Bicentennial Moves Closer**

The Brigade of the American Revolution will make a weekend appearance at Brookhaven Township's newly acquired Longwood Manor, just west of the Lab's Main Gate, on Smith Street in Ridge.

Members of the nationally famous Brigade, dressed in authentic uniforms and armed with weapons and equipment identical to that used 200 years ago, will come from many parts of the country to present drills, tactical battlefield demonstrations, musical reviews and exhibitions of the crafts and skills of the 18th century.

The Brigade will appear on Saturday, October 25, at 11 a.m., 1:30 p.m., and 3:30 p.m.; on Sunday at 11 a.m., 1:00 p.m. and 3:00 p.m.

**Gymnasium Schedule**

Effective Monday, November 3, the following gymnasium schedule will be in effect.

Monday through Friday	
Monday through Friday	11:00 a.m. - 1:30 p.m. General activities
Monday	5:00 p.m. - 9:30 p.m. Volleyball (mixed league)
Tuesday	5:00 p.m. - 9:30 p.m. Tennis (by reservation)
Wednesday	5:00 p.m. - 9:30 p.m. Volleyball (men's league)
Thursday	5:00 p.m. - 9:30 p.m. Basketball league
Friday	5:00 p.m. - 7:30 p.m. Soccer league
	7:30 p.m. - 9:30 p.m. Karate
Saturday	12:00 a.m. - 5:00 p.m. Tennis (by reservation)
Sunday	12:00 a.m. - 2:00 p.m. Tennis (by reservation)
	2:00 p.m. - 5:00 p.m. General activities

Persons wishing to make reservations to play tennis in the gym must sign up on the board provided for this purpose in the gym and must comply with the regulations of the Tennis Committee.

**Pool Opens November 1**

The Laboratory swimming pool will reopen Saturday, November 1, at 1 p.m. The following schedule will be in effect until further notice.

Monday through Friday	
11:30 a.m. - 1:30 p.m.	Employees Only
5:00 p.m. - 9:30 p.m.	Employees/Families Guests*
Saturday and Sunday	
1:00 p.m. - 6:00 p.m.	Employees/Families Guests*

**Entrance Fees:**

Daily	
Employee/Family Member	50¢
Guest*	75¢
Season Passes (11/1/75 - 1/31/76)	
Employee	\$ 5
Family	\$10

The pool is closed on BNL holidays.  
\*Only one guest per adult BERA member may be admitted to the swimming pool at any one time without prior arrangements. Adult BERA members may arrange to have more than one but not more than five guests at any one time by making advance arrangements with the Recreation Representative in the Personnel Office.

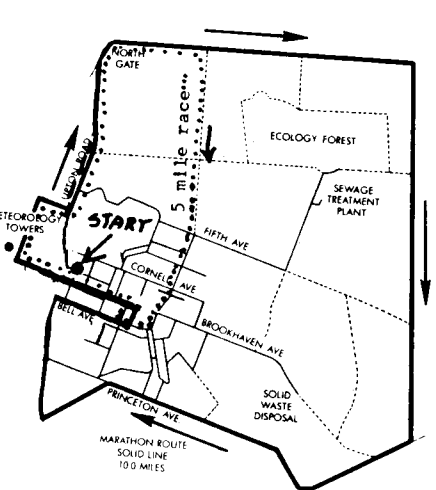
**Volleyball**

Volleyball will be starting soon. Rosters are due this Friday, October 24. Anyone interested in playing who is not already signed up on a team should call Pat Oster, Ext. 4763, and have their name put in the players' pool.

All employees are eligible to play, and spouses of players are eligible in the mixed league. Women are needed for the mixed league this year to fill out team rosters.

—Pat Oster

**Race Routes**



**The Run Around**

The 5 and 10-mile foot races will be held rain or shine on Sunday, October 26, at 10 a.m. (E.S.T. - Don't forget to change your clocks or you will be early.) Registration will begin at 8:45 a.m. in Berkner Hall, and an entrance fee of \$1.00 will be collected.

Certificates will be awarded to all who finish the race. The event is open to all BERA members, their families and friends.

**EMERGENCY PHONE NUMBERS**

Medical	2222
Fire	3333
Police	4444

**Classified Advertisements**

**Placement Notices**

Each week the Personnel Office lists personnel placement requisitions, currently being processed. The purpose of these listings is, first, to give notice of all non-scientific staff positions being filled and, second, to give employees an opportunity to request consideration for themselves through the Personnel Office. In filling vacancies, the Laboratory's objective is to give first consideration to present employees, as follows: employees within the immediate group having the vacancy, employees within the department or division, employees within the Laboratory as a whole.

For further information regarding a placement notice, or to request consideration for an available position, contact Supervisor, Personnel Placement & Development, extension 2874 or 2882.

232. FACILITIES ENGINEER - BSEE or equivalent with 2-5 years experience in electrical layout, wiring and one-line diagrams, lighting and distribution systems. Includes electrical spec. writing and preparation of electrical drawings for laboratory, office and other buildings. Plant Engineering Division.

233. FACILITIES ENGINEER - BSME or equivalent and 3-8 years progressively responsible experience in design of HVAC, steam, plumbing, controls and process and mechanical systems. Includes field investigation, construction spec. writing, drafting, equipment selection, procurement and system testing. Plant Engineering Division.

234. TECHNICAL SPECIALIST - Seeking 2-4 years field surveying experience with full knowledge of surveying tools and instruments. Assignment involves assisting in the production of topographic charts, maps, and similar field engineering work. Plant Engineering Division.

235. METAL WORKER MAINTENANCE A - Application deadline: November 3, 1975. Plant Engineering Division.

236. REFRIGERATION & AIR-CONDITIONING ENGINEERING - Application deadline: November 4, 1975. Plant Engineering Division.

237. BUILDING & GROUNDS UTILITY WORKER - Application deadline: October 30, 1975. Plant Engineering Division.

238. LABORATORY CUSTODIAN - Application deadline: November 3, 1975. Plant Engineering Division.

239. CUSTODIANS - Plant Engineering Division.

240. PAINTER A - Application deadline: November 3, 1975. Plant Engineering Division.

241. HELPER A (Electrical) - Application deadline: November 3, 1975. Plant Engineering Division.

242. MATERIAL HANDLERS - Application deadline: November 3, 1975. Supply & Materiel Division.

243. STORESKEEPERS - Application deadline: November 3, 1975. Supply & Materiel Division.

244. BUYER - Seeking experience in general procurement of a wide assortment of raw materials, supplies and equipment. Experience should include coordination of complete procurement process from requisition stage through delivery as well as customer and vendor relationships. Purchasing Division.

245. SECRETARY - Purchasing Division.

246. EXPERIMENTAL MACHINIST - Application deadline: November 3, 1975. Central Shops Division.

247. OFFICE SERVICES ASSISTANT - Technical Information Division.

**Autos & Auto Supplies**

71 GREMLIN - Good cond, ps/pb/ac. \$1500. 744-2069 after 5:30.

74 CAMARO - Z-28, gold 350, hi performance, 5000 mi, immaculate cond. Matt. 273-4738.

2 RIMS - For G78-14 tires, from 70 Cutlass, \$15. Jim, Ext. 3302.

NEW TIRE - Sears, brand new, half price, guardsman 78, F78-14, mounted on Olds wheel. Ext. 2902.

4 TIRES - Dunlop, B78-14, w/w, 4 ply rating, 6 mos old, 4000 mi. \$17.50 ea. 878-0123 after 5.

RIMS - 2 chrome reverse, \$6 ea; 2 chrome Keystone, \$6 ea; all 14" Ford. M. Tesla, Ext. 3284.

67 T-BIRD - Tudor, vinyl top, radio, clean car, ps/pb, tilt steering wheel. \$600. 475-3553.

2 TIRES - G60-14 w/mags, 6 mos old. Sell \$125, new \$175. George, Ext. 2410.

2 SNOW TIRES - W/w, D78-14 Goodyear, suburbanite, studded, mounted on Ford rims. Geo, Ext. 2043.

TIRES - (3) 685-15"; (3) 645-13"; reasonable prices. 475-0144 after 6.

67 CAMARO - 327 V8, 4 barrel, ps/pb, power soft top, 20 mpg hwy, good cond. Asking \$850. 924-5622 eves.

64 CHEVROLET - Impala, 4 dr, 6 cyl, ps. \$350. George, Ext. 4460.

74 VEGA GT - Hatchback, am radio, 4 spd, camaro int, ac, radials, low mi, A-1. Asking \$2500. 588-4703 after 5.

TRUCK TIRE - New heavy duty, never used, mounted on new Dodge rim, 9.50x16.5 Uniroyal Fleetmaster, 8 ply rating. Dot, 286-8909.

69 FORD RANCH WAGON - 302 cu in V8, ps/ac, good cond, 70,000 mi. Asking \$1000. Steve, Ext. 4308.

70 SCOUT - 4 wheel drive, chrome wheels, 6 cyl, 3 spd trans, excel shape. \$2700. 727-6190, 727-4154.

65 CHEVROLET - 2 dr hdtp, excel running cond, auto, ps, radio. Asking \$495. 588-4733 after 8.

## Classified Advertisements

### Autos & Auto Supplies

68 CHEVY STATION WAGON - 8 cyl, \$150. Jan, Ext. 3420.  
 70 CORVETTE - 80,000 mi, 454 cu in, 390 hp, coupe, grey, 4 spd. \$3700. Robert Gwathney, Ext. 2238.  
 TIRES - New used & recaps, extra rims. Ken, 289-8212 eves, no lab calls!  
 67 PONTIAC LEMANS - In good running order, needs nothing, all black inside & out, 3 spd, hurst stick, mags on back. Must sell now! \$400. Ext. 3639.  
 72 CHEVY IMPALA - 2 dr, ps/pb/ac, auto trans, asking \$1800. 698-6031.  
 VW TIRE - 735-15 replaced 650-15 w/rims. \$25 ea. Fred, 798-8589.  
 69 FORD FALCON WAGON - Standard trans, asking \$675. Ext. 4122, 286-8512.  
 73 FORD PICKUP - F100, west coast mirrors, front tire rack, runs excel, clean, must sell. \$2250. 589-3269.  
 69 OLDS - 98 luxury sedan, all power, many extras, excel cond, ac/am/fm, price negotiable. 289-6469 after 5:30.  
 TIRE - 6.45x14 polyester cord, used. \$8. Bill DeCaro, Ext. 3354.  
 73 CHEVY VAN - 350 V8, 1/2 ton, good cond. \$2000. George, 281-7763 eves.  
 72 PONTIAC - Luxury Lemans, 2 dr htdp, light blue, white vinyl roof, ac, bucket seats, console, rally wheels, full equipped, excel cond, must sell. Kathy, Ext. 2496, 331-9139.  
 69 FORD TORINO - 2 dr, 8 cyl, auto, ps, vinyl top. \$750. Ext. 4494, 751-0812 after 6.  
 74 HORNET - 2 dr sedan, 25,000 mi, r&h, excel cond. \$2200, owner leaving country. Branko, 246-6169, 5-9.  
 65 MERCEDES BENZ - 220 SEB, new tires, valve job, very good running cond, body has rust. \$400. Tom Perkidyoylis, 929-6646.  
 74 CHEVY MONTE CARLO - Low mi, mint, steel radials, extras, ac/ps/pb, tilt steering wheel. 354-8244 eves.  
 70 BUICK ELECTRA - Convertible, full power, new shocks, brakes & tuneup, ac, excel cond. \$1695. Ext. 3593.  
 70 CHEVY - 4 dr biscayne, pb/ps, really A-1 cond. \$1050. Ext. 3593.  
 71 YAMAHA 250CC - DT1, road & dirt, good cond. \$375. P. Hichborn, 929-4133.  
 74 KAWASAKI - 125cc Enduro, road & dirt, 900 mi, excel cond. \$600. P. Hichborn, 929-4133.

### Boats & Marine Supplies

24' ZOBEL - Hdtp, sea skiff, 125 hp Chrysler crown. \$500. 363-6037.  
 19' DORY - Oak, cedar, copper outboard well, retractable rudder, could be converted to sail. In water, needs paint. \$125. Paul, Ext. 3277.  
 16-17' CENTURY - All mahog, 25 hp, all elec, controls & gauges, trailer up to 19' w/new tires, rims & bearings, excel cond. \$395. Phil, Ext. 4173 after midnight.

### Miscellaneous

DINING RM SET - Mahogany, 4 strait chairs, 2 arm chairs, table w/pods, china closet, sideboard. \$300 or best offer. 744-2069.  
 STEREO AMP - Paco, precision apparatus, 40 watt, tube type, extra tubes. \$35. Ext. 3593.  
 BEDRM SET - Complete, full size bed, dresser, desk, 2 night tables. 298-4089.  
 LIVING RM SET - Mediterranean, crushed velvet sofa & love seat, 3 tables, console, 2 lamps, drapes, like new. 722-3938.

SKIS - 185 cm Fischer coverglas w/americana bindings, \$30; Hart-knight w/americana bindings, \$45; used once. Walt, Ext. 3256.  
 PLUSH CARPET - 1 1/4", antique gold, 9x11, excel for area or w/w, foam padding included. \$70. Dick, Ext. 3860.  
 FURNITURE - Hanging lamps, glass tables, bedrm sets, TV, stereo, washing machine, everything must go now, husband has let me redecorate! Ext. 3639.  
 BICYCLE - Men's 26" Schwinn. \$25. 744-0979.  
 ELEC GUITAR & AMP - Kay, remote controls, 3 inputs, tremolo, good cond. \$45. Dick, Ext. 3860.  
 SOFA - Early American, high back, 3 cushions, dark green, dark pine trim, pleated skirt. \$85. Dick, Ext. 3860.  
 MOBIL HOME - 12x60, colonial, 2 bedrms, full bath, appliances, oil hot water & heat, landscaped in park. 929-6909, 727-8582 after 5.  
 ORGAN - Hammond E111 series, dual manual keyboard, full foot pedals. \$1700. Ext. 2456.  
 BICYCLE - Women's Hercules, British made, 26", 3 spd, good cond. \$30. Ron, Ext. 4310.  
 DIP METER - Eico grid, like new. \$18. Tom Perdikoylis, 929-6646.  
 CONSOLE TABLE - Antique white, opens to seat 6 & 4, cane back chairs w/red seats. Best offer. 928-1740.  
 ALBERTA SPRUCES - 1 1/2", \$4 ea; blue spruces to 5', \$5 ea, you dig; hydrangeas, potted, \$2 ea. John, 744-5867.  
 BEDSPREAD - Twin size w/quilted top, orange, yellow, white floral design, excel cond. \$8. 732-5829.  
 SKI EXERCISER - Stein Eriksen "Ski Way", \$10. Ext. 2885.  
 SKI RACK - Dovre car roof top, lockable rack. \$10. Ext. 2885.  
 SKIS - 185 cm Ostryker metal skis, no bindings. \$20. Ext. 2885.  
 TURNTABLE - Garrard AT6 w/2 cartridges, Shure & Empire, excel cond. \$15. Richie, Ext. 4254, 734-7342.  
 BEDRM SET - Blonde solid wood, very good cond, 2 dressers, 1 w/mirror; headboard & bookcase. \$175. Richie, Ext. 4254, 734-7342.  
 LOCK NUT - 2-3" Starett mike ratchet stop, 2 1/2 standard, \$30; 3-4" mike ratchet stop, \$30. 286-8945.  
 GE RANGE - 40", very good cond. \$50. Mrs. Simone, 281-7230.  
 COCKER-POO - Female, black, 4 mos, has all shots, already wormed, watchdog. Asking \$40. Marc, 281-5296.  
 GAS RANGE - 30", bottle, Caloric, almost new, gold color. Asking \$250, cost \$325. 585-7094 after 5.  
 QUEEN SIZE - Mattress & box spring, 1 month old, Macy's, \$150; gold area rug 10x15, \$20. 798-8589.  
 FRESH LAMB - 80¢/lb dressed weight. (607) 326-2033.  
 FRENCH TRUMPET - Besson, Meha model, 3rd finger trigger, double case, excel cond. Ext. 3054.  
 WASHING MACHINE - Hotpoint, working, \$25; dryer, free, needs parts. Ext. 2910, 286-0866.  
 COAT - Red knit, dbl breasted, jr 12, like new, spring/fall, \$8; mirror, door, gold-like, med frame, \$3; ring, 4 pt diamond in 14k gold white setting, approx size 7, \$50. 727-7796.  
 GAS HEATER - Outside vented space heater, extremely efficient, perfect for garage or barn. \$75. Jean, Ext. 3298.  
 DRUM SET - 3 piece, 2 Ludwig snares, excel cond. Asking \$300. 363-7032. Ext. 3688.  
 PLAY/GYM SET - Elaborate, 2 single swings, double slide, pumper, ladder & pole, 7 legs, all steel, only requires paint. \$15. 286-8805 eves.  
 HUMIDIFIER - Sears, auto, aquastat, 30 gal capacity, steel construction, brown wood-grain finish, on wheels, works like a charm! \$25. 286-8805 eves.  
 LENS - 58mm F 1.4 MC Rokkor automatic diaphragm for Minolta, brand new, make offer. Ext. 2052, 744-9436.  
 GIRL'S BIKE - Schwinn 20" repainted, good cond. \$16. 286-3509.

HEATING FURNACE - Lennox elec central, 220 V, forced hot air. \$75 or offer. Ext. 2885.  
 WATER HEATER - Rheem glass-lined 82 gallon, 220V. \$75 or best offer. Ext. 2885.  
 SOFA SET - 3 piece sectional & matching chair, contemporary, turquoise scotch guard upholstery, \$125; 3 walnut tables, \$25. 588-7989.  
 TRAVEL TRAILER - Coachman Middy, self-contained, sleeps 6, refrig, stove, head, furnace, can be used w/compact car, ready to go. Ext. 4317, 286-0128.  
 CRIB - Full size, walnut, w/mattress, excel cond, other baby items. Ext. 3044.  
 SPREADER - Penncrest brand, good cond. \$7. Ext. 3044.  
 INFANT CAR SEAT - Orig cost \$24, asking \$9. Les, Ext. 4074.  
 PORTABLE ORGAN - 5 octave Panter w/20 stops. \$250. Anne, Ext. 3336, 475-8456.  
 DOOR - 36" wide x 80" high, used w/hardware, jams & trim. Charlie, Ext. 3950.  
 GE ELEC RANGE - 4 burner, \$45; gas range, 4 burner, \$35; black Angus broiler, \$5. George, Ext. 2434, 567-4403.  
 74 HONDA 550 - 4 custom seat headers, 6000 mi. \$1500. Matt, 273-4738.  
 IMPORTED COFFEE TABLE - From India w/attractive inlaid ivory design. \$100. 751-0812 after 6.  
 HOLLYWOOD BED - Walnut frame eclipse mattress, wedges & covers included, excel cond. Linda, Ext. 3381.  
 TELEVISIONS - 19" Motorola B&W table model, working, \$40; headboard, king size, black & gold, \$30; satin drapes, \$35; sofa bed, danish modern, \$100; chandelier, black wrought iron, 10-arm, \$50. 581-9199.  
 AMER INDIAN JEWELRY - Sterling silver, turquoise, coral, earrings, necklaces, pendants, bracelets, rings, Zuni, Navajo, very reasonable. Marie, 588-5586.  
 PUPPIES - German shepherd, 6 weeks old, AKC registered, shots, wormed, champion lines, excel temperament, 1 male, 3 females. Barbara, 281-7815.  
 RIDING OUTFIT - Pants, jacket, crop & hat. Good cond. \$50. Valerie, 286-8835.  
 STORM WINDOWS - Various sizes, good cond. 363-7119 after 6.  
 TRUMPET - Blessing & Standard w/hard & soft case, music books, excel cond. \$75. Lou, Ext. 4605.  
 2 SHIRTS - Men's, new, medium, blue & brown. \$10 for 2. Ext. 3609.  
 FREE - Several bicycle wrecks for parts, frames, tires, etc. 744-2836.  
 PIANO - Babyy grand, Chase & Baker, mahogany, ivory keys, nice sound, good cond in & out. \$420. 744-2836.  
 CHRISTMAS WREATHS - Will take your order for Christmas. 3696/3613.  
 CORD OF OAK LOGS - Ready for splitting. \$50 & take them away. 289-0243.  
 COFFEE TABLE - Formica top, light colored for sectional furniture. \$8. 727-1329.  
 CAMPER TOILET - Small 8' slide on camper toilet, heater fully insulated. \$600. 589-1280 after 5.  
 CRIB - Sturdy, good cond, w/mattress. 924-5192 after 5.  
 BIKE - Girl's 3 spd, very good cond, hand brakes, kick stand, front & rear lights & racks. \$35. Lew Jacobson, Ext. 2462.  
 MINI BIKE - 1973, Sears deluxe model, 3 1/2 hp, spring suspension, very good cond. \$80. 924-6610.

### Real Estate

**Real Estate advertised for sale or rent is available without regard for the race, color, creed or national origin of the applicant.**

### For Sale

JAMAICA WEST INDIES - Residential lot, in Spanish town, in Willowdene development, approx 5200 sq ft. \$4500. Tom, 929-6646.  
 LAKE RONKONKOMA - Wooded 1/2 acre, large 4 bedrm ranch, large exp attic, garage, 1 1/2 baths, fenced, desirable. Sachem #5. George, 588-6352.  
 7 ROOM HOUSE - 4 rms upstairs, 3 downstairs, full cellar, garage & breezeway, hot water baseboard heat, cyclone fence, storm windows. Moriches. \$29,500. 878-0237.  
 NORTH CAROLINA - 52 acre dairy farm, house, barns, silos. \$82,000, (919) 542-3347.  
 NORTH SHORE - 3 bedrm house, 1 1/2 baths, partially finished, basement, 23,000 btu ac, 20x30 garage w/pit, fireplace, knotty pine interior, appliances, 15 min to Lab, low, low taxes. 744-3312.  
 SHOREHAM - Cape cod frame & brick, living rm w/fireplace, dining, den, 3 bedrms, kitchen, 2 baths, center hall, 2 car garage, 1/2 acre, beach rights, many extras. \$60,000. 744-8949.  
**For Rent**  
 ROCKY POINT - 1 bedrm studio apt, large living rm near Sound w/yard, no pets. 543-1399.  
 VERMONT VACATION - 3 bedrm mobile home, 10 acres, close to fishing, golf, tennis, avail weeks or weekends. Bob, 473-8186.  
 TO SHARE - 5 bedrm house in Medford, 7 mi to Lab, \$30/wk + 1/2 util. Jack, Ext. 4255, 289-6708.

1 BEDRM APT - Lg living rm, fireplace, sunroof, ac, dishwasher, laundry facilities, private entrance, approx 15 min to Lab, avail immediately. 928-8071.  
 SUBLET - Nov 1 - Feb 29, garden apt, unfurn, Coram, 15 min from Lab, rec facil. \$225/mo. 698-8371 eves.  
 BROOKHAVEN - 7 rm furn house, avail Jan 1, 1976 for 6-7 months. 286-3851 after 6.  
 MEDFORD - 2 bedrm apt, 10 min from Lab, garage, back yard, appliances including washer, dryer, dishwasher. 924-7516 after 6.

### Wanted

SET LADIES GOLF CLUBS - Ext. 4662.  
 TO RENT - 1 bedrm apt for couple in Patchogue from Nov. Ext. 3221.  
 SOUP & BEAN LABELS - Campbell's, send to F. Chandler, Bldg. T-89.  
 GIRL'S BIKE - 24", good cond, reasonable. G. Wagner, 751-6921.  
 BOWLER - BNL women's pink league, are you bored tues night at 6 pm? Bowl w/the #1 gregarious team. Jeanne Weber, Ext. 2003.  
 WOMEN - For mixed league volleyball, games start at 5:30 on mon eves. Pat Oster, Ext. 4763.  
 FREE LAWN MOWERS - Or engines waiting to be discarded, novice mechanic needs experience. Morris, Ext. 4312.  
 HIGH CHAIR - In good cond. Lucy, 862-8164.  
 USED VW'S - Running or not. Mike, 281-3460.  
 BABYSITTER - Pref woman on site, to care for my 3 1/2 yr old on tues & thurs afternoons. R. Evans, Ext. 3044.  
 VIEWMASTER PICTURE REELS - 286-8195.  
 AIR COMPRESSOR - To pump up to 150 lbs, 110V. Howard, Ext. 3260.

HOME - For 2 toy poodles, 6 yrs old, male & female, black & gray, needs home w/lots of love. Ellie, Ext. 2978.

HOUSEKEEPER/MOTHER'S HELPER - To start in Jan, 2 small children, light cleaning & cooking. Shoreham area. 744-4611.

8-12 HP ENGINE - For parts. George Hrabak, Bldg. 480. Ext. 3515, 589-2389.

GRINDER - TOOL POST - For lathe. George Hrabak, Ext. 3515, 589-2389.

CYLINDER BORING MACH - Any cond. George Hrabak, Ext. 3515, 589-2389.

CLOTHES HANGERS - Wire, ask for Izzy, Ext. 3696.

BABYSITTER - For 2 1/2 yr old, 5 days/wk incl weekends for shift worker. N. Patchogue/Bellport area, leave message. Pauline, Ext. 2238.

BOY SCOUT UNIFORM - Size 12-14. Irma Carl, Ext. 3330.

GUITAR - W/nylon strings, reasonable price, want to learn. 744-4611.

### Car Pools

QUEENS - Flushing, driver wishes to join or form car pool. Vivian Pai, Ext. 3429.

PORT JEFFERSON - To join or form car pool, 8:30-5, flexible. Ru-fang Chen, Ext. 3691.

E. SETAUKET - Opening for 1 or 2 rider/driver, vicinity of Ward Melville H.S. Lew, Ext. 2462.

### Lost & Found

LOST - Small Memorex tape, probably misdelivered from CSCF, tape has orange stripe, Tapei written on it & perhaps CSCF No. N64599. K. Selllett, Ext. 4698.

### Services

CONCRETE SPECIALISTS - Patios, walks, etc. Pat, 744-8425.

CUSTOM CARPENTRY - Specializing in kitchens, bathrooms, decks, excel workmanship, free estimates. 654-1274 after 5.

TREE REMOVAL - Chain saw work, experienced, free estimates, cord wood, hauling. Ken, 289-8212.

VW MECH - Dealer trained, lowest prices, guaranteed work. Fred, 924-3556.

VINTAGE CARS - Available for hire. 281-3460.

ASPHALT PAVING - Bob, 475-4382.

WANT FIREWOOD - Will cut & haul wood from your property, free. Bob, 744-4984 after 6.

PET PORTRAITS - Cat or dog done in pastel form color photos, very reasonable. Bob, Ext. 4411, 727-2346 eves.

TYPING - Thesis, manuscripts, etc., references, reasonable. Ext. 3609.

GARAGE SALE - Oct 25-26, 9-5, 45 South Friedner Lane, Bohemia, 2 streets north Martin's Paint Store, Sunrise & Locust Ave.

HEMS - Reasonable rates. Sharon, Ext. 3334, 878-2591 after 6:30.

FISHERMEN - Do you want your catch deliciously smoked? 744-9411.

HAVE TRUCK - Odd jobs done, yards, cellars, garages, cleaned, light hauling. 727-1329.

TREE SERVICE - Removal, topping, cabling, pruning, chain saw work, estimates. 727-1329.

**Ads left out of this issue because of lack of space need not be re-submitted in order to run in next week's issue**

### Classified Ad Policy

#### Deadline is 12 noon Monday for publication Friday of the same week.

- The Brookhaven Bulletin's classified section may be used only by active and retired Laboratory employees.
- All items for sale or rent must be the advertiser's property.
- Ads for material acquired for resale in association with a full or part time business cannot be accepted.
- Firearms offered for sale or trade may not be brought on site.
- Ads not carried because of space restrictions will be held for publication in the next issue.
- Ads are run only once and must be resubmitted if they are to be repeated.
- Ads should be restricted to 20 words or less and typed or printed on the form provided, and must bear the employees signature.

<input type="checkbox"/> For Sale: Auto & Auto Supplies	<input type="checkbox"/> Wanted	Check <input checked="" type="checkbox"/> the heading applying to your ad. Print or type your ad in 20 words or less.
<input type="checkbox"/> For Sale: Boats & Marine Supplies	<input type="checkbox"/> Carpools	
<input type="checkbox"/> For Sale: Miscellaneous	<input type="checkbox"/> Lost & Found	
	<input type="checkbox"/> Services	

Ads concerning property for sale or rent cannot be accepted on this form. Special Real Estate Ad forms are available at the Office of the Brookhaven Bulletin, Room 111, 40 Brookhaven Avenue.

Employee's Signature \_\_\_\_\_ Life No. \_\_\_\_\_ Ext. \_\_\_\_\_  
 Send to: Brookhaven Bulletin, Building 460, 40 Brookhaven Avenue (Ext. 2345).

(Name & Phone No. To Call)