

BROOKHAVEN BULLETIN

Volume 31 - Number 16 / April 22, 1977
BROOKHAVEN NATIONAL LABORATORY

Twelve high school seniors, sons and daughters of Laboratory employees, will go off to college in the fall each with \$1,250 towards their expenses. They are the winners of the 1977 AUI Trustee Scholarships.

Barry Auskern is the son of the late Allan B. Auskern and is a resident of East Patchogue. After graduating from Bellport Sr. High School, he plans to attend Massachusetts Institute of Technology.

Kevin Bilms, son of Vincent J. Bilms (Fiscal), intends to go to Tulane University in September. He is currently a senior at Miller Place High School and lives in Miller Place.

Manya Blumberg, daughter of Leroy Blumberg (Accelerator) attends Earl L. Vandermuellen High School and lives in Port Jefferson. She plans to enter Radcliffe-Harvard University.

Daniel Gordon, is the son of Barry Gordon (DAS). He is a student at Ward Melville High School and is a resident of Setauket. In the fall he will be off to M.I.T.

Catherine Lanigan is the daughter of Thomas P. Lanigan (PEP), is a senior at Brentwood Sonderling High School and lives in Brentwood. She has elected to attend SUNY at Fredonia.

Patricia Meinhold, daughter of Charles B. Meinhold (S&EP), attends Longwood High School and lives in Brookhaven. She plans to go to SUNY at Binghamton.

Jonathan Montag, son of Mordechai Montag (Physics), is a resident of Plainview and attends Bethpage High School. In September he will enter University of Pennsylvania.

Stephan Month is the son of Melvin Month (Accelerator) and lives in Stony Brook. He is currently a student at Ward Melville High School and will go to Harvard in the fall.

Hugh Munoz, son of George J. Munoz (Physics), attends Newfield High School and lives in Centereach. He has decided to enter Emerson College.

Debra Pearlstein, daughter of Sol Pearlstein (DAS) will attend Williams College in the fall. She is a student at Earl L. Vandermeulen High School and lives in Port Jefferson.

Marla Rubinson, daughter of William Rubinson (Chemistry), is a student at Bellport Senior High School and a resident of East Patchogue. She plans to enter Brown University.

Michele Thomas is the daughter of Harvey Thomas (D.O.) and her home is in Jamaica, N.Y. She is a senior at August Martin High School and will go to Howard University in September.

The winners were selected from a field of 77 candidates by an independent committee appointed by the Educational Testing Service which administers the program for AUI.

This year, each AUI Trustee Scholarship will be in the amount of \$1,250 per year, for up to four years of study, an increase of \$350 per year over the former award of \$900. The increased scholarship which is effective in September, applies to all current scholarship holders, as well as to the 1977 winners.



Barry Auskern



Michele Thomas



Jonathan Montag



Patricia Meinhold



Hugh Munoz



Marla Rubinson

And The Winners Are . . .



Catherine Lanigan



Kevin Bilms



Manya Blumberg



Stephan Month



Daniel Gordon



Debra Pearlstein

A Midas Dilemma

Saudi Arabia will not choke U.S. oil imports for economic reasons according to political analyst Dankwart Rustow. But, there doesn't seem to be any doubt they have and will use it as a political weapon in the Middle East struggle.

Rustow points to energy independence as America's only real alternative. At the conclusion of his talk, which was presented as the second AUI Distinguished Lecture of the year, he gave strong support to President Carter's energy program.

The Organization of Petroleum Exporting Countries, commonly known as OPEC, was the main focus of Rustow's lecture. Rustow, Distinguished Professor of Political Science at the City University of New York, asserts that Saudi Arabia has the power to balance OPEC oil supply with demand, and hold prices down or raise them.

"The Saudi's are the *de facto* price setters within OPEC, because they not only have the largest production, but they also have the largest excess capacity over current production," said Rustow. "They could beat anybody at the price cutting game."

Rustow advises that the United States can rest "comfortably" as Saudi Arabia maintains the supply/demand balance between OPEC and the oil importing nations, while holding to an even oil price. But, he points out, "this is not going to last very long."

Oil consumption has been rising in the industrial countries despite the deterrent of increasing prices. In addition, oil imports have been increasing at a rapid rate. This problem does not exclude the United States.

Rustow explained that the late President Johnson's oil import quota was a "drain America first policy." He said, "this policy was to protect our (then) relatively high internal oil price, at a time that we could have had oil from abroad relatively cheaply and without political strings."

In the aftermath, that policy has forced us to import all the more oil at a time when it is dear and political strings are indeed attached."

Aside from vast oil resources, which aren't expected to run out until well into the 21st century at projected usage, the only thing Saudi Arabia has is desert. Their oil profits, then have to be invested outside Saudi Arabia with the industrial nations.

Pouring profits into other countries just makes Saudi Arabia more dependent on the world economic state. So, Saudi Arabia is unlikely to trigger any price or supply policy in OPEC that would upset the economics of industrial nations to any great degree.

Estimates on the need for oil imports from OPEC project a 20 percent increase between now and 1980 for the industrial world. This increase is the maximum that Rustow predicts OPEC would be able or willing to make available to the world market.

"Willing to make available," adds Rustow. (Continued on page 2)

Reports Available

The following reports are now available to the Laboratory Staff and to Affiliates of the ERDA, AUI, and BNL. Others may purchase it from the National Technical Information Service, U.S. Department of Commerce, 5285 Port Royal Road, Springfield, Virginia 22161. Staff members should call Ext. 3484:

- BNL-50577 \$3.50
Development of a Glass Polymer Composite Sewer Pipe from Waste Glass. Progress Report No. 1 for period July - September 1976
L.E. Kukacka, et al.
- BNL-50578 \$3.50
Cementing of Geothermal Wells. Progress Report No. 2 July - September 1976
L.E. Kukacka, et al.
- BNL-50552 \$6.00
Future Residential and Commercial Energy Demand in the Northeast. March 1976
J. Lee

- BNL-50586 \$4.00
Energy Transport Control in Window Systems. September 15, 1976
A.L. Berlad, et al.
- BNL-50587 \$3.50
Anomalous Length of Electron Bunches as an Instability Threshold. October 15, 1976
E. Messerschmid and M. Month
- BNL-50590 \$5.50
Hydrogen Production and Storage in Utility Systems. Semiannual Progress Report for period July 1, 1975 to December 31, 1975. January 1976
A. Beaufre, et al.
- BNL-50582 \$3.50
Regenerative Process for Desulfurization of High Temperature Combustion and Fuel Gases. Quarterly Progress Report No. 2 for period July 1 - September 30, 1976
F.B. Kainz, et al.
- BNL-50583 \$3.50
Tritium Storage Development. Progress Report No. 8 for period April - June 1976
P. Colombo, et al.

- BNL-50561 \$11.00
Issues in Clustered Nuclear Siting: A Comparison of a Hypothetical Nuclear Energy Center in New Jersey with Dispersed Nuclear Siting. September 1976
P.M. Meier and D. Morell
- BNL-50513 \$4.00
Nutrients, Toxins, and Water in Terrestrial and Aquatic Ecosystems Treated with Sewage Plant Effluents. Final Report of the Upland Recharge Program. January 1976
G.M. Woodwell, et al.
- BNL-50585 \$4.00
A User's Guide for GRAPEL - Graph for Engineering Language. July 1976
L. Osterer
- BNL-50580 \$4.50
The Energy Situation in New England. November 1976
J.P. Brainard, et al.
- BNL-50581 \$4.50
Report on the Regional and System Type Disaggregation of the Single Family Dwelling Space Heat Energy Demand Sector. August 1976
T.L. Muench, et al.

- BNL-50562 \$6.75
Regional Economic Impacts of Nuclear Power Plants. August 1976
W. Isard, et al.
- BNL-NUREG-50574 \$4.50
Correlation of High- and Low-Cycle Fatigue Data for Incoloy-800H. October 1976
P. Soo and J.G.Y. Chow
- BNL 50575 \$4.50
Acid Rain Research Program Annual Progress Report - September 1975 through June 1976. September 1976
L.S. Evans and G.S. Raynor
- BNL-50576 \$4.50
Energy Management in Residential and Small Commercial Buildings. Annual Report, Fiscal Year 1976. July 1976
J. Batey, et al.

Clocks Ahead

Daylight Savings Time goes into effect at 2 a.m. Sunday, April 24, so set your clocks ahead one hour.



Professor Dankwart Rustow had a discussion with staff members the morning after his AUI lecture on "The OPEC Revolution."

Rustow (Cont'd)

... "is the term that I would apply, above all, to Saudi Arabia. There is no good economic reason for the Saudis to increase their production indefinitely and therefore make themselves ever more dependent on outside economic forces . . . there is much to be said for them to keep the oil underground."

An economic paradox leaves Saudi Arabia with a major policy problem that Rustow calls "the King Midas dilemma." Maintaining their production will allow prices to rise in OPEC. This will bring them more money.

Or Saudi Arabia can increase production to keep prices down. Then they still make money by selling more. In either case, they have money that they have to invest abroad and become more dependent on the economy of other nations.

"In making their particular choice of policy, in monetary terms they can only win and in policy terms they can only lose, in a sense," said Rustow. "That's why I call it a dilemma."

Given these choices, Rustow warns that Saudi Arabia will then turn to political considerations as the basis for their decisions. He cited examples of successful oil-backed Saudi Arabian pressure on the

United States in various political/military considerations.

Rustow pointed out that, "It seems totally undignified, totally unnecessary, and totally disastrous for a major world power to make itself dependent on imports and give a (political) handle to outside forces."

America's vast coal reserves, which are the greatest in the free world, were highlighted as a possible solution to the import problem. He also noted environmental safeguards in suggesting that the United States turn to coal as an effective energy source.

Per capita energy consumption in the United States is 2.5 times that of Europe and Japan. Conservation would be the key to relieving this burden of unnecessary waste, he said.

"If we either cut down energy consumption to 1.8 times per capita [that of Europe and Japan] or over a longer period, mobilized our coal reserves, we would not have to import a single drop of oil from the Arab countries or anywhere else," said Rustow.

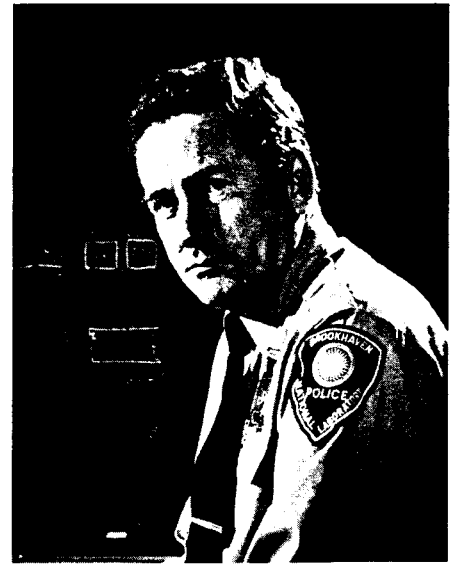
He added that the federal auto-efficiency standard of 27.5 miles per gallon in President Carter's program would be a good start. Predictions suggest that such a conservation measure would curtail oil imports from Arab countries by two-thirds, according to Rustow.

Burglary In Progress

It was past midnight and Patrol Officer Bernard Doran was driving to his home in Terryville, after working a double shift at the Laboratory. As he neared his home, he spotted a red Mustang parked on the street, facing the wrong way. Then he saw a young man put an object in the trunk and jump in the car where a companion was waiting.

Doran was suspicious because the car was parked in front of the house of a woman he knew who lived there with her two children. Acting immediately, he took down the license plate number, then circled the car to make sure the rear plate matched the front. When the occupants saw they were under surveillance, they sped off.

Patrol Officer Doran called the Suffolk County Police and gave them the license plate number. They checked and found there had been a burglary in the house and, yes, indeed, they did catch the burglars - thanks to Doran's tip. In fact, after a two-week investigation, they made seven arrests, clearing forty-two other crimes committed in Terryville, Selden and Port



Bernard Doran

Jefferson Station.

The Suffolk County Police commended Doran's quick thinking. "If it were not for this officer's alertness in taking down the license plate number," said Detective McDonald, "it is doubtful that an arrest would have been made."

Benefit Statements Mailed

The annual personalized statement of each employee's present insurance and retirement benefits will be mailed next week to the home address of all regular full-time and eligible part-time employees.

The statement reflects each individual employee's various group insurance coverages (premiums, beneficiaries, and disability benefits) and AUI and employee contributions (including current allocation) to the retirement plan.

The purpose of this statement is to provide employees and their families with a better understanding of their AUI benefits program and to insure that their insurance coverages and beneficiaries are correct and up to date.

Tea & Sherry Party

The Hospitality Committee is having its Tea and Sherry Party on May 19th. The theme will center around Long Island.

If anyone has any fish nets, clam rakes, seashells, etc. to lend the Committee, it will be greatly appreciated. Please contact Grace Cohen at 475-4038.

Speaking Locally In April

Addendum:

April 1 - Seymour Holtzman (Medical), Saxton Street Middle School Frost Valley Environmental Experience, on **Field Biology**

April 16 - William Wilhelm (Accel.), Custer Institute, Southold, on **Solar Energy Applications**

April 19 - Maxwell Small (DAS), Southampton Town Board Open Meeting, on **BNL's Water Recharge Program**

April 21 - Maxwell Small (DAS), Scarborough, Maine, Town Board Open Meeting, on **BNL's Water Recharge Program**

April 22 - Marian LeFevre (Medical), Sachem High School Panorama Week, on **Combining Careers: Wife-Mother-Scientist**

April 28 - Andrew Stoddard (DAS), South Ocean Avenue School Career Day, Patchogue, on **Oceanography as a Career**

April 28 - Abe Seifert (Plant Engineering), South Ocean Avenue School Career Day, on **Engineering as a Career**

April 28 - Joyce Tichler (DAS), South Ocean Avenue School Career Day, on **Careers in Computer Science**



Paul Piccione (left) and Ed Szczepanik with the Laboratory bulldozer which helped in the control of brush fires this week.

visor of site maintenance. According to Suffolk County Executive John V.N. Klein, the current rash of fires are the worst in the county's history.

In Time of Need

Brush fires have been plaguing Suffolk County for the last two weeks and on Tuesday it was Signal One countywide. Fires in Gordon Heights, Rocky Point, Bohemia, Middle Island, Setauket and Mastic Beach were the reason for the highest priority signal. County Control asked for as many volunteer firemen as possible to be released from their jobs, and for equipment aid from Brookhaven.

Paul Piccione, a heavy equipment operator, and supervisor Ed Szczepanik took a D-7 bulldozer to a major fire in Gordon Heights. The job of the bulldozer is to make fire breaks to enable the firemen to get into the area. It can be hazardous work and very often the dozer operator must work on the outskirts of the fire to make the lane. Piccione, who is highly skilled in the operation of this machine, worked all afternoon in this particular area and cleared several lanes for the firemen.

Mutual aid is vital in the control of brush fires in the county and the Laboratory has contributed people and equipment on numerous occasions. "We have done it a lot in the past and we plan to do it in the future," said Roy Barone, general super-

IBEW Meeting

Local 2230, IBEW, will hold its regular monthly meeting on April 28, 1977, at 8 p.m. in the Knights of Columbus Hall, Railroad Ave., Patchogue.

There will also be an afternoon meeting at 2 p.m. for shift workers in the Union Office at 31 Oak Street, Patchogue.

On the agenda will be regular business, committee reports and the President's report.

Arrivals & Departures

Arrivals

- Robert W. Christensen Plant Engrg.
- Cornell P. Davis Plant Engrg.
- Ann B. Roddy Personnel
- Gary A. Schaum Plant Engrg.

Departures

- Anne-Marie Glynn Medical
- Chandra P. Khattak Physics
- Edna D. Sceviour Medical

Trip to New York City

The Hospitality Committee is planning two group railroad trips to the city. The first trip will be Wednesday, May 4, and the second will be Wednesday, May 11. Each trip will be limited to 120 persons. Departure will be at 8:32 from the Patchogue LIRR Station. The round trip fare is \$2.45, children under six years ride free.

Reserve a ticket by sending your fare through the U.S. mail to P.O. Box 322, Upton, New York 11973, no later than Thursday, April 28 for the first trip, and Thursday, May 5 for the second trip. Make checks payable to "Cash." Your tickets will be given to you at the train station. Refunds will be made only if cancellations are received at least two days before the planned trip.

Missing

A portable amplifier/microphone was borrowed from Public Relations. Will the person who has it please return it.

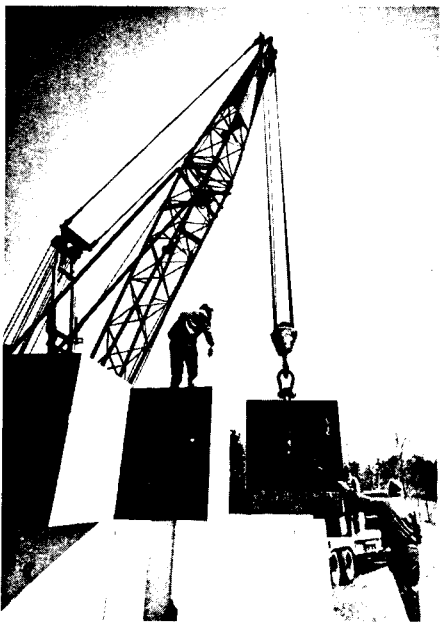
Lecture Reminder

"Energy Choices For The Future," a BNL lecture particularly addressed to young people, will be given by Mark Goldstein, on Wednesday, April 27 at 8 p.m. in Berkner Hall.

CREF Values

1976			
January	\$40.31	February	\$39.76
March	40.75	April	40.10
May	39.69	June	41.60
July	41.21	August	40.94
September	41.59	October	40.62
November	40.40	December	42.66
1977			
January	\$40.27	February	\$39.30
March	\$38.73		

Megalith Retires



The giant Megalith that has stood sentinel at the Laboratory entrance for two years is being retired. Plant Engineering personnel worked this week removing the 210 tons of shielding blocks which had been donated by the Accelerator Department. The design was created by Beverly and Marty Plotkin. Plans are under way for another exciting new sculpture to take its place sometime in the future.

BROOKHAVEN BULLETIN

Published weekly
for the employees of
BROOKHAVEN NATIONAL LABORATORY

BERNICE PETERSEN, Editor
DOUG HUMPHREY, Photo-Journalist
CAROL PETRAITIS, Editorial Assistant

40 Brookhaven Ave., Upton, N.Y. 11973
Telephone (516) 345-2345

CARL R. THIEN, Public Relations Officer

Letters To The Editor

To the Editor:

I have lived in this area for over forty years. The district was always referred to as the "Pine Belt." Does anyone know what is happening to the pine forest that lines Upton Road? From all observations it seems to be dying.

Has anyone looked into the reason for its demise?

—Virginia M. Austen

Herman Haller, Site Superintendent, replies:

The Pine Loper is a skeletonizer of pine tree needles. Once skeletonized, the equivalent of defoliation, the tree dies. The Pine Loper attacks white, red, black and pitch pine.

The infestation started in May of 1970. By 1971, most of the trees in approximately (50) fifty acres that were affected died.

Upton Nursery School

The 1976-77 school year is nearly over, but Upton Nursery School is planning for next year. Applications for three and four-year-old children of Laboratory employees will be available in the Recreation Building and Berkner Hall or from the enrollment chairperson, Sharon Paschos, 928-4270.

There will be a general meeting for all current and prospective parents on Thursday, May 19, at 8:00 p.m. in the Recreation Building. Election of officers for the coming year will take place at this meeting. Please plan to attend.

Sports News Bowling

Black & Blue League

4/6/77: Congratulations to Ed Sperry on his club awards with a 613 scratch series and a 682 gross series. High games for the night were Ed Sperry 244/202, Barney Brehm 227, Fred Hohmann 209, Bill Kristiansen 201, Ellen Jacobson 172, Debbie Antonio 168, Colleen Holland 164. High gross pots were won by Barney Brehm 269 and Ellen Jacobson 239.

4/13/77: High games for night were Lew Jacobson 235, Ed Sperry 215, Ellie Kristiansen 177. High gross pots were won by Lew Jacobson 259 and Colleen Holland 226.

Green League

With two weeks of bowling and one position night left, only twelve points separate the top three teams. The Super Cools stayed in first as they took eight. A. Kreisberg had a 203 game. The Charley Browns took six to stay in second as G. Fales had a 207. The Got-A-Hit-Ums are in third place taking only four points while the Blue Jays took seven. T. Iarocci bowled a 201/203 for the Blue Jays. The Trouble Shooters managed to take eight from the Freon Loaders. The Pinball Wizards only took five with F. Green having a 202 game. The Sparks took eleven from the Bubble Boys with J. Carroll having a 202.

Purple & White League

4/7/77: The Penthos remain in first place followed by the Flounders. Ted Erickson did it again - 209/234 for a 612 scratch series. Nice games also by Marshall Bull 222, Jim Petro 200/212, Nate Carter 204, and Gene Hassel 204. Ellie Murgatroyd was high for the women with a 173. Nice games also by Liz Bull 166, June Polistina 165, and Wilma Eriksen 163.

4/14/77: The Penthos are still in first place and only four points behind are the Flounders. Ben Belligan and Gene Hassel



Concord String Quartet

BERA Concert Series

The last concert of the current series will take place on Wednesday, May 4, at 8:30 p.m. in Berkner Hall. The Concord String Quartet will present a program consisting of Schubert's Quartet No. 9 in G Minor, Bartok's Quartet No. 4, and Beethoven's Quartet No. 13, opus 130.

The Concord String Quartet is the youngest of the nationally acclaimed string quartets. Its members, Mark Sokol, Andrew Jennings, John Kochanowski, and Norman Fischer, are all in their 20's. Each year the quartet makes an extensive tour of the United States, performing on the major college campuses from Yale to the University of California, and appearing on leading chamber music series throughout the country. The Concord is now in its second year as Quartet-in-Residence at Dartmouth

were high for the men with a 202 each. Nice game by Joe Mayeski, 201. Betty Roche had high game for the women with a 183. Nice games also by Nancy Overton 172, Mary Austin 171, and Lorraine Petro 167.

Red League

The Designers knocked down 3001 pins including a 1091 game and took 11 from the Old Timers. J. Ferrero had a 226 game and A. Pinelli bowled 201. This jumps the Designers into fourth place. The Old Timers still lead by one point over the second place Sandbaggers who took eight. R. Jones bowled 203 and E. Meier a 201. The 76'ers split 5-6 and are in third, only 2½ points out of first. R. Larsen had a 225 and J. Petro a 215. It appears the Red League will be decided on Position Night. The Bubble Boys had some nice games but lost all eleven to the Sparks. R. Barberich had a 223 and W. Kollmer a 207. The Cosmos took six while the Anachems and Freon Loaders both came away with three. Should be a great finish in this league!

Pink League

The Gutter Getters took seven from the Pinsplitters enabling them to take a seven point lead for first place. The Med Squad lost seven to the Odd Balls and are in second place. High games for the night were Lindora Boyd 180/162, Betty Jellett 167, Alice Trubisz 167, Kay Hunt 164/156, Grace Fales 160/156, Carol Beckner 157/155, Colleen Holland 155.

Highlights of the Industrial Tournament for Women

The BNL women finished eighth in the standings. Helen Keeley won the most valuable player award for the BNL team.

Mountain Club

About forty people showed up in Manorville last Saturday for the canoe trip down the Peconic River. The 7-mile trip to Riverhead took about five hours including an hour's stop for lunch. The only mishaps were one canoe that swamped going over a low dam and a youngster who fell into the icy water while swinging over the river on a rope during the lunch break. Special thanks to Ray Tessmer of DAS for doing all the work in organizing the trip and finding enough canoes for everyone.

College in Hanover, New Hampshire.

Soon after its formation in 1971, the Concord String Quartet won the Walter W. Naumburg Chamber Music Award, and was similarly honored by the Fromm Music Foundation at Harvard University. The Concord maintains a large and varied repertoire ranging from most works of the standard repertoire to many of the more obscure ones like the quartets of Arriaga and the Schoenberg Quartet Concerto. Of particular interest is their commitment to the performance and commissioning of new works - a commitment which has resulted in new quartets from some of America's leading composers, among them George Rochberg, Lukas Foss, and Jacob Druckman.

General admission	\$4.00
Persons over 65 and students with ID	2.00
Under 18	1.00

The next canoe trip will be on the Delaware at Narrowsburg, N.Y. the weekend of May 14. Canoes can be rented there for \$13/day but reservations must be made in advance so anyone interested in going should contact Don David 4821 or 286-2267 by Friday April 22.

There will be an overnight hike to Slide Mt. in the Catskills on the weekend of April 30. Anyone interested in going should contact Dave Potter 4234 or Peter Tuhy 3379 for details. Also that weekend there will be tidal canoeing in Stony Brook Inlet for kayakers and moderately good caoneists. Contact Dick Watson 3788 for details.

Bicycling

The first of two tours of historical landmarks along Sound Avenue took place April 17, under the auspices of the Riverhead Preservation and Landmarks Society. Four cyclists met at Berkner Hall parking lot and biked the 18 miles by back roads to Doctors Path and Sound Avenue, to join the main group of about 30 or 40. The four BNLers were Ernest Courant, Gerry Morgan, Dan Radeka and James Watson. The historical tour was about 5 miles east from Doctors Path and included several farm houses and the old Northville Academy and Congregational Church. Total distance was about 45 miles in perfect weather. The second tour will start at the same place and run from Doctors Path west and will take place May 1 from 2:30 to 4 p.m. A contribution of \$1.00 is asked by the Society.

The next BNL event coming up is the Beginners Tour this Sunday (April 24), from Berkner parking lot to Wildwood Park and return. Bring your lunch. Round trip distance is about 25 miles and will be at a modest pace for beginning tourers. It is recommended that participants try biking 10 miles or so without stopping.

Don't put off registering for TOES, the 100 mile overnight tour of eastern Suffolk on May 14 or 15. The cost is about \$14 which includes lodging on Shelter Island, dinner and breakfast and sag wagon. Knock off \$5 if you camp, but double the \$1.50 fee if you register after May 1. Limited to 40 cyclists, 6 from BNL.

For additional info contact Gerry Morgan, Ext. 4841, Bldg. 815.

Classified Advertisements

Placement Notices

The Laboratory's placement policy is to select the best-qualified candidate for an available position, with consideration given to candidates in the following order of priority: (1) present employees within the department, with preference to those within the immediate work group; (2) present employees within the Laboratory as a whole; and (3) outside applicants.

Each week, the Personnel Office lists new personnel placement requisitions. The purpose of these listings is, first, to provide open placement information on all nonscientific staff positions; second, to give employees an opportunity to request consideration for themselves through Personnel; and, finally, for general recruiting purposes. Because of the priority preference policy stated above, each listing does not necessarily represent an opportunity for all candidates. As a guide to readers, the listings are grouped according to the anticipated area of recruitment, as indicated below. Except when operational needs require otherwise, positions will remain open for one week following publication date.

For further information regarding a placement listing, contact the Personnel Placement Supervisor, Ext. 2874 or 2882.

LABORATORY RECRUITMENT: Opportunity for present Laboratory employees.

147. **LABORATORY CUSTODIANS** - Two positions. Plant Engineering Division.

OPEN RECRUITMENT: Opportunity for present Laboratory employees and outside applicants.

148. **DEVELOPMENT ENGINEER** - BSME or equivalent with emphasis in thermodynamics and heat transfer. Project engineering and hardware background desirable to work with solar heat pumps and cooling systems. Moderate travel required. Department of Applied Science.

149. **DEVELOPMENT ENGINEER** - BS/ME or equivalent in physics, electrical or mechanical engineering. Hardware development experience desirable. Solar heliostat project. Accelerator Department.

150. **PHYSICS ASSOCIATE** - MS or equivalent in physics with strong background in reactor core analysis and associated computer codes. Reactor Division.

151. **CHEMICAL ENGINEERING ASSOCIATE** - MSChE or equivalent with extensive background in nuclear power reactor radioactive waste (liquid and solid) management. Experience in thermal stability testing (DTA, TGA, DSC) desirable. Department of Applied Science.

152. **ECOLOGY ASSOCIATE** - BS or equivalent in biology or environmental science. Must be competent in data preparation and reduction, presentation and writing of reports and manuals. Grant supported, one year appointment. Department of Applied Science.

153. **TECHNICIAN** - AAS degree or equivalent in electrical technology. Experience in high voltage, high power RF systems with good skills in building and troubleshooting logic circuitry. Accelerator Dept.

154. **TECHNICIAN** - To work with fruit flies and plants. Food preparation, glassware washing, and low power microscopy. Part-time position. Safety and Environmental Protection Division.

155. **COMPUTER OPERATOR** - Shift work. Applied Mathematics Department.

156. **RESEARCH SERVICES ASSISTANT** - Part-time position. Department of Applied Science.

Autos & Auto Supplies

69 FORD CAMPER SPECIAL - F250 w/11½' camper, crawl thru boat, 4 cu ft refig, mono head, demand water, heater, stove w/oven. 286-1097.

STEEL RADIAL TIRE - JR70-15 on Ford rim, excel cond. \$20. Sue Norton, Ext. 2907, 475-5834 after 5.

74 HONDA 450 - Excel cond, 2000 mi, \$900 or trade for pick up of equal value or van. 281-9245.

75 SUZUKI - Tm, 75 cc motorcross or trail, excel cond, helmet & car racks. Ed Rogers, 924-3821.

72 SUZUKI - 125 cc motorcycle, road or trail, 8 spd. 653-5989.

RIMS - (2) 14", 5-hole, \$5; (1) 13", 4-hole, \$3. Ext. 4784, 744-6767.

72 DATSUN - B110 coupe, new tires, brakes, clean. \$1100. 878-4614.

71 TRIUMPH BONNEVILLE - 650 cc, low mi, very good cond. \$1200. 878-4614.

74 JEEP - ¾ ton pickup, V8, auto ps/pb, am/fm, 2 sets tires, cap, low mi, clean. \$3900. 286-3356.

75 SUZUKI 550 - Excel cond. \$1250. Bob, Ext. 3313.

63 DODGE DART - New transmission, good cond. Ext. 3535, 744-1942.

69 FORD LTD - Wagon, 10 pass, ps/pb, auto. \$375. W. Lundgren, Ext. 3800, 585-3794.

76 DODGE VAN - Custom, silver, many extras. \$6350. 744-7731 eves.

MOTORCYCLE HELMETS - 1 Bell super magnum, white in box, 1 Bell topex, white, damaged. \$50 for both. Jack, Ext. 2253.

75 HONDA CB750 - Blue, luggage rack, crash bars. \$1400. Jack, Ext. 2253.

SNOW TIRE - 650-13 w/out rim. \$12. Ext. 3609.

KAWASAKI F250 - Street/trail, immaculate, under 2000 mi. Asking \$550. Bob, Ext. 4411, 727-2346.

70 FIAT 124 - Sport spider conv, 5 spd, radials, good cond, 25-28 mpg. 928-4481 after 6.

TIRES - Very good cond, 6:00-13, 7:50-14, E70-14, 6.95-14 & 7:00-14. \$15/pr. Ed. Ext. 4636.

Autos & Auto Supplies

71 FORD WAGON - 10 pass, mech excel, ac, good tires, many parts replaced. 751-8590.

74 GREMLIN - 6 cyl, 3 spd, std, am/fm 8 track. \$1250. Ext. 2495.

66 PLY STA WAGON - V8, auto, 85,000 mi. \$150. Ext. 2495.

75 PLY DUSTER - At/ps, am/fm radio, rear defogger, 21,000 mi. \$2500. Joe Dispart, 281-8943, Ext. 3284.

72 HONDA - 350 cc, excel cond, red & black. \$600. Bill, 281-2217.

TIRE - Goodyear steel belted w/w, GR78-15, never used. \$40. 581-5827.

TIRE & RIM - Ford or Merc, 6:50-13, new cond. \$13. Ernie, Ext. 3357.

73 VEGA HATCHBACK - Auto, radio, green, good running. \$900, or best offer. Saxon, 929-4701.

64 VW VAN - Recently rebt eng, new clutch, brakes, gen, good trans. Asking \$400. Don, Ext. 4551, 281-3093.

RIMS - 2, 5-hole, 15", VW rims. Asking \$8. Don, Ext. 4551, 281-3093.

68 VW SQUAREBACK - Excel trans, new brakes, many new parts, good mi. \$525. Don, Ext. 4551, 281-3093.

AIR FILTER - AFL-89 for 68-74 Olds, 68-75 Pontiac V8's. \$1.50. Steve, Ext. 3469.

75 YAMAHA 100 - Rear rack, very low mi. \$500. Ext. 4702, 286-8586 after 6.

69 HONDA - 750 cc, K-O custom motorcycle, black/chrome, excel cond, low mi. \$1400. Ed, Ext. 4447, 231-7529.

MOTORCYCLE JACKET - Women's leather, Beau Breed, brown, size 11, worn once. \$55. Ed, Ext. 4447, 231-7529 eves.

FUSE KIT - Opel, Mercedes, Audi, BMW, etc., 60¢; tuneup kit, 64-67. Ext. 3609.

TIRE - 165-15, Michelin steel belted radial. 475-0144.

PICK UP CAMPER - Excel cond, sink, stove, heater, etc. 732-4593 after 6.

67 PONTIAC CATALINA - Sedan, ps/pb, in good cond w/good tires. \$375. 475-1494.

65 DODGE CORONET - 6 cyl, 4 dr, good running cond. \$400. Ext. 4423, 286-8673.

TR-3-B - Very rare, no rust, no dents, excel cond, hard & soft tops, wire wheels, many extras. \$2000. 878-1083.

75 VW RABBIT - Custom, 4 spd, tape deck, am/fm stereo, excel cond. \$3000. 298-2657.

70 VW - Good cond. Ext. 3155/3217, 732-3145.

66 FORD FALCON - Good running cond, body needs paint. Best offer. Ext. 3370, 281-0901.

74 PONTIAC VENTURA - 6 cyl, good running cond. Bill, 941-4820.

73 BUICK REGAL - Low mi, very good cond. Ext. 4701, 281-2877.

70 CHRYSLER - 2 dr, ps/pb/p seats & windows, very good tires, excel cond in & out. \$1050. Ext. 3319, 751-7140.

66 VW SQUAREBACK - Dealer rebt, good tires & snows, excel cond. Ext. 3319, 751-7140.

72 BLAZER - Auto, ps/pb, wide tires & rims, excel cond. Ext. 3278, 281-6365.

76 SUZUKI 550GT - Touring, windshield, crash bars, saddle bags. Howard, Ext. 3260.

66 CHEVELLE - SS 396, 4 spd, 5000 mi on rebt motor, excel body & interior, mech perfect. \$1000. 744-2688.

71 FORD LTD - Country squire sta wagon, completely equipped, good cond. Book value. \$950. Ext. 2923, 286-0747.

68 BUICK, SKYLARK, p/s, a/c, r/h, auto. \$450. 878-0897.

Boats & Marine Supplies

17' THOMPSON - \$40. For information call Ext. 2935 or 473-8995.

PLYWOOD DINGHY - Good cond, needs coat of paint, \$75. Ext. 3593.

38' HUBERT JOHNSON - Sportfisherman, fb, fwc, 100 hrs, dbl planked, needs paint. Sacrifice \$3300. 654-0875 after 6.

24' ZOBEL - Lapstrake hull, hdt, 125 hp Chrysler crown, extras, ideal family/fishing boat. \$500. 286-9619.

17' BOAT - Clamming or fishing, trailer, brand new, extras. \$1200. 286-8582 after 5.

30' TRUSCOTT - Sleeps 4, galley, head. \$1700. 727-5816.

SMALL BOAT - 13' Traveller & 10 hp outboard. \$150. 286-8305 eves.

18' THOMPSON - In/outboard, elec winch, cox tandem trailer, good cond. Asking \$1800. 727-5912.

STARTER SET - 15' Runabout, 35 Johnson, trailer, extras, painted, varnished, ready to go, must be seen. \$400. Lee, 472-0721.

18' SKIFF - Lyman, 4 cyl gray eng, extras. \$700. Tom, 325-1524.

28' PEMBROKE - Cabin cruiser, sleeps 4, refrig, stove, flying bridge, twin 190 hp Chevy engs, etc. \$7900. 928-5130.

16' BOAT - 35 hp Evinrude & boat trailer. \$650. Mac, Ext. 2012, 475-1008 after 5:30.

15' TEE NEE TRAILER - \$75. Ext. 2881, 286-3372 after 6.

26' ULRICHSEN SKIFF - 6cyl Chris Craft eng, sleeps 4, head. \$1600. 581-7656.

22' THUNDERBIRD - F/g, twin 120 hp, i/o, d/f, cuddy cabin, head, canvas, extras, excel. \$3500. 281-2767 eves.

18' THOMPSON - In/outboard, 4 cyl, Chevy 120 hp, Cox tandem trailer w/elec winch, excel cond. 288-1707.

14' RUNABOUT - Wood seats, steering cables, good cond. \$200 or make offer. 751-3242.

21' JERSEY SKIFF - Cuddy cabin, navy top, good cond, V8, FWC, \$1400. Ron, Ext. 4082.

20' DAY SAILER - 1973 Newport Holiday, fiberglass, s/s rigging, aux motor, mint cond. 286-2445.

12' SAILBOAT - Fiberglass covered, made from Boy's Life plans, same as sail fish, good cond. \$250. Joe, Ext. 4089.

30' TRUSCOTT - Sleeps 4, galley, head. \$1700. 727-5816.

Miscellaneous

GAS RANGE - Kenmore, eye level & lower oven, copper-tone, like new. \$200. Ext. 4595, 981-3371.

POLAROID LAND CAMERA - Model 420 w/focused flash, very good cond. \$60. Ext. 2972.

POCKET CAMERA - Keystone everflash 120 w/blt in elec flash, never needs flash cubes, very good cond. \$25. Ext. 2972.

BOWLING BALL - \$5; old books. 727-5912.

75 COX CAMPER - Cadet, excel cond. \$900. 727-1617.

10½' SLIDE IN CAMPER - Jacks incl, good cond. \$850. 727-1617.

FUTURISTS - Paoli Soleri's ARCOLOGY book, lg format, \$20. 928-1127.

70 KROWN HDTP TENT TRAILER - Stove, heater, toilet, 12V/110V, 8x10 awning, plastic windows, curtains, fully equipped. \$1200. 363-6940.

BEDSPREAD - Twin-sized, blue ribbed, 2 pairs, 30" cafe curtains. \$5 takes all. 286-3964.

ELEC BASEBOARD - Thermostats, clean convenient heat. Ext. 3870, 732-3003.

UPRIGHT PIANO - Old, plays well, good for beginner. \$350. Tony, Ext. 3658.

TRAILER - Pop up, Bravo 72, sleeps 8, stove, ice box, 2 tables, trunk, excel cond. Jerry, 475-5591 before 3, Ext. 3303 after 5.

COX CAMPER - 1972, sleeps 6, sink, stove, heater, ice box. \$700. W. Lundgren, Ext. 3800, 585-3794.

LAWN MOWER - Old fashioned, reel type, person powered. 286-9158.

KITCHEN SINK - White, double basin, 24"x48", used. 286-9158.

BEDRM SET - White, suitable for young girl, double dresser & headboard. \$75. 363-9527.

DRESSER - Natural pine. \$25. 363-9527.

GIRL'S BICYCLE - Rollfast 3 spd w/hand brakes, excel cond. \$25. 363-9527.

FORD ECONOLINE - 6 cyl, auto, fully equipped, self contained, reasonably priced. Bill, Ext. 2292, days, Ext. 3035 eves.

2 TWIN MATTRESSES - \$20 each; 2 modern end tables, \$15 each. Ext. 3687.

POWER AMP - Marantz 240, 125 watts per channel, guaranteed mint cond. \$125. Ext. 4701, 281-2877.

CAMERA - Kodak Instamatic trimlite 18, new cond. \$15. 941-4328.

KEYSTONE CAMERA - Movie 8 mm, leather case, excel cond. \$25. 941-4328.

GE AM/FM STEREO CONSOLE - 12" speakers, record player, excel cond. \$60. Pete, Ext. 3350.

SINK - 20" wall mounted w/fixtures, white porcelain. \$10. Pete, Ext. 3350.

PAINT - Sears best exterior acrylic, 5 gals haze blue, 1 gal white. \$20. Pete, Ext. 3350.

REFRIGERATOR - 14 cu ft white Philco, 4 yrs old, excel cond. Asking \$120. 585-9315 after 5.

MEN'S WHITE LOAFERS - Brand new, size 10EEE. \$22. Ext. 2456, 473-0178.

BICYCLE - Ross girl's bike, 20" wheels, very good cond. \$25. 928-0969.

AIR COND - Philco, 8000 btu, very good cond. \$160. Ed, Ext. 4636.

FM TRANSCEIVER - 2 meter, Motorola 10 watt, old but works good. Asking \$25, will include mike & test meter. Don, Ext. 4576, 281-3093.

HOUSEWARES - New dinnerware, 45-pc Kensington ironstone, olive green, for 8, \$40; 32-pc semi vitreous white w/floral pattern, for 6. \$35. 928-1127 after 6.

EARTH SHOES - Never used, high boot, size 10½, light tan. \$30. 928-1127 after 6.

HOUSEWARES - Never used, elec wok, 12", \$30; elec fondue, 1½ qt. \$20. Ext. 2948. 928-1127 after 6.

SHIP BUMPER - Macrame covered, nautical motif wall decor, must see. \$100 ea. 928-1127, after 6.

MODEL AIRPLANES - U-control, gas eng, 36" wingspan, ENYA 19 V eng; 21" wingspan, Cox .049 eng, accessories. \$25 for all. 924-6354 after 5.

UPRIGHT FREEZER - Brand new. Asking \$500. 286-0398 after 5:30.

BABY CRIB - & mattress, good cond. \$20; youth bed w/removable sides, \$30; coach carriage, good cond, \$25. Larry Arnold, Ext. 2021, 281-2136.

RABBIT HUTCH - Lg wooden, 2 rms, plexiglass removable windows, shingle roof, 6 mos old. Jim, Ext. 4489.

OLD POCKET WATCHES - 1 Omega, 1 Westend railroad. 924-4789 after 4.

TENNIS RACQUET - Wilson Miss Chris, 4¾ light, \$7. Ext. 2041.

LG YARD & GARAGE SALE - Fri & Sat, April 22 & 23, N Halsey Manor Rd, Manorville, off Exit 70.

FREE POOL - 17' x 4', above ground w/in the wall skimmer, you take it down, pool will need liner. 475-2557.

MOTHER'S DAY PLANTS - Hanging baskets, fucia, ivy, geraniums, mums, etc. Pat, 281-1364.

PORTABLE STEREO - By General Elec, in sharp cond, tone & balance control, 3 spd. Asking \$60. Ext. 4461, Ext. 2512 eves.

FENDER BANDMASTER - Guitar amp, 55 w top & pre CBS bottom, will sell separately. Jim, 924-3312 mornings.

PORTABLE DISHWASHER - Kenmore, old but in good running cond. \$40. 727-5134.

FREE GERBILS - You must pass good home test. Bob, Ext. 4778.

BICYCLE - Girl's 2" good cond. \$15. 473-1295.

ELEC RANGE - GE self cleaning, \$100; 40" double oven, 4 yrs old, white, orig \$500. Don Ext. 3510.

21" POWER MOWER - Jacobsen Manor, reel type, 1956 model, still running & cutting, \$35; roto-hoe-cut 'n shredder for composting, 5 hp eng, like new, \$75, both for \$100. 475-6916.

CANARIES - Females, ready for breeding, \$15 each, 3 for \$30. Ext. 3185.

SKIS - Rossighol Strato 102's, 195 cm w/salomon heels, marker toes, 2 yrs old, excel cond. \$100 firm; Barrecafter poles, \$5. Ext. 4492, 286-0384.

REFRIG/FREEZER - 2 dr, Delmonico, 12 cu ft, good cond. \$75, 6 yrs old. 727-5467.

19" B&W TV - Zenith portable. \$20. Ext. 3486.

68 COX CAMPER - New canvas, fully equipped, excel cond. \$750. 281-5498, George.

LITTLE RED WAGON - 10" wheels, 14" x 32" bed; reel lawn mower, push powered, \$5 each or best offer. 744-9596.

23" B&W TV - GE, portable, excel picture no UHF, best offer over \$25. Jack, Ext. 2253.

POSEIDON REGULATOR - W/pressure gauge, like new, \$125. Naomi, Ext. 3699.

UPRIGHT PIANO - Plays well, good for beginners. \$350. Tony, Ext. 3658.

WASHER & GAS DRYER - \$100. Ext. 3080.

TRUMPET - & case, 1 yr old. Howie Bell, 732-1097.

DINING RM TABLE - Beautiful custom, 48" dia opens w/3 leaves to seat 14, pedestal base, dark oak, distressed wood. Asking \$800. Howard, Ext. 3179.

GIUITAR & AMP - 1966 Premier elec hollow body, \$75; National amp, 175 watts, 2 channel reverb, tremolo w/2 12" speakers, \$125. Roger, Ext. 4480, 928-2849.

STORM WINDOWS - 1 ea alum, 4'3"x4', 6'x4'. 281-9095.

HIKING BOOTS - Women's size 8, \$20; size 12 men's, size 5 men's, \$25 ea. Frank Kainz, 799-4896.

LAWN MOWER - Sears 20" rotary lawn mower, 9 cu in, practically new, \$50. Ext. 4092, 924-3938.

GE ELEC RANGE - White 30", 4 burners, lg oven, storage drawer, good cond. \$50. 281-5621 after 6.

CANVAS FLY - 16'x16' w/drop sides, poles & ropes, good cond. Joe, Ext. 4089.

SUN LAMP - \$8; green drapes for 13' wall w/traverse, make offer. Steve, Ext. 3469, 281-4371.

BEDRM SET - Mediterranean, triple dresser w/2 mirrors, 2 night tables, armoire, king size bed w/mattress & box spring. \$700. Steve, Ext. 3469.

GLASSES - Set of 8, Libby's silver leaf, \$4; screen, movie/slide, lenticular, 40x40. \$20. Ext. 3609.

70 VW CAMPER - Excel cond, pop top, sleeps 4, tent, trailer hitch. \$2200 firm. Fred Pffrath, Ext. 4407, 864-1214 after 6.

TRAILER - Sleeps 6, approx 18', good cond, all util. Asking \$1000, will consider less. Ext. 3260.

GREAT DANE PUPS - AKC reg, good blood line, 2 black females, 1 blue female, rare. 924-4789 after 4.

Real Estate

Real Estate advertised for sale or rent is available without regard for the race, color, creed or national origin of the applicant.

For Sale

1 ACRE LOT - 10 min from Lab, wooded. 924-3236.

MORICHES/CRYSTAL BEACH - 4 bedrm ranch, patio, garage, in ground pool, s&s, beach & dock rights. \$35,000. 878-0684.

ROCKY POINT - 4 bedrm colonial, 2½ baths, fp, basement, ac, wooded setting, beach rights, assumable mortgage. \$46,500. Ext. 4362, 744-7667.

DELAWARE CO NY - 2 acres, 1973 mobile home, 62'x12' furn, like new cond. \$14,500. 289-0265 after 5:30.

BELLPORT VILLAGE - 6-rm house, walk to village & stores, ferry to beach, 1½ baths, 12 min to Lab. \$39,999. 286-8945, 286-1097.

CLEARWATER BEACH - 100x150 bldg plot, nr Gardiners Bay, walk to priv beach, marina rights. Asking 13,500. Steve Marino, Ext. 3469, 281-4371.

SOUND BEACH - Mother/daughter, plus income two-bedrm cottage on independent lots. \$34,900. Ext. 4784/3566, 744-6767.

N SHIRLEY - 2 bedrm ranch, lg kitchen, fp, s&s, carpeting, treed ½ acre, fenced. June, Ext. 2970, 399-0836.

STONY BROOK - Eton house, H section, walking distance to Univ, 4 bedrm colonial, encl patio w/sun-roof, 2½ baths, ½ acre w/trees, quiet court. \$58,000. Ext. 3864.

WADING RIVER - 3-4 bedrm cape on ¾ acre, treed, landscaped, fp, w/w carpet, full bsmt w/patio doors. \$54,000. 929-8313 after 5:30.

E SETAUKET - Colonial, 4 bedrms, 2½ baths, finished basement, patio, must see. 751-8918 after 5:30.

MOBILE HOME - 1976, 12x60, all appl, w/w carpeting, shed, landscaping, extras, Riverhead. \$13,800. 727-4995.

HANDYMAN SPECIAL - Port Jeff Village, small house, small taxes, 2 bedrms, front porch, very nice property. \$18,000. 473-9121 after 6.

BELLPORT - 3 bedrm ranch, 2 yrs old, acre, landscaped & partly wooded, lg kitchen, full basement, 5 appl, mortgage assumable. \$32,500. 286-1440 eves.

CALVERTON - 15 min to Lab, to qualified buyer, no cash down, take over \$22,900 mortgage, 3 bedrm, 1½ baths, 5 appl, w/w carpeting, central ac, townhouse. Ext. 2978, 369-2526.

For Rent

FURN ROOM - Port Jeff Sta, \$25 wk. 929-6179.

STRATHMORE EAST - Furn house, June 1 - July 15, 3 bedrm, 2 bath, 10 mi from BNL, 12 mi from SBSU. \$350/mo incl util. Ext. 3791, 928-5124 after 6.

VT CHALET - Week, month & season rates. 757-5599 after 4.

SAYVILLE - 3 bedrm ranch, laundry rm, fenced yd, near schools, \$310/mo + security. 289-0413.

PATCHOGUE AREA - Apt for rent, 2 bedrms, kitchen, living rm, private entrance. \$250/mo incl heat. Walt, Ext. 2907, 698-0576.

Wanted

PERSONS INTERESTED IN YOGA - Will teach free yoga classes on site. Call Cecile Rideau, Ext. 3631.

BICYCLE - Boy's 20", good cond or better, reasonable price. Colin, Ext. 4154.

CORDOVOX/ORGAN PLAYER - To fill in with established band. Charlie, Ext. 3950.

21" LAWN BOY MOWER - Any cond. Fred, Ext. 4662.

AU PAIR POSITION - Young French student, niece of BNL exchange scientist, 1968, seeks "au pair" position with American family, Sept '77. 475-9294.

PLAYPEN - Crib, high chair, umbrella handle fold-type stroller. Theresa, Ext. 3124.

TWIN BED - Mattress & spring. Jim, 246-4079, 862-6946.

STORM DOOR - Wood cross-buck, 37"x81", reasonably good cond. Bob, Ext. 3309.

PERSONS INTERESTED IN DISCUSSION GROUP - On science and society. 331-1396, 473-0189.

MANUALS - Auto repair, shop & owners. Mike, 281-3460.

PERSON INTERESTED IN - 18' Pembo boat & motor, needs work. 751-8918 after 5:30.

EXCHANGE ALBUMS - Jazz, rock, to record on quality equip. Jack or Gary, Ext. 2253/2093.

PEOPLE DESIRING CREDIT UNION - Due to high interest rates, write Bob G., AGS, Bldg. 911.

2 USED TIRES - A78 x 13 or B78-13, pass inspection. 286-8353.

ORGAN/ACCORDIAN PLAYER - To fill in w/estab 2-pc band. Charlie, Ext. 3950.

EMPTY CONTAINER - From Leggs pantyhose to make dolls for children. Irma, 744-9785.

PIANO - For Middle Island Presbyterian Church, free or very reasonable. 924-6443, 744-0354.

HOME - For 9-week old puppy, part sheep dog, black/brown/white female. Joe Dispart, Ext. 3284, 281-8943.

HOME - For 3 pure white kittens not albinos & 1 black & white kitten, weaned. 929-4522.