



Windows at Night, one of the paintings by Karl Schrag, which will be featured in a exhibit of contemporary art to be shown in Berkner Hall beginning September 8.

—photo by Geoffrey Clements

Art Show Opens Next Week

Four prominent contemporary artists will be represented in a distinguished show of their recent works at Berkner Hall beginning on September 8.

The BERA-sponsored exhibit will feature the works of Karl Schrag, Paul Jenkins, Tom Hardy and Jean Paul Agosti selected from the Kraushaar and Martha Jackson Galleries of New York City.

Schrag, a painter and printmaker, was born in Karlsruhe, Germany and came to America in 1938. His work has been exhibited widely and is in major national and international collections. He now lives and works in New York and Maine.

Jenkins, born in Kansas City, Missouri, attended classes at the Kansas City Art Institute. At the same time he explored poetry, writing and dramatics. Originally associated with abstract expressionism, he has been one of the foremost exponents of expanding the possibilities of color in art.

Hardy, a sculptor, was born and still lives in Oregon. Known on the West Coast as a teacher and artist, he has traveled and worked in Mexico, Egypt, Algeria, and Morocco. He has exhibited and been awarded major commissions throughout the country.

Agosti is a Parisian painter, whose work was first brought to New York for exhibition in a one man show at the Martha Jackson Gallery in October 1976. This first U.S. show attracted much attention on the contemporary art scene.

Employees are invited to attend the opening reception on Thursday, September 8, from 4 p.m. to 8 p.m. Refreshments will be served, and free babysitting will be avail-

able in the Recreation Hall from 4 p.m. to 6 p.m.

This unique show which has been designed to appeal to many tastes will continue through September 22 and may be viewed on weekdays between the hours of 11 a.m. and 1:30 p.m.

No Bulletin Next Week

Due to the holidays next week on Monday, September 5 and Tuesday, September 6, there will be no Brookhaven Bulletin on Friday, September 9. Ads received during the holiday week will be printed in the September 16 issue of the Bulletin.

Stockrooms To Close On September 16

In order to complete the annual Physical Inventory of stores materials, all stockrooms will be closed on Friday, Sept. 16, 1977. Users are requested to withdraw sufficient supplies prior to the normal stockroom closings at 3:00 p.m. on Thursday, Sept. 15, 1977. Emergency requirements can be obtained by calling the Supply and Materiel Division office, Ext. 2972 for approval and withdrawal instructions.

The closing of stockrooms does not affect departmental stockrooms or the delivery of Liquid Nitrogen, Liquid Helium, Dry Ice, or Compressed Gases. Your cooperation in keeping emergency requests at a minimum is appreciated.

Transferring Solar Technology

A large mobile trailer close to Building 120 has been abuzz with activity as new personnel have come aboard to get under way the Solar Technology Transfer Program for the Northeast. Under the direction of Bill Graves (DAS), the new program funded by ERDA is located at BNL to serve the 11-state northeastern region.

ERDA laboratories are expected to play an increasing role in accelerating the general use of solar energy. Utilizing their substantial scientific, engineering, and support facilities, they can offer valuable consulting and educational services to the public and to the rapidly developing solar industry.

The overall objective of solar technology transfer is to aid in the commercialization of economically feasible solar energy systems. BNL's program will initially concentrate on solar hot water and space heating, covering both retrofitting and integral design of passive and active systems in new residential construction.

The program will support local field offices operated in cooperation with state and federal agencies. Technologists at these offices will provide information, referral services, and personal consultation to the local community. Through the field offices the engineering and scientific resources of the national laboratories will become more accessible.

BNL will provide technical support to contractors, builders, architects, and heating engineers to assist them in the design, specification, and installation of efficient, reliable systems. Educational efforts will be directed not only to the building industry and related groups such as local government officials and mortgage lenders, but also to the public.

This latter audience has been uppermost in the minds of the program's new staff, assisted by BNL's Public Relations Office, for the past several months. Disseminating information to the public - the ultimate consumer of solar devices - is a must. That's why ERDA through its program at Brookhaven will be a sponsor of the New England

Solar Energy Association's second annual conference and exhibition at the Hartford Civic Center September 8-11. Called BTU '77 (for "Better Thermal Utilization"), the exhibition will bring together more than 100 exhibitors of solar hardware and energy conservation techniques and devices.

BNL will send its own traveling energy research exhibit. The public will also get a preview of solar buildings that will soon be brightening the New England landscape. Models and plans of ERDA R&D projects, representing taxpayer dollars at work, will be on display.

In support of this major energy show, BNL has arranged for films from ERDA and many other sources to be shown continuously in an energy theater. An advance educational display promoting public attendance at the exhibition has also been arranged by the Public Relations Office.

In addition to exhibits and films, BTU '77 includes public workshops on solar systems for new and existing homes, better conservation practices, solar hot water systems, solar technology for teachers, heating with wood, and energy savings through water conservation. Members of BNL's Solar Technology Transfer Program will participate in several workshops. Working with Bill Graves in BNL's new program are Drew Gillette, Ralph Jones, Ron Judkoff, and Gordon Preiss.

The general public is invited to attend BTU '77 on Saturday, September 10, from 10:00 a.m. to 10:30 p.m.; and on Sunday, September 11, from 10:00 a.m. to 7:00 p.m. Admission is \$2 for adults, \$5 for families, or \$1.50 for students and senior citizens. So why not take a trip to Hartford, Connecticut, next weekend and learn more about solar and energy conservation.

Those interested in attending technical presentations and roundtable discussions on Thursday and Friday, September 8 and 9, may register at additional cost with the New England Solar Energy Association, P.O. Box 541, Brattleboro, Vt. 05301, 802-254-2386.

Science's Role In Our Society

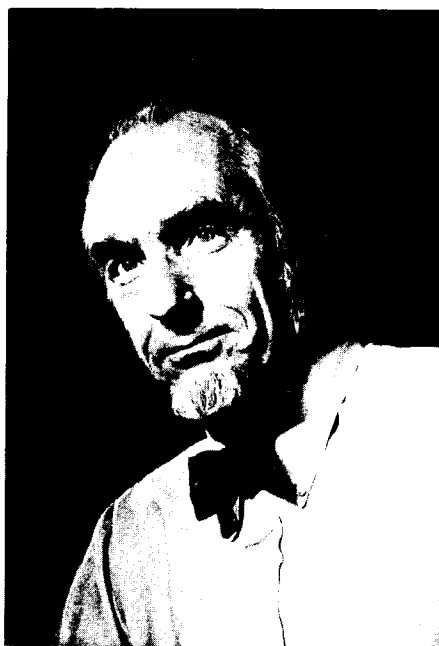
"On the Theory of Things, or, Does Science Have Anything to Say to Society," will be the subject of an address by R.C. Anderson, starting the fall Brookhaven Lecture series on September 14, at 8 p.m. in Berkner Hall.

There are hardly any public issues which do not reflect some aspect of science. They range from nuclear power and nuclear weapons, through a series of concerns over energy and the environment, to the teaching of evolution, the idea of progress, the limits to growth. On such issues, for the most part, it is the material consequences of research that occupies the public's mind and forms its attitudes.

In his lecture, Dr. Anderson will discuss whether science has anything to contribute beyond these effects and, in turn, can establish its own place in the general culture. He will explore the question, "Can science speak to both the larger as well as individual concerns in modern society?"

R.C. Anderson, Assistant Director for Scientific Personnel and Public Relations, has long been concerned with the interaction of science and society. A chemist by training, he joined the Chemistry Department in 1948 and was appointed Assistant Director of the Laboratory in 1956. For many years he has been interested in the public understanding of science.

In 1963 Anderson was Co-Director of the Oak Ridge Institute on Humanistic Discussions in Science. He was an invited lecturer to the Conference on the Impact of Science and Technology on Modern Society



R.C. Anderson

in Yugoslavia in 1964 and 1971, and to the Conference on Science and Technology in Developing Countries in Beirut in 1967. For 13 years he was a consultant to the National Youth Conference on the Atom. In 1970 he was selected as a Fellow at the Woodrow Wilson International Center for Scholars. Anderson was appointed by the Governor of New York to the Council of the State University of New York at Stony Brook in 1974 and was appointed Head of the Council in 1976.

A buffet supper will be served in the Brookhaven Center before the lecture beginning at 6:30 p.m. Reservations should be made in advance by calling Ext. 3541 before 5 p.m. Refreshments will be available in the lobby of Berkner Hall immediately after the lecture.

Just In Time

At 4 a.m. Sunday morning the plectron radio in Russell Dunn's bedroom blared out a signal 23. Dunn, a Firefighter in Safety and Environmental Protection, jumped out of bed and sped on his way to the scene of the call.

Lying in the middle of the road was a man in his mid-twenties. Dunn checked the man's pulse and saw that his eyes were dilated. He had lost all vital signs and needed oxygen quickly. Dunn took off his shoe and put it behind the man's neck to open the air passageway while other volunteer firemen were getting emergency equipment ready. Dunn used the resuscitator to give the man oxygen - his pulse returned - "he was alive again." The firemen transported him in an ambulance to the hospital. In the ambulance, the man again lost all vital signs and was resuscitated by Dunn a second time.

Later Dunn checked with one of the ambulance volunteers to see how the man was doing. He was fine, but had been hospitalized for testing to determine the cause of his problem.

Dunn, who is also an Eastport volunteer fireman, was the only emergency medical technician (EMT) on the scene. This was the first time Dunn had been involved in a life/death situation, and he credits his ability to remain calm during the emergency to the EMT training he received at the Lab.

On Tuition Refunds

With increasing numbers of employees returning to school after working hours to obtain degrees, it is timely to restate the Laboratory's tuition refund policy.

Any employee, no matter what job he may currently be performing, is entitled to apply for tuition refund for a course or courses to be taken pertinent to the work of the Laboratory. For instance, a person may now be a janitor or a clerk, but wish to pursue a degree in medical technology. This is a legitimate request.

To obtain prior approval of the courses to be taken, an employee should obtain a Tuition Refund Request form from the Personnel Office and present it to his supervisor for approval. In this connection, it should again be stressed that the courses may be pertinent not only to the employee's current work, but to the work of Brookhaven.

The Tuition Refund Committee gives final approval to the request. Of course, no employee will be reimbursed for tuition costs unless he completes each course with a grade "C" or better, and must present evidence of his grade at the conclusion of the course to obtain the refund.

Brookhaven reimburses 75% of tuition costs and laboratory fees, but does not pay for college fees, registration charges, books, etc.

For further information, call the Personnel Office on Extension 2885.

Cafeteria Menu

Week Ending September 9, 1977

Wednesday, September 7	
Tomato vegetable soup	
Keilbasy & sauerkraut	1.15
Grilled ham steak & 1 veg.	1.30
Hot deli - pastrami	
Thursday, September 8	
Cream of potato soup	
Southern fried chicken & 1 veg.	1.15
Macaroni & cheese & 1 veg.	1.05
Hot deli - veal & peppers	
Friday, September 9	
New England clam chowder	
Broiled filet & 1 veg.	1.15
Roast sirloin of beef & 1 veg.	1.35
Hot deli - meatballs & peppers	

Labor Day Food Service

At the Cafeteria the snack bar will be open from 9:00 a.m. to 2:00 p.m. daily on Saturday, Sunday, Monday and Tuesday, September 3-6.

The Tap Room at the Brookhaven Center Club will be closed on Saturday, Sunday and Monday, reopening at 5:00 p.m. on Tuesday evening, September 6.

The Vended Food Service in Building 912 will be in operation throughout the Labor Day weekend.



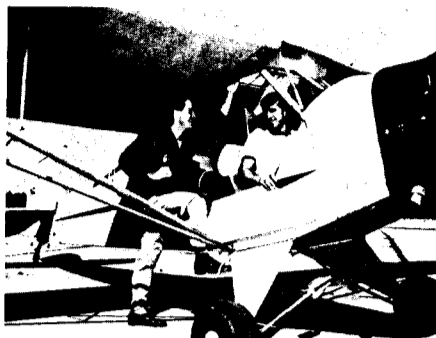
Bronnie Orłowski (Tech. Information) 1951



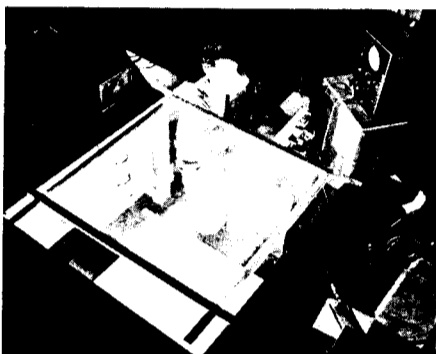
Bob Brown (Photo & Graphic Arts) 1948

The Way We Were

Here are some more pictures from Brookhaven's family album taken when the Laboratory was just getting started. The bowling alleys, left over from Camp Upton days, were in what later became the Cosmotron building, now used for ISABELLE research.



Bob Walton, at left, (Photo & Graphic Arts) 1948



Lloyd O. Davis (then in Electronics & Instrumentation Div.) 1949



Karl Walther, Glass Blower, 1947 (then in Physics Dept.)



Stephen M. Takats (Fire Dept.) 1948

In The Good Old Days

Sixty years ago, what is now the Laboratory site was selected for the construction of Camp Upton. The following excerpts are taken from a report prepared on January 15, 1918 by a Major O.K. Meyers, Construction Quartermaster. If you complain about your working conditions, consider those of the first employees to work on this site.

On June 20th 1917, travel orders and instruction were received to proceed to Yaphank, N.Y. to supervise the construction of the cantonment to be built there.

The site of the camp was determined and was located on a U.S. Geological map of the section. The factors controlling the location of the site were that the site should be centrally located on the property, to provide drill grounds on all sides, and that the prevailing winds would not pass over the stables, before reaching the barrack buildings.

The property was originally covered with a hard wood forest. The stumps had rotted level with the ground surface, being alive, numerous shoots from four to ten feet high grew from them. These stumps measured up to six feet in diameter and were so numerous that in many places large areas could be walked over by stepping from one stump to another. In addition there were from thirty to fifty pine trees to the acre, measuring up to twelve inches in diameter.

The month of July was one of discouragements. No one, not a resident on the ground could appreciate the hardships placed upon the contractors or could give them the credit due them for the manner under which they stood up under them.

Wages

The wages paid were those in force in Brooklyn as of June 1st, 1917. Unskilled labor was paid 37½ cents an hour straight time until instructions were received for payment of time and a half for overtime. Carpenters received 62½ cents an hour, double time Sat. and Sun. Brick masons 75 cents an hour, double time Sat. and Sun. Chauffeurs, \$4.00 day, \$35.00 week, 10 hours day. Labor foreman, \$6.00 week. Other mechanics ranged from 62½ cents to 75 cents hour.

The labor as a whole was very poor and was ready to take advantage of every opportunity to loaf on the work. This opportunity was frequently given them as the contractors were unable to secure reliable gang foreman in sufficient numbers.

An Auditor recommended by the American Institute of Accountants handled all

auditing work. The condition created by the inability of the time keeping department to properly handle their duties gave a number of the workmen and a few time keepers the opportunity to put through a number of false records.

The largest number of men employed on any one day was 15,000.

Living Conditions

The mosquitos from the salt marshes to the south found cover in the undergrowth, making staying out of doors or in the tents unbearable. Almost daily rains so saturated the ground as to cause temporary roads to become series of mud holes.

About 80% of the men were fed from two large and three small commissaries, the remainder cooking for themselves. The prices charged for meals were, unskilled labor 25¢, mechanics 35¢, and office force 40¢. The quality of food served was good. After the first month the sanitary conditions were satisfactory. The service was that generally found in a construction camp and was not satisfactory to a large number of the men. The poor service was due in part to the inability on the part of the commissary management to keep their employees for any length of time.

The heating plant at the Base Hospital has proven to be inadequate to heat all the buildings at the recent low temperatures (15 below zero January 1st). All wards were satisfactorily heated. Sufficient pressure could not be obtained to force steam to the buildings at the end of the mains. Better results would have been obtained had a smaller size and better grade coal been furnished.

The Fire Department was in charge of a retired captain of the New York City Fire Department. Working with him was a force which distributed water buckets, fire rails, extinguishers etc., and which made inspections to see that no unusually dangerous fire conditions occurred. A light truck equipped with hand extinguishers was held in readiness to answer any fire alarms. No fires except a few brush fires and automobiles occurred.

Water was obtained from drilled wells. No latrine was placed within 500 feet of well. Unfortunately there was not enough water to provide adequate bathing facilities for the employees.

Latrines seating facilities were provided for about 7% of the force employed. A six seat fly proof box with hinged lids,

arranged that they automatically closed, was provided. A medical officer was placed in charge of construction, location and care of latrines. The pits were burned daily with one gallon crude oil and fifteen pounds of straw.

Criminal Activity

As it was necessary to house all the men within the camp and as the camp was near New York City, it quickly became infested with a large number of professional crooks and men of the underworld. To handle the condition that resulted, it was necessary to employ a large number of detectives and men with police experience. At first the men arrested were taken before the local authorities but punishment for them could not be obtained. There was requested and established a U.S. Dist. Court at the camp.

During the period of nine weeks after the court was established there were tried 1021 cases, fines amounting to \$2705 and jail sentences of 900 days were imposed. In addition 309 men were held for grand jury. Arrests for assault were made, bribery, violating Sanitary and Fire laws, bringing liquor into camp, larceny, sodomy, fraud, as undesirable citizens, for gambling, loafing disorderly conduct, intoxication and other causes. In addition about 1000 men were escorted from the reservation, as they could not account for their presence or had remained after being discharged.

Arrivals & Departures

Arrivals

Bruce S. Brunschwig	Chemistry
Richard L. Coppola	Medical
Edward J. Davis	Plant Engrg.
Suling Fu	Biology
Alain E. Gentil	Biology
Drew A. Gillett	Applied Science
Kee P. Koo	Applied Science
Steven C. Kyle	Applied Science
Peter J. Schnitzenbaumer	Physics

Departures

Gundabhaktha Chikkappa	Medical
Craig R. Davidson	Applied Science
Ernest R. Eichler	Safety & Env. Prot.
Emilie Gerard	Medical
Richard C. Herrmann	Physics
CherylN Horne	App. Math.
Paul S. Kupferman	Applied Math.
Kenneth G. Murdter	Biology
Mark S. Raisch	Applied Science
George E. Schwender	Physics
Alan R. Sweedler	Applied Science
James E. Whitfield	Medical

BROOKHAVEN BULLETIN

Published weekly
for the employees of
BROOKHAVEN NATIONAL LABORATORY

BERNICE PETERSEN, Editor
DOUG HUMPHREY, Photo-Journalist
CAROL PETRAITIS, Editorial Assistant

40 Brookhaven Ave., Upton, N.Y. 11973
Telephone (516) 345-2345

CARL R. THIEN, Public Relations Officer

Service Awards September

Thirty Years

Marshall H. Bull.....Photography & Graphic Arts
Robert P. Brown.....Photography & Graphic Arts
Louis P. Caiola.....Plant Engineering
Robert J. Fuchs.....Reactor
Frank K. German.....Biology
Julius M. Hastings.....Chemistry
Malcolm A. Herbert.....Photogr & Graphic Arts
Charles Lutz.....Plant Engineering
Harry H. Maile.....Photography & Graphic Arts
William R. Vogel.....Applied Science
James D. Winters.....Plant Engineering

Twenty Years

Matilda H. Austin.....Physics
Basil DeVito.....Accelerator
Helen M. Forsberg.....Technical Information
Claire C. Kirkpatrick.....Central Shops
Charles B. Meinhold.....Safety & Envir. Prot.
Howard R. Pate.....Medical
Matthew J. Rosso.....Applied Science
William E. Swatton.....Central Shops
Warren E. Winsche.....Director's Office

Ten Years

Raymond C. Atkins.....Accelerator
Kenneth Batchelor.....Accelerator
David W. Booker.....Plant Engineering
Charles A. Brinkman.....Applied Mathematics
Albert M. Casper.....Accelerator
Theodore A. Daniels.....Applied Mathematics
John J. Elmore, Jr.....Medical
Donald I. Garber.....Applied Science
Alan V. Kuehner.....Safety & Environ. Prot.
Richard E. Machnowski.....Instrumentation
John H. Maddock, Jr.....Accelerator
Walter J. Mason.....Staff Services
Clarence C. Pittenger.....Applied Mathematics
William C. Venegas, Jr.....Accelerator

• Eleanor Kwiatkoski of the Plant Engineering Division celebrated her thirty years of service with the Laboratory on May 19, 1977.

It's Cricket

Last Sunday BICC met Princeton in a 35 overs match. Batting first, Brookhaven scored 81 for the loss of five wickets, a quite respectable score under the circumstances since the grass was very long and the scoring of the boundaries therefore difficult. Only two Brookhaven batsmen reached double figures; David Cox making 24 before being unfortunately run out and John Millener remaining unbeaten with 36. In reply Princeton fared poorly and collapsed to be all out for 39 giving Brookhaven their easiest win of the year. Hayat bowled very well after a lay-off of four years to take two early wickets, Millener took four, Dibyendu two, and Cox one. Grahame Williams did an excellent job standing in as wicket-keeper in the absence of Love, Snape and Dhar.

John Millener has been selected to play for an American All Star team which will face a selection of former and current West Indies test cricketers under the leadership of Gary Sobers at the Giant Stadium on Saturday, September 3.

Golf

The third BGA golf tourney was held Thursday, August 11, at Pine Hills CC. A large turnout of 42 golfers competed for nine prizes.

Despite the heat of that day, Les Lawrence carded an excellent 77 for low gross (18) honors. Other prize winners were: Bob Mills, low net 18 (63); Brant Johnson, long drive; Karl Neuberger, closest-to-pin; Mike Iarocci, low gross front (39); Vinnie Racaniello, low net front (32); George Korhut, low gross back (37); Otto Kammerer and Bill Sampson tied for low net back (30).

Bicycle Race

The annual fall 16.5 mile (26.6 km) bicycle race will be held on Sunday, Sept. 11 at 10:00 a.m. (rain date Sept. 25). Several other bicycle clubs on the Island have been invited. Indications are that the total number of outsiders won't be large.

A trophy for best time and medals to the first place winner in each category will be awarded, and certificates to all who finish. The male and female categories are junior (under 16), senior (16 to 39) and veteran (40 and over).

Registration will begin at the corner of Upton Rd. and Brookhaven Ave. at 9:00 a.m. An entrance fee of \$1.00 is charged. Entrants under 18 must have parents signature. For additional information or advance entry forms, contact G. Morgan, Ext. 4841, Bldg. 815.

Rec Program Roundup

Last Thursday and Friday were farewell party days for the children of the summer recreation program.

The annual splash party at the pool on Thursday evening brought out 75 children, ages 4 to 9, and featured races and contests for all to enjoy. Prize winners were: Donald Litcher, Randy Polywoda, Vincent Polywoda, Alyse Holden, Valerie Long, Greg Holden, Niku Thomas, Cathy Cassidy, Megan Holden and Lisa King.

The popular "monster day" on Friday morning was followed by an afternoon party with lots of goodies and games.

The Recreation Staff would like this opportunity to thank all the children and parents for all the help in making this summer program so successful. Hope to see you all next year!

Gym Temporary Closing

The gymnasium is scheduled to be closed for painting and other maintenance work during the period September 7 through September 30.

The use of the locker rooms and showers will not be affected by this closing.

Pool Schedule

Over the holiday weekend the pool will be open on regular hours (1 p.m. to 6 p.m.) on Saturday and Sunday, September 3 and 4, for employees, family members and guests.

The pool will be closed on Monday and Tuesday, September 5 and 6, BNL holidays.

Summer season tickets are valid through Sunday, September 4.

Beginning on Wednesday, September 7, the following schedule will be in effect:

Weekdays
11:30 a.m. to 1:30 p.m. (employees only)
5:00 p.m. to 9:30 p.m. (employees, family members, guests)
Saturdays & Sundays
1:00 p.m. to 6:00 p.m. (employees, family members, guests)

Admission
Daily: \$ 1.00 - employee, family member
\$ 1.50 - guest

Season: (3 month period, starting 9/7):
\$10.00 - individual
\$15.00 - family

Season tickets are being sold at the pool during open hours.

Guest Ruling: Only one guest per adult BERA member may be admitted to the pool. Adult BERA members may have more than one but not more than five guests at any one time by making advance arrangements with the Recreation Representative in the Personnel Office. Members will be responsible for the conduct of their guests or their children, or both.

Selected Reading

New Sci. 75, August 11, 1977
Geneticist at large. S. Festing. 360-2
Founding fathers of science education (I). D. Layton. 363-5

Science 197, August 19, 1977
Arthur Canfield Upton: New director of the NCI. B.J. Culliton. 737-9
China after Mao: Science seeks to be both Red and expert. D. Shapley. 739-41

Smithsonian 8, August 1977
A second coal age promises to slow our dependence on imported oil, but the rules this time will be different. D. Sheridan. 30-6



THE BNL WOMEN'S ALL STARS softball team were undefeated in their two special matches against Sunny's Girls, a team from the Brookhaven Town League. Kneeling (l-r) are: Debbie Walton, and Jill Kaufman. Middle row (l-r): Sydell Lamb, Karen Schaich, Jeannie Weber, Pat Manzella, Pat Oster, Freddie Gileta, Pat Webster, and Mickey Haller. Last row (l-r): Larry Musso (coach), Rosemary Mack, Gail Waite, Gail Thompson, Colleen Holland, Kay Hunt, Lynn Tice, and Ed Taylor (coach). Mike Zguris, another coach, was not present when this picture was taken.

—photo by Ray Tice

Softball

Mixed League

Balls & Strikes 9 - Hard Ballers 6

Roger Gileta and George Morgan both had home runs to lead the Balls & Strikes to victory.

Diamonds 26 - I Don't Know 4

It was a full team effort. The girls hit well, Jack Baer was 5 for 6 and Chuck Carlson hit a grand slam home run.

Turkeys 9 - Trouble 8

The Turkeys pulled it out in the last inning. Denny Klein hit a double; Lil Cahill was walked; then Glenn Snape brought them in to win it for the Turkeys.

Oh Kays 19 - TNT 3

Ruth Faine had 4 hits and scored 4 runs. Collos Lamb had 3 hits and Jim Garrison had two home runs (including a grand slam) for the Oh Kays. Once again Kay Hunt did a good job on the mound for the winners.

Hard Ballers 5 - Diamonds 3

There were two double plays for the winners by John and Adrienne Usher. The three runs scored by the Diamonds were the result of a home run hit by Pat Oster in this makeup game.

Final Standings - 2nd Half

Division	Won	Lost
TNT	5	2
Balls & Strikes	3	4
Diamonds	5	2
Turkeys	2	5
Division II		
Oh Kays	6	1
Hard Ballers	5	2
I Don't Know	2	5
Trouble	0	7

A play-off game is in order for Division I between TNT and the Diamonds. The Oh Kays are undisputed leaders in their division, having won the most games in both the first and second halves of the season.

Free Books

The NNDC Library has the following volumes to give away. If you are interested please contact Harriet Fadem, Ext. 2901/2/3 in the morning.

NUCLEAR SCIENCE
ABSTRACTS - Indexes
PHYSICS LETTERS A - 1967-1976
NUCLEAR PHYSICS B - 1967-1974

Reports Available

The following reports are now available to the Laboratory Staff and to affiliates of the ERDA, AUI, and NRC. Others may purchase the reports from the National Technical Information Service, U.S. Department of Commerce, 5285 Port Royal Road, Springfield, Virginia 22161. Staff members should call Ext. 3484.

BNL-NCS-50605 \$4.00
Isotopic Composition of the Elements and Their Variation in Nature: A Preliminary Report.
N.E. Holden

BNL-50613 \$3.50
Some Kinetic Studies of the Benzene-Hydrogen and Benzene-Methane Systems in the Temperature Range 600° to 800°C.
D.R. MacKenzie and F.B. Growcock

BNL-50630 \$4.00
Natural Sewage Recycling Systems.
Maxwell M. Small

BNL-50637 \$3.50
Individual Air Pollution Monitors. 2. Examination of Some Nonoccupational Research and Regulatory Uses and Needs.
M. Granger Morgan and Samuel C. Morris

BNL-NCS-50640 \$7.50
The Bibliography of Integral Charged Particle Nuclear Data.
T.W. Burrows and J.S. Burt

BNL-50647 \$4.50
Seasonal Performance and Energy Costs of Oil or Gas-Fired Boilers and Furnaces.
A.L. Berlad, H.C. Lin, J. Batey, et al

BNL-NUREG-50654 \$4.50
The Effects of Mean Tensile Stresses on High-Cycle Fatigue Life and Strain Accumulation in Some Reactor Materials.
P. Soo and J.G.Y. Chow

BNL-50656 \$4.00
A Conceptual Design of a 400-GeV Version of ISABELLE. ISA Division Staff.

BNL-50658 \$5.00
Magnet Safety and Reliability in Magnetic Fusion Energy Systems. A Summary Report.
J. Powell, D. Hsieh, J. Lehner, et al

BNL-NUREG-50664 \$5.50
Properties of Radioactive Wastes and Waste Containers. Quarterly Progress Report - October - December 1976.
P. Colombo and R.M. Neilson, Jr.

BNL-NUREG-50666 \$3.50
Evaluation of Isotope Migration - Land Burial. Water Chemistry at Commercially Operated Low-Level Radioactive Waste Disposal Sites. Quarterly Progress Report - July - September 1976.
P. Colombo, A.J. Weiss, and A.J. Francis

BNL-NUREG-50670 \$3.50
Evaluation of Isotope Migration Land Burial. Water Chemistry at Commercially Operated Low-Level Radioactive Waste Disposal Sites. Quarterly Progress Report - October - December 1976.
P. Colombo, A.J. Weiss, and A.J. Francis

BNL-50672 \$3.50
A Novel Method of Charging an Accumulator Ring.
A.W. Maschke

BNL 50627 \$4.00
Alternate Materials of Construction for Geothermal Applications. Progress Report No. 11 October - December 1976
M. Steinberg

BNL 50609 \$5.00
Reference Material Systems: A Sourcebook for Material assessment.
N. Bhagat

BNL 50641 \$4.50
An Initial Multi-National Study of Future Energy Systems and Impacts of Some Evolving Technologies.
V.L. Sailor

BNL 50643 \$3.50
Preliminary Results of 200 MeV Bunching Experiments.
G. Danby, et al

BNL-NUREG 50645 \$6.00
HTGR Safety Evaluation Division. Quarterly Report July - September 1976
D.G. Schweitzer

BNL-50600 \$4.00
Data Report Marsh/Pond System.
M.M. Small

(cont. page 4)

Reports (continued)

- BNL 50648** **\$6.00**
ISABELLE, A Proton-Proton Colliding Beam Facility. P.F. Dahl, et al
- BNL 50649** **\$4.00**
A Numerical Oil Trajectory Forecast Model Used to Assess the Hazard to Long Island Beaches from Oil Entering the New York Bight Apex from February 11-24, 1977. A.G. Tingle and D.A. Dieterle
- BNL-NUREG-50650** **\$5.00**
Compilation of References, Data Sources and Analysis Methods for LMFBR Primary Piping System Components. M. Reich, et al
- BNL 50651** **\$3.50**
A Computer Analysis of the Spread of Pollution - Long Island Beaches. A.G. Tingle
- BNL-50657** **\$3.50**
Cementing of Geothermal Wells. Progress Report No. 4, January - March 1977. L.E. Kukacka, et al.
- BNL-NUREG-50661** **\$7.75**
Reactor Safety Research Programs. Quarterly Progress Report, January 1 - March 31, 1977. Compiled by A. J. Romano
- BNL 50662** **\$3.50**
Development of a Glass Polymer Composite Sewer Pipe from Waste Glass. Progress Report No. 3, January - March 1977. L.E. Kukacka, et al.
- BNL-50665** **\$4.00**
Alternate Materials of Construction for Geothermal Applications. Progress Report No. 12, January - March 1967. L.E. Kukacka, et al.

Classified Advertisements

Placement Notices

The Laboratory's placement policy is to select the best-qualified candidate for an available position, with consideration given to candidates in the following order of priority: (1) present employees within the department, with preference to those within the immediate work group; (2) present employees within the Laboratory as a whole; and (3) outside applicants.

Each week, the Personnel Office lists new personnel placement requisitions. The purpose of these listings is, first, to provide open placement information on all nonscientific staff positions; second, to give employees an opportunity to request consideration for themselves through Personnel; and, finally, for general recruiting purposes. Because of the priority preference policy stated above, each listing does not necessarily represent an opportunity for all candidates. As a guide to readers, the listings are grouped according to the anticipated area of recruitment, as indicated below. Except when operational needs require otherwise, positions will remain open for one week following publication date.

For further information regarding a placement listing, contact the Personnel Placement Supervisor, Ext. 2874 or 2882.

- LABORATORY RECRUITMENT:** Opportunity for present Laboratory employees.
 - 303. PAINTER A - Two positions. Plant Engineering Division.
 - 304. RIGGER'S ASSISTANT - Plant Engineering Division.
 - 305. BUILDINGS & GROUNDS UTILITY WORKER - Two positions. Plant Engineering Division.
- OPEN RECRUITMENT:** Opportunity for present Laboratory employees and outside applicants.
 - 306. SYSTEMS ENGINEER - BS or equivalent in chemical or mechanical engineering. MS in operations research desirable. Strong statistical background and the ability to communicate well orally and in writing is essential. Department of Applied Science.
 - 307. COMPUTER SCIENCE ANALYST - BS or equivalent in science, plus experience in scientific programming in FORTRAN. Advanced degree and experience with large scale computers desirable. Applied Mathematics Department.
 - 308. OFFICE SERVICES ASSISTANT - Good clerical skills. Plant Engineering Division.
 - 309. METAL WORKER-MAINTENANCE A - Plant Engineering Division.

Autos & Auto Supplies

- 72 SAAB 99 - Needs clutch, excel body, am/fm stereo, 30 mpg. Rich, Ext. 2501, 924-4237.
- 74 GREMLIN - 23,000 mi, auto, ps/pb, extras. Dick, 286-8906.
- 65 BUICK SPECIAL - V6, good running cond, std shift. H. Rhodus, Ext. 3284, 924-7522.
- 73 PONTIAC WAGON - Ps/pb/ac. \$1650. 472-3534.
- 70 FORD FAIRLANE - 76,500 mi, ps/good cond. Best offer. Ext. 3130/3998.
- 66 CADILLAC - 55,000 mi, very good cond. Asking \$500. P. Klotz, Ext. 4474, 473-3689 eves.
- 67 PLY FURY - Excel body, lived in Calif, eng no problems, ps/pb, radio, roof rack. \$550. Ext. 3714/3008.
- 66 OPEL KADET WAGON - Mech good, good trans. \$200. 281-8222.
- 68 OLDS - Delta 88, 4 dr sedan, radio, ps/pb, ac good tires. \$250. Ext. 2634, 286-1290.

- 76 CHEVY MONTE CARLO - 15,000 mi, full equip, red w/white vinyl top, excel cond. \$4500. H. Farrell, Ext. 4668, 588-9548 after 5.
- 73 YAMAHA MOTORCYCLE - 250 cc, blue/white, sissy bar, pad, windshield, extras, 7000 mi, mint. \$500 firm. 281-1808.
- 73 TORONADO - Ps/pb/ac, am/fm tape, leather seats, 5 new belted tires, vinyl, mint. \$2500 firm. 281-1808.
- 71 GREMLIN - 6 cyl, std shift, runs good. \$800. AN5-3731.
- 76 DATSUN 8210 - 2 dr, am/fm, 14,000 mi, must see. Best offer. Ext. 3503, 924-7338.
- PEUGEOT DIESEL - Low mi, luxury, am/fm stereo, 8 track, sunroof w/windscreen, rust proofed, 38 mpg. Barbara, 924-4162.
- 69 DODGE MONACO - High mi, new 5 yr battery, 2 new tires, good mpg. \$550. 286-8517 after 5:30.
- 72 TOYOTA - Mk II sta wagon, 6 cyl, auto, 55,000 mi, radio, ac, new battery, muffler, radials, best offer. Alan, Ext. 3369, 289-3007.
- 64 FORD FALCON VAN - Reblt 302 V8, recently installed, hookup not complete. Asking \$300. 744-2096 or 929-8982.
- 65 OLDS - F-85, ps/pb, 4 dr, new suspension, exhaust, good transportation. Any reasonable offer accepted. Ext. 3623, 286-1944.
- 68 VW SQUAREBACK - 22,000 on new eng, shines in & out, rimmed snows, good running cond. \$875. 744-1116 after 6.
- 66 CHEVY VAN - 71 eng w/30,000 mi, many new parts. \$350. Hank, 3935, 744-9812.
- SNOW TIRES - Sears Dynaglass XST F78-14, mounted on wheels, used 800 miles, for Plymouth or Dodge. 2 for \$70. Joe Dispartti, Ext. 3284 noontime.
- TAPE DECK - Motorola, \$20, Philco, am radio, \$10. Larry Arnold, Ext. 2024, 281-2136.
- 65 OLDS - F85, V6, good cond. \$375. 744-3238.
- 70 RED ROVER - 3500s, completely automatic, \$750 or make offer, can be seen in parking lot at Lab police. 286-1971.
- 71 DODGE COLT - Automatic, good cond, light blue, 4 cyl, good mi. Denice, 289-4821 after 5.
- 75 PLY FURY SPORT - Ps/pb, good cond, must sell. Best offer. Ext. 3438, 924-0056 after 5.
- 2 RIMS - For 71 El Dorado. J. Soler, Ext. 3084, 475-4596.
- TIRE - On Ford 8-hole rims. 950-16-5 LT, 6 ply. \$50. J. Soler, Ext. 3084, 475-4596.
- 69 VOLVO - 4 dr, 4 cyl, high mi, good body. \$500. S. Rideout, Ext. 4108.
- 72 VW BUS - 65,000 mi, 20,000 mi on rebt eng, new radials, runs very well. \$1400. Tony, Ext. 4250, 928-1644.
- USED TIRES - Rims, repairs, low prices, free installation. Ext. 4597 lunch only, 475-4935 eves.
- TIRES - (4) 650 x 13; (2) SR155 x 13; (2) G78 x14; \$10-\$15. (4) HR78 x 14, 2 reg, 2 snows, \$120 installed. Ext. 4597, lunch only, 475-4935 eves.
- 67 PONTIAC - Bonneville convertible, ac/ps/pb, runs well. \$350. Ext. 3790.
- 72 HONDA - CB450, 9800 mi, new rear tire & battery. \$650. C. Nauman, Ext. 3412, 286-3764 eves.
- 75 AMC PACER - Bucket seats, std shift, must sell. \$2200. Gail, 878-4664 after 5.
- 76 YAMAHA - 145 mi, like new, excel cond. \$450. 298-8381 after 6.
- 76 HARLEY DAVIDSON - 125 cc, 250 mi, dual purpose, excel cond. \$600. 286-8758 after 5.
- 72 OLDS - Wagon, radio, ac/ps/pb, good cond. 878-1895 after 5.
- 68 PORSCHE 912 - 30,000 mi, no rust, eng out, all parts. \$2000. 281-2051.
- 75 MOTO GUZZI - 850T, 6000 mi, must sell. \$1550. 281-0510.
- 67 DODGE CORONET - High mi, good cond, int clean, very little rust, good commuter car. \$300. Ext. 2206, 751-0833 eves.
- VAN WINDOWS - 1 pr heart, \$30; spoiler for Dodge van, \$15. Bill, Ext. 4434.
- BACK SEAT - High, w/swivel & adj base, new, tan. \$75. Bill, Ext. 4434.
- 72 PLY FURY III - Ac/excel cond, 58,000 mi. \$1275. 475-5206.
- 75 SUZUKI 550 - \$950; Honda 450, excel cond. \$800. Bob, Ext. 3313.
- 74 BUICK ELECTRA - Ps/pb/pw, p/seats, tinted glass, steel belted radials, am/fm stereo. \$2995. 473-6386.
- 65 CHEVY IMPALA - Sta wagon, good running cond. \$200. 363-6037.
- 65 PONTIAC LEMANS - 2 dr, automatic, runs well. Ext. 3846, 924-3158 after 5.
- 72 TOYOTA CORONA - 2 dr, automatic, excel cond. \$950. Yataka Ishii, Ext. 3627, 345-3018.
- 75 PORSCHE 914 - 1.8 LT, maroon, 5 spd, overdrive, excel running cond. Bob, 744-8980, 473-5522.
- 69 OPEL KADETT - Wagon, 4 spd, 5 mo old eng, 6 new tires, trans 3 mo old. Asking \$500. 281-6462 after 6.
- 68 BUICK LE SABRE - Convertible, mech excel, clean, needs top. \$400. 286-2320.
- 68 FORD GALAXIE 500 - Perfect mech, small V8, r&h, good reliable transportation. \$250. 286-2320.
- 67 INTERNATIONAL - P/u, 1/2 ton, high mi, good trans, sm V8, std trans. Rich, Ext. 2982.

- 70 FORD MAVERICK - Excel mech, r&h, good tires, clean in & out. \$500. 286-2320.
- 76 HONDA - MT-125, on-off road, low mi, mint cond. \$525. Marie, Ext. 3857.
- 62 OLDS - F85, runs, 58,000 mi. 286-8060.
- 76 CHEVY PICKUP - 350 V8, std trans, heavy duty suspension & springs, low mi, excel cond, must sell. 475-9032 after 6.
- 75 TOYOTA COROLLA - Good cond. \$1500. 929-3086 after 6.
- 74 MUSTANG II - 4 cyl, 4 spd, am radio, radial tires, excel cond. \$1600. L. Bargar, Ext. 4164.
- FORD PICKUP - F100, V8, Winnebago cap, std trans, good cond. \$1300. 363-6427.

Boats & Marine Supplies

- 14' SAILBOAT - Tallstar, 5' beam, dacron main & jib. \$800. 924-3309.
- 27' ULRICHSEN - Sport fisherman, twin 109, gray marine f/b, d/f, legal head, outriggers, sleeps 4, galley, good cond. \$2950. 286-3933.
- 28' KETCH - Rigged Sharpie, 4' bowsprit, overall 28', 18 hp Johnson, lg cabin, plywood, fiberglass. 286-0932.
- 24' SAILBOAT - Twin keel Tylercrafft, sleeps 4, galley, encl head, lg Genoa incl, extras. \$3000. Ext. 3039, 744-2549.
- 16' WINNER - Fiberglass 55 hp Evinrude, trailer, compass, cb radio & many extras, excel cond. \$1890. 698-7661, 928-3067.
- 12' ALUM - Sears w/4.5 hp Sears eng, very good cond. \$200. 929-8725.
- 14' AMF ALCORT - Flying Fish, 5'8" beam w/self-draining cockpit, seats 4, trailer. \$890. 929-4133.
- 19' MAKO - 100 hp trailer, power winch, extras, mint. 722-4865.
- 16' GRADY - White, navy top, 60 hp Evinrude, manual start, good cond. \$595. 289-0265.
- 37' ULRICHSEN - '70 sedan, wood w/f/b, twin 225's, generator. Mint cond. Asking \$1990. 928-3067.

Miscellaneous

- SOFA - Old, blue one-arm. Free for the taking. Ext. 3482.
- YARD, HOUSE, GARAGE SALE - Moving, everything must go, furniture, housewares, appl, antiques, baby items, E. Main St., Yaphank.
- HUGE GARAGE SALE - 9 a.m. to 3. p.m. through Sept 5th. E Patchogue, 3 Parker La, South Country Rd to Durkee Lane south, fallow signs, quality clothing, sizes 5-7. Rose, 475-8658.
- LIVING RM SET - 5-pc, 3-pc sectional, coffee table & corner table, good cond. \$75. 475-8187.
- YARD SALE - 2 family incl Thomas organ, end table, coffee table, etc. Kristine, 281-7873.
- BICYCLE - Raleigh Sports, 3 spd, like new. \$85. Robert, 286-2265.
- YARD SALE - Sept 3 & 4, 10 to 5, crib, car seat, playpen, dryer, air cond, kit cabinets, china, clothes, much more. 9 Harbor Hills, Port Jeff. For directions call, Ext. 4599, 473-6859.
- COACH CARRIAGE - Good cond. \$20. Larry Arnold, Ext. 2024, 281-2136.
- LG YARD SALE - Sept 8-10, 10 a.m. - 5 p.m., 125 Bayport Ave. Bayport.
- WASHER/DRYER - Sears Lady Kenmore, portable washer & dryer, new \$300. 588-4170 after 5.
- TWIN BED - & Box spring, girl's colonial, new. \$35. 588-4170 after 5.
- AZALEAS & RHODOS - All sizes. Pat, 281-1364.
- MINI BIKE - Rupp scrambler 4 hp, front & rear shocks, very good cond. \$100. 929-8725.
- HUMIDIFIER - Lg capacity, like new, \$50; 2 school desks, old fashioned, \$5 each. 473-7667.
- 69 STEURY HDTP CAMPER - Sleeps 8, sink, stove, ice box, spare, good cond. \$750 firm. 924-4993.
- BEDRM SET - Modern brown, 5-pc. Ext. 3392, 475-8330.
- TENNIS RACQUETS - Davis Classic, gut strung, \$15; Spalding world open, nylon strung, \$20; light, 4 1/4 for women or teen. 941-9055 eves.
- LEAF VACUUM - Bill goat. \$100. 727-1329.
- KITCHEN SINK - Pink, dbl w/ring, no faucets. \$15. Rich, Ext. 2982.
- CHINA CLOSET - Furn w/server; Hollywood bed, chest of drawers, all reasonable. Rich, Ext. 2982.
- DINING RM SET - 3-pc, contemporary, solid wood. \$265. 744-2821.
- TAKING A LOSS - Hardly used 1975 Cox cadet camper, sleeps 4, excel cond. \$825. 727-1617.
- MOVING MUST SELL - Colonial solid pine hutch, tressle table, w/benches, king, queen chairs, Mediterranean bedrm set, 5-piece, custom made bar, all wood. Ext. 2951.
- DINING RM SET - Cherry wood, 44" table w/2 10" leaves, pads, hutch. 269-2972.
- AIR CONDITIONERS - 4000 btu, \$30; 7000 btu, \$60. 269-2972.
- DINETTE SET - Round table, chrome legs, 4 swivel chairs. 269-2972.
- DISPLAY CASE - 82" high, 48" wide, 18" deep, 6 glass shelves, 2 lights. 475-7694 after 5:30.
- 21" B & W TV - RCA console. Ext. 3494.
- BLINDS - Natural bamboo, 5' wide, 6' high, \$4; TV stand, fits up to 18" TV, \$7. 289-6490.

- SNARE DRUM - New in box, Ludwig super sensitive 6 1/2", \$150; 22" cymbal, \$70. Mike, 878-2486.
- AMP - Kustom IIB w/4-15" speakers in mint cond. \$600. Ray, 878-2486.
- BATHROOM SINK - Green oval drop in, never used. \$10. Sue Munro, Ext, 2913.
- POOL TABLE - Antique Brunswick, 7' bed, all accessories, good cond. \$200 or best offer. Sue Munro, Ext. 2913.
- CAR CARRIER - Roof top type, alum, lg capacity. \$25. 924-5192.
- STEREO RECEIVER - Kenwood 2120, needs work. \$25. 744-4013.
- 73 ACE TRAILER - 18 1/2, self-cont, sleeps 6, refrig, shower, extras, mint cond. \$2590. Pete, Ext. 3297, 586-3579.
- WALKIE TALKIE - Pace, 3 channels, 3 watts, case & ear plug. \$35. Pete, Ext. 3297, 586-3579.
- BABY ITEMS - Detecto scale, \$3; pride-a-matic, swing, \$6; car bed, \$3; walker, \$3. Carol, 586-3579.
- 12 QT MASON JARS - \$1; safety gate, \$1.50; camera tripod, \$8. Carol, 586-3579.
- BATON - 21" professional, \$3; Halloween costumes, 75¢ each; digger walking dog, \$3; doll's high chair, \$2; boy's football helmets, \$1; play school blocks, \$1. Carol, 586-3579.
- KING SIZE BED - Mattress, box springs, frame, sheets, good cond. \$40. Mike, Ext. 2018, 751-7380.
- POST HOLE DIGGER - Twist type steel, \$20; wheel barrel, contractor type, rubber tire, oak frame, no rust, clean. \$35. 289-6490.
- FIREPLACE SCREEN - 38" wide x 31 1/4" high draw type, brass frame, new cond, used 2 mos. \$30. 289-6490.
- BABY ITEMS - Pak-a-poose for back carrying, \$4; car seat, \$10; baby walker, \$2. Jean-Louis, Ext. 4762.
- PICTURE WINDOW - \$40. Frank Chorzempa, Ext. 2957.
- ICE BOX - \$10; sleeping bags, \$15 each, fan \$10; iron, \$4; big fire fighter car, \$20. Ext. 3130/3998.
- COLOR TV - & stereo radio & record player, Magnavox, all in one. \$210. Ext. 3130/3998.
- BSR TURNTABLE - 3 spd, automatic, good cond. \$35. Ext. 4723, 744-2302.
- SEARS COLOR TV - 25" console, medit style, rem cont, new pic tube, like new, too big for us. \$425. Doug, Ext. 4612.
- WINDOWS - Dbl hung, 31 x 54 w/screens, \$5 each; storms for above, \$10 each. T. Morris, 744-5096.
- TENT TRAILER - Apache Eagle, sleeps 5, excel cond. \$500. 744-0284.
- FREE TV - B & W console Philco, can be fixed or used for parts. Ext. 3908.
- DRUM SET - 4-piece, Ludwig w/hi hat cymbals. \$250. Mike, 878-2486.
- KITCHEN SET - Formica wrought iron table, 4 chairs. Ext. 3392, 475-8330.
- PUPPIES - English Springer, spaniel, black & white, liver & white, no papers, avail in Sept. 289-8212.
- FRENCH LIMOGES CHINA - Service for 12 + platters, serving bowls, sugar & creamer, royal red design. \$600. 50 yrs old. 589-2128.
- DISPLAY CASE - 48" wide, 82" high, 18" deep, 6 glass shelves, fluorescent lighted. \$100. Bruce, Ext. 2951, 475-7694.
- PHOTO EQUIP - Enlarger, printer, developing tank, trays, camera parts, Kodak publications, etc. 878-0222.
- 25" COLOR TV & STEREO - Also w/record player & radio, all in one. \$220. Ext. 3130/3998.
- 10" TABLE SAW - Powerkraft tilting arbor, 12 amp motor w/2 blades, extension arms, miter & legs. \$150. Bob, Ext. 3062, 587-3997 after 6.
- VACUUM CLEANERS - 3 mo Hoover cannister & all attachments; Premier upright. \$50 each. Ext. 3336, 475-8456.
- RIFLE - 30-40 Krag Springfield, excel cond, sporterized stock & Lyman target sights, \$80; Lifever double 12 ga. Damaxous barrels, excel. \$100. 929-4133.
- POPOP CAMPER - Wagon master hdtpt, stove, sink, ice box, sleeps 7, very good cond. \$850. 475-8504.
- 2 CHILD'S HARNESES - Auto safety, Sears, \$4 each, 50 lb rating decol scale, \$3; pride-a-matic swing, \$6; car bed, \$3. Carol, 586-3579.
- 73 ACE TRAILER - 18 1/2, self-cont, sleeps 6, refrig, shower, many extras, mint cond. \$2500. Pete, Ext. 3297, 586-3579.
- 73 CIBI MINIBIKE - Good cond 66 cc. \$100. 878-0201.
- LAYING HENS - 289-1993.
- 71 HONDA - 175 cc dirt & road, ready, mint cond. 732-4802.
- AQHA MARE - Sound champion lines, fluid mover, negative coggins. 732-4802.
- POP UP CAMPER TRAILER - Sleeps 6. \$300. 473-6386.
- DINING RM SET - Pedestal table, 1 leaf, 4 chairs, china closet, walnut, excel cond. \$200. 581-5733.
- 12" B&W TV - Portable. Yutaka Ishii, Ext. 3627, 345-3018.
- ACCORDIAN - Woman's Hohner. Sharon, Ext. 3312.
- ELEC ORGAN - Thomas, great for beginner. \$150. Kristine, 281-7873.
- CAR RADIO - Audiobox, new am pushbutton, fits any late model GM car. \$20. Ext. 4532, 581-9199.
- AIR COND - Philco, 5 yrs old, 8700 btu, works good. \$100. Ext. 4532, 581-9199.

Classified Advertisements

RADIO - Grundig Majestic, hi fi, oldie but goodie, plays. \$25. Ext. 4532, 581-9199.

BOY'S HUTCH - \$30. 744-9498 after 6.

2 WHITE DOVES - W/cage. \$25. Cathy, Ext. 2456, 732-6262 eves.

COAT - Girl's winter, size 14, rust w/hood & "fur" trim, new. \$20. Fred, Ext. 4095.

DRAFTING TABLE - 5' professional, adj board, cushioned stool, 4 drawers & elec outlet, excel cond. \$150. Ext. 2206, 751-0833.

DRAFTING BD LIGHT - Clamp on, 2 tube fluorescent, \$12; elec eraser, \$9; elec pencil sharpener, \$9. 751-0823 or Ext. 2206.

2 ELEC HOT WATER HEATERS - 286-8758 after 5.

DISHWASHER - & Westinghouse elec stove. \$60. 286-8758 after 5.

LADDER - 25' alum extension. 286-8758.

CAR RADIO - Am for Chevy. 286-8758 after 5.

DIVING BOARD - 12'. 286-8758 after 5.

FREEZER - Westinghouse upright. \$200. Ext. 3790, 751-8158.

SHOTGUN - Antique dbl barrel, muzzle loading, Civil War era, excel cond. \$250. 929-8725.

WALNUT DINING CHAIRS - 4 for \$40, good cond. Ext. 4240, 286-0295.

FIRESEIDE CHAIRS - Antique olive green, excel cond. \$65 firm. 265-1072.

WEDDING RING - 14K gold, 3/8" wide, size 6, never used. \$35. Ext. 3514.

WASHER/DRYER - Single unit, good cond. \$75. Stu Rideout, Ext. 4108.

TRAVEL ROOF BOX - W/canvas snap cover to fit on roof rack, wood 4 x 8. \$25. Ron, Ext. 4082.

DROPLEAF TABLE - & matching coffee table, \$25; car bed, \$3; habitrail, \$6. Ron, Ext. 4082.

PETERSON CAR SEAT - Highly rated by Consumer Report, perfect cond. Asking \$20. Ext. 4599, 473-6859 eves.

XMAS TREE - \$3; steak & brew set, never used, \$7; baby swing, \$10; GAF weather board siding, new, red, \$7. 281-6130 eves.

HAIR BLOWER - Selectric hair styling brush & comb, both for \$7. Judo uniform for beginner, new. 281-6130 eves.

HOME STEREO - Am/fm 8-track Columbia. \$25. Hank, Ext. 3935.

WINDOWS - Dlb hung, 31 x 54, w/screens, \$5 each; storms for above, \$10. T. Morris, 744-5096.

ELEC RANGE - Hotpoint, 40" wide, white. \$20. T. Morris, 744-5096.

EXECUTIVE DESK - 5' x 34" & swivel chair. \$100. 589-1781.

ACCORDIAN - Mussi corvette, mint cond, 120 low, high bass comes w/felt lined case. \$250. 924-3476.

KITCHEN CABINETS - Complete set, sink, counter top, delta faucet. \$200. 589-1781.

DARKROOM - Complete, \$100; trumpet, king, excel cond. \$110; lawn mower, 20", Sears, excel cond, \$90. John, 929-4450.

BABY CAR SEAT - \$10; baby back carrying, \$4; baby walker, \$2. Jean Louis, Ext. 4762.

ANNALS OF AMERICA - 19 vols. Best offer. Ext. 4881.

FREE PUPPIES - Beautiful, free to good home. Ext. 4881.

10 SPD BIKES - Vista 27", men's; 27" Panasonic deluxe, women's. \$78 each. Ext. 4881.

CONSOLE TV - Sears 25" medit style, remote control, new pict tube, mint cond, too big for our living rm. \$425. Doug, Ext. 4612.

TRUMPET & CASE - \$30. 924-6348.

Real Estate

Real Estate advertised for sale or rent is available without regard for the race, color, creed or national origin of the applicant.

For Sale

MIDDLE ISLAND - 3 bedrm, garage, fp, bsmt. \$30,000. P. Fallon, Ext. 3043, 878-2266.

PATCHOGUE VILLAGE - 3 bedrm ranch, exp attic, fin bsmt, all appl. \$34,000. Ext. 2951, 475-7694.

SHOREHAM - Custom blt colonial, 8 rms, 2 1/2 baths, laundry, full acre. \$58,500. 744-2821.

MASTIC - Cape, 3 bedrm, 100 x 100 corner, wood burning fp, low 20's. 399-0292 eves.

SHIRLEY - 3 bedrm ranch, full bsmt, ranch, 100 x 125, perfect. \$27,000. 281-5977.

HUNTINGTON - Greenlawn, raised ranch on wooded acre, 4 bedrms, 2 1/2 baths, den, solarium, fp, greenhse, many extras. \$64,500. AN1-7950.

3 BEDRM HOUSE - Porch, wood fl, lg yd, nr schools, quiet st, under \$40,000. Vis, Ext. 3512/3, 878-4889.

BLUE POINT - 1 acre in cul de sac. Ext. 3688.

MEDFORD - 1 bedrm, w/w carp, appl, recreational facilities. \$29,500. 732-5252, 286-0838.

WADING RIVER - 3 bedrm mod ranch, 3 blks to Sound, full bsmt, nr Wildwood. Ext. 2506, JU8-8866.

CLEARWATER BEACH - 100 x 150 bld plot nr Gardiner's Bay. Asking \$13,000. Ext. 3469, 281-4371.

MOBILE HOME - 12' x 50', 2 bedrm, 1 1/2 bath, skirted, appl. \$85 rent, must sell. \$5000. Ext. 4597, 399-3588.

LIVINGSTON MANOR - 20 min west of Monticello, 15 acres w/mobile home & cabin. 821-0080 after 6.

S SHIRLEY - 3 bedrm, near water, storage bsmts, storms, landscaped. \$29,500. 281-5328.

For Rent

WADING RIVER - Lg 3 rm bsmt apt, furn, ac, on beach. \$250/mo incl util, lease. 929-8443.

WADING RIVER - Sm 3 bedrm hse, furn, wooded, Oct-June. \$250/mo. 929-6324.

LG FURN RM - Upstairs of condo, priv bath, possible kitchen priv, 6 min to BNL. \$150/mo. 744-3235, 924-5294.

VT CHALET - Furn, fp, hike, swim, canoe, fish, summer theater, music, antiques. 757-5599 for rates.

4 BEDRM CAPE - Furn, Sept-June, \$350/mo + util. 281-4013.

MILLER PLACE - Sm 2 rm furn studio in old barn, garden & water view. \$275/mo incl util. 473-3447.

BELLPORT VILLAGE - 4 bedrm cape, lg rms, country kitchen, in grd pool. \$49,500. 286-0795.

BROOKHAVEN - 2 bedrm house, lg kitchen, den. \$275/mo. Ext. 4088.

SMALL TWO-BEDROOM HOUSE - Direct electric heat, water view, S shore, suitable for 1 or 2 adults. Rent \$260/mo + electric bill. Ext. 3482.

Wanted

BOWLERS - Male and female to bowl in Wed. night mixed league, Port Jeff. Carol, Ext. 3483.

HOUSEMATE - W/single parent, lovely bedrm & TV. \$175 incl util. 928-5610 after 6 p.m.

SODA/BEER CANS - For solar collector, uncrushed please! Bring to Rm 10, Bldg. 475 or call Ext. 2063.

BABYSITTER - For children of substitute teacher. 744-3238.

GIRLS - 8 to 9 yrs old to form 4H group, Shoreham area. 744-6794.

DATSUN-240Z - Toyota Celica 72 or 73, gd cond. Dan, Ext. 3289, 4483.

ANYONE - Interested in sharing a house beginning early Sept. Please call Danny, Ext. 4483, 3289.

BOY'S - 20" bike, must be in gd cond & reasonable. Lois, 289-8167 or Bob, Ext. 4317.

BABYSITTER - My home, Tues-Fri, 4-6 p.m. South Shirley. 281-0268.

HOUSEMATES - For a comfortably furnished 6 bedrm house overlooking the water in Rocky Point. Jack, Ext. 2253.

HOME - For a lovable gentle 1 yr old Collie-Shepherd male dog. Has rabies vac and distemper shots. 475-5240.

MATCHBOOK - Covers wanted by young collector. Fred, Ext. 4095.

HOUSEMATES 4 bedrm house, big yard in Lake Ronkonkoma, 12 miles from Lab, 6 from Stony Brook. Matt, Ext. Ext. 2063, 698-9059.

PLAYPEN - Must be in good cond. Ext. 3032, 3373, 3379.

HORSE TRAILER - Preferably 2 stall. Martin, Ext. 2547, 281-5328.

BOY'S BIKE - 24" wheels, 3 spd, urgent to replace stolen machine. David, Ext. 3501 or 286-8097.

REFRIG - 10-15 cu ft; washer/dryer electric. 473-8970.

Car Pools

LIE EXIT 41 - Seek member to join existing car pool, meet Exit 41 LIE (Jericho), meeting place flexible. Ben or Bob S, Ext. 2514.

Services

BABYSITTING - My home, pleasant surroundings, reasonable rates, playmates. Claire, 289-0633.

ASPHALT - Paving & sealing. Bob, 475-4382.

CHAIR CANING - Pressed or woven by experienced expert craftsperson. 727-7796.

HANDYMAN - All jobs after 5 p.m. 286-8758.

EXPERT PAINTING - Interior and exterior, free estimates, reasonable rates, references available. 473-5079 or 751-0330.

PAINTING - Int/ext, free est. 878-2357.

CAR - Waxing & odd jobs. Steve, Ext. 2313.

AUTO - Refinishing, complete bodywork, painting, stripping. Bob, Ext. 2546 or 744-4047.

MOVING - Will move your entire home (Nassau, Suffolk, NYC, Brooklyn, Bronx, etc.) Ext. 3217 or 732-3145 after 5:30 p.m.

Classified Ad Policy

Deadline is 12 noon Monday for publication Friday of the same week.

- The Brookhaven Bulletin's classified section may be used only by active and retired Laboratory employees.
- All items for sale or rent must be the advertiser's property.
- Ads for material acquired for resale in association with a full or part-time business cannot be accepted.
- Firearms offered for sale or trade may not be brought on site.

- Ads not carried because of space restrictions will be held for publication in the next issue.
- Ads are run only once and must be resubmitted if they are to be repeated.
- Ads should be restricted to 20 words or less and typed or printed on the form provided, and must bear the employees signature.

- For Sale: Auto & Auto Supplies
 For Sale: Boats & Marine Supplies
 For Sale: Miscellaneous

- Wanted
 Carpools
 Lost & Found
 Services

Check the heading applying to your ad. Print or type your ad in 20 words or less.

Ads concerning property for sale or rent cannot be accepted on this form. Special Real Estate Ad forms are available at the Office of the Brookhaven Bulletin, Room 1111, 40 Brookhaven Avenue.

(Name & Phone No. To Call)

Employee's Signature Life No. Ext.

Send to: Brookhaven Bulletin, Building 460, 40 Brookhaven Avenue (Ext. 2345).