

Sun Day Is Sunday

Don't forget the BNL open house!

It's *this* Sunday, April 30, from 9:00 a.m. to 4:30 p.m.

There'll be lots of exhibits, displays and demonstrations on solar energy, alternative fuels and energy conservation.

Bring your family and friends - and help celebrate the power of the sun's energy!

Remember, it's up to *all* of us to "Decide for Tomorrow, Today."

Davis Receives Academy Award

Raymond Davis, Jr. received the Cyrus B. Comstock Prize at a special awards ceremony during the 115th annual meeting of the National Academy of Sciences in Washington on April 24. Davis, a senior chemist in the Chemistry Department, was cited "for his determination of the intensity of neutrino radiation reaching the earth."

The Comstock Prize carries with it a \$5,000 honorarium and is presented not more often than once every five years. It is given to a resident of North America, who, not less than one year or more than six years before the awarding of the prize, shall have made the most important discovery or investigation in electricity, or magnetism, or radiant energy.

Davis was among nine individuals who were honored by the Academy this year for significant contributions in such diverse fields as public health, molecular biology, the earth sciences and photochemistry.

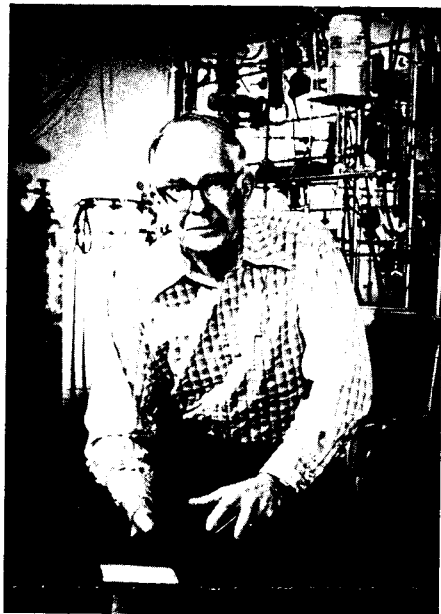
Ray Davis, who received his Ph.D. in physical chemistry from Yale University in 1942, has been a member of the scientific staff of the Chemistry Department since 1948. He has devoted most of his energies over the past 15 years to his widely known radiochemical experiment for the detection and measurement of neutrinos from the interior of the sun. The experiment uses 4×10^5 liters of perchloroethylene in a deep mine in South Dakota as the neutrino detector, and involves the isolation and measurement of a few atoms of radioactive argon-37 formed by neutrino capture in chlorine-37. Extraordinarily sensitive and sophisticated techniques had to be developed to accomplish this task.

According to many prominent scientists, the startling result of Davis' experiment, a measured neutrino flux about one third of that predicted by the accepted theories of stellar structure and stellar evolution, has stimulated an enormous amount of research in astrophysics and nuclear physics. Scientists in these fields have been forced to re-think some basic assumptions underlying the whole theoretical framework of stellar evolution. Rarely has a single chemical experiment had such wide impact.

Davis has made other important contributions, among them the experimental demonstration that antineutrinos and neutrinos are not identical. He has also pioneered in using cosmic-ray interactions in meteorites as a probe of spatial and temporal variations of cosmic-ray intensity and has done imaginative work in geochemistry and lunar science. The technical base for all these developments has been "low-level counting," the measurement of extremely small quantities of radioactivity. Davis has for many years been a world leader in this area, and his techniques are in use in many laboratories.

Born in Washington, D.C., Davis received his B.S. and M.S. degrees in chemistry from the University of Maryland. He was an officer in the U.S. Air Force from 1942-45, and then spent two years on the staff of the Monsanto Chemical Co. in Dayton, Ohio, before coming to Brookhaven.

He was awarded the Pregl Prize of the New York Academy of Science in 1954.



Raymond Davis

Davis is Adjunct Professor of Astronomy at the University of Pennsylvania and is a member of the Radiochemistry Subcommittee, National Research Council's Committee on Nuclear Science. From 1971-73 he was a member of NASA's Lunar Sample Review Board, and was one of three Brookhaven chemists involved in the analysis of lunar dust and rocks collected by the crew of Apollo XI on the historic first flight to the moon.

Davis and his wife, Anna, have five children and are residents of Blue Point.

Cooperation On The High Seas

In exchange for commercial fishing time within the 200 mile limit, the U.S.S.R. is giving the National Marine Fisheries Service (NMFS) equivalent ship time on their vessels for research purposes. In turn, the NMFS has given some of this valuable time to Brookhaven for its continuing study of the waters affecting the New York Bight.

This cooperative exchange is important to BNL oceanographers as ship time is expensive. To charter an American research ship costs about \$6,000 per day and their budget allocation for this purpose is limited. The free time will allow the important DOE program in the Bight to progress that much faster.

Tom Hopkins and Jim Lofstrand of DEE's Oceanographic Sciences Division have returned from two weeks aboard the Soviet research vessel ARGUS, a converted stern trawling fishing ship. Tomorrow, Paul Falkowski, Andrew Stoddard, Karl von Bock and Rowland Hautsch will embark on a week's cruise on the Soviet ship.

According to Tom Hopkins, life aboard the vessel was Spartan compared to American standards, but the quality of science was high. The USSR scientists had one set of procedures and the Americans another, but once they sorted that out, the two groups worked well together. The American oceanographers were impressed by the wealth of data the Russians had on the

Vineyard To Continue As Director

Gerald F. Tape, President of Associated Universities, Inc., announced this week that the Board of Trustees of AUI has asked Dr. George Vineyard to continue as Laboratory Director, and that he has agreed to do so.

The announcement followed a periodic review of the Directorship by the Board of Trustees. Periodic reviews are required by AUI policy, and a similar future review and evaluation will be held no later than 1984, said Dr. Tape.

Dr. Vineyard has been Director of Brookhaven National Laboratory since 1973.

"Dr. Vineyard has successfully led the Laboratory through a difficult period, one which has seen severe inflationary impacts, changing programmatic priorities and changes in government sponsors," commented Dr. Tape in his announcement. "Under his leadership the upgrading of the HFBR and the addition of two new facilities, the National Synchrotron Light Source and the Proton-Proton Colliding Beam Facility - ISABELLE, will strengthen the Brookhaven role as a national research center providing forefront research opportunities for all qualified scientists.

"The increasing utilization of Brookhaven's multidisciplinary approaches for which he has strived will benefit programs in both basic and applied sciences," Dr. Tape said. "Additional recognition for BNL is being gained through the application of staff expertise and capability to more immediate energy-related problems. Throughout the Laboratory the emphasis on selectivity and quality has been continued.

"We wish to express our thanks to Dr. Vineyard for a job very well done," he concluded.

Born in St. Joseph, Missouri in 1920, Dr. Vineyard received both his B.S. (in 1941) and his Ph.D. (in 1943) from M.I.T. He then spent three years at the M.I.T. Radiation Laboratory working on microwave electronics and radar. In 1946 he joined the faculty of the University of Missouri, Columbia, becoming a Professor of Physics in 1952.

In 1954, Dr. Vineyard moved to Brookhaven, where he performed research in several areas, particularly the use of neutrons to determine structure of solids and liquids; the kinetics of order-disorder transitions; the theory of diffusion; magnetism; and



George Vineyard

radiation damage in solids. He became Chairman of the Physics Department in 1961.

He was appointed Associate Director of the Laboratory in 1966 and Deputy Director in 1967. He held that post until January 1973, when he became Laboratory Director.

Dr. Vineyard is a Fellow, Councillor-at-Large, and member of the Executive Committee of the Council of the American Physical Society. He is a member of Sigma Xi and the American Association for the Advancement of Science.

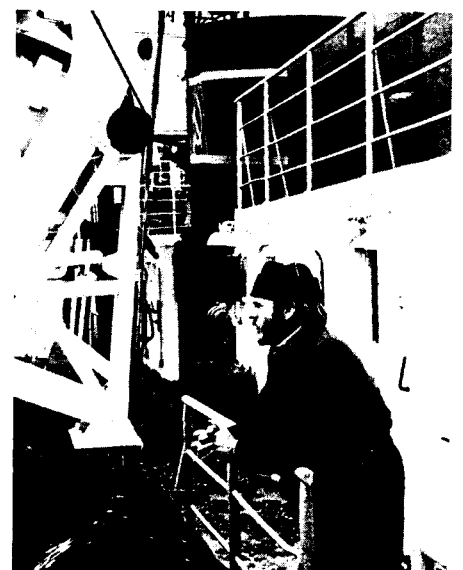
He has served on the editorial boards of six physics journals and as a member of numerous committees of such organizations as the National Science Foundation, National Research Council, National Academy of Sciences and the American Physical Society.

In 1975, he received the Stony Brook Foundation Award for Distinguished Contributions to Higher Education, and in 1977 was awarded an Sc.D. Honoris Causi by Long Island University. He has been Adjunct Professor of Physics at Queens College of the City University of New York since 1967.

Dr. Vineyard and his wife Phyllis are residents of Bellport, N.Y.



Tom Hopkins (left) and a Russian seaman.



Jim Lofstrand aboard the ARGUS
—photos by Hopkins

Continental shelf, and they are interested in pursuing the possibility of an information exchange. On the social side, the Americans sampled Russian teas and blini, and introduced their Soviet counterparts to peanut butter and exotic tobaccos.

Both groups of oceanographers are following the same cruise track, but at different times. Between April and May is the critical time to observe spring bloom phenomena and their basic goal is to determine how the New York Bight is influenced by northern waters. Cruises are also being made by BNL oceanographers on the U.S. research vessels, ATLANTIS II and DEL-AWARE II.

On these cruises they are surveying portions of the Gulf of Maine, Georges Bank and the New York Shelf. While aboard the ARGUS, the oceanographers monitor changes in distribution and abundance of phytoplankton and zooplankton, record hydrographic measurements, and collect basic primary productivity data in the shelf waters from the Northeast Channel of Georges Bank to Barnegat Inlet, New Jersey. The nutrients will be analyzed when they return to Brookhaven.

The researchers already know the characteristics of these bodies of water, but not how they mix at this time of year, or the biological consequences. One area that may be illuminated by the results of their studies

(continued on page 2)

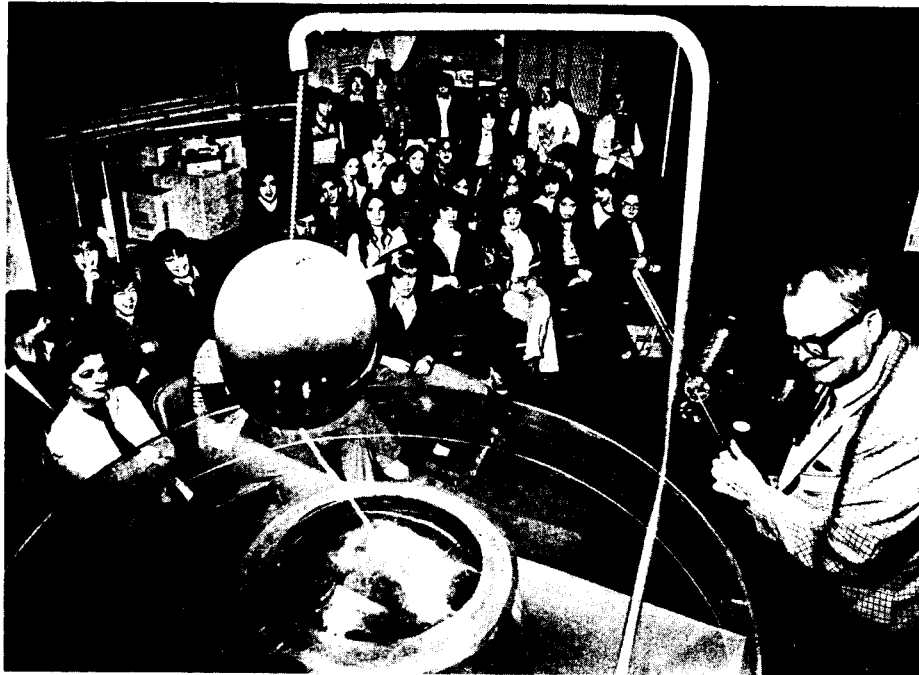
4-1159-78

Speakers Bureau

April

- April 6 - R.C. Anderson (DO), Institute of Environmental Sciences, Research at BNL
- April 12 - R.C. Anderson (DO), Dowling College, Energy: In Your Home, In Your Bus, In Your Future
- April 18 - Glenn Price (DO), SUNY Careers Day, Research at BNL
- April 21 - R.C. Anderson (DO), Southampton College, Energy & Ecology
- April 25 - Glenn Price (DO), Kiwanis Club of Riverhead, Spin-off from Basic Research
- April 26 - Jean Burt (DNE), Half Hollow Hills School District Career Day, Computers
- April 26 - John Andrews (Accel.), Bay Shore High School, Solar Energy
- April 26 - Robert Glasmann (Accel.), Masonic Temple, Patchogue, Energy Conservation

Tour Season Under Way



At the Exhibit Center, high school students viewed a spectacular representation of the Tandem Van de Graaff, and Harvey Wegner (right) explained how the accelerator worked. This was a recent special feature of the tours for students which began this year on April 7. The Exhibit Center is continuously evolving and bright, new displays have already been added to last year's collection. Tours for high school students will continue on Fridays through April, May, October and November. Weekend tours for the general public will begin on June 3 and carry on through September.

Library Service

The Laboratory's Research Library is for the use of all employees and guests. Students and others with no formal association with the Laboratory, who are in search of technical information, may use the collection if they check first with John Binnington, head of the Technical Information Division.

On-site residents who wish to take out books from a full service library, may obtain a card from the Middle Island Public Library, located in the Anchor Savings Bank Shopping Center, Middle Country Road (Rte. 25), Middle Island. The card will be issued for the duration of the resident's stay on-site. Library hours are 10 a.m. to 5 p.m. on Tuesdays, Wednesdays and Saturdays; 1 p.m. to 9 p.m. on Mondays, Thursdays and Fridays.

Off-site residents who live in an area not served by a public library should apply to the nearest library for a non-resident card.

George Cox Dies

George C. Cox, former Head of the Illustration Section of the Photography and Graphic Arts Division, died at Brookhaven Memorial Hospital on Monday, April 24.

George came to the Laboratory in 1947 and his work was immediately recognized as that of a skilled artist. His creative imagination combined with an adherence to high standards contributed significantly to the excellent appearance of Brookhaven scientific reports.

His spirit of cooperation and warm personality resulted in lifelong associations with employees in all areas of the Laboratory. As a result, his advice was often sought and always freely given on graphics and illustrations beyond the limits of his Laboratory work. For many years he was active in the BERA Theater Group particularly as a set designer and actor.

Mr. Cox is survived by his wife Mary who is employed in the Medical Department and by his two sons, Lawrence and Anthony. A memorial service will be held at 4:30 p.m., May 7 at Christ Church, Bellport, New York.

—John Binnington



George Cox's winning design for a "Atoms For Peace" postage stamp. In 1955 he responded to President Eisenhower's request for a design to commemorate the "Atoms For Peace" program. His rendering was selected as the best of those submitted by illustrators throughout the nation.

Bicycling

Five riders cycled from BNL to Jamesport to meet the Riverhead Historical Society tour last Sunday. The five were Betty Semplicino, Mable Evans, Pat and Dick Schoppas and Gerry Morgan. The weather was lovely, and dinner at a popular Jamesport restaurant capped a fine ride.

This Sunday is the 5 Boro Tour. It is too late to sign up for it, but you can probably enjoy it vicariously, as it will undoubtedly be on news telecasts.

The TOES trip on May 20, 21 is oversubscribed and no more reservations are being accepted. Riders are cautioned that space in the sag wagon is very limited, and that packages to be carried in it must be small. Better yet, carry your luggage with you on the bike.

Following TOES the next biking event is the Spring Race on June 4. A two-lap event (twice around the Lab) will be offered to advanced riders, but the single lap, 16.5 mile race is open to all. Get in shape by cycling for an hour, several times a week, then join in the fun. Even if you have never raced, try it just to see how well you can do. A time less than an hour is quite respectable for a novice. The registration fee is \$1.00.

Oceanographers (Cont'd)

is that of massive fishkills. In 1976 there was a \$60 million shell fish loss in a fish-kill off the New Jersey coast, apparently due to a dinoflagellate bloom known as the red tide. Oceanographers think it may have come from the Gulf of Maine. As water generally flows southwest from the Gulf of Maine and the Georges Bank to the New York Bight, the bloom may be transported to this area in the spring. If this is so, oceanographers could get a lead on a fish-kill and forecast it in time for the waters to be fished out.

Fishkills have been reported in the New York Bight since about 1890, long before the advent of nuclear power plants and oil spills. A goal of the researchers is to understand the natural variability in the system first, and then determine how the placing of a nuclear power plant, for example, would change that system, if at all.

This is the first time the oceanographers have explored the waters this far north. The first few years were spent in investigations from Montauk Point to Cape Hatteras. The next step will be to study the relationships between the coastal ecosystems of the north and south parts of the Northeast United States.

Cafeteria Menu Week Ending May 5, 1978

Monday, May 1	
Corn chowder	(cup) .30 (bowl) .40
Beef chop suey on rice	1.20
Scrambled eggs, sausages and fr. fr.	1.10
Hot Deli - Pastrami	(on bread) 1.15 (on roll) 1.25
Tuesday, May 2	
Beef noodle soup	(cup) .30 (bowl) .40
Knockwurst and sauerkraut	1.10
Roast chicken w/stuffing and 1 veg.	1.20
Hot Deli - Veal pattie & peppers hero	1.25
Wednesday, May 3	
Cream of potato soup	(cup) .30 (bowl) .40
Braised meatballs à la mode w/buttered noodles	1.20
Special	
Davy Jones Fish Fry w/cup of soup, plain jello small soda, coffee or tea	\$1.87 plus tax
Hot Deli - Corned beef	(on bread) 1.25 (on roll) 1.35
Thursday, May 4	
Chicken vegetable soup	(cup) .30 (bowl) .40
Cheese ravioli w/1 veg.	1.10
Sauerbraten and potato pancake	1.40
Hot Deli - Italian sausage and peppers hero	1.25
Friday, May 5	
Fish chowder	(cup) .40 (bowl) .50
Spaghetti w/clam sauce	1.10
Breaded pork chop and 1 veg.	1.40
Hot Deli - Smoked tongue	(on bread) 1.15 (on roll) 1.25

Stony Brook Events

Concert: Carly Simon at 9 p.m., April 28, University Gym. For info call 246-7085.

Recital: Oboist Dorian Schwartz, 8:30 p.m., April 28, Lecture Center 105.

Theatre: "Godspell" through April 30, at 8 p.m., Calderone Theatre, S. Campus Bldg. B. Students free, 50¢ general public.

Art Exhibit: At Informal Studies Community Gallery through May 13, Tuesday-Saturday, 12:15 - 5:15 p.m.

Concert: Chuck Mangione Quartet at 9 p.m., April 29, University Gym. For info call 246-7085.

Recital: Cellist Vicki Parr, 8:30 p.m., April 29, Lecture Center 105.

Concert: Orpheus Chamber Ensemble, Stony Brook Union Auditorium, May 3 at 8 p.m. For info and tickets call 246-7756.

Theatre: "Rosencrantz and Guildenstern are Dead," Theatre II, Fine Arts Center at 8 p.m., May 3 through May 6. For reservations and ticket prices call 246-5678.

Poetry Reading: American poet, Louis Glück will read from her own works at 8 p.m., on May 4, in Room 102 of the Lecture Center.

Pool Schedule

The spring/summer season of the swimming pool will begin on Monday, May 1 and extend through August 31, 1978. Season tickets will be sold at the pool during open hours starting on Monday, May 1.

Effective immediately, and until further notice, the pool schedule is as follows:

Monday through Friday	
11:00 a.m. - 1:30 p.m.	— employees only
5:00 p.m. - 9:30 p.m.	— employees/family members/guests
Saturday and Sunday	
1:00 p.m. - 6:00 p.m.	— employees/family members/guests
Admission Prices:	
Season tickets	\$15.00 Individual \$25.00 Family
Daily admissions	\$1.00 Employee/ family member \$1.50 Guest

One guest per employee may be admitted to the pool. An employee may have more than one, but not more than five guests at any one time by making advance arrangements at the Recreation Office in Personnel. Employees will be responsible for the conduct of their guests or children, or both.

Arthur Charles Clarke (1917-)

When a distinguished but elderly scientist states that something is possible, he is almost certainly right. When he states that something is impossible, he is very probably wrong. (Clarke's First Law.)

Retiring 3-1158-78



Jay C. Rowland, Jr., a Senior Staff Assistant in Plant Engineering, will retire today after more than 30 years at the Laboratory. He came to Brookhaven on June 12, 1947. Now he and his wife plan to travel extensively throughout the United States to visit friends and relatives. —photo by Rosen

It's . . . Cricket

The 1978 cricket season will open on Sunday, April 30, with an informal game at 1 p.m. at the recreation park.

The first game of the season will be dedicated to Ed Beardsworth, one of the club's founding members, who is leaving the Laboratory shortly to take a position at the Electric Power Research Institute in Palo Alto, California. Beardsworth is not only an active cricketer, but worked hard to make the Cricket Balls and other social activities of the club outstanding successes.

Everyone is welcome to come and join in the game, or just enjoy the leisurely spirit of cricket on a Sunday afternoon.

Mountain Club

On May 13-14, the Mountain Club will be hiking up Slide Mountain and camping overnight. Slide Mountain is a four-hour drive from the Lab and is the highest peak in the Catskills. Two trails are available to the top; one a three-miler and the second a more vigorous six miles with some vertical boulder scrambling. For further information, trail guide, maps or help in forming a car pool, call John Nagy at Ext. 2003 or 924-0270.

There will be a canoe trip on the Nesconset River on May 6. For reservations, call Ray Tessmer on Ext. 2002.

Spring Ahead

Daylight Saving Time goes into effect at 2 a.m. on Sunday, April 30.

BROOKHAVEN BULLETIN

Published weekly for the employees of BROOKHAVEN NATIONAL LABORATORY

BERNICE PETERSEN, Editor
DOUG HUMPHREY, Photo-Journalist

40 Brookhaven Ave., Upton, N.Y. 11973
Telephone (516) 345-2345

CARL R. THIEN, Public Relations Officer

Service Awards

4-672-78



Three long-time members of the Instrumentation Division recently received service awards. From left to right are Joe Mead (20 years), Jack Craig (30 years) and Dick Richardson (20 years). Associate Division Head, Gerd Dimmler (right) presented the awards.

Classified Advertisements

Placement Notices

The Laboratory's placement policy is to select the best-qualified candidate for an available position, with consideration given to candidates in the following order of priority: (1) present employees within the department, with preference to those within the immediate work group; (2) present employees within the Laboratory as a whole; and (3) outside applicants.

Each week, the Personnel Office lists new personnel placement requisitions. The purpose of these listings is, first, to provide open placement information on all nonscientific staff positions; second, to give employees an opportunity to request consideration for themselves through Personnel; and, finally, for general recruiting purposes. Because of the priority preference policy stated above, each listing does not necessarily represent an opportunity for all candidates. As a guide to readers, the listings are grouped according to the anticipated area of recruitment, as indicated below. Except when operational needs require otherwise, positions will remain open for one week following publication date.

For further information regarding a placement listing, contact the Personnel Placement Supervisor, Ext. 2882.

LABORATORY RECRUITMENT: Opportunity for present Laboratory employees.

613. STAFF ASSISTANT - Requires bachelor's degree or its equivalent and broad general administrative background. Must have strong writing and analytical abilities. Director's Office.

614. OFFICE SERVICES ASSISTANT - Requires excellent typing skills, including technical typing. Department of Energy & Environment.

615. MESSENGER - Temporary position (May 30 - September 8). Staff Services Division.

OPEN RECRUITMENT: Opportunity for present Laboratory employees and outside applicants.

414. ELECTRICAL ENGINEER - BSEE or equivalent, with experience in high power rf and/or high voltage engineering. Initial task will be to design, specify, procure and test a 50 MHz, 400 KW c.w. radiofrequency system for the NSLS project. Knowledge of servo systems and analogue circuitry is also desirable. Physics Department.

616. COMPUTER ASSOCIATE - Requires bachelor's degree or equivalent. Experience with PDP-11 assembly language and FORTRAN required. Instrumentation Division.

617. TECHNICIAN - Requires broad experience in industrial-type preventative and breakdown mechanical maintenance. Reactor Division.

618. EXPERIMENTAL MACHINIST - Central Shops Division.

619. ELECTRICIAN A - Plant Engineering Division.

620. OFFICE SERVICES ASSISTANT - Requires good typing skills and knowledge of general office procedures. Part-time position. Department of Energy & Environment.

Autos & Auto Supplies

TIRES - (2) E78-14 Goodyear snow tires w/rims, new, used 2 weeks. Rims fit Cougar. \$50. 499-4369 after 6.

76 DODGE - Van, 6 cyl, auto, am/fm, sun roof, captain chairs, new tires, many extras. \$4200. Ext. 3084 mornings only.

MOBILE CAR - Washing and engine cleaning unit, unit in 1974 Ford econoline "300," good money maker. 588-1958 after 6.

70 FORD WAGON - Ps/pb, 55,000 mi. \$600. Don, Ext. 2026 or 286-1396 eves.

76 HONDA - CB200T, new (20 mi), \$750; 1972 Honda 450, excel cond, \$700. Bob, Ext. 3313 or 981-3965.

70 PONTIAC - Catalina, 4 dr, a/c, p/s, p/b, new engine. \$200. Tom, Ext. 4227.

69 VOLKSWAGON - W/1971 engine, new clutch, 5 good tires, brakes recently done, mechanically good cond. Bill, Ext. 4173 or 929-3029.

VW REBUILT MOTOR - Parts, etc priced for quick sale. Audrey, Ext. 4070 or 475-7272.

65 VOLKSWAGEN - Running cond, as is. \$100. 924-3544.

72 PONTIAC - Catalina, 4 dr, p/s, p/b, a/c, clean, call early, morning or eves. \$750. 878-1204.

72 PINTO - Hatchback, 72,000 mi, new brakes, clutch, trans. \$1000. Jeff, Ext. 2519 or 585-5864 eves.

MOOG - Sonic six synthesizer, needs tuning banks, \$250; 23 channel am/USB/LSB mobil radio w/turner power mike, \$150. Jeff, Ext. 2519.

66 CHEV VAN - Good cond, paneled and carpeted. Larry Arnold, Ext. 4764 or 281-2136.

76 SUZUKI - 550 cc, 4800 mi, crash bars, large shield, vinyl bags, like new. \$1300 firm. Ext. 3260.

71 PONTIAC - Lemans, sport, auto, V8, p/s, p/b, a/c, am/fm. \$900. Frank, Ext. 2011.

72 PLYMOUTH - Fury III, 2 dr, auto, a/c, p/s, p/b, am radio. Ext. 4169 or 981-5696.

77 KTM - 175 cc, fully set up, fox air shocks, many extras, must sell. Ext. 4581.

69 FORD - Galaxie w/351 V8, fully equipped, runs well but could use body work. Best offer. Ext. 3432 or 473-1620.

73 FORD - E200 Van, fully customized interior, am/fm/8 track/CB, new tires. \$2900. 286-2148.

77 HONDA ACCORD - Silver w/black interior, extremely clean, Craig power plays. 924-0374 after 5.

73 FIAT - 128 Station Wagon, roof rack, radial tires w/2 snow tires on rims, r & h, over 30 mpg, excel running cond. 744-1055.

Award To BNL Student

Kevin St. John, a student at the University of Lowell, recently received an award from the Northeast Regional Student Conference of the American Nuclear Society for work done at Brookhaven last summer.

St. John was awarded first prize in the Safety and Engineering category for his paper "An Iterative Procedure to Determine Coolant Flow Fractions for the Super Systems Code." He was a summer student last year with the Fast Reactor Safety Division (now called the Engineering and Advanced Reactor Safety Division) and will spend this summer with the same group in DNE.

Basketball

The Dribbles posted a 95 - 88 victory over the Unicorns in the championship game of the BERA Basketball Tournament. The Unicorns overcame a 15 point deficit to go ahead in the fourth quarter, only to see the Dribbles rally in the last five minutes for the victory. In a game in which both teams emphasized defense, the Unicorns held the Dribbles' high-scoring trio well below their seasonal averages. John Mosley and Dan Costa alternated in playing a tight belly-button defense against the league's top scorer, Jerry Hobson, holding him to 37 points, far below his 60 points per game pace of the last two weeks. Jeff Gaffney found the range for 23 points and Dennis Nordstrom notched 17 points. Lew Snead (10), Bernie Jasper (6) and Ron Webster (2) rounded out the Dribbles' scoring, while coach Bob "The Shoe" Schuman hit the boards for the Dribbles. The Unicorns' scoring was topped by Gary Mosley (24) and Rich Sapienza (22) with quarter-back Bob Rowley and Leroy James tossing in 12 points each. Dan Costa added 8 points, John Mosley tossed in 6 points, and Gordon Smith hit for 4 points while Brant Johnson concentrated on the defensive boards.

Volleyball

Mixed League

On April 24, the snow day games of February 6 were played to determine the final standings of the third quarter.

Division A

The Nads miffed the LeMufs: 15-10, 15-7, 15-12. Lookin' Good beat the No Names: 15-13, 8-15, 15-8. The Assorted DO-E-Nuts forfeited three to the Popovers.

Final Standings - Third Quarter

Lookin' Good	14	1
No Names	13	2
Nads	8	7
Popovers	6	9
Assorted DO-E-Nuts	3	12
LeMufs	1	14

Division B

The Leftovers left the Diamonds: 15-8, 13-15, 15-8. Oceanography sank Cowturkey: 15-13, 15-5, 15-13. The Nuts & Bolts belted Riffraff: 15-1, 15-6, 15-5.

Final Standings - Third Quarter

Oceanography	14	1
Nuts & Bolts	11	4
Leftovers	8	7
Diamonds	7	8
Riffraff	3	12
Cowturkey	2	13

Division A fourth quarter playoffs: No Names over Lookin' Good: 17-15, 15-9. Playoffs will continue at 5:30, Monday night, May 1.

Attention N.Y. Tech Students

The New York Institute of Technology is having a book buyback at its Commack College Center book store, on May 1 and 2, from 11 a.m. to 7 p.m. The Center is located at 6350 Jericho Turnpike, Commack. If further information is needed, call (516) 499-4640.

Selected Reading

- Am. Sci. 66, March-April 1978
Reflections on the energy wars. A.M. Weinberg. 153-8
- New Sci. 78, April 6, 1978
Geller a fake, says ex-manager. J. Randi. 11
The politics of reprocessing. F. Barnaby. 18-19
- Phys. Today 31, April 1978
The APS in 1977: Public service in an era of limited growth. G.E. Pake. 23-30
Budget for Department of Energy emphasizes construction. C.B. Waff. 77-9

Bowling

Pink League

Once again Cathy Van Noy had a very productive night with 208/209/582. Also helping the Pinsplitters to take 7 points (putting them in second place) was Marge Stoeckel with 188/189/536. Marie Brenner had a 208, Ellie Adams 180, Helen Keeley 169, Lindora Boyd 163.

The Lickety Splits are in first place by 14 points with only two make-up games and position night coming up.

Purple & White League

The Flounders are in first place by 4 points with the Pen Mac's in second and the Sea Gulls in third.

For the ladies, Sharon Smith rolled a nice 243 scratch (283 gross). Caryl Mac Dougall had a 201, Jeanne Penoyer 200, Nancy Erickson 181, Polly Fuchs 174. For the men, Jim Petro had a nice 559 scratch series with a 203 and 201 game. Other good games were Hank Henck 219, Dick Murgatroyd 211, Jim Griffin 206.

Red League

A great night of bowling for H. Frei with a 232 game 596/692 series. Skelly was 116 pins over average as the Old Timers downed the Blue Jays 8-3. R. Adams chipped in with a 541. The 76'ers won 8-3 over the Bubble Boys. R. Larsen had a 201/214/583

Arrivals & Departures

Arrivals

- Harriet Allen.....Plant Engrg.
- John Blydenburgh.....Plant Engrg.
- George E. Bozoki.....Accelerator
- Douglas Carle.....Plant Engrg.
- Alfred L. Farland.....Central Shops
- Stephen C. La Valle.....Accelerator
- Robert J. Mayer, Jr.....Plant Engrg.
- Susan J. Munro.....Ph. & Gr. Arts

Departures

- Ronald G. Wittlock.....App. Math.

Hospitality Committee

A morning coffee will be held in the Brookhaven Center on Tuesday, May 9, from 9:30 to 11:30 a.m.

All wives of Laboratory employees are welcome. Please come and bring the children. It is suggested that you bring along a toy for your child to play with.

for the night and W. Kollmer a 546 scratch. The Anachems took the Pinball Wizards 8-3.

The Freon Loaders won over the Sandbaggers 8-3. F. Stahman had a 202. R. Jones had a 552 series. The Designers had high game for the night (1054) but lost 7-4 to the Pick-Ups. M. Bull had a 201 and A. Pinelli a 210 (543 series). The Cosmos team lost to the Old Timers II 7-4 in a close match.

Green League

The Sparks took eight from the Dyno-Mites, giving them a twenty-six point lead with three weeks of bowling left. The Old Timers II are hanging onto second as they took seven from the Cosmos. B. Galen had a 213. The Blue Jays could only manage three points from the Old Timers with Mike Iarocci having a 209. The Pinball Wizards took three with C. Dodge rolling a 214. The Got-A-Hit-Ums shook the Trouble Shooters for eleven while the Pick-Ups took the Designers for seven.

L.I. Industrial Tournament

BNL's women's team fared no better than the men as Grumman took the Championship trophy. Representing the Lab were Carolyn Eterno, Lyndora Boyd, Sharon Smith, Renee Flack, Ellie Murgatroyd and Gail Thompson.

Classified Advertisements

68 CHEVROLET - Bel Aire, 4 dr, runs. \$200. Fred, 585-4741.

SHOP MANUAL - For 1968 Cougar, Fairlane, Falcon, Montego, Mustang. \$5. Fred, Ext. 4662.

69 FORD VAN - E200, 6 cyl, auto, carpet, panel, new windshield, carb, universals, 2 buckets, 1 bench. \$1300. Steve, Ext. 2011 or 862-9384.

MOTORCYCLE - Honda CB-175, excel cond, lug rack, cover, crash bar, carriers. \$495. 722-3692 after 5.

MOTORCYCLE - Indian MX 74 cc, excel cond, \$300; helmet, \$15. Fred, Ext. 4407.

72 CHEVY - Vega hatchback, 76 engine, 21 mpg. \$425 or best offer. Ext. 4504 or 473-1523.

66 DODGE - Dart GT, auto, p/s, p/b, many new parts, mechanically excel. \$350. Steve, Ext. 3822 or 929-6527.

DUMPBODY - 2 1/2 yd Garwood mounted on 1947 Dodge truck running cond. \$400 firm. 924-4193.

TIRE - Used H7815, \$8; tube almost new, from another H78-15 tire, cost \$10, will sell for \$6. Barry, Ext. 4118.

70 VOLKSWAGEN - Needs transmission and carb. \$225. J. Ash, Ext. 2983.

68 COUGAR - Color white. For details, call 736-2511.

66 FAIRLANE - Station wagon, good cond. Joe Mead, 273-0542.

77 T-BIRD - Yellow, brown interior, 302 eng, am/fm stereo, a/c, rear def, p/w, 8,900 mi. \$5,500. 261-9897 or 757-6589.

Boats & Marine Supplies

20' FLYING DUTCHMAN - Molded plywood hull, rigged for solo racing, 4 sails and trapeze, good cond, best offer above \$800. Ken, Ext. 2008 or 928-5875 after 6.

14' JOHN DORY - Swivel fishing chair, steering, trailer; Explorer, 17' fiberglass daysailer, 4 hp Johnson, both excel cond, ready for water. Ext. 4335 or 286-9458.

18' CARVELLE - Fiberglass, 100 hp Johnson, radio, depth finder, fishing poles, elec winch on trailer, skis, life preservers. 924-6094.

27 FT AUX SLOOP - Custom built, teak and mahog any, needs work. \$1000. Jeff, Ext. 2953.

68 EVINRUDE OUTBOARD - All electric, 80 hp, long shaft, controls, extra prop, very good cond. \$325. 289-1086.

24' FIBERGLASS - Stamas clear water fisherman; 4 wheel shoreline trailer w/electric brakes, CB and s/s radio, 225 hp inboard/outboard "fresh water cooled engine" in perfect cond. \$5750 firm. Ext. 2978 or 369-2526.

21' GARVEY - Clam boat, w/cabin, needs work. \$400. John, 585-4741.

23' COLUMBIA - Fiberglass, sleeps 4, head, galley, fabric cushions, bow, stern pulpit w/life lines, 4.5 Merc, 2 sails, main cover. 286-1076.

33' RICHARDSON - 185 hp Chrysler, sleeps 5, head, galley. \$2500. Ext. 2893 or 289-1873.

SAILBOAT - Atlantic 9 1/2 fiberglass dinghy dacron sail, aluminum mast oars. \$200. Levine, Ext. 4212.

FOLBOAT - 16' Big Glider, almost new. \$200. Levine, Ext. 4212.

20' LARSEN - Cuddy cabin, navy top, 120 hp Mercruiser, rebuilt in 1977; 1975 Shoreline tilt-trailer, extras. \$2800. Scott, 283-0888, 727-5168 after 6.

Miscellaneous

GARAGE SALES - April 29 and 30, 10-4 p.m., 4 Maple Rd, Strongs Neck, Setauket and 240 E Main St, Port Jeff.

FREEZER - Westinghouse, 17.5, cu ft, frost free, upright, excel cond. \$125. 751-8158.

FEMALE GOAT - Milking w/kid. \$100. 924-3544.

ALUM SCREEN DOOR - 36"x80", 2 yrs old, excel cond, \$15; teenage hutch, blue. \$15 for quick sale. 744-9498 after 6.

POWER CASTER - Park your trailer with a power caster, at a touch of switch, forward or reverse electric, excel cond. \$195. Bob Johnson, Ext. 3354.

LIVING ROOM - Colonial, 3 piece, floor lamp, coffee table, TV 25" b&w, refrig, Westinghouse. Reasonable. 475-4844.

BED - Twin size, box spring and frame, good cond. \$15. Pat, Ext. 2880.

GM CAR SEAT - \$15; umbrella stroller, \$10; 3 way carriage, \$25. Diane, 929-6442 or Bill, Ext. 3369.

CEMENT BLOCKS - 8"x8"x16" also some curved cesspool blocks. 20¢ ea. Walt, Ext. 4504.

INFANT CAR SEAT - Brand new. \$25. Jim, Ext. 3651 or 928-8737.

REFRIGERATOR - 8 cu ft, Sears Coldspot, used only one season, excel cond. \$110. Le, Ext. 2060.

LIVING RM SET - Colonial couch, love seat, and chair, almost new. \$400. 281-3213.

WASHINGTON MACHINE - Hamilton, good cond. \$35. Ext. 3084.

BICYCLE - Fugi, women's 5 spd, 27", perfect cond. Van't Hof, 286-0534.

ELECTRIC ADDING MACHINES - Paper record, good cond. \$15. R. Glasman, Ext. 2819 or 289-0357.

BRAIDED RUG - 7 yr old oval, 9x12, synthetic fiber, brown and beige. \$5. Pete, Ext. 4326.

CAMERA BELLOWS - Focusing rail, 150 short mount lens, 75 mm flat field lens, 35 mm macro lens, T mount, fits any SLR camera. Reasonable. Walt, Ext. 3418.

BASSETT BEDROOM SET - 5 pcs, lighted headbd, triple dresser, two mirrors, 2 nite tables, large chest, must sell - moving. \$700. 878-1570.

STORM DOORS - W/screens, 32" wide, 36" wide; baby items, full size crib, porta-crib, complete stroll-o-chair unit. Ext. 2980 or 289-0532 after 6.

LARGE BLACK PACU - For serious tropical fish hobbyist, approx 16" length, not aggressive. Very reasonable. For info, call Bob, 744-2050 from 9 to 5.

BICYCLE - 26" woman's, good cond. \$25. George, Ext. 4691.

FREE - 700 green plastic tiles, 4"x4". Dave, Ext. 4520.

17' SELF CONTAINED - Trailer, and 1973 Madador Wagon, excel, ready to go. \$3995. 878-4607 eves.

26" AIRENS - 5 hp mower, w/grass catcher, good working cond. 325-0482.

BLACK & DECKER - New circular saw, 7/4" blade, w/2 blades, rough cut and fine cut, tilt guides, adj depth, only used once. \$35. 286-0716 after 6.

OIL BURNER - Heil, \$75; Sears 19 cu ft freezer, \$250. Vinnie, Ext. 2951 or 475-2058 after 6.

STEREO COMPONENTS - 22 watts per channel, amplifier plus am/fm tuner, both in excel cond, still under warranty. Original cost \$320, will sell both for \$200. 732-5829.

GARDEN SHREDDER - Sears 3 1/2 hp, excel cond. Ralph, Ext. 4171.

BICYCLE - Men's 3 spd, rollfast, 26" wheels, 21" frame, excel cond. Ralph, Ext. 4171.

POOL LINER - 15' round x 4' deep, vinyl, heavy gauge, galvanized steel, liner for 15' pool; aluminum awning, 6'x12', baked white enamel. G. Stenby, Ext. 2012.

18' POOL - Sand filter and access. \$150. 585-8336 after 6.

ROSEWOOD TABLE - Oval, 48" long, 48" wide, (2) 20" leaves. \$150. Ext. 4215 or 473-2614.

WEST BEND HOT POT - \$8; Danish style chairs, \$5 ea; slotted coffee table, \$5; formica table lamp, \$5; sofa, \$10. Ruth, Ext. 3431.

SHRUBS - Misc types, you pick - 1 dig. \$5 ea. Walt, 286-0246.

DIVING BOARD - For pool, excel cond. \$50. 286-8758 after 5.

LIVING RM SET - 6 pc white & blk, French Prov, antique gold finish, very good cond; 3 marble tables, sofa and chairs. Pat, 289-1122.

PIANO - Wurtlizer console, excel cond, w/bench. \$500. Le, Ext. 2060.

KITCHEN SINK - Pink, double basin, no faucets, \$15; Chinese style liquor cabinet, black 2 doors w/scrolling 36" h x 36" w. \$25. 363-6845 after 6.

CANVASES - Artist's new 7 x 9; 6 x 7, 60¢/pk of 3; men's slacks, excel cond, some wool, mostly cotton, 34-30 mostly. \$2-\$5. Ext. 3609.

14' SCOTTY TRAILER - Sleeps 5, toilet, ice box, space heater, stove. \$750. Joe, Ext. 2971.

SKI BOOTS - Women's Reiker, size 7, fur lined, excel cond, blue, used only 1 1/2 seasons. 286-1076.

FEMALE IRISH SETTER - Free, 2 yrs old, please give good home. 878-9192 after 7.

FREE - Pedigree Rhodesian Ridgeback puppy, 5 mo old, female, housebroken, very affectionate, good with children and cats. 654-0769.

69 STEURY - Hardtop camper, sleeps 8, sink, stove, ice box, new spare tire, good cond. \$600. 924-4993.

FISHING EQUIP - Garcia 5 Star, 10 ft, med action rod w/Mitchell 402 reel, \$30; Lange pro's ski boots, size 9, \$30; Panasonic portable radio (am/fm/psb). \$40. Rich, Ext. 4011.

REFRIGERATOR - 15 cu ft, GE, good cond. \$50. Ext. 2610 or 744-5709 eves.

MALAMUTE - AKC, spayed female, 1 yr old, great w/children. \$50. 472-0029.

POOL TABLE - W/access, good cond, \$100; dehumidifier, used one season, good cond, \$50; Sears Kenmore dishwasher, coppertone, \$75. Ext. 2298.

SPRING JUMPSUITS - (2) new, size 5, one peach, one yellow. \$5 ea. Sharon, Ext. 3312 or 878-2591.

KITTEN - 6 mo old, needs home, calico, female and very affectionate. Barbara, Ext. 2877.

EARL GREY TEA - For discriminating tea drinkers, half price while they last. \$4/16 oz can. Rino, Ext. 2012.

BICYCLE - Men's Raleigh Flying Scot, 3 spd, 26" wheel. \$30. Levine, Ext. 4212.

SHREDDER - Sears 3 1/2 hp, ideal for making your own compost or mulch, excel cond; bicycle, men's 3 spd, rollfast, 26", excel cond. Ralph, Ext. 4171.

1966 FAN TRAILER - 21' fully self contained, bunk beds, sleeps 8. Ext. 4291 or 727-2861 after 5.

UPRIGHT YEWS - And other evergreens. Mike, Ext. 2575.

WICKER LOVESEAT - W/cushion, 1 side chair, 1 side table. Willing to haggle. Peggy, Ext. 2913.

CONTEMPORARY CHAIRS - (2) avocado, walnut frame, cane sides, loose pillows, foam, plus plastic covers. \$100/pr. 584-6019.

SCOTTS - Lawn spreader, used one season, very good cond, \$15; electric knife, \$8. Hans, Ext. 4581 or 281-5563.

CANON AE-1 CAMERA - W/50 mm 1.8 lens, power-winder, speedlite, camera case, 135 mm 2.8 telo, warranty. \$450. John, 265-2320.

COMPUTER - Radio Shack Z-80 16K Ram perfect, \$1,000; Heath HW 101 and access, SSB Station, \$350; Tektronix 541, \$300. Chuck, Ext. 4479.

APPLIANCES - Westinghouse refrig, \$25; Kenmore washer, \$75; GE dryer (gas), \$75; Whirlpool portable dishwasher, \$75; or best offers. Ext. 2051 or 689-8685.

HAND SAW - Circular w/stand. \$10. Ext. 2610 or 744-5709.

POOL - 24 ft round, above ground w/expandable liner, 4 ft to 7 ft deep, plus extras, good cond, already disassembled. \$600. Paula, Ext. 4702.

KITCHEN TABLE - White w/6 newly upholstered (black naugrahyde) chairs. \$65. 286-8890.

PANASONIC PORTABLE - Am/fm/psb, \$40; 8 spd blender, \$15; pressure cooker, (4 qt SS), \$15; B&W TV antenna, \$5. Rich, Ext. 4011.

TRUMPET - Holton collegiate w/case, excel cond. \$90. Toni, Ext. 3309 or 475-2069 after 6.

RELOADER - Lee load-all for 12 gauge shotgun, new, never used. \$24. Neal, Ext. 4019.

ELECTRIC CAN OPENER - Knife sharpener, \$6; 6 spd hand mixer, \$6. Steve, Ext. 3469.

TV - GE 21" color console \$75; love seat floral, excel cond. \$150; folding bike, good cond. \$30. Ext. 2979.

AIR CONDITIONER - GE 5000 btu, used one year. \$85. George, Ext. 3783.

SOFA - Bassett, 4 yrs old. \$30. Y. Park, Ext. 4410 or 924-0581 eves.

27' HOLIDAY DAY RAMBLER - A/c, full rear bath, like new, must see. 399-0273.

MAXWELL - Needs kids to play with and place to run, Lab-Shep mix, personality plus, 11 mo old, outside dog. Marie, Ext. 2456.

GENUINE ALLIGATOR SHOULDER BAG - Tan, \$7; compact evening lighter, silver w/design, \$3; open handle Corolle cups, set of 4, \$5; lime gown, size 5, aqua gown, size 7, each worn once, stripped blk/gold cotton jacket, size 7. FREE. You pick up. P. Oster, Ext. 4763.

BABY ITEMS - Full size crib, porta crib, complete stroll-o-chair unit, others; storm doors, (2) alum; 32" wide and 36" wide, w/screens. Ext. 2980 or 289-0532 after 6.

75 COX CADET CAMPER - Like new, must be seen to appreciate, \$795; spruce and fir trees, 20" to 26", 2 for \$5. 727-1617.

TAPPAN - 3000 lb trash comp, never used. \$150; Singer factory dress sewing machine, table and attachments, \$150. 281-8063 or 281-6929.

110 LB WEIGHTS - Filing cabinets. Bob Snapka, Ext. 3293.

RECEIVER HAMMERCUND - HQ 129x w/ext spkr, \$70; ham monitor scope heath, bedroom set and misc furniture. Ron, Ext. 4082 or 289-1003.

CABINET STEREO - Electrophonic, am/fm, TT, good cond. \$50. Ext. 4848 or 744-2947.

SCUBA OUTFIT - Complete w/safety vest, speargun, game bag and med-ig wet suit. \$250. Roy, Ext. 4613.

DINING RM SET - 1 yr old, table, 6 chairs, 2 arm-chairs, 2 pc china closet. 289-4403 or 924-3072.

GROUP YARD & GARAGE SALE - April 28 and 29 (large), N Halsey Manor Rd, Manorville (off Exit 70).

AIR RIFLE - Crossman 766, w/telescopic sight, excel cond. Fred, Ext. 4407.

SKI BOOTS - Lange pro's (size 9) \$30; golf shoes (size 9C) \$10; Saltwater fishing rod and reel, \$30; metal gas can (2.5 gal) \$3. Rich, Ext. 4011.

MARANTZ 2265 - Receiver, .08 thd, 7 mo old, mint cond, original cost \$460, sale \$270. Ext. 4701 or 271-2877.

DINING RM - French Prov, 3 leaf table, 4 side chairs, (2 arm) lighted china; all excel cond, \$450; Colonial couch, loveseat, chair, almost new. \$400. 281-3213.

1922 WALTERS PLAYER PIANO - 150 player rolls, needs some work. \$350. Claire, 732-6712.

AM FM STEREO - Receiver, stereo amplifier and two speakers, walnut, turntable, etc. can be added. \$50. Jo, Ext. 4144.

ENGLISH RIDING APPAREL - Jackets, jodphurs, breeches, hard hats, boots for youth and young teen. 929-4530.

WINDOWS - Wood casement, 30"x46 1/2", setup unit of 3 windows, free. T. Morris, 744-5096.

TV - Black & white, 19" Hitachi portable, excel. \$50. 286-9389.

CURIO CABINET - Solid oak, country English style for wall mounting, has leaded glass door panel and interior light. 289-0012.

LAWN MOWER - Black & Decker, electric, 1 1/2 yr old, no reasonable offer refused. 281-8786.

CAR SEAT - GM Toddler, \$15; umbrella stroller, \$10; 3 way convertible carriage (new), \$25. Diane, 929-6442.

CAT BASKET - New wicker w/cushion. \$10. Gordon, Ext. 4095.

CARPET - 12x15, good cond. 928-6032.

LAWN MOWER - 23" self propelled reel, eager 1 motor, good cond. Ext. 2113.

PARAKEET - 1 1/2 yrs old, clean and too full of life, cage and all toys and access. \$10. Chris, Ext. 4612.

WHITE WEDDING GOWN - Never worn, size 10-12. 744-2766.

20 GA. MEC 600 RELOADER - W/2628 wads, powder, primers, 184 Hi & low brass shells, (4) bxs. #9 reloads, (1) bx #4 field load, 50 lbs. #8 shot. \$75. J. Zahra, 727-4515.

DEPRESSION GLASS - Large green fruit bowl, pink quilted veg bowl, honey cake plate, large green pitcher, green vases. 744-3792.

STATIONARY STORE - (2) card racks. Sharon, Ext. 3312 or 878-2591.

FREEZER - Upright, united, 17 1/2 cu ft w/touch-a-matic defrost, like new. \$175. Pete, Ext. 3297.

TRANSMISSION COOLER - Heavy duty, 16,000 lb unit. Orig cost \$60, now \$25. Joe, Ext. 4204 or 588-3146.

Real Estate

Real Estate advertised for sale or rent is available without regard for the race, color, creed or national origin of the applicant.

For Sale

ST JAMES - 5 rm house, 2 car garage w/workshop area, walking distance to stores, rr, school, landscaped, fenced 1/4 acre, \$35,000. Seen by appt, 473-2038 after 6.

MT SINAI - Splanch, 4 bdrms, 2 baths, den, eik, formal d/r, 2 car garage, patio, fenced, w/w, s/s, ohw, appl, 1/2 acre. \$43,000. 331-1325.

COPIAGUE - 2 bdrm Condominium, central a/c, ref, stove, w/w carpet, balcony terrace, tennis, pool, marina, clubhouse. 887-1811.

N PATCHOGUE - Drastically reduced, custom built, modern ranch, l/r, d/r, kit, 3 bdrms, 1 1/2 baths, 20x17 paneled fam rm, garage, landscaped lot, prime area, low taxes, immaculate, mid thirties. 654-4394.

SETAUKET - 2 1/2 yr old mother/daughter hi-ranch, 1/2 acre, 4 bdrm, 2 baths, furnished downstairs apt, 3 Village Schl, 3 mi to SUNY, 16 mi to BNL, \$46,900. Martha, Ext. 3307 or 751-8649.

BROOKHAVEN HAMLET - Custom 3 bdrm ranch, 1 1/2 acres, over sized garage, screened porch, 20'x20' new barn, exquisitely landscaped, many extras. 286-0246.

EAST MORICHES - 3 bdrm ranch, dinette, heated sun-porch, bsmt, w/w, s/s, 2 car garage, appli includ elec range w/self cleaning oven. 12x14 storage bldg, entire backyard fenced, 1/2 acre, low taxes. \$43,500. 878-1471 after 5:30.

EAST MORICHES - Custom built, 3 bdrms, 2 baths, cathedral l/r, d/r, fp, fin bsmt w/sep entrances, over-size 2 car garage, priv beach and marina rights. \$57,500. 878-2603 after 5:30.

MIDDLE ISLAND - 4 bdrm expanded Cape Cod, 24' l/r, d/r, eik, screened patio, fin bsmt w/bar, 2 car garage, 3 zone oil heat, low 40's. Ext. 3635 or 732-5338 after 6.

MASTIC BEACH - 4 bdrm Cape, full bsmt, 100x100 fenced lot, 1 car garage, breezeway, shed, ohw, landscaped, paved driveway, patio, 2 bdrms up and 2 down, large eik, very clean, must sell due to death. VA approved. \$26,000. Taxes \$800. Tom, 325-1033.

BELLPORT/E PATCHOGUE - South of S Country, 2 bdrm, 1 1/2 baths, large l/r, large den/din/rm, full basement, attached 1 1/2 car garage, 150x150 well landscaped yard, priv beach rights, needs work. 286-1768 eves.

SHIRLEY - Beautiful 3 bdrm ranch, den, eik, l/r, d/r, bsmt, garage, 1/2 acre, only 5 yrs old, minutes to Lab. \$40,000. 281-3250.

BELLPORT VILLAGE - 1/2 acre, 3 bdrms, 2 baths, 2 car garage, screened porch, attached greenhouse, many extras. \$49,500. 286-2724.

MIDDLE ISLAND - 6 rm ranch w/completely fin 2 bdrm apt in bsmt, 1/2 acre cyclone fenced, mint cond, on very quiet dead-end street. \$39,000. 698-1813.

STONY BROOK - 3 bdrm ranch, 2 baths, l/r, fp, d/r, eik, central a/c, lawn sprinklers, double garage (auto door), lawn shed, sewers, \$44,900. 751-6909 after 5.

S SETAUKET - Exclusive neighborhood, 4 yr old 3-4 bdrm ranch, center hall, lg country kit, 2 baths, l/r, fam rm, fp, lg fenced in yard, att garage, laundry rm, carpeted, 3 Vil Schls, extras, 1/2 acre, underground cables, \$45,000. Will consider take over mortgage (cash over). 736-2818 or Ext. 2298.

MASTIC BEACH - 2 bdrm ranch, large den/din, paneled, wood deck, 120x100 corner lot, s/s, full bsmt, low taxes, treed, storage shed. \$28,000. 281-7763.