

## The Current Art Scene



Ben Schonzeit's "Tools II (Screwdrivers)", acrylic on canvas, is an example of what's going on in Soho, the flourishing art community in lower Manhattan. Varied media, to challenge your eyes and thinking, is now on view at the BERA Art Show in Berkner Hall, weekdays from 11:30 a.m. to 1:30 p.m. Come during lunch hour, or come after work on **Thursday, February 15, for a party to be held from 5 to 8 p.m.** and discuss "The SoHo Selection" with family and friends. Is it a photograph or is it an oil? Several photo-realist paintings are on display. A deposition group, fragment-sculpture of "found" articles, will stimulate your archaeological curiosity. You will see photo-construction boxes, glass on paper, and at least one water-color which will arouse your nostalgia for impressionistic art. Everyday objects are recognizable at once, presented on a plane you have not seen before.

## Tax Alert!

Taxpayers should be aware of two new tax cuts when they are completing their 1978 New York State tax forms.

First, for persons with taxable incomes of more than \$21,000 per year, the maximum tax rate has been lowered to 12 percent for earned income - income not obtained from interest or dividends. However, in order to take advantage of this reduction, taxpayers must complete form IT-250 which is not included in the tax booklet. On the regular tax form, reference is made to the new rate by a line which reads "Maximum Tax (see instr. pg. 14, complete line 8c and attach Form IT-250)." The form is available in the BNL Internal Audit offices.

Second, either of two special tuition deductions are allowed this year. Parents may

subtract up to \$1000 for tuition payments for each dependent, minus grants received under the state's Tuition Assistance Program. This deduction may be used only if the student attends college in New York State.

The PASS plan (Parents and Students Savings) require that a parent put \$750 per year in a special educational account for each dependent under the age of 18, and deduct that amount from income on the state tax form. There is no restriction as to where the student goes to college. However, to be eligible for the reduction this year, the account had to be set up by December 31, 1978. Parents are advised that money put into this account is an irrevocable gift to the student.

If you claim a tuition deduction, or have established a PASS plan, you must complete Form IT-270. This form is also available at the Internal Audit office.

## Soc. Sec. Check-Up

Probably not many people are in the habit of checking up on their Social Security earnings records. It is a good habit to have and the Social Security Administration encourages wage earners to do so.

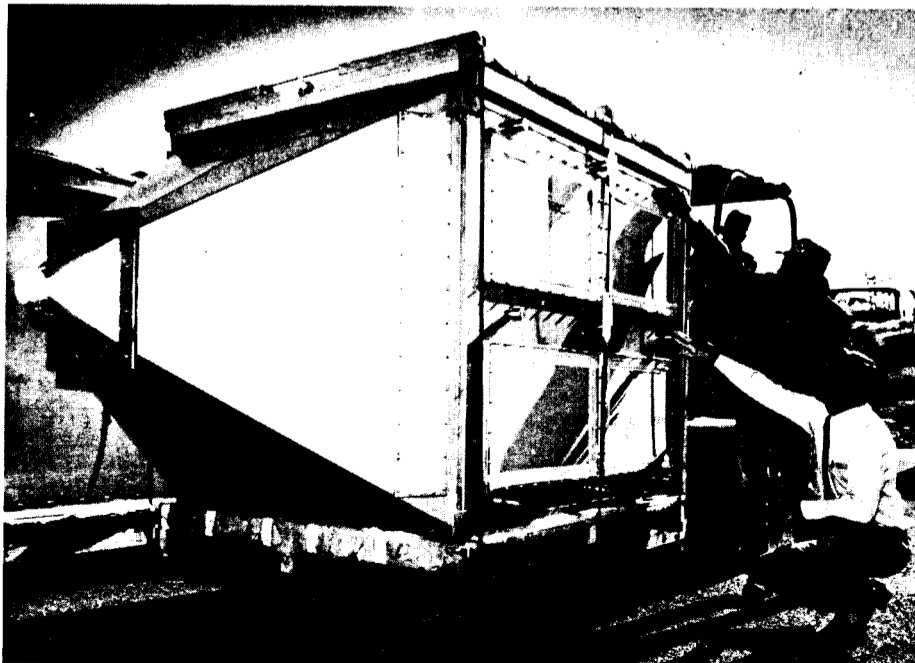
The procedure is simple. Just complete a "Request for Statement of Earnings" postcard, available from the BNL Payroll Office, and mail it to the Social Security Administration, P.O. Box 57, Baltimore, Md. 21203.

What you will get back is a statement of earnings credited to Social Security, by years, for the last three years; the lump sum of earnings since 1950, and the lump sum of earnings reported since 1936.

The Social Security Administration suggests that wage earners check their records every three years. In the event that you discover errors, you can ask for a correction up to three years, three months and 15 days after any year in which the money was earned.

Although it is no problem to verify earnings made at BNL, it may be difficult to track down earnings made elsewhere unless you have kept records. If you were about to throw out old W-2 forms or income tax statements, it would be a good idea to hold onto them until you have checked that the numbers match with your statement from Social Security.

## Medical Facility Nears Completion



Joseph O'Reilly (kneeling, foreground), administrative assistant in Medical, oversees the shipment of a new inhalation toxicology chamber with riggers Bernard Lattanzio (standing) and Charles Spillett (on forklift). Four such chambers were recently installed in BNL's new Inhalation Toxicology facility which is located at the Medical Department and is currently under construction. Expected occupancy is slated for mid-March. Researchers at the facility will use the 5'x5'x6' chambers to study the health effects of energy related gaseous pollutants such as sulphur dioxide and ozone. The Inhalation Toxicology group performs basic research and provides a service for other Lab departments who conduct experiments involving the effects of toxic pollutants.

## ISABELLE Construction Report

Growing out of the back of the ISABELLE R&D area at Bldg. 902 is a 150-foot tunnel, made of galvanized, corrugated steel pipe, a material commonly used for highway storm drains. Although the material is ordinary, the use of it is unique. Designers are taking this material and curving it on a 1250 foot radius to develop a circular magnet tunnel for ISABELLE. Outfitting of the test tunnel with lighting, ventilation, power, drainage, etc. will be finished about the first week in March.

Then the Accelerator Division will begin to set up two parallel rows of magnets and all the other components necessary for operation. When complete, this section will constitute the "First Cell" which will simulate all the conditions of the main ring, with the exception of the beam line. It will be used as a training and mock-up area, from which the planners expect to gain further insight into the final design.

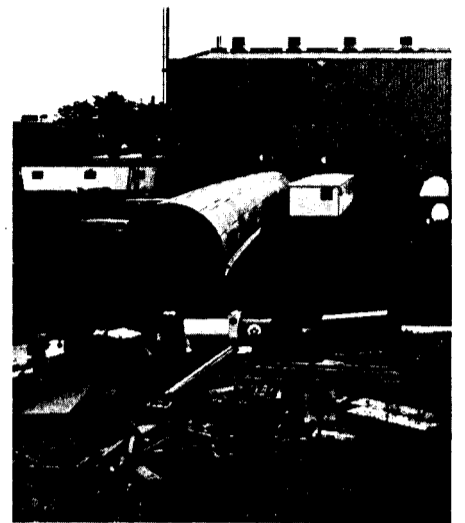
Elsewhere on the construction scene, a \$246,000 contract has been let and an excavating crew has been at work since mid-January clearing scrub pine and other growth from the 200-acre ISABELLE site. This work is expected to be complete by the end of March.

When the site is clear, construction of the facility will begin. Currently out for bids is a multimillion dollar contract to build approximately 4000 lineal feet of tunnel (similar to the tunnel of the First Cell) for sextants 5 and 7, or about one-third of the ring. If the ISABELLE site is thought of as a clock face, this represents the length from 4 to 8 o'clock.

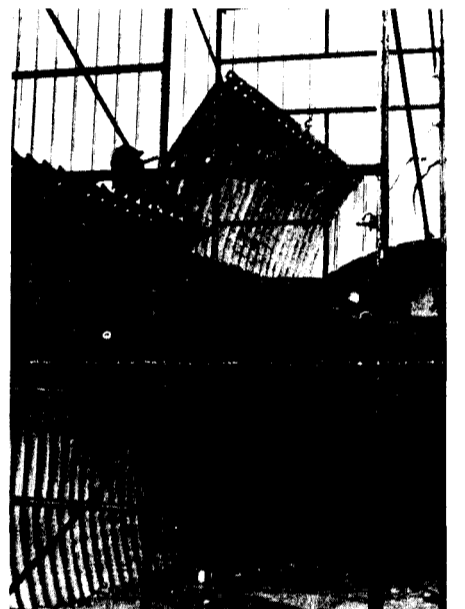
To round out the first quarter of 1979, plans and specifications on the second multimillion dollar contract will go out in early March for construction of the First Experimental Hall (wide angle hall) at the 6 o'clock location on the ISABELLE clock face.

In a few months, as the tunnel section and the wide angle hall are under way, the "real" ISABELLE will start taking shape north of the AGS in the northwest quadrant of the BNL site.

Responsible for the design and construction of all the conventional facilities is the engineering firm of Amman and Whitney, New York City, and the staff of ISABELLE's Construction Division, under the direction of E. Parke Rohrer and Paul V. Mohn.



At left, the 150 foot tunnel, which, when completely outfitted, will form the First Cell of ISABELLE.



Specially designed sections of galvanized, corrugated steel are bolted together to form the tunnel.

## Tune In!

*My comment relates to Laboratory policy about the wood which was cleared to accommodate the ISABELLE project. It is absurd that the Lab should not allow the removal of this firewood to be used by employees who have gone through the expense of installing wood burning stoves to conserve oil and save many fuel dollars. If the Lab were using this wood for a specific purpose, it would be fully understandable that removal of wood was not allowed. However, I have found out it is their full intention to let it rot.*

*A plan could be easily instituted to remove the wood without the use of any power tools, which I believe could prove to eliminate accidents. If the wood was cut into, say for argument's sake, four foot lengths it would be no problem for those who wished to take it home. Each person should also be regulated to a limited amount.*

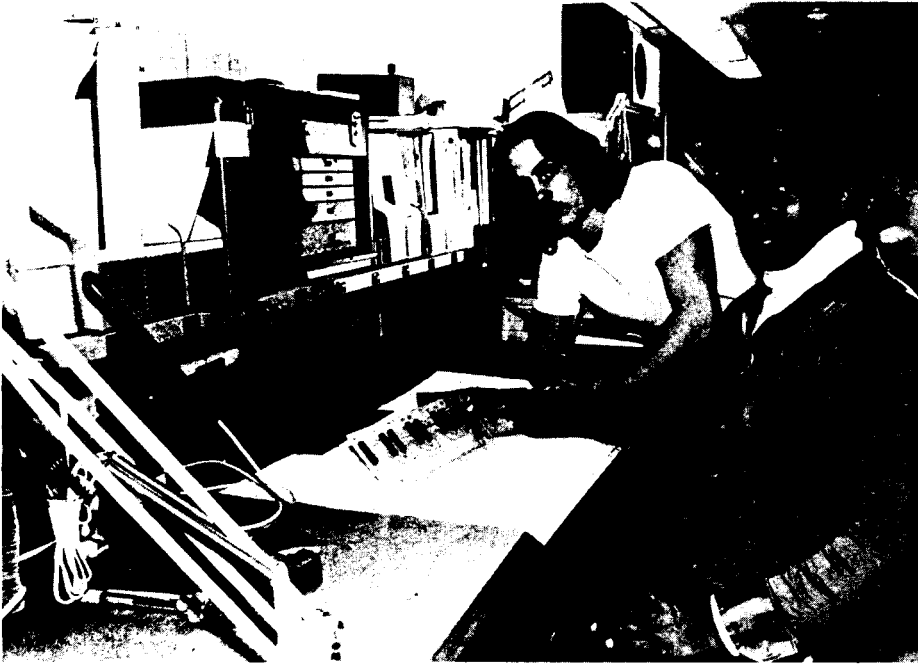
*A plan such as this could be at least putting a small dent in overall conservation. Conserve energy while there is still energy to conserve.*

### Answer:

The wood at the ISABELLE site is government property as is the case with scrap metal, paper, etc. If we can find a market for this material it will be sold and the revenues credited to the U.S. Government. In the event that we cannot locate a buyer or that it would not be considered feasible to sell, then we would consider other alternatives such as making it available to employees and/or the general public.

I would be interested in knowing who advised you that we plan to commit the wood to rot. This is probably the least desirable of the various alternatives.

—Vincent R. O'Leary  
Associate Director For  
Administration



Longwood High School students Daren Greer (right) and Robert Kelly (left) assist BNL technicians at the NSLS. Here, they are at the trim power supply for Linac-to-booster transport line.

— photo by Walton

## Co-Op Students Train For Future

The BNL-sponsored High School Co-Op program has been in operation since 1969 and this year, offers 21 students from area high schools part-time employment in various departments on-site. The annual work-study program runs from October through April and is for students 16 years or older from Bellport and Longwood high schools.

Students who express interest in the Co-Op program are interviewed both by their high school guidance counsellors and by the program director, Sue Foster, Personnel. Students are selected to enter the program on the basis of their interest, aptitude, and their ability to fit into openings on-site, in addition to other criteria. Participants work twenty hours per week and are paid by BNL. They also receive academic credit for their work at the Lab.

The aim of the Co-Op program is to give clerical or technical training to youth so that they will be better prepared to enter the job market upon graduation from high school. Foster says that this goal is accomplished by placing Co-Op students with conscientious supervisors. Supervisors generally oversee the work of their student to insure that his or her Lab work-experience is meaningful.

The students are placed in almost every

BNL department, noted Foster. For example, working in the Lab's Affirmative Action office is Bellport High School senior Cathy Gonnely. Cathy is learning clerical skills such as typing, filing and answering the telephone. Her supervisor is Fran Ligon. Cathy, who said she prefers her afternoons at work to school, has future plans to become a policewoman.

Eric Amengual, a junior from Longwood High School, works with Betsy Sutherland in Biology where he is an assistant to researchers who are studying the interaction of ultraviolet light and cells. Eric appreciates the opportunity to learn about the Lab's work and hopes his work-study experience will help him decide whether he might eventually like to become a technician.

Bellport High School junior Nancy Rivera works with Gail Williams in the Office of Scientific Personnel. Nancy is putting to use her high school secretarial courses while performing a variety of clerical duties. She hopes to become a secretary in the future.

Permanent employment at the Lab upon completion of the Co-Op program is not a primary aim, said Foster. There are, however, three full-time employees now on-site who began as high school Co-Op students.

## Summer Student Review

The Office of Academic Relations notes that completed applications for the 1979 Brookhaven Summer Student Program will be available for review in that office as of February 20. All research departments are invited to send staff members to select students. Guidelines regarding the selection of summer students are being distributed to departments from the Office of Academic Relations.

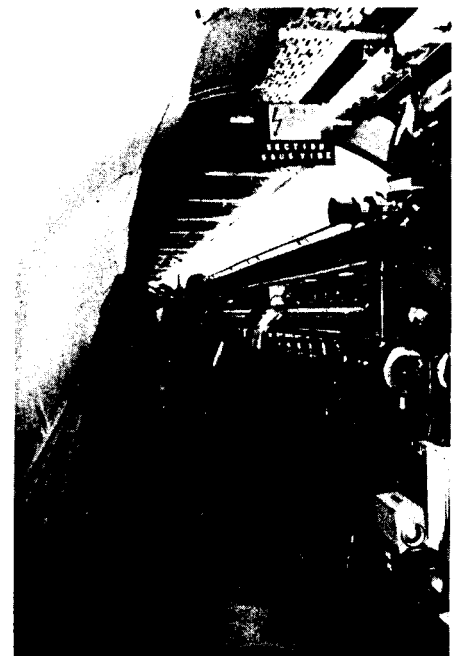
## Gravestone Epitaphs That Never Were

Many famous persons have announced — usually tongue in cheek — what epitaphs they would like carved on their gravestones after their deaths. Here are the epitaphs 12 celebrities chose for themselves.

1. W.C. FIELDS (comedian)  
"On the whole I'd rather be in Philadelphia."
2. GEORGE BERNARD SHAW (author)  
"I knew if I stayed around long enough, something like this would happen."
3. CLARK GABLE (film actor)  
"Back to silents."
4. ERNEST HEMINGWAY (author)  
"Pardon me for not getting up."
5. ROBERT BENCHLEY (comedian and author)  
"This is all over my head."
6. JEAN HARLOW (film actress)  
"Of this quiet and peace/I'm very fond;/No more remarks — 'She's a/Platinum blonde.'"
7. FREDRIC MARCH (film actor)  
"This is just my lot."
8. WILLIAM HAINES (film actor and decorator)  
"Here's something I want to get off my chest."
9. EDDIE CANTOR (comedian)  
"Here in nature's arms I nestle,/Free at last from Georgie Jessel."
10. DR. ALBERT SCHWEITZER (Nobel peace prizewinner)  
"If cannibals should ever catch me/I hope they will say:/'We have eaten Dr. Schweitzer/And he was good to the end... /And the end wasn't bad.'"
11. RUBE GOLDBERG (cartoonist)  
"Dear God: Enclosed please find Rube Goldberg, Now that you've got him, what are you going to do with him?"
12. GEORGE ARLISS (stage and film actor)  
"All my old junk gone to the storehouse,/Here I am, God, starting for your house./In order to prevent possibility of ruction/Am bringing you back your original production."

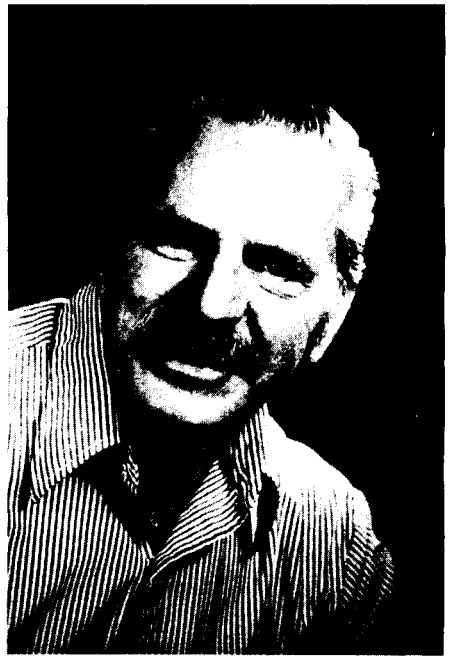
—from The Book of Lists, Copyright © 1977 by David Wallechinsky, Irving Wallace and Amy Wallace. Reprinted by permission of William Morrow & Company, Inc.

## Exchange Visit



While on vacation in Europe last month, Exhibit Center Manager Janet Hoefling (left) spent a day touring CERN in Switzerland as a guest of Roger Antoine, Head of Press and Visits Service (right). Hoefling, who received a five hour tour in which she saw all the laboratory's facilities, was invited to visit CERN by Antoine last summer when he toured BNL and she served as his guide. They are shown in the ring of CERN's 400 GeV super proton synchrotron. In places, the machine spans the border of Switzerland and France.

## Retired



George Mooney, Design Engineer in the Accelerator Department, retired on February 2. He has been with the Laboratory since November 19, 1962.

—photo by Rosen

## A Night At The Opera

One of the operas of the current Metropolitan Opera season, Poulenc's "Dialogues of the Carmelites," will be the subject of a multimedia presentation at the next meeting of Le Cercle Francais de BNL. The meeting will be held at 8 p.m. on Thursday, February 15 at Berkner Hall. All members of the BNL community are cordially invited to attend. A donation of \$1 will be asked of those who are not members of The French Group.

The French Group's multimedia presentation, arranged by Jim Muckerman and Ralph Weston, includes a tape recording of major scenes of the opera and is coordinated with projection of the libretto in French and English. A few additional scenes will be filled in by a live performance. There will also be paintings.

Poulenc's opera is one of the few contemporary operas to have a solid place in the current international repertory. It is based on a play by Georges Bernanos, the French novelist who may be best known in the U.S. for "The Diary of a Country Priest."

The historical event upon which both the play and opera are based occurred during the French Revolution when sixteen Carmelite nuns from a convent near Paris were condemned by a Revolutionary Tribunal and put to death by guillotine. One Carmelite, who was away from the convent at the time of the others' arrest, escaped death and became the historian of this tragic and bloody episode from The Reign of Terror. In the drama, the Revolution provides the background and the motivation behind the story of Blanche de la Force, the youngest of the nuns, whose attempts to overcome fear culminate in a final act of courage in the face of death.

## New York Train Trip

The Hospitality Committee is planning a group railroad trip to the city on Wednesday, February 21. Departure will be at 8:32 a.m. from the Patchogue LIRR station. Round-trip fare for adults is \$2.45, children under six years ride free.

Reserve a ticket by sending your fare through the U.S. mail to P.O. Box 322, Upton, New York 11973, no later than Thursday, February 15. Make checks payable to "Brookhaven National Laboratory." Your tickets will be given to you on the train. Refunds will be made only if cancellations are received by the Friday preceding the scheduled trip.

## Arrivals & Departures

### Arrivals

Linda E. Barello	Applied Math.
Elizabeth A. Buzash-Pollert	Biology
Paul M. Curtis	Chemistry
Nicholas A. Guglielmino	Accelerator
August E. Hoffman	Accelerator
Andrew H. Kuniyuki	Biology
Hai-Dee Lee	Medical
Louis Mazarakis	Accelerator
Ronald D. Parks	Physics
Charles R. Quick, Jr.	Chemistry
Peggy A. Rosado	Nuclear Energy
George F. Sintchak	Instrumentation

### Departures

George Mooney	Accelerator
Samuel Silberstein	Energy & Env.

## Notice

The Physics Department requests that all books borrowed from the Physics library be returned so that re-cataloguing may be completed.

## Tune In!

*I believe the following information concerning the Supplemental Retirement Annuity (SRA) should be brought to the attention of all BNL personnel.*

*Last March 1978 I took out an SRA contract having \$50.00/month invested into TIAA. I cancelled the contract January 5, 1979 and had planned to take out another contract. However, expecting to receive more than my premiums applied, I received a cash surrender value of \$445.71. My premiums applied were \$450.00. This supposed savings cost me \$4.29. Some bargain! I realized that a slightly higher expense charge to cover the cost of the additional feature (TIAA - 4%) would be included but I never thought that I'd be a loser.*

*I can't understand how our Teachers Insurance and Annuity Association can call themselves a non-profit organization. I suggest that those BNL employees with SRA contracts look into their investment.*

### Answer:

Your problem stems from the fact that the Supplemental Retirement Annuity (SRA) is not intended or designed to be used for short-term savings.

Like all TIAA plans, SRA is basically a retirement plan, especially formulated for persons who want to set aside tax-deferred retirement funds over and above amounts being accumulated under their regular retirement program. The primary objective of any tax-deferred annuity plan such as SRA is to reduce current taxable income and defer taxation until income is received

as retirement benefits, when the retiree is, presumably, in a lower tax bracket.

Under current SRA rates, TIAA deducts a one-time 4 percent expenses charge from each monthly contribution to SRA and pays an annual interest and dividend of 7.75 percent on the average accumulation balance during the year. Applying these rates to your case, your contribution for investment purposes was \$48 a month (\$50 less 4 percent), amounting to a total accumulation over nine months of \$432. Since the interest and dividend was based on your average accumulation of approximately \$216, the total cash surrender value of your SRA after only nine months would have to be less than the total amount you contributed. It is only through long-term participation, when the tax-deferred interest and dividend earnings are added annually to the rising contribution accumulations, that SRA achieves the investment growth for which it was intended.

The cash-in option of SRA, a feature not available under the regular retirement plan, does of course allow for the withdrawal of SRA funds before retirement. If the withdrawal is made after a substantial period of participation, SRA can be considered to be an effective long-term savings plan. However, anyone who wishes to save funds that may need to be withdrawn in the short-term should choose other methods designed for that purpose.

Very truly yours,  
Joseph S. Washburne, Manager  
Personnel and Labor Relations

# BROOKHAVEN BULLETIN

Published weekly for the employees of  
**BROOKHAVEN NATIONAL LABORATORY**

**BERNICE PETERSEN**, Editor  
**ANNE BAITINGER**, Staff Writer  
**ROSANNE PAGANO**, Editorial Assistant

40 Brookhaven Ave., Upton, N.Y. 11973  
Telephone (516) 345-2345

**CARL R. THIEN**, Public Relations Officer

## Letters To The Editor

To The Editor:

It is our understanding that according to Article 44 of the New York State Public Health Law any employer with more than 25 employees is obligated by state law to offer a Health Maintenance Organization health insurance plan if there is one available in the area of residence of the employees.

Two such HMO's have recently opened in the Brookhaven area: the Community Health Plan of Suffolk (a Blue Cross plan) in Hauppauge and the Ronkonkoma Center of the East Nassau Medical Group, an affiliate of the Health Insurance Program of New York.

Since HMO's have been endorsed and promoted by the federal government as a means of controlling the skyrocketing cost of medical care while providing high quality comprehensive medical services, we wonder if and when Brookhaven National Laboratory is planning to offer one or both of the above plans as alternatives to the current health insurance plan.

—Nicholas F. Gmur  
—Eloise K. Gmur

Personnel Manager, Joseph S. Washburne, replies:

The Laboratory has been cooperating with the Community Health Plan of Suffolk of Hauppauge since its inception. CHP is the federally qualified and state certified HMO serving the residents of the five western townships of Suffolk County and the eastern part of Nassau County.

The CHP of Suffolk has tentatively scheduled their membership solicitation for Brookhaven National Laboratory employees for midsummer 1979.

Full information will be provided by Personnel when CHP's plans are definite.

**Editor's Note:** According to a Factbook on the subject, "A Health Maintenance Organization (HMO) is an organized system of health care which assures the delivery of comprehensive, continuous, coordinated health care services to a voluntarily enrolled group of persons under a prepayment plan." The prepayment plan is "usually negotiated for one year with monthly payments, for which the providers or HMO are at risk to provide all contracted health services."

## Service Awards

The following employees will receive service awards during the month of February.

### Thirty Years

**Lester M. Corliss**.....Chemistry  
**Richard L. Fuka**.....Photog. & GA  
**Raymond J. Heus**.....Energy & Env.  
**Raymond W. Stoenner**.....Chemistry

### Twenty-Five Years

**John W. Bittner**.....Accelerator  
**John J. Grisoli**.....Accelerator  
**Edwin A. Popenoe**.....Medical

### Twenty Years

**Leonard S. Bacelli**.....Plant Engrg.  
**Donald P. Brown**.....Accelerator  
**John Connelly**.....Plant Engrg.  
**Jean C. Lauer**.....Adm. Sys. & Data Proc.  
**Grant Mayo**.....Plant Engrg.  
**Milda E. Vitols**.....Physics

### Ten Years

**Hugh S. Isaacs**.....Energy & Env.  
**Richard M. Lambrecht**.....Chemistry  
**Freddie O. Lawson**.....Medical



## For The Handicapped Only

Unless you are handicapped and have obtained the appropriate I.D. card from Police Headquarters, please do not park in those spaces clearly designated for persons with physical disabilities. These parking areas are strictly reserved for the handicapped and should be so honored.

## Volleyball

### Mixed League

#### Division A

On January 29, Oceanography beat the Nuclods: 15-2, 15-5, 15-2. Nuts & Bolts bolted over the Diamonds: 15-5, 15-9, 12-15 while the No Names beat Family Affair: 15-9, 15-4, 15-9. Popovers popped over Lookin's Good: 2-15, 17-15, 15-11. In a make up for January 17, the Diamonds over Popovers: 15-10, 15-10, 15-10.

#### Standings

Oceanography	15- 0
No Names	11- 4
Family Affair	10- 5
Lookin' Good	8- 7
Nuts & Bolts	8- 7
Diamonds	7- 8
Nuclods	2-13
Popovers	2-13

#### Division B

Balls & Strikes took all three from the Wisa's: 15-9, 16-14, 15-5. Nads shone over the Leftovers: 7-15, 15-7, 16-14, and Medical swept LeMufs: 15-4, 15-7, 15-3.

Balls & Strikes	6- 0
Medical	6- 0
Leftovers	4- 2
Nads	2- 4
LeMufs	0- 6
Wisa's	0- 6

## Bowling News

### Purple & White League

The Purple & White had another good night of bowling. This week the ladies were in the limelight. Audrey Bangel rolled high game for the women with a 229 and had a 554 series. High series was bowled by Caryl MacDougall with a 563. Jim Griffin had high game and series for the men with a 211/218/180-609 and Nick Masciopinto had a 212. Other good games were bowled by Sharon Smith 221, Carolyn Eterno 204, Mary Jane Gillette 191/186, Irene Sperry 187 and Jeanne Penoyar 182.

### Red League

Some great bowling this week! The 76'ers won 7-4 over the Blue Jays. R. Larsen had 258-204 and a 655-694 series: they knocked down 3031 sticks. J. Morris had a 203 and 628 gross, and F. Griswold 607 gross. The Old Timers also knocked down 3000 pins, but could only manage 4 points from J. Spraggins and Co. R. Adams had 232-220 and a 626-680 series. W. Reams had a 229 and 610 gross.

The Designers took the Sandbaggers 8-3. A. Pinelli had a 225 and 632 gross. C. Bohnenblusch grossed 622, R. Hones 616 and J. Ferrero 615. The Freon Leaders won 8 from the Trouble Shooters. R. Marlow had a 620 gross and J. Kelczewski a 614. This Isa Team managed 4 from the Dynamites. R. Barberich threw a 215 while the Anachems came away with 4 against the Old Timers II. R. Wilson had a 203.

## Notice

Discount tickets to the Long Island Boat Show are now available at the BERA Film Office in Berkner Hall.

## A Day For Runners

The BNL Roadrunners will hold their second annual Runner's Day on February 24 at Berkner Hall. Activities will commence at 11 a.m. with a fun run of varying distances. Indoor events will start at 1 p.m. when a film of the 1976 U.S. Olympic Marathon Trials will be shown. The program will also include sessions on beginning running, shoes, injuries and training programs. There will be refreshments, baby-sitting and a few special surprises. All BERA members, families and friends are cordially invited to attend. Watch the gym bulletin board and the Runaround for more details.

## Cafeteria Menu

### Week Ending February 16, 1979

<b>Monday, February 12</b>	
Potato/leek soup	(cup) .30
	(bowl) .40
Turkey a la king on toast points	1.30
Western omelette and 1 veg.	1.30
Hot Deli - Sloppy Joe	(on bread) 1.15
	(on roll) 1.25

<b>Tuesday, February 13</b>	
Split pea soup	(cup) .30
	(bowl) .40
Chinese pepper steak on rice	1.40
Deluxe pizza and tossed salad	1.30
Hot Deli - Pastrami	(on bread) 1.20
	(on roll) 1.30

<b>Wednesday, February 14</b>	
Cream of spinach soup	(cup) .30
	(bowl) .40
Breaded flounder filet w/fr. fr.	1.35
Stuffed pepper w/spaghetti	1.35
Hot Deli - Baked Virginia ham	(on bread) 1.30
	(on roll) 1.40

<b>Thursday, February 15</b>	
Beef barley soup	(cup) .30
	(bowl) .40
Tacos w/refried beans	1.35
Scalloped ham and potatoes	1.30
Hot Deli - Smoked turkey breast	(on bread) 1.30
	(on roll) 1.40

<b>Friday, February 16</b>	
Fish chowder	(cup) .40
	(bowl) .50
Filet of fish Parisienne	1.40
Barbequed spare ribs and 1 veg.	1.40
Hot Deli - Fried clam roll w/cole slaw and chips	1.40

## Aviation Club

Aviation Club members are reminded that the next meeting will be at noon, Wednesday, February 14 in Room A, Berkner Hall. Members are requested to pay their \$5 annual dues.

### Pink League

Team standings are still symmetrical: Pinsplitters 12-9, No Names 11-10, Blake's Bellyaches 10-11 and Lickety Splits 9-12.

Although Mary Grace Meier had the high game of 183, Marge Stoeckel had a great series of 181/161/487 to take high series for the night. Pat Jencius had a 179, Fran Briening 170, and Millie Connelly 169.

### Green League

The Sparks moved into first place as they downed the Cosmos for eleven. B. Sick had a 203 while for the losers, C. Neuls had a 207. The Dyno-Mites dropped to second as they only took seven from This Isa Team. The Old Timers II took seven from the Anachems, with B. Galen having a 244. The Pinball Wizards subdued the Old Timers for seven. J. (The Kamikaze Kid) Spraggins finally came out of the woodwork and bowled a 205/223/595 scratch, 706 gross. The Blue Jays could take only four from the 76'ers. H. Marshall had a 201 and D. Stelmaschuk a 242. The Trouble Shooters took three.

### Gold League

The Question Marks are in first place. Betty Semplicino and Marie Susa received patches for "Triple Score" and Kay Hunt received a patch for bowling 100 pins over her average. High games for the evening were bowled by Lynn Tice 228, Betty Jellett 186/166 and Kay Hunt 190/174/162/526 series.

## Classified Advertisements

### Placement Notices

The Laboratory's placement policy is to select the best-qualified candidate for an available position, with consideration given to candidates in the following order of priority: (1) present employees within the department, with preference to those within the immediate work group; (2) present employees within the Laboratory as a whole; and (3) outside applicants.

Each week, the Personnel Office lists new personnel placement requisitions. The purpose of these listings is, first, to provide open placement information on all nonscientific staff positions; second, to give employees an opportunity to request consideration for themselves through Personnel; and, finally, for general recruiting purposes. Because of the priority preference policy stated above, each listing does not necessarily represent an opportunity for all candidates. As a guide to readers, the listings are grouped according to the anticipated area of recruitment, as indicated below. Except when operational needs require otherwise, positions will remain open for one week following publication date.

For further information regarding a placement listing, contact the Personnel Placement Supervisor, Ext. 2882.

**LABORATORY RECRUITMENT:** Opportunity for present Laboratory employees.

912. DATA SERVICES ASSISTANT - Requires good keypunch and typing skills. Must have ability to process computer input and output data. Will perform keypunch and general office duties. Department of Nuclear Energy.

**OPEN RECRUITMENT:** Opportunity for present Laboratory employees and outside applicants.

913. ELECTRONIC TECHNICIAN - AGS Control Room Operator - Requires AAS or equivalent in electronic technology and expertise in systems troubleshooting, computer operation and controls. Knowledge of high power rf systems and high current power supplies desirable. Rotating shifts. Accelerator Department.

914. ELECTRONIC ENGINEER - Requires BS/MSEE or equivalent capabilities and broad background in fast digital logic and data acquisition systems technology. Familiarity with mini computers is desirable. Accelerator Department.

915. SENIOR MECHANICAL DESIGNER - Requires AAS degree or equivalent capabilities and experience in machine, pressure vessel, cryogenic and/or process piping design. Must understand welding and machine shop practices. Accelerator Department, ISABELLE Project.

916. ELECTRONIC TECHNICIAN - Requires AAS or equivalent in electronic technology and a good background in pulse circuits, analog and digital controls and high voltage and/or high current power supplies. Should be skilled in troubleshooting heavy electronic power supplies and associated controls. Accelerator Department.

917. ELECTRONIC TECHNICIAN - Requires AAS or equivalent capabilities in electronic technology and background in low level analog and digital circuitry. Should be skilled in the construction and debugging of prototypes. Accelerator Department, ISABELLE Project.

918. ELECTRO-MECHANICAL TECHNICIAN (weekly or monthly) - Requires an AAS or equivalent capabilities and substantial experience in mechanical, electronic and vacuum technology. Experience in the fabrication, assembly, testing and evaluation of x-ray and ultraviolet experimental equipment would be desirable. Physics Department/National Synchrotron Light Source Project.

919. MECHANICAL TECHNICIAN - Requires strong mechanical skills and experience relevant to magnet coil winding including epoxy impregnation processes. Physics Department/National Synchrotron Light Source Project.

920. SENIOR STATIONARY ENGINEER - Demonstrated experience in the maintenance, repair and operation of high pressure boilers firing #6 fuel oil. Current stationary or marine engineer license highly desirable. Plant Engineering Division.

921. JUNIOR ACCOUNTANT - Requires BS in accounting or equivalent experience in diversified book-keeping, and accounting procedures. This experience is to include general ledger, fixed assets, ledger analysis and bank reconciliation. Fiscal Division.

922. OFFICE SERVICES ASSISTANT - Requires excellent record keeping and computational skills. Will prepare and process invoices and travel vouchers for payment. Fiscal Division.

### Autos & Auto Supplies

72 BUICK LE SABRE - 4 dr hdtp, full pwr, new snow tires & exhaust, excel. \$995. Ext. 3593.

40 CHEVY PICKUP - restored, orig, green, excel. John, Ext. 2501, 751-6390.

72 CADILLAC - AM/FM stereo tape, 67,000 orig mi, new tires. \$2200. W. Powell, 732-1913.

79 FORD BRONCO - ps/pb, 4 w/d, must sell. Asking \$6500. 727-3719 after 5.

65 JEEP - CJ5, 2 w/d, rebuilt 283 Chevy, runs very well. \$750. 298-5238.

2 TIRES - Mickey Thompson Challenger L60-15, good tread remaining. \$70/pr. L. Emma, Ext. 4218.

71 PEUGEOT 304 STATION WAGON - front w/d, excel gas mileage, about 75,000 mi. Asking \$400. Ext. 2914, 286-3742.

TIRE - JC Penny Sport 1.65x13", brand new w/4 hole rim. \$15. Dick, Ext. 7635.

74 FIAT 128 - 2 dr sedan, 58,000 mi, excel cond, new valve job, brakes, muff, batt, AM/FM cassette. \$1500. Ext. 4492, 286-0384.

74 PONTIAC FIREBIRD - V8, radials, AM/FM, a/c, ps/pb, excel cond. \$3000 firm. 924-6021.

70 VAN - extra long, 6 cyl, 60M mi, good mech cond. \$795. (914) 969-5619.

63 MERCURY COMET CONV - new top, new batt, good cond. Asking \$500. Debbie, Ext. 2303.

76 PINTO - low mileage, a/t, good cond. \$1695. Pete, Ext. 4285, 732-0267.

71 OLDS CUTLASS - 350 V8, ps/pb, excel cond. \$600. 281-7763.

73 CADILLAC SEDAN DE VILLE - 4 new tires, 57,000 mi, loaded, excel cond. \$2500. Gloria, 269-1153.

73 TR-6 CONV - std shift, white/blk int. \$2750. Al, Ext. 3739, after 6 call 728-8528.

78 TRIUMPH SPITFIRE - brown, 11,000 mi, AM/FM cassette, Jensen co-ax spkrs, still under warranty, leaving area, must sell. Walter, Ext. 2907, 744-3339 after 6.

70 DODGE DART SWINGER - 6 cyl, a/t, 60,000 mi, excel cond. \$1200. Ext. 3699.

60 CHEVY STATION WAGON - 6 cyl, a/t, 47,000 mi, excel for restoration, no dents, eng needs work. \$400. Susan, 698-4966 after 6.

74 COMET - 2 dr, 6 cyl, ps, a/t, new tires, low mileage, excel cond, economical. \$2000. 283-6338 after 4.

70 RALLYE 350, CUTLASS S - 25 options incl rocket 350-V8, turbohydromatic trans, ps/pb, a/c, etc, 82,000 mi, 1 owner. \$775 or best offer. Anne, 878-8905.

78 TOYOTA COROLLA - 5 spd, radials, radio. \$3400, negotiable. Ext. 2337.

70 BUICK SKYLARK - good trans, needs some body work. Best offer. Ext. 4452, 543-0079.

1 PR VW SEATS - high backs, blk, very good cond. \$60. Lee, Ext. 2012, 286-0436.

70 BUICK ELECTRA 225 - new trans & paint, 100,000 mi, 15-16 mpg. Asking \$650. 588-8262.

71 DODGE CORONET - 4 dr sedan, ps, a/t, sm 8, all new parts, good running cond, needs paint job. \$750. Joan, Ext. 2549.

IN-DASH TAPE DECK - push button, AM/FM 8 track stereo, excel cond. \$70. Ext. 4701, 271-2877 eves.

TIRES - (4) F60-14 Peerless Sprint GT mounted on 7 1/2" wide Keystone Classics, fits Ford & Plymouth. \$180. Mike, Ext. 2021.

71 CHEVELLE MALIBU - 2 dr, V8, a/t, AM/FM radio, snow tires, 80,000 mi. \$750. Ext. 4555, after 6 pm, 261-6352.

73 PONTIAC GRAND PRIX - white w/red int, AM 8 track tape, 58,000 mi, excel cond. \$2500. Ext. 4207, 727-5158 after 5.

71-73 CHEVY VEGA HOOD - \$25; 2 steel belted radials mounted on Chevy 13" rims, excel cond, \$70/pr. Sue, Ext. 2050.

TIRES - (1) HR78-14 steel belted radial, \$10; (1) GR78-14 Uniroyal snow, \$15; (1) Philco in-dash AM push-button radio, \$15. Chris, Ext. 3919, 929-4310 after 6.

76 ASPEN WAGON - top cond, a/c, loaded. Best offer. 744-7641.

### Boats & Marine Supplies

15' FIBERBLASS - Woodson tri-hull w/40 hp out-board, good cond. 732-9324.

### Miscellaneous

SCALE - old (1944) 100 lb, fair cond, as is, no guarantee, obtain form at Upton P.O., bids close 2/19.

UNITED UPRIGHT FREEZER - Harvest Queen, 6 shelves + 6 door shelves, lock, 72"x34". \$300. Antoinette, 821-0832.

CB - Courier Gladiator PLL-40, AM/single side band, extras, 6 mos new, \$225; antenna specialists 3 element beam. \$45. Bill, Ext. 4605.

WEDDING GOWN - pearls, heavy lace over organdy, headpiece, long veil, detachable train, size 12. 924-5422.

DBL DRESSER - w/mirror, like new, \$195; violin, \$300; window air cond, \$35. 744-8680.

CLOTHES DRYER - Sears portable, gold, 110 v. Best offer. Ron, Ext. 4636, 281-6630.

FLOOR WAXER - 15" Mercury, like new, commercial. Cost \$425, sell \$300. 472-1577 after 6.

TENNIS RAQUETS - Davis Imp, Wilson metal, both excel cond. Ext. 3403, 751-3883.

19" B/W TV - Admiral, 2 yrs old. \$35. Ext. 4522, eves & weekends Ext. 3118.

SKIS - Kneissl Blue Star 185 cm w/Tyrolia 250 bindings, very good cond. H. Connell, Ext. 2601.

TWIN BED FRAME - w/maple headboard, \$15; mica top din table, 29"x59", round end, \$20; both excel. 654-2591.

NORMAN KILN - unused for home use, w/access. \$200. 924-6582.

COLOR BAR & DOT GENERATOR - 12 patterns & clear raster, front panel tuning channels 2-6, RF output fully adjustable. Frank D., Ext. 4597.

RECLINER - brown vinyl, \$35; office chair, wood, \$25; TV table, expandable, \$3. Rich, Ext. 4172.

WASHING MACHINE - Sears portable, like new, \$175; metal frame rocking lawn chairs, \$30; arborite table, \$25. Tom, Ext. 3535.

STRINGS - mandolin #2 & #3, 75¢ ea; Stanley bench plane, 2" cutter, new, \$5; chess set, \$1.50. Sue, Ext. 4207.

4 DBL HUNG SASH & FRAMES - alum, for masonry walls, 37 1/4" w x 41" h, can be adapted to wood frame structure. \$15/ea, 4/\$55. Pat, Ext. 4519.

SKIS - 180 cm, Olin Mark VII, bindings - Salomon 444, boots - Hiering size 10. \$50 (skis & boots). Ellie, Ext. 2600.

DOWNHILL SKI BINDINGS - Look N17, in good shape. \$45. Ulf, 286-3679 after 3.

PLANT SALE - orchids & asstd plants, reasonable prices. I. Merritt, 589-5126.

OPTIGAN ORGAN - many beautiful sounds, bench, access, anyone can play. \$200. 744-8117.

STOVE PIPE - triple wall Thor, 3-30" sections, roof flashing, ceiling support & top cap. \$100. Ray, Ext. 4479.

FLOOR SCRUBBER & WAXER - \$20; Sears rider lawn mower, self-starter, new front end, blade & belts, \$175; elec meat slicer, deli type, \$35. 281-5498.

FIGURE SKATES - man's blk, size 8, 1 pr, \$7; size 8, 1 pr, \$5. Fred, Ext. 4407.

SOFA - 3 pc sectional, gold, excel. \$75. Fred, Ext. 4096.

ANKLE WEIGHTS - \$6; auto egg cooker, \$3; Kodak roll-film devel tank, \$3; foldable camping stool, \$3; The Updated Last Whole Earth Catalog, \$3; Polaron 1 gal picnic jug, \$2. Kathi, Ext. 2913.

MOVING - excel bedrm set w/new full size matt & box spring, \$170; china closet, \$180; old matt, \$5. Ext. 3817, 924-7780 after 7 pm.

DARKROOM STARTER KIT - Bookless, Ext. 4510.

SKI BOOTS - ladies , 2 pr, leather, buckle, sizes 5 & 6. \$5/pr. Ext. 2318.

SEARS DRYER - gas, good cond, \$70; bifold door for 2 dr opening, barely used, \$25. E. Kaplan, Ext. 2007, 751-1474.

FLASH GUN - Auto Strobonar 880 w/batt case, camera bracelet, sinc cord, filters. I. Meyer, Ext. 3038.

4 KING TUT TICKETS - March 8, 11 am, best offer. HR2-1734.

REFRIG/FREEZER - United 27 cu ft side-by-side, avocado, refrig 12 cu ft, freezer 15 cu ft. \$350. Ed, Ext. 4122, 363-2130 after 5:30.

90" ITAL PROVINCIAL SOFA - excel frame, needs re-finishing & upholstery. Best offer. 286-2749 after 4.

TURNTABLE - Philips Electronic G-312 w/Shure V15 type III cartridge, hardly used, mint cond. \$140. Ext. 4701, 271-2877.

TELETYPE KSR33 - portable, built-in model, rebuilt, excel cond. \$400. Gene, 751-6221.

TV CART - excel cond. \$6. 727-3608.

COLONIAL SOFA & ARM CHAIR - excel cond. \$150. Delores, 722-4625.

77 COACHMEN - 28' 5th wheel trailer & hitch. \$6900. 286-2565 after 5.

TRICYCLE - good cond, \$8; swag lamp, \$8; infant seat, \$6; baby carrier, \$8; bed rails, \$3; humidifiers - Sears, \$12, Devilbiss, \$5. Jim, Ext. 4151, 744-2514.

### Real Estate

Real Estate advertised for sale or rent is available without regard for the race, color, creed or national origin of the applicant.

### For Sale

PATCHOGUE - 4 bedrms, in-ground pool, D/R, eik, 16x24 L/R w/fp, 2-car gar, 1 acre wooded, immaculate, immediate occupancy. \$52,000. AT6-1285.

NORTH FORK - LI Sound, secluded, 3 bedrms, 3 baths, 2 fp, rustic ranch in heavily wooded area, lg pine kit, L/R, D/R & fam rm, beautifully landscaped w/16x32 pool. 727-7741 after 6.

RIDGE TOWN HOUSE - 2 bedrms, rent/sale, L/R, D/R, kitchen, appl, 1 1/2 baths, w/w, a/c. \$300/\$22,500. 473-1735, 698-1498.

SHOREHAM VILLAGE - lg Clarendon custom colonial, 4 bedrms, 2 1/2 baths, den w/fp, eik, formal D/R, 1 1/4 wooded acres, deck, walk to tennis, beach, country clubs. \$80,000 reduced. 744-1935.

COLUMBIA CO - 90 mi from NYC. mobile home w/ extension on 3/4 acre, now rented net \$125, will hold mortgage, low down payment. (914) 969-5619 after 6.

LAKE PANAMOKA - tudor look ranch, Lake Panamoka rights, lg rms, 3 bedrms, w/w, appl, fence, shed, s/s. 929-8617.

AQUEBOGUE - 3 bedrms, 1 bath, L/R, full bsmt, 1-car gar, landscaped, auto irr sys, 7 1/2% assumable mort. \$49,000. 722-3692.

MASTIC BEACH - long-line ranch, 2 over-sized bedrms, cabinet-lined kit, formal D/R, den, full bsmt, baseboard heat, 1/4 acre. \$27,000. 281-5498.

EAST MORICHES - 2 bedrms, full bsmt, appl, 100x 200 prop, low taxes, 11 mi to Lab. 878-0974 or Ext. 3771.

ROCKY POINT - 2 bedrms, 2 floor house, on 1/2 acre, 1 mi from beach, low taxes, gar. \$34,000, principals only. Ext. 2865, 744-4781 after 6.

E. PATCHOGUE - must sell, 3 1/2 yr custom built over-sized 9 rm wide ranch, prime area, 4/5 bedrms, 2 1/2 baths, huge eik, D/R, 2 dens, 2 garages, appl, carpeting, beautifully landscaped. 289-0443.

BROOKHAVEN HAMLET - 3 bedrm ranch, att gar, fin bsmt w/bar & 2 fp, screened porch, new appl, beautifully landscaped near Bay. 212-472-6713 or 212-831-6157 after 6.

SHOREHAM - low taxes, custom colonial, 3 bedrms, 1 1/2 baths, den w/fp, eik, formal D/R, full bsmt, 2-car gar, patio, 0.43 acre landscaped, deeded beach rights. \$64,990. 744-1081 after 3.

LAKE PANAMOKA - cape cod, 2-car gar, cottage, fp, 100x100, low taxes, 3 bedrms, 1 1/2 baths, 1/2 block from Lake, many extras. \$38,500. 929-4202.

EAST MORICHES - 3 bedrms, heated sun porch, bsmt, 2-car gar, fenced backyard, 140x100, extras. \$37,500. 878-4171 eves/weekends.

WADING RIVER - sm 3 bedrm house for sale/rent. 929-6763.

### For Rent

E. PATCHOGUE - 3 1/2 rm apt, no pe's, priv ent. \$215/mo incl heat. 475-3597.

WADING RIVER - 2 rms & bath, util incl. After 3 pm, 929-6293 or 929-4662.

E. PATCHOGUE - 3 bedrm ranch on Durkee Ln, furn or unfurn. \$350+ util, security. 734-6633 nights.

EAST PATCHOGUE - La Bon Vie II, 3 rm apt to sublet, adults only, avail April 1. H. Morris, 475-2260.

BROOKHAVEN - 2 story, 4 rm furn apt, new kit, prime location, 20 min from Lab, South Shore, sep ent, util incl, security. 286-2450, 5-7 pm or write. Box 277, Brookhaven, NY 11719.

VT CHALET - beautifully furn, X-C skiing trails, near Bromley, Magic & Stratton Mtns. 757-5599 after 4.

MILLER PLACE - 3 rm apt, priv ent, semi-furn, avail immediately. \$250/mo incl util. 732-9324.

SOUND BEACH - 2/3 bedrm house, 1 1/2 baths. \$400/mo incl all util. Mary, Ext. 2926, 281-0268.

VERMONT - 3 bdrms, 2 baths, gar, fp, fully equipped, ski x-country or downhill. 732-6499 after 5:30.

MASTIC BEACH - 2 rm apt w/full bath, priv ent. \$185/mo w/util, 1 mo security. 281-8144.

### Wanted

CASE FOR MINOLTA SRT 101 - must be good cond. Ralph, Ext. 2591.

ICE SKATES - boy's size 5 1/2 to 6 1/2. Ted, Ext. 4163/4126.

LABELS - Campbell's soup or beans, V8 & Franco-American, for school district to trade for free books & supplies. T. Gangwer, Bldg. 815.

12" WOOD LATHE - Ext. 2113.

PORT-A-CRIB - "like new" cond. Laura, Ext. 2625.

VW LUG WRENCH - Jay, Ext. 3516 T, TH, F.

HARD-TOP - for 1963 conv Corvette. Ext. 3654.

WASHER & DRYER - in good cond. Louisa, Ext. 4207, 736-2094 after 5:30.

USED TV - color, b/w, wanted by students sharing house, cheap. R. Davis, Ext. 7923, 981-2681 eves.

HOUSECLEANING JOBS - let me make a clean sweep of your house. 924-4496 after 6.

2-3 BEDRM APT OR HOUSE - needed by BNL staff from 3/10/79 to 9/30/79, near BNL preferred. Anne, 878-8905.

CHILD CARE - for 3 yr old in Shoreham, my home, 2-3 days/wk, own transp. 744-4965 eves.

AU PAIR/MOTHER'S HELPER - 18 yr old German girl seeks family giving room & board in exchange for pay or work. Ext. 4253.

TRAINS - Lionel, any "0" gauge or "027" gauge, cars, track & equipment. Frank, Ext. 4212.

### Car Pools

S. HUNTINGTON - LIE Exit 49, Hunt Sta, 1 person needed to fill car pool. George, Ext. 2365, 423-5436.

MASSAPEQUA PARK AREA - need 2 persons w/ reliable autos to form car pool, my auto is 1978 VW Rabbit. G. Uneberg, Ext. 3519, 541-2657.

RIVERHEAD - 1 or 2 drivers needed to compl existing 3-member car pool. Pat, Ext. 4519.

### Lost & Found

FOUND - young male Weimaraner 1/30, Wading River. 929-6634.

FOUND - broken Star Wars watch outside Hot Lab on Tues, Jan 30. Joanna, Ext. 4365/4563.

### Services

TUTORING - experienced elem school teacher will tutor. \$7.50/hr my home, \$10/hr your home. 399-4929 after 5:30.

FIREWOOD - \$95/cord split 4'x16'x18"; \$50/1/2 cord split 4'x8'x16", delivered. 399-4988 after 6.

POWER SQUADRON "BASIC BOATING COURSE" - started Tues, Feb 6 at 7:30, William Floyd High School. It's not too late to attend.

TV REPAIR - free estimate on all carry-ins. Frank Di-Crescio, Ext. 4597 lunchtime or 399-1803 eves.

HOUSE CLEANING - experienced, reliable, references. 399-0039 eves after 6.

EXPERT TUTORING - certified teacher, reading, math to grade 12, French, German, English, in my home. \$10/hr. 941-4328.

FIREWOOD - seasoned oak, 4'x8'x18" logs, \$50 delivered; 4'x16'x18", \$90. 924-4284 after 5:30.

TYPING ALL MATERIAL - Spanish teaching, translations English-Spanish. Ext. 3076.

TAXES - prepared by tax consultant, your home or mine. Reasonable. John, 732-2472.

THESIS & PUBLICATIONS ILLUSTRATED - med, chem, bio, electro-mechanical - drawings, charts, schematics, wiring diagrams, instrumentations & lettering professionally executed. Reasonable. Yani, Ext. 2514.

### Classified Ad Policy

Deadline is 12 noon Monday for publication Friday of the same week.

- The Brookhaven Bulletin's classified section may be used only by active and retired Laboratory employees.
- All items for sale or rent must be the advertiser's property.
- Ads for material acquired for resale in association with a full or part-time business cannot be accepted.
- Firearms offered for sale or trade may not be brought on site.

- Ads not carried because of space restrictions will be held for publication in the next issue.
- Ads are run only once and must be resubmitted if they are to be repeated.

7. Property for sale or rent cannot be accepted on this form. Special Real Estate Ad forms are available at the office of the Brookhaven Bulletin, 40 Brookhaven Avenue.

- For Sale: Autos & Auto Supplies     For Sale: Miscellaneous     Lost & Found     Wanted  
 For Sale: Boats & Marine Supplies     Car Pools     Services

Please print your ad below in 15 words or less using one word per block. Include name and phone number to call.


Note: The following must be completed for your ad to appear.

NAME (Please Print) .....

Employee's Signature ..... Life No. .... Ext. ....

Send to: Brookhaven Bulletin, Building 460, 40 Brookhaven Avenue (Ext. 2345).