



Doug Humphrey

From left, Norman Rohrig, Stephen Marino and Robert Mills, Safety and Environmental Protection Division, oversee transport of the RARAF Van de Graaff accelerator to Nevis Labs. Including the tank, 35 trailers full of equipment and shielding were recently moved there. Management of the facility will be taken over by Columbia University.

RARAF Moves To Nevis

RARAF has been crated and shipped off to a new home. Because of general space problems at the Lab, the Radiological Research Accelerator Facility has been moved to Nevis Labs in Irvington, New York, and its management will be assumed by Columbia University, which operates Nevis. RARAF had been housed in the old Cosmotron building, 902.

The facility was used to study effects of ionizing radiation on living systems. To some degree, everyone is exposed to man-made radiation from such sources as dental and medical X-rays. For selected groups of people like radiology technicians, power reactor personnel and cancer therapy patients, exposure can be in larger amounts and various qualities.

A Unique Facility

RARAF was established at the Lab in 1967 primarily through the efforts of Harald Rossi, Director of the Radiological Research Laboratory at Columbia, and Victor Bond, then Chairman of the BNL Medical Department. They had collaborated on several experiments investigating effects of neutron irradiation on biological systems using various accelerators dedicated to physics research. Accelerator time allocated to them was typically at difficult hours such as on Sunday morning between midnight and 8 a.m. Simple, coarse experiments could be accomplished, but it was not easy to do systematic, careful investigations. What was needed was an accelerator facility dedicated to radiobiology and radiological physics investigations.

Section by section, a facility was pieced together. When the Cosmotron was decommissioned, the 4MV Van de Graaff injector was preserved. Accelerator modification and construction of the two-level irradiation cave and associated beam lines began in June 1967. Between 1970 and 1973, a new console and four additional beam lines were developed and installed. From 1973 to 1974, the dual beam irradiation facility was developed. Track segment irradiations with the vertical charged particle beams began in 1975.

During those years, RARAF was used by collaborators from the BNL Biology and Medical Departments, researchers from Columbia, and several outside user groups.

In 1978, management of RARAF

was transferred to the Safety and Environmental Protection Division, where studies in radiological physics and theoretical aspects of radiobiology were already being done by John Baum and coworkers.

A scientific committee was formed to advise Charles Meinhold, Division Head of S&EP, on future direction of the facility. Under the division, RARAF continued to be a unique national facility dedicated to radiobiology. RARAF staff, including Norman Rohrig, Stephen Marino, Robert Mills and Barry Karlin, operated the facility and provided precision dosimetry services for user radiobiologists.

At Nevis Lab

In its new home, RARAF will be managed by Rossi. Scientists at Columbia are very familiar with the machine, since they were primary users while it was located at BNL.

Research in radiobiology and radiological physics will continue to be important. It is relevant to energy scenarios that include fission, fusion, and even the burning of coal.

Weekend Tour

Visitors to the Lab this weekend will be able to tour the recently completed Brookhaven House, an innovative, energy-efficient one-family home. The Brookhaven House combines a number of energy-conserving concepts which will result in heating costs that are a small fraction of those encountered in typical homes. Only widely available building materials are used, and the construction techniques are currently familiar to builders.

DEE staff Anthony Hendrick, Homayun Ghaffari and William Graves will give lectures illustrated with slides and answer questions on the house. Talks are scheduled four times hourly both Saturday and Sunday, beginning at 11:30 a.m.

Employee Tour

Those who missed seeing the Brookhaven House last week because of the Jewish holidays, are invited to tour the house between the hours of 12 and 2 p.m., on Wednesday, Sept. 24.

New Pay Structure Announced

—by Laboratory Director George Vineyard

It has been a little more than six months since the Schwarzschild Committee made its recommendations to me. As reported in the Brookhaven Bulletin last November, the Committee was appointed to examine the Laboratory's salary and wage structure for non-scientific staff, to recommend changes needed to correct inequities and reestablish our competitive position in the market, and to look into employee morale. The Committee identified three major areas of concern: pay inequities, salary structure and review procedures, and communications.

New Salary Structure

In response to the Committee's findings regarding pay inequities and other problems related to salaries and wages, a new salary structure will be put into effect as of October 1, 1980 for non-scientific staff who are not in bargaining units. The structure was developed by the Personnel Office, taking into account the Schwarzschild Committee's report and using extensive input from Laboratory departments and from an outside management consultant.

The key to this new structure is the placing of employees into the proper job classifications and corresponding salary rates by careful evaluation of each individual. Starting in July the departments and divisions have conducted reviews of their employees in accordance with the new structure. For the past several weeks a Personnel Review Committee (Janet Whitehead, Chairperson; Virginia Brown, Robert D'Angio, Richard Schonberg, and Gail Williams) has been meeting with representatives of all departments and divisions to reach final decisions on all individuals.

The results of this review are to be effective October 1, and will be announced to employees on or about September 29. At that time, Laboratory employees affected by the new program will receive a booklet describing the new salary and wage structure.

Major Features

This completely new program provides the following: 1) less overlap between pay ranges; 2) more definitive recognition of merit; and 3) more significant increases at the time of promotion from one classification to another. This year, because the new system is first being put into place, the procedures have been modified. In lieu of market adjustments to salary ranges, all Laboratory employees affected by the new program, with few exceptions, will be given an 8.2% salary increase. At the same time, additional increases will be given where necessary to place them within the newly established ranges of their classifications.

Another major feature of the new system is that all pay ranges will be compared annually to rates for equivalent jobs in the outside labor market, and appropriate adjustments will be made to the BNL ranges. When a particular salary or wage grade is increased on this basis, all satisfactory employees in the grade will be increased accordingly. In addition, the annual Personnel Review will allow the movement of employees within the ranges in recognition of: 1) meritorious performance; 2) growth in job skills toward the proficiency level; and 3) promotion to a higher classification. These procedures are designed to assure the system's continued competitiveness in the outside labor market and the proper placement of individuals within the structure.

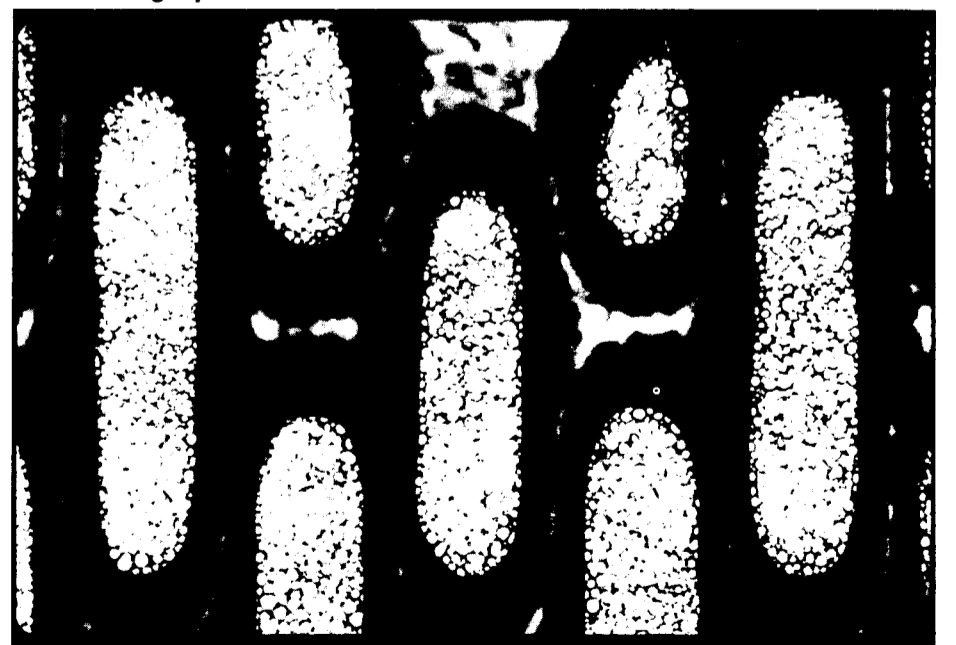
Job Classifications

The introduction of the wage and salary program has been a massive effort. A major portion of Laboratory job classifications has been reassessed and redefined, but it was not possible to complete a reassessment of all jobs prior to the present review. This work will continue.

With respect to salary adjustments, the Laboratory has committed a substantial amount of money for this structure.

(Continued on page 2)

BNL Photographer Wins Nikon Prize



Since you'll never guess, we'll tell you: this is a photomicrograph of a titanium grid used to support specimens in electron microscopy. Taken by Bill Marin in Photography and Graphic Arts, the image recently won second prize in the 1980 Nikon Photography Contest, photomicrography division, a prestigious, world-wide competition. Marin wins a \$750 Nikon F2A camera and will have his entry displayed at the awards ceremony at the Nikon House in New York on October 27. The photograph, which is bluish black with a bright red background, will also be circulated in many photography magazines. Marin won sixth prize in the Nikon Contest four years ago, and received Honorable Mention last year. He's been the Lab's photomicrographer for the past seven years.

Reports Available

The following reports are now available to the Laboratory Staff and to Affiliates of the DOE, AUI, and NRC. Others may purchase the reports from the National Technical Information Service, U.S. Department of Commerce, 5285 Port Royal Road, Springfield, Virginia 22161. Staff members should call Ext. 3484.

BNL 51056 \$4.50
The Brookhaven Integrated Energy/Economy Modeling System and Its Use in Conservation Policy Analysis. P.J. Groncki and W. Marcuse

BNL 51115 \$15.00 per volume
Vol. 1 & 2
Proceedings of the Symposium on Heavy Ion Physics from 10 to 200 MeV/AMU. (Held at Brookhaven National Laboratory, July 16-20, 1979). J. Barrette and P.D. Bond, Editors

BNL 51118 \$11.00
Health Effects of Photovoltaic Technology. (Proceedings of a Workshop held at Brookhaven National Laboratory, Upton, Long Island, New York 11973, July 31 - August 2, 1979). L. Stang, M. Dienes, and D. Bohning, Editors

BNL 51134 \$15.00
Proceedings of the 1979 Linear Accelerator Conference. R.L. Witkover, Editor

NUREG/CR-1289 BNL-NUREG-51143
Evaluation of Isotope Migration - Land Burial. Water Chemistry at Commercially Operated Low-Level Radioactive Waste Disposal Sites. Status Report Through September 30, 1979. A.J. Weiss and P. Colombo

BNL 51146 \$4.00
Air Sea Interaction Experiments (1976) at an Offshore Platform Near Atlantic City, New Jersey. S. SethuRaman, W.A. Tuthill, and J. McNeil

BNL-NCS-51152 \$6.00
Evaluation of Natural Chromium Neutron Cross Sections for ENDF/B-V. A. Prince and T.W. Burrows

NUREG/CR-1356 BNL-NUREG-51156
High Cycle Fatigue Behavior of Incoloy 800H in a Simulated High-Temperature Gas-Cooled Reactor Helium Environment. P. Soo, et al

BNL 51165 \$5.25
Program Summaries for 1979 - National Center for Analysis of Energy Systems. L.E. Ruff and B. Manowitz

BNL 51166 \$6.00
Staff Roster for 1979 - National Center for Analysis of Energy Systems. L.E. Ruff and B. Manowitz

NUREG/CR-1402 BNL-NUREG-51177
Advanced Reactor Safety Research Division. Quarterly Progress Report. October 1 - December 31, 1979. A.J. Romano, Editor

NUREG/CR-1403 BNL-NUREG-51178
Water Reactor Safety Research Division. Quarterly Progress Report, October 1 - December 31, 1979. A.J. Romano, Editor

BNL 51183 \$5.25
Hydrothermal Cements for Use in the Completion of Geothermal Wells. Final Report. D.K. Curtice and W.A. Mallow

NUREG/CR-1439 BNL-NUREG-51187
A One-Dimensional Neutron Kinetics Model for the THOR Code. Final Report. R.D. Lawrence and R-T. Chiang

BNL 51195
Proceedings of the International Workshop on the Effects of Acid Precipitation on Vegetation, Soils, and Terrestrial Ecosystems. (Held at Brookhaven National Laboratory, June 12-14, 1979). L.S. Evans and G.R. Hendrey, Editors

NUREG/CR-1514 BNL-NUREG-51220
Properties of Radioactive Wastes and Waste Containers. Quarterly Progress Report. January - March 1980. H.K. Manaktala and A.J. Weiss

NUREG/CR-1357 BNL-NUREG-51157
Heat Removal Characteristics of Volume Heated Boiling Pools with Inclined Boundaries. G.A. Greene, et al

BNL 51158 \$5.25
Fuel Cell Applied Research: Electrocatalysis and Materials. Quarterly Report, April 1 - June 30, 1979. S. Srinivasan, et al

BNL 51159 \$6.50
Evaluating and Selecting Options for Oil Refit Programs. R. Hoppe, et al

BNL 51163 \$5.25
Staff Roster for 1979 - Energy Technology Programs.

NUREG/CR-1513 BNL-NUREG-51219
Evaluation of Isotope Migration - Land Burial. Water Chemistry at Commercially Operated Low-Level Radioactive Waste Disposal Sites. Quarterly Progress Report, January - March 1980. K.S. Czyscinaki, et al

Salary Structure (Cont'd)

view and is giving the maximum allowable total increase under the President's wage guideline regulations. This has allowed us to insure that all employees have been placed in their proper job classifications and, as a result, many employees will receive substantial salary adjustments.

However, it is true that not all employees, though placed in their proper classifications, will reach the level of pay within the range for their classification that is consistent with their job proficiency. This is because that level may involve too large a salary increase to achieve in one step. We estimate that it may take us two more salary reviews (through October 1982) to have all employees reach their proper pay placement within their salary range.

Scientific Staff

The existing salary scales of the scientific staff have been reviewed separately by a special committee chaired by Jerry Hudis. The recommendations of this committee have also been taken into account as far as possible in the October review. Further information on the Hudis Committee's recommendations will be published at a later date.

Retiree



Mort Rosen

James Amaro, Technical Associate in the Department of Energy and Environment, will retire today. He has been at the Laboratory more than 33 years. Amaro resides in Selden and plans to travel for a year. After that, he may stay on Long Island, or "just follow the sun."

Classic Cop-Outs

The following are reported to be actual written statements submitted to the police on report forms. The drivers were instructed to give brief statements on the particulars of the accident in their own words. Here are some examples:

Coming home, I drove into the wrong house and collided with a tree I don't have.

I thought my window was down, but found it was up when I put my hand through it.

A pedestrian hit me and went under my car.

The guy was all over the road, I had to swerve a number of times before I hit him.

In my attempt to kill a fly, I drove into a telephone pole.

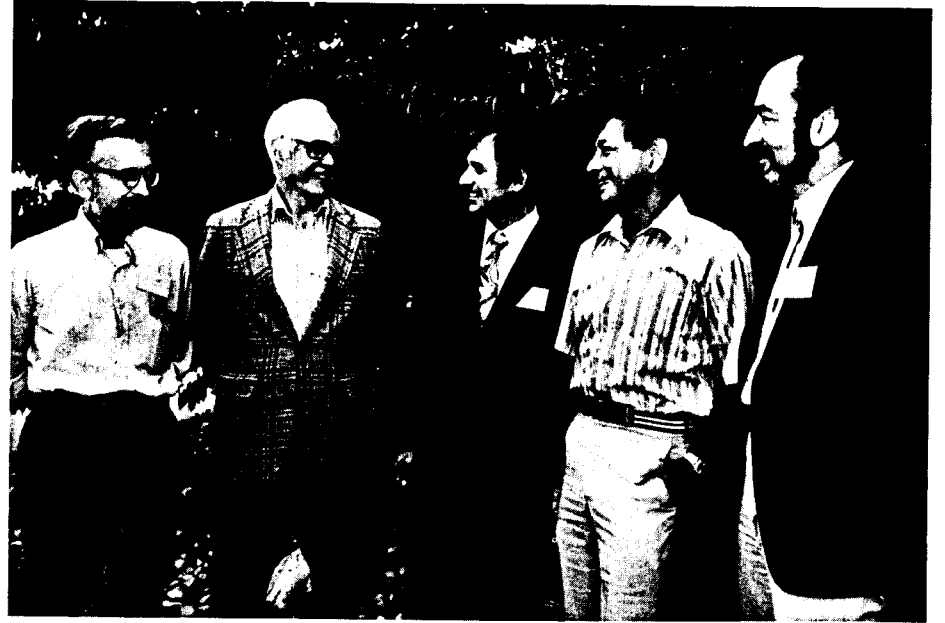
I thought I could squeeze between two trucks when my car became smashed.

I had been shopping for plants all day, and was on my way home. As I reached an intersection a hedge sprang up obscuring my vision. I did not see the other car.

I had been driving my car for forty years when I fell asleep at the wheel and had the accident.

I was backing my car out of the driveway in the usual manner, when it was struck by the other car in the same place it

NSLS Workshop



BNL hosted a DOE-sponsored "Workshop on Atomic Physics at the National Synchrotron Light Source" on September 15-17. Conference participants, about 45 scientists from the United States, explored the possibilities for atomic physics research at the NSLS. A primary product of the workshop was a report on interesting theoretical topics and experimental objectives in this largely unexplored field. Some conference attendees (from left) were Keith Jones (BNL), leader of the atomic physics research team; Ted Kruse (Rutgers) and Val Kostroun (Cornell), members of the research team; Martin Blume (BNL), NSLS Scientific Program Head; and Rolf Sinclair (NSF), Atomic and Molecular Physics Program Director.

—Photo by Rosen

Safety Alert

Approximately 600 infant toys known as "crib exercisers" or "baby chains" are being recalled because they may pose a strangulation hazard to infants. The recall is being conducted voluntarily by the toy's importer, Play Spaces International, of Waltham, Massachusetts, in cooperation with the U. S. Consumer Product Safety Commission.

The toy consists of an elastic cord strung with 11 colored wooden rings and balls and is intended to be suspended over the infant after being strung across from one crib railing to the other.

No injuries or deaths involving this toy have been reported to the firm or to CPSC. But the CPSC staff believes that parents might position it close enough to an infant so that he or she might become entangled in the elastic and strangle.

The exercisers have been sold in retail stores nationwide for approximately \$7.50 each. They are sold in plastic packages labeled "Schowanek" and "Made in West Germany," and the package may be stamped with model number 10890.

Consumers should return the toys to the place of purchase for a full cash refund.

To Dispel A Myth

Older people are often portrayed in children's books in a negative or stereotyped manner - as witches, scary old men, or recluses. Recent research studies have shown that the way children view older people is highly influenced by what they read.

The National Institute on Aging has published a children's book to reach small children with new and positive images of older people. One of the eleven National Institutes of Health, the NIA conducts and supports research to find new information about the aging process and the problems confronting the elderly. The institute is active in exposing, and where possible, reversing, society's myths and misconceptions about old people.

A Treasure Hunt was written for the institute by Christopher Wilson and illustrated by his wife, Dagmar Wilson. It is the story of Jan, Janet, and their playmates who go on a hunt for treasure - and discover more. Seeing Jan and Janet's apparent fear of old people, several elderly neighbors plan a treasure hunt to become better acquainted with the children. Clues are left at the old people's workshops and homes to guide the hunters to their treasure.

Single complimentary copies are available as supplies allow from NIA/Expand Associates, Inc., 8630 Fenton Street, Suite 508, Silver Spring, Maryland, 20910. Copies of the book, GPO publication number 017-062-00120-1, can also be purchased for \$2.25 each from Superintendent of Documents, U.S. Government Printing Office, Washington, D.C., 20402, Attention: Public Documents Dept.

NYC Train Trip

The Hospitality Committee is planning a group railroad trip to the city on Wednesday, October 1. Departure will be at 7:55 a.m. from the Patchogue LIRR station. Round-trip fare for adults is \$3.25, children under six years ride free.

Reserve a ticket by sending your fare through the U.S. mail to P.O. Box 322, Upton, New York 11973, no later than Thursday, September 25. Make checks payable to "Brookhaven National Laboratory." Your tickets will be given to you on the train. Refunds will be made only if cancellations are received by the Friday preceding the scheduled trip.

BROOKHAVEN BULLETIN

Published weekly for the employees of
BROOKHAVEN NATIONAL LABORATORY

BERNICE PETERSEN, Editor
MONA S. ROWE, Assistant Editor

40 Brookhaven Ave., Upton, N.Y. 11973
Telephone (516) 345-2345

CARL R. THIEN, Public Relations Officer

BERA Awards

The policy of the BERA Participation Awards Program was revised, effective October 1, 1979. The great number of questions directed to the Recreation and Film Service Offices during the past months regarding the program indicates that many award winners are not aware of the new procedures. Therefore, it seems appropriate at this time to repeat excerpts from the announcement published in the Brookhaven Bulletin on September 28, 1979.

1. Participation cards are awarded only BERA members 18 years of age or older.
 2. Participation cards are not transferable.
 3. Participation cards have an established value and, similarly, merchandise prizes are price tagged.
 4. Participation card value and merchandise prices are subject to revision in accordance with vendor's price changes.
 5. Participation awards may be redeemed at the BERA Film Service Office between 9:00 a.m. and 1:00 p.m., Monday through Friday by presenting enough cards or a combination of cards and cash to meet the tagged price of the item, with a minimum of one card required for each redemption ..."
- Current Card Value: \$2.00
Current Merchandise Prices:
- | | |
|-------------------|--------|
| Running Shorts | \$4.00 |
| Pullover Sweater | 8.00 |
| Hooded Sweatshirt | 8.00 |
| Windbreaker | 10.00 |

IBEW Meeting

Local 2230, IBEW will hold its regular monthly meeting on September 25, 1980, at 8 p.m. in the Knights of Columbus Hall, Railroad Ave., Patchogue. There will also be an afternoon meeting at 2 p.m. for shift workers in the Union office at 31 Oak Street, Patchogue. On the agenda will be regular business, committee reports and the President's report.

Arrivals & Departures

Arrivals

Cheryll A. Christie.....Safety & Environ. Prot.
Michael A. Giammarinaro.....Medical
Herbert W. Hamber.....Physics
Craig S. Hartley.....Nuclear Energy
David J. Jhirad.....Energy and Environ.
Lance L. Junker.....Reactor
Martin C. Kaplan.....Physics
Francis J. McNeill.....Energy and Environ.
Sathyavathi Ramavattaram.....Nuclear Energy
Jerome A.G. Russell.....Medical

Departures

Eileen A. Chilton.....Biology
Allan G. Goldman.....Medical
Nathaniel A. Greenhouse, Jr.....S. & Env. Prot.
Hans Grimm.....Physics
Imtiaz K. Madni.....Nuclear Energy
Yvonne Oden.....Nuclear Energy
James C. Timmreck.....Physics

CREF Values

September	44.60	October	41.18
November	42.56	December	43.19
January	45.37	February	44.59
March	40.33	April	41.82
May	43.70	June	44.81
July	47.84		
August \$48.04			

Duplicate Bridge

Duplicate bridge games will resume on October 2 at 7 p.m. in the Brookhaven Center Dining Room. Players will meet every Thursday, except on holidays, until the last week of March, 1981. Details are available from Bharat Bhatt, ext. 2966, or Colin Durston, ext. 2598.

Swimming Pool

Admission Fees and Schedule

Fees:

Season Tickets-Valid 9/2-11/30/80 (season ticket fees are not prorated)	
Individual Membership	\$15.00
Family Membership	\$20.00

Daily Admissions

Employee/Family Member	\$1.25
Guest	\$1.75

Schedule:

Monday through Friday

- 11:00 a.m. to 1:30 p.m.-employees only
- 5:00 p.m. to 9:30 p.m.-employees/families/guests

Saturday and Sunday

- 1:00 p.m. to 6:00 p.m.-employees/families/guests
- The pool is closed on all Laboratory holidays.

Guest Ruling:

One guest per employee is permitted at the pool. Advance arrangements for additional guests (but not more than five at any one time) may be made at the Recreation Office in Personnel.

Volleyball

There will be a pre-season meeting of volleyball board members and all captains on Thursday, September 25 at noon in Room D of Berkner Hall.

Bowling

Purple & White League

Walt Milian started off the season with high series and high game for the men with a 224/198/201-623. For the women, Mary Grace Meier bowled a 206/188/172-566. Other good games were bowled by Ed Sperry 213, Carl Murray 211, Dick Adams 205, Gene Hassell 202, Ed Meier 200, Gerri Riker 181, Pat Manzella 181, Nancy Erickson 180.

Green League

The Sparks took 11 from the Blue Jays with J. Cochrane bowling games of 229/244 for a 628 scratch series. The Trouble Shooters took 11 from Isa Team, Phoubars managed 8 from the Old Timers II, and the Pinball Wizards took 8 from the Light Source with T. Prach bowling a 213.

Red League

The 76'ers won 8-3 over the Designers with J. Connelly bowling a 223/616 gross, R. Larsen 220/609 gross. The Old Timers won 8-3 against the Freon Loaders with J. Fontana grossing 616. The Strangers took the Sandbaggers 8-3. C. Bohnenblusch bowled a 250, R. Taylor 613 gross. This Isa Team lost 11 to the Trouble Shooters. W. Kollmer had a 205/629 gross, M. Iarocci 202/612 gross.

Pink League

High game for the first night of bowling goes to Fran Nusz with a 194.

S e m e s t e r s



The 24th semester of the Brookhaven Semester Program began on September 2. The participants are (from left) Daryl Marshall (Mississippi Valley State College) who will work with Bob Chrien, Physics; Cynthia Rankin (Tougaloo College) assigned to Walter Sevia, DEE; Robert Elliott (Alcorn State Univ.) is advised by Arnold Peskin, App. Math.; and Cynthia Dalcourt (Alcorn State Univ.) works with Manny Hillman, DEE. In addition to their research during the next 16 weeks, the students will be instructed in Topics in Mathematics by Sidney Heller, Introduction to Scientific Computing by Ronald Wittlock, Modern Physics by Richard Fernow, and Electricity and Magnetism by Craig Thorn.

—photo by Humphrey

Adult Swim Lessons

Today is the last day to register for adult swimming lessons which will begin on Wednesday, September 24.

Lessons are open to all on-site employees and their adult dependents and will be given each Wednesday at 5:15 p.m. for nine consecutive weeks.

Those interested may sign up at the pool today between 11:00 a.m. and 1:30 p.m. or 5:00 and 9:30 p.m. A fee of \$15 is due at the time of registration.

Cooking Exchange

Some delicious Greek delights, including Avgolemono Soup, Dolmathes, and Galatoboureko (a creamy wheat pie) will be demonstrated at the next Cooking Exchange meeting. Please join us on Wednesday, September 24 at 12:30 p.m. in the Recreation Building.

There is a charge of \$1 per adults and babysitting is provided for 25¢ per child.

For further information call Sharon Galayda (821-0644), or Ruth Fernow (928-8465).

Cafeteria Menu

Week Ending Septembr 26, 1980

Monday, September 22

French onion soup	(cup)	.45
	(bowl)	.55

Corned beef and cabbage	1.50
Grilled chopped steak w/sauteed onions and 1 veg.	1.50

Hot Deli - Pepperoni, egg, onion and pepper hero	(on bread) 1.40
	(on roll) 1.50

Tuesday, September 23

Cream of spinach soup	(cup)	.45
	(bowl)	.55

Roast top round of beef w/1 veg.	1.50
Shrimp and crabmeat quiche and 1 veg.	1.50

Hot Deli - Pastrami	(on bread) 1.50
	(on roll) 1.60

Wednesday, September 24

Chicken vegetable soup	(cup)	.45
	(bowl)	.55

Baked lasagna and 1 veg.	1.40
Swedish meatballs on noodles	1.45

Hot Deli - Roasted fresh ham steak sandwich	(on bread) 1.45
	(on roll) 1.55

Thursday, September 25

Navy bean soup	(cup)	.45
	(bowl)	.55

Roast chicken and 1 veg.	1.50
Stuffed cabbage roll and 1 veg.	1.45

Hot Deli - Philadelphia style steak sandwich	1.55
--	------

Friday, September 26

Seafood chowder	(cup)	.50
	(bowl)	.60

Yankee pot roast and 1 veg.	1.50
Broiled fillet w/1 veg.	1.45

Hot Deli - Roasted turkey breast	(on bread) 1.50
	(on roll) 1.60

Classified Advertisements

Placement Notices

The Laboratory's placement policy is to select the best-qualified candidate for an available position, with consideration given to candidates in the following order of priority: (1) present employees within the department, with preference to those within the immediate work group; (2) present employees within the Laboratory as a whole; and (3) outside applicants.

The determination of the best-qualified candidate for available positions will be based upon education, experience and other job-related criteria. Such factors will be evaluated and measured against the demonstrable requirements of the available vacancy, as well as the Laboratory's Affirmative Action objectives.

The Laboratory is committed to a policy of Equal Opportunity in its selection and placement of personnel. Its objective is equality of opportunity in employment, training, and promotion without regard to race, color, religion, national origin, sex, age or handicap.

Each week, the Personnel Office lists new personnel placement requisitions. The purpose of these listings is, first, to provide open placement information on all nonscientific staff positions; second, to give employees an opportunity to request consideration for themselves through Personnel; and, finally, for general recruiting purposes. Because of the priority preference policy stated above, each listing does not necessarily represent an opportunity for all candidates. As a guide to readers, the listings are grouped according to the anticipated area of recruitment, as indicated below. Except when operational needs require otherwise, positions will remain open for one week following publication date.

For further information regarding a placement listing, contact the Personnel Placement Supervisor, Ext. 2882.

LABORATORY RECRUITMENT: Opportunity, for present Laboratory employees.

1459. SECRETARIAL POSITION - Requires AAS or its equivalent in secretarial science, good secretarial and communication skills and organizational abilities. Shorthand would be helpful as would technical typing experience. ISABELLE Project Office - Accelerator Department.

1460. LAMP CLEANER - Plant Engineering Division.

1461. LABORATORY CUSTODIAN - Plant Engineering Division.

1462. LABORER - Plant Engineering Division.

1463. BUILDING AND GROUNDS UTILITY WORKER - Plant Engineering Division.

1464. DRIVER - Plant Engineering Division.

OPEN RECRUITMENT: Opportunity for present Laboratory employees and outside applicants.

1465. SENIOR STATIONARY ENGINEER - Requires demonstrated experience in the maintenance, repair, and operation of high pressure boilers firing #6 fuel oil. Current stationary or marine engineer license is highly desirable. Plant Engineering Division.

Autos & Auto Supplies

TIRE - H78-15 snow mounted on Ford truck wheel. \$10. Glenn, 289-0413.

69 CHRYSLER - sta wgn, a/t, a/c, p/b, p/s, mint int, good running, needs radiator. 928-8428.

74 CB360 - 3,000 mi on rebuilt engine, crash bar, lugg rack, sissy bar, 8 in. hi-bar, elec start, new batt, very clean. \$1,000. Ext. 4612.

72 VW BUS - sunroof, extras, good cond. \$1,500. Ext. 4238 or 286-3509.

WHEELS - (2) chrome slotted wheels, w/lug nuts 14". \$50. Bob, 289-0413.

69 OLDS - Delta 88, a/t, a/c, new tires, running cond. Best offer. 724-4514.

78 YAMAHA - 400 SX, clean, 11,000 mi, mag wheels. George, Ext. 7672 or 878-4383.

71 CHEVY - Monte Carlo, a/c, am/fm, good mpg, all extras, very good eng. \$1,000. Ext. 2115 or 744-0146.

66 MUSTANG - 6 cyl, 200 ci, auto, new brakes, exhaust sys, starter, carb, solenoid, voltage reg, int restored, ext good. \$1,500. Saxon, 929-8105 or 929-4701.

