

## NSLS Phase II Dedicated During Users Meeting

In the 40th anniversary year of the observation of synchrotron light and at the 1987 Annual NSLS Users Meeting, the Phase II building addition of the National Synchrotron Light Source (NSLS) was dedicated on September 21.

Phase II adds 57,600 square feet to the existing NSLS building, Bldg. 725. Of this, 29,000 square feet was added to the experimental floors of the x-ray and vacuum ultraviolet (VUV) synchrotron rings. The experimental floor expansion includes more beam line space, four laboratories for facilities' users, an angiography suite, two darkrooms and a users' lounge. As well, a tunnel was built connecting Bldg. 725 to the basement of Instrumentation, Bldg. 535, where some NSLS support groups are housed.

On the second floor, 28,600 square feet of office space were built, including 4,650 square feet to be completed by the end of the year. When the NSLS staff now stationed on the third floor of Physics, Bldg. 510, move into their new quarters in Bldg. 725, their former offices will be turned over to NSLS users.

Phase II also includes construction of five new experimental beam lines: four on the x-ray ring and one, an infrared beam line already operating, on the VUV ring. The four new x-ray beam lines will be commissioned following the completion in 1988 of the ongoing, scheduled, x-ray ring shut-down.

At the NSLS Users Meeting, September 20-22, some 275 attendees were apprised of the progress and schedule for the installation of Phase II beam lines. Those at the meeting were also shown preliminary results from the new VUV beam line and informed of research results on existing beam lines.



Speaking at the dedication of Phase II of the National Synchrotron Light Source (NSLS) is BNL Deputy Director Martin Blume. Also on the platform are: (from left) NSLS Associate Chairman Jules Godel, head of the Phase II construction project; Chairman of the NSLS Users Executive Committee Janos Kirz, State University of New York at Stony Brook; Donald

Stevens, Department of Energy (DOE) Associate Director for Basic Energy Sciences, Office of Energy Research; NSLS Chairman Michael Knotek; Jerry Bellows, DOE Brookhaven Area Office Manager; and Robert Hughes, President of Associated Universities, Inc.

—photo by Rosen

## Geoffrey Hind Becomes Biology Chairman

Geoffrey Hind, who had been the Deputy Chairman of the Biology Department since 1979, began a three-year appointment as Chairman yesterday.

In announcing the appointment, Laboratory Director Nicholas Samios noted, "Hind's knowledge of cellular organelles, biochemical reactions, and

biophysical techniques meshes with the research endeavors of the Department. He is an international leader in the biochemical and biophysical investigations of photosynthesis, in particular the flows of ions, electrons, and energy among the various photosynthetic compartments."

Hind replaces Richard Setlow, Associate Director for Life Sciences, who was Chairman from 1979 to 1986 and who has been Acting Chairman since January 1986. Setlow will keep his laboratory in the Biology Department and carry out his Associate Director's duties from there.

In his new role, Hind sees "no cause for any radical change. Richard Setlow held onto important principles established by previous chairmen and made improvements that further increased the Department's vitality. Hiring top quality young biologists in developing fields has placed us in a strong position to contribute in meeting challenges such as the human genome project."

In sum, Hind feels, "This is an exciting time in biology, and this is an exciting Biology Department." Among the factors he cites for his enthusiasm regarding the Department are:

- The high proportion of research associates: The ratio of Biology post-docs to staff is the highest at BNL. This is beneficial to both sides. "These young scientists bring new ideas, ask old questions in new ways," says Hind, "and from their standpoint, BNL Biology is a good place to go on from."

- A vigorous seminar program, which, Hind notes, "brings visibility to the Department and keeps us abreast of fields such as molecular genetics where there are very rapid changes."

- Proposals such as the one currently in process for a Molecular Biotechnology Unit, which features strong interaction with major East Coast universities and industry. Hind explains, "From the standpoint of an experimental structural biologist using one of the Center for Structural Biology's beam lines at the NSLS or HFBR, this Unit will be an immense help. It will speed up the supply of suitable



Mort Rosen

Geoffrey Hind

biological samples by coupling genetic techniques for making discrete changes in protein primary structure with a method, originating in work done at BNL, which can provide the large amounts of a scarce protein that are required for growing crystals.

"Besides facilitating the supply side," he continues, "the Unit will introduce new technologies to data retrieval and computer modeling so we can improve turnaround in solving a protein structure and optimize returns on investment in these major facilities."

Hind also noted, "Benno Schoenborn has played a key role in developing the Center for Structural Biology, and I am delighted that he will continue to serve as the Associate Chairman for Structural Biology."

Geoffrey Hind obtained an M.A. in biochemistry in 1958 from Downing College, Cambridge, England, and his Ph.D. in botany in 1961 from Queen Mary College, University of London.

(Continued on page 4)

## Fulfilling a Common Goal

Suffolk County Executive Michael LoGrande (center) and Laboratory Director Nicholas Samios (right) last week signed an agreement aimed at helping the Lab and the County fulfill their common goal of providing the highest possible degree of protection to the Long Island environment. Also on hand for the signing was David Harris, Commissioner of the Suffolk County Department of Health Services (DHS).

Under the terms of the agreement, BNL will voluntarily conform to applicable environmental requirements of Articles 6, 7, 10 and 12 of the Suffolk County Sanitary Code, which deal with air and groundwater protection. The agreement also allows personnel from the County DHS to have access to the site and provides for closer contact between the two organizations through regular meetings.

The agreement was the result of several months of discussions between representatives of the Suffolk County DHS and staff members from BNL's Safety & Environmental Protection Division and Director's Office.



Mort Rosen

**Inside:  
Picnic Pictures**

# BNL's Fabulous Forty

## Picnic! Picnic! Picnic!

More than 3,500 BNL enthusiasts braved the gusty winds and bursts of rain on Saturday, September 19 to gather at the Picnic celebrating the Lab's 40th Anniversary. Though the weather was chilly, the food was hot: Popcorn, beer, soda and cotton candy flowed.

Since William Shakespeare was among those who were unable to attend, Jerome Hudis, AUI Vice President — Programmatic Affairs, has summed up the spirit of the picnickers:

**"To Those Who Picnicked in the Rain With Me"**  
(with apologies to W. Shakespeare, King Henry V)

*This story shall the good employees teach their heirs;  
And the Anniversary Day shall ne'er go by  
From this day to the ending of the world,  
But we who picnicked shall be remembered;  
We few, we happy few, we band of brothers;  
For you who frolicked in the rain with me  
Shall be my brother;  
And those who stayed at home  
Shall think themselves accurs'd they were not here,  
And hold their honor cheap whilst any speaks  
That picnicked in the rain with us on Anniversary Day.*



## We Love a Parade!

It didn't rain on our Parade — the fire trucks hooted, the band played, strange creatures capered, clowns jumped and waved. The Grand Marshall and Mariette Kuper, BNL's first woman employee, headed the event, and over a dozen employees who have worked at the Lab for 40 years rode in the antique cars that followed.

Marching along were representatives of the Fun Olympics teams, Women in Science and BERA — members of the Board and the Special Events Committee. Rolling along were Motorcycle and Camping Club members, some of whom had been blowing up the 1,000 balloons that added bursts of color along the line.



## Let the Games Begin!

The Greeks had the idea of holding Olympics, but the BNL Picnic Fun Olympics had some unique variations on the original theme. "When did it start raining?" asked one competitor in surprise after finishing an exciting race during which rain had steadily soaked both contestants and onlookers — but who cared?



Nine teams competed in the Fun Olympics, and first place was wrested from all comers by the Alternating Gradient Synchrotron Department team: (front, from left) Bob Tallon, Phillip Thomason, Derek Lowenstein, Kevin Barnes, (back, from left) Ralph Brown, John White, Bob Marascia (Captain), Dana Beavis. Not pictured: Tony Brown, Ron Clipperton, John Mazzeo and Billy Washington.



The gallant second place Fun Olympics winners were the National Synchrotron Light Source Department team: (front, from left) Heather Chen, Gerry Van Derlaske (Captain), Al Borrelli, Caroline Harris, Jim Garrison, John Rubino, (back, from left) Mike Kelly, Ken Riker, Rick Murgatroyd, Mike Fulkerson, Pooran Singh, Bill Cahill, Tom Romano. Not pictured: Bob Best and Madeline Hughes.

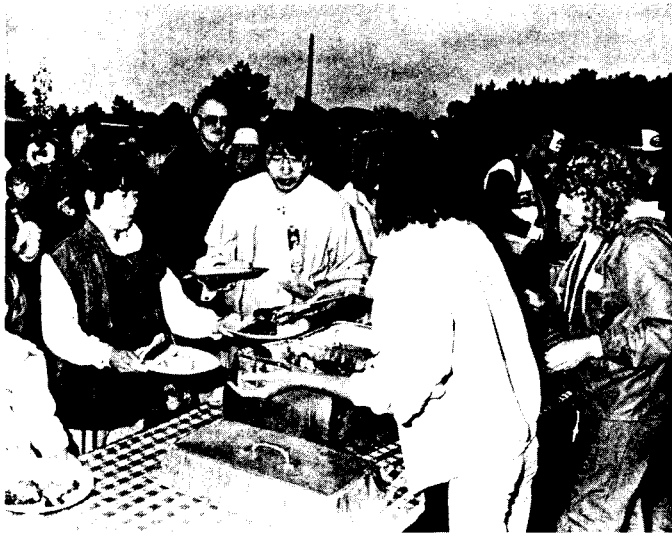


# Picnic Song

(sung to the tune of "Summertime.")  
Time — we attended in thousands,  
was falling, but our energy high —  
...bs in hand, and the cookin' good-lookin',  
...ers danced and made their own blue sky.

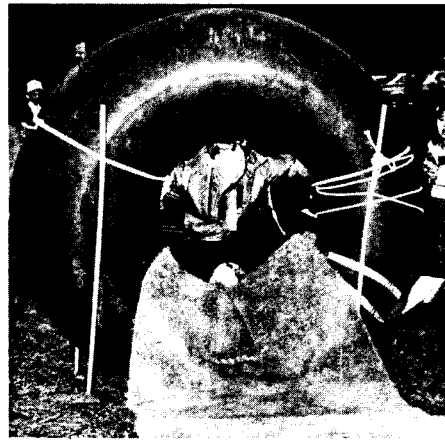


picnic photos by [unreadable] [unreadable] ton.



# Gilding the Lilies

Face Painting turned out to be a very popular item among adults as well as children. And if the rain washed it off, you could always get a second coat!





## Coming Up

Andrew Sessler, former Director and senior staff member at Lawrence Berkeley Laboratory, will speak on the "Technological Aspects of the Strategic Defense Initiative," (SDI) at a Physics Colloquium to be held on Tuesday, October 6, at 3:30 p.m., in the Physics Department seminar room, Bldg. 510. A theoretical accelerator physicist, Sessler was a member of the group that reviewed the SDI for the American Physical Society.

John Blewett, who came to BNL in 1947 and retired as a Senior Physicist in 1975, will deliver the next Brookhaven Lecture, the second in a series of four lectures planned this fall to commemorate the Lab's 40th anniversary. He will speak about "The Cosmotron," on Wednesday, October 14, at 4:30 p.m., in Berkner Hall.

## Winners' Circle

The largest award ever given by the Employee Suggestion Program (ESP) — \$2,435 — has just been earned by an employee who requested anonymity. The winning suggestion proposed eliminating the general use of bottled water at the Lab. Restricted use of bottled water resulted in a savings of \$24,350 during the first year of implementation.

Another recent winner is Sheldon Martin, a Tool & Instrument Maker in Central Shops. Martin was awarded \$100 for suggesting that BNL auto decals be placed on the backs of rear-view mirrors.

Ronald Mulderig, a Custodian in Plant Engineering, suggested that plastic vacuum wands and wooden mop handles replace any metal ones when being used in experimental areas where wires are present or where flooding occurs. This safety improvement idea won Mulderig \$75.

New, cost-saving suggestions for the Lab are always welcome, and employees who submit original ideas will receive a "thank you" mug from the ESP.

## WIS Party

The Annual Wine and Cheese Party of Brookhaven Women in Science will be held on Wednesday, October 7, from 4:30 to 6:30 p.m., in the Recreation Building. All members and non-members interested in joining are welcome. No reservations are necessary. Please come and greet the newly elected officers: Louise Hanson and Stephanie Lamontagne, Group Coordinators; Pat Webster, Secretary; Susan Eng, Treasurer; Mary Kinsley, Program Chair; Carmen Benkovitz, Seminar Lecture Chair; Eva Bozoki, Scholarship Chair; and Eva Emmerich, Publicity Chair.

# BROOKHAVEN BULLETIN

Published weekly for the employees of BROOKHAVEN NATIONAL LABORATORY

ANITA COHEN, Editor  
MARSHA BELFORD, Senior Reporter  
LIZ SEUBERT, Reporter

35 BROOKHAVEN AVE., UPTON, N.Y. 11973  
Telephone (516)282-2345

## AUI Scholarship Alert

Application forms for the 1988 AUI Trustee Scholarship are now obtainable from the Office of Scientific Personnel. Children of regular employees of BNL are eligible to compete for up to 12 scholarships, renewable for up to four years of study toward an academic degree.

In addition, up to three scholarships may be awarded to BNL and National Radio Astronomy Observatory (NRAO) employees' children who are Black, Hispanic or Native American. One such scholarship is open to qualified children of employees at BNL and another for children of NRAO employees. One may be awarded to an additional applicant from either institution on a competitive basis.

Each scholarship will be \$2,000 per year. Qualified applicants are the children of BNL employees who began regular full-time or regular, eligible part-time employment no later than November 1, 1987, and who are em-

ployed by BNL at the time the award is announced; or children of retired employees or of employees who died when in regular service at the Laboratory. Stepchildren are eligible if the employee regularly claims the child as a dependent for income tax purposes.

Applicants must also be secondary school seniors who will be graduating during the current academic year and entering college by fall 1988.

In addition to filing applications by November 1, 1987, eligible candidates are required to take the Scholastic Aptitude Test. Scholarship winners will be selected by an independent committee reporting to Sponsored Scholarship Programs, an organization within the Educational Testing Service.

Application forms and further information are available at the Office of Scientific Personnel, Building 185A.

## Testimonial Postponed

The Nuclear Structure Colloquium and testimonial dinner to honor Gertrude Scharff-Goldhaber, scheduled for October 19, has been postponed. Scharff-Goldhaber was injured in a fall while attending a meeting at Sussex University, England, so the celebration in her honor will be rescheduled after her recovery. The new date will be announced in a future issue of the Bulletin. In the meantime, the checks of those who made reservations for the October 19 dinner are being returned.

## Arrivals & Departures

### Arrivals

Bernard Bendriem ..... Chemistry  
Julie LaRoche ..... DAS  
John C. Lehmanski ..... Central Shops  
Richard A. Lewis ..... DNE  
Joseph Pagano ..... Plant Eng.  
Christopher P. Weaver ..... AGS

### Departures

This list includes all employees who have terminated from the Laboratory, including retirees:  
A. Bertrand Brill ..... Medical  
Edward A. Frantz ..... Physics

## Cafeteria Menu

### Week of October 5

<b>Monday, October 5</b>	
Cream of mushroom soup	(cup) .75
	(bowl) .95
Meatball stew	2.85
Turkey broccoli Mornay	2.95
Chef salad plate (lite-weight)	2.25
Hot deli: Grilled Ryebein	2.65
<b>Tuesday, October 6</b>	
Navy bean soup	(cup) .75
	(bowl) .95
Roast top round of beef w/1 veg.	2.95
Sausage pizza deluxe	(slice) 1.00
Broiled salmon fillets w/1 veg.	3.95
Hot deli: Roast turkey	(bread) 2.55
	(roll) 2.65
	(hero) 2.75
<b>Wednesday, October 7</b>	
Southern vegetable soup	(cup) .75
	(bowl) .95
Veal scaloppine over noodles	2.95
Shrimp fried rice w/1 veg.	2.65
Tacos	(each) .85
Hot deli: Sausage & pepper hero	2.75
<b>Thursday, October 8</b>	
Corn chowder	(cup) .75
	(bowl) .95
Hunan chicken	2.75
Stuffed Italian shells	2.85
Stuffed tomato cold plate (lite-weight)	2.25
Hot deli: Roast beef	(bread) 2.55
	(roll) 2.65
	(hero) 2.75
<b>Friday, October 9</b>	
Manhattan clam chowder	(cup) .75
	(bowl) .95
Baked BBQ spareribs w/1 veg.	2.85
Macaroni & cheese	2.65
Broiled fresh fillet of fish (lite-weight)	2.85
Hot deli: Fried fish on a bun	2.65

## Hospitality News

The next Hospitality Committee monthly get-together has been rescheduled. Instead of on Tuesday, October 6, the group will meet on Tuesday, October 13, at 9:30 a.m., at the Brookhaven Center.

## Payroll Note: Tax Changes

As a result of the New York State Tax Reform and Reduction Act of 1987, new withholding tables have been issued effective for wages paid after September 30.

Generally, this change will result in less state tax being withheld and, consequently, more money showing up in paychecks. Weekly employees will spot the difference in the paycheck of October 1 and monthly employees on October 30.

## In Memoriam

It has been learned that Marion L. Pond, the first and most generous contributor to the Camp Upton museum at the Exhibit Center, died on September 17, the day after his 92nd birthday. Pond first came to Camp Upton upon his discharge from the Army on July 19, 1919, and he considered his role in establishing the Camp Upton museum at BNL as one of his most important accomplishments. Pond was a past commander of the Hand-Aldrich American Legion Post #924, Hampton Bays; past adjutant of the Veterans of World War I, Patchogue Barracks #2981; deputy Americanism chairman of the Veterans of World War I; and historian of the Hand-Aldrich Post. He is survived by his wife Edna, of Hampton Bays.

**All film badges will be changed tomorrow. Please place your badge in its assigned rack space before leaving work today.**

## Missing Tape

Tape NH5418 is missing from the Central Scientific Computing Facility, Applied Math Department. Written on the label are the names Vallee and Mastrangelo. If anyone has seen this tape, please notify A. Natoli, Ext. 3976.

## Hind

(cont'd)

After three years' postdoctoral work at Johns Hopkins University, he joined the staff of the Biology Department in 1964, as Research Associate.

Appointed to the scientific staff in 1965, Hind received a tenure appointment in 1968 as Plant Physiologist. He served as Acting Chairman of the Biology Department from 1977-78 and was appointed Senior Biochemist in 1978.

Since 1980, Hind has participated in a United Nations Environment Program training course, which introduces plant scientists in Third World nations to recent advances in field and laboratory techniques for monitoring the productivity of agricultural, forestry or aquatic systems.

## Inside Info

Herbert Kouts, who has been Chairman of the Department of Nuclear Energy (DNE) since 1977, has accepted an extension of his appointment until August 31, 1988, or earlier, if a new Chairman is appointed. DNE Senior Scientist Joseph Hendrie is now leading a search committee exploring possible candidates for consideration by Laboratory Director Nicholas Samios.

Herbert Kouts' previous term expired September 30. He requested that he not be considered for reappointment as Chairman in order that he might continue at the Lab, pursuing many of his specialized nuclear energy interests, both domestically and internationally.

## Service Awards

The following employees received service awards during the month of September:

### Forty Years

Julius M. Hastings ..... Chemistry

### Thirty Years

Basil DeVito ..... AGS  
Charles B. Meinhold ..... S&EP

### Twenty-five Years

Donald F. Bastedo ..... AGS  
Bernard F. Belligan ..... Plant Eng.  
James P. Birtle ..... MIS  
Louis W. Blum ..... AGS  
Theodore E. Erickson ..... Physics  
Mabel Evans ..... DCP  
Frank G. Heimroth ..... AGS  
Richard W. Hogue ..... ADD  
Leonard C. Kalmar ..... AGS  
Robert O. Rasmussen ..... Plant Eng.  
Keith H. Thompson ..... Biology

### Twenty Years

Raymond C. Atkins ..... AGS  
Kenneth Batchelor ..... NSLS  
Albert M. Casper ..... AGS  
Theodore A. Daniels ..... Applied Math  
Michele E. Haller ..... DCP  
Alan V. Kuehner ..... S&EP  
Richard E. Machnowski ..... Instrum.  
John H. Maddock Jr. .... AGS  
Walter J. Mason ..... Staff Services  
Clarence C. Pittenger ..... Appl. Math  
William C. Venegas Jr. .... AGS

### Ten Years

Kerry A. Bonti ..... Medical  
Peter J. Bonti ..... Safeguards & Sec.  
Michael A. Brauner ..... Plant Eng.  
Ora A. Colson ..... Reactor  
Susan C. Foster ..... Personnel  
Peter R. Garcia ..... Safeguards & Sec.  
Sheryl A. Golden ..... Reactor  
Louise K. Hanson ..... DAS  
George R. Hendry ..... DAS  
Ralph F. Jones ..... DAS  
Kevin J. Kobus ..... Plant Eng.  
Jean Logan ..... Chemistry  
Harriet Martin ..... TID  
Arthur H. Nintzel ..... Physics  
Joseph E. Pasciak ..... Applied Math  
Mark A. Sardzinski ..... ADD  
Mitsuyoski Tanaka ..... AGS  
Richard J. Tulipano ..... DAS  
Marilyn A. Zane ..... Plant Eng.

**See Supplement for BERA News and Classified Advertisements.**

## BERA News

### All-Beethoven Concert Next Week

The Composers String Quartet will present the first performance in the regular 1987-88 BERA Concert Series, an all-Beethoven concert beginning at 8:30 p.m. on Wednesday, October 7, in Berkner Hall.

Next week's performance will continue the series begun last year by the Concord String Quartet, which will ultimately include the complete cycle of 16 string quartets written by Ludwig van Beethoven. On the program October 7 will be two quartets: Op. 18, No. 3 and Op. 130 with the Grosse Fuge.

Founded in 1966, the Composers String Quartet has won critical acclaim on six continents. As quartet-in-residence at Columbia University since 1975, the ensemble has been featured in a variety of concerts there, including three complete cycles of the Beethoven string quartets. The players are not only masters of the classical repertoire, however. During the past concert season, their twentieth year together, the Composers String Quartet performed the world premiere of the Fourth String Quartet by the noted American composer Elliott Carter.

Tickets can be purchased at the door the night of the performance. Prices are \$9 for general admission, \$6 for students and those over age 65, and \$5 for those under 18. Block tickets, good at any concert in the current series, can also be purchased that evening. They are priced at \$6 each, for a minimum purchase of five tickets.

### Volleyball

The second Volleyball captains meeting will be held on Wednesday, October 7, at noon, in the Hamilton Seminar Room of Bldg. 555, Chemistry. Discussion and voting on the local rules and constitution will take place at this time. Captains or team representatives must attend.

### Tickets to Islanders on Sale Next Week

Tickets for the Islanders' 1987-88 regular hockey season will go on sale at the BERA Sales Office in Berkner Hall on Tuesday, October 6, at 8 a.m.

BERA's eight seats for the 40 home games at Nassau Coliseum are located in Sections 319J and 321A. Tickets are priced at a special reduced cost of \$21.50, a savings of \$1.50 per ticket.

Copies of the home game schedule are now available at the BERA Sales Office.

#### Buying limitations:

- Tickets will be sold in pairs only.
- During the initial sale, tickets for Islanders/Rangers games will be limited to two tickets per employee.
- The BERA Sales Office will not give any refunds or make any ticket exchanges after a sale is completed.

In the event the Islanders climb into the NHL playoff and champion-



The Composers String Quartet

### Bowling

#### Week of September 14

##### Pink League

High games were bowled by Maryann Reynolds 223/206/175 for a 604 scratch series, Renie Rosati 195/156, Sandy Asselta 170/167, Pamela Spencer 168/151, Maria Apelskog 165, Donna Cunningham 164, Kathy Folkers 155/150.

##### Red/Green League

N. Combatti rolled a 241, J. Mayeski 233/615 scratch, R. Mulderig 231/209/220/660 scratch, E. Sperry IV 221, A. Warquentien 221, J. Petro 211/201, J. Connelly 209, T. Prach 209, C. Bohnenblusch 208, J. Morris 204.

##### White League

Scores for two weeks of bowling were J. Vogel 224, E. Sperry IV 210, K. Asselta 200, G. Riker 184, N. Erickson 182, P. Oster 180, J. Ferrante 223/214, J. Petro 221/219/604 scratch, K. Asselta 210/204, J. Vogel 202, F. Brown 187.

##### Purple League

Two week scores were as follows: E. Meier 203, C. MacDougall 189, R. Flack 179, J. Penoyar 202, S. Moore 178.

ship races next spring, only those employees who support the BERA Ticket Service Program during the season will be eligible for entry in the special drawing for home game tickets.

### Golf

The end-of-the-year tournament and awards dinner will be held on Thursday, October 22, at the Fox Hill Country Club, Baiting Hollow. The tournament will start at noon with a shotgun start and will be followed by a buffet dinner.

The tournament entry fee of \$30 for BGA members and \$45 for non-members includes greens fee, tournament fee, electric cart rental (required) and dinner. The deadline for sign up and payment of entry fees is Wednesday, October 14. Checks, made payable to the BERA Golf Association, should be sent to Bob Mills, Bldg. 901, Ext. 5043.

A record 88 golfers played in the tournament held at Hampton Hills. Low gross and low net winners in each flight were: Flight A — Steve Heald (79) and Peter Bond (70); Flight B — Mike Zguris (93) and Jack Detweiler (72); Flight C — Bob Brown (93) and Frank Thomsen (72); Flight D — Kevin Yachnik (99) and Joe Carbonaro (70); and Flight E — Mark Culp (110) and Tom Dilgen (68). The closest to the pin contests were won by Mike Dioguardo (3rd hole) and Vinnie Racaniello (12th hole). The long drive winners were John Millener (4th hole) and Brant Johnson (10th hole).

#### Week of September 21

##### Red/Green League

High games were bowled by T. Holmquist 251, J. Morris 225, R. Mulderig 220, G. Meinken 217, W. Kristiansen 212, E. Sperry IV 211/201, N. Parrinello 202.

##### Pink League

Donna Cunningham rolled a 193, Maryann Reynolds 192/173/171, Sandy Asselta 187.

##### White League

Joe Ferrante bowled games of 203/226 for a 611 scratch, Mary Scheidet 190, Sandy Asselta 186.

##### Purple League

Ed Meier had a 210, Joe Sheehan 207, Sharon Moore 191, Caryl MacDougall 190.

### Football

#### September 22

Roga 35 — Rangers 0  
Untouchables 14 — The Other Guys 0

#### September 24

The Other Guys 19 — Rangers 13 (OT)  
Untouchables 27 — Raiders 6

### On Sale: Mugs & T-Shirts

What's blue and white and full of potential? An empty mug commemorating BNL and AUI's first forty years. It has the potential to remind you of the Lab's history of accomplishment every time you fill it up with your favorite beverage.

Mugs are on sale for \$3 each, through October 9 or until supplies run out. To get yours, just stop by the Tour Program Office, Bldg. 184B, from 8 a.m. to noon, Monday through Friday.

T-shirts commemorating the Laboratory's first forty years are still available by order.

Orders can be placed at the BERA Sales Office, Berkner Hall, from 9 a.m.-2 p.m. weekdays. Shirts come in unisex sizes: adult's small, medium and large; and child's small, medium and large. Each shirt costs \$6, including tax.

The T-shirt sale will continue depending upon the number of orders that are placed. Don't be disappointed — this may be your last chance to get a great BNL souvenir!

### Help Wanted At Cafeteria

Marriott Corporation, which now runs the cafeteria, needs several new employees to fill utility and general positions. Marriott Corporation is an equal opportunity employer. Anyone interested may apply in person at the cafeteria, Ext. 3541.

### Classified Advertisements

#### Placement Notices

The Laboratory's placement policy is to select the best-qualified candidate for an available position, with consideration given to candidates in the following order of priority: (1) present employees within the department and/or appropriate bargaining unit, with preference to those within the immediate work group; (2) present employees within the Laboratory as a whole; and (3) outside applicants. In keeping with the Affirmative Action plan, selection decisions are made without regard to age, race, color, religion, national origin, sex, handicap or veteran status.

Each week, the Personnel Office lists new personnel placement requisitions. The purpose of these listings is, first, to provide open placement information on all non-scientific staff positions; second, to give employees an opportunity to request consideration for themselves through Personnel; and, finally, for general recruiting purposes. Because of the priority preference policy stated above, each listing does not necessarily represent an opportunity for all candidates. As a guide to readers, the listings are grouped according to the anticipated area of recruitment.

Except when operational needs require otherwise, positions will remain open for one week following publication date.

For further information regarding a placement listing, contact the Employment Manager, Ext. 2882.

**LABORATORY RECRUITMENT** - Opportunities for Laboratory employees only.

2696. MAIL CLERK - Staff Services Division.

2697. SECRETARIAL POSITION - Requires AAS in secretarial science or equivalent, shorthand skills and knowledge of general procedures. Familiarity with MICOM word processing essential. Previous IBM/PC experience helpful. Contracts and Procurement Division.

**OPEN RECRUITMENT** - Opportunities for Laboratory employees and outside applicants.

2698. ENGINEERING POSITION - Requires BS in safety engineering/industrial hygiene and the ability to conduct independent safety investigations. Will support general safety program with specific responsibilities for program assessments, technical assistance and hazard monitoring. Safety and Environmental Protection Division.

#### Motor Vehicles & Supplies

66 TRAVELMATE POP-UP TRAILER - sleeps 6, good cond., extras, asking \$550. 472-1409.

73 CHEVY CAPRICE - high mileage, 400 cu. in. engine, a/c, am/fm, runs, \$325. 878-2484.

84 Z28 - fully loaded, 37k mi., T-top, like new, must see, asking \$9,250. 924-5541.

70 CHEVY IMPALA - custom, 46k mi., excel. cond., \$1,000. Denise, Ext. 3406.

REAR BUMPER - for 75-79 Ford pickup, 8' bed, good cond., \$350. Tom, 472-4228.

78 FORD LTD WAGON - 78k mi., good running cond., asking \$900. Ext. 4054 or 289-1989 eves.

FORD 302 V8 C-4 - a/t, complete, asking \$300. 475-6797.

80 DODGE ASPEN - wagon, new tires, a/c, p/s, p/b, excel., \$1,800 neg. Craig, Ext. 4028.

78 FORD LTD - 8 cyl., a/c, p/s, p/b, black, good cond., \$1,100. 737-1957 eves.

68 MUSTANG - 2 dr., a/t, good body, runs well, am/fm cass. Ext. 4932 or 928-8993.

75 CAMARO - 6 cyl., rebuilt engine, wire wheels, raised lettered tires, \$1,500. Ext. 2529 or 588-7989 eves.

78 MERCURY BOBCAT - station wagon, a/t, V6, new fuel pump & water pump, recently tuned, clean, runs well, \$750. Ext. 4153 or 732-5829.

67 FORD - half-ton pickup, 6 cyl., 3 spd., runs, \$600 or best offer. 475-6797.

79 THUNDERBIRD - black, all power, a/t, p/s, am/fm, excel. cond; 76 Pontiac Firebird, red, 350, p/s, p/b, am/fm cass., good cond. 475-5591 eves.

77 MERCURY GRAN MARQUIS - 2 dr., 460 V8, 92k mi., garaged, \$1,600. 744-2805.

74 CHEVROLET NOVA - 2 dr., 6 cyl., 3 spd., 113k mi., \$300. Ext. 3741.

74 FORD MAVERICK - a/c, 4 dr., good running cond., \$275 or best offer. Ext. 3341.

86 SUBARU DL WAGON - blue, sunroof, front seat covers, extras, very clean, 16k mi., \$8,000. 288-3104 eves.

77 CHEVY - station wagon, 305 V8, new radiator, new muffler, recently tuned, asking \$1,500. Chen, Ext. 3369.

79 CHEVY MALIBU - 79k mi., good body, \$500. Andy, Ext. 2907.

78 CHEVY LUV PICKUP - 4 cyl., 4 spd., good cond., \$750. 758-6703 eves.

64 FORD FAIRLANE 500 - 2 dr. sport coupe, 289 factory 4-on-floor buckets, \$1,000. Eileen, Ext. 4194 or 924-4922.

74 AMC HORNET - good transportation, best offer; 4 tires, 195X75-15MTS, low miles, best offer. 331-1572.

83 MAZDA RX7-GSL - cloth int., 5 spd., am/fm stereo cass. w/equal., a/c, p/w, alarm sys., 62k mi., excel. cond., \$7,500 neg. 473-5123 after 7 p.m.

TIRES - 2, Dunlop, gold, steel-belted, P215/75B15, new, \$50; 2 Volvo rims, 15", \$20. Bill, 929-6442 after 6 p.m.

83 MITSUBISHI STARION LS - new turbo, a/c, loaded, 48k mi., excel. cond., \$6,800. 981-9474.

84 CHEVY CELEBRITY - 4 dr., 6 cyl., new a/c, p/s, p/b, low mileage, \$5,500. 269-9175.

80 SUZUKI GS550L - black, custom paint, sissy bar, oil cooler, case guards, orig. owner, \$895. Bob, Ext. 4446 or 654-3989 after 5 p.m.

79 BUICK LeSABRE - 350 V8, 4 dr., a/c, p/s, p/b, p/l, am/fm, 4 new tires, good cond., \$1,800. Ext. 3137 or 3115 after 6 p.m.

84 DODGE AIRES - 4 dr., p/s, p/b, a/t, a/c, am/fm, runs well, reliable, 43k mi., \$3,500 neg. 981-7715.

## BROOKHAVEN BULLETIN

Published weekly  
for the employees of  
BROOKHAVEN NATIONAL LABORATORY

ANITA COHEN, Editor  
MARSHA BELFORD, Senior Reporter  
LIZ SEUBERT, Reporter

35 BROOKHAVEN AVE., UPTON, N.Y. 11973  
Telephone (516)282-2345

77 MUSTANG II - 4 speed, low mileage, new exhaust, timing chain, clutch. 758-5592 eves.

VETTER QUICKSILVER FAIRING - black w/gold pinstripe, frame mount, full lighting, never used, \$120. Henry, Ext. 5110.

81 FIREBIRD - p/s, p/b, a/c, a/t, new tires, mint cond., must see, \$2,950. Andy, 878-4177.

86 PONTIAC GRAND AM - fully loaded. 325-8922 after 5 p.m.

73 PINTO WAGON - reliable, needs some work, \$250 or best offer. Randy, 399-0039 eves.

78 LTD - 4 dr., V8, power, a/c, excel. in/out, \$1,900. 589-2681.

78 YAMAHA 400 - 14k mi., inspected, insured, good cond., \$400. 473-9223 after 5 p.m.

TIRES - 5, P205R70, steel belted, Bridgestones, mounted on white wagon wheels, 2k mi., \$300 neg. 654-5298, leave message.

75 CAMARO - many new parts, \$1,000. 928-5230.

86 TOYOTA MR2 - a/t, white, fully loaded, 23k highway mi., still new cond., asking \$13,000. Donna Ree, 473-6294.

75 MUSTANG II GHIA - many new parts, 302 V8, a/t, p/s, p/b, good cond. 588-3496.

76 JEEP CHEROKEE - 2 new tires, s/t, 4wd, 6 cyl. 744-8790 after 6 p.m.

71 SUPER BEETLE - new motor, tranny, clutch, heater box, many extras, rims w/tires, good cond., \$500. Ray, Ext. 3536 or 289-7615.

83 FIREBIRD - loaded, T-tops, spoiler, full power, great stereo system, good cond., \$7,300. Tom, 736-6691.

85 CHRYSLER LeBARON - 4 dr., p/s, p/b, a/c, a/t, am/fm stereo, good cond., \$7,995 neg. 281-2208 after 5 p.m.

77 CHEVETTE - dependable, well maintained, \$650 or best offer. Joe, 821-3071 or 282-4859.

84 TOYOTA PICKUP - 5 speed, 4wd, sunroof, a/c, 33" tires, extra cab, excel. in/out, \$8,700. 277-2671 after 6 p.m.

78 VW RABBIT - orig. owner, 91k mi., excel. cond., \$1,000. John, Ext. 3821 or 473-6624 after 6 p.m.

MANIFOLD & CARBURETOR - (2 bbl), fits Ford, \$10; chrome roof rack, \$5; chrome tube grill, \$5. Ray. Ext. 3536 or 289-7615.

80 TOYOTA COROLLA WAGON - a/t, p/s, steel radials, excel. mech. cond., \$1,750 neg. 758-9197.

72 CHEVY NOVA - 135k mi., \$400. Paul, Ext. 4156.

76 DATSUN B-210 - am/fm cass. w/equalizer, \$750. Bob Brown, Ext. 3569 or 369-1170 after 5 p.m.

77 MERCURY MARQUIS - station wagon, 105k mi., radio, a/c, rack, full power, much more, excel. cond., \$1,550. Ext. 2341 or 821-2716.

81 VW RABBIT - 4 speed, 69k mi., good cond., asking \$1,350. 467-5646 after 5:30 p.m.

65 PLYMOUTH MANUAL TRANSMISSION - needs front bearing, \$20. Frank Rumph, 588-3565.

86 HARLEY DAVIDSON SPORTSTER - 1100cc, mint cond., \$4,350. 325-0699 after 6 p.m.

83 CAMARO BERLINETTA - 6 cyl., a/t, full power, a/c, cruise, 61k mi., \$5,900. 758-6703 eves.

85 PLYMOUTH TURISMO DUSTER - grey, a/t, p/s, am/fm cass., tinted windows, louvers, 37k mi., orig. owner, mint, \$5,500. 585-1656 after 1 p.m.

75 CHEVY IMPALA - station wagon, cream color, 9 passenger, new battery, excel. tires, good cond., \$950. Arnold, Ext. 2050.

83 CHEVY CELEBRITY - a/t, a/c, 6 cyl., good cond., \$3,300. 472-4228.

78 AMC CONCORD - a/t, p/s, p/b, am/fm cass., 70k mi., 4 dr., \$1,000. Ext. 4638 or 281-0360 eves.

74 VOLVO - high mileage, rebuilt engine, good running cond., reliable, \$950. Torsten, Ext. 3817 or 878-1210.

82 BUICK SKYHAWK LTD - 2 dr., a/t, p/s, p/b, a/c, \$2,900. Ext. 4262.

81 JEEP WAGONEER LTD - tan/wood, V8, 4 dr., 4 wd, full power, a/c, sunroof, \$8,100. 475-3407.

83 MAZDA RX7-GSL - cloth int., 5 speed, am/fm stereo cass. w/equal., a/c, p/w, alarm sys., 62k mi., excel. cond., \$7,500 neg. 473-5123 after 7 p.m.

SUZUKI F50 SCOOTER - 1986, bright blue, excel. cond., \$300. 821-0250.

77 AUDI FOX - a/c, radials, excel. running cond., 85k mi., \$1,250. Al, Ext. 4442 or 929-8411.

80 CHEVY CHEVETTE - 4 dr., hatchback, cloth int., am/fm, good cond., \$800 or best offer. Ext. 5299 r 924-0848.

77 DODGE ASPEN - V8. Jim, 744-6287 eves.

86 HYUNDAI GLS - loaded, 5 speed, upgraded stereo system, alloy wheels. 758-5452 after 6 p.m.

80 MONZA - new tires, battery, a/t, good cond., \$650. 732-6647 or 732-6678.

85 FORD ESCORT - 4 dr., hatchback, a/t, p/s, p/b, am/fm cass., 27k mi., \$4,000. Ext. 4846 or 363-6940.

77 PLYMOUTH ARROW - 2000cc, a/t, moon roof, make offer. Ext. 2011.

84 VW RABBIT - 4 dr., sunroof, stereo system, 4 speed, \$3,200. 286-2093.

78 HONDA CIVIC - 5 speed, 35 mpg, new brakes, good tires, runs well, \$650. Frank, Ext. 3531.

80 PONTIAC PHOENIC - 2 dr., a/t, p/s, p/b, a/c, good cond., \$2,000. 928-8522.

78 VW RABBIT - 91k mi., orig. owner, s/t, excel. cond. John, Ext. 3821 or 473-6624 after 6 p.m.

### Boats & Marine Supplies

18' SANNIBEL - 1984, centerboard boat, 3 sails, sleeps 4, extras, asking \$4,000. 473-1761.

32' CHRIS CRAFT - 1965, full, no engines, needs work, \$800 or best offer. Bob, 654-3206.

20' HOLDER - racing equipped, trailer, like new. 286-1076 after 3 p.m.

21' BAYLINER - 1986, swim platform, radios, canvas, i/O, in water. 878-0480 eves.

19' BAYLINER CAPRI BOWRIDER - 1984, Volvo I/O, trailer, many extras, must see, not in water in '87, \$7,000. Ext. 2981 or 473-7809 eves.

GREY MARINE V8 - fresh water cooled, no transmission, good for parts, \$75. Ext. 7136.

### Miscellaneous

TICKETS - 2, Metropolitan Opera, L'Elisir d'Amore, row L, orchestra center, October 13. Ext. 3922.

APRICA STROLLER - ideal for travel, \$50; wooden baby swing & crib bumpers, hardly used. Ady, Ext. 4531 or 331-3785.

MAHOGANY PENCIL POST BED KIT - queen size, \$400; small Frigidaire refrigerator, \$15. Ext. 3128.

SIAMESE KITTENS - sealpoint, hand raised, beautiful blue eyes, \$150. 654-5298, leave message.

RADIO CONTROLLED VAN - 'Lunch Box', fully assembled, w/1Y-CAD batteries & remote control, \$200. Ext. 7636 or 744-8790.

IBM PC COLOR DISPLAY - high resolution, IBM-CGA compatible, \$300; IBM-PC Mono display, \$150. 744-9475 eves.

BATTERY CHARGER - 12-volt R/C, 6 & 7 cell, works on house, auto current. Ext. 7636 or 744-8790.

RADIO CONTROLLED 4WD PICKUP - w/rechargeable batteries, charger, very good cond., \$45. 475-4792.

BUILDING LUMBER - 2x6x8', \$2.50/each. Ron, Ext. 7533 or 286-0353 eves.

BOILER - 5 years old, Beckett burner, must sell, \$300. John, 588-4703.

MAGAZINES - Popular Mechanics, Science & Mechanic Illustrated, 1950's & up, \$15; 6 dozen canning jars, \$15. 878-6637.

PRINTERS - 2, Radio Shack, DMP200, very good cond., w/8 ribbons, \$150; Star Gemini 10X, good, \$120. Tom, 736-6691.

HYDRONIC WOOD STOVE - 200,000 Btu, excel. cond., \$750. John, 924-3492.

VIOLIN - student model, excel. cond., \$40. John, Ext. 5152 or 281-2471.

PIANO BENCH - black laquered, never used, \$75 neg. Ext. 3699.

WALL-A-WAY RECLINER - brown, must see, \$45. 924-3565.

AREA RUGS - 2, 6'x10', grey & rose, runner to match, 2'x18'. 821-0865.

DINING ROOM SET - table, 6 chairs, china closet, 3 exten., good cond., asking \$450. Ext. 3872.

GLASS PUNCH BOWL - 2 gallon capacity, w/large tray & 12 cups. 325-9511.

TRADITIONAL SOFA - antique green velvet w/tufted back, good cond., \$350. 475-4394.

SOFAS - 2, identical, blue velvet, like new, \$300/each neg. Sue, Ext. 7235 or 395-3529 after 6 p.m.

WASHING MACHINE - full size, heavy duty, two years old, white, \$200. Dennis, Ext. 4028.

TEAL DISK DRIVES - 180k, single sided, \$20/ea., 2 for \$35. Bob, Ext. 4551.

MURAL - large, 3-section, sea scene, \$25; Kerosene kerosene heaters, excel., \$50/ea. Ext. 2529 or 588-7989 eves.

TAPE RECORDER - \$10; tape deck, \$35; cordless phone, \$25. Bob, Ext. 4551.

KITCHEN ITEMS - Farberware, Corning, Regalware set, Tupperware, Pyrex bowls, yogurt maker, most like new. 821-3925.

WOOD BURNING STOVE - cast iron w/flue pipe, wood carriers, tools, \$250. 758-5592 eves.

SULKY - for Gravely tractor. 363-7032.

MOVING SALE - high chair, pool chemicals, space heater, humidifier, toaster, lawn mower, much more, reasonable. Ext. 2341 or 821-2716.

RABBIT HUTCH - w/water bottle, almost new, \$15. Pete, Ext. 3297 or 821-9547.

CHESS COMPUTER - Novag Super Constellation, printer & adaptor, mint cond., many features, \$150. Donna, Ext. 2754.

DINING ROOM TABLE - chairs, buffet, \$100; 6' sliding doors, \$40; kerosene heater, \$50. Ext. 2477.

TEAK DINING ROOM SET - 7 pieces, tiled table, rolling bar, like new, asking \$1,950. Al, Ext. 4442 or 929-8411.

FRANKLIN WOOD-BURNING STOVE - w/screen, \$125. 666-6738.

HI-FI SPEAKERS - & turntable. Kristin, 744-6287 eves.

SOLID POOL COVER - for above-ground pool, 32x16, used 2 seasons, \$40. Neal, Ext. 2254.

KEROSENE HEATER - 21,600 Btu, excel. cond., \$95. Ext. 2683 or 751-2469 eves.

FOUR-POSTER TWIN BED - Stanley, canopy, antique, white, \$50. Ext. 3954.

ARCHERY TREE STAND - \$50. Bob, Ext. 2514 or 757-3178 eves.

EXERCISE SET - rowing, pumping & more, like new, \$40. 331-1784 eves.

GO CART - mini bike frames, \$30/each; dehumidifier, \$20; console air cooler/humidifier, \$20; boy's clothes, size 10-12. Judy, 698-4882 after 6 p.m.

DRESSING TABLE - girl's, white, kidney-shaped, w/chair, all wood, \$35. Ext. 3275 or 924-6681 eves.

FISHER STEREO/VCR - wireless remote, memory, 14 day/4 event programmable, \$275. Gregg, Ext. 3457 or 874-8631.

TEXAS INSTRUMENTS PC - T.I. 99-4A, 4 games, dust cover, 2 pairs of joy sticks, \$45. Ext. 3788.

THOMAS ORGAN - like new, w/bench, 6 years old, cost \$3,500, asking \$1,500. 585-9149 or 588-0268.

LAWN MOWERS - 2, JC Penny, 3 1/2 h.p., rotary, 21" cut, \$60; Rickel, rear bagger, self drive, \$90. Dan, Ext. 4987 or 698-7322.

CAR SEAT - for toddlers, never used, \$15. Mark, Ext. 5350 or 369-0793.

FIREWOOD - split, seasoned, mixed, no pine, delivered locally, \$110/cord. Glenn, 924-6918 eves.

WESTINGHOUSE DEHUMIDIFIER - 30 pt. capac., \$75; Sunbeam 19" elec. lawn mower, needs work, \$65; washer/dryer, apt. size, \$450. Tom, Ext. 5350.

BIKE - Schwinn Predator dirt bike, excel. cond., \$90; piano, upright, good cond., \$300. 581-7656.

PRINTER - C. Itoh 8510A, w/interface, for Apple II. Cumming, Ext. 4338.

ATARI 800XL COMPUTER - w/printer, tape drives, programs, word processing; wrestling ring & figures. 394-1868.

ELECTROLUX VACUUMS - 2, auto., cord rewind, power heads, hoses, w/attach., vintage 60's & 70's, need work, \$45. 286-3679.

THOMAS ORGAN MINSTREL - #130, full size, \$350; 9' surfboard, \$100; air conditioner, \$60. Frank Rumph, 588-3565.

BOTTLES - glass, gallon; handled boxes; 13", 14" & 15" rims. Dolores, Ext. 2950.

CAMERA EQUIPMENT - old, used; large wall mirror, unframed, \$5; antique mirror, \$5; trunk, \$5. 475-1254.

GUITAR - electric, white; skateboard, large, almost new; trumpet for student, silver. 394-1868.

U-PICK PUMPKINS - weekends, 9 a.m.-6 p.m., Beaver Dan Road, Brookhaven Hamlet.

### Free

KITTEN - adorable, orange, 14 weeks old, litter trained. Ext. 2679 or 472-6922.

GOLDEN RETRIEVER - male, 3 years old, w/papers, needs home w/fenced yard. 472-4518 after 6 p.m.

KINDLING WOOD - 3' high stack, cedar/spruce, seasoned stockade pickets. Brian, Ext. 4939 or 234-9487.

THANKS - to Fun Olympics green team for supreme effort, congratulations purple, Capt. Rich.

### Yard Sales

SHIRLEY - various household items, furniture, organ, computer, etc., Oct. 3-4, 56 Appel Dr., E. Shirley. 399-1868.

SHOREHAM - Oct. 3-4, 22 Akrou Place, off Randall Road. Uli, Ext. 2341 or 821-2716.

RIDGE - craft & fabric sale, Oct. 4, 10 a.m.-5 p.m., Oct. 5, noon-5 p.m., Longwood Road, to Smith Road, north to Strathmore Condos.

BELLPORT - everything goes, 16' Hobie free, Oct. 3, 10 a.m.-4 p.m., 20 Gen. McLean Drive.

### Lost & Found

Lost - Steel frame bifocal glasses, black case. Bookless, Ext. 5262.

LOST - at picnic, Sept. 19, diamond-cut gold chain. Charlie, Ext. 3897.

### Car Pools

FLUSHING, QUEENS - to form car pool. Zygmunt, Ext. 7772.

LIE EXIT 54 - Wicks Road, driver needed for 4 man car pool, 8:30 a.m.-5 p.m. Mike, Ext. 2705.

### Real Estate

Real Estate advertised for sale or rent is available without regard for the race, color, creed, sex or national origin of the applicant.

### For Sale

MASTIC BEACH - 3 bdrm. ranch, wooded 1/4 acre w/fenced in yard, eik, ceramic-tiled full bath, l/r, w/w, city water, \$99,900. Ext. 4939 or 281-7419.

PORT JEFFERSON - 4 bdrms., 2 1/2 baths, M/D possible, family rm., bsmt., patio, extras, 3-village schools, \$210,000. 928-0281.

DAVENPORT, NY - in Delaware County, 5.38 acres w/stream, walking distance to state land, deeded fishing rights to Charlotte Creek. 281-4871 after 6 p.m.

EASTPORT - 2 bdrms., 1 bath, large l/r, full bsmt., 100x120 property nicely landscaped, good location, close to schools & shopping, \$115,000. Terry, 282-2232 or 325-0835 after 5:30 p.m.

EASTPORT MANOR - 1 acre, on dead-end, very private rd., Ray, 821-3955.

MILLER PLACE - 5 bdrm. custom ranch, entertainment area, l/r, d/r, family rm., custom f/p, north of 25A. 473-5786.

RIDGE - Strathmore Condominium, 2 bdrm. ranch, central a/c, w/w, 4 appl., low maintenance fees, 5 min. to Lab, \$85,500. (202) 462-1676 or (301) 721-0638 after 6 p.m.

### For Rent

ROCKY POINT - 2 bdrms., oil heat, city water, big back yard, \$600/mo. sublease. Jurg, Ext. 3423 or 821-3243.

MIDDLE ISLAND - 1 bdrm. Artist Lake condo, incl. gas, heat, swimming pool, club house, etc., avail Oct. 8, \$630/mo. 331-2025.

SETAUKET - Strongs Neck, small 3 bdrm. house, f/p, central a/c, excel. location, avail. immed., \$950/mo. + util. 286-3662 after 4 p.m.

BLUE POINT - 2 bdrm. house, l/r, new kit. & bath, d/r, w/d, central a/c, f/p, w/w, bsmt., fenced yard w/shed, 1/4 to Nicolls rd., 20 min. to Lab, \$800/mo. +. Henry, Ext. 5110 or 399-3087.

HILTON HEAD, SC - 2 bdrm. condo, sleeps 6, pool, beach, tennis, golf, some Oct. & Nov. openings, \$300/wk. 585-9149.

HAMPTON BAYS - 2 bdrm., furnished, waterfront, avail. Oct.-May 15, \$440/mo. + util. 728-2104 eves.

NORTH SHIRLEY - 2 rm. apt., furn. bdrm. w/sky-light, eik, w/w, private ent., 5 min. to Lab, 1 person only, non-smoker, no pets, security, \$475/mo. incl. util. 281-8044.

GORDON HEIGHTS - 3 bdrm. ranch, l/r, eik, 2 baths, finished bsmt. w/den & bath, 1/2 acre, fully fenced, 2-car garage w/elec. doors. 928-6930.

CENTER MORICHES - 1 bdrm., sunny, spacious, near shops, \$300/mo. 878-0357.

CENTER MORICHES - 2 rm. apt., walk to stores, doctor, post office, private ent., single or couple, no children, no pets, \$350/mo. + elec. & 1/2 heat. Ext. 4904 or 4672.

PATCHOGUE - La Bonne Vie Apt., 2 bdrm., 3 appl., all carpeting, excel. cond. Rich, Ext. 4216.

CALVERTON - 2 bdrm. cottage on the lake, l/r, sun porch, large kit., skylights, completely remodeled, winter rental, avail. Oct. 15-April 15, \$650/mo. +. Ext. 3430.

SOUND BEACH - near Rocky Pt., apt. in 1/2 house, 2 bdrm., bath, kitchen, l/r, block from L.I. Sound, \$650/mo. 473-6432.

MEDFORD - 1 bdrm. apt., brand-new, spacious, eik, large l/r, full bath, w/w, a/c, \$650/mo. + 1 1/2 mo. sec., cable & utilities incl. 758-4368.

CATSKILLS - 3 bdrms., w/separate sleeping loft, fully furnished, great for fall foliage, deer hunting & skiing, near Hunter & Windham Mts., avail. day/week/weekends. Judy or Kay, Ext. 3595 or Bea, Ext. 3642.

BROOKHAVEN HAMLET - 1 bdrm. apt. in country home, large l/r, kitchenette, bath, furnished, working, mature adult. 286-0129.

MIDDLE ISLAND - 3 bdrms., 2 baths, eik, f/p, 2 story on wooded 2 acres, carport, avail. Nov. 15, \$900/mo. Ext. 3675 or 924-3528.

### Wanted

TICKETS - 3, Ariadne auf Naxos, Metropolitan Opera, evening Oct. 10, prefer balcony or family circle. Ext. 5301 or 4619.

BABYSITTER - for 6-month-old boy, afternoons. 821-0754.

HOUSEMATE - quiet area, 15 min. to Lab, \$415/mo. incl. util., security required. 758-4591.

COMPOUND BOW - good to fair cond., 45-60 lb., adjustable pull. Lou Pergola, Ext. 3499.

LOVING HOME - for eight-week-old gray/white long-haired kitten. Lois, Ext. 2959 or 744-0673.

### Services

Services are listed as a courtesy to BNL employees. They are neither screened nor recommended by the Bulletin.

RUG SHAMPOOING - very reasonable, Lab discount. 924-6014, leave message.

JEWELRY REPAIR - gold & silver, rings, chains, etc. Dan, Ext. 2319.

CALLIGRAPHY - for all occasions, envelopes, invitations, place cards, etc. Andrea, 821-0260.

TREE STUMP GRINDING - Bob, Ext. 4434 or 727-2346.

BRICKWORK - patios, walks, swimming pools, Belgium block, landscape ties, repairs, Lab discount. Tony, 698-9274.

HOUSECLEANING - flexible hours, Monday-Friday, reasonable, ref. available. Ext. 5068 or 585-