

*Season's Greetings*

# Tips of the Trade

## Linepersons Make Light Work Of Trimming BNL's Tree

*This is the first in a new series of occasional stories highlighting the work and sharing the expertise of BNL's tradespeople and service staff.*

They are prepared to string lights on any Christmas tree up to 55 feet — but BNL's five tower linepersons in the Plant Engineering Division are still waiting for the call from Rockefeller Center.

Every year in the meantime, about two weeks before Christmas, Tower Lineperson Group Leader John Barry Jr. and tower linepersons James Boomer, Bernard Brehm Jr., John Cochrane and Thomas Northam hang strings of 25-watt electric lights from the Lab's designated Christmas tree. For the past ten years, the yuletide tree has been a blue spruce on the corner of Princeton Avenue and Upton Road (see sidebar).

Trimming the Christmas tree is the most glamorous part of the tower linepersons' job. The most notorious is performing emergency repairs in the middle of the night right after a storm. Though the linepersons work 8:30 a.m. to 5 p.m., the five are on 24-hour call to repair any high voltage electrical line and associated equipment that has blown up or fallen down.

"We've put in a lot of Thanksgivings, Christmases, New Years' and other holidays getting the lights back on by 8:30 a.m. the next working day," recalls Brehm.

### Maintaining the Grid

However, most of their regular working hours are spent maintaining BNL's high voltage electrical grid, after 69,000 volts of electricity is delivered by the Long Island Lighting Company to the BNL station on the eastern edge of the Lab.

From there, the tower linepersons are responsible for the electricity's distribution. Electricity goes first to two main substations: the Temple Place 69-kV substation, Bldg. 603; and the AGS 69-kV Fifth Avenue substation, Bldg. 631. There, the

voltage is transformed to first 13,800 and then to 2,400. Finally, about 150 small substations located around site bring the electricity down to 480, 240 and 120 volts for laboratory and office use.

These substations are the domain of Barney Brehm, the stationmaster. He checks the electrical loads, investigates any power dips, and calibrates circuit breakers, relays and the like.

Hundreds of transformers — electrical devices used to transfer electric energy from one set of circuits to another so that the voltage and current change while the frequency remains the same — are used within the substations on site. Tom Northam is responsible for maintaining the oil used to cool the components within each transformer.

Ninety-five percent of the Lab's power transmission lines are buried in underground tunnels, accessed by 300 electrical manholes. Jim Boomer descends into each manhole periodically, to clean and inspect the cables leading from the substations and to the buildings. Above ground, Jack Cochrane oversees the 10 miles or so of BNL transmission lines that remain overhead — from his birds'-eye view in a bucket truck with a 55-foot extension.

The group leader since 1982, Jack Barry just celebrated his 25th service year, having begun work at the Lab as a tower lineperson on December 7, 1964. The group is overseen by James Carroll, Electrical General Supervisor and a former electrician himself.

### Tips From the Experts

While electrical safety is second nature to these pros, the five linepersons recognize that, in celebrating the holidays with electric candles and lights, many BNL'ers could use some advice on the subject. So, BNL's Christmas-tree lighting experts offer these tips from their trade:

"Use only UL [Underwriters Lab-



(From left) Tom Northam, Jack Cochrane, Jim Carroll, Jim Boomer and Barney Brehm. Missing from the picture is Jack Barry.

oratory] tested tree lights and extension cords — and then use according to their directions," advises Jack Barry.

"Don't use indoor lights out of doors," recommends Barney Brehm. "And the smaller, seven-and-a-half-watt bulbs are better for indoor use because they don't get as hot as the larger bulbs."

"Check for bare wires, frayed or dried out cords and loose connections before using," says Jim Boomer. "And don't run cords across heaters or in front of fireplaces."

"Don't overload your circuits with too many multiple-outlet adapters or receptacle strips," warns Jim Carroll, "and if you feel heat in the cords, unplug them."

"Keep live trees standing in water — it is the best way to keep the tree from drying out and becoming a fire hazard," reminds Jack Cochrane.

"Don't leave the tree lit up if it is unsupervised — unplug the lights

when you go out during the day and before going to bed at night," Tom Northam says.

Finally, Northam's tip for an inexpensive holiday gift that ensures electrical safety is a ground fault circuit interrupter (GFCI). Installed like a regular wall outlet or plugged into an existing outlet, a GFCI shuts off current if it detects current leakage — which happens when a person becomes grounded — and thus it can prevent accidental electrocution.

— Marsha Belford



Look for Santa (Firefighter Rich Richard) and his elf helper (Sergeant Chuck LaSalla) on BNL Fire Engine #2 when they make their rounds of the Lab's offices on Friday, December 22, from about 9 a.m. to noon. They will visit the apartment area on Christmas Eve, Sunday, December 24, starting at around 11 a.m. As a holiday appetizer, they'll be handing out candy canes — compliments of the members of BNL's Fire & Rescue Group.

## Green Light, Go; Red Light, Stop!

Drivers are reminded that the traffic light at the intersection of Brookhaven Avenue and Upton Road is now operating weekdays from 11:45 a.m. to 1 p.m. Please be particularly alert at that intersection while drivers adjust to this change.

## Arrivals & Departures

### Arrivals

Mitchell V. Sussmaan .....S&EP  
Flemming Videbaek .....Physics

### Departures

This list includes all employees who have terminated from the Laboratory, including retirees:  
Claudio Pellegrini .....NSLS

## O Christmas Tree, O Christmas Tree . . .



A 12-foot Moerheim blue spruce was set into the ground on the corner of Princeton Avenue and Upton Road by a Plant Engineering grounds crew on November 21 — just in time for winter and the Christmas holiday.

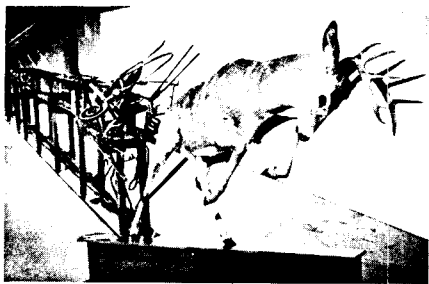
The 15-year-old transplant was planted in the same spot where a 20-foot Koster blue spruce had stood for the past ten years — until it was destroyed during a tornado-like storm last July.

After heavy-equipment operator John Popielaski dug a hole for the new tree's roots with a backhoe, Howard Bell (left) used a forklift to position the tree, while (standing, from left) Jack Kulesa, Paul Williams, Larry Jones and Richard Gagliardi planted it with topsoil and staked it for stability. The planting was supervised by Superintendent of Site Roy McWilliams (right).

According to Lustgarten Baier nursery, the *Picea glauca* Moerheim is denser and bluer than its predecessor, but is just as slow growing: It is expected to average five inches a year.

# Lighting the Candle Of Grand Unification

The lighted candle on the Bulletin's holiday cover stands within the sculpture *Standard Model (abandoned)*, which was created by Brooklyn artist Stephen Rueckert, inspired by BNL's physics research and big machines, and displayed at the Lab during August and September.



Unlit within one of four glass display cases etched with physics equations, the tallow candle is a major element of Rueckert's eclectic sculptural interpretation of a linear accelerator. The candle symbolizes grand unification, theoretical attempts to unite three of the four fundamental interactions — strong, electromagnetic and weak — into one unified force.

Before *Standard Model (abandoned)* was disassembled for a gallery exhibit elsewhere, the Bulletin persuaded Rueckert to kindle the wick and BNL photographer Roger Stoutenburgh to record the burning candle's image.

Lit, the candle also represents grand unification — the unity of diverse peoples celebrating the season's different holidays and the winter solstice. Standing for the eternal light that humankind seeks within and beyond ourselves, the candle offers us hope and inspiration in solving our universal problems.

The Bulletin wishes the Laboratory community radiant holidays filled with light bright enough to kindle the heart, illuminate the mind, and dispel the darkness and cold of a long winter's night.

## 'Tis the Season for Giving, so . . .

### Give Blood

So far, only half the usual number of donors have signed up to give blood at the annual BNL winter blood drive, to be held on Wednesday and Thursday, December 20-21.

It's the holiday season, but accidents and health problems take no holiday. A healthy blood supply will be urgently needed over the long holiday weekend that follows the BNL blood drive.

Because the Lab held a special, one-time drive in September, this is the third time this year that BNL'ers are being called upon to donate blood. Blood drive chair Susan Foster hopes you will answer the call one more time.

"Please care enough to give the gift of life," she said. "You will not know the details of your giving, but the families of those who get help will know that the simple kindness of a stranger is the greatest gift of all."

For more information, call Foster, Ext. 2888, or contact the blood program captain for your department or division.

### Give Gifts

Today is the last day of the Winter Holiday Sales at the Science Shop in the Exhibit Center/Science Museum. So, if you're still looking for the perfect gift or stocking stuffer, be sure to stop in between 10 a.m. and 3 p.m. today.

The Science Shop is located on the west side of Bldg. 701. Park in the north parking lot. For more information, call Public Affairs' Tour Program, Ext. 4495.

## Volleyball

### Standings as of December 8

Open League		League I	
Magnum	22-2	Uptagrab	24-3
GTEAM	21-3	Dinkers	21-6
Jet Setters	12-12	Cannonballs	18-9
Dig It	10-14	Xrayted	14-13
Me & the Boys	10-14	Up-Setters	7-23
Phoenix	9-15	Rude Dogs	7-20
Penetrating		Network News	6-21
Vollies	0-24		
League II		League III	
Fossils	21-3	Lethal Women	17-1
Nuts & Bolts	20-4	MISfits	14-7
Chunga's		High Volley'em	12-6
Revenge	12-12	Nutcrackers	12-6
Pteropods	14-10	Good Timers	8-10
Net Wits	10-14	Bad Gnus	6-12
Sourcerers	10-14	Renegades	7-11
Upton-Ups	6-18	Turkeys	4-14
Slammers	3-21	Spikes	4-17

## Bowling

### Week of December 4

#### White League

John McCarthy had a 291/207/618 scratch series, Ed Sperry 204, Starr Matone 192, Mary Scheidet 184.

#### Purple League

Paul Callegari had a 233, Ben Belligan 223, Ed Sperry IV 214, Vito Manzella 201, Joe Ferrante 201 and converted the 6/7 split, Cheryl Miezianka 182/181. Pat Manzella 182, Gil Spira converted the 6/7/10 split.

#### Red/Green League

K. Riker had a 255, C. Bohnenblusch 220, J. Ferrante 215, R. Larsen 213/210, R. Jansson 213, C. Scarlett 213, H. Dawson 210, M. Guacci 209, E. Carter 204/200, F. Hohmann 204, N. Parrinello 201.

### Week of November 27

#### Pink League

M. Reynolds had a 182, R. Rosati 174, D. Keating 171, T. Ryan 169, P. Meehan, 165, F. Simes 165, C. McNulty 162, J. Colman 160.

#### White League

Ken Riker had a 211/207, Ed Sperry 200.

#### Purple League

Carl Murray had a 241, Ellie Adams had a 184 and also converted the 6/7/10 split, Fran Brown 181, Marilyn Picinich 181, Pat Manzella 180.

#### Red/Green League

P. Ouvrard had a 221, G. Meinken 213, K. Riker 213, R. Larsen 211, D. Jesaitis 210, E. Carter 202.

and Jim Petro; Group 2, Bob Meier and Dan Mullaly; Group 3, Bryan Culwick and John Dabrowski; Group 4, Robert Kelly and Richard Schonberg.

Awards for the best year-round performances in BGA tournaments went to John Millener, for gross score standings, and Dennis Malloy, for net score standings.



Roger Stoutenburgh

## Golf Champs

The BERA Golf Association's (BGA) rain-plagued 1989 season came to a close recently with the completion of the team and individual league play-offs. Shown here are team league champions Bob Mills (left) and Steve Heald, who defeated Ted Erickson and Gene Hassell in the final match. Heald, who was the individual league's regular season Group 1 winner, also took the individual league play-off championship in a close match with Bob Lofaro.

Other individual league winners during the regular season were: Group 2, Dave Kirby; Group 3, Otto Kammerer; Group 4, Jae Jo.

Regular season winners in the team league were: Group 1, Jack Detweiler

## Local Users Group

The next meeting of the Upton Local Users Group (LUG) will be on December 20, at 10:30 a.m. in Room B, Berkner Hall. All interested users are welcome. For more information, call Zohreh Parsa, LUG Chairperson, Ext. 4748.

## Amateur Radio Club

The BERA Amateur Radio Club will meet in Berkner Hall, Room A, on Thursday, December 21, at noon.

The agenda includes the progress of the UHF repeater, amateur radio licensing classes and upcoming events.

All licenced radio amateurs employed at the Lab, those wishing to obtain amateur radio licenses, and Lab guests are invited to attend.

For more information, contact Andy Feldman, Ext. 3264, or Bob Bacharach, Ext. 7790.

## 1990 NYC Train Trips

This is the only time that the 1990 schedule of special trips to New York City (NYC) via the Long Island Rail Road (LIRR) will be published in the Bulletin, so clip and save the information below. All fares are subject to change pending LIRR rate increases.

• **Saturday trips** — The Patchogue-Medford Library, 54-60 East Main Street, Patchogue, will run trips to NYC the third Saturday of every month. Riders should be at the Patchogue LIRR station between 8:15 and 8:30 a.m., and look for the person wearing the red "PML" baseball cap. Round-trip tickets cost \$6 per person and must be picked up at the library's main desk at least two weeks before the trip. For more information, call the library's AV Office, 654-4700, Ext. 20.

• **Wednesday trips** — The Brookhaven Tour group will run NYC train trips on the first, third and fifth Wednesdays of each month, leaving from Patchogue at 7:55 a.m. The cost is \$6.50 per round-trip ticket; children under five ride free. For reservations, send a check payable to Cash to: Diane Weid, 645 Old Medford Avenue, North Patchogue, NY 11772. Checks must be received by the Monday before a trip and should include your phone number and the trip date. For more information, call Weid at 475-2394.

Wednesday trip dates are:

January 3, 17, 31	May 2, 16, 30	September 5, 19
February 7, 21	June 6, 20	October 3, 17, 31
March 7, 21	July 18	November 7, 21
April 18	August 1, 15, 29	December 5, 19



## Dinner Menu — Brookhaven Center

Beginning Monday, December 18, dinner will be served only at the Brookhaven Center, from 5-7 p.m. or until the dinner crowd subsides. On the menu will be:

Monday: Chicken cordon bleu w/rice pilaf	3.65
Tuesday: Minute sirloin steak w/maitre d'hotel butter & grilled tomato	4.25
Wednesday: Boneless roast loin of pork w/new potatoes	3.65
Thursday: Barbecued fresh spareribs w/garden salad	3.55
Friday: Fish & chips platter w/coleslaw	3.10

All dinner entrees include the vegetable du jour and dinner rolls.

## Cafeteria Menu

### Luncheons:

#### Monday, December 18

Soup: Split pea	.75/.95
Entree: Stuffed shells w/garlic bread & 1 veg.	3.10
Entree: Two knockwurst & sauerkraut	3.10
Fitness fare: Broccoli quiche w/1 veg.	3.00
Carvery: Pastrami sandwich	2.85
Grill: Reuben	2.85

#### Tuesday, December 19

Soup: Potato leek	.75/.95
Entree: Veal & peppers over noodles	3.10
Entree: Chicken Parmesan w/1 veg.	3.10
Fitness fare: Cheese & veg. casserole	2.75
Carvery: Roast beef sandwich	2.85
Grill: Monte Cristo	2.85

#### Wednesday, December 20

Soup: Puree of split pea	.75/.95
Entree: Steamship round of beef	3.45
Entree: Stuffed Rock Cornish game hen	3.25
Entree: Roast loin of pork w/gravy	2.85
Full dinner: including entree, 2 veg., dessert & med. drink	3.95

#### Thursday, December 29

Soup: Tomato rice	.75/.95
Entree: Honey-dipped chicken w/1 veg.	3.10
Entree: Franks & beans w/1 veg.	2.85
Fitness fare: Seafood linguini w/1 veg.	3.10
Carvery: Baked ham sandwich	2.85
Grill: Reuben's brother	2.85

#### Friday, December 30

Soup: Manhattan clam chowder	.75/.95
Entree: Catch of the day w/1 veg.	3.10
Entree: Beef Stroganoff over noodles w/1 veg.	3.10
Fitness fare: Tuna melt w/1 veg.	2.75
Carvery: Hot roast turkey w/cranberry sauce & gravy	2.85

### Breakfast Specials - all w/juice, coffee or tea

Mon.: 2 eggs, 2 strips of bacon, 2 pancakes	2.65
Tue.: Western omelette, french fries & toast	
Wed.: Spanish omelette, home fries & toast	
Thu.: Scrambled eggs, cheese & chopped ham on a croissant	
Fri.: 2 eggs any style, 2 slices French toast, grilled ham, hash browns	

## BROOKHAVEN BULLETIN

Published weekly by the Public Affairs Office for the employees of BROOKHAVEN NATIONAL LABORATORY

ANITA COHEN, Editor  
MARSHA BELFORD, Assistant Editor  
LIZ SEUBERT, Reporter

35 Brookhaven Ave., Upton, N.Y. 11973  
(516)282-2345

## In Stormy Weather: Dial 282-INFO

### Swim Club

In the 25-meter pool at the Mid-Island YM-YWHA in Plainview on Saturday, November 4, Wlodek Guryń bettered Toshi Sugama's BNL Swim Club record in the 200-meter breaststroke by more than four seconds, and Peter Heotis improved his previous club record in the 200-meter freestyle by almost two seconds.

In addition, the team scored 125 out of a possible 150 points towards the 1989-90 Empire State Masters Swimming small-team award.

50-meter Freestyle		
Peter Heotis	28.94	1st men 35-39
200-meter Freestyle		
Peter Heotis	2:27.06#*	2nd men 35-39
50-meter Butterfly		
Peter Heotis	31.55	1st men 35-39
100-meter Butterfly		
Peter Heotis	1:13.24	1st men 35-39
50-meter Backstroke		
Ron Wittlock	38.98	1st men 55-59
100-meter Backstroke		
Ron Wittlock	1:24.57	1st men 55-59
Roger Klaffky	1:31.18	3rd men 45-49
200-meter Backstroke		
Ron Wittlock	3:09.50	1st men 55-59
Roger Klaffky	3:27.00	3rd men 45-49
50-meter Breaststroke		
Wlodek Guryń	38.65*	1st men 35-39
100-meter Breaststroke		
Wlodek Guryń	1:25.83*	1st men 35-39
Roger Klaffky	1:34.87	4th men 45-49
200-meter Breaststroke		
Wlodek Guryń	3:04.41#	1st men 35-39
100-meter Individual Medley		
Wlodek Guryń	1:20.09	1st men 35-39
Roger Klaffky	1:27.60	3rd men 45-49

# indicates BNL Swim Club record  
\* indicates personal record

## Classified Advertisements

### Placement Notices

The Laboratory's placement policy is to select the best-qualified candidate for an available position, with consideration given to candidates in the following order of priority: (1) present employees within the department and/or appropriate bargaining unit, with preference to those within the immediate work group; (2) present employees within the Laboratory as a whole; and (3) outside applicants. In keeping with the Affirmative Action plan, selection decisions are made without regard to age, race, color, religion, national origin, sex, handicap or veteran status.

Each week, the Personnel Office lists new personnel placement requisitions. The purpose of these listings is, first, to provide open placement information on all non-scientific staff positions; second, to give employees an opportunity to request consideration for themselves through Personnel; and, finally, for general recruiting purposes. Because of the priority preference policy stated above, each listing does not necessarily represent an opportunity for all candidates. As a guide to readers, the listings are grouped according to the anticipated area of recruitment.

Except when operational needs require otherwise, positions will remain open for one week following publication date.

For further information regarding a placement listing, contact the Employment Manager, Ext. 2882.

**The vacancies listed below have been exempted by the Director's Office from the current freeze on open requisitions.**

**LABORATORY RECRUITMENT** - Opportunities for Laboratory employees only.

4134. TECHNICAL POSITION - Requires BS in chemistry, engineering or related field, or equivalent experience. Responsibilities will include a wide range of duties with regard to operations conducted at the hazardous waste management site. Duties include the on-site transport, handling and packaging of chemicals and radioactive materials, the operation of light and intermediate range machinery, the maintenance of protective equipment and record keeping. Safety and Environmental Protection Division.

**OPEN RECRUITMENT** - Opportunities for Laboratory employees and outside applicants.

4135. ENGINEERING POSITION - Requires a BS/MS in chemical or environmental engineering, substantial experience in hazardous waste management, and strong background in project management. Responsibilities will include oversight of Laboratory's waste minimization program, facility decommissioning planning, and coordination of waste management and environmental restoration projects. Familiarity with environmental regulations, quality assurance and health physics is highly desirable. Safety and Environmental Protection Division.

4136. ENGINEERING POSITION - Requires a BS/MS in chemical or environmental engineering and substantial experience in waste management and/or environmental restoration. A strong background in project management and experience

working with regulatory agencies and remedial action contractors is also required. Familiarity with CERCLA/RCRA regulations and quality assurance is highly desirable. Safety and Environmental Protection Division.

4147. ENGINEERING POSITION - Requires MS in environmental science or equivalent and experience addressing National Environmental Policy Act (NEPA) and N.Y. State Environmental Quality Review Act (SEQR) requirements pertaining to research and/or operations that potentially impact the environment. Requires previous experience writing/presenting environmental evaluations and environmental impact statements to federal/state agencies. Safety and Environmental Protection Division.

### Motor Vehicles & Supplies

86 MONTE CARLO - Supersport, T-top, loaded, v.g. cond., asking \$9,000. Kerry, 878-4757.

86 CITATION TRAILER - 5th wheel, 1986, 12V/gas refrig. freezer, 4-burner stove, oven, full bath, \$9,800. Ext. 3457 or 732-1913.

86 FORD VAN - Hi-top, Captain's chairs, ac, TV, VCR, etc., asking \$11,000. 924-8718.

86 CHRYSLER FIFTH AVE. - silver gray int., loaded, all extras, p/sunroof, new tires, 60k mi., excel. cond. John, 878-4414.

85 NISSAN 200SX XE - h/b, 29k mi., ac, p/s, p/w, 5-spd., loaded, \$6,700. Bob, 744-4879.

85 FORD BRONCO - 64k mi., loaded. Paul, 581-1999.

85 PLYMOUTH RELIANT - a/t, ac, p/s, p/b, white, 74k mi., good cond., \$2,500. Roger, Ext. 2411.

85 PLYMOUTH HORIZON - 5-spd., clean, many new parts, must sell, asking \$2,100. Jack, Ext. 5565.

85 DODGE CHARGER - a/t, ac, p/s, p/b, sky blue, excel. cond., \$2,900. Carol, 928-7734.

84 ARIES - 4-dr., ac, p/s, p/b, low mileage, clean. 369-0432.

84 HONDA AERO 125 MOTOR SCOOTER - 8k mi., new battery, rides 2 persons, good cond., reliable, \$450. Frank, Ext. 7519 or Vita, 277-0464.

84 DODGE OMNI 2.2L - a/t, black, ac, p/s, p/b, clean in & out, runs well, asking \$1,000. Joe, Ext. 3893 or 653-4836.

84 RENAULT ALLIANCE - p/s, p/b, 4-dr., 5-spd., v.g. cond., \$1,300. Carlos, Ext. 4528 or 3097 eves.

84 FORD F150 PICKUP - 4wd, a/t, p/s, am/fm cass. stereo, black, red int., good cond. Betty, Ext. 2541 eves or 758-2653 days.

88 CHEVY CAVALIER - 27k mi., p/s, p/b, ac, a/t, excel. cond., \$6,500. Chris, Ext. 7636.

86 SUBARU GL-10 - 4wd, turbo wagon, 5-spd., every option, 3-yr. unlimited mile warranty, excel. cond., \$8,000. Henry, Ext. 4547 or 727-7227.

85 DODGE OMNI GLH - turbo, 18k mi. on new engine, new tires, clutch, alt., clean in & out, fast, \$3,200. Charlie, Ext. 7638.

85 LEBARON GTS - leather int., turbo, fully loaded, 65k mi., \$4,300. Frank, Ext. 2343 or 732-5950 after 5 p.m.

84 COUGAR - a/t, p/s, p/b, ac, tint. windows, 79k mi., excel. in & out, ask. \$4,000. Pat, 732-6569.

84 JEEP CHEROKEE - red, 4-cyl, 5-spd., ac, p/s, 65k mi., limited edition, rims & tires, asking \$6,700. 288-5469.

83 DATSUN 280 ZX - turbo, loaded, excel. cond., needs minor body work, \$1,500, take over payment. 437-9132.

83 RABBIT - diesel, 147k mi., runs well, trailer hitch, \$500. Ext. 4474 or 929-5699.

83 SENTRA - new factory clutch, Bridgestone tires, brakes, excel. cond. in & out, asking \$1,500. Michelle, Ext. 2077.

82 CHEVY CAMARO - V-6, 4-spd. trans., p/s, p/b, louvers, new paint, \$3,000. Marion, Ext. 4776.

82 DODGE ARIES WAGON - p/s, p/b, a/t, am/fm cass., v.g. cond. in & out, ask. \$2,100. Tim, 727-7741.

81 COUGAR LS - 4-dr., p/s, p/b, a/t, p/w, ac, new transmission, runs well, \$1,000. 363-6447.

81 TOYOTA STARLET - 5-spd., sunroof, recently inspected, runs well. Ext. 3784 or 582-3163 after 7 p.m.

81 HONDA ACCORD - 4-dr., 5-spd., excel. cond., \$1,500. Ext. 2793.

81 SUBARU WAGON - 4-spd., 4wd, 5-dr., good cond., must see, \$1,400. David, Ext. 3640 or 345-0326.

80 HONDA ACCORD - h/b, 5-spd., am/fm cass., new brakes, tires, & exhaust system, \$1,000 neg., leave message. 874-3655.

80 FORD E350 CARGO VAN - am/fm cass. stereo, great work vehicle, \$1,500. Henry, Ext. 4547 or 727-7227.

80 BUICK CENTURY - ac, a/p, p/b, p/s, p/w, 4-dr., am/fm stereo, excel. running cond., must sell, \$1,500. Lee, Ext. 3104 after 5:30 p.m.

78 TOYOTA DOLPHIN MOTORHOME - fully self-contained, new paint, sleeps 3-4, excel. cond., \$7,000 neg. 475-3415 after 6 p.m.

76 TOYOTA COROLLA WAGON - 4-spd., new battery, needs work on starter, \$100. 821-6321 after 6 p.m.

76 DODGE ASPEN - 101k mi., engine wonderful, body OK, frame has one bad rust spot, \$200. Judith, 632-7540 or 473-7607.

73 CHEVY PICKUP - 4wd, 33" tires, roll bar, etc., some rust, rebuilt 350 engine, \$3,000. Dan, Ext. 4987 or 698-7322.

65 DODGE DART - slant 6 motor, \$300. Frank, Ext. 2314 or 567-5131.

TIRE - new, 721 Firestone, 235/75R15, Eldo rim, \$35. Ernie, 588-4987.

TIRES - 3, 195/75R14, one new, two w/plenty tread, all on G.M. 5-hole wheels, \$100. Tony, Ext. 3658 or 3637.

TIRES 2, Dunlop Qualifier M/S radial, 225/60R15, 4k mi. old, cost \$225. \$100. Dcn, Ext. 2981.

### Boats & Marine Supplies

19' BAYLINER BOWRIDER - 1988, 125 h.p., p/trim/tilt, am/fm cass., low hrs., full canvas, galv. trailer; 16' Sportcraft Bowrider, 1984, 50 h.p. Mercury, more, \$2,500 neg. Ext. 7125 or 929-8641.

### Furnishings & Appliances

BED - queen-size, 2 yrs. old, \$150; color TV w/remote, \$150; food processor, \$19; electric broom, \$15; 2 dressers; more. David, Ext. 3640.

DINETTE SET - dark pine, 48" round table, 2 leaves, 4 chairs, \$150; dark pine sofa & loveseat, Herculine, \$150. Marie, Ext. 3786 or 473-4034.

KITCHEN TABLE - pedestal, 4 chairs w/vinyl covering, solid wood, good cond., \$150. 821-1827 after 6 p.m.

PRINCESS DRESSER - antique, 2 drawers, original oval mirror, excel. cond., \$450. Henry, Ext. 4547 or 727-7227.

CHAIRS - 2, olive green, velour, French provincial, \$25/each. Ext. 4192.

FREEZER - upright, Westinghouse, 10 cu. ft., \$75. Peter, Ext. 7687 or 744-1112.

FREEZER - Gibson; Hot Point refrigerator; ladder-back chairs, reasonable. 363-7032.

FREEZER - Amana, 16 cu. ft., good cond., \$75. Bert, Ext. 5156 or 581-4436.

KITCHEN CENTER - Oster, hardly used, like new, \$90. 475-1844.

DRY SINK - stereo cabinet, Colonial, pine wood, walnut finish, make offer. Ext. 3509 or 289-9533.

### Tools, House & Garden

SLIDING DOORS - 2, used, Andersen, 6' & 8', \$75/each; fixed window, 4' square, \$20. Anne, Ext. 2666 or 2943.

SNOW PLOW - Meyer, 2 yrs. old, like new, brackets for Dodge, full size, 7 1/2" blade, asking \$1,300. Dan, Ext. 4987 or 698-7322.

### Sports, Hobbies & Pets

ICE SKATES - men's & women's, \$20; American Flyer sled, \$20; space heater, \$20; glass birds, \$10 & \$15. Kathy, 744-2203.

BOY'S BICYCLE - 20", \$20; Fisher Price girl's trike, \$5; Kolcraft carriage/stroller, \$10; child's stool, \$4. David, Ext. 3640 or 345-0326.

STRINGING MACHINE - Rayco, portable, for tennis rackets, \$100. 589-0625.

CLARINETS - student model, \$125; Signet, excel. cond., \$250. Jim, Ext. 3372 or 821-0250.

SKIS - Rossignol w/Salomon bindings, 150cm & 150cm, \$50/pair. Rogers, Ext. 4222.

BICYCLE - adult, 3-wheeler, Schwinn, w/basket, new, \$150. Hurst, Ext. 3844.

BIKE - General, new, 10-spd., won in a raffle, \$100. Ext. 7286 or 581-7656.

VIOLIN - 1/2 size, Suzuki, good cond., \$100. Peter, Ext. 7687 or 744-1112.

PIGEON COOP - 5 1/2" h x 5 1/2" w x 8' l, w/24 nest boxes, good cond., \$100. 281-5792.

BIKES - 2, 20" Ross Apollo, 26" man's Columbia, 10-spd., good cond., make offer. Sue, Ext. 7235 or 395-3529 after 6 p.m.

### Audio, Video & Computers

COMPUTER KEYBOARD - Macintosh, regular, new, \$80. Ext. 3104.

COLOR TV - RCA, 25", console, like new, \$250. Andy, Ext. 2907.

COMPUTER - Commodore 64, Epson Spectrum printer LX-80, disc drive #1541, many accessories, \$500/all. 281-5792.

### Miscellaneous

LEATHER JACKET - black, zip out lining, soft leather, like new, size 36, \$200. Jim, Ext. 8735.

HARDCOVER BOOKS - Victorian Revival, \$20; complete book of fairy tales, \$10; fancy blue tin, \$5. Kathy, 744-2203.

TICKETS - New York Islanders, Jan. 6, 13 & 28, Feb. 17 & 24, March 10 & 27, 2 good seats, \$30/seat. Michael, Ext. 7909 or 325-0447.

BABY ITEMS - dressing table, \$40; crib mattress, \$15; stroller, \$10; baby bath, \$6; humidifier, \$4; \$60/all. David, Ext. 3640 or 345-0326.

BABY'S FEEDING DISH - electric, like new, \$8. 589-0625.

BABY'S SNOWSUIT - & other clothes; walker; dressing table; jolly jumper; toys. Ext. 2238.

MINERALS - fossils, coral, shells & rings. Whitey, Ext. 2913.

CRAFTS - decorated country hats, brooms, hoops, photo albums, picture frames, Xmas items, more. Karen, Ext. 3513 or Lois, Ext. 4904.

CLOTHES - man's sports jacket, new, size 40, \$20. wool sweaters, medium, \$10/ea.; jeans, brown, size 36, \$10. Susan, Ext. 7716.

LIFT CHAIR - Ortho Knetics, like new, \$400. Tina, 563-0543.

STROLLER/CARRIAGE - Aprica, w/matching boot & storage bag, orig. \$160, sell for \$60; Sears child's bicycle carrier, \$15. 744-1917.

SEAFOOD BISQUE - great for the holidays, rich, delicious & fattening. Ruth Ann, Ext. 7774 or 929-6235.

WATCH - Pulsar, man's, gold tone, quartz movement, date, bracelet band, never worn. Bonnie, Ext. 4901.

CHRISTMAS TREE SKIRTS - handmade patchwork, 54" diameter, w/6" ruffle, machine washable, \$65/each. Henry, Ext. 4547 or 727-7227.

CHRISTMAS TREES - you cut or dig, \$5 & \$10; 15 Avon items, \$15/all; foot bath, excel. cond., \$8. 878-6637.

BABY CRIB - sturdy, solid construction, w/spring mattress, \$30; Gerry pack for carrying infant on your back, \$8. Alice Shih, Ext. 3293 or 751-0345.

LEATHER COAT - 3/4 length, inside lining, collar, new, size 40-42, \$200. Joe, 281-8943.

FUR COAT - cross-mink, white, w/hat, worn a couple of times, orig. \$4,500, sell for \$1,000 neg. John, Ext. 4203.

### Free

REFRIGERATOR - GE, 2-dr., harvest gold, needs compressor. Joe, pager 0825 or 728-1859 eves.

### Yard & Garage Sales

MOVING SALE - Queen bed, twin bed, 2 dressers, color TV, baby dressing table, small appl., lamps, more. David, Ext. 3640 or 345-0326.

### Real Estate

Real Estate advertised for sale or rent is available without regard for the race, color, creed, sex or national origin of the applicant.

### For Rent

CORAM - Bretton Woods condo, 2-bdrm. 2 baths, l/r, d/r, eik, w/w, cac, 5 appl., golf, tennis, i/o pool, clubhouse, no pets, \$875 + util. sec. 289-0413.

LAKE RONKONKOMA - 2-bdrm. house, eik, l/r, d/r, \$850/mo. 737-2842 or 286-3231.

MASTIC BEACH - 2-bdrm. apt., priv. ent., gar. for storage, 15 min. to Lab, \$600 includes heat. Jim, 281-2849.

MILLER PLACE - 1-bdrm. apt., lr/kitchen combo., bathroom, spare room. Ext. 2537.

PATCHOGUE - 1-bdrm. house, bay view, gar., \$650/mo. 475-4199.

PORT JEFF STATION - 3-bdrm. house, 2 baths, eik, l/r, d/r, near BNL & SUNY Stony Brook, \$1,300/mo. includes all. 737-2842 or 286-3231.

PORT JEFFERSON VILLAGE - Harbor Hills, 4-bdrm. split ranch, d/r, eik, fam. rm. w/fp, patio, beach & country club privileges, no pets, \$1,050/mo. + util., sec. Ext. 4474 or 929-5699.

QUIOGUE - furn. studio apt., kitchen, bath, l/r-bdrm. combo, w/w, 30 min. from Lab, nonsmoker, \$575/mo., 1 mo. sec. Ext. 4960 or 288-5576.

ROCKY POINT - small house suitable for 1 person, l/r, kitchen, bdrm., bath, 20 min. from Lab, \$450 +/mo., sec., nonsmoker. 744-9423 after 5:30.

SOUND BEACH - 1-bdrm. apt., eik, l/r, priv. ent. w/driveway, off N. Country Road, \$575 pays all. 473-9180 or 821-3306.

STONY BROOK - share Colonial house w/professional, \$350/mo. + util. Jim, Ext. 2183.

STONY BROOK - 1-bdrm. cottage, lr/kitchen, bath, unfurn., walk to village shops, beach, avail. now. \$600/mo. + util. 473-1761.

WADING RIVER - cozy 3-rm. apt., eik, full bath, one person, no pets, nonsmoker, \$500/mo. incl. util., avail Jan. 1. Janet, Ext. 2345 or 929-3910.

WADING RIVER - 4-rm. house, large, shaded backyard, close to Lab, near beach, immed. occupancy, \$600/mo. 437-2881.

MANHATTAN - 2-bdrm. apt., upper east side, 58th St., \$2,100/mo. George, Ext. 4406.

KISSIMMEE, FL - 2 bdrm., 2 baths, full kit., sleeps six, 2 mi. to Disney, 2 pools, playground, week of April 15-22, 1990. John, 924-4262.

HILTON HEAD, SC - 2-bdrm. condo, sleeps six, 2 baths, pool, beach, tennis, golf, \$300/wk., Nov.-Mar., 689-5378.

### For Sale

BELLPORT VILLAGE - 2-bdrm. ranch, lg. liv. area, eik, att. gar., 12'x20', screened patio, fenced yard, goldfish pond, extras, \$135,000. 286-0795.

MASTIC - 3-bdrm. ranch, 1/4 acre, 1 1/2 baths, den, fin. bsmt., deck, appl., house fan, 3 ceiling fans, shed, fence, near school, shopping, 15 min. to Lab, ask. \$115,000. 265-2366 after 6 p.m. wknds.

MASTIC - 3-bdrm. ranch, den, d/r, gar., on 0.375 acre, new windows, w/w, lots of extras, ask. \$128,000. Ext. 2253/3046 or 399-3303.

MIDDLE ISLAND - 3-bdrm. ranch, 18'x24' great room, l/r w/fp, d/r, eik, 1 1/2 baths, skylights, ig pool, sprinklers, deck, more, 5 min. to Lab, \$144,990. 924-8426 eves.

MIDDLE ISLAND - 2-bdrm. co-op, cac, d/w, new appl., pool, tennis, clubhouse, \$69,000. 345-3858.

MIDDLE ISLAND - Lake Pointe, 2 bdrms., l/r-d/r area, w/d, cac, gas heat, wood deck off master bdrm., pool, tennis, clubhouse, ask. \$78,500. Bob, 924-7316.