

Season's Greetings



Distinguished R&D Awards Go to Five BNL Scientists

Yesterday, the five Brookhaven scientists named below became the first recipients of the Laboratory's Distinguished Research & Development Award. BNL Director Nicholas Samios presented each of the five with a check for \$5,000, before taxes, and an engraved memento.

• **Michael Creutz, Senior Physicist, Physics Department,** introduced the method of applying Monte Carlo computer simulations to lattice gauge calculations. This method opened the door to new understanding of major particle physics theories and new calculations of quantities predicted by those theories.



• **Gordon Danby, Senior Physicist, Alternating Gradient Synchrotron Department,** has made seminal contributions to the field of magnet design and superconducting magnet technology, from superconducting beam transport magnets operating in a high-intensity proton environment to magnetically levitated and propelled trains.



• **John Dunn, Senior Microbiologist, Biology Department,** has had extraordinary achievements in areas ranging from basic enzymology and molecular genetics to biotechnology and approaches for sequencing the entire human genome.



• **Benno Schoenborn, Senior Biophysicist, Biology Department,** is the father of structural biology at Brookhaven and a master builder of complex facilities for leading-edge research by the entire structural biology community.



• **Alfred Wolf, Senior Chemist, Chemistry Department,** is an internationally recognized leader in the development and application of biological tracers labeled with short-lived positron emitters, which are used in the medical imaging method known as PET, for positron emission tomography.



Leaving the Lab — After 35 Years or More

When Rudolf Funn drove out from his home in Riverhead on December 27, 1955, he was heading for his first job at BNL — as custodian in the Brookhaven Graphite Research Reactor (BGRR). Now, 36 years later, he will be driving back home to Riverhead on December 27, having retired from his last job at the Lab — as a chauffeur with the Staff Services Division.



Roger Stoutenburgh

Rudolf Funn

"I've enjoyed working here," said Funn. "There's always been interesting people to meet and something new going on. I've moved around in several different jobs on site, and I liked all of them."

Starting work at the BGRR — at that time only five years old, and attracting researchers from all over the country — certainly gave Funn the chance to see many different people. Then, he moved to Motor Vehicles Maintenance and Opera-

tion, where he drove Lab maintenance staff and their equipment to their destinations on site. Two years later, he transferred again, this time to the Division of Plant Maintenance.

"For a while I did grounds work — grass cutting and other maintenance," recalled Funn. Then, in 1964, he became a light driver, and in 1967 a driver. In 1972, the Division changed its name to Plant Engineering. Funn remained there until January 1974, when he took another driving position in the Supply and Material Division for four years.

"But my last move got me the job I liked the best and where I stayed the longest," said Funn. "In July 1978, I became a chauffeur in Staff Services, and that's what I've been doing ever since."

Funn said that he had "always liked driving — the time goes so fast when you're on the road." Also, while the job sometimes entails working early or late, "you know pretty much the night before what you have to do next day," which is convenient.

One of the main reasons Funn liked his work was that it made him feel very much a part of the Lab. "The chauffeurs are the first BNL people that some visitors see," he explained. "It's important that we represent the Lab well."

In addition to going to Kennedy, La Guardia or MacArthur airports to meet or deliver BNL visitors, Funn sometimes picks people up in New York City and later takes them back. One notable passenger was the late I.I. Rabi, a BNL founder and Nobel laureate in physics, who Funn remembered particularly as being "always friendly and pleasant to drive."

Now, Funn's driving will be on the home front, as he and his wife, Ruth, go to see their eldest grandson play football for the University of Maine,

or visit another grandson at Hudson Valley Community College in Troy, New York.

"Our son and daughter, Rudi Jr. and Diane, and our other four grandchildren are here on the Island," said Funn. "So with them, and home repairs that I'll have more time to do, I'll be busy." — Liz Seubert

1991 Holiday Cover Here Comes Santa Claus

The atmosphere in BNL's Child Development Center (CDC) was heavy with eager and anxious anticipation. For this special event, the CDC children had been joined by youngsters from BERA's Upton Preschool, and all were fidgety, totally beside themselves about what to do during the wait.

The CDC extension rang and the word came down: ten minutes.

The countdown to Santa Claus was taken up donning little jackets, hats and mittens, so the children could wait in the yard. With their little eyes peering through the fence and their little ears pricked, the children simultaneously caught the jolly sight and sound of BNL's Santa Claus and his company.

Santa Claus and his chief Elf (played for the ninth year by BNL Firefighter Rich Richard and Sergeant Chuck La Salla, respectively) pulled into the CDC drive in the most unlikely of sleighs — BNL's fluorescent lime-colored Fire Engine #2. Unshaken in their faith, the children's chorus rose up: "Here comes Santa Claus! Here comes Santa Claus!"

Mr. Claus came into the CDC and signed the guest book. He saw the children's mix of delight and concern upon meeting him, in all his larger-than-life, red-suited and white-bearded glory. He conquered their hearts by listening to their wants and wishes for toys and games, and by presenting them each with a coloring book.

As recorded by BNL Photographer Roger Stoutenburgh, the children's reactions of awe, amazement and acceptance typify the spirit of the winter holiday season. And so, in the spirit of the season, the Bulletin and its staff wish its readers happy holidays and a good New Year. The Bulletin also thanks Stoutenburgh and Graphic Designer Alan Schmidtchen for their contributions to this holiday cover.

In Memoriam

Retiree **Leroy Haywood**, who left the Lab in September 1967 as a senior stationary engineer, died on Decem-

ber 3 of complications following a long illness. He was 71 years old.

Haywood began his Brookhaven career on August 30, 1948, as a fireman, stationed in Camp Upton's old and BNL's first firehouse. In January 1949, he began tending boilers as a stationary engineer in the then Architectural Plant & Plant Maintenance Department. He was promoted to his final position in November 1954, and left the Lab in 1967 on long-term disability.

A resident of Middle Island, Haywood is survived by his wife Ruth, their daughter Linda Braun of New Jersey, son-in-law Karl Braun, and three grandchildren: Olivia, Karl and Peter.

A memorial service for **Theodorus J. Sluyters** will be held on Tuesday, December 31, at 11 a.m., at St. Joseph's the Worker Roman Catholic Church, Naragansett Avenue, East Patchogue. A recently retired senior physicist who was Deputy Chairman of the Alternating Gradient Synchrotron Department, Sluyters died on November 17 while vacationing in his native Holland.

Industry Attracted to BNL Booth

Anyone who watched the segment of *GLANCE* that played last week in Berkner Hall learned about technology transfer opportunities available for industry at BNL — and saw the same videotape that was shown to more than 3,000 attendees at the NASA 2001 Conference, held in San Jose, California, the week of December 2.

At this Second National Technology Transfer Conference and Exposition, the videotape was featured at a booth staffed by Eugene Cooper and Dorry Tooker of BNL's Office of Technology Transfer (OTT). Designed to help OTT in advising industry of the unique capabilities and expertise resident at BNL, the booth did its job: Representatives of some 75 industrial firms requested specific information on BNL-developed technologies or capabilities.

Some of those technologies were developed by Brookhaven researchers John Dunn, Paul Kalb, Steven Springston and Mark Ruckman, who presented papers at the conference highlighting their BNL projects. After their talks and at the BNL booth, the speakers also responded to inquiries from industrial representatives.

Shown here at the BNL booth with John Dunn is Dorry Tooker, who said, "U.S. Department of Energy [DOE] Secretary James Watkins has stressed the importance of



getting U.S. industry to understand the role that the national laboratories can play in enhancing U.S. competitiveness. BNL's participation in this conference is an excellent start towards fulfilling this DOE initiative."

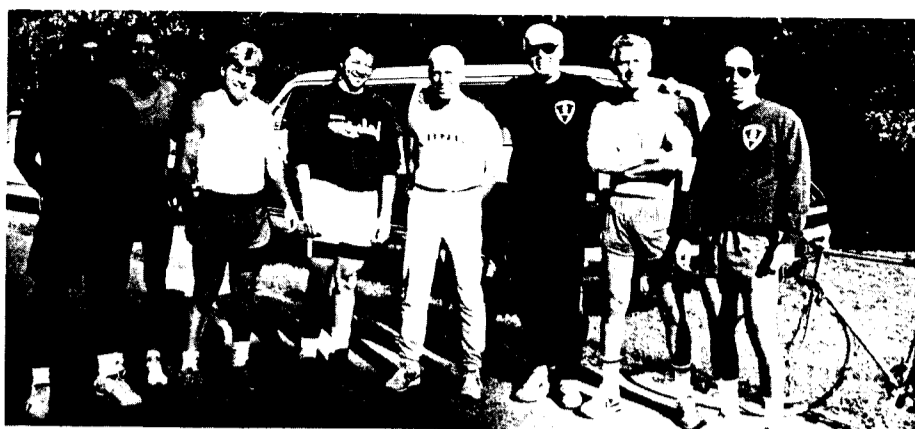
Touch Football Champs

It pays to be bad when you're good at touch football — as demonstrated by the winning Bad Boys team, champs of the 1991 Touch Football League: (back, from left) Nick Spinella, Mike O'Connor, Pete La Salla, Carlos Victoria and (kneeling) Jamie Sims, together with Chris Saxen and Bob Hernandez (not present), took the title by a touch with a playoff score of 21-20.



Roger Stoutenburgh

Police Hold First BNL Biathlon



Eight members of BNL's Police Group participated in the first annual BNL Biathlon on Sunday, October 13. In teams of two — each with one runner and one bicyclist — all eight won awards. First-place \$25 gift certificates went to: (from left) Helmut Theil, who ran the 3.4-mile course in 22.34 minutes, and Ken Baumeister, who cycled the 11-mile course in 33.23, for a team total time of 55.57 minutes.

Other teams were: second place, \$15 dinner gift certificates — (from left) runner Matt Harrington, 21.25, and cyclist Charlie Edwards, 34.58, total 56.23; third place, sports watches — runner Rich Thorp, 22:57, and cyclist Pete Bonti, 33:34, total 56.31; fourth place, gym bags — runner Lenny Butera, 25.27, and cyclist Mike O'Conner, 31.46, total 57.13.

This event was organized by Joanne Giambalvo, a physical training specialist with the Police Group. She said that next year's plans are to open the biathlon to all Lab employees. Prizes were donated by the Long Island Guards Union No. 37.

4,440 Pounds!

That's the record amount that generous BNLers donated to the December Food Drive — the largest amount ever contributed by Lab employees in the three years that BNL has been participating in Brookhaven Town's effort to help our neighbors in need. Thank you!

On Site Today

Open House at the SEC

All are invited to attend an open house from 4 to 6 p.m. today at BNL's new Science Education Center (SEC), Bldg. 438. Located on the south side of Brookhaven Avenue, opposite Berkner Hall, the SEC is the new quarters of the Office of Educational Programs (OEP). Come to the open house to meet the OEP staff and enjoy tours and refreshments.

Winter Holiday Sales

Today is the last day to purchase science-oriented gifts from the sensational selection featured in the Winter Holiday Sales at the Science Store in the Exhibit Center/Science Museum, located on the west side of Bldg. 701. The store will be open today from 10 a.m. to 3 p.m.

Santa Claus is Coming

Driving BNL Fire Engine #2, Santa (Firefighter Rich Richard) and his elf (Sergeant Chuck LaSalla) will arrive in the apartment area at 3 p.m. today, to visit children living on site and give them candy canes, compliments of the Fire/Rescue Group of the Safety & Environmental Protection Division. They'll do the same for BNL employees on Tuesday, December 24, from 10 a.m. on. To make sure Santa visits your building or to arrange a special time, call Ext. 2351.

Need to Shred? Go to Bldg. 650

Almost one ton of sensitive documents have been reduced to shreds since the beginning of November, when the central shredder-baler facility opened for Labwide use in Bldg. 650, on the north side of Cornell Avenue, just east of Railroad Street.

For more information on how to use the shredder-baler to save time while safely disposing of sensitive documents, call BNL's Recycling Coordinator Nelson Tyler, Ext. 2303.

Arrivals & Departures

Arrivals

Donald Bruno.....Accel. Dev.
 Anthony Calligeros Jr.....Plant Eng.
 Timothy M. Carroll.....Accel. Dev.
 John M. Fish.....Reactor
 F. Michael Hemmer.....Accel. Dev.
 Bruce A. Martin.....Accel. Dev.
 Ronald R. Mayo.....AGS
 Edward A. Reynolds.....S&EP
 Paul B. Tamburello.....AGS
 Alonzo P. Werner.....Accel. Dev.

Departures

This list includes all employees who have terminated from the Lab, including retirees:
 George L. Gould.....Chemistry
 Clas-Otto J. Wene.....App. Science

New Pool Season

A new, one-month pool season for January will begin on Thursday, January 2, and end on Friday, January 31. From February 1 to March 31, the pool will be closed for special maintenance.

Tickets can be purchased at the pool during open hours. For this abbreviated season, hours and fees will be as follows:

Monday through Friday
 11 a.m.-1:30 p.m. employees only
 1:30 p.m.-2 p.m. reserved for speed swimming and training employees, families and guests*
 5 p.m.-9 p.m. employees, families and guests*

Saturday and Sunday
 1 p.m.-5:30 p.m. employees, families and guests*

Daily Admissions

Employee or family member \$2.00
 Guest \$3.00

Season Tickets (fees not prorated)

Individual membership \$10.00
 Family membership \$14.00

*Guest ruling for all recreation facilities: One guest per employee is permitted. Advance arrangements for additional guests, up to a maximum of five at any one time, must be made at the Recreation Office, Personnel Division, Bldg. 185. Guests must be accompanied by the employee.

Holiday Notes

The Lab will be closed for a half day on Christmas Eve, Tuesday, December 24, and the entire day on Christmas, Wednesday, December 25, and on New Year's Day, Wednesday, January 1. The following schedules will be in effect:

- **Brookhaven Bulletin** — There will be no Bulletin next week. The classified ad deadline for the Brookhaven Bulletin of Friday, January 3, is 4:30 p.m., on Thursday, December 26.
- **Credit Union** — The Teachers Federal Credit Union will be open Christmas Eve and New Year's Eve, December 31, until 1 p.m., and will be closed Christmas and New Year's Days. The automatic teller machine in the foyer of Berkner Hall will be open throughout the holidays.
- **Food Services** — The Cafeteria will be open for snack bar service on Saturday and Sunday, December 21 & 22, from 9 a.m. to 2 p.m., and Christmas Eve, from 7:30 a.m. to 12:30 p.m.; the Cafeteria will be closed Christmas and New Year's Days. The Brookhaven Center will be closed December 24, 25, 31 and January 1. The vended food service in Bldg. 912 will be in operation continuously.
- **Pool & Gym** — The pool and the gymnasium will be closed December 24, 25 & 31 and January 1.

Fly Tyers Club

When it's too cold to fish, it's just right to get together to tie flies for next season. That's what the members of the BNL Fly Tyers Club do almost every Tuesday. Both fresh and saltwater fly tyers can participate in this enjoyable, relaxing hobby by attending the next meeting on Tuesday, January 7, at 6 p.m., in the Recreation Building. For more information, call Morris Shapiro, Ext. 2366, or Kurt Jellett, 4698.

BROOKHAVEN BULLETIN

Published weekly by the Public Affairs Office for the employees of BROOKHAVEN NATIONAL LABORATORY

ANITA COHEN, Editor
 MARSHA BELFORD, Assistant Editor
 LIZ SEUBERT, Reporter

As 1991 draws to a close, the Editor and editorial staff of the Brookhaven Bulletin gratefully acknowledge the indispensable, year-round contributions of the following people:

- Public Affairs Office**
 Janet Sillas
- Photography & Graphic Arts Division**
 Ken Boehm, Phyllis D'Avanzo, Dolores Janes
- Composition**
 Leo J. Casey, Cyndy Chisare, Michele Dickerson, Dolores Knighton
- Copy Service**
 Jerry Gaeta, Joe Hanson, Marie Ingenito, Kelly Mazzola, Joe Perry, Fred Wunder
- Offset Printing**
 Andy Brems, Kevin Hester, Neal Jackson, Jeff Knighton, Leon Lawrence, Bruce Style
- Photography**
 Stan Cherouski, Peter Horton, Howie Jones, Bill Marin, Helga Pirazzi, Mort Rosen, Joe Rubino, Georgia Schwender, Roy Skarka, Roger Stoutenburgh
- Graphic Design**
 Kathy Foy, Theresa Esposito-Lippo, Alan Schmidtschen, Pat Yalden
- Illustration**
 Whitey Caiazza, Judy Otto, Walter Palais, Irma Reilly
- Staff Services Division, BNL Mail Room**
 Luerine Allen, Selestine Brown, Jean Bunselmeyer, Esther Larios, Frank Norton, Dinorah Silva, Catherine Thomas, Veronica Varlack
- Personnel Division, Personnel Records**
 Louisa Barone, Sharon Goode, Bonnie Miller, Darlene Peragine

35 Brookhaven Ave., Upton, N.Y. 11973
 (516) 282-2345

1992 New York City Train Trips

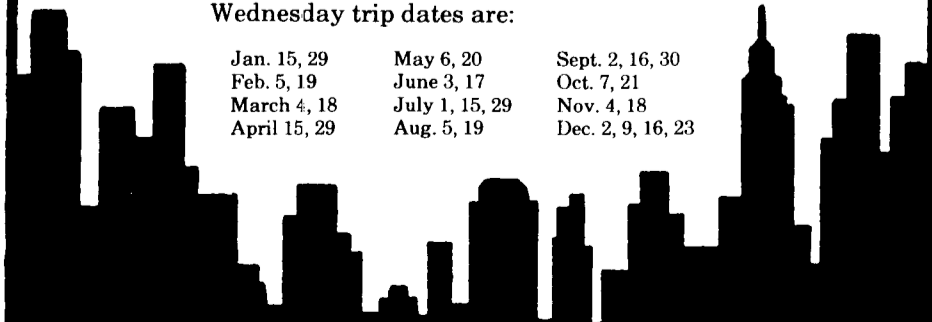
This is the only time that the 1992 schedule of special discounted trips to New York City (NYC) via the Long Island Railroad (LIRR) will be published in the Bulletin, so clip and save the information below:

- **Saturday trips** — The Patchogue-Medford Library runs trips to NYC on the third Saturday of every month. For departure times and ticket prices, call the library's AV Office, 654-4700, Ext. 20.
- **Wednesday trips** — The Brookhaven Tour Group will run NYC train trips on the first, third and fifth Wednesdays of each month, leaving from Patchogue at 7:55 a.m. The cost is \$7.50 per person; children under five ride free. Times and fares are subject to change pending new LIRR schedules and/or rate increases.

A minimum of 30 people is need for each trip. For reservations, send a check payable to Cash to: Diane Weid, 654 Old Medford Avenue, North Patchogue, NY 11772. Checks must be received by the Monday before a trip and should include your phone number and the trip date. For more information, call Weid at 475-2394.

Wednesday trip dates are:

Jan. 15, 29	May 6, 20	Sept. 2, 16, 30
Feb. 5, 19	June 3, 17	Oct. 7, 21
March 4, 18	July 1, 15, 29	Nov. 4, 18
April 15, 29	Aug. 5, 19	Dec. 2, 9, 16, 23



More Free Toothbrushes

More BNL employees, retirees and their spouses age 45 and over are needed to participate in a four-year dental decay-prevention study. Participants must have at least 15 natural teeth, brush daily and be willing to use a free fluoride gel or mouthwash after brushing.

In addition to getting free toothbrushes, Colgate toothpaste and fluoride gel or mouthwash, study subjects will receive no-cost dental exams at BNL at 16-month intervals over their four-year participation.

To sign up, call Health Promotion Specialist Mary Wood, Ext. 5923.

Aerobic Dance & Stretch Classes

It's time to think about burning off those extra calories put on during the holidays — so join the Aerobic Dance Club in January 1992.

Instructor Pat Campbell will lead two different courses of exercise:

- **Stretch classes** involve floor exercises to lengthen, tighten and relax various muscles groups of the body.
- **Aerobic dance classes** emphasize cardiovascular fitness through low-impact, choreographed movements combining calisthenics with dance.

Aerobic dance classes will be held Tuesdays and Thursdays, at the Recreation Building in the apartment area, while stretch classes will be on Mondays at the Physics lounge, Bldg. 510. Classes run from 5:15 to 6:15 p.m.; mats are recommended for both.

Either or both classes may be taken, and each ten-week session of aerobic dance or stretch costs \$30, payable at registration preceding the first classes:

- **Stretch** — Monday, January 6.
- **Aerobic Dance** — Tuesday, January 7, and Thursday, January 9.

For information, call Pat Campbell, Ext. 4853 (a.m.) or Ext. 5070 (p.m.), or Janet Sillas, Ext. 2345.

Bowling

Red/Green League

H. Arnesen had a 223, E. Eggert 220, K. Asselta 217, S. Thompson 216, K. Riker 215, P. Ouvrard 209, T. Prach 207, M. Guacci 204, C. Scarlett 204, A. Warkentien 201.

White League

Ken Riker had a 204, Ed Sperry IV 201, Dick Adams 200, Gerry Riker 194/186, Sharon Smith 190/188, Georgia Irving 190, Elaine Zukowski 188, Fern Simes 183.

Purple League

Mary Ellen Hubner had a 235/196, Phil Radusewicz 225/612 scratch series, Vito Manzella 220, James Goode 215/205/614 scratch, Larry Musso 215, Andy Warkentien 214, Sam Logan 208, John Blydenburgh 202, Diane Lombardi 199, Steve Gushue converted the 4/7/9 split.

Cafeteria Menu

Luncheons

Monday, December 23

Soup: Beef noodle .80/1.10
 Entree: Spaghetti & meatballs 3.20
 Entree: Seafood boat w/French fries 3.20
 Carvery: Hot pastrami sandwich 2.95
 Grill: Philly steak sandwich w/fries 2.95

Tuesday, December 24

Snack bar service — 7:30 a.m. to 12:30 p.m.

Wednesday, December 25

Christmas Day — closed

Thursday, December 26

Soup: Split pea .80/1.10
 Entree: Vegetable lasagna w/1 veg. 3.20
 Entree: Cajun catfish w/1 veg. 3.20
 Carvery: Hot corned beef sandwich 2.95
 Grill: Reuben w/French fries 2.95

Friday, December 27

Soup: Crab bisque .80/1.10
 Entree: Shrimp boat w/French fries 3.65
 Entree: Vegetable casserole w/1 veg. 3.20
 Carvery: Hot turkey sandwich 2.95
 Grill: Chicken melt w/French fries 2.95

Breakfast w/coffee & small juice 2.75
Mon.: 2 eggs, bacon, pancake, home fries
Tue.: Western omelet, home fries, toast
Thu.: 2 eggs, bacon, cheese on croissant, fries
Fri.: French toast, 2 eggs, bacon, home fries

Volleyball

Standings as of December 12

Open League		League I	
Magnum	19-2	Upfagrabs	18-6
G-Team	12-9	Network News	16-8
Phoenix	11-10	Six Pack Attack	15-9
Me and the Boys	9-12	Rude Dogs	14-10
Penetrating Vollies	7-14	Dinkers	13-11
Leftovers	5-16	SetUps	7-17
		Bumps & Sets	1-23
League II		League III	
Monday Night Live	17-1	Renegades	15-3
Net Wits	17-4	Nutcrackers	14-7
Fossils	10-8	High Volley'em	12-6
Night Court	10-8	Over the Top	12-9
Nuts & Bolts	9-9	Good Timers	9-9
Just Ups	7-11	Interns	8-10
Upton Ups	6-12	Sourcerers	6-12
Volley of the Dolls	5-13	Silver Bullets	4-14
Muffits	3-18	Undertakers	4-14

Classified Advertisements

Placement Notices

The Laboratory's placement policy is to select the best-qualified candidate for an available position. Consideration is given to candidates in the following order: (1) present employees within the department/division and/or appropriate bargaining unit, with preference for those within the immediate work group; (2) present employees within the Laboratory; and (3) outside applicants. In keeping with the Affirmative Action plan, selections are made without regard to age, race, color, religion, national origin, sex, handicap or veteran status.

Each week, the Personnel Division lists new placement notices. The purpose of these listings is, first, to give employees an opportunity to request consideration for themselves through Personnel, and, second, for general recruiting under open recruitment. Because of the priority policy stated above, each listing does not necessarily represent an opportunity for all people.

Except when operational needs require otherwise, positions will be open for one week after publication.

For more information, contact the Employment Manager, Ext. 2882, or call the JOBLINE, Ext. 7744 (282-7744), for a complete listing of all openings.

OPEN RECRUITMENT - Opportunities for Laboratory employees and outside candidates.

MK 1024. PROJECT MANAGER - Requires a BS degree in an engineering discipline (advanced degree desired) more than ten years' experience in managing industrial manufacturing of high-technology equipment and/or components, and project-management experience. Will represent the RHIC Project Head in monitoring and managing RHIC accelerator and detector equipment fabrication with industry. RHIC Project.

DD 1022. TECHNICAL POSITION - (term appointment) Requires AAS in electromechanical technology or equivalent, and extensive experience in the construction, assembly and testing of precision electromechanical devices. Additional requirements include ultrahigh vacuum procedures experience, familiarity with electronic test instruments and electronic wiring skills. Accelerator Development Department.

DD 1028. TECHNICAL POSITION - (term appointment) Requires BS in a technical field or equivalent, and demonstrated mechanical and electrical proficiency as well as good communication skills. Must be able to work from blueprints and schematics. Vacuum experience highly desirable. Responsibilities will include the assembly, testing and installation of magnets and associated equipment for use in the RHIC injection beam line. Accelerator Development Department.

DD 1029. TECHNICAL POSITION - (term appointment) Requires AAS in a technical field or equivalent and demonstrated proficiency in both mechanical and electrical fields. Responsibilities will include assisting in the assembly, testing and installation of magnets and associated equipment for use in the RHIC injection beam line. Accelerator Development Department.

LF 5596 DATA SERVICES POSITION - (part-time/term appointment) Requires an AAS degree and experience running applications on the IBM PC, Macintosh and the VAX cluster. Responsibilities include using personal computers and the VAX for data entry, word processing and scanning in the Scientific Information Systems Group. Department of Applied Science.

Motor Vehicles & Supplies

90 MITSUBISHI ECLIPSE - black/white, ac, p/s, p/b, a/t, mint cond. 878-0480.

89 NISSAN SENTRA - 4-spd., sunroof, white, am/fm cass., excel. cond. Georgia, Ext. 2384 or 929-8185 after 6 p.m.

87 FIREBIRD - 6-cyl., a/t, p/s, T-top, 39k mi., white, excel. cond., \$6,200. Ext. 5768.

87 MERCURY SABLE LS & '86 DODGE D-100 PICKUP - w/cap, both excel. cond., must sell. Tom, Ext. 7287 or 744-4535.

86 CHEVY C-10 PICKUP - rebuilt engine w/2k mi., no rust, needs cab, \$2,800. 878-2810.

86 CHEVY CAVALIER - 4-dr., a/t, 126k mi., good cond., \$1,600. Ext. 7696 or 924-2308.

86 ACURA LEGEND - 54k mi., loaded, white, excel. cond. in & out, \$8,250. 281-3322.

86 PLYMOUTH VOYAGER - am/fm stereo, new tires, shocks, struts, battery, good cond., asking \$6,500. 744-9027.

85 SUBARU - 73k mi., 4-dr., a/t, p/s, p/b, p/w, new tires, excel. cond., \$2,800. Ext. 2520/4973.

84 CHEVETTE - h/b, 74k mi., runs well, \$750 neg. Marylin, 286-3508.

84 PONTIAC FIERO - 4-cyl., 4-spd., 48k mi., tinted p/w, cruise, \$2,500. George, Ext. 4590.

84 MALLARD RV - 24', self-contained, dual ac, Chevrolet chassis, excel. cond. 878-1178.

Reminder: New Ad Policy

Real Estate advertisements for property either For Sale or For Rent now run only in the second and fourth issues of the month. Therefore, they will appear next in the January 10, 1992, issue of the Brookhaven Bulletin.

84 FORD ESCORT - tan, 93k mi., h/b, ac, good mech. cond., damaged body, \$500. Anne-Marie, Ext. 2126, or 744-2836 eves.

83 BUICK LE SABRE - high mi., many new parts, excel. cond., real luxury car. 475-8073.

79 HONDA CIVIC - h/b, good basic transportation, \$900. Paul, Ext. 7577 or 286-7127 eves.

79 RABBIT - all or for parts. F.I., 5-spd., 4-dr. Ken, Ext. 4514 or 289-8212.

78 SUBARU - 4wd wagon, runs well, \$400. Jim, Ext. 2765 or 981-7369.

78 MALIBU - high mi., good stereo, many new parts, 2-dr., cb, runs well, \$850. Roy, Ext. 7357 or 878-5886.

76 CHEVY SUBURBAN - 6-cyl., 250 cu. in. eng., new battery & tires, runs well, \$500. Frank, Ext. 7519 or Vita, 277-0464.

76 AMC HORNET - needs starter, \$200. Kathy, 744-2203.

72 TRIUMPH - for parts or restoration, new top, many extras. Ext. 5265 or 698-3870.

70 FORD TORINO - fair cond., \$500. 929-8105.

69 MUSTANG - convertible, aqua blue, \$2,500 in new parts, 6-cyl., 3-spd., must sell, \$6,000. Darcy, 286-8523.

62 JEEP CJ5 - runs, many extra parts incl., must see. Mark, 744-3383 or 821-7172.

29 WILLYS - Knight sedan, runs well, drives well, orig., lots of extra parts, \$3,800 neg. Andy, Ext. 7666.

MOTOR OIL - Valvoline, 10W-40, limited quantity, \$1/qt., 874-4845 after 6 p.m.

DODGE RAM D-50 PICKUP - w/cap, seat in rear w/seat belts, 60k mi., new exhaust, tires, etc., excel. cond., \$3,500. Jim, Ext. 4696.

MOTORCYCLE HELMET - HJC, medium, silver, full face, good cond. w/cover & gloves, \$75. Rod, 878-1580 after 6 p.m.

Boats & Marine Supplies

23 1/2' AQUASPORT - 1987, 200-h.p. Merc., 9.5 Yamaha kicker, Loran, radio, excel. cond., make offer. 878-0480.

18' VICTORIA - tilt trailer, 4.5-h.p. Merc., jib, main, Genoa, cruising spinnaker, VHF, D/F, K/M, sleeps 2, shoal keel, \$3,650. Mike, Ext. 5972 or 744-4579.

17' BOAT - f/g, full canvas, new int., windshield, all access., galv. trailer, excel. cond., 60-h.p. Evin. needs work, \$1,000. 878-1617 after 6 p.m.

Furnishings & Appliances

BAR - w/4 stools, excel. cond., make offer; dining room table, 48" round, w/2 leaves, 5 chairs, dark pine, excel. cond., make offer. Donna, 924-5062.

BEDROOM - dark pine, chest, dresser, double bed, night table, like new, orig. \$2,400, now \$600. 744-9027.

CHEST OF DRAWERS - \$20; tall bookcase, \$20; kitchen table, \$20; misc. small items. Anne-Marie, Ext. 2126 or 744-2836 eves.

COUCH & LOVESEAT - pale yellow, \$200; desk, \$50; king size mattress & boxspring, \$50. Nick, Ext. 2251 or 744-2836.

DRYER - Whirlpool, wheels, apartment size, 115 volt, like new, 3-cycle, white, \$95. Marty, 654-5888.

DINING ROOM - table, 6 chairs, hutch, good cond., \$600 or best offer. Ext. 5265 or 736-1525.

DINING ROOM - Ethan Allen, 42" round table, 12" leaf, 4 chairs, dark pine, \$200. 473-6546.

KITCHEN TABLE - w/2 benches, 2 swivel chairs, 48"x36", wood look Formica, excel. cond. Paul, Ext. 3308.

MICROWAVE OVEN - Litton Minute Master, high power, 1.2 cu. ft., w/variable cooking levels, \$125. Bob, Ext. 4551.

MICROWAVE - Sharp Carousel, excel. 585-4176.

REFRIGERATOR - Admiral, freezer below, 18 cu. ft., frost-free, 2-door, \$75. George, Ext. 3061 or 751-0265 eves/wknds.

REFRIGERATOR - Kenmore, 19 cu. ft., frost-free, white textured finish, excel. cond., 3 yr. old, \$250. Greg, 395-5490, leave message.

WASHER - Whirlpool, 3 yr. old, v.g. cond., \$175. Paul, Ext. 7577.

WATER BED - motionless, queen, 2 yr. old, stained wood w/headboard, heater, liners, asking \$300. Victor, Ext. 4424 or 737-6517.

Tools, House & Garden

FIREPLACE LOGS - full cord plus, seasoned oak, you pick up. \$98. 924-3236.

FIREWOOD - seasoned oak. Joe Scesny, 732-2849.

OIL BURNER - Wayne retention head, Lochinar 40-gallon electric water heater w/circulator pump, best offer. Ext. 4727 or 286-6858.

ORCHID - cymbidium, three-flower sprays, \$25. 727-8631.

POWER TOOL - Freedom, extra shaft, pedal power control, #8A handpiece, collets 1/8" & 3/16. 589-3608.

WOOD STOVE - Vermont Castings, Vigilant, excel. shape, w/chimney pipe & 2 cords of wood, \$1,050. Steve, 722-4821.

Sports, Hobbies & Pets

AMATEUR RADIO - SSB transceiver, Kenwood TS-520SE, digital readout, Mire SWR meter, key, extra speaker, \$425/all. Frank, 732-1384.

BICYCLE - Colnago Master, 56cm, Soloflex, complete. Ext. 3499.

BICYCLE - Raleigh unisex frame, adult, 10-spd., foam grips, luggage rack, high pressure pump, orig. \$200, now \$95. Jack, Ext. 4447 or 744-3919.

BIKE - Huffly Vortex, 20", like new, orig. \$160, asking \$75. Leroy, Ext. 4581 or 286-1615.

BIRD CAGE - Hoesi, large, white, 2-level, like new, \$25. Ray, Ext. 3680.

CAMERA - Nikon F SLR, w/C 43-8bmm zoom lens, w/leather case, \$325. 874-4845 after 6 p.m.

CAMERA - Nikon F3 H.P. MD4 motor drive S.B16, dedicated flash, Tokina 35-200 zoom lens, mint cond. Irv Meyer, Ext. 4309.

CAMERA - Olympus SA, 35mm, w/electronic flash, \$70/all. Ext. 3589.

DRUM SET - Slingerland bass, snare, 3 roto-toms, Zildjian cymbals, hi-hat, hardware. Leon, Ext. 2971.

DRUM SET - Ludwig, 12-piece, professional, black, excel. cond., must see, \$995. Jeff, Ext. 5392.

EXERCISE BIKE - like new, white, \$45; accordion 80 bass, \$45; snare drum, \$20. Frank, 732-1380.

FISH TANK - 10-gallon, complete set-up, tank stand, gravel, filter, heater, hood, light, plants, rocks, \$50; 50-gallon set-up, \$150. Roy, Ext. 7357.

PAINT BALL EQUIPMENT - many different items, for serious ball player. Joe, Ext. 5010.

PUPPIES - Golden Retriever, AKC, shots, vet checked, ready now, 8 wk. old, 3 females, 2 males. Tirre, Ext. 3288 or 281-0360 after 5 p.m.

SKI PACKAGE - Heierling cross country, boots size 37, poles, Technopro skis, 170cm, for 10-13 yr. old, never used, \$70/all. Steve, Ext. 4939.

Audio, Video & Computer

CAMCORDER - Sharp VHS-HQ, like new, 8 to 1 zoom, flying erase head, battery pack, charger, ac adapter, case, tripod. Nancy, Ext. 7996.

CAR PHONE - orig. \$300, sell for \$50; stereo, radio, double cassette, turntable, needs needle, booster, must sell, \$125/all. Kym, Ext. 7247.

CD ROM - Hitachi, external w/SCSI controller & disc, new, in box, \$325. Al, Ext. 2043 or 878-8424.

CHESS - Sensory Challenger, Fidelity, difficulty level 9, like new, \$40. Ext. 3589.

COMPUTER - Atari 800XL, disk drive, daisy wheel printer, color monitor, modem, dozens of programs, manuals, magazines. Leon, Ext. 2971.

COMPUTER - Commodore 64, color monitor, disk drive, joystick, printer interface, many extras, \$250. Pat, Ext. 2836.

COPIER - Mita DC 213 RE, tabletop, excel. cond., reduces & enlarges, auto feeder, \$1,200. 286-6806.

MONITOR - Goldstar VGA, 512k board, new, \$250; 2 H.H. 5 1/4" 360k drives & controller card, \$100. Jim, Ext. 4584.

PRINTER - DEC LA50, serial printer, w/graphics, \$100. Scott, Ext. 7110 or 874-3652.

TV - Sylvania, color, 19", good cond., \$75. Ext. 2041.

TAPE ORGANIZER - VHS tape, holds 24, wood grain finish, \$10; Atari video game, various games, \$30. Pete, Ext. 4581 or 399-2813 after 5 p.m.

VIDEO CAMCORDER - RCA, #CMR 300, auto focus, can play through TV, date/clock display, wide angle lens, \$500. Al, Ext. 2372 or 331-1003.

Miscellaneous

COAT - Persian lamb, woman's gray, size 8/10, full length, good cond., asking \$95. Ext. 4341 or 475-4005.

DESIGNER FRAGRANCES - for women & men, Opium, Eternity & Obsession, Polo, more, 3.3 oz., \$25. Lou Pergola, Ext. 3499 or 732-1028.

FASHION BOOTS - women's, leather, knee-hi, size 6, 2 pairs, 1 brown, 1 black, look brand-new, were \$70/ea., now \$40. Eugene, Ext. 7113.

FLIGHT GARMENT BAG - \$20; woman's ice skates, \$30; artificial Christmas tree, \$45; hanging lamp, \$20; barrel, \$75. Kathy, 744-2203.

HUMMEL PLATES - '78 & '79, still in orig. packaging, \$150/ea. Joe, pager 0925 or Ext. 2898.

MINK COAT - size small, professionally stored & maintained, excel. cond., \$250. 473-6546.

OPERA TICKETS - Mozart *Idomeneo*, Sat. matinee, row K orchestra center, Dec. 21, Levine, Pavarotti. Ext. 3922.

TRADE-SHOW DISPLAY - Nomadic, in stand, orig. cost \$3,000, asking \$800. Al, Ext. 2043 or 878-8424.

WEDDING GOWN - silk organza, new, size 10, cost \$600, selling for \$350. 878-1617 after 6 p.m.

MACRAME HANGERS - many styles & colors, all sizes, incl. 8" or 10" pot, \$13. Laurel, Ext. 4095.