

Wiesenberg Heads CCD

The Computing & Communications Division (CCD) welcomed a new Head on October 22, when Mark Wiesenberg arrived at BNL.

In announcing Wiesenberg's appointment, Deputy Director Martin Blume noted in a memo to the CCD staff, "Mark has had long experience in the management and technical aspects of computing and communications at AIL Systems Inc., a Long Island firm. I look forward to working with him and with you to assure the strength of computing and communications at the Laboratory, as well as the vitality and productivity of the Division."

Wiesenberg takes on the duties formerly held by Arnold Peskin, who announced his decision to step down in July. At that time, Blume had commented, "We anticipate a continuing significant role for CCD in providing computing and communications services to the Laboratory in the years to come. We thank Arnie for bringing us this far."

Upon arriving at BNL last month, Wiesenberg's first act was to hold a meeting to introduce himself to CCD's 86 staff members. Over the next weeks, he plans to meet individually with every staff member, as well with the heads of all Lab departments and divisions.

"My role is to make my face familiar and make it easy for people to get in touch with me, and to share their needs and desires," Wiesenberg said, adding that he can be reached on Ext. 3237, or via Labmail: bnl:wiesenb or wiesen@bnl.

A major part of Wiesenberg's philosophy is to provide service. "The researchers at the Lab have their scientific mission," he said, "and my mission as head of CCD is to support the scientific staff with first-class computing facilities so that they can concentrate on their research."

"I think CCD has a lot of very talented people who are committed to provide the level of service that I would like to see," he continued, "so the challenge is to channel that energy to meet the demands of the distributed computing environment that is becoming prevalent at the Lab."

Towards that end, Wiesenberg said, "We need to have a long-term vision, to create an infrastructure on which to build all the different new technologies that this environment demands. Therefore, I want CCD's plan to parallel the goals of the Lab's Institutional Plan, so we can be sure to support BNL's research from a computing perspective."

In creating that infrastructure, Wiesenberg expects to work very closely with the CCD Steering Committee. "I look forward to their guidance," he said. "They are a good voice for departments' needs."

Wiesenberg also called himself a "big supporter of interaction with other industry, and now, the laboratories." And he advocates having a "sandbox" facility in which to try out new technologies, a concept that he



Roger Stoutenburgh

Mark Wiesenberg

said "exists here to some extent already."

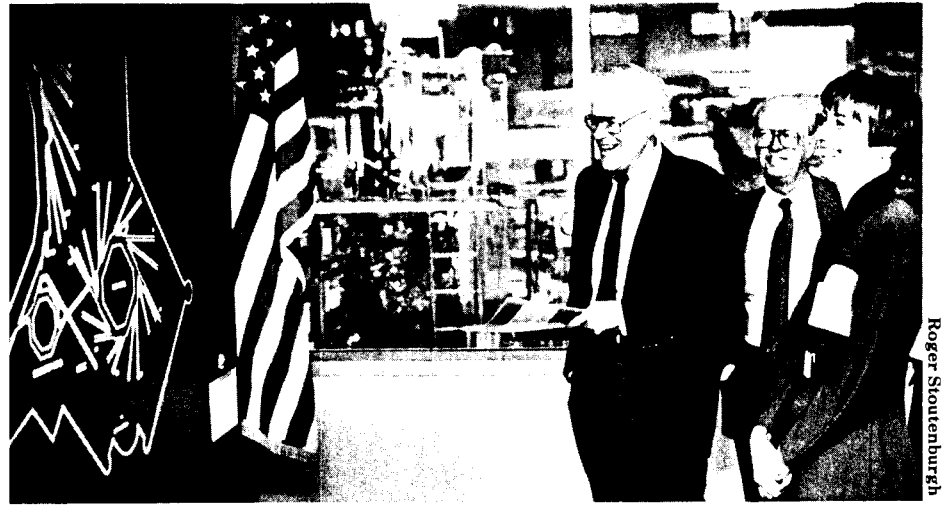
Mark Wiesenberg's 1971 B.S. degree in aerospace engineering at Polytechnic Institute of New York was followed by an MBA from Adelphi University in 1973. Then, he took his business and engineering skills to AIL, where he remained for the next 19 years.

AIL, said Wiesenberg, "has a heavy research environment, not very different from the Lab." He spent 18 of his AIL years in data processing, with a variety of responsibilities, from introducing new technology to project management to telecommunications. He was responsible for providing scientific and engineering support, business computing, telecommunications and end-user computing support.

Wiesenberg lives in East Northport with his wife Pamela, seven-year-old son Joseph and four-year-old daughter Laura.

Film badges will be changed tomorrow. Please place your badge in its assigned rack space before leaving work today.

New Chicago Manager Visits Lab



Roger Stoutenburgh

Cherri Langenfeld (right), recently appointed Manager of the U.S. Department of Energy's (DOE) Chicago Field Office, visited BNL on Wednesday, October 28, to meet with the staff of DOE's Brookhaven Area Office, which is managed on site by Carson Nealy (not shown).

While at Brookhaven, Langenfeld also met with Lab management and toured the site, with major stops at the Relativistic Heavy Ion Collider Project and the National Synchrotron Light Source (NSLS).

A first stop on Langenfeld's Light Source tour was the lobby, where NSLS Chairman Denis McWhan (left) and Robert Hughes, President of Associated Universities, Inc., showed her the picture-window view of the busy vacuum ultraviolet (VUV) ring experimental floor and the animated diagram (left) that describes the workings of the NSLS' two electron storage rings -- the VUV and the x-ray ring.

Spotlight Shines on 60 In FY 1992

Sixty BNL employees found themselves in the spotlight during fiscal year 1992 -- as recipients of Spotlight Awards in the second year of the Lab's Recognition Awards Program.

For extending short-term extraordinary effort in response to department or division needs, each of these employees received a \$500 after-tax award, designed to recognize BNLers in eligible administrative and technical support jobs.

Though they were honored for different contributions, each recipient came to the Spotlight Award the same way: Recognizing that an accomplishment was a significant benefit to the Lab and required exceptional performance and intense effort to complete, the employee's supervisor submitted a Spotlight Award form. Once all necessary department or division approvals were obtained, a \$500 check and a Spotlight certificate were issued to the spotlighted employee.

(See photo on page 2.)

Coming Up

The Borealis Wind Quintet will appear in concert with pianist Dag Achatz, on Monday, November 9, at 8 p.m., in Berkner Hall. Tickets can be purchased at the door for \$12 general admission, \$9 students and people over 65, and \$5 for youths under 18.

Senior Chemist Garman Harbottle will deliver the next Brookhaven Lecture on Wednesday, November 18. His talk on "The Turquoise Trail Before Columbus" will begin at 4:30 p.m. in Berkner Hall.

Talk Postponed

The Outreach workshop on "Communicating and Coping With Kids" has been rescheduled, due to an emergency in the speaker's family.

Originally scheduled for Tuesday, November 10, the talk will be given on Tuesday, December 15.

Outreach workshops are sponsored by the Employee Assistance Program of the Occupational Medicine Clinic.

Awards at Small Business Fair

Last Friday, October 30, the Division of Contracts and Procurement (DCP) held a fair for small and small, disadvantaged businesses. During the day, through workshops, exhibits and tours, the over 125 attendees learned how to do business with the federal government and its prime contractors on Long Island, including BNL.

In fiscal year 1992, BNL procured a total of \$129 million in goods and services. Out of that, the Lab purchased \$68.5 million from small businesses, with \$6 million of that amount going to minority-owned businesses.

DCP also used the occasion to present three businesses with calendar year 1991 awards and recognize three BNL buyers for their outstanding service during the year.

Pictured above are (from left): Jeffrey Taylor, Office of Equal Opportunity; John Creamer and Gopal Sharma, Lafayette Grinding Corporation, small, disadvantaged business service award; Irving Lin, Abest International Inc., supplier of the year; Dennis Hall, DCP, organizer of the business fair as the Lab's small/disadvantaged business coordinator; BNL outstanding buyers Roseann Callister, Betty Organek and Fred Rodriguez; and DCP Manager Mary-Faith Healey. The third business award, also for supplier of the year, went to Urban Office Products, Inc.



Roger Stoutenburgh

Equipment Demo

LPS Laboratories, Inc., a manufacturer of environmentally safer cleaners, degreasers, lubricants, penetrants, rust and corrosion inhibitors, and cutting fluids, will demonstrate "Precision Cleaning Without Ozone-Depleting Compounds," on Thursday, November 12, from 9 a.m. to 3:30 p.m., in Berkner Hall. LPS representatives will be assisted by personnel from their authorized distributor, SAG Supply Corporation.

PSI Meeting

Janet Jones, a New York Telephone Consumer Outreach and Education Representative, will discuss "Understanding Your Phone Bill," at the next meeting of the Upton Chapter of Professional Secretaries International (PSI), on Thursday, November 12, at 6:15 p.m., in the south dining room of the Brookhaven Center.

Following a brief PSI business meeting at 6 p.m., Jones will talk about controlling telephone costs, and such special services as caller ID and call return. All are invited, and participants may wish to bring a recent phone bill.

Wine & Dine At Stony Brook

Most of Long Island's wineries, as well as such distinguished food establishments as Le Soir, Mirabelle and Starr Boggs', will serve their finest selections at the State University of New York (SUNY) at Stony Brook's Third Annual Autumn Evening's Wine and Food Tasting, on Thursday, November 19.

Hosted by the Campus/Community Committee for Undergraduate Scholarships, to benefit high-achieving Stony Brook students, the event will run from 5:30 to 8:30 p.m. in the atrium of the indoor sports complex. This year, it will also feature a wine auction offering 70 bottles of exceptional vintages.

Admission is \$30 prepaid and \$35 at the door. For tickets before November 12, send a check, payable to Stony Brook Foundation/Scholarship Fund, to Paula Pelletier, Office of Institutional Studies, 428 Administration Building, SUNY at Stony Brook, Stony Brook, NY 11794-0201. Attendees must be at least 21 years old.

For more information, call Michael McHale, 632-6873.

Veterans Day 1992 Final Curtain for WWII Theater

Termites and dry rot got the better of Bldg. 178, an accelerator warehouse on Brookhaven Avenue. So, with its contents consolidated and the remainder moved back to the

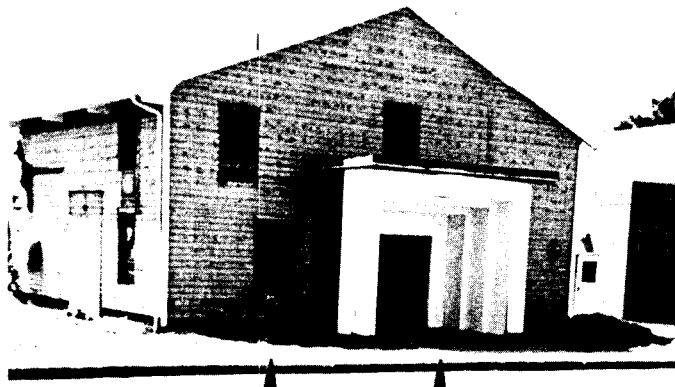
Spotlight Shines on 60 BNL Employees in FY 1992



Two-thirds of those honored with 1992 Spotlight Awards were on hand for this photo: (front, from left) Michael Wiplich, Physics Department; Carol Joyce, Director's Office (DO); Bridget Ramos, Department of Nuclear Energy (DNE); Sylvia Mouzakes, Staff Services Division; Bette Morgan, Computing & Communications Division (CCD); Diana Votruba, Relativistic Heavy Ion Collider (RHIC) Project; Millie Laster, Alternating Gradient Synchrotron (AGS) Department; Sheryl Golden, Reactor Division; Randi Vogt, Reactor; Barbara Cox, Safety & Environmental Protection (SEP) Division; Donna Larsen, Biology Department; Veronica Brooks, Medical Department; Rosemarie Busch, DO; Steve Kemp, National Synchrotron Light Source (NSLS) Department; (center, from left) Anthony Lenhard, NSLS; Wayne Broome, NSLS; Fred Wahlert, Central Shops Division; Frank Kito, Biology; Carl Eld, AGS; Ed Gill, AGS; Paul Ribaud, RHIC; John Bunicci, AGS; Brian Briscoe, AGS; Joe Bauernfeind, AGS; Bill McKeon, RHIC; Dieter

Zantopp, RHIC; (back, from left) Charlie Murray, RHIC; Ed Taylor, CCD; Steve Gill, AGS; Marjorie Chaloupka, DNE; Bob Barone, CCD; Keith Power, RHIC; Joseph Klemish, SEP; Frank Zafonte, SEP; Warren Voegelin, SEP; Chris Degen, RHIC; Gary Gross, Safeguards & Security Division; James Wright, Plant Engineering Division; Joe DeLong, AGS; and Richard Skelton, AGS.

Spotlight Award winners not pictured are: Frank Cullen, RHIC; Franklin Densing, Instrumentation Division; James Desmond, NSLS; Francine Donnelly, Department of Applied Science (DAS); Paul Geiger, Budget Office; Bonnie Hulse, Chemistry Department; Michael Lenz, Physics; Patrick Moylan, Reactor; Philip Pagano, Reactor; Ronald Picinich, RHIC; Peter Pohlig, SEP; Stanley Sakry, Reactor; John Schill, Instrumentation; Judith Thompson, NSLS; Fred Usack, AGS; Arlene Waltz, DAS; Sharon Wang, Management Information Systems (MIS) Division; Susan Wells, MIS; Thomas Wozniak, NSLS; Michael Zguris, AGS.



Removing the shingles added after the war reveals Bldg. 178 as a shadow of its former self.



As the bulldozer dispenses with the remains of Bldg. 178, Parke Rohrer (left), BNL Associate Director for Management & Physical Plant, discusses the work's progress with Project Engineer Raj Yadav, Plant Engineering (PE) Division, who coordinated the demolition, working with Project Engineer Richard Scheidet (not pictured), PE.

Photos at right and at top of page by Roger Stoutenburgh.

Alternating Gradient Synchrotron (AGS), this "temporary" wood building dating from World War II was taken down one weekend at the end of August (above right). In its place,

grass was planted on the lot between Bldg. 460, the Director's Office, and Bldg. 459, Management Information Systems Division.

But, before the bulldozer began its work, the building's shingles had been removed, revealing the original, 1941 wood siding. In comparing a picture of the building taken during World War II (left) with one taken of Bldg. 178 before its demise (above left), hints can still be seen of its more glamorous heyday as a small Camp Upton lecture hall and movie theater during the second World War.

Neither the oldest, the largest nor the most famous, Bldg. 178 was one of at least four indoor theaters built at Camp Upton during one or the other World War. Of them, the last remaining is Bldg. 424 on the corner of Brookhaven Avenue and Columbia Street, which is built of more durable cinder blocks and still used by the AGS Department for storage.

The most famous was Camp Upton's Liberty Theater. Built during World War I, formerly located north

of Bldg. 701 and auctioned off along with the rest of Camp Upton's buildings at the end of the war, the Liberty Theater was the site of the 1918 rehearsals and previews of *Yip, Yip, Yaphank* — then Sergeant Irving Berlin's musical revue of military life that was later the hit of New York.

The last picture of Bldg. 178 (above left) was taken by Crane & Elevator Safety Inspector George Wunderlich of the Plant Engineering Division, who is an amateur photographer and Vietnam War veteran.

Between his tours of duty in Vietnam, 1963-66 and 1969, Wunderlich, among other his duties as a Marine, staffed the photo assignment desk in the Marine's photography lab at the 3rd Marine Division Headquarters at Camp Courtney, Okinawa. Hence, he became interested in photography.

After leaving the Marines in 1970 as a sergeant, Wunderlich served in the Army Reserves, 1971-76, and the Navy Reserves, 1977-88, retiring as a chief.

— Marsha Belford



Bldg. 178 a War Department Theater at Camp Upton, World War II.

Cooking Exchange

The Cooking Exchange will hold its monthly meeting on Tuesday, November 10, at 11:30 a.m., in the Recreation Building. All are welcome to come and sample a variety of tasty dishes and meet with new friends. A donation of \$2 per adult is requested, and baby-sitting will be provided for \$1 per child. For more information, call Laura Gottlieb, Ext. 1022.

Social Club

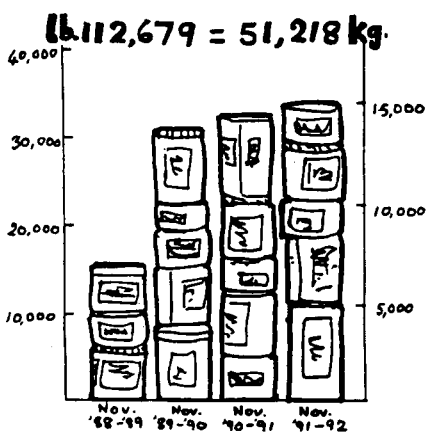
The following events are on the Social Club's calendar:

- **TV's Double Dare Tour** — Nassau Coliseum, Fri., 11/27, 7 p.m., \$11 each, due now.
- **Thanksgiving Whodunit?** — Lake George, 3 days, 2 nights, 11/27-29; price includes round-trip transportation to Holiday Inn Turf, 6 hours open bar, 3 deluxe meals, karaoke party, "Million \$ Half Mile" factory outlet tour, crazy hat and sunglass party; 5/rm. \$185 ea., 4/rm. \$190 ea., 3/rm. \$195 ea., \$2/rm. \$200 ea.; money due now.
- **12-Day Alaska Northbound** — Leave 6/4/93; 2/rm \$2,944 ea., 3/rm. \$2,754 ea., single \$3,989; \$250 deposit per person due by 11/30.

For more information or reservations, call Doris Terry, Ext. 7610.

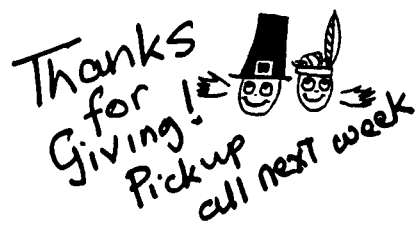
BNL Food Drive

November 1988 — 1992



In four years of generous giving to the needy of Brookhaven Town, BNLers have more than doubled their original donations. After a first-year's total of 7,081 kilograms (15,579 pounds) in 1988-89, contributions jumped to 14,205 kg (31,250 lb.) in 1989-90, then to 14,927 kg (32,840 lb.) in 1990-91. This past year was the finest of all, with donations soaring to 15,005 kg (33,010 lb.) in 1991-92.

Not only food, but personal checks will be especially welcome this month for Thanksgiving baskets. Checks and receipts from King Kullen and Finast, which give discounts, may be sent to Carole Kerr at Bldg. 460.



Note to Employees:

Attendance at lectures, meetings and other special programs held during normal working hours is subject to supervisory concurrence.

BROOKHAVEN BULLETIN

Published weekly by the Public Affairs Office for the employees of BROOKHAVEN NATIONAL LABORATORY

ANITA COHEN, Editor
MARSHA BELFORD, Assistant Editor
LIZ SEUBERT, Reporter

35 Brookhaven Ave., Upton, N.Y. 11973
(516) 282-2345

A la Carte Bus Trip To New York City

Art people, theater people, shopping people — join the BERA Art Society-sponsored bus for an *a la carte* trip to New York City, Saturday, December 12.

Leaving BNL at 8:15 a.m., the group will spend an hour at the renovated Battery Park, to see its splendid new marina and glassed-in Winter Garden, which encloses very tall palm trees, cafes and shops. Then, it's uptown, to drop the theater people at a central point, and lunch at one of the fascinating delis, sandwich places or small restaurants around 57th Street (list and map provided).

Next stop will be the Metropolitan Museum, where several new shows are on view — Raphael, Goya, Rubens, and other masterpieces loaned from France; portraits and self-portraits by Thomas Eakins, Mary Cassatt, Winslow Homer, and other American artists; the "Rembrandt" of Chinese painting, 17th century artist Tung Ch'i-ch'ang. Or, those with children may prefer to visit the small, superb Central Park Zoo.

At 5 p.m., it's on to Rockefeller Center to see the Christmas tree and lights. After picking up the theatergoers near Broadway at 6:30, the bus will return to BNL by 8 p.m.

For bus tickets at \$16 each, call Liz Seubert, Ext. 2346 or 286-8563.

At the BERA Store

New arrivals at the BERA Sales Office are 1993 discount books offering savings of up to 50 percent on everyday items, as well as informal and fine dining, car rentals and hotels. Buy them at the Sales Office for \$30 each, about \$8 less than at local bookstores.

Located in Berkner Hall and open workdays, 9 a.m. to 1:30 p.m., the Sales Office also carries:

- **Tickets** — discount United Artist Theater tickets for \$5 each, twofers for some Broadway shows, wholesale club information, flyers, other discount offers.
- **Merchandise** — photo-processing service by Employee Photo Service, film, designer greeting cards, Long Island and BNL postcards, T-shirts at \$7 each, sweat-shirts at \$13 each, mylar balloons at \$1.50 each, BNL buttons, mugs and hats.
- **Attractions** — free Magic Kingdom membership cards for Disney World, Epcot Center, Disneyland, MGM Studio and 10 percent discount at Disney stores; discount cards for Sea World, Busch Gardens, Universal Studios; tickets for Hershey Park, Sesame Place, Action Park and Great Adventure, in season.
- **BERA Participation Awards** — The Sales Office is the official redemption center.

For more information, call Carolann Zebrowski, Ext. 3347.

Volleyball

Standings as of 10/28

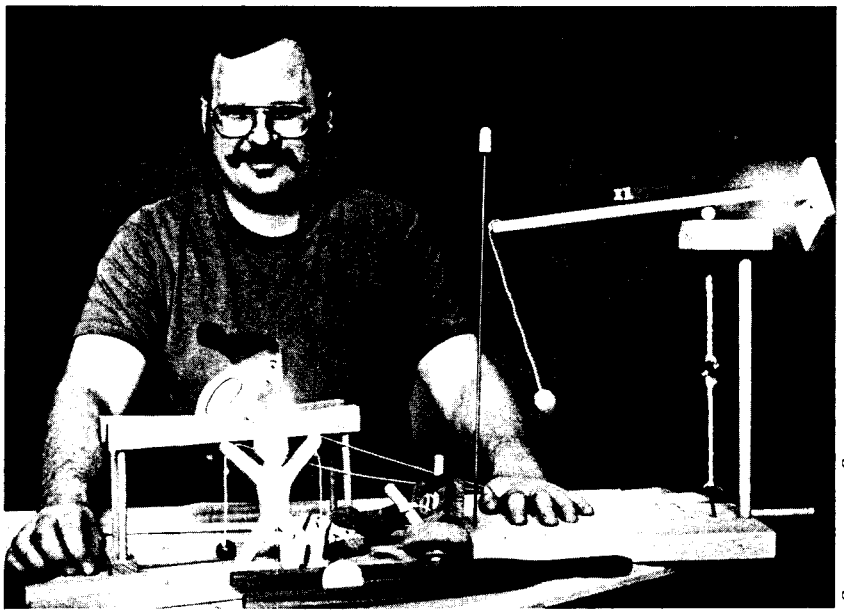
Open League		League I	
The Roofing Co.	6-0	Network News	6-0
GTeam	6-3	Underdogs	6-0
Penetrating Veggies	3-3	VolleyBallAholics	5-1
Me & the Boys	3-6	Upfagrats	5-1
Farside	0-6	Rude Dogs	2-4
		D & D Company	0-9
		Fornossing	0-9
League II		League III	
Monday Nite Live	6-0	High Volley'em	4-2
Nuts & Bolts	5-1	Upton Ups	4-2
Just Up	4-2	Nutcrackers	4-2
Night Court	3-3	Volley of the Dolls	3-3
Safe Sets	3-3	Jolly Veggies	3-3
Fossils	2-4	Silver Bullets	3-3
Net Wits	1-5	Hairballs	2-4
Sourcerers	0-6	Mis-Fits	1-5

Touch Football

Final Standings

Regular Season	Playoffs
Untouchables 7-1	The Bad Boys, 20
The Bad Boys 7-1	The Other Guys, 0
The Other Guys 2-5	Untouchables, bye
Medical 2-6	
Scram 1-6	
Championship: The Bad Boys 14, Untouchables 709	

What's a Pendoodle?



Roger Stoutenburgh

No time to enter the 6th BERA Craft Show? There's plenty of time — if you hurry a little. One of the BNLers who is working busily to finish an exhibit is Mark Walker, pictured here with his pendoodle, which will be displayed at Berkner Hall from December 1 to 4. The versatile Walker, who made appealing children's toys for the last Craft Show, is also entering some macramé work.

All sorts of crafts are welcome. More than one piece may be entered by an exhibitor, to be shown as space permits. To enter, complete and return two forms for each work by Monday, November 16, to Robert Chrien, Bldg. 510. More forms are at the BERA Store at Berkner Hall — or make a copy.

Entry for 6th BERA Craft Show, December 1-4

Name _____ Phone _____

Craft _____

Space needed _____

Vertical or horizontal; table or floor _____

BNL contact & phone _____

Return to Robert Chrien, Bldg. 510, by November 16.

Gym & Pool Closing

The pool and gymnasium will be closed for the Veterans Day holiday on Wednesday, November 11, as well as the Thanksgiving holiday, Thursday through Sunday, November 26-29. Regular hours will resume on Monday, November 30.

Arrivals & Departures

Arrivals

Brian G. Boucher.....AGS
Jean-Michel Escoubas.....App. Science
Robert H. Olsen.....RHIC
Elizabeth A. Rowan.....RHIC

Departures

This list includes all employees who have terminated from the Lab, including retirees:

Peter P. DeLeo.....NSLS
Dipti Patel-Misra.....Chemistry
Harvey M. Rarback.....Medical
Jacob Rodnizki.....Nuc. Energy
Elbio R. Rotela.....NSLS
Rita F. Straub.....Medical

Bowling

Red/Green League

R. Sick bowled a 244, A. Warkentien 235, R. Mulderig 221/216/633 scratch series, R. Wiseman 215/201/614 scratch, H. Arnesen 212, R. Eggert 210, R. Jansson 210, E. Meier 208, K. Riker 203, R. Larsen 201.

Purple League

Jim Goode bowled a 222/190/561 scratch series, John Niemczyk 221, Bob Geib 214/206/564 scratch, John Addressi 196, Vito Manzella 195/189, Lorraine Roecklein 194/180, Tracy Ryan 188, Marilyn Picinich 184, Debbie Keating 179/177, Pat Manzella 179, Nancy Erickson 174, Fern Simes 172, Ruth Sheehan 171; Joe Biamonte converted the 4/7/10 split.

White League

Mike Meier bowled a 259/604 scratch series, Jim Petro 250/196/604 scratch series, Ben Belligan 212/545 scratch series, Ed Meier 203, Phil Radueswicz 193/549 scratch series, Tom Romano 191, Ray Raynis 190, Mary Grace Meier 185, Brigita Gordon 180/176, Fran Brown 178.

Let's Dance

Due to the Veterans Day holiday, there will be no class for the BNL Dance Club on Wednesday, November 11. Therefore, the eighth and final class of the swing and cha-cha series will be held 5:15-6:30 p.m. on Wednesday, November 18, in the North Ballroom of the Brookhaven Center.

Before and after that class, present and previous Dance Club members may preregister for the foxtrot and mambo series of eight lessons, which will begin on Wednesday, December 2. At \$15 per person, the class will be limited to the first 70 people, with preference given to present and previous Dance Club members.

For more information, call Marsha Belford, club president, Ext. 5053.

Cafeteria Menu

Luncheons

Monday, November 9	
Soup: Beef barley	.80/1.10
Entree: Fettucini Alfredo	3.20
Lite choice: Chicken curry	3.35
Carvery: Hot pastrami sandwich	2.95
Grill: Tuna steak	3.95
Tuesday, November 10	
Soup: Split pea	.80/1.10
Entree: Sausage & pepper hero	3.35
Lite choice: Vegetarian plate	2.55
Carvery: Hot roast beef sandwich	2.95
Grill: Halibut steak	3.95
Special: Bacon burger bonus	
Wednesday, November 11 - Veterans Day	
Snack bar service - 9 a.m. to 2 p.m.	
Thursday, November 12	
Soup: Chicken & rice	.80/1.10
Entree: Fettucini w/white clam sauce	3.45
Lite choice: Baked herb chicken	3.45
Carvery: Hot corned beef sandwich	2.95
Grill: Monte Cristo platter	2.95
Special: Try pumpkin pie, get ½ off drink	
Friday, November 13	
Soup: Seafood gumbo	.80/1.10
Entree: Baked ziti marinara	3.20
Lite choice: Cajun catfish	3.45
Carvery: Hot roast turkey sandwich	2.95
Grill: N.Y. shell steak	4.25
Monday Night Football	
9 p.m. Brookhaven Center	

Classified Advertisements

Placement Notices

The Laboratory's placement policy is to select the best-qualified candidate for an available position. Consideration is given to candidates in the following order: (1) present employees within the department/division and/or appropriate bargaining unit, with preference for those within the immediate work group; (2) present employees within the Laboratory; and (3) outside applicants. In keeping with the Affirmative Action plan, selections are made without regard to age, race, color, religion, national origin, sex, handicap or veteran status.

Each week, the Personnel Division lists new placement notices. The purpose of these listings is, first, to give employees an opportunity to request consideration for themselves through Personnel, and, second, for general recruiting under open recruitment. Because of the priority policy stated above, each listing does not necessarily represent an opportunity for all people.

Except when operational needs require otherwise, positions will be open for one week after publication.

For more information, contact the Employment Manager, Ext. 2882, or call the JOBLINE, Ext. 7744 (282-7744), for a complete listing of all openings.

SCIENTIFIC RECRUITMENT - Candidates may apply directly to the department representative named.

POSTDOCTORAL RESEARCH ASSOCIATE - trained in physical chemistry, with experience in gas-phase kinetics, branching-ratio studies using flow-tube and flash photolysis techniques, and computer simulations of complex reaction mechanisms. Contact: R. Bruce Klemm, Department of Applied Science

LABORATORY RECRUITMENT - Opportunities for Laboratory employees.

MK 108. STEAMFITTER, GROUP LEADER - Plant Engineering Division.

DD1076. TECHNICAL POSITION - Requires AAS or equivalent experience and ability to work from electrical and/or mechanical blueprints or sketches in building and troubleshooting complex equipment. Experience in leak detection (components and systems) PPA, the handling of cryogenics, and the use of machine and hand tools also required, as are excellent communication skills and demonstrated organizational skills. (reposting) RHIC Project.

OPEN RECRUITMENT - Opportunities for Laboratory employees and outside candidates.

MK 0864. CHEMISTRY ASSOCIATE POSITION - Requires a BS in a relevant field, excellent oral and written communication skills, and experience analyzing and verifying macromolecular structure data as received by the Protein Data Bank, Chemistry Department.

DD 6142. TECHNICAL POSITION - (term appointment) Requires an AAS in mechanical technology or equivalent experience, and previous experience in the fabrication and assembly of superconducting coils, cryostats and vacuum chambers. The ability to work from formal prints, verbal instructions and rough sketches also required, as is familiarity with machine shop practices and the use of precision measuring devices. Alternating Gradient Synchrotron Department.

NS 1080. ENGINEERING POSITION - Requires BS/MSEE and approximately five years' experience in the design of PC-based data acquisition and control systems. Proficiency in both hardware and software aspects of designs and IEEE-488-based instrumentation necessary. Experience with high-current precision dc power supplies, high-current semiconductor applications and analog circuit applications a plus. Will be responsible for the design, procurement, installation and test of systems used in the construction and testing of superconducting magnets. RHIC Project.

NS 1081. ENGINEERING POSITION - Requires BSME, approximately five years' QA experience in an industrial/manufacturing environment, and excellent written and oral communication skills. Work involves interfacing with project engineers to write magnet manufacturing documentation, QA design and documentation review, subcontractor audits and nonconformance investigations. RHIC Project.

NS 1079. ENGINEERING POSITION - Requires MS/PhD in engineering or physics or equivalent, and significant experience in the design and operation of accelerator-related systems. Experience in the specification and design of analog and rf circuitry necessary. Responsibilities include the design and construction of beam instrumentation systems, which may include transverse feedback systems, wide-band current monitors, Schottky detectors and transverse profile monitors. RHIC Project.

NS 1082. TECHNICAL POSITION - Requires an AAS degree or equivalent technical knowledge and a minimum of ten years' experience building and testing superconducting magnets. Experience in scheduling and supervising work activities in a construction/operations environment, and proven problem-solving capabilities necessary; knowledge of computer scheduling algorithms a plus. RHIC Project.

LS 5096. ENGINEERING POSITION - Requires a BS degree in engineering and several years of pertinent experience. Will work in the mechanical group of the NSLS on problems related to electron storage rings, beam lines and associated insertion devices. Responsible for operation, maintenance and upgrade of electron storage ring utility systems. National Synchrotron Light Source Department.

LS 5597. PROGRAMMING POSITION - (part-time, term appointment) Requires a BS in computer science or equivalent. Experience with UNIX, C language programming and shell scripts required; Sun experience preferred. Familiarity with TCP/IP networks, FTP, and other file-transfer formats such as NetNFS and HDF is an asset. Knowledge of FORTRAN is desirable. Strong background in mathematics and physical science

would be an asset. Responsibilities include acting as a system administrator for Sun workstations. Department of Applied Science.

LS 8707. ENGINEERING POSITION - Requires a BS degree in a relevant discipline and demonstrated experience in administering cost/schedule control for major programs. Experience in CERCLA/RCRA environmental programs highly desirable. Thorough knowledge of project management and spreadsheet software required. Will develop program funding requests and coordinate interfaces with other Laboratory groups. Office of Environmental Restoration.

LS 10455. EXPERIMENTAL MACHINIST - Performs layout, preparation, measurement, setup, assembly and installation. Works on various materials from prints, sketches or verbal instructions. Demonstrated ability in all phases of machine shop work is essential. Central Shops Division.

LS 0456. CNC OPERATOR - (temporary appointment) Requires a minimum of 3 years' prototype machining experience on NC milling and lathe equipment. Will be required to complete setups under the guidance of a group leader and input data manually on menu-driven type controls. Should also have the capability to select and install tooling as required, and show proficiency in job print interpretation. Central Shops Division.

Motor Vehicles & Supplies

92 HARLEY DAVIDSON 883 DELUXE - blue, very few miles, \$6,500. Kerry, 878-4757.

91 PONTIAC GRAND AM - Le Quad 4, fully loaded sports pkg., book valued @ \$10,400, asking \$10,000. Mike, Ext. 5904.

90 LINCOLN TOWN CAR - Signature Series, gold, moonroof, leather, 34k mi., excel. cond., \$16,400 firm. John, Ext. 4660 or 727-1140 eves.

90 DODGE CARAVAN - c/v, 5-pass., maroon, tan int., am/fm stereo, cruise, rear defog/wiper, p/s, p/b, p/l, tilt, alarm, 4-cyl., 30k mi., 475-9027.

88 GMC JIMMY S-15 - 4.3, excel. cond., \$7,900. Kerry, 878-4757.

88 HONDA PRELUDE - 5-sp., ac, am/fm cass., moonroof, gar., red, 31k mi., excel. cond., \$8,500. 286-0259.

88 HYUNDAI EXCEL GL - 45k mi., stereo, alarm, sunroof, mint, \$2,650; '85 Toyota Camry, 100k mi., stereo, ac, \$3,600. Reyad, Ext. 3913 or 345-3957.

87 CADILLAC BROUGHAM - 4-dr., 33k mi., \$7,000. 286-0466.

87 HYUNDAI - 2-dr. h/b, m/t, cass., good cond., \$1,500. Marlene, 744-5801.

87 CHEVY SPRINT - blue, 4-dr., 3-cyl., 40k mi., needs body work, \$600. Nicole, 744-4816.

86 PLYMOUTH VOYAGER - 80k mi., clean, v.g. cond., \$4,800. Ext. 2420.

86 TOYOTA CAMRY LE - 5-dr., a/t, ac, 55k mi., looks great, runs well, \$6,000. Kirk, Ext. 3780.

86 HONDA CIVIC SEDAN - 5-sp., ac, alarm, excel. cond., \$2,700 neg. Ext. 3341 or 399-6507.

86 PONTIAC FIREBIRD - p/w, ac, T-top, V-8, rebuilt eng., new trans., \$2,000 neg. Pete, 331-0227, leave message.

Furnishings & Appliances

BED-IN-BAG - blue print, queen, brand-new, \$79. 689-9234.

CARPET - 11 1/2'x11 1/2', dusty rose, bound, w/ padding, excel. cond., \$50. Lloyd, Ext. 5225.

CHAIRS - 4, dinette, tan vinyl, on wheels, \$20/ea. Albert, 727-4884.

CLOTHES DRYER - elec., s/s drum, excel. cond., \$75; sofa & chair, gold & green, \$100/both. Paul, 727-4859.

DINING ROOM - solid oak, Richardson, 40" round table, opens to 64", matching hutch, no chairs, asking \$575. Sharon, 924-5505.

DINING SET - Col., hardwood, hutch, 6 chairs, table w/2 leaves & pads, \$600; Kenmore freezer, 15.9 cu. ft., \$150. 821-0354 after 6 p.m.

ELECTRIC KNIFE - \$8; electric frying pan, \$8; slow cooker, 3 1/2 quart, \$6. 369-9879.

KEEPSAKE HUTCH - kit, 5 1/2"x10", \$3; metal box, w/key, 4"D x 11"L x 7 1/2"W, \$8. Susan, Ext. 7647.

SINK/STOVE/REFRIGERATOR - combo, perfect for small apt., \$450. Marie, 539-3020.

STOVE - coal & wood, 60k Btu, \$250 neg. Bob, Ext. 7238.

TABLE LAMPS - 2, white glass, floral design, 3-way switches, \$25/both. Joe, Ext. 2898.

Tools, House & Garden

ALUMINUM AWNINGS - 7 1/2'x3 1/2' & 17 1/2'x7', 1 each, asking \$150/both. Ext. 7573 or page 4143.

FIREWOOD - seas. hardwood, split, delivered, half cords avail., \$115/cord. Glenn, 924-2035.

FIREWOOD - seasoned oak. J. Scesny, 732-2849.

GENERATOR - Generac, 4kW, from hurricane Gloria, good cond., manuals, plug, extra muffler, stored indoors, \$350. Ext. 2296.

WATER PURIFYING SYSTEM - Culligan, 2 tanks MK-89 conditioner, 1 tank acid neutralizer, auto, w/all controls, make offer. 929-4173.

Sports, Hobbies & Pets

BIKE - man's racing bike, Panasonic, book rack, \$25. 744-7852 after 5 p.m.

BIKES - 10-sp. & 3-sp., \$30/ea. or \$50/both. Miguel, Ext. 5427.

BIRD CAGE - brass, 15" diameter, 27"H, brand-new, ask. \$75. Lois, Ext. 4904 or 929-4753.

CABINET - dark walnut finish, \$40. 475-7257.

EXERCISE BIKE - Geo Track, dual handle, action pump, mint cond., \$50. Scott, 696-7221.

GOLF PULL CART - 6 mo. old, \$30. So, Ext. 7546.

SKI BOOTS - man's, size 9, Kastinger Morsan, metal skis 100, \$25/both; 26" woman's bike, 3-sp., \$25; Sears 7" circular saw, \$40. 363-6049.

SKIS - Buzzard, 170, Tyrolia 230 bindings, man's size 10 boot, \$75/all. Jim, Ext. 4026 or 821-9814.

The Brookhaven Bulletin is printed on paper containing at least 50 percent recycled materials, with 10 percent post-consumer waste.



WEIGHT BENCH - Body Smith Olympic, w/ attach., \$450; Soloflex station, \$400; Royce CB radio, base station, best offer. Dave, Ext. 5211.

Audio, Video & Computer

ANSWERING MACHINE - Southwestern Bell, date/time stamp, memo, toll saver, remote code, orig. \$75, sell for \$45. 737-6517.

CALCULATOR - Hewlett Packard 28, scientific calculator, like new, w/manuals, \$100 or best offer. Michael, Ext. 3469.

COMPUTER - XT-Turbo, compat., monochrome graphics, 2 5 1/4" drives, 40MB hard drive, Prodigy modem, \$400 or best offer. Miguel, Ext. 5427.

CORDLESS TELEPHONE - AT&T 4200, new, orig. \$75, sell for \$45. Ext. 2271 or 737-6517.

LENS - enlarging 2.8, 50mm, \$75; diskettes, 360k, new, 25/pack, \$6. Susan, Ext. 7647.

LP RECORDS - Franklin Mint Collection, great romantic concerts, orchestral, classic violin, new. Janet, Ext. 2345 or 929-3910.

TV - color, 19". Ext. 2420.

VIDEO RECORDER - mini-cam, Sony CCD-TR4, extra tapes & battery pack, \$500. 331-3969.

VIDEO CASSETTE - Home Alone game, for Game Boy, brand-new, still in package, \$30. 744-7852.

Miscellaneous

AIRLINE TICKETS - 4, American Airline, L.A. to Islip, one way, \$100/ea., \$25/ea. to change date. 341-1039.

AIRLINE TICKETS - 2, American Airlines, round trip, Orlando, FL, Mon., 11/9 - Mon., 11/16, \$400. Chris, 878-0858.

ATTACHE CASE - brown leather, combination locks, never used, \$65. 447-0983 after 5 p.m.

BABY'S ITEMS - 2 car seats, \$30/ea.; stroller, \$60; bike seat, \$30; swing, walker, much more. Ext. 2752 or 751-6571.

BUS TRIP - West Point, Sat., 11/21, Army vs. Boston College, bus, food, refresh. incl., \$50/ea. Ron, Ext. 4144, or Bob, Ext. 3299.

CONCERT TICKETS - 4, John Valby, Fri., 11/13, Centereach, \$15/ea. Mike, Ext. 5904.

ENGAGEMENT RING - approx. 1.25 carat, round diamond, \$2,800. Ext. 2716.

SPRINGSTEEN TICKETS - Mon., 11/9, Nassau Coliseum, 7:30 p.m., \$32.50/ea. Pam, Ext. 4082 or 732-6280.

TYPEWRITER - portable, good cond., \$25. Roger, Ext. 7518 or 878-8847.

Free

DOBERMAN - female, excel. temp., good w/children, all shots, spayed, 7 yrs. old. Carl, Ext. 5283.

PUPPIES - boxer mix, very cute, need loving home, brown/black. 399-7655.

RABBITS - five, 5-8 yrs. old, take 3 get cage. Susie, 924-6058, anytime.

DOG - Rottweiler mix, 80 lbs., male, shots, 11 mo., friendly & loving, needs good care & attention. Marilyn, Ext. 3802.

Yard & Garage Sales

PORT JEFFERSON STATION - 11/7, 10 a.m.-4 p.m., free books, records, open house, beds, dining room, misc., 27 George St. off 25A.

YAPHANK - Sat., 11/6, 10 a.m.-4 p.m., 472 Main St., cancel for rain.

Car Pools

BOHEMIA-E.ISLIP-OAKDALE-SAYVILLE - need 1 more driver. Frank, Ext. 2314.

PLAINVIEW - Exit 43 off LIE, 4th driver needed. Elliott, Ext. 2495.

Lost & Found

FOUND - gray/wh. cat, young male, friendly, declawed, altered, claim or adopt. Joe, Ext. 5131.

Wanted

ACOUSTIC GUITAR - good cond. Scott, 696-7221.

BOY SCOUT EQUIPMENT - good cond., reas., uniform size 14-16. Ext. 2419.

HESS/TEXACO TOY TRUCKS - by private collector, top \$ for mint in-the-box trucks. Jim, Ext. 4026 or 821-9814.

HOUSE - to buy, good school district, 3 bdrm., reas. Edward, Ext. 7502.

IBM PC - or clone. Al, 744-0354.

PEOPLE INTERESTED IN JO DO - "martial art of the stick," demo 11/18, 5:30 p.m., Rec. Hall in apt. area, starting new club. Rolf, Ext. 4810.

POOL TABLE - 8' slate, reas. cond. & price. George, 878-1178.

RECORDS - LPs and/or 45s, any polka, rock & roll, 1955-65; tape recorder, reel-to-reel, Akai, models M8, 1702 or Roberts. Frank, 727-5096.

RIDER - to share driving expenses, round-trip from BNL to Pittsburgh on weekends & holidays. Bill, Ext. 3698 or Ext. 2569 eves.

SLIDE PROJECTOR - cube or carousel type. Mike Ext. 5030 or 821-4083.

TRAINS - Lionel & American Flyer & accessories, top \$ paid. Bruce, 924-4097 after 5.

WATERCOLORS - brushes, paints, etc., from someone no longer interested. John, Ext. 7671.

WOMAN - live-in to care for 80-yr.-old grandmother, cook, clean, general care, Stony Brook area, near stores. Joann, 472-6742.

WOODSTOVE - free-standing, airtight, reas. Carl, Ext. 3354 or 929-5781.

Services

Services are listed in the first Bulletin of every month as a courtesy to BNL employees. They are neither screened nor recommended by the Bulletin. Services forms are available in the Bulletin lobby, Bldg. 134.

ALARMS - installed from start to finish, hooked into central, all types of systems, great prices, free estimates. James, 395-6055.

ALTERATIONS - men's & women's clothing, call for estimate. Theresa, 289-0893.

AUTOMATIC LAWN SPRINKLERS - free est., prof. layouts, repairs, alterations, courteous service, winterizations, \$25. Lou, 928-7042.

BABY-SITTING - exp. mom searching for one special child to baby-sit, toys, games, snacks & more. Karen, 342-1007.

BAND - "The Finishing Touch," music for all occasions. Bob Dee, 333-0789.

BRICKWORK - masonry, patios, walks, swimming pools, retaining walls, landscaping ties, Belgium block, 25 yrs. exp., Lab disc. Tony, 698-0274.

CATERING - homemade pastas & all types of good homemade cooking, cater any occasion, beat any price. Luisa, 395-6055.

CARPENTER - dormers, extensions, window installation, fin. bsmt., siding, decking & more, free est. Dennis, 395-6055.

CARPENTRY - all phases home improvement, decks, dormers, extensions, custom closets, no job too big/small. Mike, 744-0388.

CARPET/UPHOLSTERY CLEANING - spot, pet stains, odor removal, auto interior, fabric protector, free est., Lab disc. Jerry, 924-6019, days.

CHILD CARE - 12 yrs. exp., 4 miles from Lab, other Lab refs. 821-1558.

CHILD CARE - mother of 3 will care for children in our home, near Lab, reas. rates, Ann, 399-1721.

CHILD CARE - in my home on Lab site. Elizabeth, 341-1019.

CHILD CARE - or baby-sitter for children of any age, on site, loving & responsible adult. M. Liu, 341-1040.

CHIMNEY CAPS - fireplaces, wood, coal & oil flues, custom-made for pre-fabs, stainless steel lifetime guarantee. Mike, 821-5526.

CHRISTMAS COOKIES - order by pound; custom decorated cakes, pies, mini pastries, order early, on-site delivery. Milie Laster, 822-2863.

CLEANUPS - furniture moved, no job too small, van avail. for hire w/driver. Frank D. 399-4480.

COLLEGE FINANCIAL AID - fee refunded if no aid, computers match grants/schol. w/student's background, Lab disc. Tom, 736-6691.

COMPUTER SERVICES - complete, from consulting to set-up; CAD/design, laser-printed drawings & charts, reas. rates. 563-6680.

DECKS - custom, cedar CCA, 20 yrs. exp. Danny, 698-9274.

DJ/MC - "Locomotion" party & dance music from 40s-90s, quality sound/service, free lights, now booking holiday parties, BNL refs. Lou, 698-8210.

ELECTRICIAN - service upgrades, high-hats, no job too big or small, lic. & insured. Gregg, 874-8631 after 5 p.m.

ELDERLY CARE - female, dependable, warm, caring, a great break for the family, avail. eves & weekends. Nicole, 369-5350.

ELDERLY CARE - young woman willing to give quality care to elder, avail. nights & weekends. Denise, 728-4478.

FINANCIAL - retirement planning for ages 30-55, for pension maximization, retirement benefits & benefit options analyzed. Rich, 744-4816.

HAIRDRESSING - cut, perm, color, etc., m/f, 20 yrs. exp., NY & MA licensed, north shore location or Lab apts. Nancy, 331-1372.

HEATING - air cond. refrigeration, reas., licensed, insured. Jerry, 399-6457.

HOUSE CLEANING - reasonable, very efficient, refs. Marty, 399-3496 any time.

JEWELER - repairs, special orders, fine quality work, honest, affordable, no job too large/small. Kelly, 821-5239.

JUNK - cars, trucks & machinery removed, free. Rich, 589-9103.

LAND CLEARING - careful removal of stumps, trees & brush w/rake on 450 loader, \$70/hr. Tom, 878-1060.

LOCKSMITH - sales & service, 10% Lab discount, keys cut during lunch. Pete, 399-2813 after 5 p.m.

MAILBOXES - post or house style, custom-made, heavy-gauge steel or wood, free catalog, many styles, Lab disc. Mike, 821-5526.

OLD DOLLS & TOYS - lovingly restored, cloth bodies, re-stringing, wigs, clothes, shoes, for composition, porcelain, vinyl dolls. Arlene, 473-6680.

PARTIES - make every party a special event, catering & every other detail covered, all size parties, any occasion. Rosalie, 289-5704.

PARTY TENT - 20'x30' w/side curtains, we set up and take down, \$250/38 hr. 321-2889.

PLUMBING - heating, alterations & repair work by Jim Morris, ret. BNL employee. 472-1205.

POWER WASHING - decks, homes, boats, brickwork, etc., honest, reliable, free est. John, 727-1140.

PAINTING - int., ext., taping, spackling, wallpaper, staining, polyurethane, decking, shingles, roofing, gutters, etc., insured. James, 399-4912.

PIANO/KEYBOARD LESSONS - exp. teacher, all levels. 563-6680.

SANTA CLAUS FACES - handcrafted to hang on door or wall, place order w/Penny. 467-8297.

SHEETROCKING & SPACKLING - free estimate. Kevin, 563-9855.

SKYLIGHTS - complete, prof. service, cleaning, preventive maint., installations. Joseph, 924-6019.

TOWING - junk & used cars, trucks, wanted, any cond., free removal. Roger, 924-8213.

TREE WORK - Robert, 281-2746.