

## Brookhaven Scientist Wins \$70,000 Award For Brain-Imaging Research on Antipsychotic Drugs

Stephen Dewey of the Chemistry Department has won a \$70,000 Established Investigator Award from the National Alliance for Research on Schizophrenia and Depression (NARSAD). This is the first time that such an award has gone to a researcher at a national laboratory.

Out of a field of over 165 eligible applicants this year, only nine researchers across the country received this NARSAD award. The selection process is rigorous, with all applicants required to have ongoing federally funded research grants.

As a neuroanatomist — a scientist who is trained in human anatomy, with special emphasis on the nervous system — Dewey is using the award to study how the brain responds to certain therapeutic drugs used in the treatment of schizophrenia. The award begins on May 1.

Dewey is studying the antipsychotic drugs haloperidol and clozapine. These two neuroleptic drugs are prescribed to alleviate psychotic symptoms in schizophrenic patients. In some patients, however, haloperidol can cause side effects that range from tremors to muscle rigidity, while clozapine can cause a blood disorder that can be life threatening.

Using a special medical-imaging technique called positron emission tomography, or PET, Dewey is studying how these drugs alter the ability of nerve cells to transmit their signals, via chemicals called neurotransmitters. These studies will provide insight into the biochemical mechanisms that are responsible for certain side effects.

Initial results appear to indicate that haloperidol alters the responsiveness of dopamine, a neurotransmitter involved in physical movement, to a specific pharmacologic challenge. Clozapine, however, does not alter the responsiveness of the related neurotransmitters, serotonin and acetylcholine. It is these differences that may account for the different side effects on patients.

**At Brookhaven's PET facility, Stephen Dewey (foreground) studies how the brain responds to drugs used to treat schizophrenia. Working with him are (background, from left) Don Warner and Naomi Pappas.**

Photos on this page by Roger Stoutenburgh



Together, these findings demonstrate that PET can be used to measure the multitransmitter effects of therapeutic drug intervention.

"Ultimately," says Dewey, "if we understand the biochemical mechanisms that are altered by these drugs, then this knowledge can be used by drug companies to design better ones."

Working with Dewey on his NARSAD project are: Jean Logan and Don Warner, both in Chemistry; Payton King and Naomi Pappas, Medical Department; and Jessica Brimcombe and Michael Kasten, students in the Lab's Science and Engineering Research Semester program administered by the Office of Educational Programs.

In his initial work, Dewey focused on the use of PET to examine interactions between neurotransmitter systems. This work served as the foundation for a three-year, \$800,000 grant from the National Institutes of Health. Dewey won that grant in 1992, to study the basic mechanisms

of neurotransmitter interactions.

That work builds upon his general study of neuroanatomy using BNL's world-renowned PET facility, which is supported by the U.S. Department of Energy's Division of Medical Applications and Biophysical Research, within the Office of Health and Environmental Research.

PET is used to measure the concentration of a positron-emitting radionuclide that is present in a specific area of the body, in this case, the brain. Colorful and detailed images are reconstructed, and quantitative data are obtained and used to assay brain metabolism and neurotransmitter activity.

According to Dewey, PET is the only medical imaging technique that can provide this quantitative information. And, the Lab's unique PET facility is particularly strong because of the diverse chemistry that has been developed through the years.

"With the special expertise at Brookhaven, many different radiotracers are now available to study multiple neurotransmitter systems," he says.

He adds that drug companies are very interested in the facility. In the spirit of technology transfer, there is great potential for the PET facility at BNL to collaborate with drug companies so that they can come here to test their drugs for efficacy and side effects. Dewey comments that the Brookhaven PET facility is already collaborating this way on a small scale.

Stephen Dewey earned a Ph.D. in anatomy from the University of Iowa in 1985. After postdoctoral work in the Neurology Department at the State University of New York at Stony Brook, he joined BNL's Chemistry Department in 1986. Dewey also holds an appointment at New York University, as a research associate professor in the Psychiatry Department. — Mona S. Rowe

### Public Workshop To Address BNL Environment

On Wednesday evening, April 28, a public workshop will be held on the Environmental Restoration and Waste Management Site Specific Plan for BNL. The meeting will begin at 7:30 p.m., in the cafeteria of the Longwood Junior High School, located on Longwood Road, a half mile west of the Lab's main entrance on William Floyd Parkway. Employees and others are welcome to attend.

BNL's Site Specific Plan is part of the Environmental Restoration and Waste Management Five-Year Plan, which is prepared by the U.S. Department of Energy (DOE) to address environmental issues at all DOE sites. The Five-Year Plan and all of the Site Specific Plans are updated annually.

The formal program on April 28 will include speakers from BNL's Office of Environmental Restoration, Safety and Environmental Protection Division, and Plant Engineering Division. The speakers will be available afterwards for an informal question-and-answer period.

Copies of the BNL document can be found at the Research Library on site, as well as at the Longwood Public Library and the Mastic-Moriches-Shirley Community Library.

## Oh Deer! How Many Are Out There?



Wendy Thomlinson and Jan Naidu observe some of BNL's estimated 640 white-tailed deer.

(See story on page 2.)

## Oh Deer! How Many Are Out There?

A glimpse of deer feeding by the roadside or crossing a wooded area is not unusual at the Lab. But just how many deer are there on site?

After completing an 11-day study to estimate BNL's deer population, Wendy Thomlinson, a senior at the University of Maine at Orono (UMO) came up with an answer — approximately 640.

Thomlinson was already familiar with the Lab from her visits here with her father, William Thomlinson, National Synchrotron Light Source Department. So, when she had to devise a class project for her wildlife management program at UMO, she thought of conducting a survey of the resident deer population.

She made arrangements to do a survey, working with Jan Naidu, Safety & Environmental Protection Division (S&EP). Thomlinson, who plans to specialize in the research aspects of environmental science, enjoyed this fieldwork experience.

"It's so quiet and peaceful just after sunrise, which was the time I did most of the data collecting," she said. "I also appreciated advice from Jan

Naidu, BNL surveyors and my father, which helped me finish the work without significant problems."

Thomlinson's paper has provided BNL with useful basic information about the Lab site. Her method was to observe an aerial photograph, then walk transects of predetermined distances along firebreaks or roads where deer had been seen, recording distances to the deer she observed.

She then entered the data into a computer program for estimating population density and extrapolated the results to the site as a whole.

Said Naidu, who leads S&EP's Environmental Monitoring Group, "Ms. Thomlinson did an extraordinary job in implementing her pro-

gram on site and worked hard to finish the study in spite of difficult weather conditions. Discussions with the New York State Department of Environmental Conservation and others who are using techniques such as aerial surveys and track counting, indicate that the technique she used provides population estimates quickly and with numbers that are believable."

Thomlinson commented that a better estimate might be obtained if transects were placed across the entire Lab site rather than as a sample along roads, but that this would take considerably more time and personnel. "The method used gives a reasonable estimate of the size

of the population," she said.

Naidu agreed. "We'll be doing some follow-up counts occasionally, using this technique. With studies done at different seasons, we may gain a better understanding of the deer population and how it fluctuates."

— Liz Seubert

## IBEW Meeting

Local 2230 IBEW will hold its regular monthly meeting on Monday, April 26, at 6 p.m., in the Knights of Columbus Hall, Railroad Avenue, Patchogue. There will also be an afternoon meeting at 2 p.m. for shift workers in the Union office at 31 Oak Street, Patchogue. On the agenda will be regular business, committee reports and the president's report.

## Fifteen Seniors Win AUI Scholarships

*In this, the 28th year of the scholarship program, 15 daughters and sons of BNL employees have been selected to receive AUI Trustee Scholarships, from among 59 applicants. Each AUI Scholar will receive \$2,500 per year for up to four years of study at the college or university of his or her choice.*

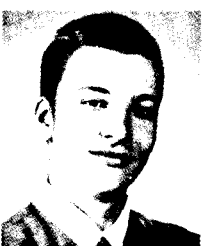
*The selection was made by an independent committee appointed by the College Scholarship Service of Princeton, New Jersey, which administers the program for Associated Universities, Inc. (AUI).*

Melissa Abola is the daughter of Agnes Abola, Alternating Gradient Synchrotron Department, and Enrique Abola, Chemistry Department. She lives in Middle Island, attends Longwood High School and plans to go to Stanford University, where she will major in humanities and music.



Jonathan Barton, son of Donald Barton, RHIC Project, resides in Bellport, where he is a senior at Bellport High School. To major in geology, he will attend Amherst College.

Sanjeev Francis is the son of Arokiasamy Francis, Department of Applied Science. A Middle Island resident, he will graduate from Longwood High School. To undertake premedicine studies, he will matriculate in the Honors College at the State University of New York at Stony Brook.



Geoffrey Hendrey, son of George Hendrey, Department of Applied Science, will attend Boston University, where he will major in engineering. Now attending Shoreham-Wading River High School, he lives in Shoreham.

Laura Koetzle is the daughter of Thomas Koetzle, Chemistry Department, and resides in Dix Hills. Now in her last year at Half Hollow Hills-East High School, she will go to either Harvard University or Yale University to major in English.

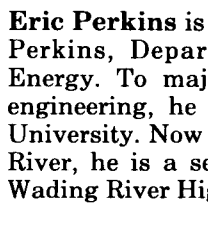


Michele Lamberti, daughter of Claire Lamberti, Department of Applied Science, will major in government at either Dartmouth College or Middlebury College. A resident of Shirley, she will graduate from William Floyd High School.

Grace Liu is the daughter of Judy Liu, Technical Information Division. A resident of Setauket, she is a senior at Ward Melville High School. To major in biological sciences and music, she will probably matriculate at the Honors College of the State University of New York at Stony Brook.



Adrienne Lu, daughter of Ming-Shih Lu, Department of Nuclear Energy, will attend either Brown University, Cornell University, The Johns Hopkins University or Williams College, to study natural science. A Miller Place resident, she will graduate Miller Place High School.



Eric Perkins is the son of Kenneth Perkins, Department of Nuclear Energy. To major in architectural engineering, he will attend Brown University. Now residing in Wading River, he is a senior at Shoreham-Wading River High School.



Lauren Petterson, daughter of Jean Petterson, Chemistry Department, will attend either Fordham University or the State University of New York at Albany, probably to major in journalism. She lives in Sound Beach and is a senior at Rocky Point Junior-Senior High School.



Annatina Schneider, daughter of Dieter Schneider, Biology Department, is a senior at Longwood High School and a resident of Yaphank. To study architecture, she will probably attend either Cooper Union or Cornell University.



Rebecca Siddons is the daughter of D. Peter Siddons, National Synchrotron Light Source Department. A Shoreham resident, she is in her senior year at Shoreham-Wading River High School. To major in creative writing and music, she will attend Princeton University.



Susan Smith, daughter of Alan Smith, Computing & Communications Division, will attend the State University of New York College at Geneseo, where she will major in mathematics and science. A Bellport resident, she will graduate from Bellport High School.



Hirohisa Tanaka, is the son of Michiko Tanaka, Physics Department, and Mitsuyoshi Tanaka, Alternating Gradient Synchrotron Department. A senior at Shoreham-Wading River High School, he lives in Shoreham. To major in physics, economics or history, he will probably attend either Harvard or Yale University.



Elise Vestal is the daughter of Alvin Vestal Jr., Supply & Materiel Division; stepdaughter of Donna Vestal, Reactor Division; and granddaughter of Alvin Vestal, Central Shops Division, and Grace Vestal, Computing & Communications Division. She lives in Coram and is a senior at Longwood High School. She will attend Hampton University, to major in psychology.



## 3 Stray Dogs + 1 Dead Deer = Be Cautious

BNL's deer population was diminished by one this past Tuesday. That's when surveyor Mickey McDowall, Plant Engineering Division, came upon three dogs feeding on a deer's carcass in the woods at the end of Railroad Avenue, which leads to the site of the Relativistic Heavy Ion Collider.

When McDowall approached the dogs, they bolted, but he got a good enough look at them to surmise that the collarless, medium-size dogs — one black, two black and white — were probably litter mates. He contacted his group's safety representative, who notified the BNL Police Group.

While it's not clear whether the dogs killed the deer or were feeding upon one that had already died, all concerned concur that the dogs pose little danger to people. Because a small risk does exist, however, the Lab is making arrangements to try to trap the dogs humanely.

In the meantime, said Bob Casey, Head of BNL's Safety & Environmental Protection Division, "While the dogs do not appear to be menacing, we are advising people to exercise proper caution. Joggers, birders, anyone venturing out to enjoy the fine spring weather — should you encounter any stray dogs, don't approach them, and please do report your sighting to the Police Group, Ext. 2238, immediately."

## Cooking Exchange

The Cooking Exchange will hold an early evening international potluck dinner on Thursday, June 10, in the Recreation Building.

Those currently or formerly involved with the Cooking Exchange, their spouses and children are invited to attend; those attending are required to bring a dish to share. A small admission fee will be charged and, if there is sufficient need, a babysitter will be provided for a small fee. To sign up, contact Laura Gottlieb, 341-1022, or Kyung Hee Ko, 341-1033, as soon as possible.

## Nursery School Holding Bake Sale

The Upton Nursery School, an on-site parent cooperative, will hold a fund-raising bake sale on Thursday and Friday, April 29-30, from 11:30 a.m. to 1 p.m., in Berkner Hall. Information about the school and registration materials for the fall will also be available. For more information, contact Anna Martin, 878-6760.

## Equipment Demos

Protimeter, Inc., a manufacturer of chilled-mirror dewpoint systems and low-pressure instrumentation, will exhibit some of their cycling chilled-mirror hygrometers and low-pressure portable calibration units, in the Berkner Hall lobby on Wednesday, April 28, from 9 a.m. to 2 p.m.

Representatives of Sundance Petroleum, Inc. will be at Berkner Hall on Thursday, April 29, from 9 a.m. to 2 p.m., presenting information on BIO CAT — an environmental and user-friendly, aqueous solvent meant to replace hazardous degreasers.

They will also demonstrate the Power-Up lubricants line and test other lubricants for anyone who brings a sample.

## Volleyball

### Standings as of April 14

<b>Open League — Finals</b>	
GTeam vs. The Roofing Company	
<b>League I — Playoffs</b>	
Network News vs. Upfagras	
VolleyBallAholics vs. Rude Dots	
<b>League II — Playoffs</b>	
Monday Nite Live vs. Netwits	
Safe Sets vs. Nuts & Bolts	
<b>League III — Playoffs</b>	
Jolly Vollyies vs. Silver Bullets	
High Volley'em vs. Volley of the Dolls	

Teams not listed lost in previous rounds.

### Awards Dinner

The Volleyball awards dinner will be held in the North Room of the Brookhaven Center on Friday, May 14, from 5:30 to 11 p.m. Tickets are \$17 per person and include a hot buffet, keg beer, cash bar and music by DJ Lou Naglieri. Tickets purchased after May 10 will cost \$20.

### Captains' Meeting

The last captains' meeting of the 1992-93 volleyball season will be on Wednesday, May 5, at noon, in the conference room of Biology, Bldg. 463. Election of officers for the 1993-94 season is on the agenda.

For more information, contact Terry Sullivan, Ext. 2840; Nancy Sherlock, Ext. 3005; or Ron Webster, Ext. 2845.

## Basketball

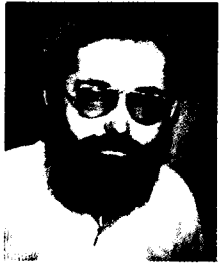
### 2nd Championship Game, April 8

<b>Runaways 87</b>		<b>Magic 81</b>	
W. Cummings	32	D. Hoggard	25
J. Gaeta	20	T. Buck	22
E. Meier	13	J. Garrison	11
P. Ratzke	10	D. Branch	9
C. Saxen	6	M. Tardd	8
B. Doty	4	M. Williams	4
B. Wells	2	L. Walcott	2

Three-point shots: J. Gaeta (2), J. Garrison (3), D. Hoggard, E. Meier

By winning two games and losing none, the Runaways became the 1993 BERA Basketball League Champions.

## Hoffmann and Ramos Win Seats on BERA Board



Augie Hoffmann

Congratulations to Augie Hoffmann, Physics Department, and Bridget Ramos, Department of Nuclear Energy, who have been elected as the newest members of the Executive Board of the Brookhaven Employees Recreation Association (BERA).



Bridget Ramos

Chosen by BERA members during elections, which included a runoff, they will replace outgoing BERA Executive Board members Rick Backofen, Photography & Graphic Arts Division, and Michelle Cummings, Management Information Systems Division. On May 1, Hoffmann and Ramos will join the other six Executive Board members: April Donegain, Fiscal Division; Andrea Epple, Safety & Environmental Protection Division; Haskell Frei, Reactor Division; Betty Pergan, Department of Applied Science; and Rosalie Piccione, Division of Contracts & Procurement.

Votes on the BERA proposal were overwhelmingly in favor of keeping the policy the same, which is: After an Executive Board Member has served a full term of four years, he or she may not run again for at least one year.

## Outreach Workshop Substance Abuse In the Workplace And Beyond

Not only can substance abuse take place in the home, but it can be carried into the workplace. Left unnoticed and untreated, it will be taken home again by a worker at the end of each working day — and at the start of retirement.

"Substance Abuse in the Workplace and Beyond" will be addressed by social worker Amy Yancy, in the next Outreach workshop sponsored by the Employee Assistance Program (EAP) of the Occupational Medicine Clinic.

As Yancy will explain, not only are many substance abusers unaware they have a problem, but also their family members and coworkers may not understand the negative impact that the abuser and his or her bad habits are having on them.

Amy Yancy is the Long Island Regional Director of the Mediplex Group in Hauppauge, which provides alcohol and drug-abuse rehabilitation services in Nassau and Suffolk. She received her M.S.W. from Columbia University School of Social Work in 1964. Certified in the State of New York, she has a private practice in psychotherapy in Hauppauge, specializing in the treatment of people with chemical dependencies.

To register for this workshop, return the Outreach flyer sent to all employees to EAP Staff Psychologist Diane Polowczyk, Bldg. 490. For more information, call Ext. 4567.

## Arrivals & Departures

### Arrivals

John N. Aliberti.....Photo. & G. Arts  
Linxiang Jia.....AGS  
Ondrej Prasil.....App. Science  
John M. Searing.....Saf. & Env. Prot.  
Ulrich C. Wildgruber.....Physics

### Departures

None

## Amateur Radio Club

The regular monthly meeting of the Amateur Radio Club will take place at Berkner Hall, Room D, on Thursday, April 29, at noon. All are invited to attend. For further information, contact Chris Neuberger, Ext. 4160, or Nick Franco, Ext. 5467.

## Local Users Group

The next meeting of the Upton Local Users Group (LUG) will be held on Wednesday, April 28, at 10:30 a.m. in Room B, Berkner Hall. The presentation, "Computing for RHIC," will include talks about computing plans for the Relativistic Heavy Ion Collider (RHIC) construction project, both for the machine and for RHIC experiments.

A major computing facility is needed for processing data from the large detector systems, PHENIX and STAR. Though the computing capacity required is large — in the neighborhood of 100 GFlops — an even more challenging issue is providing efficient access to many terabytes of data for users from around the world.

All computer users are welcome to attend. For more information, send Email to: LUG@BNL or contact Zohreh Parsa, LUG Chairperson, Physics Dept., 901A.

## Garden Plots Now Available

Spring has arrived, and soon it will be time to begin gardening. Sixteen 10-foot square plots will be set aside in the apartment area for on-site residents who wish to grow their own flowers and vegetables. Gardening equipment will also be available. To secure a plot, call Tabitha Tippens, Ext. 1007.

## Tennis Anyone?

The Tennis Committee still has a limited number of tickets for the U.S. Open Tennis Championships scheduled for Tuesday, September 7. The trip cost of \$43 per person includes a \$30 ticket for the day session and round-trip bus fare.

The bus will leave from the Lab's tennis courts parking lot at 8:30 a.m. and stop at Park & Rides off the LIE. Departure from the National Tennis Center will be at 7 p.m. Buy tickets now at the BERA Sales Office.

## Social Club

The Social Club is sponsoring a trip to see the World Wrestling Federation (WWF) at Nassau Coliseum on Saturday, May 1, at 8 p.m. Tickets are \$19 for adults and \$17 for children. Each child's ticket includes a surprise gift and admission to "Mat Chat," a clinic to see and hear from past and present superstars of the WWF, which starts at 6:15 p.m.

To sign up, call Doris Terry, Ext. 7610, by Tuesday, April 27.

## Cafeteria Menu

### Monday, April 26

Soup: Garden vegetable	.80/1.10
Entree: Pizza amore	3.20
Entree: Mexican quiche	3.35
Carvery: Hot pastrami sandwich	2.95
Grill: Reuben platter	2.95
Taster's bar: Wing dings	(oz.) .25

### Tuesday, April 27

Soup: Chicken rice	.80/1.10
Entree: Pasta primavera	3.35
Entree: Lemon-herb chicken	3.45
Carvery: Hot roast beef sandwich	2.95
Grill: Catch of the day	3.95
Taster's Bar: Buffalo wings	(oz.) .25

### Wednesday, April 28

Soup: Heartland cheesy cheddar	.80/1.10
Entree: Tuna noodle casserole w/veg.	3.35
Entree: Chili con carne w/bistro bread	3.45
Carvery: Hot ham sandwich	2.95
Grill: BBQ pork sandwich w/French fries	3.35
Taster's Bar: Pizza bagels	(oz.) .25

### Thursday, April 29

Soup: Split pea	.80/1.10
Entree: Baked tomato & broccoli	3.20
Entree: Hawaiian baked fish	3.65
Carvery: Hot corned beef sandwich	2.95
Grill: Grilled cheese quartet	2.95
Taster's Bar: Baked potato bar	(each) 1.50

### Friday, April 30

Soup: Boston fish chowder	.80/1.10
Entree: Chicken Kiev w/veg.	3.85
Entree: Fried sole w/veg.	3.65
Carvery: Hot turkey sandwich	2.95
Grill: Vegetable burger in pita bread	3.35
Taster's Bar: Seafood nuggets	(oz.) .25

### Movie Night... Brookhaven Center

Wednesday, April 28... 8 p.m.  
Last of the Mohicans... free popcorn!

## Calliope Returns for Season's Last Concert

Calliope, a quartet that performs the music of the European Middle Ages and Renaissance as well as contemporary and early American music on a variety of instruments, will return to Brookhaven to perform the last BERA concert of the 1992-93 season, on Tuesday, April 27, at 8 p.m., in Berkner Hall.

Named for the mother of Orpheus and the chief of the muses, Calliope has been praised by *The New York Times* for its "imaginative and stylistically sensible performances." Winner of the 1975 Naumburg Chamber Music Award, the Renaissance band has toured all over the United States, Canada and Mexico.

Calliope, which last appeared at BNL in 1988, has performed in major concert halls, including Alice Tully Hall in New York, and at universities and symphony orchestras.

The varied program for the Brookhaven concert consists of music from the time of Christopher Columbus (c.1410-1521). Included will be pieces from composers in German lands, Burgundy, Italy and Spain. In addition, Calliope will perform *Settings of L'homme armé* and a piece that



Calliope: A Renaissance Band

the group composed in 1989 called *Improvisation*.

Tickets for the concert can be purchased at the door for \$12, general admission; \$9, students and people over age 65; and \$5, youths under 18.

# BROOKHAVEN BULLETIN

Published weekly by the Public Affairs Office for the employees of BROOKHAVEN NATIONAL LABORATORY

ANITA COHEN, Editor  
MARSHA BELFORD, Assistant Editor

35 Brookhaven Ave., Upton, N.Y. 11973  
(516) 282-2345

## No Tickets Left For Dinner-Dance

Due to overwhelming sales, tickets are sold out for tonight's Swing Into Spring dinner-dance at the Brookhaven Center. As a result, there are no tickets left to be sold at the door.

In fact, the BNL Dance Club, which is sponsoring the event, will buy back tickets already purchased from anyone who can't make it tonight, for resale to people on a waiting list. To turn in tickets, call Marsha Belford, Ext. 5053.

The club regrets any inconvenience this sellout may cause, but invites all to buy tickets early for the club's next dance, to be scheduled in the fall and announced in the Bulletin.

## Classified Advertisements

### Placement Notices

The Laboratory's placement policy is to select the best-qualified candidate for an available position. Consideration is given to candidates in the following order: (1) present employees within the department/division and/or appropriate bargaining unit, with preference for those within the immediate work group; (2) present employees within the Laboratory; and (3) outside applicants. In keeping with the Affirmative Action plan, selections are made without regard to age, race, color, religion, national origin, sex, handicap or veteran status.

Each week, the Personnel Division lists new placement notices. The purpose of these listings is, first, to give employees an opportunity to request consideration for themselves through Personnel, and, second, for general recruiting under open recruitment. Because of the priority policy stated above, each listing does not necessarily represent an opportunity for all people.

Except when operational needs require otherwise, positions will be open for one week after publication.

For more information, contact the Employment Manager, Ext. 2882, or call the JOBLINE, Ext. 7744 (282-7744), for a complete listing of all openings.

**OPENER RECRUITMENT** - Opportunities for Laboratory employees and outside candidates.

DD 5526. **TECHNICAL POSITION** - Requires BS or equivalent and previous experience in a networked microcomputer-support function. Will support the acquisition and use of PC and Macintosh computers Labwide, and provide application consulting and "hotline" assistance. Will design, organize and conduct courses for application packages such as Lotus, WordPerfect, Windows, and research new technologies and applications. Computing and Communications Division.

### Motor Vehicles & Supplies

91 MAZDA MPV - V-6, a/t, ac, alarm, stereo, 29.5k mi., \$11,990. Ext. 3814.

90 CHEVY CAVALIER - a/t, p/s, p/b, ac, new tires & brakes, good cond., \$4,250. Dawn, Ext. 2463 or 543-4820.

89 PONTIAC LEMANS - p/s, p/b, a/t, alarm, excel., \$5,500; '84 Pontiac Transam, p/s, p/b, a/t, good cond., \$1,500 neg. 277-2671 after 6 p.m.

89 GEO METRO - 4-dr., 5 spd., ac, am/fm, 91k mi., \$2,495. Joe, Ext. 2898 or 728-1859 eves.

87 HONDA ACCORD DX - 4-dr., a/t, ac, cass., 80k mi., mint cond., asking \$5,800. 928-7734.

87 CAMRY - gray, a/t, ac, am/fm cass., 4-cyl., gar., mint cond., ask. \$5,300. Ext. 5462 or 758-4770.

87 HYUNDAI - 5 spd. h/b, gray, runs well, \$2,000. Ext. 2517 or 698-2798.

86 PONTIAC GRAND PRIX BROUGHAM - ac, tilt, cruise, am/fm cass., p/windows, p/l, p/seats, front-end damage, \$1,800. 924-6073.

86 SPORTSCRAFT MOTOR HOME - 23', fg, sleeps 6, mint cond., \$12,000. Scotty, 732-5445.

85 RENAULT ENCORE - p/b, p/s, ac, all factory options of 1985, stereo, 69k mi., \$1,900 neg. Frank, Ext. 3524 or 281-4266.

85 BUICK CENTURY - p/s, p/b, ac, good cond., asking \$1,800. Dick, Ext. 4313 or 722-4094.

85 BUICK REGAL - 2-dr., 5 spd., 30+ mpg, sun-roof, am/fm, new tires, water pump, \$1,885; '84 Dodge Daytona, 2-dr. h/b, 5 spd. Jack, Ext. 4037.

84 DATSUN SENTRA - 5 spd., ac, needs work, 110k mi., \$250. Ext. 3814.

81 CHEVETTE - 4-dr., 4-cyl., best offer, must see. Patriche, Ext. 2463 or 286-4037.

81 JEEP WAGONER - 4wd, all power, eng. 60k mi., \$1,500. Scott, Ext. 5319 or 929-4563.

81 RABBIT VW - convertible, fun to drive despite high mileage, asking \$1,300. Genie, 286-2267.

78 CHEVY MONTE CARLO - 350 motor, clean, asking \$1,300. Steve, Ext. 3849 or 929-0586.

78 BLAZER 4x4 - full-size, removable top, \$1,800. Earle, Ext. 4308.

77 WINNEBAGO MOTOR HOME - 25', Chevy chassis, 350 V-8, very clean, v.g. to excel. cond., asking \$8,000. Tony, 727-3863.

74 HARLEY DAVIDSON XLCH SPORTSTER - v.g. cond., \$2,500. Roger, Ext. 7918 or 878-8847.

73 PLYMOUTH VALIANT - 225 slant six, 36k orig. mi., \$1,800 or best offer. Dan, Ext. 4830 or 736-2761.

68 MUSTANG - red, 302 V-8, rebuilt trans., battery, brakes, shocks, exhaust, am/fm cass., Clarion, must sell, \$2,500. 399-2179.

OIL-CHANGING EQUIPMENT - ramps, large drip pan, filter wrench, \$15. Wink, 874-2762.

SERVICE MANUAL - 1990 Mazda 626 LX, \$25. Ext. 5054 or 286-5897.

### Boats & Marine Supplies

26' SAILBOAT - 1976, Chrysler 1991 9.9-h.p. Johnson, swing keel, roomy, clean, sleeps 5, \$5,000. Tom, Ext. 7115 or 744-5801.

23' 4 WINNS - 1986 240-h.p. Merc. i/o, many extras, excel. cond., trailer optional, \$9,900. Charlie, Ext. 2407.

22' MARSHALL CATBOAT - freshwater-cooled Yanmar diesel, VHF radio, depth sounder, Danforth compass, head. Gordon, 477-2269.

21' CHRIS CRAFT - 1988, Bowrider, i/o Merc., 8'6" beam, canvas, am/fm, bottom not painted, E-Z Load trailer, \$11,500. 732-8793.

20' RENKEN 86 - 140 OMC i/o, trailer, v.g. cond., \$4,700. 929-4369 after 6 p.m.

18' TAHITI - boat & trailer, no motor, \$550. Steve, Ext. 4414.

17' MFG - fg, w/50-h.p. Mercury ob., incl. trailer, runs well, \$950. Mike, 929-8443.

16' CANOE - fiberglass, \$250 firm. 924-4927 after 6 p.m.

SAILING RIG - by Old Town for canoe, incl. sail, mast, leeboards, rudder, etc., \$175. Bob, 261-3890.

LOBSTER POTS - 2, wood, new, never used, \$20 ea. John, Ext. 2769.

### Furnishings & Appliances

BED FRAME - Danish wooden, 180cm x 200cm, best offer. Hansen, Ext. 2384.

ELECTRIC RANGE - GE, self-clean, timer, temp. control, good cond., \$150; Kitchen Aid dishwasher, 7 programs, works, \$40. Eve, Ext. 3701.

GAS STOVE - almond, Kenmore, double oven, top & bottom, \$150 neg. Ext. 7238.

CABINET - Hoosier, oak, restored, good cond., 69"Hx49"Wx27"D, \$475. Wink, 874-2762.

COLLECTIBLES - some antiques, big variety, water bed, air conditioners, \$50-\$75; love seat, \$60. Kathy, 929-8443.

HUTCH - country pine, new cond., orig. \$3,000, sell for \$350. S. Saxon, 744-3842.

LOUNGE - Danish style w/trundle bed, \$40; homemade door table, coffee table, 4 maple dining chairs, \$5/ea. Tom, Ext. 7196 or 286-2505.

MEDICINE CABINET - 3 doors, mirror; sliding mirrored closet doors. 924-2864.

RANGE - Caloric, 4-burner, nat. gas, \$50; Norge washer, Westinghouse dryer, \$100/ea., or \$160/both. Frank, Ext. 7519, or Vita, 277-0464.

TABLE - hatch cover, desks, l/r, d/r, bedroom sets, TV, lamps, cedar wardrobe, file cabinet, curio cabinets, etc. 924-4927.

TRASH COMPACTOR - GE, full size, old, works well, \$50. Ext. 7699 or 821-1435.

TWIN BED - w/mattress, excel. cond., box spring, frame, \$35. Cai, Ext. 3507.

### Tools, House & Garden

ANNUALS/FLOWERS - \$11/flat, \$6/half-flat; vegetables, \$1/pack, large selection. Ray, 727-6818 after 4 p.m.

DEEP WELL PUMP - 1-h.p., almost new, \$250. 924-8558 after 5 p.m.

LAWN MOWER - push-type, \$15; white pines, nursery grown, up to 3' high, \$3/ft. John, 744-5827.

LAWN TRACTOR - Craftsman, 11-h.p., 36" deck, spreader attach., snow blower, grass catcher, \$600. Dan, Ext. 4987 or 698-7322.

OIL BURNER - Wayne retention head, \$75. Ext. 4924 or 286-6858.

PATIO FURNITURE - 42" round table, 4 chairs w/yellow striped cushions, v.g. cond., never left out, \$75. Sue, Ext. 7238 or 395-3529 after 5 p.m.

RADIAL ARM SAW - 10", steel stand, w/drawers, many blades, attach., \$250. 924-4927 after 6 p.m.

SPREADER - for the lawn, good cond., used 1 season, \$10. Wink, 874-2762.

### Sports, Hobbies & Pets

BICYCLE - 10 spd., w/child's seat, good cond., \$85. Roger, Ext. 7518 or 878-8847.

BIKE - 10 spd., man's 24", reasonable cond., \$40 neg. Dan, Ext. 2378 or 758-3284.

BELGIAN SHEEPDOG - to adopt, all black, male, neutered, 1 1/2 yrs. old, all shots, healthy, housebroken, loves outdoors, will deliver. 586-1350.

BORDER COLLIE MIX - female, loves children, 2 yrs. old, all shots, neutered, free to loving home. Ron, Ext. 2535 or 286-0353 after 6 p.m.

FERRETS - 1 male, 3 female, cage, access., all shots, neutered, \$100/three; Louisville baseball glove, 1st base, left hand, \$25. 924-8558.

HEALTH CLUB MEMBERSHIP - Jack LaLanne Gold at Lake Grove, annual dues, \$84/yr. payable each June, no transfer fees, asking \$300. Susan, Ext. 7318.

HEALTH CLUB MEMBERSHIP - Jack LaLanne Gold, no annual dues until 6/94, \$700. 395-3407.

PUPPIES - Rottweilers, AKC, champion bloodlines, shots, wormed, 3 generations on premises, 5 males. Chris, 654-1146.

PUPPIES - Rottweilers, certified pedigree, AKC, champion lines, both parents OFA certified excellent temperament lines. 698-0162 after 6 p.m.

SADDLE - English, Stubben, 16 1/2", all-purpose w/fittings, excel. cond., \$375. Pat, Ext. 5406.

### Audio, Video & Computers

AMATEUR RECEIVER - Hallicrafters, top of the line, \$75 neg. Gene, Ext. 3445 or 273-1989.

CAMCORDER - Sharp, 8mm, like new, lots of extras, orig. \$1,500, ask. \$1,000. Ruth, Ext. 3305.

COMPUTER - Radio Shack, portable, model 4, many TRS programs, excel. WP, spreadsheet, mint cond., \$75. 727-6481.

The Brookhaven Bulletin is printed on paper containing at least 50 percent recycled materials, with 10 percent post-consumer waste.



COMPUTER - notebook, Compodyne 486, 33 MHz, 120 meg hard disk, 8 meg RAM, built-in Traceball, used little, \$1,800. Tom, Ext. 3454.

COMPUTER - Mac Plus, 4 MB RAM, 20MB HD, \$500; Mac video digitizer, b/w, software, \$500; plotter, HP color, \$500. Ext. 7699 or 821-1435.

COMPUTER - Commodore 64, w/1541 floppy drive, excel. cond., \$95. Zal, Ext. 7598.

COMPUTER - Commodore 64, printer, keyboard, joysticks, games, loads of floppy disks, \$250/all. 924-8558 after 5 p.m.

NINTENDO BASIC SYSTEM - w/Super Mario 3, \$60. Alex, Ext. 3723 or 341-1018.

NINTENDO SYSTEM - \$40; power glove, \$25; max control, \$15, \$75/all; games, \$12/ea. or \$30/three. Ext. 7505.

### Miscellaneous

BRIEFCASE - brown leather, beige suede interior, 12"x27", combination locks, never used, \$45. Darcy, Ext. 3362.

ENGAGEMENT RING - diamond, 14k gold, \$550 or best offer. Shawn, Ext. 5741.

GOWN - formal, size 6-8, deep pink, matching crinoline; matching shoes, size 8 1/2, from bridesmaid, perfect cond., \$80. 929-4446.

NURSING PUMPS - Evenflow manual, \$20; deluxe battery pump, w/adaptor, new \$58, sell \$40; both used once, sterilized. Lorraine, 929-3910.

SUITCASE - on wheels, \$20; Snapper mower, \$40; kitchen chairs, \$20/ea.; wood kitchen table, \$50; pink rug, \$10. Kathy, 744-2203.

TV - B&W, 15", \$25. Bill, Ext. 3254.

ELECTRIC TYPEWRITER - Olympia, excel. cond., no programming features, best offer. Ext. 2610 or 924-5272.

WATCH - Seiko woman's, link bracelet, gold tone, worn once, orig. \$250, now \$125. Theresa, Ext. 2907.

WOMAN'S RING - 14K gold, 2 carat diamond cocktail ring, size 10, w/\$3,195 appraisal, \$1,100. Ruth, Ext. 3305.

### Free

CAT - female, black tortoise-shell, declawed, spayed, needs a good home. Vic, 543-7674.

GOLDEN RETRIEVER - male, 1 1/2 yrs., great with children, AKC. 722-3010.

FIREPLACE - free-standing w/stone seat and chimney. Janet, Ext. 2345 or 924-3910.

### Yard & Garage Sales

WADING RIVER - collectibles, some antiques, much more, call for times. Kathy, 929-8443.

### Car Pools

BOHEMIA-E. ISLIP-OAKDALE-SAYVILLE - need 1 more driver. Frank, Ext. 2314.

CUTCHOGUE - 8 a.m.-4:30 p.m. Roger, Ext. 2382.

### Real Estate

*Real Estate advertised for sale or rent is available without regard for the race, color, creed, sex or national origin of the applicant.*

### For Rent

CORAM - large, older house on acreage, \$850/mo. + util. 732-2219.

E. MORICHES - 2-bdrm. apt., 2nd floor of Victorian house, bath, kit., l/r, 3 blocks to bay, shops, school, \$635/mo. + util. Mona, Ext. 5056 or 878-9384 eves.

HAUPPAUGE - Windbrook condo, 2-bdrm. ranch, LIE Exit 56, 30 min. to Lab, all appl., cac, w/w. pool, move in, \$900/mo. Vita, 277-0464, or Frank, Ext. 7519.

MASTIC PARK - extra-large 1-bdrm., heat, city water, cable, sec., ref., \$600/mo. 281-7844.

MIDDLE ISLAND - furn. 2-bdrm. condo, 1 1/2 baths, cac, all appl., 5 min. to Lab, clubhouse, \$875/mo. + util. 751-8351.

MILLER PLACE - 1-bdrm. apt., paneled kit., l/r, full bath, w/w. priv. ent., quiet neighborhood, \$560/mo. includes all. 928-0993 after 4 p.m.

PATCHOGUE - 1-bdrm. cottage, water view, d/r, l/r, eik, \$650/mo. + sec. 475-4199.

PORT JEFFERSON - sunny studio apt., pvt. ent., nonsmoker, no pets, full kit., bath, quiet neighborhood, includes util. & cable. 331-4768.

RIDGE - 3-bdrm. ranch, 1 1/2 baths, country kit., w/w, fenced yard, 3 miles from Lab, \$975/mo., option to buy. Carol, Ext. 2673 or 744-8632.

RIDGE - large 1-bdrm. apt. w/priv. ent., full bath, w/w, 5 min. to Lab, no pets, avail. immed., \$650/all, sec. Ext. 5076, 744-6836 or 744-4615.

ROCKY POINT - new apt., 1 bdrm., eik, l/r, downstairs, w/w, quiet neighborhood, priv. ent., free cable, lighted, ventilated, \$500/mo. 744-5895.

SHIRLEY - 3 bdrm., l/r, d/r, kit., full bath, w/w, fenced yard, 1 mi. Smith Point, 8 mi. to BNL, \$825/mo. + util. 744-5448 after 5 p.m.

SHIRLEY - 3-bdrm. ranch, full bath, kit.-d/r combo, l/r, full bsmt., 1-car gar., new carpet, new cond., \$950/mo. + util. & sec. 399-6166 eves.

SHIRLEY - studio apt., priv. driveway & ent., one employed person only, nonsmoker pref., 10 min. to Lab, \$450/mo. Helen, 281-6263.

SHOREHAM - new 1-rm. apt., full bath, kit., sep. thermostat, priv. ent., 10 min. to Lab, quiet, single nonsmoker, no pets, immed. occup. 821-4318.

SOUND BEACH - 2-bdrm. apt., bath, l/r, eik, walk to beach & shopping, \$650/mo. + elec. & sec. Ext. 2671 or 744-3284 after 4 p.m.

YAPHANK - 3-bdrm. condo, 2 1/2 baths, ac, carpeted, 5 min. to Lab, attached gar., avail. 5/1. Haleem, Ext. 7482.

ORLANDO, FL - time-share 1-bdrm. apt., fully equipped, 5 min. to Disney World, 1 week, Fri.-Fri., up to July '93, \$600/wk. Ext. 2683 or 751-2469 eves.

MT. DESERT ISLAND, MAINE - lakefront, full furn. 1 rm. cottage w/sleeping loft, kitchenette, bath, fp, deck on Echo Lake, Acadia Nat. Park, 6/26-10/16, \$450/wk. Bob, Ext. 2514.

LAKE GEORGE, NY - lakefront cottage, swimming, 15' from your door, fishing, boat docking, fully equipped, kit., sleeps 4-5, 4 hrs. from NYC. (518) 747-7821 or (518) 499-2581.

HILTON HEAD, SC - 2-bdrm. condo, sleeps six, fully furn., 2 baths, pool, beach, golf nearby, April-Sept., \$450/wk. Guy, Ext. 3147 or 689-5378.

### For Sale

BAY SHORE - large 1-bdrm. co-op., 2nd floor, renovated, bright, cac, eik, fd/r, l/r, bath, w/w, terrace, security/gate, ample parking, \$70,000 or rent w/option. Kevin, Ext. 5865.

BELLPORT - 3-bdrm. ranch, l/r w/tp., d/r, bath, full bsmt., 20'x16' deck, det. 3-car gar., shy 1/2 acre, SCSD, city water, near village & Bellport dock, ask. \$129,990. Maryann, Ext. 5241 or 286-3377.

BROOKHAVEN HAMLET - 4-bdrm. Col., 2 1/2 baths, l/r, d/r, fam. rm. w/tp, eik, laundry rm., 2-car gar., full bsmt., lg. screen porch, on cul-de-sac, \$239,000. Ext. 2881 or 286-3372.

CALVERTON - 2-bdrm. townhouse, 5 appl., carpeted, cac, fp, patio, upper deck, neg., assum. mortg. Ext. 3558.

CENTEREACH - 3-bdrm. split level, 1 1/2 baths, l/r, d/r, eik, den, laundry rm., bsmt., gar., patio, shed, new OHWH, Marilyn, Ext. 5075 or 585-1863.

CENTER MORICHES - Main St., business property, 3 rentals, all occupied, will hold some paper. 878-1178.

E. MORICHES - 1/2-acre treed corner bldg. lot, city water, & gas avail., 1 block to village, \$60,000. Mike, Ext. 4028 or 878-2571, leave message.

EAST PATCHOGUE - 4-bdrm. Cape, 2 baths, OHWH, 2/3 acre, 9 skylights, south of South Country Road, \$170,000. 924-4927.

E. SETAUKET - 4 bdrm. split level, 2 1/2 baths, 3VSD, rear deck, igp/igs, beautifully landscaped, \$184,900. 473-5376.

E. SETAUKET - 4-bdrm. Worthington Col., 0.51 wooded acre lot, 2 1/2 baths, 2-car gar., bsmt., oak floors, new siding & roof, appl., 3VSD. J. Lee, Ext. 2248 or 689-8584.

MIDDLE ISLAND - lakefront 2-bdrm. co-op, upper unit, clean, bright, newly painted, l/r, d/r, kit., all appl., cac, gas heat, w/w, pool, tennis, clubhouse, 10 min. to Lab, \$56,000 neg. 924-5282.

MIDDLE ISLAND - 1 lg. bdrm. condo, 1 bath, excel. cond., 6 appl., cac, gas heat incl. in condo charges, pool, clubhouse, tennis, some furn. avail. Liz, 924-0138 after 5 p.m.

MIDDLE ISLAND - 2-bdrm. condo, mint cond., French doors, GE appl., low common charges, pool, clubhouse, cac, 5 min. from Lab, \$78,000 neg. Mark, 924-1561 after 3 p.m.

MILLER PLACE - 2-3 bdrm. Cape Cod, full dormer, RPSD, full bsmt., 0.27 acre fenced, priv. deck, fp w/wood stove, 4-zoned OHWH, 1 1/2-car heated detached gar., appl., \$113,000. 744-4386

RIDGE - custom-built 4-bdrm., 1+ acre, hardwood floors, Andersens, 2,500 sq. ft., 2 1/2 baths, skylight, lg. bsmt., 3-zone heat, gar., fam. rm., l/r, d/r, kit., extras, must see, \$165,000. 924-3476 after 5 p.m.

RIVERHEAD - 12'x45' mobile home, oil heat, new furn. & appl., shed, \$12,000 neg. 727-6607.

ROCKY POINT - 4-bdrm. Col., 2 1/2 baths, gas heat, cac, l/r, d/r, eik, den, fin. bsmt., gar., low taxes, ask. \$130,990. Don, Ext. 7237 or 744-2921.

SAYVILLE - 2-bdrm. Cape, mint, renovated, eik, gar., carpet/ceramic tile, new boiler, easy maint. low taxes, \$118,000. Ext. 5327 or 567-8179.

SOUND BEACH - MPD 3-bdrm. ranch, 2 baths, eik, d/r, rec. rm., cac, 2-car gar., landscaped for birds, 18 min. from Lab, corner 0.32 acres, fenced, trees, \$136,500. Mara, 821-0469.

WADING RIVER - on the beach, year-round, airy 10-rm. home, 2 decks facing Sound, modern Euro kit., SWRSD, \$259,000. Kathy, 929-8443.

WADING RIVER - 3-bdrm. ranch, private beach community, steps to beach, eik, fd/r, ac, trees, bsmt., deck, lg. shed, 1 1/2 baths, cyclone fence, 1/2 acre, low taxes, \$119,900. Saxon, 744-3842.

DELAWARE COUNTY, NY - 62 acres, 1390' frontage on road + furn. cabin w/wood stove, all wooded w/stone wall boundaries, excel. deer and turkey hunting, walk to lake, \$75,000. 878-5836