

## First Finding From FACE Forest

Researchers in BNL's Department of Applied Science (DAS) and at Duke University report that loblolly pine trees grown in a simulated 21st-century atmosphere of increased carbon dioxide (CO<sub>2</sub>) show a marked increase in their rate of photosynthesis.

In a season-long experiment from June to September, 1994, the researchers found that the rate of photosynthesis in pines growing in elevated CO<sub>2</sub> was 65 percent higher than in pines growing in the present day's CO<sub>2</sub> environment. They also found that the trees' water consumption did not change in response to the elevated CO<sub>2</sub>, unlike the decrease seen in previously studied crops and herbaceous plants.

David Ellsworth, DAS tree physiologist, said, "Ours is the only study of this sort that has ever been conducted in a forest, yet one-third of Earth's land mass is covered by forests. Up to now, we have not been able to study how an entire forest would respond to increased CO<sub>2</sub>."

Principal researchers in the study also include ecologist George Hendrey, DAS, and tree physiologist Ram Oren, of Duke University. Their work is described in a paper to be published this fall in the journal *Oecologia*.

### About FACE

The forest experiment was the first use of FACE technology in a forest environment. FACE, which stands for free-air carbon-dioxide enrichment, was developed by Hendrey and colleagues at BNL to study effects of enhanced CO<sub>2</sub> on plants in their natural environment. Only such experiments, conducted in open air rather than in greenhouses or any other types

of enclosures, can mimic "real world" conditions in order to simulate how entire ecosystems will cope with the predicted CO<sub>2</sub>-rich atmosphere of the next century.

Levels of CO<sub>2</sub> in the atmosphere have risen from 280 parts per million (ppm) at the beginning of the Industrial Revolution in the late 18th century to 355 ppm today, an increase of over 25 percent, primarily because of increased fossil-fuel combustion. Scientists expect that the current level will double some time in the next century.

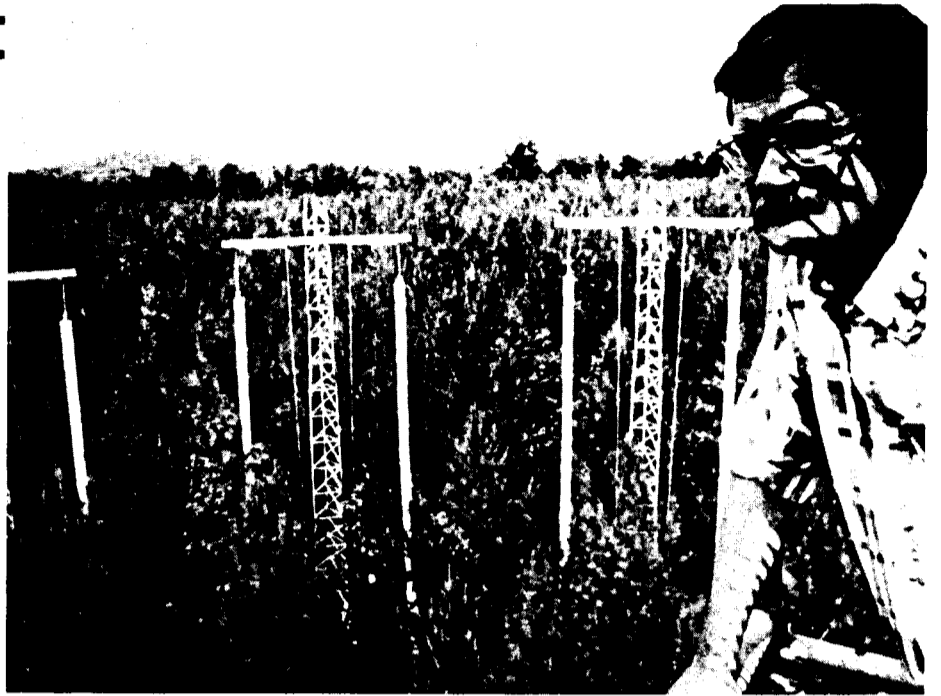
Hendrey has previously used FACE to evaluate effects of increased CO<sub>2</sub> on agricultural crops in Mississippi and Arizona, and on grassland in Switzerland.

In the FACE system, an array of vertical pipes encircling the test area releases CO<sub>2</sub> in a computer-controlled mixture with ambient air. The computer measures wind direction, wind speed and the CO<sub>2</sub> concentration in the center of the array, and uses this information to adjust the rate of gas to be released on a second-to-second basis. The resulting environment is as close as practical to the atmosphere expected to prevail in the middle of the 21st century.

### In the Duke Forest

The forest experiment was carried out on mature loblolly pine trees in North Carolina, in a forest owned by Duke. Used for timber, loblolly pines are the mainstay of the lumber industry in the Southeast.

While increased photosynthesis may result in faster-growing trees and, hence, more wood, the researchers caution against viewing their results



George Hendrey in the loblolly pine forest at Duke University.

as entirely good news. It is not yet clear that the extra photosynthesis will be reflected in faster growth.

Said Ellsworth, "These are early findings, and there are many questions still unanswered. What about competition from other trees? Will the forest outstrip the soil's capacity to support enhanced growth? Would faster-growing wood be more brittle? It's not so simple."

### The Experiment Ahead

Already begun is a much broader, multi-year experiment (see Brookhaven Bulletin, May 19, 1995). Besides continuing the tree physiology work, this next experiment will include soil and atmospheric studies.

Dozens of ecologists and plant biologists will work at the Duke forest site, collecting data not only on loblolly

pinus, but also on sweetgums, dogwoods, honeysuckle and junipers, and on microbes and soils. Results from the study will be used in global computer models to predict the role of vegetation in future CO<sub>2</sub> exchange with the atmosphere.

The FACE approach gives many biological scientists access to a large facility that encompasses hundreds of individual plants in an intact ecosystem. This reduces the cost per scientist dramatically. The net effect is an economical way to build an understanding of how a particular ecosystem will respond to rising levels of CO<sub>2</sub>.

FACE research is supported by the U.S. Department of Energy's Office of Health and Environmental Research, Ecological Research Division.

— Mona S. Rowe

## BNL Lecture: Using PET To Image Drug Addiction

The stark photo on the front cover of *Time* magazine of May 13, 1991, publicized the tragedy of "Crack Kids" discussed in the lead article on cocaine addiction. On the back cover was a compelling ad for cigarettes.

Similar examples can be easily found in many magazines, but such familiar contradictions surprise few readers.

Yet, statistics show that nicotine and alcohol, both legal, account for most of the mortality induced by legal and illegal drugs of addiction. And drugs both legal and illegal contribute to addicts' acts of violence and crime.

Until the present, very little has been known about why people like drugs, and, therefore, how they might be treated.

At BNL, however, scientists and chemists are using Positron Emission Tomography (PET), a medical-imaging technique, to investigate human brain chemistry and how it is altered by drugs such as cocaine and alcohol.

To describe her and her colleagues'

internationally renowned PET research, Scientist Nora Volkow, the Medical Department's Director of Nuclear Medicine and Associate Chief of Staff of the Clinical Research Center (CRC), will deliver the 308th

Brookhaven Lecture, on Wednesday, September 13. Her talk, the first of the 1995-96 series (see box on page 2), is entitled "Live Images of the Addicted Brain As Seen Through PET" and will begin at 4 p.m. in Berkner Hall. Volkow will be introduced by Senior Chemist Joanna Fowler.

In her talk, Volkow will explain the PET technique, which essentially provides a "window"

into the functioning brain of the subject. By labeling drugs with one of the positron emitters developed at BNL, and measuring the concentration and location of the tiny amounts of radiation emitted, researchers get information about the patient's brain metabolism, the concentration of receptors,

(continued on page 2)



Nora Volkow at BNL's Positron Emission Tomography facility.

Roger Stouenburgh

## Melucci Heads Budget Office

At a time when the Lab's budgeting process faces sweeping change, Richard Melucci has been appointed BNL's Budget Officer, effective September 1.

Melucci, the former Administrative Manager for the Department of Applied Science (DAS), will now head a staff of 14 who oversee the financial management of the Lab's budget.

He will also lead a review of Laboratory-wide overhead costs, the charges for support services that are distributed across all the Lab's scientific programs. The review will not include department and division overhead costs.

The project will attempt to determine whether different methods of distributing overhead could better fit in with a "causal-beneficial" approach — one that says that those who help cause the need for an overhead-funded activity should be charged for a proportional part of its cost.

Starting with the fiscal year 1998 budget submission process that begins in January, the Lab has a commitment to the U.S. Department of Energy (DOE) to make such changes. After the Budget Office carries out its review and makes recommendations, it will present them to Lab management for discussion and acceptance.

Henry Grahn, Associate Director for Administration, expressed his belief in Melucci's ability to face the challenge. "Dick has demonstrated excellent financial and administrative skills in his past 21 years of service at BNL," he said. "I am confident he will



Roger Stouenburgh

Richard Melucci

continue to use his good judgment and expertise in carrying out the important responsibilities of the position in the same outstanding manner."

Melucci came to BNL's Physics Department in 1974, several years after receiving his master of business administration degree from Adelphi University, where he had earlier earned a bachelor's degree in applied physics.

After five years of managing Physics' budget and financial planning, he moved to DAS as department administrator and later department administrative manager. The department's

(continued on page 2)

**BNL Lecture**

(cont'd.)

which are the molecules that receive messages into the brain, and the concentration of enzymes, which catalyze the chemical changes.

As well as recalling Brookhaven's significant PET findings on alcoholism, Volkow will detail the present BNL cocaine investigations, which have documented for the first time that cocaine causes a chemical change in the brain, affecting regions responsible for an individual's ability to control repetitive behavior, as well as impulsive behavior. Another important finding is that prolonged, heavy use of cocaine can deaden areas of the brain for a long time, possibly permanently.

Also, Volkow will describe the comparative studies she has done using methylphenidate and cocaine, which may explain the compulsive, repetitive behavior of cocaine users. This information could be the first step in developing new drugs for treatment.

After Nora Volkow received her M.D. degree at the National University of Mexico, in 1981, she became a resident in New York University's Department of Psychiatry 1981-84. She moved to an assistant professorship in psychiatry and behavioral science at the University of Texas Medical School at Houston, 1984-87.

During those six years, Volkow was also a BNL research collaborator, until she joined the Medical Department staff as a scientist in 1987, with a joint appointment as associate professor in the Department of Psychiatry at the State University of New York at Stony Brook. She was named CRC Associate Chief of Staff in 1990 and Director of

Nuclear Medicine in 1994, at which time she also started lecturing in the Department of Psychiatry at Columbia University.

Volkow's pioneering research has spanned the fields of schizophrenia, cocaine addiction, alcoholism, clinical pharmacology and aging. Her publications include over 120 peer-reviewed

articles and about 40 book chapters and papers in conference proceedings. She has edited three books.

After the lecture, all are invited to join Volkow for discussion and refreshments. Those wishing to have dinner with the speaker at a restaurant off site should call Amalia Ruggiero, Ext. 3673.

— Liz Seubert

**1995-96 Brookhaven Lectures**

So many diverse fields of research are covered by BNL as a multiprogram national laboratory, that people working in one area may have little opportunity to learn what is happening in another.

The Brookhaven Lecture Series, founded in 1960, provides such an opportunity. The series is overseen by the Brookhaven Lecture Committee, currently chaired by William Morse, Physics Department, with Robert Crease, Director's Office, serving as Secretary.

All remaining lectures in the 1995-96 series, listed below, will be held on Wednesdays at 4 p.m.

Date	Speaker	Subject
Oct. 11	Charles Springer Chemistry	Magnetic Susceptibility in MRI: Chemistry From Brain Artifact to Activation
Nov. 15	Robert Crease Director's Office	Lab History: The Goldhaber Years
Dec. 13	Sonja Haber Advanced Technology	Human Factors in Safety Performance
Jan. 17	C. Ruth Kempf Advanced Technology	Safeguards Cooperation Programs With Russia
Feb. 14	John Tranquada Physics	What's New In High-Temperature Superconductors?
Mar. 20	Michael Brennan AGS	Accelerating High-Intensity Beams at the AGS
April 17	Ilan Ben-Zvi NSLS	Laser Accelerators and Their Inverses
May 15	A.J. Francis Applied Science	Bioremediation of Contaminated Soils and Waste
June 19	Peter Thieberger Physics	You Can Teach an Old Machine New Tricks — The BNL Tandem Story

All Brookhaven Lectures are recorded on audio- and videotape, which employees may borrow from the Research Library, Bldg. 477.

**In Memoriam**

**Nancy Sautkulis**, a technical secretary in the Chemistry Department, died on August 21 of acute lymphoblastic leukemia. She was 40.



**Nancy Sautkulis**

After earning an associate's degree from Concordia College, Sautkulis came to BNL in July 1976, as a secretary in the Biology Department, where she stayed for several years. In 1980, she transferred to Chemistry to work for Alfred Wolf.

She was promoted to a senior secretary in 1981. Following the birth of her son Michael, Sautkulis began working evenings, and then days, part-time for the department's administrative office, continuing after the birth of her daughter Margaret. In Chemistry, she oversaw the department library, prepared manuscripts and other scientific documents, and was responsible for establishing Chemistry's publications database.

Said Chemistry Chair Carol Creutz, "Nancy loved the challenge of adapting new computer-based tools to her work, and she truly excelled in this work, on which our department continues to rely. We were very fortunate to have even the part-time assistance of someone of her technical talents and extraordinary personal qualities. We miss her greatly."

Added former department chair Norman Sutin, "During my chairmanship I came to know and respect Nancy. Her intelligence and dedication pervaded all she undertook, including serving as the department's representative for Blood Drives, United Way campaigns and many other committees. She took pride in her work and in her family, and she was seldom satis-

fied with less than her best even when it could no longer have been easy for her to do so. We feel a deep sense of loss but derive inspiration from her life."

Sautkulis was made a secretarial specialist in October 1990, then a technical secretary in May 1992, still working part-time. On July 5 of this year, she went on long-term disability.

Nancy Sautkulis is survived by her husband Richard, of the Biology Department, her children, her parents and a sister.

**Richard Melucci**

(cont'd.)

more than 200 accounts and 75 funding sources make its administration a microcosm of BNL as a whole.

"DAS is a very diverse department, which gives me a head start," Melucci explained. "But there's still a lot to learn about the inner workings of the Lab, and other departments and divisions. My intention is to talk to as many people and learn as quickly as I can."

"The Budget Office has a history of accuracy, and I'd like to see that continued and improved," Melucci continued. "But I'd also like to improve its efficiency and its relationship with its customers."

One way to do this, Melucci continued, is to keep the emphasis on automating the budgeting process more fully, making the exchange of organizational budget drafts and final budgets entirely electronic. "I really want to improve the flow of information in both directions," he said, explaining that the development of such a budget system precedes his arrival in Budget.

Melucci became known for implementing such computerized administrative systems during his DAS career, a specialty that helped earn him one of the first Brookhaven Awards in 1991. He also chairs the Labor Cost Distribution Committee, which is implementing a new computerized system to account for and distribute employee hours and leave time.

**Software Demo**

On Friday, September 15, at 2 p.m., representatives of Doug Marks Associates and ACCEL Technologies will present an overview of P-CAD version 8.5 and Tango version 3, including a discussion of how these two products will migrate into the 1996 release of Sequoia. The demonstration will be held in the seminar room of Bldg. 515. For more information, contact Pam Mansfield, Ext. 7286, or send e-mail to pam1@bnl.gov.

During his first months as Budget Officer, Melucci will be heavily involved in evaluating the costs included in the various overhead pools and determining if they should continue to be distributed over their current base, or if a new base would be more appropriate. In all, the review's goal is to improve the methods of distributing overhead costs.

In order to gain acceptance for these improvements, Melucci expects to spend a considerable amount of time talking to BNLers throughout the Lab, and developing models to present to management.

"I look forward to a good working relationship with Lab employees in order to identify and implement desired improvements," he said.

— Kara Villamil

**ReportSmith Chosen For Database Access**

BNL's Information Interface Tool (IIT) Committee has chosen the computer program ReportSmith by Borland as an affordable, Labwide report writer/query tool to allow end users unassisted access to data contained on the various databases supported at the Lab. All are invited to preview this product on Wednesday, September 13, at 10 a.m., in the Computing & Communications Division (CCD) Seminar Room, Bldg. 515.

Consisting of Carol Archer, Department of Applied Science; Ray Duffield, Management Information Systems (MIS) Division; Susan Eng Wong, CCD; Chairperson George Malcolm, MIS; Richard Melucci, Budget Office; Pat O'Connor, CCD; and Betsy Schwartz, Information Services Division, the IIT Committee considered over 40 products before choosing ReportSmith.

Says Malcolm, "ReportSmith provides an easy-to-use means of accessing and reporting data, whether those data are located on your PC, a UNIX system, one of MIS's HP systems or almost anywhere else at BNL accessible via the network. Although, at present, it will run only in the Windows environment on personal computers, its connectivity to the widest variety of additional sources seems to set it above the other products evaluated."

In addition to intuitive and quick connectivity, the committee found ReportSmith to have several other strong points, including: an interface featuring a "what you see is what you get" report-writing screen; "quick" or "auto" report creating for four basic report types; and the fact that simple English sentences can be used to describe query choices so that knowledge of SQL language is not required.

**Women's Committee Seeks Volunteers**

Three new members must be selected for the Women's Program Advisory Committee for the coming fiscal year. Anyone interested in being considered to fill a two-year term on this committee may call Women's Program Coordinator Victoria McLane, Ext. 5099.

**Windows '95 Seminar**

The Personal Computer Resource Center in the Computing & Communications Division (CCD) has scheduled a seminar on the "Pros and Cons of Windows '95." The seminar will be held first on Friday, September 15, then will be repeated on Friday, September 29. Both sessions will begin at 10 a.m., in the CCD seminar room; seating is limited, so come early.

If interest warrants, the seminar will also be scheduled for October.

For more information, call Pat O'Connor, Ext. 7341.

**C++ Training**

There are still a few openings in the C++ programming class scheduled for September 18-22, from 8:45 a.m. to 4 p.m., in the seminar room of Bldg. 515. The fee for this class is \$500. To register or for more information, contact Ed McFadden, Ext. 4188, or e-mail mcfadde1@bnl.gov; or Pam Mansfield, Ext. 7286, or e-mail pam1@bnl.gov, by September 13.

**Added Addresses**

- Relativistic Heavy Iron Collider
- Ms. Patricia Brookhaven
- City of Upton, City Hall



## Indian Dancers To Perform Saturday

Tickets are still available for the performance by the Battery Dance Company tomorrow, September 9, at 7:30 p.m. in Berkner Hall. Sponsored by BERA's Indo-American Association, the new production, "Purush — Expressions of Man," will feature five of India's most renowned male dancers.

Buy tickets today for \$10 for adults and \$5 for children, at the BERA Sales Office or from Anand Saxena, Ext. 4844; Ramesh Gupta, Ext. 4805; Animesh Jain, Ext. 7329; or Anant Moorthy, Ext. 7582. At the door, tickets are \$12 for adults, \$5 for children.

## C/W Dance Lessons

The next eight weeks of lessons sponsored by the BERA Country/Western (C/W) Dance Club will be held on Tuesdays, beginning on September 12, in the North Room of the Brookhaven Center. Taught by Judy Cutler, the intermediate class will be held 5:30-6:30 p.m., while the beginner class will be offered at 6:30-7:30 p.m. The cost of each eight-week class is \$35 per person, payable in checks made out to the BERA Country/Western Dance Club.

There was insufficient interest in holding a couples class now, so, depending upon demand, it may be re-scheduled in the near future.

For more information and to register, call Marilyn Johnson, Ext. 2546.

## Bridge Club

The BERA Bridge Club announces its fall duplicate bridge schedule: Games will be held the following Wednesday evenings at 7:30 p.m.: September 13 & 27; October 11 & 25; and November 8, 15 & 29. All games will be held in the South Dining Room of the Brookhaven Center, except for September 27, which will be held in the Recreation Building.

For more information, call Morris Strongson, Ext. 4192.

## Tennis Anyone?

Whoever said that there is no such thing as a free lunch? Well, the Tennis Committee will prove that person wrong at the tennis courts at noon on Tuesday, September 12.

There and then, the 1995 tennis tournament winners will be presented with their awards, and, following that ceremony, lunch will be served — free — to all tournament players, tennis-ladder participants and their fans. The rain date is Wednesday, September 13.

## Rifle & Pistol Club

The Rifle & Pistol Club meets on the second Wednesday of each month, so the next scheduled meeting is September 13, in Room 202, Bldg. 911B, at noon. For more information, call Otto Jacobi, Ext. 3471.

## Pianist Jacques Després Opens 1995-96 BERA Concert Series

Highly acclaimed pianist Jacques Després will begin the 1995-96 BERA concert series on Sunday, September 17. The program will be held in Berkner Hall at 4 p.m.

At this concert, Després will discuss and play Modest Musorgsky's *Pictures at an Exhibition*. Originally titled *Hartmann*, this work was inspired by the posthumous exhibit of artworks by Victor Hartmann, a dear friend of Musorgsky. Reproductions of the paintings will be on display in Berkner Hall lobby, and slides of Hartmann's work will be shown as Després plays.

This year's BERA concert series also features the internationally renowned Amati Quartet, performing music by Mozart, Schubert and Szymanowski in a concert scheduled for Wednesday, April 24 at 8 p.m.

Jacques Després is the musical director of Summer Serenades, a four-week, lecture-concert series at the State University of New York (SUNY) at Stony Brook's Staller Center. He earned his master's degree from the

Juilliard School of Music and recently completed his doctorate at SUNY at Stony Brook.

Over the last decade, Després has delighted audiences in his native Canada, the U.S. and Europe with unique interpretations of a broad range of composers.

Després' prestigious awards include: The Frank Kopp Memorial Prize at the International Piano Competition, University of Maryland; First Prize, Montreal Symphony Orchestra competition; Musical Academy of Quebec "Prix d'Europe" competition; and the doctoral concerto competition at SUNY Stony Brook.

Tickets for the Jacques Després and Amati Quartet concerts are \$14 for adults, and \$9 for students and seniors, for each performance.

Four special concerts will also be offered as part of the series, featuring promising young performers who study music at SUNY at Stony Brook. These special concerts will be held at 8 p.m. on the Tuesday evenings of October 24, November 21, February 13 and



Jacques Després

March 19, and the suggested donation is \$6 for each performance.

All of the concerts will be held in Berkner Hall, and tickets for any concert can be purchased at the door. For the Jacques Després and Amati Quartet concerts, tickets may also be purchased in advance from M. Kay Dellimore, Bldg. 185, Ext. 2873.

## Lottery for Carpoolers

Because carpooling helps the environment and saves money and hassles, it really is its own reward. Even so, BNL's Employee Commute Options (ECO) program's Commuter Assistance & Information Service (CAIS) is offering a few more rewards to some of the employees who register their carpool with the CAIS — U.S. savings bonds with maturity values ranging from \$50 to \$1,000.

The lottery will be held on September 13, and there will be 20 lucky car or van pooler winners.

If you have already registered your carpool with the CAIS, your entry is automatic. But, if you haven't let the office know that you share a ride even once a week, remembering that your spouse or roommate qualifies as a ride-sharer, then call Ext. 2446 to register over the phone.

For more information on starting or joining a car or van pool, or on the other benefits of sharing a ride, such as free defensive-driving classes, call or stop by the office in Bldg. 129T.



## Toastmasters Club To Offer Workshop

Beginning Tuesday, September 12, and continuing for seven sessions on the second and fourth Tuesdays of each month, the Toastmasters Club will be offering a workshop on effective oral communication. Meeting from 5:30 to 7 p.m. in the large conference room of Bldg. 475, participants will be asked to give and hear short impromptu and prepared talks, to develop their listening, evaluating and presenting skills. The last session will be on December 12.

The workshop is open to adult BERA members, their families and friends. A \$10 per person fee is required to cover the cost of materials and refreshments. For more information about the workshop or Toastmasters, call Beth Lin, Ext. 3372, or Margaret Foster, 473-9129.

## Atlantic City Trip

The next BERA-sponsored, one-day trip to Atlantic City will be to Trump Castle Hotel and Casino on the marina, on Saturday, September 23. The initial cost will be \$22, but the hotel-casino will give a \$10 coin return.

The bus will leave the Brookhaven Center at 8 a.m., with an extra pickup at LIE Exit 63, if requested. After a seven-hour stay in Atlantic City, return will be about 11 p.m.

Buy tickets now at the BERA Sales Office in Berkner Hall, weekdays, 9 a.m. to 1:30 p.m. For more information, call Andrea Dehler, Ext. 3347, or Kay Dellimore, Ext. 2873.

## Let's Dance

### Care to Cha-Cha and Fox Trot?

Beginners are invited to learn to cha-cha and fox trot, in lessons sponsored by the BNL Ballroom, Latin & Swing Dance Club. Starting September 13, for eight Wednesdays from 6:30 to 7:30 p.m. in the North Ballroom of the Brookhaven Center, beginners' cha-cha and fox trot classes will be taught by Giny Rae and Peter Scieurca, former Empire State Ballroom Champions. If a minimum of 40 people sign up for the class, then the per person cost is \$25.

During this dance-school year, the cha-cha and fox trot will be taught in series through the advanced level, so here is your chance to become proficient in two very popular dances.

September 13 also marks the start of two other classes in this series: at 5:30 p.m., beginners' Argentine tango and paso doble; at 7:30 p.m., intermediate lindy and six-count swing.

BNL employees, retirees and on-site contractors, and their families and friends are invited to sign up. To register or for more information, contact: Marsha Belford, club president, Ext. 5053; or Rudy Alforque, vice president, Ext. 4733.

### Be Social Soon

The next Saturday Social sponsored by the Dance Club will be held on Saturday, September 23, from 8 p.m. to midnight in the North Ballroom of the Brookhaven Center. All are invited. The suggested contribution is \$1 per person, which goes into the club's music fund. For more information, contact John Millener, Ext. 3853.

## Softball Party

The end-of-the-year Softball Party will be held on Friday, September 22, beginning at 5:30 p.m., at the Rock Hill Country Club, in Manorville. The cost of \$15 per person includes a buffet and music. A cash bar will be available. For tickets, contact your captain or league representative by Friday, September 15.

## Weight Watchers

Registration for the next on-site Weight Watchers series will be held on Wednesday, September 13, from noon to 1 p.m. in the South Dining Room of the Brookhaven Center. Depending upon the number of registrants, the fee will be \$89 for eight or ten weeks. For more information, call Health Promotion Specialist Mary Wood, Ext. 5923.

## Water Aerobics

Water aerobics classes will be held at the Lab pool, at 5:20 p.m., on Tuesdays and Thursdays this fall, sponsored by the Health Promotion Program of the Occupational Medicine Division. The first classes will be on September 19 & 21.

The classes are free, but participants must pay the pool fee of \$2 a session or show their season pool pass.

Employees and their spouses may sign up for one or both classes by calling Mary Wood, Ext. 5923.

## Cafeteria Menu

### Monday, September 11

Soup: Black bean & cilantro .90/1.20  
A la Carte: Turkey à la king 3.85  
Lite: Baked flounder julienne 3.95  
Deli: Roast turkey w/stuffing 3.20  
Grill: Swordfish teriyaki 3.30

### Tuesday, September 12

Soup: Cream of broccoli .90/1.20  
A la Carte: Meatloaf w/mushroom sauce 3.85  
Lite: Chicken w/cranberry glaze 3.95  
Deli: Roast pork loin 3.20  
Grill: Western omelet 3.30

### Wednesday, September 13

Soup: Chicken gumbo .90/1.20  
Display Cooking: Cajun foods 4.75  
Deli: Roast beef w/mashed potatoes 3.20  
Grill: Spicy wings w/bleu cheese 3.30

### Thursday, September 14

Soup: Country vegetable .90/1.20  
A la Carte: Ham w/redeye gravy 3.95  
Lite: Baked cod w/peach-pepper sauce 3.95  
Deli: Corned beef w/boiled potatoes 3.20  
Grill: Tex-Mex taco bar 3.30

### Friday, September 15

Soup: Manhattan clam chowder .90/1.20  
A la Carte: Stir-fry beef 3.95  
Lite: Stir-fry chicken 3.95  
Deli: Ham w/beans 3.20  
Grill: Tuna melt 3.30

## BROOKHAVEN BULLETIN

Published weekly by the Public Affairs Office for the employees of

BROOKHAVEN NATIONAL LABORATORY

ANITA COHEN, Editor  
MARSHA BELFORD, Assistant Editor

Bldg. 134, P.O. Box 5000  
Upton NY 11973-5000  
Tel. (516) 282-2345; Fax (516) 282-3368

The Brookhaven Bulletin is printed on paper containing at least 50 percent recycled materials, with 10 percent post-consumer waste. It can be recycled.



