



Stephen Dewey Thomas Butcher John Dunn

Roger Stoulenburgh CMT-18341

BNL Wins Three DOE Energy 100 Awards

DOE has recognized BNL with three Energy 100 Awards for scientific and technological achievements produced during the department's 23-year history, 1977-2000.

The awards recognize outstanding work by DOE laboratory scientists who have contributed to society by helping consumers save money and improve their quality of life. The three areas of BNL research that were recognized are:

- invention of the flame quality indicator, a device that measures flame brightness in oil burners
- studies of drug addiction and drug action using an imaging technique called positron emission tomography (PET)
- Lyme disease prevention and diagnosis.

A panel composed of members of the American public — including nonprofit community, science and engineering experts, labor leaders, and academics — selected the awardees. To see the complete list of the 100 discoveries and innovations that won Energy 100 awards, go to the DOE Web site at www.ma.doe.gov/energy100/list.html.

Thomas Butcher

Thomas Butcher, Energy Sciences & Technology Department, spearheaded the invention of the flame quality indicator, a device that is designed to alert the homeowner when oil-burner service is required weeks before the burner's primary control would normally shut down the system due to severe flame-quality problems. Thus, problems can be corrected before they escalate and before the heat or

hot-water supply is disrupted. Currently, Honeywell Corporation and Insight Technologies are performing a 100-unit field study of an improved version of the DOE-patented device that was originally developed at BNL about a decade ago.

Stephen Dewey

Stephen Dewey, Chemistry Department, and his collaborators used PET scans to show how several compounds used to treat epilepsy, including gamma vinyl-GABA, or GVG, block the biochemical and behavioral effects of cocaine, nicotine, heroin, alcohol, and methamphetamine in the brains of primates. This unique therapeutic strategy recently was awarded a U.S. patent and may result in a new approach for treating addiction. To show whether or not these compounds exhibit the same effect in humans, clinical trials will have to be conducted.

John Dunn

In humans and animals, Lyme disease is the result of the inoculation with the bacterium *Borella burgdorferi* which is carried by the deer tick. John Dunn, Biology Department, and his collaborators have pinpointed the protective region of the bacterium's surface protein, which is being engineered to make a more effective second-generation vaccine. In addition, BNL research on other Lyme disease proteins has produced a rapid, highly accurate diagnostic test for Lyme disease. This test was recently granted FDA approval. — Diane Greenberg

'Speed' Causes Brain Damage

Two new BNL studies show that abuse of methamphetamine — the drug commonly known as "speed" — is associated with neurological effects that remain evident even for abusers who have not taken the drug for a year or more. The studies also found that methamphetamine abusers have reduced cognitive and motor functions, even at one year after quitting the drug.

The findings appear in the March issue of the *American Journal of Psychiatry*, authored by lead investigator Nora Volkow, BNL; with Linda Chang, then of the University of California, Los Angeles (UCLA) now BNL; Gene-Jack Wang, BNL; Joanna Fowler, BNL; Maria Leonido-Yee, UCLA; Dinko Franceschi, BNL;

methamphetamine at dose levels taken by human abusers leads to dopamine transporter reduction," said Volkow, who is also Associate Laboratory Director, Life Sciences. Dopam-

"These changes are much greater than what we have seen with heroin, alcohol, or cocaine."

ine transporters help transport "used" dopamine, a neurotransmitter that contributes to feelings of satisfaction and pleasure, back into the nerve cells that produce it, thus terminating the pleasure signal.

"For the first time we can also see that this transporter reduction is associated with motor and cognitive impairment," Volkow said. Previously, in animal studies and two small human studies, researchers documented reductions in dopamine transporters. Past studies did not test whether these reductions were associated with changes in cognitive and motor function.

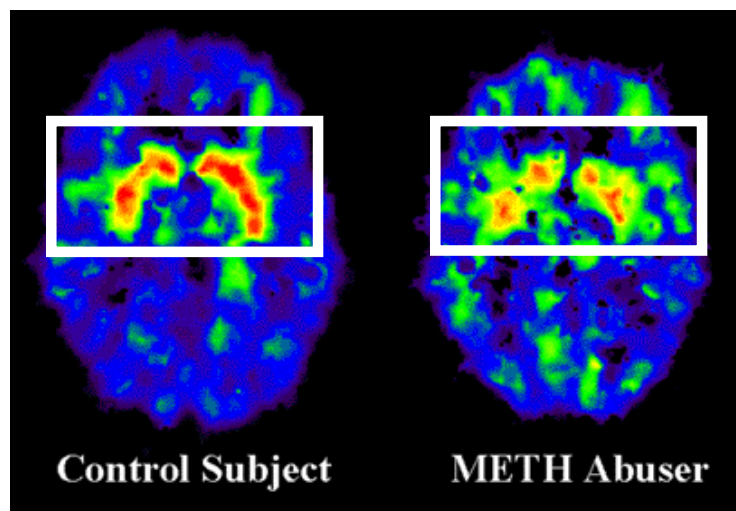
"We also have the first evidence that methamphetamine affects circuits of the brain other than those regulated by dopamine, and that the drug

(continued on page 2)

"This is objective evidence that methamphetamine is damaging to the brain."

Mark Sedler, Stony Brook University; John Gatley, BNL; Robert Hitzemann, BNL; Yu-Shin Ding, BNL; Jean Logan, BNL; Christopher Wong, BNL; and Eric Miller, UCLA.

"These studies provide some of the first clear evidence that



In the boxed areas of these brain scans of a control subject and a methamphetamine (meth) abuser, the red areas within the kidney-shaped structures (actually, the striatal region of the brain) show the presence of dopamine transporters. The meth abuser's scan shows less red in this area, denoting fewer dopamine transporters.

Making the Case for Science — Bond Speaks on Science Funding

When the Brookhaven Organization of Scientists (BOS) and the Friends of Brookhaven (FOB) decided to cosponsor a talk on the science-budget process by Peter Bond, BNL's former Interim Director, who recently spent a year in Washington at the Office of Science & Technology Policy, they were not sure what kind of a turnout to expect. But when budgets are tight, and getting tighter, the topic gets attention.

"Everyone needs money," said someone in the standing-room-only crowd that filled Room B at Berkner Hall as Bond,

a senior scientist and Special Assistant to the Director, prepared to speak at noon on March 15.

Bond described "a very disturbing trend" in government funding of research and development (R&D): Since the 1970s, while R&D funding in the life sciences has increased, funding for all other fields has remained flat or decreased. "If this trend continues, the coun-



Peter Bond

Roger Stoulenburgh DZ20196

try will be in serious trouble," Bond said, because "the basic research done here and elsewhere benefits other fields, including life sciences, and helps drive the economy."

The funding problem is particularly complex for scientists sponsored by DOE, which gets its R&D money from two different appropriations bills. Additionally, there is confusion, Bond says, about the mixed mission of DOE, which encompasses weapons research and environmental cleanup in addition to work sponsored by the Office of Science. Furthermore, early signs from Presi-

dent George W. Bush's administration, including his preliminary budget and the lack of both a presidential science advisor and an Office of Science director, indicate that non-health-related research is not now a priority, Bond says.

So what can Brookhaven scientists do? "Become more aware and involved," Bond says. His suggestions:

- Get more information about the budget process and key players. For links to good sources on the web, go to: http://home.bnl.gov/funding/sci_funding.html.

(continued on page 2)

Calendar
of Laboratory Events

- The BERA Sales Office is located in Berkner Hall and is open weekdays from 9 a.m. to 3 p.m. For more information on BERA events, contact Andrea Dehler, Ext. 3347; or M. Kay Dellimore, Ext. 2873.
- Additional information for Hospitality Committee events can be found at the Lollipop House and the laundry in the apartment area.
- The Recreation Building is located in the apartment area.
- Calendar events flagged with an asterisk (*) have an accompanying story in this week's Bulletin.

— EACH WEEK —

Tuesdays: Welcome Coffee
10-11:30 a.m. Recreation Bldg. Newcomers meet friends. Mimi Luccio, 821-1435
— Hospitality event

Wednesdays: On-Site Play Group
9:30 a.m.-11:30 a.m. Recreation Bldg. Parents meet while children play. Free, drop in any time. Monique de la Bey, 399-7656. — Hospitality event.

Wednesdays: beg.-adv. Dance Lessons
6-9 p.m., Brookhaven Ctr. North Ballroom. Marsha Bedford, Ext. 5053.

Wednesdays: Yoga Practice Sessions
12:10-12:50 p.m., Recreation Bldg., free. For more information, contact Ila Campbell, Ext. 2206.

Tues. & Thurs: Aerobic Dance
5:15 p.m., Recreation Bldg. \$4 per class or \$35 for any ten classes. Pat Flood, Ext. 7886; or Susan Monteleone, Ext. 7235.

Mon., Tues., & Thurs: Kickboxing
noon-1 p.m., Mon. & Thurs. and 5:15-6:15 p.m., Tues. & Thurs. Mary Wood, Ext. 5923, or wood2@bnl.gov.

— TODAY —
Friday, 3/23

Women Engineers' Lunch Networking Meeting
Noon, Berkner Hall, Room A. Contact Arlene Zhang, Ext. 5369.

— THISWEEKEND —
Saturday, 3/24

BERA IAA Festival of Colors
3:30 p.m., Berkner Hall. \$4 per person. Join BERA's Indo-American Association in celebrating the Festival of Colors and the Indian new year. Snacks will be served from 3:30 to 4 p.m. Cultural program by local artists will begin at 4 p.m. Pizza will be served at 7 p.m. in the Recreation Center. For more information, contact Kumi Pandya, Ext. 7734; Srini Iyer, Ext. 7655; or A.M. Topé, Ext. 5672.

— NEXT WEEK —
Monday, 3/26

***IBEW Meeting**
6 p.m., Knights of Columbus Hall, Patchogue. A meeting for shift workers will be held at 3 p.m. at the union office. The agenda includes regular business, committee reports, and the president's report.

How Much Stress Can They Take?



BNL photographer Joseph Rubino creates his impression of the spectators' tension as a bridge is crushed by a stress-tester. Above, right, is a Rubino's-eye-view of three of the winning bridge-builders.



(Above) At the 2001 BNL Model Bridge Contest, it was Patchogue-Medford High School's Matthew Franco (left) and Edward Tremblay (center) who, respectively, took first-place and third-place honors, while Longwood Junior High School student Kurt Speilmann (right) won the aesthetic award for the bridge judged most attractive. Not shown are: Aiah Wider, second-place winner; and Yanka Li, whose bridge took fourth place. (CN3-44-01)

After 300 student-built model bridges were stress-tested to breaking point during the 2001 BNL Model Bridge Contest on Saturday, March 3, students from Patchogue-Medford High School discovered that they had won four top places, becoming the engineering whiz kids of the day. The aesthetic award winner is a student at Longwood Junior High School.

The 300 high-school students in the contest were drawn from 24 schools in Suffolk County. Their goal was to build the lightest bridge that supports the most weight. Franco's winning bridge weighed in at 17.7 grams and withstood more than 2,700 times its own weight before it broke under the pressure of the stress tester.

The top three winners received gift certificates in the amounts of \$100, \$75 and \$50, and the aesthetic bridge winner received a \$25 gift certificate, courtesy of BSA. BSA will also send the top two winners to Chicago in April, to enter the 2001 International Bridge Building Contest.

The contest was organized and run by the Office of Educational Programs. BNL volunteers who tested the bridges under a stress tester include: James Cullen, Collider-Accelerator Department (CAD); Carl Klamut, BNL retiree, Energy Sciences & Technology Department (ES&T); William McGahern, CAD; Robert Sabatini, ES&T; and Martin Woodle, National Synchrotron Light Source Department.

— Diane Greenberg

Volunteers Needed

Healthy, English-speaking males and females between 18 and 50 years of age who do not use illicit drugs are needed to volunteer for magnetic resonance imaging (MRI) studies. All participants will be compensated for their time. Contact Megan Gaiefsky, Ext. 5953, or Trish Spoto, Ext. 2773.

Arrivals & Departures

Arrivals	
Dana Carasig	Medical
Zhipeng Chang	Chemistry
Stephen G. Ferrone ...	Env. Services
Jerome Lauret	Physics
Departures	
Noel D. Blackburn	Env. Rest.
Kaori Kobayashi	Chemistry
Jonathan G. Sailer	Inform. Tech
Gwyn P. Williams	NSLS

Science Funding



- Interact with elected officials to establish positive relationships. This can include attending town meetings, writing to representatives, or visiting their offices when you are in Washington. "They may not be able to read every letter," Bond says, "but letters are counted, and every visitor is logged." Bond stressed that letters should *not* be written by scientists as representatives of BNL, as the Lab is not allowed to lobby Congress directly on behalf of its own programs. As private citizens, however, individual scientists *can* express their views about science funding in general and/or excitement about their own research.

(cont'd.)

But if you're out to pitch your own pet project or complain about small cuts to your program, it probably won't be effective — in fact, it could be counterproductive. Similarly, pitting one area of science against another won't work to benefit science as a whole. "We need to act as a community to make the argument that balance in funding among the sciences is vital for the future of science and the nation," Bond says. Keep in mind that life in Congress is hectic. Representatives won't read long documents or listen to overly complex presentations. "Make your case crisp and clear," Bond says. "You have to convey your enthusiasm and the point of your research *without* the details — in a few words or a half page." A tip from the Media & Communications Office: Try out your letter or presentation with your mother-in-law, your kids, or someone not at all involved with science. You'll quickly know whether you're reaching your audience — or losing your case. — Karen McNulty Walsh

Scharff-Goldhaber Prize, April 2

The Gertrude Scharff-Goldhaber Prize, a \$1,000 award given annually, was established to recognize substantial promise and accomplishment by a woman graduate student in physics.

Administered by Brookhaven Women in Science (BWIS), the prize honors the outstanding contributions of the late nuclear physicist Gertrude Scharff-Goldhaber, who in 1950 became the first woman Ph.D. physicist appointed to the BNL staff and later became a founding member of BWIS.

This year's Gertrude Scharff-Goldhaber Prizes will be awarded by BNL Distinguished Scientist Maurice Goldhaber to three Ph.D. candidates, who will make brief presentations of their work on Monday, April 2, starting at 3:30 p.m., in the Large Seminar Room of the Physics Department, Bldg. 510.

- The winners are:
- Rebecca Christianson, a student at Massachusetts Institute of Technology who is conducting her research at the National Synchrotron Light Source and who will talk on "X-ray Scattering Studies of the High Field Incommensurate State in Cu_{1-x}MgxGeO₃;"
 - Jane Burward-Hoy, Stony Brook University (SBU), whose poster session will be on "Using PHENIX to identify hadrons produced in 'Little Big Bangs' at RHIC;" and
 - Irina Mocioui, SBU, who will give a paper on "Phenomenology of Neutrino Oscillations."

Refreshments will follow the presentation, and all are invited to attend. For more information, contact Pam Mansfield, Ext. 7286.

'Speed' Causes Brain Damage

(cont'd.)

causes changes consistent with inflammation throughout the brain," Volkow continued. "This is objective evidence that methamphetamine is damaging to the brain. These changes are much greater than what we have seen with heroin, alcohol, or cocaine," she said. Volkow emphasizes the need for further study to assess whether these changes are long-lasting and result in long-term impairment of memory

and motor functions. She specifically suggests that methamphetamine abusers be watched over time by their physicians for possible signs of Parkinson's disease, a severe movement disorder that results from a loss of dopamine in the brain. For a more detailed account of this research, go to: <http://www.bnl.gov/bnlweb/pubaf/pr/bnlpr030101.htm>. — Karen McNulty Walsh

William Floyd Students Win Medals For Robot Built With Help From BNL



Roger Stoutenburgh CN2-95-01

A team of students from William Floyd High School (WFHS) has won both a silver medal for being a member of the runner-up alliance and a medal for having the best team spirit in the recent Long Island Regional Robotics Competition held at Suffolk County Community College. Fourteen engineering and fabrication staff members from BNL helped the team members build their robot for the contest, which was sponsored by FIRST, For Inspiration and Recognition of Science and Technology, a nonprofit organization based in New Hampshire.

Thirty-three teams from Long Island schools participated in the local competition, one of fifteen held throughout the nation. Earlier this year, the William Floyd team competed in a regional contest in Hartford, Connecticut, where they placed in the top third, competing against 53 teams. They also entered a regional competition held in Philadelphia, Pennsylvania, from March 22 through 24.

WFHS teachers and students gathered with BNL employees at BNL when Computer Associates (CA) donated a \$5,000 check to William Floyd School District (WFSD) to help underwrite the

cost of the contest. Photographed in the center row are three William Floyd robotics team officers: Hamerton Jeanty, president, who is holding the robot and one of the balls that it lifts into a seven-foot-high cage (not shown); Beth Marie Henninger, secretary, seated center under the check; and Gregory Lombardo, vice president, standing, right. Holding an enlarged replica of the check for \$5,000 are: (from left) William Guiducci, WFSD; Lisa Platania, CA; and Richard Spellman, Division Manager of BNL's Central Shops Division (CSD), who headed BNL's effort to build the robot with BNL staff and WFHS teachers and students.

Other BNL staff who helped to build the robot are: Scott Coburn, Physics Department; William Ducoing, CSD; Alfred Farland, CSD; Jack Fried, Instrumentation Division (ID); George Mahler, Collider-Accelerator Department; Christopher Manning, CSD; Giuseppe Mondi, CSD; Paul O'Connor, ID; Michael Palumbo, CSD; Nikolaos Simos, Energy Sciences & Technology Department; William Struble, CSD; Fred Wahlert, CSD; and John Wilson, CSD.

— Diane Greenberg

In Memoriam

Helen Kondratuk, who had joined the Biology Department as a secretary B on 6/5/1951, died on 4/13/2000 at age 74. She had left 1953-55, but served BNL for 47 years, retiring as a staff specialist on 12/31/90.

William Neal, who died on 4/21/2000 at the age of 76, had arrived at BNL on 3/12/1962 as a janitor. Promoted to technician in the Photography & Graphic Arts Division, he had left the Lab on 4/20/1973.

Wesley Howell, who on 5/19/1947 had become a carpenter in what is now the Plant Engineering Division and had retired as a carpenter group leader after 35 years at BNL, died on 5/5/2000. He was 82.

Marie Reynolds, who had retired from what is now the Procurement & Property Management Division on 10/22/1976, died on 6/20/2000 at the age of 86. She had joined the then Plant Maintenance Division on 5/6/1963 as a clerk A.

Robert Foukal, a senior designer in the Collider-Accelerator Department 1992-98, died on 7/2/2000 at 74 years of age. He had first joined BNL 1966-71, returning during 1983-86 and 1988-90 as a guest and contract laborer.

BWIS Offers Scholarship For Women Science Students

Applications are now being accepted for the Renate W. Chasman Scholarship for Women. This scholarship was established in 1986 to encourage women who have taken a break from formal education to resume their studies in natural sciences, engineering, or mathematics.

The winner will receive a one-time award of \$2,000 from BNL's Brookhaven Women in Science (BWIS), a not-for-profit organization whose aim is to promote the advancement of women.

Candidates for the scholarship must be U.S. citizens or resident aliens who live in Nassau or Suffolk County, or the boroughs of Brooklyn or Queens. They must be currently enrolled in or have applied for a degree program at an accredited institution. Their program of study for 2001-2002 must be either at the junior or senior undergraduate level or at the first-year graduate level, to be pursued on a half-time or greater basis.

The winner will be chosen by a committee of Brookhaven Lab scientists. The award will be made directly to the recipient, who will be expected to complete at least two consecutive school terms in good academic standing.

Application forms and further information can be obtained by writing to: Chasman Scholarship Fund, P. O. Box 183, Upton, NY 11973. The deadline for applications is May 1, 2001. The award will be presented in July.

The Renate W. Chasman Scholarship Fund is supported by fund-raising events and tax-deductible contributions from individuals and organizations. Renate W. Chasman (1932-1977) was a noted physicist at the Lab. Her work influenced the design of particle accelerators around the world, including BNL's National Synchrotron Light Source.

Safety Glasses Open Half Day

On Wednesday, March 28, the BNL Safety Glasses office will only be open from 9 a.m. to noon.

IBEW Meeting

Local 2230, IBEW, will hold its regular monthly meeting on Monday, March 26, at 6 p.m. in the Knights of Columbus Hall, Patchogue.

A meeting for shift workers will be held at 3 p.m. at the union office. The agenda includes regular business, committee reports, and the president's reports.

Training Program Moves Office

As of April 1, training and challenge exams offered by the Training & Qualifications Program Office will be moved from Building 129 to the classroom on the main floor of Building 703.

To check the date, time and location of a course, go to the Training Web site at <http://training.bnl.gov> or speak to your department/division training coordinator.

Calendar

(continued)

Tuesday, 3/27

EAP Lecture

noon-1 p.m., Berkner Hall
Psychologist Barbara Fontana will present "Where Did Our Love Go, Part II: Communication Skills for Couples." For more information, contact Dianne Polowczyk, Ext. 4567.

Wed. & Thurs., 3/28-29

BERA Book Fair

10 a.m.-3 p.m., Berkner Hall.
Discounted best-seller books will be on sale. Credit cards accepted.

Thursday, 3/29

BERA Radio Club Meeting

noon, Room D, Berkner Hall
Agenda includes planning for future Field Day activities. All BNLers are welcome. For more information, contact Chris Neuberger, Ext. 6062.

BERA Bridge Club

7 p.m., Berkner Hall cafeteria
For more information, contact Morris Strongson, Ext. 4192, mms@bnl.gov.

Daffodil Bouquets Arrive

Daffodil bouquets, purchased in advance to benefit the American Cancer Society, can be picked up in the BERA Sales Office.

Friday, 3/30

BERA Spring Fling

6 p.m., Rock Hill Country Club, Manorville, \$15 per person includes: hot buffet, DJ, and cash bar. Contact, Andrea Dehler, Ext. 3347, John McCaffrey, Ext. 2075; Louie Nieves, Ext. 4897; Laurie Pearl, Ext. 5520.

— WEEK OF 4/9 —

Thursday, 4/12

BERA Bridge Club

7 p.m., Berkner Hall cafeteria
For more information, contact Morris Strongson, Ext. 4192, mms@bnl.gov.

— WEEK OF 4/16 —

Wednesday, 4/18

Brookhaven Lecture

4 p.m., Berkner Hall.
Speaker and title to be announced.

Saturday, 4/22

Atlantic City Bus Trip

\$25 per person. Bus to Resorts Hotel/Casino leaves the Brookhaven Center at 8 a.m. and returns at 10:30 p.m. First-come first served, paid reservations can be made at the BERA Sales Office. For more information, contact: Andrea Dehler, Ext. 3347 or M. Kay Dellimore, Ext. 2873.

Note: This calendar is updated continuously and will appear in the Bulletin whenever space permits. Submissions must be received by the preceding Friday at noon to appear in the following week's Bulletin. Please enter the information for each event in the order listed above (date, event name, description, and cost) and send it to bulletin@bnl.gov. Write "Bulletin Calendar" in the subject line.



Roger Stoutenburgh photo

The scarlet tanager spotted on site by Roger Stoutenburgh last spring could soon be here again after wintering somewhere between Columbia and Western Amazonia. The male bird is flaming scarlet with black wings and tail, the female is olive green, and they are only rarely seen on Long Island, generally in shady areas near oak trees. Other spring birds to watch for include ospreys, robins, and redwing blackbirds.

Basketball scores from games on March 8

Hot Hoops

Titans 71 vs. Heavers 68

Troy Mayo	28 points	Seth Legrand	32 points
Steve Jao	26	Reggie Sanchez	18
Charlie Edwards	6	Hector Machado	9
Jim Rank	4	Jim Garrison	5
A. Walker	3	Sean Baugh	2
Chuck Karns	2	Mike Malardi	2
Rob Singleton	2		

Three-point shots: Jao (6), Mayo (6), Machado (3), Sanchez (3), Garrison, Legrand, Walker.

Chemically Imbalanced 82 vs. Bombers 59

Joel Carney	33 points	Brian Hobson	23 points
Jan Chaloupka	19	Nick Kling	15
Shane Stadier	10	Kevin Woodson	7
Steve Springston	9	Tracy Fountaine	6
Fred Maier	5	Mitch Williams	6
Chris Fockenberg	4	Rob Singleton	2
Todd Clatterbuck	2		

Three-point shots: Carney (7), Hobson (4), Chaloupka (2), Fockenberg, Kling, Maier.

Join BERA Events

For more information about these events, see the *Calendar of Laboratory Events on the inside*, visit the BERA Sales Office, or call Andrea Dehler, Ext. 3347.

Daffodil Sale
3/29



Book Fair
3/28 & 29



Spring Fling
3/30



Atlantic City Bus Trip
4/21



Manhattan Spirit Dinner Cruise
7/03



Scotch Doubles

Join in the Scotch Doubles Tournament to be held on Sunday, March 25, at 1:30 p.m. at the Port Jeff Bowl. The cost of \$38 per couple includes bowling, prizes, and buffet. The tournament is open to the BNL community.

Contact Debbie Keating, Bldg. 211, Ext. 3888, on weekdays, 8 a.m.-4:30 p.m., for information and applications. The application deadline is today, March 23.

Give Furniture, Videos For BNL Guest Services

Your donations of unwanted, gently used furniture and/or videos could be used by visiting families of guest researchers. If you can help, then send e-mail to adelwerth@bnl.gov. BNL dormitory visitors also greatly appreciate borrowing videos — if you have videos to donate to the Guest Services Program, then send them to Karen Adelwerth, Building 527. Call Adelwerth, Ext. 4262, for more information.



BERA Board Elections Next Week

Four candidates are running for two positions on the Executive Board of the Brookhaven Employees Recreations Association (BERA). The candidates are: Susan Cataldo, Medical Department; Charles Gardner, Collider-Accelerator Department; Peter Pohlot, Environmental Services Division; and JoAnn Reed, Procurement & Property Management Division. For more information on the candidates, see The Bulletin, March 16, 2001.

Voting will be held next week, March 26-30. All employees of BNL, BSA, and DOE, and employees of permanent, on-site contractors are BERA members — and urged to vote. Voting hours will be: Monday-Wednesday, March 26-28, 11:30 a.m.-1:30 p.m., at Berkner Hall; or Thursday-Friday, March 29-30, 10 a.m.-2 p.m., at the Teachers' Federal Credit Union.

Volleyball Standings, March 9

Mixed League 2

Nuts & Bolts	31 - 14
Spiked Jello	30 - 15
Upsetters	28 - 17
Group Sets	22 - 23
Wazups	17 - 28
Underdogs	7 - 38



Mixed League 3

Upton Ups	52 - 17
Net Workers	36 - 30
Net Setters	30 - 33
NWO	29 - 34

Open League A

Drilling & Excavation Co.	38 - 7
Shank, Carry, & Throw	29 -16
Far Side	12 - 33
Death Volley	11 - 34

Open League B

Dump & Dink	51 - 6
Easy Spikers	40 - 11
Late Entry	30 - 24
Setting Ducks	28 - 29
PHENIX Fire	25 - 29
Monday Night Live	24 - 33
Bumpin Ugliers	14 - 43
STAR	7 - 44

Classified Advertisements

Placement Notices

The Lab's placement policy is to select the best-qualified candidate for an available position. Candidates are considered in the following order: (1) present employees within the department/division and/or appropriate bargaining unit, with preference for those within the immediate work group; (2) present employees within the Laboratory; and (3) outside applicants. In keeping with the Affirmative Action Plan, selections are made without regard to age, race, color, religion, national origin, sex, disability or veteran status. Each week, the Human Resources Division lists new placement notices, first, so employees may request consideration for themselves, and, second, for open recruitment. Because of the priority policy stated above, each listing does not necessarily represent an opportunity for all people. Except when operational needs require otherwise, positions will be open for one week after publication. For more information, contact the Employment Manager, Ext. 2882; call the JOBLINE, Ext. 7744 (344-7744), for a list of all job openings; use a TDD system to access job information by calling (631) 344-6018; or access current job openings on the World Wide Web at www.bnl.gov/JOBS/jobs.html.

OPEN RECRUITMENT — Opportunities for Laboratory Employees and outside candidates.

MK9127. POSTDOCTORAL RESEARCH ASSOCIATE — Requires a Ph.D. in materials science, chemistry, or physics, expertise in magnetic characterization and limited synthesis of magnetic materials, and excellent oral and written communication skills. Experience in magnetic nanomaterials, thermal analyses and force microscopy, and characterization and analysis of soft magnetic materials is desirable. Research will involve a BNL-sponsored exploratory program to explore the potential of magnetic oxides and nanocomposites for magnetocaloric application. Collaboration with local university and industrial researchers is anticipated. Under the direction of L. Lewis. Environmental Sciences Department.

DD9142. REGISTERED NURSE POSITION — The PET imaging program requires a Registered Nurse to participate in imaging studies with radioactive tracers. The individual must be highly organized to work rapidly and accurately within a restricted time frame. Flexibility in work hours is required. Experience in phlebotomy, monitoring EKG, blood pressure and pulse, ordering supplies, lab work and record keeping necessary. Experience in critical care and a BS or BA degree is desired. Individual will act as a patient advocate and will assist in primate research studies. Medical Department.