

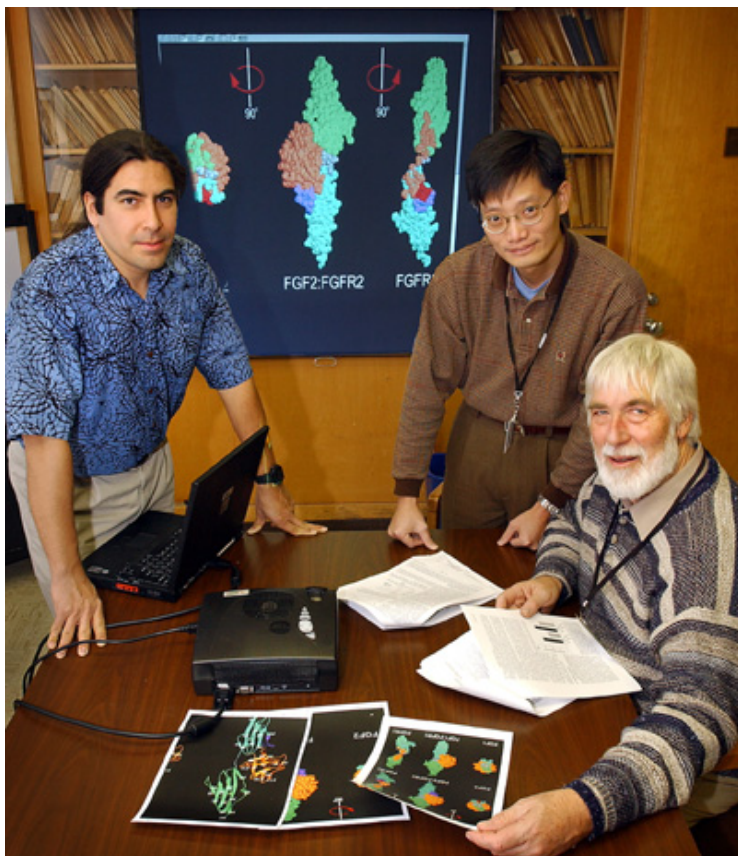
Medical's Novel Synthetic-Growth Factor Technology Licensed by BioSurface Engineering Technologies, Inc.

BioSurface Engineering Technologies,™ Inc. (BioSET), of College Park, Maryland, has obtained an exclusive, worldwide license for a novel growth factor technology developed by a BNL Medical Department team led by Louis Peña in collaboration with BioSET researchers.

The BNL-BioSET team made biologically active synthetic analogs of two growth factors, including basic fibroblast growth factor for use in wound healing and radiation protection, as well as in other applications. The National Institutes of Health and BioSET supported the research.

Fibroblast growth factor (FGF) refers to a family of proteins in the human body that are responsible for the proliferation, repair, and survival of cells in many tissues, including the brain, vascular system, and muscle. Basic FGF is used clinically in Japan to treat diabetic foot ulcers. It has also been evaluated in clinical trials in the U.S. for its ability to enhance neurological recovery after stroke and to minimize the effects of ischemia, or insufficient blood flow in the heart and circulatory system.

The new analogs developed at BNL are proteins that are



BNL researchers (from left): Louis Peña, Xinhua Lin, and John Glass, and BioSurface Engineering Technologies, Inc. scientist Paul Zamora (not in photo) have developed a group of synthetic analogs that completely mimic the action of natural fibroblast growth factor.

easier to produce than natural growth factors or growth factors derived by recombinant tech-

niques. BioSET has taken an exclusive license for BNL's bioactive analogs and improved tech-

niques for making the analogs. Several of these bioactive analogs are currently in testing.

Thomas Roueché, BioSET's president, said, "Our team is committed to developing these new, bioactive coatings for the biomedical and biopharmaceutical industries. We are very encouraged by the performance of these totally synthetic growth factor analogs as compared to currently available recombinant growth factors, many of which are either already approved for use or are being evaluated in end-state clinical trials for the treatment of serious disease states. We believe synthetic analogs may provide a valuable alternative with improved safety, cost and efficacy."

Peña explained, "We were working on new strategies for radiation-protection drugs, but, when this technology proved to be successful, it became clear that there was a much broader range of applications that became available for us to pursue."

"This technology is unique because these growth factor analogs are chemically synthesized," Peña added. "This should result in significant cost savings, compared to current methods of producing growth

New BNL Director: Praveen Chaudhari

Brookhaven Science Associates announced yesterday that distinguished scientist and research director Praveen Chaudhari had been selected as the next Director of DOE's Brookhaven National Laboratory, effective April 1. For more information, go to <http://www.bnl.gov>.

factors, giving us a great deal of control in making useful modifications. Our studies show that the FGF analogs are active and biologically equivalent to natural FGF, and that they work in animal models of human disease. What makes some of this possible is that our analogs specifically adhere to BioSET's coatings."

Based on their preliminary research, the scientists believe that the new growth factor technology will be important in developing therapies to treat wounds and other diseases, especially when combined with BioSET's heparin-based growth-factor technology. BioSET's unique, modified heparin is a coating that allows delivery of proteins in their most bioactive form. — Diane Greenberg

Murder, Suicide, and a Trip to Princeton

Or how a virus can cause a cell to destroy itself, and how a meeting at Princeton University contributes to research at BNL

Viruses use actin, the most abundant protein in the cells that they are infecting, to break open the cells to allow new viruses to escape and infect others.

This discovery, described in the November 29, 2002, *Journal of Biological Chemistry*, was made by Walter Mangel, Biology Department, and his team, in collaboration with the laboratories of Nancy Reich, Stony Brook University, and Gerard Marriott, University of Wisconsin. The research is funded by the Office of Biological & Environmental Research in DOE's Office of Science and the National Institutes of Health (NIH).

The findings, which build upon Mangel's earlier research on how virus particles become infectious (See The Bulletin, January 18, 2002), may lead to the design of more effective antiviral remedies.

Murderous Intent

When a virus infects a cell in the body, one of its objectives is to make new virus particles that can infect and reproduce in adjacent cells. Using many of a cell's components for replication, one virus can produce thousands of virus particles within one cell.

The virus's next step is to cause the cell to lyse, or self-destruct, by breaking open and releasing newly synthesized virus particles that can infect adjacent cells. Different viruses employ different strategies in lysing cells late in infection. If cells with newly synthesized virus particles do not break open, then the virus infection is essentially aborted.

Hatchet-Job Enzymes

Mangel's group, which includes Bill McGrath, Mary Lynn Baniecki, Jennifer Perek, and Ann Marie DeGruccio, has been studying a protease made by human adenovirus, a virus that causes gastrointestinal and respiratory infections, and conjunctivitis. A protease is an enzyme that cleaves, or cuts, other proteins, making them shorter.

In human adenovirus infection, newly synthesized virus particles are not infectious. They contain precursor proteins, that are slightly larger than those that are seen in infectious virus. The precursor proteins act as "construction" parts, which are needed for virus particle assembly.

Mangel's group had shown that the adenovirus protease is synthesized in the cytoplasm of cells — the area between a cell's membrane and nucleus — in an inactive form. The protease migrates from the cytoplasm into the nucleus where it is incorporated into newly synthesized virus particles. Inside these particles, the protease becomes activated by binding to the viral DNA and cleaving off a small fragment, pVlc, of a viral protein. The pVlc then binds to the protease and fully activates it.

Said Mangel, "Builders remove supportive scaffolding after completing a construction project. Similarly, the activated protease cleaves the viral precursor proteins, leaving infectious virus particles behind. Both the viral DNA and pVlc are cofac-

tors for the adenovirus protease's becoming active in that their presence enhances its cleaving ability."

The Princeton Connection

A connection between cell lysis and the adenovirus protease was made serendipitously when Mangel gave a seminar on his protease research at Princeton University. He had been invited there by Clarence Schutt of the Chemistry Department, whom he had met while serving on a special study section at the NIH. During the talk, after Mangel showed the sequence, or formation, of pVlc, Schutt said that he had seen that sequence elsewhere.

"I found this hard to believe," Mangel admitted. "Ever since we'd discovered pVlc, our group had periodically searched the various databases to see if there were other proteins that contain the pVlc sequence — and we never found anything."

Later that day, Schutt showed Mangel the sequence of actin. Mangel saw that, of the last seven amino acids of actin, four are identical and three homologous to the sequence of pVlc.

At first, Mangel said, he was quite shocked by this revelation, but then he began to think of its implications.

"Wow! Can you spare some actin for me to take back to BNL tomorrow?" he asked.

The next day, Mangel brought the actin to his lab at BNL, where Diana Toledo, formerly of Biology, was waiting. They tested to see if actin could be a cofactor.

Self-portrait by Wally Mangel, Biology Department, in graphite. The bar graph (upper left) shows the results of an experiment by Bill McGrath, Biology, in Mangel's lab, that was published in *Nature*. This was the first description of the two viral cofactors that stimulated the protease. Now, Mangel and his team have identified a third cofactor, the most abundant cellular protein, actin.



"In the very first experiment, it was clear that actin can be a cofactor for the adenovirus protease," Mangel said. "Incubating actin and the adenovirus protease increases the cleaving activity of the adenovirus protease, just as pVlc can do."

Cell Suicide

Actin is the most abundant protein in a cell. Mangel explained that one of its functions is to form actin polymers that act as the steel girders in skyscrapers, giving rise to the structure of a cell. Conversely, if their actin is destroyed, cells lose their shape and eventually break open.

In the November 29 article, the authors show that the adenovirus protease binds to actin, and, in doing so, becomes activated. They also noted that the sequence of actin contains two sites that can be cleaved by the active adenovirus protease. Incu-

bation of actin with the adenovirus protease not only activates the protease, but also allows it to cleave actin at those two sites.

"Thus, actin is a cofactor for its own destruction, a new and philosophically interesting way for a virus to lyse cells," Mangel commented.

Crystallizing the Future

Mangel's group has already set up crystallization trials of actin bound to the adenovirus protease.

"If we can crystallize the complex, then we may be able to determine its atomic structure at the National Synchrotron Light Source at BNL," Mangel said. "That structure would then be used to find drugs to prevent the interaction between actin and the adenovirus protease. Such drugs could serve as a new type of antiviral agent."

— Karen McNulty Walsh

Calendar
of Laboratory Events

- The BERA Sales Office is located in Berkner Hall and is open weekdays from 9 a.m. to 3 p.m. For more information on BERA events, contact Andrea Dehler, Ext. 3347; or M. Kay Dellimore, Ext. 2873.
- Additional information for Hospitality Committee events can be found at the Lollipop House and the laundry in the apartment area.
- The Recreation Building (Rec. Bldg.) is located in the apartment area.
- Contact names are provided for most events for more information.
- Calendar events flagged with an asterisk (*) have an accompanying story in this week's Bulletin.

— EACH WEEK —

Weekdays: Free English for Speakers of Other Languages Classes

Beginner, Intermediate, and Advanced classes. Various times. All are welcome. Learn English, make friends. See www.bnl.gov/esol/schedule.html for schedule. Jen Lynch, Ext. 4894.

Mondays: BNL Gospel Choir

5:15-7 p.m. Berkner Hall. All faiths are welcome. www.bnl.gov/bera/activities/choir/.

Mon., Tues., & Thurs.: Kickboxing

\$5 per class. Mon. & Thurs. noon-1 p.m. in the gym; Tues., 5:15-6:15 p.m. in the gym; Thurs., 5:15-6:15 p.m. in Brookhaven Ctr. Registration is required. Mary Wood, Ext. 5923, or wood2@bnl.gov.

Mon., Thurs., & Fri.: Tai Chi

Noon- 12:45 p.m., Brookhaven Center North Room. Adam Rusek, Ext. 5830 or rusek@bnl.gov.

Mondays: BNL Dance Club Ballroom, Latin & Swing Practice

5:30-7 p.m. North Ballroom, Brookhaven Center, except Lab holidays. Jean Logan, jlogan@bnl.gov or Ext. 4391.

Tuesdays: Welcome Coffee

10-11:30 a.m. Rec. Bldg. Hospitality event. Come and meet friends. The first Tuesday of every month is special for Lab newcomers and leaving guests. Hospitality Chair Monique de la Beij, 399-7656.

Tuesdays: BNL Music Club

Noon, North Room, Brookhaven Center. Come hear live music. Joe Vignola, Ext. 3846.

Tuesdays: Singles Club

12:30-1:30 p.m., Berkner Hall. Jean Logan, Ext. 4391, Patrick Pages, Ext. 3270.

Tuesdays: Aqua Aerobics

5:15-6:15 p.m. Mary Wood, Ext. 5923.

Tuesdays: BNL Dance Club Individual & Couples instruction

5-11 p.m. North Ballroom, Brookhaven Center. Ron Ondrovic, ondrovic@bnl.gov or Ext. 4553.

Tuesdays: Toastmasters

1st and 3rd Tuesday of each month, 5:30 p.m., Bldg. 463, room 160. Guests, visitors always welcome. www.bnl.gov/bera/activities/toastmasters/default.htm.

Tuesdays & Thursdays: Aerobics

5:15-6:30 p.m., \$4 per class. Rec. Bldg. Pat Flood, Ext. 7886.

Tuesdays & Thursdays: Aqua Aerobics

5:15-6:15 p.m. Mary Wood, Ext. 5923.

Wednesdays: On-Site Play Group

10 a.m.-noon. Rec. Bldg. A infant/toddler drop-in event. Parents meet while children play. Svetlana Agafonova, 205-5065.

Wednesdays: Weight Watchers

Noon-1 p.m., Brookhaven Center South Room. Mary Wood, Ext. 5923, wood2@bnl.gov.

Wednesdays: Yoga Practice

Noon-1 p.m., Brookhaven Ctr. Free. Ila Campbell, Ext. 2206.

Wednesdays: Open Chess Night

5-8 p.m., Rec. Hall. Christine Carter, Ext. 5090.

Wednesdays: Exercise 101

5:15-6 p.m., Rec. Bldg. \$4 per class or \$35 for 10 classes. Stretching, low-impact aerobics, and other exercises. Pat Flood, Ext. 7886.

Wednesdays: Dance Club Group Lessons

5-9 p.m. North Ballroom, Brookhaven Center. Marsha Belford, belford@bnl.gov or Ext. 5053.

Fridays: Family Swim Night

5-8 p.m. at the BNL Pool. \$5 per family.

Fridays: BNL Social & Cultural Club

8-11:30 p.m., Brookhaven Ctr., social. Rudy Alforque, Ext. 4733, rudy@bnl.gov.

Saturdays: BNL Dance Club Monthly Ballroom Dance Social

8-11:30 p.m. Ballroom, Latin & swing dancing, North Ballroom, Brookhaven Center. 2/15, 3/15, 4/12, 5/17. Marsha Belford, belford@bnl.gov or Ext. 5053.

— NEXT WEEK —

Wednesday, 2/5

***Camera Club Meeting**

Noon-1 p.m., Berkner Hall, Room D. See also page 3. Ripp Bowman, Ext. 4672.

Science Education Forum

Noon-1 p.m., Bldg. 438. All are welcome to join a discussion on interesting and timely issues in science education. Refreshments will be provided. Bring your own lunch. Brian Murfin, Ext. 7171.

Thursday, 2/6

Cyclotrons Motorcycle Club Meeting

4:45 p.m., Brookhaven Center. The BNL Cyclotrons Motorcycle Club will hold its monthly meeting. Frank Dusek, Ext. 2022.

BNL Celebrates 233 VIPs' 2002 Service Anniversaries



D1020202



D0891202



D01071202



D0791202



D0651202



D0701202



D0851202



D0651202



D0911202

Heavy snow on the original December 5 date of BNL's annual party for Very Important Persons (VIPs) — employees who have contributed 25, 30, 35, or greater than 35 years of service to the Lab — postponed the celebration until Monday, December 9. But the change of date made no difference to the guests' enjoyment of the event.

Thomas Sheridan, Deputy Laboratory Director for Operations, welcomed the service awardees and warmly thanked them for their contributions to BNL. Invitations had been sent to 233 VIP employees with service anniversaries in 2002: 89 who had been at the Lab for 25 years, 25 who had arrived at BNL 30 years ago, 20 who were celebrating their 35-year anniversaries, and 14 who had served the Lab for 40 years. Two, George Dioguardo of the Procurement & Property Management Division, and Lenny Newman of the Environmental Sciences Department, have been at BNL for 45 years.

Star of the evening was Seymore "Sy" Rankowitz (above, center) of the Instrumentation Division, who continues to work at the Lab after 53 years of service.

The photos above and others taken by Roger Stoutenburgh, Photography & Graphic Arts Division, at the event, may be seen at <http://intranet.bnl.gov/reception>.

Inside Info

Students mentored at the Lab by BNL scientists win outside recognition.

DOE Publishes Two Students' Papers

Two undergraduate students who were enrolled in a DOE-funded internship program at BNL last summer were chosen to have their scientific papers published in DOE's 2003 Journal of Undergraduate Research, Volume 3. Of 352 papers reviewed by Einstein Fellows, 17 were chosen for publication. Students in the program are mentored by BNL staff members and provided with research experience in chemistry, physics, engineering, biology, nuclear medicine, applied mathematics, particle accelerators, or science writing.

On site, BNL's Office of Educational Programs manages the DOE-sponsored program, formerly called the ERULF program, which has been renamed the Science Undergraduate Laboratory Internship (SULI) program.

Yannis Semertzidis, Physics Department, mentored the then-ERULF student Tomaz Malisiewicz of Rensselaer Polytechnic Institute during the summer of 2002. The paper that resulted from Malisiewicz's research at BNL is titled "Modeling Relativistic Muons in Electromagnetic Storage Rings via Object Oriented Techniques."

Katrina Weaver, a student at Southern Utah University, came to BNL in the spring of 2002 and was mentored by Peter Thanos, Medical Department. The paper that she wrote resulting from her work at BNL is titled "Dopamine D2 Receptor Upregulation in the Nucleus Accumbens of Dopamine D2 Receptor Deficient Mice: Effect on Alcohol Drinking."

In addition to having their papers published in the DOE journal which is distributed to major universities, libraries, and the U.S. Congress, Malisiewicz and Weaver have been invited to present their research at the student poster session of the American Association for the Advancement of Science annual meeting this February.

— Diane Greenberg

Intel Semifinalists

Schools across New York State collected more than half of the semifinalist Intel Science Awards which are distributed nationwide, and four of the student semifinalists were mentored by BNL scientists.

Brandon Imber, Commack High School, a participant in the community summer science program organized by BNL's Office of Educational Programs (OEP), and Clara Tow, Smithtown High School, were mentored by Tianbo Liu of the Physics Department. Liu helped the students work on inorganic synthesis to make novel giant polyoxomolybdate-based (POMs) molecules with special magnetic properties, research which may prove to have medical applications.

Ashish Bhatt, a Newfield High School student who also participated in OEP's summer science program, was mentored by Marcelo Vazquez of the Medical Department. Bhatt studied apoptosis, the death of cells, in this case, following irradiation. This research has vital implications for radiation therapy and long-term space travel.

Alec Berntson of Smithtown High School was mentored by Helio Takai of Physics with assistance from Vivian Stojanoff and Jean Jakoncic of the National Synchrotron Light Source. Berntson developed neural network software code to analyze the quality of protein crystals based on their diffraction pattern. Takai plans to continue to work with Berntson next summer.

Another BNL-related Intel semifinalist is Stephen Dawson-Haggerty, student at Ward Melville High School and son of BNL physicists Sally Dawson and John Haggerty, who was recognized for his work on modeling diffraction-scattering from polymers. Dawson-Haggerty conducted his work in the Chemistry Department at Stony Brook University under mentors Ben Chu and Christian Burger.

— Jane Koropsak

Chinese New Year
Party Tomorrow, 2/1

A Chinese New Year's party will be held in the Recreation Hall in the apartment area at 6 p.m. tomorrow, Saturday, February 1. The contribution will be: adults, \$5 each; children over 15, \$2 each. All are welcome. Contact Zhipeng Chang, Ext. 4343, or Dantong Yu, Ext. 3042 for details.

Retirement Counseling

A TIAA-CREF representative will visit BNL on Friday, February 28 and Friday, March 7, to answer employees' questions regarding the TIAA-CREF retirement plan, such as TIAA and CREF differences, allocating funds between TIAA and CREF, options, flexibilities with TIAA/CREF, and retirement options.

To arrange a 45-minute appointment, call Wanda Ezekiel, (800) 842-2733, Ext. 2235 (*not* the on-site Ext. 2235).

Coming Up

Linda Chang of the Medical Department will give the 380th Brookhaven Lecture at 4 p.m., Wednesday, February 19.

Author Carl Safina will give a BSA Distinguished Lecture on "History and Destiny of World Fisheries," at 4 p.m., Thursday, February 20.

Camera Club, 2/5

The Camera Club will hold a general meeting, noon-1 p.m. on Wednesday, February 5, in Berkner Hall, Room D. Field trips, digital photography, and darkroom black and white developing and printing will be discussed. Beginners and nonmembers are always welcome. For more information, call Ripp Bowman, club president, Ext. 4672.

Exploring Research Library Resources

The Research Library invites all BNL employees and guests to attend a series of brown-bag seminars on information resources available to the Lab community. Attendees will learn how to get the most out of the databases available through the Research Library Home Page at <http://www.bnl.gov/isd/reslib/>.

Upcoming Monday workshops include:

- 2/3 - Web of Science
- 3/10 - IEEE Xplore
- 2/24 - Engineering Village 2
- 3/31 - SciFinder

The seminars will be conducted by information specialists from the database providers and will be held from noon to 1 p.m. at Berkner Hall in Room B, except for the March 10 session, which will be in Room C. Bring lunch — refreshments and door prizes will be offered. For more information, call the Research Library at Ext. 3483 or 7761, or go to www.bnl.gov/isd/reslib/LunchSem.htm.

Web of Science, Monday, February 3

A multidisciplinary database from ISI with a cited reference search that enables users to search by author, subject, source, institution, and category, to set up alerts, to know who cites a particular paper, to track research activities, and to follow the history of a scientific concept via its cited references.

Healthline Lecture Series

Women and Heart Disease

Jean Cacciabauda, M.D., will present, "Women and Heart Disease: An Update . . . Not for Women Only" on Tuesday, February 11, noon – 1 p.m., in Berkner Hall. See calendar, above, right.

Softball Captains, 2/5

Softball captains will meet at noon on Wednesday, February 5, in Berkner Hall, Room C. At least one representative from each team that plans to play this season must attend, and preliminary team rosters must be submitted. New teams wanting to join will be placed in the league determined by the board. To run for the Board or to nominate someone, you must attend the meeting. It is not necessary to be a captain to be on the board. For more information, e-mail softball@bnl.gov.

Service Awards

The following employees celebrated BNL service anniversaries during December 2002.

40 Years

William Crockett Biology

35 Years

Ronald Weider C-A

30 Years

I Hung Chiang C-A

25 Years

Jonathan Hanson Chemistry

Keith Detmer Plant Eng.

Michael Paquette Plant Eng.

James Osterlund C-A

Bennett Azzara Magnet

Wayne Rambo NSLS

Robert Ritter C-A

Elizabeth Seubert CEGPA

John Warren Instrumentation

20 Years

Roger Lee C-A

Peter Johnson Physics

Elliott Levitt Internal Audit

10 Years

Christopher Porretto Magnet

Regina Shea Biology

Ronald Beauman NSLS

Gail O'Hern HR

Sally Calabrese Plant Eng.

Keep on Singing

Anyone interested in learning four-part carols set to music by, for example, Mozart and Fauré, will be welcomed by the small group practicing under the direction of Sam Carr on Mondays at noon in Berkner Hall. Contact Liz Seubert, Ext. 2346 or lseubert@bnl.gov.

Valentine Dinner, 2/14



The Hospitality Committee cordially invites all visitors, guests and their families to a Valentine's Day dinner party on Friday, February 14, at 6 p.m. at the Recreation Hall in the apartment area.

As a special treat, this party is paid for by the committee. So you do not have to bring a dish to share — just attend the dinner and enjoy. For more information, call Monique de la Beij, Ext. 7656.

Gospel!



Heavenly Homeboys



Shana Griffin-Sneed



Divine Expression

Berkner Hall, Saturday, February 8

In honor of Black History Month, BNL's African-American Culture Club will present a Gospel Extravaganza on Saturday, February 8, at 7 p.m. in Berkner Hall. The concert is open to the public. All visitors to BNL age 16 and over must bring a photo ID.

The program will feature The Shekinah Choir, the official choir of the Church of God in Christ, Third Ecclesiastical Jurisdiction, Eastern New York. Established in 1988, the choir has given concerts in New York and the surrounding area under the direction of Reverend Frank Anthonie White, founder and president of Music Quest Records. The choir's recordings include "For This . . . We Have Jesus" and "Havin' Church."

Other choirs performing include the BNL Gospel Choir, comprised of Lab employees and their families; Shana Griffin-Sneed, a sixth-grade student from Bellport Middle School who has performed at Stony Brook University's Staller Center for the Arts, among other venues; the Heavenly Homeboys, a two-year-old group from Brooklyn; and Divine Expression, a group from the First Baptist Church, Bayshore, who will perform praise-dancing, a form of worship through dance.

Tickets are on sale in Berkner Hall at the BERA Sales Office, Ext. 3347, open weekdays, 9 a.m.-3 p.m. Tickets for adults are \$12 in advance, \$15 at the door; children under 12 pay \$6 only. For information on ticket availability on the date of the concert, call 344-3547 after 4 p.m.

Music Club Music Coming Soon!

February 15, 8 p.m.

Songwriters Make Music



The BNL Music Club and the East End Songwriters Guild present the first of a "Songwriters Series," open to the public. This event will begin with a "Songwriters-in-the-Round" followed by a concert featuring singer-songwriters Cathy Kreger and Terry Winchell. Tickets cost \$10 and may be purchased at the door. For more information, see www.bnl.gov/bera/activities/music/.

March 1, 8 p.m.

Kerry Kearney Band, Guests



The BNL Music Club and the Long Island Blues Society will present Kerry Kearney's Band in "The Gathering of the Slides." Michael Falzarano, Kane Daly, Little Toby Walker, and Amy Helm will be featured as special guests. Admission: \$10 in advance, \$12 at the door, free for children of 16 years and younger. For more information, see www.bnl.gov/bera/activities/music/.

Daffodil Days

BERA will again be selling daffodils to benefit the American Cancer Society. A bunch of ten fresh-cut flowers is \$7.

These beautiful spring bouquets may be picked up on Tuesday, March 25. Paid reservations are being taken at the BERA Sales Office in Berkner Hall.

BERA Ski Trip

All are welcome to join a BERA-sponsored ski trip to Camelback Mountain, Pennsylvania, on Wednesday, February 26, at \$50 per person, which includes bus and lift ticket. Rent skis for an additional \$16, or a snowboard for \$23. A first-time-skier package of \$60 covers bus, restricted lift ticket, equipment rental and a one-and-a-half hour lesson. The bus will leave the Brookhaven Center at 5:30 a.m. and return at approximately 8 p.m. Make paid reservations at the BERA Sales Office. For more information, call Andrea Dehler, Ext. 3347, or Bob Marascia, Ext. 7779.

Arrivals & Departures

Arrivals

Isabel Abreu Chemistry
Kenneth Evans-Lutterodt.... NSLS
Kathleen Herbert Occ. Med.

Departures

Kent Brace CA-D
Kasper Eriksen Physics
Jawaid Mansury Biology
Michael Nekulak CA-D

Calendar

(continued)

Saturday, 2/8

Gospel Extravaganza

7 p.m., Berkner Hall. Admission: in advance, adults, \$12, children under 12, \$6; at the door, adults, \$15. See left.

— WEEK OF 2/10 —

Monday, 2/10

Free Movie Night

6:30 p.m., Berkner Hall. All are welcome to view a Chinese film with English subtitles called "Shower," rated PG-13. Deepali Mitra, Ext. 5360.

Tuesday, 2/11

Healthline Lecture Series

Noon-1 p.m., Berkner Hall. North Shore University Hospital's Associate Director of Nuclear Cardiology Jean Cacciabauda will present "Women and Heart Disease: An Update . . . Not for Women Only." This lecture will review risk factors in women for developing heart disease and how these risks differ from those faced by men. Hormone replacement therapy and the latest diagnostic techniques will also be discussed. Check your mailbox for registration forms. Mary Wood, Ext. 5923.

Friday, 2/14

Valentine's Day Blood Drive

9:30 a.m.-3 p.m., Brookhaven Center. BNLers from 17 to 75 years of age, in good health, and weighing over 110 lbs. are welcome. All donors should have photo identification and know their social security number. Susan Foster, Ext. 2888, donateblood@bnl.gov.

Valentine's Day Tea

Noon-2 p.m., Rec. Bldg. Cookies, snacks, tea, and coffee will be provided by BNL's English for Speakers of Other Languages program. Bring your own lunch. Paper will be supplied for Valentine's Day card-making. Jen Lynch, Ext. 4894.

Valentine Dinner

6 p.m., Recreation Hall. Offered by the Hospitality Committee. See notice at left. Monique de la Beij, Ext. 7656.

Saturday, 2/15

Songwriters Make Music

8 p.m., Berkner Hall. The BNL Music Club and The East End Songwriters Guild present "Songwriters Series," open to the public. Admission: \$10. See notice at left and www.bnl.gov/bera/activities/music/.

— WEEK OF 2/17 —

Wednesday, 2/19

Science Education Forum

Noon-1 p.m., Bldg. 438. All are welcome to join a discussion on interesting and timely issues in science education. Refreshments will be provided. Bring your own lunch. Brian Murfin, Ext. 7171.

380th Brookhaven Lecture

4 p.m. Berkner Hall. Linda Chang, Medical Department, will give the lecture, title to be announced.

Thursday, 2/20

BSA Distinguished Lecture

4 p.m., Berkner Hall. Author Carl Safina, Blue Ocean Institute President, will talk on "History and Destiny of World Fisheries." All are welcome to attend this free public lecture.

— WEEK OF 2/24 —

Wednesday, 2/26

BERA Ski Trip to Camelback

\$50 per person. See notice, below, left. Sign up at the BERA Sales Office in Berkner Hall. For more information, contact Andrea Dehler, Ext. 3347; Bob Marascia, Ext. 7779; or Christine Carter, Ext. 2873.

Saturday, 3/1

Kerry Kearney Band, Guests in 'The Gathering of the Slides'

8 p.m., Berkner Hall. The BNL Music Club and the Long Island Blues Society. See notice at left.

Note: This calendar is updated continuously and will appear in the Bulletin whenever space permits. Submissions must be received by the preceding Friday at noon to appear in the following week's Bulletin. Please enter the information for each event in the order listed above (date, event name, description, and cost) and send it to bulletin@bnl.gov. Write "Bulletin Calendar" in the subject line.

Classified Advertisements

Placement Notices

The Lab's placement policy is to select the best-qualified candidate for an available position. Candidates are considered in the following order: (1) present employees within the department/division and/or appropriate bargaining unit, with preference for those within the immediate work group; (2) present employees within the Laboratory; and (3) outside applicants. In keeping with the Affirmative Action Plan, selections are made without regard to age, race, color, religion, national origin, sex, disability or veteran status. Each week, the Human Resources Division lists new placement notices, first, so employees may request consideration for themselves, and, second, for open recruitment. Because of the priority policy stated above, each listing does not necessarily represent an opportunity for all people. Except when operational needs require otherwise, positions will be open for one week after publication. For more information, contact the Employment Manager, Ext. 2882; call the JOBLINE, Ext. 7744 (344-7744), for a list of all job openings; use a TDD system to access job information by calling (631) 344-6018; or access current job openings on the World Wide Web at www.bnl.gov/HR/jobs/default.htm.

OPEN RECRUITMENT – Opportunities for Laboratory employees and outside candidates. **MK2842. POSTDOCTORAL RESEARCH ASSOCIATE** – Requires a Ph.D. in theoretical elementary particle physics. Position is with the high-energy theory group which has programs in electroweak, neutrino, and QCD physics along with lattice gauge theory studies. Under the direction of S. Dawson. Physics Department.

MK2603. POSTDOCTORAL RESEARCH ASSOCIATE — Requires a Ph.D. in biophysics, biochemistry or related field, and experience with diffraction techniques. Knowledge of macromolecular crystallography and/or powder diffraction is a plus. Research will involve the exploration of alternative methodologies to study the three-dimensional structure of protein and protein/ligand complexes. Under the direction of M. Allaire. National Synchrotron Light Source Department.

MK2808. POSTDOCTORAL RESEARCH ASSOCIATE — Requires a Ph.D. in biochemistry or biophysics, with experience in membrane protein studies. Will investigate functional regulation of heavy metal transporter systems through protein-protein interactions. This work involves the study of complex protein machines involved in transmembrane flux of heavy metal ions. Will use a multidisciplinary approach for expression, purification and characterization of heavy metal transporter systems and for crystallization and structural determination of membrane transporters and their associated regulatory proteins. Under the direction of D. Fu. Biology Department.

NS2604. ASSISTANT STAFF SPECIALIST (A-4) — Requires a bachelor's degree in business, accounting or related field; knowledge of Laboratory financial systems such as Peoplesoft, LCDS, and Query reports. Must have excellent organizational, and interpersonal skills and the ability to multi-task. Knowledge of MS Excel, Outlook, Word, and ability to generate queries in Peoplesoft is highly desirable. Will process and record staff time and update Labor Cost Distribution System (LCDS). Will utilize Peoplesoft budget and forecast modules, and other financial systems to order and account for materials, equipment, supplies, travel, and process invoices for payment. Responsibilities will include providing budgetary and administrative support for the NSLS and for the Center for Functional Nanomaterials (CFN) Jumpstart and Construction Project efforts. National Synchrotron Light Source Department.

NS2605. ADMINISTRATIVE SERVICES ASSISTANT (A-2, term appointment) — Requires an AAS (database management, computer technology, business) plus at least 2 years' relevant experience, as well as database creation and maintenance skills, strong analytical, communication and interpersonal skills, and proficiency in MS Access and Word, MS Outlook; knowledge of Lab policies and procedures are desirable. Involves extensive interaction with NSLS user community and staff. Utilizing various databases, primary responsibilities include issuing user appointments, monitoring training exams and issuing personal dosimeters, as well as other database maintenance, input and reporting as directed by the NSLS User Administrator. National Synchrotron Light Source Department.

TB2869. LABORATORY TECHNICIAN (CW-1- Part-time/term position) – Requires strong interpersonal skills, the ability to work effectively in a team environment and carry out assignments safely with minimum supervision and oversight. In addition, must have a strong customer focus and have the ability to understand and follow standard laboratory procedures, safety protocols, and maintain necessary records. Previous work in a scientific laboratory setting is desirable. Primary responsibilities include the cleaning of environmental sample containers and field sampling equipment for the Environmental Services Division and glassware washing and associated services for the Medical Department. Environmental Services Division.

Motor Vehicles & Supplies

02 YAMAHA YZF-R6 - blue & white, 7,300 mi., excel. cond., \$7,000. Shannon, 516-456-5838.

01 HYUNDAI TIBERON - black, loaded w/ extras, spoiler, 19K mi., transferrable warr., \$13,000 firm. Barbara, 732-7186.

99 CHEVY MALIBU - all power, 25K mi., well maint., excel. cond., loaded, long distance mi., like new, \$7,500. 286-8740.

99 TOYOTA COROLLA - beige, all power, 4-dr., tilt, cruise, new tires/brakes, excel. cond., 50K mi., \$8,195. Ralph, 325-0145.

98 DODGE CARAVAN SE-V6 - all power, 7-8 pass., left & right sliding door, excel. cond., 69K mi., \$9,000. Ken, 281-5565.

97 HYUNDAI ACCENT - 5-spd., a/c, p/s, p/b, 106K mi., CD changer, alarm, sunroof, \$2,250. Phil, Ext. 4584 or 821-1839.

96 T-BIRD - LX, pearl white, 60K mi., spoiler, sunroof, alarm, new tires, \$5,900. mint. Russ, 208-0374.

96 VOLKSWAGON GOLF GL - green, a/t, a/c, p/s, 92K mi., alarm, \$4,500. Rich, Ext. 7013 or 698-5294.

95 MERCURY VILLAGER GS - all power, 94K mi., front & rear a/c, new tires, roof rack, garaged, \$5,200 neg. Joe, Ext. 4826 or 821-3762.

94 DODGE CARAVAN - 3.0, V6, auto., a/c, am/fm cass., 60K orig. mi., runs well, clean, \$3,600. Li, Ext. 7604

94 FORD TAURUS - all power, 142K mi., excel. cond., clean in & out, \$3,200. Donna, Ext. 6044 or 224-1447.

94 TOYOTA COROLLA DX - 5-spd., a/c, p/s, p/b, 1.8 L., 121K mi., 4-cyl., metallic green, clean, well maint., newly inspected, good cond., \$2,700. Jay, Ext. 8336 or 476-8613.

94 TOYOTA PREVIA - silver, all power, 126,500 mi., v.g. cond., \$4,500. Donna, Ext. 2542.

93 FORD EXPLORER - all power, 105K mi., great shape, good for the beach & snow, new trans., roof rack. Bob, 821-8347.

93 JEEP CHEROKEE - all power, 88K mi., 4 wd, excel. cond., \$4,800. Doug, Ext. 2262 or 474-3846.

92 DODGE CARAVAN - a/t, a/c, p/s, p/b, 138K mi., new tires, exhaust, brake pads & cylinders, runs well, \$1,000. Joseph, 516-903-2013.

92 FORD ASPIRE - 5-spd., 104K mi., excel. mechanical cond., 42mpg, extra set of new tires incl., \$900. Charles, Ext. 4612.

91 NISSAN SENTRA XE - auto., a/c, p/s, p/b, moonroof, high mi., mostly hwy, \$1,000. Ed, 821-0063.

90 NISSAN 240 SX - red, auto., a/c, p/s, 108K mi., pioneer CD am/fm, good cond., \$2,000. Dana, Ext. 7447.

90 TOYOTA CAMRY - white, a/t, a/c, p/w, moon roof, cruise, 166K mi., \$900. Ext. 5648.

89 FORD BRONCO XLT - loaded, orig. own., 150K mi., well maintained, good cond., good for snow or beach. 727-3806.

89 GMC 3500 - p/s, p/b, 72K mi., landscape/mason dump, dually, V8, v.g. cond., must sell, best offer. \$6,000. Joseph, Ext. 2350 or 758-2340.

89 NISSAN MAXIMA - a/t, 195K mi., sunroof, runs well, \$1,000. Jeff, Ext. 7580 or 948-2389.

89 TOYOTA COROLLA LE - gray, 5-spd., 4-dr., a/c, p/s, p/b, good cond., reliable, reg. maint., 165K mi., \$1,300. Steven, Ext. 7862.

88 TOYOTA PICKUP - 120K mi., \$1,200. Melinda, 286-4742 or 286-1394.

87 CHEVY SILVERADO BLAZER - black, new tranny, rear end & throttle body, \$4,500. John, 929-6403.

87 PONTIAC GRAND AM - a/t, 91K mi., 2-dr., V6, new tires, runs well, \$475. Chris, Ext. 5032 or 929-7225.

86 VOLKSWAGON GOLF GL - green, 93K mi., a/t, a/c, p/s, p/b, alarm, \$4,500. Rich, Ext. 7013 or 698-5294.

84 VOLVO 240DL - 5-spd., 360K mi., \$750. John, 878-3152.

80 KAWASAKI 440 MOTORCYCLE - \$350. Don, 345-6279.

FIBERGLASS CAP - fits '00 & newer Chevy short bed, tinted recessed windows, flush w/ roof, excel. cond., \$875. Lawrence, Ext. 7460.

GM DIST. CAP - & rotor kit, new, 82-86, \$15. Susan, Ext. 7647.

HOOD DEFLECTOR - excel. cond., will fit 95-99 Ford Explorer. \$20. Rich, Ext. 6153.

SNOWPLOW - Snowway 7½' angle comp for '85 3/4 ton Ford, \$400. Rich, Ext. 4201 or 589-9103.

STEEL CROSS-BED TOOL BOX - weather guard, sliding tray inside, w/two wing type locking doors, for stepside & mini pickups, excel. cond., \$100. Arlene, 878-8302.

TRUCK DURALINER - fits '97 and up 6' Ford under the rail, \$75. Patty, 331-4336.

Boat & Marine Supplies

HYDRAULIC STEERING CYLINDER - side mount, w/instructions, parts list, \$50; outboard bracket, alum., 23 in., setback suits I/O or seadrive conversions, \$150 or \$175/both. Arlene, 878-8302.

Furnishings & Appliances

BEDROOM SET - antique, hardwood dresser w/mirror, nightstand, full size bed w/headboard, \$450. Mary, Ext. 6344.

CHAIR - solid oak, old/antique, painted, gloss black, classic style, excel. cond., \$78. Karen, Ext. 4262.

CHAIRS - 2 upholstered "tapestry" fabric, wood arms & legs, carved front legs w/casters, \$400/pr. 286-3396.

CHEST FREEZER - 4.3 cu. ft., upright, 2 years old, \$75. Michael, Ext. 3255.

COUCH - 3-pc. l/r sectional, white & sea-foam green, \$275; lighthouse picture, blues & pinks, peach frame, \$50. Vicky, 724-8200.

CREDENZA - vintage wood, 2 glass doors, 3 display shelves, 2 drawers, 2 cabinets below, antique white, good cond., needs touch up, \$150. Frank, Ext. 2022.

DINING ROOM SET - Broyhill, 40 yrs. old, table, 2 leaves, buffet, china cabinet, 6 chairs, table pads, \$600. Victor, 585-2084.

DISHWASHER - Whirlpool, quiet, wash plus, 4 cycles, gently used for 3 years, \$75; 8 cabinets, oak, w/4 drawers, 8' long, dish-washer opening, 4' corner piece and stainless steel sink, \$300. Mary, Ext. 6344.

ELECTRIC HEATER - oil filled, Delonghi, 600w-1500w, \$20; humidifier, whole house, 20 qt, Sears, \$20. 567-9025.

FURNITURE - couch, off white, \$35, chairs, grey, \$40; tables, \$30. Nancy, Ext. 4303 or 878-5449.

FURNITURE - Jennifer Convertible queen-size sofa bed & matching chair, \$600; Lane double recliner, \$300. Donna, Ext. 2826.

MUG RACK - Abbey Press, holds approx. 80-100 mugs, swivels, black metal w/storage below, new cond., \$100 obo. 821-2586.

OFFICE CHAIR - brand-new Herman Miller Aeron chair. Best ergonomic chair available, lists at \$800, make offer. Mary, Ext. 4776.

SOFA - Flexsteel, 87" sofa, tropical print, v.g. cond., comfortable, picture avail., \$150. Nancy, Ext. 5744 or 929-4440.

WASHER/DRYER COMBO - apt. size, good cond., \$75. Joseph, 516-903-2013.

WALL UNIT - center table, light color \$550 for both neg. Pat, 399-5083 eve.

Tools, House & Garden

BOILER - Weil McLain, model 368, '90, 3 sect., wet base, w/coil, 151K Btu., \$325. Chris, Ext. 5032 or 929-7225.

Sports, Hobbies & Pets

AQUARIUM - 55 gal. fish tank & stand, just cleaned & in excel. cond.. David, Ext. 4487 or 736-7739.

CAMERA - N90S, w/vertical grip battery pack, mint cond. \$575. Joe, Ext. 2384.

CATS - Oreo, b/w male, neutered, 7 years old, loves children & cuddling, declawed; his friend b/w tux, 10 mos., vax/tested, sweetheart, left on doorstep. Renee, 924-9264.

CRAFTMATIC BED - twin, excel. cond., dinette set, formica octagon w/leaf, wrought iron, need new buckets. Ext. 4591.

EXERCISE BIKE - Bionix programmable, used 3 times, orig. \$300, ask. \$100. David, 395-3484.

FISH TANK - 30 gal., assorted tropical fish, heater, Aqua clear filter, Python cleaner, rock formations, supplies, etc., \$65. Linda, Ext. 2733 or 395-6784.

FLUTE - Artley, \$100; ½ size violin, \$100, all in good cond. Ext. 3828.

HUFFY BASKETBALL SYSTEM - portable & height adjustable, \$75. Mary, Ext. 4776.

LOVABLE CLOWN CAT - neutered, all shots, litterbox trained. Laptop purrmachine. Loves people, hates cats. Pat, Ext. 3902.

MULTI GYM - 175 lbs. weight stack, seated leg press station plus arm press, butterfly, leg ext., curl station, needs new cable, \$75. Victor, 580-1432.

PIANO - Kohler & Campbell upright, black, like new, w/European-style console. Has sustain, una corda, middle practice pedal, warm, rich sound, tuned, surface lacquer in pristine cond., \$2,000 obo. Madina, 872-3550.

PORTABLE TRAINING BAG - Wave-master, water filled base, used for karate training, \$60. Mike, Ext. 3255.

SKIS - Dynastar, Kastle, w/bindings & poles, 180cm long each pair, v.g. cond., \$35/ea. set. Ron, 751-8403.

TREADMILL- non-motor, \$50. Rich, Ext. 4201 or 589-9103.

TREADMILL - good cond., \$175. 751-6571.

TROMBONE - Yamaha trombone, excel. cond., w/f key, \$525. Maryann, Ext. 4705 or 929-4978.

WETSUITS - Body Glove spider, ¾, size med., excel. cond., Quicksilver, ¾ winter suit, size MT. Zeb, 516-807-6896.

Audio, Video & Computers

COMPUTER - H.P. Pavilion PII650, 396MB ram, 30 68HD CD & CD burner, WZK w/ flat bed scanner, \$150. John, Ext. 5100.

COMPUTER - Gateway P100, w/15" monitor, \$75. 751-6571.

PALM 515 PDA - Palm PDA, brand new, factory sealed box, \$250. Bill, Ext. 2388.

TELEVISION - Zenith, 32", good cond., \$500. Sande, 345-6279.

TV - 23" color, works well, \$40. Nancy, Ext. 4303.

VIDEO CASSETTE PLAYER - RCA, ac/dc used in conversion van, 2 yrs. old, paid \$140, ask. \$80. Mike, Ext. 3255.

VIDEO GAME SYSTEMS - Playstation system w/1 controller & 4 games, \$115. Nintendo64 system w/2 controllers & 3 games, \$130. Kim, Ext. 4660 or 399-3098.

Valentine's Day Blood Drive

Give life — a gift from the heart

A message from Susan Foster, BNL's Blood Drive Chair:

- Since there is no substitute for blood, the community's blood supply depends on people like us.
- Blood is in constant demand for accident and burn victims, surgery and cancer patients, and others in need.
- The blood supply needs to be replenished constantly because blood products only last from 5 to 42 days.
- Less than 20 percent of BNers donate blood each year.
- Anyone between the ages of 17 and 75, in good health and weighing at least 110 lbs., can donate blood.
- If you give blood, then bring official photo identification and know your social security number.
- Schedule an appointment to donate at the Brookhaven Center, Friday, February 14, 9 a.m.-3 p.m., by e-mail at donateblood@bnl.gov or, if you do not have access to e-mail, call Susan Foster at Ext. 2888. Your e-mail should include your name, phone, and preferred time. Your request will be confirmed via return e-mail. Thank you!

Gift dinner for two for donating: Medical Department staff members have donated a gift certificate for a dinner for two at a local restaurant. The lucky Valentine donor will be selected on the day of the Blood Drive. Will you be the fortunate person who saves a life and has a fun night out also?

Coming soon! The BERA Store Mini-Mart at Berkner Hall!

Miscellaneous

FIREWOOD - cured hardwood, over half cord, \$90. Tom, Ext. 4507 or 878-1060.

HATS - women's, vintage 1950s collection of seven hats, excel. cond., buy lot or separately, make offer. Diane, Ext. 2347.

TODDLER SWING & SLED - like new, \$10/ea. Arlene, Ext. 3827.

TUITION WAIVER - Dowling College, good for 3 undergrad. credits, \$850. Tom, Ext. 5899.

Free

66 FORD MUSTANG - a/t, parts, does not run. John, Ext. 4028.

Wanted

CARETAKER - p/t, for elderly woman with Parkinson's disease, light housekeeping, Moriches condo. Anita, 874-3606.

CELL PHONES FOR SENIORS - BNers have given 63 phones to date, thank you! But we know there are more out there. Collection boxes are at Brkhvn. Center, the P.O., & Berkner, or call Karen Adelworth, Ext. 4262.

MOUNTAIN BIKE - for my little brother, in good shape, inexpensive. Rich, Ext. 7013.

SKIERS - to ski Bellayre, 2/5, \$43 for bus & lift, send payment to Augie Hoffmann, Bldg. 510A.

TRAINS - Lionel, American Flyer & others, cast metal toys, high cash paid, also have some sets for sale. Bruce, 924-4097.

TV - 20" or larger, for video games. Bill, Ext. 2906 or 929-6189.

Community Involvement

LONGWOOD H.S. ROBOTIC CLUB - needs creative minds to assist with electrical, pneumatic, & control systems. www.longwoodrobotics.org. Deb Lang, 875-4051.

For Rent

EAST MORICHES - 4-5 bdrm house, l/rm, d/rm, park-like grounds, walk to all, gar., sunroom, basement, fresh paint, carpet, wood floors, Westhampton H.S., avail. mid-Feb., \$2,000/mo. Nick, Ext. 103 or Ext. 4979 or Anna 878-3352.

EAST MORICHES - 1 bdrm. apt., lg. rms., sunny, lovely area, walk to shops, marina, new kitchen, paint, wood floors, avail. mid Feb., \$900/mo. Nick, Ext. 4979.

EAST MORICHES - share spacious house w/ professional. Own large bdrm w/cable & phone, 10 mi. to Lab, quiet, 300 ft. to water. 744-8386.

EAST SETAUKET - 5-bdrm, 3 baths, 3 levels house, sliding doors leading to wrap-around, deck cul-de-sac, all hardwood floors, 2½ car garage, 3 VSD, excel. neighborhood, 689-6495.

MASTIC BEACH - 4 bdrm., 2 bath, l/rm., country kit., d/rm., laundry room, detached garage, city water, oil, hot water heat, \$1,400/mo. plus util. Bob, 281-6551.

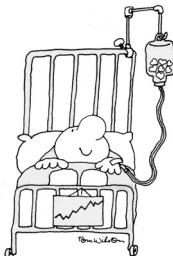
NORTH SELDEN - 1 bdrm., l/rm., kitch., full bath, w/d, \$850 plus sec., ref., 15 min. from Lab. ALSO: 3 bdrm., l/rm, d/rm, eik, full bath, h/w floors, deck, priv. house, 15 min from Lab., \$1,750/mo. Helen, Ext. 6235 or 928-7107.

PORT JEFFERSON VILLAGE - studio apt., walk to station, full bath/kitch., no smoking/pets, \$800 incl. all, 2 mo. sec., avail. 2/1. Dawn, 474-2885 or 516-650-4284.

ROCKY POINT - 1 bdrm. cottage, kitch., l/rm, bath, suitable for single, no pets, 1 mo. sec., \$995/mo. plus util. Claire, 744-5282.

ROCKY POINT - a lg. studio apt. w/sep. ent., \$500/mo. incl. util., avail. immediately until May 31. Walter, 821-5845.

RONKONKOMA - lg. 1 bdrm., l/rm, kitch., full bath, apt. well lit, new windows, ceiling fans, own thermostat, util. and cable incl., non smoker, no pets, 5 min. to LIE or train station, \$850 plus 1 mo. sec. 588-0180.



SHIRLEY - 2 bdrms., 1 bath, unfurnished apt., close to Lab, incl. heat & electric, \$1,500 neg. Tomasz, Ext. 7448.

STONY BROOK - 3 bdrm, 2 bath, l/rm, d/rm, eik, office, sunroom, all h/w & ceramic tile floors, lg. backyard, priv. beach, 3-Village Schools, mint cond., \$2,000/mo., avail. March 1. Irina, Ext. 3776 or 689-0475.

ST. CROIX, VI. - timeshare, Divi Carina Bay, 1 bdrm., sleeps 4, May 10-May 17, new upper unit overlooking ocean, private Pad casino, top rated, \$700. Bill, 732-9102.

For Sale

SHIRLEY - single-family 8-room ranch, 4 bdrm, 2 bath, oil h/w heating, detached frame construction, p/f full basement, lot 102x218, det. 5-car gar., 2 outbldgs., 100 sq. ft. ea., mint. \$299,900. Ken, Ext. 5110 or 4550.

SMITHTOWN - 3 bdrm. ranch, l/rm, d/rm, eik, 3 baths, full finished basement, studio apt., vinyl/brick, ½ acre, IGS, alarm system, quiet ent. to cul-de-sac, \$365,000. Brian., 584-3656.

TIMESHARE - Trapp family Lodge guest houses, Stowe Vermont, 2 float weeks, 2 bdrms., 2 baths, sleeps 6, \$3,295/ea. 298-4117.

TIMESHARE CONDO. - Ft. Lauderdale, FL. RCI Gold Crown Resort, world class golf/fitness center/spa, 3 br. lockout, sleeps 8, week 51, trades for 2 weeks w/1 fee, \$8,000. Ken, 281-5565.

Happenings

ART SHOW -Nick Weih's paintings (boats, trees, etc.) in 2-man show, Pt. Jeff. Art Gallery, 116 E. Main St., Feb. 1-16, Wed., Fri. eves. 6-9 p.m.; Sats., Suns., 11 a.m.-7 p.m.

CAMERA CLUB MTG - 2/5, Berkner Hall, Room D, noon - 1 p.m. Ripp Bowman, Ext. 4672.

CELIAC LUNCH GROUP - meeting weekly for sharing info., support, recipes, area events & gluten-free food. Michael, Ext. 8612 or 395-5071.

In Appreciation

I thank all of you who have sent prayers and words of encouragement following the recent passing of my father.

— Ron Webster and family



Send a Love Note To Your Valentine

Is there a special message you'd like to send to your valentine? Are you looking for a valentine? You can have your Valentine's Day message printed in The Bulletin on February 14. Send your 15-to-20-word "love note" to The Bulletin, Bldg. 134, by Monday, February 3. Use a Sales & Notices bulletin classified ad form, marked "Valentine." You must sign your name and include your life number and extension, but your name will not be printed unless it is clearly part of the message. Copy must be deemed tasteful. All messages will be accepted at the Bulletin's discretion. Only one message per employee, please.

