

BNL Helps Analyze Grid Failure

Scientists at BNL were already working with DOE on ways to improve the reliability of electrical energy distribution when the lights went out over much of the northeast on Thursday, August 14, 2003. Now these scientists have offered their services to DOE to help assess what happened that day and to offer suggestions for the future of the nation's electrical distribution system, known as "the grid."

"We've been trying to develop methods that can better handle the complex systems and higher demand of the future grid," said Robert Bari, who leads this work with Ali Azarm and Meng Yue in the

Energy Sciences & Technology Department.

Some of their research was aimed at designing new network segments to replace systems destroyed by the collapse of the World Trade Center on September 11, 2001. "We've been focusing on a typical substation design," said Bari, "but the things we're learning apply to the bigger national picture as well." Thus far, a probabilistic model has been developed by BNL to understand the relative contributions of communication networks and typical substation configuration characteristics to the reliability of the electrical network.

One major change from systems like New York City's — which Bari said was envisioned in the 1930s, when getting power to tall buildings like the new Empire State Building was the biggest concern — is the increasing reliance on digital communication infrastructure for protection and monitoring of the power distribution network.

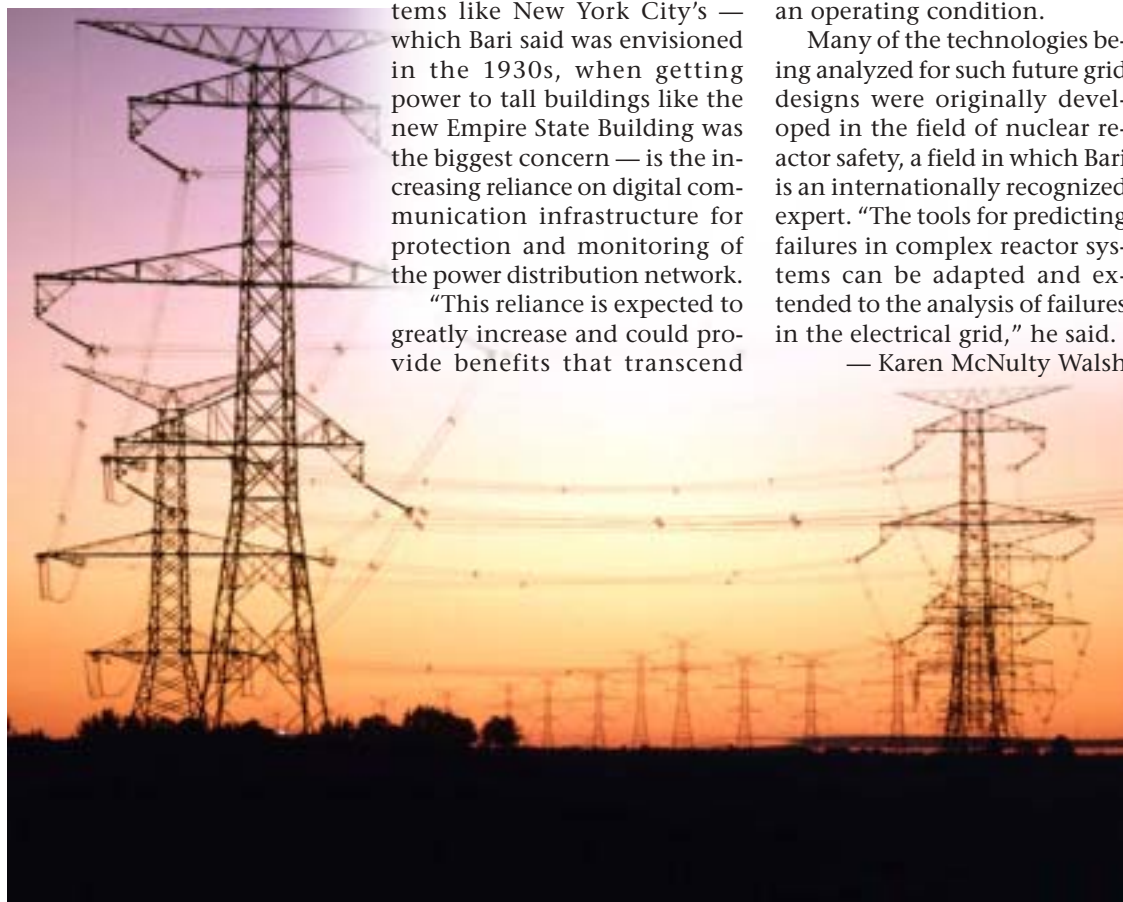
"This reliance is expected to greatly increase and could provide benefits that transcend

each individual utility," said Bari. These changes could also provide challenges to preserving the availability and reliability of the grid, he added. Research is therefore needed to understand these challenges and potential benefits more fully.

For example, communication networks can help to monitor, control, and protect electrical energy transmission networks so that systems do not get overloaded and lead to cascading failures such as that which occurred on August 14. Such a "smart" transmission network would be "self-healing," Bari said. A self-healing network would quickly assess a malfunction and restore the system to an operating condition.

Many of the technologies being analyzed for such future grid designs were originally developed in the field of nuclear reactor safety, a field in which Bari is an internationally recognized expert. "The tools for predicting failures in complex reactor systems can be adapted and extended to the analysis of failures in the electrical grid," he said.

— Karen McNulty Walsh



Nine Brookhaven Scientists Awarded Tenure

Brookhaven Science Associates granted tenure on June 1 to nine Brookhaven scientists. They are: Mark Baker, Chemistry Department; Leslie Bland, Physics Department; Christopher Homes, Physics; Jean Logan, Chemistry; Ron Pindak, National Synchrotron Light Source Department; David Schlyer, Chemistry; Subramanyam Swaminathan, Biology Department; Dejan Trbojevic, Collider-Accelerator Department; and Gene-Jack Wang, Medical Department. The Bulletin is featuring a description of the accomplishments of each of these tenured scientists over several weeks.

David Schlyer

For his outstanding contributions to targetry development for nuclear medicine isotope production, his original research in developing specialized instrumentation for positron detection and imaging in animal and human subjects, and the key role that he plays in BNL's Positron Emission Tomography (PET) group, Chemist David Schlyer of the Chemistry Department was awarded tenure.

"David's work on cyclotron targetry is particularly creative and noteworthy," said Jan Hrbek, then Acting Chair of Chemistry. "There are few, if any, scientists in the world who do such fine targetry development and who can also do the fundamental nuclear, chemical, and engineering calculations needed to support it. As a chemist, Dave appreciates the chemistry that occurs within the targets. At the same time, he has a

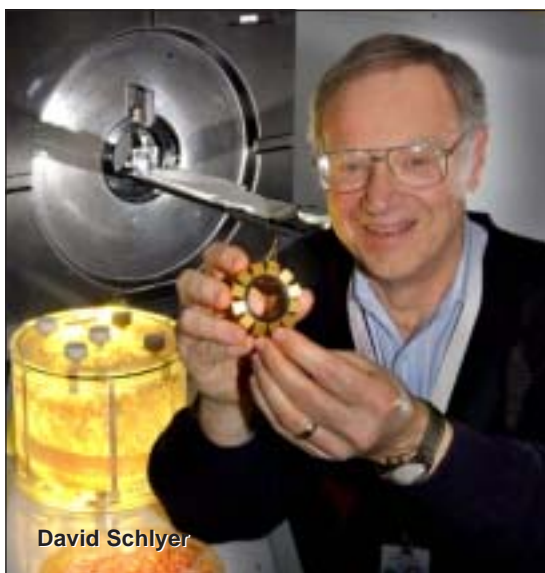
unique understanding of biology and medicine, and the mathematical ability that permits him to model processes occurring on target walls, as well as in compartments in living systems."

Schlyer has made valuable observations in measuring excitation functions of fundamental importance in developing targets for medical radioisotope production.

Schlyer has also developed methods for recovering ^{18}F fluoride and ^{18}O -enriched water after bombardment, now used by a

majority of ^{18}F -producing institutions worldwide. For PET in particular, this is an important contribution due to the cost and shortages of ^{18}O -enriched water needed for PET research.

(continued on page 2)



David Schlyer

Roger Stouffer/burgh portraits

Lessons Learned

2003 Northeast Blackout

"On Thursday, August 14, BNL had the unfortunate 'opportunity' to participate in the 2003 Northeast Blackout. Fortunately for all of us, no Lab employees, guests, or visitors were injured and damage around the site was minimal. We also learned a number of lessons from this event."

— John Searing
BNL Fire Chief

1. Local Emergency Coordinators (LECs)

Each building has a primary and an alternate local emergency coordinator (LEC). LECs are key personnel who should account for everyone and make sure that the building is safe. In the event of a local incident, BNLeers should turn to the LEC in their work area for current information and for instructions on how to proceed given the particular situation. 911 should be called for any emergency. As an emergency situation progresses, emergency personnel will keep all LECs informed of pertinent information regarding the emergency. For a list of LECs, go to <http://intranet.bnl.gov/emergency/services/runcards/lec.asp>.

2. Plectrons

Information from emergency personnel will often be distributed site-wide by plectron announcement. The plectron is a one-way radio device that can sound an audible alert tone followed by a voice message. It is the LEC's responsibility to ensure that the plectron in his or her building is working properly. BNL plectrons are tested each Monday at noon. All plectrons have a battery backup, which allows them to function in the event of a power loss. BNL's Emergency Services Division will be replacing all plectron batteries over the next few months. LECs will be informed of the details.

3. Turn it off before leaving

In any emergency — regardless of whether it is power-related — when employees are asked to leave the site, BNLeers should turn off all nonessential equipment, including lights, in their work area before leaving. Sensitive electrical equipment such as computers and other electronic devices, which are particularly susceptible to power-surge damage, should be unplugged. When the power was turned back on following the recent blackout, LIPA was only able to allot BNL approximately 50 percent of the Lab's normal power consumption. As buildings came back on line, many nonessential loads powered up, bringing the Lab very close to its allocated consumption limit.

4. 344-INFO

BNLeers should check the Lab's information line, 344-INFO (4636), before returning to work after any type of power outage, storm, or incident in which employees were asked to leave the site. The information line provides instructions regarding the Lab's opening time and return to normal operations.

5. Conventional telephones

Upon returning home on the day of the blackout, many BNLeers found that they could not use their home telephones to communicate. This was not because telephone lines were out, but because many phones — especially those with built-in answering machines — require a 110-volt external power supply to operate. To ensure being able to communicate by telephone during a power outage, BNL Emergency Services recommends that everyone have one "old-style" phone in the home that does not require an external power source.

Additional Lessons Learned are being identified by the Emergency Services and Plant Engineering Divisions. Those lessons will be implemented over the next several months, and will appear in a future issue of the Bulletin.

— John Galvin

Image of the northeast United States taken by the Defense Meteorological Satellite Program approximately seven hours after the 2003 Blackout. Image courtesy of the Air Force Weather Agency.

Calendar of Laboratory Events

- The BERA Sales Office is located in Berkner Hall and is open weekdays from 9 a.m. to 3 p.m. For more information on BERA events, contact Andrea Dehler, Ext. 3347; or Chris Carter, Ext. 2873.
- Additional information for Hospitality Committee events can be found at the Lollipop House and the laundry in the apartment area.
- The Recreation Building (Rec. Hall) is located in the apartment area.
- Contact names are provided for most events for more information.
- Calendar events flagged with an asterisk (*) have an accompanying story in this week's Bulletin.

— EACH WEEK —

Weekdays: Free English for Speakers of Other Languages Classes
Beginner, Intermediate, and Advanced classes. Various times. All are welcome. Learn English, make friends. See www.bnl.gov/esol/schedule.html for schedule. Jen Lynch, Ext. 4894.

Mon., Tues., & Thurs.: Kickboxing
\$5 per class. Mon. & Thurs. noon-1 p.m. in the gym; Tues., 5:15-6:15 p.m. in the gym; Thurs., 5:15-6:15 p.m. in Brookhaven Ctr. Registration is required. Christine Carter, Ext. 2873.

Mon., Thurs., & Fri.: Tai Chi
Noon- 12:45 p.m., Brookhaven Center North Room. Adam Rusek, Ext. 5830 or rusek@bnl.gov.

Mondays: BNL Dance Club Individual & Couples Instruction by Mark James
5-6 p.m. and 7-11 p.m. North Ballroom, Brookhaven Center, except Lab holidays. Ron Ondrovic, ondrovic@bnl.gov or Ext. 4553.

Mondays: BNL Dance Club Supervised Practice with Instructor Mark James
Free, 6-7 p.m. North Ballroom, Brookhaven Center, except Lab holidays. Ron Ondrovic, ondrovic@bnl.gov or Ext. 4553.

Tuesdays: Welcome Coffee
10-11:30 a.m. Rec. Hall. Hospitality event. Come and meet friends. The first Tuesday of every month is special for Lab newcomers and leaving guests. Hospitality Chair Monique de la Beij, 399-7656.

Tuesdays: BNL Music Club
Noon, North Room, Brookhaven Center. Come hear live music. Joe Vignola, Ext. 3846.

Tuesdays: BNL Dance Club Individual & Couples Instruction by Patti Panebianco
5-11 p.m. North Ballroom, Brookhaven Center, except Lab holidays. Ron Ondrovic, ondrovic@bnl.gov or Ext. 4553.

Tuesdays: Singles Club
5:15 p.m., Brookhaven Center. Contact: Jean, Ext. 4391.

Tuesdays: BNL Dance Club Individual & Couples instruction
5-11 p.m. North Ballroom, Brookhaven Center. Ron Ondrovic, ondrovic@bnl.gov or Ext. 4553.

Tuesdays: Toastmasters
1st and 3rd Tuesday of each month, 5:30 p.m., Bldg. 463, room 160. Guests, visitors always welcome. www.bnl.gov/bera/activities/toastmasters/default.htm.

Tuesdays & Thursdays: Aerobics
5:15-6:30 p.m., \$4 per class. Rec. Hall. Pat Flood, Ext. 7886.

Tuesdays & Thursdays: Aqua Aerobics
5:15-6:15 p.m. Christine Carter, Ext. 2873.

Wednesdays: On-Site Play Group
10 a.m.-noon. Rec. Hall. An infant/toddler drop-in event. Parents meet while children play. Svetlana Agafonova, 205-5065.

Wednesdays: Farmer's Market
11:30 a.m.-1:30 p.m., Berkner Hall parking lot

Wednesdays: Weight Watchers
Noon-1 p.m. Michael Thorn, Ext. 8612.

Wednesdays: Yoga Practice
Noon-1 p.m., Brookhaven Center. Free. Ila Campbell, Ext. 2206.

Wednesdays: Open Chess Night
5-8 p.m., Rec. Hall. Christine Carter, Ext. 5090.

Wednesdays: Exercise 101
5:15-6 p.m., Rec. Hall. \$4 per class or \$35 for 10 classes. Stretching, low-impact aerobics, and other exercises. Pat Flood, Ext. 7886.

Wednesdays: BNL Dance Club Group Instruction w/Mark James, Stephanie Falciano, Michael Pagan, Patti Panebianco
6-7, 7-8, and 8-9 p.m. North Ballroom, Brookhaven Center. Marsha Belford, belford@bnl.gov or Ext. 5053.

- series 1 w/U.S. Theatre Champion Mark James (9/17-11/5)
- series 2 w/U.S. Rhythm Champion Stephanie Falciano (11/12-1/21)
- series 3 w/Club-style specialist Michael Pagan (1/28-3/24)
- series 4 w/Latin & Rhythm Champion Patti Panebianco (3/31-5/26)

Fridays: Family Swim Night
5-8 p.m. at the BNL Pool. \$5 per family.

Fridays: BNL Social & Cultural Club
6-9 p.m. North Ballroom, Brookhaven Ctr., dance lessons, 9-11:30 p.m. general dancing. Rudy Alforque, Ext. 4733, rudy@bnl.gov.

Fridays: Jiu Jitsu Club
6-7 p.m. in the gym. All levels, ages 6 and above. \$10 per class. Tom, Ext. 4556.

— WEEK OF 9/1

Monday, 9/1

BNL closed for Labor Day Holiday
Cafeteria open Sat. 8/29-Mon. 9/1, 7:30 a.m.-2 p.m. Brookhaven Center Grill open Sun. 8/31 & 9/1, 5-9 p.m.

Tuesday, 9/2

U.S. Open Tennis Trip
\$62 per person. Rita Kito, Ext. 3320.

***Caring Friends Meeting**
Noon, Berkner Hall, Room D. See notice, page 3, top. All are welcome.

Director's Safety Committee Established

“Our vision is that the BNL community together will achieve and sustain an injury-free, healthy, and safe workplace for all employees, visitors, and contractors.”

This vision statement was developed by members of the newly formed Director's Safety Committee (DSC), which is chaired by Lab Director Praveen Chaudhari.

The idea of a DSC came out of a DuPont benchmark safety leadership workshop held at BNL in March. Its primary function is to provide safety leadership at the management level and lead the Lab on the path to safety excellence. The DSC is made up of Deputy Directors, Associate and Assistant Laboratory Directors, and four employees: Stephen Shapiro, Physics Department; Lawrence Vogt, Collider-Accelerator Department; Bruce Penn, Budget Office; and Phil Pizzo, Plant Engineering Division, to represent the scientific, technical, and administrative staff and bargaining units, respectively.

Says Chaudhari, “We recognize that employee involvement is vital to the success of excellent safety programs, so, while we provide management leadership, we



Four members of the newly established Director's Safety Committee chaired by Lab Director Praveen Chaudhari are: (from left) Lawrence Vogt, Collider-Accelerator Department, who represents the technical staff; Bruce Penn*, Budget Office, to represent administrative staff; Stephen Shapiro, Physics Department, to represent the scientific staff; and Phil Pizzo, Plant Engineering Division, who represents the Lab's bargaining units. Other members are the Deputy Directors and Associate and Assistant Laboratory Directors.

**Bruce Penn was photographed separately and added to this photo.*

will also provide avenues for direct employee involvement. This will give additional value to the planning, implementation and continuance of improved safety practices.”

As technical staff representative on the DSC, Vogt says, “I will work hard as a liaison between management and employees. I see this as an excel-

lent opportunity for the entire BNL community to work together and reap the benefits of a strong commitment to safety.”

Pizzo adds, “I am pleased that our new director is so serious about establishing a safe workplace that he has endorsed greater employee involvement in work planning and injury prevention.”

Grand Poster Session Concludes 10 Weeks of Mentored Research For BNL's Office of Educational Programs' Summer Students



(From left) Ed Bell, from the Pre-Service Teachers (PST) program; with Jose Perez, a Community College Institute (CCI) student; Cheryl Brown, CCI; a BNL onlooker; and Leonard Luxama, a Science Undergraduate Laboratory Internship student.

A buzz of lively conversation filled the air on Thursday, August 7, as students, mentors, and interested BNLers explained, appreciated, and learned from several rows of posters set up in Berkner Hall lobby. The posters showcased scientific or technical results of work done by student participants of four summer programs run this year by the Office of Educational Programs (OEP): Community College Institute (CCI), Faculty & Student Teams (FaST), Pre-Service Teachers (PST), and the Science Undergraduate Laboratory Internship (SULI). Each program offers a group of student interns the opportunity of spending ten weeks in directed research and educational training at BNL.

David Schlyer Awarded Tenure

In 1976, after receiving a Ph.D. in inorganic chemistry jointly from the University of California at San Diego and San Diego State University, Schlyer joined BNL's Chemistry Department. Until 1981, he worked on the reaction kinetics of atomic species and coal oxidation.

After leaving the Lab to spend four years in working on cyclotrons in California and setting up a radioisotope production and research program in Saudi Arabia,

Schlyer returned to BNL in 1985. His expert knowledge of cyclotrons, devices that accelerate particles in a specialized way, makes him nationally and internationally sought after as a consultant by many institutions, including the International Atomic Energy Agency (IAEA).

Also for the IAEA, Schlyer participates in a research program to bring the production technology for several radiotracers to developing countries, and he edits

the *Compendium of World Cyclotrons*. He holds or co-holds four patents.

— Liz Seubert



Helping the DSC fulfill its mission will be the Safety Improvement Team initiated in April by Thomas Sheridan, Deputy Director for Operations, and Otto White, Safety & Health Division Manager. This team is charged with formulating a strategic plan to make BNL a safer workplace for all employees, visitors, and contractors. Chaired by Steven Hoey of the Environment, Safety, Health, and Quality Directorate (ESH&Q), the team includes employees from various departments.

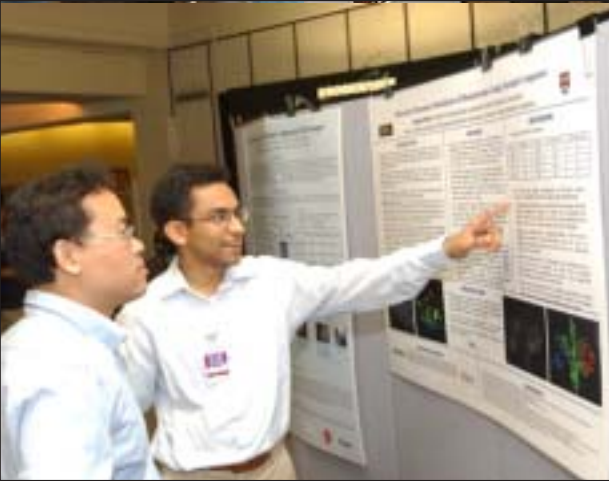
Says Hoey, “This team will offer safety recommendations for approval by the DSC. This is a positive step for future safety and health programs at BNL.”

White adds, “The key to improved and sustained safety is visible management and worker involvement.”

James Tarpinian, Assistant Laboratory Director of ESH&Q, concludes, “I believe that through initiatives like these, BNL can become a model of safety excellence.”

All employees are encouraged to make safety suggestions and recommendations. Send your ideas to Steven Hoey, Bldg. 120, or hoey@bnl.gov.

— Jane Koropsak



Anshul Shah (right), Science Undergraduate Laboratory Internship student, explains his poster to a Lab viewer.



(From left) Krista Feierabend, Pre-Service Teachers (PST) program, with BNL retiree Red Carsten; Sara Gonzalez, Science Undergraduate Laboratory Internship (SULI); Marc McGuigan, SULI; BNL mentor Helio Takai; and Tara Falcone, PST.

After the poster session, the successful completion of this year's work was celebrated in a closing ceremony attended by Lab Director Praveen Chaudhari.

Said Melvyn Morris, OEP's PST Program Manager, “Thanks to the outstanding support of Lab staff who act as mentors, the OEP-program students get a unique chance to experience ‘hands-on science’ in a wide range of fields. Many students have participated to the extent of being named as contributors to scientific journal articles or BNL reports, and all gain a deeper understanding of the excitement and effort that is part of scientific and technical research.”

— Liz Seubert

Arrivals & Departures

Arrivals

Robert Konik Physics
Maria Ohlsen ... Finance & Admin.
Vasilii Shelkov Physics

Departures

Mahalingam Balasubramanian Mat. Sci.
Maria Bewley Biology
Tatsuya Chujo Physics
Michael Davids Plant Eng.
George Gifford Env. Rest.
Phillip Servio ES&T
Douglas Warren Waste Mgmt.

BNL Retirees — Stay in Touch!

Send Us Your E-Mail Address

The Community, Education, Government & Public Affairs (CEGPA) Directorate publishes communications such as the Monday Memo and the Bulletin and coordinates the Lab's community outreach program and scientific educational events. There are often occasions when CEGPA would like to make contact with interested retirees, for example, to get input on communications issues, or to ask if any retirees would like to give a hand with a particular Lab/community activity. If you would like to be on a list to receive such messages, send your personal e-mail address to bulletin@bnl.gov, with Retiree Address as the subject of the e-mail.

Try the Announce News Service

Retirees who have e-mail at home and would like to get press releases and reminder notices about concerts, lectures, and other Lab functions should subscribe to BNL's "Announce" news service (see notice below). Usually, these events have been already advertised in the Bulletin mailed to all retirees who request it, but "snail-mail" often arrives too late for the event.

See the Bulletin on the Web

Remember, anyone who is able to go on the World Wide Web, in the local library if not at home, can see the latest Bulletin when it is posted on the Friday of publication — go to <http://www.bnl.gov/bnlweb/pubaf/bulletin.html>.

View the Weekly Calendar on the Web

Those interested in attending scientific and technical seminars and lectures may want to access the Weekly Calendar for these events, found at <http://www.bnl.gov/bnlweb/pubaf/calendar.html>.

Sign Up for Monday Memo

Another important way to stay in touch is by arranging to receive the Monday Memo, an e-mail management newsletter that is sent out every second Monday, with a message from the Lab Director and short articles by scientists and administrators. See the notice below to find out how to subscribe to this publication, which also encourages readers' questions and comments that can be kept anonymous at the sender's request.

Get Announcements by E-Mail

- To receive the Monday Memo, go to <http://lists.bnl.gov/mailman/listinfo/mondaymemo-l> on the Web and follow subscription instructions
- To receive the Announce news service, go to <http://lists.bnl.gov/mailman/listinfo/bnl-announce-l> and follow subscription instructions

BERA Softball Party, 9/25

All softball players and guests are invited (adults only please) to the annual BERA Softball League party, which will be held on Thursday, September 25, from 6 to 10 p.m. at the East Wind Caterers in Wading River. Tickets are \$25 per person for the first 100 paid softball players — who must be on a team roster — and \$40 thereafter for softball players and guests. Purchase tickets at the BERA Sales Office by Friday, September 19. If the minimum number of tickets has not been sold by 9/19, then the party will be cancelled and ticket money will be refunded. No tickets will be sold after 9/19, so buy tickets early. For more information, e-mail softball@bnl.gov.

'Learn to Be Tobacco Free' Smoking Cessation Program at BNL, 9/9

The Occupational Medicine Clinic's Health Promotion Program is sponsoring an on-site smoking cessation program entitled "Learn to Be Tobacco Free," which is presented by the Suffolk County Department of Health Services and demonstrates a success rate of over 60 percent. The program will run for six consecutive weekly sessions from noon to 1 p.m. in the small conference room in Bldg. 490 beginning on Tuesday, September 9. To register, contact Michael Thorn, Ext. 8612, or mthorn@bnl.gov.

Step Into Fall — New Fitness Program For first 250 registrants only, 9/8, 9/9, 9/10

Step into Fall is a new walking program organized by Health Promotion Program Coordinator Michael Thorn of the Human Resources & Occupational Medicine Division. The program is designed to help everyone, regardless of current activity level. Those who "step into fall" will take a goal of eventually walking about four-and-a-half to five miles a day, using a pedometer to count their steps. Pedometers will be provided at a discount price of \$6 each. For more information, on September 8, 9, and 10, from 11:30 a.m. to 1:30 p.m., go to Berkner Hall, Room C, where you can get full details. You can bring a check for \$6 made out to BERA for your pedometer and instructions on how to use it. You will also get your log sheet for the program. Registration is limited to the first 250 participants who register and pay for a pedometer. Incentives will be provided during the program, and two drawings will be held for prizes for those who complete and submit the log of their activities.

Caring Friends

A support group is forming to serve as a resource for individuals experiencing grief and the many emotions following the loss of a loved one. Says Susan Foster, Employee Relations Manager, "This group is comprised of individuals who are journeying through the process of a life-changing experience. Informal gatherings will occur on the first Tuesday of each month at noon in Berkner Hall, Room D. Please join us." For more information, call Pat Hein, Ext. 3962, or Gerry Van Derlaske, Ext. 3476.

Donate School Supplies

Today is the last day to donate to BERA's school-supply drive to help local children in need. Drop off any kind of school supply at the BERA Sales Office or Quality of Life Office, Bldg. 179.

Noon Lab Tour, 9/12

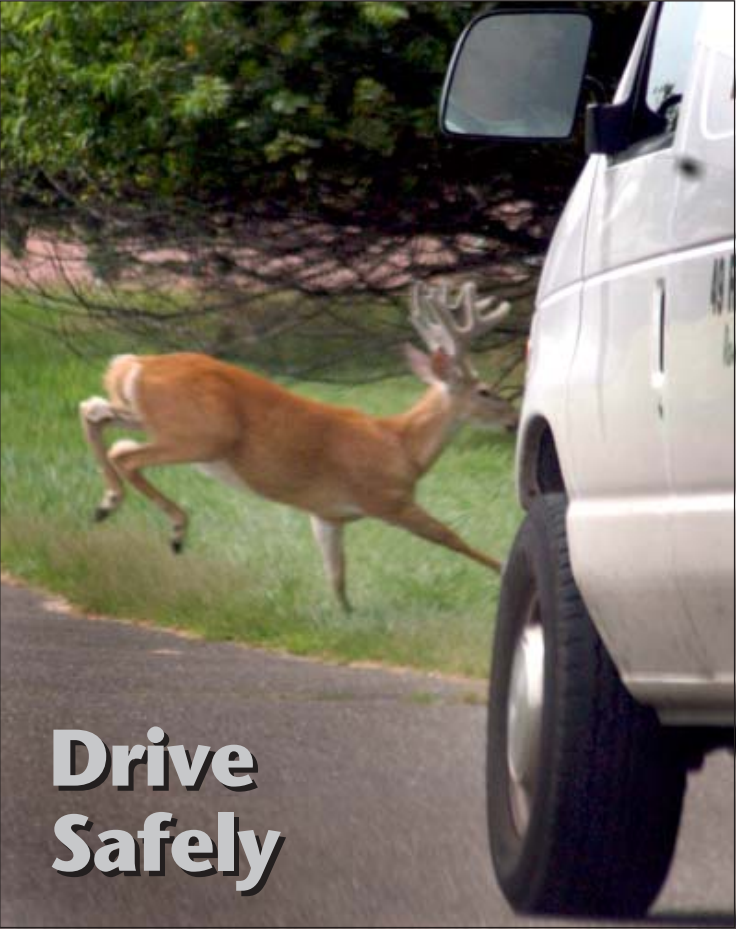
See a STAR! All are welcome to join a group to see the STAR detector at the Relativistic Heavy Ion Collider on Friday, September 12. Meet at noon in the lobby at Berkner Hall. The group will go by Lab bus to learn about STAR, returning by 1 p.m.

Credit Union Update

BNL employees are eligible to join the Teachers Federal Credit Union (TFCU), which has a branch on site and other branches locally. Along with competitive loan and savings rates, TFCU offers:

- free checking, no minimum balance; free Visa Check Card
- direct deposit for paychecks
- an ATM in the cafeteria exterior lobby with no service charge for TFCU members
- membership eligibility for immediate family members

To open a TFCU account, stop by the branch located at Bldg. 193, 2 South Technology Street, or any other branch. A \$50 savings account deposit and two forms of identification are all that is needed to join. For more information, call TFCU at (631) 698-7000 and press 0, or go to www.teachersfcu.org.



Roger Stouenburgh D566003

Coming Up

In Berkner Hall

BSA Noon Recital, 9/17

Noon performance by Argentine pianist Mirian Conti.

Brookhaven Lecture, 9/17

At 4 p.m. , Lab Historian Robert Crease will talk on elegant science experiments.

Pegram Lectures, 9/22,23

9/22: 5 p.m.; 9/23: 11 a.m. and 4 p.m., George Whitesides, Harvard University, will give a series of three talks on "Nanoscience: Status and Prospects."

Retirement Counseling Fidelity Investment, 9/4

A Fidelity representative will be at the Lab on Thursday, September 4, to hold sessions with individual employees interested in learning more about their retirement-savings and investment options. Schedule one of the 45-minute appointments by calling (800) 642-7131.

TIAA-CREF, 9/10, 9/17

A TIAA-CREF representative will visit BNL on two Wednesdays, September 10 and 17, and Friday, September 19, to answer employees' questions regarding the TIAA-CREF retirement plan, such as TIAA and CREF differences, allocating funds between TIAA and CREF, options, flexibilities with TIAA-CREF, and retirement options. For a 45-minute appointment, call Valerie James, (800) 842-2733, Ext. 7980 (not the Lab Ext. 7980).

Money Talks Workshop, 9/18

Changes in Social Security, additional choices, and the impact of inflation over time are just some of the factors to consider when evaluating your retirement plan. To focus on steps to take today to ensure financial security during retirement, join TIAA-CREF on Thursday, September 18, at noon in Berkner Hall where they will present a mid-career workshop on retirement planning. Check your mailbox for registration forms, which should be completed and returned to Joyce Wund, Bldg. 185, by Friday, September 5.

Calendar

(continued)

Thursday, 9/4

***Retirement Workshop**
Noon, Berkner Hall. "Getting Started on Your Retirement," presented by Fidelity Investments. Joyce Wund, Ext. 7516.

Saturday, 9/6

***Cycletrons 6th Annual Family Picnic**
Noon at the gazebo by the softball fields. \$5 per adult and children over 12. All are welcome. See notice, page 4. Frank Dusek, Ext. 2022

— WEEK OF 9/8

Tuesday, 9/9

Upton Nursery School Start-up
9 a.m.-noon. Tuesdays, Thursdays, Rec. Hall. Cathy Lavelle, 36903098 or lavellec@bnl.gov.

Wednesday, 9/10

Blood Drive
9:30 a.m.-3 p.m., Brookhaven Center. See notice, page 4. To make an appointment, contact Susan Foster, Ext. 2888, or donateblood@bnl.gov.
Verizon Wireless Demo
11 a.m. - 2 p.m., Berkner Hall. A representative will present special rates, including a 17 percent discount on monthly access to BNLers. Harry Campbell, 516-458-9122.
Rifle & Pistol Club Meeting
Noon, Conference Room, Bldg. 535. Jim Durnan, Ext. 5993, or www.bnl.gov/bera/activities/tpc/.

Thursday, 9/11

Community Advisory Council Meeting
6:30 p.m., Berkner Hall, Room B. Open to the public. For more information, see <http://www.bnl.gov/community/CAC.htm>.

Friday, 9/12

***Lunchtime Tour of STAR**
Noon. Learn about RHIC's STAR detector. See notice at left, this page.

Sunday, 9/14

***Bus Trip to Lincoln Center Craft Show**
\$10 per person. See 400 displays of American crafts from all over the U.S. There will be food, music, craft demonstrations, and free time in New York City. Bus leaves BNL at 10 a.m. and departs NYC at 5 p.m. Tickets: BERA Sales Office. Christine Carter, Ext. 5090.

— WEEK OF 9/15 —

Tuesday, 9/16

***BNL Dance Club Individual & Couples Instruction w/Patti Panebianco: start of 2003-04 dance lessons**
5-6, 6-7, 7-8, 8-9, 9-10, 10-11 p.m. North Ballroom, Brookhaven Center. Ron Ondrovic, ondrovic@bnl.gov or Ext. 4553.

Wednesday, 9/17

BSA Noon Recital
Noon. Argentinian pianist Mirian Conti will play.
Brookhaven Lecture
4 p.m. Lab Historian Robert Crease on elegant science experiments.
***BNL Dance Club Group Instruction w/ Mark James, Stephanie Falciano, Michael Pagan, Patti Panebianco: start of 2003-04 dance lessons**
6-7, 7-8, and 8-9 p.m. North Ballroom, Brookhaven Center. Marsha Belford, belford@bnl.gov or Ext. 5053. Register ASAP for series 1 (9/17-11/5) w/ U.S. Theatrical Champion Mark James
• 6-7 p.m. INTRODUCTION Ballroom 101: lindy, swing, jive, West Coast swing (2 weeks of each dance, beginner) \$30/person/8 weeks
• 7-8 p.m. SYLLABUS mambo & merengue level III (4 weeks of each dance, intermediate) \$35/person/8 weeks
• 8-9 p.m. TECHNIQUE International tango (8 weeks of one dance, intermediate) \$40/person/8 weeks
• 5-6 & 9-10 p.m. EXTRA HELP individual and couples instruction

Thursday, 9/18

***Money Talks Workshop**
Noon, Berkner Hall. TIAA-CREF representatives present a mid-career workshop on retirement planning. See notice at left. Joyce Wund, Bldg. 185.

Note: This calendar is updated continuously and will appear in the Bulletin whenever space permits. Submissions must be received by the preceding Friday at noon to appear in the following week's Bulletin. Enter information for each event in the order listed above (date, event name, description, and cost) and send it to bulletin@bnl.gov. Write "Bulletin Calendar" in the subject line.

Classified
Advertisements

Placement Notices

The Lab's placement policy is to select the best-qualified candidate for an available position. Candidates are considered in the following order: (1) present employees within the department/division and/or appropriate bargaining unit, with preference for those within the immediate work group; (2) present employees within the Laboratory; and (3) outside applicants. In keeping with the Affirmative Action Plan, selections are made without regard to age, race, color, religion, national origin, sex, disability or veteran status. Each week, the Human Resources Division lists new placement notices, first, so employees may request consideration for themselves, and, second, for open recruitment. Because of the priority policy stated above, each listing does not necessarily represent an opportunity for all people. Except when operational needs require otherwise, positions will be open for one week after publication. For more information, contact the Employment Manager, Ext. 2882; call the JOBLINE, Ext. 7744 (344-7744), for a list of all job openings; use a TDD system to access job information by calling (631) 344-6018; or access current job openings on the World Wide Web at www.bnl.gov/HR/jobs/default.htm.

OPEN RECRUITMENT – Opportunities for Laboratory employees and outside candidates. **MK2500. POSTDOCTORAL RESEARCH ASSOCIATE** (reposting) – Requires a Ph.D. in civil, structural, or mechanical engineering with experience in non-linear finite element analysis of steel and reinforced concrete structure or components. Experience in calculating the response of structures subjected to impact loads and in using probabilistic-based analysis is desirable. Research will involve structural analysis computer codes that are used to predict the seismic and dynamic response of structure and structural components with the purpose of assessing the safety of existing or proposed nuclear plant facilities. Work will involve one or more of the following programs: a) comparing the results of various seismic analysis methods with data from large-scale seismic tests of reinforced concrete shear wall structures; b) performing impact analysis to assess the response of spent-fuel dry-cask systems and support structures to various cask drop scenarios; c) the analysis of nuclear power plant structures and components in support of safety issues being pursued by the U.S. Nuclear Regulatory Commission related to the licensing of proposed advanced reactors. Under the direction of C. Hofmayer, Energy Sciences & Technology Department.

MK8809. POSTDOCTORAL RESEARCH ASSOCIATE – Requires a Ph.D. in chemistry, physics, or material science with a background in thermodynamics of metal-hydrogen systems and a proven capability for independent research. Experience

in inorganic synthesis, crystallography, transmission electron microscope work and electron energy loss spectrometry will be a plus. Will take part in the development of reversible, complex metal hydrides as a hydrogen storage media for automotive applications. Under the direction of J. Wegrzyn, Environmental Sciences Department.

Motor Vehicles & Supplies

00 KAWASAKI VULCAN - 800cc, low mi., excel. cond., \$5,000. Frank, Ext. 4987 or 696-0183.

99 MERCURY COUGAR - a/t, a/c, p/w, p/l, black w/spoiler, V6, 46K, excel. cond., \$8,400. Ken, Ext. 4423 or 924-6893.

98 FORD ESCORT ZX2 - 5spd., a/c, p/s, p/b, Alpine XM digital satellite radio FM/CD, Infinity spkrs., excel. cond., 48K mi., \$4,700. Rob, Ext. 5161 or 917-865-9668.

97 HONDA DEL SOL - red, 5 spd., a/c, p/s, p/b, p/w, removable hardtop stows in trunk, gd. cond., 80K mi., ask. \$5,700. Bill, Ext. 2378 or 758-3284.

96 FORD EXPLORER - a/t, a/c, p/s, p/b, p/w, 25K mi. on new motor, 4x4, leather int., fully loaded, am/fm cass./CD player, well maint., \$4,300. Charlie, 728-0074.

95 CHEV S10 BLAZER - teal green, 4dr., 4wd, a/t, a/c, p/s, p/b, p/w, excel. cond., 106K mi., \$5,900. Ralph, 325-0145.

95 MOTORHOME/COACHMAN - rear kit., full-size bd. abv. cab, futon couch/bd., dinette/ bd. awning, a/c, heat, micro, refrig.-frzr., 23K mi., \$18,500. John, Ext. 7268 or 732-7568.

94 FORD MUSTANG - metallic blue w/spoiler, a/t, a/c, p/s, p/b, p/w, orig. owner, well maint., v. reliable, excl. cond., 136K mi., \$3,500. Tom, Ext. 5741 or 473-3760.

94 NISSAN SENTRA XE - red, 4dr., a/t, a/c, p/s, runs well, great fuel economy, 145K mi., must sell, \$1,800. Anna, Ext. 5341.

94 SAAB 900S - 4dr., hatchback, a/t, sun-roof, excel. body/mechanical, 122K mi., \$4,900. David, Ext. 2604 or 473-2473.

93 DODGE CARAVAN - 3.0 liter, V6, p/l, p/w, new Alpine radio, CD player & windshield, 82K mi., \$3,900. Mike, Ext. 5319 or 698-8028.

93 LINCOLN TOWNCAR - a/t, a/c, p/s, p/b, p/w, new tires & front brakes, gd. cond., 160,623 mi., \$2,100. Charlie, 728-0074.

92 INFINITI M30 -abs, a/t, a/c, p/s, p/b, p/w, c/c, p/seats, org. owner, leather, moonroof, v.g. cond. 109K mi., \$3,500. Herb, 928-0297.

91 ACURA INTEGRA GS HATCHBACK - a/t, a/c, p/b, p/w, 114K mi., \$2,800. Gary, Ext. 5355.

91 HONDA ACCORD LX WAGON - a/t, p/s, p/b, p/w, no a/c, reliable, SportsMode, 155K mi., \$3,000. Peggy, Ext. 3131.

91 HONDA CIVIC EX - blue, gd. cond., new tires, 125K mi., \$1,500. Stefan, Ext. 7394/3744 or 217-762-9007.

90 MAZDA 626 - white, 4dr., a/t, a/c, p/s, p/b, p/w, very clean, needs eng. work, 144K mi., best offer. Hugh, 924-7262.

90 SUBARU LOYALE WAGON- 4wd, 5 spd., p/s, p/b, reasonable cond., 175K mi., ask. \$1,200. Steve, Ext. 5323 or 744-3902.

89 DODGE DYNASTY - \$500, Louis, 878-0743.

89 VOLVO 240DL - 5spd. a/c, p/b, runs well, gd. cond., records avail., 211K mi., and \$1,500. Kathleen, Ext. 3926.

88 JEEP CHEROKEE LTD - 4 new tires, 135K org. mi. & owner, \$2,950. Michael, 325-0447.

85 PLYMOUTH VOYAGER - white, a/t, a/c, p/s, p/b, c/c, remote starter, 117K mi., \$2,000. Rich, Ext. 7013 or 698-5294.

84 CADILLAC SEVILLE - Roadster Edition, maroon w/white leather int., a/t, a/c, p/s, p/b, p/w, 109K mi., \$650. Scott, 345-2365.

79 CHRYSLER LEBARON - 2dr. classic, a/t, a/c, p/s, p/b, many new parts, runs well, perfect for restoration, \$1,500. Michael, Ext. 2050 or 281-2414.

Boats & Marine Supplies

20' JOHNSON CRUISER RUNABOUT - 115hp, full canvas incl., trailer, \$1,500. Louis, 878-0743.

Furnishing & Appliances

ALL HOUSEHOLD ITEMS - LR, DR, Kitchen, BR sets; 2002 32" Panasonic TV. Bob, 584-5206.

DEACON'S BENCH - solid pine w/maple finish, storage under seat, shaker-style back, like new, overall 56" wide, \$100. Kathleen, Ext. 3926.

DINING ROOM SET - maple, oval table 38x56, 2 leaves, 6 chairs, hutch w/9 drawers, 2 cupboards, "Moosehead", gd. cond., \$400. Kathleen, Ext. 3926.

HOUSEHOLD - dryer \$250; dishwasher \$150; brkfst. tbl. w/2 stools \$50; sectional sofa \$300. Prices neg. Patriche, 286-9220.

MICROWAVE - Sanyo, 20"W x 13"H x 15.5"D, \$25. Jeff, Ext. 2959.

OVEN - GE TrueTemp, \$200; Dishwasher, GE Potscrubber 730, white, approx. 2-3 yrs. old, gd. working cond. \$100 obo. Joann, Ext. 7459 or 344-7459.

SEWING CABINET - Martha Washington 3 drawer, walnut w/material storage compartments on either side. Roy, Ext. 3973.

WASHER & DRYER - 2 spd. 5 cycle washer, 3-cycle portable dryer, both sm., suitable for apt., \$100 both. Jeff, Ext. 2959.

Tools, House & Garden

ENGINE, 3.5hp, 2-stroke Tecumseh for snow blower or other machine w/4 mounting holes, runs well, \$30 neg. 289-9533.

LAWN MOWER - Sears 25" riding mower, 7hp, runs well, \$100. Walter, 567-9025.

LAWN MOWER - Murray, 5.5hp, 22" cut self propelled, well maint., runs well, grass catcher, \$110 neg. Travis, 289-9533.

LEAF VACUUM - Billy Goat, gd. cond., ask. \$250. Tim, 208-0408.

Cycletrons Picnic, 9/6

The Cycletrons, BNL's motorcycle club, invite all club members, their families, friends, and others interested in motorcycles, to their 6th annual family picnic, Saturday, September 6 (rain date, 9/13) at noon at the gazebo by the softball fields.

Hamburgers, hot dogs, salads, and soda will be available, with various games, a raffle, and much more. Buy tickets, at \$5 per adult — children 12 and under are free — from Frank Dusek, Ext. 2022; Charles Gardner, Ext. 5214; or Frank Cetero, Ext. 2012.

TOOLS - chainsaw, lawnmower, garden. Bob, 584-5206.

Sports, Hobbies & Pets

BICYCLE - woman's 10spd. excel. cond., \$30 obo. Anna, Ext. 5341.

DOG CRATE - 24 x 17 x 28", \$30. Karen, Ext. 4262.

GO CART - Murray Rattler LXT new w/5.5hp, B&S Intek & Torq-a-Verter, lg. rear tires & adj. seat, \$800 neg. Travis, 289-9533.

PIANO - small upright, mahogany, by Brahms of N.Y., \$350 neg. 744-3569.

RV COOKTOP - 3-burner cooktop for RV or pop-up camper, gd. cond., ask. \$75. Tim, 208-0408.

TREADMILL - Weslo Cadence 815 motorized, gd. cond., \$50. Subhash, Ext. 4762 or 696-4608.

VIOLINS - (1) 3/4 size, (1) full size, both excel. cond., w/bow & case, \$300 ea. Tom, Ext. 7707.

Audio, Video & Computers

SCANNER - Visioneer One touch 8100, almost new, perfect. cond. w/software manual, cable, for Windows, \$20. Don or Sue, 698-3695.

TV STAND/UTILITY CART - 26w x 15.5" d x 29.5"h. light wood finish, one shelf + 2 dr. cabinet at bottom. Joyce, 289-5770.

Yard & Garage Sales

SMITHTOWN - 3 Stevens Pl. off Terry Rd., multi-family, many items of interest, 9 a.m.-3 p.m. Tom, Ext. 7859 or 360-3803.

Miscellaneous

PHONE - 900MHz cordless w/built-in digital answering machine, works well. \$5. Peter, Ext. 2913 or 516-978-0137.

PHONE - new Curtis 2.4GHz cordless, w/ans. machine & caller ID. \$30. Yiquin, Ext. 5268.

UNIQUE PINATAS - all occasions, all characters, cartoon, Disney, Sesame Street. Donna, Ext. 4547 or 821-0359.

Wanted

BOAT TRAILER - dual axle for a 22' boat. Ron 516-982-5252.

BOWLERS - for BERA Bowling league. Starts 9/4 at Shirley Bowl. Pete 209-0177.

CANOE - Pat, Ext. 7192 or pc@bnl.gov.

MOTORCYCLES - bent or broken, any age or cond. Kevin, Ext. 3082 or 281-8031.

TAPE DECK - or recorder, 4-track, stereo, reel to reel. Don or Sue, 698-3695.

RESEARCH VOLUNTEERS - men and women who smoke cigarettes, ages 18 and over, are needed for MRI study. Strictly confidential, fee provided. 344-2773.

ROOM TO RENT - need rm. w/bathrm., single male, non-smoker, works a lot of hrs. Hugh, 924-7262.

Ellis Island Trip Rescheduled for 9/21

As a result of the power outage, (see story, page 1) the planned BERA trip to Ellis Island and the Statue of Liberty had to be re-scheduled for Sunday, September 21. The luxury coach will leave the Brookhaven Center promptly at 8:30 a.m. and start the return at 4:30 p.m. Tickets, at \$39 per adult and \$36 per child over 5, are available at the BERA Sales Office.

Roll Up Your Sleeve: Blood Drive, 9/10

To replenish Long Island's blood supply, BNL is holding a blood drive on Wednesday, September 10, from 9:30 a.m. to 3 p.m. in the Brookhaven Center. Those eligible to donate are people in good health between the ages of 17 and 75 who weigh at least 110 pounds. Donors should have photo identification and know their social security number. To make an appointment, contact Susan Foster at Ext. 2888, or e-mail donateblood@bnl.gov. In your message, include your name, phone extension, and preferred time to donate.

Services

Services are listed as a courtesy to BNL employees. They are not screened or recommended by the Bulletin. A complete list is at www.bnl.gov/bnlweb/pubaf/bulletin/services.htm. For paper copies, call Ext. 2345.

ARCHITECTURAL DRAFTING - new homes, alterations, 25 yrs.' exp., many BNL customers. RJ, 929-8514.

AUTO REPAIR - master mechanic will work on your car. Transmission, rebuild engine. Lin, 474-9358.

ATTORNEY - personal injury, criminal, (DWI, etc.) avail. 24 hrs., strictly confidential. 331-0302.

ATTORNEY - accidents, real estate, matrimonial, family, wills, other, free consultation. Sam, 516-873-0011.

ATTORNEY - specializing in immigration, real estate, matrimonial, wills, estates, corporations, free consult. Susan, 209-1200.

ATTORNEY - specializing in personal injury, worker's compensation, social security disability. Frank, 333-5034.

ATTORNEY - real estate, wills, estates, matrimonial, injury, other, free consultation, Lab discount. Anna, 874-7337.

AUTO DETAILING - hand waxing, interior cleaning, pick up & drop off avail. while you work. Steve, 878-6391.

AUTO MECHANIC - factory trained foreign car specialist BMW, Mercedes Benz, Saab, Volvo. 25 yrs.' experience, honest, highly recommended. Billy, 205-0028.

BAKED GOODS - Gloria's gourmet cookies, pies, cakes. Mark, 369-7476 or www.angelfire.com/ga2/gopisso.

BLINDS - installation. Joe, 563-2103.

BOAT HAULING - inside, outside, winter storage, reasonable. Al, 878-2577.

BOAT MECHANIC - shrink-wrap, winterizing, repairs, I/O service, we travel to your boat, hauling avail. up to 25'. Rich, 281-1089.

BOAT TRANSPORT/ENGINE REPAIRS - repowering I/O, Mercruiser, Volvo, OMC, licensed, insured since 1980, 10% discount to Lab employees. Tom, 589-6640.

BRICKWORK - masonry, patios, walks, retaining walls, landscaping ties, Belgium block, 25 yrs. Lab disc. Tony, 698-9274.

CALLIGRAPHY - for all occasions, weddings, bar/bat mitzvahs, births, housewarming, blessings, family trees. <http://www.geo.cities.com/calligraphybysharon/index.html>.

CARPENTRY - all types. 917-570-5349.

CAR REMOVAL - junk cars, trucks & motorcycles removed free of charge. Rich, Ext. 4201 or 589-9103.

CATERING - all occasions, large and small, excel. food, services. Frank, Ext. 3120.

CESSPOOL SERVICE - 24 hrs/7 days, cesspools found, drains cleaned. Pumping, aeration, drywells, bacteria products, install., repairs. Licensed, insured. 727-0644.

CHILDCARE - NYS certified, arts & crafts, music, dance, outside activities. Monday - Friday, 3 yrs. & up. Dory, 369-9229.

CHILDCARE - experienced, flexible hours., responsible, Sr. at St. Joseph's College (elem. ed. & spec. ed.) \$12/hr. varies by # of children. Laurie, 516-297-8874 or 979-9371.

CHILDCARE - licensed daycare provider available day & night, full-time or part-time, reasonable rate incl. meals, C.P.R. certified, D.S.S. welcome. Marie, 758-4328.

CHILDCARE - all ages, experienced mother of one will care for your children, refs. avail. Tina, 395-4521.

CHILDCARE - by lic., loving mother, refs. provided by BNL employees. Robin, 345-0298.

CHILDCARE - lic. & ins. provider, f/t, p/t, before & after school, refs. avail. Diane, 727-3213.

CHILDCARE - overnight & weekend in Islip Terrace home, experienced, caring mother, refs. Susan, 224-9146.

CHILDCARE - licensed daycare provider available f/t or p/t, reasonable rate incl. meals, D.S.S. welcome. Tracy, 208-3925.

CHILDCARE - CPR-certified mother and assistant will babysit your child in my Shirley home. Meals, activities included. Keri, 399-8383.

CHIMNEY SWEEP - fireplaces, wood & oil chimneys, ss caps & chase pans, f/p accs., Lab discounts. Mike, 821-5526.

CHIROPRACTOR - need help getting around lately? Let chiropractic methods help you feel better. Dr. Joanna Fasulo, 289-3939.

CHOCOLATE - handmade candy, custom orders, party & wedding favors, printed ribbons. Emily, 265-8960.

CHOCOLATE PIZZA - boxed, made to order, 3 sizes, allow 3 days delivery. 751-7023.

CHRISTMAS ORNAMENTS - homemade. Brian, Ext. 4297.

Learn to Dance



Join the

BNL DANCE CLUB

with all new instructors

- **series 1:** U.S. Theatre Arts Champion Mark James (9/17-11/5)
- **series 2:** U.S. Rhythm Champion Stephanie Falciano (11/12-1/21)
- **series 3:** Club-style specialist Michael Pagan (1/28-3/24)
- **series 4:** Latin & Rhythm Champion Patti Panebianco (3/31-5/26)

8 weeks of lessons start

Wednesday

September 17th

North Ballroom, Brookhaven Center

Register now for

- **6-7 p.m.** INTRODUCTION Ballroom 101 **lindy, swing, jive, West Coast swing** (beginners, \$30/person/8 weeks)
- **7-8 p.m.** SYLLABUS **mambo & merengue** level III (intermediate, \$35/person/8 weeks)
- **8-9 p.m.** TECHNIQUE International **tango** (intermediate/advanced, \$40/person/8 weeks)

Sign up ASAP

Make checks payable to the BNL Dance Club and send to: Marsha Belford, Bldg. 134. For more information, contact Marsha Belford, belford@bnl.gov or Ext. 5053; or Ron Ondrovic, ondrovic@bnl.gov or Ext. 4553.

Attn.: Basketball Players

BERA is seeking a league coordinator, players, and volunteers to form a BERA basketball league. If you are interested, then contact Christine Carter, Ext. 5090, or ccarter@bnl.gov.