

Homeland Security Expo at BNL

On Monday, November 24, BNL's Ralph James and U.S. Representative Steve Israel hosted a "Homeland Security Technology Exhibit" at BNL. Hands-on displays at the event highlighted technologies from companies and organizations across Long Island and showcased local homeland security and defense efforts. Displays included biometric access technology, biological agent detection equipment and more than 50 additional demonstrations from small to large businesses.

BNL was well represented by members of James's Energy, Environment, & National Security directorate, displaying radiation and chemical sensors, biological countermeasures, and material protection, accounting and control programs.

More than 350 attendees listened to talks by DOE's Brookhaven Area Office Manager Mike Holland, BNL Director Praveen Chaudhari, U.S. Representative Steve Israel, newly elected Suffolk County Executive Steve Levy, Department of Homeland Security (DHS) Deputy Assistant Secretary, Office of Plans, Programs, and Budgets Marc Hollander, Director of DHS's Homeland Security Advanced Research Projects Agency William Rees Jr., a message from U.S. Representative Timothy Bishop given by Staffer Brian Farber, and BNL's

Small Business Administration Liaison Officer Jill Clough-Johnston.

Israel, who, as a member of the House Armed Services Committee, has been an advocate of the defense and homeland security industries on Long Island, said, "Long Island was once the capital of our nation's defense industry; we have the talent and ingenuity to again be a leader in the homeland security field. Today's exhibition of the exciting products being developed on Long Island demonstrates that potential. I am confident that local companies have a vital role to play in protecting our nation from the threat of terrorism."

The event also allowed attendees, from Long Island companies and organizations including Lockheed-Martin, Northrop Grumman, Telephonics, EDO Corp., and BNL, to interact with procurement and funding officials from the Department of Homeland Security, the Small Business Association, and the Defense Logistics Agency. — Peter Genzer



1. BNL's Paul Moskowitz (center) introduces Department of Homeland Security Deputy Assistant Secretary, Office of Plans, Programs, and Budgets Marc Hollander (left) to BNL's Peter Vanier. 2. Ralph James, BNL Associate Laboratory Director for Energy, Environment & National Security. 3. U.S. Representative Steve Israel. 4. Suffolk County Executive Elect Steve Levy. 5. Steve Israel and Hollander are at the Lab's Homeland Security display exhibit with BNL's Chuck Finrock (back, left), and Peter Vanier (back, center). 6. William Rees Jr. (left), Department of Homeland Security, talks with BNL's Joseph Carbonaro.



**BNL's Goldhaber Fellows
To Present Mini-Symposium, 1/7**
Employee Feature: Onarae Rice

Stories inside



8th Annual Pine Barrens Research Forum Held at BNL



Pictured at the 8th Pine Barrens Forum were: (from left) Steve Jones, CEO of the Suffolk County Water Authority, Tim Green, BNL Environmental & Waste Management Services Division; Jan Naidu, BNL retiree; Peter Scully, Regional Director of New York State's Department of Environmental Conservation Region 1; Robert Gaffney, Suffolk County Executive; Veena Naidu, longtime Pine Barrens supporter; Henry Bokuniewicz, Director of Long Island Groundwater Research Institute at Stony Brook University; Ray Corwin, Executive Director of the Central Pine Barrens Joint Planning & Policy Commission.

The eighth annual Pine Barrens Research Forum, held on October 3 in Berkner Hall, was attended by approximately 150 scientists, environmentalists, managers, and members of the public. This event is hosted by BNL, the Long Island Groundwater Institute at Stony Brook University, and the Long Island Pine Barrens Joint Policy & Planning Commission. Opening remarks by Michael Holland, Area Manager for

DOE's Brookhaven Area Office, BNL Director Praveen Chaudhari, and Suffolk County Executive Robert Gaffney not only welcomed speakers and guests to the day of scientific papers, but also announced the formation of the Foundation for Ecological Research in the Northeast or FERN.

This not-for-profit organization will build on the research foundation (continued on page 2)

389th Brookhaven Lecture 'Nanoscale Twist in Liquid Crystal Miniature Video Displays,' 12/17

Recently, commercial large-viewing-angle flat panel displays, as well as miniature video displays for digital cameras, camcorders, head- and helmet-mounting, have been produced using ferroelectric liquid crystal (FLC) and antiferroelectric liquid crystal (AFLC) technology.

While developing materials for these devices, researchers noticed the thermal signature of a rich variety of new intermediate phases of the liquid crystals.

The structures of these intermediate phases look identical by conventional x-ray analysis and involves nanometer orientational properties that occur at smaller dimensions than can be observed using conventional optical microscopy.

To overcome this limitation of conventional investigative techniques, Ron Pindak, a physicist at BNL's National Synchrotron Light Source (NSLS), and other researchers used a property of synchrotron x-ray sources — or more specifically, an intense beam of linearly polarized x-rays of a specific energy — to directly probe the nanometer-scale helical ordering of these new phases of liquid crystals.

To learn more about this research, join Pindak on Wednesday, December 17, at 4 p.m., when he presents the 389th Brookhaven Lecture, "Nanoscale Twist in Liquid Crystal Miniature Video Displays." Pindak will be introduced by Steven Dierker, NSLS Chair and Associate Laboratory Director for Light Sources.

To join Ron Pindak for dinner at an off-site restaurant after the lecture, contact Corinne Messana, Ext. 7398, or messana@bnl.gov.

As Pindak will explain in his talk, the x-ray scattering process is highly sensitive to the orientation of the chemical bonding of the atom, and therefore sensitive to the orientation of the molecule itself when using x-rays with an energy that excites electrons from the core of an atom within a molecule. He will describe how FLCs and AFLCs are used in devices and will contrast their behavior with more widely used liquid crystals.

Pindak joined BNL in 2001 as a physicist after 24 years at Bell Laboratories. Since then, he has headed the Science Program Support Section of the User Science Division, and taken the lead in developing a condensed matter program. He also served as the Interim Associate Director for the BNL Nano-center.

Pindak received a physics B.Sc. from Boston College in 1969 and a Ph.D. in physics from the University of Pennsylvania in 1975.

All are invited to this free public lecture. Visitors to the Lab age 16 and over must bring a photo ID.



Calendar
of Laboratory Events

- The BERA Sales Office is located in Berkner Hall and is open weekdays from 9 a.m. to 3 p.m. For more information on BERA events, contact Andrea Dehler, Ext. 3347; or Chris Carter, Ext. 2873.
- Additional information for Hospitality Committee events can be found at the Lollipop House and the laundry in the apartment area.
- The Recreation Building (Rec. Hall) is located in the apartment area.
- Contact names are provided for most events for more information.
- Calendar events flagged with an asterisk (*) have an accompanying story in this week's Bulletin.

— EACH WEEK —

Mondays: BNL Gospel Choir
5:15-7 p.m. Berkner Hall. All faiths are welcome. www.bnl.gov/bera/activities/choir/.

Weekdays: Free English for Speakers of Other Languages Classes
Beginner, Intermediate, and Advanced classes. Various times. All are welcome. Learn English, make friends. See www.bnl.gov/esol/schedule.html for schedule. Jen Lynch, Ext. 4894.

Mon., Tues., & Thurs.: Kickboxing
\$5 per class. Mon. & Thurs. noon-1 p.m. in the gym; Tues., 5:15-6:15 p.m. in the gym; Thurs., 5:15-6:15 p.m. in Brookhaven Ctr. Registration is required. Christine Carter, Ext. 2873.

Mon., Thurs., & Fri.: Tai Chi
Noon- 12:45 p.m., Brookhaven Center North Room. Adam Rusek, Ext. 5830 or rusek@bnl.gov.

Tuesdays: Welcome Coffee
10-11:30 a.m. Rec. Hall. Hospitality event. Come and meet friends. The first Tuesday of every month is special for Lab newcomers and leaving guests. Hospitality Chair Monique de la Beij, 399-7656.

Tuesdays: BNL Music Club
Noon, North Room, Brookhaven Center. Come hear live music. Joe Vignola, Ext. 3846.

Tuesdays: Singles Club
5:15 p.m., Brookhaven Center. Contact: Jean, Ext. 4391.

Tuesdays: Jiu Jitsu Club
6:30-7:30 p.m. in the gym. All levels, ages 6 and above. \$10 per class. Tom, Ext. 4556.

Tuesdays: Toastmasters
1st and 3rd Tuesday of each month, 5:30 p.m., Bldg. 463, room 160. Guests, visitors always welcome. www.bnl.gov/bera/activities/toastmasters/default.htm.

Tuesdays & Thursdays: Aerobics
5:15-6:30 p.m., \$4 per class. Rec. Hall. Pat Flood, Ext. 7886.

Tuesdays & Thursdays: Aqua Aerobics
5:15-6:15 p.m. Christine Carter, Ext. 2873.

Tues. & Thurs: Upton Nursery School
9-11:30 a.m. in the Rec. Hall. For 3 & 4 year olds. Alison Tilp, Ext. 4465, or tilp@bnl.gov.

Wednesdays: On-Site Play Group
10 a.m.-noon. Rec. Hall. An infant/toddler drop-in event. Parents meet while children play. Suzanne Surrow, 476-6610.

Wednesdays: Farmer's Market
11:30 a.m.-1:30 p.m., Berkner Hall parking lot

Wednesdays: Weight Watchers
Noon-1 p.m. Michael Thorn, Ext. 8612.

Wednesdays: Yoga Practice
Noon-1 p.m., Brookhaven Center. Free. Ila Campbell, Ext. 2206.

Wednesdays: Open Chess Night
5-8 p.m., Rec. Hall. Christine Carter, Ext. 5090.

Fridays: Family Swim Night
5-8 p.m. at the BNL Pool. \$5 per family.

Fridays: BNL Social & Cultural Club
6-9 p.m. North Ballroom, Brookhaven Ctr., dance lessons, 9-11:30 p.m. general dancing. Rudy Alforque, Ext. 4733, rudy@bnl.gov.

— THIS WEEKEND —

Saturday, 12/13

Shopping Trip to Peddler's Village
\$15 per person. Bus leaves BNL at 9 a.m. and returns to BNL at 7 p.m. Peddler's Village is a country village in Pennsylvania with 70 specialty shops that sell a wide variety of merchandise. Purchase tickets at the BERA Sales Office. Christine Carter, Ext. 5090.

Sunday, 12/14

Hospitality Holiday Potluck Dinner
5 p.m., Rec. Bldg. The Hospitality Committee invites all BNLeers to a holiday potluck dinner. Bring a dish to share for six people. Santa will visit at 5:30 p.m. For more information, contact Monique de la Beij, 399-7656.

— WEEK OF 12/15 —

Wednesday, 12/17

***BSA Recital: Humorous Talk**
Noon, Berkner Hall. Popular local humorist David Bouchier will present "Ghosts of Christmas Past," which will surely put BNLeers in the mood to celebrate the holiday season. For more information, see <http://music.bnl.gov>.

Rifle & Pistol Club Meeting
Noon, Conference Room, Bldg. 535. All BNLeers are welcome. Come learn about the Club's activities. Jim Durnan, Ext. 8236, or www.bnl.gov/bera/activities/rpc/.

***389th Brookhaven Lecture**
4 p.m., Berkner Hall. Ron Pindak of the National Synchrotron Light Source Department, will present "Nanoscale Twist in Liquid Crystal Miniature Video Displays," a talk on ferroelectric crystals. All are welcome.

BNL's Goldhaber Fellows to Present Mini-Symposium, 1/7

On Tuesday, January 7, all are invited to attend a mini-symposium at 2 p.m. in the Hamilton Seminar Room, Bldg. 555, to hear BNL's Goldhaber Fellows talk about their work and future plans. Almost three years ago, BNL created the Gertrude and Maurice Goldhaber Distinguished Fellowships Program with funding from Battelle Memorial Institute and Stony Brook University, partners in Brookhaven Science Associates. The fellowships are awarded to candidates with exceptional talent and credentials who have a strong desire for independent research at the frontiers of their fields. Goldhaber appointees work in close collaboration with a member of the BNL scientific staff who serves as their mentor.

Presently, there are 11 fellows, some of whom will be completing their appointments towards the end of this fiscal year. Oleg Gang, Physics Department, studies fundamental structural and statistical properties of surfaces of soft condensed matter employing the National Synchrotron Light Source (NSLS). His mentor is Benjamin Ocko of the NSLS.

Seogjoo Jang, Chemistry Department, is working on quantum master equation approaches for condensed phase dynamics with mentor Marshall Newton of Chemistry. Young-June Kim, Physics, does

condensed matter physics employing the NSLS. His BNL mentor is John Hill of Physics. Robert Klie, Center for Functional Nanomaterials (CFN), works on understanding the structure property relationships



With BNL Distinguished Scientist Emeritus Maurice Goldhaber (seated, left) and eight Goldhaber Fellows are: BNL Director Praveen Chaudhari (back, third from right), BNL Deputy Director for Science & Technology Peter Paul (standing, left), and Senior Scientist Leonard Newman (back, right), who administers the Gertrude and Maurice Goldhaber Distinguished Fellowship Program. BNL's Goldhaber Fellows are: (front, from left) Elena Lymar, Yinan Wei, and Hua Gen Yu; (back, from left) Seogjoo Jang, Oleg Gang, Kimberly Mayer, Bernd Surrow, and Robert Klie. Not present are Fellows: Young June Kim, Peter Petreczky, and Jian Wang.

Roger Stoutenburgh D0091203

Onarae Rice – Getting a Start in Science at BNL

Onarae Rice first started his career in medical research at BNL in 1995 as a Science & Engineering Research Semester (SERS) student, when he was 21 years old. Born and raised in South Carolina, he went to college in his home state — Wofford College in Spartanburg, a small, private liberal arts school with an enrollment of about 1,100 students.

"I'd never been to New York before," Rice said, recalling his first trip to BNL. "I remember going over the Verrazano Bridge with everything I owned in my Honda Civic. It was dusk, and the view was breathtaking, but also overwhelming. I wanted to turn around and go back home, but I kept going forward."

Rice has kept going forward ever since. He earned a B.S. in psychology from Wofford College in 1996, an M.A. in psychology in 2000 from Stony Brook University (SBU), and, this October, he earned a Ph.D. in biopsychology from SBU.

After his internship at the Lab, Rice was hired as a medical associate in BNL's Medical Department in 1996. Currently working on a post-doctoral assignment under the direction of John Gatley, Medical Department, Rice is using the NASA Space Radiation Laboratory to study the effects of heavy ion radiation on glucose metabolism in the brain. These studies are designed to

help determine what types of radiation protection astronauts will need as they probe deeper and deeper into space.

Previously, Rice studied the effects of addictive drugs on the brain under the direction of Stephen Dewey, Chemistry Department. Earlier, as an undergraduate, he had worked with Seichi Yasumura, then a consultant in the Medical Department, in conjunction with St. Luke's/Roosevelt Hospital to monitor the elemental body composition of patients who are HIV-positive.

As a result, Rice now is co-author of six published scientific papers that describe research he conducted at BNL.

Rice attributes his early drive to succeed as a student mainly to the inspiration he gained from his mother and grandmother. "My mother gave birth to me when she was 16, and I never knew my father," he said. "My grandmother and mother, both very spiritual people, raised me. They encouraged me to continue my education."

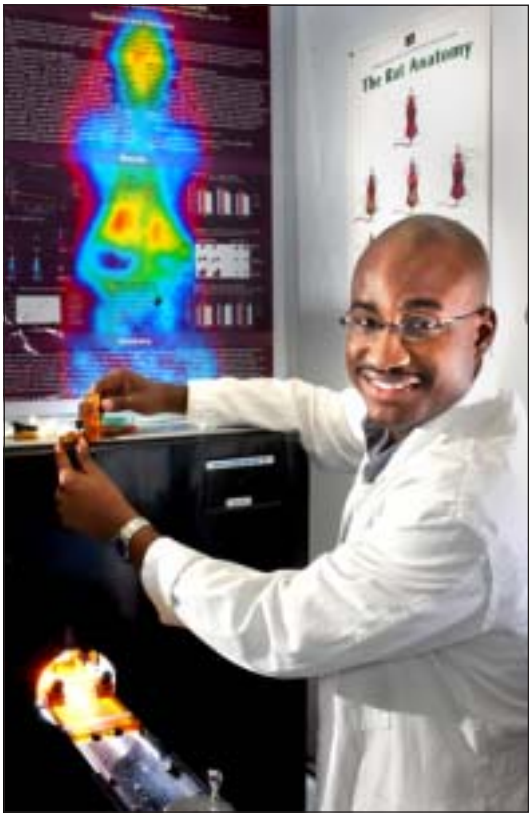
He also gained inspiration and support from his wife, Tieraney Rice. "I've known Tieraney since I was in fifth grade," Rice said. "We started dating in high school, and we were married in 1997. She is a second-grade teacher in Bay Shore, and she also tutors children and teaches liturgical dance. I figured if she can do all

that, I can reach my goals, too."

Rice plans to continue his career in medical research, perhaps in academia. "I'd like to teach and run my own lab," he said.

In addition to working on fulfilling his career goals, Rice has found time for sports, mentoring, and helping to fight breast and prostate cancer by raising funds for a charity called Big Country Foundation. Rice is captain of the BERA softball team and is a player in the BERA volleyball team. He also has helped mentor students enrolled in various programs in BNL's Office of Educational Programs, and he was honored with a DOE Outstanding Mentor Award in 2002. In 1999, he also won the DOE Annual Hispanic Heritage Award for Achievement in Education.

"I am indebted to so many people at BNL," Rice said, "from Renee Flack [retired] in the Office of Educational Programs, who first brought me to



Onarae Rice prepares for a NASA experiment using a MicroPET camera to determine how heavy ion radiation affects the brain.

Roger Stoutenburgh D0091203b

the Lab as a SERS student, and who has encouraged me during my eight years here, to all of my supervisors who have given me so much of their time and knowledge. I wanted to give something back, and so I've mentored minority students who, like me, want to be involved in science."

— Diane Greenberg

(cont'd.)

Pine Barrens

established at the Upton Ecological & Research Reserve and will in time expand research to all ecosystems in the northeastern United States.

The keynote speaker, BNL's own Jan Naidu, now retired, provided an overview of past meetings at BNL, noting that the Pine Barrens Research Forum became an annual event after Bob Gaffney, at the first Forum, welcomed guests to the

"First Annual Pine Barrens Research Forum." Thus the precedent was set.

This year's forum covered a diverse set of topics ranging from the effect of light on amphibians to the effect of prescribed fire on the orange-striped oak moth caterpillar that has been ravaging BNL's forests for the past several years. Other topics included the use of fertilizers to reduce stress effects in

trees, recovery of ectomycorrhizal communities after fire, estimation of Peconic River flow based on groundwater monitoring, and preliminary results of radiotelemetry of eastern hognose snakes here at BNL.

In a new session held at the Forum undergraduate students involved in BNL's summer education programs presented their research. The four students, Megan Dyer from the University

of Rhode Island, Susan Costa from Rhode Island Community College, Kristine Hoffmann from University of Massachusetts Amherst, and Tim Walters of the State University of New York College of Environmental Science & Forestry, each completed research associated with the Lab's Natural Resource Management Program and the Upton Ecological Research Reserve during the summer of 2003.

BNL Web Search Function Now Powered by Google

Last week, the BNL web search function was switched to a search appliance manufactured by Google, one of the most recognized names in the search engine industry. Those at the Lab who have used the system have probably also noticed a significant increase in the ease and accuracy of locating relevant web documents within BNL webspace.

Until recently, this search function was provided by a system called the Microsoft Index Server, a component of Microsoft Internet Information Server, the server system that hosts a majority of BNL websites. However, comments received through the Web comment and suggestion form first placed on the BNL Intranet

home page in October 2002 to improve the quality of the main BNL website showed that users wanted more: for example, to receive the most relevant results in a ranked order, with a useful or descriptive text snippet to show whether or not the result listed was relevant to the user's query. These requirements are met by the new Google system.

BNL's Web master, Gary Schroeder of the Community, Education, Government and Public Affairs Directorate advises that since it is now easier than ever to locate material on the Web, it is even more important to "clean house" and remove outdated content to reduce the number of irrelevant results returned on each query.

Also, Schroeder says, to maximize the likelihood that relevant "hits" will be displayed within the first few results returned, all web authors are encouraged to structure their web pages logically, i.e., include descriptive page titles, heading tags and page description meta tags. A quick tutorial on these principles is available at www.bnl.gov/itd/web/metatags.asp.

Users will find a Frequently Asked Question (FAQ) list located at <http://intranet.bnl.gov/itd/googleFAQ.asp> which should answer many questions regarding this new system, Schroeder says. "You can go to this page for a list of BNL web servers that are currently being crawled by the Google Appliance as well as an explanation of the 'subcollec-



tions' feature, which allows for department-specific searches."

If you have any questions which are not addressed by this FAQ, then e-mail Schroeder at schroede@bnl.gov.

United Way Update

As the Bulletin went to press on Wednesday, December 10, the BNL fund drive for the United Way of Long Island stood at \$76,167. "Please keep sending in your pledges," says Jennifer Lynch, this year's United Way fund drive coordinator. "Remember all the vital services that help Long Islanders that will be curtailed or cut without extra support. Every dollar counts. Our goal this year is \$120,000. So please keep giving."

Jewelry Sale, 12/17

Another way to give, says Lynch, is by supporting events that will wholly or partially add to BNL's United Way fund. A jewelry sale on Wednesday, December 17, 11 a.m.-2 p.m. in the Recreation Hall in the apartment area, will donate 10 percent of the proceeds to the United Way. Prices will range from \$4 to \$150 for jewelry in the latest styles which will include sterling silver and semi-precious stones.

Arrivals & Departures

Arrivals

Kristen De Pass CEGPA
Jason Graetz ES&T

Departures

Osbourne Lawrence Plant Eng.
Kenneth Mohring Staff Svcs.

BERA Sales Office Holiday Closings

The BERA Sales Office will close at 12 noon on Wednesday, December 24, and remain closed until 9 a.m. on Monday, December 29. At the New Year, the office will close at 3 p.m. on Wednesday, December 31, and remain closed until Monday, January 5, 2004.

Retirement Counseling

A TIAA-CREF representative will visit BNL on Wednesday, December 17, and Friday, December 19, to answer employees' questions regarding the TIAA-CREF retirement plan, such as TIAA and CREF differences, allocating funds between TIAA and CREF, options, flexibilities with TIAA-CREF, and retirement options. For a 45-minute appointment, call Duane Walden, (800) 842-2733, Ext. 7289.

BERA Ski Weekend, 2/20-22

Join BERA for a Ski Weekend to Gore Mountain, Lake George, NY, from Friday, February 20, to Sunday, February 22. The bus will depart BNL on 2/20 at 5 p.m. and depart Lake George at 5 p.m. on 2/22 for the trip home. Ski all day with transfers to Gore Mountain. Tickets, which can be purchased at the BERA Sales Office in Berkner Hall, include deluxe motor coach and two nights at a hotel, welcome refreshments, several buffet-style meals, and parties scheduled for Friday, Saturday, and Sunday. Prices range from \$195 pp-quad, \$215 pp-triple, \$225 pp-double, with \$25 extra for open bar option for the weekend. The deposit is required by December 16. For more information, see www.adventureunlimited.com.

Trip to Peddler's Village Rescheduled

As a result of last weekend's snowstorm, the shopping trip to Peddler's Village, originally scheduled for Saturday, December 6, has been rescheduled for this Saturday, December 13. Tickets, which cost \$15 per person, are still available at the BERA Sales Office. The bus will leave BNL at 9 a.m. and return to BNL at 7 p.m. Peddler's Village is a country village in Pennsylvania with 70 specialty shops that sell a wide variety of merchandise. For more information, contact Christine Carter, Ext. 5090.

'Learn to Be Tobacco Free' Smoking Cessation Program at BNL

The Occupational Medicine Clinic's Health Promotion Program is sponsoring an on-site smoking cessation program entitled "Learn to Be Tobacco Free," which is presented by the Suffolk County Department of Health Services and demonstrates a success rate of over 60 percent.

The program is conducted under the direction of a certified nurse practitioner. In addition to learning about what happens to your body and what to expect during the first few days and weeks after quitting, prescription medication as well as nicotine replacement products will be available to medically eligible participants.

The program will run for six consecutive weekly sessions from noon to 1 p.m. in the large conference room in Bldg. 490, beginning on Tuesday, January 6. To register, or for more information, contact Michael Thorn, Ext. 8612, or mthorn@bnl.gov.

Asian Pacific American Association

Annual Holiday Potluck Party

The Hospitality Committee cordially invites guests, visitors, and their families to come and share a Thanksgiving Potluck on Saturday, December 13, 5-11 p.m. in the Recreation Hall in the apartment area. Bring a dish or two for about six persons to share, and two large bottles of soda. Santa Claus will join the festivities, and parents can bring a small wrapped gift for him to present to their child. Children can also enjoy using the crafts table, and a Chinese ribbon dance will be performed. For more information, call Marie Van Buren, Ext. 4727, or Hai-Dee Lee, Ext. 2062.

Safety Glass Office Closings

Over the coming holiday season, the Safety Glass Office will be closed on Wednesday, December 31, and Wednesday, January 7.

Money Talks, 12/18

Retirement Distribution Flexibilities

At noon on Thursday, December 18, a representative from TIAA-CREF will give a talk in Berkner Hall on retirement distribution flexibilities. Topics to be discussed will include evaluating retirement income needs, opportunities to save more, asset allocation strategies, TIAA-CREF income options and how they may affect retirement income, and helpful web tools and individual counseling options. Register by completing the form sent to all employees and returning it to Joyce Wund, Bldg. 185.

Ballroom Dance

The BNL Ballroom Dance Club offers two eight week series of dance lessons in the Brookhaven Center starting on Wednesday January 7.

Beginner Swing/Foxtrot
6 - 7 p.m.

Advanced Beginner Rumba/Cha Cha
7 - 8 p.m.

The instructor will be Ginny Rae, who teaches at Stony Brook University (SBU) and coaches the SBU dance team. The lessons will be priced according to class size, for example, about \$25/series for 30 people. BERA members may bring a guest.

To register or for more information, call John Millener, Ext. 3853; Madeline Windsor, Ext. 5069; or Jean Logan, Ext. 4391.

Tread Softly

The Safety Shoe Office will be closed on Monday and Tuesday, December 22 and 23.

Foot Screening, 1/23

Join Podiatrist Ben Dimichino on Friday, January 23, from 9 to 11:45 a.m. in the Occupational Medicine clinic, Bldg. 490, where he will discuss the latest treatments for planters warts and nail fungus, as well as other common foot-related complaints and concerns.

A three-dimensional computerized scanner will also be available for those who wear or feel that they may be a candidate for orthoses.

To schedule an appointment, e-mail Linda DiPierro at dipierro@bnl.gov.

Calendar

(continued)

Thursday, 12/18

Blood Drive

9:30 a.m.-3 p.m., Brookhaven Center. To make an appointment, contact Susan Foster, Ext. 2888, or donateblood@bnl.gov.

*'Money Talks' Seminar

Noon, Berkner Hall. A representative from TIAA-CREF will give a talk on retirement distribution flexibilities. See notice at right. Check your mailbox for registration forms.

Friday, 12/19

Christmas Concert

Noon, Berkner Hall. Carols, old and new and holiday music, sung by the BNL Choral Group, including soloists. All are invited to this free concert.

BERA Holiday Party, Last Tickets Day

6-11 p.m. East Wind Caterers, Wading River. Tickets cost \$50 per person and include full open bar, hors d'oeuvres, dinner, buffet, dessert, DJ, and dancing. Purchase tickets by TODAY, Friday, 12/12, at the BERA Sales Office in Berkner Hall. Christine Carter, Ext. 5090.

— WEEK OF 12/22 —

Monday, 12/22

IBEW Meeting

6 p.m., Knights of Columbus Hall, Railroad Ave., Patchogue. A meeting for shift workers will be held at 3 p.m. in the union office. The agenda includes regular business, committee reports, and the president's report.

Wednesday, 12/24

Lab Closed from 12:30 p.m.

Thursday, 12/25

Lab Closed for Christmas Day

No Bulletin will be published this week.

— WEEK OF 12/29 —

Thursday, 1/1

Lab Closed for New Year's Day

No Bulletin will be published this week.

— WEEK OF 1/19 —

Friday, 1/23

*Podiatry: Foot Screening, Consultation

9-11:45 a.m. in the Occupational Medicine Clinic, Bldg. 490. See notice at left. To schedule an appointment, e-mail Linda DiPierro at dipierro@bnl.gov.

— WEEK OF 2/16 —

Fri., 2/20 - Sun. 2/22

*BERA Ski Weekend to Gore Mountain

Bus departs BNL on 2/20 at 5 p.m. and departs Lake George at 5 p.m. on 2/22. Ski all day w/transfers to Gore Mt. Trip includes deluxe motor coach and two nights hotel, welcome refreshments, several buffet-style meals, and parties scheduled for Fri., Sat., and Sun. nights. Prices from \$195 pp-quad, \$215 pp-triple, \$225 pp-double. \$25 for open bar option for the weekend. Tickets and additional information available at the BERA Sales Office in Berkner Hall. Deposit required by 12/16/03.

Note: This calendar is updated continuously and will appear in the Bulletin whenever space permits. Submissions must be received by the preceding Friday at noon to appear in the following week's Bulletin. Enter information for each event in the order listed above (date, event name, description, and cost) and send it to bulletin@bnl.gov. Write "Bulletin Calendar" in the subject line.

Recital

David Bouchier Talk, 12/17 'Ghosts of Christmas Past'



David Bouchier, well-known humor columnist and classical DJ, will talk on "Ghosts of Christmas Past," on Wednesday, December 17, at noon in Berkner Hall.

Those who have enjoyed Bouchier's previous conversation pieces at BNL are already keen to hear his surely unconventional wisdom on such a topic. For those who do not know Bouchier yet, if you miss him, you'd better not cry, you'd better not pout. Scrooge and Jacob Marley will rattle chains of regret at you, and it will be your own fault!

Changes in Site Vending Services Under Way

Staff Services is making a change in snack and beverage vending machine services. This should result in a long-term improvement.

By federal law (the Randolph-Sheppard Act), vending services at government-owned facilities must be provided through the local commission for the blind and visually handicapped. At BNL, this means that the New York State Commission for the Blind and Visually Handicapped operates the program either through a contractor or by directly assigning a visually impaired individual.

Currently, services at BNL are contracted through an agree-

ment, administered by the Lab, between the NYS commission and DOE's Brookhaven Area Office. The current vendor has notified the state that he is no longer servicing the Lab and is removing equipment from BNL.

Existing snack and soda machines will no longer be serviced, but coffee and cold food machines at some locations will be serviced. NYS will install new equipment at BNL and another state contractor will provide temporary service from January to March. In April 2004, a visually impaired individual will take over operations at BNL.

For additional information, contact Ruth Comas, Ext. 2715.

Weight Watchers at Work

The first class of the next Weight Watchers at Work session starts on Wednesday, January 14. BNLeers can register for this session on the first day or on Wednesday, January 7, from noon to 1 p.m. in the Brookhaven Center. The cost will be \$99 for 12 weeks. Contact Michael Thorn, Ext. 8612 or mthorn@bnl.gov.

Roll Up Your Sleeve: Blood Drive, 12/18

To replenish Long Island's blood supply, BNL is holding a blood drive on Thursday, December 18, from 9:30 a.m. to 3 p.m. in the Brookhaven Center.

Those eligible to donate are people in good health between the ages of 17 and 75 who weigh at least 110 pounds. Donors should have photo identification and know their social security number.

To make an appointment, contact Susan Foster at Ext. 2888, or e-mail donate blood@bnl.gov. In your message, include your name, phone extension, and preferred time to donate. For more information, call Deborah Botts, Ext. 3888.

Holiday Party Tickets

Today, Friday, December 12, is the last day to purchase Holiday Party tickets, which are \$50 per person for the five-hour party. BERA Store, Ext. 3347

Ski Weekend Deposit

Deposits of \$60 are needed by December 16 for the BERA Ski Weekend to Gore Mountain, Lake George, NY, February 20-22. The cost is \$225 per person (double) for the weekend, including transportation. BERA Store, Ext. 3347.

Gym Lockers

BERA will no longer collect locker fees beginning January 2004. If you possess a locker but do not use it, let it go.

\$50 Free Fresh food

FreshDirect — Purchasers get \$50 free fresh food with their first order, which must total \$100 or more. This offer expires 12/31/03. For more information, go to www.freshdirect.com/bnl. The access code is Quark 2004.

Music at Noon, 12/19

'Merrier Than the Merry Organ'

All are welcome to attend a free, informal concert of carols and contemporary music to be given by the BNL Choral Group on Friday, December 19, at noon in Berkner Hall. Solos and choral songs will be performed.

The concert is open to the public. Visitors of 16 and over must carry a photo ID.



Hospitality Committee Potluck Dinner

The BNL Hospitality Committee invites all BNLeers to a holiday potluck dinner in the Recreation Hall at 5 p.m. on Sunday, December 14. Bring a dish to share with six people. Santa will visit at 5:30 p.m. For more information, contact Monique de la Beij, 399-7656.



Motor Vehicles & Supplies

02 HONDA SPORTTRAX 90 ATV - yellow, 4 spd., a/t, excel. cond., ask., \$2,000. John, Ext. 5912.

00 CHEVROLET BLAZER ZR2 - a/t, a/c, p/s, p/b, p/w, high rider, moonroof, 41K mi., \$14,000/neg., mint. cond. Vinny, 286-3446.

00 CHEVY TRUCK SILVERADO V8, white/gray leather int., Bose am/fm/cass/cd, crew cab, 39K mi., \$20,000/neg. Cynthia, 698-9016.

00 MAZDA MILLENIA - a/t, a/c, p/s, p/b, p/w, loaded, heated seats, moonroof, 60K mi., ask., \$10,500. Gregg, Ext. 4548 or 874-8631.

00 VOLKSWAGON PASSAT WAGON - a/t, a/c, p/s, p/b, p/w, V6, loaded, mint cond., 47K mi., \$18,500. Raymond, 718-225-5783.

95 CHEVY G20 VAN - a/t, a/c, p/s, p/b, insulated, 3rd bench seat, cd/radio, 195K mi., \$1,800/neg. Don, Ext. 7237 or 939-6571.

95 MUSTANG - a/t, p/w, p/l, 2dr., alarm, spoiler, tint windows, many extras, mint cond., 57K mi., \$5,100. Roslie, 399-2925.

95 TOYOTA CAMRY - a/c, p/s, p/b, p/w, cd, tinted wds., new brakes, 35K mi. on new guar. eng., \$4,200. Ext. 4705 or 929-4978.

94 JEEP GRAND CHEROKEE LAREDO - 4x4, V8, leather, tow pkg., excel. cond., 136K mi. \$4,500. Tom, Ext. 7805.

94 MAZDA 626 - a/t, a/c, p/s, p/b, p/w, new tires, sunroof, 110K mi., \$3,250/obo. Jim, 344-5018/wkday or 335-9007/wkend.

93 CHEVROLET CORSICA - a/t, a/c, p/s, p/b, blue, 4dr., new battery, starter, exhaust & more. 120K mi., \$1,275. Vicki, 698-5332.

93 DODGE CARAVAN - p/s, p/b, p/w, V6 3.3L, ABS, excel. cond., 114K mi., \$3,100. Peter, Ext. 3705 or 689-1877.

93 DODGE CARAVAN - 3L, V6, p/l, p/w, new Alpine radio, cd & windshield, 82K mi., \$3,900. Mike, Ext. 5319 or 698-8028.

93 INFINITY J-30 - fully loaded, Alpine Bose cd, 72K mi., \$6,200. Tom, Ext. 4030.

91 TOYOTA CAMRY - all pwr., am/fm/cass. stereo, new timing belt, mint cond., 147K mi., \$2,500. Adnan, Ext. 2379 or 807-3560.

91 VOLVO 940-SE - a/t, a/c, p/s, p/b, p/w, white, powered sunroof, gd. body & mechs., 130K mostly hwy. mi., \$2,000. William, Ext. 6263.

89 CHEVROLET CAPRIS - a/t, p/s, p/b, p/w, new front brakes, ignition & plugs, excel. radio system, 89K mi., \$700. Susumu, Ext. 5152.

89 JAGUAR - red/gold leather int., 4 dr., am/fm radio/cass., ask. \$3,500 neg. Cynthia, Ext. 3084.

87 TOYOTA MANUALS - for Camry, \$10 obo. Pete, Ext. 5114.

CHROME RIMS - four 16", \$500. Jim, Ext. 7625.

Boats & Marine Supplies

U-LINE ICEMAKER - 24x14x14, \$300, Mike, Ext. 6090.

Furnishings & Appliances

BED - king size brass w/boxspring, \$200. Peter, Ext. 4272.

BED - queen size, used only a few yrs., very dense spring for comfortable sleep, \$250, Susumu, Ext. 5152.

DEHUMIDIFIER - Emerson, excel., \$85; Kenmore microwave, \$110; Panasonic oven, gd. cond., \$60. Joe, Ext. 3783 or 929-8321.

FOODSERVER/SEALER - Vacuum food sealer, new/still in orig. pkg., plastic bags/ incl. chips, \$40. Carol, 744-8632.

OFFICE DESKS - oak, 48"wx30"d, 11 pcs., \$80/ea.; partition walls, beige, 60"hx48"w, 4 pcs., \$40/ea., all in gd. cond. Gail, 929-3700.

STOVE - Tappen 30" gas, 1 yr. old, white, \$100. Don, Ext. 7237 or 929-6571.

TV - 25" Daewoo, color, works, no remote, \$75 obo. Susan, 209-0476.

Free

NORDIC-TRACK - style exercise machine; 20 gal. fish tank; 2 coolers; stereo cabinet; bug zapper. Don Ext. 7237 or 929-6571.

Tools, House & Garden

CLIPPER/SHREDDER - for branches/leaves, like new, \$125. Joe, Ext. 3783 or 929-8321.

WINDOW - Certaineed ThermoPane, white, vinyl replacement window, 32"wx38"h, brand new, \$100, Rich, Ext. 3239.

Sports, Hobbies, & Pets

BICYCLE - men's Ross Mt. Olympus, all-terrain, 15 spd, 18" frame, 26" wheels, helmet, perfect cond., \$70. Jerome, 473-6546.

SAXAPHONES - tenor, silvertone, \$125; alto, Selmer Bundy II, \$250; alto, Yamaha YAS23, v.g. cond., \$600. Joe, Ext. 3966 or 589-5126.

Audio, Video & Computers

BASS GUITAR AMPLIFIER - Yamaha 50 watt, simple controls, excel. sound, v.g. cond., ask. \$75. Joseph, Ext. 2795.

CAMERA - Minolta x570 automatic, wide angle, telephoto lenses & case, \$100. John, 543-7065.

CD ORGANIZERS - case logic 36 disc capac., \$12; case logic 48 disc capac., \$17, both new, never used. Angela, Ext. 5322.

COMPUTER - Dell, 1.1Ghz CPU, 20Gb HD, 256Mb RAM, CDRW/DVD, \$350, w/CDRW, \$300; Don, Ext. 7237 or 929-6571.

PALM SMARTPAD - use w/ Palm III or higher, catch hand notes & drawings on your Palm Pilot, new & tested, \$50. Frank, Ext. 5920.

VIDEOS - CherFitness; A New Attitude; Buns of Steel Step 2000; Cindy Crawford, Shape Your Body, \$5/ea. Angela, Ext. 5355.

Miscellaneous

STEMWARE - 10 goblets, 12 flutes & 6 cordials; Romanian cryst., clear w/frosted petals on glass & stems, \$50/all. Donna, Ext. 2826.

STOVE - Hearth Stone woodburning, excel. cond., \$400/neg. Jeff, Ext. 3082 or 821-6867.

Lost & Found

CALCULATOR - found in Bldg. 490, very sophisticated, Kathryn, 484-1727.

Wanted

COMPUTER - Windows 98 to buy cheap, must be working. Tomasz, Ext. 7448.

GIFT WRAP - and people to wrap gifts for U-Way fund raiser, 12/17-23, 11 a.m.-2 p.m., Berkner. Drop wrap at Bldg. 179B or BERA Sales in Berkner. Christine, Ext. 5090.

RESEARCH VOLUNTEERS - men and women, ages 18 and over, are needed for MRI study. Strictly confidential, fee provided. 344-2773.

TOOL POST GRINDER - Thomas, Ext. 3172.

TOY TRAINS - Lionel, Amer. flyer & others, cast metal toys, high cash paid, set also for sale. Bruce, 924-4097.

Happenings

Long Island Symphonic Choral Association, which contains several BNLeers, will perform "Mass In B-Minor" by J.S. Bach on 12/13 at 8 p.m. at the St. James RC Church in Setauket. Tickets cost \$16. To buy, call Dave, Ext. 5081, or Alex, Ext. 5334.

In Appreciation

My family and I want to thank everyone for their support after the death of my brother, David. Thank you for the flowers, prayers and kind words. — Kathy Brown & Family

Special thanks to all who arranged and attended my retirement luncheon and for the lovely gift. Thank you and so long to all my friends and co-workers. I will miss all of you. It has been an honor and a privilege to work here with so many good and talented people. I have many memories to reflect on in these 26 years. — May God Bless You, Cathy Green

Use the Phone

It's snowing . . . Want to know if the Lab is open?

Dial 344-INFO (4636)