

Workforce Restructuring Plan Comment Period 5/9 Through 5/23

A draft workforce-restructuring plan has been developed by DOE and BNL to ensure that, during a large-scale restructuring, certain protections are guaranteed for affected employees. That plan, and a set of "Questions & Answers," are available for review and comment at <http://www.bnl.gov/bnlweb/workforce.asp>. Copies are also available at the BNL Research Library.

The draft plan is designed as a procedural framework for BNL's guidance in the event of a large-scale workforce restructuring. Lab management does not envision that BNL will undergo the type of significant restructuring that would require invoking the workforce-restructuring plan.

The requirement for the plan dates back to 1993, following the end of the Cold War, when the U.S. Congress passed legislation to govern how contractors conduct layoffs at certain DOE sites. This legislation only applies to DOE sites classified as "defense nuclear facilities," meaning those facilities that were involved in the storage, use, or production of nuclear material.

Several DOE science labs, including BNL and Argonne National Laboratory, were designated as such facilities. BNL received that designation because it was operating nuclear reactors and storing spent fuel on the site at that time. The legislation, known as "Section 3161," required the development of a workforce-restructuring plan to ensure that workforce changes at these defense nuclear facilities are accomplished in ways that minimize impacts on workers and communities. It specifically provides for stakeholder consultation in the process and provides preference-in-hiring for qualified displaced workers.

DOE requires that employees and community stakeholders have access to the workforce-restructuring plan during a two-week comment period. The comment period runs from May 9 to May 23, 2005. Comments on the plan can be submitted using the comment box on the main plan page, by e-mailing those comments to tell DOE@bnl.gov, or sending them in writing to Michael Holland, Site Manager, DOE-Brookhaven Site Office, Bldg. 464, PO Box 5000, Upton, NY 11973. DOE is required to consider all comments it receives and, if appropriate, modify the plan document accordingly.

By and large, no changes will result from BNL filing a workforce-restructuring plan. BNL will continue to manage layoffs by calling for volunteers, and employees will receive the same benefits upon termination as they presently receive. While the plan is not directly connected to the budget-driven and project-completion reductions in force BNL is currently experiencing, it does have an impact in that BNL will limit the number of voluntary separations allowed until the plan is finalized. Once the final workforce-restructuring plan is approved, Human Resources will begin processing the remainder of those voluntary separations.

The comment period was announced in the May 9 Monday Memo (available at <http://intranet.bnl.gov/memo/>), and a "brown-bag" session on the plan (announced in the Memo, by flyer, and by e-mail) was held on Wednesday, May 11, by DOE's Bob Gordon and BNL's Bill Hempfling.

The event was broadcast live on WBNL and is archived at www.bnl.gov/video for those who were unable to attend.

IEEE Awards Thomas Roser

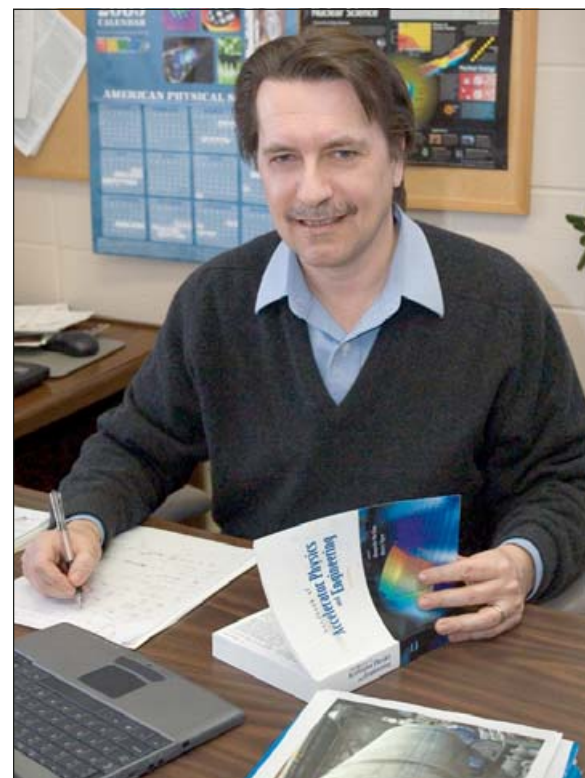
Thomas Roser, Associate Chair for Accelerators & Accelerator Division Head in the Collider-Accelerator Department (CA-D), has been selected as one of two recipients of the 2005 Particle Accelerator Science & Technology Award from the Nuclear & Plasma Science Society of the Institute of Electrical & Electronics Engineers, Inc. The award, which consists of a plaque and \$2,000 for each recipient, will be given to Roser and to Ronald Davidson of Princeton University, on May 18, at the biennial particle accelerator conference to be held in Knoxville, Tennessee.

Roser's citation reads: "For pioneering scientific work and introduction of new technology in the acceleration, storage and collision of polarized protons in the high energy collider RHIC [Relativistic Heavy Ion Collider]."

In experiments at RHIC, polarized protons — elementary particles that have a spinning motion, analogous to a spinning top — collide with each other moving at nearly the speed of light. Physicists probe the resulting jets of particles in an attempt to understand how the spin of protons is related to the spin of their component parts, quarks and gluons.

Normally, the spin direction of protons is random, but the spin has to be polarized, or spinning in the same direction, to study the particles. Roser made significant contributions to the design and construction of a string of magnets called Siberian snakes for RHIC and the Alternating Gradient Synchrotron (AGS), the accelerator that feeds polarized protons into RHIC. Originally invented in Novosibirsk, Russia, in the 1970s, the magnets act to keep protons polarized.

"The partial snakes that I developed for the AGS worked to stabilize polarization during acceleration to over 50 percent. A new, stronger partial snake should give over 70 percent polarization," Roser said. "I am honored that the Nuclear & Plasma Science Society has recognized my work in this area. Actually, the design and construction of hardware and beam needed for proton polarization in RHIC



Thomas Roser

and the AGS includes the contributions of many colleagues at Brookhaven."

Thomas Roser received a Ph.D. in physics from the Swiss Federal Institute of Technology in Zurich, Switzerland, in 1984. He joined the University of Michigan in 1984 as a research fellow and was appointed assistant professor of physics at the university in 1990. In 1991, he joined BNL as an associate physicist, and, in 1999, he was promoted to senior physicist and CA-D Accelerator Division Head. In addition to holding that position, in 2002, he also was appointed Associate Chair for Accelerators. A Fellow of the American Physical Society, Roser received the Brookhaven Science & Technology Award in 2000.

— Diane Greenberg

404th Brookhaven Lecture

Nanovision: Nanotubes, Nanowires, and Nanoparticles

A very few years ago, the field of nanoscience — the science of materials at the nanometer (nm), or billionth-of-a-meter scale — was relatively unexplored. Today, it is one of the hottest areas of research, with new techniques and new tools to probe the structure and function of materials at the atomic and molecular level.

Once scientists had found that, at this ultra-small scale, the chemical and physical properties of materials often differ from the properties they have in bulk form, the rush was on: first to determine the new structural and chemical characteristics of each material, then, to try and use this knowledge to improve products and processes needed in everyday life.

Just some of the possible benefits from nanotechnology, for example, are better electronics, stronger and lighter materials, and more efficient catalysts to speed up chemical processes.

To talk about some of these exciting discoveries and how he and his colleagues work on them at the Lab, Stanislaus Wong of BNL's Materials Science Department and Stony



Stanislaus Wong

structures yield different properties as they are treated in different ways. For example, if a carbon nanotube, which might be as small as 1.4 nm in diameter (a human hair is about 10,000 nm wide), is subjected to ozone, its sidewall structure becomes filled with holes, and the modified nanotube can thus be used for gas intercalation, critical for energy storage considerations. Wong will describe how he and others have made some of these extraordinary findings as well as the next steps in their research.

Stanislaus Wong earned his bachelor's degree at McGill University in 1994, his Master's at Harvard University in 1996, and his Ph.D. at Harvard in 1999, all in chemistry. Upon completion of a postdoctoral stint at Columbia University, he moved to SBU as an Assistant Professor in the Chemistry Department and simultaneously took a joint appointment at BNL on September 1, 2000.

Refreshments will be offered before and after the lecture. All who wish to dine with the lecturer after the talk at an off-site restaurant may contact Ali Lopez, Ext. 2590, or lopez@bnl.gov.

— Liz Seubert

National Synchrotron Light Source Annual Users' Meeting, 5/23-25

The 2005 National Synchrotron Light Source (NSLS) Annual Users' Meeting will be held at BNL from Monday to Wednesday, May 23-25. A forum for reporting new research results and advances in experimental capabilities that use synchrotron radiation, the meeting is hosted and sponsored by the National Synchrotron Light Source Users' Association, an external organization representing the users of the NSLS.

Lab Community Invited to Plenary Session, 5/24

As a new feature this year, the Users' Executive Committee, the association's elected body, cordially invites all BNL employees to the Tuesday, May 24 Plenary Session (8:30-10:20 a.m.) free of charge. Speakers will include:

Peter Stephens, Professor of Physics & Director of the Graduate Program, Department of Physics & Astronomy, Stony Brook University; BNL Director Praveen Chaudhari; Patricia Dehmer, DOE Associate Director, Office of Basic Energy Sciences, and Steve Dierker, Associate Laboratory Director for Light Sources.

Registration for this session is not required.

Calendar
of Laboratory Events

- The BERA Sales Office is located in Berkner Hall and is open weekdays from 9 a.m. to 3 p.m. For more information on BERA events, contact Andrea Dehler, Ext. 3347; or Chris Carter, Ext. 2873.
- Additional information for Hospitality Committee events can be found at the Recreation Bldg. and at the laundry, both located in the apartment area.
- Contact names are provided for most events for more information.
- Calendar events flagged with an asterisk (*) have an accompanying story in this week's Bulletin.

— EACH WEEK —

Weekdays: Free English for Speakers of Other Languages Classes

Beginner, Intermediate, and Advanced classes. Various times. All are welcome. Learn English, make friends. See www.bnl.gov/esol/schedule.html for schedule. Jen Lynch, Ext. 4894.

Mondays: BNL Gospel Choir

5:15-7 p.m. Berkner Hall. All faiths are welcome. www.bnl.gov/bera/activities/choir/.

Mondays & Wednesdays: Pilates

Mon., Noon-1 p.m. in the Rec. Hall; Wed., 5:30-6:30 p.m. in the Rec. Hall. Christine Carter, Ext. 5090.

Mon., Tues., & Thurs.: Kickboxing

\$5 per class. Mon., noon-1 p.m. in the gym; Tues., 5:15-6:15 p.m. in the gym; Thurs., noon-1 p.m. in the gym; Thurs., 5:15-6:15 p.m. in Brookhaven Ctr. North Room. Registration is required. Christine Carter, Ext. 5090.

Mon., Wed., & Fri.: Tai Chi

Noon-1 p.m., Brookhaven Center North Room. Adam Rusek, Ext. 5830 or rusek@bnl.gov.

Tuesdays: Welcome Coffee

10-11:30 a.m., Rec. Hall. First Tuesday of every month is special for Lab newcomers and leaving guests. Cindy Ottemann, 849-2646.

Tuesdays: BNL Music Club

Noon, North Room, Brookhaven Center. Come hear live music. Joe Vignola, Ext. 3846.

Tuesdays: Jiu Jitsu Club

6:30-7:30 p.m. in the gym. All levels, ages 6 and above. \$10 per class. Tom, Ext. 4556.

Tuesdays: Toastmasters

1st and 3rd Tuesday of each month, 5:30 p.m., Bldg. 463, room 160. Guests, visitors always welcome. www.bnl.gov/bera/activities/toastmasters/default.htm.

Tuesdays & Thursdays: Aerobics

5:15-6:30 p.m., \$5 per class or \$40 for ten classes. Rec. Hall. Pat Flood, Ext. 7886.

Tuesdays & Thursdays: Aqua Aerobics

5:15-6:15 p.m. Eight-week session. \$20 to attend once a week; \$40 to attend twice a week. Ext. 2873 for more information.

Tuesdays & Thursdays: Jazzercise

Noon-1 p.m., Rec. Hall. Preregistration is required. Christine Carter, Ext. 5090.

Tues., Thurs., Fri.: Upton Nursery School

8:30-11:30 a.m. Rec. Hall. Two- and three-day program avail. 727-8082 or Ext. 5090, for information.

Tues., Wed. & Thurs: Rec Hall Activities

5:30-9:30 p.m. General activities, large-screen TV, ping pong, chess, games, and socializing. Christine Carter, Ext. 5090.

Wednesdays: On-Site Play Group

10 a.m.-noon. Rec. Hall. An infant/toddler drop-in event. Parents meet while children play. Kati Petreczky, 821-4131.

Wednesdays: Weight Watchers

Noon-1 p.m. Michael Thorn, Ext. 8612.

Wednesdays: Yoga

Noon-1 p.m., Brookhaven Center. Free. Ila Campbell, Ext. 2206, ila@bnl.gov.

Wednesdays: Open Chess Night

5-8 p.m., Rec. Hall. Christine Carter, Ext. 5090.

Wednesdays: Dance Lessons

5:15-8 p.m. Brookhaven Cntr., North Room. BNL Ballroom Dance Club hosts lessons, beginner to adv. John Millener, Ext. 3853.

Thursdays: Reiki Healing Class

Noon-1 p.m., Bldg. 211 Conference Rm. Nicole Bernholz, Ext. 2027.

Fridays: Family Swim Night

5-8 p.m. at the BNL Pool. \$5 per family.

Fridays: BNL Social & Cultural Club

6-9 p.m., North Ballroom, Brookhaven Ctr., dance lessons, 9-11:30 p.m. general dancing. Rudy Alforque, Ext. 4733, rudy@bnl.gov.

— THIS WEEKEND —

Friday 5/13

***Spring-Into-Summer Dance**

6:30 p.m. Brookhaven Center. Dance to live music from Louis del Prete and his band Fame. Dance lesson 7-7:45 p.m. Tickets: \$15 in advance from BERA Store, \$20 at the door. Price includes hero sandwich, coffee, tea, entertainment, and dance lesson. Cash bar. Visitors to the Lab of 16 and over must carry a photo ID. See also page 4. Rudy Alforque, Ext. 4733 or rudy@bnl.gov.

***Hampton & Kingpins in Concert**

8 p.m. Berkner Hall. Sponsored by the BNL Music Club, Joe Hampton and the Kingpins will perform, with Caitlyn Amandato to open the show. All are welcome. Tickets are \$8 in advance at the BERA Sales Office, \$10 at the door. See notice, page 4.

BNL in Support of Diversity

At BNL, we work hard on fostering good diversity management and practices for an inclusive work environment. We feel that workforce diversity is essential to operational effectiveness and the Lab's goal of becoming an employer of choice," says BNL's Diversity Office Manager Shirley Kendall, who reports directly to the Lab Director, Praveen Chaudhari.

To support the Diversity Office in its work, BNL has established the Diversity Management Steering Committee, which advises the Diversity Manager on policies and initiatives; and the Affirmative Action (AA) Advisory Committee, which advises the Lab Director on progress and procedures. Also, each department and division appoints an Equal Employment Opportunity (EEO) Representative to work under the guidance of the Diversity Office to assist Chairs and Managers in monitoring affirmative action and equal employment opportunities in their areas.

At the beginning of each year, the Lab Director reaffirms the Lab's commitment to a work place free from discrimination and harassment by signing and distributing the EEO/AA Policy statement. As stated on the homepage of the Diversity Office, the Lab's commitment to equal opportunity and affirmative action is uncompromising (see box). Furthermore, it is against Lab policy to retaliate against an employee for filing a discrimination or harassment complaint.



Shirley Kendall, BNL's Diversity Office Manager

"Managers and supervisors take BNL's Equal Opportunity & Affirmative Action Policy seriously," says Kendall. "BNL is committed to good business practices and requires EEO/AA training for all supervisors.

Kendall knows that one of the toughest problems is to get employees who are experiencing discrimination to report the situation. "We realize that it is usually difficult to report these issues and strongly encourage employees to report any violations of the EEO/AA policy to their supervisor, a manager who they trust, or directly to the Diversity Office.

"Our aim is to address any potential discrimination issue with

as little disruption as possible for the employee concerned and at the same time raise the awareness of supervisors and other employees in anti-discrimination laws and practices," Kendall continues. "We want all employees to work in an environment that is free from discrimination and harassment."

In addition to the Diversity Manager, the Diversity staff includes Diversity Coordinator, Rosa Palmore, Ext. 2703, palmore@bnl.gov, and Assistant Staff Specialist, Sol Rosario, Ext. 6253, srosario@bnl.gov. The Diversity Office is located in Bldg. 185A. "The Diversity staff is always willing to assist employees with concerns pertaining to any form of discrimination," says Kendall.

Other avenues are available for Lab employees who feel that they have experienced discrimination. The Brookhaven Advocacy Council (BAC) was formed to help resolve employees' issues of mistreatment and unfair practices. Its members maintain the BAC hotline, Ext. 4200. BAC has authority to respond to employee, guest, and user concerns or issues; analyze and research data; and propose resolutions. All employees are invited to attend BAC meetings held at noon on the third Thursday of each month in a Berkner Hall meeting room, and the members are available to be contacted privately also.

Employees can also contact the Employee Relations Manager, Sue Foster, foster@bnl.gov or Ext. 2888. — Liz Seubert

BNL's Equal Opportunity & Affirmative Action Policy

• Provide equal employment opportunities to all applicants.

• Be proactive in making equal opportunity at BNL a reality.

• Employ Human Resources practices that ensure every employment decision is free from illegal discrimination and complies with those laws prohibiting discrimination as to race, color, religion, gender, national origin, marital status, citizenship, age, disability, veteran status, sexual orientation, or any other characteristic protected by law or executive order.

• Make reasonable accommodations for qualified employees with disabilities.

• Advise employees of their rights to refer violation of these policies to their supervisor, Human Resources, or directly to the Diversity Office.

• Take all necessary steps to ensure that no person intimidates, threatens, coerces, or discriminates against any individual for the purpose of interfering with the filing of a complaint, furnishing information, or assisting or participating in any manner in an investigation, compliance review, hearing or other activity related to the administration of these policies.

Introducing the 2005 Brookhaven Council

The BNL Council, which is elected by the scientific staff, is a body that advises and makes recommendations to the Director about Laboratory policies affecting the scientific staff. The Council is particularly concerned with the maintenance of an atmosphere conducive to excellence in scientific research at BNL. The Council reports to the Director.

The term of membership is three years. New members normally

begin service at the March meeting of the Council.

Brookhaven Council Chair John Miller, Chemistry Department, said, "Council members take seriously their jobs of representing the scientific staff and advising the Director on matters related to staff. They seek to make Brookhaven a better place to do science."

More information on the Brookhaven Council is available at www.bnl.gov/bnlweb/Admin/council.asp



The Brookhaven Council is composed of: (front, from left) Gene-Jack Wang, Medical Department; Arokiasamy Francis, Energy Environment & National Security (EENS) Department and Environmental Sciences Department; Radoslav Adzic, Materials Science Department; and Lawrence Kleinman, EENS; (back, from left) Council Secretary Lonny Berman, National Synchrotron Light Source Department; Benjamin Ocko, Physics Department; James Davenport, Computational Science Center; Council Chair John Miller, Chemistry Department; Steven Kettell, Physics; Walter Mangel, Biology Department; John Dunn, Biology; Graham Smith, Instrumentation Division. Not pictured are: G. Lawrence Carr, National Synchrotron Light Source; Dmitri Kharzeev, Physics; José Rodriguez, Chemistry; Dejan Trbojevic, Collider-Accelerator Department; Jie Wei, Collider-Accelerator Department.

Retirees' Old Fashioned BBQ, 6/8

BNL retirees — save Wednesday, June 8, to gather with friends for an old-fashioned barbecue organized by the Brookhaven Retired Employees Association (BREA), at the Brookhaven Center, noon-4 p.m. You will feast on hamburgers, chicken, spare ribs, and all the trimmings, dessert, and coffee (cash bar); and tap your feet to music chosen by DJ Ed Taylor. County Executive Steve Levy will be the special guest speaker.

To attend, send a check made out to BREA for \$25 per person, to: Brookhaven Retired Employees Association, Bldg. 475C, BNL, Upton, NY 11973-5000.

ASAP 'Crosstalk' Series Begins

"Crosstalk," the first in a series of lectures by members of the Lab's Association for Students & Postdocs (ASAP), will be held today, on Friday May 13, at 3 p.m., in the Chemistry Department's Building 555, Room 300.

The program will include short presentations by Kun-eek Kil, Qifei Wu, and Andy Huang on the topics of PET/medical imaging, surface science and catalysis, photo- and radiation-induced reactions, and tours of LEAF, laser kinetics, and scanning probe microscopy labs. All the Lab community is invited to attend these talks. Refreshments will be offered.

Bike-to-Work Week, 5/16-20 • Bike to Work Day, 5/20

Phil Harrington of the Training Office is a keen biker who would like to see more people enjoying this sport. Here is Harrington's take on why more folks might abandon four wheels for two, even if just occasionally — and why not start on Bike to Work Day, Friday, 5/20?

High levels of air pollution, soaring costs of gasoline, road rage, and swarms of cars clogging highways and byways are major problems that Long Islanders face every day in driving to work, to school, or down to the supermarket. At the same time, we all complain that there isn't enough time to get out and enjoy the beauty of a warm, spring day.

How can you lower air pollution, reduce the effective cost of gas, lessen traffic congestion, and decrease stress, while enjoying some time outside exercising? It's simple — leave your car at home and ride your bicycle to work.

Once you discover the freedom, convenience, and fitness benefits of biking to work, you'll wonder why you didn't start riding sooner. Besides being fun, bicycling saves on gas and vehicle upkeep, makes you healthier, and helps the environment.

This year, the League of American Bicyclists is sponsoring National Bike-to-Work Week from May 16 to 20, with Bike-to-Work Day on Friday, May 20. Even if you live too far to commute all the way by bicycle, con-



Pictured are keen BNL bikers (from left) Augy Hoffman, Phil Harrington, Jim Nemeth and his son Andy Nemeth, visiting BNL for "Take Our Daughters & Sons to Work Day," and Nick Gmur.

sider driving part way, parking your car in a public lot, and riding the rest of the way. Join fellow BNL employees in leaving the car at home and riding to work at least once that week.

Some frequently asked questions:
• *Where can I leave my bike?*
Several buildings have bike

racks in front of them, which are available. Just be sure to bring a lock. Speak with your supervisor to find if there are any other suitable parking spots for your bike.
• *Will on-site showers be available?* Showers and changing facilities are available at the gym (Bldg. 478) and Bldg. 703.

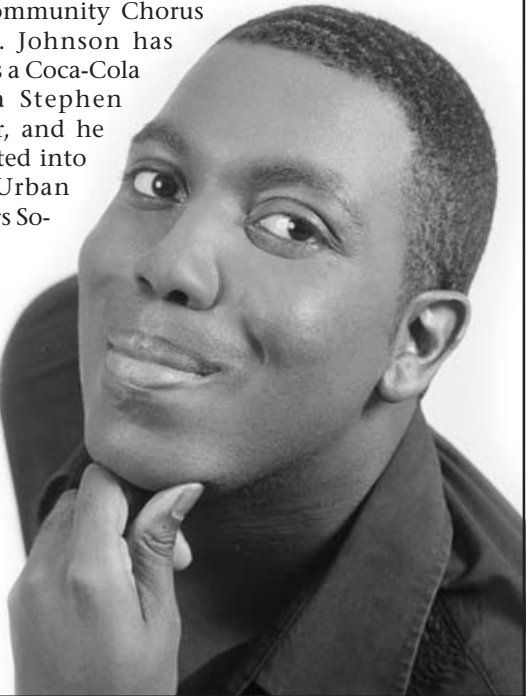
• *How do I bring in my work clothes?* Either bring them in the day before or fold them in your gym bag or backpack.
• *I don't feel like riding alone.* Partner with a coworker who lives in your area so that you can make the commitment to ride together.
— Phil Harrington



BSA Noon Recital, 5/18 Vocalist Ishan Johnson

Vocalist Ishan Johnson, a Riverhead native and the youngest soloist ever to sing with the Boston Symphony Orchestra, will perform on Wednesday, May 18, at noon in Berkner Hall. Sponsored by Brookhaven Science Associates, the company that manages Brookhaven Lab, the concert is free and open to the public. All visitors to the Lab of age 16 and older must bring a photo ID.
Now 21 years old, Johnson performs repertoire ranging from Baroque vocal works, oratorio, and opera to contemporary vocal works. A graduate of Riverhead High School who has studied voice locally at the East End Arts Council School of Music, Johnson is a student at Boston University School of Fine Arts. His bass-baritone voice is heard regularly with the Boston Pops, Georgia Mass Choir, and at the Tanglewood Music Festival.

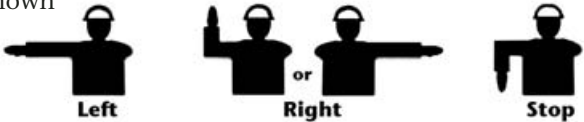
In 2003, Johnson made his Carnegie Hall debut as soloist in Beethoven's Choral Fantasy with the Boston Symphony Orchestra, and, in 2004, he performed the same work with the Newton Community Chorus and Orchestra. Johnson has been honored as a Coca-Cola Scholar and a Stephen Phillips Scholar, and he has been inducted into the National Urban League Achievers Society.



Bicycle Safety at BNL

With warmer weather upon us, and many people riding bicycles around the Lab site, the BNL Traffic Safety Committee would like to remind all bicyclists to take extra care and to follow the following safety rules:

- Ride in the same direction as automobiles, never against the flow of traffic
- Follow all traffic signs, signals, and directions, including coming to a full stop at a stop sign or red light, yielding to oncoming traffic at all yield signs, and stopping before entering a roadway from a driveway, alley, or over a curb
- Travel single file when riding on roads
- Never ride bicycles on sidewalks
- Bicycle helmets can save lives! BNL policy requires that all cyclists wear approved helmets when riding on site. First-line supervisors must issue a helmet to any individual who is assigned a Lab bicycle and ensure that the helmets are worn. Bicycle helmets that conform to the CPSC standard are purchased and maintained in inventory (K-70300 = small bicycle helmet, K-70302 = medium bicycle helmet, K-70304 = large/extra large bicycle helmet)
- Always signal all turns, lane changes, and stops using the hand signals shown



- Never ride your bicycle across pedestrian crosswalks. If you cross the street at a pedestrian crosswalk, dismount and walk your bicycle across the street
- Never carry a passenger on a bicycle

Motorists, Pedestrians

Not only bicyclists, but all on-site drivers and pedestrians must remain alert and comply with New York State traffic laws. As a motorist, you must slow down when approaching and passing bicyclists. Allow enough room so that, if the cyclist swerves into the road because of an unseen road hazard, your vehicle may still pass safely. Also, pay attention to pedestrians and yield them the right of way in crosswalks.

For more information about bicycle and traffic safety at BNL, go to <http://www.bnl.gov/esh/shsd/Article1.htm> or https://sbms.bnl.gov/sbmsearch/subjarea/128/128_SA.cfm?parentID=128.

NYC Bus Trip, 6/5

The Hospitality Committee invites all BNLers and their families to join a bus trip to Manhattan on Sunday, June 5, for a "do-as-you-like" trip. The luxury bus will leave from the Recreation Bldg. in the apartment area at 9 a.m. and leave the city at 6 p.m. The cost for adults is \$10, children 2-12, \$5; payments must be made in advance in cash. To make reservations and pay, contact Jing Rochman at deshanghai@yahoo.fr or 891-9430.

Calendar (continued)

— WEEK OF 5/16 —

Wednesday, 5/18

*BSA Noon Recital

Noon. Berkner Hall. Ishan Johnson, bass-baritone, who sings with the Boston Pops and the Georgia Mass Choir, will perform. All are welcome to this free public event, sponsored by BSA. Visitors to the Lab of age 16 and over must carry a photo ID. See below, left.

*404th Brookhaven Lecture

4 p.m. Berkner Hall. Stanislaus Wong, Materials Science Department, will talk on "Nanovision: Nanotubes, Nanowires and Nanoparticles." All are welcome. Visitors to the Lab of age 16 and over must carry a photo ID. See page 1.

Thursday, 5/19

T-Mobile Demo

10 a.m.-2 p.m., Berkner Hall. Representatives from T-Mobile will present BNLers with special rates on wireless service plans and discounts on T-Mobile phones and accessories. Contact Susan, 917-496-5967.

Friday, 5/20

National 'Bike to Work Day'

See article at left.

*Hospitality Committee Spring Potluck

5:30 p.m. Recreation Bldg. Hospitality Committee Spring Potluck dinner, all welcome. Bring a dish to share with six or more people. Miriam Rondon, 924-5131, or mia01@hotmail.com.

— WEEK OF 5/23 —

Mon.-Wed., 5/23-25

*NSLS Annual Users' Meeting

The Lab Community is invited to plenary session, 5/24. See page 1 and www.nsls.bnl.gov/users/meeting/.

Monday, 5/23

IBEW Meeting

6 p.m., Centereach Knights of Columbus Hall, 41 Horseblock Rd., Centereach. A meeting for shift workers will be held at 3 p.m. in the Union Office. The agenda includes regular business, committee reports, and the president's report.

— WEEK OF 5/30 —

Wednesday, 6/1

BSA Noon Recital, String Quartet

Noon, Berkner Hall. Hofstra String Quartet. All are welcome to this free public event, sponsored by BSA.

Sunday, 6/5

*Hospitality Bus to New York City

9 a.m. See article below, left.

Note: This calendar is updated continuously and will appear in the Bulletin whenever space permits. Submissions must be received by the preceding Friday at noon to appear in the following week's Bulletin. Enter information for each event in the order listed above (date, event name, description, and cost) and send it to bulletin@bnl.gov. Write "Bulletin Calendar" in the subject line.

Trip to U.S. Open, 9/6

The BERA Tennis Committee will sponsor a bus trip to the U.S. Open Tennis championships at the National Tennis Center, on Tuesday, September 6. The 57-seat bus will leave the Lab tennis courts at 8:30 a.m., stop at LIE exit 63 Park and Ride, and depart the National Tennis Center at 7:30 p.m. The cost of \$65 per person includes a day-session ticket (now \$45), the bus fare, and tip for the driver. Make paid reservations at the BERA Sales Office.

Arrivals & Departures

Arrivals

Alexander Milov Physics

Departures

Wesley Buxton C-A
John Gannon Instrum.
Leigh Hawkins Physics
William McGahern C-A
Paul Mickaliger C-A
M. Louise Moultrie Plant Eng.
E. Paul Valli C-A
Stephen Waski Jr. Plant Eng.
Albert Williams Plant Eng.

Joe Hampton and the Kingpins In Concert Tonight, 5/13 Singer-Songwriter Caitlyn Amanda To Open the Show

Joe Hampton and the Kingpins, a local band that plays a mix of classic rock, blues, and original songs, will appear in concert this evening, on Friday, May 13, at 8 p.m. in Berkner Hall. Sponsored by the BNL Music Club, the concert is open to the public. Tickets for the concert cost \$8 each in advance at the BERA Sales Office before 3 p.m. today and \$10 each at the door. All visitors to the Lab age 16 and over must bring a photo ID.



Joe Hampton and the Kingpins

Lead singer Joe Hampton has been on the New York music scene since 1979 when he played Max's Kansas City, the Mudd Club, and C.B.G.B.'s in Manhattan. Also, Hampton hosted one of the first music-video shows in New Jersey, called "Cable Rock." He has released two solo CDs, "Angry Joe and the Relatives/Revenge for Tomorrow," and "Joe Hampton and the Mindless Members/Not Afraid of Anything."

The Kingpins have performed in numerous Long Island venues, including the Riverhead Blues Festival, Patchogue Street Fair's "Live at Five," the Suffolk County Fair, Stephen Talkhouse in Amagansett, the Hansom House in Southampton, Bay and Main in Greenport, and several other restaurants and clubs.

Singer-songwriter Caitlyn Amanda, a 16-year-old talent who plays acoustic guitar, has years of musical theater performance to her credit. Amanda has performed across Long Island and has recently been featured on radio stations WUSB 90.1 FM and WLIU 88.3 FM, doing both live radio interviews and on-the-air performances. She has made two recordings, "Pure White" and "Wonderland," and she recently made her New York City debut in the Cutting Room.



Caitlyn Amanda

On-Site Service Station

Need an oil change? Or new brakes, tires, N.Y.S. inspection, a battery, a timebelt? All this and more can be completed at the on-site service station, Upton Industries, Inc., while you are at work. Call Ext. 4035.

Enterprise Rent-a-Car Is on Site

In Bldg. 355 at 50 Brookhaven Avenue on site, Enterprise Rent-a-Car can rent you a car, a van, or a 4x4 at discounted daily, weekly, and monthly rates, and even a three-day weekend special. Rentals for official government business are tax-exempt, and for all rentals, BNLe rs get a special discounted rate nationwide. Vehicles may be returned to one of several local Enterprise offices, including several airport locations. Vehicles can be picked up on site, or Enterprise can also pick you up if you cannot get to them.

For more information, call Ext. 4888 or 4889, weekdays, 9 a.m.-1 p.m., 3-5 p.m. or go to www.enterprise.com.

On the Menu: Cafeteria, Center Club

May's tastings at the Cafeteria are tortilla chips, pickles, sesame noodles, and flavored ice teas. At the sandwich station every Tuesday, shaker salads are custom made with your choice of poached salmon, grilled chicken breast, or sliced marinated steak and choice of dressing. And try ice cream at lunch and break time.

At the Center Club, every Wednesday is ladies' night: half-price appetizers, 5-7 p.m., free chips and salsa with every first pitcher of beer for four-person groups. Starting today, May 13, try the "Howl at the Moon" dessert special — purchase any dinner special and receive a free dessert when you howl at the moon from your table.

'Spring-Into-Summer' Dance Tonight, 5/13 Live Music with Louis del Prete and his band 'Fame'

On Friday, May 13, the BNL Social & Cultural Club will hold a "Spring-Into-Summer" dance at the North Ballroom, Brookhaven Center, at 6:30 p.m. Live music will be provided by the band "Fame," which plays ballroom, Latin, swing, hustle, etc. Band leader Louis del Prete is a Long Island dance instructor who has taught some well-attended workshops at BNL, and who will give a 45-minute dance lesson, starting at 7 p.m. Del Prete runs the popular dances at the Masonic Lodge in Babylon and at Mirelle's in Westbury.

Tickets are \$15 per person in advance or \$20 at the door, covering food: long hero, and coffee, tea, etc. Cash bar at the Center Bar. Buy tickets at the BERA Store, or contact Rudy Alforque, Ext. 4733, or rudy@bnl.gov.

American Physical Society Job Posting

The American Physical Society, a leading publisher of scientific journals, based in Suffolk County, LI, (LIE exit 68 - near Brookhaven National Laboratory) seeks a Systems Administrator. This is an exciting opportunity to be part of a small team that is responsible for the function of the computer system, network, and application infrastructure at a medium sized business. Strong knowledge and solid work experience is required with the following: Unix systems administration (Linux, FreeBSD and Mac OS X preferred); programming in a language such as perl, python, ruby ; NFS, DNS, LDAP, TCP/IP, CUPS; mail services (sendmail, postfix, SMTP). Experience with Mac OS X administration is desirable and experience with radmind is a big plus. I must have excellent English communication skills, be a team player and be service oriented. Outstanding benefits package and job stability. Check out our website: www.aps.org. For consideration, send cover letter (including starting salary requirement) and resume via fax, e-mail or U.S. mail to: American Physical Society, Attn: HR Director, 1 Research Road, Box 9000, Ridge, NY 11961, Fax: (631) 591-4155, e-mail: recruit@aps.org.

Classified Advertisements

Motor Vehicles & Supplies

02 VW JETTA - Red, Blk Int, 5-spd, excel cond., monsoon radio, roof racks, a/c, c/c, 31K mi. \$11,500/neg. Ext. 5284 or 774-2967.

98 TOYOTA TOCAMA - v. well maint., new cond., a/t, white, vinyl top, wide tires. 58K mi. \$8,500/neg. 878-0491.

98 SUBARU LEGACY OUTBACK - a/t, a/c, am/fm cass, all pwr., gar., abs, airbags, red, all wh. dr., 82K mi. \$8,000/neg. 929-4903.

96 GMC SONOMA EXT. CAB - Black w/grey int., 4.3 V6, a/t, a/c, p/w, p/l, cr. control. 67K mi. \$5,000. Ed, Ext. 3120 or 286-0654.

96 CHRYSLER CIRRUS LXI - 4cyl., a/t, a/c, abs, c/c, p/w, leather, good cond., rec. insp, carfax info. 75K mi. \$3,000. Mark, Ext. 2247.

96 VOLKSWAGON JETTA - runs v. well, new tires, clutch, trans., 4cyl., 5spd. 175K mi. \$1,500/neg. 732-6275.

95 BLAZER S-10 - 4x4, 4dr, 6-cyl, new tires, brakes, a/c, a/t, p/w, rem. key pad/drs., 90K mi. \$5,000/neg. Fred, Ext. 5319 or 369-9720.

95 PONTIAC SUNFIRE - 2dr, 5spd., am/fm/cd, s/roof, abs, p/l, p/w, p/s, c/c, tilt wh., a/c, dual a/bgs., 110K mi. \$2,000/neg. 224-1524.

95 STARCRAFT RV - 27' sleeps 6-7, excel. cond., used only 10 times, oven, microwave, a/c. Debbie, 880-1316.

94 PLYMOUTH GRD, VOYAGER - new tires, batt., struts, brakes, typical paint problem w/ Plymouths. 176K mi. \$800/neg. 495-7853.

93 AUDI 100S - 6-cyl, 4dr, a/t, abs, a/c, p/b, p/s, p/w, p/l, c/c, am/fm, cass, sun rf, good cond. 120K mi. \$3,400/neg. Paul, 878-1486.

92 GMC S10 - 6 cyl, 4x4, runs v.well. \$1,600/neg. John, 878-6417.

91 TOYOTA CAMRY - 4dr., dk. red, new tires/brakes, 108K mi. \$800/neg. 833-9606.

90 NISSAN PICKUP - 5-spd., 2WD, bed cover & liner. 100K mi. \$1,000. 286-7950.

87 SUNLINE CAMPER - 22', sleeps 6+, bath/shwr., awning, tow pkg. \$1,700/o bo. 878-5449.

87 FORD TAURUS - 4dr, a/t, V6, a/c, c/c, p/l, p/s, p/w, am/fm/cd, runs well. 108K mi. \$700/neg. Zheng, Ext. 7604 or 682-7956.

76 LANCIA SCORPION - mid-eng., two seat sports car. \$2,500/neg. John, Ext. 2788.

HUBCAPS - for 1957 Plymouth, complete set of 4, b/o. 208-0408.

Boats & Marine Supplies

13.8' OLD TOWN KAYAK LOON 138 - high adult & child seat. PolyLink3™ hull, fr. deck shock. \$500. Ed, Ext. 4188 or 806-3598.

19' GRADY WHITE TOURNAMENT - 130hp Yamaha, MagicTilt trlr., full encl., VHF & depth fdr., sw. plat., more, \$11,000/neg. 878-8302.

23' PEARSON P23 - '79 sailboat w/galley, head, cabin lights, 4 bunks. Well design perform. pocket cru \$4,700/neg. John, Ext. 2788.

25' CATALINA SAILBOAT - Shallow draft with 10HP Evinrude, head, galley, camper top, sleeps 4. \$2,950/neg. 878-2577.

27' FORMULA OPEN SPORT - Twin rebuilt 350 cu. in. Merc-cruisers, new upholstery, 60 MPH, in excel. shape. \$8,900. 878-2577.

28' NEWPORT II - fully equipped, excel. cond., main and 150 Genoa sails, 14 hp Universal diesel. \$18,000. Dick, 751-6820.

Furnishings & Appliances

AIR CONDITIONER - window type, lge., old, powerful. Works well. \$25. Alfredo, Ext. 7699.

BBQ GRILL - Thermos 2-Go LP grill. Cost \$140 new, used one season, grill tote bag incl., \$35. Don, Ext. 7237 or 929-6571.

FURNITURE - Pine, early American. Blanket bench, bunk bed, chairs, professional office desk, much more. 208-0408.

FURNITURE - 2 wood chairs, white/natural spindle back, \$15/pr, 2 wood captain's chairs, \$15/pr, also tables, lamps, more. 803-0506.

PLANTATION BLINDS - 2" white faux wood by BLINDZ with matching valance. 35" X 64". 3 sets at \$15/ea. Don, Ext. 4009.

WALL UNIT AND MATCHING TABLES - 1 yr. old, maple, paid \$2,400, ask \$1,000, moving, must sell. 828-2188.

Audio, Video & Computers

COMPUTER ITEMS - w/less keybd/mouse \$20, cdrom drv, \$2.50 ea., IEEE 1394 (firewire) PCI card \$20. Ext. 7237 or 929-6571.

PLAY STATION 1 - one game, controller & memory card, \$80. Ext. 2094 or 831-3469.

SCANNER/COPIER - HP ScanJet 200C color, flatbed, hardly used, b/o. 208-0408.

SPEAKERS - 2 Advent Legacy, 10" bass. recommended by *Consumer Reports*. \$100 neg. Ask for photos. 929-8287.

Sports, Hobbies & Pets

1992 SKYLINE TRAVEL TRAILER - 24', stove/oven, m/wave, hot bath, heat, a/c, much more, \$4,500. Ext. 4978 or 286-4945.

BOOKS ON CHESS - \$5-10. Large collection, want to sell all. Mitchell, Ext. 5340.

EXERCISE EQUIPMENT - Universal 4-station mach., extra wghts., best offer. 208-0408.

METS - 4 TICKETS FIELD LEVEL - 5/17 vs Cin \$36 5/31 and 6/2 vs Arz \$36 / 6/9 vs Hou \$40. Matt, Ext. 7388.

Tools, House & Garden

LAWN MOWER - Craftsman, 21" mulching/bagging, 4.5HP. Used less than one season. \$100. George, 286-7950.

LEAF BLOWER - Homelite, gas powered, runs well, \$65. Chris, Ext. 2094 or 831-3469.

PAVERS - 6" x 9" tumbled pavers on pallets. Bayberry blend. 350 sq ft. \$600. 384-2422.

TABLE SAW - 10" blade, 42 x 32 base, heavy duty, \$100 o/bo. Ext. 3436.

Miscellaneous

ANTIQUE RADIATORS - Cast iron, prof. repainted. 14wx 38h, \$50. Unfin. 34wx 24h, \$25. You pick up. Donna, Ext. 2826.

CULTURED STONE - 50 sq. ft., color - "Bucks County", covering for range hood, pd. \$600, ask \$150, you pick up. Tom, 543-6143.

INFANT CARSEAT - Graco Snugride, like new, base with LATCH system, 5-point harness, blue, \$35. Ext. 2414 or tbeetz@bnl.gov.

LIFE GUARD FOR HIRE - Make your children's party safe! Resp. HS student, certified, Chris, Ext. 5090 or 821-2558.

RAZOR ELECTRIC CHOPPER - authentic, hot-rod blue, used 2ce, low-rider, 15 mph, 220 lb, \$90. Donna, Ext. 3693 or 584-6131.

Yard & Garage Sales

BROOKHAVEN HAMLET - Sat. 5/14, Office equip., weight machine, furniture, household items & tools. Bay Road. Barbara, 286-7950.

MANORVILLE - Sat. May 14th - 8am - 4pm Davidson Drive. Take South Street to Silas Carter (south) 1 mile down. 874-8463.

Community Involvement

RETT STROLLATHON - I would appreciate sponsors in support of Rett Syndrome research. Any amount greatly appreciated. Susan, Ext. 2888.

Farewell Gatherings

LENORE DUDZICK - The Center, June 3, 5-8 PM. Cost is \$25/pp, BBQ & gift incl. (Cash bar.) RSVP by 5/27. Alice, Ext. 3286.

Free

ABOVE-GROUND POOL - 21 ft., pump and access., already disassembled, needs liner. Richard, Ext. 4947 or 654-3609.

Spring Potluck, 5/20

The Hospitality Committee invites all BNLe rs to a Spring Potluck dinner on Friday, May 20, at 5:30 p.m. in the Recreation Building in the apartment area.

Bring a dish to share with six or more people. For more information, contact Miriam Rondon, 924-5131, or miao01@hotmail.com.

BOXSPRINGS - Two, double, for king-size bed, in Shoreham. Ext. 7229.

EXERCISE BIKE, PLUS - Schwinn Airdyne bike, free pickup, \$15 deliv.. Small rabbit cage. Elec. wok. Don, Ext. 7237 or 929-6571.

SAILBOAT - Have trailer? Need sailboat? Free 13' Copperhead s/bt. Nathan, Ext. 7335.

Wanted

MAGAZINES - Fine Gardening magazines, from 2000 through present. 803-0506.

MOUNTAIN BIKE - In good cond. for either male or female. Kathleen, Ext. 3845.

OLD COMPUTER - want old but working computer, up to \$100. 500 MHz or higher pref. Courtney, Ext. 3018 or 347-453-5749.

For Rent

BELLPORT VILLAGE - 1-bdrm. apt., ground floor. Spacious furnish., a/c., full bath, util. incl. \$900/mo. khem, 286-8740.

MASTIC - renov'd. 2nd fl. 3-bdrm. apt., sep. ent., off-st. pkg., Vernon Ave. 10 mins to Lab. \$1,400/mo. Jaime, Ext. 7502 or 664-0268.

MASTIC BEACH - 2-bdrm. cottage, lg. kit., dinette, lg. l/r, full bath, w/d hookup, pkg., 1 mo. rent/1 mo. sec./util. not incl. \$1,200/mo. 395-1128 or 516-848-4388.

MEDFORD - new 2-bdrm., 10x10, 10x12 bsm't apt., lg. kit., lg. dr/lr, side yard, off-str. pkg., util. incl., no smkg/pets. \$1,200/mo. 374-3967.

RIDGE - Small 2-bdrm house, all electric, bsmt., 5 mi. to Lab. 1 month rent/sec. +util. \$1,200/mo. William, Ext. 8488 or 929-4663.

SAYVILLE - 1-bdrm. apt. on quiet side str. w/d use, cable, & utilities incl. No smoking/pets. \$1,000/mo. Ext. 4450 or 750-3385.

SETAUKET - Sub-lease/lease 1-bdrm. apt., 3-Village SD, avail. June-July, extendable, 2 wks. free. \$1,200/mo. Ext. 6207.

SHIRLEY - sparkling 2-bdrm. apt., lg. bath; kit., l/r, d/r, storage, no pets/smkg. 5 min. to Lab. Cell 631-495-4859. \$1,400/mo. 909-1847.

YAPHANK - Studio apt., furn. for 1 pers., pvt. ent., 4 mi. to Lab. Cable, high-spd, i/net incl. Priv. home. \$850/mo./neg. Irene, 924-3049.

YAPHANK - New apt, 1 bdrm., living area, eik, full bath. No pets/smkg. All util. incl. but phone. Outside ent., 10 min to Lab. \$1,100/mo. 238-5038.

MYRTLE BEACH, SC - 2 bdrm. (4 beds), 2.5 BA Townhouse on golf course in Little River, SC. Comm. pool. \$491 - \$813/week or \$700 - \$1200/month. \$491/wk. 472-4994.

NEWFOUND LAKE, NH - sleeps 6, lake, pool, tennis, etc., great family summer vacation. \$1,000/wk. Ed, Ext. 4188.

For Sale

EASTPORT - Nantucket Cape, 4 bdrm., 2 bath. Studio apt, kit., full bath. 1.5 acres, 18x36 kidney-shape pool, 1.3 car gar., 2 fp, c/air. \$715,000/neg. 275-2872.

MEDFORD - 2 new houses, high ranch, 2500 sq.ft., 5 BR, 3 bath, garage, 100x100 lot, rent or lease to buy, flexible financing, ready in August. \$360,000/neg. Jimmy, 662-4696.

RIDGE - 1.3 acres, opp. land reserve, all permits to build, foundation dug, city water avail. Mins to Lab. \$275,000. 286-2594.

ROCKY POINT - 1-bdrm. cottage, w/brand-new roof, floors, kit., siding, & bdrm.; mins. to beach. \$244,000. 286-2594.

SETAUKET - Lakes at Setauket Condo, 3-bdrm./2.5 bath, eik, gar., a/c, spacious, waterfront, patio, awning, new Pergo, paint, updates. \$519,000/neg. Suggy, Ext. 4369.

In Appreciation

To all my friends and co-workers in the Electric Shop, your thoughts and prayers are greatly appreciated on the loss of my father.

— John Passaro
I would like to thank my BNL family for their kindness & support during the passing of my son. It meant a lot to me & my family. God bless you all.
— Shelia Land & family

Skin Cancer Screening, 6/2

A Board-certified dermatologist will screen BNLe rs for skin cancer, Thursday, June 2, 9 a.m.-noon, Occupational Medicine Clinic. For an appointment, contact Michael Thorn, Health Promotion Coordinator, Ext. 8612, or mthorn@bnl.gov.