

Farewell to Lab Director Chaudhari

Many BNLeers from all parts of the Lab joined the large group gathered in Berkner Hall on Thursday, April 27, to thank Laboratory Director Praveen Chaudhari warmly for his greatly appreciated leadership during his past

three years as BNL Director. Chaudhari stepped down on April 30 and Samuel Aronson, previously BNL's Associate Laboratory Director for High Energy & Nuclear Physics, became Interim Laboratory Director on May 1.



Roger Stoutenburgh D9270406



Roger Stoutenburgh D9240106

BNL, Mount Sinai School of Medicine Form Joint Biomedical Imaging Center

BNL and the Mount Sinai School of Medicine (MSSM) have signed an agreement to establish a "Joint Center for Translational Biomedical Imaging." Building on earlier BNL/MSSM collaborations using radioactively tagged molecules (radiotracers) and brain-imaging techniques to investigate the biological basis of attention-deficit/hyperactivity disorder and substance abuse, this agreement will foster more robust research collaborations investigating these and other conditions, including Alzheimer's disease and depression.

The Lab's world-class medical-imaging scientists will benefit from collaboration with the highly regarded medical school where research professionals can help identify new molecular targets for radiotracer development and provide access to a broad base of research-subject (patient) populations. The agreement also establishes a mechanism for joint appointments for BNL scientists and the mentoring of Mount Sinai graduate students.

Mount Sinai researchers will

gain access to BNL's sophisticated imaging tools — including positron emission tomography (PET), high-field magnetic resonance imaging (MRI), micro-PET, and micro-MRI — and the Lab's expertise in radiotracer chemistry and facilities for developing new tracer molecules.

"This agreement draws on the complementary strengths of our two institutions," said Fritz Henn, BNL's new Associate Laboratory Director for Life Sciences. "Our hope is that this center will foster innovations in radiotracer development and imaging techniques that can be translated to improvements in the understanding, diagnosis, and treatment of disease, as well as advances in drug research and development."

"Our hope is that this center will foster innovations . . . that can be translated to improvements in the understanding, diagnosis, and treatment of disease, as well as advances in drug research and development."
— Fritz Henn

Said Dennis Charney, Dean of Academic and Scientific Affairs for Mount Sinai School of Medicine and Senior Vice President for Health Sciences for Mount Sinai Medical Center, "In addition to pursuing the research interests we already share with our BNL colleagues, Mount

Sinai scientists will likely identify new medical problems where imaging can play a role. Our medical expertise and experience in clinical studies will also be a great asset when trying to translate and apply

Brookhaven's capabilities and developments in imaging to clinical studies of disease and behavior disorders in patients."

Under the agreement, BNL scientists will continue to initiate and lead their own research programs, as well as operate, maintain, and advance the core imaging facilities, associated technical staff, and components of the clinical infrastructure. This novel integration of physical and life sciences has led to a variety of advances in radiopharmaceuticals and nuclear medicine instrumentation and will continue to be funded by the Office of Biological & Environmental Research within DOE's Office of Science and by the National Institutes of Health (NIH).

In the initial start-up phase of the collaboration, a core group of scientists from the two



Roger Stoutenburgh D0380305

Researchers at the BNL Center for Translational Neuroimaging

Fritz Henn Joins Brookhaven Lab As New ALD for Life Sciences

Fritz Henn, a board-certified psychiatrist and former Director of the Central Institute of Mental Health in Mannheim, Germany, has been named BNL's Associate Laboratory Director for Life Sciences, effective April 1.

Henn will oversee the Biology and Medical Departments, which together have 180 employees and a yearly budget of \$33 million. Research in the life sciences at BNL includes sophisticated imaging techniques, basic studies on DNA, proteins, molecular and cellular mechanisms, and biomedical and environmental applications based on this research.

A Primary Goal

One of Henn's primary goals for his directorate is to form partnerships with medical schools so that clinicians and laboratory researchers can pool their expertise to perform medical research using advanced imaging equipment at the Lab. He has already helped to establish a Joint Center for Translational Biomedical Imaging with the Mount Sinai School of Medicine (see story below, left).

"BNL has a first-class medical imaging center, which is now consolidated under the Medical Department," Henn said. "My goal is to continue our proven leadership in this area. Lab researchers have already made significant progress in understanding such conditions as addiction and obesity. My own areas of interest are depression and neurodegenerative diseases. With the Lab's imaging equipment, we can actually see the functioning of the brain as well as its structure. The brain is science's next exciting challenge — it's still largely a mystery."

A Long-Term Goal

The Life Sciences Directorate will also be playing an expanding role in the Genomes to Life program, a DOE initiative that supports advanced biological research in the area of bioenergy, with the goal of developing cost-effective, biologically based renewable energy sources to reduce U.S. dependence on foreign fuels. Henn noted that this program will give the Life Sciences Directorate new opportunities to work with researchers in other BNL departments, such as Chemistry, the Center for Functional Nanomaterials, and Energy Sciences & Technology.

"My long-term goal is to gain funding from DOE and the U.S. Department of Health & Human Services so that we can develop new technologies for medical research in order to make Brookhaven a medical user facility — a place where medical researchers could use our state-of-the-art technologies to do research in neuroscience," Henn said. "We want to also expand our supercomputing facilities for research in the areas of computational neuroscience and computational structural biology."

Fritz Henn earned a Ph.D. in physiological chemistry from The Johns Hopkins University in 1967, and an M.D. from the University of Virginia in 1971. He performed his residency in the Department of Psychiatry at Washington University School of Medicine from 1971 to 1974.

Henn began his career at the University of Iowa College of Medicine, and, in 1982, he joined Stony Brook University (SBU), where he became Professor and Chair of the Department of Psychiatry and Behavioral Medicine. In addition, from 1982 to 1983, he was Director of the Long Island Research Institute, New York State Office of Mental Health, and, from 1983 to 1994, he was Director for SBU's Institute for Mental Health Research. He moved to Germany in 1994, becoming a Professor of Psychiatry at the University of Heidelberg and Director of the Central Institute of Mental Health, positions he held until he joined Brookhaven.

— Diane Greenberg



Joseph Rubino D259406

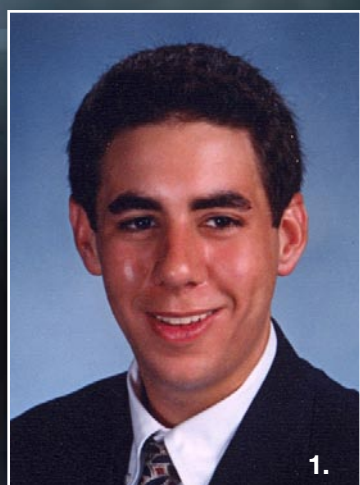
institutions will conduct pilot studies to demonstrate the value of the program and provide preliminary data. These data will be used to apply for MSSM/BNL research grants from funding agencies such as NIH.

BNL scientists involved in these pilot studies and any future studies conducted by

the center are expected to hold joint appointments with Mount Sinai. All NIH grants for joint research conducted by the center would be awarded to and administered by Mount Sinai School of Medicine.

For more information, see www.bnl.gov/bnlweb/pubaf/pr/PR_display.asp?prID=06-43.

2006 BSA Scholars



1.



2.



3.



4.



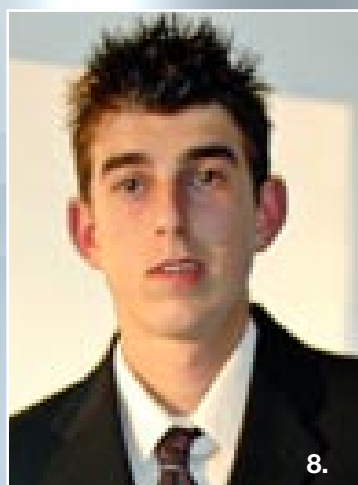
5.



6.



7.



8.



9.



10.



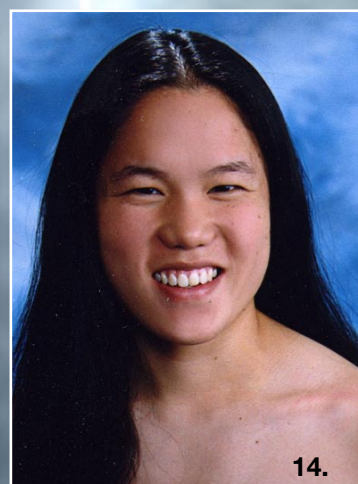
11.



12.



13.



14.



15.

Brookhaven Science Associates (BSA) has announced the 15 winners of the annual BSA Directors' Scholarships, which go to children of BNL employees in continuation of a tradition instituted at BNL 38 years ago. Each BSA Scholar is a high-school senior who will receive \$2,500 per year for up to four years of study at the college or university of his or her choice.

1. Nikolus Alexoff of Westhampton Beach High School, is the son of David Alexoff, Chemistry Department, and Margaret Desmond, Fiscal Services Division. He is also a nephew of James Desmond III, Life Sciences Directorate, and grandson of James L. Desmond, BNL retiree. He is considering attending The George Washington University Elliott School of International Affairs to major in international relations.

2. Luis Brennan of Northport High School, the son of Joseph Brennan, Collider-Accelerator Department, will attend the University of Chicago to pursue studies in physics and philosophy.

3. Margaret Brown is the daughter of William Brown of the Energy Sciences & Technology Department. After her graduation from Longwood High School, she will major in applied mathematics at Stony Brook University.

4. Graham Clenaghan, a senior at Bayport-Blue Point High School, is the son of Kristina Duryea, Biology Department. He plans to major in mathematics at Buffalo State University.

5. Naomi Frank, the daughter of James Frank, Physics Department, attends Ward Melville High School. She will major in biological sciences or pre-medical studies at Cornell University or the University of Maryland.

6. Margherita McNair of Ward Melville High School is the daughter of Robert McNair, Internal Audit & Oversight Division. As yet undecided on her major, she will attend either Columbia University or Stony Brook University.

7. David Melnekoff, a senior at Earl L. Vandermeulen High School, is the son of Nancy Sobrito-Melnekoff, Human Resources & Occupational Medicine Division. He will study neuroscience or musical performance at Cornell University or The Johns Hopkins University.

8. Boris Novakov, the son of Ognian Novakov, Physics Department, is a senior at Earl L. Vandermeulen High School. He will major in international business or finance at the New York University Stern School of Business.

9. Hannah Parker, the daughter of Brett Parker of the Superconducting Magnet Division, attends Ward Melville High School. She has decided to major in German at Middlebury College.

10. Kaitlin Rohena of Smithtown High School West, is the daughter of Brian Rohena, Plant Engineering Division. To pursue studies in biology and/or physical therapy, she will attend the State University of New York at Geneseo.

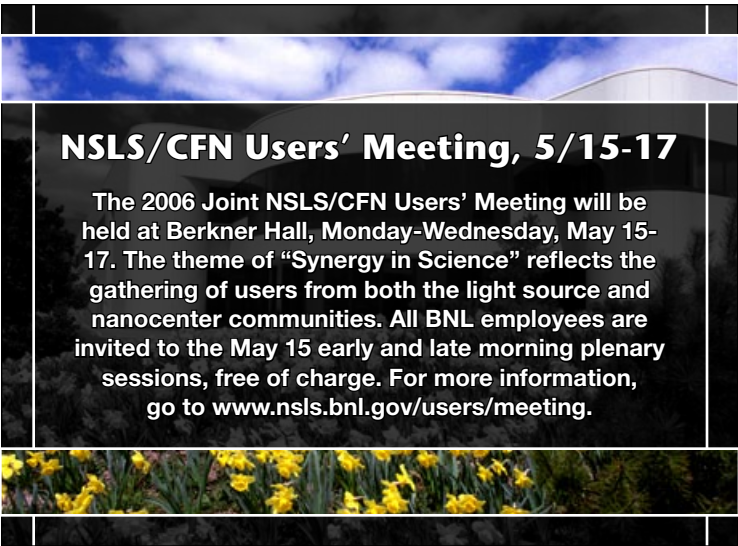
11. John Salvo, the son of BNL retiree Anthony Salvo, previously of the Procurement & Property Management Division, attends Eastport-South Manor High School. He will major in mathematics or physics at Stony Brook University.

12. William Throwe of Shoreham-Wading River High School is the son of Thomas Throwe, Physics Department, and Jane Throwe, previously of Physics. He has decided to major in physics at the Massachusetts Institute of Technology.

13. Connie Wang of Ward Melville High School is the daughter of Jia Wang, Chemistry Department. She will attend Yale University to major in biology or life sciences.

14. Jenny Wang, daughter of Jia Wang of the Chemistry Department, is a Ward Melville High School senior. She will study biology or life sciences at Harvard University.

15. Phoebe White, daughter of Sebastian White of the Physics Department, attends Mamaroneck High School. She plans to major in mathematics at Princeton University or Harvard University.



NSLS/CFN Users’ Meeting, 5/15-17

The 2006 Joint NSLS/CFN Users’ Meeting will be held at Berkner Hall, Monday-Wednesday, May 15-17. The theme of “Synergy in Science” reflects the gathering of users from both the light source and nanocenter communities. All BNL employees are invited to the May 15 early and late morning plenary sessions, free of charge. For more information, go to www.nsls.bnl.gov/users/meeting.

Elementary School Science Fair Needs Volunteers

BNL’s Elementary School Science Fair will be held on Saturday, May 13. Scientific, engineering, and technical personnel are urgently needed to work with Suffolk County teachers as part of judging teams and administrative personnel. Family members and scouts or community service students are also urgently needed to help with registration and in aiding the students in setting up their projects. Runners and registrars are needed from 8 a.m. to 11 a.m.; judges, 10:30 a.m. to 1:30 p.m.; and award presentation and clean-up help, 2 to 4 p.m. Contact Susan Sears, Ext. 5461, ssears@bnl.gov.

May Is Hispanic Heritage Club Membership Month

BERA Hispanic Heritage Club (HHC) seeks new members. Lab employees, retirees and immediate family members are welcome to join. Membership fees are \$10, with renewals due in May of each year. To join, send a check payable to “BERA Hispanic Heritage Club” with contact information regarding on-site or off-site address and telephone number to Carmen Narvaez, Bldg. 422. Proceeds from dues support Special Events such as the HHC Scholarship Fund. Contact Narvaez at Ext. 3254 or narvaez@bnl.gov.

Family Intervention: Alcoholism, 5/11
Teleconference is part of a new EAP pilot program

Register now for the first Employee Assistance Program (EAP) teleconference on “Family Intervention: Alcoholism,” to be held on Thursday, May 11, noon-1 p.m. led by EAP Manager Nancy Losinno. This pilot program will enable BNLees to call in to the teleconference from the privacy of their own offices, thus maintaining their confidentiality. Topics to be covered will include: codependency and enabling, the “disease” concept and why it is used in treatment, the difficulties in changing an alcoholic family, an overview of intervention, and treatment options. To register, complete the form that was sent to all employees and return it to Linda DiPierro, Bldg. 490. For more information, contact Linda DiPierro, Ext. 2733 or dipierro@bnl.gov.

New York Bus Trip Tomorrow, 5/6 — \$10

The Hospitality Committee invites all the Lab community and families to join a bus trip to New York City on Saturday, May 6. The bus will depart from the Recreation Hall in the apartment area at 9 a.m. and return from the city at 6 p.m. Reserve with Lisa Yang lisayang@optonline.net, or 878-3937. Pay on the bus. Tickets are: adults, \$10; children 2-12, \$5.

Bus Trip to U.S. Open, 9/5

The BERA Tennis Committee has scheduled a repeat of its popular bus trip to the U.S. Open Tennis championships at the National Tennis Center. The date is Tuesday, September 5. The bus will leave from the Lab tennis courts parking lot at 8:30 a.m. and make one stop at Exit 63 at the Park and Ride on the Long Island Expressway. Departure from the National Tennis Center will be at 7:30 p.m. The cost of the trip is \$66 per person, which includes a \$46-ticket for the day session, bus fare, and tip for the driver. Prepaid reservations are now being accepted in the BERA Store.

Join the BNL Veggie Club!

Fresh organic produce from a local farm on Long Island is available, delivered to BNL, for those who wish to join the Community Supported Agriculture (CSA) at BNL. Members receive fresh organic produce from the Green Thumb Organic Farm in Water Mill, where the Halsey family has been farming their land since 1644. The Halseys grow over 350 varieties of fruits and vegetables, picked daily for delivery to provide the highest nutritional content. As a CSA member, each week, for 26 weeks, a selection of freshly picked organic produce will be delivered to BNL for you to pick up. The selection is based upon whatever is in season that week. Often the produce will be accompanied by a recipe giving ideas for preparing that week’s specials. The fee for a season of produce is \$405, which may be paid immediately or in installments of \$200 on sign-up, by May 31, with two post-dated checks: \$105 for July 10, and \$100 for September 4. The first delivery is in early June, continuing through November. For more information, including a list of the fruits, herbs, and veggies that the Halseys grow, or to join CSA, contact Ruth Comas, comas@bnl.gov or Ext. 3545.

Elder Law Seminar, 5/25

Nancy Burner, member of the National Academy of Elder Law Attorneys, will present “The New Deficit Reduction Act: Medicare Part D Prescription Drug, What Else Is New?” on Thursday, May 25, noon -1 p.m. in Berkner Hall, Room B. All are welcome.

BERA and Hospitality Committee News

Need Help to Plan Trips, Functions

The Hospitality Committee is seeking volunteers to assist in planning functions and trips and to participate in all offerings. Open to all. Call Ext. 5090, or come to the Tuesday Coffee at 10:30 a.m. in the Recreation Hall in the apartment area.

BERA Summer Camp & Swimming Lessons

Applications are available on the BERA website (www.bnl.gov/bera/), at the gym and pool, and at the Recreation Office, Bldg. 197. At this time, the summer camp reservations are open to families living on site only. Swimming lessons are open to all; apply by the May 31 deadline.

NASCAR Tickets, 6/4, 9/24

Buy tickets today at the BERA Store for NASCAR at Dover, Delaware, on June 4 or September 24, \$110 per person.

Ducks Season Tickets

BERA has eight season tickets at all the home games.

BERA Trips Coming Up

- Cirque du Soleil, 6/11
- Six Flags Great Adventure, 7/21
- Sweet Charity at Bellport Playhouse, 8/4

Other Discount Tickets Available

- The following discount tickets are available at the BERA Store:
- Atlantis Marine World in Riverhead for \$11, rather than the \$17/\$15 normal admission fee
 - New York Dragon’s Football: Half-price tickets

Asian Pacific American Heritage Month Events

To celebrate Asian Pacific American Heritage Month, the BERA Asian Pacific American Association invites BNLees to the following events:

- Sat., 5/6 - “Haru Matsuri,” a Japanese Spring Festival, 10 a.m. – 4 p.m., Berkner Hall
- Fri., 5/19 - “Taipei Folk Dance Theater,” 7:30 p.m., Berkner Hall 6:30 p.m. Reception
- Mon., 5/22 - Philippine Tinikling Bamboo Dance & Demonstration, 11:30 a.m. – 2 p.m., Berkner Hall lobby. Note change in date.
- Tue., 5/23 - BERA Martial Art Clubs Expo, Noon, Berkner Hall front lawn (weather permitting) or lobby
- Tue., 6/6 - Swami Veditatmananda: Vedanta lecture, 4 p.m., Berkner Hall.

Arrivals & Departures

– Arrivals –
None
– Departures –
Gisella Murphy..... Staff Services
Thomas Murphy.....IPIP
Florin Staicu..... NSLS
Erich WillenMagnet Div.

Plant Swap, 5/24

The annual BNL plant swap “tailgate” will be held on Wednesday, May 24, with a rain date of May 25, at Berkner Hall’s parking lot, 11:30 a.m. - 1 p.m. Bring in plants and seedlings to exchange. No plants to exchange? You may still take something home anyway. Contact Beth Blevins, Ext. 6033.

CIGNA Representative On Site, Mondays

Each Monday, Janice Petgrave of CIGNA Healthcare will be available in Human Resources, Bldg. 185, to assist CIGNA medical plan participants with claims issues, 10 a.m.-3 p.m. Be sure to bring all pertinent documentation. For a 30-minute appointment, call Linda Rundlett, Ext. 5126.

Benefit Notes: Qualifying Events

Changes to medical and/or dental coverage may be made during the benefits annual open enrollment. Also, certain changes may be made within 31 days of when a qualifying event occurs. Qualifying events include: birth or adoption of a child, marriage, divorce or legal separation, loss of dependent status (for instance, graduation, attainment of age limit, or no longer a full-time student), death of a dependent, change in the place of residence or worksite or a spouse’s gain or loss of employment. The Benefits Office will need documentation of the qualifying event. For the change in benefits to be approved, the qualifying event must closely relate to the requested change in benefits. For example, if a child is born, a participant may add the child to his/her medical coverage. The participant cannot drop medical coverage at that time. In addition, depending on the situation, you may want to update some of the following items when you have a qualifying event, although most of these items may be changed at any time: Covered dependents for medical and/or dental coverage, life insurance beneficiaries, retirement plan beneficiaries, tax withholdings on Form W-4, address change, or emergency contact(s). For more information or to make a change to your benefits within the 31 days of the qualifying event, contact the Benefits Office, Bldg. 185, Ext. 2877, Ext. 5126 or call (800) 353-5321.

Jazzercise Classes Begin, 5/11

From Thursday, May 11, jazzercise classes will be held on Tuesdays and Thursdays, noon -1 p.m. at the Recreation Hall. The fee is \$67.50 and includes six weeks of classes, two sessions per week, and also allows registrants to use the membership at any Jazzercise location in Shirley, Miller Place, or Port Jefferson, Holbrook, and Farmingville. Contact: Joanne Rula, Ext. 8481, or jrula@bnl.gov.

Introduction to Yoga Class, 5/17

As part of the Health Promotion Program’s “Rise & Shine” Program, BNL’s Ila Campbell will present an introduction to yoga class on Wednesday, May 17, from 12:10 to 12:50 p.m. in the Brookhaven Center North Room. For more information, contact Michael Thorn, Ext. 8612 or mthorn@bnl.gov.

CALENDAR

— THIS WEEKEND —

Friday, 5/ 5

***‘EstrogenFactor 5.5’ Concert**
8 p.m. Berkner Hall. Sponsored by the BNL Music Club, local musicians Cathy Kreger and Marci Geller will perform. Tickets, \$15 each, are available at the BERA Store. See page 4.

Saturday, 5/6

***Hospitality Bus Trip to NYC**
9 a.m. Depart from Recreation Hall., return from New York City at 6 p.m. See below, left.

***Japanese Spring Festival**
10 a.m.-4 p.m. Berkner Hall. Haru Matsuri Spring Festival in honor of Asian Pacific American Heritage month. Tickets, adults, \$10, children 5-12, \$5, at the BERA Store. See page 4.

— WEEK OF 5/8 —

Wed-Fri., 5/10-12

Eugene Cronkite Symposium
Berkner Hall. Symposium honoring Eugene Cronkite” “Pathophysiology & Molecular Biology of Hematopoiesis, Malignancy & Radiation Response.” All are welcome. See <https://www.bnl.gov/cronkite/>.

— WEEK OF 5/15 —

Mon.-Wed, 5/15-17

***NSLS/CFN Users Meeting**
5/15, 8:30 Berkner Hall. All are invited to the morning's plenary sessions, free of charge. For registration, agenda, workshops, see www.nsls.bnl.gov/users/meeting.

Mon.-Fri., 5/15-19

National Bike-to-Work Week
Bike-to-Work Day, 5/19. See www.bikemonth.com.

Wednesday, 5/17

415th Brookhaven Lecture
4 p.m., Berkner Hall. Ivan Bozovic, Condensed Matter Physics & Materials Science Department, will talk on a forefront atom-by-atom layering technique to build copper-oxide superconductors.

Friday, 5/19

Meditation Talk, Instruction
Noon-1 p.m. Berkner Hall. Clinical Psychologist Cheryl Kurash will give this free talk on meditation. All are welcome. Contact: Michael Thorn, Ext. 8612or mthorn@bnl.gov.

***Taipei Folk Dance Theater**
6:30 p.m. Reception, 7:30 p.m., performance in Berkner Hall. In honor of Asian Pacific American Heritage Month. All are welcome. Tickets must be bought in advance. Adults, \$10, children 512 and students with ID, \$5. See story, page 4.

— WEEK OF 6/5 —

Tuesday, 6/6

Retirees' Get-Together Lunch
Noon-4 p.m. Bellport Country Club. Good food, prizes, surprises, entertainment. Visit www.brea.bnl.gov for details.

Note: This calendar is updated continuously and will appear in the Bulletin whenever space permits. Submissions must be received by the preceding Friday at noon to appear in the following week’s Bulletin. Enter information for each event in the order listed above (date, event name, description, and cost) and send it to bulletin@bnl.gov. Write “Bulletin Calendar” in the subject line.



Wheel in *barrow*loads of food for the BNL Food Drive!

Classified Advertisements

Placement Notices

The Lab's placement policy is to select the best-qualified candidate for an available position. Candidates are considered in the following order: (1) present benefits-eligible employees within the department/division and/or appropriate bargaining unit, with preference for those within the immediate work group; (2) present benefits-eligible employees within the Laboratory; and (3) outside applicants. In keeping with the Affirmative Action Plan, selections are made without regard to age, race, color, religion, national origin, sex, disability or veteran status. Each week, the Human Resources Division lists new placement notices, first, so employees may request consideration for themselves, and, second, for open recruitment. Because of the priority policy stated above, each listing does not necessarily represent an opportunity for all people. Except when operational needs require otherwise, positions will be open for one week after publication. For more information, contact the Employment Manager, Ext. 2882. Access current job openings on the World Wide Web at www.bnl.gov/HR/jobs/.

OPEN RECRUITMENT – Opportunities for Lab employees and outside candidates.

MK3936. ASSISTANT PHYSICIST (S-1) – Requires a Ph.D. in accelerator physics with experience in the area of storage rings. Proficiency in the computer simulation code “Elegant” will be significant plus. The successful candidate will be involved in research and development on the NSLS-II accelerator systems, particularly the IR ring. An example of the specific task includes beam dynamics studies related to its operations with ultra-short bunches in the CSR mode. This will include both computer simulations and experimental work at the present NSLS VUV/IR ring. The candidate will also be contributing to the development of other areas of NSLS-II system, such as developing a scheme to produce short x-ray pulses. The candidate is also expected to contribute to accelerator physics support of the existing NSLS facility, such as working on the vertical coupling on the x-ray ring and improving injection efficiency into the x-ray ring from the booster. Work under the supervision of NSLS II Accelerator System Division Director, National Synchrotron Light Source II Project.

MK3584. ASSISTANT PHYSICIST (S-1) – Requires a Ph.D. in experimental relativistic heavy ion physics plus at least one year's experience beyond the Ph.D. Experience with both detector hardware and the use of modern computing tools for detector simulation and data analysis and experience with the detector systems and related physics analyses is preferred. Position is with the PHENIX Group that is a large, multipurpose detector, performing forefront research in the study of relativistic heavy ion and polarized proton collisions at the highest available energies. PHENIX explores a broad area of physics which emphasizes the study of hot, dense nuclear matter and the search for new effects such as a possible phase transition to a quark-gluon plasma in heavy ion collisions, as well as the origin of the proton spin in polarized proton interactions. Will devote 100% of effort to RHIC physics divided roughly 50% on PHENIX detector/operations/upgrades and 50% on physics analysis. Under the direction of M. Tannenbaum, Physics Department.

MK3812. ASSISTANT SCIENTIST (S-1) – Requires a Ph.D. in nuclear engineering or physics, experience in designing and constructing high-pressure noble gas ionization chambers for gamma ray spectrometry. A working knowledge of methods for detecting ionizing radiation, e.g. analog and digital electronics for pulse processing, gamma spectroscopy, gas detectors, scintillators detectors, semiconductor detectors and neutron detectors is also required. Hands-on experience in the design and construction of compressed xenon spectrometers or scintillator-based detectors would be an advantage. Will join a team that is working on new designs of xenon spectrometer tubes, directional neutron detectors and associated electronics. Work will involve the design, construction and testing of prototype practical, large volume radiation detectors for the interdiction and identification of Special Nuclear Materials. Under the direction of P. Vanier, Nonproliferation & National Security Department.

MK3813. POSTDOCTORAL RESEARCH ASSOCIATE – Requires a Ph.D., hands on experience in fabricating and testing radiation detectors using compound semiconductors such as Cadmium Zinc Telluride (CZT). Research will involve cutting, polishing, etching and surface passivation of crystals followed by the application of electrical contacts. The assembled detectors will be tested with standard gamma-ray sources and the quality and uniformity of different samples of material obtained from various vendors will be determined by a number of analytical techniques including x-ray mapping using a beam line at the NSLS. Additional device fabrication of detectors from GE using ferromagnetic contacts may also be required. Under the direction of P. Vanier, Nonproliferation & National Security Department.

MK3684. POSTDOCTORAL RESEARCH ASSOCIATE – Requires a Ph.D. in physics or a related field, the ability to travel in the U.S. and abroad and a detailed understanding of beam physics and nonlinear dynamics. Familiarity with beam dynamics simulations is desirable. Research will involve the experimental and theoretical analysis of problems such as beam-beam effects, or luminosity monitoring and problems relevant to both the Relativistic Heavy Ion Collider at BNL, and the Large Hadron Collider at CERN. Under the direction of T. Satogata and A. Drees, Collider-Accelerator Department.

JH3938. SR. PROJECT CONTROLS SPECIALIST (2 positions, A-8) – Requires a bachelor's degree or equivalent in a related discipline plus 10 years of professional cost/scheduling experience. Equivalent knowledge may be obtained through a combination of education and/or experience. Working knowledge of cost estimating, budgeting and control is required, as well as knowledge of Earned Value Management System processes and requirements. Must be proficient in Primavera (P3E) software or Openplan; scheduling theory, techniques and methodologies; project management principles; and Microsoft Office Suite and Project. Solid analytical and reasoning skills and proven ability to develop solutions to complex problems is required. Must possess strong interpersonal, communication and time management skills. Must be a self-starter, a team player and able to perform independently. Experience in a DOE project environment and Cobra cost processing software is preferred. Candidate will report to the NSLS-II Project Controls Manager and will implement cost and schedule project planning and control functions for a large engineering project either in the Experimental Facilities Division or the Accelerator Systems Division from the earliest stages of project planning through execution and closeout. Selected candidate will draw upon an advanced understanding of project management methodology, project control principles, and hands-on experience with Primavera or Openplan to successfully manage work, resources, and dollars using project controls tools. Responsibilities include implementing all aspects of an earned value management system, which consists of developing a fully integrated resource loaded schedule; assisting technical management in developing resource requirements to support the project cost estimate; analysis of the project schedule using critical path methodology; managing changes to the schedule and/or baseline; generating performance measurement monthly reports for the management team; interfacing with project technical staff to define scope of work, baseline changes variance analysis, and implementation of corrective actions; presenting project data at meetings or external reviews; and supporting the development and deployment of new techniques and tools. Candidate will be responsible for developing templates, serving as a scheduling tool expert, and advising program managers on the maintenance of their schedules. May act as lead in the manager's absence. In addition the candidate will prepare reports based on schedule and cost data at multiple levels of the WBS. National Synchrotron Light Source II.

JH3939. PROJECT CONTROLS SPECIALIST (A-6) – Requires a bachelor's degree or equivalent in a related discipline and at least 4 years of professional cost/scheduling experience. Equivalent knowledge may be obtained through a combination of education and/or work experience. Must have working knowledge of cost estimating, budgeting and control and must be familiar with earned value management system terminology. Expertise in the use of Microsoft Office products, including Excel, Word, Access, and PowerPoint, and familiarity with Primavera or Microsoft Project software is required. Must be a self-starter, a team player and able to perform with minimal supervision. Experience in a DOE project environment is preferred. Candidate will report to the NSLS-II Project Controls Manager and will work with senior staff to support the development of the NSLS-II cost estimate and cost/schedule performance measurement baseline. Responsibilities include providing support for monthly reporting of project performance measurement data including tracking, analyzing, and reporting project cost and schedule data. Candidate will input activities, relationships and resources into scheduling package to support a resource loaded schedule and will assist technical management in assigning resource requirements from the project cost estimate into the activities in the schedule. Candidate will also interface with project technical staff to define and incorporate baseline changes. Will assist with project reporting to include generating monthly performance measurement reports for the management team, preparing variance analysis reports, preparing project data for project meetings or external reviews, and ensuring timely collection and interpretation of schedule data within the project control database. The candidate will also be expected to support the development and deployment of new techniques and tools. National Synchrotron Light Source II.

TB2694. PROJECT ENGINEER II (P-7) – Requires a bachelor's degree in an engineering discipline or equivalent technical discipline and five years' project management experience. Excellent oral and writ-

ten communication skills, knowledge of Microsoft Project, experience developing project plans, work planning and execution, program development and implementation, managing projects with respect to QA/QC, deadlines and budget also required. Must also be capable of prioritizing assignments and facilitating staff completion of programmatic activities. Familiarity with SBMS Subject Area development and production, BNL policies and procedures and safety – related regulations and standards desirable. Responsibilities will include assisting the S&HS Division in developing assessment tools and performing assessments, preparing and implementing corrective action and work plans, disseminating Quality information to organization staff, preparing, coordinating and assessing the implementation of Quality requirements as documented in SBMS Management Systems, Program Descriptions and Subject Areas, and coordinating with the Quality Management Office as needed regarding the BNL Quality Assurance Program and quality related concerns. Safety & Health Services Division.

TB3963. MEDICAL ASSOCIATE IV (P-1) – Requires a BS or BA in biology with a minimum of one year's related experience in animal physiology, pharmacology, biochemistry, cell biology and molecular biology. Must have experience in handling animals (primarily rodents), basic knowledge of and demonstrated skills in, anesthesia, euthanasia, microsurgery and necropsy in rodents. In addition, good communication skills and the ability to work in a group setting is also required. Under general supervision will support experimental studies on radiation biology and neurotoxicology. Duties will include assisting the logistic support of NASA users in the execution of heavy ion radiobiology experiments using NASA Space Radiation Laboratory (NSRL) facilities. Responsibilities include the execution and planning of experiments; protocols, maintenance and operation of tissue culture, animal care facilities, as well as perform routine computer operations. Employment is contingent upon the successful completion of a DEA background check. Medical Department.

TB3685. TECHNICAL SPECIALIST (T-2) – Requires an AAS degree in electronic technology or equivalent and at least four years of relevant work experience. Must be able to work mandatory overtime and be available during nonscheduled hours to respond to C-A operations as required. Must also have excellent working knowledge of digital electronics, testing complex FPGA digital circuits using logic analyzers, digital and analog oscilloscopes, basic test equipment, circuit board surface mount assembly techniques, elementary electronic design, and basic mechanical fabrication techniques. Familiarity with PLC hardware and AutoCAD LT or other CAD software is desirable. Under minimum supervision, will perform a variety of evaluation, fabrication, testing, troubleshooting, modification, and maintenance operations on electric circuits. Collider-Accelerator Department.

Miscellaneous

HOSTA PLANTS - variegated, all sizes. 689-9234.

TREES - Spruce, white pine & fir. B&B, 5-8 ft., \$45-65 avg., Ext. 4507 or 878-1060.

YANKEE TICKETS - Toronto Blue Jays. 2 seats Sec. 635, Row A, Sat, 4/29, 1:05 p.m., face value. 965-0344.

TICKETS - Mets, Tues. & Fri games avail., 2 seats, Loge Sec 5, Row G; face value. 751-7023.

Yard & Garage Sales

MORICHES - 2-fam. yard sale, 5/13 & 14, 9 a.m., Hulse La. off Barnes Rd. Ext. 3256.

WADING RIVER - 12-family sale in Great Rock. Sound Ave. to Fairway Dr. Sat/Sun, 5/6-7, 9 a.m. Ext. 5744 or 929-4440.

Community Involvement

Wanted: Donations of household and personal items for Hope House Ministries, where people with problems are sheltered while they get help and treatment to start anew. Examples are: cleaning supplies, paper goods, toothpaste, shampoo, etc. Anything you can give will be appreciated. Drop them off to Joe Indusi, Bldg. 197C.

In Appreciation

I would like to thank my BNL friends for your kindness during my surgeries. I truly appreciated your visits, calls, cards, flowers, gifts, food and prayers. Your thoughtfulness meant so much to me during those difficult days.

— Melanie Covitz

Due to lack of space in this issue of The Bulletin, most classified ads were omitted from this week's printed edition. However, the ads appear on a fifth page of the Bulletin pdf file, which is available on the web at www.bnl.gov/bnlweb/pubaf/bulletin/2006/bb050506.

‘EstrogenFactor 5.5’ Cathy Kreger, Marci Geller in Concert, 5/5



Marci Geller



Cathy Kreger

A concert titled “Estrogen Factor 5.5,” featuring two local musicians, Cathy Kreger and special guest Marci Geller, will be held tonight, Friday, May 5, in Berkner Hall, at 8 p.m. Sponsored by the BNL Music Club, the concert is open to the public. All visitors to the Lab age 16 and over must bring a photo ID.

Cathy Kreger's music combines adult contemporary and old blues with an alternative folk flair. Her acoustic guitar prowess has been critically acclaimed, and her voice has been characterized as “a warm, rich emotional mirror of her soul.” Marci Geller will open the show with piano-based songs that peek into her musical diary, which has been called “poetry in motion.” The evening will conclude with the two women joining together on stage with Kreger's band, “What it Iz,” for a powerful finale to the concert.

Tickets cost \$15 each and can be purchased in advance at the BERA Store until 3 p.m., at www.ticketweb.com, or at the door this evening.

Japanese-American Festival Tomorrow, 5/6

A Japanese-American Friendship Spring Festival will be held tomorrow, Saturday, May 6, 10 a.m.-4 p.m. in Berkner Hall. This program is made possible in part with grants from the New York State Council of the Arts and the Huntington Arts Council. Sponsored by the Lab's Asian Pacific American Association in collaboration with Ryu Shu Kan of Farmingville and the Unitarian Universalist Fellowship of Huntington, the festival will be held in honor of Asian Pacific American Heritage Month. The event is open to the public. All visitors to the Lab age 16 and over must bring a photo ID.

The festival will feature traditional Japanese *taiko* drums, folk dance and music, martial arts demonstrations, Japanese ink painting, calligraphy, flower arrangements, embroidery, Haiku poetry, and a Japanese tea ceremony. Children's activities will include origami, dressing in a kimono, and more. Tickets are: adults, \$10; children age 5 -12, \$5; and children under 5, free. Buy tickets at the BERA Store or at the door of the event.



Junko Nagahama-Fisher performs the Okinawan Royal Court Dance.

Taipei Folk Dance Theater, 5/19

The Taipei Folk Dance Theater, the first professional ethnic dance company in Taiwan, will perform in Berkner Hall on Friday, May 19, at 7:30 p.m. A reception will be held, along with an opportunity to view an exhibit from Taiwan, before the performance, starting at 6:30 p.m.

Held in honor of Asian Pacific American Heritage Month and Taiwanese American Heritage Week, the performance is sponsored by two BERA clubs at BNL — the Asian Pacific American Association and the BERA Social & Cultural Club — with the Suffolk County Office of Minority Affairs. The Overseas Chinese Affairs Commission and the Taiwanese-American Association on Long Island played a major role in bringing the dancers to the U.S. and, specifically, the New York metropolitan region. The event is open to the public. All visitors to the Lab age 16 and over must bring a photo ID.

Tickets must be purchased or reserved in advance. They are available in the BERA Store, Berkner Hall, on weekdays, 9 a.m.- 3 p.m. Tickets cost \$10 each, \$5 for children under 12 and students with a student ID. Tickets may also be reserved via telephone and picked up at the door on the evening of the performance. For reservations or for more information, call Ext. 7988.



The Taipei Folk Dance Theater

Motor Vehicles & Supplies

04 FORD F350 Lariat - diesel, crewcab, 8'bed, spray liner, cap, factory warr. every option. 26K mi. \$33,500/neg. Richard, Ext. 5319 or 835-8309.

04 CROSSROADS CRUISER - 30' trailer, dbl. slide, queen br, lg. bath, bunks, lots of storage, excel. cond., used 5 times. \$21,500/neg. Paula, 924-0139.

03 MAZDA MPV ES - van, V6, 7 pass., loaded, leather, pwr. sliding drs., 6-CD stereo, sunroof, side airbags, roof rack. 35K mi. \$15,250/neg. Paul, Ext. 7644 or 929-4295.

01 DODGE GRAND CARAVAN SPORT - silver, v6, all power, 1st owner. 80K mi. \$11,500/neg. Nelly, 516-984-4440.

99 KIA SPORTAGE - 4x4, 5spd., manual trans., 4 cyl., new batt. and starter, very good cond., set up to be towed by RV. 50K mi. \$4,300. John, Ext. 7018.

94 PLYMOUTH GRAND VOYAGER - very good cond., 6cyl, p/s, abs, p/w, p/l, c/c, am/fm/cass., roof rack, 4 new Michelins, well maint. 164K mi. \$2,500/neg. Phil, Ext. 5669.

85 HONDA MAGNA - VF 700C, 6 spd., clean, bags, new tires (<500 miles), shield, shaft. 36K mi. \$1,450/neg. Victor, Ext. 2271 or 484-1133.

Boats & Marine Supplies

19 ft.' GRADY WHITE TOURNAMENT - 130 hp Yamaha, Magic Tilt trailer, full encl., VHF, DF, swim platform and more, ready to go. \$7,500. 878-8302.

23' PEARSON P23K - 4 berths, 3 sails, fixed lead keel, head, galley, 4' draft, well maintained. \$3,900. Ext. 2788.

24' 2000 SEARAY SUNDANCER - Mer-cruiser Bravo III, full head, kit., shore power, 120 hrs, 2001 trailer, used for day trips only. \$34,999/neg. Daniel, Ext. 7658 or 495-2596.

25' MORGAN SAILBOAT - \$3,500. Peter, Ext. 5636.

26' CRUISERS CABIN CRUISER - sleeps 6, hot/cold shower, am/fm/cass., v.clean & low hrs. \$11,500. John, 543-7065.

8' FIBERGLASS DINGY - w/oars, used only 1 season. \$300. 689-9234.

MUSHROOM ANCHOR - 250 lb. w/buoy, chain, and pendant line, \$150. John, 543-7065.

Furnishings & Appliances

BEDFRAME - Queen size, metal, brand new, still in box, best offer. 331-3765.

CRIB & CHANGING TABLE - matching set, excel. cond., white wood, pics avail. \$200 obo. 331-3765.

CURIO SHELF - excel. cond., black metal, arched design, 4 glass shelves, pics avail. 331-3765.

DEHUMIDIFIER - White-Westinghouse model MDH25WW1, 120 volts, 25 pints, 24 hours, like new. \$75. Ted, Ext. 2620 or 943-5161.

ENTERTAINMENT CENTER - excel. cond., black, storage on sides, shelves w/glass doors, fits up to 32" TV, pics avail. 331-3765.

FREEZER - upright, 9 cu. ft. Frigidaire, like new, \$150. John, 543-7065.

REFRIGERATOR - white, Frigidaire, 21.7 cu. ft., 6 yrs. old. \$200. Kenneth, Ext. 4660.

SECTIONAL SOFA - gray velour fabric w/pindot pattern, excel. cond., ask \$300. Artie, Ext. 5937.

WASHER - moving sale, excel. cond. \$50. Ext. 2559.

Audio, Video & Computers

BOOKSHELF STEREO - JVC, am/fm, 5 cd w/real wood speakers and exceptional sound quality. \$75. Artie, Ext. 5937.

CAR STEREO - Pioneer, 50W/channel, CDR/RW/MP3/WMA playback, steelite/iPod compatible, blue OEL display/screensaver, \$200. Laura, Ext. 7842 or 434-5824.

Sports, Hobbies & Pets

BICYCLE - women's Raleigh grand prix, 10-spd., quick-release wheels, gd. cond. \$45. 473-6546.

BICYCLES - men's 10 spd., 27", lg. frame, \$40; Mountain bike, 26", 18 spd., \$50, gd. cond. Walter, 567-9025.

BIKE - men's, Ross, 25" frame, 10-speed, exc. cond. \$35. Ted, Ext. 2620 or 943-5161.

EXERCISE BIKE - Tunturi Recumbent F505 stationary bike, excel. cond., pics avail. Ask \$160 obo. Gary, Ext. 2155.

TICKETS - Mets, Tues. & Fri games avail., 2 seats, Loge Sec 5, Row G; face value. 751-7023.

WINDSURFING RIGS - 2 boards, 5 sails, 2 C-fiber masts, etc., beginner & adv. levels, some new, excel. cond. Geoffrey, 878-0898.

Tools, House & Garden

BLOWER/VAC - electric, good cond., runs well, w/leaf bag. \$25. Artie, Ext. 5937.

HONDA LAWNMOWER - Harmony model, self propelled, mulching/high lift blades, rear bag incl., good cond. \$150. Artie, Ext. 5937.

HOSTAS PLANTS - variegated, all sizes. 689-9234.

LAWN MOWER - 2004 Sears Craftsman model 917-378851, 22", 6.75hp, self-prop, mulcher, rear clippings bag, well maint. Phil, Ext. 5669.

WEEDWACKER - gas, good cond., runs well. \$25. Artie, Ext. 5937.

Miscellaneous

600W GENERATOR - Quiet Yamaha generator for RV use. Good for small lighting loads and charging batteries. \$275. Jim, Ext. 8236 or 365-6116.

AQUARIUM - 45 gal., incl. filter, heater, UV sterilizer, glass cover, light, custom-built stand, more. Bill, 886-1182.

CHANDELIER - sm., for foyer, bathroom or dining rm., brand new, in box, \$100. Ari, Ext. 4863 or 369-4642.

POOL SUPPLIES - Filter, skimmer, pump, motor & solar cover for 16x32 oval pool. Asking \$200. 929-5864.

TRACTOR - John Deere 1941 Model A, restored to like new cond., converted to 12 volts, new batt., \$4,500. Bill, 886-1182.

Happenings

SUB CAFE - 2 p.m., Sun., 4/23, show features Tom Russel w/Andrew Hardin, \$20, \$15/students. gpalaia@notes.cc.sunysb.edu.

Free

BED - twin, mattress, frame, boxspring, you pick up. Cathy, Ext. 5241.

CURTAIN - ceiling to floor, 7.5' H x 12' L, light gray, polyester w/cloth backing, and attachments. Ext. 4762.

TIRE - Goodyear Wrangler RTS 235-75-15, more than 50% treadlife remains. Artie, Ext. 5937.

Wanted

STRINGS - String players for Sound Symphony, Thurs. rehearsals at 7:30 p.m. at WlIm. Flyd. HS. www.soundsymphony.org. Mona, Ext. 5056.

VENDORS - handmade crafts or spe-

cialty items for the BNL Market Day on Wednesdays from June through September. Joanne, Ext. 8481.

WOOD CHIPS - will pick up. Joann, Ext. 7459 or 929-1981.

For Rent

COOPERSTOWN - Summer weekly rental. Beautiful 4 bdrm house. Exactly 7 mi from center of town. All new appliances, incl w/d. Fully furnished. Sleeps 8 comft \$875/wk. Rick, Ext. 3005 or 874-9639.

FARMINGDALE - 4 bdrm., 2 bath, all new kit./bath, s/s appl., near golf course, hot tub/spa, great back yard, newly painted, great SD, lots of room for all. \$2,600/mo./neg. Paul, 516-633-7275.

FARMINGVILLE - 1 lg. bdrm. in house, share bath w/1, full kit., elec incl., avail. 4/1. \$450/mo. Ben, 513-8275.

HOLBROOK - 1-bdrm. apt., 2nd flr., full kit. & bath, comb. l/r, d/r, no smkg/pets, util. incl., + sec. \$800/mo. Fred, 588-2268.

HOLBROOK - 1 bdrm., eik, l/r, office, full bath, pvt. ent./yard, includes elec., heat, internet, and cable, references & security req. \$1,000/mo. Ian, 588-2098.

JAMAICA, WI - silver sands, cottage-style villa, scenic, uncrowded, near Monteo Bay, full domestic service, sleep 6, tennis courts, more, summer rate \$1,760/wk. Maurice, 928-6930.

KISSIMMEE, FL - 3 miles to Disney, 5 bdrm/4 bath home w/conservation view, pvt. pool/spa, game room, community tennis, www.family-vacation-homes.com \$1,120/wk./neg. Carrie, 889-5303.

LAKE GEORGE - Lakefront cottage, 3 bdrm., 1 bath, 2 decks, gas grill, screened-in porch, outdoor f/p, dock, canoe. Hulet's Landing. avail. 7/1-8, and 8/12-19. \$1,700/wk. Debbie, 518-747-7821.

MASTIC BEACH - 1-bdrm. apt., lg. l/r, lots of closets, clean, pvt., all incl. \$1,000/mo. Annamarie, 878-8967.

MILLER PLACE - share lg. furn. non smkg. Colonial house in prof. resid. area, backyard deck, internet, cac, tv cable, own w/w 14x12 bdrm. 10 mi. to BNL. \$675/mo. 744-8386.

PORT JEFF TOWNHOUSE - 3 bdrm., 1 bath, nice kit., d/r, l/r, \$1,500/mo./neg.; Another house - 2 bdrm., 1 bath, kit., l/r, Comsewogue School Dist. \$1,200/mo./neg. 331-8090, leave msg..

PORT JEFFERSON - 1-bdrm. apt., 1st flr., pvt. ent., full kit. & bath, comb. l/r, d/r, no smkg/pets, util. incl., + sec. Village Park / beach rights, 30 min to Lab. \$1,200/mo. Ext. 5430.

RIDGE - 1 lg. studio, bright & warm, w/full bath, priv. ent. and fenced garden, house apart from owner, park in drway, quiet & safe n'hood. \$700/mo. Zhen, 821-0859.

RIDGE - 3 bdrm, kit, l/r, fin. bsmt, gar., .5 acres, no pets, avail. now, + util. \$1,650/mo. JoAnn, 924-4147.

S. SETAUKET - 2-bdrm. apt., bath, kit., a/c, w/d, Internet, cable, 9 mi, http://tinyurl.com/s8s4e \$1,000/mo. Lin, Ext. 4508 or 698-2891.

SHOREHAM - summer rental (June, July, August) ranch, 3 bdrms., 1 bath, l/r, den, kit., w/d, 1-car gar, lg. yard, utilities extra. \$1,800/mo. 258-4607.

WADING RIVER - 2 bdrm., eik, lg. l/r, lg. den, lg. deck, pvt. pkg., no kids/pets/smkg. util. extra. \$1,500/mo. 928-9328.

YAPHANK - 2 bdrm., l/r, kit., full bath, lg. yd., + util \$1,000/mo. Christopher, 436-6357.

For Sale

BLUE POINT, NY - charming, 3-bdrm home in great neighborhood, 2-bath, l/r w/fp, gar., porch, deck, and low taxes, easily convert to include apt. w/sep ent. \$525,000/neg. 766-1885.

BRIGHTWATERS, NY - Brightwaters Village, 4-bdrm. Colonial, diamond cond. \$689,000 516-810-6555.

CENTEREACH, NY - 4-yr.-old Center Hall Colonial, 5 bdrm., 2-1/2 baths, eik, great room, d/r, finished bsmt., f/p, 1st flr laundry, 20 min to Lab and 5 min to SBU. \$509,990 PHYLLIS, 981-2471.

EAST QUOGUE, NY - new 2/2 condo upper unit, 1-car gar., sr. commty., cust closets, 42" cabinets, tiled baths, cac, maint. free, low comm. chgs./taxes, excel. cond. \$629,900/neg. 723-0770, leave message.

EAST SETAUKET, NY - 6 yr. young, 4 oversized bdrms., 2-1/2 bath, l/r, d/r, 2-car gar, f/p, full bsmt., deck, lg. kit., more, .63 acre, cul-de-sac, 3 Village SD. \$765,000/neg. Jen, 229-3119.

MANORVILLE, NY - 3-bdrm., 2-bath house, legal 2-bdrm. apt., detach 2.5-car heated gar. on 1+ acre, great location. \$619,000 208-3875.

MASTIC, NY - 2003 Victorian, 3 bdrm, 1.5 bath, F/bsmt, gar, huge yard w/20x40 deck, arch windows, close to school, beach, golf & shopping, 15 min. to Lab. \$339,000/neg. Nicole, 525-4416.

MILLER PLACE, NY - comfortable, airy 4-bdrm. Colonial, 2-1/2 baths, lg. eik, d/r, l/r, fam. rm, gar, best school district in Suffolk Co. 20 min.to Lab and SBU. \$475,000/neg. 473-4715.

MILLER PLACE, NY - 3-yr.-old Colonial, 4/5 bdrm, 2.5 bths, lr, dr, eik w/stainless steel appl, great room w/fp, bsmt., hwd flrs, cac, fenced 3/4 acre landscape, koi pond \$779,900/neg. Linda, 642-8043.

PORT JEFFERSON, NY - historic Victorian, mint, in village center, 4 bdrm., 2 bath, 2 parlors, gas f/p, FDR, renov. kit., 1 + attics, bsmt., cac, gas heat & hw, views, igp. \$769,000/neg. 804-4662.

PORT JEFFERSON, NY - historic Victorian in ctr. village, 4 bdrm., 2 bath, 2-l/r, d/r, gas f/p, renov. eik, pool, waterfall, views, attic, gas heat, cac. \$759,000/neg. 804-4662.

PORT JEFFERSON, NY - historic Victorian in ctr. village, 4 bdrm., 2 bath, 2-l/r, gas f/p, d/r, renov. eik, pool, waterfall views, attic, gas heat, cac. \$759,000/neg. 804-4662.

PORT JEFFERSON STA., NY - hi-ranch, mint+, 3 bdrm., 2 bath, updated kit, l/r, windows, office, fully renovated bath, new roof (w/warranty), great location, well-priced. \$419,999/neg. Milind, Ext. 3327 or 331-6725.

RONKONKOMA, NY - split lvl. ranch, 2,000 sq. ft., 4 bdrm., 2.5 bath, new kit., fin. bsmt., pool, sprinklers, Sachem dist, 2 drv. wys., a/c, attic, excel. cond. \$429,000/neg. Camille, 738-0739.

SHOREHAM, NY - north of 25A, updated L-ranch, 5 bdrm, 3 baths, lg. fam. rm. w/fp, eik, d/r, l/r, fin. bsmt. w/2 bdrms, full bath, summer kit., igp, top schools, more \$435,000 lila, 849-2984.

SHOREHAM, NY - Dutch Colonial, 4 bdrm., 2 bath, d/r, l/r, lg. fam. rm., wood flrs., new lg. kit., new appliances, 1-car gar, igp, fenced yrd., family neighborhood. \$510,000/neg. 258-4607.

SHOREHAM, NY - north of 25A, updated L-ranch, 5 bdrm, 3 bath, lg. fam. rm. w/fp, eik, d/r, l/r, all wood, flrs., fin. bsmt, w/2 bdrm, 1 full bath, summer kit., more \$435,000 849-2984.