

### Ralph James Honored With IEEE Harold Wheeler Award

The Institute of Electrical & Electronics Engineers (IEEE) Long Island Section has chosen Ralph James as the recipient of the Harold Wheeler Award. James is BNL's Associate Laboratory Director for Energy, Environment & National Security. Wheeler was a world-famous engineer, who made important technical contributions at Wheeler Labs and Hazeltine Corporation. The IEEE Long Island Section has about 3,000 members.

James will receive the award on April 13 at an IEEE meeting in Melville, Long Island. Specifically, he will be honored for "outstanding management and enduring technical accomplishments in nonlinear optics, lasers, infrared through gamma-ray detectors, and portable instrumentation for spectroscopy and imaging."

In his current position, James is in charge of 241 staff members in the Environmental Sciences Department, the Energy Sciences and Technology Department, and the Nonproliferation & National Security Department. All together, these departments are working on over 700 scientific projects funded by more than 50 sponsors, from federal agencies to private companies. The projects encompass a wide range of basic and applied research, including aerosol chemistry and how it affects air pollution and global warming; research in biological and chemical processes to produce ultra-clean fuels; and the development of new technology to safeguard nuclear materials.

James does his own research in several areas, including how to make infrared lasers work effectively for a wide variety of applications, from medical to the military. Funded by DOE's Office of Nonproliferation Research and Development, James developed a new class of small semiconductor-based radiation detectors that can efficiently detect both x-rays and gamma rays at room temperature, and they can identify specific isotopes responsible for radiation. He also developed lightweight, hand-held instruments incorporating these detectors. Many of the detectors have been commercialized, and applications include medical imaging, nuclear nonproliferation, envi-



Roger Stoutenburg D0060905

ronmental monitoring and nuclear and space sciences.

After earning a B.S. in engineering physics from the University of Tennessee at Knoxville, in 1976, James earned an M.S. in physics from the Georgia Institute of Technology, in 1977; another M.S. in applied physics from the California Institute of Technology (Caltech), in 1978; and a Ph.D. in applied physics from Caltech, in 1980. He was a Eugene P. Wigner Fellow at DOE's Oak Ridge National Laboratory from 1981-1984, and, in 1984, he joined the staff of DOE's Sandia National Laboratories, where he worked as a distinguished member of the technical staff. In June 2001, James came to Brookhaven Lab to assume his current position.

James holds nine patents, has authored or co-authored more than 350 scientific publications, and has edited 15 books. In addition, he is recognized for a long history of mentorship and leadership contributions to professional societies. For example, he has served as chair or co-chair of over 20 international conferences sponsored by scientific and engineering societies.

James's scientific accomplishments in the area of advanced radiation detectors won him *Discover* magazine's "Innovator of the Year" award in the field of imaging in 1997. He also is a four-time winner of *R&D Magazine's* R&D 100 Award, which honors the top 100 inventions of the year, and the National Association for Seed and Venture Capital Funds selected James as co-winner of one of the "World's 50 Best Technologies" awards. In 2004, James was honored with the Room-Temperature Semiconductor Radiation Detectors Scientist Award at IEEE's Nuclear Science Symposium and Medical Imaging Conference. In addition, the IEEE Nuclear and Plasma Physics Society honored James with the 2005 Radiation Instrumentation Outstanding Achievement Award.

James is a Fellow of IEEE, as well as a Fellow of the American Physical Society, the American Association for the Advancement of Science, and the International Society for Optical Engineering.

— Diane Greenberg

### BNL Purchased \$51 Million in Supplies, Services From Long Island Businesses in FY06

**Also, of Lab's about 2,600 employees, most live locally, shop on LI, adding much from \$279.5 million of salaries, wages, fringe benefits to the LI economy**

BNL purchased \$51.2 million worth of supplies and services from Long Island businesses in fiscal year 2006, a period from October 1, 2005 to September 30, 2006.

In addition to Brookhaven's buying goods and services from Long Island vendors, most of the Laboratory's approximately 2,600 employees live in Suffolk County and shop on Long Island. All told, employee salaries, wages and fringe benefits account for almost 57 percent, or \$279.5 million of the Laboratory's total annual budget of about \$490 million.

Owned and primarily funded by the U.S. Department of Energy, the Lab creates and operates major facilities available to university, industrial and government personnel for basic and applied research in the physical, biomedical and environmental sciences, and energy technologies.

In fiscal year 2006, BNL's total procurement budget was approximately \$189 million. Out of that amount, the Lab spent about \$36.5 million on 397 purchases

in Nassau County, and \$14.7 million on 2,656 purchases in Suffolk County.

Mary-Faith Healey, Manager of the Procurement & Property Management Office, which handles BNL's purchasing, said, "The Laboratory values local suppliers who understand the unique requirements of doing business on Long Island while meeting the Laboratory's dynamic needs."

BNL's top three local vendors in fiscal year 2006 were E.W. Howell Co., Inc., of Woodbury; LiRo Engineers, Inc., of Syosset; and KC Electronic Distributors, Inc., of East Setauket. By far the largest amount in FY2006, more than \$32.7 million, was paid to E.W. Howell for construction of two new buildings on the Lab site. Some \$8.5 million was paid for building the Lab's 65,000-square-foot Research Support Building, and the balance of \$24.2 mil-

lion was spent on the 94,500-square-foot Center for Functional Nanomaterials (CFN).

The total cost of the Research Support Building was \$18.2 million. The new building consolidates frequently visited administrative and support functions in a single location to provide more efficient administrative services to Lab employees and visiting scientists.

The CFN is an \$81-million facility that will greatly enhance scientists' ability to investigate the properties of materials at nanoscale dimensions, typically on the scale of billionths of a meter, or 10,000 times smaller than a human hair. The facility is due to be commissioned in May 2007.

The Lab contracted to pay approximately \$1.3 million to LiRo Engineers, Inc., for providing architectural

### Improving Fuel Cell Technology With Gold Clusters — A BNL Discovery With Patents Pending

Platinum is the most efficient electrocatalyst for accelerating chemical reactions in fuel cells for electric vehicles. In reactions during the stop-and-go driving of an electric car, however, the platinum dissolves, which reduces its efficiency as a catalyst. This is a major impediment for vehicle-application of fuel cells.

Now, scientists at BNL have overcome this problem. Under lab conditions that imitate the environment of a fuel cell, the researchers added gold clusters to the platinum electrocatalyst, which kept it intact during an accelerated stability test. This test is conducted under conditions similar to those encountered in stop-and-go driving in an electric car. The research is reported in the January 12, 2007, edition of the journal *Science*.



Roger Stoutenburg D0340107

(From left) BNL researchers Junliang Zhang, Kotaro Sasaki, Eli Sutter and Radoslav Adzic view gold clusters on a single-crystal platinum surface using a scanning tunneling microscope.

Chemistry Department researchers Junliang Zhang, Kotaro Sasaki, and Radoslav Adzic, along with Eli Sutter from BNL's Center for Functional Nanomaterials (CFN), authored the paper. The research is funded through DOE's Hydrogen Program, which implements the President's Hydrogen Fuel Initiative, a five-year program that began in 2003 to sponsor research, development, and demonstration of hydrogen and fuel cell technologies. Specifically, the funding derived from DOE's Office of Basic Energy Sciences and its Office of Energy Efficiency & Renewable Energy.

"Fuel cells are expected to become a major source of clean energy, with particularly important applications in transportation," said Adzic. "Despite many advances, however, existing fuel-cell technology still has drawbacks, including loss of platinum cathode electrocatalysts, which can be as much as 45 percent over five days, as shown in our accelerated stability test under potential cycling conditions. Using a new technique that we developed to deposit gold atoms on platinum, our team was able to show promise in helping to resolve this problem."

"The next step is to duplicate results in real fuel cells," says Adzic.

#### Patents Pending

These BNL-developed electrocatalysts and methods for making them are the subjects of pending patent applications, which are available for licensing by industry for incorporation into their fuel cell development programs.

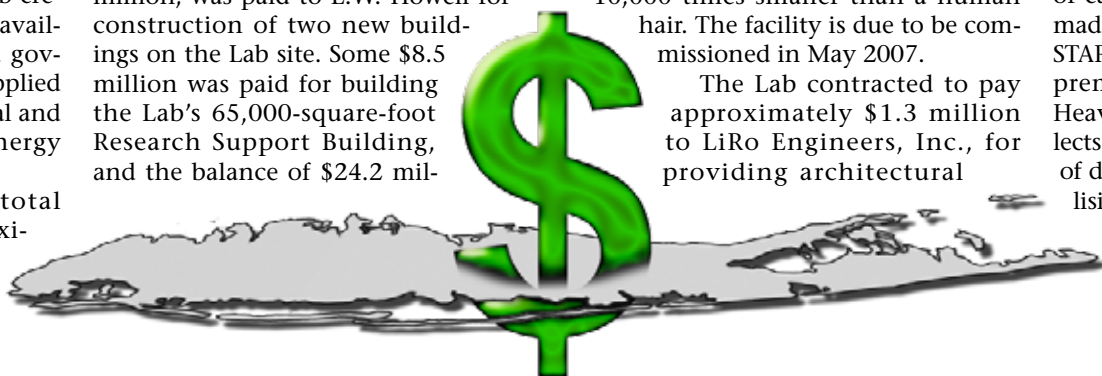
For more information, go to [www.bnl.gov/bnlweb/pubaf/pr/PR\\_display.asp?prID=07-04](http://www.bnl.gov/bnlweb/pubaf/pr/PR_display.asp?prID=07-04)

— Diane Greenberg

engineering support for the Lab's major construction initiatives, including the Research Support Building, the CFN, and the National Synchrotron Light Source II. The proposed new light source will be a state-of-the-art facility in which scientists will use x-rays that are 10,000 times brighter than those used at BNL's current light source to probe a variety of materials. Such capabilities may lead to advances in numerous scientific fields.

BNL paid about \$1.1 million to KC Electronic Distributors, Inc., for electronic equipment, including a variety of cables, of which some were custom-made, for the house-sized STAR detector. STAR is one of four detectors at the Lab's premiere accelerator, the Relativistic Heavy Ion Collider (RHIC), which collects and evaluates an enormous amount of data generated by RHIC's particle collisions. At RHIC, scientists from around the world are attempting to understand the properties of matter as it existed microseconds after the Big Bang.

— Diane Greenberg





### CALENDAR

OF LABORATORY EVENTS

- The BERA Store in Berkner Hall is open weekdays from 9 a.m. to 3 p.m. For more information on BERA events, contact Andrea Dehler, Ext. 3347, or Christine Carter, Ext. 2873.
- Additional information for Hospitality Committee events may be found at the Lollipop House and the laundry in the apartment area.
- The Recreation Building #317 (Rec. Hall) is located in the apartment area.
- Contact names are provided for most events for more information.
- Events flagged with an asterisk (\*) have an accompanying story in this week's Bulletin.

— EACH WEEK —

**Weekdays: Free English for Speakers Of Other Languages Classes**  
Beginner, Intermediate, Advanced classes. Various times. All are welcome. Learn English, make friends. See [www.bnl.gov/esol/schedule.html](http://www.bnl.gov/esol/schedule.html) for schedule. Jen Lynch, Ext. 4894.

**Mondays: BNL Social & Cultural Club**  
Noon-1 p.m., Brookhaven Center, South Room, free beginners dance lessons. Rudy Alforque, Ext. 4733, [alforque@bnl.gov](mailto:alforque@bnl.gov).

**Mondays: Pilates**  
12:15 & 5:15 p.m. Rec. Hall. Ext. 5090.

**Mondays: Jiu Jitsu Club**  
6-7:30 p.m. B'haven Center. All levels, ages 6 & up. \$10/class. Tom, Ext. 4556.

**Mondays & Thursdays: Kickboxing**  
\$5 per class. Noon-1 p.m. in the gym. Registration is required. Christine Carter, Ext. 5090.

**Mon., Tue. & Thu: Ving Tsun Kung Fu**  
Noon-1 p.m., B'haven Center, North Room. Taught by Master William Moy. Scott Bradley, Ext. 5745, [bradley@bnl.gov](mailto:bradley@bnl.gov).

**Mon., Thurs., & Fri.: Tai Chi**  
Noon-1 p.m., B'haven Center North Rm. Adam Rusek, Ext. 5830, [rusek@bnl.gov](mailto:rusek@bnl.gov).

**Tues. & Thurs: Jazzercise**  
Noon, Rec. Hall. Ext. 5090.

**Tuesday & Thursday: Aerobic Fitness**  
5:15 p.m., Rec. Hall. 10 classes for \$40 or \$5 per class. Pat Flood, Ext. 7866, [flood@bnl.gov](mailto:flood@bnl.gov).

**Tuesday & Thursday: Aqua Aerobics**  
5:15 p.m., Pool. Ext. 5090.

**Tuesdays: Welcome Coffee**  
10 a.m.-noon, apartment area gazebo. First Tuesday of every month is special for Lab newcomers and leaving guests. Lisa Yang, 979-3937.

**Tuesdays: BNL Music Club**  
Noon, B'haven Center, North Room. Come hear live music. Joe Vignola, Ext. 3846.

**Tuesdays: Toastmasters**  
1st and 3rd Tuesday of each month, 5:30 p.m., Bldg. 463, Room 160. Guests, visitors always welcome. [www.bnl.gov/bera/activities/toastmstrs/](http://www.bnl.gov/bera/activities/toastmstrs/).

**Tue., Wed. & Thu: Rec Hall Activities**  
5:30-9:30 p.m. General activities, TV, ping pong, chess, games, socializing. Christine Carter, Ext. 5090.

**Wednesdays: On-Site Play Group**  
10 a.m.-noon, Recreation Bldg. An infant/toddler drop-in event. Parents meet while children play. Petra Adams, 821-9238.

**Wednesdays: Ballroom Dance Class**  
B'haven Center, N. Ballroom. Instructor: Giny Rae. Arup Ghosh, Ext. 3974; Donna Grabowski, Ext. 2720; or Vinita Ghosh, Ext. 6226.

**Wednesdays: Weight Watchers**  
Noon-1 p.m. Michael Thorn, Ext. 8612.

**Wednesdays: Yoga**  
Noon-1 p.m., B'haven Center. Free. Ila Campbell, Ext. 2206, [ila@bnl.gov](mailto:ila@bnl.gov).

**Wednesdays: Pilates**  
5:15 p.m., Rec Hall. Ext. 5090.

**Thursdays: Reiki Healing Class**  
Noon-1 p.m., Bldg. 211 Conference Rm. Nicole Bernholz, Ext. 2027.

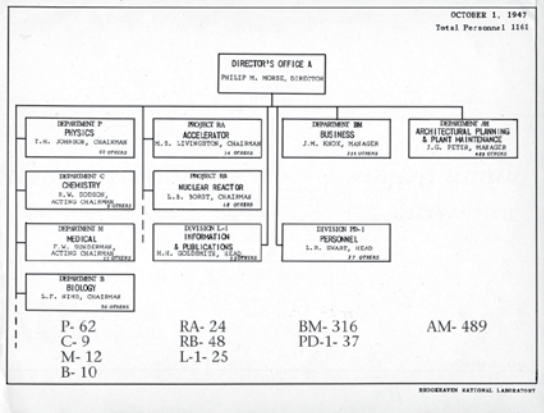
**Fridays: Family Swim Night**  
5-8 p.m. BNL Pool. \$5 per family.

**Fridays: BNL Social & Cultural Club**  
Noon-1 p.m., B'haven Center, South Room, free beginners dance lessons. 7-11:30 p.m. North Ballroom, Dance Social, workshops. Rudy Alforque, Ext. 4733, [alforque@bnl.gov](mailto:alforque@bnl.gov).

**CIGNA: Tuesdays, Bldg. 400**

A CIGNA Healthcare representative will be on site in Human Resources, Bldg 400, on Tuesdays, to assist you with any claims issues that you have been unable to resolve yourself. Janice Petgrave will be available for 30-minute meetings, by appointment only, 10 a.m.-1 p.m. Bring all pertinent documentation to your meeting. To schedule, call Linda Rundlett, Benefits Office, Ext. 5126.

# Then & Now — Lab Community, 1947 – 2007



(Above) In 1997, for the Lab's 50th Anniversary, 1,007 BNLeers gathered for this photo.

(Left) October 1947. Total BNL personnel: 1,161

(Top, left) In January 1947, the entire staff of the Physics Department consisted of Chair Norman Ramsey (center), Electronics Division Head J. Horner Kuper (right); the department secretary (second right) and two administrative assistants (left). By October, Ramsey had joined Harvard University to teach; Physics numbered 62, chaired by T.H. Johnson.

plus people this time? The video will be featured in Take5 and shown on BNL's website, and the photo will be published in the Bulletin and displayed on postcards and T-shirts. For more information, see also [www.bnl.gov/60th/events/photo.asp](http://www.bnl.gov/60th/events/photo.asp).

This year, on Wednesday, March 21, from the top of the Lab's water tower, a new, 60th Anniversary photo (see black box, right) and videotape of the human formation of the letters BNL and the number 60, will be made. The rain/snow date is Monday, March 26.

For this 60th Anniversary event, the organizers are hoping to beat the 50th Anniversary record of 1,007 people in the photo — why not have 2,000-

## In Memoriam

**Roy Skarka**, who joined the Plant Maintenance Division as a custodian on August 5, 1963, died at age 77 on November 22, 2005. He had retired from the Photography & Graphic Arts Division (P&GA) on March 27, 1992, as a senior P&GA specialist group leader.

**Marshall Bull**, who arrived at BNL on September 2, 1947, as a Photographic Division technician C and retired as Assistant Photographic Supervisor on August 15, 1980, died at 86 on March 13, 2006.

**Milton Steinberg**, who joined the Central Shops Division as a welder on September 12, 1966, and retired as a master welder on August 1, 1980, died at age 91 on April 14, 2006.

**George White**, who became a custodian in the Maintenance Division on January 3, 1949, and retired from the Biology Department as a senior research services assistant on January 31, 1984, died on April 19, 2006. He was 84.

**George Leuchner**, Life Number 462, who joined the Lab as an auto truck mechanic on March 24, 1947, and retired from the Staff Services Division on March 26, 1977, died on May 3, 2006, at the age of 88.

**Helen Browell**, who came to BNL on May 13, 1963, as a clerk B in the Physics Department and retired on September 30, 1977, as an office services assistant IV, died at age 91 on May 8, 2006.

**Walter Doyle**, who became a draftsman IV in the Alternating Gradient Synchrotron Department on January 8, 1979, and retired from the Accelerator Development Department as a principal drafter on January 31, 1992, died at 76 on May 9, 2006.

**Timothy Malloy**, who joined the Lab with Life Number 177 on March 4, 1947, and retired as a senior designer on April 9, 1971, died at age 98 on May 19, 2006.


**Edward Der Mateosian**, who joined the Physics Department as an associate physicist on May 27, 1949, and retired as a physicist on July 31, 1984, continuing as a consultant until September 30, 1988, died on May 20, 2006. He was 91.

**Kaye Sneed**, who joined the Plant Engineering Division as a custodian on 1976, died at age 63 on May 21, 2006. She had been promoted to an assistant storeskeeper in the Supply & Materiel Division, then retired on long-term disability on February 15, 1990.


**Olive Ritter**, who came to the Biology Department on October 7, 1960, as a laboratory assistant IV, died on May 28, 2006, at age 90. She had retired as a biology associate IV on February 6, 1981.

**Ruth V. Wright**, who joined BNL on November 25, 1957, as a junior technical specialist in the Biology Department, retiring as a biology associate II on December 22, 1983, died on September 23, 2006. She was 87.

### BNL's 60th Anniversary Review, 3/21



On Wednesday, March 21, recapture and feel the pulse of the past six decades of BNL history through music, dance, photos and personal memories of fellow BNLeers — all in "BNL's 60th Anniversary Review," which will be held at 4 p.m. in Berkner Hall. Cake and coffee will follow.



## Photo Op B-N-L 6-0

**3/21 at Noon**

On Wednesday, March 21, the day in 1947 on which BNL was founded, all BNLeers — employees, retirees, guests, contractors and on-site residents — are invited to take part at noon in a photo to celebrate the Lab's 60th anniversary.

Come to the field beside Police Headquarters, Bldg. 50, to form a living B-N-L 6-0.

## Inside Information

A symposium and banquet were held in honor of **Hugh Isaacs**, senior metallurgist in the Condensed Matter Physics & Materials Science Department, at the 2006 Joint International Meeting of The Electrochemical Society in Cancun, Mexico, October 29 – November 3. Isaacs was honored for his extensive contributions over the past 36 years to the field of localized corrosion. About 2,000 scientific papers were presented at the conference, and about 80 of these were in the Isaacs Symposium.

Isaacs presented his paper titled "*In Situ* Corrosion Studies: Tracing Interconnecting Threads," at the symposium given in his honor. In his laboratory and at the National Synchrotron Light Source, Isaacs developed pioneering electrochemical, chemical, and visual techniques to understand corrosion as it takes place. In one of the techniques that he developed in the early 1970s, the flow of currents in liquids was mapped over corroding metals. Recently, by subtracting and processing digital optical images, very small changes in the surface of a metal due to corrosion can be readily seen and analyzed.

**James Glimm**, head of Applied Mathematics in the Computational Science Center, was named President of the American Mathematical Society (AMS), effective February 1. He had served as President Elect in 2006, and his term of office as President is two years. With 35,000 members, the AMS is the premier organization in the U.S. for research mathematicians.

In his current position at BNL since 2001, Glimm also is Chair of the Department of Applied Mathematics and Statistics at Stony Brook University (SBU). He received a Ph.D. from Columbia University in 1959, and since then has worked in a number of fields concerned with pure and applied mathematics and mathematical physics. He is presently serving as Scientific Director of the New York Center for Computational Science, which is working to acquire a supercomputer jointly with BNL and SBU. Glimm is a member of the National Academy of Science and a 2002 recipient of the National Medal of Science.

## Fidelity Investment Counseling, 3/29

A Fidelity Investment representative will be at the Lab on Thursday, March 29, to hold sessions with individual employees interested in learning more about their retirement-savings and investment options. Schedule one of the 30-minute appointments by calling (800) 642-7131.

## Defensive Driving, 3/10

The next six-hour Defensive Driving (Point & Insurance Reduction) course will be held tomorrow, Saturday, March 10, in Room B, Berkner Hall, 9 a.m.-3:30 p.m. Organized by the ESH&Q Directorate, and delivered by EAS Associates, the course is open to BNL, BSA, and DOE employees, facility-users, and their families. The cost is \$30 per person. Preregistration is required. To register, call Edward Sierra, 821-1013, and leave a message with your phone number. For more information, call Sarah Wiley, Ext. 4207.



**BSA Noon Recital  
Tomoko Fujita,  
Bryant Park String Quartet**

The Bryant Park String Quartet will give the BSA Noon Recital on Wednesday, March 14, in Berkner Hall. Led by Tomoko Fujita, this new group of young professionals will perform works by Haydn, Ives and Steven Stucky. Fujita is a member of the faculty of the Stony Brook University Pre-College Program and of the Port Jefferson Music Academy. A previous, much appreciated BSA Noon Recital performer, cellist Tomoko is the daughter of Etsuko Fujita and step-daughter of Jim Muckerman, both of the Chemistry Department.



**Symposium to Celebrate Leipuner’s Physics**

All are invited to the “Larry Leipuner Symposium” to be held on Tuesday, March 27, in the Physics Department’s Large Seminar Room, Bldg. 510. The event will honor the late Leipuner, a senior physicist who retired in 2001 after 46 years in Physics and died in November 2006. At the symposium, talks will start at 1 p.m. with a welcome by Bill Morse, BNL; followed by “Reminiscences of Larry,” by Robert K. Adair, Sterling Professor of Physics Emeritus, Yale University; then remarks from Myron Campbell, Chair of the Physics Department, University of Michigan; Allen Sessoms, President of Delaware State University; and Peter Wanderer, BNL. After a half-hour break, Michael Schmidt of Yale will talk on “Larry Leipuner as a Mentor, and a Tale of Two Lifetimes.” Contact Bill Morse, Ext. 3859 or morse@bnl.gov, if you would like to join in a buffet dinner following the symposium.

**Nominate More BNL Volunteers by 3/15**

BNL, known for a long tradition of volunteerism, is participating in the Presidential Volunteer Service Award Program to honor and recognize employees, retirees, and community members who have volunteered 100 hours or more in a 12-month period. If you or someone you know qualifies for this award, you are encouraged to nominate them. Members of BNL’s Volunteers In Partnership committee within Community Relations of the Community, Education, Government & Public Affairs Directorate are coordinating the program for BNL. For more information, and to get the application form, contact Barbara Blenn, Ext. 4458, blenn@bnl.gov; or April Gray, Ext. 2459, gray@bnl.gov; or see www.bnl.gov/community/volunteers.asp. The awards will be presented at an upcoming Lab event. This is an extension of the first invitation to nominate volunteers for which the Lab was the first to provide its list of 27 nominees. Further applications must be submitted to Blenn, Bldg. 130, or Gray, Bldg. 134A, by March 15. The President’s Volunteer Service Award program is a way to thank and honor American volunteers who inspire others to engage in free service for others. DOE, the certifying organization, encourages all volunteers to apply for this recognition.

**BWIS & Diversity Office Present One-Woman Play:  
‘Good Lessons From Bad Women,’ 3/28**

In honor of Women’s History Month, Brookhaven Women in Science (BWIS) and the Diversity Office will present a one-woman play by Dorothy Leeds in Berkner Hall, titled “Good Lessons from Bad Women,” on Wednesday, March 28, at noon. Leeds combines an eight-year acting career with 22 years of experience as an executive, business owner, and sales and communications consultant. As an experienced media personality and film critic for MSNBC, Leeds appears frequently on broadcast and cable television, on such programs as NBC’s “Today,” ABC’s “Good Morning America,” and CNBC’s “Smart Money.” Leeds’ acting credits include Broadway’s hit show, “Stop the World, I Want to Get Off.” In her entertaining and provocative show, Leeds takes on the roles of eight so-called “bad” women — some familiar, like Eve, Eleanor Roosevelt, and Mae West, and others, not so well known, such as Emperor Wu, Elizabeth Freeman, Mrs. George Machine Gun Kelly, and Anne Bonney. These unconventional women often did what they felt they had to do, rather than what they were told to do. Lessons can be learned from their courageous acts. For more information, contact Kathleen Walker, Ext. 7105 or kwalker@bnl.gov.

**Weekly Ballroom Dance Lessons Start**

Two new six-week series of weekly lessons with the BNL Ballroom Dance Club and instructor Giny Rae will start on Wednesday, March 14, and end April 18. The first lesson is Beginners’ Samba, 6-7 p.m. The second is Intermediate West Coast Swing, 7-8 p.m. The fee for each six-week series is \$30/person. Prospective new members may attend the first two weeks free on trial. If they continue, they will be required to pay \$30/person. The lessons will be in the North Ballroom at the Brookhaven Center and are open to BERA members with one guest permitted per member. For more information contact Arup Ghosh, Ext. 3974; Donna Grabowski, Ext. 2720; or Vinita Ghosh, Ext. 6226.

**Employee Lunchtime Tour, 3/16  
Looking at BNL’s Emergency Operations Center**

On the next employee lunchtime tour, on Friday, March 16, participants will have an opportunity to visit a site not often open to view. The group will be looking at BNL’s state-of-the-art Emergency Operations Center, where John Searing, Site Emergency Manager, will show and explain the newest communications and emergency operations equipment. The group will meet in Berkner Hall lobby at noon and return by 1 p.m. No reservations are necessary.

**Dance Social —  
‘Swingin’ Into Spring, 60 Years Hence,’ 4/27**

In a return engagement after a full-house attendance last year, the 20-piece “Bill Wilkinson & the Long Island Sound Orchestra” will perform during a dance social celebrating BNL’s 60th anniversary, in the Brookhaven Center North Ballroom on Friday, April 27, 8-11 p.m. A one-hour beginner dance lesson in East Coast Swing will be given 7-8 p.m., and after the performance, an extra hour of ballroom, Latin, swing, and hustle dance music will be played by a Digital-DJ until midnight. The event is sponsored by the BERA Social & Cultural Club and is open to the public. All visitors of age 16 and over must bring a photo ID. Tickets cost \$25 each in advance, or \$35 at the door; buy them at the BERA store, Berkner Hall. Cost includes a cold hero buffet, cookies, refreshments, etc. Members of BNL’s Association for Students & Postdocs (ASAP) are offered a 50 percent discount. Contact Rudy Alforque, Ext. 4733 or rudy@bnl.gov, for more information.

**BERA Swim Lessons, 7/2-8/24**

Swim lessons will be available for children or grandchildren of all Lab employees, retirees, visitors and facility users. The child must be about 42 inches tall and thus able to stand flat-footed in the shallow end of the pool, with mouth above the water. Each child will be scheduled for a one-hour swimming lesson every week for eight weeks, from July 2 to August 4. American Red Cross certificates will be awarded to those children who qualify. Your application and check of \$80 made payable to BERA is due on or before June 1. Application forms are available at the Recreation Office, Bldg. 400, or at www.bnl.gov/bera/recreation/forms.asp .

**BERA Summer Camp Applications Open**

The program will run for eight weeks, from Monday, July 2 through Friday, August 24. Campers begin their day at the Recreation Hall, Bldg. 317, at 8 a.m. and must be picked up at the pool entrance no later than 5 p.m. The children must be between the ages of 5 and 14, and be the dependent child of a BNL employee, guest, or user. Your application and deposit of \$100 per week is due by April 13. Payment in full is due on or before June 1. Make checks payable to BERA and mail to the Recreation Office, Bldg. 400. During the camp, Red Cross Certified Swimming Instructors will offer swim lessons once a week. Swim lessons are included in the BERA Summer Program fee. Daily open swim/gym time will also be available. Application forms are available at the Recreation Office, Bldg. 400, or at www.bnl.gov/bera/recreation/forms.asp.

**One-on-One Retirement Counseling**

A TIAA-CREF consultant will visit BNL on Wednesday, March 14, and Tuesday, March 20, to answer employees’ questions about financial matters including: understanding the importance of protecting assets against inflation; finding the right allocation mix for you; learning about TIAA-CREF retirement income flexibility; comparing lifetime income vs. cash withdrawal options. For an appointment, call Arlene Lyons, (866) 842-2053, Ext. 4629.

**Daffodil Days**

BERA will again sell daffodils to benefit the American Cancer Society. The donation is \$10 for a bunch of ten fresh cut daffodils. Delivery will be made during the week of March 19. Your prepaid order can be made at the BERA Sales Office in Berkner Hall, weekdays, 9 a.m.– 3 p.m.

**Retirees: Save Lunch Date, 6/5**

On Tuesday, June 5, the Brookhaven Retired Employees Association (BREA) will hold the fourth annual BREA Luncheon. The lunch will be held at the Bellport Country Club. All retirees are warmly encouraged to save the date and watch for more information on registration, time, cost.

**CALENDAR**

**— THIS WEEKEND —**

**Friday, 3/9**

**\*Irish, Gaelic Bands in Concert**  
8 p.m. Berkner Hall. Irish band Black 47 and Celtic Roots band MacTalla Mor celebrate St. Patrick’s day, sponsored by the BNL Music Club. Tickets: \$20 today at the BERA Store or \$25 at the door. See notice, page 4.

**Saturday, 3/10**

**\*Defensive Driving Course**  
9 a.m.-3:30 p.m. Berkner Hall, Room B. \$30/person. For registration info, see notice, page 2.

**\*Holi Festival of Colors**  
1:30 p.m. Berkner Hall. The BERA Indo-American Association will present a Holi Function, a festival of traditional songs, dances, music. All welcome. Visitors to the Lab of 16 or over must carry a photo ID. For details on tickets (\$7/adults), etc., see page 4.

**— WEEK OF 3/12 —**

**Monday, 3/12**

**Talk on Medicaid Law Options**  
Noon. Berkner Hall, Room B. Nancy Law of Elder Law firm Burner, Chercher & Smith will talk on options for long-term care still open for you, your parents, under new Medicaid law. Register with M. Thorn, Bldg. 490/OMC or mthorn@bnl.gov.

**Wednesday, 3/14**

**\*BSA Noon Recital, Quartet**  
Noon. Berkner Hall. Cellist Tomoko Fujita brings the Bryant Park String Quartet to perform works by Haydn, Ives, Stucky. All are welcome to this free concert, sponsored by BSA. Visitors to the Lab of 16 or over must carry a photo ID.

**Friday, 3/16**

**\*Employee Lunchtime Tour**  
Noon. Berkner Hall lobby. Meet the group to be taken to BNL’s Emergency Operations Center to learn about communications and emergency operations equipment. See notice above, left.

**— WEEK OF 3/19 —**

**Wednesday, 3/21**

**\*BNL-60 All-Employee Photo**  
Noon. Field beside Police HQ. All Lab community, retirees too, wanted to form a living B-N-L 6-0, to be photoed and videoed from the tower. Join in! See notice, page 2.

**\*BNL 60th Anniversary Review**  
4 p.m. Berkner Hall. Six decades of BNL history reviewed through music, dance, photos, personal memories. All are welcome. Cake, coffee to follow.

**— WEEK OF 3/26 —**

**Wednesday, 3/28**

**\*\*Good Lessons From Bad Women**  
Noon. Berkner Hall. In honor of Women’s History Month, BWIS & the Diversity Office present a one-woman play, “Good Lessons From Bad Women.” See notice, page 3, left.

**423rd Brookhaven Lecture**  
4 p.m. Talk by Mei Bai of the Collider-Accelerator Department on “RHIC: the World’s First High-Energy, Polarized-Proton Collider.” All are welcome to this free lecture. Visitors to the Lab of 16 and over must carry a photo ID.

Note: This calendar is updated continuously and will appear in the Bulletin whenever space permits. Submissions must be received by the preceding Friday at noon to appear in the following week’s Bulletin. Enter information for each event in the order listed above (date, event name, description, and cost) and send it to bulletin@bnl.gov. Write “Bulletin Calendar” in the subject line.

**Arrivals & Departures**

— Arrivals —  
Randy Biegelman .....Dep. Dir. Ops.

— Departures —  
Artur Moraes..... Physics  
Qi Wang..... NSLS



## Classified Advertisements

### Placement Notices

The Lab's placement policy is to select the best-qualified candidate for an available position. Candidates are considered in the following order: (1) present benefits-eligible employees within the department/division and/or appropriate bargaining unit, with preference for those within the immediate work group; (2) present benefits-eligible employees within the Laboratory; and (3) outside applicants. In keeping with the Affirmative Action Plan, selections are made without regard to age, race, color, religion, national origin, sex, disability or veteran status. Each week, the Human Resources Division lists new placement notices, first, so employees may request consideration for themselves, and, second, for open recruitment. Because of the priority policy stated above, each listing does not necessarily represent an opportunity for all people. Except when operational needs require otherwise, positions will be open for one week after publication. For more information, contact the Employment Manager, Ext. 2882. Access current job openings on the World Wide Web at [www.bnl.gov/HHR/jobs/](http://www.bnl.gov/HHR/jobs/).

The Deputy Director has exempted the following positions from the freeze:

**LABORATORY RECRUITMENT** – Opportunities for Laboratory employees

**NS4430. MANAGER, PROJECT COORDINATION (M-1)** – Requires a bachelor's degree in engineering or architecture and 15 years experience in project management, building design and facility construction. Must have demonstrated project leadership experience in the development and execution of construction projects from conceptual through detailed design, construction and operation phases. Must have familiarity and experience with DOE Order 413.3A "Project Management" requirements; including application of cost/schedule control software; and BNL's/PE's contractual and internal performance measures. Must also have familiarity and experience in the procurement and management of Architect/Engineer services contracts and major construction contracts. PE/RA license and/or master's degree highly desirable. Familiarity with New York State Building Code and OSHA construction safety regulations a plus. Plant Engineering Division.

**TB4367. MATERIAL HANDLER (LG-3)** (term appointment, reposting) - Performs a variety of laboring and manual tasks in stores operations such as moving, loading, unloading, sorting and storing of materials. May operate motorized equipment pertinent to stores operations. Keeps stores facilities in neat condition. Procurement & Property Management Division.

**OPEN RECRUITMENT** – Opportunities for Lab employees and outside candidates.

**TM4282. DESIGN ENGINEER (T-5, reposting)** - Requires a BS degree in mechanical technology, mechanical drawing, or equivalent and 10 years experience in 3D modeling of complex mechanical components and systems. Requires substantial knowledge of engineering materials, machine shop practices and vendor products, as well as demonstrated skill in developing engineering concepts into detailed 3D models and drawings. Considerable experience in managing layouts, parts and assemblies in the drawing database is also required as well as substantial experience is required in specifying drive components such as motors, gears, bearings, actuators, switches and connectors. Good interpersonal skills and strong self-motivation are required. Work experience in the design of ultra-high vacuum systems and RF systems is desirable. Expertise in 3-D modeling with Autodesk's Inventor will be given preference. The NSLS-II Mechanical Design Engineer will have the following major responsibilities: generate 3D models and 2D drawings of accelerator and beamline components such as magnets, ultra-high vacuum chambers, RF mechanical components, x-ray absorbers, diagnostics devices; develop conceptual designs to meet physics and engineering specifications; create and maintain mechanical layouts and assemblies of major sub-systems; interpret and ensure conformance to applicable standards, codes and policies including ANSI Y14.5; conduct tolerance stack-up and interference analyses; document designs through detailed drawings including bill of material, ECN and catalogue items; and perform checking procedures as assigned by the immediate supervisor. May direct and coordinate the work efforts of other design personnel. Will report to the Design Room Supervisor. National Synchrotron Light Source-II.

**RM3509. TECHNOLOGY ENGINEER (I-6, reposting)** - Requires a bachelor's degree in engineering, computer science, or closely related field and at least 3 years of relevant experience. Hands on experience working with 1 and 10GbE networks, Fibre Channel technology, disk storage systems, PCI-X/PCI-e technology, and high performance x86 based server systems is required. Expert knowl-

edge of Linux based operating systems is essential, with additional knowledge of Solaris and AIX highly desirable. Demonstrated ability to integrate I/O hardware in production environments is necessary. Interest and understanding of the I/O components of operating systems and computer hardware is essential. Responsibilities will include assisting with the evaluation, configuration, integration, and deployment of high bandwidth computing systems, with a strong emphasis on the hardware components. The individual will be a member of a small team working on the hardware aspects of designing and deploying a scalable, high aggregate bandwidth data serving and storage system to support the computing requirements of the RHIC and US Atlas physics programs. Physics Department.

**TB3995. SR. GRAPHIC DESIGNER (reposting)** - Under minimum supervision and with considerable latitude for the exercise of initiative and judgment, plans, coordinates and produces graphic design, layout and artwork, for use in Laboratory technical publications, administrative documents, forms, presentation graphics, and the full range of printed public information products. Must possess considerable knowledge of the entire production process. Must have extensive knowledge of typography and its usage, and the use of computer-assisted design. The term "computer-assisted design" refers to the use of hardware and software for graphic design and excludes video editing, web page design and computer programming. Must be familiar with photographic, printing, binding, finishing, and mailing processes and operations. Provides technical and artistic guidance to the Laboratory personnel and contractor representatives, as required. Must possess excellent people skills, and be able to effectively interface with customers, production personnel and supervision in coordinating production and estimating the cost of jobs. Must be able to work within tight production schedules. Production Services Office/CEGPA.

### Motor Vehicles & Supplies

**06 BRP BOMBARDIER 800 EFI** - a/t. 4x4 camo. itp rims & tires, 2500 warn winch 3yr. warr. gar. Excel. 516-924-4303. \$6,500/neg. Ext. 3277.

**03 FORD EXPLORER** - grey, leathr., s/ roof, 6 disc cd, cruise & more, no damage or scratch, 3 yrs full warr. 29K mi. \$13,000. 891-9430.

**01 OLDSMOBILE ALERO** - silver, auto, excel. cond, cd player, 2dr, p/w, p/l. 100K mi. \$4,300/neg. Don, 744-7556.

**00 TOYOTA SOLARA SE** - orig. owner, excel. cond. 90K mi. \$7,900. 680-5645.

**98 DODGE GRAND CARAVAN** - 6-cyl., a/c, cd, c/c, p/l. Excel cond. Hwy miles. 170K mi. \$1,800/neg. Patrick, Ext. 4638.

**98 JEEP SPORT** - orig. owner, grt. cond., black ext. w/grey cloth seats, sun roof, a/c, elec. strtr. 75K mi. \$4,500. 265-1675.

**98 SUZUKI MOTORCYCLE** - G2250, cruiser style, saddlebags, great for beginner. 7323 mi. \$1,500. 645-5046.

**97 MERCURY TRACER** - 4cyl, 4dr, am/fm/cass, a/t, good cond., must sell. 199K mi. \$800/neg. Ludovic, Ext. 2411.

**96 CHEVY TAHOE SPORT** - blk., 2 dr., 4x4, 8 cyl., a/t, p/s, fm/am/cd, v. gd. cond. 145K mi. \$3,850. 734-5787.

**SNOW TIRES-(2)185/70R13** - mounted & balanced on Honda rims, approx. 500mi. of use. \$70. for pair. Ext. 4632.

**TIRES-(4) 175/70R13** - mounted & balanced on Honda rims, approx. 4,000 mi. of use. \$65 for pair/\$110 for four. Ext. 4632.

### Boats & Marine Supplies

**19' CELEBRITY DAY SAILOR** - All lines & rigging, 2 sets of sails, boom cover, trailer. \$1,995/neg. 909-1801.

**25' TANZER SAILBOAT** - Comp., DF, new VHF, new GPS, Rf & extra jib. \$9,000/neg. 909-1801.

### Furnishings & Appliances

**BASSINET** - wooden, for boy or girl, new in box. \$80 obo. 816-9472.

**BEDROOM SUITE** - Full bed w/mtrss & foundatn, dresser w/mirror, nightstd. mahog., old. \$600. Ext. 5744 or 929-4440.

**CHAIRS** - 2 bar/kitchen counter stools w/backs, white birch, cushion seats, 25" high. \$50 ea. 680-9018.

**COMPUTER DESK** - Odessa Pine, 48"x24"x28", \$40; Red Ironmaster self spotting weight syst., \$350., 645-5046.

**COMPUTER STATION** - oak, excel. cond. w/pull-out side drawer/shelf, storage cabinet top right. \$75. Mary, Ext. 6344.

**DEHUMIDIFIERS** - 2, \$75 ea. Joe, Ext. 3783.

**DINETTE SET** - 42"x42" + 18" leaf, Formica top w/lite oak finish, 4 chairs w/rollers, vg cond., photos avail. \$250. Brian, Ext. 2799 or 757-1581.

**FUTON** - Lays flat w/full-size mattress, excel. cond. Light colored wood, picture available. \$250. Ext. 5744 or 929-4440.

**HIGH CHAIR** - kids', made by Cosco, very good cond., white w/blue pattern. Ask \$30. Lisa, Ext. 7524.

**OAK TABLE** - 24" hexagonal solid oak w/ mirror top, \$40. Ext. 2897.

**PIANO** - Winter Upright. good cond. needs tuning. Must sell, reduced to \$600. Lynda or Michael, Ext. 2877 or 286-1018.

### Audio, Video & Computers

**LAPTOP COMPUTER** - HP nx6110 Celeron-M 1.4 GHz, 768MB RAM, 40GB HD, ComboDrive, int. wireless. \$500. 849-2520.

### Sports, Hobbies & Pets

**ENGLISH SADDLE** - size 17.5, excel. cond., 2nd owner. \$300. Mary, Ext. 6344.

**FOOSBALL TABLE** - lots of fun, excel. cond. \$40. Ext. 2159.

### Tools, House & Garden

**STICK WELDER** - Lincoln 225, excel. cond. \$100. Joe, Ext. 3783.

**TABLE SAW** - 10", 1 portable, excel. cond. \$85. Joe, Ext. 3783.

### Miscellaneous

**BREAST PUMP** - Medela, electronic double breast pump w/carrying case. Ask \$60. Letesha, Ext. 2523.

**CAMPING GEAR** - water container to hold extra water for campers, used 4 times. Ask \$60. Mary, Ext. 3670.

**EMPLOYMENT OPPORTUNITY** - BERA is hiring life guards and teacher counselors; lifeguards who are over 18 & camp counselors who are cert. teachers, LG cert. avail. Christine, Ext. 5090 or 828-2172.

**FLORAL WREATH** - xlg., blue & mauve hydrangeas, beautiful. \$40. Mary, Ext. 3670.

**MET TICKETS** - Tues. & Fri. games; 2 seats, Loge Sec 5, Row G; face value. Rod, 751-7023.

**NECK TIE** - Jerry Garcia, 100% silk tie, burgandy, blue, black & gold, new w/o tags, \$15. 803-0506.

**PLATES** - Stafford, Renaissance, blk/white, 4 bread, \$25; Czech Mepoco, 2 dinner, blk/multi flora, \$20/pr. 803-0506.

**TICKETS (2) FOR WILLIE NELSON** - *The Last of the Breed* concert at Radio City Music Hall-03/22/07 @ 8PM, Orch2 seating 208 & 209. \$180 pair. Ext. 4632.

### Wanted

**DESK W/HUTCH** - Looking for wooden desk with hutch for boys. Babu, Ext. 2568 or Ext. 1069.

**NATIVE FRENCH SPEAKING TUTOR** - for 16 y.o. girl. 828-5678.

**PROM GOWN** - senior HS prom gown/ dress wanted, will pay \$ for excel. cond., size 4-6, no red please. Mary, Ext. 3927.

**REMINGTON 870 IN 20 GA OR 410** - Will pay fair price. Joe, Ext. 3783.

**WANTED** - 3-4 bedroom house to rent as of 5/15/07, within 30 min. of Lab, a/c, w/d, refrig, garage/storage, shed. Maryann, 880-2425.

### For Rent

**CENTER MORICHES** - 4 bdrm wtr-frt. house, dock on creek, 2 bath, eik, d/r, w/d, f/p \$1,955/mo. 261-7908.

**CENTEREACH** - 2 bdrm. apt., close to all, transport/business, off str. pkg., pvt. ent., full kit., lg. windows, use of yard. no smkg./pets. incl. all. \$1,275/mo. 546-8600.

**E PATCHOGUE** - 1-bdrm. apt., pvt. ent., l/r, kit, bath, walk to water, heat/water incl., 1 mo. sec. \$950/mo. 484-2990.

**E. SETAUKET** - 1 bdrm. apt., pvt. ent., spacious parking, all util. incl., 1 mon. sec. \$850/mo. 456-1753.

**FARMINGVILLE** - 1 bdrm, 15 min. to Lab, lvg/kit combo, lge bdrm, incl. heat cntrl, cac, cable, l/net, one mo. sec., no smkg/pets, \$825/mo. Tom, Ext. 4866 or 974-0770.

**N. SHIRLEY** - 1-bdrm apt., ground level, fully furn., pvt. ent., 4 min. to Lab, single, no smkg./pets. \$800/mo. 281-3479.

**NESCONSET** - 1 furn. rm. in 2-bdrm. apt., share bath, kit & l/r, short term, avail. until 4/22, Internet & elec. incl. \$160/wk. Mark, Ext. 2247.

**SHIRLEY** - 1-person rm., full bath, sep. ent., furn., tv, wireless, heat, all incl., 15 min. to Lab, 5 min. to stores/beach. 1 mo. sec., no pets/smkg. \$650/mo. Regis, Ext. 8321.

**SHOREHAM** - 4-bdrm, 2 bath cape, d/w, micro, w/d incl., full bsmt., 1 car gar., prvt. lg. backyd., SWRS, \$2,500/mo. 821-2577.

**WADING RIVER** - Clean, bright, spacious 1 bedroom apartment. Walk to beach and park. No smoking, no pets. Rent includes all utilities \$1,000/mo. 988-7008.

### For Sale

**SHOREHAM** - 4-bdrm. Colonial, 2-1/2 bath, l/r, formal d/r, fin. bsmt., igs, 2-car gar. \$589,000/neg. Don, 821-3320.

**SHOREHAM** - Sprawling 5-bdrm 2-bath ranch; move in cond, brd-new appl, dr/way, cac, heat syst. & hw/h, fp, lns, fenced yd, 18x18 shed, \$369,900/neg. 848-8072.

**HALCOTTSVILLE, NY** - Log home, 1,750 sq ft, 3 bdrm, 2 bath, entry. Prpane heat/wd stove, cath. ceilg, 1,000 sq ft deck, stone walls on prop. 15 min to ski resorts. 878-4159.

**KISSIMMEE, FL** - deeded time sh. at any Westgate resorts. 21st wk, 2 bdrm., slps 8, mstr bdrm., Wh/pool w/d, full kit., pool, extras. \$11,500/neg. Ext. 5263 or 375-7959.

## Irish Concert Tonight! 3/9 Black 47 and MacTalla Mor Bands

The Irish band Black 47 and Celtic Roots band MacTalla Mór will perform in Berkner Hall tonight, Friday, March 9, at 8 p.m. in a special concert to celebrate St. Patrick's Day. Sponsored by the BNL Music Club, the concert will be open to the public. All visitors to the Lab age 16 and over must bring a photo ID.

Led by Irish author, playwright and songwriter Larry Kirwan, Black 47 is known for its Irish form of rock n' roll, which includes songs about such topics as the Northern Ireland conflict and urban unrest in New York. The band plays in such well-known Manhattan venues as the B.B. King Blues Club, and it has nine albums to its credit.

MacTalla Mór, Gaelic for Great Echo, is a national touring band

featuring bagpipes, piano, percussion and vocals in a dynamic mix of traditional Celtic music, Roots rock, calypso, blues and jazz. The band's mix of traditional Irish and Scottish tunes, original songs, arrangements and driving rhythms creates an engaging blend of old and new. In addition to playing at music festivals and universities, the band has played at famous locales, such as Caesar's Palace in Las Vegas. MacTalla has also been featured on TV, including appearances on ABC, NBC, and HBO.

Tickets cost \$20 each in advance at the BERA Store or \$25 each at the door on the evening of the show. Tickets may be ordered electronically at [www.ticketweb.com](http://www.ticketweb.com).

## Enjoy the Holi Festival of Colors Tomorrow, 3/10 A BERA Indo-American Association Event

Tomorrow, Saturday, March 10, the BERA Indo-American Association (IAA) invites all to a Holi Function, a festival of traditional songs, dances, and music from the Indian subcontinent, to be held at Berkner Hall. The program will start at 1:30 p.m. and include an intermission and snack. More information on the event is available at [www.bnl.gov/bera/activities/iaa/holi2007/](http://www.bnl.gov/bera/activities/iaa/holi2007/).

Make all reservations, including modifications and cancellations, on the web at [www3.bnl.gov/bera-iaa/holi/reserve\\_form.php](http://www3.bnl.gov/bera-iaa/holi/reserve_form.php). Tickets are: \$7/adults; children 3-12/\$4. Infants may attend free, but include the infant's name in your reservation. Reserved tickets are not confirmed until paid. All are welcome to the event, and visitors to the Lab of age 16 and over must carry a photo ID.

## Lunar Eclipse, 3/3/07

The total lunar eclipse that took place early on the evening of March 3 was the first since 2004. For stargazers in North America, the Moon rose well into the partial phases of its eclipse. During a break in the clouds about 30 minutes after

moonrise, BNLER Phil Harrington caught the moment when a star was emerging from behind the Moon. Harrington took this photo from his home in Miller Place through one of his telescopes — the equivalent of a 1,600-millimeter lens, he says. The next lunar eclipse comes up in August, and another may be seen in February 2008.

### On-Site Services

**CAFETERIA** - Menu, Thurs. March 15, Ce- leb. St. Pat's day: Irish soda bread Fr. toast brkfst; Soups: lamb/mushroom barley, cream of potato; Shepherds Pie; Corned Beef w/2 sides; grilled lamb sausage w/ stewed onions, roll; rice pud. w/whiskey-raisons. SPECIAL RAFFLE: win 2 NY Islander vs. NJ Devils tkts, 3/27, Nassau Col.

**ENTERPRISE RENT-A-CAR** - Stop by the on-site office at Bldg. 355, 50 Brookhaven Ave., to check weekend specials, daily rates. Or call Ext. 4888 or see [www.enterprise.com](http://www.enterprise.com).

**ON-SITE SERVICE STATION** - All vehicle services, NYS inspections, new batteries, tires, tuning belts, repairs, etc., done while you are at work. Ext. 4034.



Geoff Blythe of Black 47



MacTalla Mór, Gaelic for Great Echo



### In Appreciation

To all my friends at the NSLS: Thank you for your kind words, prayers and generosity during a difficult time for me and my family.

— Chris Stelmach

A heartfelt thank you to all of my BNL friends for your prayers, cards, and words of comfort after the loss of my father. Your kindness is deeply appreciated.

— Ed Sperry & Family

See classified ads on BNL's intranet at <http://intranet.bnl.gov/ads/displayAdsAll.asp>. These include a list of ads for services offered. These ads cannot be seen from off the Lab site. For a list of services to be e-mailed to you, send a request to [bulletin@bnl.gov](mailto:bulletin@bnl.gov) or phone Ext. 2346.