

Peter Ferrara Named BNL's Fiscal Officer

Peter Ferrara has been named Fiscal Officer for BNL, effective October 1. The Laboratory is managed by Brookhaven Science Associates under contract with DOE and has approximately

2,600 employees and an annual budget of about \$500 million.

In his new position, Ferrara has primary responsibility for the Fiscal Services Division, which has about 30 employees. The division's functions include accounts payable, accounts receivable, conference management, general accounting, payroll and travel services. Ferrara is also responsible for assuring the accuracy and integrity of the Laboratory's financial statements and for compliance with DOE requirements as well as generally accepted accounting principles.

"I am honored to have been chosen for this position," Ferrara said. "I will be working on maintaining the high standards of the Fiscal Services Division and, when possible, improving the Lab's fiscal practices in support of our scientific mission. One of my challenges will be to maintain and recruit excellent staff for the Fiscal Services Division as the Laboratory adds new facilities in the future."

A Certified Public Accountant, Ferrara earned a B.S. in accounting from Binghamton University in 1983. From 1983 to 2000, he held various positions of increasing responsibility in public accounting and in private and public organizations both on Long Island and in Fort Lauderdale, Florida. He joined the Lab as general accounting manager in 2000, and, since January 2007, had also served as the Laboratory's Interim Fiscal Officer. Ferrara is a member of the American Institute of Certified Public Accountants.

— Diane Greenberg



Roger Stoutenburgh D0561007

Breaking the Barrier Toward Nanometer X-Ray Resolution

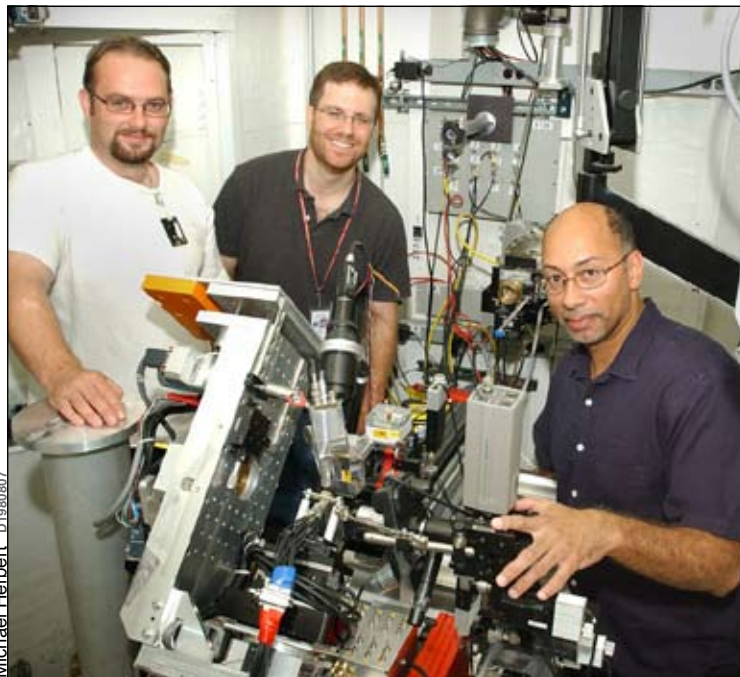
A team of researchers at BNL has overcome a major obstacle for using refractive lenses to focus x-rays. The method they developed will allow the efficient focusing of x-rays down to extremely small spots and is an important breakthrough in the development of a new, world-leading light source facility that promises advances in nanoscience, energy, biology, and materials research.

At BNL's National Synchrotron Light Source (NSLS), the scientists exceeded a limit on the ability to focus "hard," or high-energy, x-rays known as the "critical angle." Their results are described online in the September 28, 2007, edition of *Physical Review Letters*. The research was supported by the Office of Basic Energy Sciences within DOE's Office of Science.

"One measure of the quality of an x-ray optic is how small a focused spot it can make," said NSLS researcher Ken Evans-Lutterodt. "The problem is that nature does not allow a single lens to deflect the x-rays very much. This limits how small of a spot you can create, and this translates to some fuzziness in the image. To get a sharper image, you need a lens that's more able to deflect the x-rays."

In 2003, a trio of BNL researchers — Evans-Lutterodt, Aaron Stein, and James Ablett — were the first to notice the critical angle limit while investigating the properties of a so-called kinoform lens for focusing hard x-rays. This efficient type of refractive lens is similar to those found in lighthouses. The team proposed a solution to the critical angle problem of a compound kinoform lens, and both the problem and proposed solution were also suggested later by other researchers in the field.

In the current publication, the researchers implemented their



Michael Herbert D1930307

The research team at NSLS beamline X13B, from left: James Ablett, Aaron Stein, and Kenneth Evans-Lutterodt. Natasha Bozovic, from San Jose State University, also collaborated on this research.

idea by creating a compound lens from a series of four kinoform lenses placed one after the other. Using this setup at NSLS beamline X13B, they showed that the critical angle can be surpassed with hard x-rays, while still focusing like a single lens.

"Thanks to the excellent fabrication resources at BNL's Center for Functional Nanomaterials and at Alcatel-Lucent, we are able to fabricate the lenses to the precision required," Stein said.

This is an important step for the National Synchrotron Light Source II (NSLS-II), a state-of-the-art synchrotron facility that will produce x-rays up to 10,000 times brighter than those generated by the current NSLS and could lead to advances such as alternative-energy technologies and new drugs for fighting disease. One of the major goals of the facility is to probe materials and molecules with just one-nanometer resolution — a capability needed to study the

intricate mechanisms of chemical and biological systems.

"Without exceeding the critical angle, the refractive lens resolution would be limited to 24 nanometers or more," Ablett said. "Even though in this experiment we just barely exceeded this limit, we've shown that it can be done. This is just the first step."

Next, the researchers will measure the resolution their new lens system produces, and will continue to fabricate and test optics that push further beyond the critical angle, and closer to the one-nanometer benchmark.

"We've broken the barrier, now there's more work to be done to get down to those small x-ray spots," Evans-Lutterodt said. "We hope this will be one route that NSLS-II and others will use." — Kendra Snyder For more information, see www.bnl.gov/bnlweb/pubaf/pr/PR_display.asp?prID=07-99, and go to the Brookhaven Lecture on 10/24, see story at right.

Symposium Today Celebrates BNL's 60 Years of Discovery

Full-day event, 10/19, features talks on accelerators, nanoscience, addiction, climate, energy, and more

As part of its 60th anniversary celebration, on Friday, October 19, in Berkner Hall, BNL is hosting a full-day symposium for employees, guests, and others interested in hearing renowned scientists speak about past and current developments in fields in which the Lab has been and continues to be a pioneer. Talks on topics

including nuclear and particle physics to neuroimaging, nanoscience, climate change, and energy will be held 9 a.m.-5 p.m., followed by a celebratory reception, 5-6 p.m. For more information on the agenda, see www.bnl.gov/60th/docs/60th_ann_symposium_agenda.pdf. The event is also available on streaming video at www.bnl.gov/video.

428th Brookhaven Lecture, 10/24

'Lighthouses, Light Sources, Kinoform Hard X-ray Optics' A Talk by Evans-Lutterodt

BNL's planned National Synchrotron Light Source II (NSLS-II) is designed to be a world-leading light source facility, promising advances in nanoscience, energy, biology, and materials research. In designing and developing this new facility, breakthrough research is a must to ensure that appropriate tools are available for the new science that will be studied.

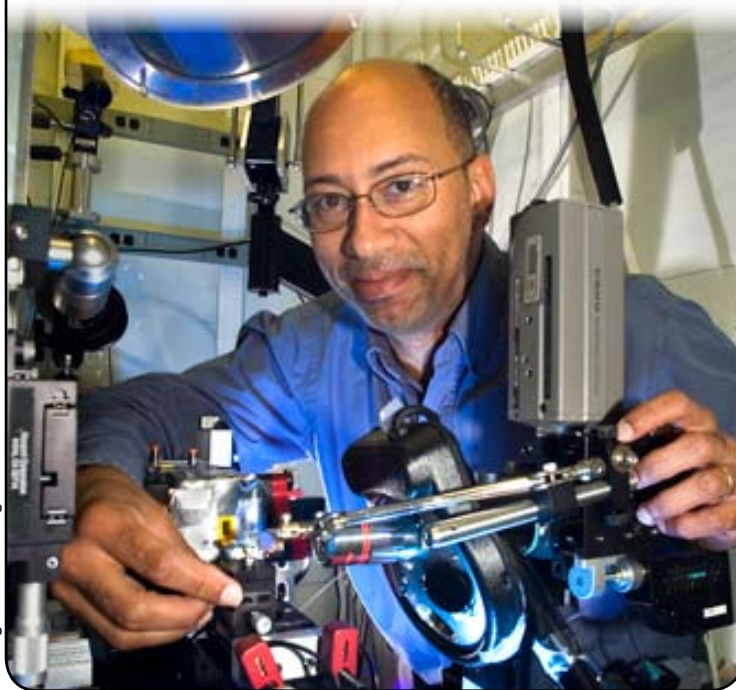
At BNL, a team of researchers has overcome a major x-ray focusing obstacle to allow the study of molecules, atoms, and advanced materials at the nanoscale — on the order of billionths of a meter. Their innovative method uses a type of refractive lens called a kinoform lens — similar to the kind found in lighthouses — in order to focus the x-rays down to the extremely small spots needed for a sharp image at small dimensions.

To learn about this research, join NSLS physicist Kenneth Evans-Lutterodt in Berkner Hall, at 4 p.m. on October 24, as he gives the 428th Brookhaven Lecture, titled "Lighthouses, Light Sources, and Kinoform Hard X-ray Optics."

The goal for Evans-Lutterodt and his colleagues is to enable the probing of materials and molecules with just one-nanometer resolution — a capability needed to study the intricate mechanisms of chemical and biological systems. However, to do that, they need to exceed a limit on the ability to focus "hard," or high-energy, x-rays known as the "critical angle." Evans-Lutterodt will explain how this limit was exceeded at the NSLS and how the breakthrough could benefit future science at NSLS-II.

Evans-Lutterodt received his Ph.D. in physics from the Massachusetts Institute of Technology. After working at Bell Laboratories, he joined BNL in 2003.

Refreshments will be offered before and after this free talk, which is open to the public. Visitors to the Lab who are 16 and older must carry a photo ID. To join Evans-Lutterodt at an off-site restaurant for lunch the next day, contact Angela Bowden at Ext 5169 or bowden@bnl.gov. — Kendra Snyder Note: See also related story at left.



Roger Stoutenburgh D0541007

CALENDAR
OF LABORATORY EVENTS

- The BERA Store in Berkner Hall is open weekdays from 9 a.m. to 3 p.m. For more information on BERA events, contact Andrea Dehler, Ext. 3347, or Christine Carter, Ext. 2873.
- Additional information for Hospitality Committee events may be found at the Lollipop House and the laundry in the apartment area.
- The Recreation Building #317 (Rec. Hall) is located in the apartment area.
- Contact names are provided for most events for more information.
- Events flagged with an asterisk (*) have an accompanying story in this week's Bulletin.

— EACH WEEK —

Weekdays: Free English for Speakers Of Other Languages Classes

Beginner, Intermediate, Advanced classes. Various times. All are welcome. Learn English, make friends. See www.bnl.gov/esol/schedule.html for schedule. Jen Lynch, Ext. 4894

Mondays: BNL Social & Cultural Club
Noon-1 p.m., Brookhaven Center, South Room, free beginners dance lessons. Rudy Alforque, Ext. 4733, alforque@bnl.gov

Mondays: Pilates
Noon-1 p.m. Rec. Hall. Ext. 5090

Mondays & Wednesdays: Pilates
5:15-6:15 p.m. Rec. Hall. Ext. 5090

Mondays: Jiu Jitsu Club
6:30-7:30 p.m. B'haven Center. All levels, ages 6 & up. \$10/class. Tom, Ext. 4556

Mondays & Thursdays: Kickboxing
\$5 per class. Noon-1 p.m. in the gym. Registration is required. Ext. 8481

Mon., Thurs., & Fri.: Tai Chi
Noon-1 p.m., B'haven Center North Rm. Adam Rusek, Ext. 5830, rusek@bnl.gov

Tue., Thurs. & Fri.: Ving Tsun Kung Fu
Noon-1 p.m., B'haven Center, North Room. Taught by Master William Moy. Scott Bradley, Ext. 5745, bradley@bnl.gov

Tues. & Thurs.: Jazzercise
Noon, Rec. Hall. Ext. 5090.

Tuesdays: Hospitality Coffee
10:30 a.m.-noon, Rec. Hall lounge. All welcome. Ext. 5090

Tuesdays: BNL Music Club
Noon, B'haven Center, N. Room. Come hear live music. Joe Vignola, Ext. 3846

Tuesday & Thursday: Aerobic Fitness
5:15 p.m., Rec. Hall. 10 classes for \$40 or \$5 per class. Pat Flood, Ext. 7866, flood@bnl.gov

Tuesday & Thursday: Aqua Aerobics
5:30-6:30 p.m., Pool. Ext. 5090

Tuesdays: Knitting, Crochet Club
2-4 p.m. Rec. Hall. Lessons of basics, yarns, needles available. Su Yen Chae, Ext. 1051, suyenchae@yahoo.com.

Tuesdays: Toastmasters
1st and 3rd Tuesday of each month, 5:30 p.m., Bldg. 463, Room 160. Guests, visitors always welcome. www.bnl.gov/bera/activities/toastmasters/

Tue., Wed. & Thu: Rec Hall Activities
5:30-9:30 p.m. General activities, TV, ping pong, chess, games, socializing. Christine Carter, Ext. 5090.

Wednesdays: On-Site Play Group
10 a.m.-noon. Rec. Hall. Infant/toddler drop-in event. Parents meet while children play. Petra Adams, 821-9238.

Wednesdays: Ballroom Dance Class
B'haven Center, N. Ballroom. Instructor: Giny Rae. Starts September 12 and 19. Ext. 3845.

Wednesdays: Weight Watchers
Noon-1 p.m. Michael Thorn, Ext. 8612

Wednesdays: Yoga
Noon-1 p.m., B'haven Center. Free. Ila Campbell, Ext. 2206, ila@bnl.gov

Thursdays: Reiki Healing Class
Noon-1 p.m., Bldg. 211 Conference Rm. Nicole Bernholz, Ext. 2027

Fridays: Family Swim Night
5-8 p.m. BNL Pool. \$5 per family

Fridays: BNL Social & Cultural Club
Noon-1 p.m., B'haven Center, South Room, free beginners dance lessons. 7-11:30 p.m. North Ballroom, Dance Social, workshops. Rudy Alforque, Ext. 4733, alforque@bnl.gov

CIGNA Representative

A CIGNA Healthcare representative is available as needed in Human Resources, Bldg. 400, or by phone to assist with claims issues you have been unable to resolve yourself through CIGNA's Customer Service number (1-800-CIGNA24). Mary Beth Kivlen will be available by appointment only. You will need to provide all pertinent documentation. To schedule, call the Benefits Office, Ext. 5126.

Then & Now — Some Long-Term Employees, Part II

Last week, in the Bulletin of October 12, 2007, Part I of the article "Then & Now — Some Long Term Employees," quoted some 1987 Brookhaven Bulletin (BB) interviews of several employees who had been at BNL since the birth of the Lab in 1947. Part II continues to highlight the opinions of a few more of these 40-year-anniversary Lab VIPs and will then focus on a BNLER with an even longer term of service.

Karl Walther, glassblower, joined the Lab in February 1947 with life number 160. He commented on the excellent quality of the equipment at BNL. "The Lab was something of a showpiece, and we were lucky in procuring first-class working materials, which were hard to get as a rule," he said. Forty years later, with many buildings changed and Lab workers come and gone, "One thing is the same," said Walther. "When you're supporting a top scientist with a first-class mind who throws his whole heart in his project, you are just dragged along into the excitement of the work. You don't work for the salary. You are part of a team of discovery. That's working at the Lab at its best, and for me, there's no place like it." (BB, Jan. 9, 1987)

Long-Term Women

Two long-term women employees interviewed in 1987 were Marilyn McKeown, a computer analyst in the Physics Department, and Frances Scesny, a personnel representative in the Personnel Division. Although both were hired in 1947, neither was celebrating 40 years of service. McKeown joined BNL in a scientific position after completing her bachelor's degree in physics in May, 1947. She took voluntary leave to complete her masters in physics, but also had to leave her job in March 1954 to raise her family. At that time, she said, Lab policy did not allow women to work beyond the sixth month of a pregnancy. Some women stayed on for longer, however. "We conveniently forgot our exact due dates," admitted McKeown. She returned part-time in 1955 and started taking computer science classes at Stony Brook University for her second master's, which she completed in 1977, two years after becoming a full-time employee. She continued working in the solid state physics group in the Physics Department until 1993.

Scesny, who had been hired with life number 63, left before the end of 1947 because she was expecting a baby. "Women didn't work through their pregnancies. That was the way it was, and no one questioned it at the time," she said. Scesny returned to work 13 years later in 1960, when her children were all in school. At that time, women still had to leave work three months before giving birth, receiving six months of unpaid leave. "Now it's different," Scesny said in 1987, commenting on the changed policy



that allowed women to take sick time for childbirth, and also that the majority of mothers returned to work, while their children were in day care. "It is nice that a woman can now have a baby and a job," she said. (BB, Oct. 9, 1987)

Half a Century

Scesny's point is borne out by the Lab's monthly lists of Service Anniversaries. In the late 1980s and early 1990s, women who had served for 30 years or more were rare. By the mid-90s and beyond, many more women were celebrating their 30th, 35th or even longer anniversaries as BNL employees. One exceptional case was Elinor Norton, who retired from the Chemistry Department in 2001 after 50 years at the Lab. Other half-century and half-century-plus BNLEs include Irving Feigenbaum, Bernard Manowitz, Seymour Rankowitz, and others. This December, Leonard Newman, who in 2001 delighted everyone at the annual Service Anniversary party hosted by the Lab by opening his jacket to reveal every service anniversary badge that he had been given over the years, will be another BNLER eligible for the 50th year badge.

50-Year VIP Dioguardo

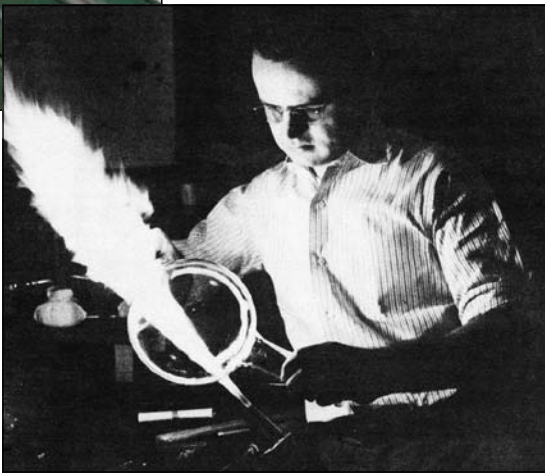
The current "star" VIP for 50-years-at-the-Lab is George Dioguardo of the Property Management Group within the Procurement & Property Management Division. Dioguardo started with a temporary job at BNL in July 1957, working in the Biology Department greenhouses. After about a year, a rather permanent position opened in Supply & Materiel (S&M). He applied and was accepted as a materials handler.

"One of my earliest assignments was in Bldg. 206, the metals warehouse," recalled Dioguardo. "We stored the metal and cut it on demand, cutting it a bit bigger than the actual size so that the Central Shops machinists or whoever wanted it could fabricate exactly what they needed and remove the excess. S&M had seven or so warehouses with over 12,000 items in stock. I worked in each of the warehouses, then after about 28 years, I was made a supervisor."

Above, left: George Dioguardo, 2007

Above, right: Leonard Newman, 2001

Right: Karl Walther, 1948



Like many Lab employees, Dioguardo had other members of his family who worked here. "My mother worked in the clinical chemistry lab in Medical for about 28 years. My uncle was in the Cosmotron and the AGS for about 30 years. And my sister, who is a nurse, also worked here for a year or so. The Lab's been good to us, providing steady employment and benefits," he said. These days, the Lab provides stock items differently, Dioguardo explained. The trend is to obtain items as needed on a just-in-time basis, rather than store them in warehouses on site, so most warehouses are a thing of the past.

"It was hard to see the row of warehouses torn down. They held many memories," Dioguardo observed. "I think it's sad in a way that everything has to change to fit new situations. One stockroom and one warehouse in Bldg. 100 are all we have now, with some satellite stockrooms located where they are needed, for example, at Bldg. 725 for the Light Source, and Bldg. 918 for the AGS."

All the existing warehouses will need to be demolished to make way for the proposed Light Source II, but Dioguardo is pleased that new buildings and equipment are expected to be funded to relocate Property Management Division operations. Dioguardo is proud of his staff. "They do a good job and go the extra mile," he said.

"Most days, I enjoy coming to work," Dioguardo concluded. "Our job is to service the Lab community so they can do their work. One of the nicest parts of the job is meeting so many people from all over BNL. There's such a variety, from different countries and different states, and they have all sorts of needs. It's always satisfying to help them."

Mountains Left to Climb

As reading the Lab newspapers can show, many BNLEs, whether long-termers or recent arrivals, experience deep satisfaction in being a part of the Lab's endeavors. In his interview with the Bulletin in 1987, Bernard Manowitz gave one reason which still holds good for many:

"There are always mountains left to climb," Manowitz said. "After all this time, I still see brand-new ideas here and frontiers to pioneer. People still work weekends and late into the night because they are interested, not because it's their job. It's still an adventure." (BB, Oct. 16, 1987) — Liz Seubert

Service Anniversaries

The following employees celebrated a service anniversary during July 2007:

— 50 Years —	
George Dioguardo	P&PM
— 40 Years —	
Robert McGonigle	ITD
George Murdock	C-AD
— 35 Years —	
John Dunn	Biology
Merle Pringle	Plant Eng.
Robert Bari	ES&T
— 30 Years —	
Betsy Sutherland	Biology
Jon Sandberg	C-AD
Robert Kiss	NSLS
Arlene Rementer	CMP&MS
— 25 Years —	
Daniel Sullivan	Magnet
Biays Bowerman	N&NS
— 20 Years —	
Noreen Michelsen	Budget
Amalia Ruggiero	Life Scis.
Michael Schwarz	NSLS
Timothy Devine	Em. Services
Steven Warhol	Physics
Carl Schultheiss	C-AD
— 10 Years —	
Vadim Ptitsyn	C-AD
Torre Wenaus	Physics

Arrivals & Departures

— Arrivals —	
Alfonso Salgado, Jr.	Plant Eng.
Viktori Stisova	Biology
Hanfei Yan	NSLS II
— Departures —	
Joseph Cracco	Rad. Ctrl.
Roberto Duca	CFN
Iuliu Stumer	Physics

GLOBE Meeting, 10/24

GLOBE, the BERA Gay, Lesbian or Bisexual Employees' Club, is meeting on Wednesday, October 24, at 5:15 p.m. Call Debbie, Ext. 5664, for the location.

Sign Up for BERA Trips, Events

You can enjoy a Broadway matinee show, such as *Legally Blond*, (11/3, \$76); or shop at Reading Outlets in PA (11/10, \$10); or see the NY Islanders, (11/24, \$56) — all with BERA. Prices include transportation; pay at the BERA Store, Berkner Hall. More information is at the Store and www.bnl.gov/bera/recreation/events.asp.

Employee Lunchtime Tour — PHENIX, 10/26

Take the employee lunchtime tour on Friday, October 26, to learn about PHENIX, the Lab’s largest detector. This huge detector will soon be rolling into its experimental position for the eighth run of the Relativistic Heavy Ion Collider (RHIC). Meet the group

at noon in Berkner Hall lobby to be taken on the tour, where you will visit the counting house and control room to see the computers and the large experimental hall. No reservations are needed. The group will be returned to Berkner by 1 p.m. Call Ext. 2400 for more information.

(At left) The PHENIX detector in 1998.

Coming Up: Interesting Talks at BNL

All are welcome to these free lectures, open to the public. Visitors to the Lab of 16 and over must carry a photo ID.

Tuesday, 10/30: Family-Friendly Policies

4 p.m. Hamilton Seminar Room, Bldg. 555. Mary Ann Mason, Professor of Social Welfare and Law, University of California, Berkeley, will talk on “Do Babies Matter? The Effect of Family Formation on Men and Women in Science.”

Wednesday, 10/31: 429th Brookhaven Lecture

4 p.m. Berkner Hall. BNL Historian Robert Crease of Stony Brook University will talk on “How Big Science Came to Long Island: The Birth of Brookhaven Lab.”

October is BNL’s Healthfest Month

Healthfest, BNL’s annual month of health, fitness and safety celebrations, still has great events ahead. All the Lab community is encouraged to take part in fitness events, safety demonstrations, raffles, and the ever-popular health, safety and fitness fair. Healthfest is sponsored by Brookhaven Science Associates, and co-chaired by Denise Dimeglio and Michael Thorn through the Human Resources & Occupational Medicine Division. Register for bike, run, and swim events at <http://intranet.bnl.gov/healthfest/> or call Thorn, Ext. 8612. Future events include:

- Friday, 10/19, noon-1 p.m. 5-kilometer Fitness Run (rain or shine), Biology, Bldg. 463. Run counts as first half of the biathlon
- Monday, 10/22, Noon-1 p.m. Fitness Open House. Tour gym and pool in Bldg. 478
- Tuesday, 10/23, 11 a.m.-2 p.m. Health, Fitness & Safety Fair in Berkner Hall. Displays, info, screenings for cholesterol, glucose, height, weight and blood pressure; drinking-water taste test, home-water sample testing; personal protective equipment; ISM “Wheel of Fortune” game
- Wednesday, 10/24, 11 a.m.-1:30 p.m.400-Yard Swim, Bldg. 478 Pool, for all 18 and older
- Friday, 10/26, 11 a.m.-1 p.m. 800-yd swim, (timed) for those 18 and older. Swim counts as second half of the biathlon.

At the Healthfest Fair, 10/23
Taste Brands of Water; Test Your Water

At the 2007 Healthfest health, fitness & safety fair on Tuesday, October 23, in Berkner Hall, BNLeers are again invited to participate in a drinking-water taste test — which sets BNL drinking water in competition against three other “brands” of drinking water.

At the BNL water-quality booth, you are also invited to have your home tap water tested for four parameters.

To participate in the taste test, bring a thirst for drinking water and have an opinion about which water is best and why.

To have water from your home tap tested, bring a sample in a clean glass container about the size of a Mason jar.

New Discount on Personal Protective Equipment

A new employee discount has been arranged to promote the health and safety of all, at home and at work. All Lab employees will be able to purchase personal protective equipment through a web-site sponsored by Olympic Glove & Safety Co., a supplier of similar equipment to BNL. Items such as ear protection, safety glasses, gardening gloves, and first-aid kits will be available at 30 to 40 percent discounts. The vendor will display samples at the Healthfest Fair on Tuesday, October 23, and you might place an order there. The vendor’s website will be linked to the ESS&H tab at the top of the BNL home page, to the BERA Employees Discount page, and the Safety & Health Services Division home page. After the Fair, sample equipment will be on display in Berkner and Bldg. 400, and information cards will be available at many locations on site.

Brookhaven Retired Employees Association Talk, 11/15
Update on Suffolk’s Senior Citizen Task Force

On Thursday, November 15, at 12:10 p.m. in the Hamilton Seminar Room, Suffolk County Legislator Steven Stern, Chair of the Veterans and Senior Committee, will give a talk on the “Suffolk County-Wide Senior Citizen Task Force.” Stern established the Task Force especially to address issues important to seniors — such as affordable housing, accessible transportation, and the increased need for long-term care. Public hearings have already been held; Legislator Stern will update the audience about the Task Force’s progress. All are welcome to this free talk, which is sponsored by the Brookhaven Retired Employees Association and open to the public. Visitors to the Lab or 16 and over must carry a photo ID.

Passport Service Now at Upton Post Office

Do you need to renew your passport, or get a new one? The Upton Post Office is now a Passport Acceptance Facility, and can also take passport photos. For more information or to make an appointment for a passport or photo, call Ext. 2539. Also available at the Upton branch are Post Office boxes where you can receive personal mail here at BNL. As a reminder, if you receive mail at your Lab building address and then leave the Lab, the Post Office is unable to forward your mail to your new address. If you have a post office box and leave the Lab, forwarding service is available.

BNL Speakers at Energy L.I. 2007 Conference, Farmingdale State College, 10/25, 26

Several BNL scientists will be among the speakers and participants at a two-day “Energy Long Island 2007 Conference,” which will be held on Thursday and Friday, October 25 and 26, at Farmingdale State College (FSC), organized by FSC and Stony Brook University’s Advanced Energy Technology Research Center. The conference, to be located at FSC’s Roosevelt Hall, will focus on renewable energy. On Thursday, following the 9:15 a.m. keynote speech on “Energy Research: Forefront and Challenges,” by Mildred Dresselhaus, Massachusetts Institute of Technology, BNL’s Doon Gibbs will talk at 10:15 a.m. on “Energy Initiatives at BNL.” On Friday, the 9 a.m. keynote speech on “Biology and Energy,” will be given by BNL’s Fritz Henn. Other BNL participants will include Lev Neymotin and Devinder Mahajan, BNL/SBU.

For more information, see <http://info.lu.farmingdale.edu/depts/met/solar/Energy-longisland-2007-draft1.pdf>.

BERA Social & Cultural Club Events
Halloween Dance Party, 11/2, Christmas Party, 12/14

On Friday, November 2, the BERA Social & Cultural Club (S&C Club) will hold a “Halloween Dance Party,” at the Brookhaven Center, with live music by “Lil’ Cliff & the Cliffhangers.” Prizes will be awarded for the best Halloween costumes! Admission is \$20 if paid before 10/26; \$25 if by e-mail reservation, and \$35 at the door. Only 200 tickets will be available. Tickets cover a buffet dinner, 7-8 p.m.; free swing dance lesson, 8 p.m.; the band, 8:30-11:30 p.m.; DJ music between sets and until midnight. Also, save the date of December 14 for the Club’s Christmas Party, with the 20-piece “Bill Wilkinson & the Long Island Sound Orchestra,” at \$25 for advance tickets, which include buffet supper, refreshments, and music.

Celebrate Diwali — the Festival of Light, 11/17



The BERA Indo American Association (BERA-IAA) is pleased to announce its annual Diwali Event — the Festival of Light — on Saturday, November 17, starting at 2:30 p.m. in Berkner Hall. As in previous years, this program will showcase the rich culture and traditions of the Indian sub-continent through music, dance, and the arts, performed by both professional and amateur artists. Authentic Indian snacks will be served during the intermission and a semi-formal Indian dinner will be offered after the cultural program.

Tickets are \$15; children 5-11: \$9; children 2-4, \$5; infants: free, but must be registered in accordance with safety regulations. For more details, visit <http://www.bnl.gov/bera/activities/iaa/diwali2007>. All reservations (including modifications and cancellations) must be made through this site. Reservations will be confirmed

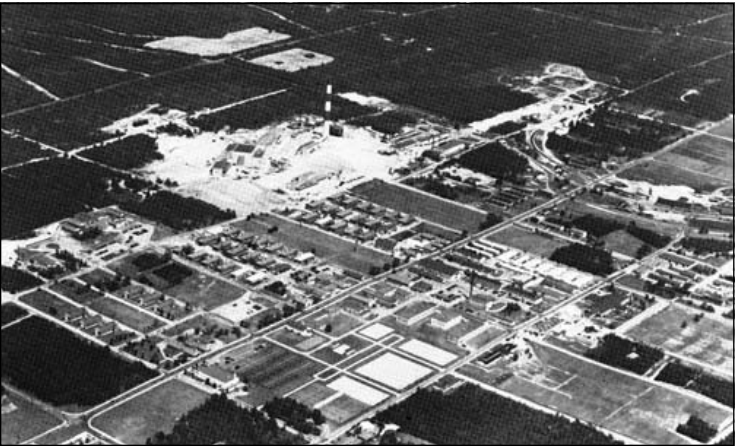
only after the full payment is received. Payments can also be made through PayPal using credit cards. Note that the BERA-IAA Diwali function has become very popular. Last year, many requests had to be declined because the seating capacity of the auditorium (450 people) may not be exceeded. For more information, go to www.bnl.gov/bera/activities/iaa, or e-mail bera-iaa@bnl.gov.

Diwali Volunteers Needed

Many volunteers will be needed for the event; both performers and stage or administrative assistants. Please contact us by using “request to contribute” link or by sending us e-mail (bera-iaa@bnl.gov) if you would like to help us. Student volunteers will get a certificate. Thank you.

Correction — Reflections on the 1947 Site Aerial

The Bulletin was embarrassed to receive an e-mail on “Anti-matter BNL or BNL From a Parallel Universe,” from Richard Chyilinski of Plant Engineering, in which he pointed out with tactful humor that the aerial of the Lab site in 1947 that appeared in the Bulletin of October 5, 2007, was printed in reverse. Here, with apologies, is a “this-universe” version, showing Railroad Avenue to the east and Bldg. 197 to the west of the stack, looking north. The good news is that when we held it up against the previous aerial, they did not annihilate each other.



CALENDAR

— THIS WEEKEND —

Friday, 10/19

***BNL 60: Symposium, Reception**
9 a.m.-5 p.m. Berkner Hall. Day-long symposium celebrating BNL science, followed by a reception. All are welcome. See p 1.

***Healthfest 5-km Fitness Run**
Noon-1 p.m. Biology Dept. Bldg. 463 start, rain or shine. Run of 5 km. counts as first half of biathlon. See below left to register.

Saturday, 10/20

***Blue Grass Concert**
8 p.m. Berkner Hall. Buddy Meriam & Back Roads, with guest Dee Harris. A BNL Music Club event. Tickets are \$15 in advance. See p. 4.

— WEEK OF 10/22 —

Monday, 10/22

***Healthfest Fitness Open House**
Noon-1 p.m. Gym. Tour facility.

Tuesday, 10/23

***Health, Fitness, Safety Fair**
11 a.m.-2 p.m. Berkner Hall. See information below, left.

Wednesday, 10/24

Verizon Wireless Demo
10:30 a.m.-2 p.m. Berkner Hall lobby. Representatives from Verizon Wireless will discuss the company’s services. Contact Mavi Baig, 917-881-2748.

***Healthfest 400-yard Swim**
11:30 a.m.-1:30 p.m. Pool. For all 18 and older. See notice at left to register.

***428th Brookhaven Lecture**
4 p.m. Berkner Hall. Kenneth Evans Lutterodt of the National Synchrotron Light Source will talk on “Breaking the Barrier Toward Nanometer X-ray Resolution.” All are welcome to this free talk, open to the public. Visitors to the Lab must carry a photo ID. Story, p. 1.

***GLOBE Meeting**
5:15 p.m. GLOBE, the BERA Gay, Lesbian, or Bisexual Employees Club willmeet. Call Debbie, Ext. 5664, for location.

Friday, 10/26

***Healthfest 800-yard Swim**
11:30 a.m.-1:30 p.m. Pool. Timed 800-yd. swim for all 18 and older. Part of biathlon. See notice at left to register.

WEEK OF 10/29

Monday, 10/29

IBEW Meeting
6 p.m. Centereach Knights of Columbus Hall, 41 Horseblock Road, in Centereach. A meeting for shift workers will be held at 3 p.m. in the union office. The agenda includes regular business, committee reports, as well as the president’s report.

Tuesday, 10/30

***Talk on Family-Friendly Policies**
4 p.m. Hamilton Seminar Room, Bldg. 555. Mary Ann Mason, University of California, Berkeley, will talk on “Do Babies Matter? The Effect of Family Formation on Men and Women in Science.” All are welcome to this free talk. Visitors to BNL of 16 and over must carry a photo ID.

Wednesday, 10/31

***429th Brookhaven Lecture**
4 p.m. Berkner Hall. BNL Historian Robert Crease, Stony Brook University, will talk on “How Big Science Came to Long Island: The Birth of Brookhaven Lab.” All are welcome to this free talk.

Note: This calendar is updated continuously and will appear in the Bulletin whenever space permits. Submissions must be received by the preceding Friday at noon to appear in the following week’s Bulletin. Enter information for each event in the order listed above (date, event name, description, and cost) and send it to bulletin@bnl.gov. Write “Bulletin Calendar” in the subject line.

BNL Music Club Sponsors Bluegrass Concert, 10/20
Featuring Buddy Merriam, Guest Dee Harris

A “Grand Ole Opry” concert featuring Buddy Merriam and Back Roads, with special guest Dee Harris, is scheduled on Saturday, October 20, at 8 p.m. in Berkner Hall. Sponsored by the BNL Music Club, the event is open to the public. Visitors to the Lab age 16 and over must bring a photo ID.

Buddy Merriam and Back Roads is an all-acoustic bluegrass-style band playing traditional favorites and original tunes on mandolin, banjo and guitar. They have performed on Country Music TV and at many Long Island venues, the Grand Ole Opry, Nashville, and the kick-off for the New York City Marathon, and appeared to rave reviews abroad. Dee Harris is a self-taught blues guitarist, songwriter, and vocalist who plays a mixture of Appalachian, Celtic, and classical Indian music.

Tickets are \$15 each if purchased in advance at the BERA Store in Berkner Hall, or \$20 at the door on the night of the show.

Classified
Advertisements

LABORATORY RECRUITMENT - Opportunities for Laboratory Employees

SR. ADMINISTRATIVE SECRETARY (A-3, part-time 75 percent or full-time) - Formal secretarial training is desired, plus six years' experience in a secretarial or administrative role. Demonstrated proficiency in Microsoft Office products including Word, Excel, PowerPoint, and Outlook is required; a thorough working knowledge of Laboratory and Departmental policies and procedures is desirable. Complete knowledge of the PeopleSoft Travel System, domestic and foreign, is important, as is knowledge of the BNL Web Requisition System and the Guest Information System (GIS). Must have strong communication, organizational and problem-solving skills, ability to handle multiple projects, prioritize workload, and handle non-routine office matters. Must be able to work independently, and maintain confidential administrative records and reports. The ideal candidate will be detail oriented, with excellent writing and editing skills. Experience in arranging conferences and meetings, travel, appointments, services, and information gathering is preferred. This position also entails the responsibility of Building Manager. Candidate should be self-starter, able to work independently (while being a team player) with minimal supervision, and must exercise good judgment. Nuclear Energy and Infrastructure Systems Division/Energy Sciences and Technology Department. Send resume to dianah@bnl.gov, referring to Position No. DH 4494.

OPEN RECRUITMENT – Opportunities for Lab employees and outside candidates.

MANAGER, NSLS-II ENVIRONMENT, SAFETY AND HEALTH (M-2) - Requires an advanced degree in science or a related discipline and 15+ years of relevant technical and extensive managerial experience. Comprehensive knowledge, skills and experience within the discipline of ES&H is also required, as well as knowledge of DOE safety standards. Excellent communication (oral and written) and interpersonal skills are required. Substantial experience in an accelerator background and certification in a safety specialty is desirable. Prior project management experience or formal project management training is also preferred. Will be responsible for developing and implementing an ES&H program to ensure that NSLS-II is designed, constructed, and operated in accordance with applicable BNL and DOE requirements to protect the worker and the environment. Will oversee the development and implementation of an Integrated Safety Management Program which incorporates ISO 14001 and OHSAS 18001 criteria. Will be responsible for the identification and preparation of required ES&H documentation and will plan and schedule required ES&H reviews throughout the design, installation, commissioning, and eventual operation of NSLS-II. Will provide guidance to project staff to integrate ES&H factors into all design and work activities. Candidate will report directly to the NSLS-II Project Director. Will supervise other ES&H staff. National Synchrotron Light Source II. Send resume to nsls2jobs@bnl.gov referring to Position No. PE3943.

SENIOR APPLICATIONS ENGINEER (I-8) – Requires a PhD in physics and eight years of relevant experience. Understanding of the software development paradigms in the field of Heavy Ion Physics, a strong background in programming using C++, FORTRAN, and GEANT, as well as excellent communication skills are required. Experience in recent development of geometry modeling would be an asset. As simulation coordinator, will work closely with software and computing core team working on maintenance and further development of the STAR software framework and ensure the simulation needs and software components are satisfied and integrated in time to interpret ongoing and forthcoming research data. Will actively participate in code development and coordinate the usage of computing farms at several institutes for Monte-Carlo production. RHIC/STAR Group. Physics Department. Send resume to morales@bnl.gov, referring to Position No. RM4566.

ADVANCED APPLICATIONS ENGINEER (I-7, reposting) - Requires a bachelor's degree in computer science or a related field. A minimum of five years of recent programming work experience designing and building data centric applications (client-server and web-based) using ASP, Visual Basic, .NET, Visual Studio 2005, and Crystal Reports in an enterprise environment is required. Must demonstrate a thorough understanding of object-oriented design concepts and relational databases; the current and future application and technology architectures relevant to the area served; and the fundamentals of requirement specification, design, coding, and testing of information systems. Must have proficiency in most, if not all of the following: .NET, IIS, Oracle, SQL Server, MS Access, HTML, JavaScript and Crystal Reports. Familiarity with Compliance Suite is a plus. Excellent oral and written communication skills are essential, as is the ability to handle multiple priorities and meet deadlines. Safety & Health Services Division. Send resume to morales@bnl.gov referring to Position No. RM4627.

APPLICATIONS ENGINEER (I-6, reposting) - Requires a bachelor's degree in computer science, business information systems, or a related discipline with four-plus years of PeopleSoft programming experience in version 8.0 or higher. Requires demonstrated proficiency in PeopleTools, PeopleCode, SQR development, and report development. Must demonstrate a thorough understanding of object-oriented programming, and the fundamentals of requirement specification, design, coding, and testing of business systems such as Payroll, Human Resources, Accounts Payable, Purchasing or Inventory. Must have excellent working knowledge of business applications. Superior technical and analytical skills are required in addition to possessing excellent communication skills and the ability to work well in a team-oriented environment. Will be responsible for programming business applications and preparing all pertinent application design specifications. Business Systems Division. Send resume to morales@bnl.gov referring to Position No. RM3601.

TECHNOLOGY ENGINEER (I-6) - Requires a bachelor's degree or equivalent, preferably in computer science or related discipline, and a minimum of three years of relevant experience. The ideal candidate will possess advanced UNIX administrative skills and have kernel-level Linux and/or Solaris experience including OS installation, name service configuration (LDAP/DNS), security (host-based firewalls, Kerberos, PKI), web services (Apache, proxies), software package management and general network monitoring and support. Basic experience installing and configuring network hardware and software components and basic knowledge of Network Management Tools (Cisco Works, Cacti, etc) are a plus. Responsibilities include daily operation/management of GCE (General Computing Environment) servers, addressing user community requests, carrying out hardware/software installation & upgrades, evaluation of new software/hardware technologies and contributing to the operation/management of general services in the facility. This position will support computing needs of the RHIC and USATLAS physics programs. Physics Department. Send resume to morales@bnl.gov, referring to Position No. RM 4565.

TECHNOLOGY ENGINEER (I-6) - Requires a bachelor's degree in computer science or related discipline or equivalent, and 3+ years of recent relevant work experience supporting enterprise Windows applications in a campus-wide heterogeneous environment. Microsoft certification in administration, engineering and programming a plus. Enterprise level Infrastructure Management, supporting and diagnosing server networking issues in a campus LAN environment and experience with enterprise level monitoring required. Experience with one or more of the following required: Extensive work with Active Directory & Windows 2003 in a campus LAN environment. Must be able to implement strategies to ensure all applications and interfaces are secure from unauthorized access utilizing configuration settings, firewall rules and architectural approaches. Design deployment and administration of group policy objects, IIS, ISA, DFS and knowledge of VB Scripting and/or Java Scripting required. Knowledge of Exchange, SMS, System Center,

NetIQ a plus. SQL 2000/2005 management and reporting experience a plus. Security fundamentals such as WSUS, IPSEC, PKI and Kerberos a plus. Familiarity with FISMA compliance and NIST security controls a plus. Enterprise monitoring integration and enterprise networking support a plus. Responsibilities include the administration of server, infrastructure, and applications in a data center managing 2000 Windows servers. Applications supported by this group include but are not limited to PeopleSoft, enterprise Exchange, home grown and “off the shelf” web apps, various administrative apps for business support, Net IQ, ISA, Oracle and SQL. Job will focus on integrating enterprise level monitoring with administrative systems such as Exchange, PeopleSoft, Active Directory, WEB applications, hardware support, event correlation and network communications. Send resume to morales@bnl.gov referring to Position No. RM4720.

Motor Vehicles & Supplies

05 MAZDA RX-8 - white w/blk int., a/t, sport suspension, 18” wheels, ext. warr., perf. cond. 7,600 mi. \$22,000. Ext. 5665.

04 CONTINENTAL CARGO ENCL. TRAILER - rear barn drs, side dr, 15” tires, spare, tie downs, like new. \$1,750/neg. 928-1254.

01 FORD F350 - 4X4,Crew Cab,Shrt Bed, Lariat, 7.3 Turbo Dsl, a/t, alloys, bedlnr/cvr., ext. warr., 87K mi. \$19,000/neg. 681-8634.

98 FORD EXPEDITION XLT - 4W/D, 5.4 ltr, 3rd seat, leather, 6CD, loaded, Immac., (KBB val \$8,100). 128K mi. \$5,995. Ext. 7294.

97 SAAB 900SE - 4 cyl turbo, sunfr, htd lthr seats, a/t, abs, 4 dr., hback. 80K mi. \$4,900/neg. David, Ext. 2604 or 473-2473.

86 LINCOLN LSC - Blk, full pwr, new exh., lthr., s/roof. 89K mi. \$1,800. 516-724-2642.

84 CHEVY MONTE CARLO SS - All orig/stock, orig paint, 2 owner car, always maint, grt cond, easy restor. \$2,500. Ext. 7294.

Boats & Marine Supplies

23' SUNRUNNER 230SB - 1984 225 volvo/penta I/O fresh water cooled mid-cabin full galley head full canvas, great cond. \$5,250/neg. 278-2192.

230 SEARAY CUDDY CABIN - '90, 23 cu ft., 260 merc w/ approx. 450 hrs. mostly fresh water, full canvas excel. cond., \$6600. Roy, Ext. 6392 or 433-0833.

Furnishings & Appliances

AIR CONDITIONER - used, digital, works fine, ask \$35. Nizam, Ext. 4360 or 344-1200.

ALL WOOD FUTON - great shape, always covered, \$100. Pat, Ext. 3438.

BEDROOM SET - qu. platform, mirr back, lights, 2 tall cabinets, armoire, drssr w/ mirr, misty oak wood, \$375. Ext. 5026.

COUCH - Victorian, mauve, great cond., 89”l, 35”w, 27.5”h; you pick up, ask/\$75. Sue, 775-8160.

FREEZER - frigidaire 14 cu. ft., like new, excel. cond., \$150. Katherine, Ext. 2269.

SOFA & LOVESEAT - Loose pillow back, excel. cond., pic avail., \$150 and \$75 respectively. Susan, Ext. 7235 or 399-7997.

TABLE LAMPS - 2, w/mtchg beige shades, Chinese motif, brass trim, clean, excel cond, \$60/pr, have pix. Ext. 4567.

Audio, Video & Computers

BABY GRAND PIANO - Baldwin, mtching bench, tuned to concert pitch, walnut, 4’8”, excel., have pix, \$3,600. Ext. 4567.

PIANO - Emerson console w/bench, excel., ask \$525. Robert, Ext. 4867 or 278-2192.

PRINTER - portable, color, Canon BJC-85 w/s/ware & cable, excel. \$200. Ext. 3217.

XBOX W/EXTRAS - first gen. X-Box console w/cables 3 controllers DVD remote Free Game \$120/O.B.O. 205-0501.

Sports, Hobbies & Pets

CASIO KEYBOARD - w/stand, excel. cond., \$60. Ext. 2716 or 878-2425.

GLASS AQUARIUM - 9 gal, new w/lid; perfect for sm. animals/fish. \$5. 775-8160.

TREADMILL - ProForm Distance 660v Hrt rate mon., fan, auto. incline, like new, pd/\$700, ask/\$400, will del. 516-449-1623.

Tools, House & Garden

GENERATOR - Robin, 2000 Watts never used. \$125 firm. Ext. 5551 or 772-4751.

RIDING MOWER, 32 - Lawn Chief, elec. start Briggs & Stratton eng. Runs well, \$75. Richard, Ext. 3239.

Miscellaneous

BIRDCAGE - Lg. birdcage, used for love birds, can be used for parakeets. \$25. Ext. 5263 or 375-7959.

DISHES - Pfaltzfraff, Waverly Garden Room, w/serving pieces for 8 and accessories, \$45. Pat, Ext. 3438.

ENGAGEMENT RING - Marquise Ctr Stone, w/10 round diamonds & 20 baguette diamonds. 14k Gold. Ask \$900. Ext. 2269.

FAX MACHINE - Brother Intellifax 1450MC, works fine \$40/obo. 682-8684.

FISHPOND FILTER; TABLE - Biological Filter Housg for pond, new in box \$20; Hvy Duty Folding Tbl \$10. 281-4871. Ext. 7837.

Benefits Open Enrollment: Now Until 10/31

The open enrollment period for medical and dental benefits, the health care and dependent daycare reimbursement accounts, and the vacation-buy plan began on October 15 and will continue through October 31. During this time, eligible participants may add or drop medical and/or dental coverage, change from one medical and/or dental plan option to another, add or drop family members covered, and/or sign up for the reimbursement account(s) and the vacation buy plan. All changes made during the open enrollment period will be effective on January 1, 2008.

Cost Increases

At the Lab as elsewhere, the cost of medical programs has increased, including the cost for the CIGNA and Vytra medical programs. Since BNL is self-insured for its CIGNA and Vytra medical plans, increased claims equal increased plan costs for both the Lab and employees. Therefore, employee contributions to these medical programs for 2008 have had to go up. This necessity is regretted; it is a hardship that is being experienced across the nation.

2008 Open Enrollment Booklet

All employees should have received a 2008 open enrollment booklet via interoffice mail. It will provide items to consider when making elections, comparisons of the medical and dental programs, and the cost of benefits for 2008. It also contains information on many other benefits available through the Lab.

All are encouraged to review the information provided in the open enrollments booklet. Those who decide to make changes to medical and/or dental coverage must complete forms that are available through the Benefits Office, Bldg. 400B.

Reimbursement Account and Vacation Buy Sign-Up

Reimbursement account and vacation buy elections do not carry over from one calendar year to the next, so if you want to participate in 2008, you must sign up for this benefit. To participate, you must complete an open enrollment form or enroll online. Forms are available through the Benefits Office, Bldg. 400B.

To enroll online: for reimbursement accounts, log into PeopleSoft and click the following links: Employee Self Service, Benefits, Open Enrollment, and Reimbursement Accounts. For the vacation-buy plan, the links are: Employee Self Service, Benefits, Open Enrollment, and Vacation Buy.

If you enroll online for the reimbursement accounts or the vacation buy plan, you will receive an e-mail confirmation of your election. For more information, contact the Benefits Office, Ext. 5126 or Ext. 2877.

Wanted

FIREPLACE INSERT OR WOOD STOVE - Have one unused? Help me make my f/ place efficient. Jim, Ext. 3293 or 929-7289.

FLORDIA RENTAL - Orlando, 4 bdrm. home/condo from Dec 24th - 27th, family vacation. Mamta, Ext. 2176.

GARDEN HELP - student, young person needed as helper for gardening in Shoreham. 821-1435.

VCR, - analog, for playing/recording, gd. cond. Frank, 569-5482.

Free

CLIFF'S NOTES - similar books, many titles. Morris, Ext. 4192.

KITTENS - 2 males, 1 blk, 1 striped, 6 mo. old, vet checked, all shots, house trained. Barbara, Ext. 3346, 928-8112.

TOASTER OVEN - Oven works, toaster switch NG. Morris, Ext. 4192.

Car Pool

MEETS IN PLAINVIEW - Established 3-person car pool , looking for 4th. person. 8:00 to 4:30 shift. Ron Ryan, Ext. 6068.

Lost & Found

FOUND: BRACELET - outside Bldg. 400. Call to identify. Ext. 3670.

For Rent

BELLPORT - 2 bdrm apt in peaceful, quiet home. No pets/smkg, \$1100 pays all. \$1,100/mo. 803-2588.

BROOKHAVEN - room in house on quiet acre, 9 mi from Lab; cable TV, Int., CAC, w/d,use of house, util incl. \$475/mo. Sidney, 286-4028.

CORAM - 1 br apt, kit, bath, prkg. incl., cable, heat, elec., no smkg/pets, 12 mins to bnl. \$950/mo. John, 924-3492.

EAST YAPHANK - 1 bdrm. apt., incl. all util. 10 min. from BNL. \$1,000/mo. 729-6802.

MANOR PARK - 1 bdrm. apt., new rugs and bath, 7 min. to lab, incl. all except phone and cable. \$900/mo. \$900/mo. Cheryl, 772-2474.

MASTIC - Bsmt apt, 2 BR, 1 Bath w/shower-no tub, Kitchen/LR combo, thermostat, sep. entr., wdws in all rooms, utilities incl, avail. 11/1 \$1,200/mo./neg. Doreen, 766-6717.

MILLER PLACE - Studio.One large room w/skylite, full bath, kitchen, private patio & entrance,a/c, Cable. Quiet street. No smoking/pets. Best-one person. 14 mi. to BNL. \$700/mo. 428-7065.

ROCKY POINT - 1-bdrm. apt., kit., l/r, bath, pvt. driveway/ent., no smkg./pets, 1 mo. sec., all utilities included except electric. \$795/mo. Ron or Kim, 821-3287.

SHOREHAM - share house w/professional, part furn., bdrms, 7 mi. from BNL, internet/tv incl., no smkg/pets, single preferred. \$600/mo. 744-3543 or 413-1966.

WADING RIVER - Cottage 2 bdrm, 1 bth, lvg/dr combo, newly updated, util. xtra, no smkg/pets, 15 min to Lab, near beach. \$850/mo. Michael, Ext. 4202.

ADIRONDACK AREA - 3 bdrm house, all amenities, adjacent family restaurant, NW of Albany, \$900/week or \$400/weekend. \$900/wk. Janet, 869-5618, jtempel@optonline.net.

ANTIGUA - T/share wk 11/24-12/1, grd flr, studio w/patio leading to pool, beach view. www.antiguavillage.net. Must sell! \$600/wk./neg. Michael, Ext. 2550 or 744-7360.

For Sale

BELLPORT - 4-BR. ranch, 2 bth, l/r w/dble opening fp to den, d/r, eik, oak flrs, screened deck on priv. yard, laundry rm, fin. bsmt: w/4th BR, bar, full bth, 2 rms; gar., 2 sheds, sprinklers, gd. cond. \$425,000; 949-7797.

CABO SAN LUCAS, PUERTO VALLARTA, NONE - Time Share, top shelf , 24 yrs. 2 wks. floating anytime. \$9,500/neg. 698-0708.

EAST MORICHES - Ranch, 3 bdrm, 2.5 bath, kit, l/r, t/p, fin. bsmt, skylights, applis, cvrd porch, patio, 1/2 acre, cul-de-sac, low taxes. \$415,000/neg. 882-0519.

MASTIC BEACH, NEW CONSTRUCTION, WATER VIEW - 3 bdrm, 2 1/2 bath, laundry rm, wd flrs, sprklr syst, many upgrades - quiet n'borhd, close to Lab \$310,000/neg. Joe, 516-982-9835.

MIDDLE ISLAND - 1BR co-op, new laminate, carpet, deck; bright, quiet, loft-like; 10 min to BNL. \$116,000 413-478-1621.

SHOREHAM - 4 bdrm., 2.5 bath Col., frml l/r and d/r, den w/fp, lg. kit. w/dinette, 2 car gar., fin. bsmt., igs, SWR schools, much more \$569,000/neg. Ext. 2253.

SOUTH ROYALTON, VT - 2 homes on 3.5 acres, incl. furn., extras, priv., 1st: 2 bdrm, 1 bath, finbsmt, gar., wbs, w/d; 2nd: 1 bdrm, 1 bath, bsmt, washer, wbs, pics avail. \$330,000/neg. 466-8637.

WEST PALM BEACH, FL - completely renovated, cabinets, appli., etc. \$46,500/ neg. 516-375-7330.

In Appreciation

I want to thank everyone for their support and caring for the loss of my wife.

— George Elias

Lois and I thank all our friends for their kind thoughts and support after the passing of my mother. She didn't suffer during her short illness, and that plus your kindness helped us to get through a very difficult time. — George Greene and Lois Caligiuri