



## 450<sup>th</sup> BROOKHAVEN LECTURE

Roger Stoulenburgh D0040102

### Nicholas Samios To Reflect On Science, Government Interaction, Possible Lessons

The 450th Brookhaven Lecture, to be held on Wednesday, May 6, will be given by BNL Distinguished Senior Physicist Nicholas Samios, Director of the RIKEN BNL Research Center and former Lab Director. Samios will discuss “Personal Reflections on the Interaction of Science and Government and Possible Lessons for the Present Crisis,” at 4 p.m. in Berkner Hall.

All are welcome to this free lecture, which is open to the public. Refreshments will be offered before and after the talk. Visitors to the Lab of 16 and over must carry a photo ID.

As many members of his prospective audience know, Samios’s distinguished achievements in science and administration qualify him more than most to take

on this topic. Having received his B.A. and Ph.D. degrees in physics from Columbia University in 1953 and 1957, respectively, he joined the Lab in 1959. In addition to his work in experimental physics, he served as Physics Department Chair, 1975-81; and Deputy Director for High-Energy & Nuclear Physics, 1981-82.

As a researcher, Samios made many of the particle discoveries that have helped define and lead to the acceptance of the “Standard Model” of particle physics, the accepted theory that explains known particle interactions. In particular, he is noted for the discovery of the phi meson and the omega minus hyperon, crucial elements delineating the symmetry of hadrons, which

See *Samios Lecture* on pg. 2

### NAS Honors BNL’s Joanna Fowler With Award in Chemical Sciences

Joanna Fowler, Director of the Radiotracer Chemistry, Instrumentation and Biological Imaging Program at BNL, was honored with the National Academy of Sciences Award in Chemical Sciences on April 26, at the Academy’s 146th annual meeting in Washington, DC. Fowler received a medal and prize of \$15,000 supported by the Merck Company Foundation for her innovative research in the chemical sciences that contributes to the better understanding of the natural sciences and to the benefit of humanity.

Established by the U.S. Congress in 1863, the Academy is a private organization of scientists and engineers dedicated to the furtherance of science and its use for the general welfare. Upon request, the Academy is an official advisor to the federal government in any matter of science or technology.

“I am honored to be a member of the National Academy of Sciences and delighted to receive this award, which recognizes how research in chemistry can have a significant impact on human health,” Fowler said.

Fowler was cited “for exceptional accomplishments in the synthesis of positron-emitting chemical probes, and for their implementation in biomedical imaging and studies of *in vivo* biochemistry, which have had a major impact on human health worldwide.”

Fowler’s current research focuses on using a medical imaging technique called positron



Joseph Rubino D2520406

emission tomography (PET) to study the brain circuits that are disrupted during drug addiction. Some of her early studies include imaging the uptake and movement of cocaine in the human brain, which shed light on why the drug is so powerfully addictive. She is also involved in PET studies to understand the action of therapeutic drugs and facilitate the introduction of new drugs into the practice of medicine.

Fowler’s recent work is centered on variations in MAO genes and how they affect personality and vulnerability

to psychiatric disorders. In earlier research, she discovered that cigarette smokers have reduced levels of monoamine oxidase (MAO), an enzyme that breaks down dopamine, the neurotransmitter that mediates reward, motivation and movement. This finding may account for the high rate of smoking in individuals who are depressed or addicted to drugs.

In 1976, Fowler and her colleagues synthesized 18F-fluorodeoxyglucose (FDG), a radiotracer used in PET. Today, FDG is widely used in hospitals and

See *Fowler* on pg. 2



Joe Rubino D280607

### Nanoscience Safety at BNL

The potential risks associated with nanoscience are largely unknown. Therefore, BNL has established a very conservative approach for providing a safe workplace and also protecting the environment.

“Since engineered nanoparticles have unique properties and are so small in size, they may present potential hazards to health and the environment,” said Robert Sabatini, Environment, Safety & Health (ES&H) Coordinator at the Lab’s Center for Functional Nanomaterials (CFN). “Due to their small size, nanomaterials can be more chemically reactive, and they can be more readily inhaled than bulk materials of the same composition.”

Government agencies have not yet set occupational and environmental exposure limits for engineered nanomaterials. Naturally occurring nanomaterials can be found in forms such as ocean spray and volcanic ash, but creating engineered nanomaterials in a lab is still a relatively new endeavor. There are already products on the market as diverse as tennis racquets and sunscreen that contain engineered nanomaterials.

To protect both workers and the environment, BNL follows DOE guidance concerning safe handling of nanomaterials, not just at the CFN, but throughout the Lab’s departments. BNL mandates strict controls for nanoscience research at its site that involves unbound nanoparticles — nanoparticles that are not bound to a substrate or immersed in liquid and thus could escape into the atmosphere. Controls include the use of high-efficiency particulate air (HEPA) filters and closed systems such as glove boxes, which prevent nanoparticles from escaping into the atmosphere. When they are no longer efficient, HEPA filters will be disposed of as hazardous waste and replaced with new ones by appropriately trained personnel.

BNL also established an Institutional Nanoscience Safety Advisory Committee, which reports to the Lab Director. The committee consists of scientists, support staff, safety and health managers, and other experts who meet quarterly to review changes in guidance or regulations and to make recommendations for

See *Nanoscience Safety* on pg. 3

### ‘Nanotechnology: Its Promise and Challenges’ Talk by Vicki Colvin, Rice University, 5/14

Vicki Colvin of Rice University will give a talk titled “Nanotechnology: Its Promise and Challenges” on Thursday, May 14, at 4 p.m. in Berkner Hall. The talk is free and open to the public. Visitors to the Lab age 16 and older must carry a photo ID.

Nanotechnology-enabled systems, with dimensions on the scale of a billionth of a meter, offer great promise for solving difficult social problems and creating enormous possibilities. Their small size, high surface area, and unique properties all provide high-value materials useful in existing industries, ranging from transportation to pharmaceuticals. Of particular interest is the potential for nanotechnology to treat cancer, clean water, and create clean energy technologies.

In addition to highlighting these innovations, the talk will also touch on the emerging debate about whether consumers want or need the lifestyle that nanotechnology may make possible. Some of these concerns are centered on the idea that nanomaterials may be a new kind of pollutant. In particular, the “safety by design” model emerging for nanomaterials’ production may completely change traditional concepts of risk management.

Other issues relate to larger social concerns about whether nanotechnology could be used to enhance human performance or whether the new economies for manufacturing would disenfranchise poor people tied to the “non-nano” world. Healthy dialogue about these concerns can help create a more sustainable and socially acceptable industry.

Vicki Colvin received a bachelor’s de-



gree in chemistry and physics from Stanford University in 1988 and a Ph.D. in chemistry from the University of California, Berkeley, in 1994. During her time at Berkeley, she was awarded the American Chemical Society’s Victor K. LaMer Award for her work in colloid and surface chemistry. Colvin completed her postdoctoral work at AT&T Labs.

In 1996, Rice University recruited Colvin to expand its nanotechnology program. Currently, she is Rice’s Kenneth S. Pitzer-Schlumberger Professor of Chemistry and Professor of Chemical & Biomolecular Engineering. She is also

See *Colvin Talk* on pg. 3



CALENDAR  
OF LABORATORY EVENTS

- The BERA Store in Berkner Hall is open week-days from 9 a.m. to 3 p.m. For more information on BERA events, contact Andrea Dehler, Ext. 3347, or Christine Carter, Ext. 2873.
- Additional information for Hospitality Committee events may be found at the Lollipop House and the laundry in the apartment area.

— REGULARLY —

**Weekdays: Free English for Speakers Of Other Languages Classes**

Beginner, Intermed., Adv. classes, various times. All welcome. Learn English, make friends. See <http://www.bnl.gov/esol/schedule.html> for schedule. Jen Lynch, Ext. 4894

**Mondays: BNL Social & Cultural Club**  
Noon–1 p.m., Brookhaven Center, South Room, free beginners dance lessons. Rudy Alforque, Ext. 4733, [alforque@bnl.gov](mailto:alforque@bnl.gov)

**Mondays & Wednesdays: Pilates**  
12:15–1:15 p.m. Mons.; 5:15–6:15 p.m. Mon. & Wed. Rec. Hall. \$75/once/wk., Registration is required. Ext. 5090

**Mondays & Thursdays: Kickboxing**  
\$5 per class. Noon–1 p.m. in the gym. Pay as you go. Ext. 8481

**Mon., Thurs., & Fri.: Tai Chi**  
Noon–1 p.m., B’haven Cntr N. Rm. Adam Rusek, Ext. 5830, [rusek@bnl.gov](mailto:rusek@bnl.gov)

**Tuesdays: Hospitality Coffee**  
10:30 a.m.–noon, Rec. Hall lounge. All welcome. Ext. 5090

**Tuesdays: BNL Music Club**  
Noon, B’haven Center, N. Room. Come hear live music. Joe Vignola, Ext. 3846

**Tuesdays: Knitting Class**  
2–4 p.m. Rec. Hall. All levels of skill. Ext. 5090 for information.

**Tuesdays: Jiu Jitsu**  
6:30–7:30 p.m. Gym. All ages, 6 yrs. to adult. \$10/class, pay as you go. Tom Baldwin, Bldg. 452, Ext. 4556

**Tuesdays: Toastmasters**  
3 monthly meetings: 2nd Tuesday.: Noon, Berkner, Rm. D: 1st & 3rd Tuesdays, 5:30 p.m., Bldg. 463, Rm 160. Guests, visitors welcome. <http://www.bnl.gov/bera/activities/toastmstrs/>

**Tue., Wed. & Thurs.: Rec Hall Activities**  
5:30–9:30 p.m. General activities, TV, ping pong, chess, games, socializing. Christine Carter, Ext. 5090

**Tuesday & Thursday: Aerobic Fitness**  
5:15 p.m., Rec. Hall. 10 classes for \$40 or \$5 per class. Pat Flood, Ext. 7866, [flood@bnl.gov](mailto:flood@bnl.gov)

**Tuesday & Thursday: Aqua Aerobics**  
5:30–6:30 p.m., Pool. Registration is required. Ext. 2873

**Tuesday & Thursday: Jazzercise**  
Noon–1 p.m. Rec. Hall. 8-wk session, \$90 2x/wk. Holbrook & Wading River locations too. Registration is required. Ext. 2873

**Wednesdays: On-Site Play Group**  
10 a.m.–noon. Rec. Hall. Infant/toddler drop-in event. Parents meet while children play. Restarts 9/10. Petra Adams, 821-9238

**Wednesdays: Ballroom Dance Class**  
B’haven Center, N. Ballroom. Instructor: Giny Rae. Three 1-hr. classes, starting at 5:15 p.m. Ext. 3845

**Wednesdays: Yoga**  
Noon–1 p.m., B’haven Center. Free. Ila Campbell, Ext. 2206, [ila@bnl.gov](mailto:ila@bnl.gov)

**1st Wednesday of month: LabVIEW**  
1:30–3 p.m., Bldg. 515, 2nd fl. Seminar Rm. Free technical assistance from LabVIEW consultants. Ext. 5304, or Terry Stratoudakis, (347) 228-7379

**Thursdays: BNL Cycletrons Club**  
Noon–1 p.m., First Thurs. of month. Berkner, Rm. D. Toni Hoffman, Ext. 5257

**Thursdays: Reiki Healing Class**  
Noon–1 p.m., Call for location. Nicole Bernholz, Ext. 2027

**Fridays: BNL Social & Cultural Club**  
Noon–1 p.m., B’haven Center, S. Room, free beginners dance lessons. 7–11:30 p.m. N. Ballroom, Dance Social, workshops. Rudy Alforque, Ext. 4733, [alforque@bnl.gov](mailto:alforque@bnl.gov)

**Fridays: Family Swim Night**  
5–8 p.m. BNL Pool. \$5 per family

**Fridays: Family Gym Night**  
5–8 p.m. Family gym activities. Free

**ESOL Offers Coaching For Presentations of Speeches, Papers**

The English for Speakers of Other Languages (ESOL) Program is offering personalized presentation assistance for non-native scientists. Assistance includes focus on improving pronunciation, developing the stress and intonation of English, and preparing the presentation in an audience-friendly way. Please feel free to contact Jennifer Lynch, ESOL Program Coordinator, at [jlynch@bnl.gov](mailto:jlynch@bnl.gov) or call Ext. 4894 to make an appointment.

# New Solar Energy System Displayed For Earth Week

Members of the Environmental Protection Division held an Environmental Vendor Fair at Berkner Hall on April 22 as part of their Earth Week celebrations. At the event, New Age Energy displayed a Tri-Generation solar power system that emits electricity, heat, and light simultaneously. Located between Berkner and the parking lot, the 7,000-pound, sun-tracking, 20-by-20 foot structure attracted much attention from the Lab community.

The structure is designed to rest on the ground, on flat rooftops, or create a parking structure for cars underneath. Its solar panels use computer chips to increase their efficiency to 35 percent, much higher than the eight percent efficiency of others available. This relatively small unit can power an entire house, generating 32 kilowatts of electricity and 42 kilowatts of heat.

“Can I get one in my backyard?” you may ask. For an out-of-pocket cost of \$40,000 — not including

possible tax breaks or discounts — you receive a four-unit power system that makes up for its cost in four to five years, effectively supplying more than the power your house needs and giving over half of what it creates and stores to the power grid.

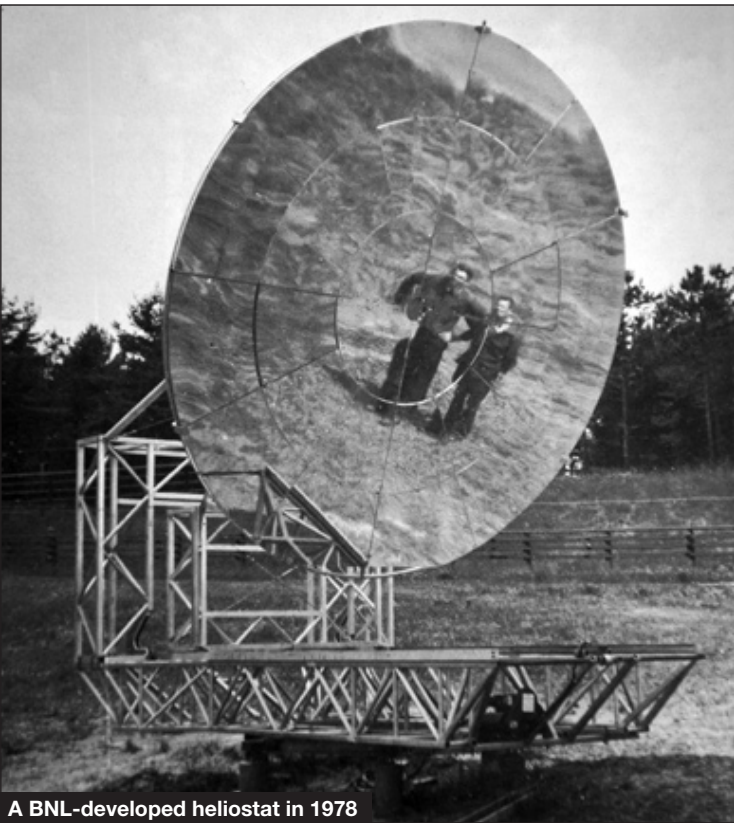
This system also has a unique air-conditioning process, Long Island Green Power Associates President Jeffrey DiLandro said. To reduce energy usage in a building, the heat produced from the system removes humidity from the air without the use of refrigerant or a compressor. The air becomes purified by traveling through a salt solution, which picks up bacteria and pollen.

“If we replaced, for example, all the landfills on Long Island with these, we could provide 40 percent of Long Island’s power,” New Age Energy CEO Michael Betsch said. “We expect the efficiency of these solar cells to be developed to 50 percent by 2015.”



Joseph Rubino D5000406

## Now and Then!



A BNL-developed heliostat in 1978

*Samios Lecture from pg. 1*  
ultimately led to the quark model of elementary particles, a pillar of the Standard Model.

Samios also made significant contributions through a decade-long study of neutrino interactions, both at BNL and Fermi National Accelerator Laboratory. These studies included the discovery of the charmed lambda — the first charmed baryon observed — and early measurements of neutrino electron elastic scattering and limits on neutrino oscillations.

As BNL Director, 1982-97, Samios led the effort to build

the Relativistic Heavy Ion Collider (RHIC), the world’s highest energy facility for nuclear physics, which began operating in 2000. A Distinguished Senior Scientist since 1997, he became Deputy Director of the RIKEN/BNL Research Center (RBRC) in 1998, and Director in 2003. RBRC is a research center at BNL funded primarily by the Japanese RIKEN Laboratory to explore both the theoretical and experimental physics potential of RHIC. Samios also held the position of adjunct professor in the Physics Department at Columbia University from 1970 to 1995.

### CIGNA Representative

A CIGNA Healthcare representative is available to assist with claims issues you have been unable to resolve yourself through CIGNA’s Customer Service number (1-800-CIGNA24) — by appointment only. You need to provide all pertinent documentation. To schedule, call Ext. 5126.

### LIANS Dinner Meeting, 5/5

At the next dinner meeting of the Long Island Chapter of the American Nuclear Society (LIANS), on Tuesday, May 5, Edward Sierra of BNL’s Quality Management Office will talk on “Nuclear Renaissance: Training and Education.” Sierra will present topics covered at the February ANS Conference on Nuclear Training and Education in Jacksonville, Florida. The LIANS meeting will be held at South Shore Restaurant, 388 Medford Ave., Patchogue, (631) 475-7926. Complimentary appetizers/cash bar will start at 6 p.m., dinner at 7 p.m., and Sierra’s talk at 8 p.m. The cost is \$25/person. To reserve, leave a message with Arnie Aronson, Ext. 2606, by Monday, May 4.

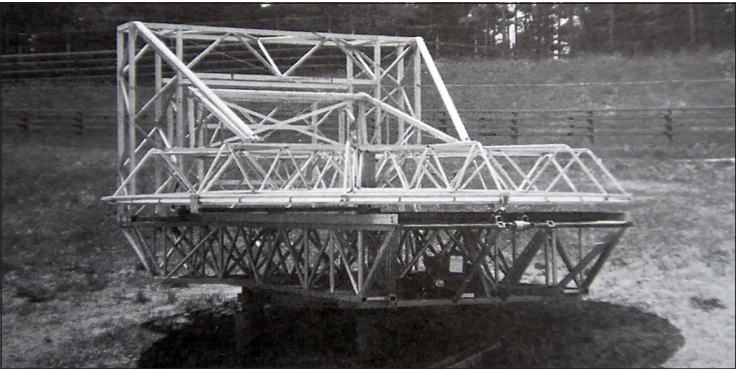
April 22 is not the first time that solar-powered energy systems have been at the Lab.

Thirty-one years ago, BNL electrical engineer Garry Cottingham and his team, including Peter Montemurro, Charlie Schmidt, and Ed McKenna, developed a solar heliostat, or energy concentrator. Cottingham also cited the late BNL accelerator physicist Kenneth Green as his 1974 partner in starting the project, which was funded by DOE’s Energy Technology and New York Energy Research & Development Agency. (See Bulletin of 08/11/1978: <http://www.bnl.gov/bnlweb/pubaf/bulletin/1947-1995/1978/11081978.pdf>).

<http://www.bnl.gov/bnlweb/pubaf/bulletin/1947-1995/1978/11081978.pdf>

The purpose of this heliostat, similar in size to its modern counterpart, was to generate steam energy to compete with fuel-oil prices during the 1973 energy crisis. Shaped like a dome and composed of 28 lightweight mirrors, the heliostat tracked the sun and could shut down and fold itself up in inclement weather (see photos left and below). The system never made it to commercial production when gas prices dropped and funding declined.

— Satya Shanmugham



Samios’ many honors include: the 1980 E.O. Lawrence Memorial Award, the 1980 New York Academy of Sciences Award in Physical & Mathematical Sciences, the 1993 W.K.H. Panofsky Prize, and the 2001 Bruno Pontecorvo Prize of the Joint Institute for Nuclear Research in Dubna, Russia. He was elected to the National Academy of Sciences in 1982 and is a Fellow of the American Physical Society, the American Academy of Arts and Sciences, and the Akademia Athenon. He is also widely recognized as an outstanding speaker.

Not to be missed!

— Liz Seubert

### Fowler from pg. 1

research centers throughout the world for studying the brain and diagnosing cancer.

After earning a Ph.D. in chemistry from the University of Colorado in 1967, Fowler carried out postdoctoral research at the University of East Anglia, in Norwich, England, and at BNL, then joined the Lab in 1969. Her honors include the Society of Nuclear Medicine’s Paul Aebersold Award and DOE’s E.O. Lawrence Award, both received in 1997; the American Chemical Society’s Francis P. Garvin-John M. Olin Medal in 1998; and the Glen T. Seaborg Award in 2002. She was elected to the National Academy of Sciences in 2004, and earlier this year she was inducted into the Long Island Technology Hall of Fame. Fowler has published about 350 peer-reviewed articles and holds eight patents for radiolabeling procedures. Her research is funded by DOE’s Office of Science, which provides infrastructure support for technology development, and the National Institutes of Health.

— Diane Greenberg



# Annual Joint NSLS/CFN Users’ Meeting, 5/18-20

Mark your calendars for the annual Joint National Synchrotron Light Source (NSLS)/Center for Functional Nanomaterials (CFN) Users’ Meeting, to be held on May 18-20. The meeting is an

ideal time to interact with the wide variety of scientists, who carry out research enabled by the NSLS and the CFN, and to hear the latest about NSLS-II through workshops, invited talks, the poster session, and

exhibits showcasing advances in equipment and instrumentation. This year, the Tuesday Main Meeting and Plenary sessions will be open to all, free of charge. BNL employees and guests are

also welcome to register for workshops, and other meeting events (registration and a nominal fee are required). For more information, go to: <http://www.nsls.bnl.gov/users/meeting/page.aspx?id=home>.

*Colvin Talk from pg. 1*  
co-director of the Richard E. Smalley Institute for Nanoscale Science and Technology and Director of the Center for Biological and Environmental Nanotechnology, both Rice University institutions.  
Colvin has garnered numerous awards for her teaching abilities, including Phi Beta Kappa’s Teaching Prize for 1998-1999 and the Camille Dreyfus Teacher Scholar Award in 2002. Also in 2002, she was named one of *Discover* magazine’s “Top 20 Scientists to Watch,” and she received an Alfred P. Sloan Fellowship. Her research in low-field magnetic separation of nanocrystals was named among the top five nanotech breakthroughs of 2006 by the *Forbes/Wolfe Nanotech Report* and resulted in her being named “Best and Brightest” honoree by *Esquire* magazine. A Fellow of the Association for the Advancement of Science, Colvin is the author of over 75 articles and holds patents to seven inventions.  
— Diane Greenberg

## Benefits Office Reminder: Enroll New Dependents Within 30 Days

The birth of a child, adopting a child or getting married are all exciting life events. Remember to enroll any newly attained dependents in your medical and/or dental programs within 30 days from the date your new dependent is born, adopted, or otherwise becomes eligible for coverage. If you do not enroll your dependent through the Benefits Office within 30 days from the date he/she first becomes eligible, you will be required to wait until the next Open Enrollment Period to enroll him/her. Call the Benefits Office, Ext. 2877 or Ext. 5126, if you have any questions.

*Nanoscience Safety from pg. 1*  
improving nanoscience safety. In addition, the five DOE Nanoscale Science Research Centers across the nation collaborate on safety issues and have been recognized worldwide as leaders in nanosafety.  
At any given time, about 30 experiments involving nanoparticles are being conducted at BNL. Each proposed experiment is evaluated for safety by the Experimental Safety Review Committee to be sure it meets BNL’s safety standards. The committee consists of ES&H coordinators, environmental compliance representatives, safety and health representatives, and scientific staff. ES&H professionals then perform safety inspections on a regular basis.  
— Diane Greenberg

## ‘No One Could Understand My Pain’ — Teen Depression Screenings

by Nancy Losinno, Employee Assistance Program Manager



Roger Stoulenburgh 01271005

When we become parents, it has often jokingly been said, an owners’ manual should be included when we bring that newborn home from the hospital. Especially when our children pass the threshold into adolescence, we are often desperate for a roadmap through the rough terrain of adolescent territory. As an experienced family therapist and well-seasoned mother and not-so-evil stepmother, I will share some of my views with you in this article.

The challenges that face teens are a complex mix of the emotional, social, physical and academic. The central struggle of adolescence is: Who am I and what am I about? What are my values? What do I take from my parents’ value system and what do I discard?

On the social front, peers are very important and supersede the place once relegated to Mommy and Daddy. While teens still begrudgingly accept advice from a parent, they will be quick to let you know that thanks very much, they have it all covered.

Physically, adolescence is a time of tremendous growth: in height, sexual maturation, motor coordination, and endurance, all reflected in a tremendous appetite and need for sleep. Emotionally, adolescents can be refreshingly astute but are quick to catch their parents in what I call “The Lie of Adult Morality,” that is . . . do my parents practice what they preach?

Do they smoke cigarettes, take drugs, drink and drive, while forbidding me to do the same?

All these converging forces can make a teen less than attractive to “hang with” at times. Mood swings, negativity, and lethargy can make parents believe that they do not know the person inhabiting their once lovable child’s body.

As you commiserate over this situation with parents of other teens, these negative emotional states may be minimized as a rite of passage, and not the true mood dysphoria that can precede further troubles. If this mix is combined with academic difficulties such as not attending school, behavior problems in school, or declining grades, you have the makings of a jump-start on alcohol/substance abuse, legal troubles, psychiatric admissions, etc. Especially if there is a family history of depression,

anxiety or alcoholism/substance abuse, parents need to be proactive early to prevent the intergenerational transmission of these patterns.

I believe that in these turbulent years, teens need to stay close to their parents’ “radar screen” so that parents can assess subtle changes, friendship patterns, school progress reports, and sleeping/eating habits. Don’t assume that because your teen never comes out of his or her room that he or she is happy in isolation. Go in and check on them, ask them to hang out with the rest of the family. Hormonal fluctuations in adolescence have a heavy hand in producing mood changes. Who can pinpoint when a depression began? Mild depressions may self-resolve, but continued episodes of mood swings, tearfulness, and “melting down” should be addressed before they morph into more intractable problems. For these reasons, the U.S. Department of Health and Human Services’ 2009 AHRQ Task Force recommended routine depression screenings for teens of 12-18 years, since they found the prevalence rate to be hovering around 20 percent.

EAP’s “Family Connections,” series (see notice below) addresses the challenges of family life. Teen depression screenings may be scheduled May 5-June 16. Call Nancy Losinno, Ext. 4567, to arrange an appointment.

## Have You Checked The Guide?

*The Guide to Brookhaven National Laboratory* is a helpful resource with answers to many logistical questions you might have. *The Guide* can help you understand ID requirements for guests and visitors, get something notarized on site, and find local movie theaters, farm stands, and other fun places in the area. Check out *The Guide* online: <http://www.bnl.gov/visitorinfo/>.

## BNL’s EAP Focuses on ‘Family Connections’ ‘Crucial Conversations With Your Teen,’ 5/4

The Employee Assistance Program (EAP) is presenting a four-part lunchtime series on “Family Connections” (go to: [www.bnl.gov/HR/oc-cmed/EAP](http://www.bnl.gov/HR/oc-cmed/EAP) for details) addressing the challenges of family life. On Monday, May 4, at noon, EAP Manager Nancy Losinno will talk on “Crucial Conversations With Your Teen,” in Berkner Hall, Room B. Topics will include proms, graduation and alcohol, teen driving contracts, peer pressure, Internet behavior, self-cutting, and staying connected. All the Lab community is welcome. (See also related article above.)



Roger Stoulenburgh 02A40704

## Summer Science Explorations At BNL’s Science Learning Center

BNL employees are invited to register their children for the 2009 Summer Science Explorations Program, which is a free offering from the Science Learning Center in the Lab’s Office of Educational Programs. The three-day summer camp will be held from 8:30 to 11:30 a.m. for students entering 4th – 6th grades.

The focus of the camp is astronomy. Through various games and activities, students will explore our solar system and the Sun’s energy. The environmental day will focus on life cycles of frogs and dragonflies. These programs center on

research done at BNL. In addition to our Science Educators, teaching participants include research staff and pre-service teacher interns.  
The weeks of June 29 (Monday through Wednesday) and August 3 (Tuesday through Thursday) have been reserved for the children of the BNL community. Space is limited, so register your child/grandchild early by contacting the Science Learning Center Office located in Bldg. 400, Ext. 4495. Students must attend all three days; parents of participating children are welcome to attend.

## CALENDAR

### — THIS WEEKEND —

#### Saturday, 5/2

**Cafeteria Closed**  
7:30 a.m.-2 p.m. Brookhaven Center. Continental breakfast and cold lunchtime sandwiches will be served today at the Center while the Cafeteria is closed for BNL’s Elementary School Science Fair being held in Berkner Hall.

### — WEEK OF 5/4 —

#### Monday, 5/4

**\*Talk: ‘Conversation With Your Teen’**  
Noon. Berkner Hall, Room B. Nancy Losinno, Employee Assistant Program Manager, will talk on “Crucial Conversations With Your Teen.” All the Lab community is welcome. See notices at left.

#### Wednesday, 5/6

**\*BSA Noon Recital**  
Noon. Berkner Hall. ETA3, a classical trio playing the piano, flute, and clarinet, will give a concert. Sponsored by BSA, the managers of BNL, noon recitals are free and open to the public. Visitors to the Lab of 16 and over must carry a photo ID. See pg. 4.

**Fitness Walk**  
Noon. Berkner Hall parking lot at Cornell and John’s Hopkins. Join in a “Spring Awakening Fitness Walk” organized as part of the Health Promotion Program. Questions? Contact Michael Thorn, Ext. 8612 or [mthorn@bnl.gov](mailto:mthorn@bnl.gov)

**450th Brookhaven Lecture**  
4 p.m. Berkner Hall. Nicholas Samios, Director of the RIKEN BNL Research Center and former BNL Director, will talk on “Personal Reflections on the Interaction of Science and Government and Possible Lessons for the Present Crisis.” All are welcome to this free lecture, open to the public. Refreshments will be offered before and after the talk. Visitors to the Lab of 16 and over must carry a photo ID. See pg. 1.

## Arrivals & Departures

### — Arrivals —

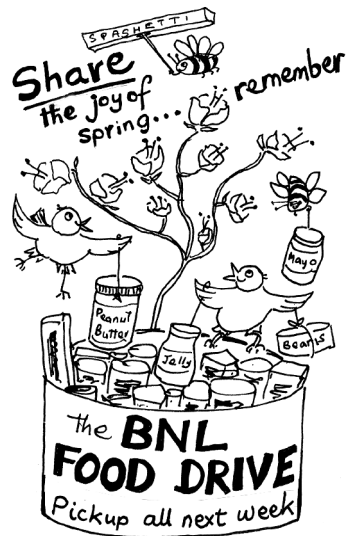
Thomas Brooksbank ...Maint. & Fab.  
Kim Kisslinger .....CFN  
Swagato Mukherjee .....Physics  
Jade Ann Patterson .....Dir. Office

### — Departures —

None

## Skin Cancer Screening

Lawrence Lieblich, Board-certified dermatologist, will perform full-body examinations to screen BNLeers for skin cancer on Thursday, June 25, 9 a.m.-noon in the Occupational Medicine Clinic. To obtain an appointment, contact Michael Thorn, Health Promotion Coordinator, Ext. 8612, or [mthorn@bnl.gov](mailto:mthorn@bnl.gov).



Many people in Brookhaven Town need food. Please leave canned goods in the Food Drive bins around site — for example, in Bldg. 400 and near the U.S. Mail Room in Bldg. 179.



## Classified Advertisements

OPEN RECRUITMENT – Opportunities for Lab employees and outside candidates.

POSTDOCTORAL RESEARCH ASSOCIATE – Requires a Ph.D. in physics or a related field and must be able to travel. Will support the hardware implementation of electron lenses in RHIC, to be used as head-on beam-beam compensators. Must be capable of designing electro-optical components and magnet elements for a low energy electron beam and should be able to set the design parameters based on primary requirements of the electron beam. Needs to be familiar with a computer design program like AutoCAD and basic vacuum technology. Familiarity with ray-tracing codes is also desirable. Under the direction of W. Fischer, Collider-Accelerator Department. When applying for a position, please add your references' contact and email address in the Reference box located on the application page. Please note that if you have applied for multiple positions under one application, the same reference information is attached to all those positions. If you elect to use different referees for different positions, apply to each position separately. BNL policy states that Research Associate appointments may be made to those who have received their doctoral degrees within the past five years. Apply to Job ID #14848.

ASSISTANT PHYSICIST – Requires a Ph.D. in physics, electrical engineering, optics or physical chemistry. Postdoctoral experience is preferred. Should have hands-on experience with nanosecond to femtosecond pulse length laser system operating in the kHz to 100's to MHz region. Experience with temporal and spatial pulse shaping is also required. Experience in the development of Ti:Sapphire and fiber laser system highly desirable. Knowledge of commonly used electro-optical components is required, as is the knowledge of techniques such as q-switching, modelocking, and harmonic generation. The research program is the development of short pulse lasers, including pulse shaping. The laser will be used in a polarized electron source for the proposed electron collider with the RHIC beams. Under the direction of I. Ben-Zvi, Collider-Accelerator Department. When applying for a position, please add your references' contact and email address in the Reference box located on the application page. Please note that if you have applied for multiple positions under one application, the same reference information is attached to all those positions. If you elect to use different referees for different positions, apply to each position separately. Apply to Job ID #14849.

MANAGER, LABOR RELATIONS (M-1) – Requires BS degree in Human Resources Management, Labor or Industrial Relations or related field with a minimum of 15 years' directly related experience. Law degree is preferred but not required. Ability to set and manage multiple priorities; strong organizational and communication skills. Ability to interface effectively with senior management and employees, mentor and develop employees. Aptitude in complex business problem solving. In depth knowledge of National Labor Relations Act, and the Davis Bacon Act, FLSA, FMLA, ADA and wage and hour law. Demonstrated experience in collective bargaining negotiations that include: chief spokesperson, contract language drafting, bargaining strategy planning and execution. Also requires dispute resolution experience. Provides leadership and management for Labor Relations functions and services to BNL organizations with represented employees. Sets mission, vision, and strategy for the Labor Relations programs ensuring organizational alignment with BNL mission, vision and strategy. Develops and executes Laboratory's collective bargaining strategy in pursuit of the Laboratory's strategic objectives. Responsible for the negotiations and maintenance of BNL's three collective bargaining agreements. Serves as Laboratory's lead spokesperson and negotiator in collective bargaining agreement negotiations and on major labor relations initiatives and as Laboratory representative in union grievance and arbitration procedures. Provides counsel, guidance and professional support to the Laboratory Director and Associate Lab Directors on matters pertaining to Labor Relations. Maintains strategic relationship with DOE Brookhaven area office, and local Congressional delegation. Human Resources & Occupational Medicine Division. Apply to Job ID #14847.

ELECTRICAL POWER ENGINEER (P-7 / P-9) – Requires a BS and a minimum of seven years of electrical power engineering experience in the design, operation, and maintenance of heavy industrial areas. Experience with electrical distribution systems and electrical equipment involving voltages from 120V up to 13.8 kV is required. Should be familiar with the application of distribution transformers, circuit protection devices, motor control centers, power circuit breakers, protective relays, variable frequency drives, uninterruptible power systems, motors and diesel generators, automatic transfer switches, wiring systems, and cable trays. Should be experienced in the incorporation of the National Electric Code and NFPA 70E. Requires good com-

munication skills to interface with scientific and engineering staff and to work with and direct technical staff and craft workers. The ability to use Auto-Cad and Electrical Engineering analysis software including SKM System Analysis Power Tools is a plus. Responsibilities will include overall power system engineering including short circuit analysis, arc flash hazard analysis and protection coordination, detailed design, preparation of equipment specifications, project engineering support and guidance during installation of new equipment and upgrade of existing equipment, inrush currents and voltage dips measurements and troubleshooting support during operations. The Electrical Power Distribution Group is responsible for operation, upgrade, and installation of new electrical distribution systems for the Relativistic Heavy Ion Collider (RHIC) complex of particle accelerators and experimental areas. Collider-Accelerator Department. ERAP ELIGIBLE \$1,000. Apply to Job ID # 14850.

SURVEY & ALIGNMENT / PROJECT ENGINEER II/ MECHANICAL (P-7) (REPOSTING) – Requires a Bachelor's degree in Geodetic or Survey Engineering or equivalent with a minimum of eight years' experience doing survey/geodetic adjustments of three – dimensional networks or an equivalent combination of education and experience. Work experience in a light source or accelerator facility and C++ is desirable. Must have excellent computer skills including computer-aided design, survey, and data analysis programs. Excellent written and verbal communication skills are required to direct the efforts of laboratory technical personnel and to interact with scientific and engineering staff. Must be able to analyze, adjust, and integrate data from survey instrumentation including total station instruments, laser trackers, mekometers, optical tooling, and other survey and alignment equipment. Responsibilities include reviewing and updating the proposed primary and secondary survey networks, perform error analyses and develop procedures and databases for the survey teams. Will participate in the survey and alignment effort for the NSLS-II facility. National Synchrotron Light Source II. ERAP ELIGIBLE \$1,000. Apply to Job ID #14822.

### Motor Vehicles & Supplies

08 WES TRAILER – brand new, never used, 7 x 10, black diamond plate, side dr, back ramp, \$3,500. 834-6637.  
05 CHRYSLER 300 TOURING – 82K mi. Black Pearl, Mint; 6 cyl. \$9,500 neg. Jared, Ext. 4705, 929-4978, mjulian@bnl.gov.  
03 DODGE GRAND CARAVAN EX – 84.5K mi. pwr. drs, 3.8, lther, rem. start, grt shape, below bk price. \$6,500 neg. 678-6544.  
02 FORD WINDSTAR – 105K mi. p/w, p/l, a/c, dual sliding drs, excel., cln int, seats 7. \$4,200 neg. Joseph, Ext. 2350, 987-4281.  
99 KAWI VULCAN CLASSIC – two-tone, windshield, saddle-bags, runs well, recent tune-up, must sell. \$3,500 neg. 834-6637.  
99 SATURN SL2 – 61K mi. 4 cyl, a/t, a/c, 4dr, well maint, slight damage on ext, manual. \$2,000 neg. 473-2721 or krishna@bnl.gov.  
99 NISSAN ALTIMA SE – 76K mi. a/c, c/c, p/w, 4spd, gd. cond. \$4,400 neg. Brad, Ext. 4369, 680-6127.  
94 DODGE RAM XLT – 154 mi. 8cyl, a/t, a/c, p/l, p/w, cd, org. owner, bedliner, cap, price reduced. \$2,500 neg. 924-7476.  
83 VIKING LI&#039;L GASSER – Camping trailer; awning, slps 6. Less than 1000#, no added brakes nec. \$550 neg. Ext. 2788.  
TIRES, 4 – P215/55R16 Michelin gxt4(3) slight usd, (1) Cntinentl nr new alum alloy rms \$25ea/neg. Ext. 2155, gdanowski@bnl.gov.

### Boats & Marine Supplies

23' PEARSON P23 – 79 sloop, slps 4, fgls hull & head liners, lights, 3 sails, galley, sep. head, 4' lead fin keel. \$2,400. Ext. 2788.  
21' SEASWIRL STRIPER – 270HP Volvo I/O, chart plotter, fish/depth finder, v low hrs, excel cond. \$22,000neg. 987-4281.  
BOAT SLIP – Jamesport, Peconic Bay, deep water, floating dock, boats up to 25', prkg at dock, no util, \$950/obo. Ext. 2906, 929-6189.  
FG DINGY – 7' fiberglass Dingy w/oars and oar locks, great cond., \$150. Ron, Ext. 3987, 744-5285 or rongill@bnl.gov.

### Audio, Video & Computers

APPLE MACBOOK PRO – \$900 – \$900, Core 2.0 Duo 1gb ram 667 FS 80gb hd, more, Jesse, Ext. 2122, jmontalto@bnl.gov.  
DRUM MACHINE – classic, Roland R-5, w/pwr supply & manual, \$100. Ext. 3621.  
MAC COMPUTER – IMAC G# 400 MHz,wifi, MS Office, more \$250 OBO. Don, Ext. 2253, 821-3320.  
MAMIYA 645 AFD CAMERA – med. format w/45, 55, & 105-210 zoom lenses, much more, \$1,550. Ext. 3501, gwelch@bnl.gov.  
PANASONIC DVDDIGIT. PALMCDORDER – SD mem card, 120 min rcrding time, batt, more, batt/charger, \$60/obo. 516-241-4598.  
ROCKBAND 2 - XBOX360 – incl everything, guitar cont, mic, drums, game, etc. ask/\$150. 443-799-2571 or wjackson@bnl.gov.  
SPACE NAVIGATOR – 3DCONNEXION for 3D mdeling software, VR, Google Earth. For PC & MacOSX. new in box, \$50. Ext. 4575.  
WINDOWS XP – OEM System Builder version, SP3, \$100. Steve, Ext. 4211, 286-3681 or musolino@bnl.gov.

### Furnishings & Appliances

DRESSER – solid oak, two-over-two drawers, 42wx19dx35h, \$150. 878-9020.

MATTRESS/SPLIT BOX SPRINGS - Brand-new Sleepy's Miralux pillow-top. Pd. \$1800, ask \$1000. Can arrange delivery. 764-8001.  
SOFA/WINE TABLE – glass top w/wine storage at bottom, \$25. Ext. 3008 or ddaniels@bnl.gov.

### Sports, Hobbies & Pets

QUAD/YAMAHA RAPTOR – 700R 5 spd, low hrs, excl. cond ask/\$6,000. Rich, Ext. 4520 or doulous@bnl.gov.  
GOLF BALLS – buy used in bulk, \$10/100, gd used cond., no broken/range balls. Ext. 7443 or porqueddu@bnl.gov.  
PET FOUNTAIN FILTERS – for Petmate water fountain. Five filters, \$5 for all. Stephen, Ext. 4475 or plate@bnl.gov.  
ROGER CLEMENS SIGNED BALL – authenticated TRISTAR game. See http://tinyurl.com/cwu8wy. Jesse, Ext. 2122.  
WETSUIT – youth size 12, like new, pd/\$100, ask/\$55. Lynda, Ext. 7235, 286-1018 or fitz@bnl.gov.

### Tools, House & Garden

IN-GROUND POOL LADDER – brand new, stainless, 3 rungs, incl. base, ask/\$100. Richard, Ext. 4520 or doulous@bnl.gov.  
LAWN MOWER – Craftsman self-prop walk-behind, 1 rear wheel locks if pulled backwards, \$75. Honda HR-215 w/aluminum deck, works well but hole in side of deck Ron, Ext. 3987, 744-5285.  
LAWN MOWER ENGINE – 5 hp Briggs & Stratton Quantum XM for rotary lawnmower, \$25. 878-9384, mdrowe@optonline.net.  
SHED – Shed. 8x8,2x4 construction, floor, 4' doors, T111 siding. on treated 4x4. \$850. George, Ext. 3868, 878-1178.

### Miscellaneous

1996 SUNLINE TRAILER – 24', 5 new tires/mattress, elec. jack, many extras, all incl., sleeps 4, \$5500/obo. 924-5187.  
GIFT CERTIFS – \$50 Hazy Moon, Ptchge; \$50 Q Restau East, Qugue, (2) \$25 Momento's, Hmptn Bays, all @ 50% off. Ext. 4138.  
MEDIFAST PACKAGES – variety of products, approx. 3 wk supply, ask/\$20. Ext. 4532.  
MOVIE TICKETS – To Island 16, expire 6/30/2009. \$6 each, 7 available. Ext. 4138.  
PORTABLE DOG PEN – Galvanized chain 10x10 6'h,\$225. Jeff, 806-6001.  
SPRINKLERS – polypipe, also complete systems installed, repair, spring startups. Michael, Ext. 5262, 284-2277.  
VIDEO CHAIR – new, \$20. Ext. 3008 or ddaniels@bnl.gov.

### Happenings

DINNER/SHOW OUTING – Christmas Nov 14 at Millennium Theatre & dinner at Millers in Strsburg, PA. DEPOSITS of \$60pp due by Jun 1. Kim, Ext. 7465, 399-3098.  
FALUNDAFA EXERCISES DEMO – 5/9, 12-6pm Wang center, SB Univ, apa heritage month, free to learn falundafa exercises. George, Ext. 4033.  
GENERAL ELECTRIC LV SWGR – Visit GE trailer loaded w/low voltage swgr products. Berkner Hall pkg lot, 5/11, 9-2pm. Swapna, Ext. 5279.  
THEME BASKET AUCTION – St. Andrew's Episc Church 9th Annual Auction, E. Main Street, Yaphank, Sat, 5/2, doors open @ 12:30 pm, Admissn, \$5. 281-8529.  
YVETTE SINGS, BOB PLAYS – May 9, 8-11PM, Yvette sings Bossa Nova, Spanish, Jazz, Bob plays guitar/keyboard. Food/Margaritas. Don Quijote Restaurant Rt. 25A, Miller Place. Yvette, Ext. 5591.

### Free

CELTIC/NEW AGE CDS – The Baltimore Consort, Clannad, Altan, Michael Hedges. Sandy, fosters@bnl.gov.  
CRT COMPUTER MONITORS – 3 avail., 15"-19", all works. Richard, Ext. 3932.  
POOL TABLE – excel cond, must be able to remove from premises. 591-1054.  
TODDLER GIRL CLOTHING – used, beautiful, for all seasons, sizes 12 mos-4T, pick up in my office at BNL. Ext. 4532.

### Yard & Garage Sales

BROOKHAVEN – Shabby Chic/beach cottage housewares, 2964 Montauk Hwy. http://tinyurl.com/dkd3dd Sat-Sun, 5/9 & 10. Sandy, fosters@bnl.gov.

### Wanted

ADOPT-A-PLATOON – Monetary donations gratefully accepted towards mailing shipments to military overseas. Thanks. Joanne, Ext. 8481 or jrula@bnl.gov.  
DIRT BIKE – 125cc to 250cc Dirt bike/motocross, any make, running or not. I can pick up. Richard, Ext. 7443 or porqueddu@bnl.gov.  
EUROS – market value pd. to exchange your Euros. Ext. 8035 or blettieri@bnl.gov.  
SPONSORS – For participation in 5-mile "Families Walk for Hope" Sat, 5/2. No donation too small; for more details, contact: Barbara, Ext. 2098 or royce@bnl.gov.

### In Appreciation

It's been a wonderful 35 (almost) years at BNL. Thanks to all my friends and foes for making it interesting. See you around.  
— John Usher

### Where's the Real Estate?

Lack of space forces us to omit the Real Estate rentals and sales. They are available from this week's pdf version on the web at <http://www.bnl.gov/bnlweb/pubaf/bulletin/default.asp>. Or, send email to [bulletin@bnl.gov](mailto:bulletin@bnl.gov) or call Ext. 2346.



### BSA Noon Recital, 5/6

### ETA3 Classical Trio Plays Flute, Piano, Clarinet

ETA3, a classical trio comprising: (from left, above) pianist Tomoko Nakayama, clarinetist Alexey Gorokholinsky, and flutist Emily Thomas, will perform at the BSA Noon Recital on Wednesday, May 6, in Berkner Hall. The Trio ETA3, which was formed at the Juilliard School during spring 2006, is named after a luminous and spectacular star-forming Nebula in Earth's galaxy and also initializes the first letter of each musician's first name. The Trio was recognized by Juilliard as one of three prominent emerging chamber music groups of 2006, which led to the group's Alice Tully Hall debut. Sponsored by BSA, the managers of BNL, noon recitals are free and open to the public. Visitors to the Lab of 16 and over must carry a photo ID.

### Join the Green Thumb Veggie Club! Get fresh organic veggies all summer long

Fresh organic produce from a local farm is available, delivered weekly to BNL, for those who join the Community Supported Agriculture (CSA). Members receive fresh organic produce from the Green Thumb Organic Farm in Water Mill, where the Halsey family has been farming their land since 1644. The Halseys grow over 350 varieties of fruits and vegetables, picked daily for delivery.

If you join, each week, for 26 weeks, a selection of freshly picked organic produce will be delivered to BNL for you to pick up. The selection is based upon whatever is in season. The fee for a season of produce is \$420, which may be paid immediately or in two installments of \$285 on sign-up, by May 31, with one post-dated check for \$135, post-dated for July 13, 2009. The first delivery is in early June, continuing through November. For more information, including a list of the fruits, herbs, and veggies that the Halseys grow, or to join CSA, pick up a brochure containing the commitment form from the BERA Store in Berkner Hall, or download the same brochure from the BERA website on the homepage, [http://www.bnl.gov/bera/linkable\\_files/VeggieApplication.pdf](http://www.bnl.gov/bera/linkable_files/VeggieApplication.pdf) or contact Ruth Comas, [comas@bnl.gov](mailto:comas@bnl.gov) or Ext. 3545.

### Cafeteria Closed on 5/2

To accommodate BNL's Annual Elementary School Science Fair, Berkner Hall Cafeteria will be closed on Saturday, May 2. The Center Club in the Brookhaven Center, Building 30, will be open 7:30 a.m.-2 p.m., with continental breakfast in the morning and cold sandwiches at lunchtime.

### Blues Musician, Storyteller Roy Book Binder, 5/15

Blues musician/storyteller/songwriter Roy Book Binder will perform on Friday, May 15, at 8 p.m. at the Brookhaven Center. Sponsored by the BNL Music Club, the concert is open to the public. Visitors to the Lab of 16 and older must bring a photo ID.

In the 1960s, Book Binder learned his craft from the legendary blind street singer Reverend Gary Davis. Later, he toured across America performing at the New Orleans JazzFest, the Chicago Blues Festival, and MerleFest, where he has hosted the acoustic blues stage for many years. A few years ago, the PBS Emmy Award-winning series "Arts Across America" joined him on the road, documenting his colorful career in a segment titled "Keeping Traditions Alive." Book Binder has been guitar picking, singing country blues, and telling stories behind the microphone for more than 40 years, but in his most recently produced albums he returns home to the



root of folk and blues by using traditional melodies.

Tickets cost \$15 in advance at the BERA Store in Berkner Hall or through [www.ticketweb.com](http://www.ticketweb.com), or \$20 at the door. For more information on Roy Book Binder go to: <http://www.roybookbinder.com/>, <http://www.bnl.gov/bera/activities/music>.

— Jane Koropsak



## Classified ads omitted from the Bulletin of May 1, 2009

### For Rent

**BELLPORT VILLAGE** – Mthr/Dgtht house w/2 kit., 2 baths, 3 bdms, part fin. bsmt w/2 more rms, cac, incl. all, no smkg/pets. \$2,800/mo. 835-5681 or jfortunato@bnl.gov.

**MASTIC** – Share lg 2bdm house 5mi. to BNL. All utils incl. No smkg. Nr shopping. \$700/mo. Sayan, Ext. 3725, 401-218-2344 or sayangupta@gmail.com.

**MASTIC BEACH** – 1 bdrm apt, full bath, l/r, kit., priv. ent. & drway, no smkg/pets, all incl. except cable, sec/refs req'd. \$950/mo. 281-4559.

**MEDFORD** – 1 bdrm bsmt. apt., bright/clean, eik, full bath, priv. ent, no smkg/pets, incl. utils. \$900/mo. 758-3723.

**MILLER PLACE** – studio apt., incl. all util, sep ent, 9 mi from BNL; furn. possible, call Anna after 8pm. \$700/mo. 928-0777.

**PORT JEFFERSON ST.** – 3 bdrm, 1 bath, l/r,d/r,gas heat, lge yard, lawn serv incld, v. clean, new applis, 2car gar, quiet, no smkg, \$1,600/mo. Milind, Ext. 3327, 830-5762.

**ROCKY POINT** – 2 bdrm apt, 1 sm. bdrm/of-fice/spare, l/r, w/w carpet, kit., brkfst nook, bath w/tub, , fen pvc side yd. w/patio, walk to shores/beaches. \$1,300/mo. 473-1564.

**ROCKY POINT** – 1 bdrm upper unit, kitch, 1 bath, l/r rm, balc. Co-op. Nr stores. Lndry Rm on prem, own prkg. No smkg/pets, CAC, incl. gas & water. \$1,150/mo. 806-5965.

**ROCKY POINT** – 1 bdrm house, 1/2 basement, oil heat, no smkg/pets. \$1,100/mo. 744-8919.

**SHIRLEY** – 1rm studio, furn, stove, kitnet, full bath,sep ent,cable/elect/int/incl, 1mo. sec, 5min to store/beach/LIRR/, no smkg/pets. \$650/mo. Ext. 2964, 804-8609.

**SHOREHAM** – Share a house with professional. Part furn bdms, 7 mi to BNL, internet & tv incl., no smkg/pets, single pref. \$650/mo. 516-380-2650, or 744-3543.

**YAPHANK** – priv. home/ent., fully furn. studio for single person, 4 mi. to Lab. cable/int/util. incl. \$750/mo. 516-205-6712.

**YAPHANK** – 1 bdrm, lvg area, eik, full bath, no pets/smkg, all utils incl except phone. priv entr, 1 mo sec req. available June 1. \$1,200/mo. Matt, 816-6424.

**HAWLEY, PA** – Time Sh, 7/11-18/09, Poconos Tanglewood Resort, 2 bdrm, full kit, slps 6, resort amenities, golf, lake, www.tanglewoodresorts.com. \$700/wk. 672-414.

### For Sale

**AQUEBOGUE** – 3-lv condo 3,000 sq ft. priv. walk on beach, 3 1/2 bath, 2 kitch. lower patio & upper deck, cent. a/c & vac. jacuzzi, heated pool tennis, \$825,000 neg. Ext. 5101.

**BAYPORT S.** – lg 4+ bdrm, 3 bath 5-yr old home on cul de sac, 25 min to Lab, 5 min to bay, lg lvg & fam.rms, grt. kit., f/p, sunrm views deck,pond. \$745,000. 388-3046.

**BROOKHAVEN HAMLET** – 3bdrm, 2.5ba, 2car gar. waterfront prop. Col., 1 acre cul-de-sac, natural preserve, attchd office/ waiting rm, dock. \$585,000 neg. 286-4584.

**MANORVILLE** – Townhome, 2 bdrm, 2 bath, 2 car gar., gated comm., mint cond, end unit w/priv. loc, all amenities. \$324. 804-6262.

**MIDDLE ISLAND** – 4BR, 2.5 bath, spacious Victorian, built 2003, hdwd flrs, cherry kitch., stnless stl applis, fin. storage/hobby rm in bsmt, paved patio, \$389,000. Ext. 3621.

**MILLER PLACE** – 3 bed, 2 bath ranch, legal 1 bdrm/M/D apt, 1 bath, priv. ent, fin. bsmt., aprox. 290'x100', 24x30 deck, KOI pond. \$379,000 neg. 872-9268, lasalla@bnl.gov.

**PORT JEFF VILLAGE** – 2 bdrm, 2.5 bath T/hse in Highlands, eik, l/r w/gas f/p, cac, bsmt, w/d, 1.5-car gar., gym, pool, tennis/bstklb, walk to LIRR. \$319,000 neg. 516-903-3902.

**SHOREHAM** – 4 bdrm., 2.5 bath Col., frml l/r & d/r, den w/fp, fin. bsmt, 12x20 deck, igs, new granite counters, SWRSD, more, 7 mi to Lab. \$499,900. Ext. 2253, 821-3320.

**SHOREHAM** – Ranch, newly renov, 3 bdrm, bath, l/r, den, wd flrs, kit. granite counters, ss appli, gar, lg yd, family n'hood, SWRSD. \$350,000. 258-4607.

**SHOREHAM VILLAGE** – spotless custom 3-br, 3-bth ranch, rec. renovated, 1 acre borders pkland, wd flrs, pool, screened porch, igs. price reduced. \$499,900. 744-2404.

**WESTHAMPTON BEACH** – Turnkey mobile home, shed, deck, treed lot, 2 miles to Dune Rd. & ocean beaches, 1/2 hr. to BNL. \$45,000 neg. Marty, 874-3478.

### Services

Services are neither screened nor recommended by the Bulletin.

**35MM SLIDE SCANNING** – www.picture-perfectscans.com scans & color corrects 35mm slides,photos,negatives & converts them to DVD. DVD Music slide-shows available. Port Jeff. 928-6469.

**A+ SINGER WITH DUO** – Weddings, Events, Concerts: Yvette Sings Popular Songs with Bob on Piano/Guitar, Brian on Drums. Select Music for Occasion. Reasonably Priced. 516-680-4012.

**A1 LAWN IRRIGATION** – complete lawn sprinkler systems installed, repairs, start ups. quality work. Michael, 284-2277.

**BABYSITTING** – Responsible college grad is available to babysit your children in the evening and on weekends. Lots of experience with kids! References available. Emily, 516-662-5896.

**BABYSITTING** – 14 year old honors student, will babysit in your home, eve's and weekends. Reliable. Manorville and surrounding area. Amanda, 874-8631.

**BABYSITTING & PETSITTING** – Retired nurses aide will watch your children or pets while you are away. Donna, 398-8024.

**BOAT STORAGE** – Out/inside boat storage avail. @ CM yd., trailered boats welcome, summer boat slip avail. for 15' boat. 878-2577.

**BOUNCE HOUSES/INFLATABLES** – Summer Party?! We've got the best babysitter you can rent! Our bounce houses, Obstacle course, wet/dry slides keep kids entertained for hours!!! www.Llinflatables.com. Party Playgrounds, 681-7711.

**BRICKWORK** – Reset your existing walkway, pool area, or patio to look brand new. No job too small. BNL discount. Tony, 736-7942.

**BROOKHAVEN PSYCHOLOGY** – Psychotherapy & biofeedback. Stress, anxiety, depression, insomnia, PTSD, pain, parenting, ADHD, LD, neuropsychological assessment. 5 Min. from BNL. Ron Turner PhD, Lic. Clinical Psychologist, 504-6135 or haiyan@bnl.gov.

**CAR DETAILING SERVICE** – Great service, reasonable prices, call for info & appointment. Chris, 960-6243.

**CARPENTER/CONTRACTOR** – Expert home improvements. Specialize in kitchen remodeling, decks, ponds, tile work, no job too small or large, 20 yrs exper. references, Lic/insured. Ray, 654-1970.

**CHILD CARE** – Mature woman with 22 years experience will care for your child in my home in the Holbrook area. References upon request. Please call. Terry, 472-1193.

**CHILDCARE AVAILABLE** – Loving mother available to care for your child in my home or yours. Very qualified to work with children with disabilities and children of all ages. References available. Call for availability. Anna, Ext. 7414, 775-7350.

**CHIMNEY SWEEPS** – Fireplaces, wood, coal and oil flue systems. Stainless steel chimney caps, chase pan tops and liners. Michael, 821-5526.

**COMPUTER REPAIR** – PC Software/Hardware/Network repair, installation,

consultation. Certified and Experienced . Ryan (ITD-Deskside Support), 294-5797.

**COMPUTER SERVICES, ALL** – Home & business specialist. New system set ups, tune-ups, virus control, lessons from cert. business teacher. Plenty of references, reasonable rates. Jim, 821-2558.

**DECORATIVE GLASS** – Beautiful solutions for all decorative glass needs, front door, kitchen, bath, skylight, or odd-shaped windows all types of glass, custom designs. 338-5412.

**FLOORING: INSTALLS & REPAIRS** – Carpeting, Vinyl and Laminate. Quality sales and service. Over 20 years experience. John, 987-6479.

**GENEALOGY** – advice and research on family history and genealogy, 30 yrs experience. Jim, Ext. 2432, 821-9178 or jchiggins2@hotmail.com.

**HANDYMAN** – Need a Handyman? Call. Joe, 875-0584.

**HANDYMAN** – Dependable, On-Time, Expert Service with Attention to Detail. Excellent references. Discount for BNL employees, Veterans & Seniors. John. 365-4815.

**HANDYMAN** – licensed & insured, home remodeling, interior/exterior painting, tilework, woodwork, renovations, powerwashing and building decks etc. Work done w/TLC. Bill, 281-4492.

**HANDYMAN/CARPENTER/HOME IMPROV** – lg/sm, dropceilings, tree/club houses, countertops, sinks, faucets, vanities, drywall, patches, painting, furniture, fencing, cleanups, electrical, plumbing, \$125-\$175/. Rich, 255-3550.

**HOME IMPROVEMENT** – All types of repairs, roofing, siding, baths, kitchens, window replacement, decks. Licensed, insured, reliable. Brian, 399-0445.

**HOME IMPROVEMENTS** – Meticulous. If your home needs work or repairs, large or small, call Anthony. Lic./insured. Anthony, 312-2670.

**HOME IMPROVEMENTS** – Your home care co. All phases of home improvements.roofing, siding,bath,kitchen,decks & more. Call for any questions. Lic&Ins. George, 878-1178.

**HOMEMADE CAKES BY DEBBIE** – All occasions, All shapes, Tiered or not. No fondant. Fillings upon request. Have references and pictures. Reasonable. Debbie, 776-0188 or djdg00@optonline.net.

**HYPNOTIST** – can help you make positive changes in your life; stop smoking, reduce stress, conquer fear, improve athletic performance. 474-3535.

**IN HOME COMPUTER SERVICE** – Fast and Friendly Local Computer Service available with great rates. Don't wait days or weeks to have your PC issues fixed. Off hours/weekends available. Visit www.ECSLI.com Visit www.ECSLI.com. Expert Computer Solutions, 516-639-5152.

**MASONRY** – Looking for an upgrade to your home/property? We specialize in brick paving driveways, cobblestone curbing, walkways, aprons, patios, blue-stone Plus. Licensed/Insured. Matt Ficeto, 478-7754 or ficetosmasonry@yahoo.com.

**PAINTER** – Interior and exterior painter,

powerwashing, spackling etc. Very conscientious, neat and finished work looks like a piece of art done with TLC. Mike, 291-5026.

**PERSONAL FITNESS TRAINER** – OUR MISSION : to deliver the most effective,convenient and affordable fitness concepts to long island businesses and homes we come to you. www.enter-thebunker.com. bill, 456-2653.

**PHOTOGRAPHY** – Fortunato Photography: weddings, children's portraits, photo restoration, color and/or black and white, Fortunato35@yahoo.com for info. Trisha, 258-3699.

**PIANO LESSONS** – Classical, All Levels, NYSSMA preparation, in Shoreham. 744-9763.

**PORTRAITS** – LI Artist working from photos will create wonderful portraits for you of your loved ones - family, friends, pets, cars, motorcycles ... 764-3211.

**POWERWASHING** – "AT YOUR SERVICE"-Home exteriors, decks, patios, boats, RVs. Excellent References. BNL employee, Veteran & Senior Discounts. John. 365-4815.

**REAL ESTATE** – Tired of the Commute? Need a new start? We have many opportunities available whether you are in the market to buy or rent, Let us at Coldwell Banker help you find "Home". Sharon, 902-9990.

**TAX PREPARATION** – Full accounting and tax services for business and individuals. Personalized service at affordable rates. My office or your home. Tommasa Rosini, CPA, 886-1545.

**TAXES** – Prepared by Tax Consultant. Servicing lab personnel for over 30 years. Reasonable. John, 732-2472.

**TREE REMOVAL, GRINDING & FILL** – Any yard work, Winter Clean Up, Stump Grinding, Top Soil, Fill, Flower Beds built, Storm Damage.Small Jobs OK. Dave, 774-3736.

**TUTOR** – Experienced chemistry teacher for Regents, AP or College Freshman courses. Stony Brook. 219-7494.

**TUTOR** – Physics and Mathematics. College or High School levels. Stony Brook. 626-7645.

**TUTOR READING/ WRITING** – Now accepting new students! Master Level teacher available for private sessions with your child (grades k- 12). Very competitive rates. Excellent references available upon request. Jennifer, 395-0984.

**TUTORING** – Honors college grad will tutor your children in science and elem/ middle school math. Transcript and references available upon request. Emily, 516-662-5896.

**WALL MURALS** – Custom Wall Murals, trompe l'oeil, faux finishes, residential and commercial, by Artist with over 30 years experience. References available. 764-3211.

**WATCH BATTERIES** – Drop off at lunch, next day return. Starting at \$8. Lithium higher. No Swiss Army. 503-1377.

**WINDOW CLEANING** – Call me for sparkling window cleaning. Free estimates, mention BNL for your discount. You will not be disappointed. . John, 291-2407.