

BSA Distinguished Lecture, 3/2

Economist Robert J. Shiller: How Human Psychology Drives the Economy

Robert J. Shiller, an economics professor and fellow at Yale's International School of Finance, will give a BSA Distinguished Lecture, titled "Animal Spirits: How Human Psychology Drives the Economy, and Why It Matters for Global Capitalism," on Tuesday, March 2, at 4 p.m. in Berkner Hall. BSA Distinguished Lectures are sponsored by Brookhaven Science Associates, the company that manages BNL, to bring topics of general interest before the Lab community and the public. The lecture is free and open to the public. Visitors to the Lab age 16 and over must bring a photo ID.



Photo: Michael Marsland, Yale University

In his lecture, Shiller will discuss the premise of his 2009 book, coauthored with the Nobel Prize-winning economist George A. Akerlof. Winner of the getAbstract International Book Award and the 2009 TIAA-CREF Paul A. Samuelson Award for Outstanding Scholarly Writing on Lifelong Financial Security, the book, which has the same title as Shiller's lecture, discusses how "animal spirits," or human emotions such as confidence, fear, and a concern for fairness, drive financial events, including today's global financial crisis.

John Maynard Keynes coined the phrase "animal spirits" to describe the changing psy-

chology that led to the Great Depression and the recovery from it. Like Keynes, Shiller and Akerlof believe that government intervention is necessary to overcome the adverse effects on the economy brought about by unruly and irrational human emotions. In his talk, Shiller will explain how "animal spirits" lead to adverse economic effects, and he will outline his insights on how the global economy can recover from its recent setbacks.

Shiller earned a B.A. from the University of Michigan in 1967 and a Ph.D. in economics from the Massachusetts Institute of Technology in 1972. A member of Yale University's faculty since 1982, Shiller is currently...
See Shiller on pg. 2

Newly Patented Method Enhances Crystal Growth Could Improve Superconductors, Optical Drives, Microelectronics

Vyacheslav Solovyov and Harold Wiesmann, scientists in BNL's Condensed Matter Physics & Materials Science Department, have developed a method to control the buildup of hydrogen fluoride gas during the growth of precision crystals needed for applications such as superconductors, optical devices, and microelectronics. The invention — recently awarded U.S. Patent No. 7,622,426 — could lead to more efficient production and improved performance of these materials. The research was funded by DOE's Office of Electricity Delivery & Energy Reliability.

Materials with highly ordered crystalline atomic structures have enormous potential for energy-saving devices such as superconductors, which carry current with no energy loss, and high-speed electronics. Such crystals are typically grown from precursors deposited on substrates — for example: tapes, wires, or wafers, such as those used in the production of computer chips.

Adding fluorine to the precursors enhances the transfer of crystalline order from the substrate to the growing mate-



Roger Stoutenburgh 04051209

From left, Vyacheslav Solovyov and Harold "Bud" Wiesmann

rial. But fluorine also presents a problem because it leads to the buildup of hydrogen fluoride gas. Hydrogen fluoride (HF) slows down the reaction that converts the precursor to the desired material, sometimes even stopping crystal growth in its tracks.

"You might think you could just vent the accumulating gas, but such methods have proven impractical," said Wiesmann. "For one thing, you'd have to remove the gas uniformly, to avoid variations in pressure that might affect crystal growth, which becomes more difficult over larger areas.

Also, other gases necessary to crystal growth, such as oxygen and water vapor, get extracted along with the HF, and re-injecting these gases introduces more pressure problems."

"We've developed an improved method for removing HF, based on absorption, that enhances the production of high-quality crystalline products," Wiesmann said.

A wide range of materials from alkaline earth oxides to materials containing calcium, sodium, or even activated carbon can be used as HF absorbers.

See New Patent on pg. 2

455th Brookhaven Lecture, 2/17

Vadim Ptitsyn To Talk on Challenges In Accelerating, Colliding Polarized Beams

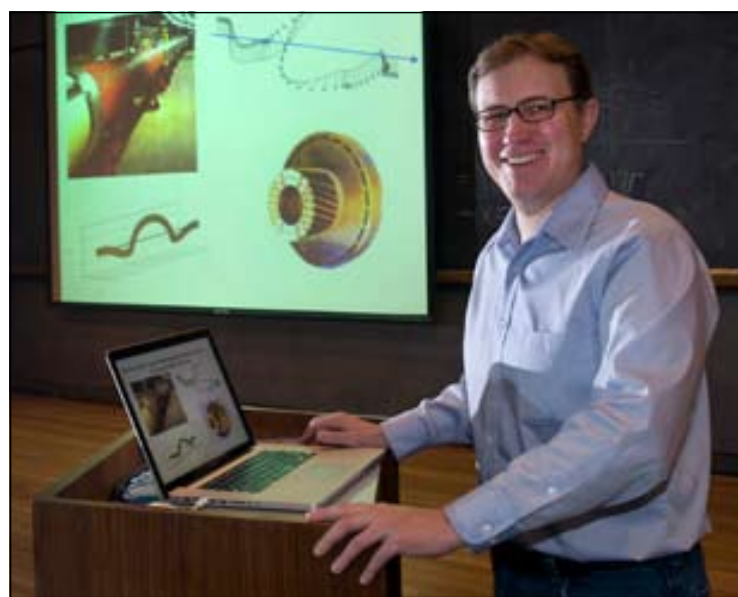
At the Relativistic Heavy Ion Collider (RHIC), scientists are investigating not only the primordial properties of the universe but also another fundamental question of particle physics: the property of "spin." A particle's spin comes from its intrinsic angular momentum and is a basic property such as charge or mass.

Many existing and future high energy and nuclear physics experiments rely on accessing spin. These experiments require using beams of polarized particles, which have their spins all pointing in one direction. When used as a probe of matter, beams of polarized particles reveal details of fundamental interactions not accessible with unpolarized particles.

Experiments using polarized beams also need accelerators capable of accelerating and colliding such beams while preserving polarization. Achieving this, as in so many extraordinary feats that make science discoveries possible, is easier said than done.

To learn about "Challenges in Accelerating and Colliding Polarized Beams," join physicist Vadim Ptitsyn of the Collider Accelerator Department when he gives the 455th Brookhaven Lecture at 4 p.m. on Wednesday, February 17, in Berkner Hall. Refreshments will be offered before and after the lecture, which is free and open to the public. Visitors to the Lab of 16 and over must carry a photo ID.

Ptitsyn will base his talk on his experience with polarized



Roger Stoutenburgh 01160910

beams in several electron and proton accelerators as well as in developing plans for a future polarized beam electron-ion collider at RHIC. He will describe some of the depolarizing effects that originate from intrinsic particle motion in accelerators as well as from various machine errors. Particles such as electrons or positrons, which have light mass, present another important factor, synchrotron radiation, which at the same time provides a mechanism for self-polarization of the particle beam and yet introduces strong depolarizing effects.

As Ptitsyn will explain, various techniques and dedicated devices are used to overcome these challenges. These include "Siberian Snakes," which are a specialized set of magnets

that keep particle spins aligned during their acceleration. The snakes have found their applications in both proton and electron machines. The design of these devices to use in RHIC was suggested by Ptitsyn with Yuri Shatunov.

After graduating with a degree in physics from Novosibirsk State University in Russia in 1991, Ptitsyn earned his Ph.D. in physics from BINP, Novosibirsk, in 1997. He has been involved in RHIC operations since arriving at BNL on July 1, 1997 as a postdoctoral research associate and has taken part in achieving many RHIC milestones.

To join Vadim Ptitsyn for dinner after the talk at an off-site restaurant, contact Marion Heimerle, heimerle@bnl.gov, Ext. 4619. — Liz Seubert

TRAFFIC SAFETY

REGULATIONS AND ENFORCEMENT AT BNL



A message from Carol Parnell, Assistant Laboratory Director for Environment, Safety & Health

The Laboratory is implementing a new approach to enforcing traffic regulations for all who drive at BNL in an effort to improve traffic safety and help reduce the number of traffic-related accidents and injuries on site.

In 2008 and 2009, there were more than 80 traffic accidents on the Lab site, and four drivers were injured. On-site traffic-related infractions, accidents, and near-accidents are commonplace, and employees have regularly identified traffic safety as a continuing, unresolved problem. Every member of the Lab community is affected by traffic safety, and every driver's actions on the road are an indicator of his/her commitment to making the Lab a safer place.

Field observations and feedback from staff indicate that disregard for traffic regulations is commonplace, and that Lab leadership is not consistently enforcing the Lab's traffic regulations, which are the same as those mandated by New York State. While traffic regulations for the site are clear, the consequences of disobeying the regulations have not been clear. Our revised traffic safety enforcement procedure — effective March 1, 2010 — identifies clear, fair, and consistent consequences for those who disobey site traffic regulations.

Under this new program, Lab police officers will continue to monitor traffic safety and issue citations to those drivers who do not follow regulations. Managers are expected to enforce prescribed disciplinary actions in a timely manner for any of their employees, users, or guests who receive citations.

Violations have been separated into three different levels of severity, and consequences vary for Lab employees, guests, users, contractors, and vendors. Disciplinary actions range from a conference among the employee, his/her supervisor, and associate/assistant Lab director, to inclusion of a warning letter in the employee's file, to suspension without pay or temporary loss of driving privileges. A complete outline of violations and associated disciplinary actions is listed on a fact sheet found online: <http://intranet.bnl.gov/safety/docs/FS-Traffic-0210.pdf>.

See Traffic Safety on pg. 2

BNL Hosts Members of INL, ORNL, & PNNL For Integrated Facility Management Workshop

From February 3-5, members of Brookhaven Lab's Integrated Facility Management working group hosted representatives from Idaho National Laboratory (INL), Oak Ridge National Laboratory (ORNL), and Pacific Northwest National Laboratory (PNNL) for a three-day workshop.

The BNL working group is currently preparing an integrated facility management model under the Blueprint, a multi-year plan to restructure BNL's facility management processes. The new facility management model will ensure that the Lab's 350 buildings are mission-ready — more effectively managed and maintained to enable cutting-edge research while the Lab potentially grows by up to 50 percent during the next ten years.

Throughout the workshop,

the Facilities & Operations (F&O) staff from INL, ORNL, and PNNL discussed their "lessons learned" when they implemented similar models at their facilities over the past five to ten years.

"Having all these people come together and share their experiences has been invaluable while we try to figure out just what this model will look like and how it will work at Brookhaven," said Lanny Bates, BNL's Assistant Lab Director for F&O, and the Integrated Facility Management project coordinator.

Battelle manages or co-manages BNL, INL, ORNL, and PNNL for DOE. Integrated facility management is a Battelle best-practice model for sustaining facilities.

The integrated facility management model for BNL is being customized by a working group

comprised of members of BNL. It is not an effort to downsize, but it will include rethinking and enhancing the way F&O provides its services to support a wide range of researchers — from those in smaller departments, those in interdisciplinary departments, and those in the larger departments.

Members of BNL's integrated facility management working group represent the Lab's Biology, Chemistry, Collider-Accelerator, F&O, Media and Communications, and Physics departments and directorates, as well as the National Synchrotron Light Source-II project.

More information about the integrated facility management model and its developments at BNL can be found online: <http://intranet.bnl.gov/blueprint/projects/landlord.asp>.

In Memoriam: Robert McGonigle

Robert McGonigle, a computer support engineer in the Information Technology Division (ITD), died on December 13, 2009.

Frank Quarant, Enterprise Computing Services Manager in ITD, said, "I had the pleasure of having Bob as part of our team for over ten years. During that time, I was always impressed with his level-headed approach to tasks and his eagerness to get the job done quickly and efficiently. He always gave you an honest day's work and genuinely cared about his job even during his period of declining health. Our thoughts and prayers are with his family at home, and his family here at BNL will greatly miss him."

McGonigle joined BNL as a computer operator on July 10, 1967, in the Applied Mathematics Department (AMD). He was promoted to principal computer operator on October 1, 1979. In 1988, AMD divided, and McGonigle continued in the part named the Computing & Communications Division, being named a technical specialist in October 1989. A year later, he became a senior technical specialist, and then in June 1998 his title changed again to program analyst. In early 1999, the Division was renamed, becoming ITD. McGonigle continued his work in the division and rose to his final title of computer support engineer in 2001.



Said Marty Gormezano of ITD, "Bob McGonigle was a great person, good employee, team player, and a staff member every manager wishes he had. I knew Bob for the past nine years, and during that time we worked together and became good friends. Bob was an unassuming individual, calm, tolerant, and bright. He possessed a quiet sense of humor, and he loved football and Hawaii. Bob was a great individual and is sorely missed."

Another ITD colleague, Amy Quinn, said of McGonigle, "He was a great person, a great friend, and a great father figure to me. He will be terribly missed. I think of him often."

A resident of Middle Island, Robert McGonigle is survived by his wife Judy, sons Sean and Michael, daughters Kerri Starr and Amy Webb, and their families. — Liz Seubert

New Patent from pg. 1

"Because these materials selectively absorb HF gas, water vapor, oxygen, and other gases that may be present and necessary for the conversion of the precursor material to finished crystals remain in the reaction vessel, undisturbed," Solovyov said.

Solovyov and Wiesmann demonstrated the effectiveness of their approach when growing crystals of a common yttrium-barium-copper-oxide (YBCO) superconductor. In these experiments, YBCO crystals grew at a faster rate in the presence of a barium-oxide HF absorber when compared to conventional methods of crystal growth. The method also preserves the uniformity of the crystal

growth environment so that superconducting properties do not vary along the length of the film.

This specific reaction serves as only one example, and the patent applies to the many possible modifications and variations in the materials used and produced.

The new method is available for licensing and commercial development. For further information about the patent and commercial opportunities, contact Brookhaven Lab licensing specialist Kimberley Elcess, elcess@bnl.gov, 631 344-4151.

For more information, go to http://www.bnl.gov/bnlweb/pubaf/pr/PR_display.asp?prID=1041.

— Karen McNulty Walsh

Arrivals & Departures

— Arrivals —

Mark Dean CMP&MS
Vincent De Andrade NSLS II
William Fielitz NSLS II
Christopher Pontieri Physics

— Departures —

None

AdoptaPlatoon Needs Hot, Instant Cereals

This February, the Brookhaven Veterans Association's AdoptaPlatoon committee is collecting hot instant cereals. Please donate oatmeal, cream of wheat, grits, etc., by February 20, at the clinic in Bldg. 490, the Bldg. 400 lobby, the Bldg. 488 lobby, and the library in Bldg. 510.

TIAA-CREF One-on-One Retirement Counseling

A TIAA-CREF consultant will visit BNL on Thursday, March 18; Tuesday, March 30; and Wednesday, March 31 to answer employees' questions about their financial matters. For an appointment, call 1-800-732-8353 or go to <http://www.tiaa-cref.org/bnl> and select "set up a meeting."

Shiller from pg. 1

...the Arthur M. Okun Professor of Economics at the university and a fellow at the International School of Finance at Yale School of Management. He previously held faculty positions at the University of Pennsylvania's Wharton School and the University of Minnesota. A best-selling author, Shiller has written on numerous economic topics, including financial markets, behavioral economics, macroeconomics, real estate, statistical methods, and public attitudes regarding markets.

Shiller has been a research associate in the National Bureau of Economic Research since 1980. He also has been vice president of the American Economic Association in 2005 and president of the Eastern Economic Association, 2006-07. Shiller's repeat-sales home price indices, developed with Karl E. Case, are published as the Standard & Poor's/Case Shiller Home Price Indices. Currently, Shiller writes two columns: "Finance in the 21st Century," for *Project Syndicate*, which publishes around the world, and "Economic View," for *The New York Times*.

Dance With Us!

Why? Have fun, meet people, change your routine, get exercise

Do I need a partner? No!

I'm not sure...New people may try it out for two weeks for free.

Dance what? Beginner East Coast Swing, 5:15-6:15 p.m.

Intermediate Waltz 6:15-7:15 p.m.

Intermediate Merengue 7:15-8:15 p.m.

When? For six Wednesdays, starting February 17

Where? Brookhaven Center North Ballroom

How much? \$35 for the six-week series

Who? BNL employees, retirees, official visitors and their families (spouse, children). Each member may bring a partner.

For more information contact: Kathleen Tuohy, Ext. 3845; Donna Grabowski, Ext. 2720; or Mike Hanson, Ext. 2947.

TRAFFIC SAFETY REGULATIONS AND ENFORCEMENT AT BNL



Traffic Safety from pg. 1

As a reminder, when you drive on site, you need to:

- Obey speed limits — 30 mph or less
- Yield the right of way to pedestrians in crosswalks
- Wear your seat belt (drivers and front-seat passengers)
- Use hands-free cell phones only
- Stop at stop signs — no "rolling" stops
- Have a valid driver's license and car insurance

Enforcement alone is not the solution — we have also been implementing engineering solutions and are communicating our expectations. Over the past year, the Lab's Traffic Safety Committee, Facilities & Operations, and Lab Protection have rotated radar speed awareness stations around the site and installed warning signs along roads, in crosswalks, and in parking lots. Recently, the Lab also purchased a new simulator that will enable inexperienced drivers to practice in a safe environment. We will also continue to offer frequent defensive driving courses on site and online.

Please do your part to make BNL safer for drivers and pedestrians — keep focused, be aware of your surroundings and how you are driving, and encourage others to do the same.

Lunchtime Tour on Fuels, Fuel Technology, 2/19

All employees, guests, and retirees are invited to join Tom Butcher and Chris Brown as they "show and tell" about their research in alternative fuels and the fuels and technology of the future. The Employee Lunchtime Tour will visit the researchers on Friday, February 19. Meet the group at Berkner Hall upper lobby at noon, return to Berkner by 1 p.m. No reservations are needed.

Buy Daffodils To Benefit Cancer Research

BERA is again selling daffodils to benefit the American Cancer Society. Make a \$10 donation and receive a bouquet of ten fresh-cut daffodils. Proceeds will help in the fight against cancer. Prepay for your order at the BERA Store in Berkner Hall, weekdays 9 a.m.–3 p.m. The flowers will be delivered during the week of March 15.

SNOWFALL AT BNL

The weather outside was frightful enough for Brookhaven Lab to close on Wednesday, February 10, and delay its opening on Thursday, February 11. Look at the snow that fell!



Roger Stoutenburg 02/09/2010

Roger Stoutenburg 01/19/2010

R.S. 01/18/2010

Change in Federal Energy Workers Compensation Program

As part of a national program, Brookhaven Lab employees, contractors, and subcontractors who worked at the Lab 250 days or more between 1947 and 1979 are now eligible for compensation for 22 specific types of radiation-related cancers (see list below).*

Health and Human Services Secretary Kathleen Sebelius recently designated this special class of workers as part of the Energy Employees Occupational Illness Compensation Program (EEOICP). Congress enacted the program in 2000. Compensation and payment of medical expenses is available to employees of DOE contractors and subcontractors who develop a cancer due to exposure to radiation or an illness due to exposure to a toxic substance at certain DOE facilities nationwide, including BNL. A survivor's benefit is also available to certain relatives of deceased workers. EEOICP is administered by the Department of Labor (DOL). Its official web site is <http://www.dol.gov/owcp/energy>.

Brookhaven supports the program, and multiple BNL staff members have put in many extra hours from 2001 to the present to respond to DOL requests for BNL employment and exposure records. DOL uses these records to assess the work-relatedness of applicants' claims of cancer and other medical conditions.

The above-mentioned class was established for cancer victims employed at BNL before 1980 in order to make up for gaps in certain pre-1980 radiation exposure records (as determined by a recent National Institute for Occupational Safety and Health review). There were concerns that these gaps might make it difficult for a BNL worker to obtain a complete estimate of his or her pre-1980 radiation dose in support of a claim of cancer caused by radiation. The establishment of a special class at the Lab will simplify the application process for these individuals or their survivors.

A letter is being sent to each employee and retiree as part of the notification process for this change to the compensation program.

To apply for compensation, contact the program's New York resource center. See phone numbers, e-mail and mailing addresses below.** — Joe Falco, Manager, Occupational Medicine Clinic

falco@bnl.gov

* **Bone cancer; Renal cancers; Leukemia (other than chronic lymphocytic leukemia) provided the onset of the disease was at least two years after first exposure; Lung cancer (other than in-situ lung cancer that is discovered during or after a post-mortem exam). The following diseases provided onset was at least five years after first exposure: Multiple myeloma, Lymphomas (other than Hodgkin's disease). Also, primary cancer of the: Bile ducts; Brain, Breast (female), Breast (male), Colon, Esophagus, Gall bladder, Liver (except if cirrhosis or hepatitis B is indicated), Ovary, Pancreas, Pharynx, Salivary gland, Small intestine, Stomach, Thyroid, and Urinary bladder.**

** Division of Energy Employees Occupational Illness Compensation (DEEOIC), New York Resource Center, 6000 North Bailey Avenue, Suite 2A, Box #2, Amherst, New York 14226. Telephone: (716) 832-6200, Fax: (716) 832-6638, Toll Free: (800) 941-3943 Office Manager: David San Lorenzo, e-mail address: newyork.center@rroho.com

NOTE: The Department of Labor has published EEOICP Final Bulletins to address various issues related to the program. There are some bulletins that address information for some of the cancers listed above and some of the bulletins address how SEC claims are processed. See also <http://www.cdc.gov/niosh/OCAS/ocassec.html#cancers>.

BERA Updates

Interested in Running for the BERA Board?

Contact a member of the 2010 BERA Nominating Committee:

Betty Elder	belder@bnl.gov	Ext. 3562
Maureen Fazio	Fazio@bnl.gov	Ext. 5179
Toni Hoffmann	hoffman1@bnl.gov	Ext. 5257
Barbara Moebes	moebes@bnl.gov	Ext. 7159
Kim Mohanty	mohanty@bnl.gov	Ext. 4402

BERA Mini-Camp

The Quality of Life/BERA/Recreation Office will offer a BERA Mini-Camp for the five-day Spring Break period, March 29 – April 2. Attendance will be by lottery and will be limited to 50 children who are between 6 & 11 years old by January 2010. The cost for the week's mini-camp will be \$185.

Applications with complete details are available at <http://www.bnl.gov/bera/recreation/forms.asp> or at the Recreation Office in Bldg. 400 or the gym, Bldg. 461. All applications must be received by 4 p.m. Friday, March 5, to be considered for the lottery on Monday March 8. You will be notified by March 9 if chosen.

BERA Trips

Ski Day: Saturday, February 20. Sponsored by the Port Jefferson/Bridgeport Ferry. Do not contact the BERA Store for this trip. To reserve a place, call the ferry directly at 631-473-5138 and say that you are from BNL. \$95 includes ferry and bus transportation to Jiminy Peak in Massachusetts, with full-day lift ticket. Rentals are \$33 per day. You leave Port Jeff on the 6 a.m. ferry and arrive back at Port Jeff at 9:15 p.m. You will also get a voucher for a free future music cruise on the ferry during the summer.

Philadelphia Flower Show: Saturday, March 6. Theme this year: Passport to the World. Trip cost is \$35/person, includes coach bus and ticket to Flower Show. The bus departs BNL at 6 a.m., leaves the flower show at 4 p.m.

NY Knicks vs. Denver: Tuesday, March 23. Game at 7:30 p.m. Section 310 (Only 50 tickets). Coach will leave BNL at 4 p.m. and leave Madison Square Garden at the end of the game, approximately 10 p.m. Cost is \$55/person and includes coach bus and ticket.

Coaches leave BNL from the Brookhaven Center. Buy tickets at the BERA Store in Berkner Hall, weekdays, 9 a.m. – 3 p.m. No reservations can be accepted without payment, and tickets are non-refundable.



Roger Stouhenburgh 01900110

College Science & Technology Entry Program Mini-course students learn about 3-D protein imaging technology at the NSLS. They are, from left, Kimchung Pang and Kimberly Hilaire both of Long Island University Brooklyn, and Jennel Vincent of Medgar Evers College.

Mini-Course Brings Research Reality to New York Students

Brookhaven scientists captured the imagination of New York State college students with the latest research technology during the College Science & Technology Entry Program (CSTEP) Mini-course. The annual workshop, held January 11-15, is a collaborative effort with the New York State Education Department's CSTEP Program, which provides economically disadvantaged and minority undergraduates with advancement opportunities in the science, technology, engineering and math (STEM) fields.

"The Mini-course is often the first opportunity that our students have to see science research in action," said Nina Leonhardt, the associate dean for continuing education at Suffolk County Community College. "It is often the one experience that piques their interest in research and motivates them to continue in the sciences."

While learning about BNL's research, the 24 Mini-course participants also gained the hands-on experience they need to apply for summer research programs, such as DOE's Community College Institute (CCI) or the Science Undergraduate Laboratory Internship (SULI).

This year's workshop focused on structural biology, but highlighted all BNL research opportunities with lectures about physics, nanomaterials, computational sciences, plant biology and addiction. Students also toured the National Synchrotron Light Source (NSLS), the Center for Nanomaterials (CFN), New York Blue, and the Relativistic Heavy Ion Collider (RHIC).

"The students were able to make the connection between how these large facilities can play a role with small, bench-top science," said Scott Bronson of BNL's Office of Educational Programs. "And they learned how a national lab can act as a core facility for surrounding universities' research."

By using proteins as the focus for the hands-on activities, students were able to explore many levels of science — from basic bench work to advanced 3-D computer imaging technology. Topics covered included protein expression, isolation and crystallization.

BNL researchers Alex Soares, Annie Heroux, and Deborah Stoner-Ma taught students how to solve the crystal structure of isolated proteins using x-ray crystallography data at the NSLS — the same light diffraction technique used by former BNL researcher Venkatraman Ramakrishnan for his Nobel Prize-winning work with ribosomal structures — a cellular complex necessary for making proteins. The advanced 3-D imaging software that visualized and modeled the proteins captivated students.

"Our generation loves technology," said Carolyn Sealy, a junior biology major at Medgar Evers College. "The 3-D imaging was like something from a crime-solving TV show."

Perhaps students weren't solving crimes, but they did learn how to unravel the mysteries surrounding protein structure and, more importantly, discovered the real research opportunities available at BNL, should they decide to embark upon their own scientific careers.

— Tianna Hicklin

BSA Noon Recital, 2/24

Pianist Daria Rabotkina will perform works by Bach, Busoni, and Prokofiev on Wednesday, February 24, at noon in Berkner Hall. Among other honors, Rabotkina won the 2007 Concert Artists Guild International Competition, as well as the inaugural Bronder Prize for Piano from St. Vincent College in Latrobe, PA, in March 2009.

Sponsored by Brookhaven Science Associates, the company that manages the Lab, the concert is free and open to the public. Visitors to the Lab age 16 and over must bring a photo I.D.

Defensive Driving Course: Two Parts, 2/22 & 25

The next six-hour Defensive Driving (Point & Insurance Reduction) course will be held in two parts on Monday and Thursday: February 22 and 25, in the Brookhaven Center South Room, 6 p.m.–9:15 p.m. The course is open to BNL, BSA, and DOE employees, facility-users, and their families. The cost is \$38 per person. Preregistration is required. To register, call Ed Sierra, 821-1013, and leave a message. Or, take a New York DMV approved course online at <http://www.lidriveSAFE.com/>.

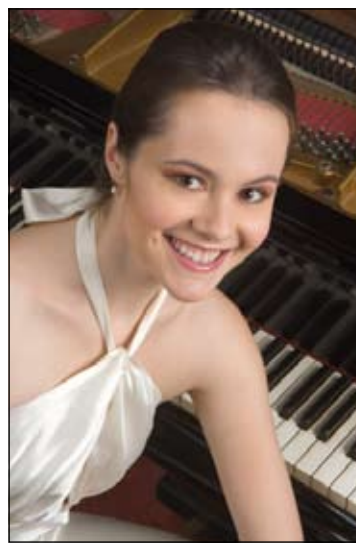


Photo: Christian Steiner

CALENDAR

— WEEK OF 2/15 —

Monday, 2/15

President's Day Holiday

BNL will be closed. No Bulletin will be issued on Friday, 2/19.

Wednesday, 2/17

*BNL Blood Drive

9:30 a.m.-3 p.m. Brookhaven Center. Today is "Random Kindness" Day — your kindness in donating blood will be much appreciated. For information on making an appointment, see pg. 4.

*455th Brookhaven Lecture

4 p.m. Berkner Hall. Vadim Ptitsyn, Collider-Accelerator Department, on "Challenges in Accelerating and Colliding Polarized Beams." Free lecture, open to the public. Visitors to the Lab of 16 and over must carry a photo ID. See pg. 1.

Friday, 2/19

*Employee Lunchtime Tour

Noon-1 p.m. Berkner Hall lobby. Meet for a visit to learn about BNL's fuel technology and alternate fuels research. See pg. 2.

— WEEK OF 2/22 —

Monday, 2/22

Talk: Hypertension & Heart Disease

Noon. Berkner Hall. Kathleen Stregiopoulos, Director of Inpatient Cardiology Consultation at SBU School of Medicine, will talk on "Hypertension & Heart Disease: Taking Charge of Your Health." To register for this free talk; contact Michael Thorn, mthorn@bnl.gov, Bldg. 490.

IBEW Meeting

6 p.m. Centereach Knights of Columbus Hall, 41 Horseblock Rd., Centereach. A meeting for shift workers will be held at 3 p.m. in the union office. The agenda includes regular business, committee reports, and the president's report.

Wednesday, 2/24

*BSA Noon Recital

Noon. Berkner Hall. Pianist Daria Rabotkina will perform, sponsored by BSA. Free event, open to the public. Visitors to the Lab of 16 and over must carry a photo ID. See left.

— WEEK OF 3/1 —

Tuesday, 3/2

*BSA Distinguished Lecture

4 p.m. Berkner Hall. Economist Robert J. Shiller, Yale University, will talk on "Animal Spirits: How Human Psychology Drives the Economy and Why It Matters for Global Capitalism." See pg. 1.

Classified Ads from pg. 4

STROLLER, CAMERA, NRDC RIDR- Jeep Wgnr Dble Strlr/\$150; Canon 35mm Cma/\$20; NR exerc machn/\$30, Ext. 3500. UGG BOOTS – 2 prs new Cardy Classics: Ladies' size 7 brown, & size 8 Dusty Rose. \$70 ea. Jessie, Ext. 6135 or jessie@bnl.gov.

Happenings

CHINESE NEW YEAR SHOW – Shen Yun Performing Arts, Radio City, Feb 13,14,20,21; BNL Discnt Code: SYBNL15, Link: <https://webticketcenter.com/ny/>. Or join trip 2/20, \$83/ea. Call George, Ext. 4033. SPECIAL EVENT AT NFCT – Take your valentine to "Love Letters" at North Fort Comm Theatre, Mattituck. 2/11-2/14. tickets \$15, 298-NFCT. Laura, Ext. 2520.

Wanted

ADOPT-A-PLATOON – \$\$\$ gratefully accepted toward mailing costs. Ext. 8481. APARTMENT/HOUSE – looking for 2 bdrm apt/house aprx \$1100/incl util, pets allowed, pref near Lab. Huston, Ext. 7415. BNL MUSIC CLUB VOLUNTEERS – for concert sound, lighting, or lending a hand in music shows at BNL. Contact us, get involved! Joe, Ext 3846. Joe, Ext. 5139. DRAFTING BOARD OR TABLE – Portable, pref, w/ parallel blade. Ext. 7108. RENT 3+ BEDRM HOUSE – Looking for 3+ bdrm house nr Lab. Must accept dogs. Prefer rural, w/larger lot, gar/shed for m'cycle. \$1800/mo max. Brent, Ext. 2455.

Real Estate for Sale

SHOREHAM – Coll, 4 BR, 2.5 bath, DR, LR, Den w/FP, granite counters, in gnd spnkrs, cul-de-sac, 8 min. to Lab. \$359,000 neg. 645-5827.

We regret that other ads are omitted — no space. See pg. 5 on the pdf at www.bnl.gov/bnlweb/pubat/bulletin/default.asp or call Ext. 2346 for a full paper version.

Give Life: BNL Blood Drive, 2/17

BNL's next blood drive will be held on Wednesday, February 17, 9:30 a.m. - 3 p.m. in the Brookhaven Center. Your gift of life to your neighbor is priceless, and very much appreciated. Donors must be 17 to 75 years of age, in good health and weighing over 110 lbs. Restrictions may apply to some from the UK and Europe. Donors should have a photo ID and know their social security number. To make an appointment, log on to the Human Resources webpage, click on "Blood Drive" and select "Schedule an Appointment." If you do not have access to a computer, call Liz Gilbert, Ext. 2315.

Classified Advertisements

To apply for a position, go to www.bnl.gov. Select "Job Opportunities," then "Search Job List."

OPEN RECRUITMENT - Opportunities for Lab employees and outside candidates.

POSTDOCTORAL RESEARCH ASSOCIATE (Magnetic / Correlated Electron Materials) - Requires a Ph.D. in experimental condensed matter physics or a related field, and preferably have research experience related to magnetic or correlated electron materials. Experience with low temperature measurement techniques are required, especially magnetization, heat capacity, and electrical transport. Experience with neutron scattering or another advanced spectroscopy is optimal, as well as expertise in bulk material synthesis. Electron microscopy and structural determination using x-ray diffraction are preferred skills. This project focuses on the synthesis of new intermetallic compounds where magnetic order can be suppressed to zero temperature at a quantum critical point. Neutron scattering and a variety of lab-based measurements will be used to study the critical phenomena associated with the quantum critical point, and especially its relationship to unconventional superconductivity. Under the direction of M. Aronson, Condensed Matter Physics & Materials Science Department. BNL policy states that Research Associate appointments may be made to those who have received their doctoral degrees within the past five years. Apply to Job ID #14972.

APPLICATIONS ENGINEER (I-6) (Web Designer/Developer) - Requires a bachelor's degree or equivalent experience, preferably in Computer Science, and 3+ years of recent experience as a web designer/developer. Ability to create cross-browser, cross-platform compatible, standards-based website designs using XHTML and CSS required. Experience with JQuery and javascript and their use in interface design; experience with web application programming, preferably using classic ASP (or ability to learn ASP based on familiarity with comparable languages such as PHP); experience with using MS SQL or equivalent databases to present dynamic online content; solid grasp of search engine optimization techniques, usability testing methods and accessibility principles required. Experience with Flash, ActionScript a plus. Will work with a small, highly motivated team. This position is responsible for the design and maintenance of a broad spectrum of websites that support Brookhaven National Laboratory's overall online communications program - from the Lab's intranet to the website for the Relativistic Heavy Ion Collider. Will be responsible for maintenance of existing websites, design and creation of new websites based on internal customer specifications, design and/or integration of dynamic page elements into websites, regular content updates using the Lab's content management system, preparing images and graphics optimized for online distribution, and providing technical support to novice web authors. Community, Education, Government & Public Affairs. Apply to Job ID #15206.

HR REPRESENTATIVE (BENEFITS, A-4) - Requires a bachelor's degree or equivalent work experience which must include experience with medical and dental insurance claims and customer relations in a benefits, insurance, or health care environment. Proficiency in Word and Excel is required (Knowledge of PeopleSoft HR and PowerPoint is a plus). Must have excellent organization, communication, and interpersonal skills, and demonstrated ability to manage multiple priorities with attention to detail in an extremely fast-paced environment, handle high call volume, and work independently is necessary, as is a high level of personal integrity to perform this position with emphasis on confidentiality and discretion. Will be expected to provide benefits information to participants, resolve complex claim issues with insurance companies, review and process invoices, assist participants with plan enrollment and changes, update PeopleSoft database for benefits as necessary, and assist with coordination of open enrollment. Also must provide administrative support to the Manager, Benefits and other members of the Benefits staff. Human Resources & Occupational Medicine Division. Apply to Job ID #15203.

ELECTRONIC TECHNICIAN (T-2) - The Technical Specialist will provide technical support to the NSLS department in the area of Electrical Support and NSLS/SDL Operations. Under general technical direction, and with considerable latitude for the exercise of initiative and judgment, the candidate will perform a wide variety of highly skilled technical assignments in support of the

engineering and technical staff, including the design, construction, installation, documentation, repair, including off-hour emergency call-in repairs, and continued maintenance of the equipment managed and operated by the Electrical Support Group. Requirements include an Associate's degree in electronics technology or equivalent, and at least four years' relevant experience; a demonstrable working knowledge of analog and digital circuitry, the ability to use various instruments such as digital multi-meters; oscilloscopes, function generators, hand tools commonly employed for terminating wires and cabling, and also tools used for the construction and maintenance of electronics chassis. The ability to understand and work from schematics, verbal instructions and written test procedures is necessary as is the capability to respond to off-hours emergencies that require a return to work. Familiarity with PLC and LabView programming is desirable. National Synchrotron Light Source. Apply to Job ID #15202.

ELECTRICAL / ELECTRONIC TECHNICAL SPECIALIST (T-2)/SR. TECHNICAL SPECIALIST (T-3) - Requires an AAS degree or equivalent training and experience in electrical/electronic technology with a minimum of four years' experience with the use of electro-mechanical equipment, system fabrication, PC board repairs, and the ability to troubleshoot electronic systems. Must have a high degree of initiative and judgment, and must be able to plan, coordinate, and perform technical work assignments. Work experience with analog/digital electronics, high voltage/high current power supplies, instrumentation, motion devices, and/or RF systems is desired as well as the ability to work from electrical schematics and use standard test and measurement equipment (function generators, oscilloscopes, multi-meters). Under general technical direction and with latitude to exercise a high degree of initiative and judgment, will assist scientists and engineers in the development, fabrication, testing, installation, and maintenance of analog/digital electrical/electronic systems that support the Relativistic Heavy Ion Collider operations and system upgrades. Instrumentation Systems Group, Collider-Accelerator Department. *ERAP Eligible: \$500. Apply to Job ID #15199.

ELECTRICAL / ELECTRONIC SR. TECHNICIAN (TW-3)/PRINCIPAL TECHNICIAN (TW-4) - Requires an AAS degree or equivalent training and experience in electrical/electronic technology with a minimum of one year's work experience with the use of electro-mechanical equipment, system fabrication, PC board repairs, and/or the ability to troubleshoot electronic systems is required. Must demonstrate the ability to follow procedures to perform technical work assignments. Work experience with vacuum systems, high voltage/high current power supplies, instrumentation, motion devices, and/or RF systems is desired. Under technical direction and/or with written procedures and guidelines, will assist scientists and engineers in the development, fabrication, testing, installation, and maintenance of electrical/electronic systems that support the Relativistic Heavy Ion Collider operations and system upgrades. This will include system troubleshooting using standard test and measurement equipment (function generators, oscilloscopes, multi-meters), system wiring and cable termination, PC board testing and repair, etc. Instrumentation Systems Group, Collider-Accelerator Department. *ERAP Eligible: \$500. Apply to Job ID #15198.

*ERAP stands for Employee Referral Award Program. When a BNL employee refers a person for ERAP eligible career opportunities and that person is hired, the employee gets a referral award, either \$500 or \$1000, as reflected in the posted job description. All opportunities are listed at <http://www.bnl.gov/hr/careers/> and employees may also log on to view all ERAP-eligible positions and sign up for automatic alerts. For more information, contact Nancy Sobrito at sobrito@bnl.gov.

Motor Vehicles

09 NISSAN ALTIMA 2.5 S - 2.5K mi. new cond, CVT trans, am/fm/cd,6spkrs, pwr dvr seat, 7yr/70M warr. \$20,500 neg. 404-7009.
05 DODGE MAGNUM RT - 69K mi. Hemi, aws,gps, dvd, dual strss exhl, all pwr, lthr, satt. excel. \$17,500 neg. 518-641-1500.
04 PONTIAC GRAND PRIX GT - 57.126K mi. White 4 dr, 3.8L V6 SEI, 6cd player. \$8,900 neg. Lank, 585-7241.
04 CHEVY SUBURBAN - 69.5K mi. 4X4, Rem stt, Pwr all., cd/satt.,c/c, new tires, lo mi., excel.cond. warr. \$18,000. 513-6067.
02 CADILLAC SLS - 60K mi. V8 N.star, AT PW PL CC,4dr, htd sts, keylss ent, new batt/fuel pmp, dir maint, gar'd. \$10,000 298-8231.
01 HONDA ACCORD EXL - 119K mi. V4, lthr, Pwr all.,cd/satt.,c/c, p/s/a/c; rem strt; new tmg belt, tires, batt; \$5,800 neg. 742-1202.

Valentine's Day Notes

KELLY, You're still the best thing that's ever happened to me. There is no doubt you're in my heart now....Love, Rick

Thanks for being you! Love you always, your man.....

Years ago I remember trying your last name to see how it sounded with my first name. It sounded great then, and it still does! Love, HSIRT

Dear NL, Over 12 years of marriage and you're still the only Valentine for me! Love BL

Hon: Remember, after a year of heavy losses, I've still got your back. luv always, w.m.

Dear Weiwei, happy our first valentine, Be happy and healthy everyday. Love you every moment. Xiaofeng Budster, I'm so lucky, lucky, lucky, lucky, lucky to have you! Thank you for loving me and being my strength.

HONEY, thank you for being such a wonderful dog/pet! I am a lucky boar! I love you!

One cat, two cats, three cats, four...We've got so many, and there's plenty more. Happy Valentine's Day from the FB's!

Violets are blue; daffodils are yellow; Valentine, when you laugh, you jiggle like Jello! Have a smoothy-wooshy, mushy-gushy day!

Dear Pook, Someday our lives will be less hectic and we'll be able to enjoy each day together! If we keep thinking it, it will come true! Love always, Pookie

Kayla & Charlie, Luv you guys! kiss kiss Happy Valentines Day! Love, Mommy

To the SLC girls, thanks for making all my dreams come true! Love you all, Pencil.

Be mine for another 19? I'll love you for many more - J.

Wishing a Happy Valentine's Day to AJ, BJ, and Belly. Peace and blessings to each of you! Love, RNR

Happy Valentine's Day Leo 21! Love, Lucy-ll

BNL = Buzz 'n Linda

Fluffy and my little man; you are the loves of my life; two terrific men that any woman would be proud to have in her life. I love you both with all my heart. Love, Trish/Mom

Happy Valentine's Day, Indrani. From your Loverboy. Crazy about protons, neutrons, electrons, and you. From: The world's VIP asylum BNL

JUN: I thank my "Lucky Stars" that I have You! Happy Valentine's Day. Love You, SHA

Dear Bernadette, The best thing about Valentine's Day is being able to share it with you now and always! I love you! Your Valentine, Jim

To: Rich. Happy 2nd Valentines Day together, I love you a lot babe, and I'm glad you're here! Love, JC

Dear You, Through all the good and bad we have survived. I love you more today than all the yesterdays. Me

It won't be long now daddy, only three months to go. You listen to mommy's tummy and see how much I grow. J.T.N. 5/1/10

I loved you then, and I love you still; I adore you now, and I always will. All my love! R.I.N.

To my darling Ron2shuz, I now know that we can weather any storm. I love you truly and forever. Your loving Bun

To my loving wife, Donna Marie. You are my BABE. Loving you all my life. Stevie

To Ward, Loving you always, thanks for being the best. Always, Barbara

Erin: Loving you has made my life sweeter than ever. Almost Happy Wedding! Love always, Joe

GWR: Roses are red, hearts are chop suey, mine beats 4000 times an hour just for you-ey!

Happy Valentine's Day to my Julia, Emily, and Andrea. You fill my life with love, happiness and lots of smiles! Love, Aunt J

For my sweetheart Ed, who will forever be in my heart. -J

Bill, 42 years and counting...let's hope for lots more. Happy V-day! Love, D.

Linda - 26 years and it just keeps getting better. Love, Me

Love Bug, We've struggled and conquered, Through tough times and fun, Who knew Cupid would be a better shot Than H1N1.

Happy Valentine's Day to our Larry and Carrie, you are our special "lovies." With all our love, Mommy and Daddy

For Dave, on our first Valentine's Day as an "old married couple," I love you. Here's to many more years of love and laughter together. Tiff

BJS - Impérissables, les neiges d'antan. L

Looking forward to another 25 Baby! You've done so much for our home, together with the kids and the wof woof, Love Snuggie

Boo-e: You still have what it takes, my heart belongs to you 4ever

Dear Tiff, What a wonderful year this has been! I married the love of my life and we bought our first house together. I'm so lucky to have you. I love you, Your googlybear.

KS: aka - snookie wookie pookie wookum snookum pies: You = pure amazing. I love you <3 your Dave LiLi, Weebol, Mama-San, and now Nana-weebol - 14 kats and one grand daughter later your still the one.

Amo', close your eyes and hold me close forever. Love You, Amo

Cyndy: To whom I shall ever love, our 38th year of happy hearts. So now you can trade me in!" Love Joe

Ciao Amo', Auguri. Buon San Valentino

Hi Susan, Thanks for your help. Happy Valentine's Day!

Romantic emotions in kettle overseas.

JAS - "Your angel smile, your gentle touch are all I'm dreaming of." Love, EAS

00 TOYOTA CELICA - 114K mi. new tires, m/roof, elect windows/locks, cd, gd cond \$4,900. (Leo). Ext. 7161 or dalesio@bnl.gov.
98 NISSAN MAXIMA - 125K mi. 5spd std. shift, p/p, p/w, new fr. tires, orig. owner. \$3,400 neg. Ext. 2080, wejappe@gmail.com.
98 SUBARU LEGACY OUTBACK - 103K mi. awd, a/t, elect wndws/lcks, CD, new tires/brakes, mech gd. \$4,900. Leo, Ext. 7161.
97 MERCURY TRACER - 127K mi. S Wgn. 4 cyl., 4 dr., a/t, P/S, P/W, am/fm, A/C. new parts, but tmg. belt fail. \$800 neg. 757-0160.
97 INFINITY I-30 - 186.2K mi. c/c, m/rf V6,lthr, new batt & belt/rotor/strtr, Bose sound, gd cond, avail 2/16. \$2,900 neg. 398-2063.
96 TOYOTA CAMRY - 140K mi. manl tranny, new tires/brkes/cltch/tmg belt, runs well, rear eng seal leaks oil. \$1,200. Ext. 7027.
92 SATURN SL2 - 180K mi. a/t, 4dr, running cond. new bat., gd tires, loaded, needs fixing or gd for parts. \$500 neg. Ext. 4333.
OIL FILTERS - new, in orig boxes, 4 fram, PH5 GM 5.7L eng, 2 Lee LF25, \$2/ea. Stephen, Ext. 4475 or plate@bnl.gov.

Furnishings & Appliances

BEDROOM SET - q/size, gd cond, incl 2/ night stands; 1 headbrd Q/K size; dresser w/mirror; mattress/box; ask/\$200. Yan, 424-3609 or yanya1120@yahoo.com.
CHINA CABINET - 2-pc, Approx 8'h x 4'w. Glass drs, bottom-drawers storage. Excel cond. Bob, Ext. 3903, 286-0037.
COUCH - w/2 recliners, multi blue/brown, gd cond, \$250; Loveseat/\$150. 205-2421.
CRADLE, CHANGING TABLE, CRIB - Baby Italia Cradle \$75/Chgg Table \$50/Crib \$100, Rachel, Ext. 3500 or irachel@bnl.gov.
DAYBEDS - 2/twin, call for pricing. Ext. 3853. Madeline, 744-8964.
DINING RM TABLE, BEDRM - Ethan Allen Trestle Tbl opens to Banquet sz; Ikea full sz bed/mattress, workstation, dresser. Anne, aschroed@bnl.gov.
DINING, LIVING ROOM FURNITURE - excel cond. Assorted shelves also available. Very reasonable prices. Anant, 744-2499.

MICROWAVE CABINET - wheeled, wood, 18"d, 52.5"h, 25"w w/towel rack, drawer, storage, photo avail, \$50/obo. 591-1183.

MOVING SALE - Couch & Loveseat Micro-fiber cream color \$450; light wood dining table w/2 leaves and 4 wickerback chrs \$300; light wood desk w/glass top/\$150; white tv stand w/shelves/\$75. Ext. 4961.

MOVING SALE - couch/\$100 u pic up, excel cond, color-buff, med beige, 89"Lx32"Hx34"W, 10 min to lab. 369-9720.

OFFICE/TASK CHAIR - qdjustable armless task chair on wheels, blue fabric/\$25. Jane, Ext. 2198, 591-1183 or lysik@bnl.gov.

SAMPSON MICROWAVE - w/spin plate, NW5490 W series, 16" dr/20" unit, v/gd cond, ask/\$25. Esther, Ext. 3260.

SOFA - black leather, \$150. Richard, Ext. 7129, 516-779-3116.

SOFA AND LOVE SEAT - love Seat 65"x36" w/2 recliners Sofa 92"x36"w, hunter green, excel cond \$350/set. Jonathan, Ext. 4921 or jfranco@bnl.gov.

SOFA BED - w/slip covers, all cushions. Opens to 4x6 feet. Gd cond. 286-0037.

TABLE CHAIRS & HUTCH UNIT - 6 chrs w/hutch, fair cond \$300, photos avail. Richard, Ext. 7129, 516-779-3116.

Audio, Video & Computers

52 - Projection Screen. On wheels in excel cond, 3 yrs. old. Too large for room. Ask. \$500/neg. Ext. 7216, 445-4027.

FAX COPY MACHINE - Sharp, like new, uxb-700 series almost never used, ask/\$20. Esther, Ext. 3260.

H&R BLOCK AT HOME DELUXE - '09 Fed Tax Return w/E-file, new/20. Ext. 3485.

SONY TAPE RECORDER - Reel to reel Sony tape recorder TC-270 and other audio components. Anant, 744-2499.

Car Pool

PLAINVIEW - estab 3-pers pool meets Plainview, wants 4th pers (Driver/Rider) BNL Hrs: 8AM-4:30PM. Ron, Ext. 6068.

Sports, Hobbies & Pets

BOWFLEX MOTIVATOR - w/lat pulldown & leg extnrs. Excel. Pics. \$450. 902-5453.
CELLO - v/gd cond, w/new hard case, \$3700/firm. Ext. 4475 or plate@bnl.gov.
RANGER TICKETS - vs. St Louis Blues, Thurs 3/18-\$115 for 2 tix. Laura, Ext. 7278 or macarthur@bnl.gov.
WEIGHT BENCH - w/leg/arm/chest, attachments, \$50. 516-779-3116.

Miscellaneous

14 KT GOLD BRACELET - new cond/orig box, photo avail, 14kt yellow gold, \$200/obo. Ext. 2198, 516-817-0999.
BOX SPRING SET - for king size mattress, clean/perfect cond, \$125. 523-7870.
DIAMOND RING - 1.29 Ct. platinum setting, round, brilliant, S12 clarity, F color grade, all certifs, apprsd \$10K; \$5K/obo. 830-3254.

DIRT BIKES,TVs - Mongoose, 2, not used, pic avail; 25" Goldstar TV, CMT-2565A/\$20; 32" Sharp, 32N-400/\$75, perf cond. Ext. 7502.

ELECTRONIC DRUM SET - Yoki DD502 digitl contrlr w/215 voices, 50 songs,20 kits, 3 toms,1 snare & kick drum w/pedal,2 cymbals,1 hi-hat w/pedal, \$299/neg. Ext. 3246.

FOOD SCALE - EatSmart Precision Pro Digital Kit Scale, White, unused in bx/\$25. Donna, Ext. 2716, 878-2425.

GUITAR STRINGS - 6 pkgs, new, 3 Fender, 3 other, \$2.50/ea/obo for whole package. Susan, 949-4046.

LEATHER COAT - ladies sz sm, black, button down, full length, worn once, pic avail, \$70. Mary, Ext. 6344, phraner@bnl.gov.

PARAFFIN SPA PLUS - by Homeedics; new orig/\$39.99; not used, in orig carton w/paraffin refill, \$25. Ext. 2198, lysik@bnl.gov.

SHED UNITS - hvy dty metal: 60hx12dx30w, 60hx19dx35w, \$25/ea; resin: 54hx39wx12d, \$20; st/less steel x6: hvy dty, \$60. 591-1183.

STROLLER W/CAR SEAT/BASE - Graco MetroLiteLX Stroller, blue/gray pattern, \$50. Ext. 4921, jfranco@bnl.gov.

See Classified Ads on pg. 3

Motor Vehicles

09 NISSAN ALTIMA 2.5 S – 2.5K mi. brand new cond, silver w/charcoal inter, CVT trans, am/fm/cd w/6 spkrs, 8 way pwr dvrs seat, 7yr/70M bumper to bumper ext warr. \$20,500 neg. 404-7009.

05 DODGE MAGNUM RT – 69K mi. Hemi, aws, gps, dvd, excl cond, new tires, dual stainless exhaust, all pwr, lthr int, satellite radio, well-maint. \$17,500 neg. AI, 518-641-1500 or queirolo@bnl.gov.

04 PONTIAC GRAND PRIX GT – 57.126K mi. White 4 dr, 3.8L V6 SEI, 6cd player. \$8,900 neg. Lank, 585-7241.

04 CHEVY SUBURBAN – 69.5K mi. 4X4, Remote start, Leather, Pwr all., cd/satt., c/c, New tires, low mi., excel. cond, Well maintained. warr. \$18,000. Len, 513-6067.

02 CADILLAC SLS – 60K mi. V8 Northstar, AT PW PL CC, 4dr, pearl white w/white lthr int, htd seats, factory Bose sound, keyless entry, new batt/fuel pump, dlr maint, gar kept. \$10,000. 298-8231.

01 HONDA ACCORD EXL – 119K mi. no accidents. V4, leather, Pwr all., cd/satt., c/c, P/S, A/C. remote start, new timing belt, new tires, new battery, great cond. \$5,800 neg. 742-1202 or cjz_chem@yahoo.com.

00 TOYOTA CELICA – 114K mi. new tires, blue, moon roof, elect windows/locks, cd player, gd cond mechanically and body. \$4,900. Bob (Leo), Ext. 7161 or dalesio@bnl.gov.

98 SUBARU LEGACY OUTBACK – 103K mi. awd, black w/tan trim, a/t, elect windows/locks, CD, new tires/brakes, body has some dings, mechanically gd cond. \$4,900. Bob (Leo), Ext. 7161 or dalesio@bnl.gov.

98 NISSAN MAXIMA – 125K mi. 5spd std. shift, black w/gray int. p/l, p/w, cloth seats, new front tires, orig. owner. \$3,400 neg. Warren, Ext. 2080 or wejappe@gmail.com.

97 MERCURY TRACER – 127K mi. Station wagon. 4 cyl., 4 dr., a/t, P/S, P/W, am/fm, A/C. Many new parts, always maintained...but... engine seized after timing belt failure. \$800 neg. Frank, 757-0160.

97 INFINITY I-30 – 186.2K mi. c/c, moon roof no accidents, white, V6, leather, new batt, new belt/rotor/starter, premium Bose sound, gd cond, avail Feb 16. \$2,900 neg. Yucel, 398-2063 or yildirim@bnl.gov.

96 TOYOTA CAMRY – 140K mi. manual tranny, new tires/brakes/clutch/ timing belt, runs well, however the rear eng seal leaks oil. \$1,200. Ioannis, Ext. 7027 or marnaris@bnl.gov.

92 SATURN SL2 – 180K mi. a/t, 4dr, in running cond. new bat., gd tires, loaded, but some features need fixing, also gd for parts. \$500 neg. Sergei, Ext. 4333 or lymar@bnl.gov.

Motor Vehicle Supplies

OIL FILTERS – new, in orig boxes, 4 fram, PH5 GM 5.7L eng, 2 Lee LF25, \$2/ea. Stephen, Ext. 4475 or plate@bnl.gov.

Furnishings & Appliances

BEDROOM SET – q/size, gd cond, incl 2/ night stands; 1 headbrd Q/K size; dresser w/mirror; mattress/box; ask/\$200. Yan, 424-3609 or yanyao1120@yahoo.com.

CHINA CABINET – Large 2-piece china cabinet Approx 8 feet high by 4 feet wide. Glass doors and bottom drawers for miscellaneous or book storage. Excellent condition. Bob, Ext. 3903, 286-0037.

COUCH – w/2 recliners, multi blue/brown, gd cond, \$250; Loveseat/\$150. Ronnie, 205-2421.

CRADLE, CHANGING TABLE & CRIB – Baby Italia Cradle \$75/Changing Table \$50/Crib \$100, pic upon request. Rachel, Ext. 3500 or irachel@bnl.gov.

DAYBEDS – 2/twin, call for pricing. Ext. 3853. Madeline, 744-8964.

DINING ROOM TABLE/BEDROOM – Ethan Allen Trestle Table opens to Banquet size; Ikea full size bed/mattress, workstation, dresser. Anne, aschroed@bnl.gov.

DINING, LIVING ROOM FURNITURE – excellent condition. Assorted shelves also available. Very reasonable prices. Anant, 744-2499.

MICROWAVE CABINET – on wheels, solid wood, 18”d, 52.5”h, 25”w w/towel rack, drawer, cabinet storage, photo avail, \$50/obo. Jane, Ext. 2198, 591-1183 or lysik@bnl.gov.

MOVING SALE – Couch & Loveseat Microfiber cream color \$450; light wood dining table w/2 leafs and 4 wickerback chairs \$300; light wood desk w/glass top/\$150; white tv stand w/shelves/\$75. Maria, Ext. 4961.

MOVING SALE – couch/\$100 u pic up, excel cond, color-buff, med beige, 89”Lx32”Hx34”W, 10 min from lab. Fred, 369-9720 or wojtuniak@bnl.gov.

OFFICE/TASK CHAIR – qdjustable armless task chair on wheels, blue fabric/\$25. Jane, Ext. 2198, 591-1183 or lysik@bnl.gov.

SAMPSON MICROWAVE – w/spin plate, NW5490 W series, 16” dr/20” unit, v/gd cond, ask/\$25. Esther, Ext. 3260.

SOFA – black leather, \$150. Richard, Ext. 7129, 516-779-3116 or rlagattolla@bnl.gov.

SOFA AND LOVE SEAT – love Seat 65”x36” w/2 recliners Sofa 92”x36”w, hunter green, excel cond \$350/set. Jonathan, Ext. 4921 or jfranco@bnl.gov.

SOFA BED – Sofa bed with slip covers and all cushions. Opens up to approx 4 by 6 feet. Good condition. Bob, 286-0037.

TABLE CHAIRS & HUTCH UNIT – 6 chairs w/hutch, fair cond \$300, photos avail. Richard, Ext. 7129, 516-779-3116 or rlagattolla@bnl.gov.

Audio, Video & Computers

52 – Projection Screen. On wheels in excellent condition, 3 yrs. old. To large for room. Ask. \$500/neg. Ext. 7216, 445-4027 or minter@bnl.gov.

FAX COPY MACHINE – Sharp, like new, uxb-700 series almost never used, ask/\$20. Esther, Ext. 3260.

H&R BLOCK AT HOME DELUXE – '09 Federal Tax Return w/E-file, new/20. Ext. 3485.

PHOTO & NEGATIVE SCANNING – www.pictureperfectscans.com scans & color corrects 35mm slides, photos, negatives & converts them to DVD. Music slide-shows avail, Port Jeff. Dianne, 928-6469.

SONY TAPE RECORDER – Reel to reel Sony tape recorder TC-270 and other audio components. Anant, 744-2499.

Sports, Hobbies & Pets

BOWFLEX MOTIVATOR – With lat pull-down & leg extension. Excellent condition. Pictures available. \$450. Dave, 902-5453.

CELLO – v/gd cond, w/new hard case, \$3700/firm. Stephen, Ext. 4475 or plate@bnl.gov.

RANGER TICKETS – against St Louis Blues, Thurs 3/18-Only \$115 for 2 tix. Contact me for seat info. Laura, Ext. 7278 or macarthur@bnl.gov.

WEIGHT BENCH – weight bench w/leg/arm/chest, attachments, \$50. Richard, Ext. 7129, 516-779-3116 or rlagattolla@bnl.gov.

Tools, House & Garden

LAWN MOWER – Murry riding mower 8hp w/bags, runs well, needs belt and pully, b/o. Richard, Ext. 7129, 516-779-3116 or rlagattolla@bnl.gov.

SHELF UNITS FOR STORAGE – hvy duty metal shelving units 60hx12dx 30w, 60hx19dx35w, \$25/ea; white resin shelving 54hx39wx12d, \$20; stainless steel x6 shelves hvy dty photo avail \$60. Jane, Ext. 2198, 591-1183 or lysik@bnl.gov.

Miscellaneous

14 KT GOLD BRACELET – in time for Valentine's Day! new cond/orig box, (hugs and kisses/xoxo)photo avail, 14kt yellow gold, \$200/obo. Ext. 2198, 516-817-0999 or lilady007@optonline.net.

BOX SPRING SET – for king size mattress, clean/perfect cond, \$125. 523-7870.

DIAMOND RING – 1.29 Ct. platinum setting, round, brilliant stone, S12 clarity, F color grade, all certifications, appraised over \$10K, asking \$5K/obo. Pam, 830-3254.

DIRT BIKES AND TV'S – Mongoose, 2 identical, never used, pic avail; 25” Goldstar TV, CMT-2565A/\$20; 32” Sharp, 32N-400/\$75, both in perfect cond. Edward, Ext. 7502.

ELECTRONIC DRUM SET – Yoki DD502 digital controller w/215 voices, 50 songs, 20 kits, 3 toms, 1 snare and kick drum w/pedal, 2 cymbals, 1 hi-hat w/pedal, \$299/neg. Ext. 3246.

FOOD SCALE – EatSmart Precision Pro Digital Kit Scale, White, never used in bx/\$25. Donna, Ext. 2716, 878-2425 or storan@bnl.gov.

GITAR STRINGS – 6 pkgs, brand new, 3 Fender, 3 other brand, \$2.50/ea/obo for whole package. Susan, 949-4046 or susiec@centermoricheslibrary.org.

LADIES LEATHER COAT – size sm, black, button down, full length, worn once, pic avail, \$70. Mary, Ext. 6344 or phraner@bnl.gov.

PARAFFIN SPA PLUS – by Homedics; new orig/\$39.99; never used, in orig carton w/paraffin refill, \$25. Jane, Ext. 2198 or lysik@bnl.gov.

STROLLER WITH CAR SEAT – Graco MetroLiteLE Stroller, blue/gray pattern incl stroller, car seat and base/\$50. Jonathan, Ext. 4921 or jfranco@bnl.gov.

STROLLER, CAMERA, NORDIC RIDER – Jeep Wagoneer Double Stroller/\$150; Canon 35mm Camera/\$20; Nordic Rider exercise machine/\$30, Women's Dallas Cowboy Jersey/\$25, e-mail for more info and pics. Rachel, Ext. 3500 or irachel@bnl.gov.

UGG BOOTS – Two pairs of brand new Cardy Classics: Ladies size 7 in brown and Ladies size 8 in Dusty Rose. \$70 each. Jessie, Ext. 6135 or jessie@bnl.gov.

Car Pool

PLAINVIEW – established 3-person car pool, meeting in Plainview, looking for 4th person (Driver/Rider) BNL Hours: 8AM-4:30PM. Ron, Ext. 6068.

Community Involvement

BNL MUSIC CLUB VOLUNTEER – Interested in concert sound, lighting, or just lending a hand? Want to participate in upcoming music shows here at BNL? Contact the BNLMC and get involved! Joe, Ext 3846. Joe, Ext. 5139.

Happenings

CHINESE NEW YEAR SHOW – SHEN YUN PERFORMING ARTS at Radio City, Feb 13,14,20,21; Over 400 shows around world, BNL Discount Code & Link: SYBNL15 <https://webticketcenter.com/ny/>. George, Ext. 4033.

RADIO CITY BUS TRIP – to see SHEN YUN Performing Arts Show, Brilliant/Inspiring and Glorious, Feb 20th @ 2pm, \$83/pp, bus leave at 10:30am, sponsored by North Shore Library. George, Ext. 4033.

SPECIAL EVENT AT NFCT – Take your valentine to “Love Letters” at North Fork Community Theatre, Mattituck. 2/11-2/14. All tickets \$15 at <http://www.nfct.com> or 298-NFCT. Laura, Ext. 2520.

Wanted

ADOPT-A-PLATOON – Monetary donations gratefully accepted towards mailing shipments to military overseas. Thank you. Joanne, Ext. 8481.

APPARTMENT /HOUSE – looking for a 2 bdrm apt/house around \$1100/incl util, pets allowed, prefer close to lab. Huston, Ext. 7415 or hfernandes@bnl.gov.

BNL FAMILY MEMBERS IN MILITARY – If you have a family member that has been deployed overseas, please contact Adopt-a-Platoon. Joanne, Ext. 8481.

DRAFTING BOARD OR TABLE – Portable drafting board, pref, wi, parallel blade. Michael, Ext. 7108.

RENT: 3+ BEDROOM HOUSE – Looking for 3+bdrm house near the lab. Must accept dogs. Prefer more rural setting with larger lot. Would like a garage or shed to store motorcycle. \$1800/mo or less. Brent, Ext. 2455 or bbuetow@bnl.gov.

Lost & Found

WEDDING RING – found Berkner Hall, call to identify. Catherine, Ext. 3054.

For Rent

MELBOUNRE BEACH, FL – 3/2 Ranch, unfurn w/appli, great rm, screen porch, 2 car gar, cac, priv ocean beach access, borders State preserve, 1 yr lease preferred, photos avail, nice beach community. \$1,100/mo. 774-3115.

BELLPORT VILLAGE, NY – 1 bdrm upstairs apt, l/r kit combo, full bath, fully carpeted, priv ent/drway, excel cond, enjoy ll village amenities, incl utils. \$1,125/mo. Jim, 275-0745.

FARMINGVILLE, NY – furn bdrm in lg house, full kit, l/r, d/r, share bath, incl cable, wifi, phone. \$450/mo. Benji, 513-8275 or benonium@gmail.com.

MASTIC, NY – 1 bdrm, eik, full bath, den, own ent/drway, 10 min to lab, 1 mo sec, no smkg/pets. \$850/mo. Giuseppe, Ext. 3499, 219-7241.

PATCHOGUE, NY – 1 bdrm (loft style) 1 bth apt, perfect for one, priv yd/patio/drway, l/r, kit, w/d and util incl, 1/2 mo sec. \$900/mo. Beth, Ext. 2852, 758-0830 or cheryllc@bnl.gov.

PORT JEFFERSON STATION, NY – Colonial, 3bdrm, 1.5 bath, fin bsmt w/possible 4th bdrm, l/r,d/r,eik, gas heat, fen yd, no smkg, young families on block, Comsewogue SD, sec deposit req. \$1,800/mo. 413-5012 or gtarlady1@aol.com.

ROCKY POINT, NY – 1 bdrm apt, w/d, eik, l/r, 3 closets, off st prkg, pvt ent, so smkg, incl heat, elect, avail early March. \$975/mo. 849-4708.

ROCKY POINT, NY – 1 bdrm, 2nd flr, priv drwy, incl some util, no smkg/pets, cac, incl gas/water. \$795/mo. 821-3287.

ROCKY POINT, NY – 1 bdrm upper unit, kit, bath, l/r, balcy, quiet co-op comm, nr stores, Indry rm on prem, prkg, no smkg/pets, cac, incl gas/water. \$1,150/mo. 806-5965.

SHOREHAM, NY – 1 bdrm, brand new, garden apt, grd flr, indep, ent/drwy, full bath, kit, l/r, cac, no smkg/pets, few mi to BNL, 1 mo sec, all util incl. \$1,100/mo. 566-8261.

WADING RIVER, NY – 1 bdrm. apt., eik., lg. l/r, full bath, pri. ent.10 min. BNL, utils. incl. single non smoker only, no pets 1/ mo/sec. \$900/mo. 929-3419.

HAWLEY, PA – Woodlock Pines Resort Lakehouse: Time segment 2/21- 2/28. 12 person max. capacity. <http://www.woodloch.com/home/> . \$1,500/wk neg. Ext. 2788.

N. MYRTLE BEACH, SC – 2 bdrm, 4 beds, 2.5 Bath, Townhouse on golf course w/ comm pool, daily, wkly/mo rates avail. \$590/wk. Chris, 516-660-0290.

For Sale

BACA RATON, FL – 2 bdrm condo, 2 bath, near shopping, Mizener Park, beach estate, maintenance/\$322/mo. \$89,000. Rosalie, 917-877-3310.

ADIRONDACKS, NY – Brant Lake, unobstructed waterviews, 3 story chalet, 4-5 bdrm, 2 baths, great rm, 2-car atch gar, possible rental apt, 500’ of shared waterfront dock/swim/float. \$425,000. 786-3446 or mtlakeaway09@yahoo.com.

BLUE POINT, NY – Colonial, 4 bdrm. or potential Mother/Daughter, 2 bath, l/r, d/r, den, kit, bsmt/crawl space, porch, 1.5 car gar, fen yd, low taxes. \$325,900 neg. Gerlaise, 472-6284.

RIDGE, NY – 1 mi from BNL, Ranch 7rm, 3brm 2 full bth, full bsmt, 3 skylights, 5 cathedral ceil, bright/spacious on .71 acre, price just reduced. \$335,000. 917-294-6629.

SHOREHAM, NY – 4 bdrm., 2.5 bath Col., frml l/r and d/r, den w/tp, fin. bsmt, 12 x 20 deck, igs, new granite counters and stainless appli, SWRSD, much more, 7 mi to lab. \$479,000 neg. Don, 821-3320.

SHOREHAM, NY – Colonial, BNL, 2.5 bath, DR, LR, Den with FP, granite counters, in ground sprinklers, cul-de-sac, 8 min. from Lab. \$359,000 neg. 645-5827.

SHOREHAM - studio apartment - 8 miles from Lab - furnished or unfurnished, clean and newly painted, full eat-in kitchen, walk-in closet, new bathroom; all utilities/cable included; no smoking - \$875 month plus security. 631-849-2593