

## BNL and Lab Scientist Gene-Jack Wang To Be Honored at Asian Pacific American Heritage Celebration, Wang Center, 5/14

Two BNL honorees — BNL itself and Gene-Jack Wang, Chair of BNL's Medical Department — will be recognized at the annual Asian Pacific American Heritage Month Celebration on Saturday, May 14. Along with three other honorees, Lab Director Sam Aronson and Wang will each receive a proclamation from Suffolk County Executive Steve Levy at 4:30 p.m. at Stony Brook University's (SBU) Wang Center.

BNL will be cited for "outstanding contributions to the Asian American community," and Wang will be honored as a "distinguished Asian American professional."

The Asian American Advisory Board of the Suffolk County Office of Minority Affairs and the Charles B. Wang Center organized the Asian Pacific American Heritage Month Celebration, in cooperation with BNL's Asian Pacific American Association (APAA), the Taiwanese American Association on Long Island, and the Filipino American Community Organizations of Long Island. All are welcome at the noon-to-6 p.m. event. For more information, see [http://www.scaaab.org/2011\\_apahm\\_press\\_release](http://www.scaaab.org/2011_apahm_press_release).

BNL has approximately 3,000 employees and hosts about 4,000 visiting researchers each year. Home to seven Nobel Prizes, the Lab conducts research in physical, biomedical, and environmental sciences, as well as in energy technologies and national security.

BNL prizes diversity and



supports the annual Asian Pacific American Heritage Month celebration. Recently, through the efforts of the Asian Pacific American Association, the Lab donated over \$80,000 to the Japan Earthquake Relief Fund, including \$40,000 from individual contributions from employees, \$25,000 in matching funds from BSA, and \$15,400 from SBU, the largest user of BNL's facilities.

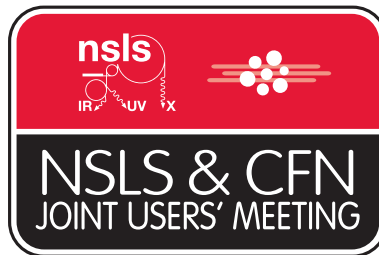
As the Chair of BNL's Medical Department, Gene-Jack Wang oversees approximately 70 employees. His research, and that of his colleagues in the department, focuses on the study of various brain disorders. Wang uses imaging technologies, such as positron emission tomography (PET) and magnetic resonance imaging (MRI), to track and understand the brain mechanisms associated with addiction, alcoholism, obesity, and eating disorders.

Using PET, he recently determined that there is a similarity in brain circuits' disruption in drug addiction and obesity.

"I am honored to receive this recognition from the Asian American community," Wang said. "Also, I am glad to have the opportunity to pursue research in the field of brain disorders, which are so prevalent. We still have much to learn about how to control harmful health problems such as addiction and obesity."

Wang received an M.D. from Kaohsiung Medical University in Taiwan in 1980, and a master's degree in radiation health sciences from The Johns Hopkins University in 1984. He was a nuclear medicine resident at the University of Missouri from 1984 to 1986; a hematology fellow at Albany Medical College, 1986 to 1988;...

See APAA Awards on p. 2



### Annual Joint NSLS/CFN Users' Meeting, 5/23-25

This event for scientists who use the NSLS and CFN facilities to share their work and discuss future directions for their research will be held at BNL, May 23-25. Learn more: [www.nsls.bnl.gov/users/meeting/page.aspx?id=home](http://www.nsls.bnl.gov/users/meeting/page.aspx?id=home)

## BNL's Gerald Stokes Appointed To NYISO Consumer Advisory Council With a goal of recommending best service for NY electricity consumers

Gerald Stokes, BNL's Associate Director for Global & Regional Solutions, has been appointed to the Consumer Advisory Council of the New York Independent System Operator (NYISO) by its board of directors. Established earlier this year, the council will provide a forum for the exchange of information between the NYISO and electricity consumers, with a focus on information sharing, outreach, and education.

"We are delighted that Gerry has been asked to participate on the NYISO Advisory Council," said BNL's Deputy Director for Science & Technology Doon Gibbs. "This group will have a significant impact on both the independent system operators and on New York State as both seek to shape the electric grid of the future. It is another example of the way in which BNL has been playing an important role on the deployment side of state and national energy solutions."

As explained in a NYISO news release on the new Consumer Advisory Council, its creation is another step in the NYISO's



ongoing efforts to develop and implement a comprehensive, proactive consumer program. The council's primary focus will be to study the current activities being undertaken by the NYISO, become familiar with the NYISO's five-year strategic plan, learn about anticipated developments in the electric industry, and provide the NYISO with its vision and recommendations as to how the NYISO can best serve New York's electricity consumers. In addition, the NYISO's president and CEO also may ask the council to provide input on specific initiatives and developments.

— Kay Cordtz

## Palounek to Talk on Lise Meitner, Discovery of Nuclear Fission, 5/19

Andrea Palounek, a physicist at Los Alamos National Laboratory, will give a talk titled, "Lise Meitner and the Discovery of Nuclear Fission" on Thursday, May 19, at 4 p.m. in Berkner Hall. Sponsored by Brookhaven Women in Science, the talk is free and no registration is required. All visitors to the Lab 16 and older must bring a photo ID.

Born in Austria in 1878, Lise Meitner could have been called "the mother of nuclear fission," since she was a member of the team that discovered it. While her colleague Otto Hahn was awarded the 1945 Nobel Prize in Chemistry for that discovery, she was not given that honor, even though she gave the first theoretical explanation of the fission process. Her exclusion is often cited as the Nobel committee's most egregious omission.

Meitner earned a Ph.D. in physics from the University of Vienna at a time when women were not welcome in higher institutions of learning. She also maintained a successful scientific career in Germany and later in Sweden, where she was forced to emigrate. Later in her life, Meitner was finally



recognized for her scientific contributions. In 1966, two years before her death, Meitner and her colleagues Hahn and Fritz Strassmann received the Enrico Fermi Award "for their independent and collaborative contributions" to the discovery of fission.

In her talk, Palounek will give an introduction to Lise Meitner's life and discuss her contributions to physics and society, as well as explain how her work is being rediscovered.

After earning an A.B. in chemistry and physics from Harvard University in 1978, and a Ph.D. in physics from Duke University in 1984, Palounek worked in high-energy physics experiments at the Massachusetts Institute of Technology, and two DOE laboratories — SLAC National Accelerator Laboratory and Lawrence Berkeley National Laboratory — before joining Los Alamos in 1991, where she continued her physics research and held several consecutive management positions. She has recently returned to research, leading work in muon active interrogation, a method to detect certain kinds of nuclear materials.

— Diane Greenberg

## 469th Brookhaven Lecture, 5/18 The Skinny on Thin Clouds

Forget about whether you prefer the Mets or the Yankees: If you wanted to make an educated guess about who will win when the two teams play next week, you would need to see some data, right? You'd at least want pitchers' earned run averages and batters' batting averages.

Just as you would need data to hypothesize which baseball team is more likely to win, climate scientists need lots of data — including how much of the sun's energy is blocked or captured by clouds in the atmosphere — to assess how things like carbon emissions may affect the earth's climate. Scientists are constantly collecting new data to construct and improve complex climate models to make projections of what the earth's climate will be like in the future. And that's not a bet to get wrong.

On Wednesday, May 18, join Andy Vogelmann of BNL's Environmental Sciences Department for the 469th Brookhaven Lecture, titled "The Skinny on Thin Clouds." All are invited to attend this free talk, which is open to the public and will be held in Berkner Hall at 4 p.m. Refreshments will be offered before and after the lecture. Visitors to the Lab ages 16 and



older must carry a photo ID while on site.

To join Vogelmann for dinner at an off-site restaurant following the talk, contact Adrienne Jerry, Ext. 7525, [ajerry@bnl.gov](mailto:ajerry@bnl.gov).

Vogelmann will begin his talk by discussing the role that clouds — thin clouds, in particular — play in the earth's energy budget as the sun's rays enter and exit the atmosphere. He will then explain how scientists are working from both the ground and the air to understand better how clouds affect the earth's climate, and why that understanding is necessary to develop more accurate climate models.

Vogelmann earned a Ph.D. in meteorology from Pennsylvania State University in 1994 and worked on climate observations and modeling as a postdoc at the University of Arizona from 1994 until 1995. In 1995, he went to Scripps Institution of Oceanography, where he continued his research first at the Center for Clouds, Chemistry and Climate, and later at the Center for Atmospheric Sciences. He arrived at BNL's Atmospheric Science Division as a scientist in 2003 and continues to do research on climate and the Earth's energy balance.

— Joe Gettler



## CALENDAR

### OF LABORATORY EVENTS

The BERA Store in Berkner Hall is open weekdays from 9 a.m. to 3 p.m. For more information on BERA events, contact Andrea Dehler, Ext. 3347, or Christine Carter, Ext. 2873.

### — REGULARLY —

#### Weekdays: Free English for Speakers Of Other Languages Classes

Beginner, Intermed., Adv. classes, various times. All welcome. Learn English, make friends. See <http://www.bnl.gov/esol/schedule.asp> for schedule. Jen Lynch, Ext. 4894.

#### Mondays & Thursdays: Kickboxing

\$5 per class. 12:15–1:15 p.m. in the gym (Bldg. 461). \$5 per class. Ext. 2873.

#### Mon., Tues., Thurs., & Fri.: Tai Chi

Noon–1 p.m., B'haven Cntr (Bldg. 30), N. Rm. Adam Rusek, Ext. 5830, [rusek@bnl.gov](mailto:rusek@bnl.gov).

#### Tues.: Hospitality Welcome Coffee

10:30 a.m.–noon. Rec Hall (Bldg. 317). Meet over coffee. Children welcome. Ext. 2873.

#### Tuesdays: Zumba

Noon–1 p.m., in the gym (Bldg. 461). Registration required, Ext. 2873.

#### Tuesdays: Knitting Class

2–4 p.m. Rec Hall (Bldg. 317). Learn to knit/crochet — all skill levels. Free. Ext. 2873.

#### Tuesdays: Toastmasters

Two monthly meetings: 1st & 3rd Tuesdays, 5:30 p.m., Bldg. 463, Room 160. Guests and visitors welcome. <http://www.bnl.gov/bera/activities/toastmasters/>.

#### Tuesdays & Thursdays: Aerobic Fitness

5:15–6:30 p.m. in the Rec. Hall (Bldg. 317). \$5 per class, or 10 classes for \$40. Pat Flood, Ext. 7886 or [flood@bnl.gov](mailto:flood@bnl.gov).

#### Tues., Wed., & Thurs.: Rec Hall Activities

5:30–9:30 p.m. in Bldg. 317. General activities, TV, ping pong, chess, games, socializing. Christine Carter, Ext. 5090.

#### Tuesday & Thursday: Aqua Aerobics

5:30–6:30 p.m., Pool (Bldg. 478). Registration required, Ext. 2873.

#### Wednesdays: Ballroom Dance

5:15 p.m., 6:15 p.m., and 7:15 p.m. N. Ballroom, Brookhaven Center (Bldg. 30). <http://www.bnl.gov/bera/activities/dance/default.asp>.

#### Wednesdays: Pilates

5:30–6:30 p.m. at the Rec Hall (Bldg. 317). Registration required, Ext. 2873.

#### Wednesdays: Play Group

10 a.m.–noon. Meet at Rec Hall (Bldg. 317). Parents meet while infants/toddlers play. For events, see <http://www.meetup.com/BNL-Playgroup/>, or call Ext. 2873.

#### Wednesdays: Yoga

Noon–1 p.m., B'haven Center (Bldg. 30). Free. Ila Campbell, Ext. 2206, [ilac@bnl.gov](mailto:ilac@bnl.gov).

#### 1st Wednesday of month: LabVIEW

1:30–3 p.m., Bldg. 515, 2nd fl. Seminar Rm. Free technical assistance from LabVIEW consultants. Ext. 5304, or Terry Stratoudakis, (347) 228-7379.

#### Thursdays: BNL Cycletrons Club

5 p.m., Brookhaven Center. First Thurs. of month. Andy Mingino, Ext. 5786.

#### Thursdays: Reiki Healing Class

Noon–1 p.m., Call for location. Nicole Bernholz, Ext. 2027.

#### Thursdays: Postdoc Social Night

6:30 p.m. ASAP Lounge (Bldg. 462). [www.bnl.gov/asap](http://www.bnl.gov/asap).

#### Thursday: Judo Class

7:30 p.m. Gym (Bldg. 461). Free. Tom Baldwin, Ext. 4556.

#### Fridays: Family Swim Night

5–8 p.m. Pool (Bldg. 478). \$5/family. Ext. 2873.

#### APAA Awards on p. 2

...and a nuclear radiology fellow at SBU from 1988–1990. Wang joined BNL's Medical Department in 1990 as an assistant scientist, became a senior medical scientist in 2005 and department chair in 2006. He is also professor of psychiatry in the Mount Sinai School of Medicine and research professor of psychiatry and radiology, SBU.

— Diane Greenberg

#### LIANS Dinner Meeting, 5/18

At the next dinner meeting of the Long Island Chapter of the American Nuclear Society (LI-ANS), on Wednesday, May 18, Robert Bari of BNL's Nuclear Science & Technology Department will talk on "Small Modular Reactors." Bari is an elected Fellow of the ANS and won the ANS "Tommy" Thompson Award in 2003. The meeting will be held at the Brickhouse Brewery & Restaurant, 67 W. Main St., Patchogue, (631) 447-2337. Complimentary appetizers/cash bar start at 6 p.m., and Bari's talk at 8 p.m. The cost is \$25/person. Reserve with Arnie Aronson, Ext. 2606, by Monday, May 16.

# CONGRATULATIONS, 2011 BSA SCHOLARS

Brookhaven Science Associates (BSA), a company formed by a partnership between Battelle and Stony Brook University (SBU) to manage BNL, has announced the 15 winners of the annual BSA Directors' Scholarships, which go to children of BNL employees in continuation of a tradition instituted at BNL in 1965. Each BSA scholar is a high-school senior who will receive \$2,500 per year for up to four years of study at the college or university of his or her choice. As an additional benefit, SBU, which is committed to bringing the SBU and BNL communities closer together, has offered a matching scholarship to BSA scholarship students who are admitted and enrolled as full-time students at SBU in the fall of 2011. The 15 2011 BSA scholars are listed below.

**1. Davida Marysa Bynum**, daughter of Patrice Greenwood of the NSLS-II Project, lives in Middle Island and will graduate from Longwood High School. She also works part time in BNL's Office of Technology Commercialization and Partnerships. Bynum will attend Howard University to study international business administration and Spanish for a career in law and politics.

**2. Greg Danseglio**, the son of Dennis Danseglio of the Modernization Project Office, lives in Islip Terrace and attends St. Anthony's High School, Huntington. He will attend the University of Virginia to study business and finance.

**3. Victoria Folz** lives in West Islip, is a senior at St. John the Baptist Diocesan High School, and is the daughter of Charles Folz of the Collider-Accelerator Department. She will attend the United States Merchant Marine Academy.

**4. Frank Hackenburg** of Mastic is the son of Donna Chiosone of the Budget Office and Robert Hackenburg of the Physics Department. He attends William Floyd High School and will study at the University of Maryland, with plans for a career in aerospace engineering.

**5. Tayla Laster**, the daughter of Mildred Wiener and Jonathan Laster, both of the Collider-Accelerator Department, is a senior at Plainview-Old Bethpage John F. Kennedy High School and lives in Old Bethpage. She will study art education at the University of Maryland for a career in art education or art therapy.

**6. Max Ma**, a resident of Port Jefferson Station where he is a senior at Comsewogue High School, is the son of Hong Ma of the Physics Department. He will study mathematics at Boston College.

**7. Logan Murphy**, son of Linda Bowerman of the Global & Regional Solutions Directorate and Biays Bowerman of the Nonproliferation & National Security Department, attends William Floyd High School and lives in Mastic Beach. He will major in biology at Stony Brook University and is considering a career in law or medicine.

**8. Stephanie Ann Piacentino**, who is the daughter of Joseph Piacentino, Jr., of the Collider-Accelerator Department, lives in Kings Park where she attends Kings Park High School. She will study chemistry and Italian at Gettysburg College for a career in scientific research.

**9. Jonathan Quarant**, son of Frank Quarant of the Information Technology Division, lives in North Babylon and attends North Babylon High School. Aiming toward a career in the medical field, he will complete coursework in biology and the pre-medicine track at Pennsylvania State University.

**10. Jenny Kate Schlager**, who lives in Setauket and is a senior at Ward Melville High School, is the daughter of Thomas Schlager of the Information Technology Division. She will attend The George Washington University to major in international affairs.

**11. Michael Skinner**, a senior at Riverhead High School who lives in Wading River, is the son of John Skinner of the Biology Department. He will study computer science at Marist College for a career in computer programming.

**12. Laurie Vetter**, daughter of Kurt Vetter of the Photon Sciences Directorate, lives in East Quogue and attends Westhampton Beach High School. She will study nursing at Harding University.

**13. Ryan Wong**, who lives in Lake Grove and is a senior at Centereach High School, is the son of Susan Eng Wong,



1.



2.



3.



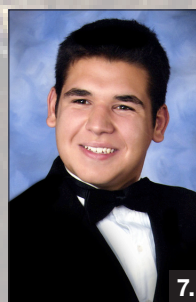
4.



5.



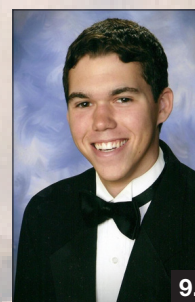
6.



7.



8.



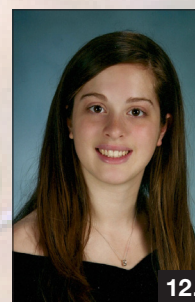
9.



10.



11.



12.



13.



14.



15.

Information Technology Division, and Vincent Wong, who worked at the Alternating Gradient Synchrotron. He will study chemical engineering at Northeastern University or Carnegie Mellon University for a career in biotechnology.

**14. Joy Zhong**, daughter of Zhong Zhong of the Photon Sciences Directorate, lives in Stony Brook and is a senior at Ward Melville High School. With an interest in public policy, she will attend at Dartmouth College.

**15. AnnMarie Zigrosser**, the daughter of Doug Zigrosser of the NSLS-II Project, is a senior at St. John the Baptist High School, Patchogue, and lives in Bayport. She will major in business at St. Joseph's College.



# BNL’s Japan Earthquake Relief Fund Reaches \$80,000

The results of BNL’s Japan Earthquake Relief Fund effort are in, and the total collected was just over \$80,400. This includes about \$40,000 from the Lab community, \$15,400 from Stony Brook University (SBU), and \$25,000 in matching funds from Brookhaven Science Associates (BSA). The relief fund was initiated by the BNL Asian Pacific American Association (APAA), with special support from Satoshi Ozaki and many others, including the Community Relations Office. The Japan Society will receive \$79,900, the rest having been directed to other relief funds. The Society will deliver 100 percent of the contributions to organizations involved with immediate relief as well as long-term recovery.

A broadcast message from Lab Director Sam Aronson on April 23 expressed heartfelt sympathy for the tragic events following the earthquake and tsunami in Japan and kicked off the fundraising effort, announcing the matching BSA funding, a benefit event organized by the APAA, and a table staffed by volunteers in Berkner Hall lobby to collect donations. The very successful benefit event on April 30 featured presentations by BNL Nuclear Science & Technology Chair Bill Horak on containment and release management strategies for reactors, SBU’s Geosciences Professor Teng-fong Wong on earthquakes and tsunamis, and a dramatic drum performance by SBU’s “Taiko Tides.”

Said Susan Wong of the APAA,

“There were so many generous contributors. The APAA may have initiated the effort, but other independent fundraising activities emerged. Groups across the Lab who worked hard to fundraise included last year’s United Way captains, Roy Lebel and Joyce Fortunato, and their contacts, as well as the Collider-Accelerator and other departments. Donations even came in from some staff of local restaurants frequented by BNLers. I am sure I speak for all the volunteers in this group effort in thanking the generous contributors who made our efforts not only easy, but tremendously worthwhile.”

In addition, as the many BNLers who contributed at the daily table in Berkner will recall, each donor there received an origami paper crane. The cranes were made originally by members of BNL’s English For Speakers of Other Languages program, and added to by the volunteers staffing the Berkner table. After the fundraiser, the APAA sent 250 “extras” to the Cranes for Kids program in which OshKosh B’Gosh sends an article of clothing to the children of Japan for each crane received.

As Director Aronson concluded, “I am grateful for the generosity of employees at BNL and SBU, as well as from BSA, which reflects in a practical way the close ties between the Lab and many colleagues and scientific institutions in Japan, and our sympathy for our friends and colleagues impacted by this tragedy.” — Liz Seubert

## Dr. Mow Shiah Lin Scholarship

Applications are now being accepted for the seventh Dr. Mow Shiah Lin Scholarship sponsored by the Asian Pacific American Association (APAA) at BNL. The annual \$1,000 scholarship was initiated to honor the late BNL scientist for whom it is named.

In memory of Lin’s distinguished research, achievements, and inventions, the scholarship is granted each year to an Asian immigrant with a student visa who is matriculating toward a doctorate in environmental & energy technology, biology, or chemistry at an accredited institution of higher education on Long Island, including Brooklyn and Queens. Such is how Lin began his career.

BNL scientists and members of APAA choose the winner. The selection criteria include academic records, references, career goals, and other factors deemed appropriate by the selection committee. The scholarship is granted independent of financial need.

Applications and more information can be obtained by calling the Diversity Office, Ext. 6253, or by sending an e-mail to sge@bnl.gov, or by visiting the APAA website, [www.bnl.gov/bera/activities/apaa/](http://www.bnl.gov/bera/activities/apaa/). The application deadline is May 31.

## BERA APAA Shows Films, 5/17, 24

On Tuesday, May 17, at 5 p.m. in Berkner Hall, the BERA Asian Pacific American Association will sponsor a free showing of the film *Please Vote for Me* (China, 2007, 58 minutes). What happens when people who have never lived in a democracy suddenly have the right to vote and, better yet, run for office? The story chronicles the first open elections for school monitor in a third-grade class in central China.

On Tuesday, May 24, at 5 p.m. in Berkner Hall, the film to be shown will be *Departures* (Japan, 2008, 131 minutes). Freshly unemployed, young cellist Daigo (Masahiro Motoki) has an epiphany in which he realizes he’s been heading down the wrong career path. Retreating to his hometown, he trains for a new professional role as a nakanshi, or one who prepares the dead for burial. This film won the 2009 Academy Award for Best Foreign Language Film of the Year. The Lab community is cordially invited to both films.

## BERA Trips

Purchase tickets at the BERA Store in Berkner, weekdays, 9 a.m.-3 p.m.

**NHRA at Raceway Park:** Sat., 6/4. National Hot Rod Association (NHRA) drag racing at Englishtown, NJ. Dep. BNL 7 a.m. \$65.

**NY City Bus Trip:** Sat., 6/4. Do-As-You-Please trip to Bryant Park area of NYC. Dep. BNL 10 a.m., dep NYC 6 p.m. \$20/person, ages four to 12/\$5; ages three and under/free, if they sit on your lap.

**Atlantic City Showboat Casino:** Sat., 6/11. Dep. BNL 8:45 a.m., dep. casino 8 p.m. \$30/each includes transportation and \$30 for slots. Ages 21 and over only.

Want to join in the social scene at BNL with people interested in sports, discussion, travel, camping, and much more? See [www.bnl.gov/bera/recreation/clubs.asp](http://www.bnl.gov/bera/recreation/clubs.asp).



Roger Shoulenburgh 07460411

Planning the June 15 Get-Together Luncheon are the BREA Lunch Committee members: (front, from left) Ronnie Evans, Martine O’Connor, and Louise Hanson; (back from left) Dave Cox, Eena-Mai Franz, and Myron Strongin. Not present: Carol Kramer and Joyce Tichler.

## BREA Luncheon Get Together Draws Near, 6/15

All BREA members are cordially invited to join in the Brookhaven Retired Employees Association (BREA) annual get-together luncheon at the Bellport Country Club on Wednesday, June 15.

While renewing old friendships, enjoy appetizers followed by a four-course meal with starter, salad, choice of entrées, dessert, coffee or tea, and unlimited wine, beer or soda — all for only \$37. Non-members will be able to join at the door for the membership fee of \$10. Be sure to reserve a place as soon as possible by sending a note to: BREA, BNL, Bldg 421, Upton, NY 11973-5000, together with a check for \$37 per person (made out to BREA). Include your name (and spouse/guest name), address and phone no. For more information, call Martine O’Connor at 631-286-9725.

## BREA Tours BNL Facilities, 5/18

On Wednesday, May 18, the Brookhaven Retired Employees Association (BREA) will sponsor a morning tour of the Research Support Building, the Center for Functional Nanomaterials (CFN), and the National Synchrotron Light Source II, now partially complete. The program includes a luncheon (\$8). Retirees and their guests can reserve with Ken Mohring, [kenwadingriver@gmail.com](mailto:kenwadingriver@gmail.com), or Eena-Mai Franz, [SROOSILD@aol.com](mailto:SROOSILD@aol.com). Or, send a note to BREA at Bldg. 421. For more on the agenda, see [www.bnl.gov/bera/activities/brea/default.asp](http://www.bnl.gov/bera/activities/brea/default.asp).

## Defensive Driving in Two Parts, 5/16, 23

The next six-hour Defensive Driving (Point & Insurance Reduction) course will be held in from 6 to 9:15 p.m. in two parts, on two Mondays: 5/16 in the Brookhaven Center South Room, and 5/23 in the Medical Bldg. 490 Large Conference Room. The course is open to the Lab community and the cost is \$33 per person. Preregistration is required. To register, call Ed Sierra, 821-1013. Or take a New York DMV approved course (Use code: “SAVE10” for \$10 discount) online: [www.lidrivesafe.com/](http://www.lidrivesafe.com/).

## Arrivals & Departures

— Arrivals —

Patricia Bonadonna..... S&H  
Mirian Garcia-Fernandez...CMPMS

— Departures —

Gail Donoghue..... CEGPA  
Barry Lafler .....Chemistry

## ‘You Talk’ Tuesdays Workshop for non-native speakers of English to practice giving talks or presentations

The English for Speakers of Other Languages (ESOL) Program invites non-native English speakers to “You Talk” Tuesdays, a workshop in which you can come and practice your upcoming talk or presentation. Peers will give advice and the BNL ESOL program coordinator will provide feedback on pronunciation, grammar, and presentation style. This is an informal workshop to practice public speaking in a friendly and supportive environment. Topics include using gestures and eye contact, and knowing your audience.

The schedule for “You Talk” Tuesdays is May 17, 24, and 31. The group will meet in Bldg. 400 conference room 2 on May 17 and 31, and in conference room 1 on May 24, from noon to 1:15 p.m. Feel free to bring your lunch. You can come to one or more sessions. Please do not come later than 12:15 p.m.

Please contact ESOL Coordinator Jennifer Pieniazek, Ext. 4894 or [jpieniazek@bnl.gov](mailto:jpieniazek@bnl.gov) to register or for more information.

## Talk: Workplace Bullying

On Wednesday, May 18, Nancy Losinno, Employee Assistance Program Manager, will talk on “Dealing With Workplace Bullying,” in Berkner Hall, Room B. See the flyer sent to each employee. All are welcome, but, as seating is limited, please register at [nlosinno@bnl.gov](mailto:nlosinno@bnl.gov).

## Water Mains to Be Flushed

To improve the quality of BNL water delivered to the consumer’s tap by eliminating “rusty” water, the engineers of the Lab’s Water Treatment Facility will be flushing the Lab’s water mains via the fire hydrants from Monday, May 16, through Friday, May 20.

The schedule for the water-main flush is as follows:

- Monday, May 16: Rutherford and Lawrence Drives, and south of Bldg. 490
- Tuesday, May 17: Upton Road and the apartment area
- Wednesday, May 18: Cornell Avenue and its cross streets
- Thursday, May 19: Brookhaven Avenue
- Friday, May 20: Bell Avenue

Before drinking or using water during and after the water-main flushing, run the water in your sink, fountain or shower. In some places, you may have to run your tap for five to 10 minutes until the water runs clear. If a “rusty” water problem persists beyond hydrant-flushing schedule, please call the Facilities Operations Center, Ext. 2468.

To make sure that discolored water is not used for washing clothes, the on-site laundries will close at 8 a.m. on Tuesday, May 17, and reopen on Wednesday, May 18, at 10 a.m. At that time, the washing machines will be ready for use with clean water.

Nowadays, iron is deposited in BNL’s water-distribution system by the oxidation of the cast-iron and ductile-iron piping making up the mains. Over the last several years, the Energy & Utilities Division has been systematically addressing the issue by flushing the mains over a week each spring, summer, and fall. For more information, go to <http://www.bnl.gov/bnlweb/pubaf/water/flushing.htm>.

Those traveling through areas where the mains are being flushed are requested to exercise caution, as there may be copious amounts of water on the walkways and roadways. Please drive slowly and carefully to ensure the safety of the workers who are doing the flushing, as well as your own. To ensure the condition of your car, do not drive through water gushing out of the mains, as the water pressure and velocity may damage your vehicle.

## CALENDAR

— WEEK OF 5/16 —

### Monday, 5/16

**\*Defensive Driving, Part I**  
6-9:15 p.m. Brookhaven Center South Room. Part II on 5/23 is in Bldg. 490. See notice below.

### Tuesday, 5/17

**\*APAA Shows Free Film From China**  
5 p.m. Berkner Hall. “Don’t Vote for Me.” See notice, left.

### Wednesday, 5/18

**\*BREA Tour, Lunch for Retirees**  
9:15 a.m. Research Support Bldg. 400 Conf. Room. See left.

**Talk on Workplace Bullying**  
Noon. Berkner Hall, Room B. “Dealing With Workplace Bullying.” See notice below, left.

**\*469th Brookhaven Lecture**  
4 p.m. Berkner Hall. Andrew Vogelmann, Environmental Sciences, on “The Skinny on Thin Clouds.” All welcome. See p.1.\*\*

### Thursday, 5/19

**\*Talk: Lise Meitner, Nuclear Fission**  
4 p.m. Berkner Hall. Physicist Andrea Palounek, LANL, will discuss “Lise Meitner and the Discovery of Nuclear Fission.” All are welcome. See p.1.\*\*

— WEEK OF 5/23 —

### Monday, 5/23

**\*NSLS/CFN Users’ Meeting Starts**  
From 7 a.m. Berkner Hall. Poster and Vendor set up. 8 a.m. Workshops around site. [www.nsls.bnl.gov/users/meeting/agenda.aspx?year=2011](http://www.nsls.bnl.gov/users/meeting/agenda.aspx?year=2011).

**BSA Distinguished Lecture**  
4 p.m. Berkner Hall. 2009 Nobel Prize winner in Chemistry Thomas A. Steitz, Yale University, talks on “From the Structure and Function of the Ribosome to New Antibiotics.” All are welcome. See Bulletin of 5/13/11.\*\*

**IBEW Meeting**  
6 p.m. Centereach Knights of Columbus Hall, 41 Horseblock Rd., Centereach. A meeting for shift workers will be held at 3 p.m. in the union office. The agenda includes regular business, committee reports, and the president’s report.

### Tuesday, 5/24

**NSLS/CFN Users’ Plenary Session**  
8:30 a.m. Berkner Hall. Scientific talks, updates from DOE, BNL, Key Note Speaker Thomas Steitz (see BSA Lecture above) 9:35-10:10 a.m. Lab community welcome. See link above.

\*\*Free and open to the public. Visitors to the Lab of 16 and over must carry a photo ID.



## Classified Advertisements

### Placement Notices

The Lab's placement policy is to select the best-qualified candidate for an available position. Candidates are considered in the following order: (1) present benefits-eligible employees within the department/division and/or appropriate bargaining unit, with preference for those within the immediate work group; (2) present benefits-eligible employees within the Laboratory; and (3) outside applicants. In keeping with the Affirmative Action Plan, selections are made without regard to age, race, color, religion, national origin, sex, disability or veteran status. Each week, the Human Resources Division lists new placement notices, first, so employees may request consideration for themselves, and, second, for open recruitment. Because of the priority policy stated above, each listing does not necessarily represent an opportunity for all people. Except when operational needs require otherwise, positions will be open for one week after publication. For more information, contact the Employment Manager, Ext. 2882. Access current job openings on the World Wide Web at [www.bnl.gov/HR/jobs/](http://www.bnl.gov/HR/jobs/).

To apply for a position, go to [www.bnl.gov](http://www.bnl.gov). Select "Job Opportunities," then "Search Job List."

**LABORATORY RECRUITMENT** - Opportunities for Laboratory employees only.

**PROPERTY SPECIALIST (LG-7)** - Under general supervision, is responsible for providing support to the Property Management Section of the Procurement & Property Management Division. Carries out the established policies for the identification, tagging and control of the Laboratory's accountable assets. Assists Department/Division personnel in problem resolution and guidance in property matters. Conducts the biennial physical inventory of the controlled property. Assists the Property Manager in conducting walkthrough inspections as well as problem resolution. Responsible for receipt and classification of excess/surplus property generated by Laboratory organizations. Assists in the control of scrap disposals, sales and donation of property. Procurement & Property Management Please submit Transfer Request form to Diana Hubert, Human Resources & Occupational Medicine Clinic, Bldg. 400B Job # 15748.

**LABORER (LG-3)** (One Regular/One Temporary) - Performs wide variety of manual labor tasks on roads, grounds or building maintenance. May perform unskilled tasks assisting mechanics. Operates such equipment as power lawn mowers and pneumatic tools. Site Resources Division Please submit Transfer Request form to Diana Hubert, Human Resources & Occupational Medicine Clinic, Bldg. 400B. Job ID #15755.

**OPEN RECRUITMENT** - Opportunities for Lab employees and outside candidates.

**ELECTRICIAN POSITIONS (LG- 10)** - (Temporary) Under minimum supervision lays out, constructs, installs, maintains, repairs and operates (in accordance with the national electrical codes, or as otherwise directed) electrical systems, equipment, controls and related devices. May be required to perform similar duties on other than Maintenance Division equipment and facilities. Seven years total experience composed of 5 years apprenticeship, and 2 years experience; or 7-9 years total experience composed of formal trade school plus minimum 2-years experience or 9 years experience preferred. Site Resources Division. Please apply to Job ID # 15757.

### Motor Vehicles & Supplies

11 BUICK CENTURY - 129K mi. Ltd, leather, p/s, p/w, rem key, a/t lights, newly inspected, pics. \$3,200 neg. Ext. 4431.  
07 HONDA ACCORD - 17K mi. 4-dr Sdn, 4 cyl, 2.4 L, a/t, p/w, CD, 35 mpg, orig owner, \$12,800. Ext. 3005, rbuono@bnl.gov.  
01 CHEVY TAHOE - 132K mi. 5.3 V8, 4wd, recently tuned-up, new tires, runs well, w/ clean. \$7,400. 516-924-0610.  
00 ACURA INTEGRA - 152.5K mi. runs well, no accidents, a/c, moonroof, cd player, b/o or. \$3,899. 630-640-9663.  
99 DODGE GRAND CARAVAN - 125K mi. SE V6, 3.3L, a/t fwd, fr & rr a/c, video sys, r/rack, c/c, 4 bckt seats, \$5,000 neg. 909-1498.  
99 CHEVY MALIBU - 102K mi. silver, orig owner, maint records avail, v/gd cond. \$3,000. 678-3299 or dgordon@bnl.gov.  
83 HONDA SILVERWING INTERSTATE - 50K mi. new tires, batt, rebuilt fr. forks & brkes, 2 sets seats \$1,000 neg. 335-7173.  
HARD TOP - for a '95 jeep wrangler, \$400. Bobbi, Ext. 2332, bmicari@bnl.gov.  
RIMS WITH TIRES - 4' 18" RT6 Enkei 360, perf rims; 6 Lug, excel, less than 1/yr old, ask/\$700; pd/\$1,800, pics. 813-6583.  
TIRE - Michelin ATX P235-65/R17, all terrain, only used 5K mi., \$50. Karl, Ext. 3116.  
TRI-FOLD TONNEAU COVER - brand new, black, for GMC/Chevy's w/5.8' bed, ask/\$475. Steve, 813-6583.

### Boats

25' TANZER SAILBOAT - Shoal draft 2'11", aft cabin, enc. head, roller furling, 4 winches, outbrd, GPS, more. \$5,500 neg. 909-1801.  
12' N/A N/A - fiberglass flat bottom row boat w/15 hp oil inj outboard, Trailer+ extras, \$750 neg. 878-1178, murdock@bnl.gov.

### Furnishings & Appliances

DINING TABLE, CHAIRS - solid white wash wood table w/leaf ext, 5.5'x3.5' w/6

## Lab Daughters and Sons Introduced to BNL's Science, Operations



Roger Stoutenburgh D650401



Roger Stoutenburgh D7190411



Roger Stoutenburgh D7240411

Many young visitors came to BNL for "Take Our Daughters and Sons to Work Day" on April 28. During the morning, children visited their parents' workplaces, which, at the National Synchrotron Light Source, included joining in experiments such as examining the chemical reactions of glow sticks to hot or cold water, and demonstrating how ultraviolet-light-absorbing beads in a Ziploc bag can be protected from sunlight by covering them in sun block. After lunch, Ken White of the Office of Educational Programs talked to the children about the excitement of science at the Lab, and Nancy Losinno of the Employee Assistance Program gave an interactive presentation on stress in children's lives. Then came the tours: 80 children divided into groups to visit the firehouse, the gym for a Zumba workout, and the Science Learning Center to try out, among other things, a model Maglev train. Giveaways included T-shirts, stress balls, apples, and bicycle safety information. A good time was had by all.

## BNL Summer Science Camp

BNL employees are invited to register their children for the 2011 Summer Science Explorations Program, a free offering from the Science Learning Center (SLC). The three-day camp will be held on Tuesday through Thursday, from 8:30 to 11:30 a.m., for students entering 4th to 6th grades. During the first two days, students will investigate energy transfer through hands-on activities. On the third day, camp culminates at Weaver Pond for a morning of environmental exploration.

This educational program centers on research conducted at the Lab. In addition to SLC science educators, the children are mentored by pre-service teacher interns. The weeks of July 12-14 and August 16-18 have been reserved for the children of the BNL community. Space is limited, so register your child or grandchild early by contacting the SLC Office, Bldg. 400, Ext. 4495. Students must attend all three days and the parents of participating children are welcome to attend.

### Join the Veggie Club!

Join the Community Supported Agriculture (CSA) group to get fresh produce from an organic farm in Water Mill, where the Halsey family grows 350 varieties of fruits and vegetables. If you join, for 26 weeks, June 2 to November 22, freshly picked seasonal produce will be delivered to BNL for you to pick up. The fee is \$420. Pay immediately or in two installments of \$285 on sign-up, by May 20, with one post-dated check for \$135, post-dated for July 13, 2011. For more information, brochures are in the BERA Store in Berkner Hall, or contact Ruth Comas, [comas@bnl.gov](mailto:comas@bnl.gov) or Ext. 3545.

### Donations for AdoptaPlatoon

The AdoptaPlatoon team in the Brookhaven Veterans Association is collecting sunblock, baby wipes, and instant drink mix in individual stick packages for the Lab's adopted platoon. Drop gifts in boxes located at Bldg. 490, clinic; Bldg. 400, lobby; Bldg. 488, lobby; and Bldg. 510, library.

chairs, \$350/neg. Ext. 4080, 821-1013.  
DOUBLE BED - bed frame, box spring & mattress, like new, pet/smoke free home, \$50. brookhaven@optonline.net.  
E BAUER MUSICAL BASSINET - gently used, tan fabric, wd frme, boy/girl, rock or lock in place, 5 lullabies, \$30. Ext. 3252.  
MOVING SALE - oak TV stand, wden rocker, love seat, d/r walnut server, \$25/ea, must sell this wk. brookhaven@optonline.net.  
OAK ENTERTAINMENT UNIT - up to 36" TV, w/CD store rack; glass display case w/light; more, pics, ask/\$175. zendzian@bnl.gov.  
WATER COOLER - stainless steel w/hot water dispenser, \$50. Wendy, Ext. 3924 or wwilliams@bnl.gov.

### Audio, Video & Computers

CAMERA-135 MM - Olympus Stylus Zoom 140 135 mm film; hardly used, w/case/manual/batt, \$50. Ext. 5080, 766-7701.  
IPHONE 3G - 8G mint, unlocked, running iOS 4.2.1, car chrg, USB charge cable, scr prot, fctry reset, \$200. nnambiar@bnl.gov.  
LCD MONITOR - Acer G185HAb 18.5" widescrn TFT active mtrx LCD displ, 1366 x 768 res, \$95. Ext. 7570 or hulbert@bnl.gov.  
MEMORY MODULE - 2GB DDR3-1066 from MacBookPro & iMac, 4 modules, \$15/ea. Achim, Ext. 4750 or afranz@bnl.gov.  
PLAYSTATION2 - incls 10 games, all the cables, 2/ controllers, Dvd playable and int, ask/\$150, thanks. Shayn, 887-9027.  
XBOX W/GAMES - incl every NES, SNES & Genesis games on playable disk, \$300. Jesse, Ext. 2122 or jmontalto@bnl.gov.  
XBOX360 ELITE - incls 11 games, orig cases, 2/controllers/120gb HD/hdset, also Kinect w/all cables, ask/\$300, 887-9027.

### Community Involvement

MUSICIANS WANTED - The N. Shore Symphony Orchestra needs you, fellow musicians: trumpets, tromb, perc, violins, celi... Next prog: ROSSINI & CHOPIN. Come, enjoy the music. Guy, Ext. 2485, gdubuis@bnl.gov.

### Sports, Hobbies & Pets

2003 YAMAHA ROADSTAR 1600 - wind-shield, running lights, Vance & Hines headers, lther bags, 5900 mi ask/7000. 872-5074.  
HALEX ELECTRONIC DARTBOARD - LCD scoring, not used, still in box/20. Ext. 2716, 878-2425 or storan@bnl.gov.  
HOT TUB SPA - ~6'X~7' has cover, is on trailer will deliver 15-20 mi fr BNL & place in your backrd, runs well, \$350. 516-924-4299.  
MALTICHU PUPPIES - 4 male puppies, 8 wks old, tiny, adorable! Parents on premises, ask/\$500. 516-658-0471.  
TREAD MILL - Nordic Track Power, Model PT60, rarely used, grt cond, pd/\$1300, now/\$500, have photos. 516-477-9119.  
WETSUIT - Youth sz 12, excl cond, Pd/\$110, ask/\$55. Lynda, Ext. 7235, fitz@bnl.gov.

### Free

19 INCH COLOR TV - Hitachi, Model CT19471 lks good, gd working cond, no remote. brookhaven@optonline.net.  
SPORT - 2 bowling balls; roller skate size 10; roof racks for ski; fishing pole; 8-speed blender; basketball net. Ext. 7505.

### Miscellaneous

3 YORKIE PUPPIES - Pure Breed, only 2 wks old, ready to pick up in 6 wks, call for price. Ext. 4495 or mjones@bnl.gov.  
BABY'S ITEM - Safety 1st Rocking Jitter Buggy, \$10, pic upon request. Rachel, Ext. 3500 or irachel@bnl.gov.  
BOUNCE & SPIN ZEBRA TOY - Fisher-Price, great for toddlers, \$67 on Amazon, used but clean, \$20/obo. Ext. 3621.  
EXERSAUCE - car, vibrates and makes sounds/\$20; girls bike, gd cond/\$20. 878-2425 or storan@bnl.gov.

FISHER PRICE PWR WHEELS HARLEY - Harley D Mtrcycle modl, ride on top, excel, batt chrg, 2 spds, pics, \$50. sbronson@bnl.gov.  
KITCHEN ART - coffee theme: sm framed pics, metal wall clock, and metal coffe wall decor \$50/all, pics avail. Ext. 3924.  
OUTDOOR PLAYHOUSE - Little Tikes, excel cond, ask/\$75. wwilliams@bnl.gov.

### Tools, House & Garden

FOUNTAIN - 2-tier river rock outdr fountain w/light fr Lowe's, 30"h, 36"w, used 1 season, orig/\$218, ask/\$75. 871-0561.  
POOL EQUIPMT - 20'x40' solar cvr & reel, 1.5 hp Chllngr pump/motr, Chlor. feedr, DE filter; all ~3 yrs old, b/o for ea sep. 831-5498.  
SLIDING PATIO DOOR - 6'w x 6.5h, wood int, needs work, \$50/obo. Karl, Ext. 3116.  
STEP 2 RUBBERMAID GARDEN CART - \$50. Donna, 878-2425 or storan@bnl.gov.

### Happenings

BNL SPRING FLING AFTER WORK PARTY - join us, May 20, The Flaming Hearth, 756 Horseblck Rd, Farmingville, 6 p.m. until ?? Advance tickets \$10. Appetizers, cash bar. Charles Gardner, 219-2884; Kevin Hester, 796-9168.  
CAR SHOW - & Hangout May 20 7 pm Temple Baptist Church, 70 Smith St, Ridge, NY Admssn Free! Free BBQ if you bring a car to show (show cars must arrive by 6). Fred, Ext. 2323.  
CRUISE - 7 Day Caribb. Carnival Cruise, Apr 15, 2012, to St Thomas, Barbados, St Lucia, St Kitts, St Maarten w/1-fun day at sea. \$876.72 dbl occup balc. Kim, Ext. 2896, 399-3098 or khayes@bnl.gov.  
STRAWBERRY FESTIVAL/YARD SALE - St. Thomas of Canterbury, Brooksite Dr. & Edgewater Av, Smithtown, S. of Jericho Tpk, Sat, 6/11, 9a-4p, space for rent. 265-4520.

### Lost & Found

IPOD SHUFFLE - lost iPod Shuffle, green in/nr bldg. 1005S. Ext. 3766, pgo@bnl.gov.  
KEYS - Lost Key ring w/super market tags and Hyundai key. Ext. 2689, 516-315-2984.

### Wanted

AUTO REPAIR TOOLS - Want to replace brake pads myself, need tools, like jacket, wrenches,rent or buy. Chuyu, Ext. 4431.  
CAR - I am new in BNL (535B Bldg), need car, \$1500-\$3500, not over 100k, if poss., 2000 or newer. Miguel, mruizoses@gmail.com.  
CEMENT MIXER - used, thanks in advance. Charles, Ext. 5722 or chetzel@bnl.gov.  
CLEANING LADY - fluent in English, reasonable, refs, own transp, for bi monthly cleaning Condo in Blue Point. Janet, Ext. 4147.  
DOG/CAT FOOD - For pets of struggling families/elderly. Collection bins: Bldgs 134, 400, 510 (x5864), 725, 901, 902. Ext. 3161.  
FIREARMS - I want to buy your old/new, fair \$\$ pd. Joe, Ext. 3783, 487-1479.  
OLD COMIC BOOKS - from 40's to 80's, cash pd. Jesse, Ext. 2122.  
MID-CONTROLS - for a '88 883 Sportster. Patty, 926-8125.  
RIDE ON MOWER - mulching pref. Henry, hhocker@bnl.gov.  
TENOR SAXOPHONE - wanted in gd cond; intermediate level or better, cfolz@bnl.gov. Charles, Ext. 7035.

### For Rent

CENTER MORICHES - waterview 1/bdrm apt, sing. occup, new carpeting, kit appli & bath, util incl, can be furnd, no smkg/pets, avail immed. \$1,100/mo. 834-0047.  
MEDFORD - 1 bdrm, full kitch/bath, l/r, sep ent, parking, no smkg/pets, 10 min to Lab, util/cable incl, 1 mo sec, avail June 1. \$1,050/mo. Peter, 924-7304.  
MIDDLE ISLAND - lg 1 bdrm bsmt apt, pvt ent, phone/cable/int, strictly no smkg/pet,

all incl, nr Lab, BNL empl. only, 1 mo sec. \$800/mo. Istvan, Ext. 7020, 672-2451.  
MIDDLE ISLAND - North of Middle Country Rd, priv ent, 600 sq ft, newly renov, lg kit, lg bdrm/walk-in closet, pantry, incl all. \$950/mo. Jerry, 394-7661.  
RIDGE - Spacious 1bdrm open from June 1st, 5-min to BNL, walk to McDs, 7-11, Post Office, disc. price for BNL employees. \$595/mo. Mim, 917-721-2277.  
S. SETAUKET PARK - 2 bdrm apt sep ent, full kit/bath, cac, high spd int, w/d, priv prkg, 3Vill. Sch., pics: <http://tinyurl.com/6nndns>. \$1,100/mo. Lin, Ext. 4508, 482-4648.  
SHIRLEY - main flr, 1 bdrm apt, pvt ent, lr/kit combo, granite, new appli, full ba, hrwd flrs, off st prkg, no smkg/pets, single pers, crdit chk, 1st & last sec, \$1,000/mo/all. 848-6353.  
SHIRLEY - lg 1 bdrm bsmt apt, single pers, nr beaches/parks/freeways/lirr/lab, all incl, 1 mo + 2 mo sec. \$750/mo. Ext. 3846.  
SHOREHAM - share hse w/professional, a lg/furn bdrm, cable TV, intnet, no smkg/pets, 8 mi to BNL, avail now. \$675/mo. 578-0108 or gg19582003@gmail.com.  
SPEONK - immac 3bdrm, 1 ba ranch, part fin bsmt, w/d, cac, deck, lg fen bkyrd, cul de sac, 15 min to Lab, 10 min to beach. \$1,900/mo. Lauren, Ext. 2289.  
WARREN, VT - Condo at Sugarbush Resort, slps 4, tennis, 18 hole R.Trent Jones golf, price/neg dep upon dates, [www.sugarbush.com](http://www.sugarbush.com). Ext. 4919, cmichael@bnl.gov.

### For Rent or Sale

WEEKI WACHEE SPRINGS, FL - priv Gulf Coast Bath, 70m Orlando, 45m Tampa, nr beach, tennis, park, screen/igp, lanai, citrus trees, SW architecture, 3bdrm, 2bath, lg dr, f/p, 2x gar, shed, see photos. \$950/mo neg. \$129,900 neg. 344-5537.

### For Sale

BAYPORT - Grt. S. Bay area, 2,300 sq.ft ranch, nr.1 acre, wooded, priv., 3 bdrm, 2+half ba, den, lr/dr, kit, util rm, scrmd porch, carport. \$2,300/mo. or \$585,000. 617-332-6264.  
LAUREL - 3 bdrm, 2 ba, 2500sq ft ranch, 3 gas f/p, Mattituck SD, c/a, new gas heat sys, 3 car det gar w/legal 1 bd rm apt above, walk to deeded bay rt of way, pics. \$459,000 neg. 335-7173, andydw@bnl.gov.  
MIDDLE ISLAND - 4bdrm, 2.5 ba Victorian built in '03, hardwd flr, custom paint, well maintnd, European tile in bathrooms, cherry cabinets, stainless steel appl, CAC, gar, finish rm in bsmt. \$329,000. Ext. 3621.  
Yard & Garage Sales  
EAST MORICHES - Yard Sale, Fri., May 13 & Sat, May 14, 8am-2pm, 5 Woodbine Lane, lots of good stuff! Claudia, Ext. 3467.  
MILLER PLACE - Community Yd Sale Sat 5/14, Sun 5/15, 9am-4pm, Grandview, Central, Fairview & Seaciff Aves by the pond. Ext. 5090.  
MT. SINAI - Temple Beth Emeth Yd Sale. 52 Mt Sinai Av, Sun. 5/15, 10-3p. Toys, games, house, clothes, applis, more. 744-8632.

### In Appreciation

To our extended BNL family (GARS, ELS, ESH, QMO, etc), thank you so much for all of your support after our son's accident. We were overwhelmed by your generosity and it has helped more than you will ever know. Logan is home.

### On-Site Service Station

We sell gas, change oil and batteries, and do checkups, vehicle maintenance and repairs, and NYS inspections. Ext. 4034.